

Block-A-  
Roof floor

Rev.	Date	Description	Checked	Approved

THIS DRAWING IS A COPYRIGHT DO NOT SCALE FROM THE DRAWING.  
THE CONTRACTOR AND HIS SUB-CONTRACTORS ARE TO VERIFY ALL  
DIMENSIONS ON SITE BEFORE MAKING SHOP DRAWINGS OR  
COMMENCING MANUFACTURE.

United Nations Development Programme  
UNDP Lebanon  
Social and Local Development Programme  
10, Souk El-Nasr El-Beyk, Lebanon (P.O. Box 115620)

Lebanese Host Communities  
Support Programme

CONSULTANT:

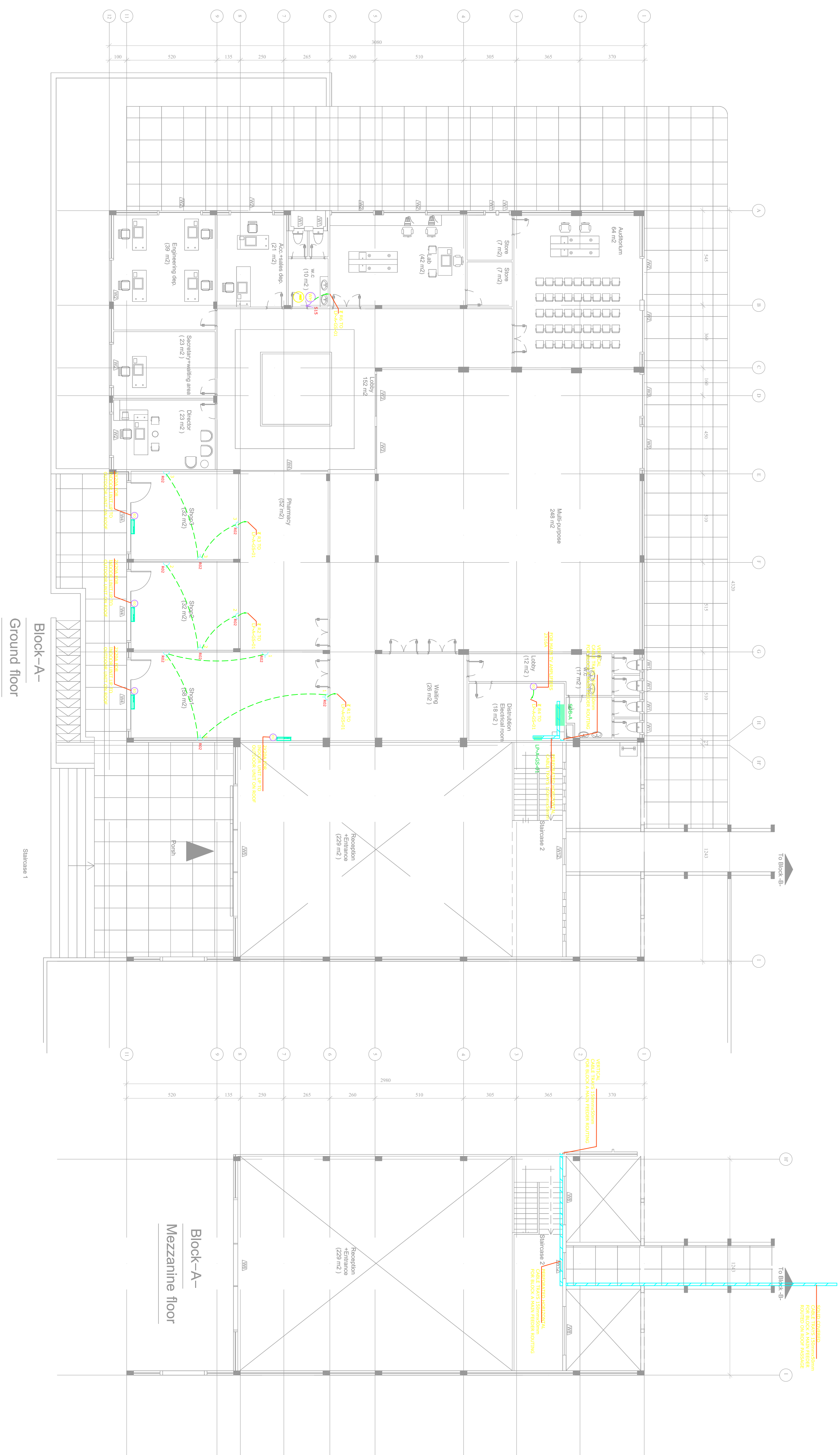
Project  
WEST BEKAA - AGRICULTURE DEVELOPMENT CENTER  
PLOT # 442

Drawing Title  
ELECTRICAL

POWER LAYOUT BLOCK-A-

Scale:	1/150	Sheet Size:	A1	
Approved By:	V.B	Date:	July-2016	
Checked By:	V.B	Date:	July-2016	
Drawn By:	H.R	Date:	July-2016	
Client Code:				
Drawing No.	L1003D-EA-102	Rev.	1	
Approvals				







Rev.	Date	Description	Checked	Approved

THIS DRAWING IS A COPYRIGHT. DO NOT SCALE FROM THE DRAWING.  
THE CONTRACTOR AND HIS SUB-CONTRACTORS ARE TO VERIFY ALL  
DIMENSIONS ON SITE BEFORE MAKING SHOP DRAWINGS OR  
COMMENCING MANUFACTURE.

**OSRAME:**

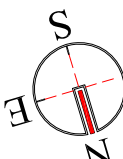
 United Nations Development Programme  
UNDP Lebanon  
Social and Local Development Programme  
P.O.Box 11542 St. George, Lebanon Tel. 961 1 6624517

 Lebanese Host Communities  
Support Programme

**Lebanese Host Communities  
Support Programme**

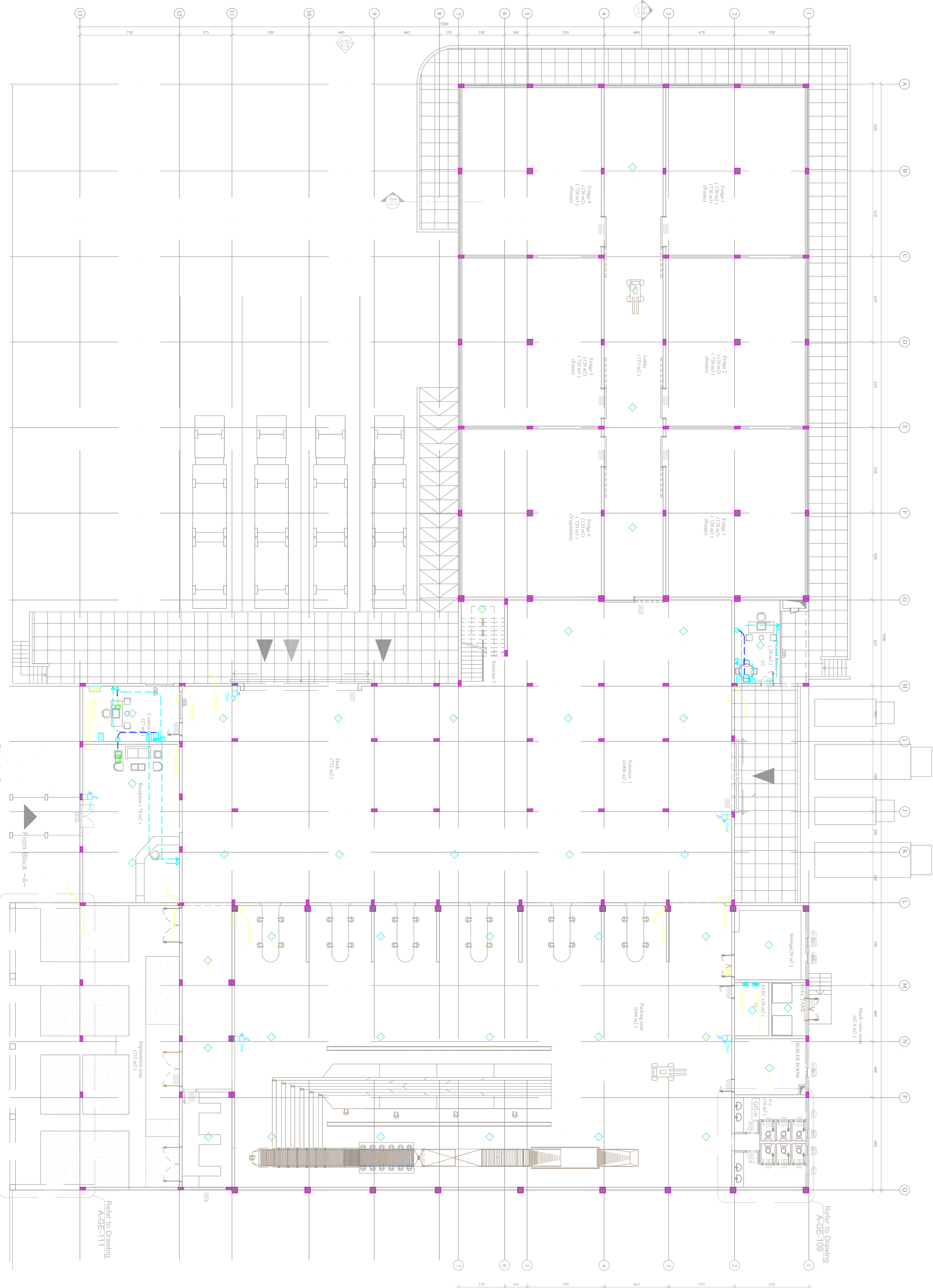
CONSULTANT:

Project		WEST BEKA - AGRICULTURE DEVELOPMENT CENTER	
Drawing Title		PLOT # 442	
ELECTRICAL			
POWER LAYOUT BLOCK-A-			
Scale: 1/150	Sheet Size: A1		
Approved By:	V/B	Date:	July-2016
Checked By:	V/B	Date:	July-2016
Drawn By:	H/R	Date:	July-2016
Client Code:			
Drawing No.	L10030-E-A-101	Rev.	1
Approvals			✓

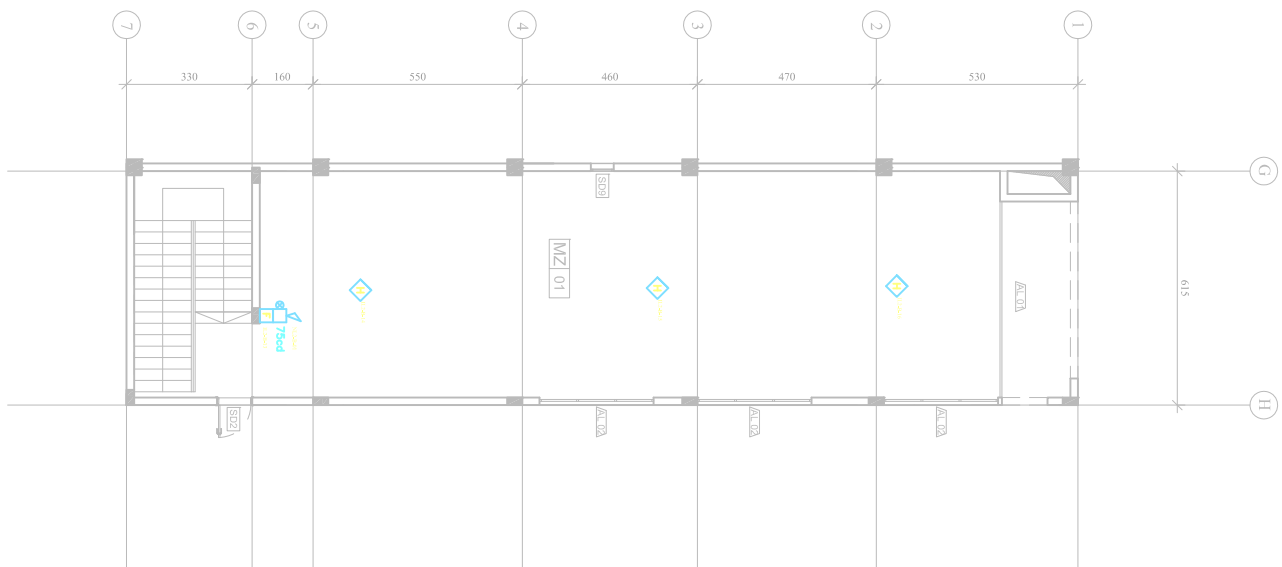








Block-B-  
Ground floor



MEZZANINE FLOOR PLAN

Rev.	Date	Description	Checked	Approved

THIS DRAWING IS A COPYRIGHT DO NOT SCALE FROM THE DRAWING.  
THE CONTRACTOR AND HIS SUB-CONTRACTORS ARE TO VERIFY ALL  
DIMENSIONS ON SITE BEFORE MAKING SHOP DRAWINGS OR  
COMMENCING MANUFACTURE.

**United Nations Development Programme**  
**UNDP Lebanon**  
Social and Local Development Programme  
P.O. Box 115047 Beirut, Lebanon 10 501 15047

**Lebanese Host Communities**  
Support Programme

CONSULTANT:

**Project**  
WEST BEKAA - AGRICULTURE DEVELOPMENT CENTER  
PLOT # 442

**Drawing Title**  
**GROUND & MEZZANINE**  
**FLOORS BLOCK B**

Scale: 1/150 Sheet Size: A1

Approved By: V.B Date: July-2016

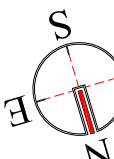
Checked By: V.B Date: July-2016

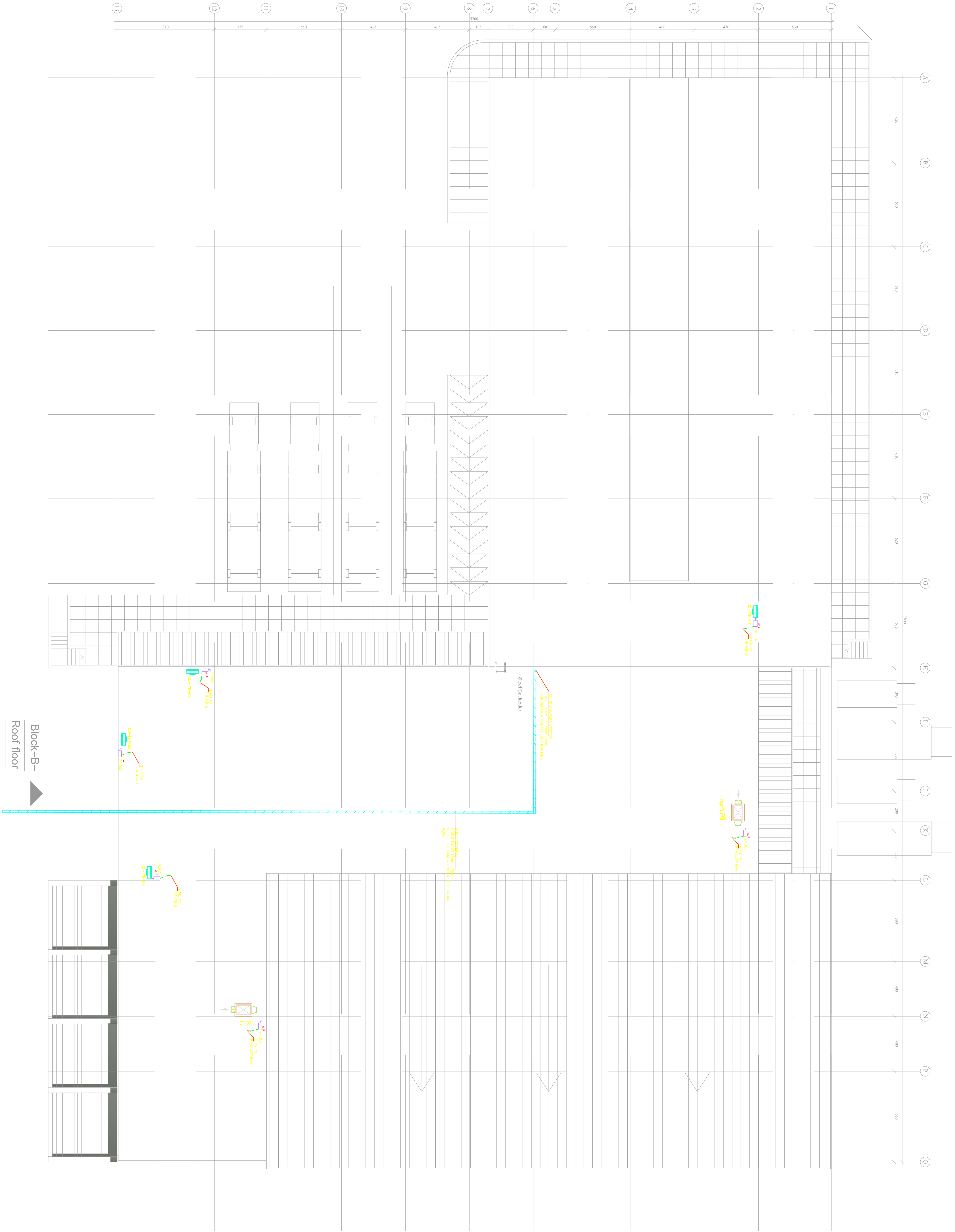
Drawn By: H.R Date: July-2016

Client Code:

Drawing No. L1003D-AB-101 Rev. 1

Approvals






THIS DRAWING IS A COPYRIGHT DO NOT SCALE FROM THE DRAWING.  
THE CONTRACTOR AND HIS SUB-CONTRACTORS ARE TO VERIFY ALL  
DIMENSIONS ON SITE BEFORE MAKING SHOP DRAWINGS OR  
COMMENCING MANUFACTURE.

United Nations Development Programme  
UNDP Lebanon  
Social and Local Development Programme  
10030D-EB-102  
10030D-EB-102 (Rev. 10/01/2016)

Lebanese Host Communities  
Support Programme

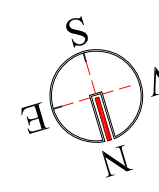
CONSULTANT:

Project  
WEST BEKAA - AGRICULTURE DEVELOPMENT CENTER  
PLOT # 442

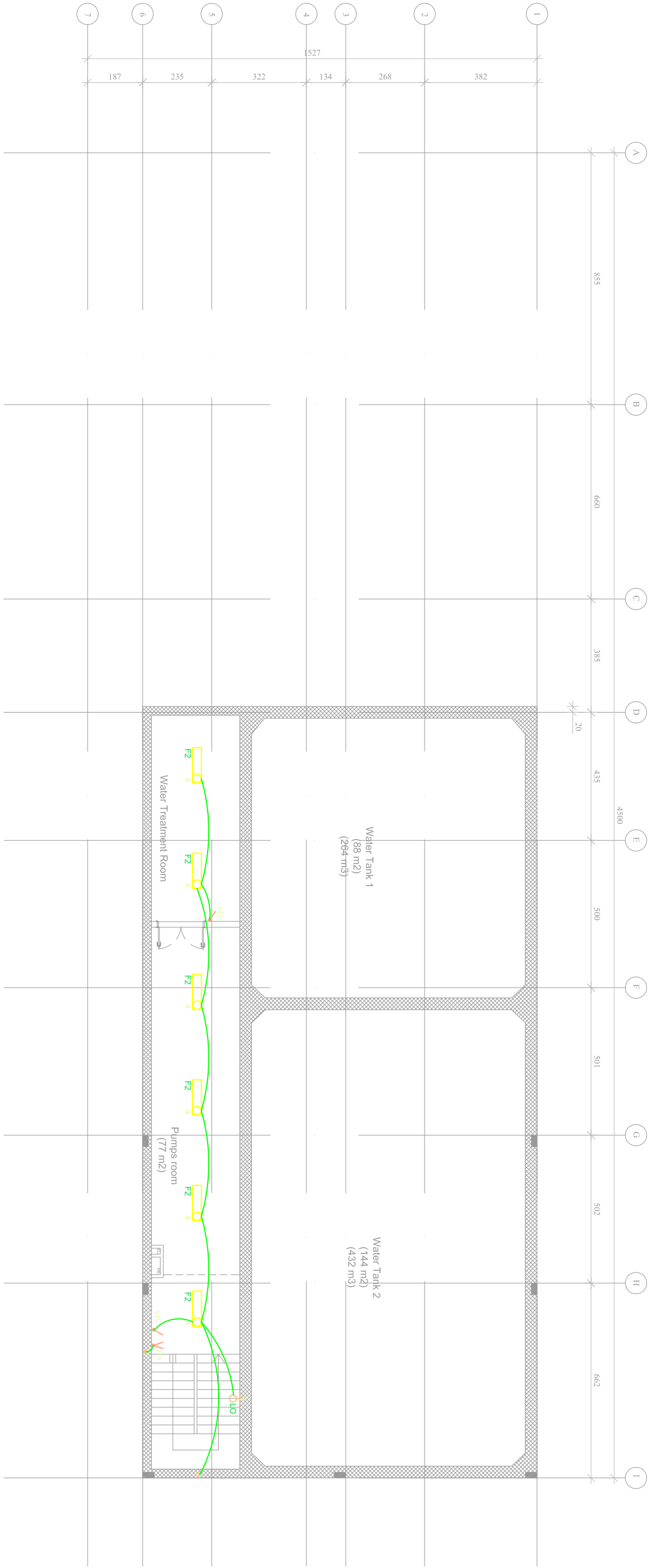
Drawing Title  
ELECTRICAL

POWER LAYOUT BLOCK-B-

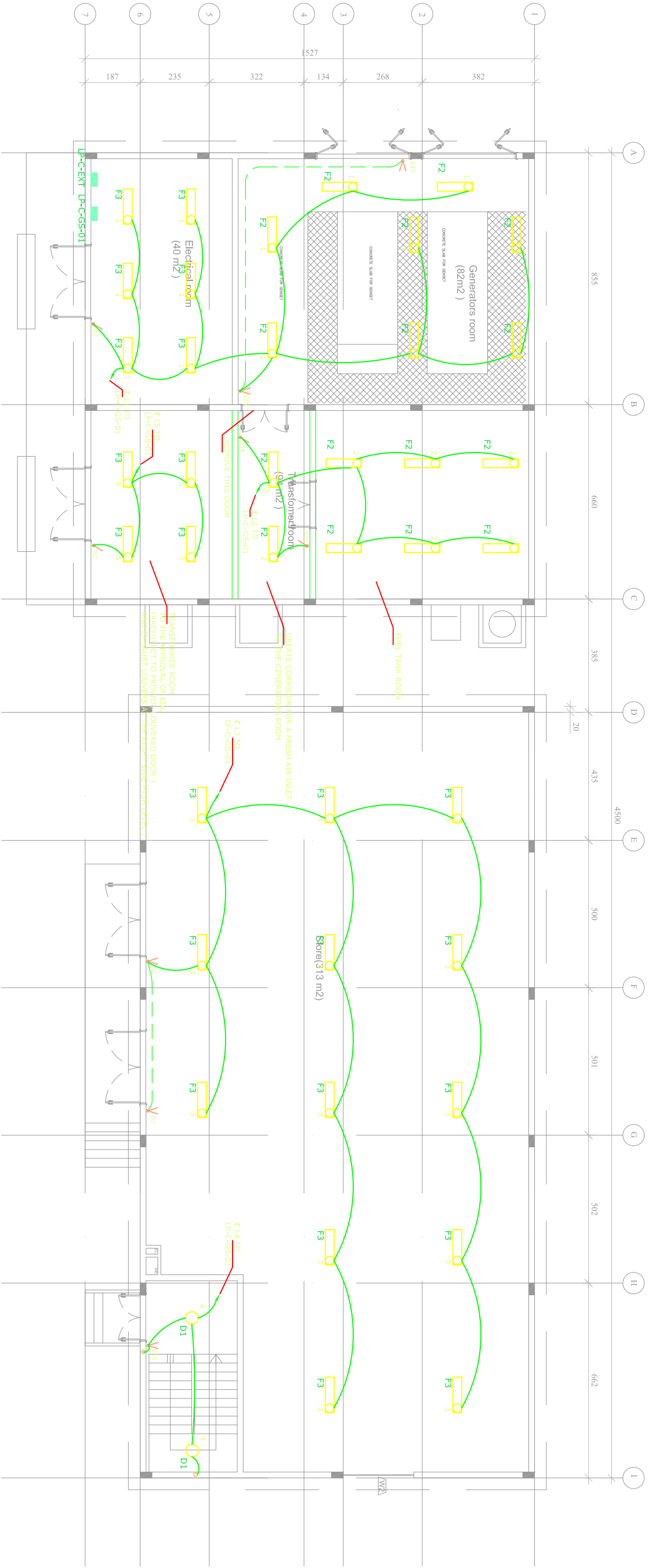
Scale: 1/200	Sheet Size: A1	
Approved By: V.B	Date: July-2016	
Checked By: V.B	Date: July-2016	
Drawn By: H.R	Date: July-2016	
Client Code:		
Drawing No. L10030D-EB-102	Rev. 1	
Approvals		








Block-C-  
Basement floor




Block-C-  
Ground floor

Rev.	Date	Description	Checked	Approved

THIS DRAWING IS A COPYRIGHT DO NOT SCALE FROM THE DRAWING.  
THE CONTRACTOR AND HIS SUB-CONTRACTORS ARE TO VERIFY ALL  
DIMENSIONS ON SITE BEFORE MAKING SHOP DRAWINGS OR  
COMMENCING MANUFACTURE.

  
United Nations Development Programme  
UNDP Lebanon  
Social and Local Development Programme  
P.O. Box 115347 Beirut, Lebanon Tel: 81 152501

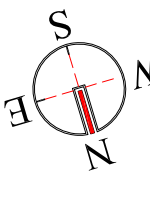
  
Lebanese Host Communities  
Support Programme

CONSULTANT:

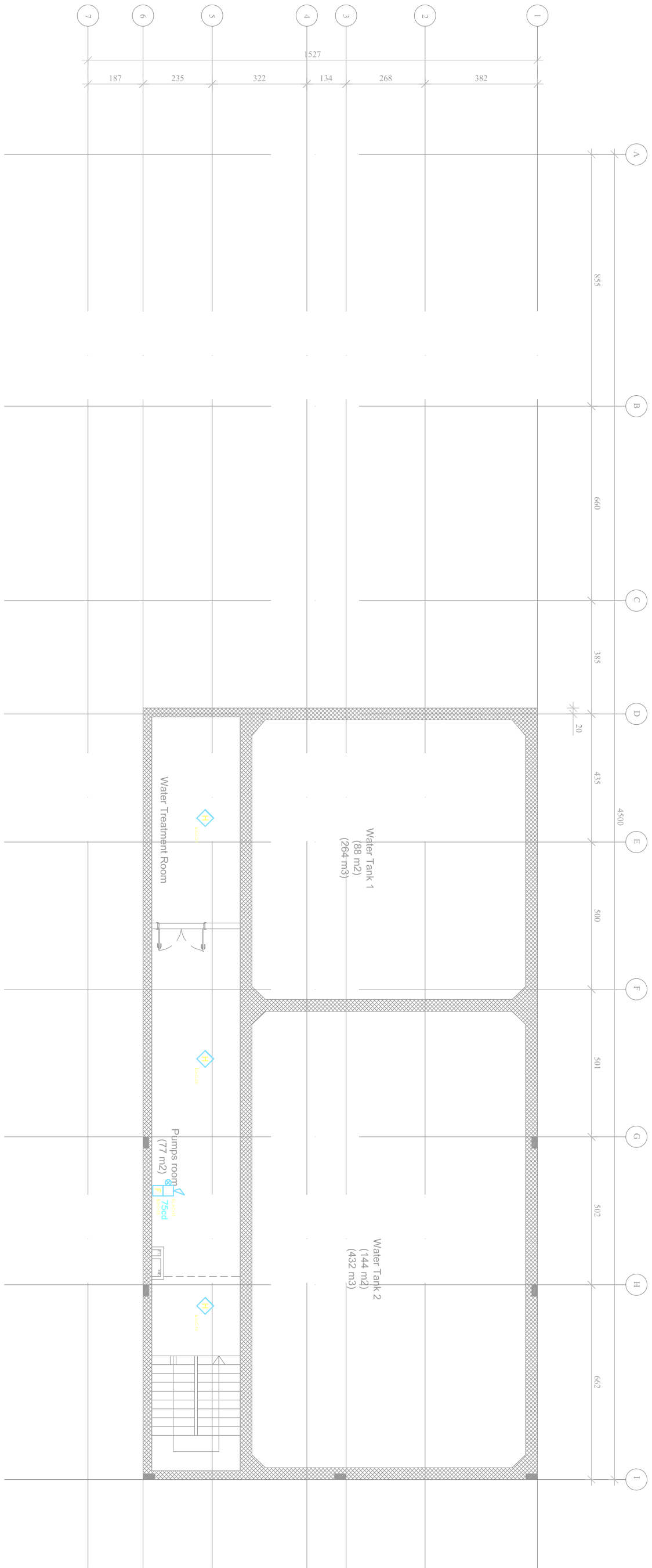
Project  
WEST BEKAA - AGRICULTURE DEVELOPMENT CENTER  
PLOT # 442

Drawing Title  
ELECTRICAL  
LIGHTING LAYOUT BLOCK-C-

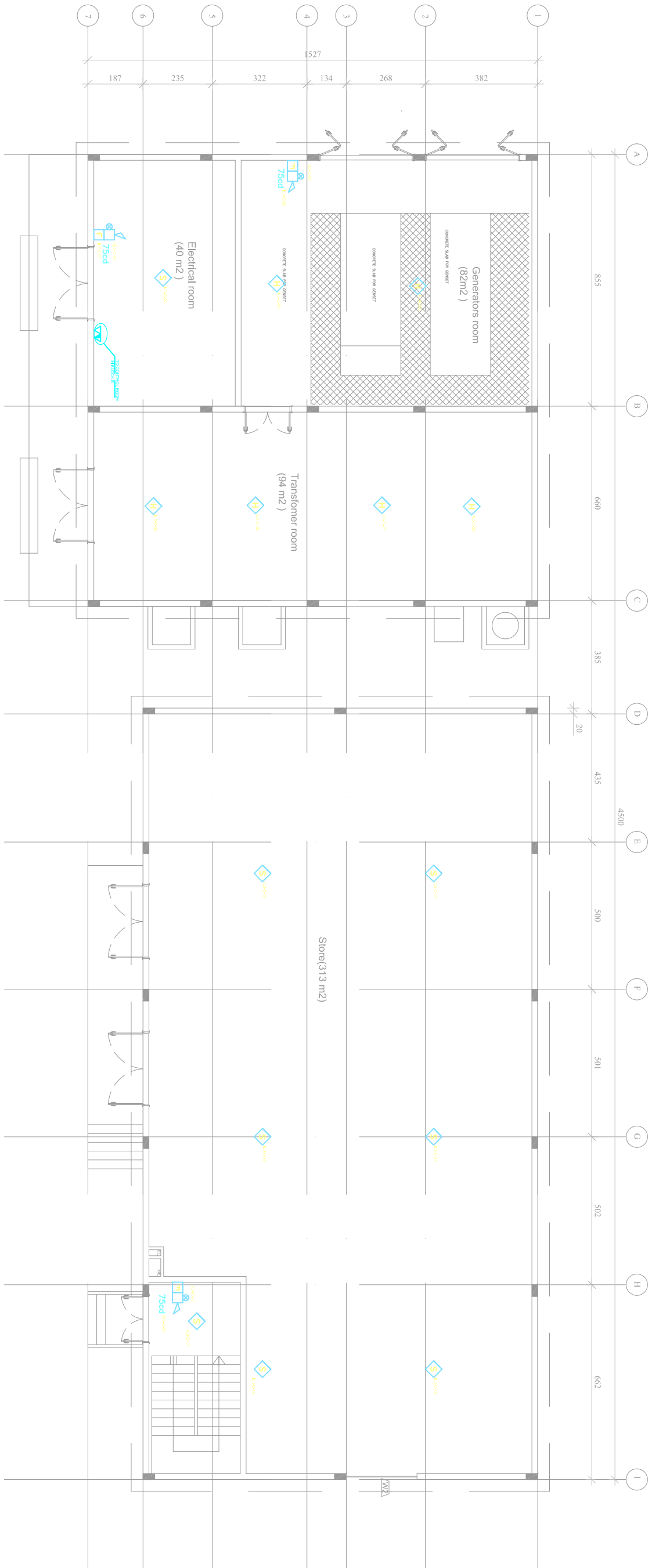
Scale: 1/100	Sheet Size: A1	
Approved By: V.B	Date: July-2016	
Checked By: V.B	Date: July-2016	
Drawn By: H.R	Date: July-2016	
Client Code:		
Drawing No. L1003D-E-C-100	Rev. 0	
Approvals		







Block-C-  
Basement floor



Block-C-  
Ground floor

Rev.	Date	Description	Checked	Approved

THIS DRAWING IS A COPYRIGHT DO NOT SCALE FROM THE DRAWING.  
THE CONTRACTOR AND HIS SUB-CONTRACTORS ARE TO VERIFY ALL  
DIMENSIONS ON SITE BEFORE MAKING SHOP DRAWINGS OR  
COMMENCING MANUFACTURE.

United Nations Development Programme  
UNDP Lebanon  
Social and Local Development Programme  
15, Souk 115341 Beirut, Lebanon Tel: 811 15341

Lebanese Host Communities  
Support Programme

CONSULTANT:

Project  
WEST BEKAA- AGRICULTURE DEVELOPMENT CENTER  
PLOT # 442

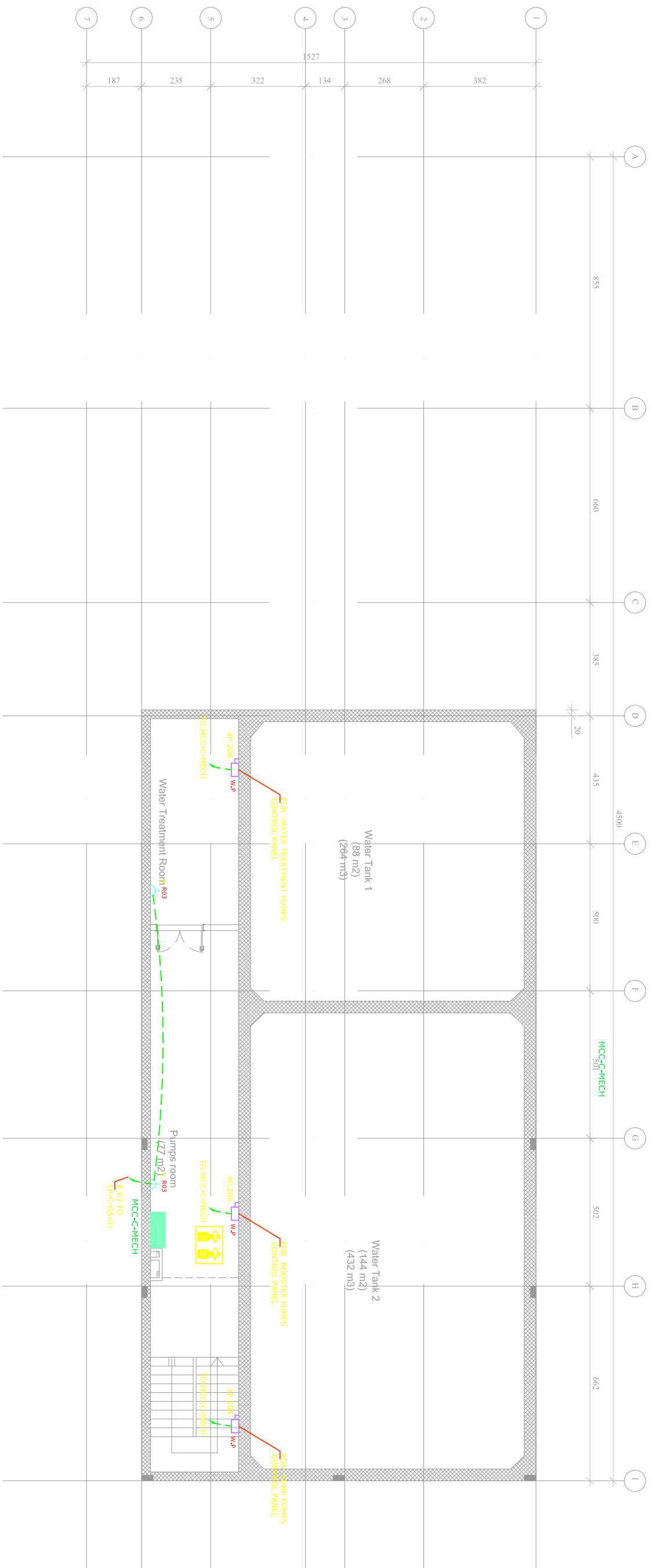
Drawing Title

ELECTRICAL

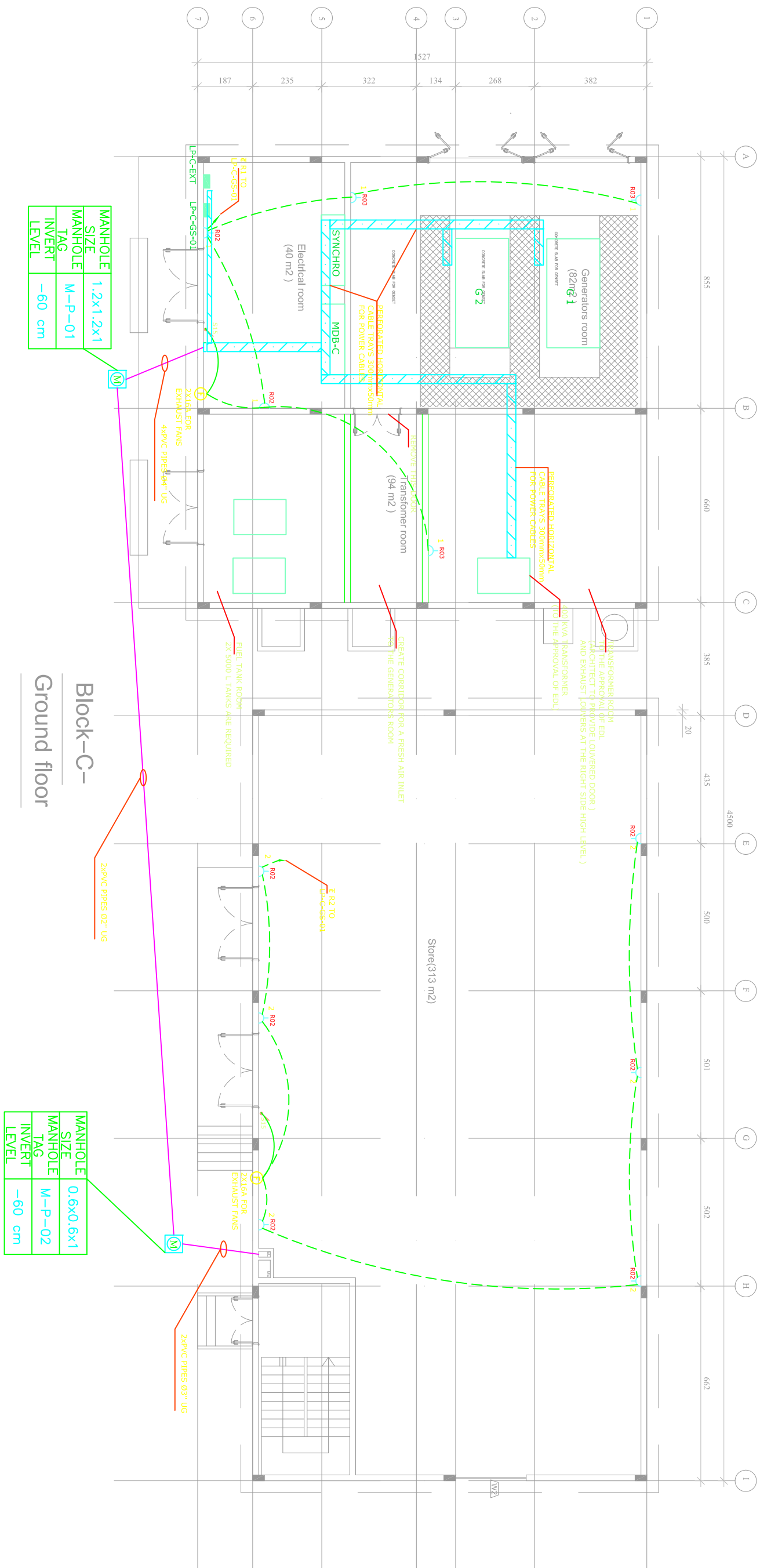
FIRE ALARM LAYOUT BLOCK-C-

Scale: 1/100	Sheet Size: A1	
Approved By: V.B	Date: July-2016	
Checked By: V.B	Date: July-2016	
Drawn By: H.R	Date: July-2016	
Client Code:		
Drawing No. L1003D-E-C-104	Rev. 0	
Approvals		





Block-C--  
Basement floor



Project	WEST BEKAA - AGRICULTURE DEVELOPMENT CENTER
PLOT #	442
Drawing Title	ELECTRICAL
AC-POWER LAYOUT BLOCK-C-	

Scale: 1/100	Sheet Size: A1
Approved By: V.B	Date: July-2016
Checked By: V.B	Date: July-2016
Drawn By: H.R	Date: July-2016
Client Code:	
Drawing No. L1003D-E-C-105	Rev. 1
Approvals	

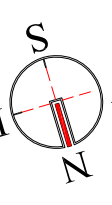
Rev.	Date	Description	Checked	Approved

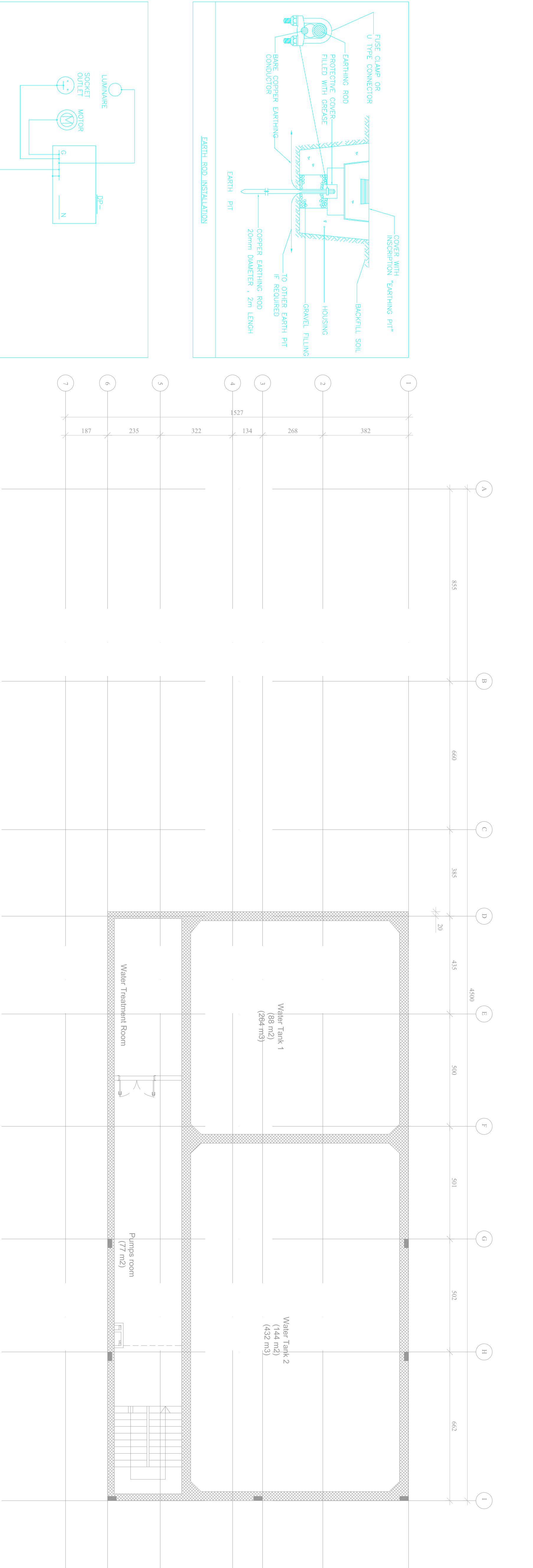
THIS DRAWING IS A COPYRIGHT DO NOT SCALE FROM THE DRAWING.  
THE CONTRACTOR AND HIS SUB-CONTRACTORS ARE TO VERIFY ALL  
DIMENSIONS ON SITE BEFORE MAKING SHOP DRAWINGS OR  
COMMENCING MANUFACTURE.

United Nations Development Programme  
UNDP Lebanon  
Social and Local Development Programme  
10, Souf 115041 Beirut, Lebanon Tel: 81 15000

Lebanese Host Communities  
Support Programme

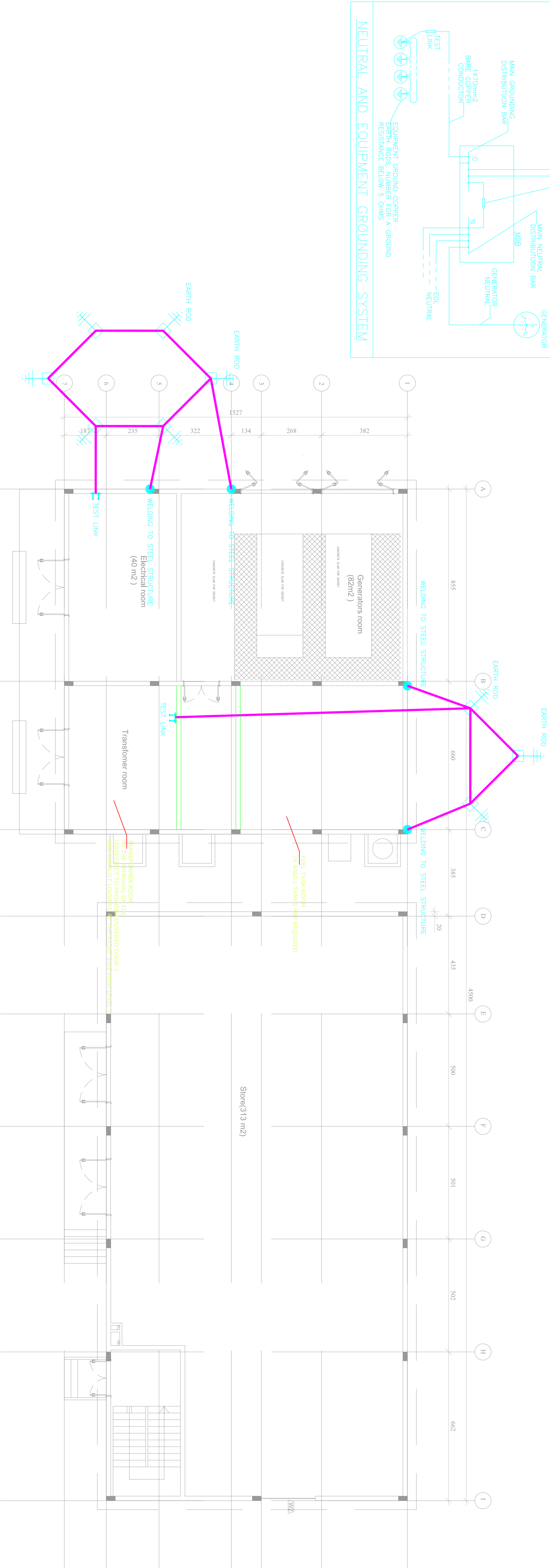
CONSULTANT:





Block-C-

Basement floor



Block-C-

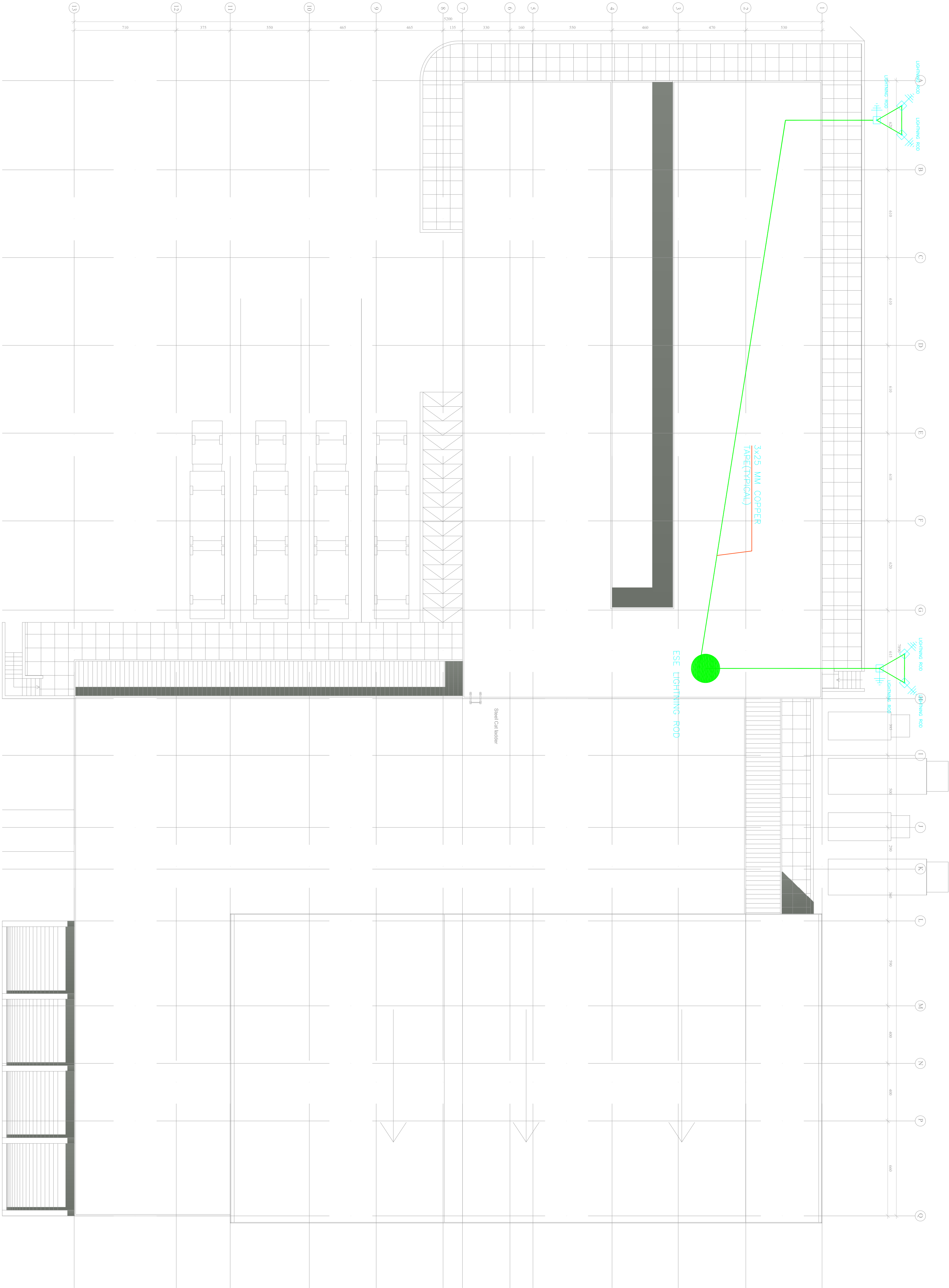
Ground floor

Rev.	Date	Description	Checked	Approved	
THIS DRAWING IS A COPYRIGHT DO NOT SCALE FROM THE DRAWING. THE CONTRACTOR AND HIS SUB-CONTRACTORS ARE TO VERIFY ALL DIMENSIONS ON SITE BEFORE MAKING SHOP DRAWINGS OR COMMENCING MANUFACTURE.					
PROGRAMME:					
United Nations Development Programme Social and Local Development Programme DIT F.O. Box 115041 Beirut, Lebanon Tel: 81 15500					
CONSULTANT:					
Lebanese Host Communities Support Programme					
PROJECT:					
WEST BEKAA - AGRICULTURE DEVELOPMENT CENTER PLOT # 442					
Drawing Title					
ELECTRICAL					
GROUNDING SYSTEM					
Scale: N.T.S.	Sheet Size: A1				
Approved By: V.B	Date: July-2016				
Checked By: V.B	Date: July-2016				
Drawn By: H.R	Date: July-2016				
Client Code:					
Drawing No. L10030D-GE-103	Rev. 0				
Approvals					









Block-B-  
Roof floor

Rev.	Date	Description	Checked	Approved

THIS DRAWING IS A COPYRIGHT DO NOT SCALE FROM THE DRAWING.  
THE CONTRACTOR AND HIS SUB-CONTRACTORS ARE TO VERIFY ALL  
DIMENSIONS ON SITE BEFORE MAKING SHOP DRAWINGS OR  
COMMENCING MANUFACTURE.

United Nations Development Programme  
UNDP Lebanon  
Social and Local Development Programme  
10, Souk 11, Souk Beirut, Lebanon 101 5011 15000

Lebanese Host Communities  
Support Programme

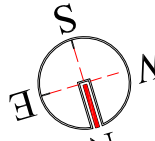
CONSULTANT:

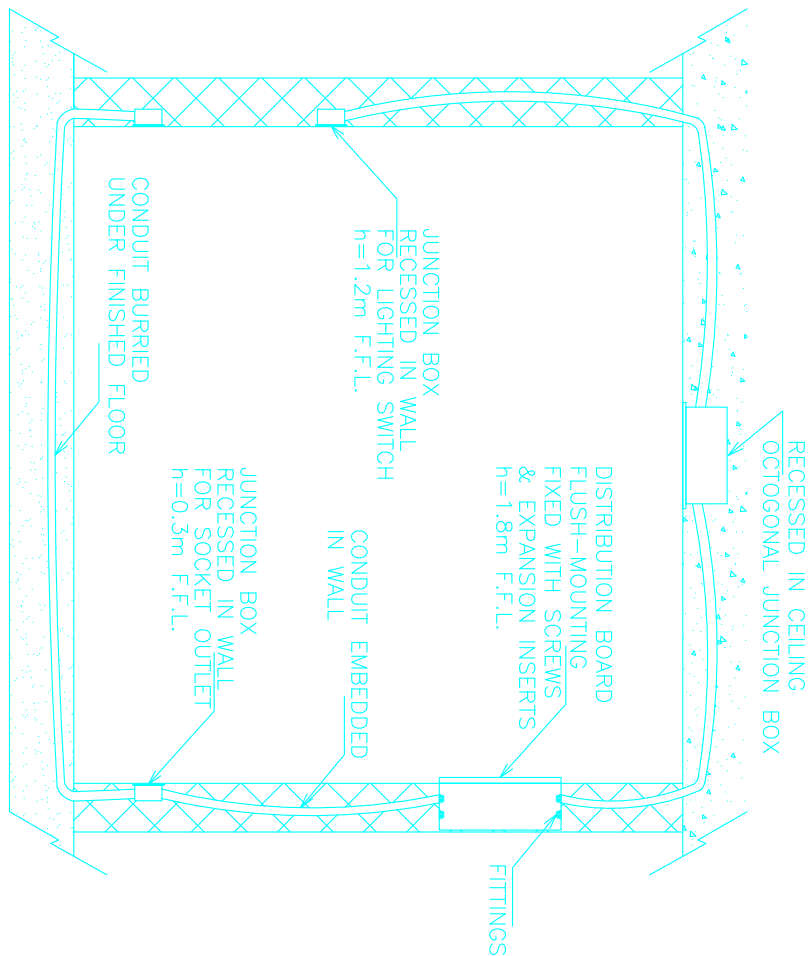
Project  
WEST BEKKA - AGRICULTURE DEVELOPMENT CENTER  
PLOT # 442

Drawing Title  
ELECTRICAL

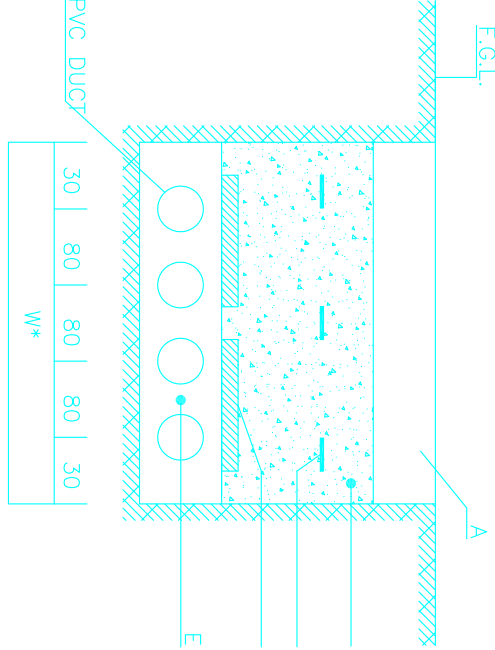
LIGHTNING LAYOUT BLOCK-B-

Scale: 1/200	Sheet Size: A1	
Approved By: V.B	Date: July-2016	
Checked By: V.B	Date: July-2016	
Drawn By: H.R	Date: July-2016	
Client Code:		
Drawing No. L1003D-E-B-106	Rev. 0	
Approvals		



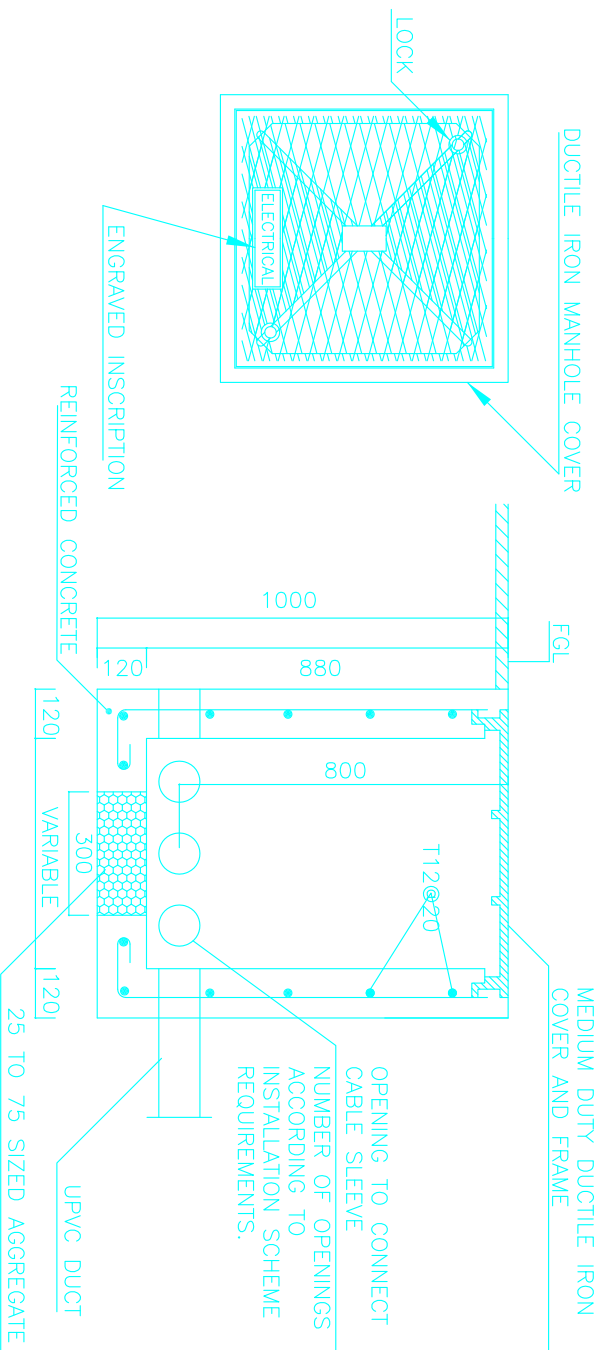


CONNECTION FOR FLUSH-MOUNTING  
(OR SEMI-RECESSED) PANEL BOARD

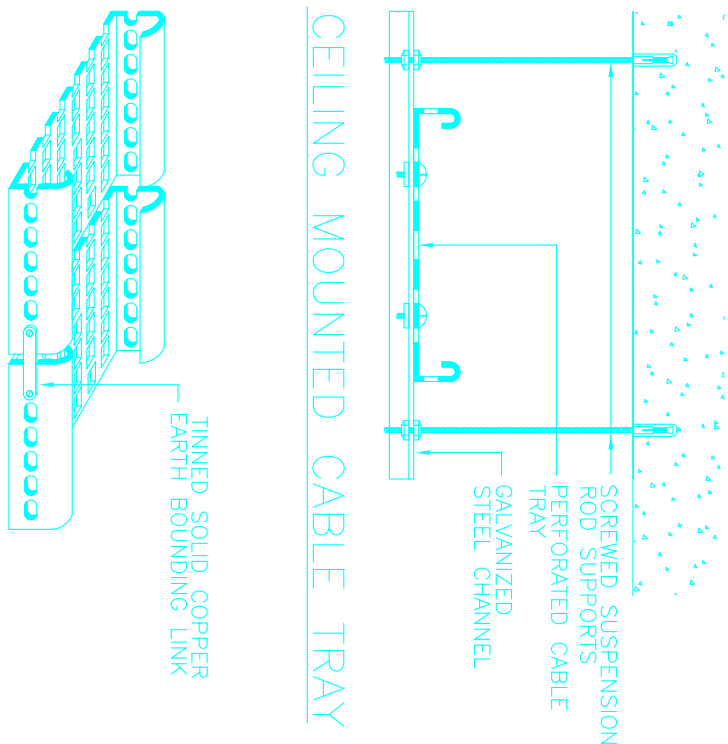


- A- PAVEMENT OR SOIL  
B- COMPACTED BACKFILL SOIL  
C- COMPACTED BACKFILL SOIL  
D- CENTERLINE SPACING 500mm  
E- SLOPED DRY SAND  
F- SLOPED DRY SAND
- \* W = 300mm FOR 1 DUCT  
W = 400mm FOR 2 DUCTS  
W = 500mm FOR 3 DUCTS  
W = 600mm FOR 4 DUCTS  
W = 700mm FOR 5 DUCTS

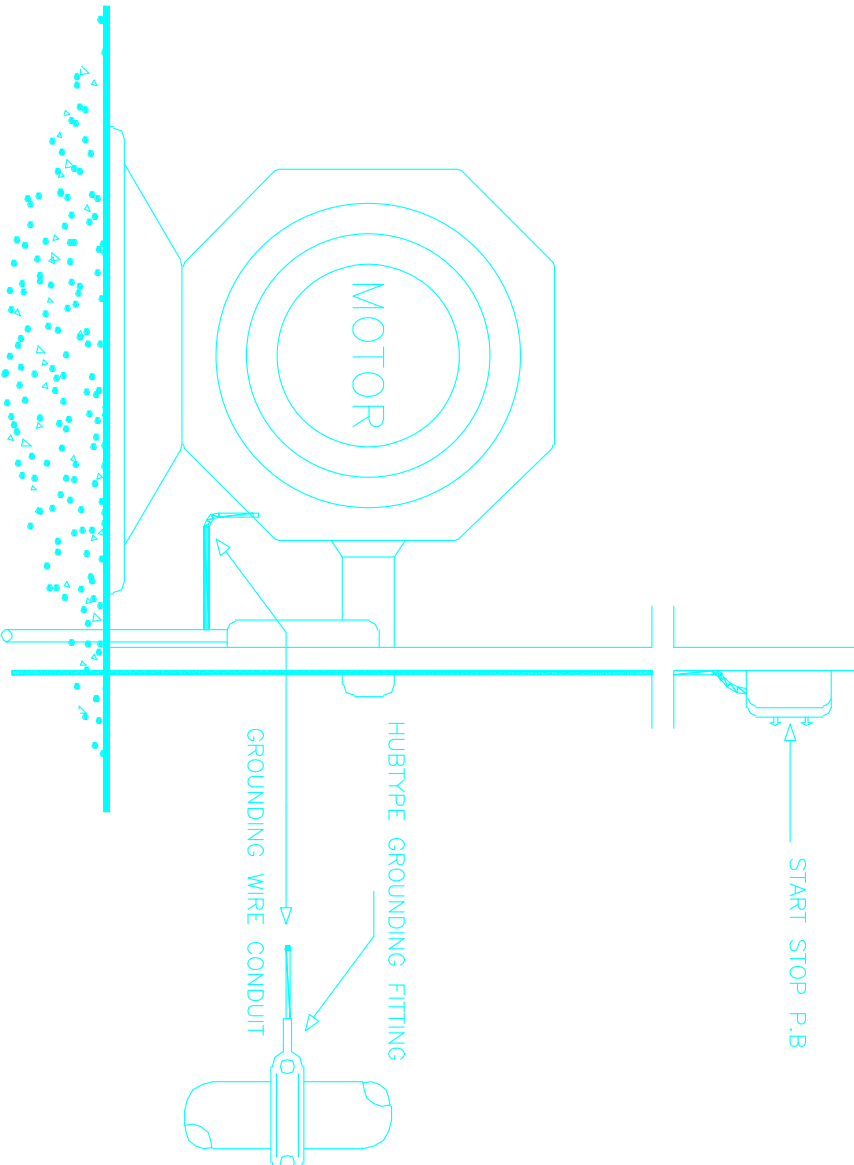
BURIED UNDERGROUND UPVC DUCTS



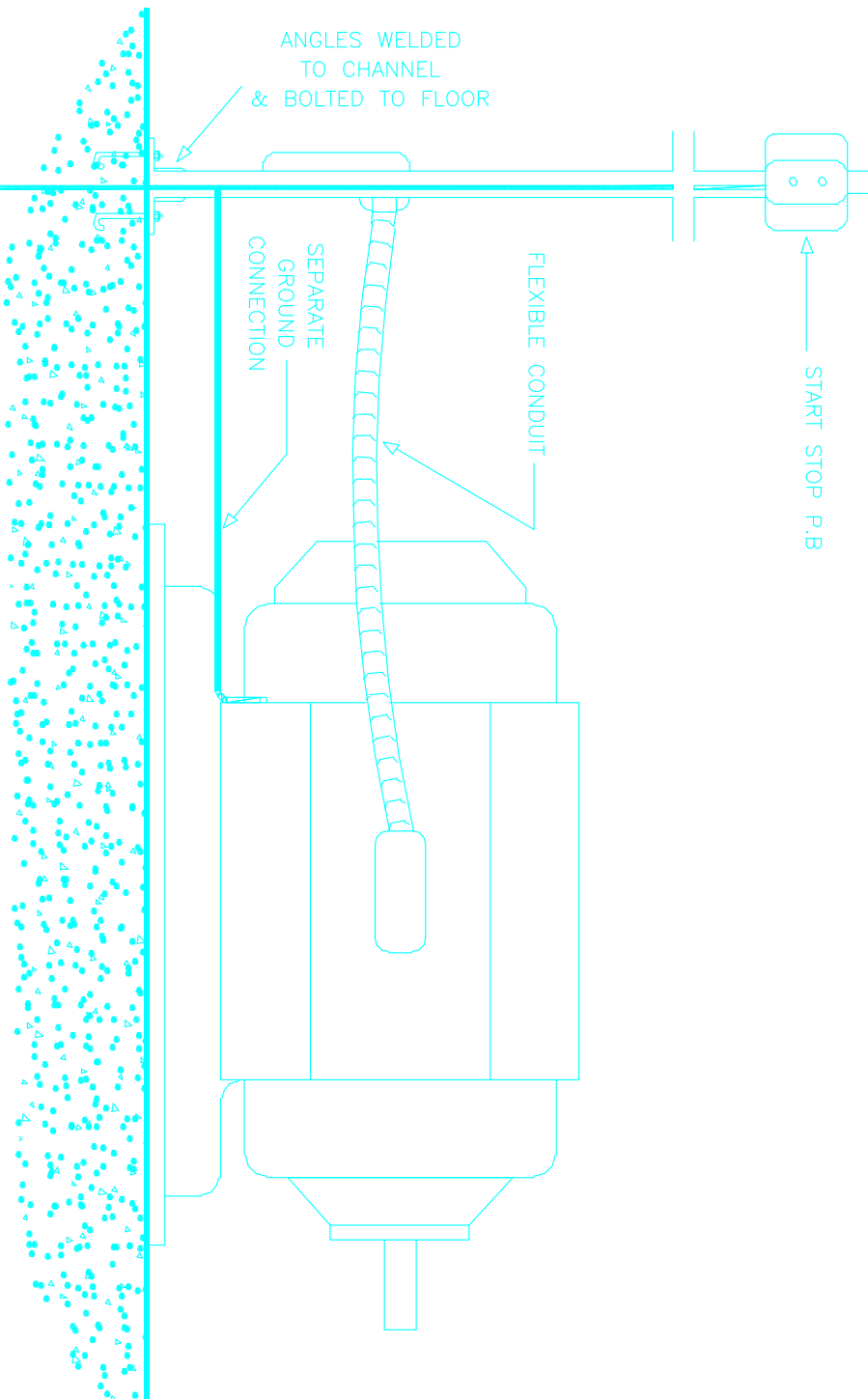
ELECTRIC MANHOLE & UPVC DUCTS DISTRIBUTION



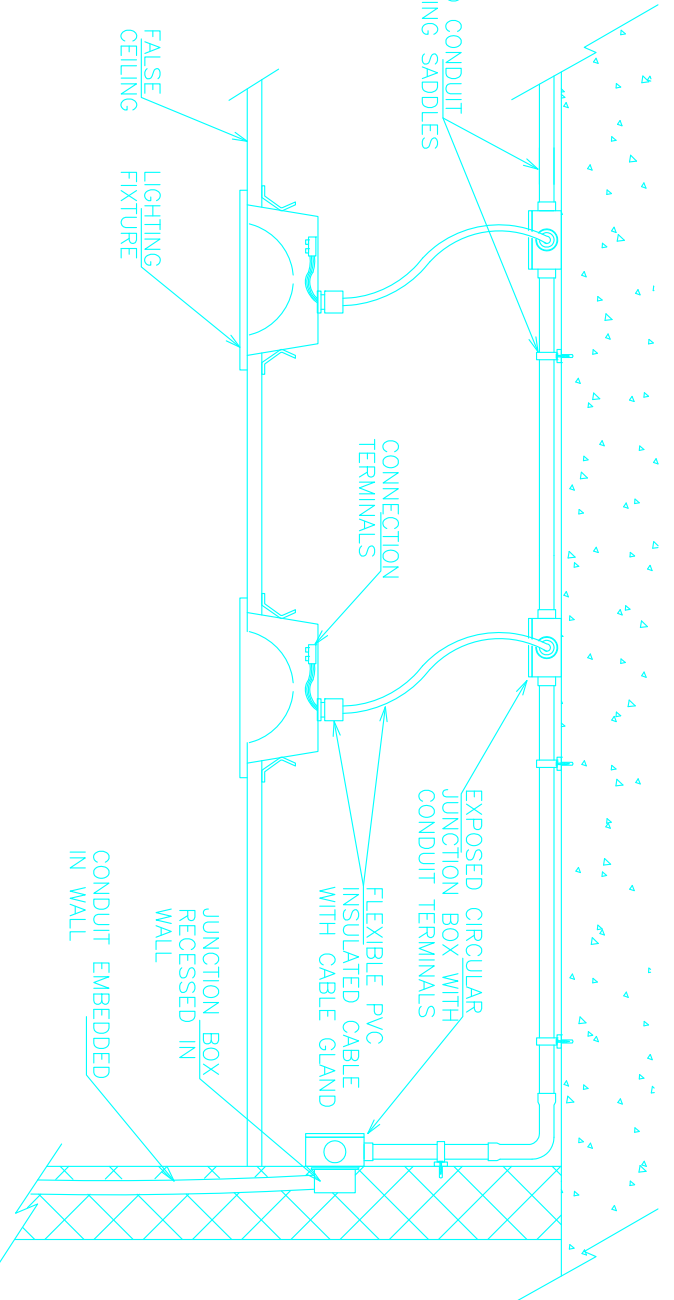
CABLE TRAY BOUNDING



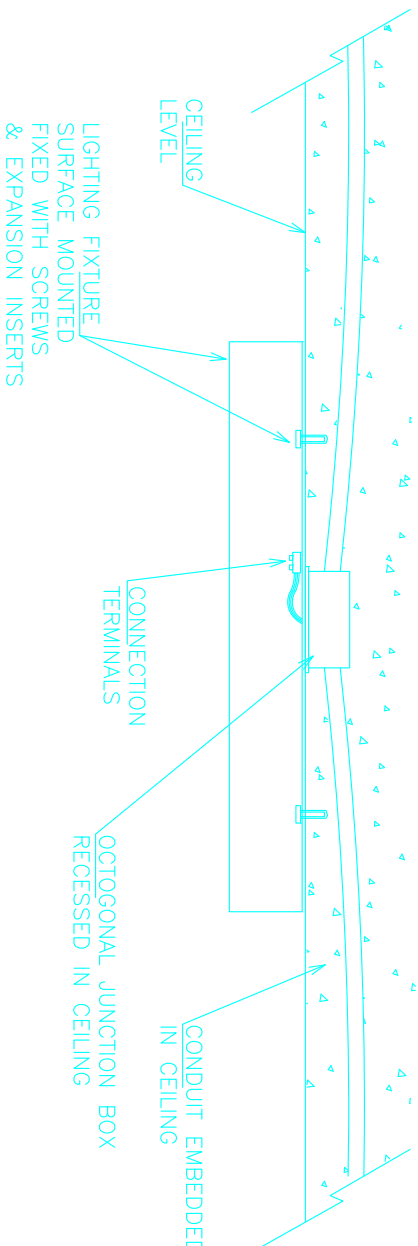
MOTOR CONNECTION FRONT VIEW



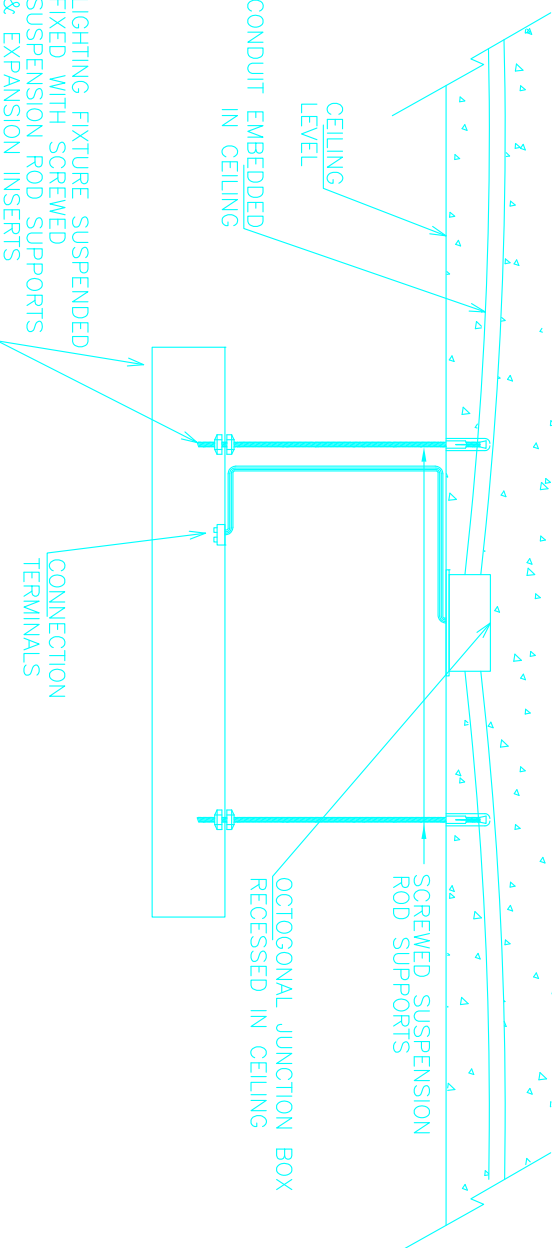
MOTOR CONNECTION SIDE VIEW



CONNECTION OF LIGHTING FIXTURE  
RECESSED IN FALSE CEILING



CONNECTION OF LIGHTING FIXTURE  
SURFACE MOUNTED



CONNECTION OF SUSPENDED LIGHTING FIXTURE


THIS DRAWING IS A COPYRIGHT DO NOT SCALE FROM THE DRAWING.  
THE CONTRACTOR AND HIS SUB-CONTRACTORS ARE TO VERIFY ALL  
DIMENSIONS ON SITE BEFORE MAKING SHOP DRAWINGS OR  
COMMENCING MANUFACTURE.

United Nations Development Programme  
UNDP Lebanon  
Social and Local Development Programme  
10, Rue 115001 Beirut, Lebanon (Tel: 81 15000)

Lebanese Host Communities  
Support Programme

CONSULTANT:

Project:  
WEST BEKKA - AGRICULTURE DEVELOPMENT CENTER  
PLOT # 442







Electrical

TYPICAL DETAILS

Scale: N.T.S.	Sheet Size: A1	
Approved By: V.B	Date: July-2016	
Checked By: V.B	Date: July-2016	
Drawn By: H.R	Date: July-2016	
Client Code:		
Drawing No. L10030-DE-GE-104	Rev. 0	
Approve		



PROJECT: WEST BECCA -ADC		VOLTAGE: 380V/220V/50HZ	
PANELBOARD: LP - A - GS -01		MOUNTING: SURFACE MOUNTED	
LOCATION: BLOCK -A		FED FROM: SDBA - S.C LEVEL: 100KA	
DESCRIPTION	CIR		
	R	Y	B
LOAD (VA)			
Ref			
WIRE mm2			
CIRCUIT BREAKER(A) RATING			
LTO SHOP 1	850	L1	2x2.5+2.5
LTO SHOP 2	500	L2	2x2.5+2.5
LTO SHOP 3	500	L3	2x2.5+2.5
LTO TOILETS	100	L4	2x2.5+2.5
SPARE		L5	1x10
SPARE		L6	1x10
SPARE		L7	1x10
SPARE		L8	1x10
SO SHOP 1	800	R1	2x2.5+2.5
SO SHOP 2	600	R2	2x2.5+2.5
SO SHOP 3	600	R3	2x2.5+2.5
SPARE		R4	1x16
SPARE		R5	1x16
EWI	1500	R6	1x16
SPARE		R7	1x16
SPARE		R8	1x16
SPARE		R9	1x16
MECH SHOP 1 AC UNIT	2500	M1	2 x 4 + 4
MECH SHOP 1 AC UNIT	2500	M2	2 x 4 + 4
MECH SHOP 2 AC UNIT	2500	M3	2 x 4 + 4
MECH SHOP 3 AC UNIT	2500	M4	2 x 4 + 4
SPARE		M5	1x20
SPARE		M6	1x20
SPARE		M7	1x20
SPARE		M8	1x20
SPARE		M9	1x20
TOTAL LOAD	TOTAL	TOTAL	DETAILED MAIN CABLE
CONNECTED LOAD	6750	3600	5100
DEMAND LOAD	5565	2940	4520
			4x40 A Main Switch

PROJECT: WEST BECA - ADC		VOLTAGE: 380V/220V/50HZ			
PANELBOARD: LP - B - GS -01		MOUNTING: SURFACE MOUNTED			
LOCATION: BLOCK - B		FED FROM: SDB-B S.C LEVEL: 100A			
DESCRIPTION	LOAD (VA)		CIR Ref	WIRE mm2	CIRCUIT BREAKER(A) RATING
	R	Y			
LTG. CONTROL ROOM	900		L1	2x2.5+2.5	1x10 
LTG. RECEPTION		1400	L2	2x2.5+2.5	1x10
LTG. FREEREPLANTATION		250	L3	2x2.5+2.5	1x10
LTG. COLD ROOMS	1350		L4	2x2.5+2.5	1x10
LTG. COLD ROOMS		450	L5	2x2.5+2.5	1x10
LTG. COLD ROOMS			L6	2x2.5+2.5	1x10
LTG. CONTROL ROOM 2	850		L7	2x2.5+2.5	1x10
LTG. TECHNICAL ZONE		500	L8	2x2.5+2.5	1x10
LTG. TOILETS		500	L9	2x2.5+2.5	1x10
LTG. STAIRCASEMECH ROOM	850		L10	2x2.5+2.5	1x10
SPACE			L11		1x10
SPACE			L12		1x10
SO. CONTROL ROOMRECEPTION	1000		R1	2x2.5+2.5	1x16 
SO. CONTROL ROOM 2		400	R2	2x2.5+2.5	1x16
SO. TECHNICAL ZONE		800	R3	2x2.5+2.5	1x16
EXHAUST FANS	250		R4		1x16
SPACE			R5		1x16
EMH		2000	R6		1x16 
MECH. RECEPTION AC UNIT	2500		M1	2 x 4 + 4	1x20 
MECH. RECEPTION AC UNIT		2500	M2	2 x 4 + 4	1x20
MECH. CONTROL RM 1 AC UNIT		2500	M3	2 x 4 + 4	1x20
MECH. CONTROL RM 2 AC UNIT	2500		M4	2 x 4 + 4	1x20
SPACE			M5		1x20
SPACE			M6		1x20 
TOTAL LOAD	TOTAL	TOTAL	DETA. F. MAIN CABLE		4x10 A Main Switch 
CONNECTED LOAD	10100	5200	7400	4x10+10	
DEMAND LOAD	8040	4230	5010		

PROJECT: WEST BEKA - ADC		VOLTAGE: 380V/220V/50HZ			
PANELBOARD: LP - B - GS-02		MOUNTING: SURFACE MOUNTED			
LOCATION: BLOCK - B		FED FROM: SDB-B S.C LEVEL: 100A			
DESCRIPTION	LOAD (VA)		CIR Ref	WIRE mm2	CIRCUIT BREAKER(A) RATING
	R	Y			
LITG, GENERAL DOCK LIGHTING	1250		L1	2x2.5+2.5	<div><div>2x10</div><div>1x10</div><div><div><div></div><div></div><div></div></div></div></div>
LITG, GENERAL DOCK LIGHTING		1250	L2	2x2.5+2.5	<div><div>2x10</div><div>1x10</div><div><div><div></div><div></div><div></div></div></div></div>
LITG, GENERAL DOCK LIGHTING		1250	L3	2x2.5+2.5	<div><div>2x10</div><div>1x10</div><div><div><div></div><div></div><div></div></div></div></div>
LITG, GENERAL DOCK LIGHTING	1250		L4	2x2.5+2.5	<div><div>2x10</div><div>1x10</div><div><div><div></div><div></div><div></div></div></div></div>
LITG, GENERAL DOCK LIGHTING		1250	L5	2x2.5+2.5	<div><div>2x10</div><div>1x10</div><div><div><div></div><div></div><div></div></div></div></div>
LITG, GENERAL DOCK LIGHTING			L6	2x2.5+2.5	<div><div>2x10</div><div>1x10</div><div><div><div></div><div></div><div></div></div></div></div>
SPACE			L7		<div><div>4x20</div><div>30 mA</div><div><div><div></div><div></div><div></div></div></div></div>
SPACE			L8		<div><div>2x10</div><div>1x10</div><div><div><div></div><div></div><div></div></div></div></div>
SPACE			L9		<div><div>1x10</div><div></div><div><div><div></div><div></div><div></div></div></div></div>
S.O. GENERAL SOCKETS	600		R1	2x2.5+2.5	<div><div>1x16</div><div></div><div><div><div></div><div></div><div></div></div></div></div>
S.O. GENERAL SOCKETS		400	R2	2x2.5+2.5	<div><div>1x16</div><div></div><div><div><div></div><div></div><div></div></div></div></div>
SPACE			R3	2x2.5+2.5	<div><div>1x16</div><div></div><div><div><div></div><div></div><div></div></div></div></div>
SPACE			R4		<div><div>1x16</div><div></div><div><div><div></div><div></div><div></div></div></div></div>
MECH, COOLER UNIT	1500		M1		<div><div>3x20</div><div></div><div><div><div></div><div></div><div></div></div></div></div>
MECH, COOLER UNIT		1500	M2	4 x 4 + 4	<div><div>3x20</div><div></div><div><div><div></div><div></div><div></div></div></div></div>
MECH, COOLER UNIT	1500		M3		<div><div>3x20</div><div></div><div><div><div></div><div></div><div></div></div></div></div>
MECH, COOLER UNIT		1500	M4		<div><div>3x20</div><div></div><div><div><div></div><div></div><div></div></div></div></div>
MECH, COOLER UNIT		1500	M5	4 x 4 + 4	<div><div>3x20</div><div></div><div><div><div></div><div></div><div></div></div></div></div>
MECH, COOLER UNIT	1500		M6		<div><div>4x20</div><div></div><div><div><div></div><div></div><div></div></div></div></div>
MECH, COOLER UNIT		1500	M7		<div><div>3x20</div><div></div><div><div><div></div><div></div><div></div></div></div></div>
MECH, COOLER UNIT	1500		M8	4 x 4 + 4	<div><div>3x20</div><div></div><div><div><div></div><div></div><div></div></div></div></div>
MECH, COOLER UNIT		1500	M9		<div><div>3x20</div><div></div><div><div><div></div><div></div><div></div></div></div></div>
MECH, COOLER UNIT	1500		M10		<div><div>3x20</div><div></div><div><div><div></div><div></div><div></div></div></div></div>
MECH, COOLER UNIT		1500	M11	4 x 4 + 4	<div><div>3x20</div><div></div><div><div><div></div><div></div><div></div></div></div></div>
MECH, COOLER UNIT		1500	M12		<div><div>3x20</div><div></div><div><div><div></div><div></div><div></div></div></div></div>
TOTAL LOAD	TOTAL	TOTAL	DETA F.	MAIN CABLE	4x35 A Main Switch
CONNECTED LOAD	9100	6500		4x16+16	
DEMAND LOAD	7890	7310	7650		

PROJECT: WEST BEKA -ADC		VOLTAGE: 380V/220V/50HZ		
PANELBOARD: ULP - B - GS -01		MOUNTING: SURFACE MOUNTED		
LOCATION: BLOCK - B		FED FROM: UPS-B(GVA) S.C LEVEL: 100A		
DESCRIPTION	LOAD (VA)	CIR Ref	WIRE mm2	CIRCUIT BREAKER(A) RATING
	R			
SO. CONTROL/RECEPTION	600		F1 2x2.5+2.5	1x16 <input checked="" type="checkbox"/>
SO. CONTROL ROOM	400		F2 2x2.5+2.5	1x16 <input checked="" type="checkbox"/>
SPARE			F3 2x2.5+2.5	1x16 <input checked="" type="checkbox"/>
SPARE			F4	1x16 <input checked="" type="checkbox"/>
MISC. DATA ROUTER	200		M1 2 x 2.5 + 2.5	1x10 <input checked="" type="checkbox"/>
MISC. TV AMPLIFIERS	200		M2 2 x 2.5 + 2.5	1x10 <input checked="" type="checkbox"/>
MISC. DATA ROUTER	200		M3 2 x 2.5 + 2.5	1x10 <input checked="" type="checkbox"/>
SPARE			M4 2 x 2.5 + 2.5	1x10 <input checked="" type="checkbox"/>
MISC. FACP	400		M5 2 x 2.5 + 2.5	1x10 <input checked="" type="checkbox"/>
MISC. CCTV DVR	600		M6	1x10 <input checked="" type="checkbox"/>
MISC. CCTV CAMERAS	400		M7	1x10 <input checked="" type="checkbox"/>
MISC. CCTV CAMERAS	200		M8	1x10 <input checked="" type="checkbox"/>
SPARE			M9	1x10 <input checked="" type="checkbox"/>
TOTAL LOAD	TOTAL		DEM. F. MAIN CABLE	2x25 A Main Switch
CONNECTED LOAD	3200		2x6+5	<input checked="" type="checkbox"/>
DEMAND LOAD	3200			

PROJECT: WEST BECA - ADC						VOLTAGE: 380V/220V/50HZ	
PANELBOARD : LP - C - GS-01						MOUNTING: SURFACE MOUNTED	
LOCATION: BLOCK - A				FED FROM:		MDB-C	S.C LEVEL: 25KA
DESCRIPTION	LOAD (VA)			CIR Ref	WIRE mm2	CIRCUIT BREAKER(A) RATING	
	R	Y	B				
L7G. ELEC ROOM/GEN ROOM	1000			L1	2x2.5+2.5	1x10	
L7G. FUEL TANKS ROOM		350		L2	2x2.5+2.5	1x10	
L7G. STORE			1250	L3	2x2.5+2.5	1x10	
L7G. MECH ROOM	400			L4	2x2.5+2.5	1x10	
L7G. TRANSFORMER ROOM		150		L5		1x10	
SPARE				L6		1x10	
SPARE				L7		1x10	
SPARE				L8		1x10	
SO. ELEC ROOM/GEN ROOM	1000			R1	2x2.5+2.5	1x16	
SO. STORE		1200		R2	2x2.5+2.5	1x16	
SO. MECH ROOM			400	R3	2x2.5+2.5	1x16	
SPARE				R4		1x16	
SPARE				R5		1x16	
TOTAL LOAD	TOTAL	TOTAL	TOTAL	DETAILED	F. MAIN CABLE		
CONNECTED LOAD	2400	1700	1650	4x8+6		4x32 A Main Switch	
DEMAND LOAD	1440	1020	990				

Rev.	Date	Description	Checked	Approved

THIS DRAWING IS A COPYRIGHT. DO NOT SCALE FROM THE DRAWING. THE CONTRACTOR AND HIS SUB-CONTRACTORS ARE TO VERIFY ALL DIMENSIONS ON SITE BEFORE MAKING SHOP DRAWINGS OR COMMENCING MANUFACTURE.

United Nations Development Programme  
UNDP Lebanon  
Social and Local Development Programme  
P.O. Box: 11-3216 Beirut, Lebanon Tel: 981 1 962491

**Lebanese Host Communities  
Support Programme**

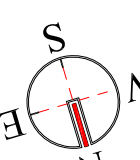
CONSULTANT:

Project  
WEST BEKA - AGRICULTURE DEVELOPMENT CENTER  
PLOT 4 AND

Drawing Title

## PANEL BOARDS SCHEDULES

Scale: N.T.S.	Sheet Size: A1		
		Date: July-2016	
	Approved By: V/B	Date: July-2016	
	Checked By: V/B	Date: July-2016	
	Drawn By: H/R	Date: July-2016	
	Client Code:		
Drawing No.	L1009D-E-GE-102	Rev.	0
Approvals			4









Reference	Lamp Details	Control Gear	Description
F1	T5, 14W	Electronic Ballast	Surface mounted luminaire for 4 fluorescent lamp TL5 14W, 220V. Luminaire body is made of sheet steel and parabolic reflector, IP20
F2	T5, 35W	Electronic Ballast	Surface mounted luminaire for 2 fluorescent lamp TL5 35W, 220V. Luminaire body is made of polycarbonate, recyclable, very low flammability, light grey. Polycarbonate to be UV stabilized with clear cover and stainless steel clips.IP66.
F21	T5, 35W	Electronic Ballast	Surface mounted luminaire for 1 fluorescent lamp TL5 35W, 220V. Luminaire body is made of polycarbonate, recyclable, very low flammability, light grey. Polycarbonate to be UV stabilized with clear cover and stainless steel clips.IP66.
F2S	T5, 35W	Electronic Ballast	Ceiling suspended luminaire for 2 fluorescent lamp TL5 28W, 220V. Luminaire body is made of polycarbonate, recyclable, very low flammability, light grey. Polycarbonate to be UV stabilized with clear cover and stainless steel clips,suspension accessories.IP66.
F3	T5, 35W	Electronic Ballast	Surface mounted luminaire for 2 fluorescent lamp TL5 35W, 220V. Luminaire body made of white sheet steel with clear cover and plastic end caps. IP40
F31	T5, 35W	Electronic Ballast	Surface mounted luminaire for 1 fluorescent lamp TL5 35W, 220V. Luminaire body made of white sheet steel with clear cover and plastic end caps. IP40
I1	TC-L 18W,2G11,1200lm output	Electronic Ballast	Ceiling downlight for 2x18W compact fluorescent lamp.Housing made of Aluminum ring and sheet steel body, white color. Aluminum reflector and transparent glass.IP44.
D1	PL-C 26W,	Electronic Ballast	Ceiling mounted luminaire for 2x26W compact fluorescent lamp. Housing made of vandal proof and shock proof material.IP44
LO	PL-C 26W,	Electronic ballast	Wall mounted luminaire for 1x26W Compact fluorescent lamp, 220V. Made of die cast aluminium housing and aluminium grill. IP54.
EX1	Fluo 8 W	Electronic ballast	Wall mounted, one sided, non decorative emergency exit lighting fixture, maintained, with all suitable labels as applicable with built in battery for 3 hours autonomy. IP65
P	Street lighting pole	Electronic Control Gear	8m street lighting pole with 250W HPS lamp. Housing made of dark grey high pressure die cast Aluminum, non corrosive with stainless steel clips. IP65



