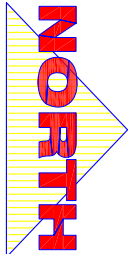
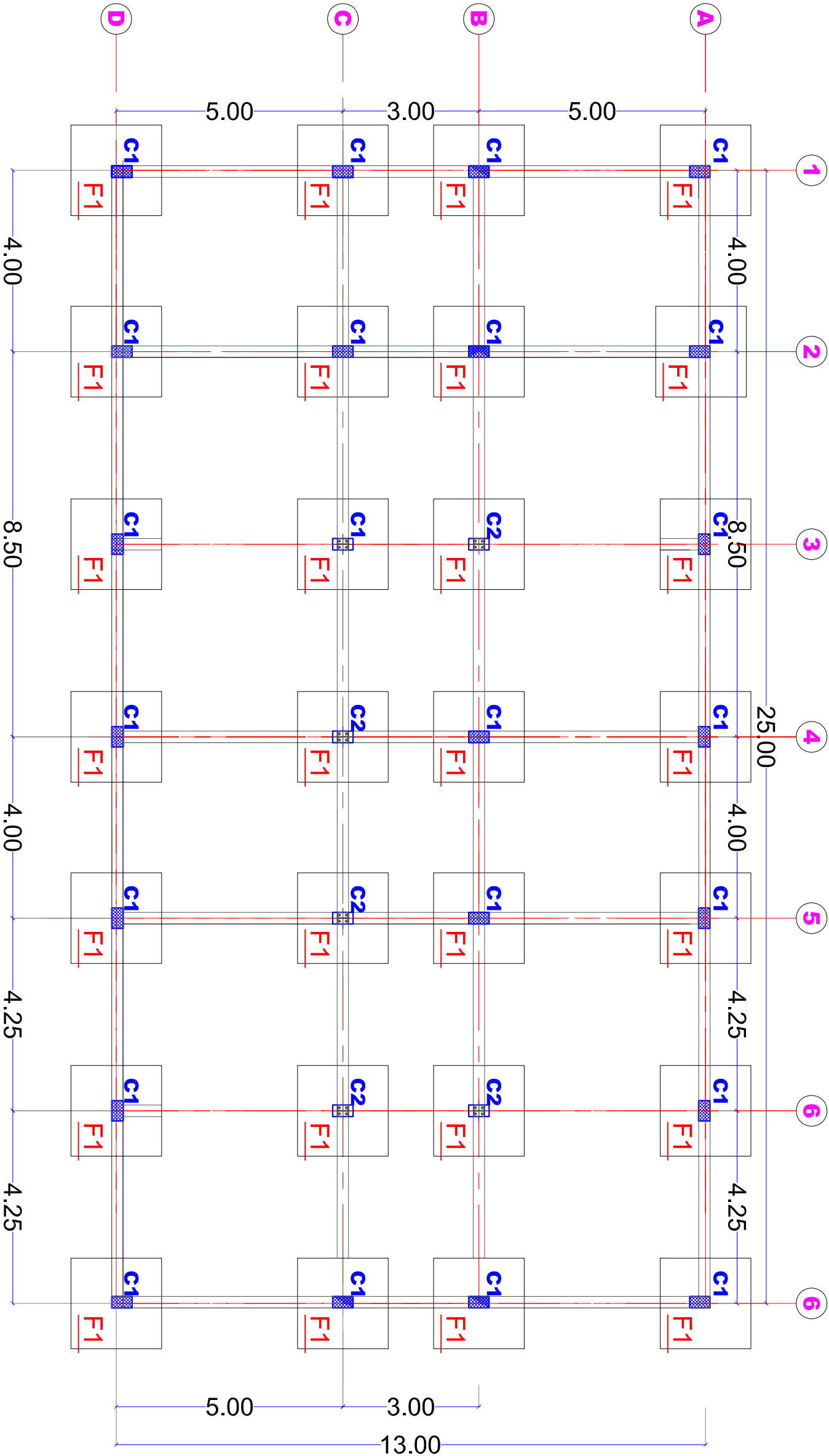


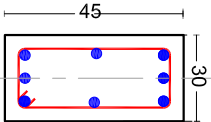
COLUMN'S SCHEDULE

TYPE	LEVEL	SIZE L (A) X W (B)	STEEL	QTY
C1	Below & Above GB	45 X 25 CM	8 YØ16 - LINKS 8MM @ 150MM	22
C2	Below GB Above GB	45 X 25 CM 30 cm Universal steel column	8 YØ16 - LINKS 8MM @ 150MM Standard steel column	6



Great Beam

Y 5 Ø16

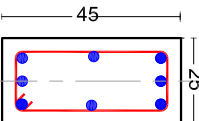


Y 3 Ø16

C1
COLUMN

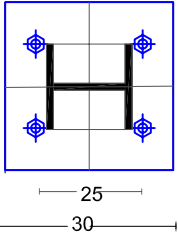
6 Y Ø 12
LINKS 1 R 8 @150

Y 5 Ø16



Y 3 Ø16

C2
COLUMN



25cm diameter steel column
30cm*30*2cm steel plate
4Q20 mm anchored bolts

PROJECT LOCATION

CENTRAL DARFUR | ZALENGEI TOWN

PROJECT NAME:

VOCATIONAL TRAINING CENTER

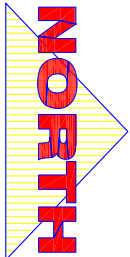
Foundation Plan

AUGUST
2016

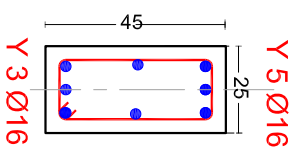
Design By:

UNDP

S1

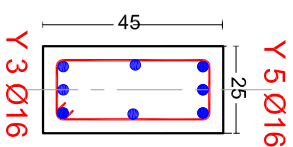


Great Beam

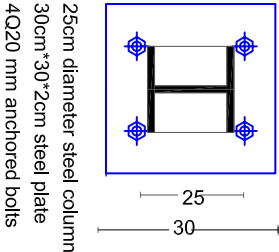


C1
COLUMN

6 Y Ø 12
LINKS 1 R 8 @150



C2
COLUMN



25cm diameter steel column
30cm*30*2cm steel plate
4Q20 mm anchored bolts

PROJECT LOCATION

CENTRAL DARFUR | ZALENGEI TOWN

PROJECT NAME:

VOCATIONAL TRAINING CENTER

STRUCTURES

Dec
2016

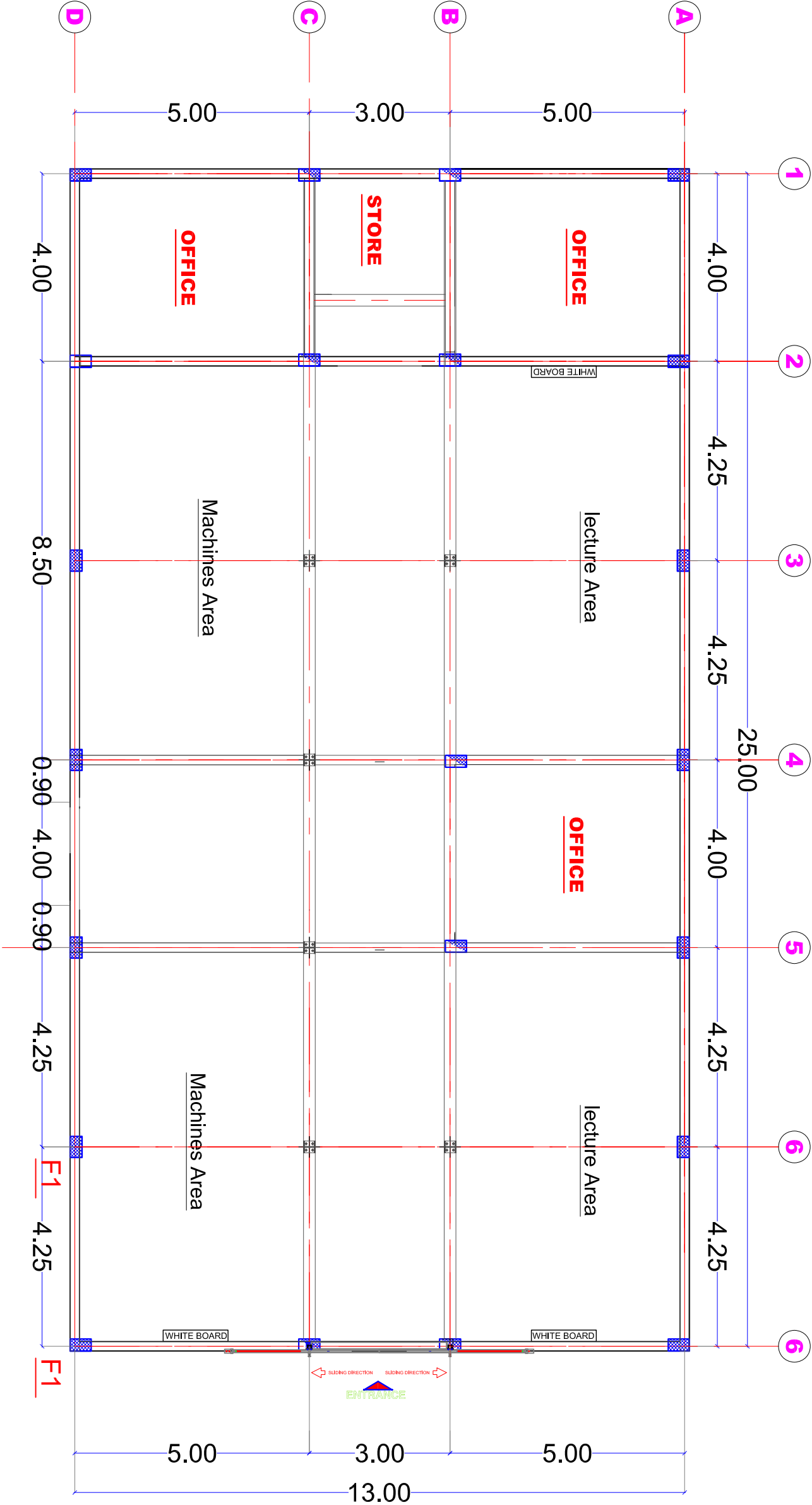
Design By:

UNDP

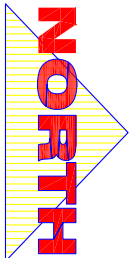
S2

COLUMN'S SCHEDULE

TYPE	LEVEL	SIZE L (A) X W (B)	STEEL	QTY
C1	Below & Above GB	45 X 25 CM	8 YØ16 - LINKS 8MM @ 150MM	24
C2	Below & Above GB	Dia 40	8 YØ16 - LINKS 8MM @ 150MM	4

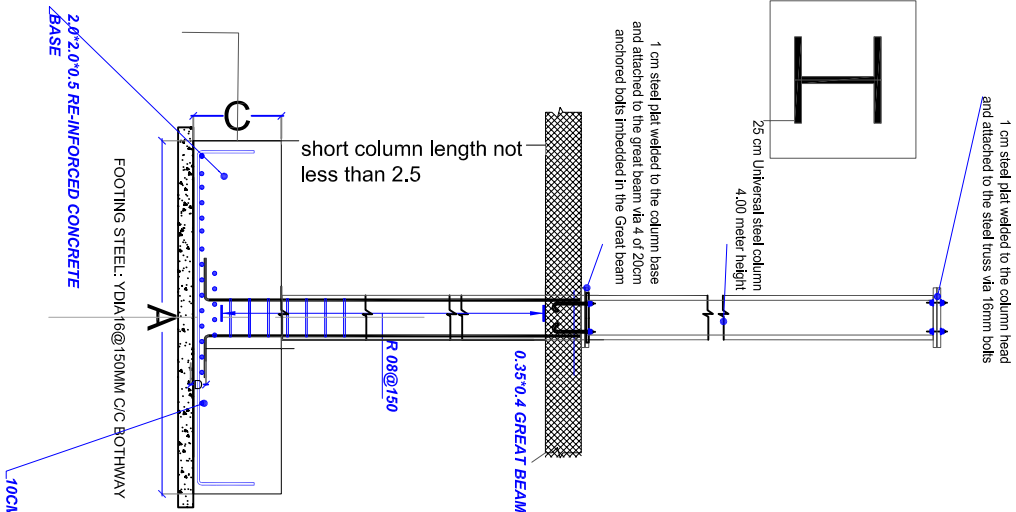


WORKSHOP
COLUMNS & TIE BEAMS LAYOUT
1:100



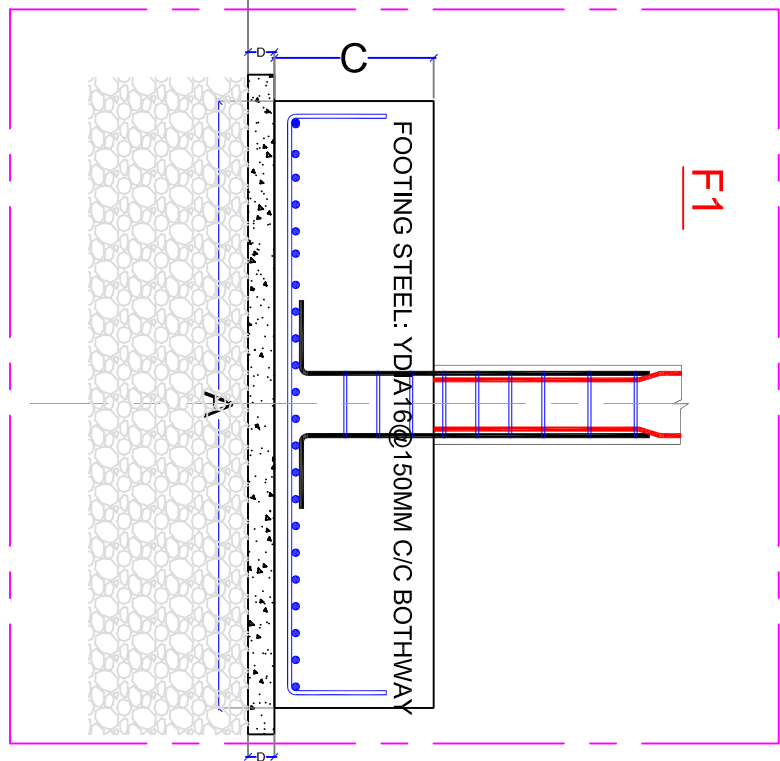
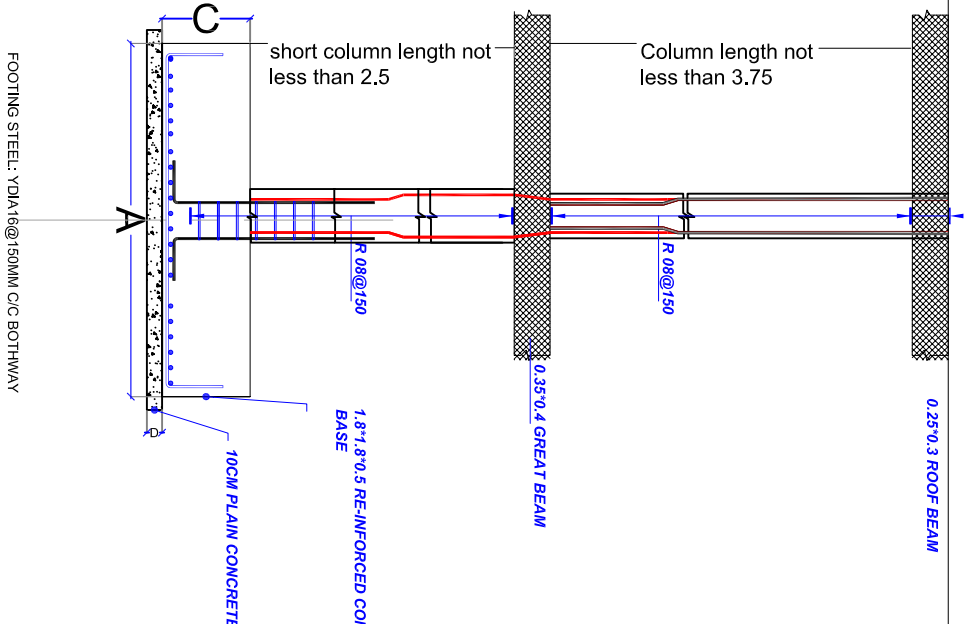
	L (A) X W (B) X DEPTH (C)	
F1	180cm X 180cm X 50 CM	Y16 @150MM C/C BOTH WAY

FOOTING'S SCHEDULE



UNDER GROUND LEVEL	ABOVE GROUND R
C1 8 T 16 Ties 3R 8 @150 cover to links 40 mm Concrete grade 30 Y 5 Ø16 Y 3 Ø16	C1 8 T 16 Ties 3R 8 @150 cover to links 40 mm Concrete grade 30 Y 5 Ø16 Y 3 Ø16

RC.COLUMNS DETAILS



GENERAL:
1- THIS DRAWINGS MUST NOT BE SCALED.
2- THIS DRAWINGS IS TO BE READ IN CONJUNCTION WITH ALL OTHER ENGINEERS, ARCHITECT AND SUB-CONTRACTOR DRAWINGS, DETAILS AND SPECIFICATION.
3- THE CONTRACTOR IS TO CHECK AND CONFIRM ALL THE DIMENSIONS AND DETAILS SHOWN ON THIS DRAWING.
4- ALL DIMENSIONS IN M, UNLESS NOTED OTHERWISE.

NOTE:
1- NOT LESS THAN 3% NIMN2 FOR 30 DAYS STRENGTH
STEEL Fy = 410 N/mm2
- Overlaps of steel should not be less than 35 times larger than bar size.
- No Overlaps of steel @ cantilevers areas.
- Concrete Cover : @ 30mm (30mm), @ 40mm (40mm)
- Max Aggregate size = 30mm.

PROJECT LOCATION

CENTRAL DARFUR | ZALENGEI TOWN

PROJECT NAME:

VOCATIONAL TRAINING CENTER

Content:

Footing Structural DETAILS

Dec
2016

Design By:

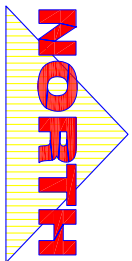
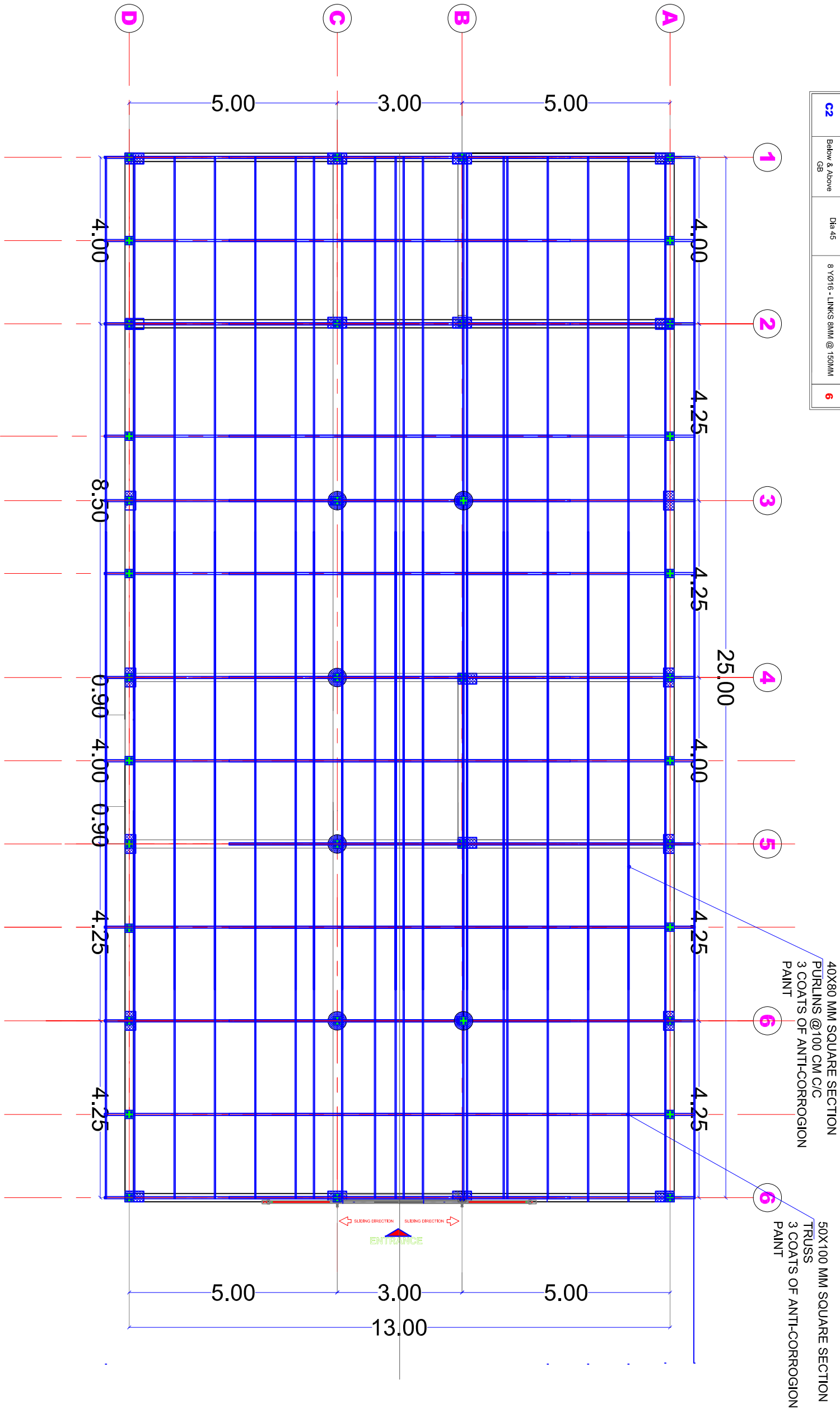
UNDP

S3

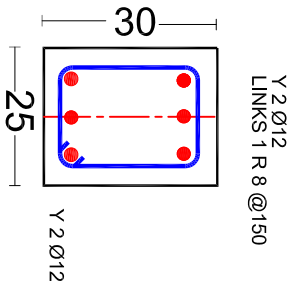
RC.COLUMNS DETAILS

COLUMNS SCHEDULE

TYPE	LEVEL	SIZE L (A) X W (B)	STEEL	QTY
C1	Below & Above GB	45 X 25 CM	8 YØ16 - LINKS 8MM @ 150MM	22
C2	Below & Above GB	Dia 45	8 YØ16 - LINKS 8MM @ 150MM	6



ROOF BEAM



PROJECT LOCATION

CENTRAL DARFUR | ZALENGEI TOWN

PROJECT NAME:

VOCATIONAL TRAINING CENTER

Content:

ROOF PLAN

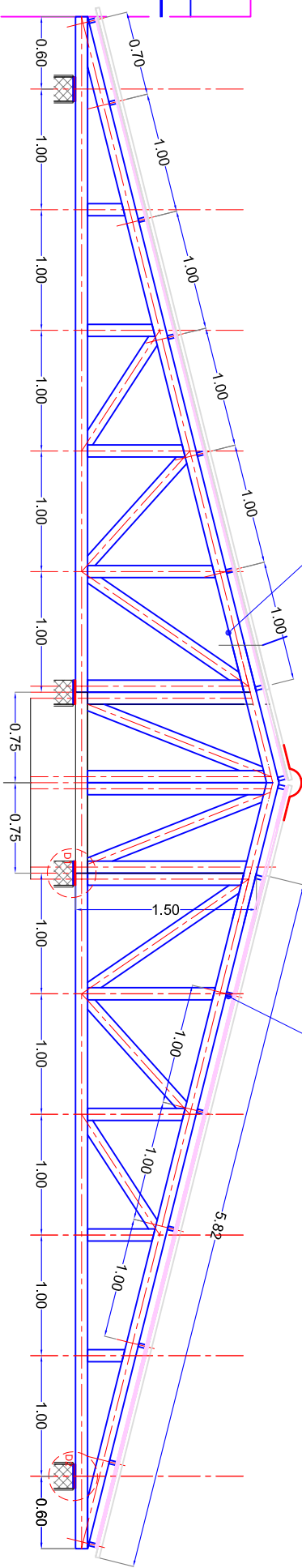
Dec
2016

Design By:

UNDP

S4

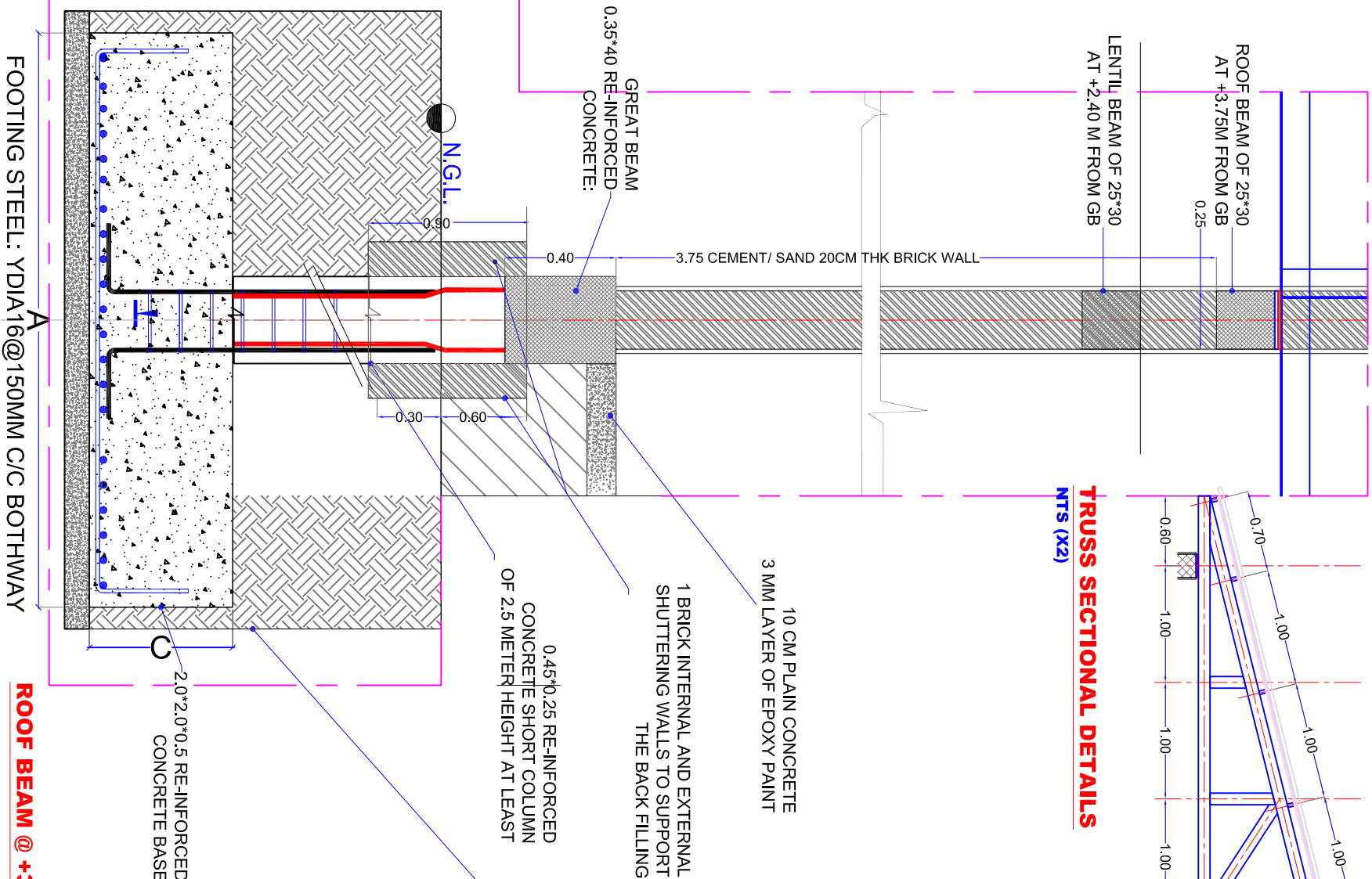
50X100 MM SQUARE SECTION
TRUSS
3 COATS OF ANTI-CORROSION
PAINT



40X80 MM SQUARE SECTION
PURLING @100CM C/C
3 COATS OF ANTI-CORROSION
PAINT

TRUSS SECTIONAL DETAILS

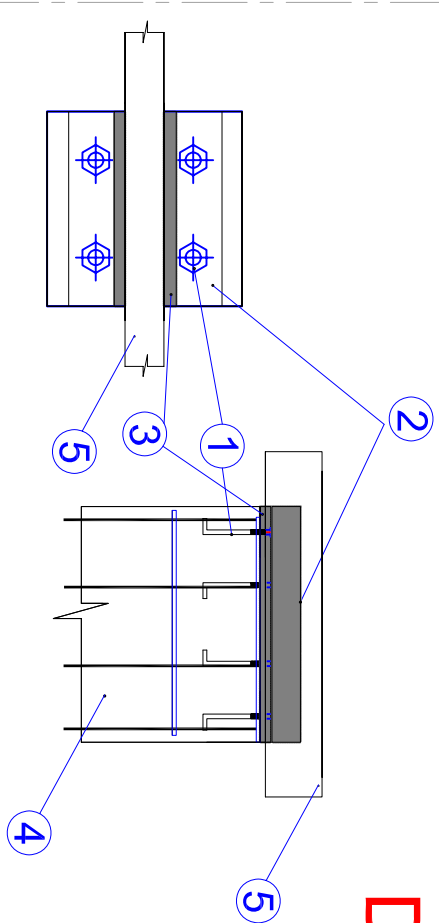
NTS (x2)



2"2 FOUNDATION TRENCH THE DEPTH IS
TO DECIDED ON SITE BUT SHOULD
NOT BE LESS THAN 2 METER

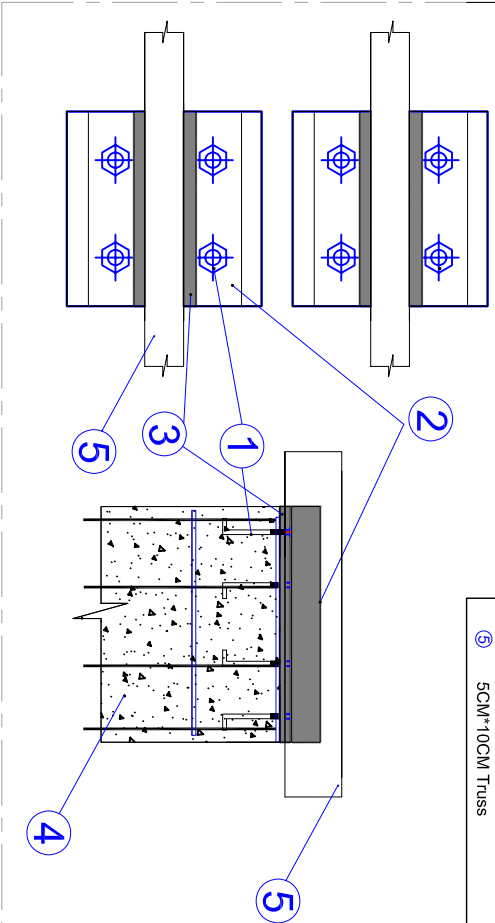
ROOF BEAM @ +3.85M FROM GB

D2



- 18mm Diameter and 15 cm long anchored imbedded in column concrete
- 5 mm steel plate 25 cm 45cm attached to the column head by anchored bolts
- 3 mm steel iron angle welded to steel truss in both sides
- Re-inforced concrete column or 25 cm Steel column
- 5CM 10CM Truss

D1



PROJECT LOCATION

CENTRAL DARFUR | ZALENGE TOWN

PROJECT NAME:

VOCATIONAL TRAINING CENTER

Content:

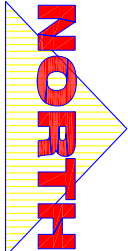
Structural DETAILS

Design By:

UNDP

SS

AUGUST
2016



FINISHING SCHEDULE	
CEILING FINISHES	
1	US ZINC SHEET (0.45MM)
2	ROCK /GLASS WOOL
3	FALSE CEILING-OFFICES
4	STEEL FRAME
WALL FINISHES	
1	G/S PLASTER
2	3 COATS OF POMASTIC
3	2 COATS OF PAINT
SKIRTING	
1	EPOXY FINISH H. 25CM
FLOOR FINISHES	
1	PLAIN CONCRETE
2	EPOXY FINISH
3	FAIR FACE CEMENT/
3	SAND FINISH ON PC



ELECTRICAL KEY	
S	Description
⬤	WALL MOUNTED KDK FAN
⌋	SOCKET OUTLET
⌋	HEAVY DUTY FOR WORKSHOP
⌋	WALL MOUNTED LAMP
⌋	DOUBLE ONE WAY SWITCH

PROJECT LOCATION
CENTRAL DARFUR | ZALENGEI TOWN

PROJECT NAME:
VOCATIONAL TRAINING CENTER

Electrical Works
Jan 2017

Design By:
UNDP
A11

