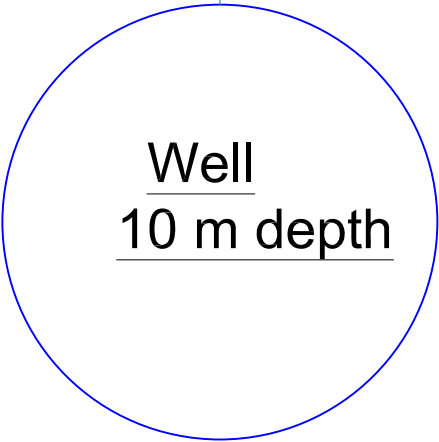


SYMBOL	DESCRIPTION
	Ø 1/2" BBR PIPE FOR FRESH WATER
	Ø 4" UPVC SOIL WATER PIPE
	Ø 2" UPVC WAIST WATER PIPE
	COLD WATER VALVE
	PIPA

S	Description
	EXHAUST FAN
	2 ft SINGLE FLOURECENT LAMP
	4 ft SINGLE FLOURECENT LAMP

ELECTRICAL SYMBOL KEY:



FINISHING SCHEDULE	
CEILING FINISHES	
1	US ZINC SHEET (0.5MM)
2	OIL PAINT
3	FABRIC TEXTILE SHEETS
WALL FINISHES	
1	CERAMIC TILES
2	MARBLE TILES
3	3 COATS OF POMASTIC ON OS PLASTER
4	ROUGH PLASTER
SKIRTING	
1	EPOXY FINISH H. 25CM
2	CERAMIC TILES
3	MARBLE TILES
4	GRANITE TILES
FLOOR FINISHES	
1	EPOXY FINISH
2	CERAMIC TILES
3	FAIR FACE CEMENT/ SAND FINISH ON PC

CEILING FINISHES C W WALL FINISHES F S SKIRTING



S	Description
	WALL MOUNTED KOK FAN
	SOCKET OUTLET
	WALL MOUNTED LAMP
	DOUBLE ONE WAY SWITCH

ELECTRICAL KEY

PROJECT LOCATION

CENTRAL DARFUR

Project Title:  
ZAIINGI VOCATIONAL  
TRAINING CENTER

Content :

Latrine Drawings

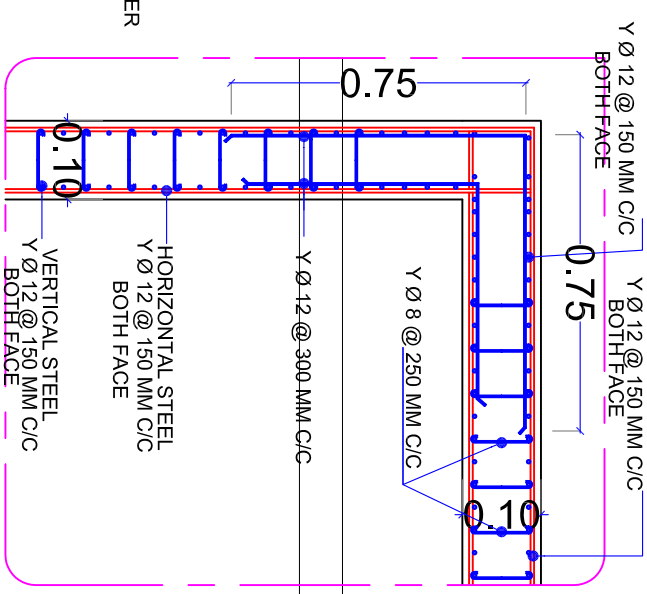
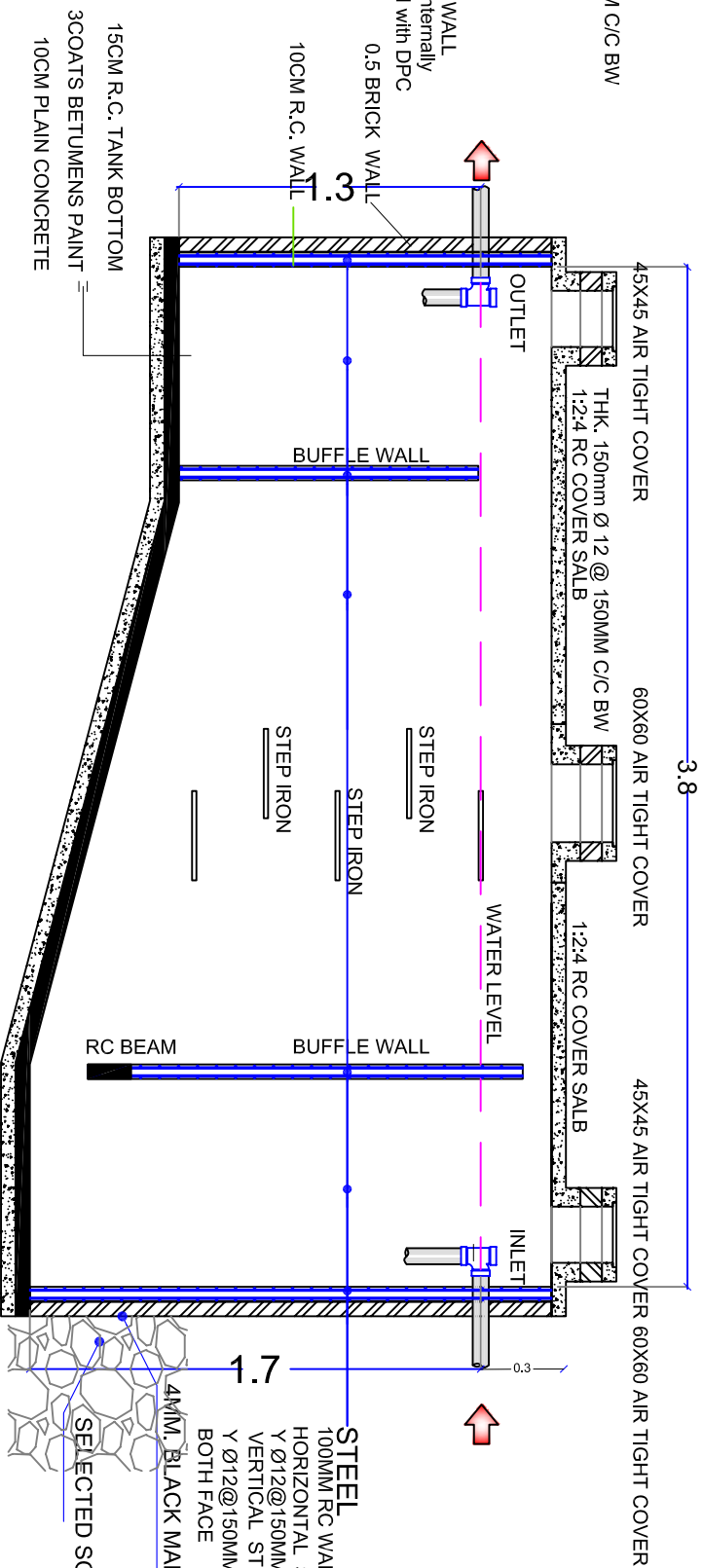
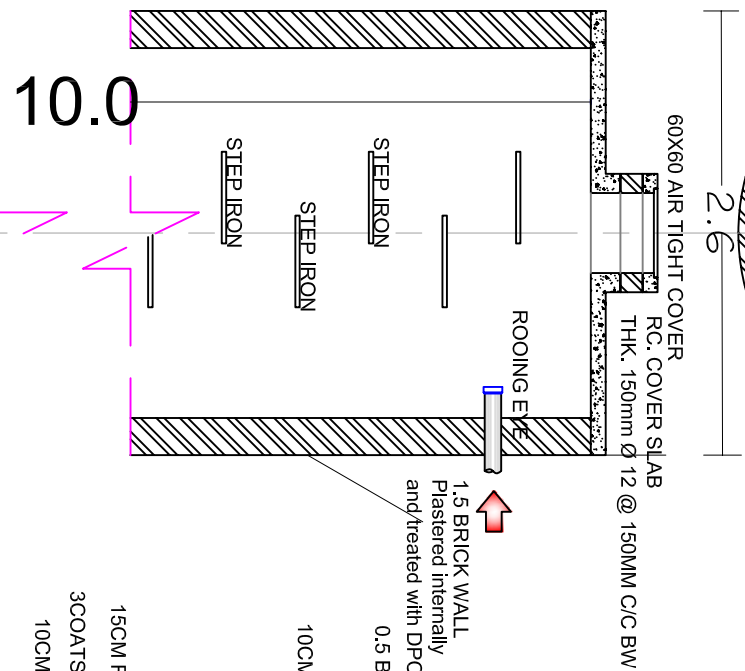
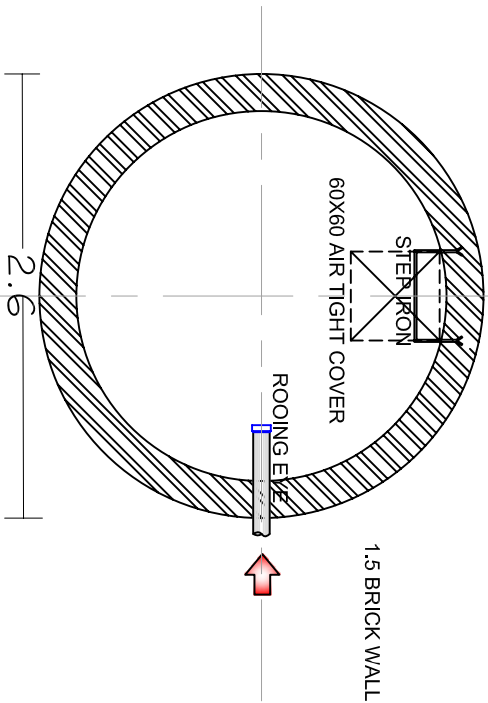
Design By:

UNDP

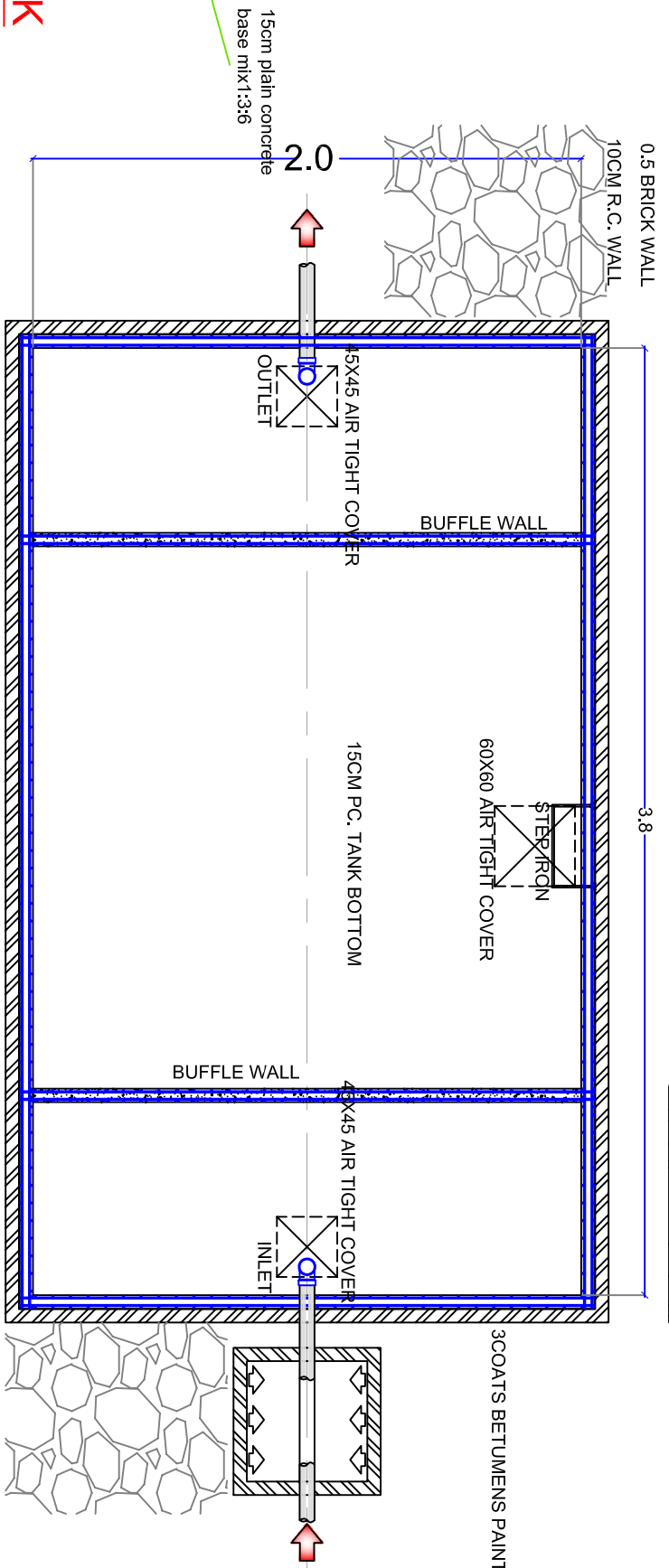
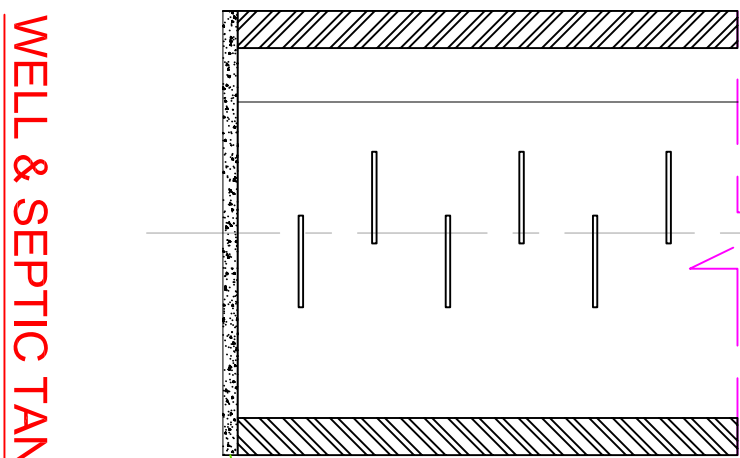
L1

Jan  
2017





## STRUCTURAL R.C. Walls @ Corners



## WELL & SEPTIC TANK

NOTE:  
FOU = NOT LESS THAN 25 Nimro FOR 28 DAYS STRENGTH  
STEEL Fy = 410 N/mm<sup>2</sup>  
- Overlaps of steel should not be less than 45 times  
larger than bar size.  
- No Overlaps of steel @ cantilevers areas.  
- Max. Aggr. size = 25mm, @ footing = 30mm.  
- Max. Aggr. size = 20mm.

### PROJECT LOCATION

CENTRAL DARFUR | ZALENGEI TOWN

### Project Title:

ZALINGI VOCATIONAL  
TRAINING CENTER

### Content :

Septic Tank & Well Drawings

### Design By :

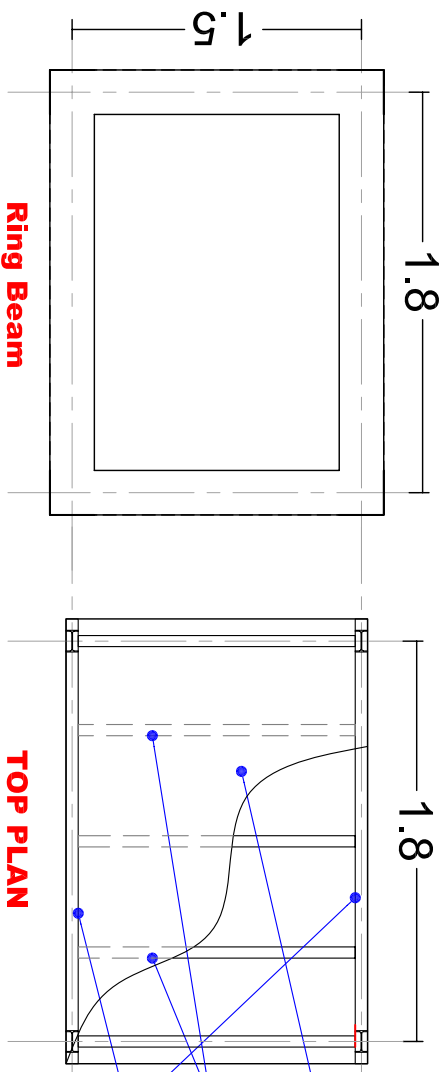
UNDP

JAN  
2017

### Drawn By:

UNDP

L3



Ring Beam

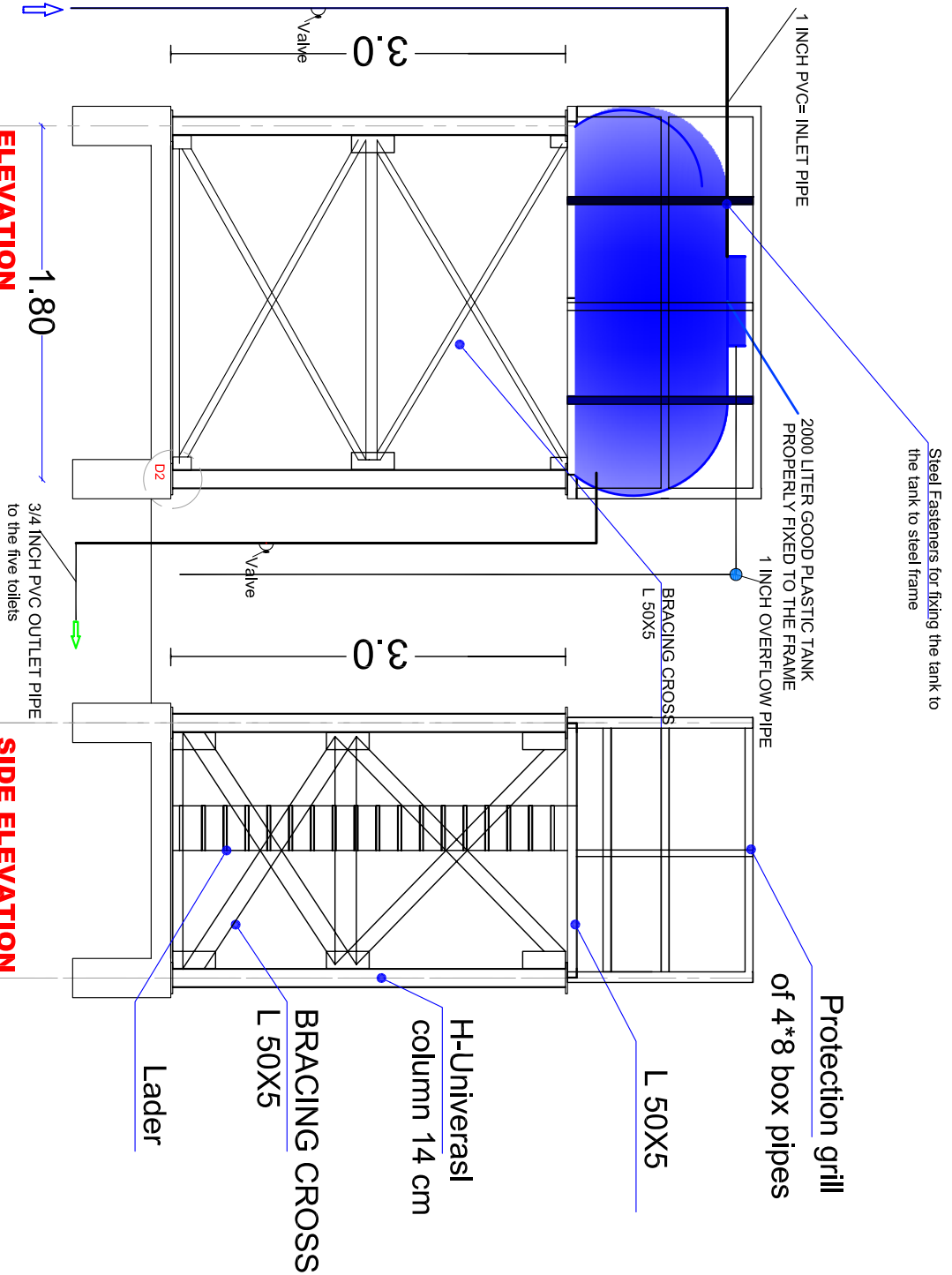
TOP PLAN

RC. COLUMN : C1

SIZE : 0.20 X 0.20 M  
STEEL : Y 4 Ø12 MM.  
LINK : 1 X 8MM @ 200MM.

RC. COLUMN : C1

SIZE : 0.20 X 0.20 M  
STEEL : Y 4 Ø12 MM.  
LINK : 1 X 8MM @ 200MM.



ELEVATION

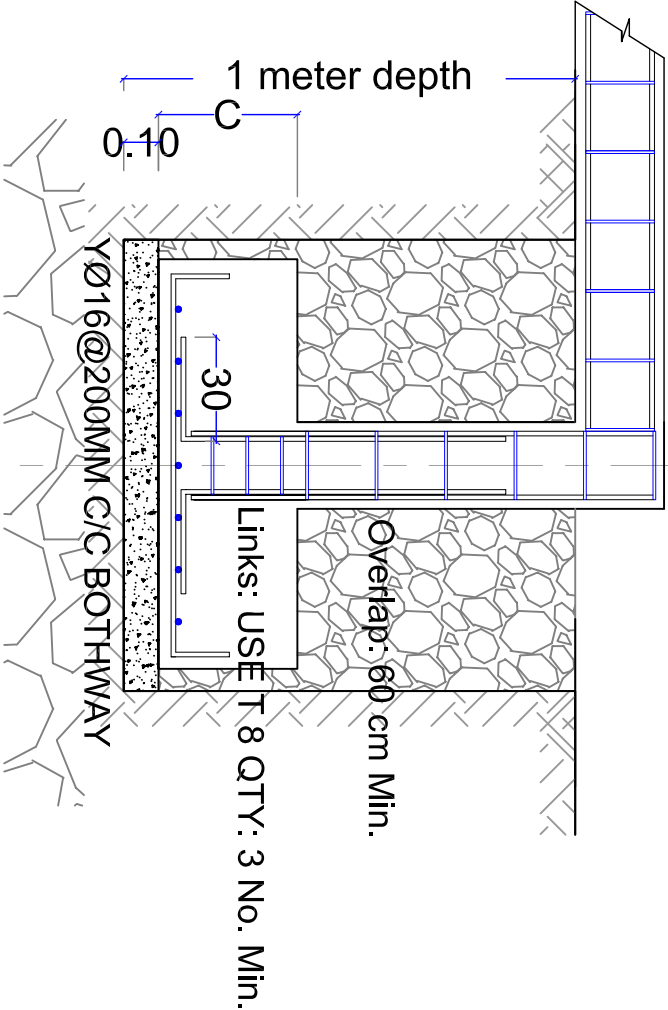
SIDE ELEVATION

## Water Tank Tower

- 14 cm H-section universal column painted with anti rust paints
- 12mm Diameter and 15 cm long anchored imbedded in beam concrete
- 5 mm steel plate 10 cm\*10cm welded to the posts
- Re-inforced concrete beam

FOOTING'S SCHEDULE		
TYPE	FOOTING SIZE L (A) X W (B) X DEPTH (C)	QTY
F1	80 X 80 X 30 CM	4

All steel tower steel members shall be painted with antirust paints



### NOTE:

- Fcu. = 25 N/mm2, 28 DAYS
- Fy = 460 N/mm2
- Fy = 460 N/mm2
- Overlaps = 50 Bar size
- No Overlaps of steel @ cantilevers areas.
- Concrete Cover : @ Slab=25mm, @ Columns=30mm.
- Concrete Cover : @ Foundations =50mm,
- Max Aggregate Size = 20mm.

GENERAL:  
1- THIS DRAWINGS MUST NOT BE SCALED.  
2- THIS DRAWINGS IS TO BE READ IN CONJUNCTION WITH  
ALL OTHER ENGINEERS ARCHITECT AND SUB-CONTRACTOR DRAWINGS, DETAILS AND SPECIFICATION.  
3-THE CONTRACTOR IS TO CHECK AND CONFIRM ALL THE DIMENTIONS AND DETAILS SHOWN ON THIS DRAWING.  
4-ALL DIMENSIONS IN M. UNLESS NOTED OTHERWISE.

PROJECT LOCATION

CENTRAL DARFUR | ZALENGE TOWN

Project Title:

ZALING VOCATIONAL  
T RAINING CENTER

Content :

Elevated Water Tank

Design By :

UNDP

Jan  
2017

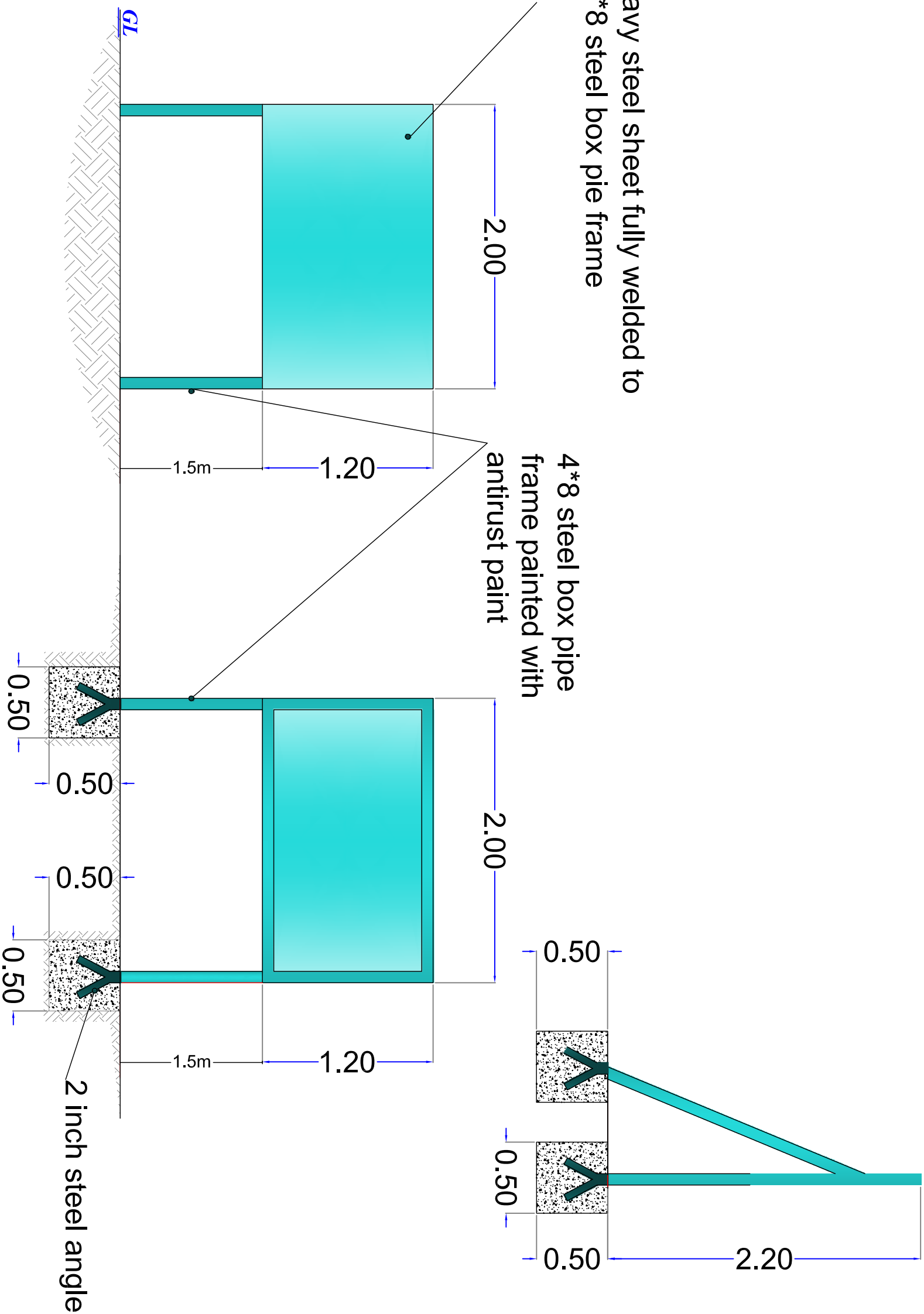
Drawn By:

UNDP

L4

Heavy steel sheet fully welded to  
4\*8 steel box pie frame

4\*8 steel box pipe  
frame painted with  
antirust paint



*Front Side Elevation View*

*Back Side Elevation View*

Plan concrete

GENERAL:

- 1- All steel members shall be are of good quality heavy steel (Black type).
- 2- all steel remenbers shall be painted with antirust paints and final coats
- 3-the plain concrete is of 1:3:6 mix and shall be treated properly with water
- 4-All dimnensions are in meter unless otherwise stated

Note:

The contractor shall obtain the logos needed to be drawn as well as what is needed to be written on the signboard from UNDP&DDRC

Project Name:

Zalingi Vocational Training Centre

Content:

Sign Board Details

Designed by:

UNDP-DDR

Drawn By:

UNDP-DDR

2017

L5