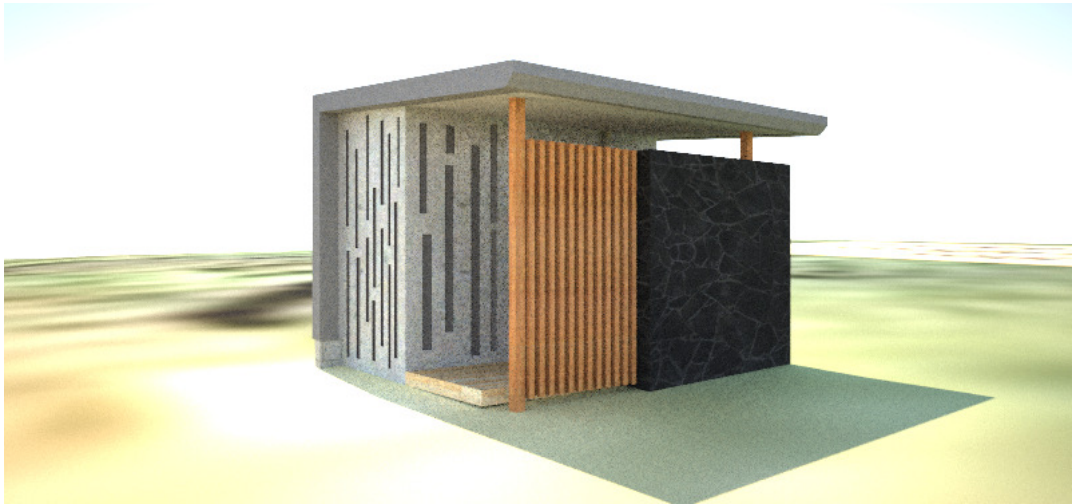


TAGA BLOWHOLES PROPOSED TOILET BLOCK & VIEWING PLATFORM

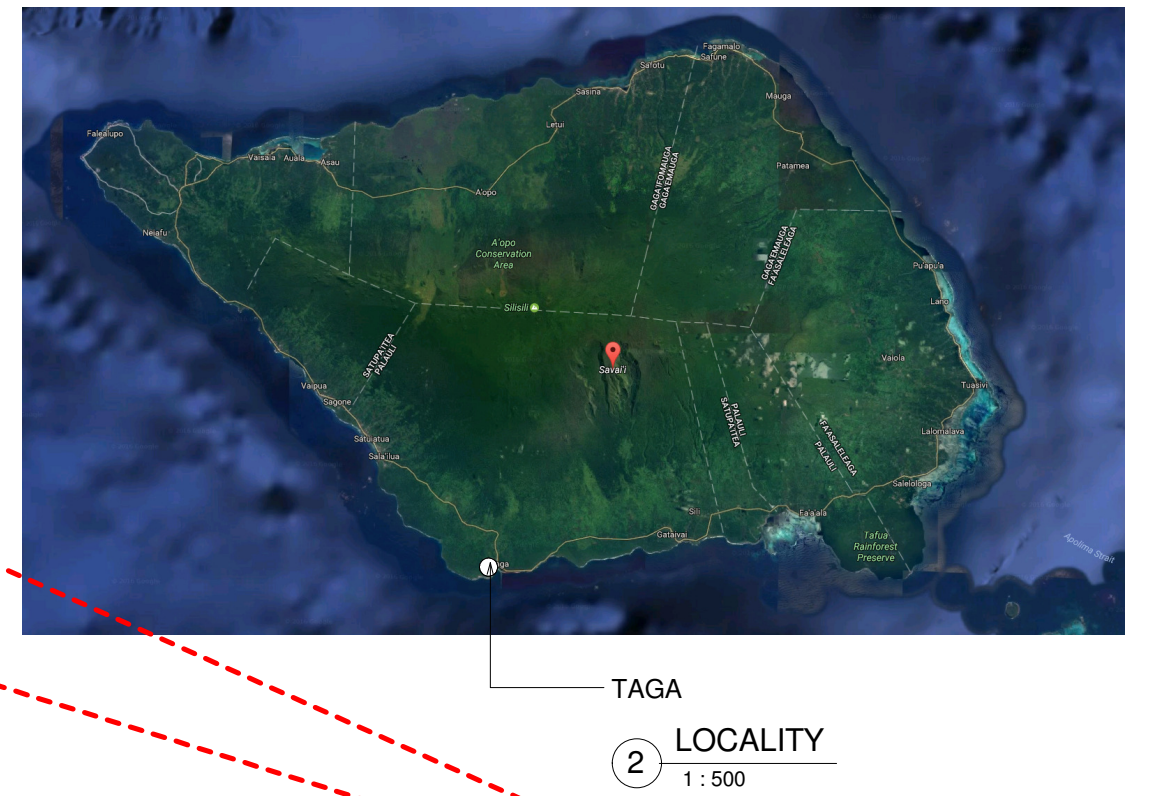
GEF CLIMATE RESILIENCE PROJECT
TAGA, SAVAI'I, SAMOA

Sheet List	
Sheet Number	Sheet Name
A000	COVER SHEET
A002	VIEWING PLATFORM
A100	FOUNDATION - TOILET BLOCK
A102	FLOOR - TOILET BLOCK
A103	ROOF PLANS - TOILET BLOCK
A200	ELEVATIONS - TOILET BLOCK
A300	SECTIONS - TOILET BLOCK
A401	CONSTRUCTION DETAILS - TOILET BLOCK
A501	DOOR & WINDOW SCHEDULE - TOILET BLOCK
A502	BATHROOM DETAILS - TOILET BLOCK
A503	INTERNAL ELEVATIONS - TOILET BLOCK
H101	HYDRAULIC DESIGN - TOILET BLOCK
H102	SEPTIC TANK PLANS
H103	SEPTIC TANK SECTIONS & DETAILS



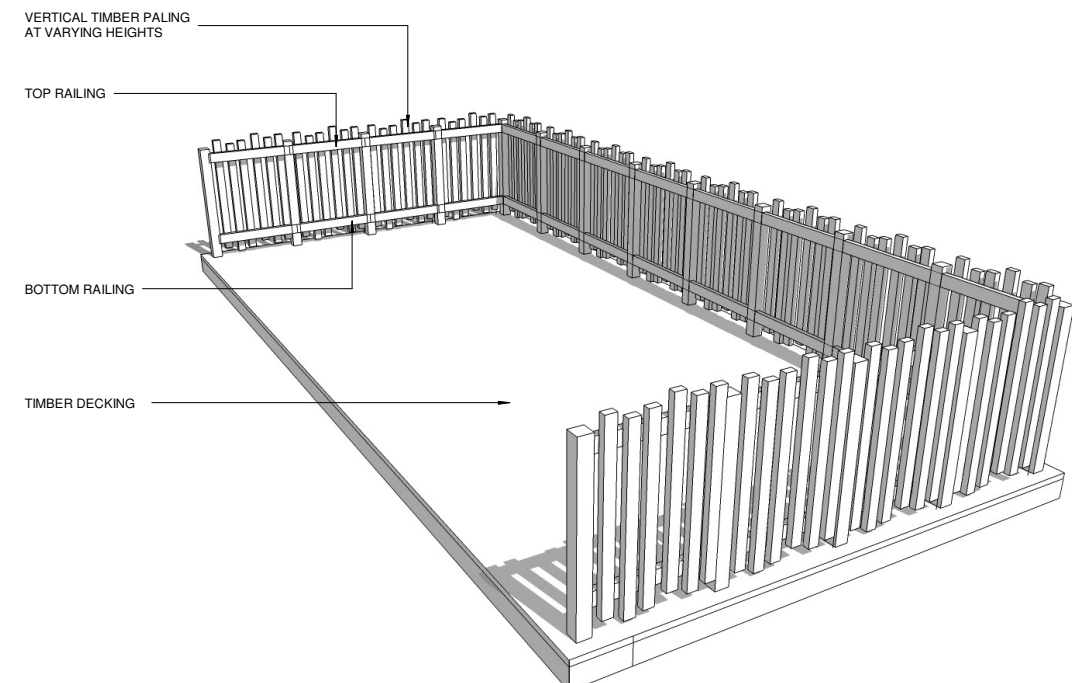
FOR TENDER

REVISIONS	REV	DATE	DESCRIPTION	DWN	ENG	CHK	CLIENT SAMOA TOURISM AUTHORITY	Kramer Ausenco PROFESSIONAL PROJECT MANAGERS ENGINEERS - SURVEYORS - ARCHITECTS First Floor, Maxkar House Cnr Convent Street and Saleufi Rd, Saleufi P.O. Box 593, Apia, SAMOA Phone: (685) 30353 Fax: (685) 30355 Email: apia@kramerausenco.com Web: www.kramerausenco.com	QUALITY		GEF TOURISM CLIMATE RESILIENCE PROJECT		PROJECT No.	SCALE:
														16290W
													DRAWING No. A000	REVISION
1/2/2017						KHL								
1/2/2017				AG	LW	CSch								



FOR TENDER

REVISIONS	REV	DATE	DESCRIPTION	DWN	ENG	CHK	<div>CLIENT</div> <div>SAMOA TOURISM AUTHORITY</div> <div><div><div><div></div><div>Kramer Ausenco</div><div>PROFESSIONAL PROJECT MANAGERS</div><div>ENGINEERS - SURVEYORS - ARCHITECTS</div></div><div>First Floor, Maxkar House Cnr Convent Street and Saleufi Rd, Saleufi P.O. Box 593, Apia, SAMOA</div><div>Phone: (685) 30353 Fax: (685) 30355</div><div>Email: apia@kramerausenco.com</div><div>Web: www.kramerausenco.com</div></div></div>	<div>QUALITY</div> <div><div>DRAWN:</div><div>DRAWING CHECKED:</div><div>ENGINEER:</div><div>DESIGN CHECKED:</div></div> <div><div>DATE:</div><div>DATE:</div><div>DATE:</div><div>DATE:</div></div>		<div>GEF TOURISM CLIMATE RESILIENCE PROJECT</div>		<div>PROJECT No.</div> <div>16290W</div>	<div>SCALE:</div> <div>AS NOTED</div> <div>FULL SIZE A1</div>
	<div>PROJECT DESCRIPTION</div> <div>PROPOSED TOILET BLOCK & VIEWING PLATFORM, TAGA, SAVAI'I</div>		<div>DRAWING TITLE</div> <div>PROPOSED SITE</div>	<div>DRAWING No.</div> <div>A001</div>	<div>REVISION</div>								
					AG								



90X45 H3.2 TIMBER TOP RAIL
FIX WITH 4-100X3.75 NAILS TO
POSTS

90X90 H4 TIMBER POSTS @
1000MM MAX CRS. FIX WITH
2-M12 STAINLESS STEEL
BOLTS WITH 50MM
WASHERS

VERTICAL TIMBER TO VARYING
HEIGHTS. FIX WITH 3/60 X 3.15
NAILS TO RAILS

90X45 H3.2 TIMBER BOTTOM RAIL
FIX WITH 4-100X3.75 NAILS TO
POSTS

TIMBER DECKING

140X45 H3.2 TIMBER JOISTS

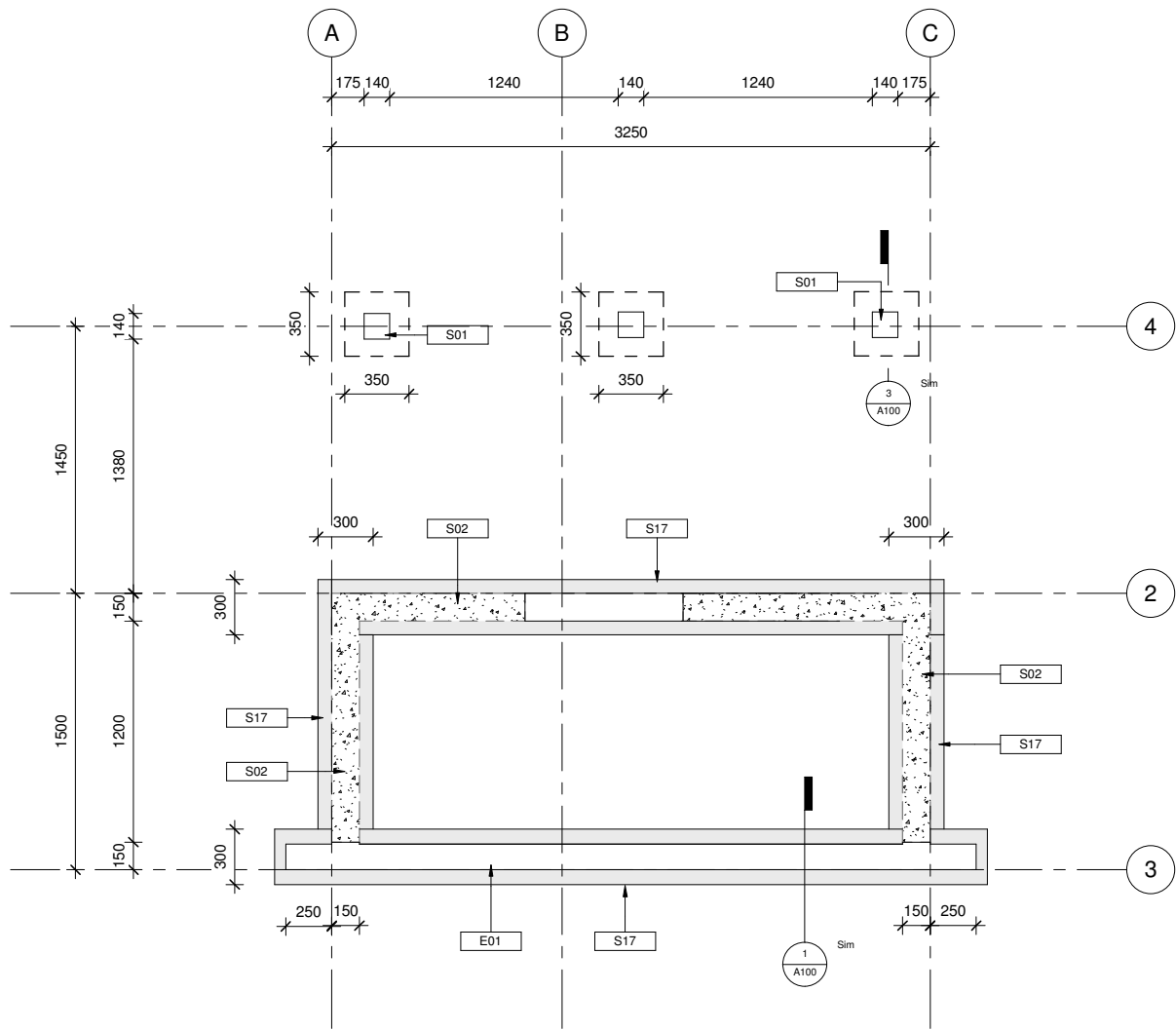
BOUNDARY JOISTS

1100



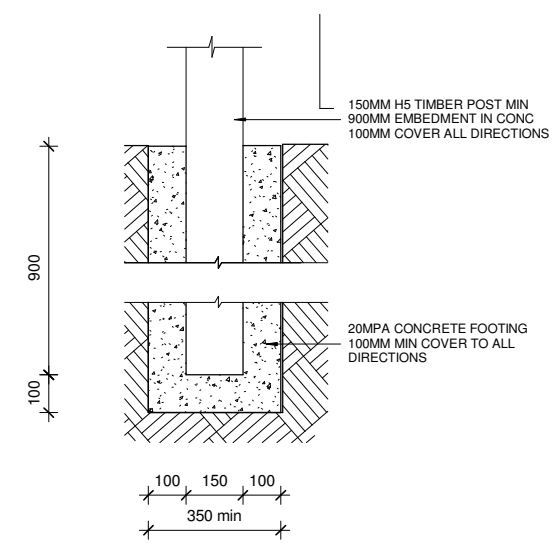
FOR TENDER

REVISIONS	REV	DATE	DESCRIPTION	DWN	ENG	CHK	CLIENT SAMOA TOURISM AUTHORITY	Kramer Ausenco PROFESSIONAL PROJECT MANAGERS ENGINEERS - SURVEYORS - ARCHITECTS First Floor, Maxkar House Cnr Convent Street and Saleufi Rd, Saleufi P.O. Box 593, Apia, SAMOA Phone: (685) 30353 Fax: (685) 30355 Email: apia@kramerausenco.com Web: www.kramerausenco.com	QUALITY		GEF TOURISM CLIMATE RESILIENCE PROJECT		PROJECT No.	SCALE:	
															16290W

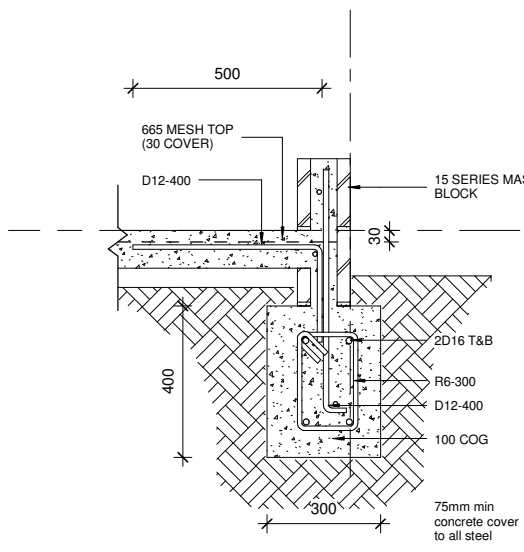


2 FOUNDATION PLAN
1 : 20

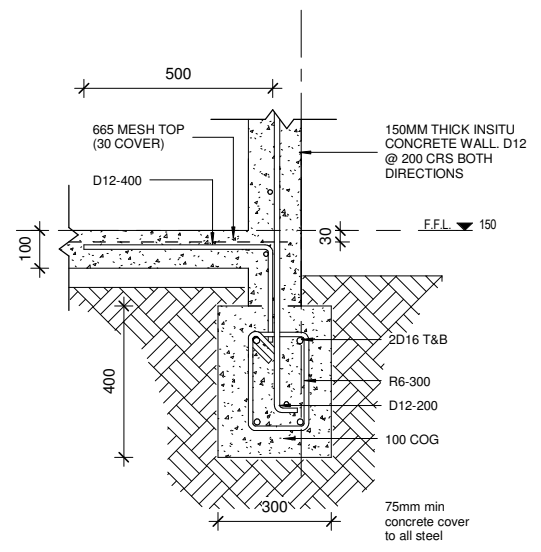
NOTES	
Key Value	Keynote Text
E01	15 SERIES MASONRY BLOCK FOUNDATION WALL D12 @ 400 CRS VERTICAL, D12 @ 600 CRS HORIZONTAL. PAINTED.
S01	150MM DIAMETER MIN TIMBER POSTS (POUMULI OR H5 TREATED) 900MM MIN EMBEDMENT IN CONCRETE, 100MM COVER ALL DIRECTIONS. POLYURETHANE FINISH. NO CARVINGS PERMITTED.
S02	150MM THICK REINFORCED INSITU CONCRETE WALL. D12 @ 200CRS BOTH DIRECTIONS. 'MUSHROOM' COLOURED OXIDE TO CONCRETE MIX. SEAL WITH PETER FELL CLEAR SEALER.
S17	400X300 CONCRETE FOOTING. 2-D16 TOP AND BOTTOM. R6 STIRRUPS @ 300 CRS. 75MM MIN COVER TO REBAR.



3 TYPICAL POST FOOTING
1 : 10



1 MASONRY WALL FOOTING
1 : 10



4 CONCRETE WALL FOOTING
1 : 10

FOR TENDER

REVISIONS	REV	DATE	DESCRIPTION	DWN	ENG	CHK	CLIENT SAMOA TOURISM AUTHORITY	<div>Kramer Ausenco PROFESSIONAL PROJECT MANAGERS ENGINEERS - SURVEYORS - ARCHITECTS</div> <div>First Floor, Maxkar House Cnr Convent Street and Saleufi Rd, Saleufi P.O. Box 593, Apia, SAMOA Phone: (685) 30353 Fax: (685) 30355 Email: apia@kramerausenco.com Web: www.kramerausenco.com</div>	QUALITY		GEF TOURISM CLIMATE RESILIENCE PROJECT		PROJECT No.	SCALE:		
															16290W	AS NOTED FULL SIZE A1
												DRAWING No.	REVISION			
												A100				



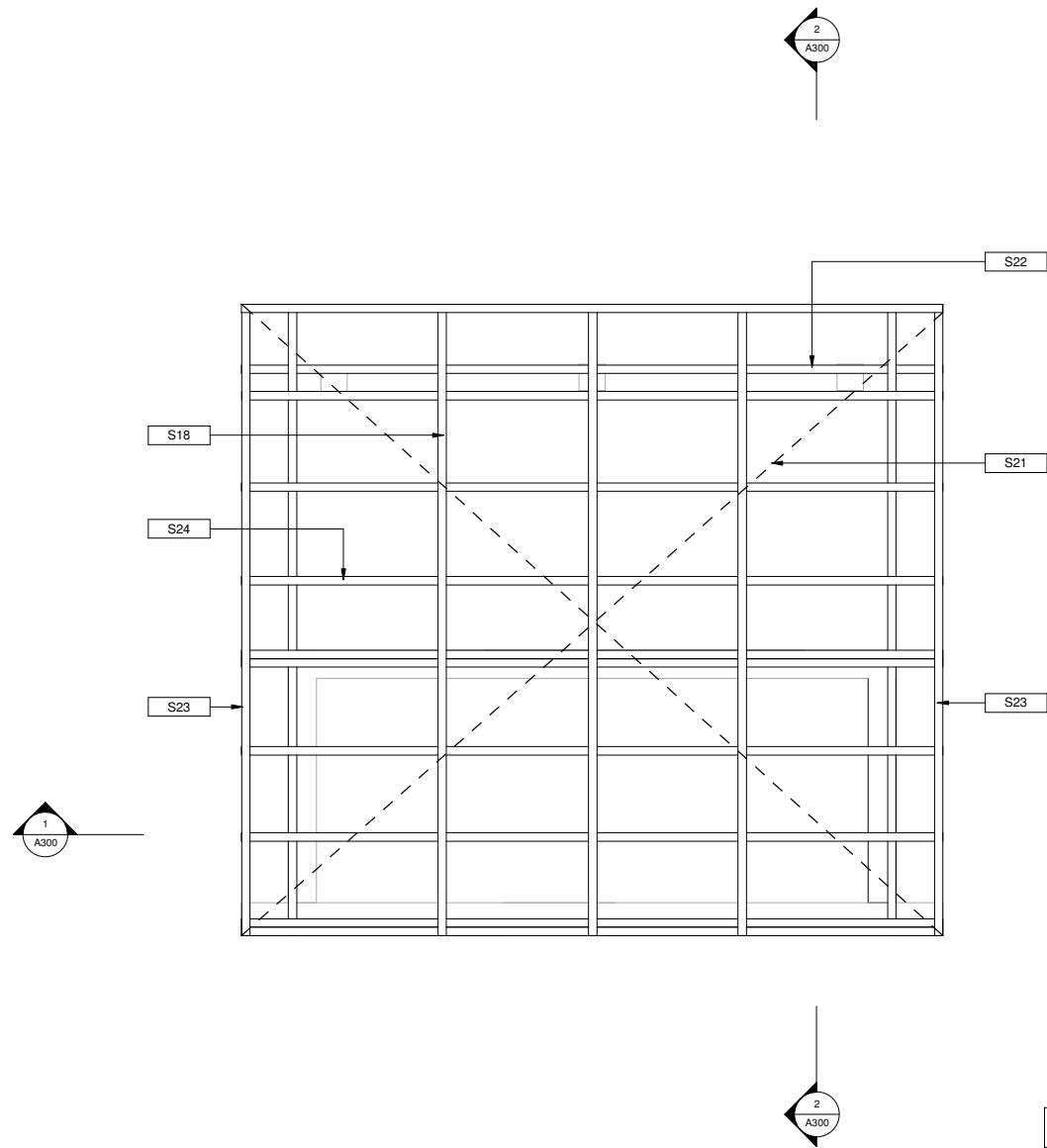
NOTES	
Key Value	Keynote Text
E04	9MM FIBRE CEMENT CEILING/ SOFFIT LINING. SCREW FIXED TO TIMBER FRAMING. PAINT FINISH. BEVEL EDGES.
E05	COLORBOND TRIMDECK PROFILE CLADDING ON BUILDING WRAP ON 140X45 H3.2 TIMBER STUDS @ 600MM MAX CRS, NOGS @ 800CRS.SURFMIST COLOUR.
E06	2100MM HIGH X 600MM THICK GABION BASKET ROCK WALL.
E09	150X50H3.2 TIMBER SLATTED SHADES. CABBOTS KWILA STAIN FINISH.
F01	PREMIUM GRADE RADIATA TIMBER DECKING, GROOVED SIDE DOWN ON TIMBER FLOOR JOISTS @ 450MM MAX CRS. CLEAR OIL STAIN FINISH.



NOTES	
Key Value	Keynote Text
F09	100MM THICK CONCRETE FLOOR SLAB. SMOOTH TROWEL FINISH. APPLY PETER FELL BLACK OXIDE TO CONCRETE MIX AND CLEAR SEAL WITH PETER FELL SATIN CONCRETE SEALER.
R02	CUSTOM COLORBOND GUTTER.
R03	COLORBOND BARGE FLASHING, TO MATCH ROOF SHEETING.
S01	150MM DIAMETER MIN TIMBER POSTS (POUMULI OR HS TREATED) 900MM MIN EMBEDMENT IN CONCRETE, 100MM COVER ALL DIRECTIONS. POLYURETHANE FINISH. NO CARVINGS PERMITTED.
S02	150MM THICK REINFORCED INSITU CONCRETE WALL. D12 @ 200CS BOTH DIRECTIONS. 'MUSHROOM' COLOURED OXIDE TO CONCRETE MIX. SEAL WITH PETER FELL CLEAR SEALER.

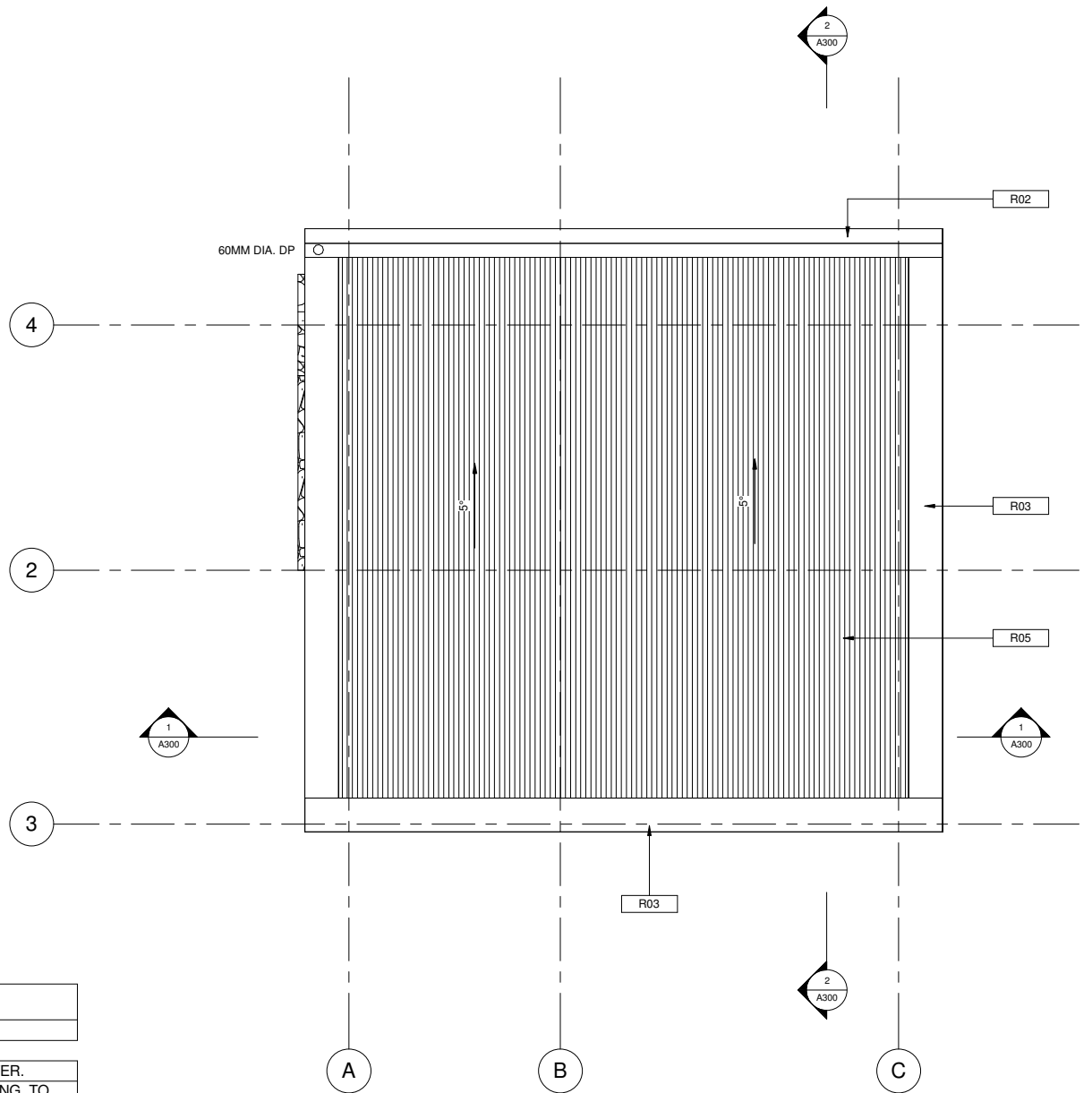
FOR TENDER

[illegible]



2 ROOF FRAMING PLAN
1 : 20

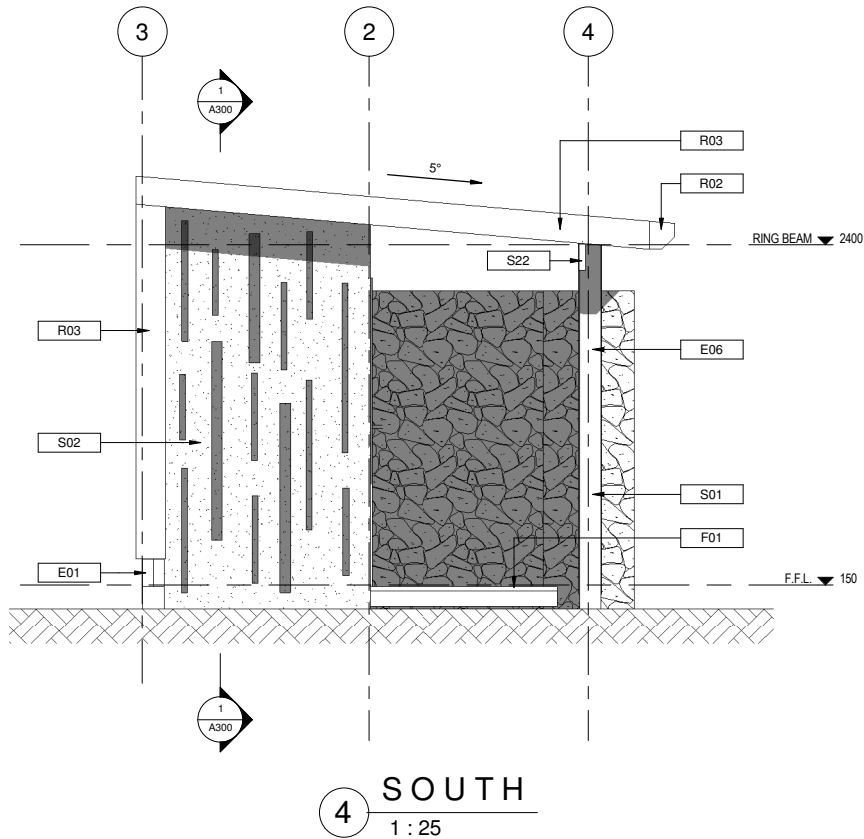
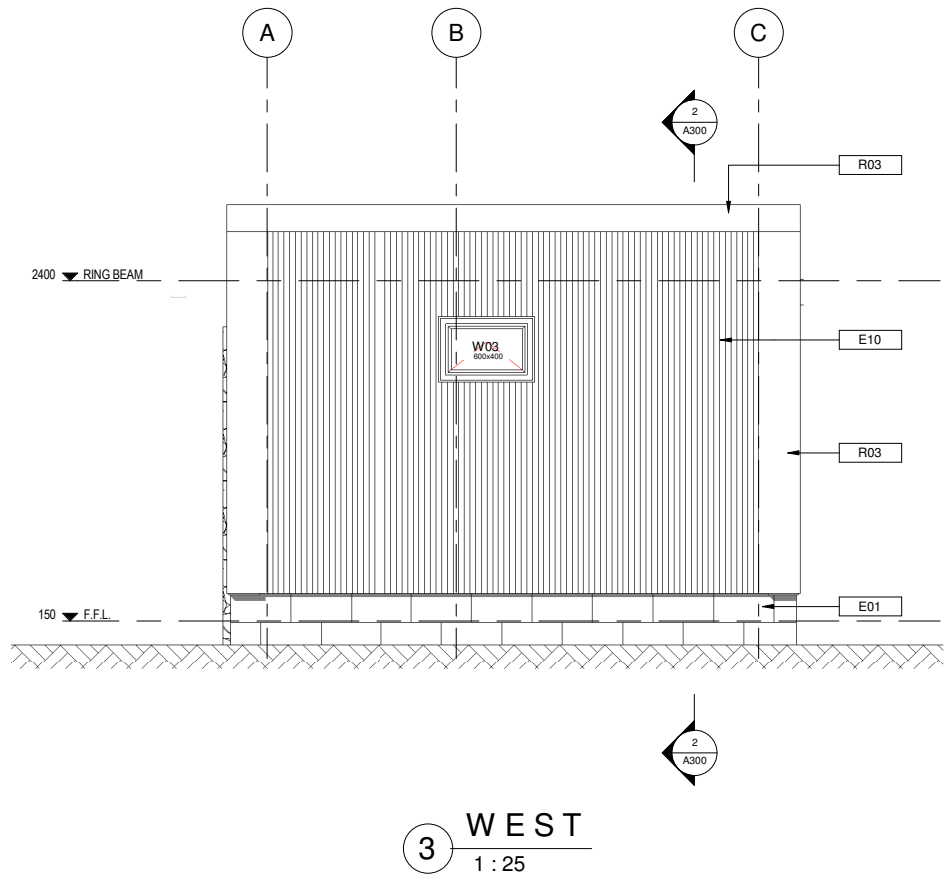
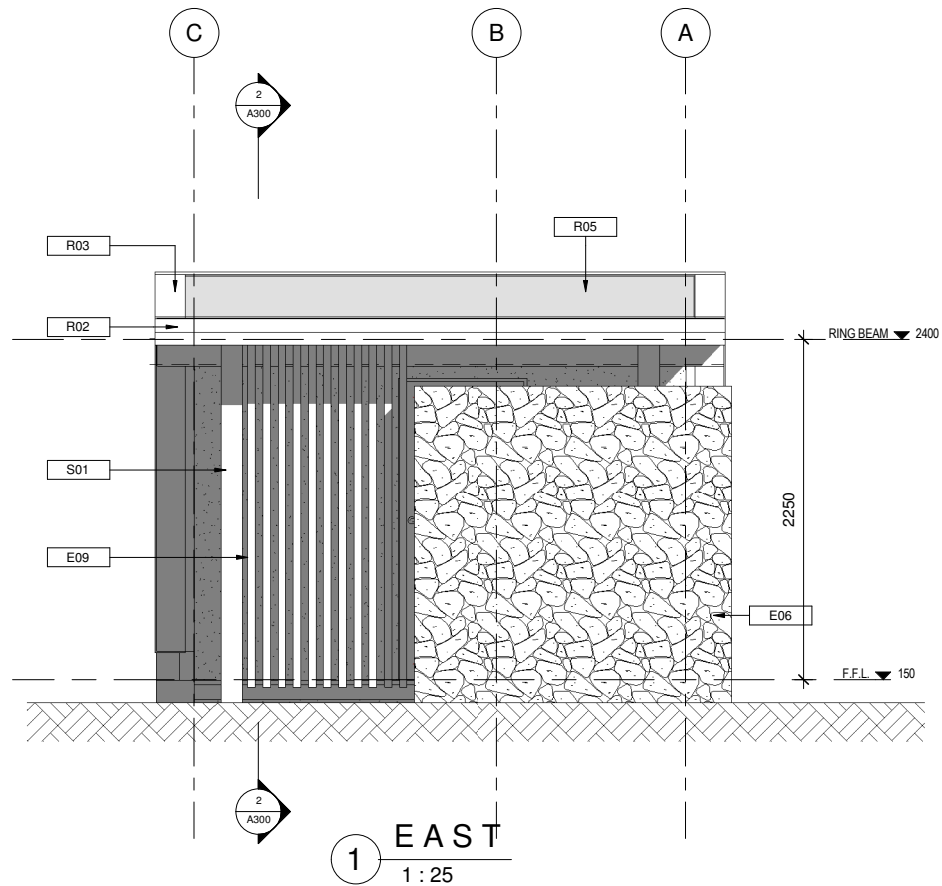
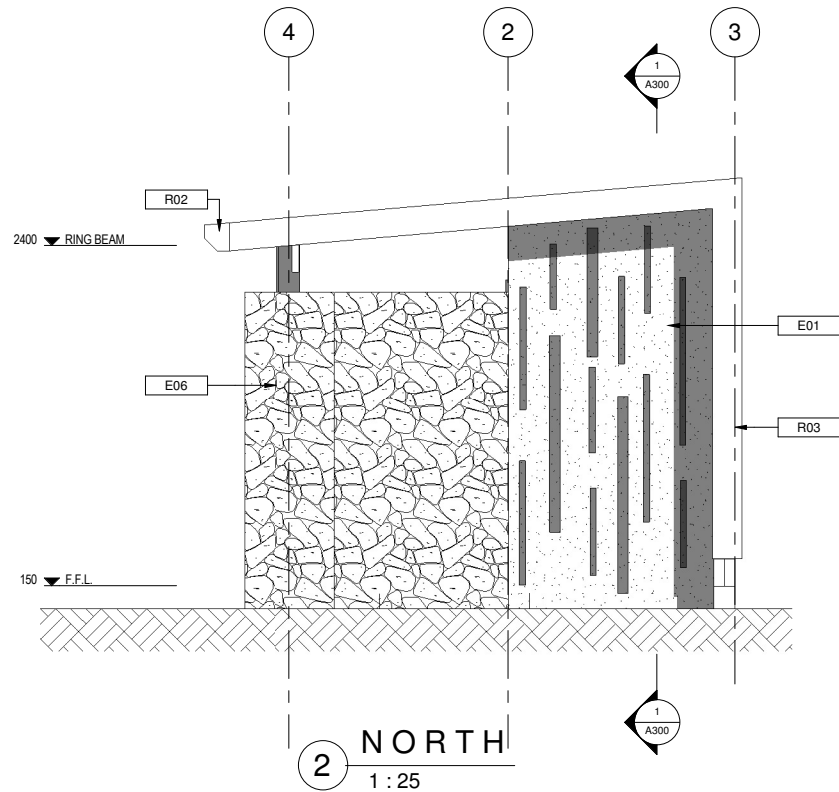
NOTES	
Key Value	Keynote Text
R02	CUSTOM COLORBOND GUTTER.
R03	COLORBOND BARGE FLASHING, TO MATCH ROOF SHEETING.
R05	COLORBOND TRIMDEK ROOFING.
S18	140X45 H3.2 TIMBER RAFTERS @ 600MM CRS. FULL DEPTH SOLID BLOCKING @ 450MM MAX CRS. FIX BLOCKING WITH JOIST HANGERS IN BETWEEN RAFTERS.
S21	STRAP BRACING.
S22	190X45 H3.2 TIMBER BEAM. FIX WITH 2/STAINLESS STEEL M12 BOLTS TO POSTS.
S23	140X45 H3.2 EDGE RAFTER.
S24	140X45 H3.2 TIMBER OUTRIGGER.



1 ROOF PLAN
1 : 20

FOR TENDER

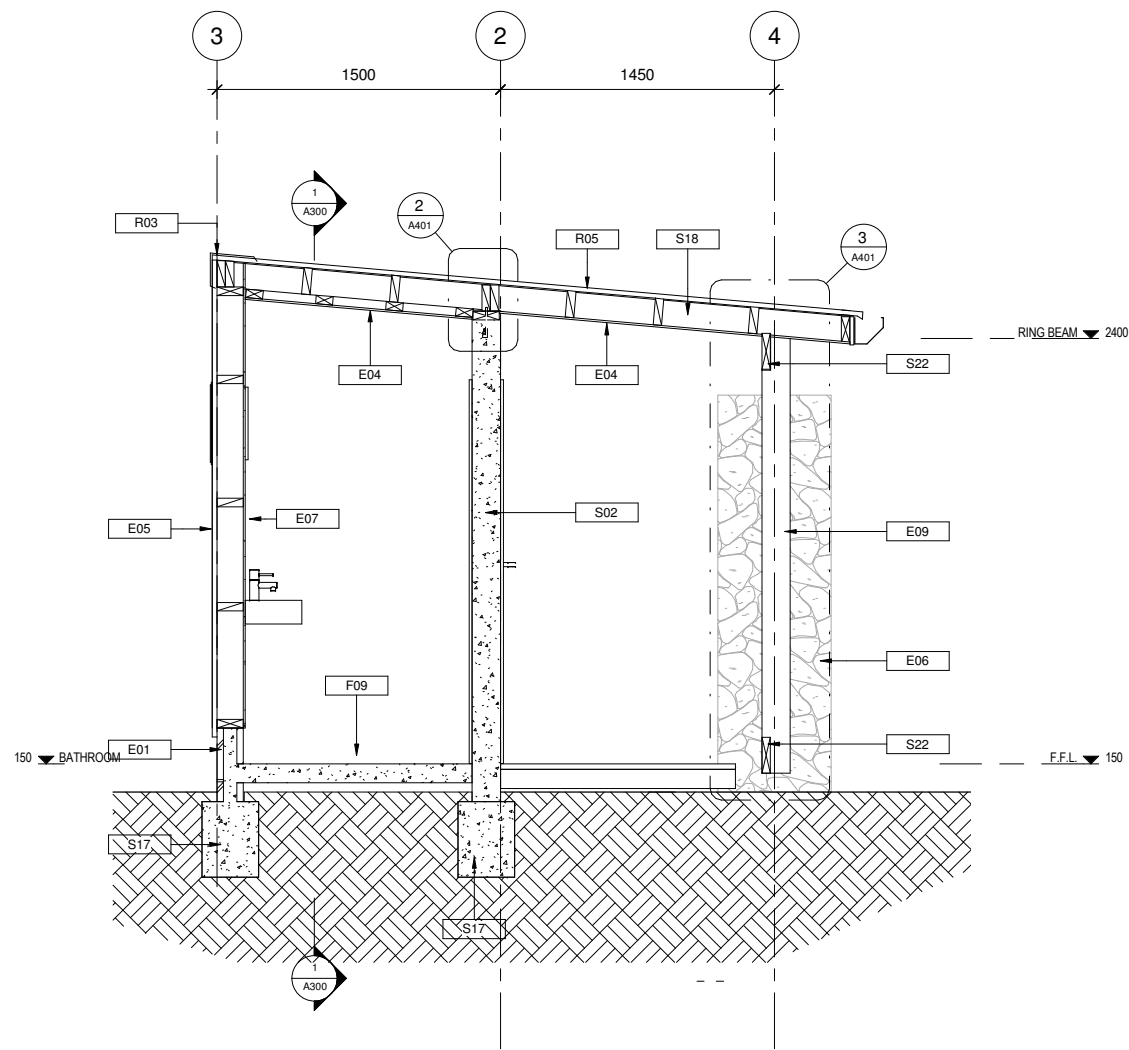
REVISIONS	REV	DATE	DESCRIPTION	DWN	ENG	CHK	CLIENT SAMOA TOURISM AUTHORITY Kramer Ausenco PROFESSIONAL PROJECT MANAGERS ENGINEERS - SURVEYORS - ARCHITECTS First Floor, Maxkar House Cnr Convent Street and Saleufi Rd, Saleufi P.O. Box 593, Apia, SAMOA Phone: (685) 30353 Fax: (685) 30355 Email: apia@kramerausenco.com Web: www.kramerausenco.com	QUALITY		GEF TOURISM CLIMATE RESILIENCE PROJECT		PROJECT No.	SCALE:
								DRAWN:	DATE:			16290W	AS NOTED
								DRAWING CHECKED:	DATE:	PROJECT DESCRIPTION PROPOSED TOILET BLOCK & VIEWING PLATFORM, TAGA, SAVAI'I	DRAWING TITLE ROOF PLANS - TOILET BLOCK	DRAWING No.	REVISION
								ENGINEER:	DATE:				
								DESIGN CHECKED:	DATE:				
								DIRECTOR/MANAGER	DATE:				



NOTES	
Key Value	Keynote Text
E01	15 SERIES MASONRY BLOCK FOUNDATION WALL. D12 @ 400 CRS VERTICAL, D12 @ 600 CRS HORIZONTAL. PAINTED.
E06	2100MM HIGH X 600MM THICK GABION BASKET ROCK WALL.
E09	150X50H3.2 TIMBER SLATTED SHADES. CABBOTS KWILA STAIN FINISH.
E10	
F01	PREMIUM GRADE RADIATA TIMBER DECKING. GROOVED SIDE DOWN ON TIMBER FLOOR JOISTS @ 450MM MAX CRS. CLEAR OIL STAIN FINISH.
R02	CUSTOM COLORBOND GUTTER.
R03	COLORBOND BARGE FLASHING, TO MATCH ROOF SHEETING.
R05	COLORBOND TRIMDEK ROOFING.
S01	150MM DIAMETER MIN TIMBER POSTS (POUMULI OR H5 TREATED) 900MM MIN EMBEDMENT IN CONCRETE, 100MM COVER ALL DIRECTIONS. POLYURETHANE FINISH. NO CARVINGS PERMITTED.
S02	150MM THICK REINFORCED INSITU CONCRETE WALL. D12 @ 200CRS BOTH DIRECTIONS. 'MUSHROOM' COLOURED OXIDE TO CONCRETE MIX. SEAL WITH PETER FELL CLEAR SEALER.
S22	190X45 H3.2 TIMBER BEAM. FIX WITH 2/STAINLESS STEEL M12 BOLTS TO POSTS.

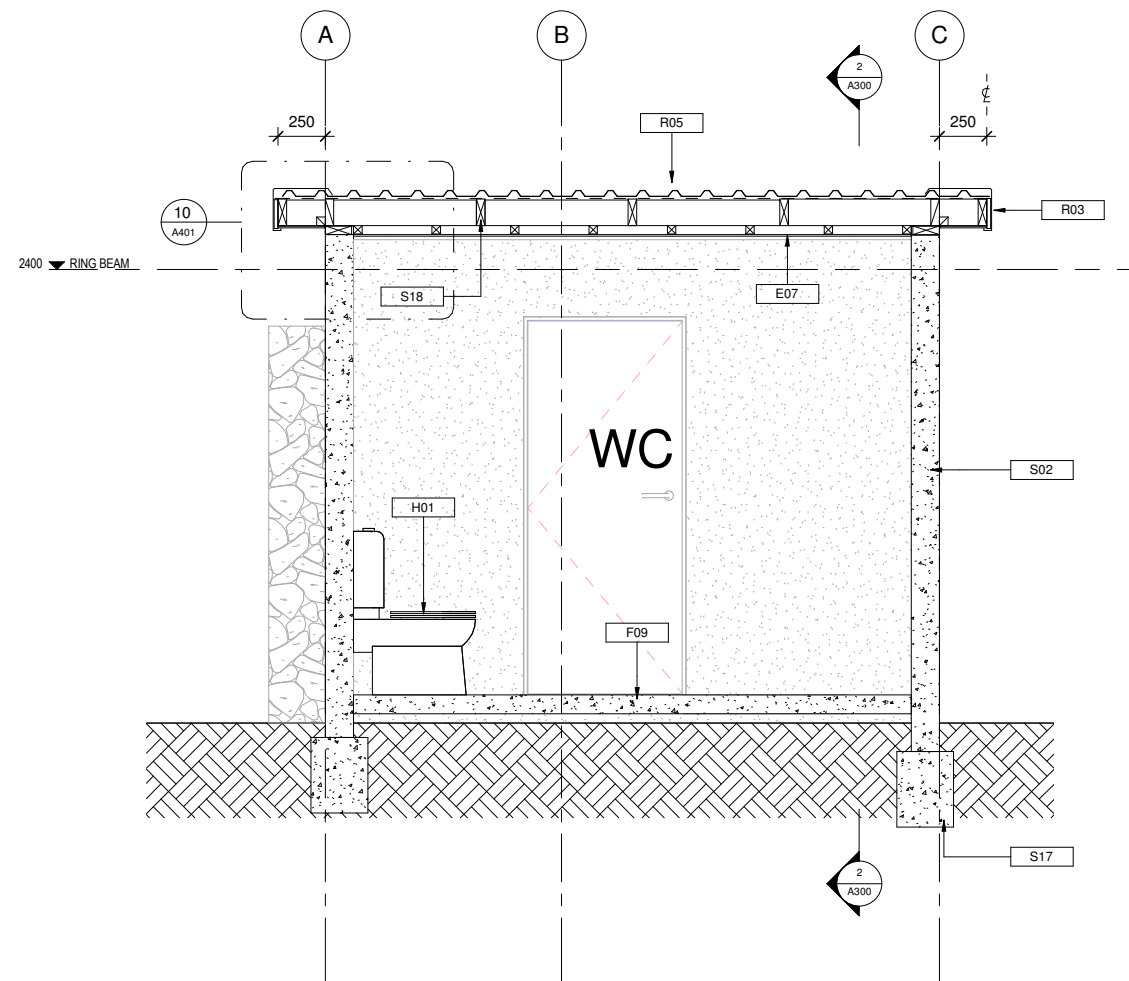
FOR TENDER

REVISIONS	REV	DATE	DESCRIPTION	DWN	ENG	CHK	CLIENT SAMOA TOURISM AUTHORITY Kramer Ausenco PROFESSIONAL PROJECT MANAGERS ENGINEERS - SURVEYORS - ARCHITECTS First Floor, Maxkar House Cnr Convent Street and Saleufi Rd, Saleufi P.O. Box 593, Apia, SAMOA Phone: (685) 30353 Fax: (685) 30355 Email: apia@kramerausenco.com Web: www.kramerausenco.com	QUALITY		GEF TOURISM CLIMATE RESILIENCE PROJECT		PROJECT No.	SCALE:
								DRAWN:	DATE:			PROPOSED TOILET BLOCK & VIEWING PLATFORM, TAGA, SAVAI'I	ELEVATIONS - TOILET BLOCK
								DRAWING CHECKED:	DATE:				
								ENGINEER:	DATE:				
								DESIGN CHECKED:	DATE:				
								DIRECTOR/MANAGER	DATE:				
												DRAWING No.	REVISION
												A200	



2 SECTION A
1 : 20

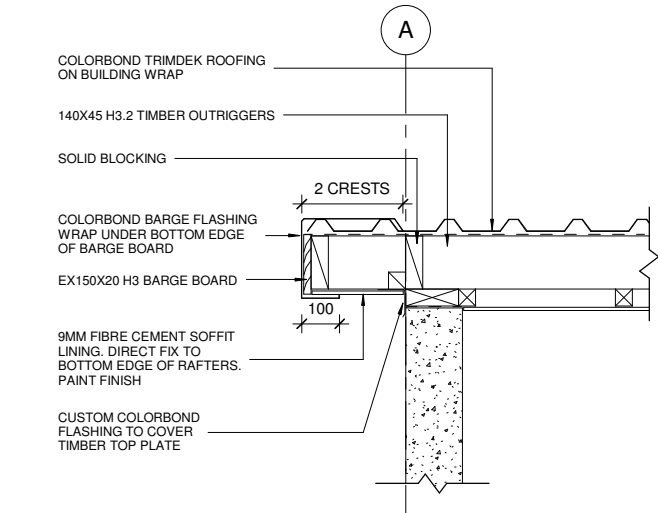
NOTES	
Key Value	Keynote Text
E01	15 SERIES MASONRY BLOCK FOUNDATION WALL D12 @ 400 CRS VERTICAL, D12 @ 600 CRS HORIZONTAL. PAINTED.
E04	9MM FIBRE CEMENT CEILING/ SOFFIT LINING. SCREW FIXED TO TIMBER FRAMING. PAINT FINISH. BEVEL EDGES.
E05	COLORBOND TRIMDECK PROFILE CLADDING ON BUILDING WRAP ON 140X45 H3.2 TIMBER STUDS @ 600MM MAX CRS, NOGS @ 800CRS.SURFMIST COLOUR.
E06	2100MM HIGH X 600MM THICK GABION BASKET ROCK WALL.
E07	20MM THICK H3.2 TIMBER PLANK WALL LINING. CABBOTS CLEAR OIL FINISH.
E09	150X50H3.2 TIMBER SLATTED SHADES. CABBOTS KWILA STAIN FINISH.
F09	100MM THICK CONCRETE FLOOR SLAB. SMOOTH TROWEL FINISH. APPLY PETER FELL BLACK OXIDE TO CONCRETE MIX AND CLEAR SEAL WITH PETER FELL SATIN CONCRETE SEALER.
H01	TOILET BOWL/CISTERN.
H02	WALL MOUNTED WASH BASIN.
R03	COLORBOND BARGE FLASHING, TO MATCH ROOF SHEETING.
R05	COLORBOND TRIMDEK ROOFING.
S02	150MM THICK REINFORCED INSITU CONCRETE WALL. D12 @ 200CRS BOTH DIRECTIONS. 'MUSHROOM' COLOURED OXIDE TO CONCRETE MIX. SEAL WITH PETER FELL CLEAR SEALER.
S17	400X300 CONCRETE FOOTING. 2-D16 TOP AND BOTTOM. R6 STIRRUPS @ 300 CRS. 75MM MIN COVER TO REBAR.
S18	140X45 H3.2 TIMBER RAFTERS @ 600MM CRS. FULL DEPTH SOLID BLOCKING @ 450MM MAX CRS. FIX BLOCKING WITH JOIST HANGERS IN BETWEEN RAFTERS.
S22	190X45 H3.2 TIMBER BEAM. FIX WITH 2/STAINLESS STEEL M12 BOLTS TO POSTS.



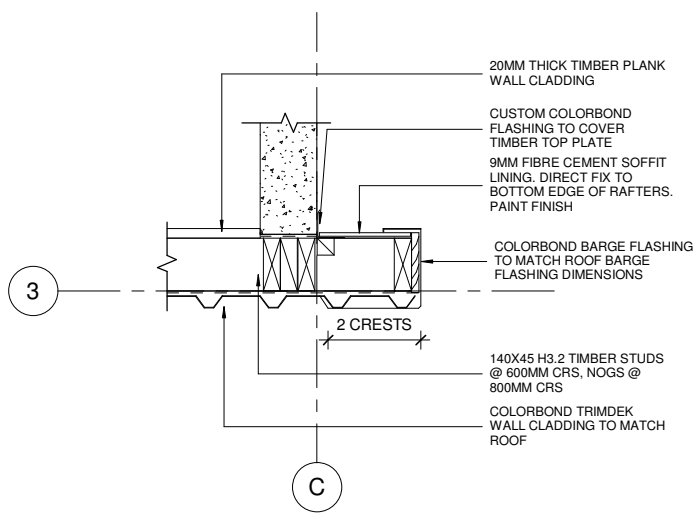
1 SECTION D
1 : 20

FOR TENDER

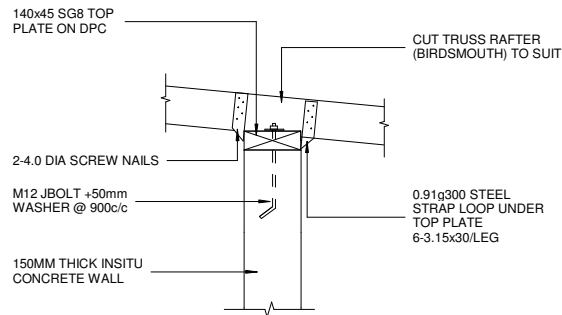
REVIEWS	REV	DATE	DESCRIPTION	DWN	ENG	CHK	CLIENT SAMOA TOURISM AUTHORITY	<div>Kramer Ausenco PROFESSIONAL PROJECT MANAGERS ENGINEERS - SURVEYORS - ARCHITECTS</div> <div>First Floor, Maxkar House Cnr Convent Street and Saleufi Rd, Saleufi P.O. Box 593, Apia, SAMOA Phone: (685) 30353 Fax: (685) 30355 Email: apia@kramerausenco.com Web: www.kramerausenco.com</div>	QUALITY		GEF TOURISM CLIMATE RESILIENCE PROJECT		PROJECT No.	SCALE:																																																																																																																																																																																																																																																																																																																																																																																																																																																																																																																																																																																																																																																																																																																																																																																																																																																																																																																																																																																																																																																																																																																																																																																																																																																																																																													
																																																																																																																																																																																																																																																																																																																																																																																																																																																																																																																																																																																																																																																																																																																																																																																																																																																																																																																																																																																																																																																																																																																																																																																																																																																																																																																											</



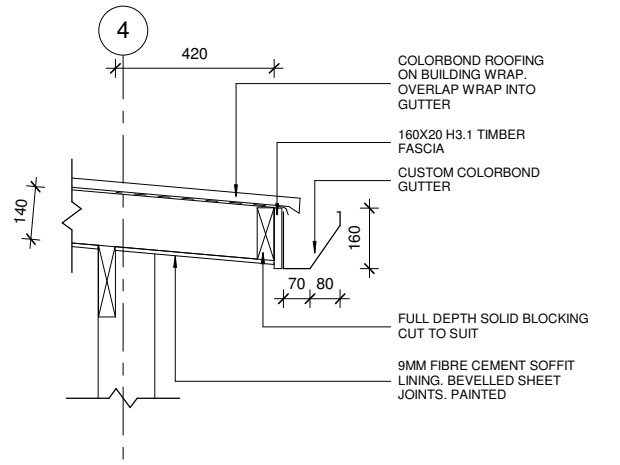
10 BARGE DETAIL
1 : 10



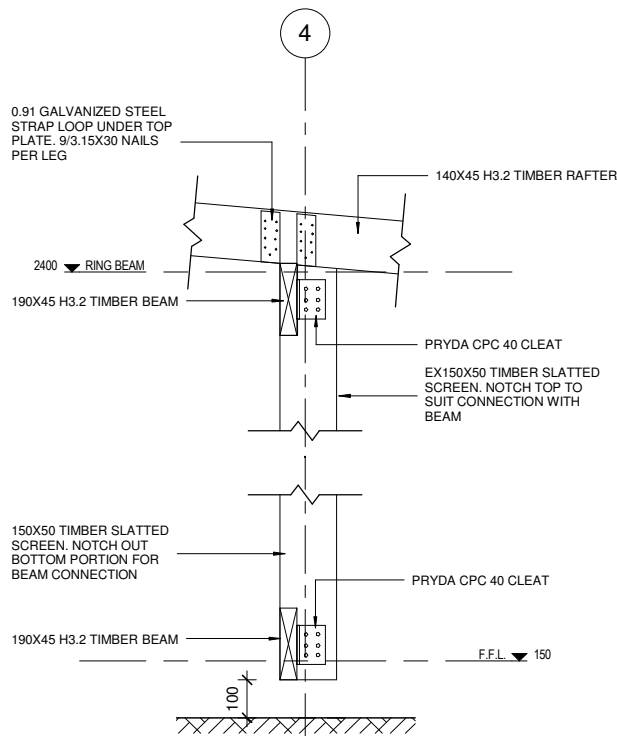
1 TIMBER WALL OVERHANG DETAIL (PLAN)
1 : 10



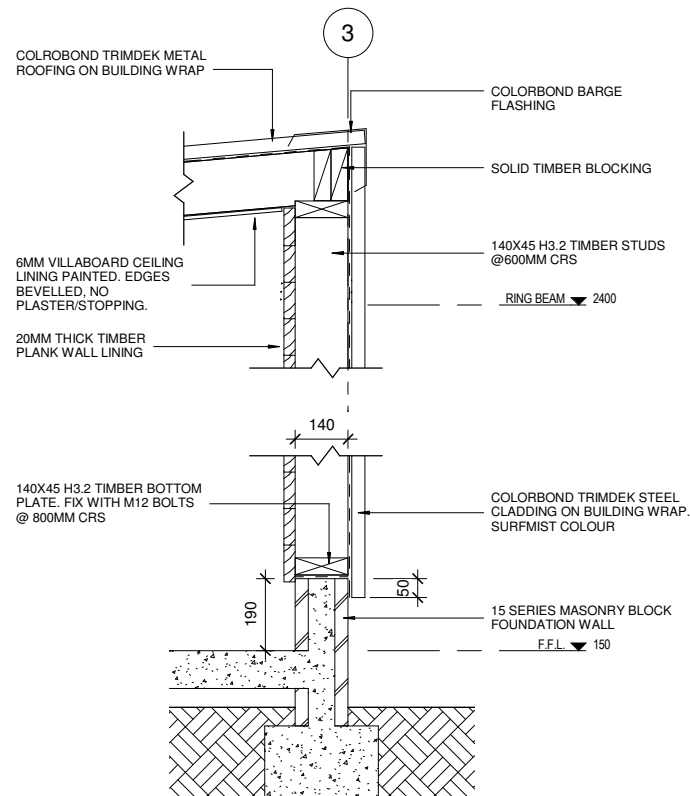
2 WALL TO ROOF JUNCTION
1 : 10



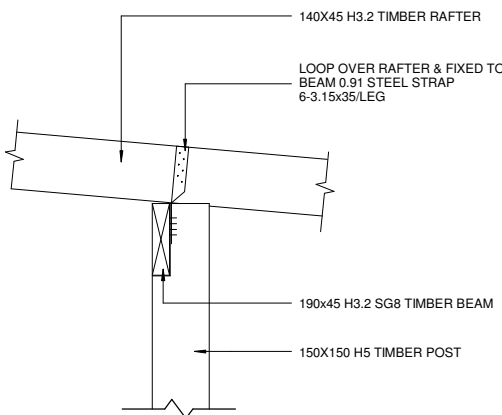
7 TYPICAL EAVES DETAIL
1 : 10



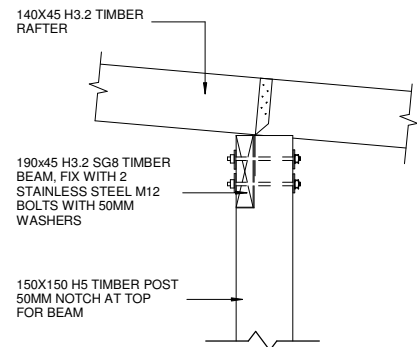
3 SLATTED SHADE DETAIL
1 : 10



6 TIMBER WALL SECTION
1 : 10



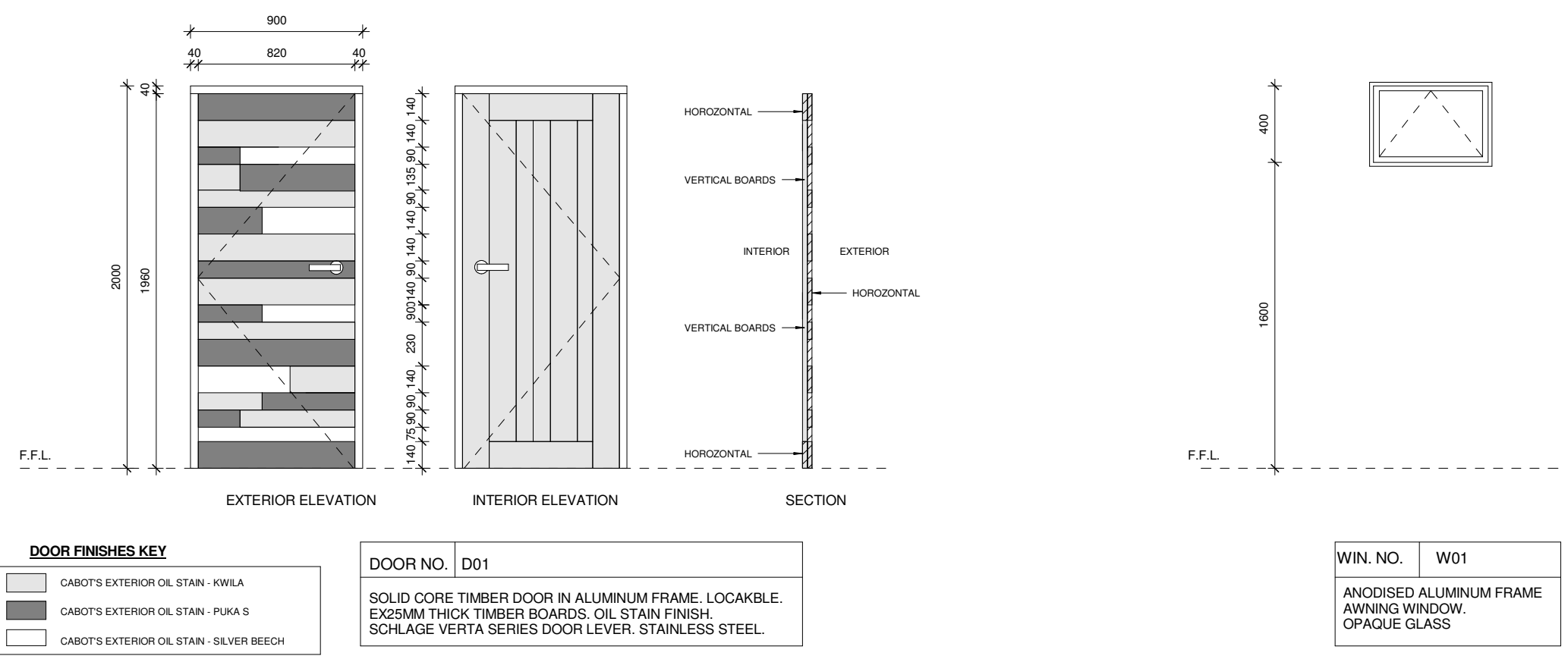
4 RAFTER TO BEAM DETAIL
1 : 10



5 POST TO BEAM DETAIL
1 : 10

FOR TENDER

REVISIONS	REV	DATE	DESCRIPTION	DWN	ENG	CHK	CLIENT SAMOA TOURISM AUTHORITY	<div>Kramer Ausenco PROFESSIONAL PROJECT MANAGERS ENGINEERS - SURVEYORS - ARCHITECTS</div> <div>First Floor, Maxkar House Cnr Convent Street and Saleufi Rd, Saleufi P.O. Box 593, Apia, SAMOA Phone: (685) 30353 Fax: (685) 30355 Email: apia@kramerausenco.com Web: www.kramerausenco.com</div>	QUALITY		GEF TOURISM CLIMATE RESILIENCE PROJECT		PROJECT No.	SCALE: AS NOTED FULL SIZE A1		
													DRAWN:	DATE:	16290W	
											DRAWING CHECKED:	DATE:	PROJECT DESCRIPTION PROPOSED TOILET BLOCK & VIEWING PLATFORM, TAGA, SAVAI'I	DRAWING TITLE CONSTRUCTION DETAILS - TOILET BLOCK		DRAWING No. A401
											ENGINEER:	DATE:				
											DESIGN CHECKED:	DATE:				
											DIRECTOR/MANAGER	DATE:				

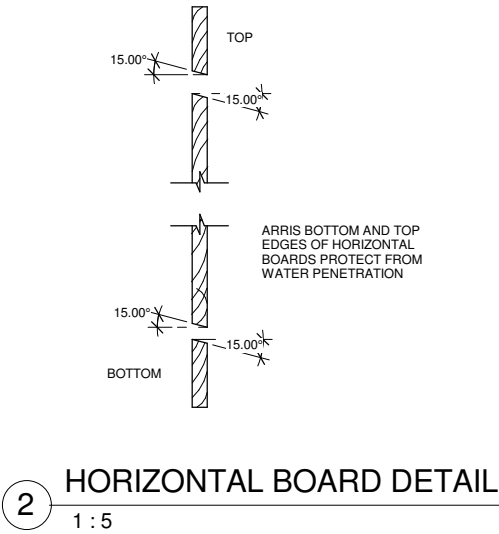


DOOR FINISHES KEY	
<div></div>	CABOT'S EXTERIOR OIL STAIN - KWILA
<div></div>	CABOT'S EXTERIOR OIL STAIN - PUKA S
<div></div>	CABOT'S EXTERIOR OIL STAIN - SILVER BEECH

DOOR NO.	D01
SOLID CORE TIMBER DOOR IN ALUMINUM FRAME. LOCKABLE. EX25MM THICK TIMBER BOARDS. OIL STAIN FINISH. SCHLAGE VERTA SERIES DOOR LEVER. STAINLESS STEEL.	

WIN. NO.	W01
ANODISED ALUMINUM FRAME AWNING WINDOW. OPAQUE GLASS	

NOTE:
1.ALL OPENING DIMENSIONS ROUGH OPENING DIMENSIONS ONLY
2. ENSURE ALL TIMBER BOARDS ARE FITTED AND BONDED TIGHTLY.

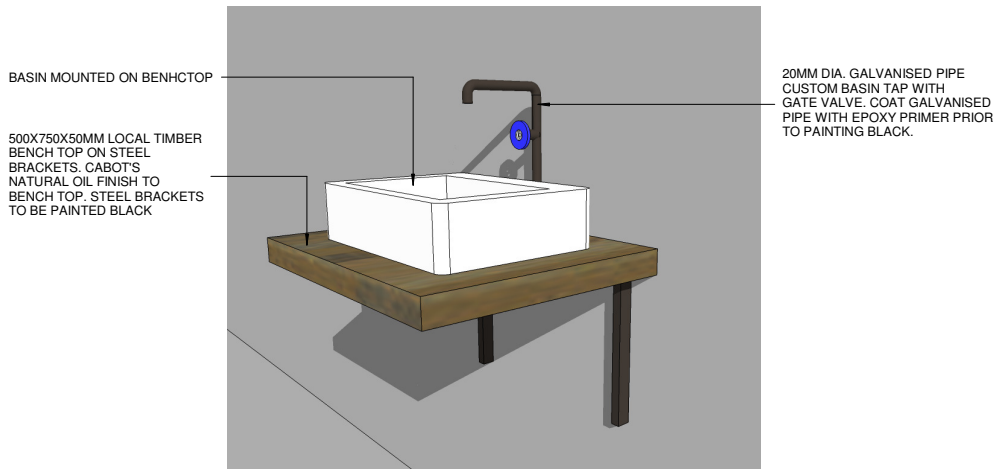


FOR TENDER

REVISIONS	REV	DATE	DESCRIPTION	DWN	ENG	CHK	CLIENT SAMOA TOURISM AUTHORITY First Floor, Maxkar House Cnr Convent Street and Saleufi Rd, Saleufi P.O. Box 593, Apia, SAMOA Phone: (685) 30353 Fax: (685) 30355 Email: apia@kramerausenco.com Web: www.kramerausenco.com	Kramer Ausenco PROFESSIONAL PROJECT MANAGERS ENGINEERS - SURVEYORS - ARCHITECTS	QUALITY		GEF TOURISM CLIMATE RESILIENCE PROJECT		PROJECT No.	SCALE:		
															16290W	AS NOTED FULL SIZE A1
															DRAWING No. A501	REVISION
													PROJECT DESCRIPTION PROPOSED TOILET BLOCK & VIEWING PLATFORM, TAGA, SAVAI'I			

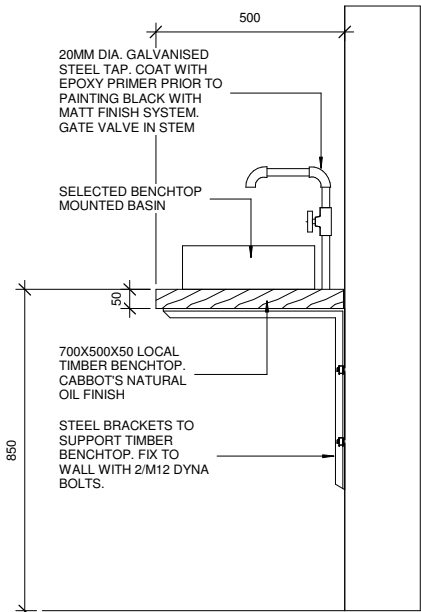


1 GATE VALVE FOR TAP/SHOWER
1 : 10



PERSPECTIVE

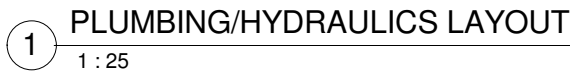
2 BASIN DETAIL - PERSPECTIVE
1 : 10



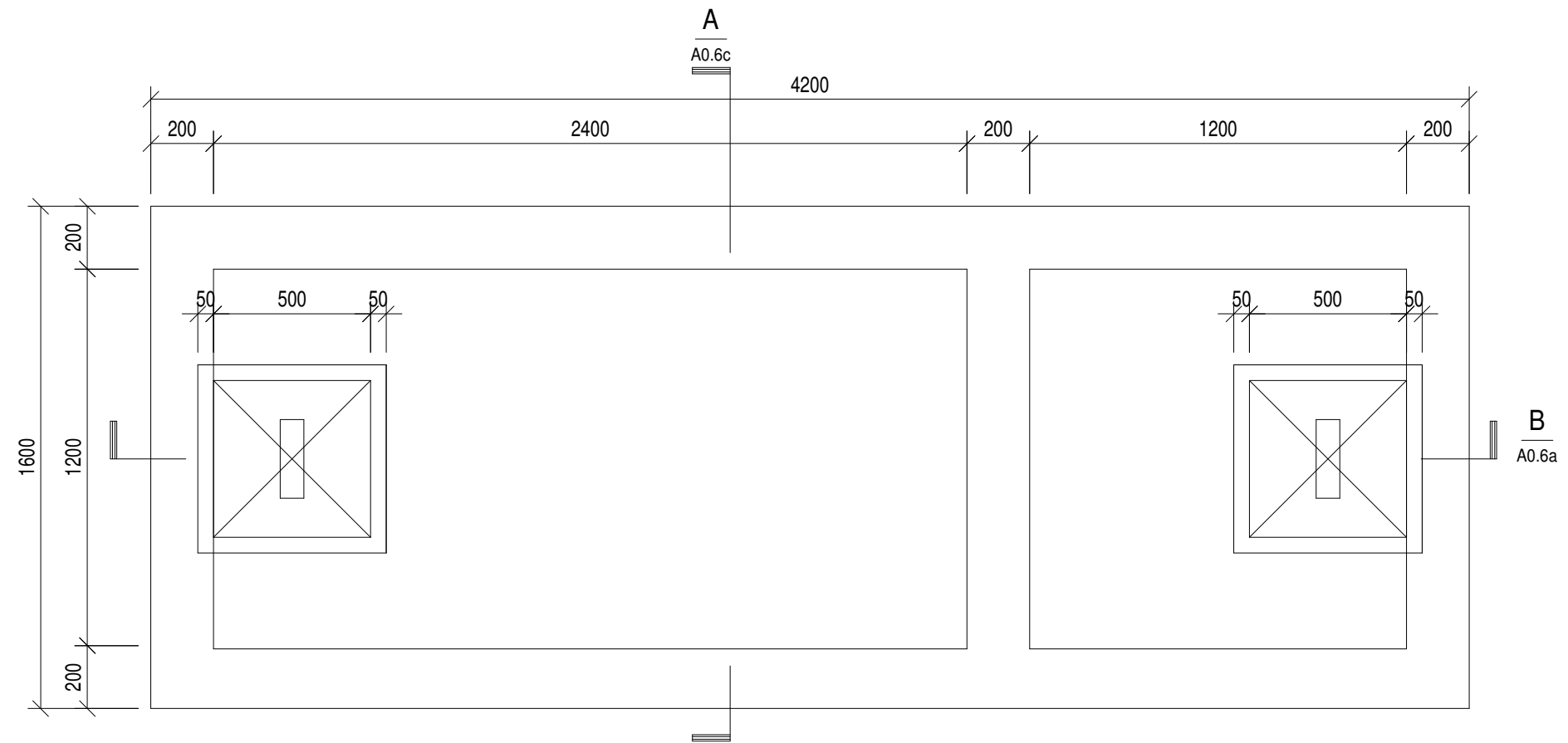
3 BASIN DETAILS - SECTION
1 : 10

FOR TENDER

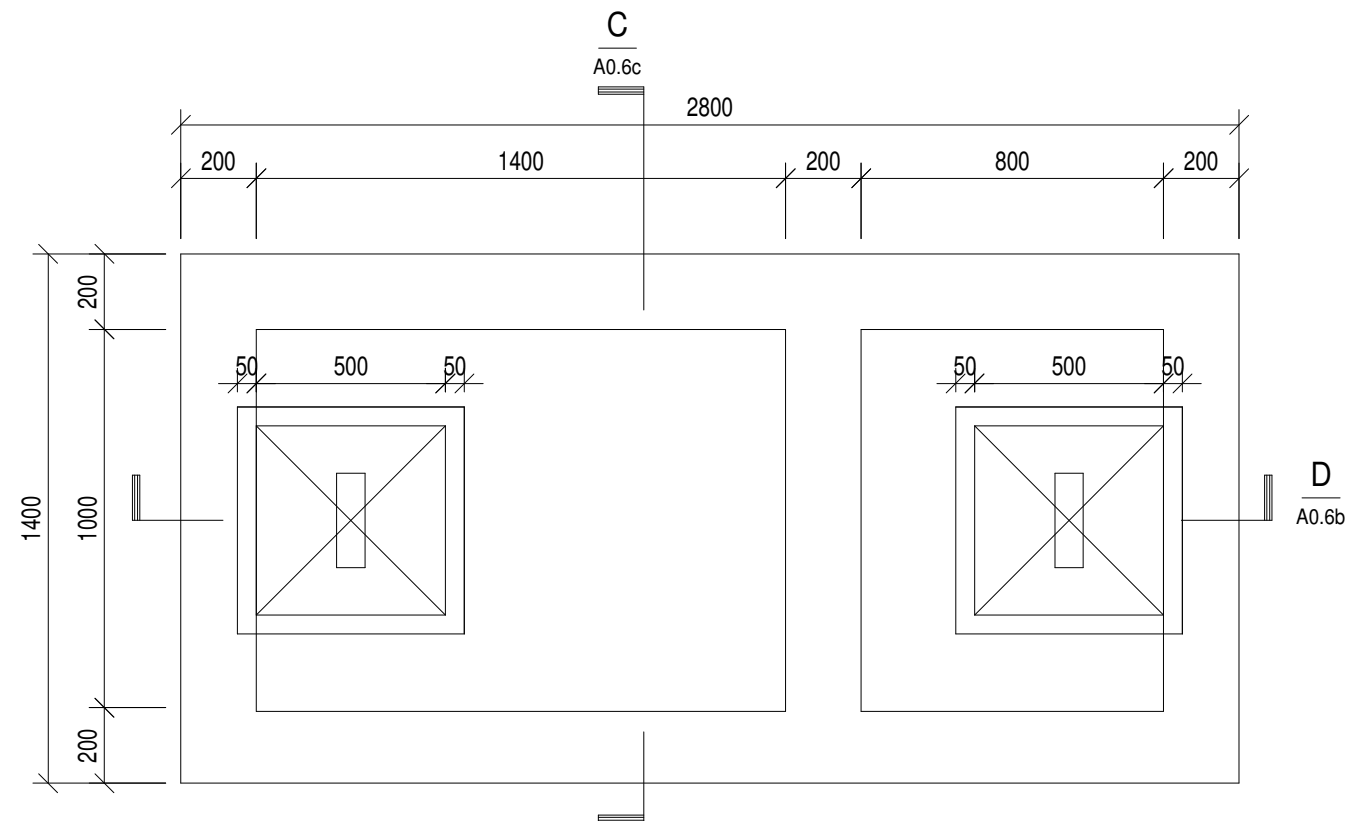
REVISIONS	REV	DATE	DESCRIPTION	DWN	ENG	CHK	CLIENT SAMOA TOURISM AUTHORITY First Floor, Maxkar House Cnr Convent Street and Saleufi Rd, Saleufi P.O. Box 593, Apia, SAMOA Phone: (685) 30353 Fax: (685) 30355 Email: apia@kramerausenco.com Web: www.kramerausenco.com	<div>Kramer Ausenco PROFESSIONAL PROJECT MANAGERS ENGINEERS - SURVEYORS - ARCHITECTS</div> <div>DIRECTOR/MANAGER DATE:</div>	QUALITY		GEF TOURISM CLIMATE RESILIENCE PROJECT				PROJECT No. 16290W	SCALE: AS NOTED FULL SIZE A1		
											DRAWN:	DATE:	PROJECT DESCRIPTION PROPOSED TOILET BLOCK & VIEWING PLATFORM, TAGA, SAVAI'I		DRAWING TITLE BATHROOM DETAILS - TOILET BLOCK		DRAWING No. A502	REVISION
											DRAWING CHECKED:	DATE:						
											ENGINEER:	DATE:						
											DESIGN CHECKED:	DATE:						

[illegible]

Scale 1:20

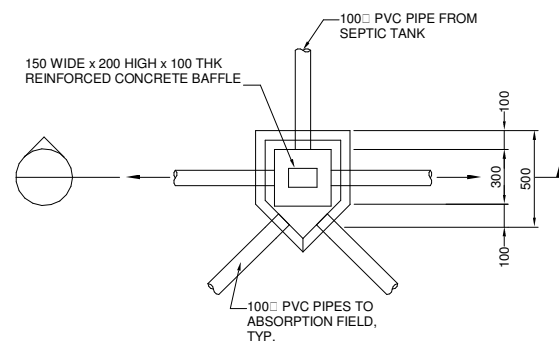
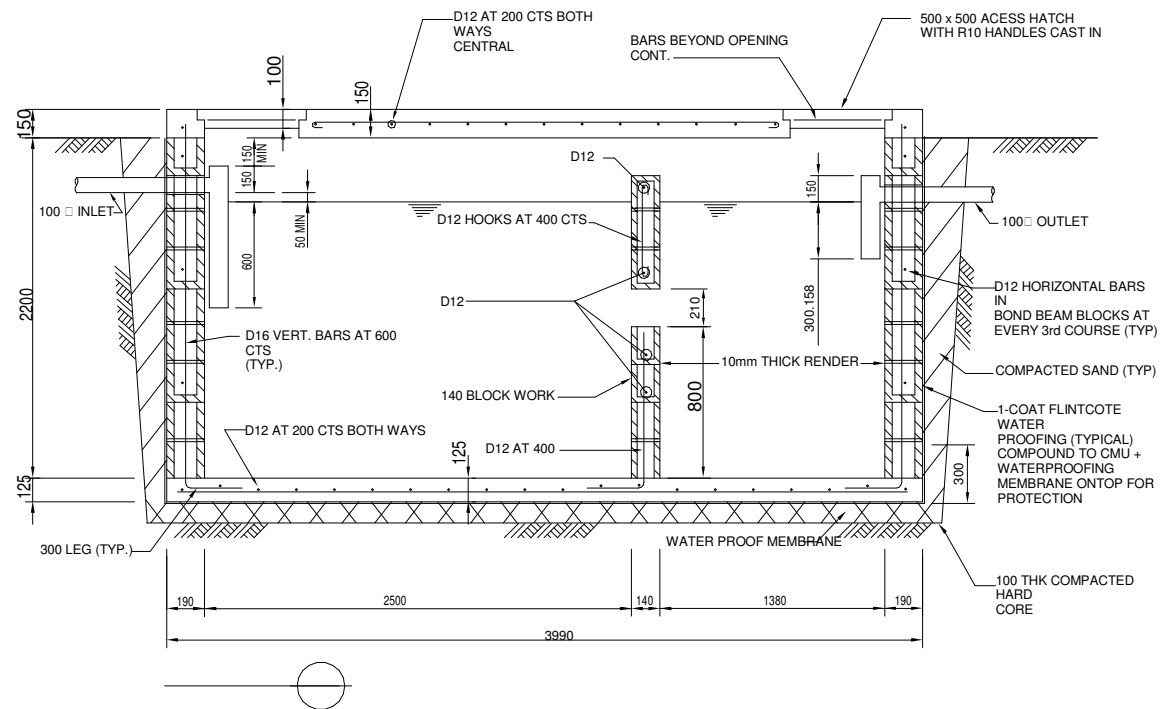
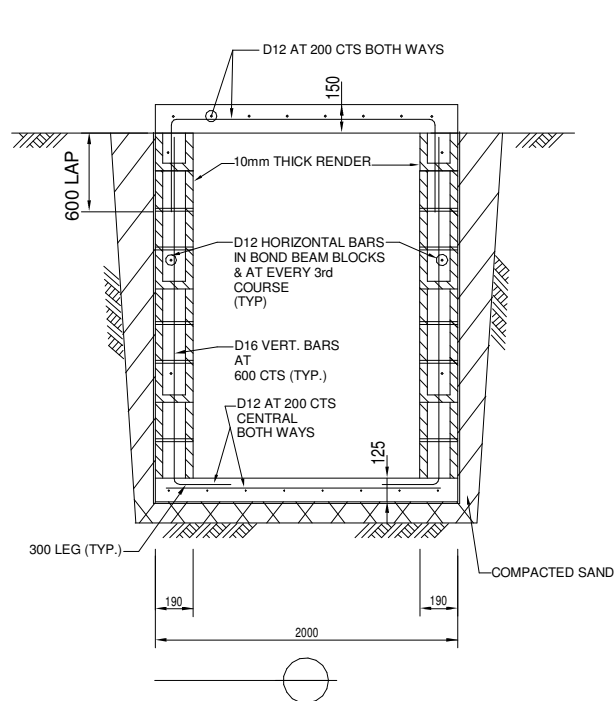


Scale 1:20

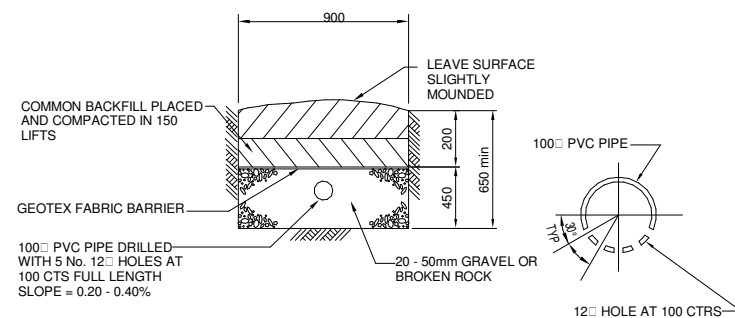
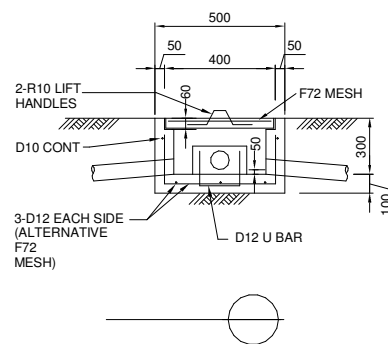


GEF TOURISM CLIMATE RESILIENCE PROJECT

[illegible]



PLAN - DISTRIBUTION BOX



ABSORPTION FIELD TRENCH SECTION
1:20

FOR TENDER

REVISIONS	REV	DATE	DESCRIPTION	DWN	ENG	CHK	CLIENT SAMOA TOURISM AUTHORITY	<div>Kramer Ausenco PROFESSIONAL PROJECT MANAGERS ENGINEERS - SURVEYORS - ARCHITECTS</div> <div>First Floor, Maxkar House Cnr Convent Street and Saleufi Rd, Saleufi P.O. Box 593, Apia, SAMOA Phone: (685) 30353 Fax: (685) 30355 Email: apia@kramerausenco.com Web: www.kramerausenco.com</div>	QUALITY		GEF TOURISM CLIMATE RESILIENCE PROJECT		PROJECT No.	SCALE:			
										DRAWN:	DATE:	PROJECT DESCRIPTION		DRAWING TITLE	16290W	AS NOTED	
										DRAWING CHECKED:	DATE:	PROPOSED TOILET BLOCK & VIEWING PLATFORM, TAGA, SAVAI'I		SEPTIC TANK SECTIONS & DETAILS	DRAWING No.	REVISION	
										ENGINEER:	DATE:						
										DESIGN CHECKED:	DATE:						
											DIRECTOR/MANAGER	DATE:					