

WINDOW TYPE DETAIL

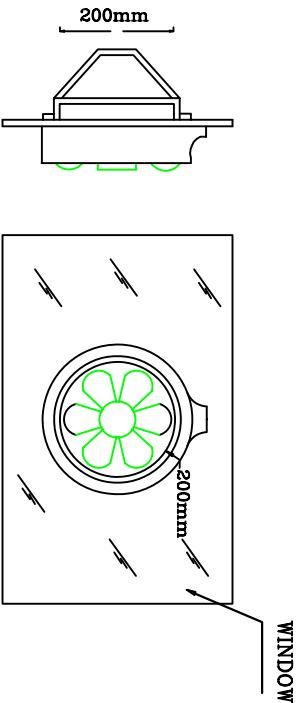
A/C WINDOW TYPE SCHEDULE

A/C No.	No. Req.	TON	CAPACITY		ELECTRICAL POWER		ELECTRICAL CHARACTERISTIC		
			Kcal/hr		KW		V	PH	HZ
			COOLING	HEATING	COOLING	HEATING			
1	5	2	6000	3000	3	3	220	1	50

\*AMPIENT TEMP \_46C°

NOTES:—

- \*THE CONTRACTOR WILL MAKE CAGE ACCORDING TO THE A/C WINDOW UNITS TYPE CAPACITY AND SIZE THAT WE WILL SUPPLY .
- \* INSTALL THE UNIT SLIGHTLY (ABOUT 10mm) TILTED OUT WORD TO PREVENT POSSIBLE WATER LEAKAGE IN TO THE ROOM .
- \*(50x70)cm OPENING ON THE WALL AT LEVEL (2.1m FROM F.F.L. .



INSTALLATION OF EXHAUST FAN ON WINDOW

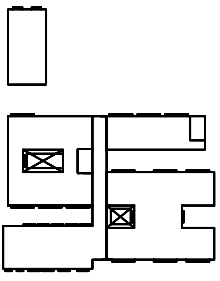
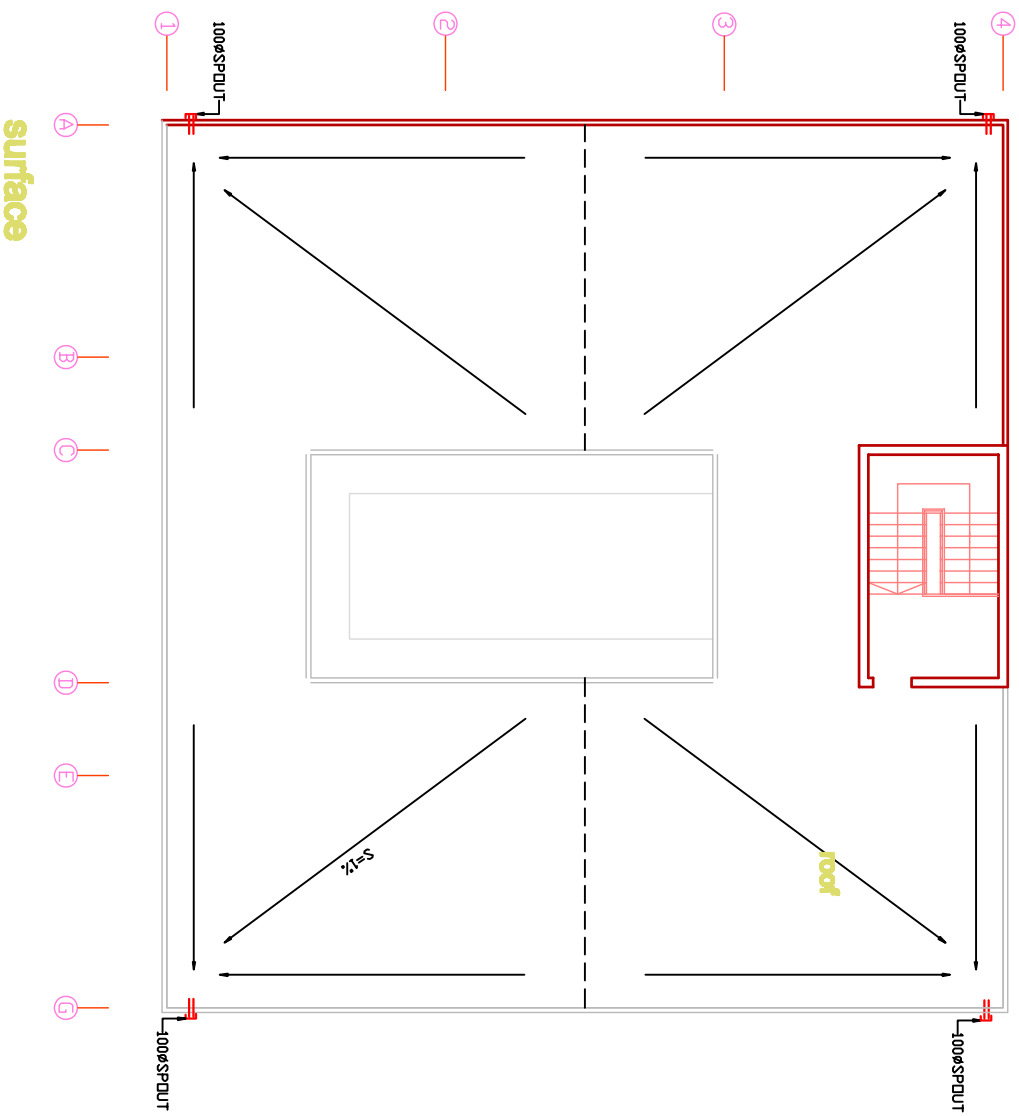
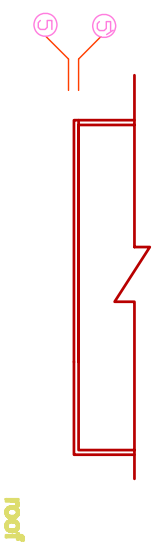
FAN SCHEDULE

TYPE	NO. REQ.	CAPACITY M <sup>3</sup> /HR	MOTOR KW	EX-STATIC PRES.H2OMM	ELECTRICAL CHARACTERISTICS		
					V	PH	HZ
PROPELLER	31	300	.07	0	220	1	50

DATE		INIT		REVISIONS	
MINISTRY OF HOUSING & CONSTRUCTION NATIONAL CENTER FOR ENGINEERING CONSULTANCY					
Job Architect Engineer					
Typical secondary school 18 classrooms					
Drawing Title					
Mechanical works					
Job No.		Dwg No.			
		MS-3			
CL/SFB		REVISION SUFFIX			
SCALE	DATE	DRAWING			
1:100	3/10/2024	S.M.HASSAN		S.M.HASSAN	





[illegible]

**مجلس الوزراء  
الوطني**  
**MINISTRY OF CONSTRUCTION & HOUSING**  
**NATIONAL CENTER FOR SUSTAINABLE CONSTRUCTIVITY**

**job title**

Typical secondary school  
18 classrooms


















## classrooms

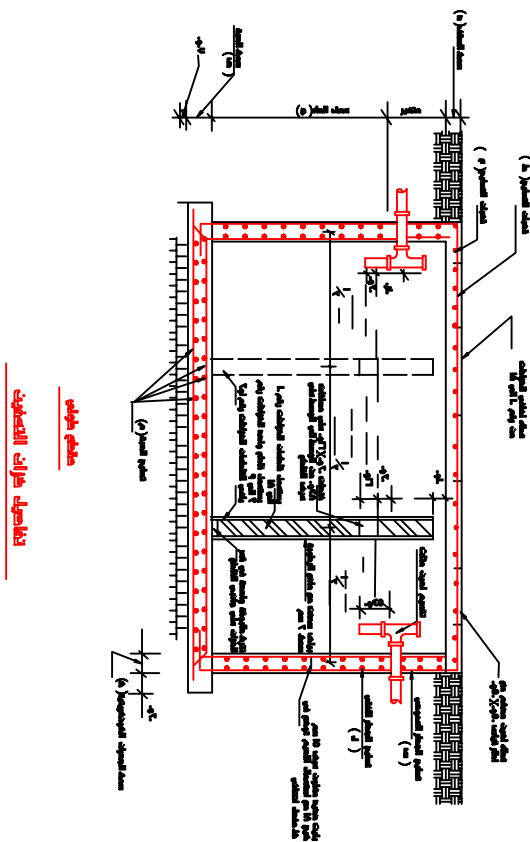
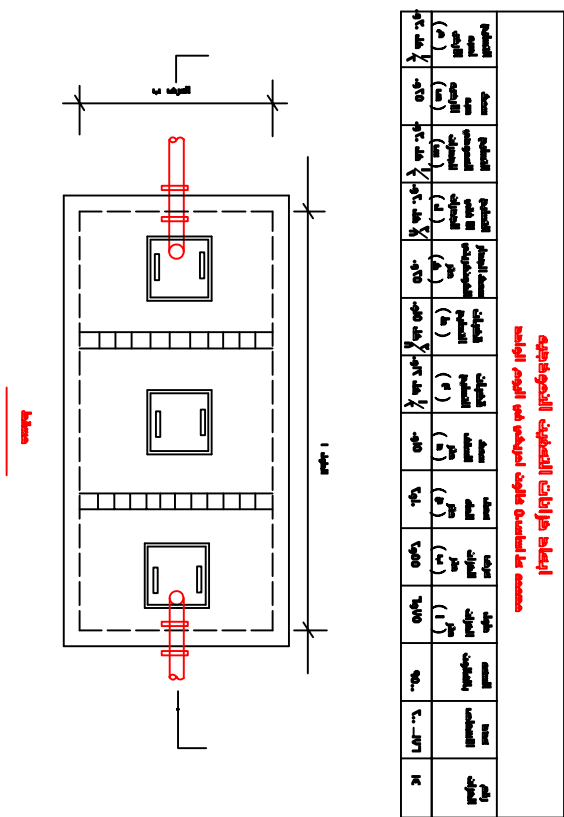
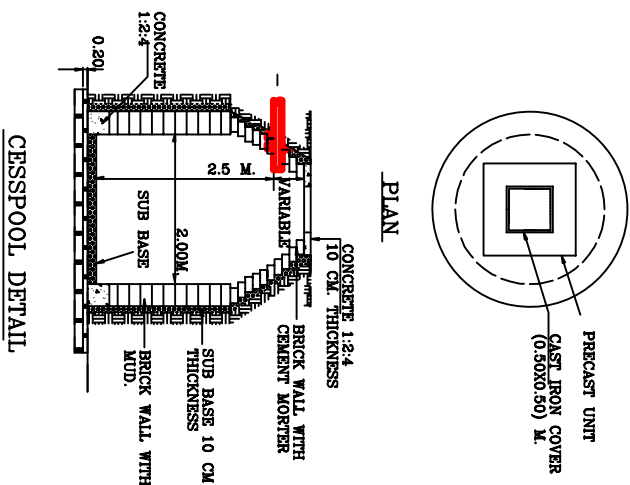
drawing title

**CLASSES ROOM / ROOF**

designated		project manager	
checked	signature	scale	date
drawn	WALA A.	job no.	10/10/2004
approved			SWW : 11

## LEGEND

SYMBOL.	DESCRIPTION
	WASH BASIN
	WATER COOLER
	EUROPEAN W.C.
	EASTERN W.C.
	SINK STALESTEEL
	FLOOR DRAIN CAST IRON (C.I.)
	RAIN WATER PIPE
	VENT PIPE (V.P.)
	ELECTRIC WATER HEATER
	EXTINGUISHER FIRE HYDRANT TYPE ABC, CO2 .
	TAP
	DRAINAGE PIPE
	MANHOLE
	COLD WATER PIPE
	HOT WATER PIPE
	VALVE
	CLEAN OUT(100ø)



<p> <b>الهيئة العامة للتعليم التطبيقي والتدريب</b>  <b>MINISTRY OF CONSTRUCTION &amp; HOUSING</b>  <b>NATIONAL CENTER FOR ENGINEERING CONSULTANCY</b> </p>		<p> <b>الهيئة العامة للتعليم التطبيقي والتدريب</b>  <b>MINISTRY OF CONSTRUCTION &amp; HOUSING</b>  <b>NATIONAL CENTER FOR ENGINEERING CONSULTANCY</b> </p>
<p> <b>Job title</b>  <b>Typical secondary school</b>  <b>18 classrooms</b> </p>	<p> <b>drawing title</b>  <b>Sanitary Details</b> </p>	<p> <b>initials</b>   <b>revision</b> </p>
<p> <b>designed</b>   <b>AMMAR BHATTANI</b> </p>	<p> <b>project manager</b> </p>	
<p> <b>checked</b>   <b>SAYSAN SAMTI</b> </p>	<p> <b>scale</b>   <b>1 / 100</b> </p>	<p> <b>date</b>   <b>10/10/2004</b> </p>
<p> <b>drawn</b>   <b>M.A.L.A. A.</b> </p>	<p> <b>job no.</b> </p>	<p> <b>sheet no.</b> </p>
<p> <b>approved</b> </p>		<p> <b>SAN : 12</b> </p>



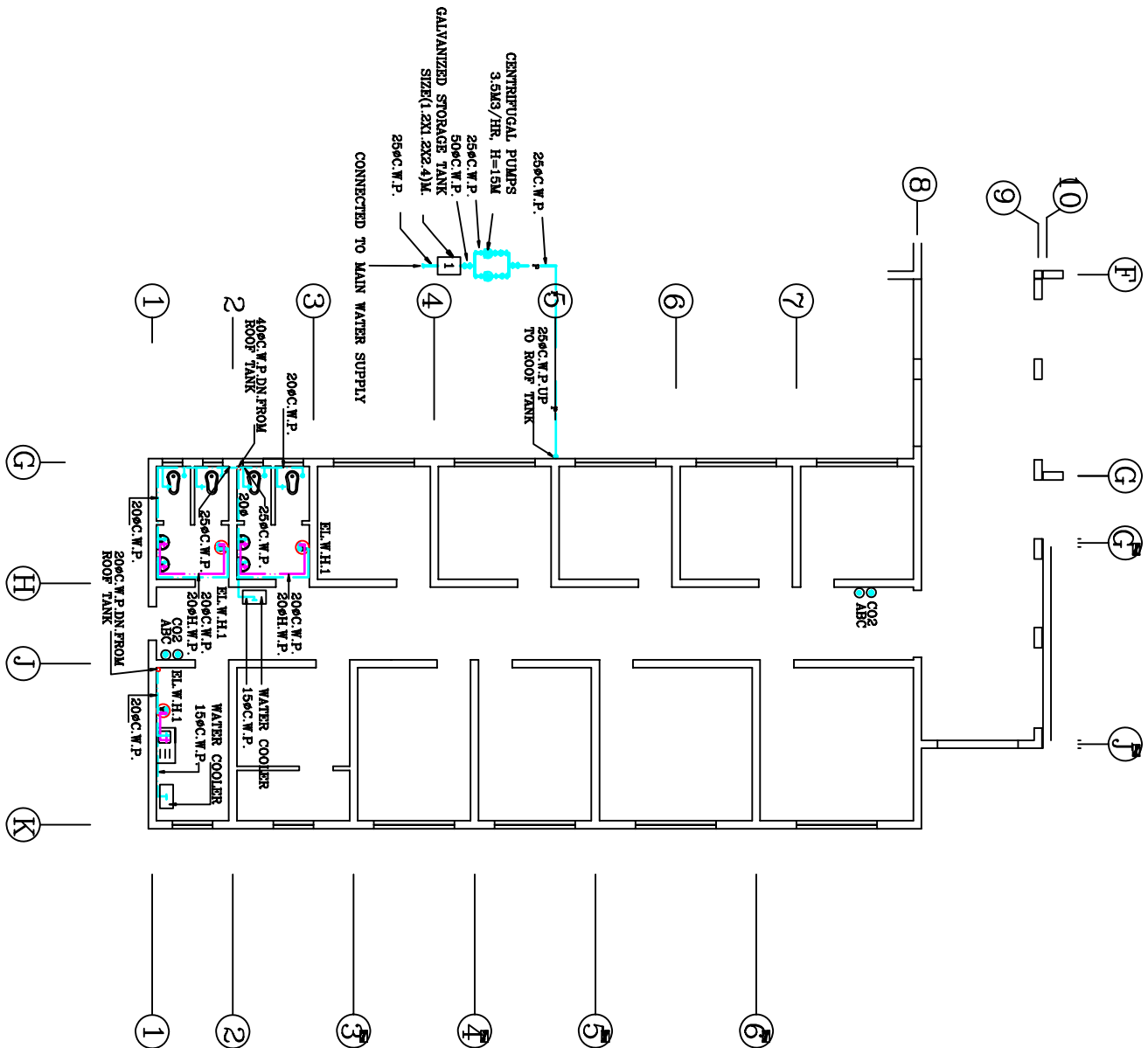


## LEGEND

EL.W.H. 1 - ELECTRICAL WATER HEATER ,WALL MOUNTED  
TYPE(40)LT.CAPACITY (1.5KW) PROVIDED WITH SAFETY  
VALVE

CO2	CO2 FIRE EXTINGUISHER,(9)KG.
ABC	ABC FIRE EXTINGUISHER,(9)KG.

ABC  ABC FIRE EXTINGUISHER .(9)KG.

[illegible]

المركز الوطني  
للبنية التحتية  
المنشآت  
MINISTRY OF CONSTRUCTION & HOUSING  
NATIONAL CENTER FOR ENGINEERING CONSULTANCY

job title

### Typical secondary school

18 classrooms

drawing title

**administration Building  
water and sewage plan**

designed	ANWAR BAHUAT	project manager
checked	SAVSAN SHATI	scale 1 / 100
drawn	MALLA A.	job no.
approved		date 10/10/2007
		sheet no. SAT : 4



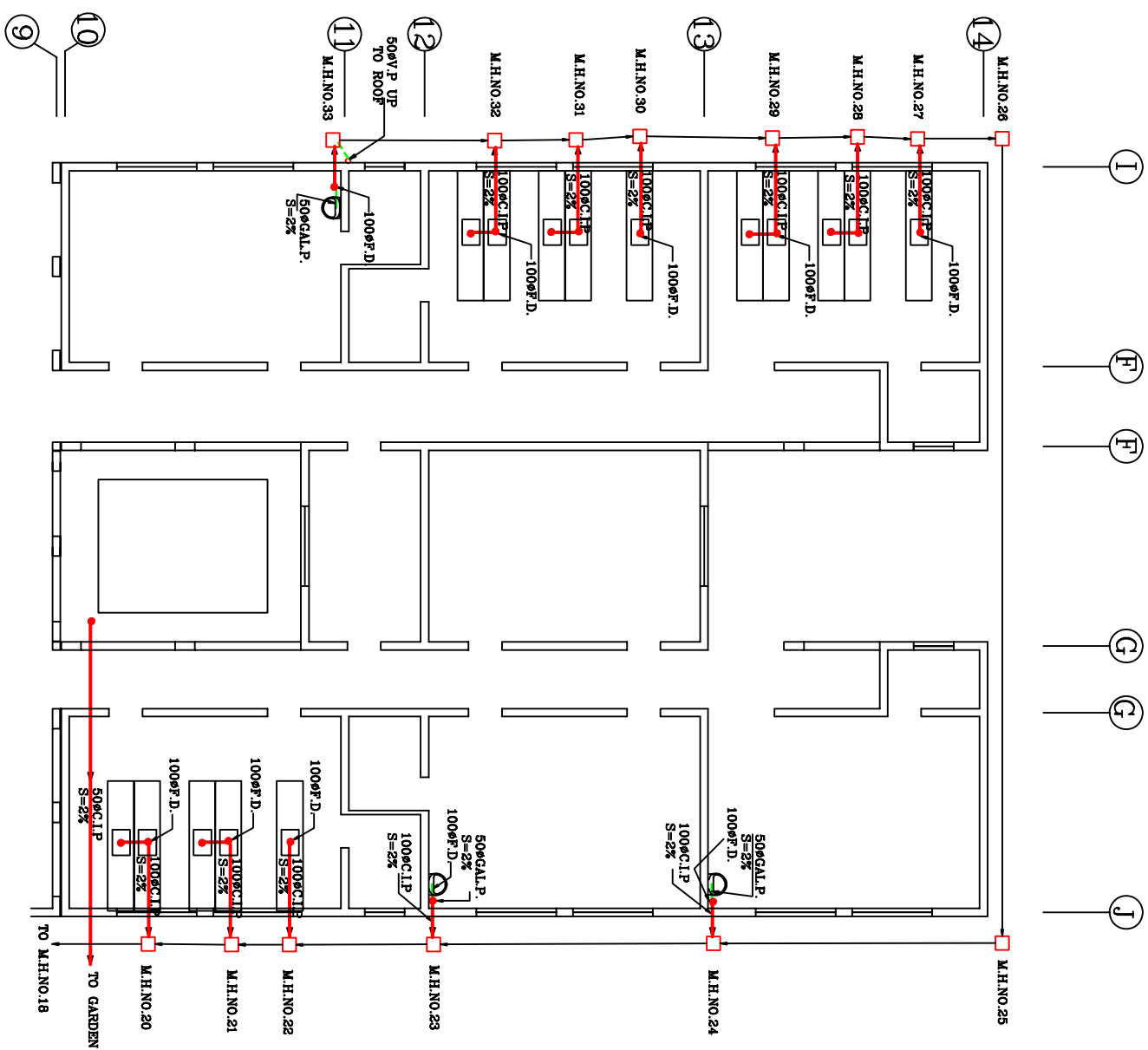
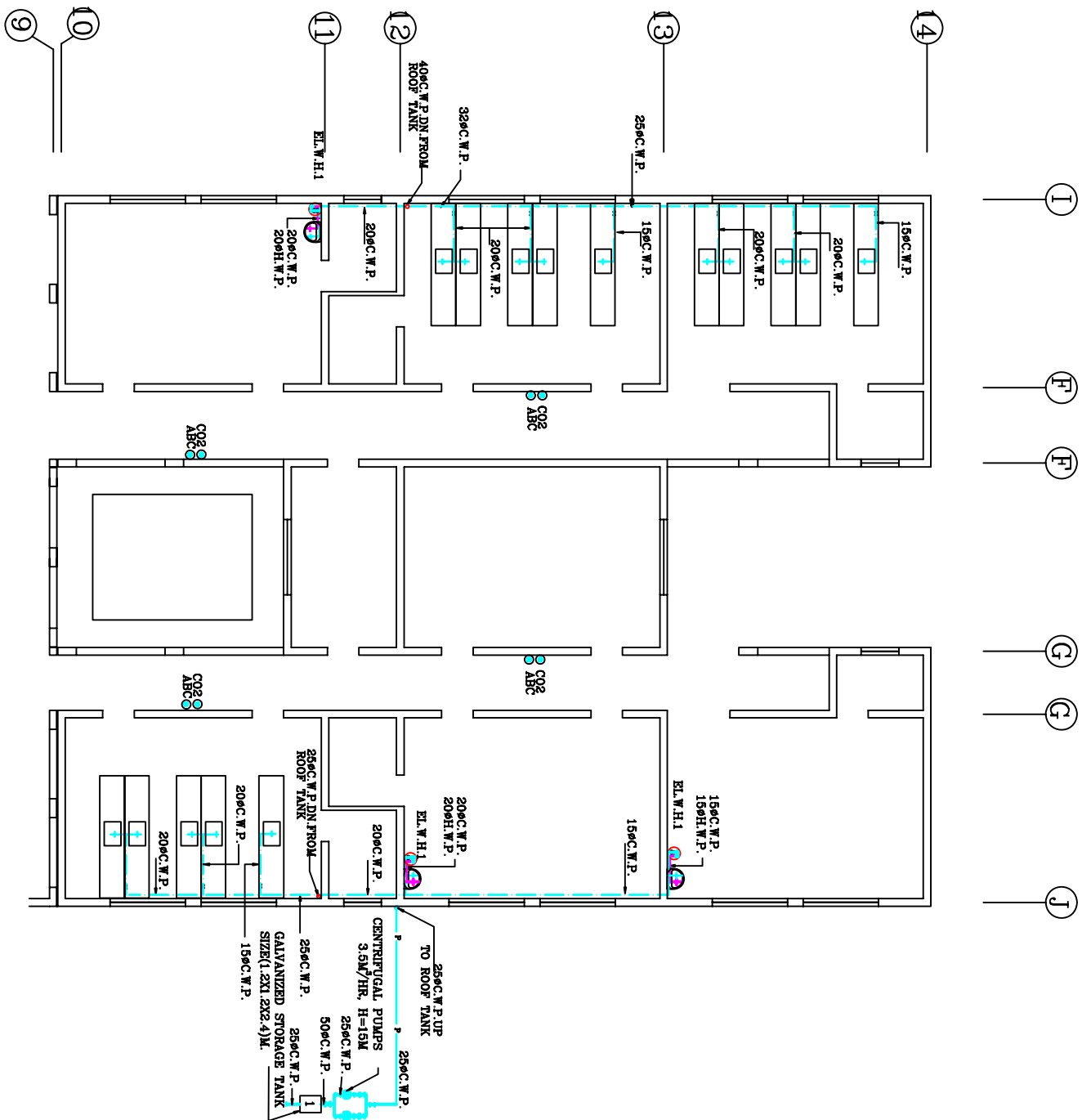
**LEGEND**

EL.W.H. 1 - ELECTRICAL WATER HEATER, WALL MOUNTED  
TYPE(40)LT.CAPACITY (1.5KW) PROVIDED WITH SAFETY  
TYPE(40)LT.CAPACITY (1.5KW) PROVIDED WITH SAFETY

**VALVE**

CO2 FIRE EXTINGUISHER, (9)KG

ABC 

[illegible]

job title

### Typical secondary school

18 classrooms

drawing title

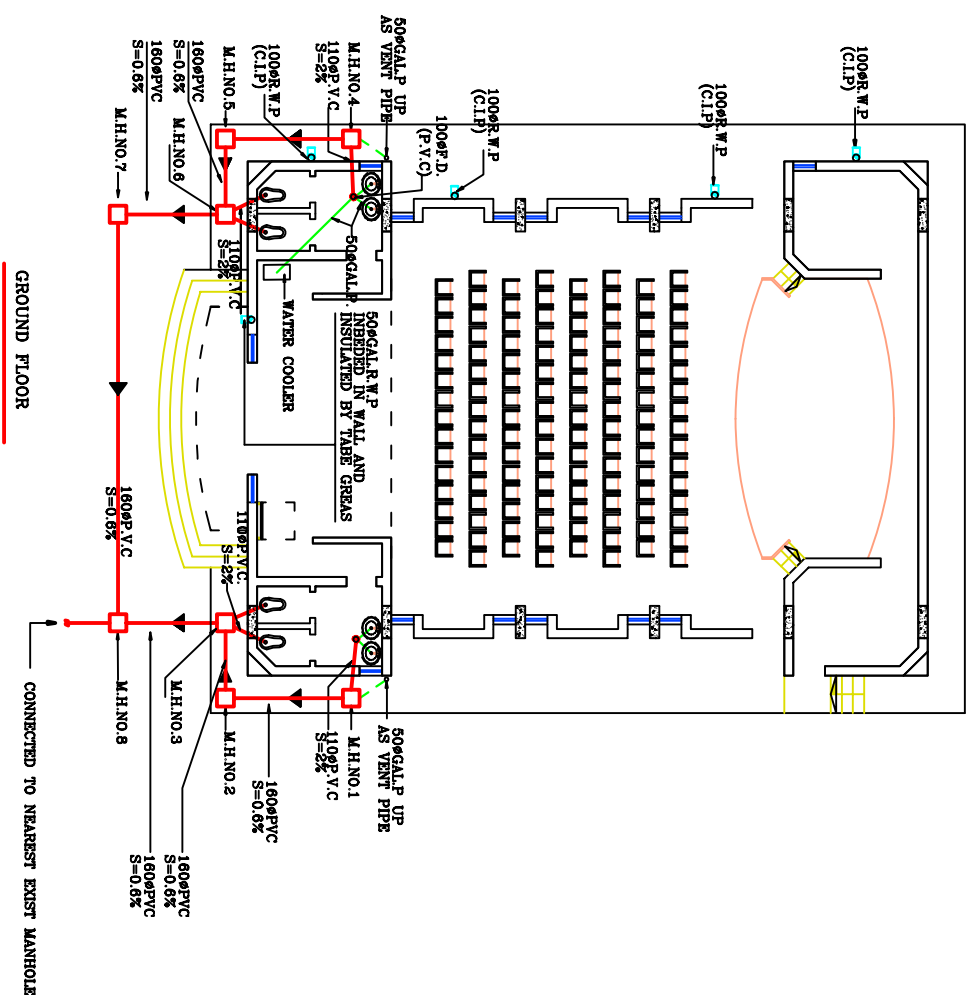
## Laboratories Building water and sewage plan

designed	project manage
AMMAR BAHJAT	

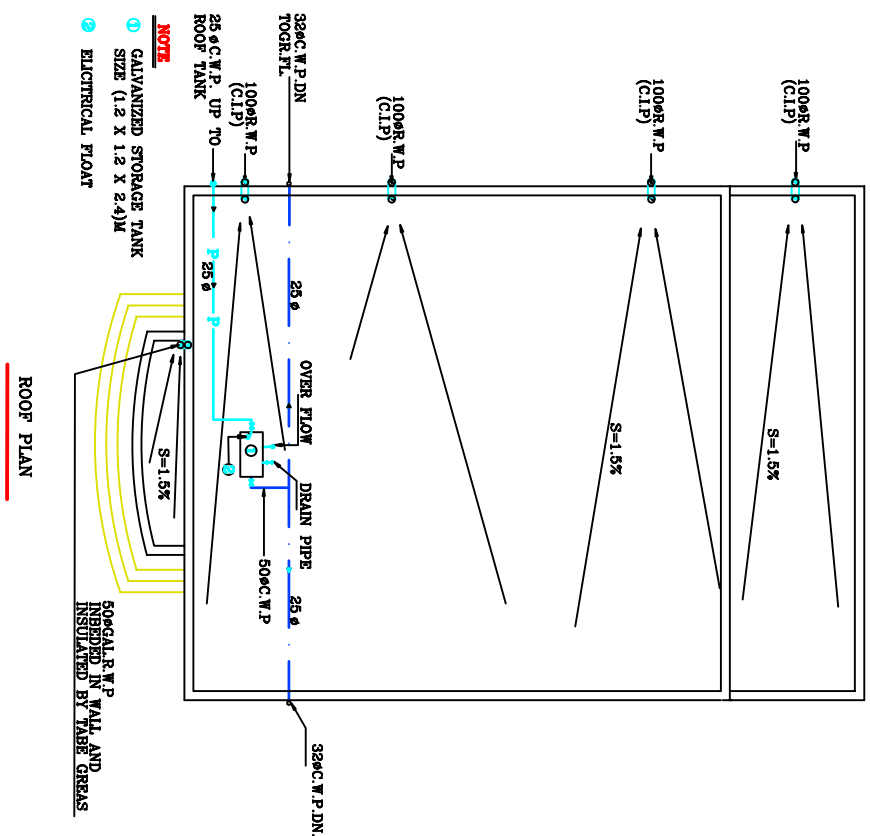
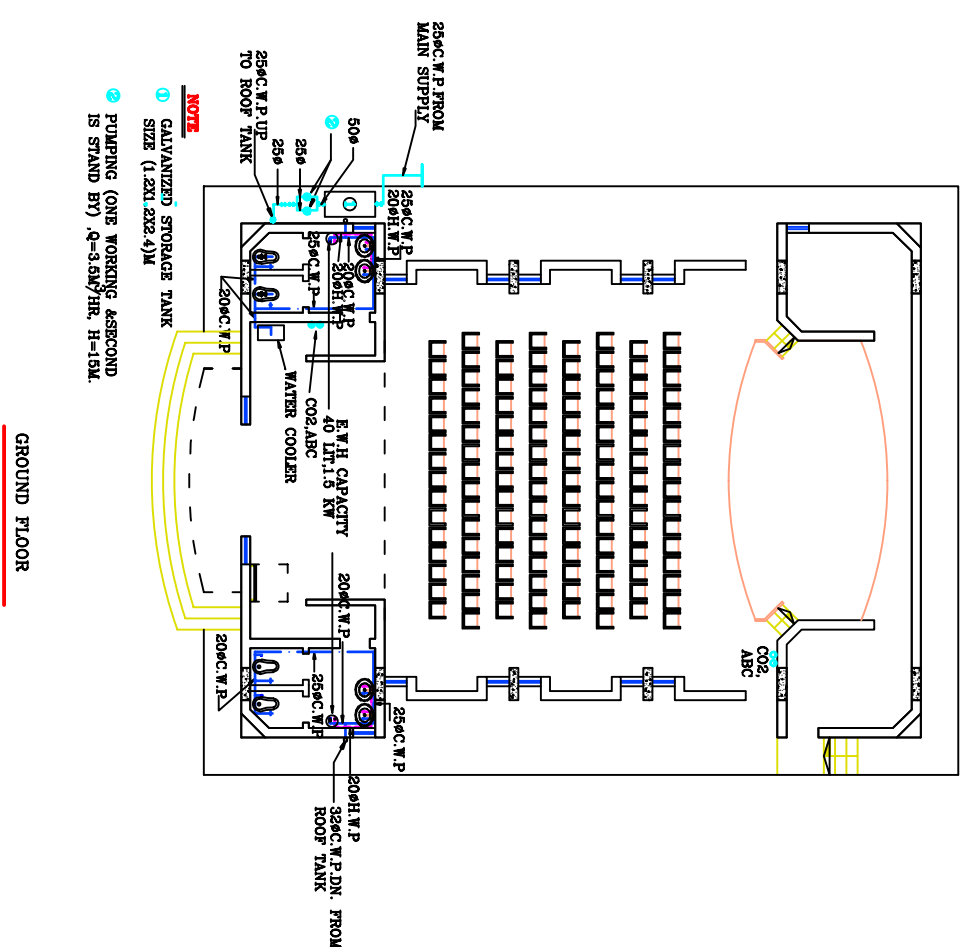
checked	scale	date
SAVSAN SHATTI	1 / 100	10/10/2004

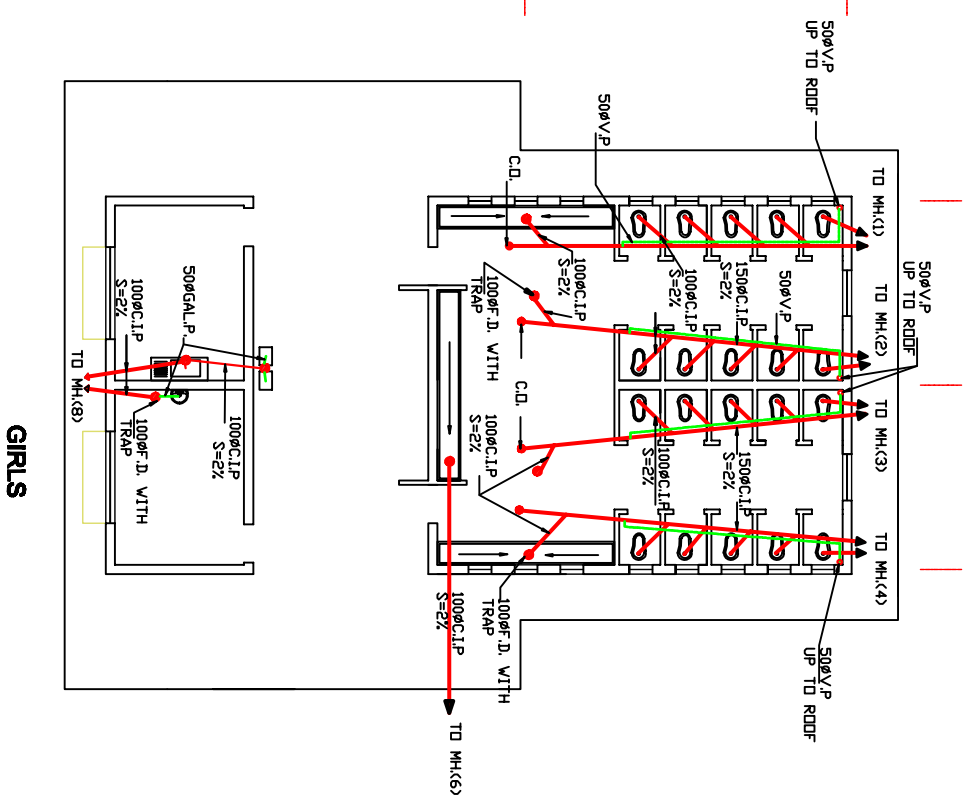
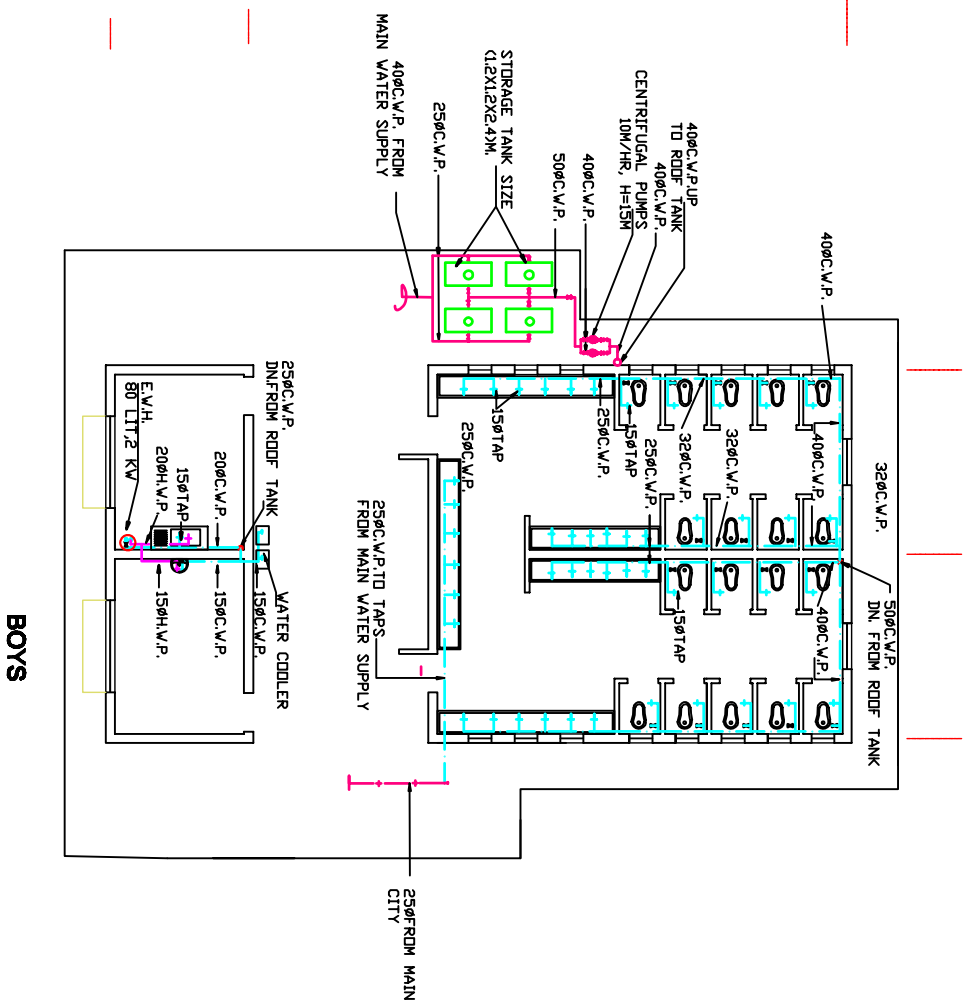
drawn	job no.	sheet no.
MULLA A.		

approved	SAN : 5
----------	---------



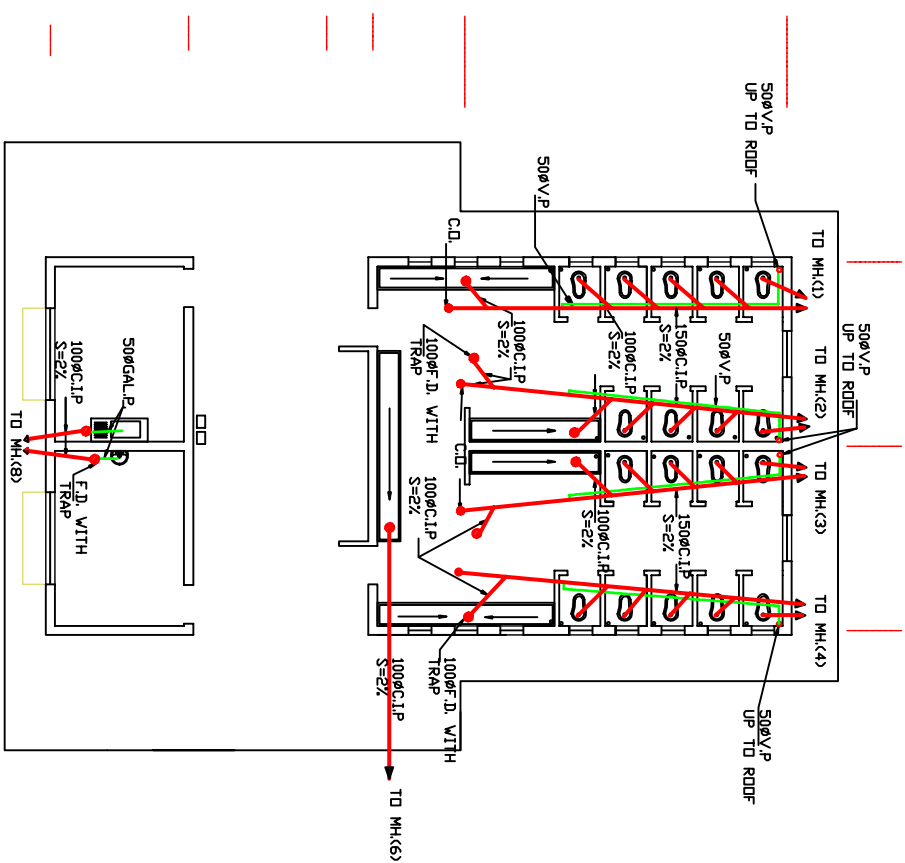
M.H.NO.	TOP LEVEL	INLET LEVEL	OUTLET LEVEL	DEPTH ( M )	M.H.SIZE ( CM )
1	+0.30		-0.30	0.60	50X50
2	+0.30	-0.32	-0.34	0.64	50X50
3	+0.30	-0.35	-0.37	0.67	50X50
4	+0.30		-0.30	0.60	50X50
5	+0.30	-0.32	-0.34	0.64	50X50
6	+0.30	-0.35	-0.37	0.67	50X50
7	0.00	-0.39	-0.41	0.41	50X50
8	0.00	-0.47	-0.50	0.50	50X50

[illegible]

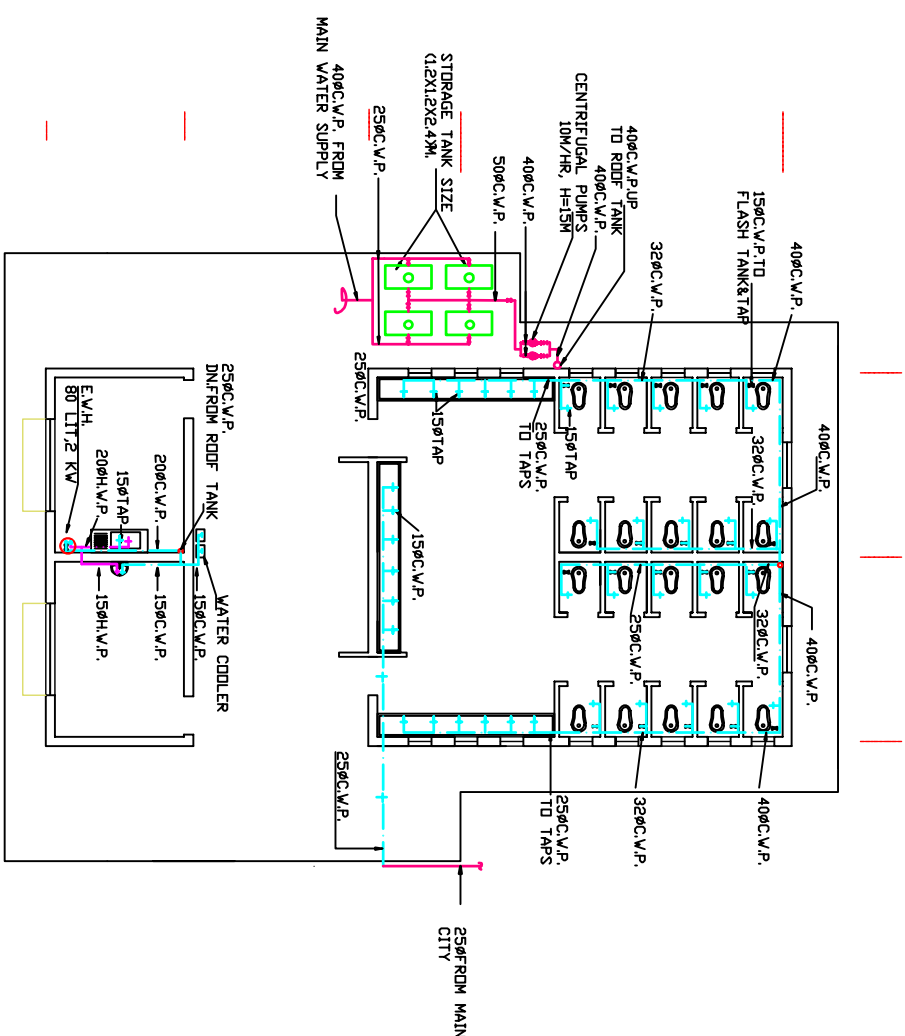


WATER SUPPLY LAY-OUT IN TOILET NO.(2)

DRAINAGE LAY-OUT IN TOILET NO.(2)



## Boys



**GIRLS**

## WATER SUPPLY LAY-OUT IN TOILET NO.(2)

DRAINAGE LAY-OUT IN TOILET NO.(2)

[illegible]

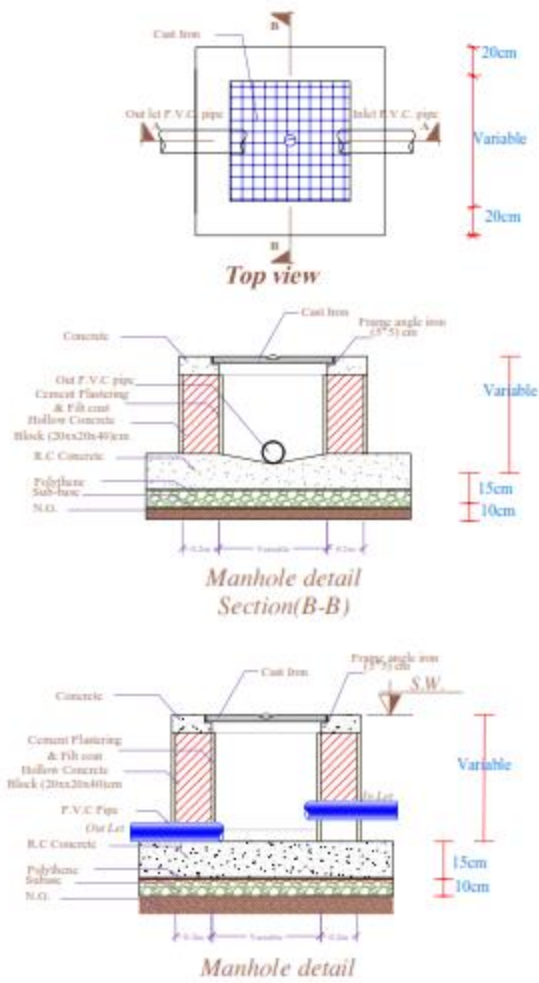
**المركز الوطني للمدن والبيئة**  
MINISTRY OF CONSTRUCTION & HOUSING  
NATIONAL CENTER FOR ENGINEERING CONSULTANCY

**Typical secondary school  
18 classrooms**

drawing title  
**W. C. plans**  
**water and sewage plan**

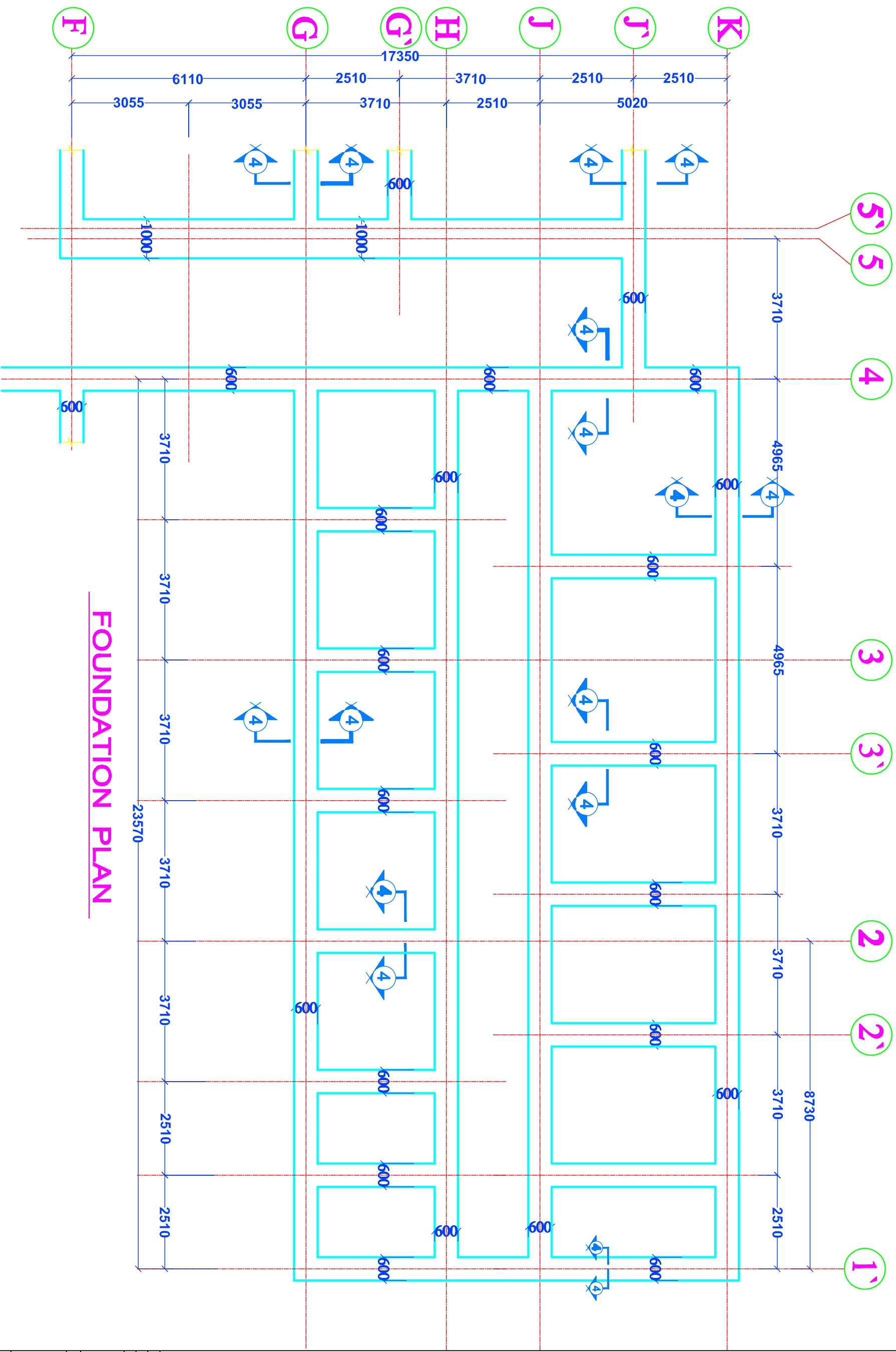
designed	AMMAR BAKHAT	project manager
checked	SAMSAM SHAITI	scale 1 / 100
drawn	MULLA A .	job no. 10/10/2000
approved		sheet n SNI : 2





**Manhole Drawing**

**NOTES:**  
**ASSUMED BEARING**  
**CAPACITY : 8 TON/m**

[illegible]