

# UNDP Darfur Development Strategy

Promote Reconciliation and Coexistence for Sustainable Peace in Darfur

## DARFUR REGION RURAL COURT MODEL

### RURAL COURT - STANDARD MODEL

October 2016

*Bahauddin Ibrahim*

+249 (0) 9 112 13 334 / +249 (0) 1 141 97 005  
[bahaalim@gmail.com](mailto:bahaalim@gmail.com)



#### FINISHING SCHEDULE

CEILING FINISHES	
1	US ZINC SHEET (0.5MM)
2	OIL PAINT
3	FABRIC TEXTILE SHEETS
WALL FINISHES	
1	CERAMIC TILES
2	MARBLE TILES
3	3 COATS OF POMASTIC ON C/S PLASTER
4	ROUGH PLASTER
SKIRTING	
1	TERAIZZO TILES
2	CERAMIC TILES
3	MARBLE TILES
4	GRANITE TILES
FLOOR FINISHES	
1	TERAIZZO TILES
2	CERAMIC TILES
3	FAIR FACE CEMENT/ SAND FINISH ON PC

CEILING FINISHES 

C	W
F	S

 WALL FINISHES

FLOOR FINISHES 

C	W
F	S

 SKIRTING

#### ELECTRICAL KEY

S	Description
	WALL MOUNTED KDK FAN
	FAN REGULATOR
	SOCKET OUTLET
	13A SOCKET OUTLET
	WALL MOUNTED LAMP
	DOUBLE ONE WAY SWITCH

**UN Darfur Fund**  
Promote Reconciliation  
and Coexistence  
for Sustainable  
Peace in Darfur  
Foundational and Short Term Activities (FaST)

**STANDARD MODEL**  
**RURAL COURT**

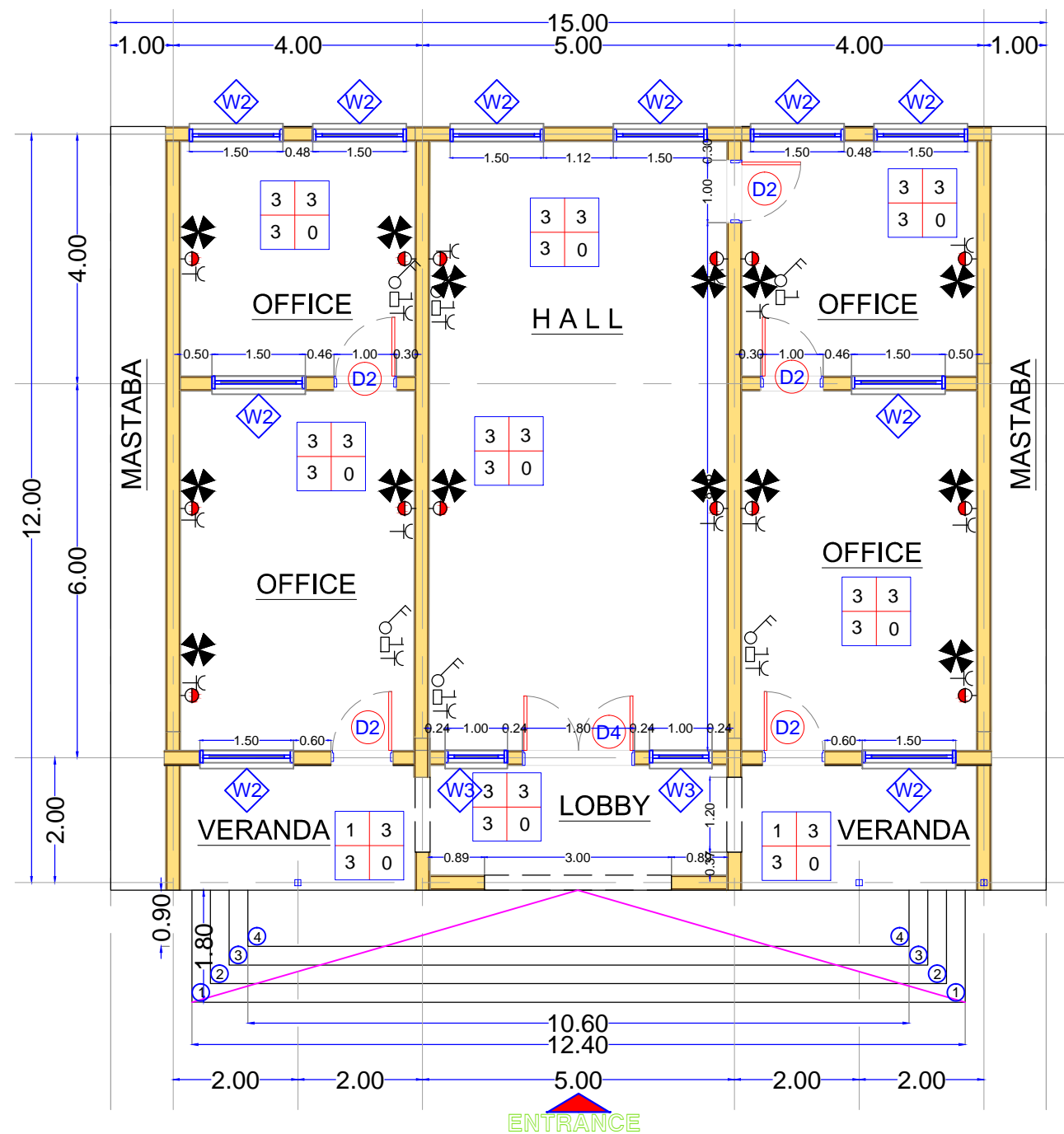
Lead Agency:  
UNDP (with UN Women)

**MODEL (B)**

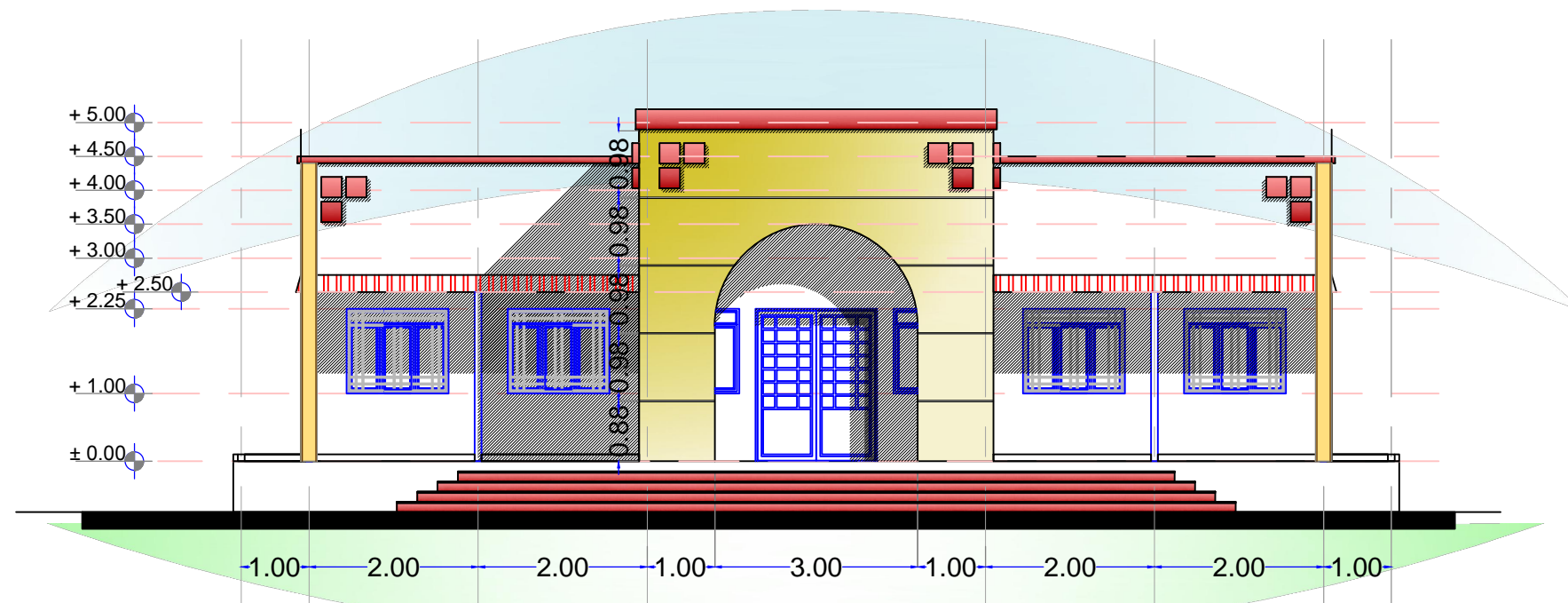
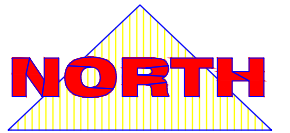
FEB  
2016

Design By:  
**Bahauddin Ibrahim**  
+249 (0) 9 112 13 3347 +249 (0) 1 141 97 005  
bahauddin@gmail.com

**A1**

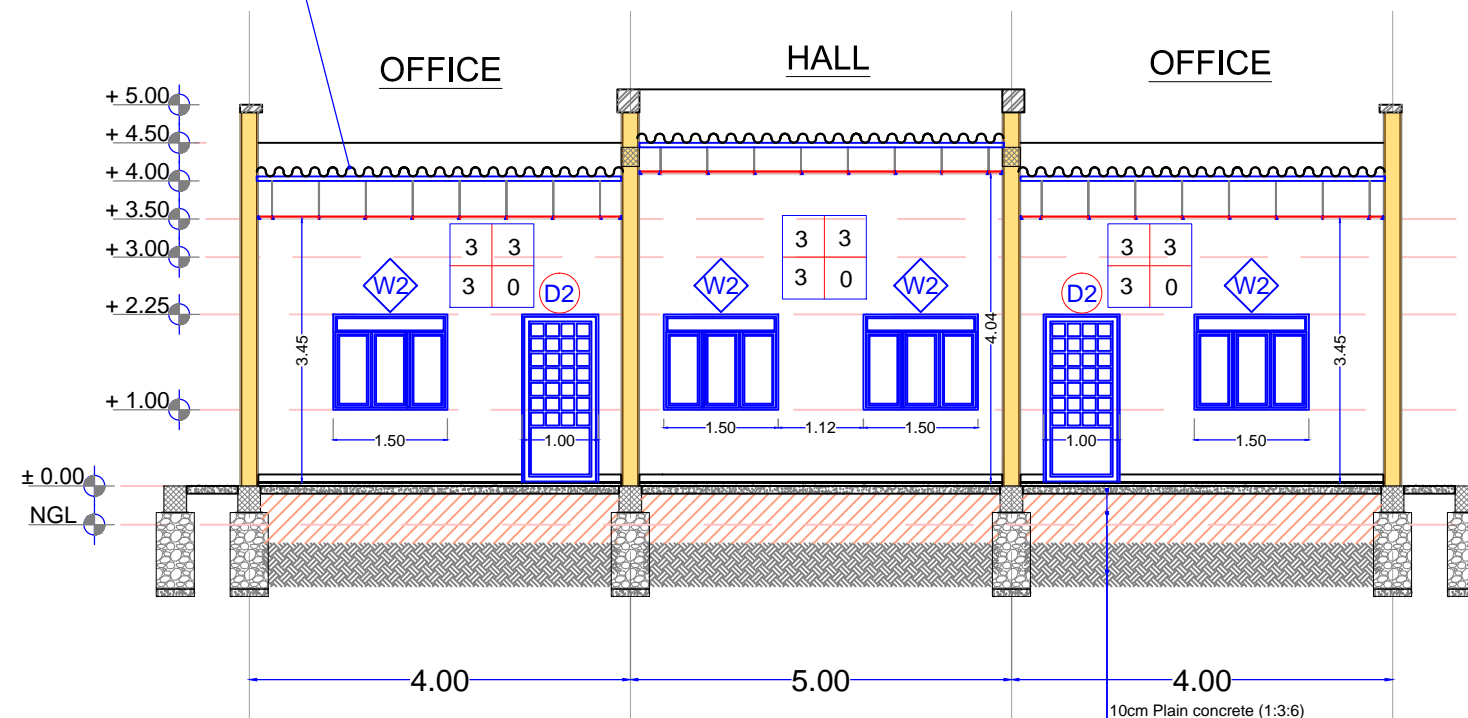


GROUND FLOOR PLAN LAYOUT  
**Main Building**  
Scale 1:100 A3



ELEVATION MAIN VIEW  
Main Building

0.4 MM CORRUGATED SHEET (UK)  
FIXED TO PURLING BY "GHANJY" WITH RUBBER WASHER,  
INSERTED IN WALL BY 10 CM.



MAIN OFFICES  
DETAILED SECTION (AA)

#### FINISHING SCHEDULE

CEILING FINISHES	
1	US ZINC SHEET (0.5MM)
2	OIL PAINT
3	FABRIC TEXTILE SHEETS
WALL FINISHES	
1	CERAMIC TILES
2	MARBLE TILES
3	3 COATS OF POMASTIC ON C/S PLASTER
4	ROUGH PLASTER
SKIRTING	
1	TERAIZZO TILES
2	CERAMIC TILES
3	MARBLE TILES
4	GRANITE TILES
FLOOR FINISHES	
1	TERAIZZO TILES
2	CERAMIC TILES
3	FAIR FACE CEMENT/ SAND FINISH ON PC

CEILING FINISHES 

C	W
F	S

 WALL FINISHES  
FLOOR FINISHES 

C	W
F	S

 SKIRTING

↑ SLOPE DIRECTION 1:100

#### ELECTRICAL KEY

S	Description
⬤	56 INCH CEILING KDK FAN
□	FAN REGULATOR
⌋	SOCKET OUTLET
⌋ 13A	13A SOCKET OUTLET
⬤	WALL MOUNTED LAMP
⌋	DOUBLE ONE WAY SWITCH

**UN Darfur Fund**  
Promote Reconciliation  
and Coexistence  
for Sustainable  
Peace in Darfur  
Foundational and Short Term Activities (FaST)

**STANDARD MODEL**  
**RURAL COURT**

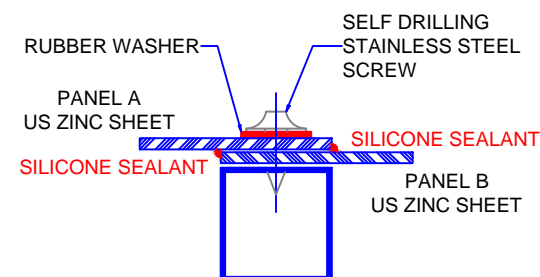
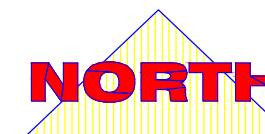
Lead Agency:  
**UNDP (with UN Women)**

**MODEL (B)**

FEB  
2016

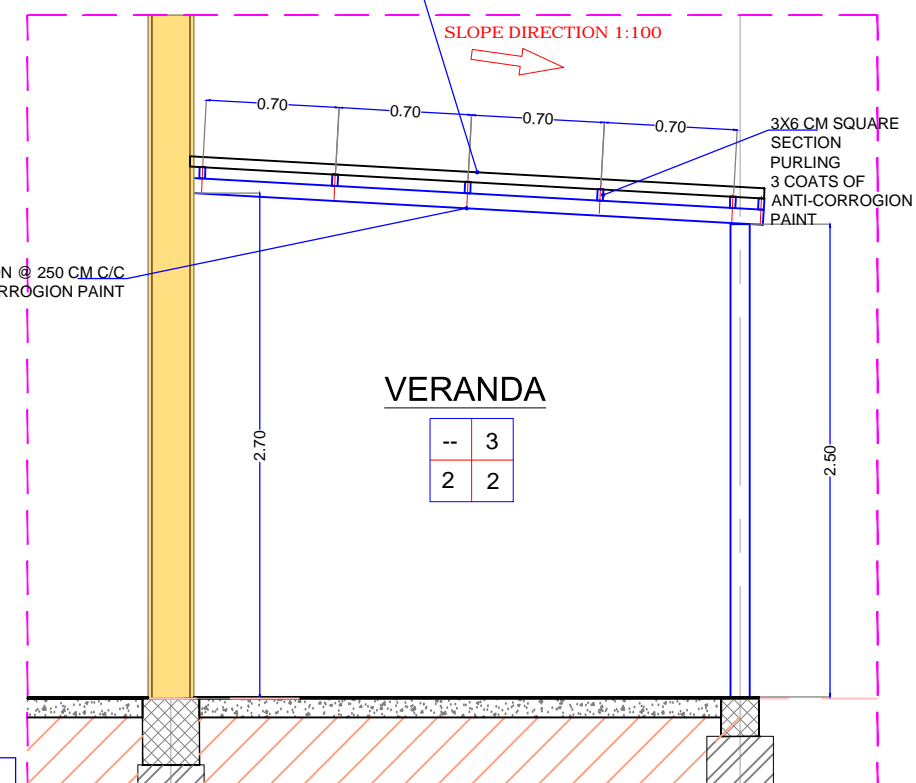
Design By:  
**Bahauddin Ibrahim**  
+249 (0) 9 112 13 3547 +249 (0) 1 141 97 005  
bahauddin@gmail.com

**A2**

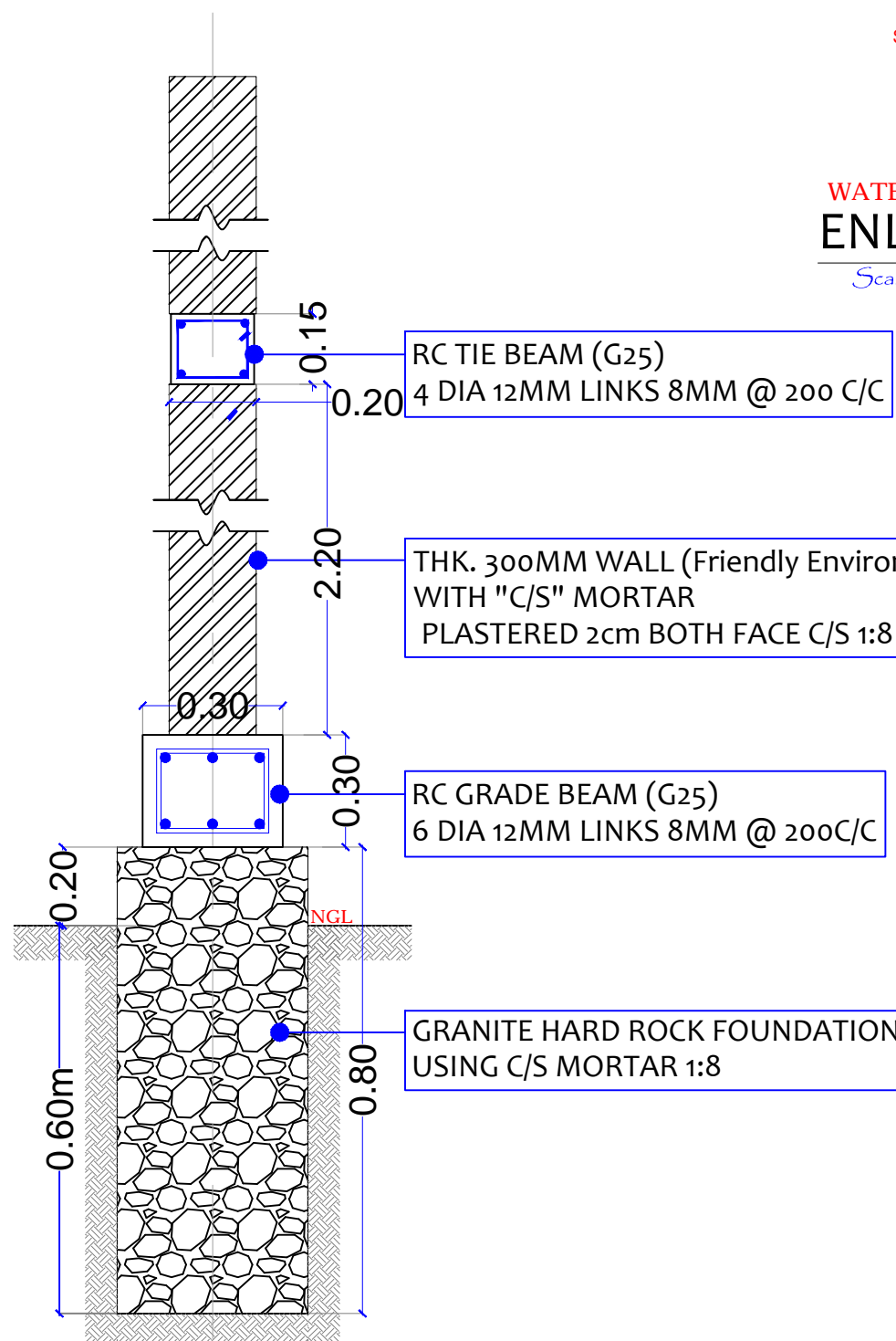


**WATER TIGHT  
ENLARGED DETAIL**  
Scale NTS

0.4 MM UK CORRUGATED SHEET FIXED TO PURLING BY  
"GHANJY" SCREWS WITH RUBBER WASHER,  
INSERTED IN WALL BY 10 CM.

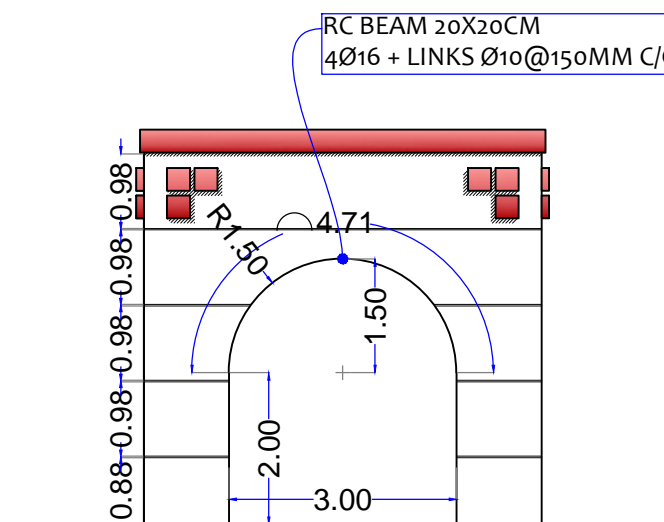


**VERANDA SECTION**  
Scale NTS



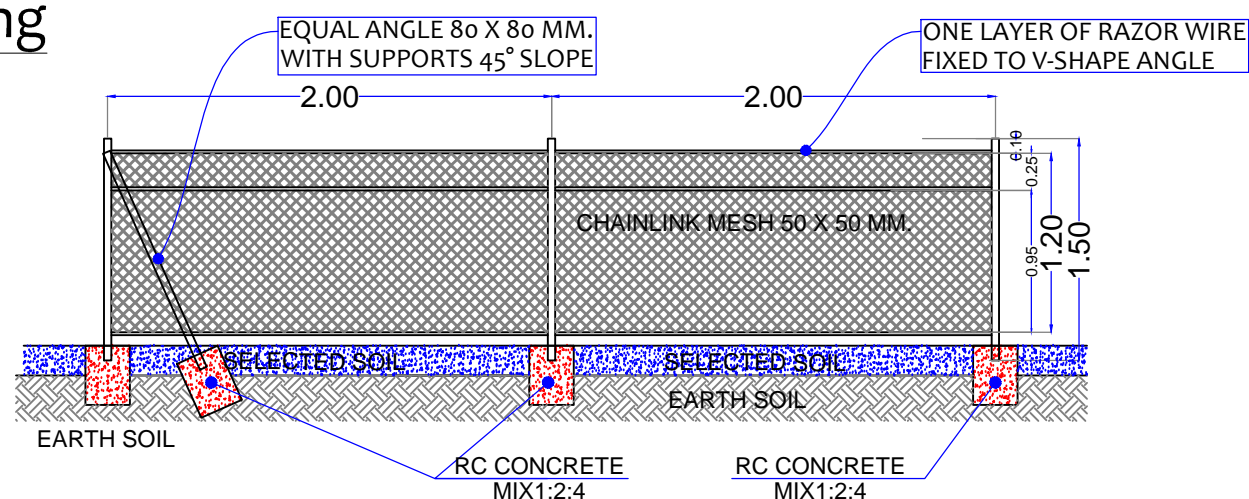
Typical Sections

**Sectional Details**  
Scale NTS A3



ELEVATION MAIN VIEW

**Main Building**



**FENCE TYPICAL DETAILS**  
Scale NTS A3

**UN Darfur Fund**  
Promote Reconciliation  
and Coexistence  
for Sustainable  
Peace in Darfur  
Foundational and Short Term Activities (FaST)

**STANDARD MODEL  
RURAL COURT**  
FOR TENDERING

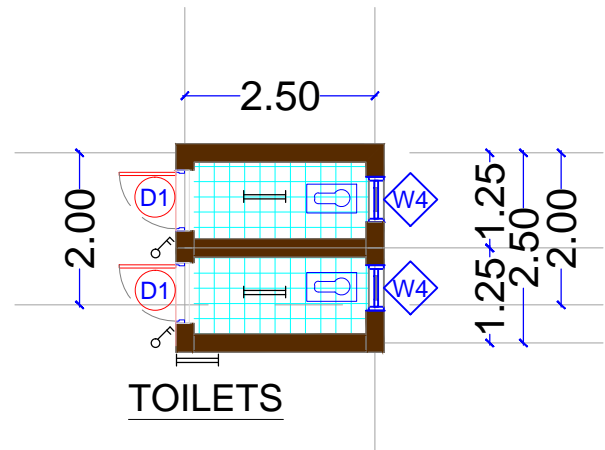
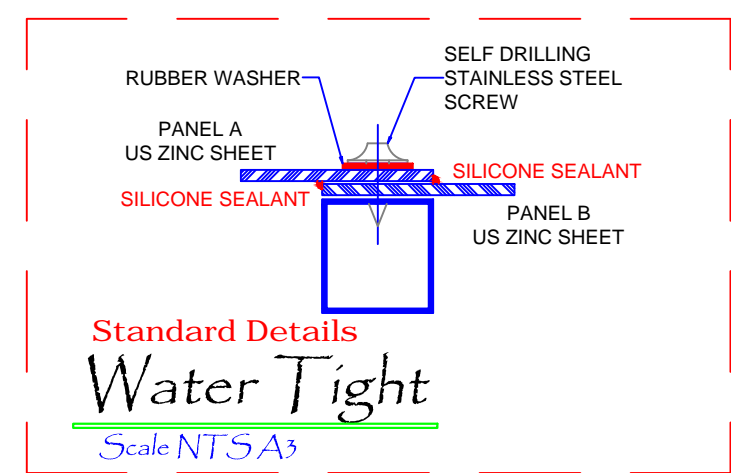
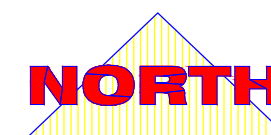
Lead Agency:  
UNDP (with UN Women)

**MODEL (B)**

FEB  
2016

Design By:  
**Bahauddin Ibrahim**  
+249 (0) 9 112 13 3347 +249 (0) 1 141 97 005  
bahauddin@un.org

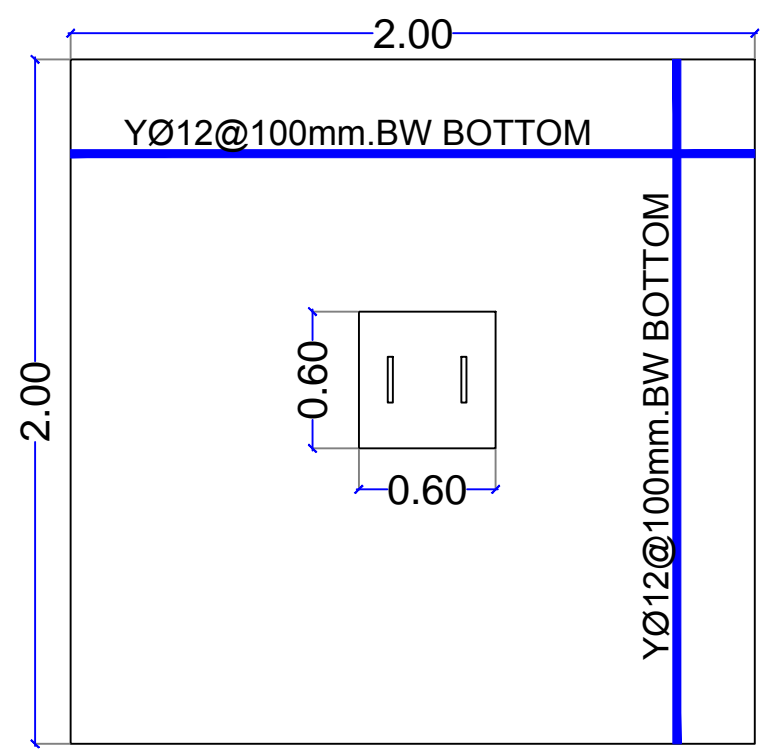
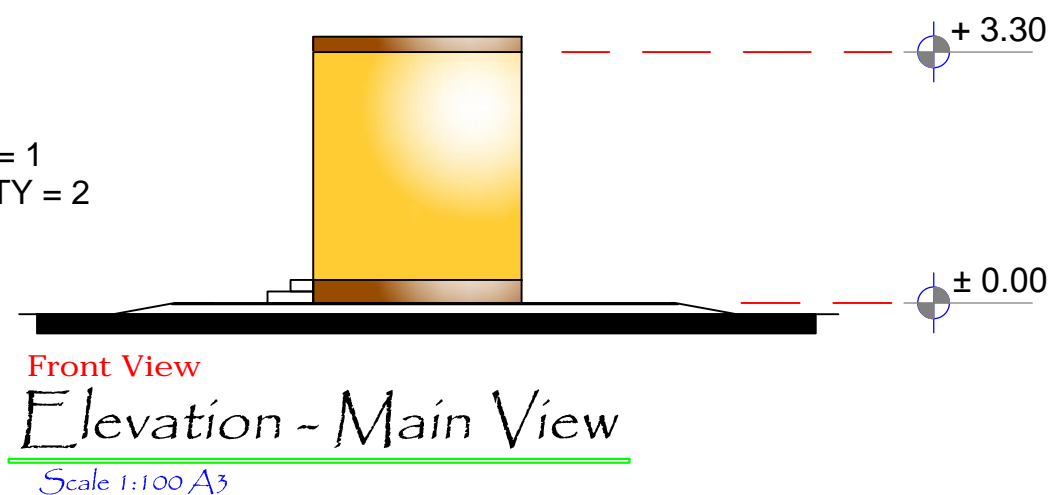
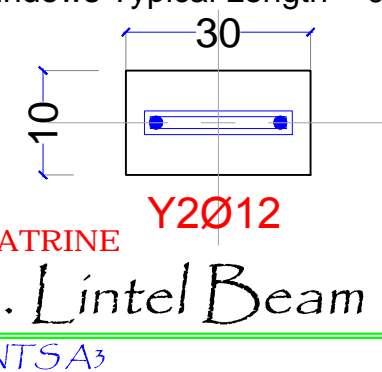
**A3**



QUANTITIES : (FOR LATRINE ROOF)

6 m length 3 X 6 Rectangular Steel Tube	3
6 m length 4 X 8 Rectangular Steel Tube	0
6 m. length 3 inch dia. steel pipe	0
US Zinc Sheet 6 m. Length	9 Sq.M.
Self Drilling Stainless Steel Screws	500

Above Doors Typical Length = 2.50 m. QTY = 1  
Above Windows Typical Length = 0.80 m. QTY = 2



FOR LINTELS' BEAMS

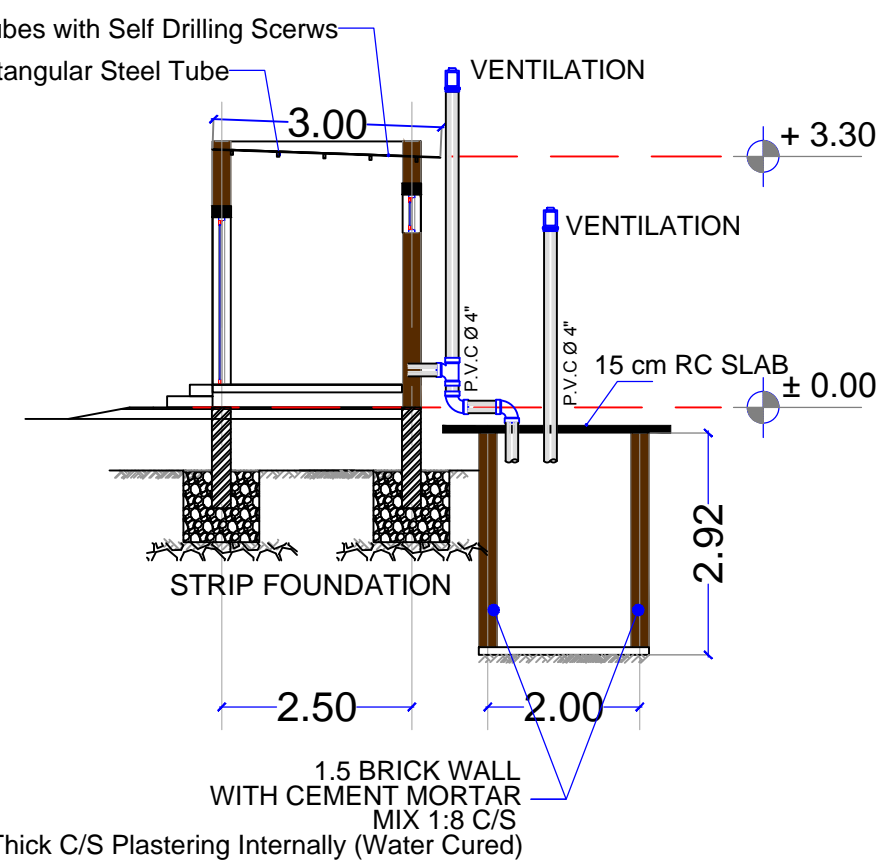
Y Ø 12 LENGTH = 12 M. QTY = 1 BAR(12M)
Y Ø 8 LENGTH = 12 M. QTY = 2 BAR(12M)
Y12 MM = 0.011 TON .

SLAB THICKNESS = 10 CM

BOTTOM STEEL :

Y Ø 12 QTY = 7 BAR(12M)
Y12 MM = 0.075 TON .

PLAN  
Latrine Pit RC Slab Layout  
Scale NTSA3



Latrine  
Detailed Side Section  
Scale 1:100 A3

UN Darfur Fund  
Promote Reconciliation  
and Coexistence  
for Sustainable  
Peace in Darfur  
Foundational and Short Term Activities (FaST)

MULTI-PURPOSE  
LATRINE  
FOR TENDERING

Lead Agency:  
UNDP (with UN Women)

LATRINE UNIT  
FEB 2016

Design By:  
Bahauddin Ibrahim  
+249 (0) 9 112 13 3347 +249 (0) 1 141 97 005  
bahauddin@ibrahim.com

A4

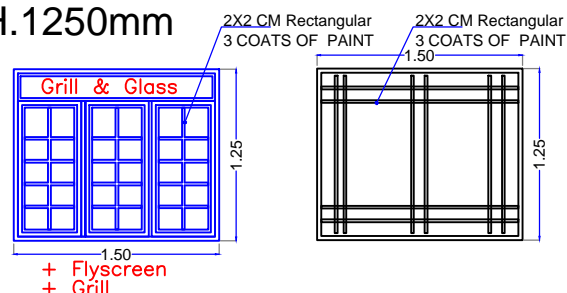


# WINDOWS

SAMPLE TO BE APPROVED.

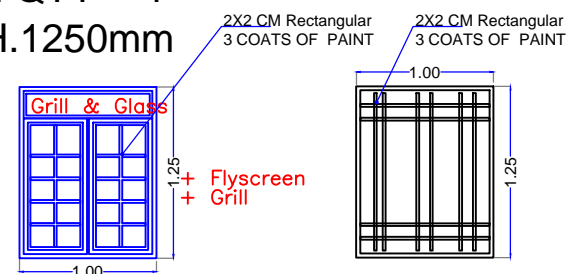
**W2** Painted Steel QTY = 5  
Width1500xH.1250mm

Hinged Window  
Flyscreen Mesh  
6mm Glaze  
Frame (4X8 Tube)  
Window Leaf (3X6 Tube)  
Grill (2X2 Tube)  
3Handle & 6Latch



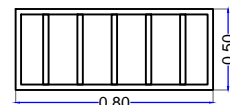
**W3** Painted Steel QTY = 4  
Width1500xH.1250mm

Hinged Window  
Flyscreen Mesh  
6mm Glaze  
Frame (4X8 Tube)  
Window Leaf (3X6 Tube)  
Grill (2X2 Tube)  
2 Handle & 4 Latch



**W4** Painted Steel QTY = 2  
Width800xH.500mm

Hinged Window  
Grill (2X2 Tube)

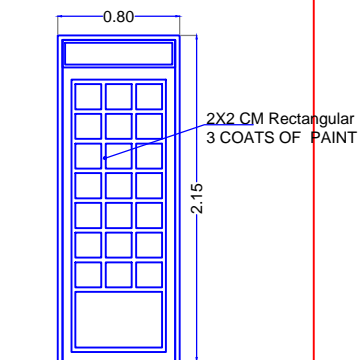


# DOORS

SAMPLE TO BE APPROVED.

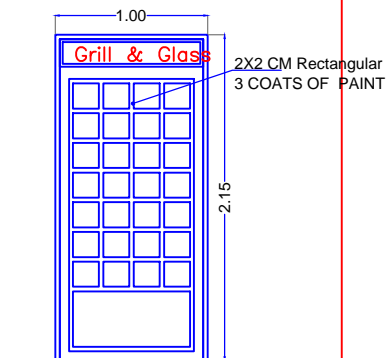
**D1** Painted Steel  
Width800xH.2150mm

Hinged STEEL DOOR  
NO Glaze @ Door Leaf  
Frame (4X8 Tube)  
Door Leaf (3X6 Tube)  
3 Hinges Each Leaf  
1Handle & 2 Latch



**D2** Painted Steel QTY = 6  
Width1000xH.2150mm

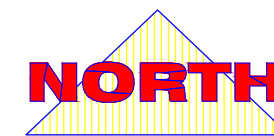
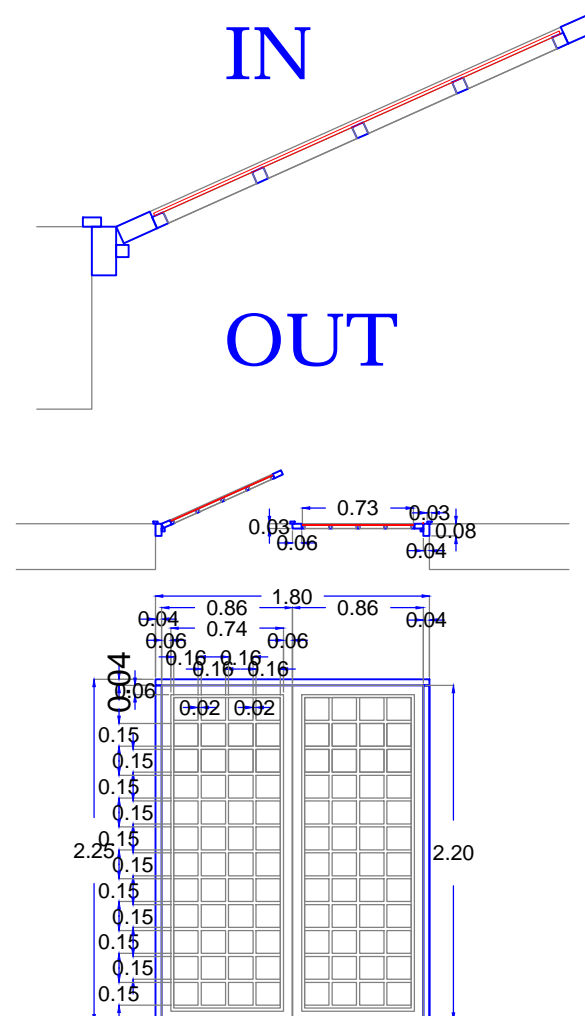
Hinged STEEL DOOR  
NO Glaze @ Door Leaf  
Frame (4X8 Tube)  
Door Leaf (3X6 Tube)  
3 Hinges Each Leaf  
1Handle & 2 Latch



**D4** Painted Steel QTY = 1  
Width1800xH.2150mm

Hinged STEEL DOOR

LEXAN @ Door Leaf  
Frame (4X8 Tube)  
Door Leaf (3X6 Tube)  
3 Hinges Each Leaf  
1Handle & 2 Latch



UN Darfur Fund  
Promote Reconciliation  
and Coexistence  
for Sustainable  
Peace in Darfur  
Foundational and Short Term Activities (FaST)

STANDARD MODEL  
RURAL COURT  
FOR TENDERING

Lead Agency:  
UNDP (with UN Women)

MODEL (B)

FEB  
2016

Design By:  
Bahauddin Ibrahim  
+249 (0) 9 112 13 3347 +249 (0) 1 141 97 005  
bahauddin@gmail.com

A5

MAIN OFFICES  
**DOORS & WINDOWS**  
Scale NTS