



UNDP, PHNOM PENH
DETAIL DESIGN 2017-05-04





HISTORICAL BACKGROUND

UNDP has been in Cambodia for more than 50 years now, operating from 1958 to 1975, resuming in a limited capacity in 1980 contributing to emergency relief operations, and formally establishing its offices in Phnom Penh in 1994 with the signature of the Standard Basic Assistance Agreement (SBAA). We are currently implementing a new Country Programme Action Plan 2016-2018, which has been endorsed by the Letter of Agreement between the Country Office and the Royal Government of Cambodia

OVERVIEW

What We Do

As Cambodia transitions into the next stage of development, UNDP will foster partnerships that address the impediments to sustainable development, particularly in the areas of human capital formation and economic vulnerability, critical for LDC graduation. UNDP will be a partner for policy, knowledge and innovation through evidence-based research for articulating policy options, and mobilizing knowledge and resources for policy choices that better people's lives. UNDP will actively pursue south-south and trilateral collaboration as a modality of assistance.

Our Goals

The programme priorities aim to build pathways out of poverty and expand the scope for public action, if Cambodia is to sustain poverty escapes, stop impoverishment, and tackle chronic poverty. It also reflects the recommendations of the MTR and the Governance outcome evaluation to engage in programming built around the "policy cycle" and move from project-driven policy support to policy-driven projects with a well-established link to national priorities for building evidence, fostering policy dialogue and enhancing policy design and effectiveness. Priority issues are to be determined jointly with government, within the framework of the country programme.



Women in discussion

Women in countryside discuss together to make up a regulation to use water distributed from a solar panel pumping station in their village. (Photo: UNDP Cambodia)more

Our stories



An advisory provision conducted by the Provincial Association in Battambang Province (Photo: @AGES Project)

Supporting local councils and promoting local democracy

On 24th February 2018, the general secretary of the Associations of Sub-National Administration Councils (ASAC-S) and the president of the National League of Local Councils (NLC)more >



People clean the solar panels used to recharge batteries for electricity.

Solar panels bring lights to rural homes

KAMPONG CHHNANG – Using generator to recharge car batteries is the common method of how rural households that still remain off the national grid get electricity.more >

DETAIL DESIGN
ORGANIZATION ANALYSIS



DETAIL DESIGN
LOCATION (90)



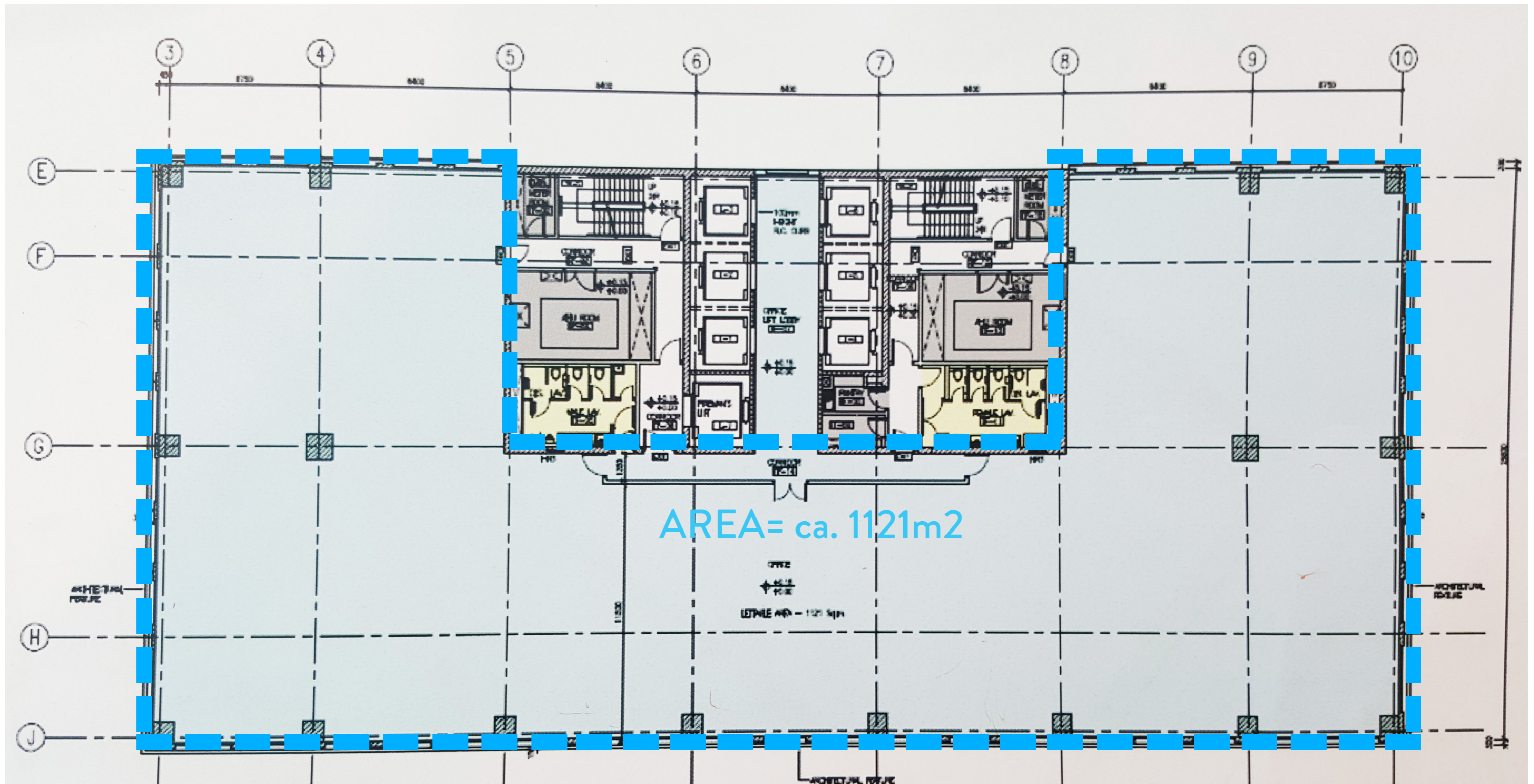
DETAIL DESIGN

SITE- PHOTO-ANALYSIS

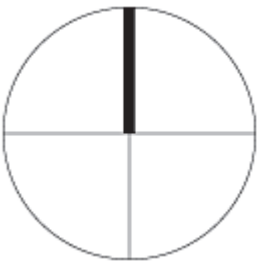


DETAIL DESIGN

SCOPE OF THE STUDY-VI floor - plan provided by UNDP



DETAIL DESIGN
SITE ANALYSIS



Sunset

Wat Phnom

WEST SUNLIGHT

EAST SUNLIGHT

Mekong river

Royal Palace

-suspended ceiling area with incorporated and
centrilized AC and lighting system
-raised technical floor for installations

5th floor, area= ca. 1121 m2

main office entrance

secondary office entrance

emergency route

Viewpoints analysis

Landlords suggested server room location

LIFTS: PUBLIC/ TECHNICAL

TECHNICAL

TOILETS(+HANDICAPPED)

TECHNICAL



LAYOUT



DETAIL DESIGN-LAYOUT PART A

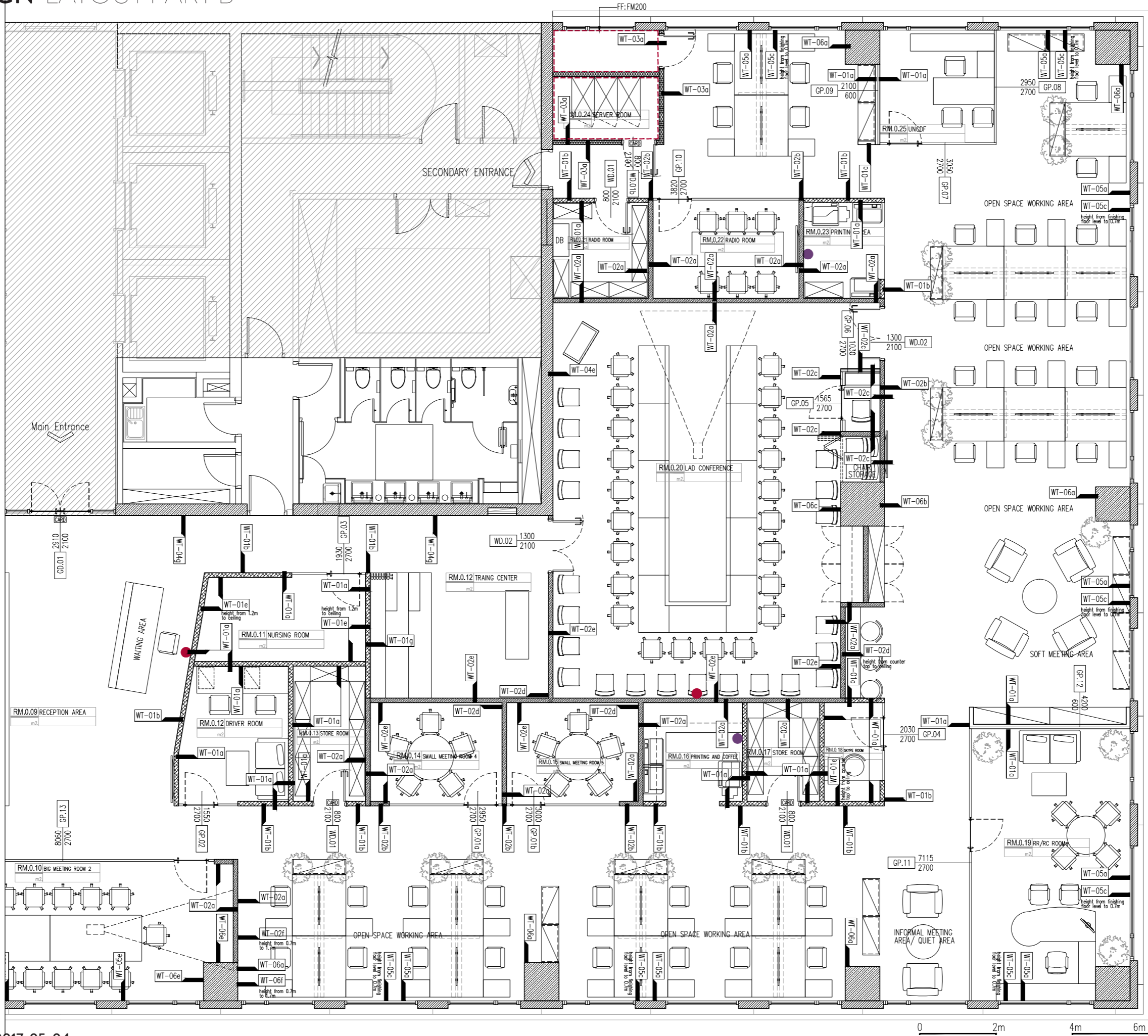


LEGEND	
SYMBOLS	DESCRIPTION
	LOGO LOCATION
	PAPER/TRASH LOCATION
	KEY CARD ACCESS SYNCHRONIZED SYSTEM

LEGEND : WALL TYPE AND WALL FINISHES	
CODE	DESCRIPTION
WT.01a	GYPSUM WALL WITH WHITE PAINTED FINISHING
WT.01b	GYPSUM WALL WITH WOOD LAMINATE TEXTURE FINISHING (LIGHT OAK)
WT.01c	GYPSUM WALL WITH LIGHT GREY PAINTED FINISHING
WT.01d	GYPSUM WALL WITH GLASS WALL FINISHING
WT.01e	GYPSUM WALL WITH LIGHT GREY FABRIC FINISHING
WT.01f	GYPSUM WALL WITH WHITE BOARD FINISHING
WT.01g	GYPSUM WALL WITH STICKER FINISHING
WT.01h	GYPSUM WALL WITH WOOD LAMINATED (AOK)
WT.02a	SOUND INSULATED GYPSUM WALL WITH WHITE PAINTED FINISHING
WT.02b	SOUND INSULATED GYPSUM WALL WITH WOOD LAMINATE TEXTURE FINISHING (LIGHT OAK)
WT.02c	SOUND INSULATED GYPSUM WALL WITH LIGHT GREY PAINTED FINISHING
WT.02d	SOUND INSULATED GYPSUM WALL WITH GLASS WALL FINISHING
WT.02e	SOUND INSULATED GYPSUM WALL WITH LIGHT GREY FABRIC FINISHING
WT.02f	SOUND INSULATED GYPSUM WALL WITH WHITE BOARD FINISHING
WT.03a	FIRE RATED GYPSUM WALL WITH WHITE PAINTED FINISHING
WT.04a	EXISTING CONCRETE WALL WITH WHITE PAINTED FINISHING
WT.04b	EXISTING CONCRETE WALL WITH WOOD LAMINATE TEXTURE FINISHING (LIGHT OAK)
WT.04c	EXISTING CONCRETE WALL WITH LIGHT GREY FABRIC FINISHING
WT.04d	EXISTING CONCRETE WALL WITH STICKER FINISHING
WT.05a	EXISTING BRICK WALL WITH WHITE PAINTED FINISHING
WT.05c	EXISTING BRICK WALL WITH LIGHT GREY PAINTED FINISHING
WT.05e	EXISTING BRICK WALL WITH LIGHT GREY FABRIC FINISHING
WT.06a	EXISTING COLUMN WITH WHITE PAINTED FINISHING
WT.06b	EXISTING COLUMN WITH WOOD LAMINATED (LIGHT OAK) FINISHING
WT.06c	EXISTING COLUMN WITH LIGHT GREY PAINTED FINISHING
WT.06e	EXISTING COLUMN WITH LIGHT GREY FABRIC FINISHING
WT.06f	EXISTING COLUMN WITH WHITE BOARD FINISHING



DETAIL DESIGN-LAYOUT PART B



LEGEND	
SYMBOLS	DESCRIPTION
	LOGO LOCATION
	PAPER/TRASH LOCATION
	KEY CARD ACCESS SYNCHRONIZED SYSTEM

LEGEND : WALL TYPE AND WALL FINISHES	
CODE	DESCRIPTION
WT.01a	GYPSUM WALL WITH WHITE PAINTED FINISHING
WT.01b	GYPSUM WALL WITH WOOD LAMINATE TEXTURE FINISHING (LIGHT OAK)
WT.01c	GYPSUM WALL WITH LIGHT GREY PAINTED FINISHING
WT.01d	GYPSUM WALL WITH GLASS WALL FINISHING
WT.01e	GYPSUM WALL WITH LIGHT GREY FABRIC FINISHING
WT.01f	GYPSUM WALL WITH WHITE BOARD FINISHING
WT.01g	GYPSUM WALL WITH STICKER FINISHING
WT.01h	GYPSUM WALL WITH WOOD LAMINATED (AOK)
WT.02a	SOUND INSULATED GYPSUM WALL WITH WHITE PAINTED FINISHING
WT.02b	SOUND INSULATED GYPSUM WALL WITH WOOD LAMINATE TEXTURE FINISHING (LIGHT OAK)
WT.02c	SOUND INSULATED GYPSUM WALL WITH LIGHT GREY PAINTED FINISHING
WT.02d	SOUND INSULATED GYPSUM WALL WITH GLASS WALL FINISHING
WT.02e	SOUND INSULATED GYPSUM WALL WITH LIGHT GREY FABRIC FINISHING
WT.02f	SOUND INSULATED GYPSUM WALL WITH WHITE BOARD FINISHING
WT.03a	FIRE RATED GYPSUM WALL WITH WHITE PAINTED FINISHING
WT.04a	EXISTING CONCRETE WALL WITH WHITE PAINTED FINISHING
WT.04b	EXISTING CONCRETE WALL WITH WOOD LAMINATE TEXTURE FINISHING (LIGHT OAK)
WT.04c	EXISTING CONCRETE WALL WITH LIGHT GREY FABRIC FINISHING
WT.04d	EXISTING CONCRETE WALL WITH STICKER FINISHING
WT.05a	EXISTING BRICK WALL WITH WHITE PAINTED FINISHING
WT.05c	EXISTING BRICK WALL WITH LIGHT GREY PAINTED FINISHING
WT.05e	EXISTING BRICK WALL WITH LIGHT GREY FABRIC FINISHING
WT.06a	EXISTING COLUMN WITH WHITE PAINTED FINISHING
WT.06b	EXISTING COLUMN WITH WOOD LAMINATED (LIGHT OAK) FINISHING
WT.06c	EXISTING COLUMN WITH LIGHT GREY PAINTED FINISHING
WT.06e	EXISTING COLUMN WITH LIGHT GREY FABRIC FINISHING
WT.06f	EXISTING COLUMN WITH WHITE BOARD FINISHING

