



TECHNICAL DATA

MICROMATIC® STANDARD RESPONSE CONVENTIONAL SPRINKLER VK118 (K5.6)

The Viking Corporation, 210 N Industrial Park Drive, Hastings MI 49058

Telephone: 269-945-9501 Technical Services: 877-384-5464 Fax: 269-818-1680 Email: techsvcs@vikingcorp.com

Finish Suffix: Brass = A, Chrome = F, White Polyester = M-/W, Black Polyester = M-/B, and Black PTFE = N, Wax Coated = C, Wax Over Polyester = V-/W

Temperature Suffix (°F/°C): 135°/57° = A, 155°/68° = B, 175°/79° = D, 200°/93° = E, 212°/100° = M, 286°/141° = G, 360°/182° = H, OPEN = Z (PTFE only).

For example, sprinkler VK118 with a 1/2" thread, Brass finish and a 155 °F/68 °C temperature rating = Part No. 19383AB

Available Finishes And Temperature Ratings: Refer to Table 1.

Accessories: (Also refer to the "Sprinkler Accessories" section of the Viking data book.)

Sprinkler Wrenches:

A. Standard Wrench: Part No. 10896W/B (available since 2000)

B. Wrench for wax-coated sprinklers: Part No. 13577W/B** (available since 2006)

**A 1/2" ratchet is required (not available from Viking).

Sprinkler Cabinets:

A. Six-head capacity: Part No. 01724A (available since 1971)

B. Twelve-head capacity: Part No. 01725A (available since 1971)

4. INSTALLATION

Refer to appropriate NFPA Installation Standards.

5. OPERATION

During fire conditions, the heat-sensitive liquid in the glass bulb expands, causing the glass to shatter, releasing the pip cap and sealing spring assembly. Water flowing through the sprinkler orifice strikes the sprinkler deflector, forming a uniform spray pattern to extinguish or control the fire.

6. INSPECTIONS, TESTS AND MAINTENANCE

Refer to NFPA 25 for Inspection, Testing and Maintenance requirements.

7. AVAILABILITY

The Viking Micromatic® Standard Response Conventional Sprinkler VK118 is available through a network of domestic and international distributors. See The Viking Corporation web site for the closest distributor or contact The Viking Corporation.

8. GUARANTEE

For details of warranty, refer to Viking's current list price schedule or contact Viking directly.



TECHNICAL DATA

MICROMATIC® STANDARD RESPONSE CONVENTIONAL SPRINKLER VK118 (K5.6)

The Viking Corporation, 210 N Industrial Park Drive, Hastings MI 49058

Telephone: 269-945-9501 Technical Services: 877-384-5464 Fax: 269-818-1680 Email: techsvcs@vikingcorp.com

TABLE 1: AVAILABLE SPRINKLER TEMPERATURE RATINGS AND FINISHES

Sprinkler Temperature Classification	Sprinkler Nominal Temperature Rating ¹	Maximum Ambient Ceiling Temperature ²	Bulb Color
Ordinary	135 °F (57 °C)	100 °F (38 °C)	Orange
Ordinary	155 °F (68 °C)	100 °F (38 °C)	Red
Intermediate	175 °F (79 °C)	150 °F (65 °C)	Yellow
Intermediate	200 °F (93 °C)	150 °F (65 °C)	Green
High	286 °F (141 °C)	225 °F (107 °C)	Blue
Extra High	360 °F (182 °C)	300 °F (149 °C)	Mauve

Sprinkler Finishes: Brass, Chrome, White Polyester, Black Polyester, and Black PTFE

Corrosion-Resistant Coatings⁴: White Polyester, Black Polyester, and Black PTFE in all temperature ratings. Wax-Coated Brass and Wax over Polyester⁵ for sprinklers with the following temperature ratings:

155 °F (68 °C) Lt. Brown Wax

175 °F (79 °C) Brown Wax

200 °F (93 °C) Brown Wax

286 °F (141 °C) Dk. Brown Wax⁵

Footnotes

¹ The sprinkler temperature rating is stamped on the deflector.

² Based on NFPA-13. Other limits may apply, depending on fire loading, sprinkler location, and other requirements of the Authority Having Jurisdiction. Refer to specific installation standards.

³ Sprinklers of Ultra-High temperature rating are intended for use inside ovens, dryers, or similar enclosures with normal operating temperatures above 300 °F (149 °C). Where the ambient temperature around the Ultra-High temperature rated sprinkler is significantly reduced below 300 °F (149 °C), response time may be severely retarded.

⁴ The corrosion-resistant coatings have passed the standard corrosion test required by the approving agencies indicated in the Approval Charts. These tests cannot and do not represent all possible corrosive environments. Prior to installation, verify through the end-user that the coatings are compatible with or suitable for the proposed environment. For automatic sprinklers, the coatings indicated are applied to the exposed exterior surfaces only. Note that the spring is exposed on sprinklers with Polyester, and PTFE coatings. For PTFE coated open sprinklers only, the waterway is coated.

⁵ Wax melting point is 170 °F (76 °C) for 286 °F (141 °C) temperature rated sprinklers.

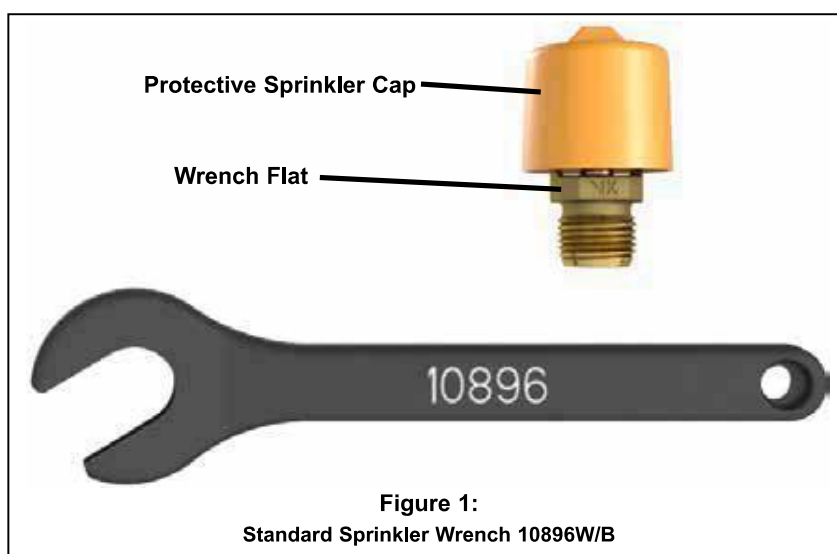


Figure 1:
Standard Sprinkler Wrench 10896W/B



TECHNICAL DATA

MICROMATIC® STANDARD RESPONSE CONVENTIONAL SPRINKLER VK118 (K5.6)

The Viking Corporation, 210 N Industrial Park Drive, Hastings MI 49058

Telephone: 269-945-9501 Technical Services: 877-384-5464 Fax: 269-818-1680 Email: techsvcs@vikingcorp.com

Approval Chart 1

Micromatic® Standard Response Conventional Sprinkler VK118
Maximum 175 PSI (12 bar) WWP

Temperature	KEY
Finish	
A1X ← Escutcheon (if applicable)	

Base Part Number ¹	SIN	Thread Size		Nominal K-Factor		Overall Length		Listings and Approvals ³ (Refer also to Design Criteria below)				
		NPT	BSP	U.S.	metric ²	Inches	mm	cULus ⁴	VdS	LPCB	CE ⁷	E ⁸
19383	VK118	1/2"	15 mm	5.6	80.6	2-3/16	56	A1, B3	A2	A2, B3	A2	—
19384	VK118	—	15 mm	5.6	80.6	2-3/16	56	A1, B3	A2	A2, B3	A2	—

NOTICE - Product Below - Limited Availability (Contact Local Viking Office)

10227	VK118	1/2"	15 mm	5.6	80.6	2-3/16	56	A1, B3	A2	A2, B3	A2	E2
10172	VK118	—	15 mm	5.6	80.6	2-3/16	56	A1, B3	A2	A2, B3	—	—

Approved Temperature Ratings

A - 135 °F (57 °C), 155 °F (68 °C), 175 °F (79 °C), 200 °F (93 °C), 286 °F (141 °C), and 360 °F (182 °C)

B - 135 °F (57 °C), 155 °F (68 °C), 175 °F (79 °C), and 200 °F (93 °C)

C - 155 °F (68 °C), 175 °F (79 °C), 200 °F (93 °C), 286 °F (141 °C), and 360 °F (182 °C)

Approved Finishes

- 1 - Brass, Chrome, White Polyester^{5,6}, Black Polyester^{5,6}, and Black PTFE⁵
- 2 - Brass, Chrome, White Polyester^{5,6}, and Black Polyester^{5,6}
- 3 - Wax-Coated Brass and Wax over Polyester⁵
- 4 - Brass and Chrome

Footnotes

¹ Base part number is shown. For complete part number, refer to Viking's current price schedule.

² Metric K-factor shown is for use when pressure is measured in bar. When pressure is measured in kPa, divide the metric K-factor shown by 10.0.

³ This table shows the listings and approvals available at the time of printing. Check with the manufacturer for any additional approvals.

⁴ Listed by Underwriters Laboratories Inc. for use in the U.S. and Canada.

⁵ cULus Listed as corrosion resistant.

⁶ Other colors are available on request with the same Listings and Approvals as the standard colors.

⁷ CE Certified, Standard EN 12259-1, EC-certificate of conformity 0786-CPD-40137, 0786-CPD-40142, 0786-CPD-40177, 0786-CPD-40182, 0832-CPD-2001, and 0832-CPD-2003.

⁸ MED Certified, Standard EN 12259-1, EC-certificate of conformity 0832-MED-1003 and 0832-MED-1008.

DESIGN CRITERIA - UL

(Also refer to Approval Chart 1)

cULus Listing Requirements:

Micromatic® Standard Response Conventional Sprinkler VK118 is cULus Listed as indicated in the Approval Chart 1 for installation in accordance with the latest edition of NFPA 13 for old style (conventional) sprinklers.

- Designed for use in Light, Ordinary, and Extra Hazard occupancies.
- The sprinkler installation rules contained in NFPA 13 for standard spray old style (conventional) sprinklers must be followed.

IMPORTANT: Always refer to Bulletin Form No. F_091699 - Care and Handling of Sprinklers. Also refer to page SR1-3 for general care, installation, and maintenance information. Viking sprinklers are to be installed in accordance with the latest edition of Viking technical data, the appropriate standards of NFPA, LPCB, APSAD, VdS or other similar organizations, and also with the provisions of governmental codes, ordinances, and standards, whenever applicable.



TECHNICAL DATA

MICROMATIC® STANDARD RESPONSE CONVENTIONAL SPRINKLER VK118 (K5.6)

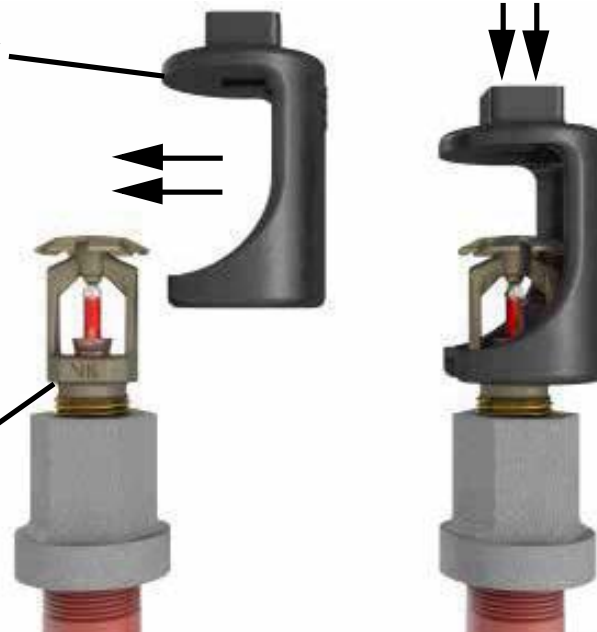
The Viking Corporation, 210 N Industrial Park Drive, Hastings MI 49058

Telephone: 269-945-9501 Technical Services: 877-384-5464 Fax: 269-818-1680 Email: techsvcs@vikingcorp.com

Sprinkler wrench 13577W/B** must be used for installing wax coated sprinklers.

Step 1: Carefully slide the wrench sideways around the deflector, ensuring engagement with the sprinkler wrench flats.

Wax Coated
Upright Sprinkler



** A 1/2" ratchet is required
(not available from Viking)

Step 2: Carefully press the wrench downward and ensure engagement with the sprinkler wrench flats.

Figure 2: Wrench 13577W/B for Wax Coated Sprinklers

Photo Description : Material Sample [Daylight Detector]



1. Reply To Comments

Confirm, please refer to page Application for technical submission approval for the list of applications of the Daylight Detector in different areas.

posco e&c

APPLICATION FOR TECHNICAL
SUBMISSION APPROVAL

Electrical Installation-Material Sample

Material Sample : Daylight & Movement Detector

Submission Date: 17-Nov.-2015

PLEASE LIST AND SUMMARIZE
THE USAGE & FUNCTIONS THAT
OFFER TO DIFFERENT AREAS
FOR RECORD & REVIEW.



EXCHANGE SQUARE(ST. 106 SITE)

Item	Description	Usage	Model Number	Country of Origin	Manufacturer	Supplier	Brand Name	ARUP Approval Reference
1	Daylight Detector	Arcade Areas, lavatory, office	LRM1080/00	Netherlands	Philips	GS Neotek	Philips	B

Prepared by:

Park Song Man

POSCO E&C Ltd.

Date: 17-Nov.-2015

Approved by:

[Signature]

ARUP

Date: 26 NOV 15

2. Catalogues

LRMI070/00 LRM1080/00 Datasheet Occuswitch movement detector

1/7



General description

The Occuswitch is a movement detector with a build-in switch. It will switch off the lights in a room or area when it is vacated and thus save up to 30% of electrical energy. The Occuswitch can switch any load up to 6 A and control an office area of around 20m². A detachable mains connector enables easy installation and mounting of the Occuswitch in the ceiling. A separate Wieland cable is available for easy, fast and trouble-free installation.

The Occuswitch family exists of:

LRMI070 Basic Occuswitch

LRM1080 Advanced Occuswitch

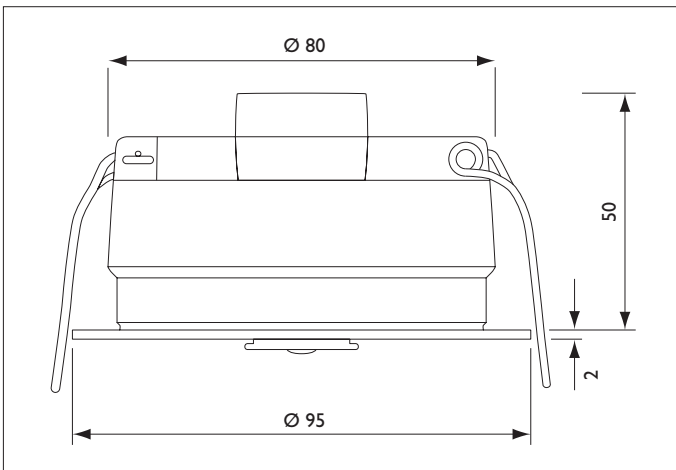
LCCT070 Wieland cable

LRH1070 Ceiling mounting box

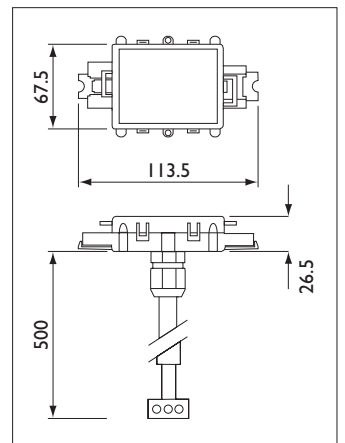
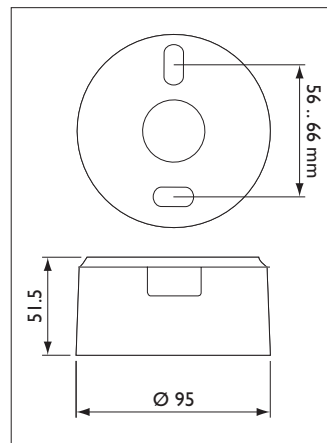
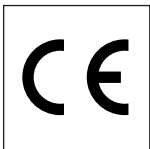
Applications

The Occuswitch is designed for use in offices and similar applications, including toilets, storage rooms, etc. It is optimized for recessed ceiling mounting and for mounting heights between 2.5 and 3.5 meter. The surface box allows surface-mounting as well, with either recessed wiring or surface-mounted ducts.

The advanced Occuswitch can be connected in parallel (max 10) to cover larger area's like open plan offices. The use of different mains groups or even phases is no problem.



Dimensions in mm



PHILIPS