

**Construction/Installation of small-scale  
water infrastructure  
in the Dry Zone of Myanmar  
(Shwebo, Monywa, Myingyan, Nyaung U and Chauk)**

**Technical specification sheets**

## *Table of contents:*

- 01 MYR PT GMP- General mass plan
- 02 MYR PT DCWT- Detail for General mass plan
- 03 MYR PT CWT - Details for Communal Water Tank (Reservoir) of 5000 gallons
- 04 MYR PT TSP HWP- Hand well pumps seen from above & Service platform (Top View)
- 05 MYR PT DGMP- Hand well pumps (Side-View) & Service platform
- 06 MYR PT HWPPD- Hand well pumps (Side-View) & Service platform - Details
- 07 MYR PT HWPRP- Hand well pumps & Service platform (Reinforcement Plan)
- Details for Gutter network:
- 08 PL RWHN: Rainwater-harvesting system
- 09 PL LC: Layer components for CWT

# TOP VIEW

HYDROCONSEIL

PROJ. CODE:	629
DESIGN:	J.MANCRAUX
DRAWING:	D.PLASSE
CONTROL:	H.LAHORPOOR
DATE:	Nov 2016

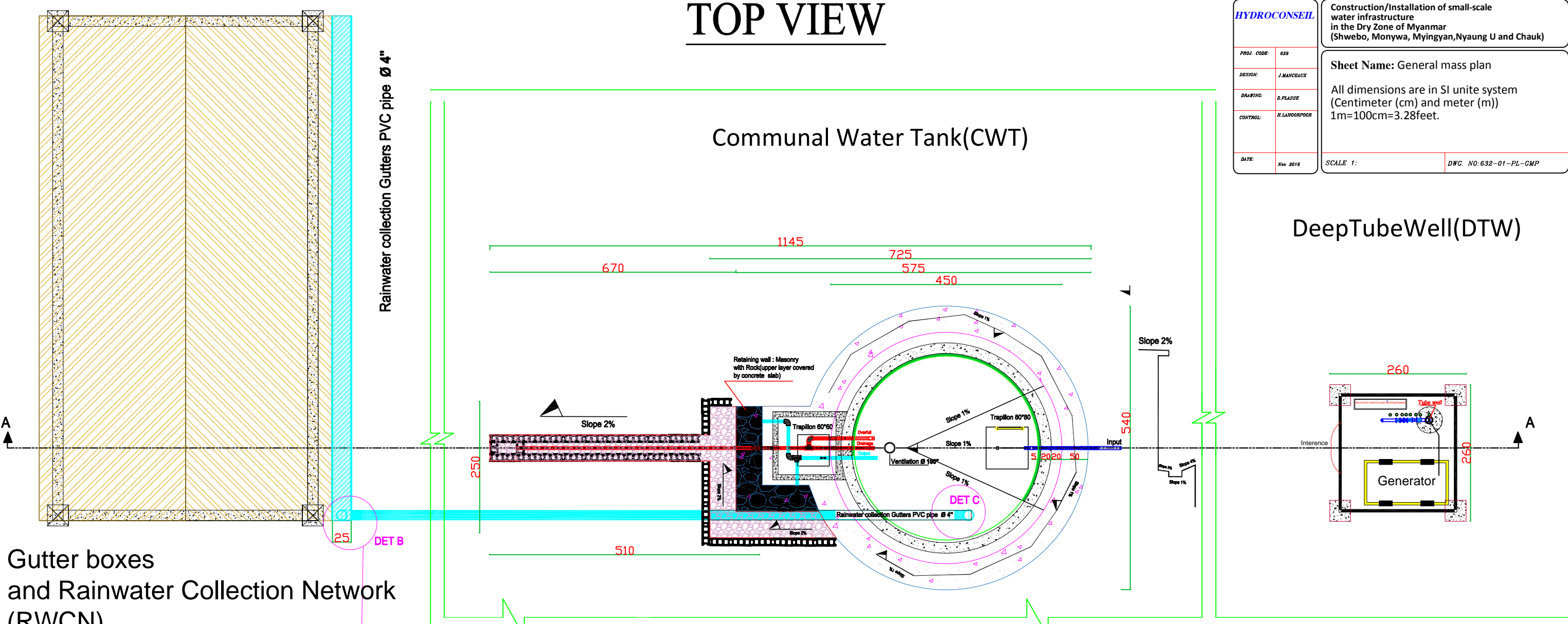
Construction/Installation of small-scale water infrastructure in the Dry Zone of Myanmar (Shwebo, Monywa, Myingyan, Nyaung U and Chauk)

Sheet Name: General mass plan

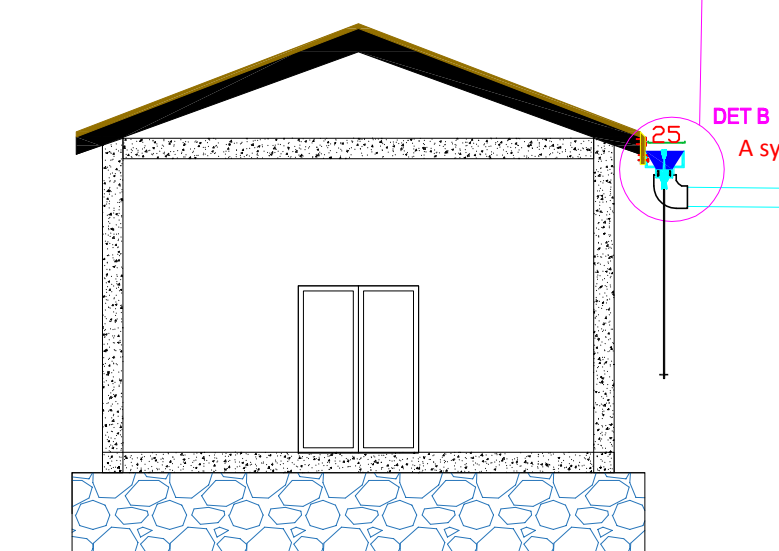
All dimensions are in SI unite system (Centimeter (cm) and meter (m))  
1m=100cm=3.28feet.

SCALE 1:

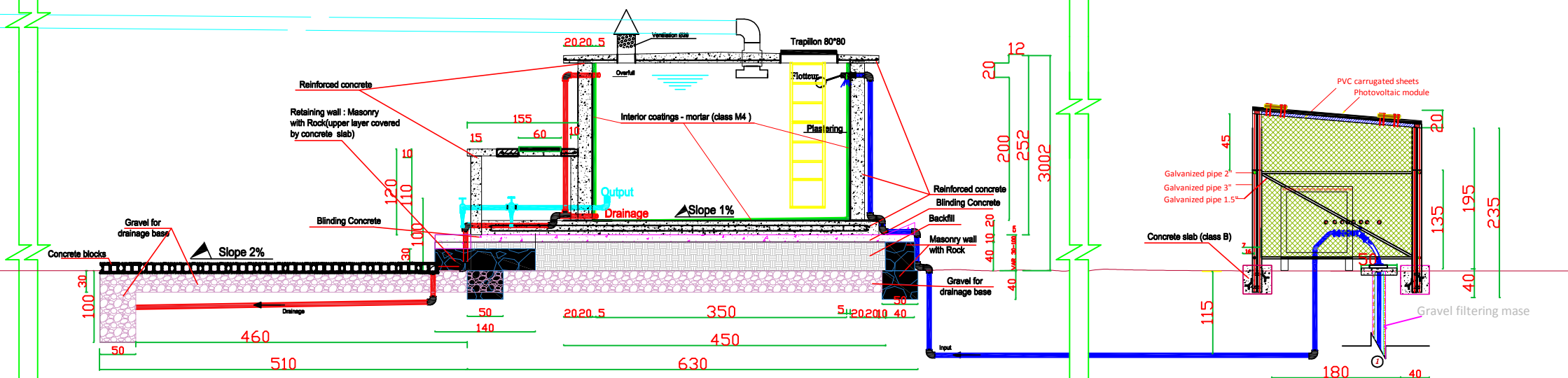
DWC. NO: 632-01-PL-CMP



Gutter boxes and Rainwater Collection Network (RWCN)



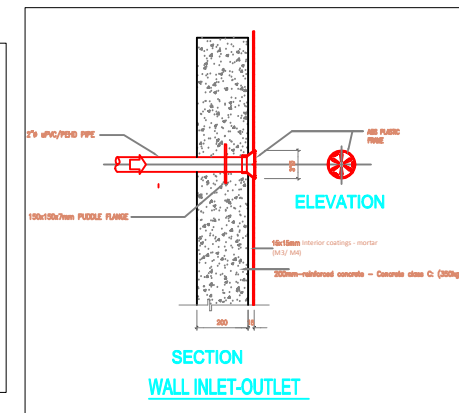
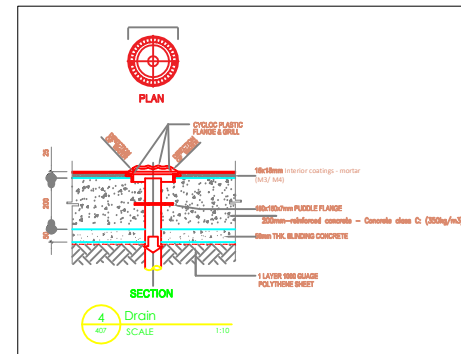
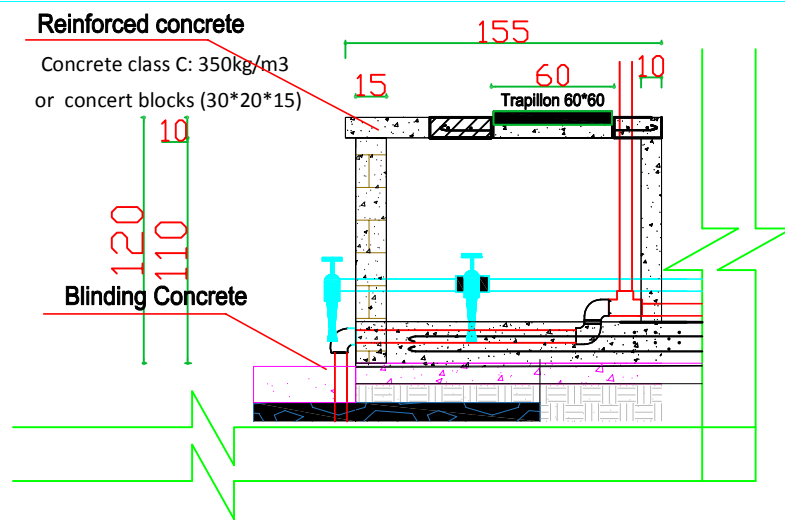
DET B  
A system for diverting the initial rainfall



# Profile A-A

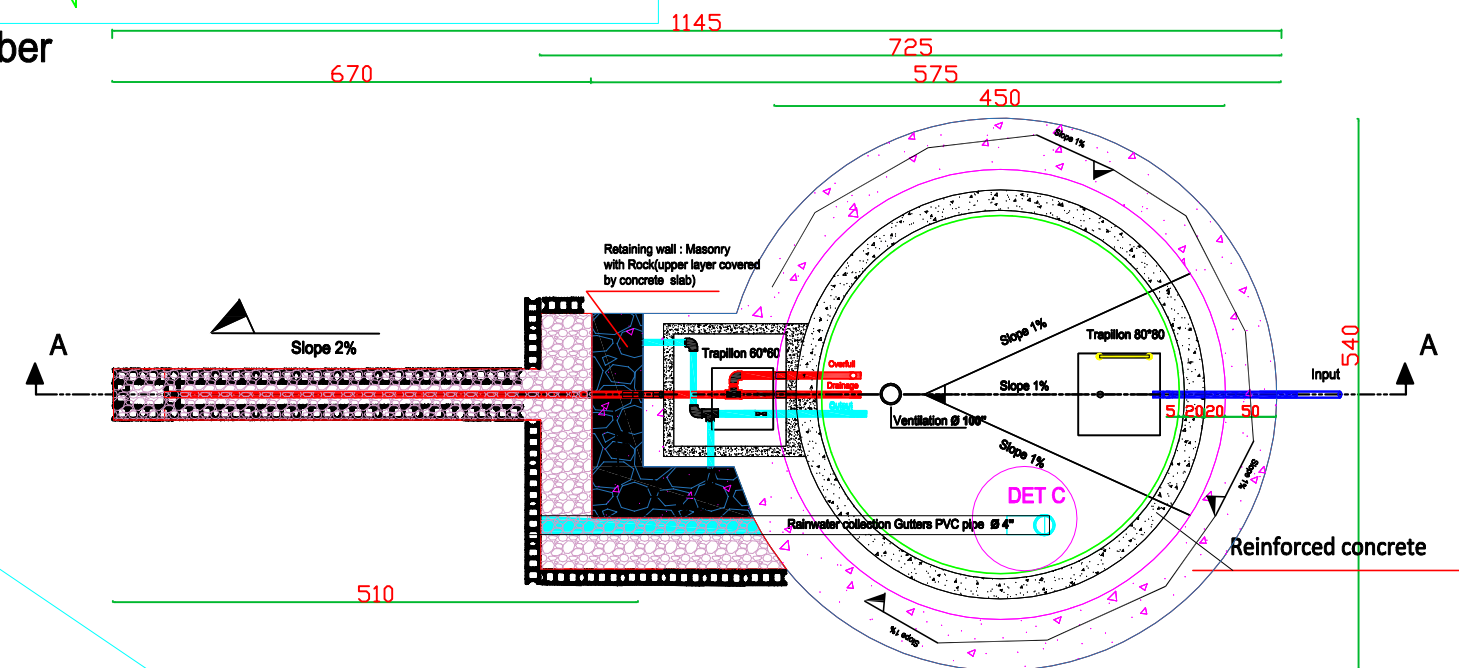
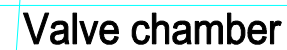


## PLAN VIEW

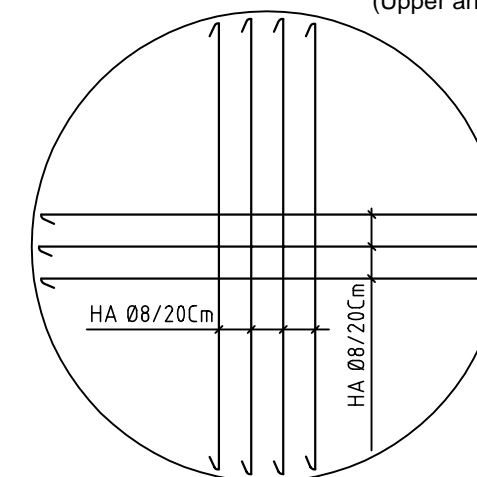


<h2 style="margin: 0;">HYDROCONSEIL</h2>		<p><b>Construction/Installation of small-scale water infrastructure in the Dry Zone of Myanmar (Shwebo, Monywa, Myingyan, Nyaung U and Chauk)</b></p>	
PROJ. CODE:	629	<p><b>Sheet Name: Details for Communal Water Tank (Reservoir) of 5000 gallons</b></p> <p>All dimensions are in SI unite system (Centimeter (cm) and meter (m)) 1m=100cm=3.28feet.</p>	
DESIGN:	J.MANCEAUX		
DRAWING:	D.PLASSE		
CONTROL:	H.LAHORPOOR		
DATE:	Nov 2016	SCALE 1:	DWG.NO: 632-03MYRPT CWT5000gal

## Reinforcement bars

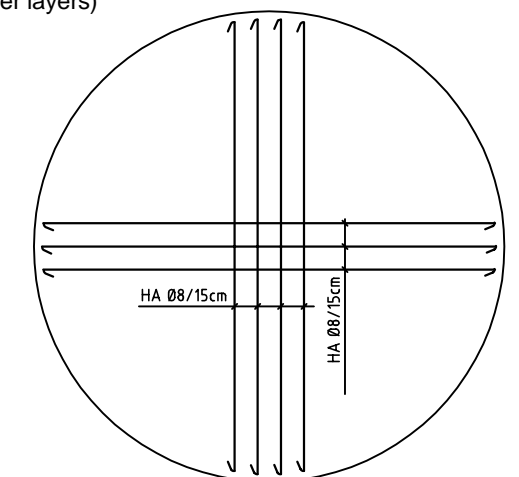


### Details floor (raft) slab

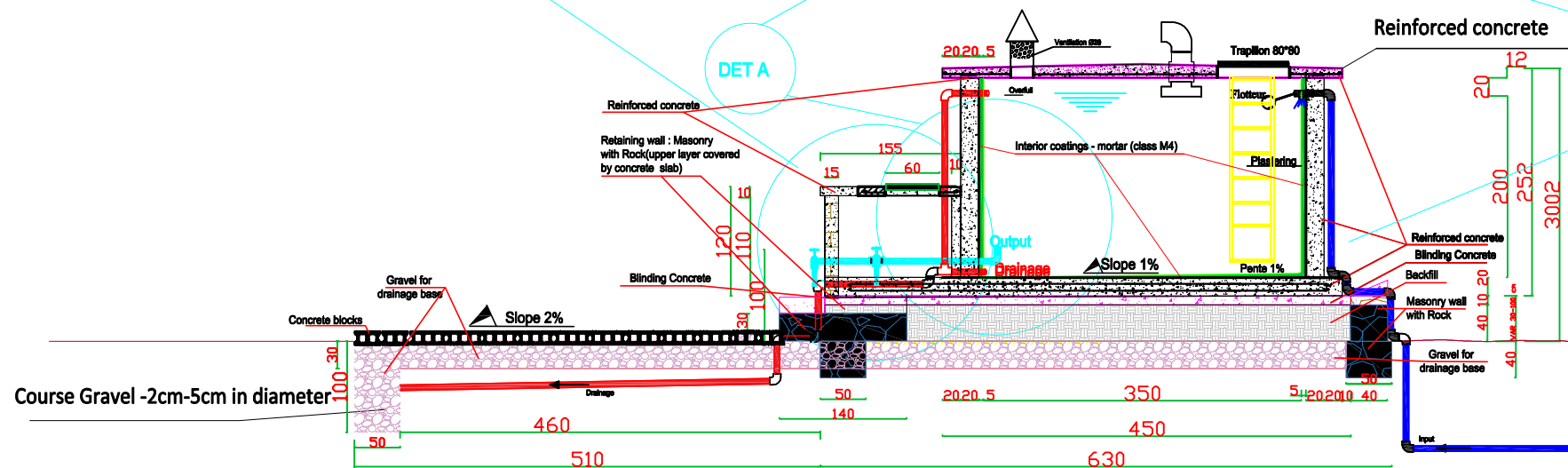


### Details of roofing slab

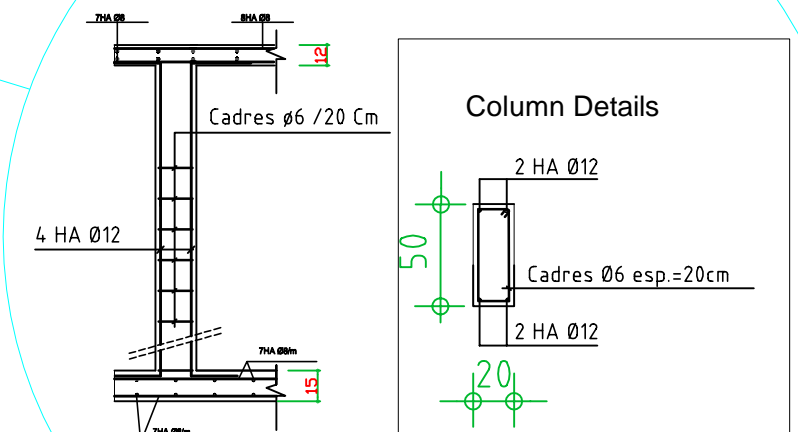
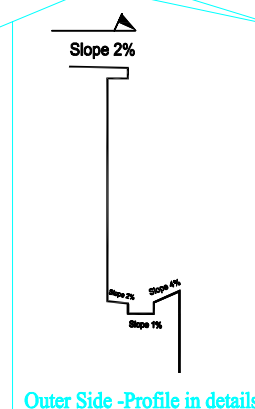
(Upper and lower layers)



## Reinforcement bars



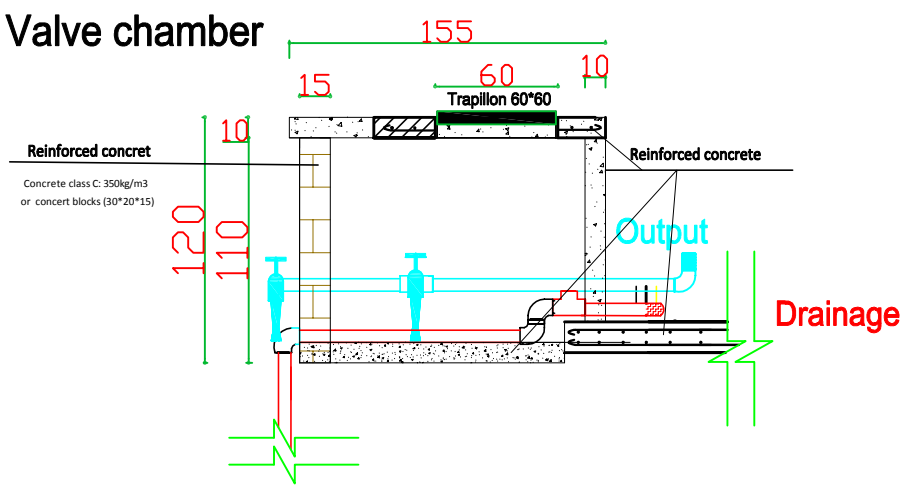
## Profile A-A



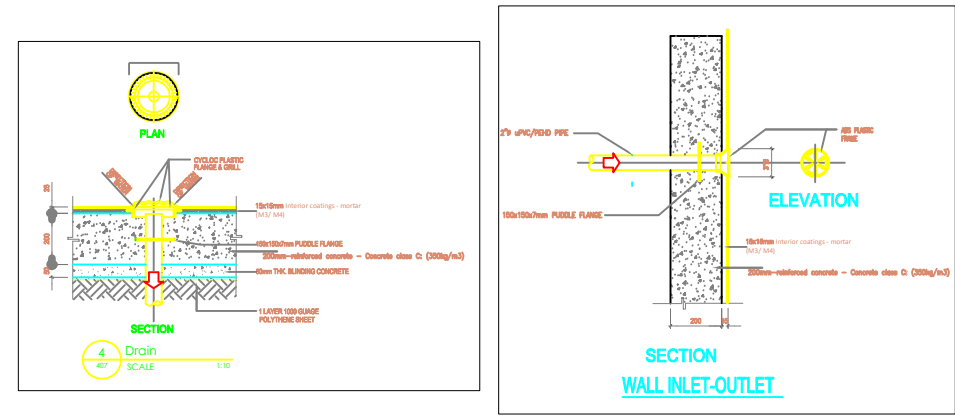
# DET A



Valve chamber



PLAN VIEW



HYDROCONSEIL

PROJ. CODE:	629
DESIGN:	J.MANCEAUX
DRAWING:	D.PLASSE
CONTROL:	H.LAHOORPOOR
DATE:	Nov 2016

Construction/Installation of small-scale water infrastructure in the Dry Zone of Myanmar (Shwebo, Monywa, Myingyan, Nyaung U and Chauk)

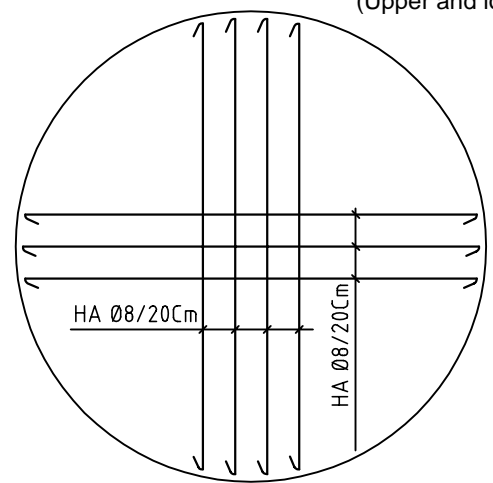
Sheet Name: Details for Communal Water Tank (Reservoir) of 5000 gallons

All dimensions are in SI unite system (Centimeter (cm) and meter (m))  
1m=100cm=3.28feet.

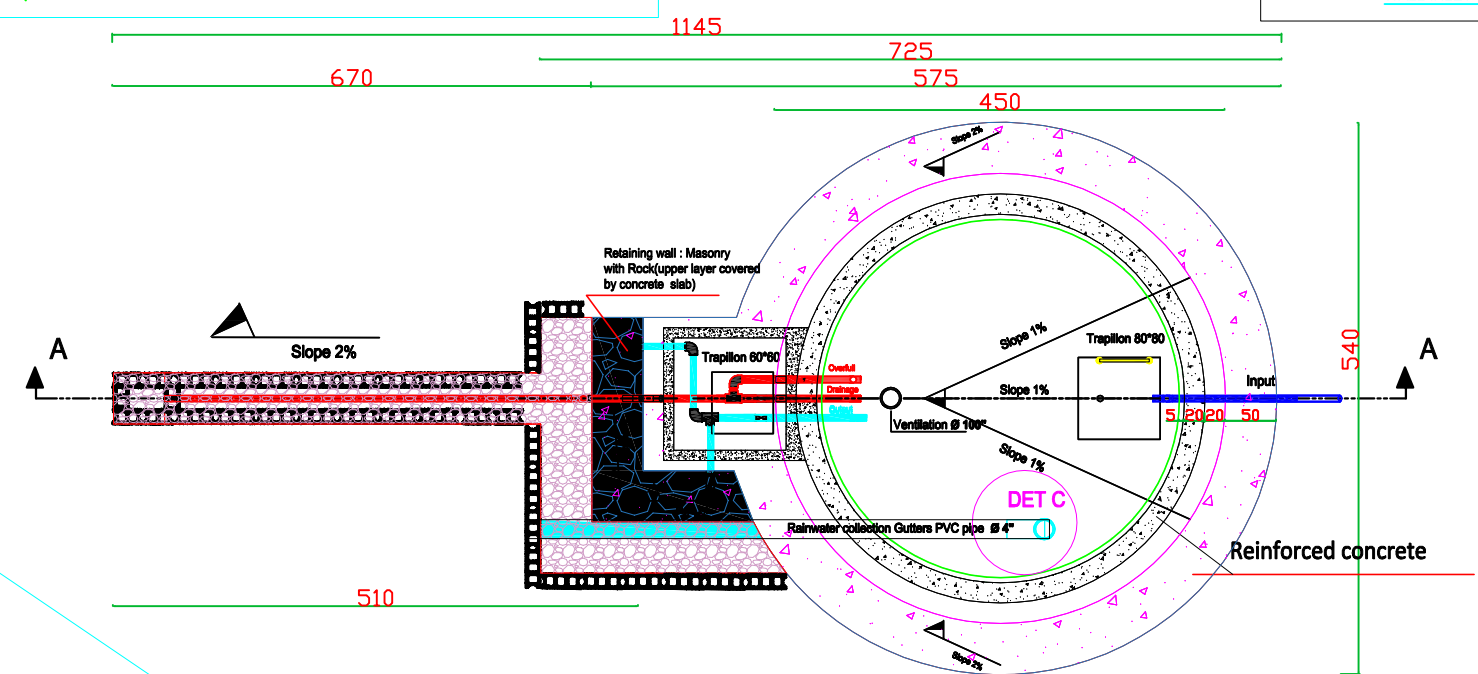
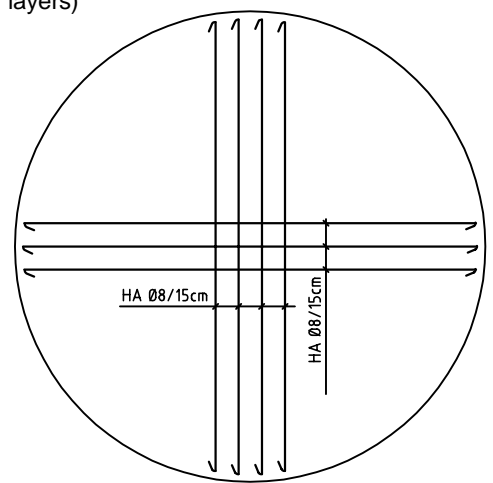
SCALE 1: DWG.NO: 632-03MYRPT CWT5000gal

Reinforcement bars

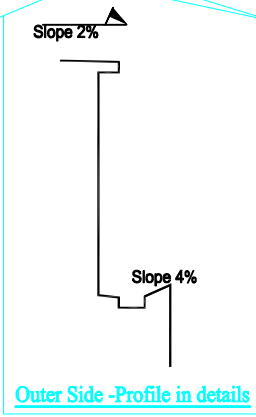
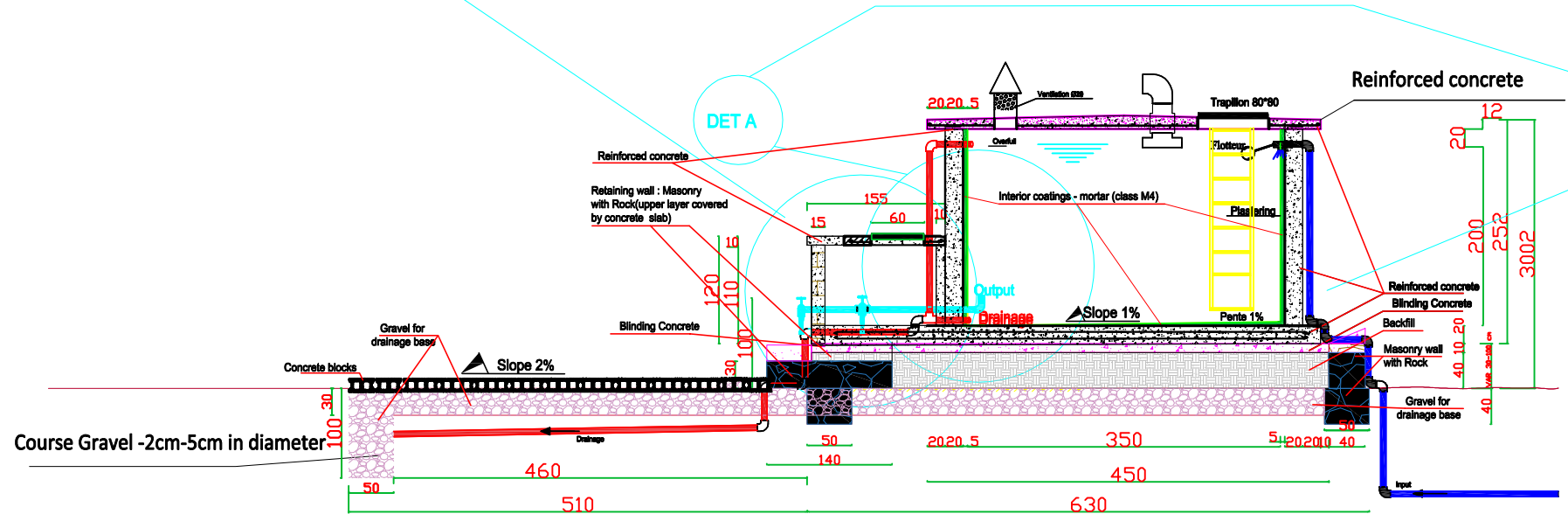
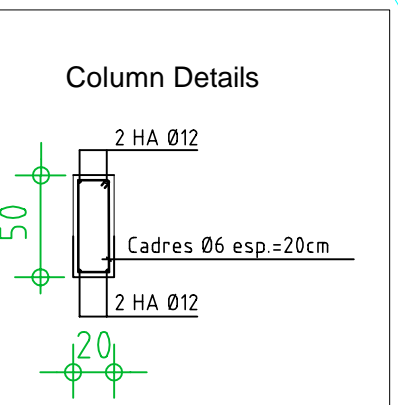
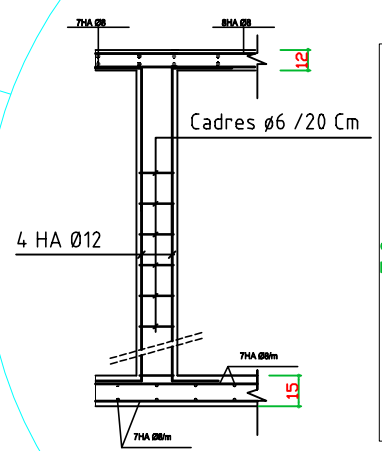
Details floor (raft) slab



Details of roofing slab



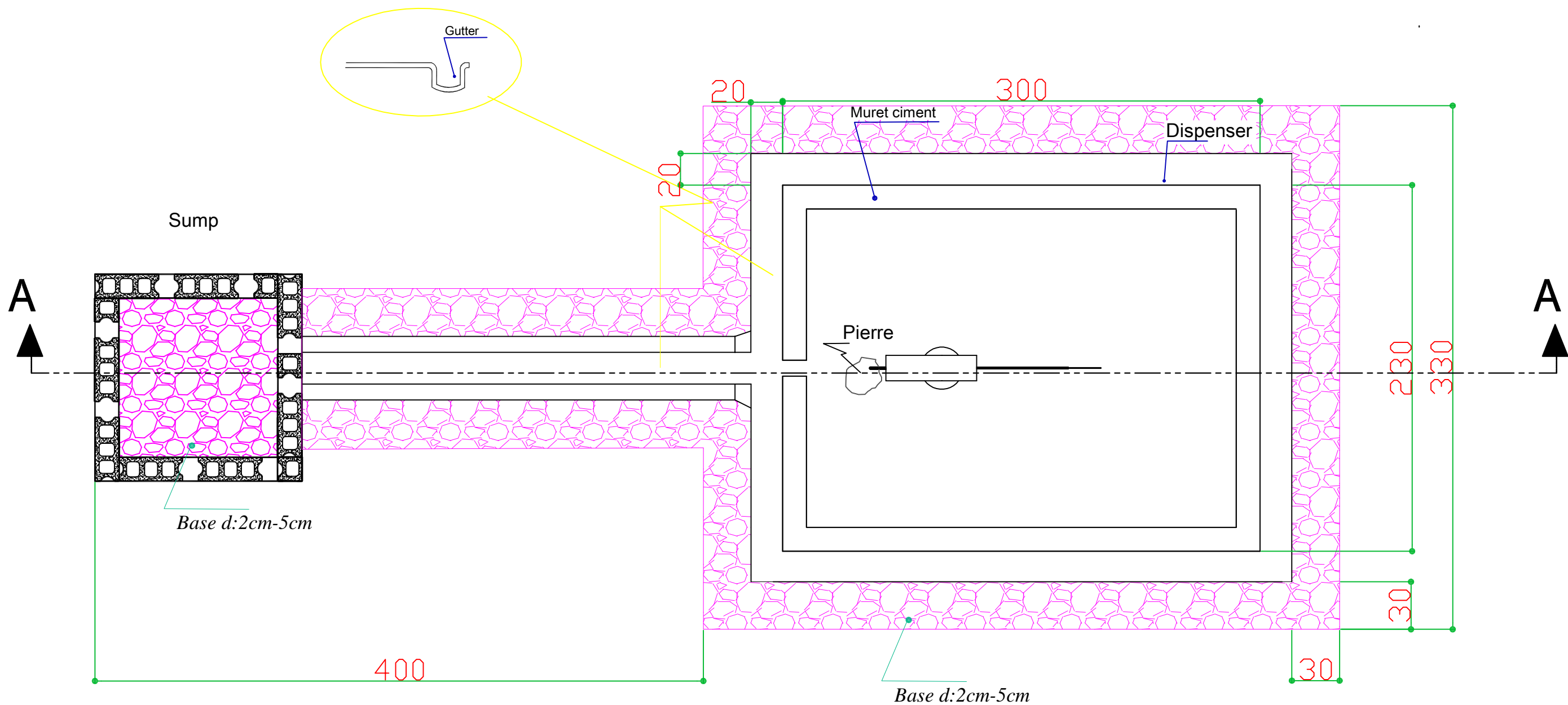
Reinforcement bars



Profile A-A

DET A

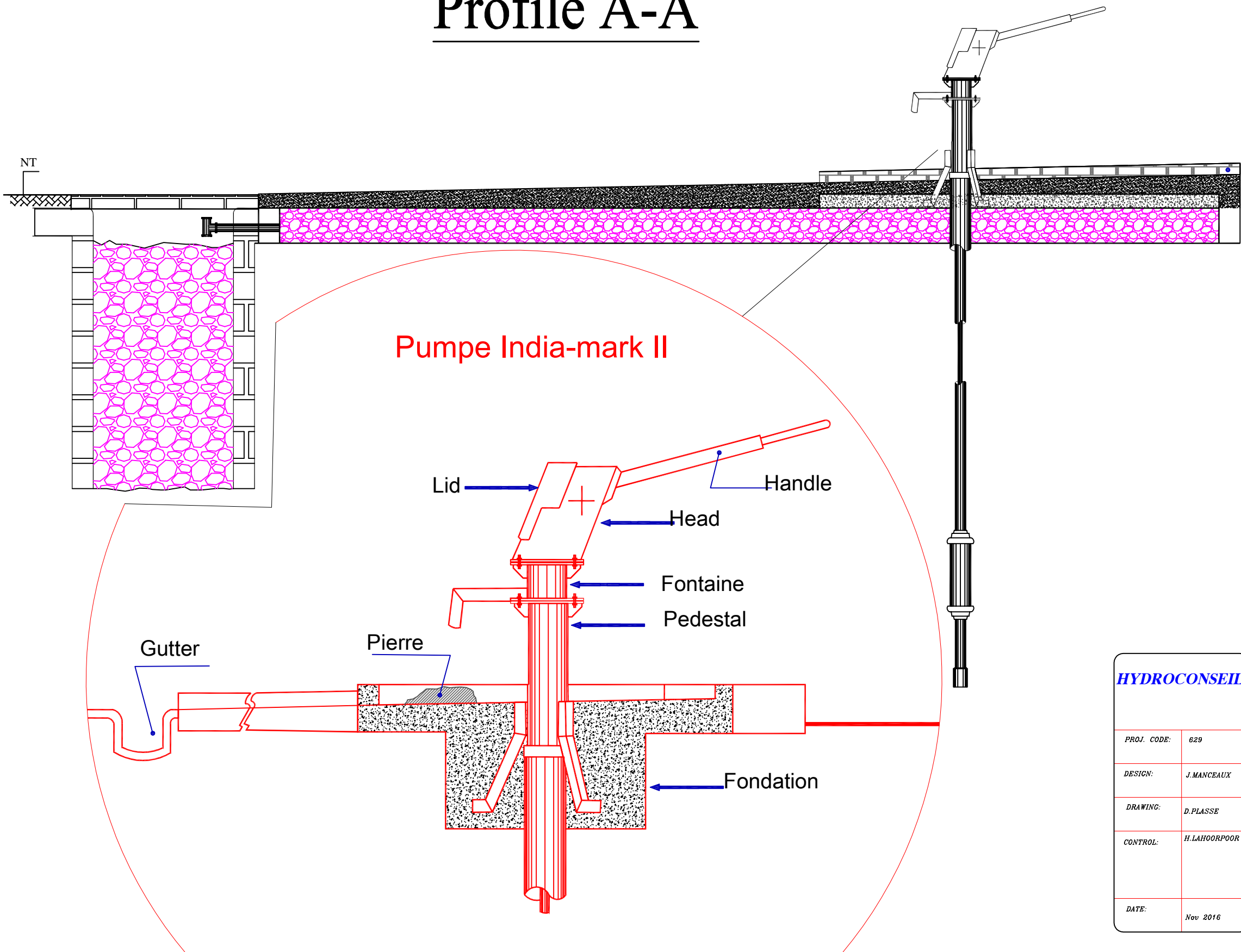
# Hand well pumps & Service platform (Top View)



HYDROCONSEIL		Construction/Installation of small-scale water infrastructure in the Dry Zone of Myanmar (Shwebo, Monywa, Myingyan, NyaungU and Chauk)	
PROJ. CODE:	629	Sheet Name: Hand well pumps (Top-View) & Service platform (Top View)  All dimensions are in SI unite system (Centimeter (cm) and meter (m)) 1m=100cm=3.28feet.	
DESIGN:	J.MANCEAUX		
DRAWING:	D.PLASSE		
CONTROL:	H.LAHOORPOOR		
DATE:	Nov 2016	SCALE 1:	DWG.NO: 632-04MYR-PT TSP HWP

# Hand well pumps (Side-View) & Service platform

## Profile A-A



HYDROCONSEIL	
PROJ. CODE:	629
DESIGN:	J.MANCEAUX
DRAWING:	D.PLASSE
CONTROL:	H.LAHORPOOR
DATE:	Nov 2016

Construction/Installation of small-scale water infrastructure in the Dry Zone of Myanmar (Shwebo, Monywa, Myingyan, NyaungU and Chauk)	
Sheet Name: Hand well pumps (Side-View) & Service platform	
All dimensions are in SI unite system (Centimeter (cm) and meter (m)) 1m=100cm=3.28feet.	
SCALE 1:	DWG. NO: 632-05MYR PT DGMP



# Hand well pumps (Side-View) & Service platform

HYDROCONSEIL

PROJ. CODE:	629
DESIGN:	J.MANCEAUX
DRAWING:	D.PLASSE
CONTROL:	H.LAHOORPOOR
DATE:	Nov 2016

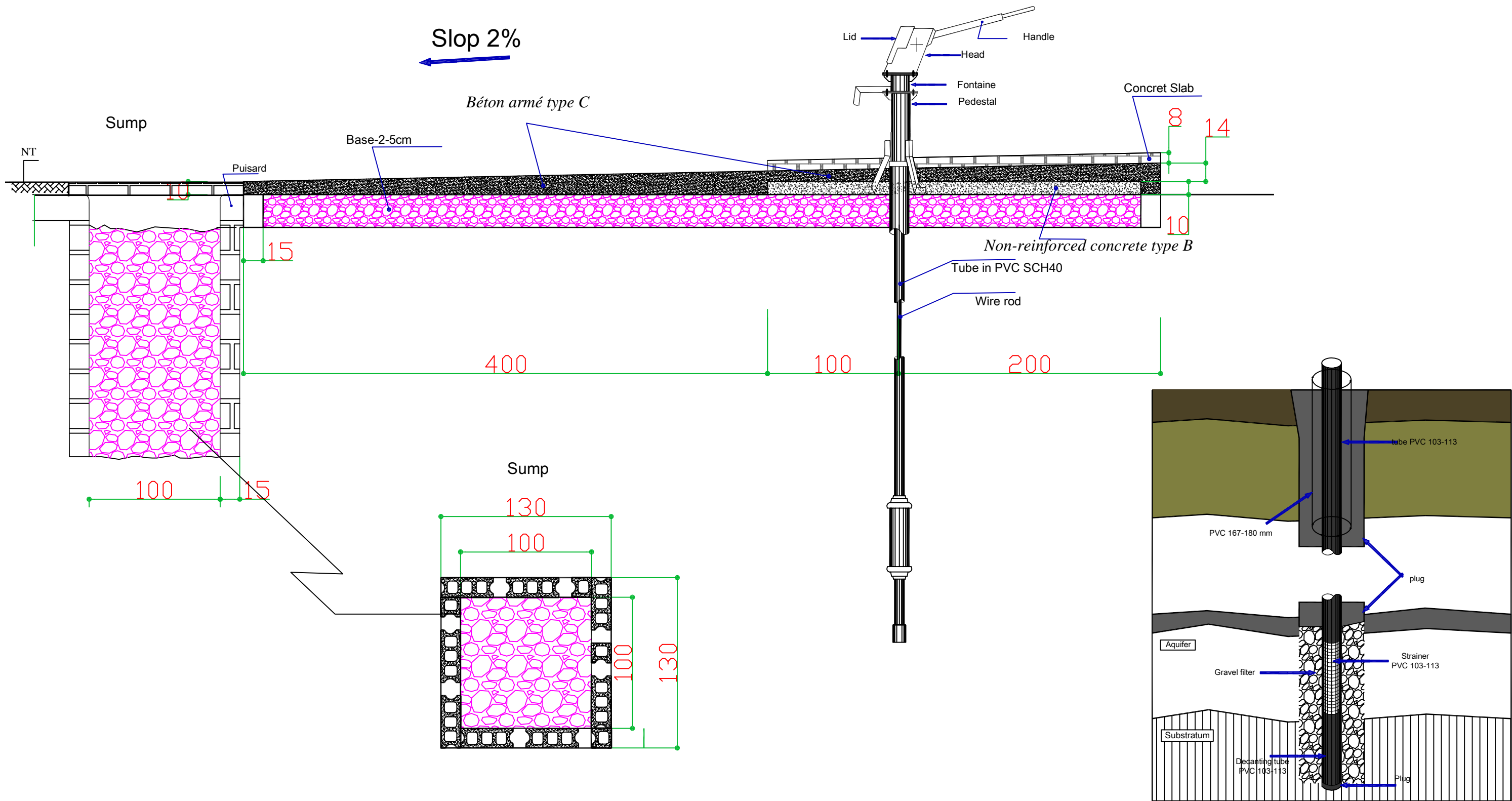
Construction/Installation of small-scale water infrastructure in the Dry Zone of Myanmar (Shwebo, Monywa, Myingyan, NyaungU and Chauk)

Sheet Name: Hand well pumps (Side-View) & Service platform - Details

All dimensions are in SI unite system (Centimeter (cm) and meter (m))  
1m=100cm=3.28feet.

SCALE 1:

DWG. NO: 632-06MYR PT HWPPD



# Hand well pumps (Side-View)& Service platform Reinforcement Plan

**HYDROCONSEIL**

PROJ. CODE:	629
DESIGN:	J.MANCEAUX
DRAWING:	D.PLASSE
CONTROL:	H.LAH00RPOOR
DATE:	Nov 2016

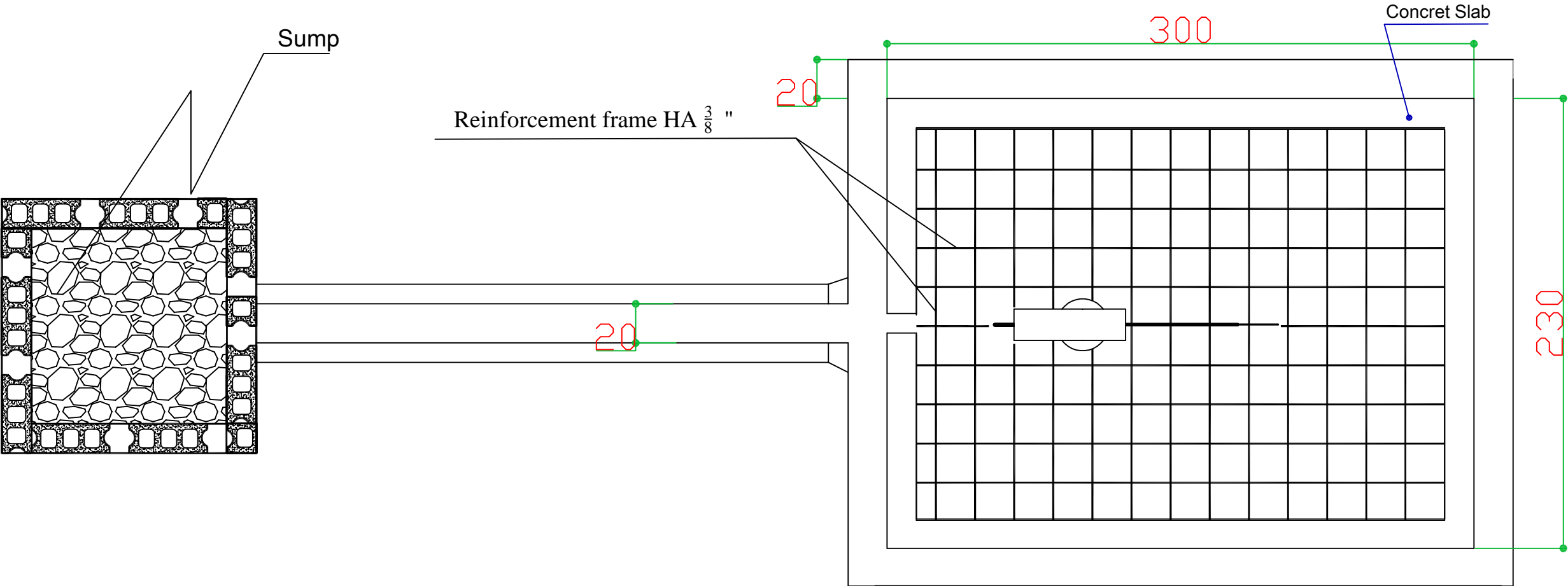
Construction/Installation of small-scale  
water infrastructure  
in the Dry Zone of Myanmar  
(Shwebo, Monywa, Myingyan, NyaungU and Chauk)

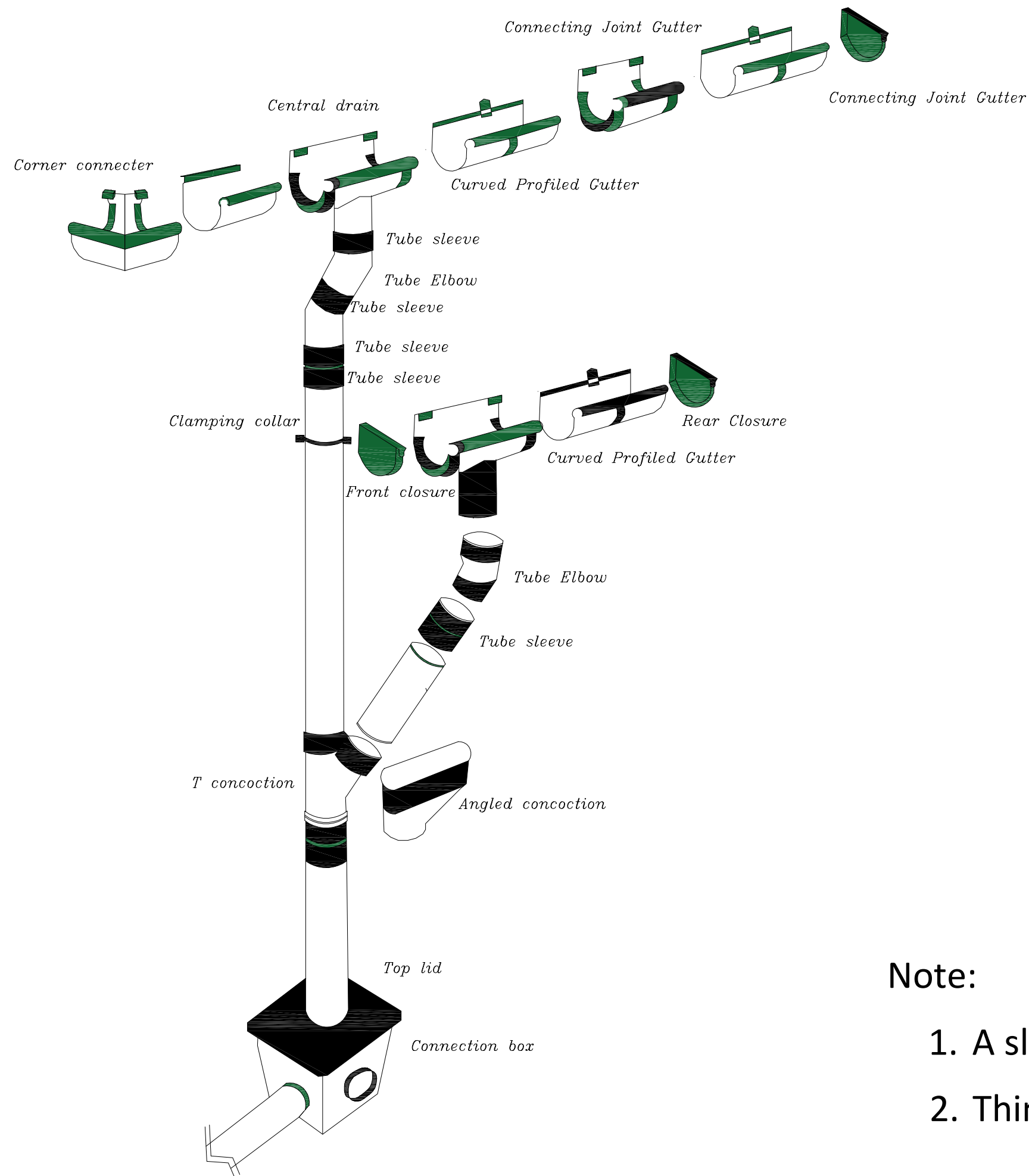
**Sheet Name:** Hand well pumps & Service platform  
(Reinforcement Plan)

All dimensions are in SI unite system

(Centimeter (cm) and meter (m))  
1m=100cm=3.28feet.

SCALE 1: DWG. NO: 632-07MYR PT HWPRP





# HYDROCONSEIL

PROJ. CODE:	629
DESIGN:	J.MANCEAUX
DRAWING:	D.PLASSE
CONTROL:	H.LAHOORPOOR
DATE:	Nov 2016

Construction/Installation of small-scale water infrastructure in the Dry Zone of Myanmar (Shwebo, Monywa, Myingyan, Nyaung U and Chauk)

**Sheet Name:** Details for Gutter network:  
Rainwater-harvesting system

Il dimensions are in SI unite system (Centimeter (cm) and meter (m))  
1m=100cm=3.28feet.

SCALE 1:

DWG. NO: 632-08-PL-RWHN

Note:

1. A slope of 5mm/m is required in any linear
2. Think about putting a hook every 5 meters

PROJ. CODE:	629
DESIGN:	J. MANCEAUX
DRAWING:	D. PLASSE
CONTROL:	H. LAHOORPOOR
DATE:	Nov 2016

Sheet Name: Layer components

All dimensions are in SI unite system  
(Centimetre (cm) and meter (m))  
1m=100cm=3.28feet.

SCALE 1:

DWG.NO: 632-09MYRPT LC

**Layer components:**

- 1- Interior coatings - mortar (M3/ M4)
- 2- Reinforced concrete - Concrete class C: (350kg/m3)

**Layer components:**

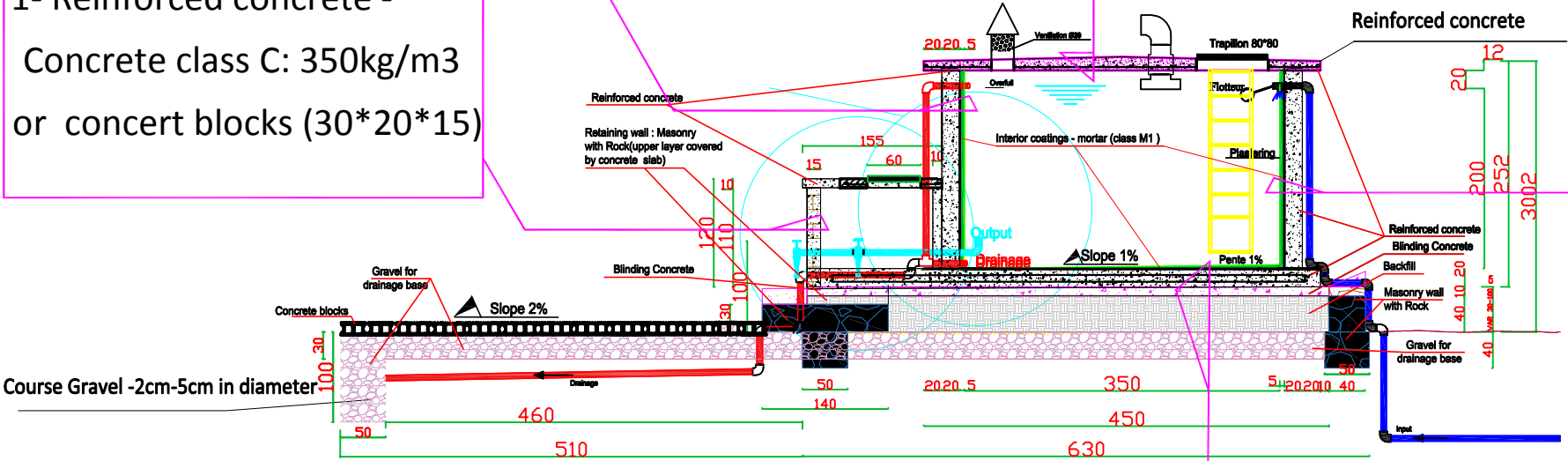
- 1- Reinforced concrete - Concrete class C: 350kg/m3

**Layer components:**

- 1- Reinforced concrete -  
Concrete class C: 350kg/m3  
or concert blocks (30\*20\*15)

**Layer components:**

- 1- Interior coatings - mortar (M3/ M4)
- 2- Reinforced concrete - Concrete class C: (350kg/m3)



Profile A-A

**Layer components:**

- 1- Interior coatings - mortar class (M3/ M4)/Hydro insulation
- 2- Reinforced concrete - Concrete class C: 350kg/m3
- 3- Blinding concrete class A
- 4- Compacted soil berried in retaining wall (local soil)
- 5- Graveled drainage base (2-5cm)