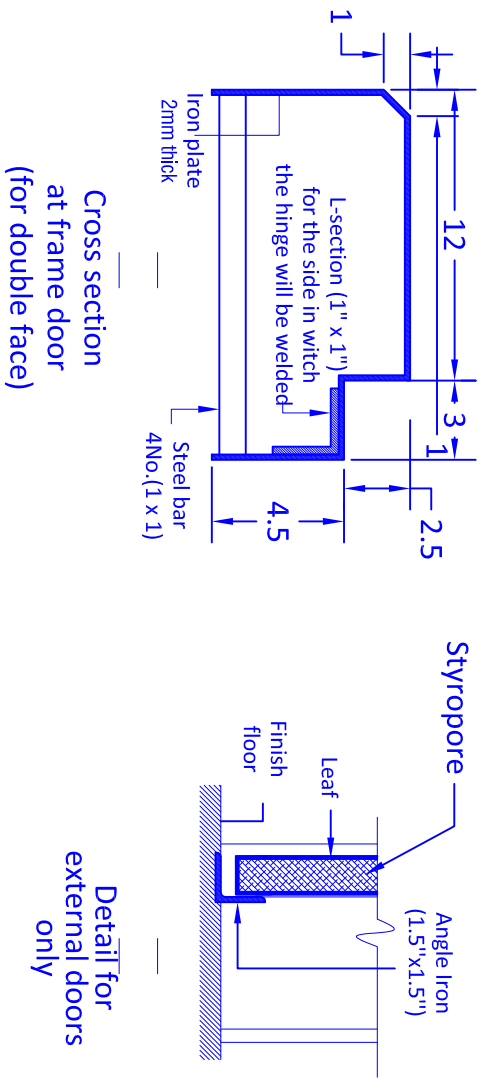
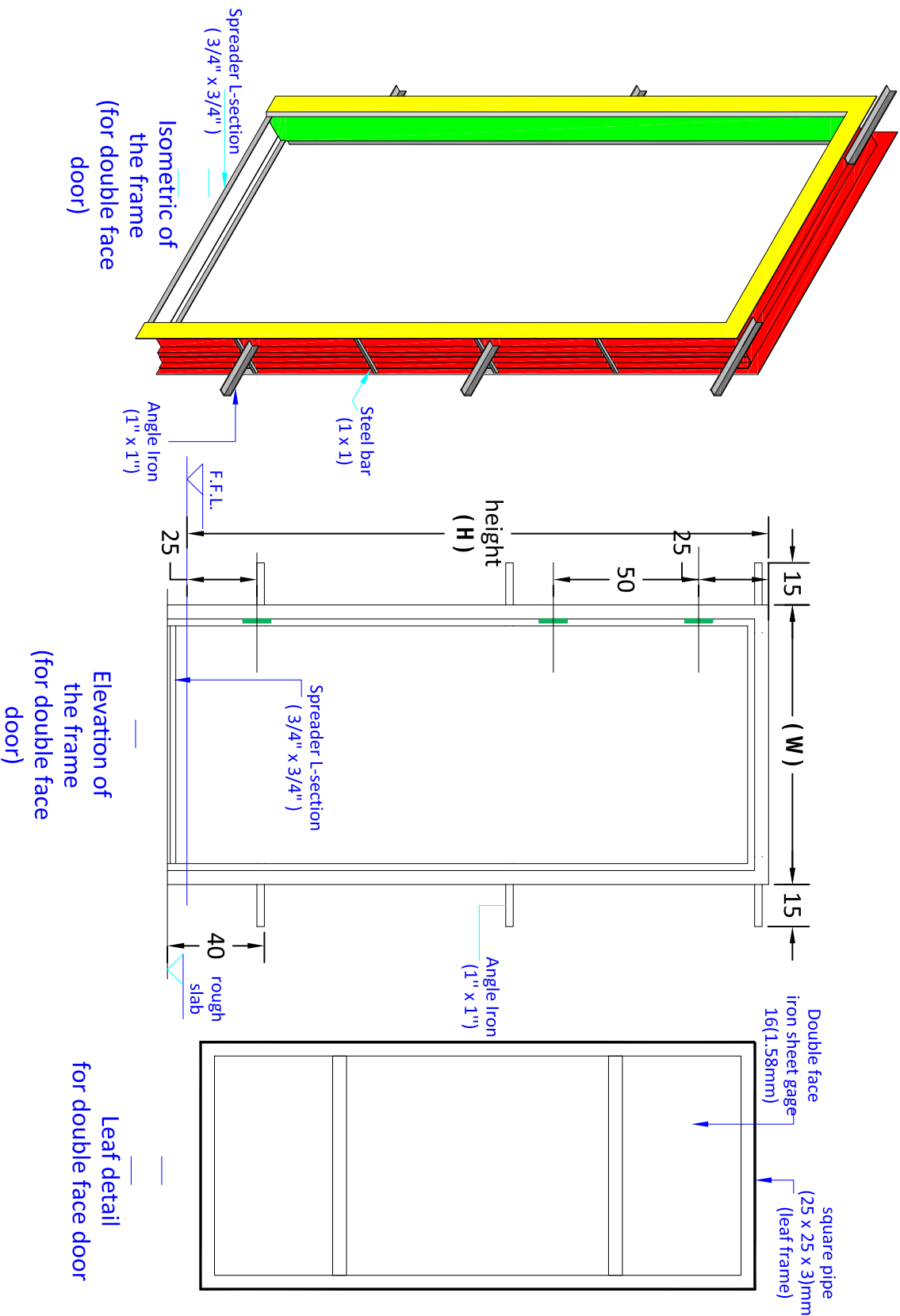


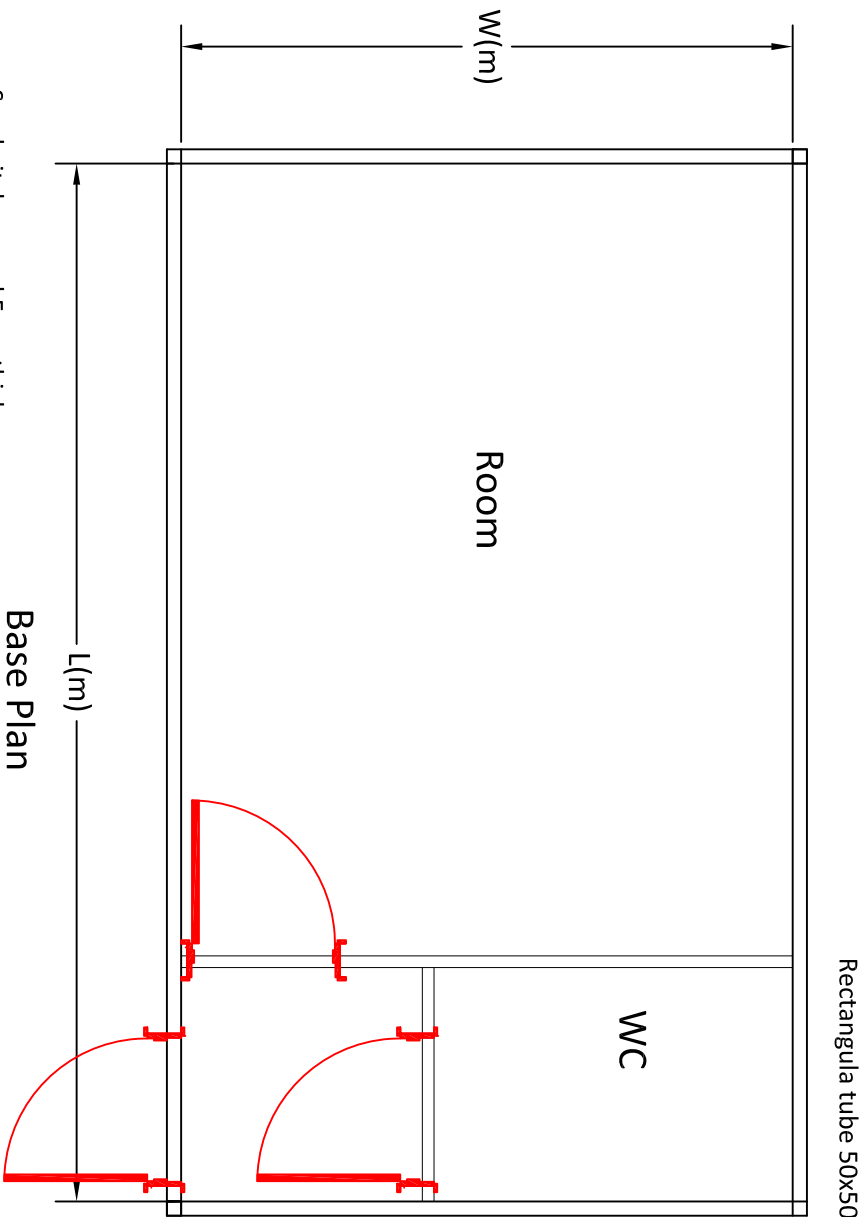
Detail of PVC Doors

Typical Drawings for Renovation		
Drawn by: Soran Rostam Aziz		
Sheet Title:		
Detail of PVC Doors		
Scale: NTS	Date:	DWG No.

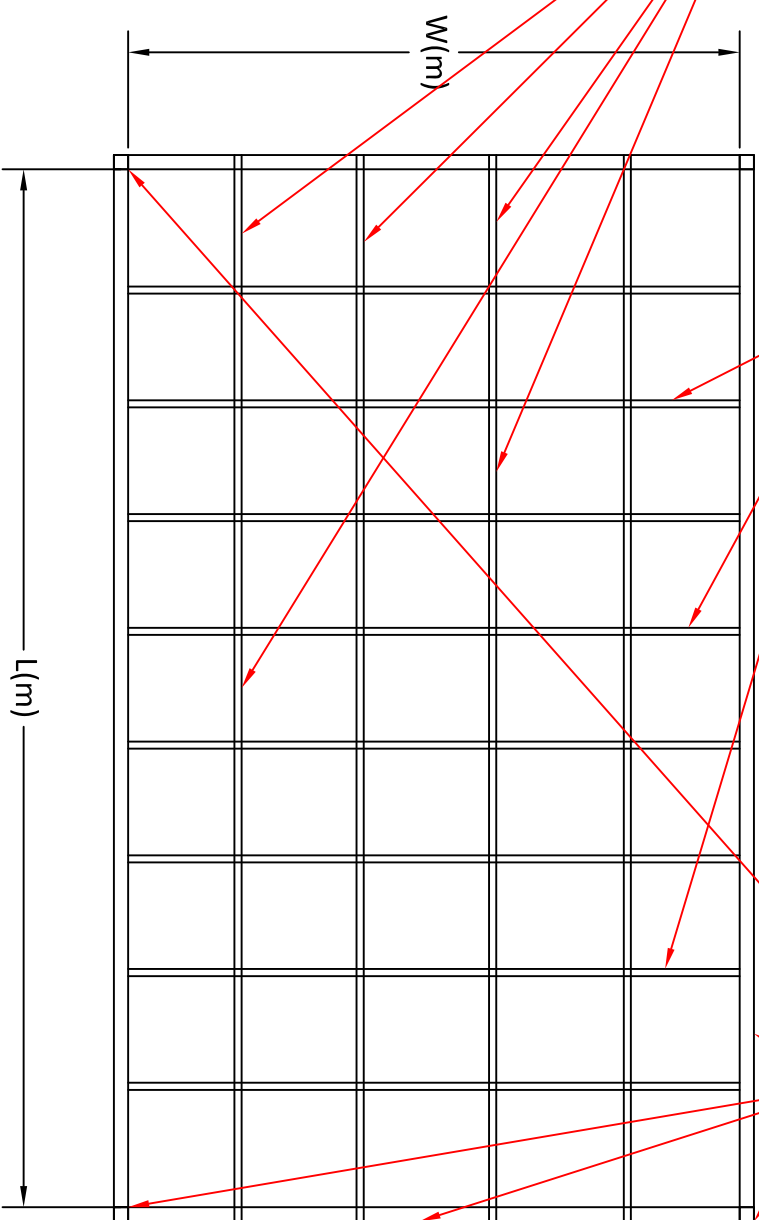


Detail of Double Face Steel Door

Typical Drawings for Renovation		
Drawn by: Soran Rostam Aziz		
Sheet Title:		
Detail of Double Face Steel Door		
Scale: NTS	Date:	DWG No.

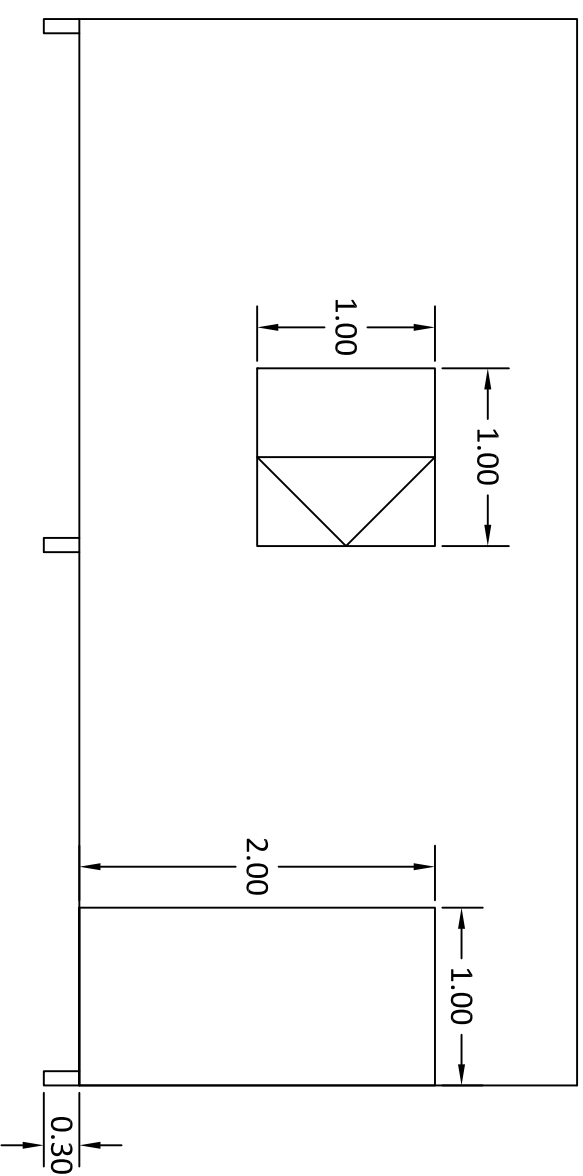
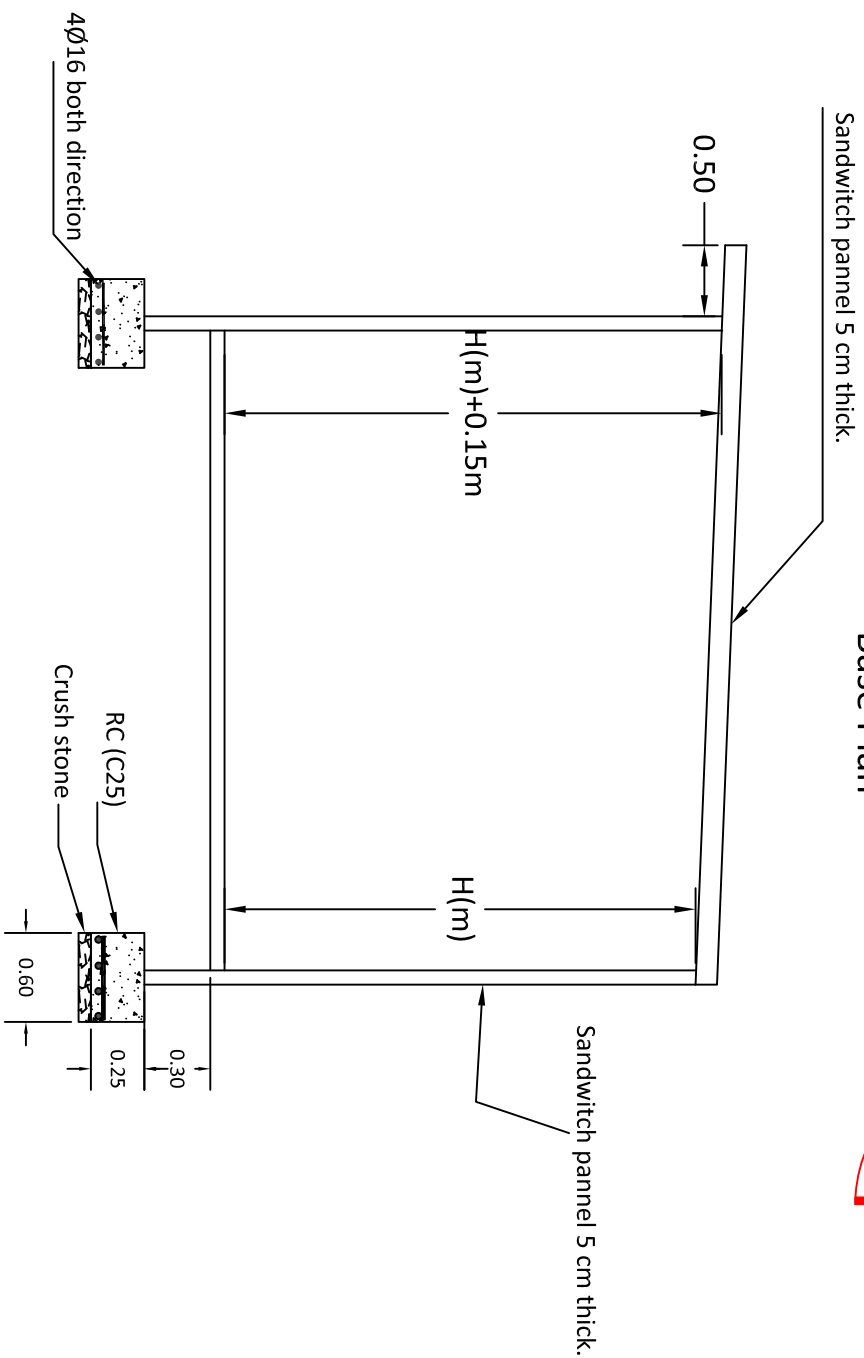


Rectangula tube 50x50x30mm @ 600mm c/c



Rectangula tube 100x50x30mm @ 600mm c/c

Square Tube 100x100x3 mm for the main frame



Typical Drawings for Renovation

Drawn by: Soran Rostam Aziz

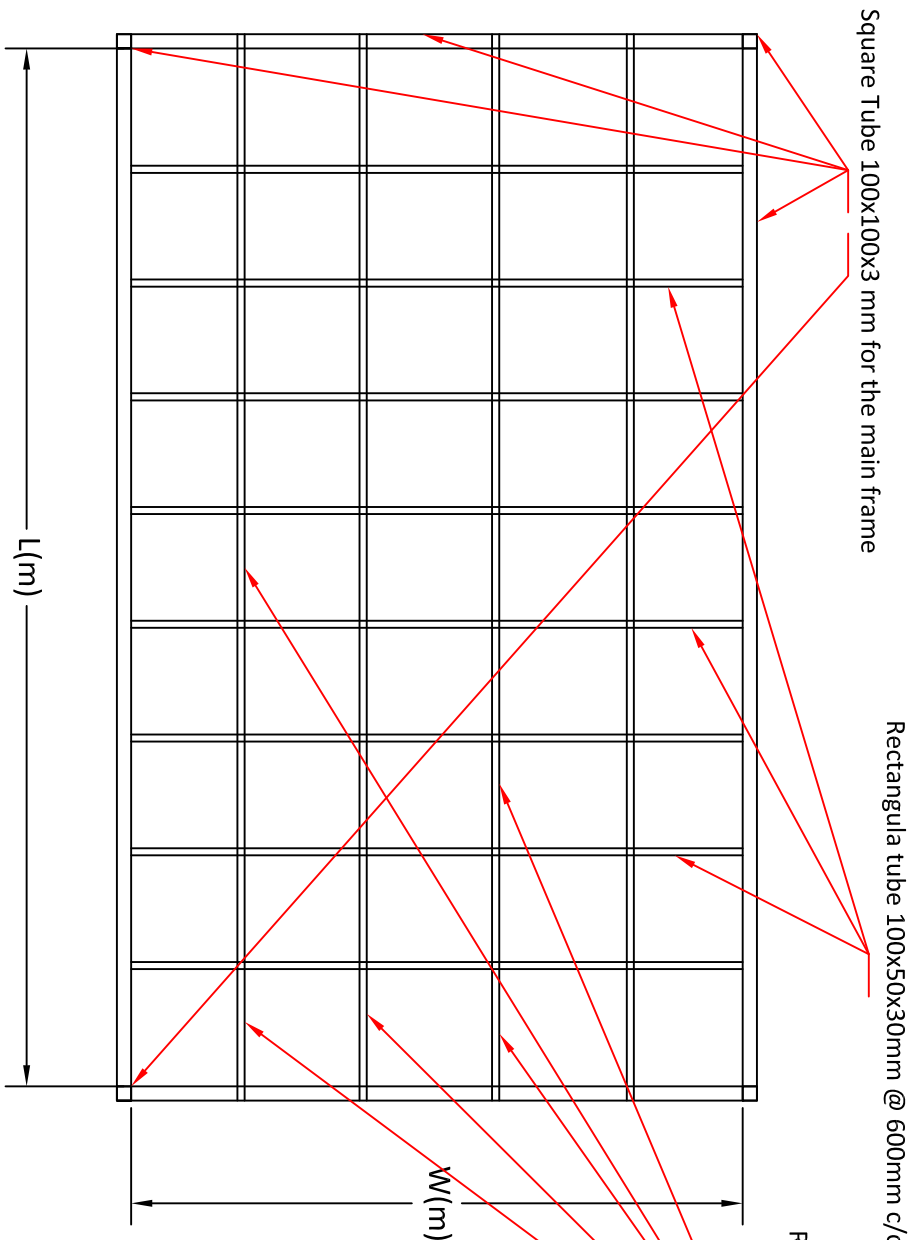
Sheet Title:

Detail of prefab cabin

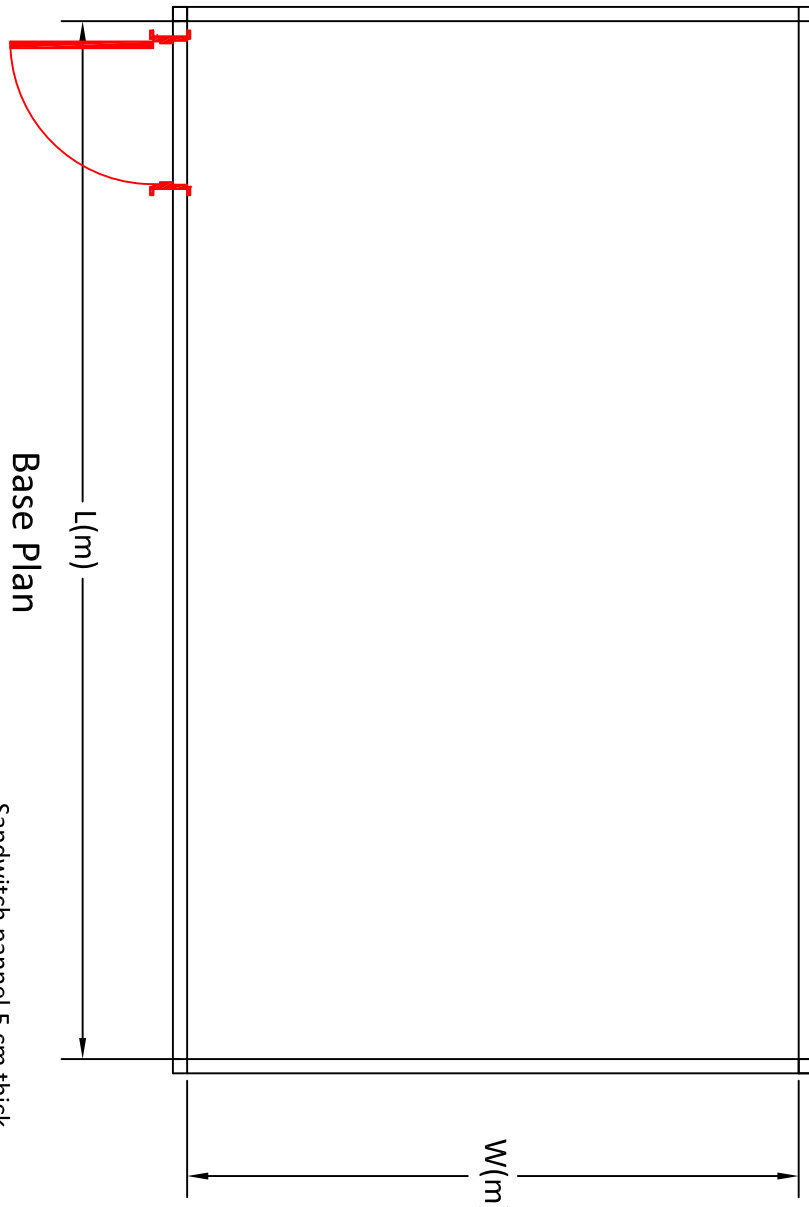
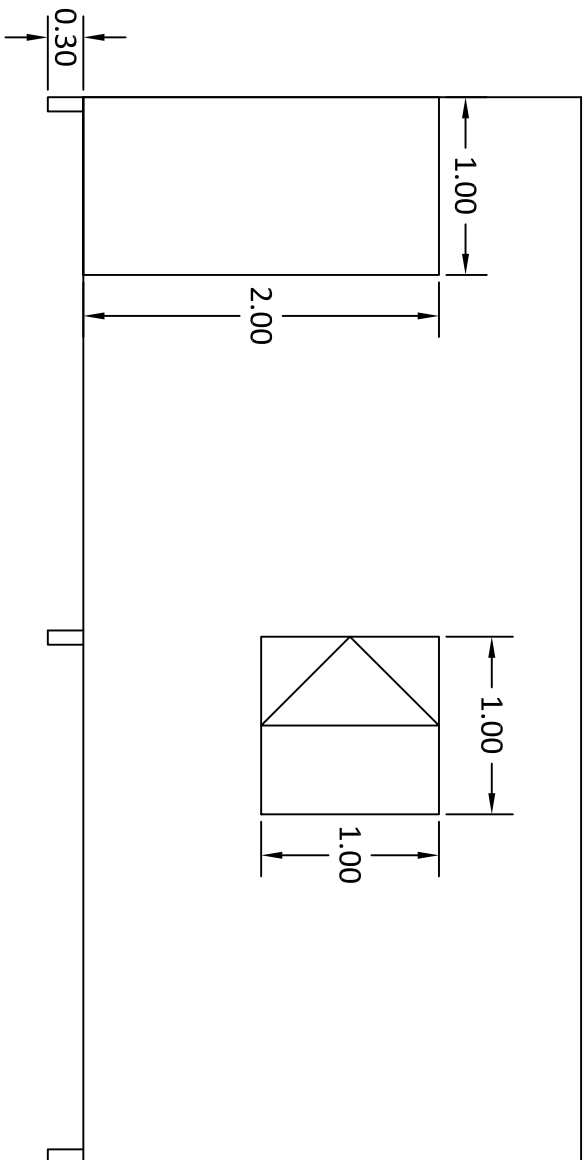
Scale: NTS

Date:

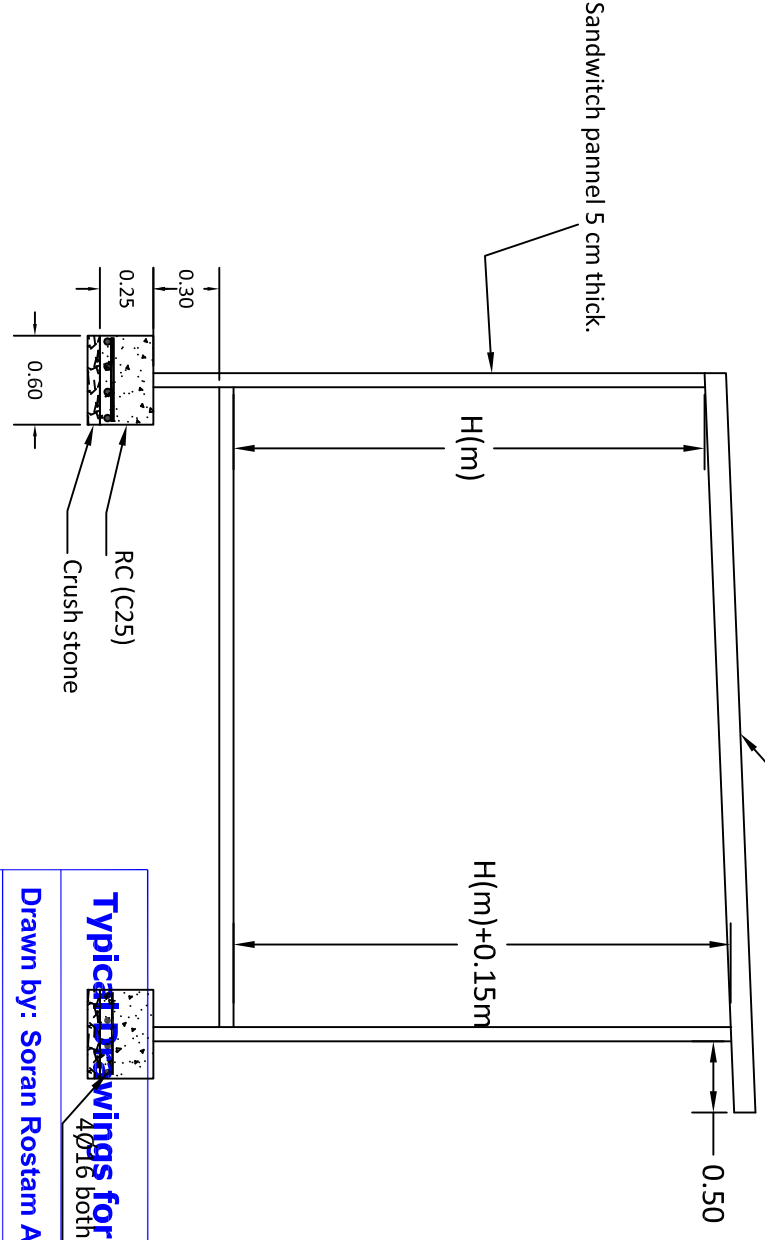
DWG No.



Base Plan



Base Plan

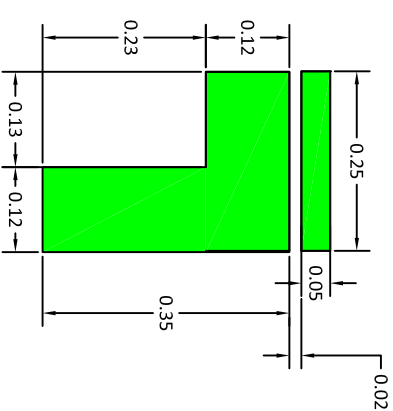
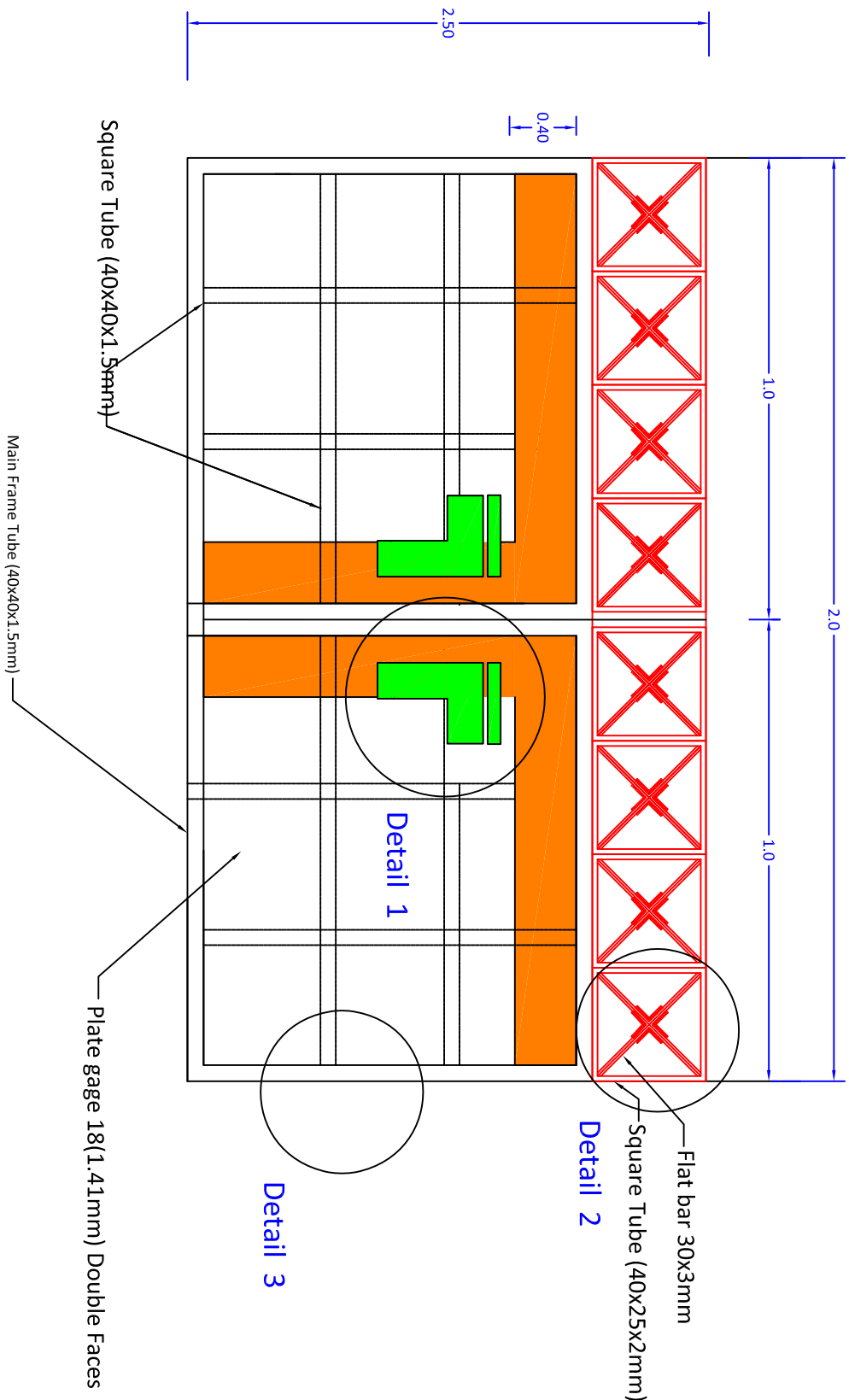


Typical Drawings for Renovation

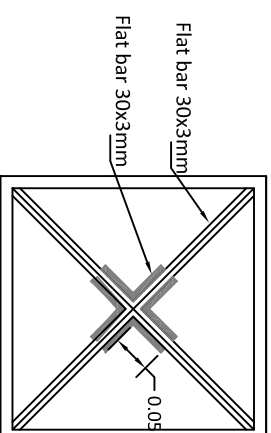
Drawn by: Soran Rostam Aziz

Sheet Title:
Detail of prefab cabin

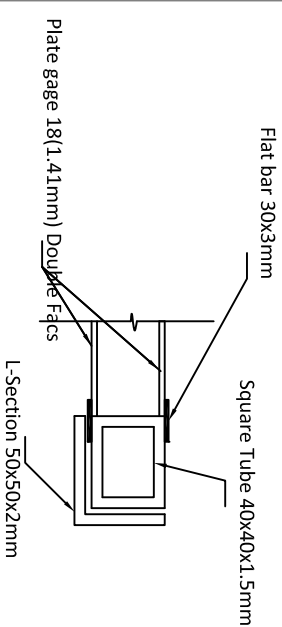
Scale: NTS	Date:	DWG No.



Detail 1



Detail 2



Detail 3

Typical Drawings for Renovation

Drawn by: Soran Rostam Aziz

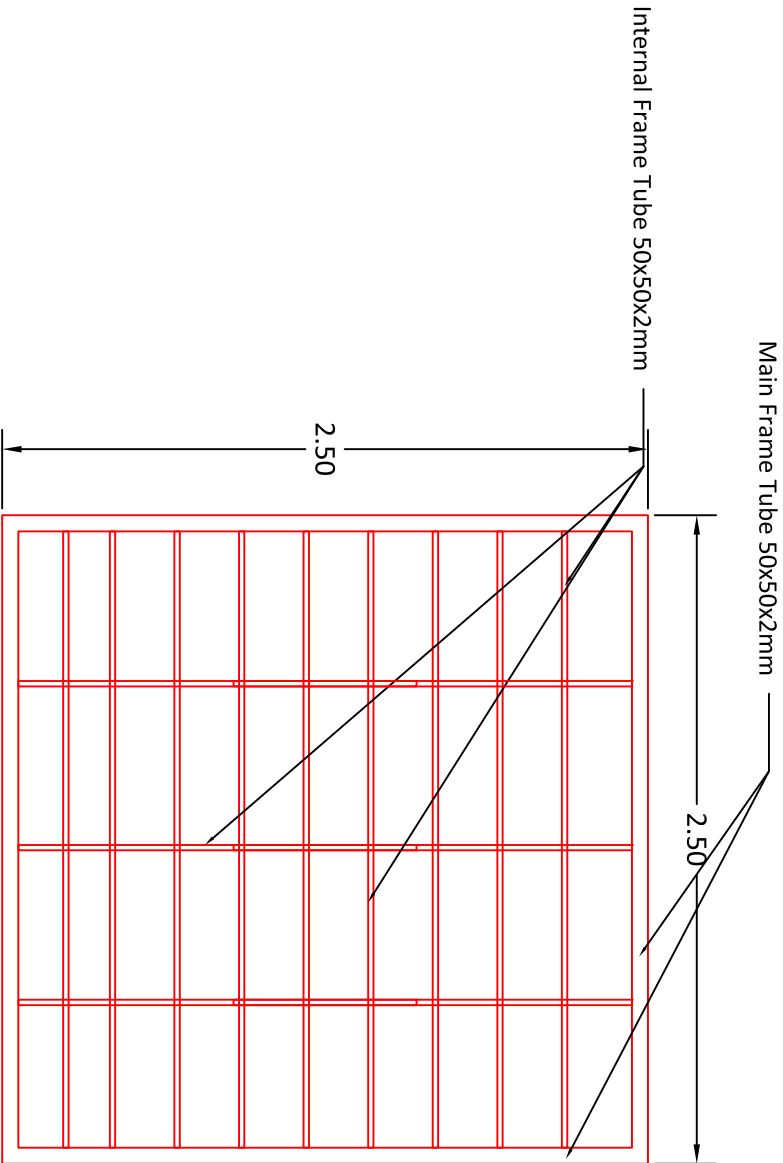
Sheet Title:

Detail of the Main Gate2.0x2.5

Scale: NTS

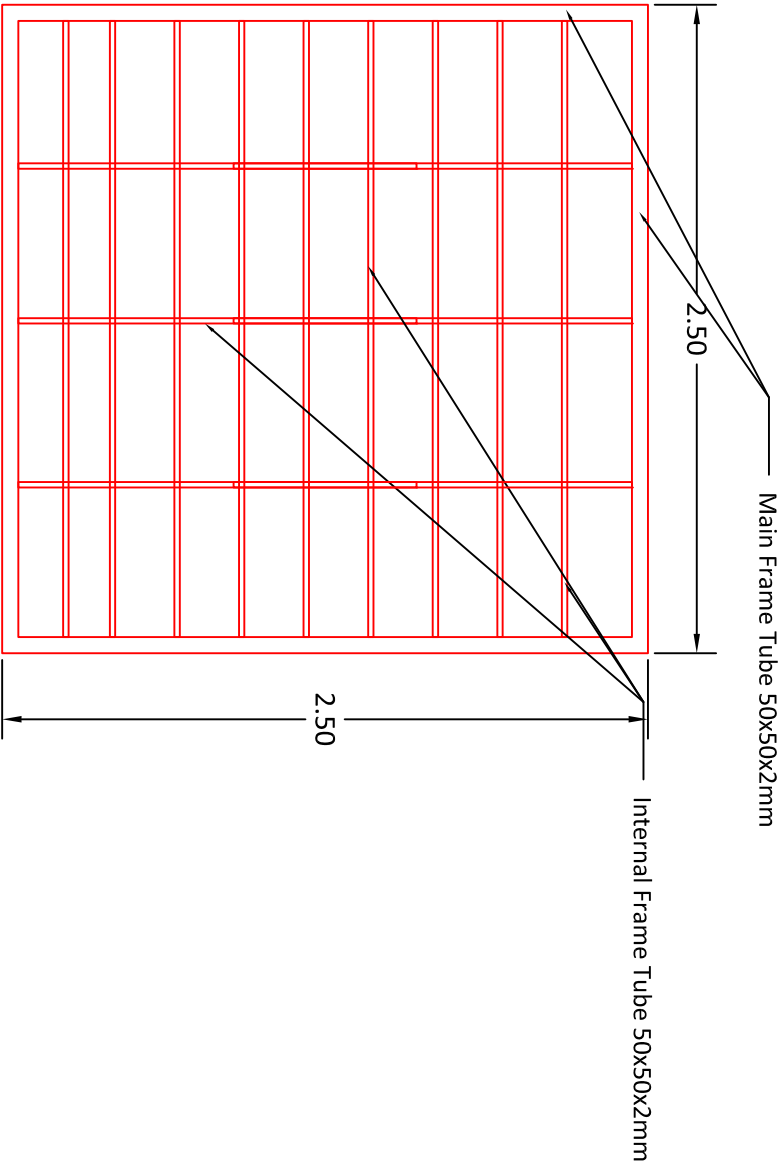
Date:

DWG No.



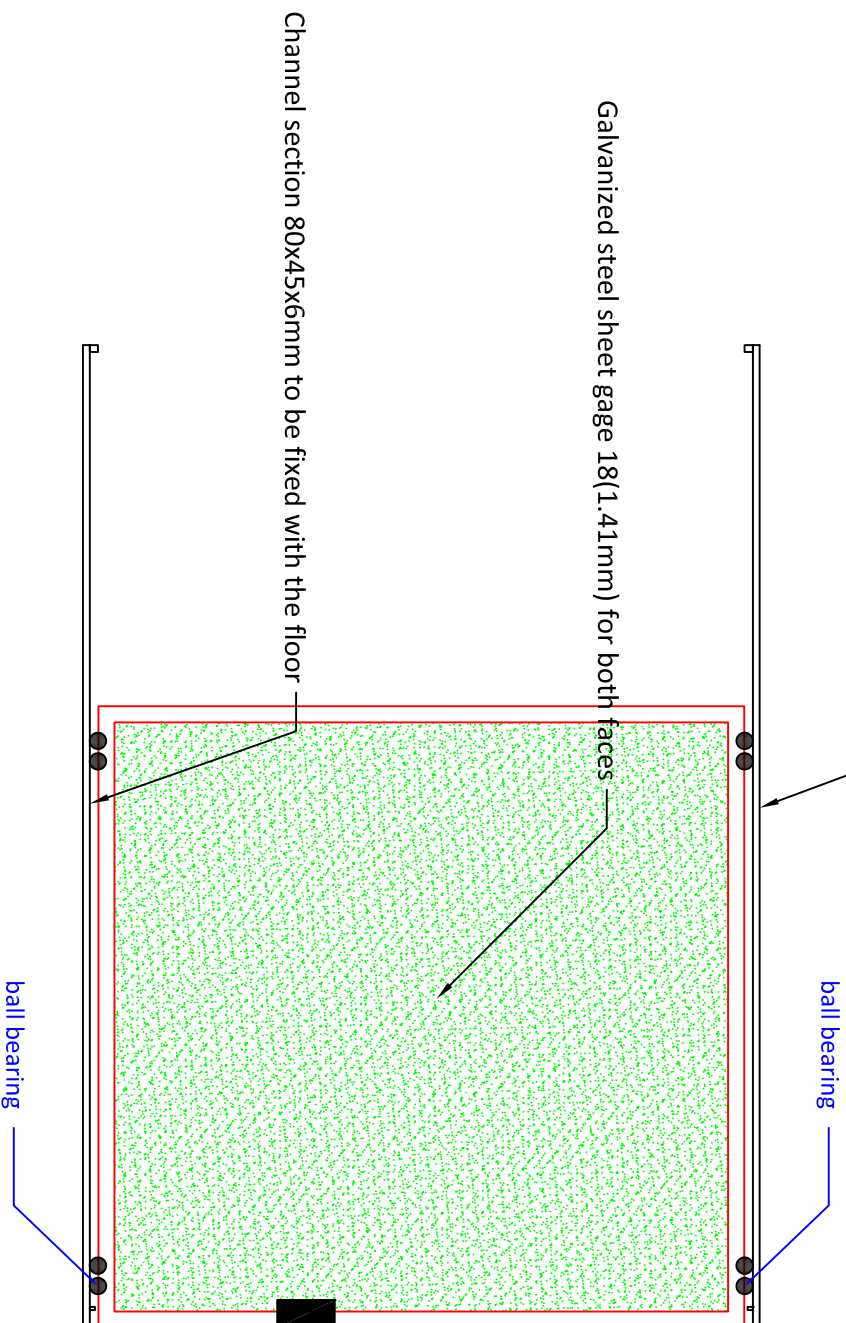
Channel section 80x45x6mm to be fixed with the walls

Main Frame of the sliding door

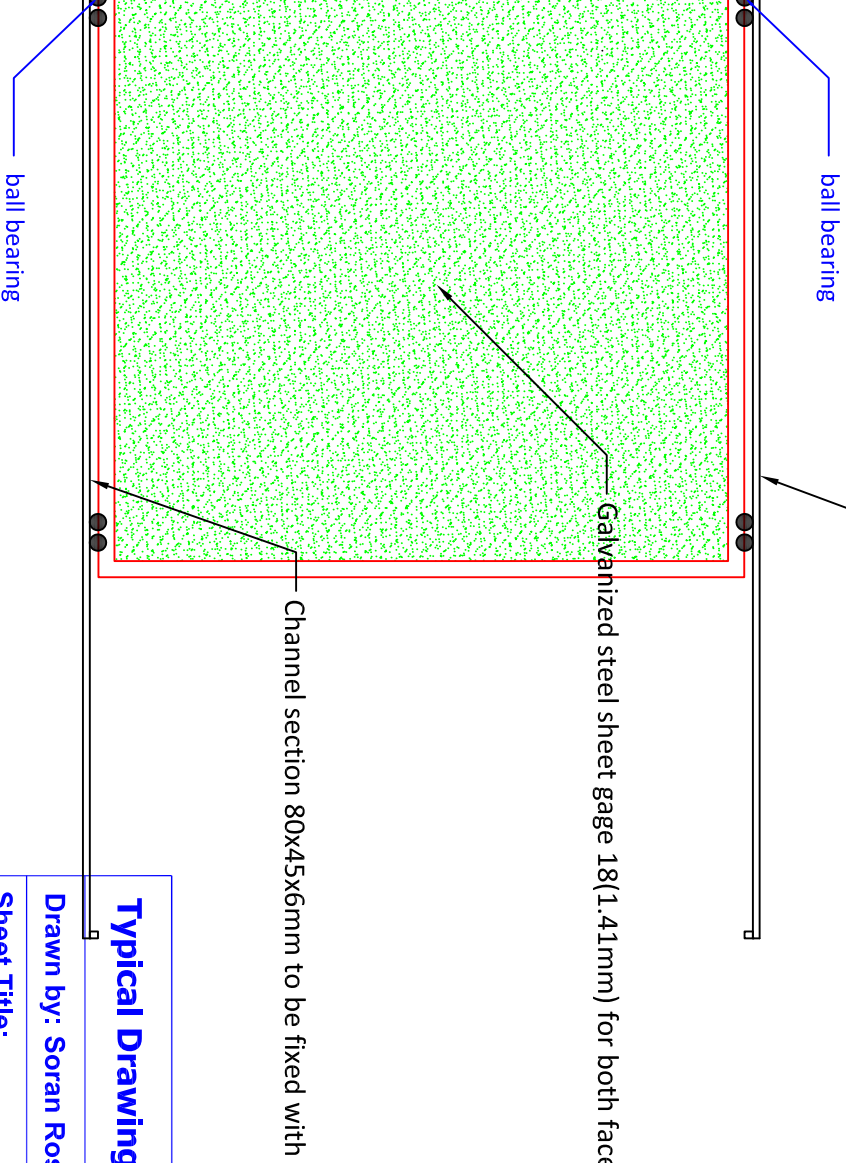


Main Frame of the sliding door

Channel section 80x45x6mm to be fixed with the walls



ball bearing



ball bearing

Typical Drawings for Renovation

Drawn by: Soran Rostam Aziz

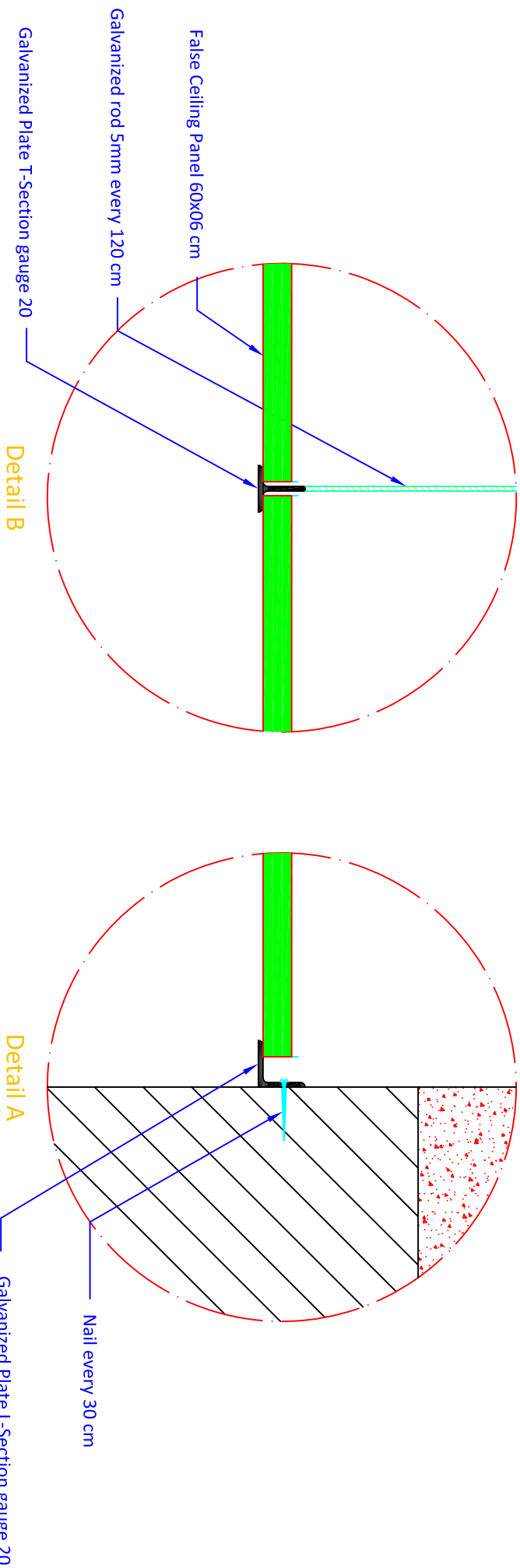
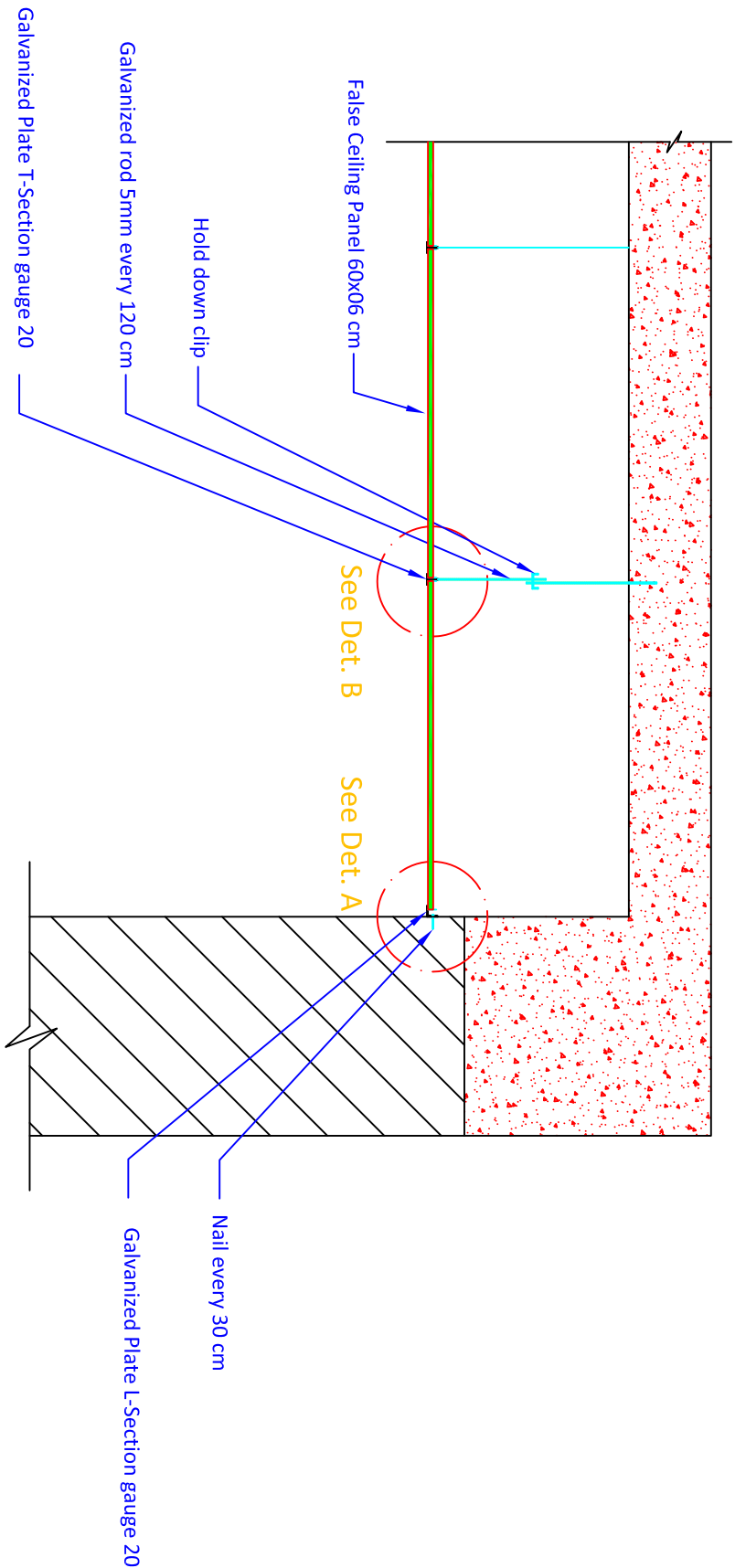
Sheet Title:

Detail of Sliding Door5.0x2.5m

Scale: NTS

Date:

DWG No.



Detail of Suspended Ceilings

Typical Drawings for Renovation		
Drawn by: Soran Rostam Aziz		
Sheet Title:		
Detail of Suspended Ceilings		
Scale: NTS	Date:	DWG No.