




Annex 1 - Tactical equipment for SWAT and BRI

Item	Technical specifications	Quantity	Unit Price USD	TOTAL PRICE - USD
Lot 1. Hook strap for assault rifles 	<ul style="list-style-type: none"> • Sling 2 points convertible into 1 point • Lockable hooks made of ultra-strong polymer • High density soft nylon belt • Buckle to loosen the sling with one hand • Brand: MAGPUL belt MS3 (OR EQUIVALENT) 	120		
Lot 2. Optical gun for assault rifles 	<p>Style: Tube Magnification: 1x Adjustment value at 100 meters: .5 " Reticle: 2 MOA dot Color reticle: red Housing material: Anodised aluminum Back-up and shock resistance: Yes Battery Type: 2 * CR2032 Length: 2.7 " Mounting: lever mount for quick mounting and dismounting on Picatinny rail Sharpness adjustment: 12 degrees of manual illumination adjustment, including 4 infrared Signature: no signature beyond 10m Weight with mounting and flip-cover: less than 150 gr Water resistance: waterproof to more than 10m</p> <ul style="list-style-type: none"> • Brand: optical sight MICRO T2 of the AIMPOINT Company (OR EQUIVALENT) 	70		

Lot 3. Physical training and racing shoes 	<ul style="list-style-type: none"> • Weight less than 300g • Lowered heel with knee and ankle protection • Removable Insole Ortholite • Shock absorption gel • Hook system: Yes • Side protection with GEL • Soft sole • Black color • Brand : ASICS model KAYANO (OR EQUIVALENT) 	120		
Transport costs to Haiti (If applicable)				
Insurance cost (if applicable)				
TOTAL ESTIMATED COST				

Lot 1 Purchase of 120 straps for the Swat and BRI long weapons
<p>Implementation plan:</p> <p>With the aim to improve the operational capacities of the GIPNH, the Intervention Group (SWAT) and the Brigade of Research and Intervention (BRI), we found that most members do not have a manner to keep their long weapon, so they hold them in hand during the operations. This adjustable strap would allow the operator the freedom to use both hands to perform other actions. Thus, whenever they need to handcuff an individual, they must place on the ground or any other side their weapons, which is unsafe and at the same time forces the police to keep an eye on their weapon while they are performing another action. It would be more professional and safe for each member of these units to have their own strap, adjusted to their size, then their operational work capacities, concentration and constant control of their armed result increased.</p> <p>After conducting research at the level of specialized teams such as GIPNH, we chose the following equipment: MAGPUL belt MS3 (OR EQUIVALENT). This belt is very versatile and it can be used on 3 points of anchorages. Equipped with material that is very resistant to weather and impacts, it is easily adjusted to the user.</p>



Delivery time : Max 1 month

Financial proposition for 120 Units :

Unit price * 120 = TOTAL USD _____

Lot 2 : Purchase of 70 optical sights dedicated to the SWAT and the HNP BRI.

Implementation plan:

With the aim to improve the operational capacities of the GIPNH, the SWAT Intervention Group and the BRI Intervention Research Brigade, there is an urgent need to add a component to their main weapons in order

to increase their rapid response and ensure precision fire.

Thus, by adding an optical sight, the officers of these units will be able to work in a safer way, their vision area will then become much larger, allowing them to see the details if there is a threat as much in the clarity as the darkness. In the work of the HNP SWAT and BRI policemen, threats are constantly on the move, this component will rapidly locate and control the threat.

It is also a piece of equipment that provides assurance to police officers if they have to shoot a rapid fire, they can quickly validate it and thus guarantee it.

With the acquisition of this essential element, officers from these teams will be able to work more efficiently and safely. So, by keeping both eyes open, they will increase their ability to make accurate shots on a moving threat or not and validate their engagement at the appropriate time. This equipment will contribute to the strengthening of operational and institutional capacities and increased professionalism within these units.

After conducting research at the level of specialized teams such as the GIPNH, **our choice was made on the following equipment: the optical sight MICRO T2 of the AIMPOINT Company (OR EQUIVALENT)**. This model is compact, lightweight and very powerful. Using by the intervention teams it is highly appreciated and very effective in the penumbra and the Red dot easily adjusts to the intensity of the ambient light.



Delivery time :

Financial proposition : Unit price USD ____ * 70 units = TOTAL USD _____

Lot 3 : Purchase of 120 pairs of physical training and racing shoes

Implementation plan:

With the aim to improve the operational capacities of the GIPNH, the SWAT and the Intervention and Research Brigade (BRI), it was evidenced that police officers suffer injuries to the knees while maintaining their daily physical fitness, which render them unfit to be operational. They use combat boots for all physical training and even for short and long distance races.

It would be more appropriate to provide them with quality shoes to avoid these injuries and to enable them to better perform in their work as an excellent physical condition is required.

It would be more appropriate to provide them with special running shoes for people who are looking for performance, comfort with a long foot support, and practice daily exercise jogging avoiding injuries to Knees and back.

After research, the specialized team such GIPNH **our choice was made on the following equipment shoes: ASICS model KAYANO (OR EQUIVALENT)** racing shoe. This highly durable model has excellent foot support and is designed for all sized people. The area or shocks created during jogging is designed with a GEL that absorbs the ground impacts of each step. These top quality shoes can prevent injuries and will allow them to



better perform in their daily work.

Delivery time : 1 month

Financial proposition :

Unit price * 120 pairs = TOTAL USD

SPECS ASICS KAYANO 23

- nylon
- semelle caoutchouc
- gel injecté

The technology in this product



FLYTEFOAM®

FLYTEFOAM® technology provides exceptional bounce back and responsiveness no matter the distance, utilizing organic super fibers to help reduce packing out that traditionally happens with softer, low density foams.



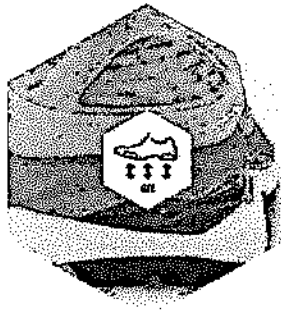
FluidFit

ASICS FluidFit® upper technology combines multi-directional stretch mesh with stretch reinforcements that adapt to the athlete's foot, creating a truly customized glove-like fit.



FluidRide

FluidRide® provides the ultimate combination of bounce back and cushioning properties with reduced weight and exceptional durability.



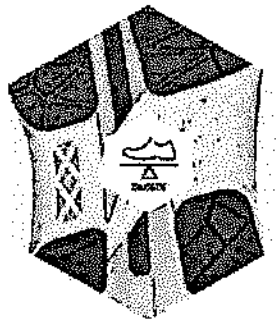
Rearfoot and Forefoot GEL® Cushioning System

Attenuates shock during impact and toe-off phases, and allows movement in multiple planes as the foot transitions through the gait cycle.



Guidance Line®

Vertical flex groove decouples the tooling along the line of progression for enhanced gait efficiency.



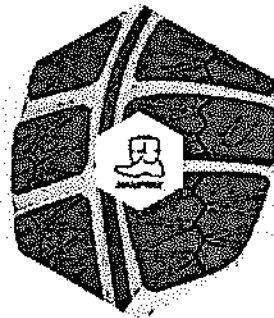
Trusstic System®

Reduces the weight of the sole unit while retaining the structural integrity of the shoes.



Impact Guidance System (I.G.S.®)

ASICS® design philosophy that employs linked componentry to enhance the foot's natural gait from heel strike to toe-off.



DuraSponge® Outsole

A blown AHAR® rubber compound for enhanced cushioning and durability in the forefoot.



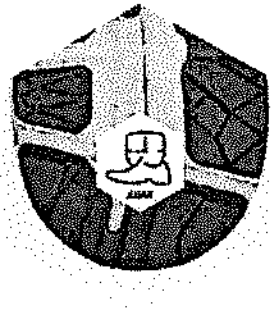
ComforDry™ Sockliner

This premium sockliner features higher rebound properties while providing excellent moisture management and a high-level of breathability.



APMA Seal of Acceptance

Designated shoes have the American Podiatric Medical Association (APMA) Seal of Acceptance.



AHAR®

Acronym for ASICS® High Abrasion Rubber. Placed in critical areas of the outsole for exceptional durability.



DuoMax® Support System

A dual-density midsole system positioned to enhance support and stability, positioned sport-specifically.