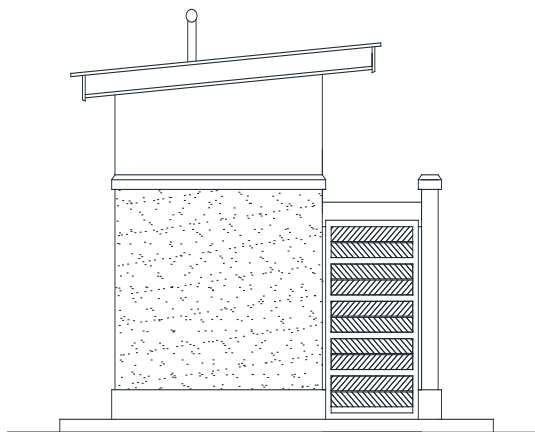
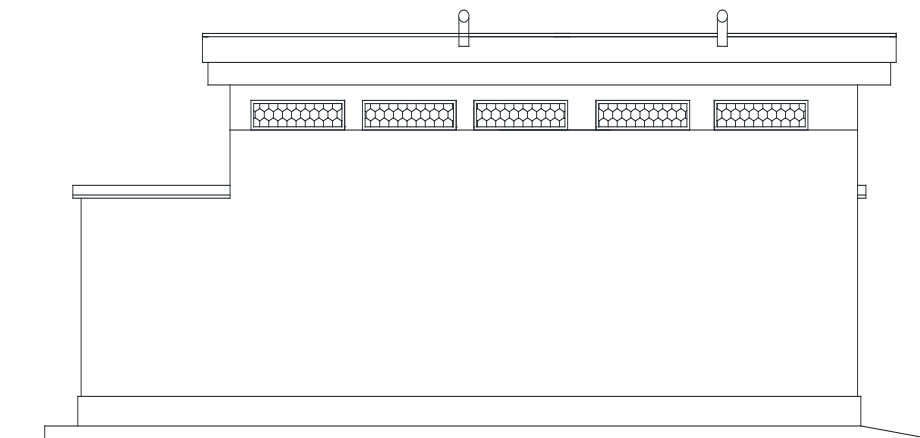


UNITED NATION DEVELOPMENT PROGRAMME JUBA, SOUTH SUDAN	PROJECT: CONSTRUCTION OF 05 STANCE VIP PIT LATRINE AT POLICE TRAINING INSTITUTE IN RAJAF	Designed by: UNDP	Location Central Equatoria State Juba		No:	Date	Revision
		Drawn by: UNDP	Revision	Date: August 2017			
ACCESS TO JUSTICE AND RULE OF LAW	DETAILS  SECTION X-X	Approved for:  Implementation	Scale: NTS	Drawing No: UNDP JB - 001			
				Sheet No. 03			

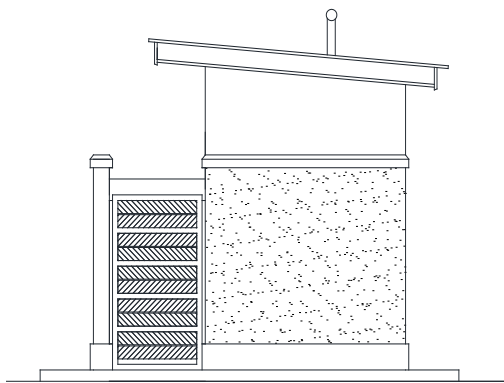


COMMON SIDE VIP ELEVS

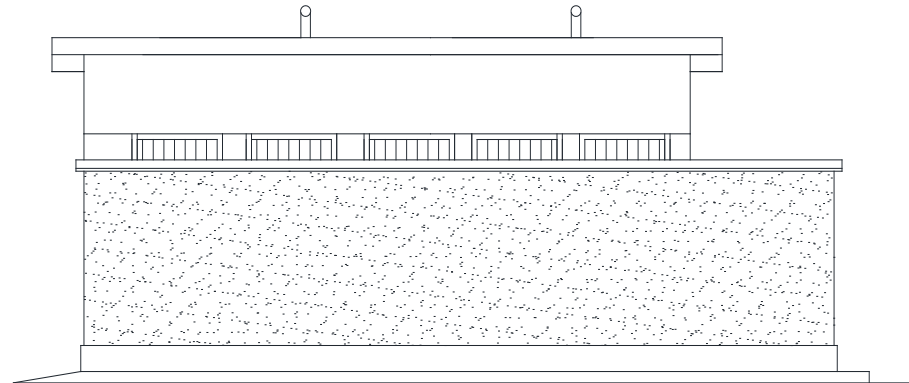


REAR VIP ELEV(Scale 1:100)

UNITED NATION DEVELOPMENT PROGRAMME JUBA, SOUTH SUDAN	PROJECT: CONSTRUCTION OF 05 STANCE VIP PIT LATRINE AT POLICE TRAINING INSTITUTE IN RAJAF	Designed by: UNDP	Location Central Equatoria State Juba		No:	Date	Revision
		Drawn by: UNDP	Revision	Date: August 2017			
ACCESS TO JUSTICE AND RULE OF LAW	DETAILS: REAR ELEVATION AND LEFT SIDE ELEVATION	Approved for: Implementation	Scale: NTS	Drawing No: UNDP JB - 001			
				Sheet No. 04			



COMMON SIDE VIP ELEVS



FRONT VIP ELEV(Scale 1:100)

UNITED NATION DEVELOPMENT PROGRAMME JUBA, SOUTH SUDAN	PROJECT: CONSTRUCTION OF 05 STANCE VIP PIT LATRINE AT POLICE TRAINING INSTITUTE IN RAJAF	Designed by: UNDP	Location Central Equatoria State Juba	No:	Date	Revision
		Drawn by: UNDP	Revision	Date: August 2017		
ACCESS TO JUSTICE AND RULE OF LAW	DETAILS: FRONT ELEVATION AND RIGHT SIDE ELEVATION	Approved for: Implementation	Scale: NTS	Drawing No: UNDP JB - 001		
				Sheet No. 05		