

UN Darfur Fund

Promote Reconciliation and Coexistence for Sustainable Peace in Darfur

NORTH DARFUR KABKABYA LOCALITY

COMMUNITY CENTER - STANDARD MODEL

February 2016

*Bahauddin Ibrahim*

+249 (0) 9 112 13 334 / +249 (0) 1 141 97 005  
[bahaalim@gmail.com](mailto:bahaalim@gmail.com)

محطة  
كالماتوق



## CEILING FINISHES

--	--

- [illegible]

1	CERAMIC TILE
---	--------------

- #### SKIPTING

--	--

- |  |                |
|--|----------------|
|  | FLOOR FINISHES |
|--|----------------|






1	TERAZZO TILE
---	--------------

- |  |  |
|--|--|
|  |  |
|--|--|

	S	N
E		
S		

\_\_\_\_\_

S	Desc
---	------

<i>S</i>	<i>Description</i>
	WALL MOUNTED KDK FA
	FAN REGULATOR
	SOCKET OUTLET 13A SOCKET OUTLET
	WALL MOUNTED LAMP
	DOUBLE ONE WAY SWIC

Promote Reconciliation  
and Coexistence  
for Sustainable

---

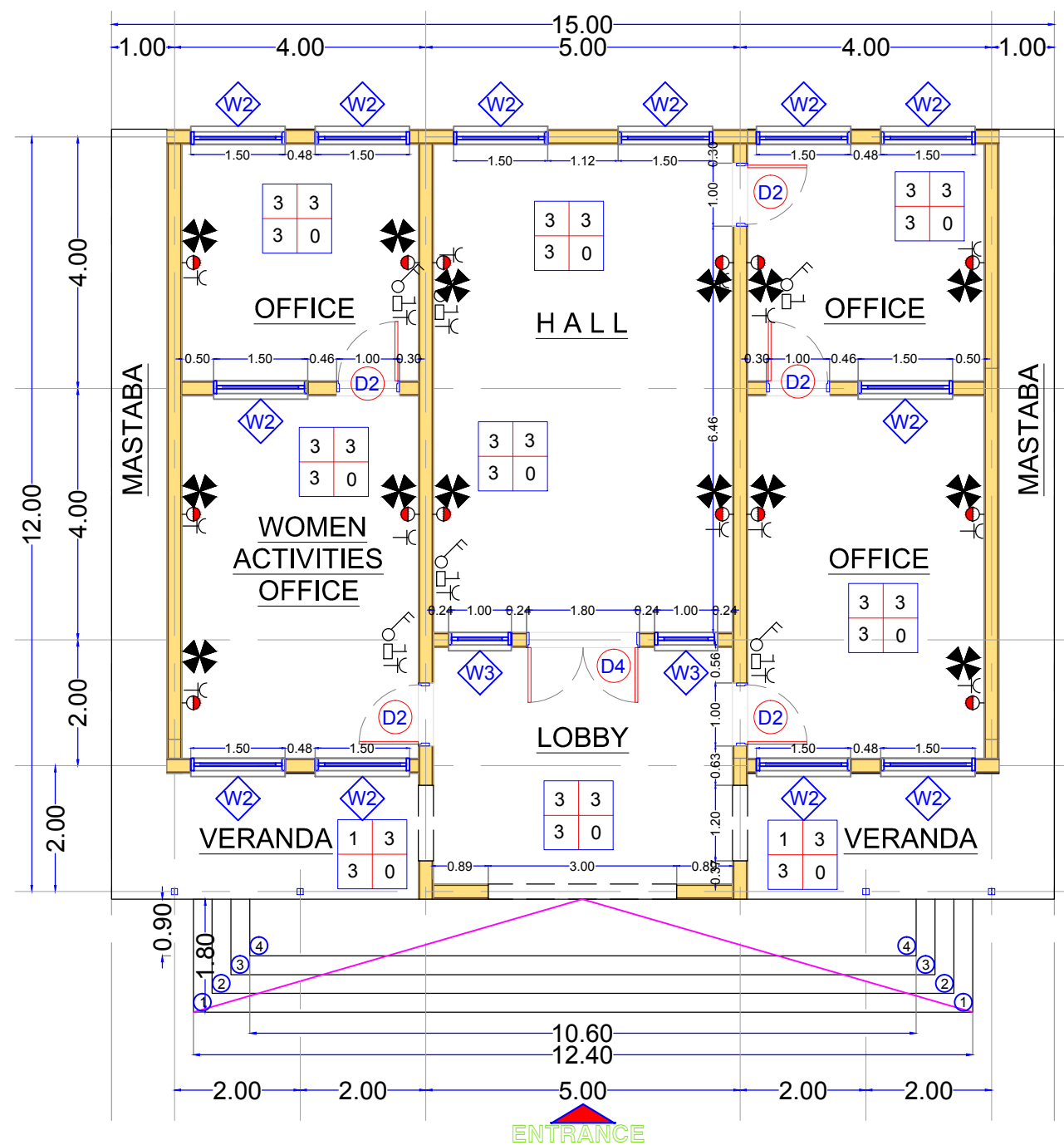
\_\_\_\_\_

UNDP (with UN Women)

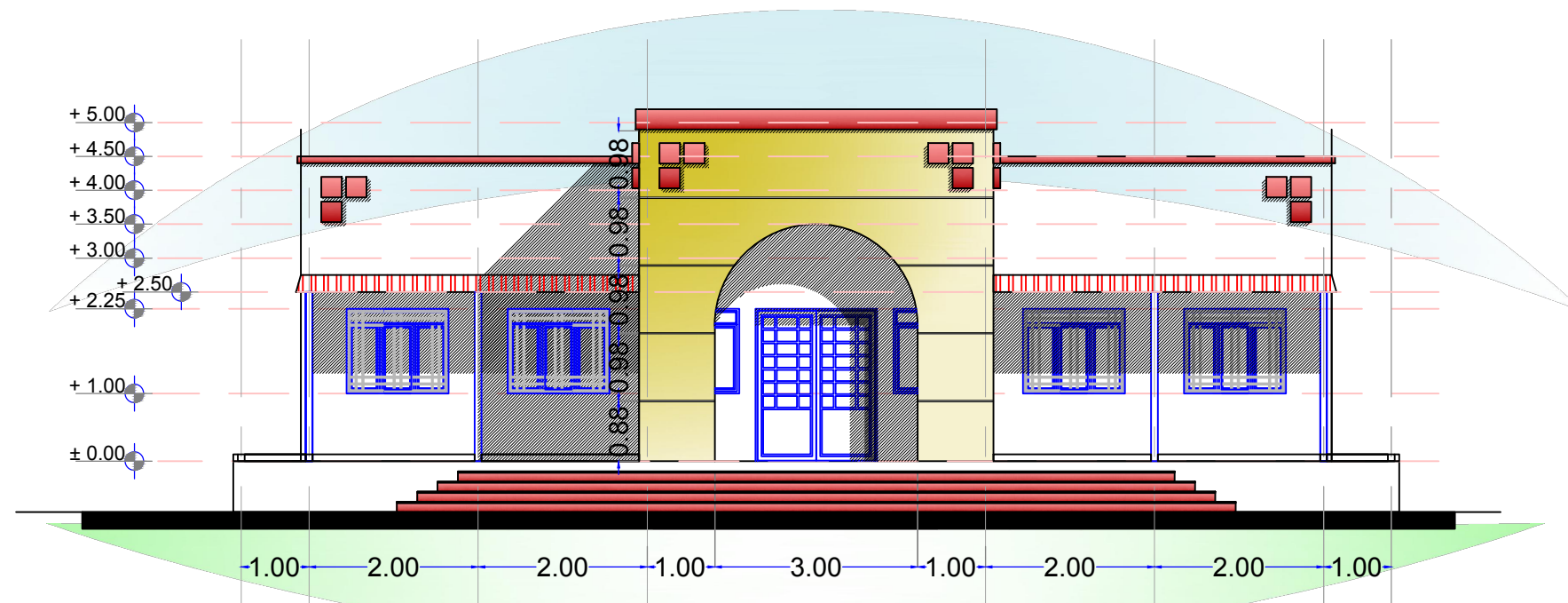
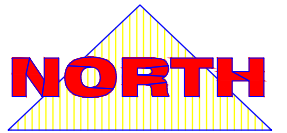
[illegible]

1

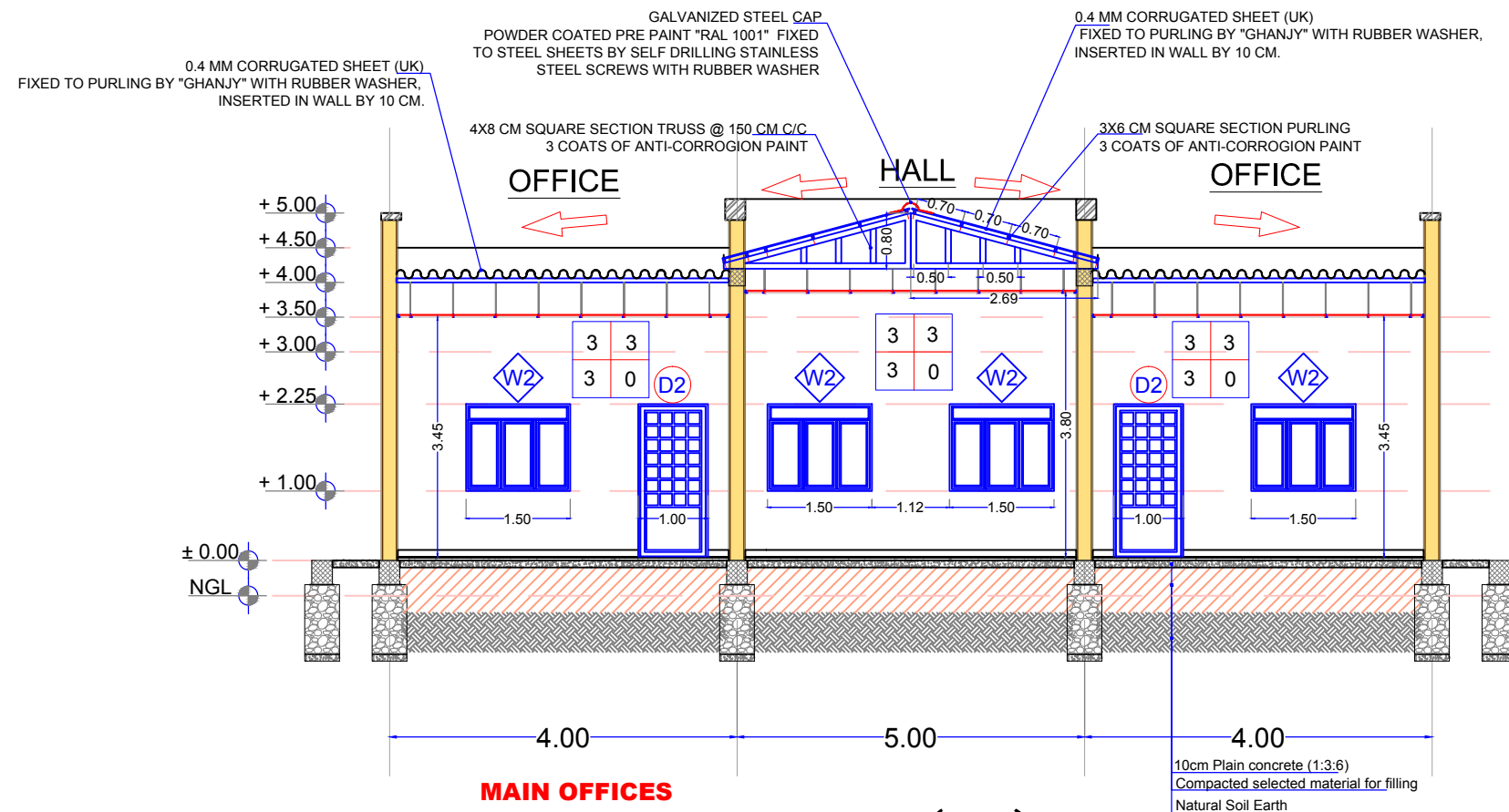
Page 10 of 10

[illegible]

# Main Building



ELEVATION MAIN VIEW  
Main Building



MAIN OFFICES  
DETAILED SECTION (AA)

#### FINISHING SCHEDULE

CEILING FINISHES	
1	US ZINC SHEET (0.5MM)
2	OIL PAINT
3	FABRIC TEXTILE SHEETS
WALL FINISHES	
1	CERAMIC TILES
2	MARBLE TILES
3	3 COATS OF POMASTIC ON C/S PLASTER
4	ROUGH PLASTER
SKIRTING	
1	TERAIZZO TILES
2	CERAMIC TILES
3	MARBLE TILES
4	GRANITE TILES
FLOOR FINISHES	
1	TERAIZZO TILES
2	CERAMIC TILES
3	FAIR FACE CEMENT/ SAND FINISH ON PC

CEILING FINISHES	C	W	WALL FINISHES
FLOOR FINISHES	F	S	SKIRTING



#### ELECTRICAL KEY

S	Description
56 INCH CEILING KDK FAN	
FAN REGULATOR	
SOCKET OUTLET 13A	
WALL MOUNTED LAMP	
DOUBLE ONE WAY SWITCH	

**UN Darfur Fund**  
Promote Reconciliation  
and Coexistence  
for Sustainable  
Peace in Darfur  
Foundational and Short Term Activities (FaST)

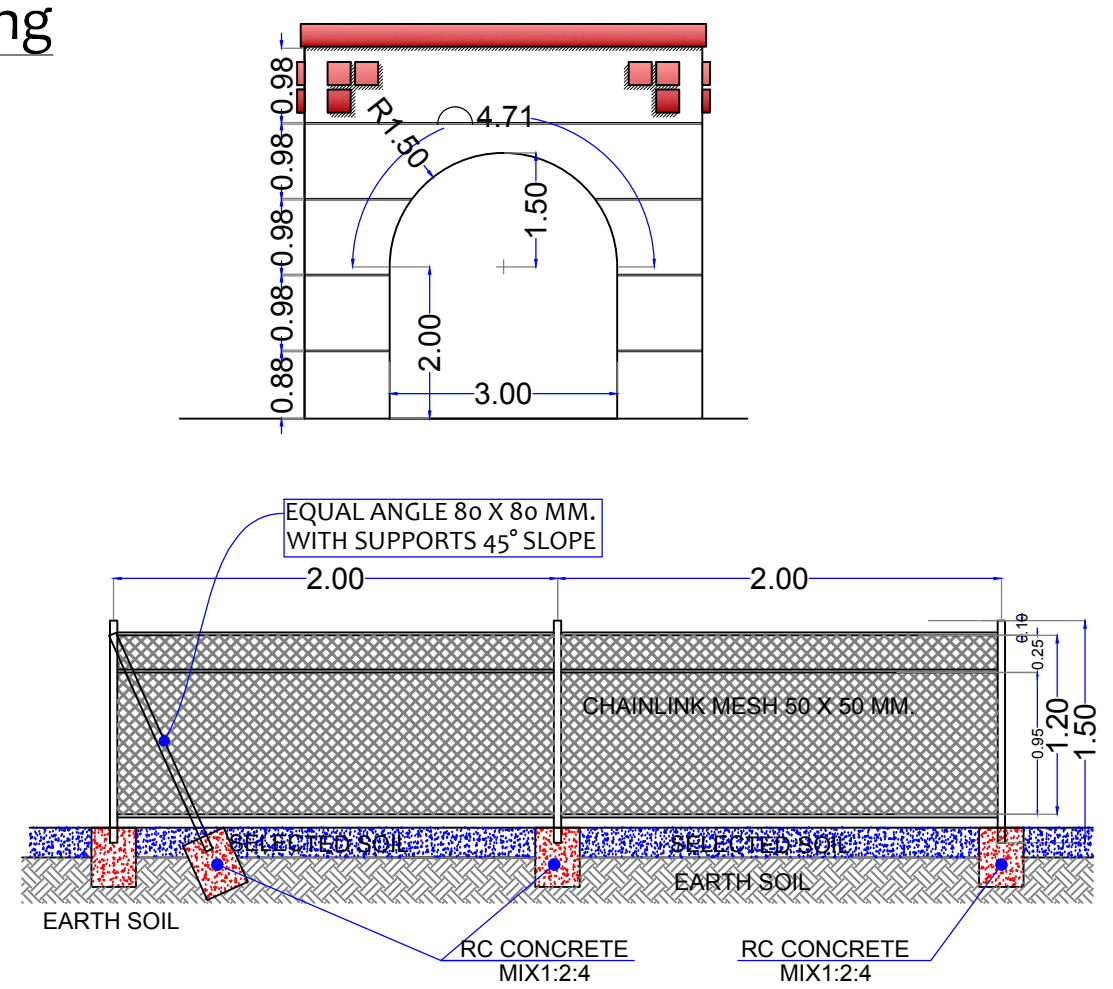
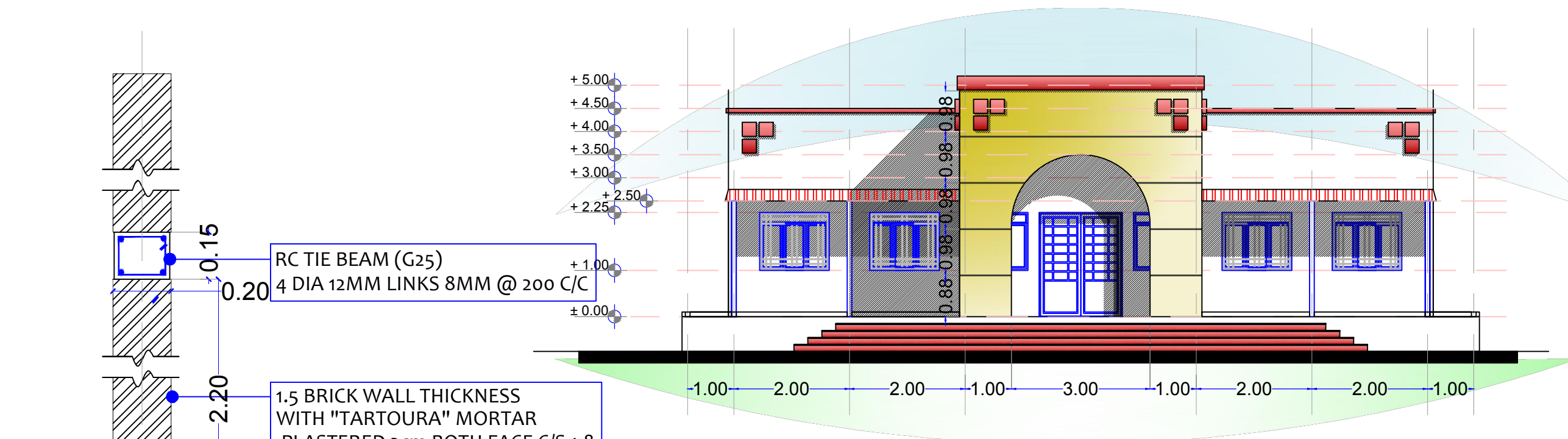
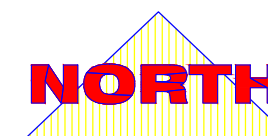
**STANDARD MODEL  
COMMUNITY PEACE CENTER**

Lead Agency:  
**UNDP (with UN Women)**

**MODEL (B)** FEB 2016

Design By:  
**Bahauddin Ibrahim**  
+249 (0) 9 112 13 354 / +249 (0) 1 141 97 005  
bahauddin@gmail.com

**A2**



**UN Darfur Fund**  
Promote Reconciliation  
and Coexistence  
for Sustainable  
Peace in Darfur  
Foundational and Short Term Activities (FaST)

**STANDARD MODEL  
COMMUNITY PEACE CENTER**  
FOR TENDERING

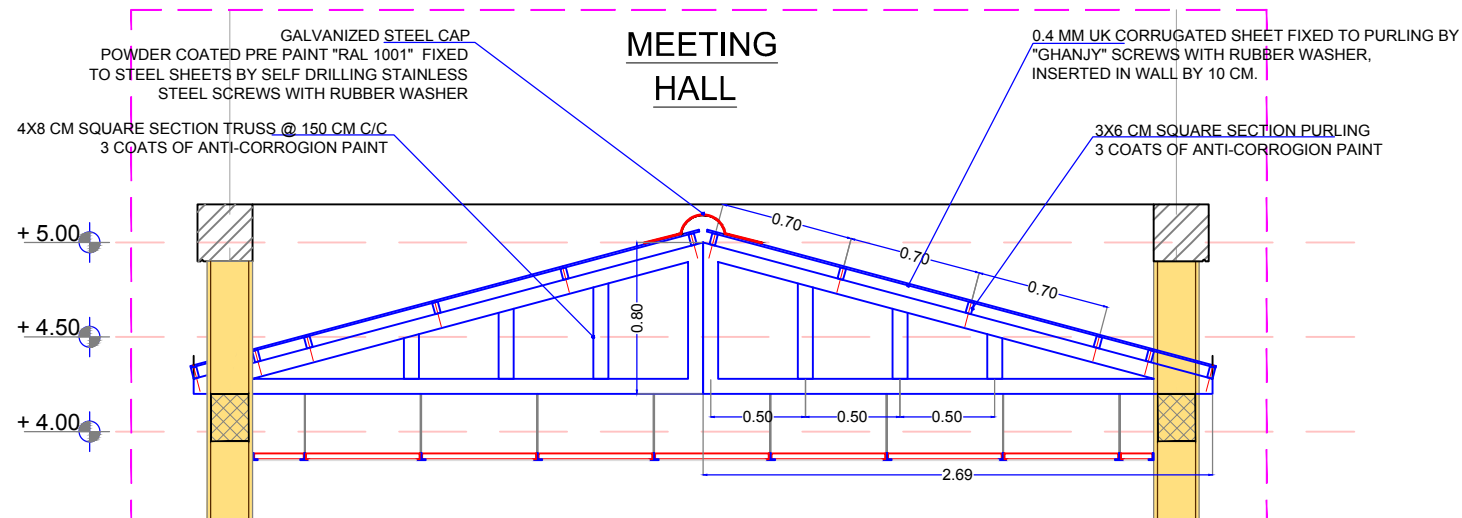
Lead Agency:  
UNDP (with UN Women)

**MODEL (B)**

FEB  
2016

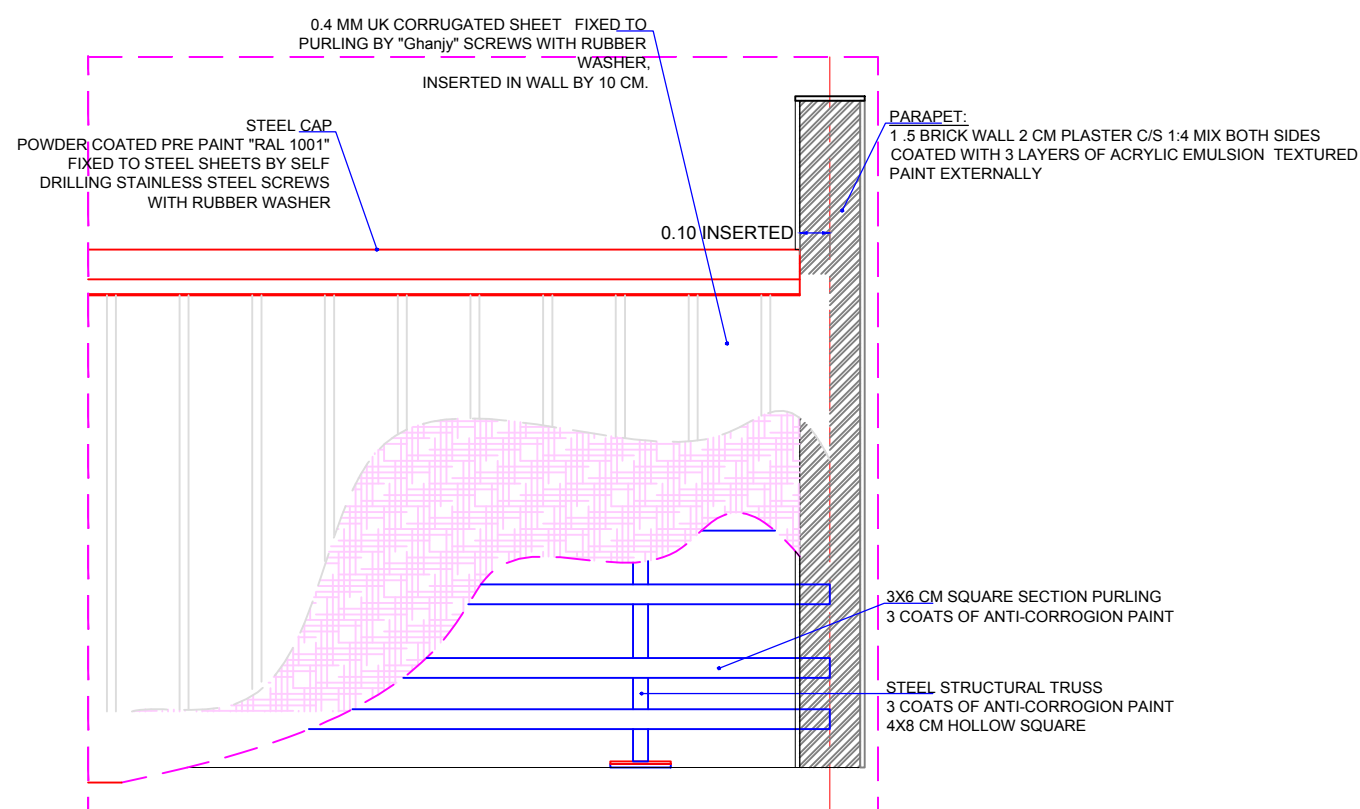
Design By:  
**Bahauddin Ibrahim**  
+249 (0) 9 112 13 334 / +249 (0) 1 141 97 005  
bahauddin@icmi.com

**A3**



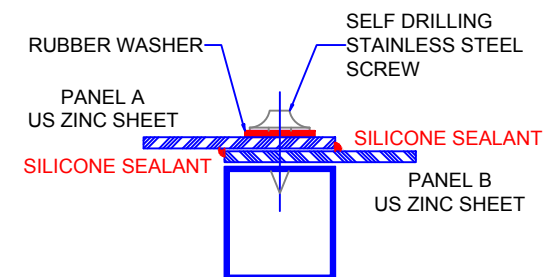
## STEEL TRUSS SECTION

Scale NTS



## STEEL TRUSS DETAILS

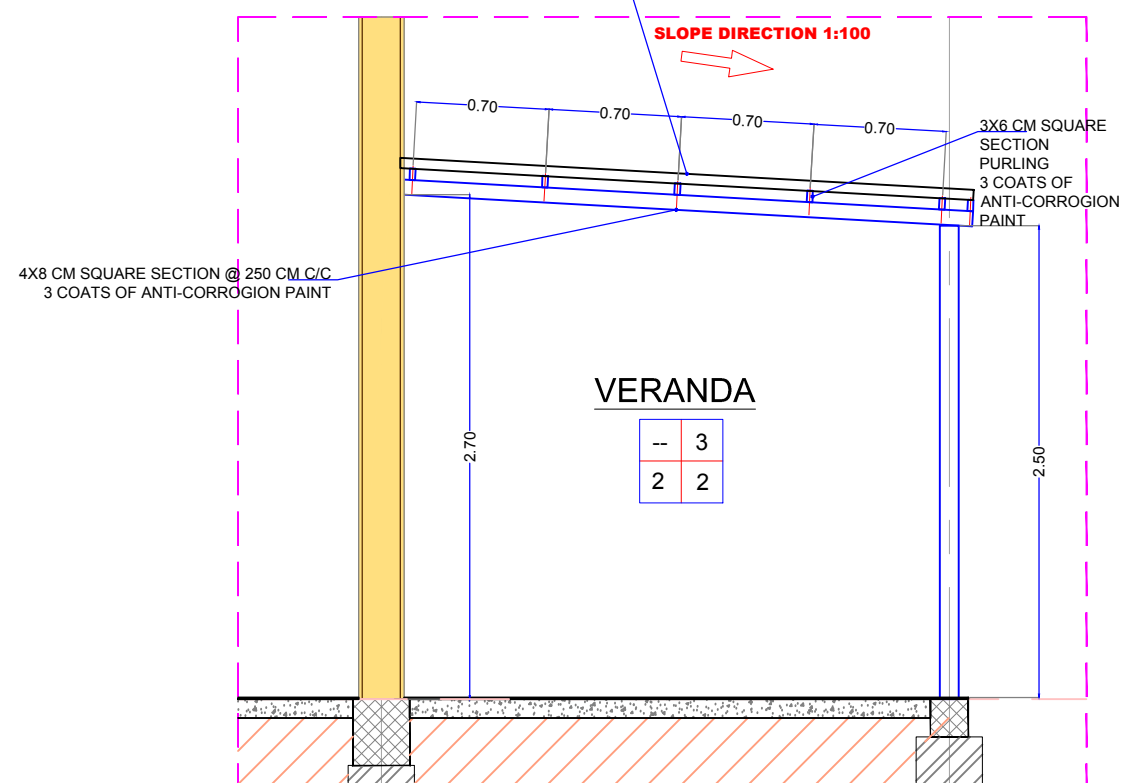
Scale NTS



## WATER TIGHT ENLARGED DETAIL

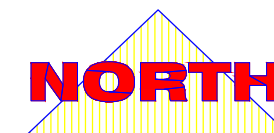
Scale NTS

0.4 MM UK CORRUGATED SHEET FIXED TO PURLING BY  
"GHANJY" SCREWS WITH RUBBER WASHER,  
INSERTED IN WALL BY 10 CM.



## VERANDA SECTION

Scale NTS



**UN Darfur Fund**  
Promote Reconciliation  
and Coexistence  
for Sustainable  
Peace in Darfur  
Foundational and Short Term Activities (FaST)

**STANDARD MODEL  
COMMUNITY PEACE CENTER**  
FOR TENDERING

Lead Agency:  
UNDP (with UN Women)

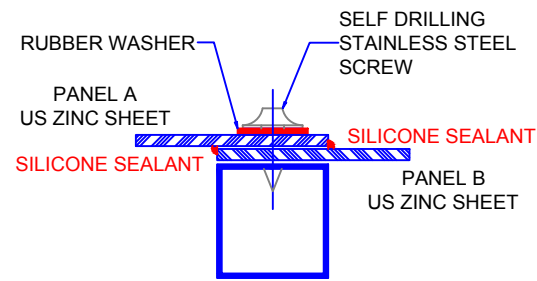
**MODEL (B)**

FEB  
2016

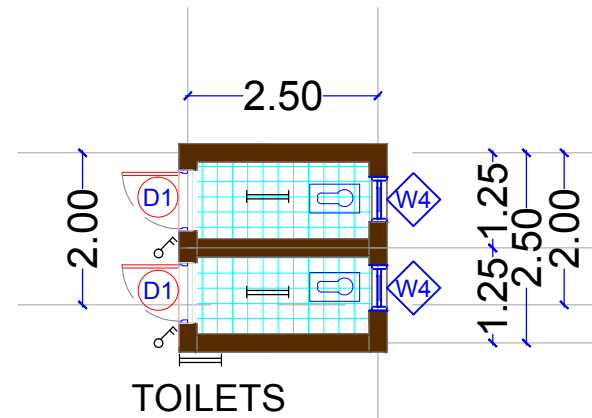
Design By:  
**Bahaudin Ibrahim**  
+249 (0) 9 112 13 3347 +249 (0) 1 141 97 005  
bahaudin@gmail.com

**A4**





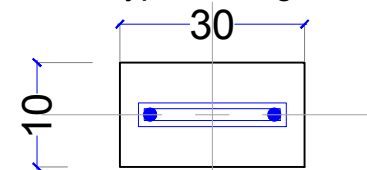
**Standard Details**  
**Water Tight**  
Scale NTSA3



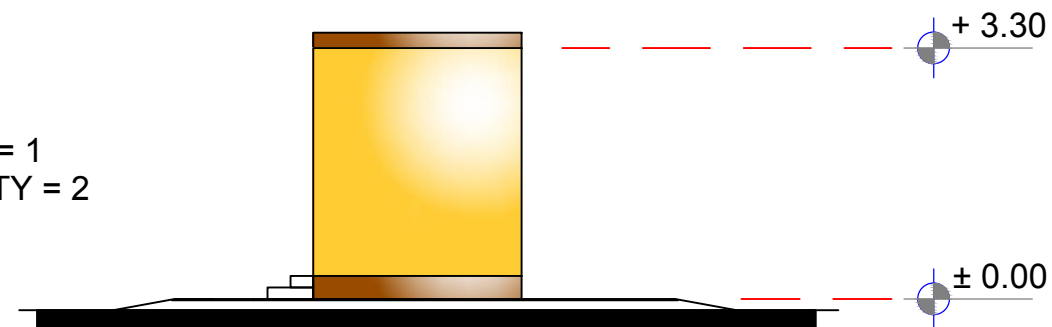
**QUANTITIES : (FOR LATRINE ROOF)**

6 m length 3 X 6 Rectangular Steel Tube	3
6 m length 4 X 8 Rectangular Steel Tube	0
6 m. length 3 inch dia. steel pipe	0
US Zinc Sheet 6 m. Length	9 Sq.M.
Self Drilling Stainless Steel Screws	500

Above Doors Typical Length = 2.50 m. QTY = 1  
Above Windows Typical Length = 0.80 m. QTY = 2

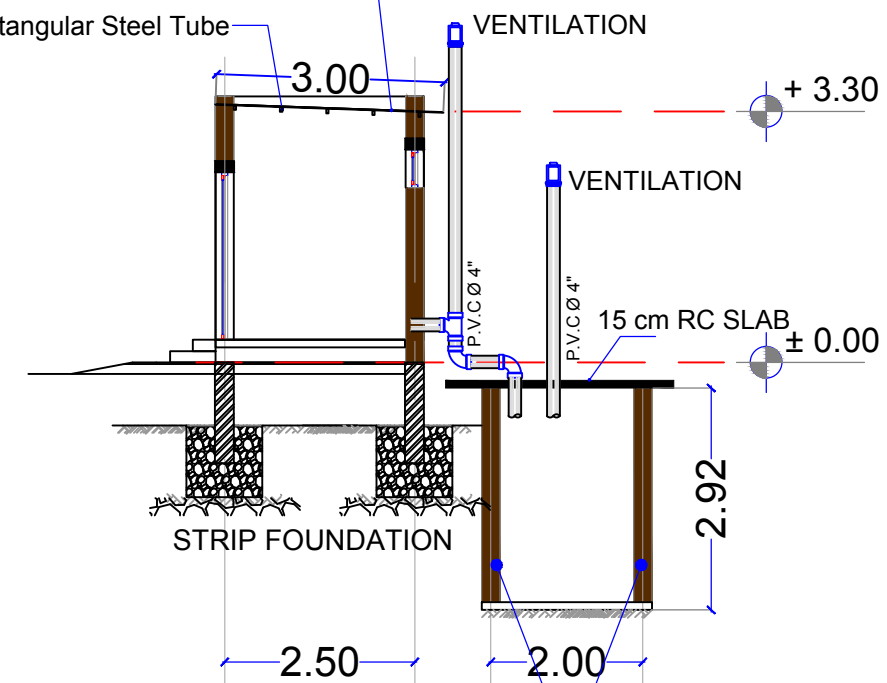


**FOR LATRINE**  
**RC. Lintel Beam**  
Scale NTSA3

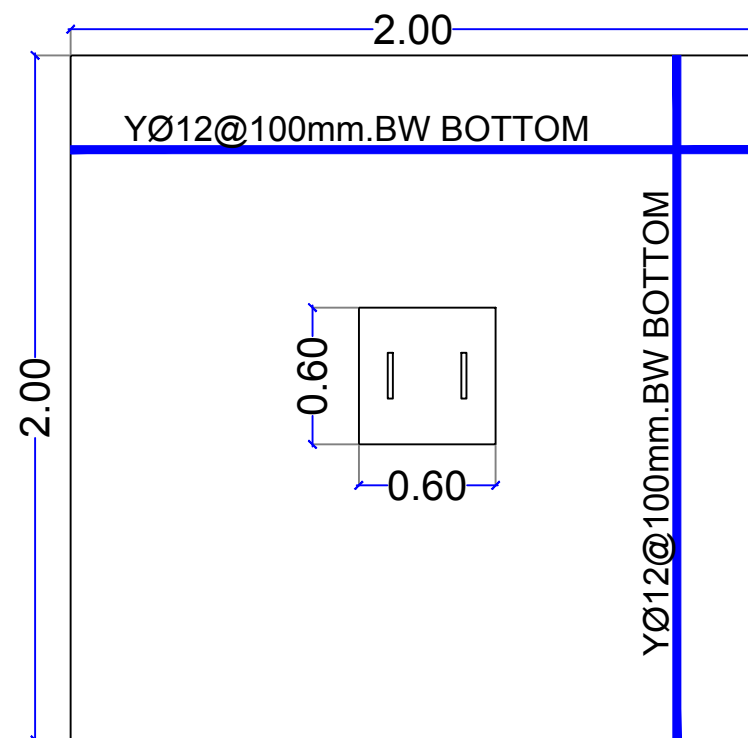


**Front View**  
**Elevation - Main View**  
Scale 1:100 A3

US Zinc Sheet Fixed To tubes with Self Drilling Scerws  
3 X 6 Rectangular Steel Tube



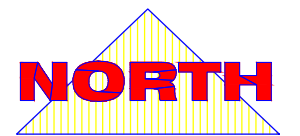
**Latrine**  
**Detailed Side Section**  
Scale 1:100 A3



**FOR LINTELS' BEAMS**  
Y Ø 12 LENGTH = 12 M. QTY = 1 BAR(12M)  
Y Ø 8 LENGTH = 12 M. QTY = 2 BAR(12M)  
**Y12 MM = 0.011 TON .**

**SLAB THICKNESS = 10 CM**  
**BOTTOM STEEL :**  
Y Ø 12 QTY = 7 BAR(12M)  
**Y12 MM = 0.075 TON .**

**PLAN**  
**Latrine Pit RC Slab Layout**  
Scale NTSA3



**UN Darfur Fund**  
Promote Reconciliation  
and Coexistence  
for Sustainable  
Peace in Darfur  
Foundational and Short Term Activities (FaST)

**MULTI-PURPOSE  
LATRINE**  
FOR TENDERING

Lead Agency:  
UNDP (with UN Women)

**LATRINE UNIT**

FEB  
2016

Design By:  
**Bahauddin Ibrahim**  
+249 (0) 9 112 13 3547 +249 (0) 1 141 97 005  
bahauddin@unicef.org

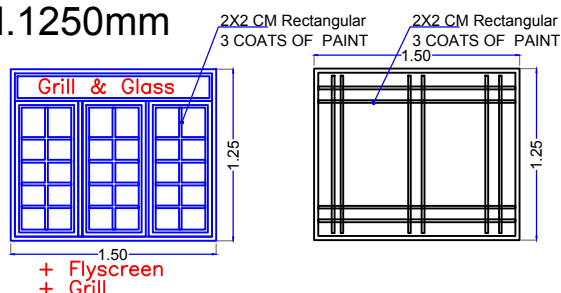
**A5**

# WINDOWS

SAMPLE TO BE APPROVED.

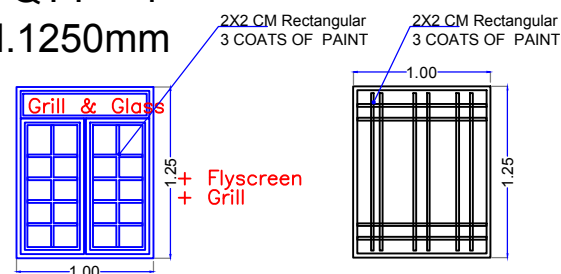
## W2 Painted Steel QTY = 5 Width1500xH.1250mm

Hinged Window  
Flyscreen Mesh  
6mm Glaze  
Frame (4X8 Tube)  
Window Leaf (3X6 Tube)  
Grill (2X2 Tube)  
3Handle & 6Latch



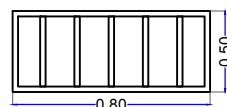
## W3 Painted Steel QTY = 4 Width1500xH.1250mm

Hinged Window  
Flyscreen Mesh  
6mm Glaze  
Frame (4X8 Tube)  
Window Leaf (3X6 Tube)  
Grill (2X2 Tube)  
2 Handle & 4 Latch



## W4 Painted Steel QTY = 2 Width800xH.500mm

Hinged Window  
Grill (2X2 Tube)

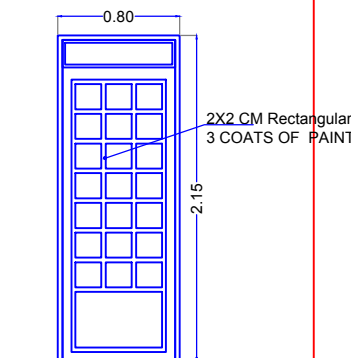


# DOORS

SAMPLE TO BE APPROVED.

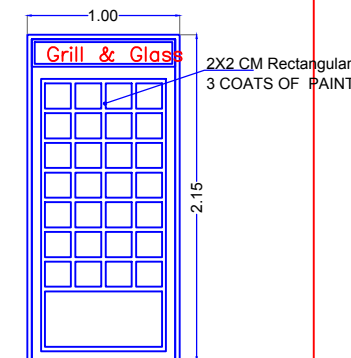
## D1 Painted Steel Width800xH.2150mm

Hinged STEEL DOOR  
NO Glaze @ Door Leaf  
Frame (4X8 Tube)  
Door Leaf (3X6 Tube)  
3 Hinges Each Leaf  
1Handle & 2 Latch



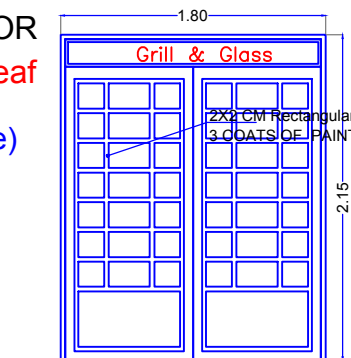
## D2 Painted Steel QTY = 6 Width1000xH.2150mm

Hinged STEEL DOOR  
NO Glaze @ Door Leaf  
Frame (4X8 Tube)  
Door Leaf (3X6 Tube)  
3 Hinges Each Leaf  
1Handle & 2 Latch



## D4 Painted Steel QTY = 1 Width1800xH.2150mm

Hinged STEEL DOOR  
NO Glaze @ Door Leaf  
Frame (4X8 Tube)  
Door Leaf (3X6 Tube)  
3 Hinges Each Leaf  
1Handle & 2 Latch



## MAIN OFFICES DOORS & WINDOWS

Scale NTS

UN Darfur Fund  
Promote Reconciliation  
and Coexistence  
for Sustainable  
Peace in Darfur  
Foundational and Short Term Activities (FaST)

STANDARD MODEL  
COMMUNITY PEACE CENTER  
FOR TENDERING

Lead Agency:  
UNDP (with UN Women)

MODEL (B) FEB 2016

Design By:  
Bahauddin Ibrahim  
+249 (0) 9 112 13 354 / +249 (0) 1 141 97 005  
bahauddin@gmail.com

A6