

UN Darfur Fund

Promote Reconciliation and Coexistence for Sustainable Peace in Darfur

NORTH DARFUR KORNOI LOCALITY

COMMUNITY CENTER - SMALL MODEL

February 2016

*Bahauddin Ibrahim*

+249 (0) 9 112 13 334 / +249 (0) 1 141 97 005  
[bahaalim@gmail.com](mailto:bahaalim@gmail.com)

محطة  
كالتون



#### FINISHING SCHEDULE

CEILING FINISHES	
1	US ZINC SHEET (0.5MM)
2	OIL PAINT
3	FABRIC TEXTILE SHEETS
WALL FINISHES	
1	CERAMIC TILES
2	MARBLE TILES
3	3 COATS OF POMASTIC ON C/S PLASTER
4	ROUGH PLASTER
SKIRTING	
1	TERAIZZO TILES
2	CERAMIC TILES
3	MARBLE TILES
4	GRANITE TILES
FLOOR FINISHES	
1	TERAIZZO TILES
2	CERAMIC TILES
3	FAIR FACE CEMENT/ SAND FINISH ON PC

CEILING FINISHES 

C	W
F	S

 WALL FINISHES

FLOOR FINISHES 

C	W
F	S

 SKIRTING

#### ELECTRICAL KEY

S	Description
WALL MOUNTED KDK FAN	
FAN REGULATOR	
SOCKET OUTLET	
13A SOCKET OUTLET	
WALL MOUNTED LAMP	
DOUBLE ONE WAY SWITCH	

**UN Darfur Fund**  
Promote Reconciliation  
and Coexistence  
for Sustainable  
Peace in Darfur  
Foundational and Short Term Activities (FaST)

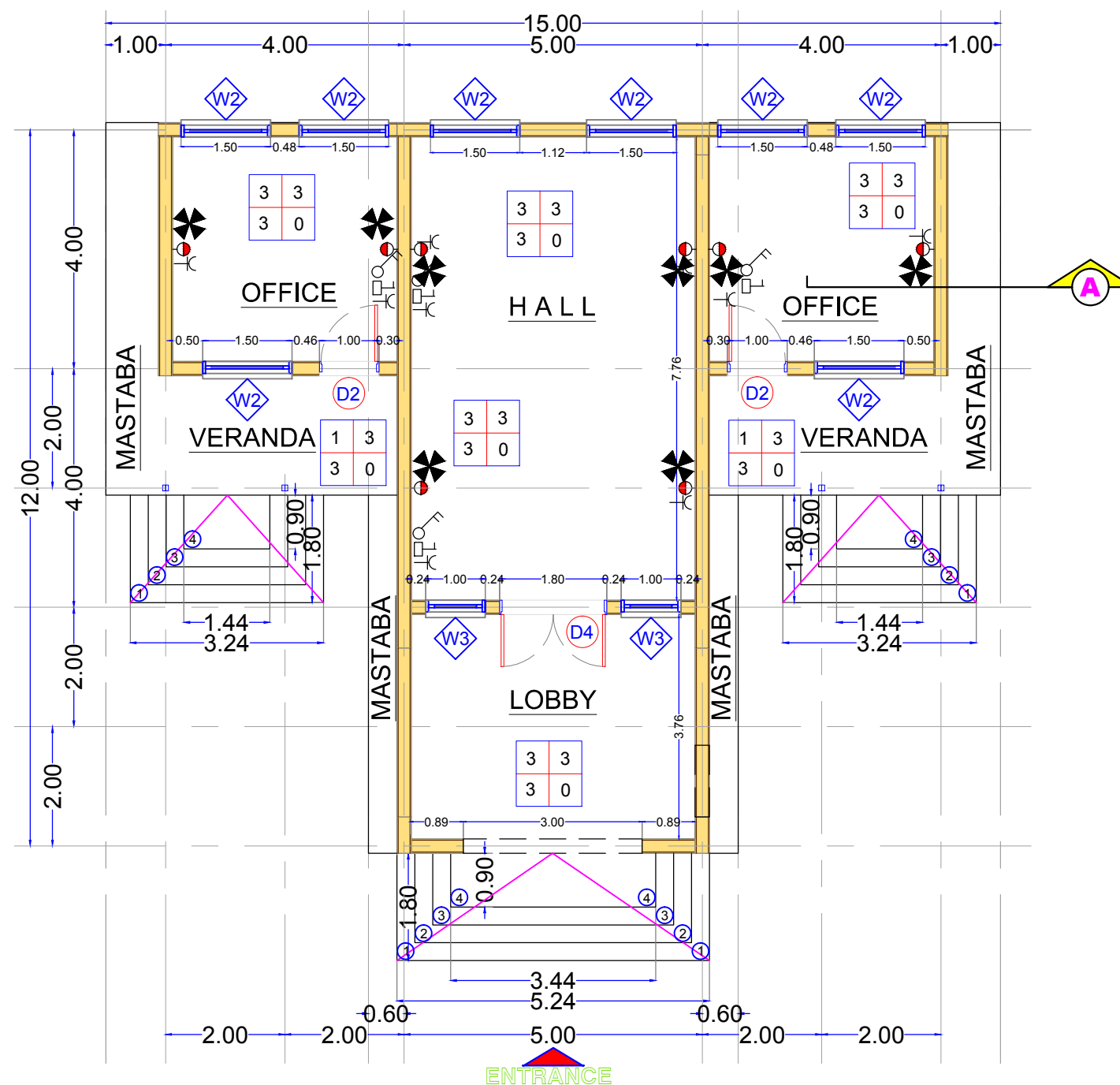
**STANDARD MODEL  
COMMUNITY PEACE CENTER**  
NOT FOR TENDERING FOR INFORMATION ONLY

Lead Agency:  
UNDP (with UN Women)

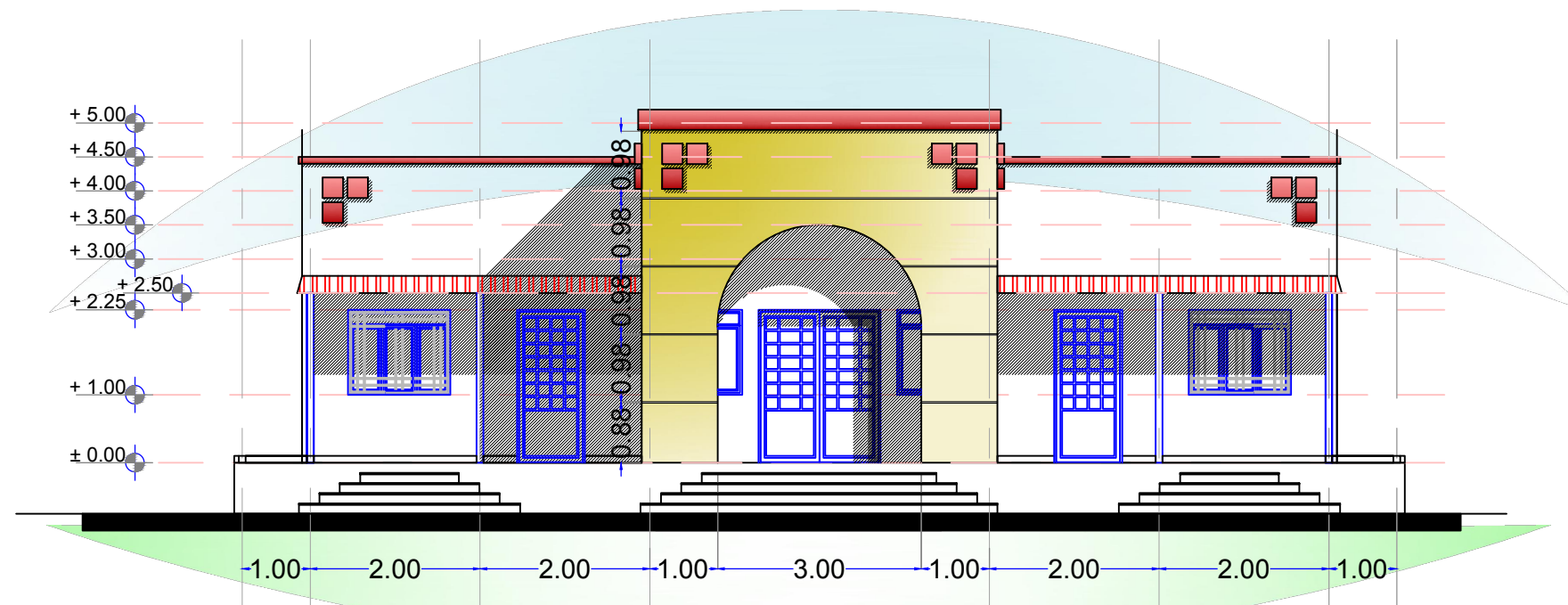
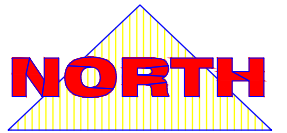
**MODEL (A)** FEB 2016

Design By:  
**Bahauddin Ibrahim**  
+249 (0) 9 112 13 3547 +249 (0) 1 141 97 005  
bahauddin@cpcc.org

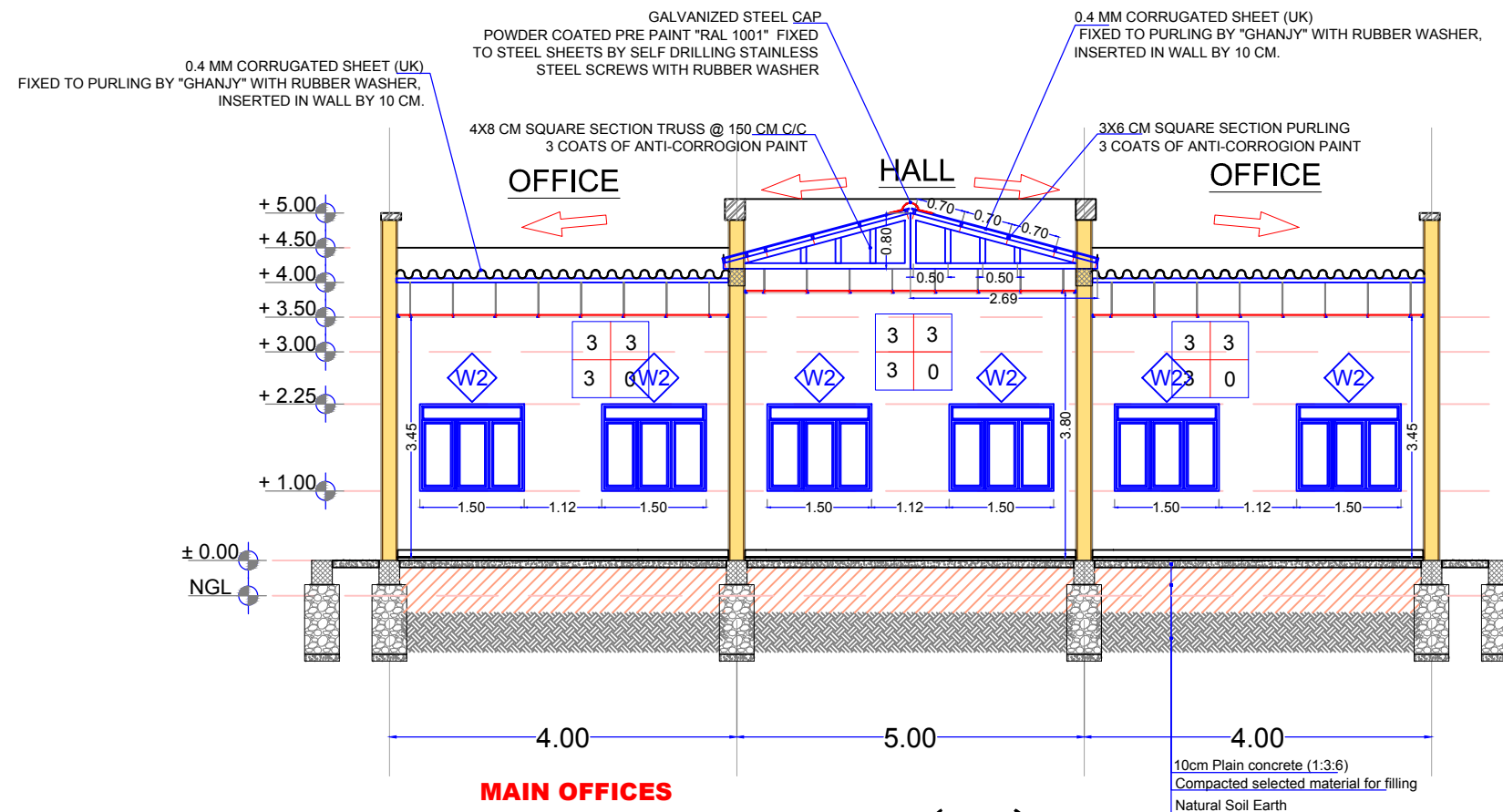
**A1**



**GROUND FLOOR PLAN LAYOUT**  
**Main Building**  
Scale 1:100 A3



ELEVATION MAIN VIEW  
Main Building



MAIN OFFICES  
DETAILED SECTION (AA)

#### FINISHING SCHEDULE

CEILING FINISHES	
1	US ZINC SHEET (0.5MM)
2	OIL PAINT
3	FABRIC TEXTILE SHEETS
WALL FINISHES	
1	CERAMIC TILES
2	MARBLE TILES
3	3 COATS OF POMASTIC ON C/S PLASTER
4	ROUGH PLASTER
SKIRTING	
1	TERAIZZO TILES
2	CERAMIC TILES
3	MARBLE TILES
4	GRANITE TILES
FLOOR FINISHES	
1	TERAIZZO TILES
2	CERAMIC TILES
3	FAIR FACE CEMENT/ SAND FINISH ON PC

CEILING FINISHES	C	W	WALL FINISHES
FLOOR FINISHES	F	S	SKIRTING



#### ELECTRICAL KEY

S	Description
	56 INCH CEILING KDK FAN
	FAN REGULATOR
	SOCKET OUTLET
	13A SOCKET OUTLET
	WALL MOUNTED LAMP
	DOUBLE ONE WAY SWITCH

**UN Darfur Fund**  
Promote Reconciliation  
and Coexistence  
for Sustainable  
Peace in Darfur  
Foundational and Short Term Activities (FaST)

**STANDARD MODEL  
COMMUNITY PEACE CENTER**  
NOT FOR TENDERING FOR INFORMATION ONLY

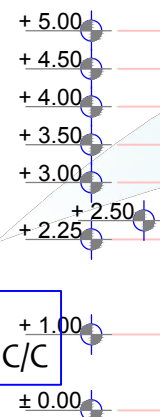
Lead Agency:  
UNDP (with UN Women)

**MODEL (A)** FEB  
2016

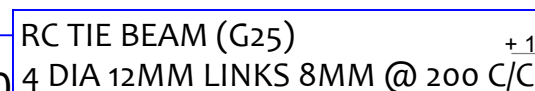
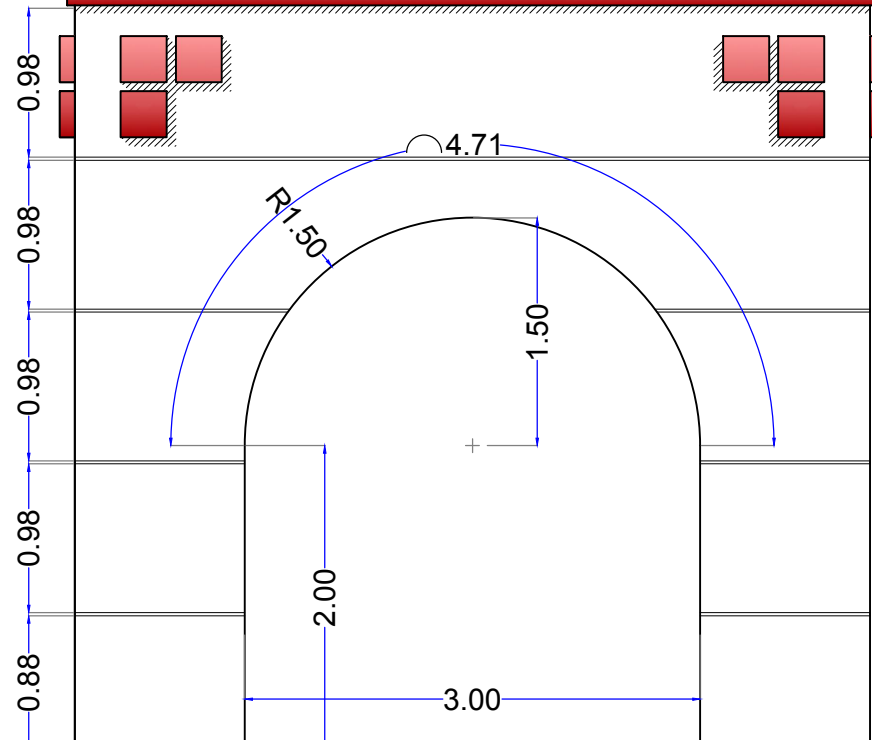
Design By:  
**Bahauddin Ibrahim**  
+249 (0) 9 112 13 354 / +249 (0) 1 141 97 005  
bahauddin@gmail.com

**A2**

# NORTH



## Main Building



1.5 BRICK WALL THICKNESS  
WITH "TARTOURA" MORTAR  
PLASTERED 2cm BOTH FACE C/S 1:8

RC GRADE BEAM (G25)  
6 DIA 12MM LINKS 8MM @ 200C/C

GRANITE HARD ROCK FOUNDATION  
USING C/S MORTAR 1:8

## Typical Sections

## Sectional Details

Scale NTS A3

**UN Darfur Fund**  
Promote Reconciliation  
and Coexistence  
for Sustainable  
Peace in Darfur  
Foundational and Short Term Activities (FaST)

STANDARD MODEL  
COMMUNITY PEACE CENTER  
FOR TENDERING

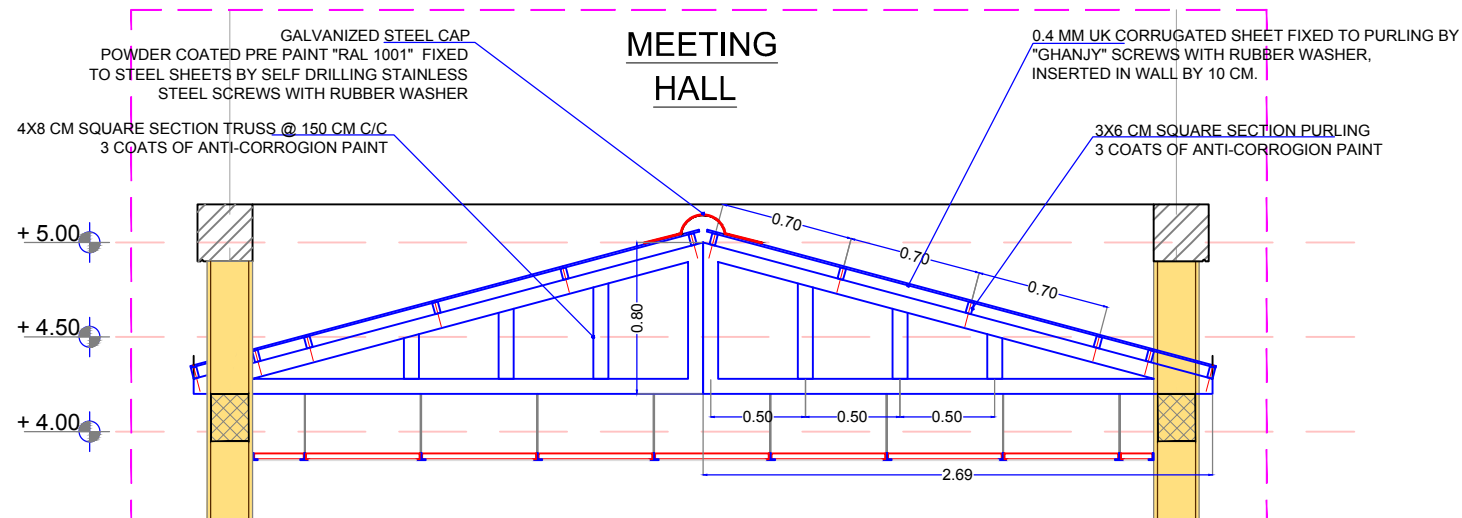
Lead Agency:  
UNDP (with UN Women)

MODEL (A)

FEB  
2016

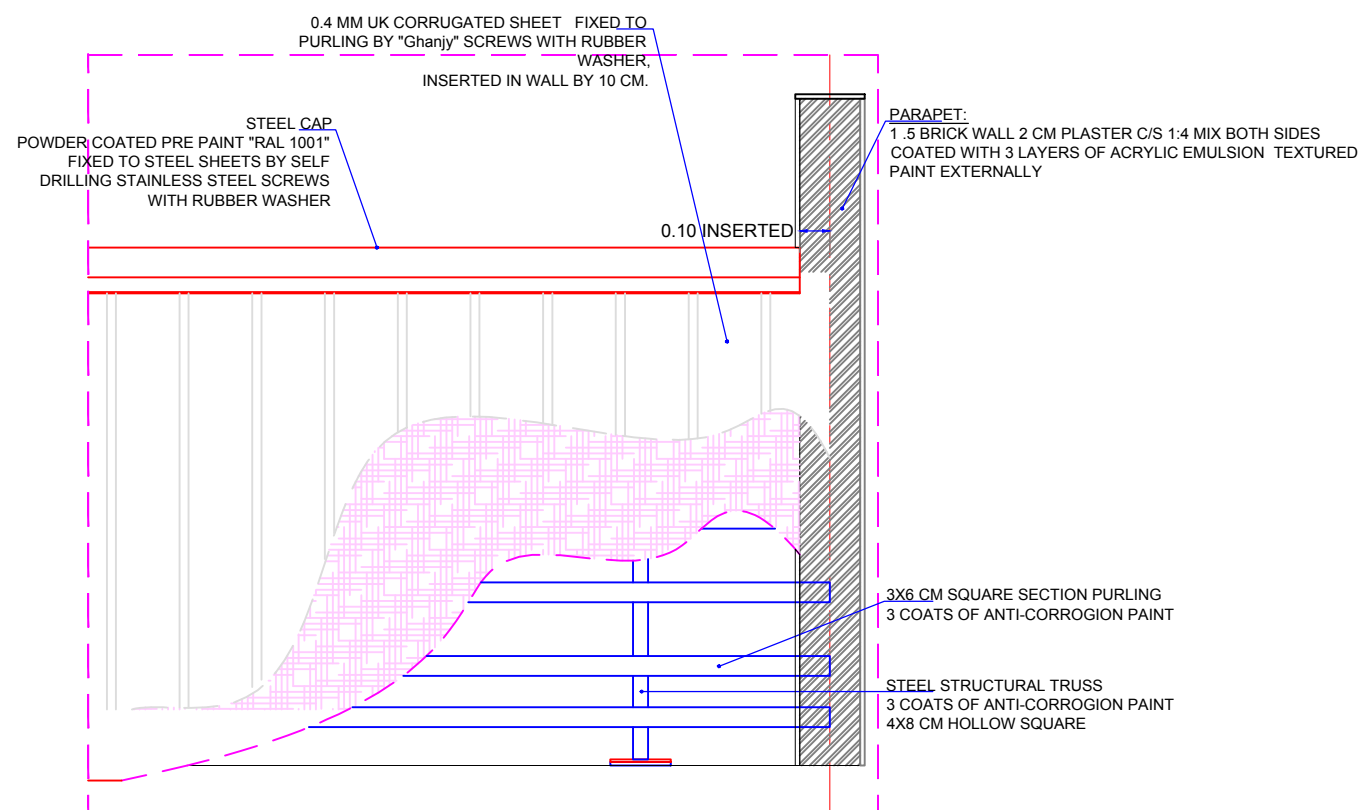
Design By:  
Bahauddin Ibrahim  
+249 (0) 9 112 13 334 / +249 (0) 1 141 97 005  
bahaalim@gmail.com

A3



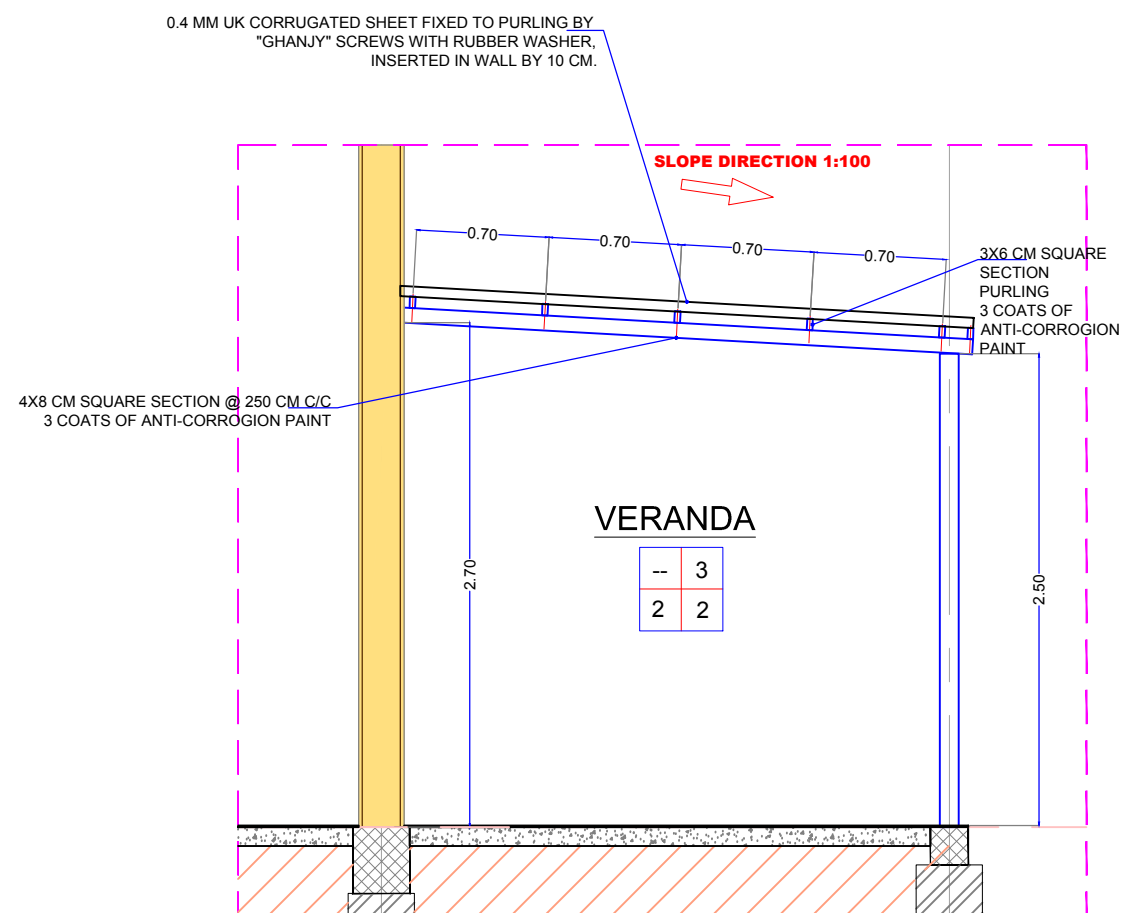
## STEEL TRUSS SECTION

Scale NTS



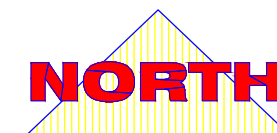
## STEEL TRUSS DETAILS

Scale NTS



## VERANDA SECTION

Scale NTS



**UN Darfur Fund**  
Promote Reconciliation  
and Coexistence  
for Sustainable  
Peace in Darfur  
Foundational and Short Term Activities (FaST)

**STANDARD MODEL  
COMMUNITY PEACE CENTER**  
FOR TENDERING

Lead Agency:  
UNDP (with UN Women)

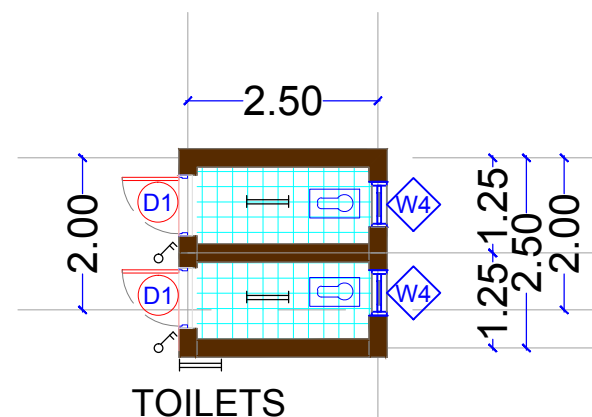
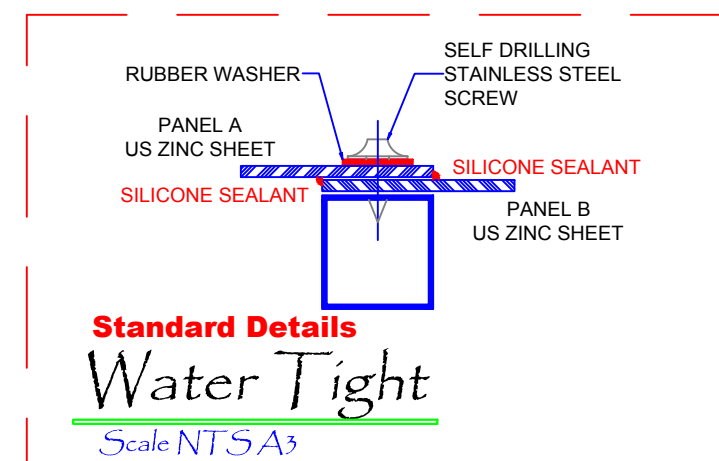
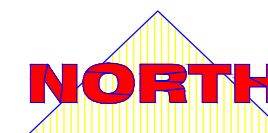
**MODEL (A)**

FEB  
2016

Design By:  
**Bahaudin Ibrahim**  
+249 (0) 9 112 13 3347 +249 (0) 1 141 97 005  
bahaudin@gmail.com

**A4**

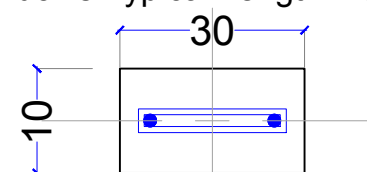




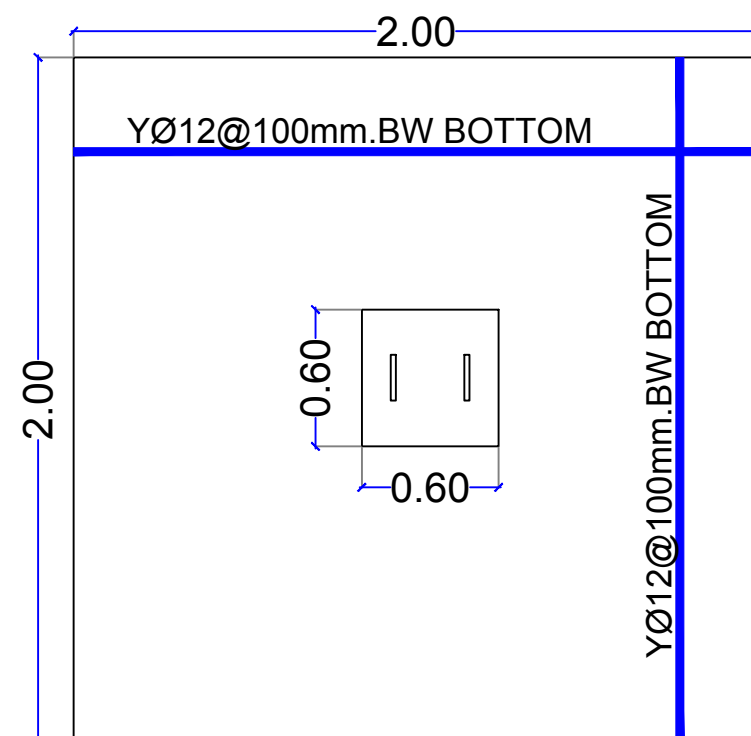
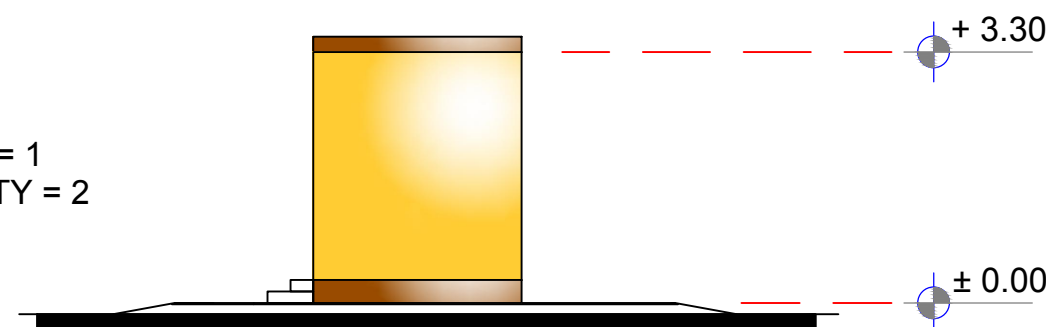
#### QUANTITIES : (FOR LATRINE ROOF)

6 m length 3 X 6 Rectangular Steel Tube	3
6 m length 4 X 8 Rectangular Steel Tube	0
6 m. length 3 inch dia. steel pipe	0
US Zinc Sheet 6 m. Length	9 Sq.M.
Self Drilling Stainless Steel Screws	500

Above Doors Typical Length = 2.50 m. QTY = 1  
Above Windows Typical Length = 0.80 m. QTY = 2



**FOR LATRINE**  
**RC. Lintel Beam**  
Scale NTSA3

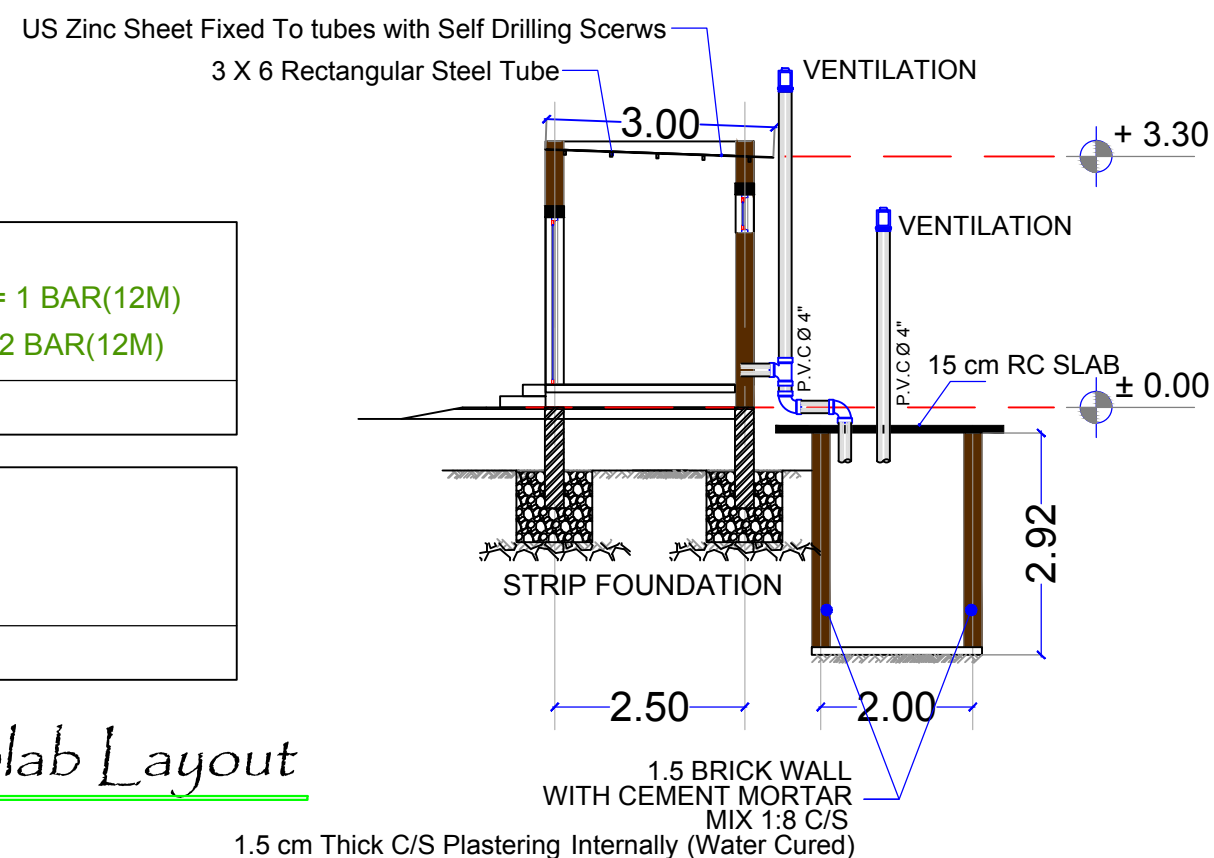


#### FOR LINTELS' BEAMS

Y Ø 12 LENGTH = 12 M. QTY = 1 BAR(12M)  
Y Ø 8 LENGTH = 12 M. QTY = 2 BAR(12M)  
**Y12 MM = 0.011 TON .**

SLAB THICKNESS = 10 CM  
BOTTOM STEEL :  
Y Ø 12 QTY = 7 BAR(12M)  
**Y12 MM = 0.075 TON .**

**PLAN**  
**Latrine Pit RC Slab Layout**  
Scale NTSA3



**Latrine**  
**Detailed Side Section**  
Scale 1:100 A3

**UN Darfur Fund**  
Promote Reconciliation  
and Coexistence  
for Sustainable  
Peace in Darfur  
Foundational and Short Term Activities (FaST)

**MULTI-PURPOSE  
LATRINE**  
FOR TENDERING

Lead Agency:  
UNDP (with UN Women)

**LATRINE UNIT**

FEB  
2016

Design By:  
**Bahauddin Ibrahim**  
+249 (0) 9 112 13 3547 +249 (0) 1 141 97 005  
bahauddin@unicef.org

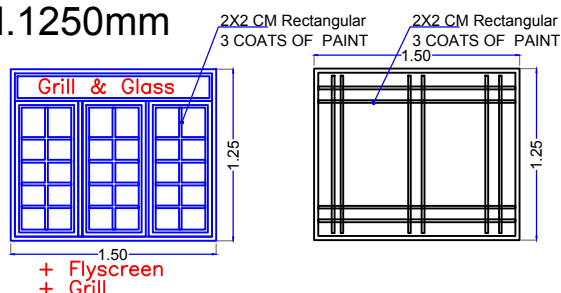
**A5**

# WINDOWS

SAMPLE TO BE APPROVED.

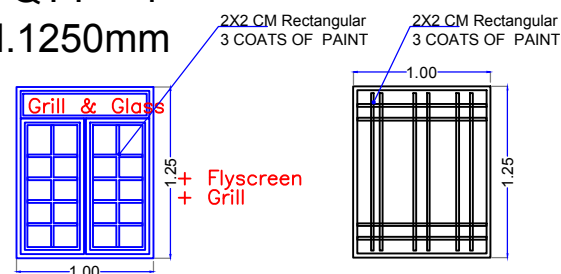
## W2 Painted Steel QTY = 5 Width1500xH.1250mm

Hinged Window  
Flyscreen Mesh  
6mm Glaze  
Frame (4X8 Tube)  
Window Leaf (3X6 Tube)  
Grill (2X2 Tube)  
3Handle & 6Latch



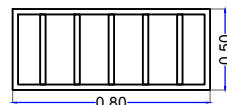
## W3 Painted Steel QTY = 4 Width1500xH.1250mm

Hinged Window  
Flyscreen Mesh  
6mm Glaze  
Frame (4X8 Tube)  
Window Leaf (3X6 Tube)  
Grill (2X2 Tube)  
2 Handle & 4 Latch



## W4 Painted Steel QTY = 2 Width800xH.500mm

Hinged Window  
Grill (2X2 Tube)

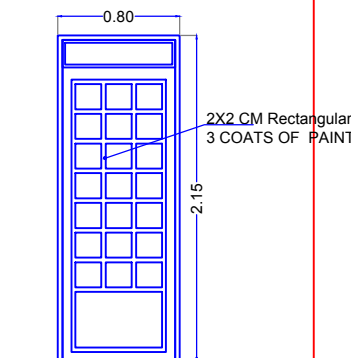


# DOORS

SAMPLE TO BE APPROVED.

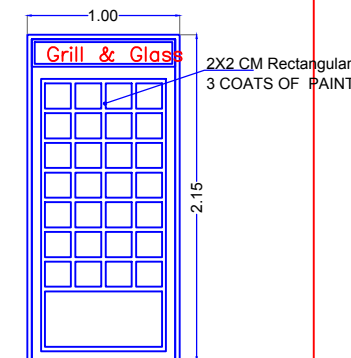
## D1 Painted Steel Width800xH.2150mm

Hinged STEEL DOOR  
NO Glaze @ Door Leaf  
Frame (4X8 Tube)  
Door Leaf (3X6 Tube)  
3 Hinges Each Leaf  
1Handle & 2 Latch



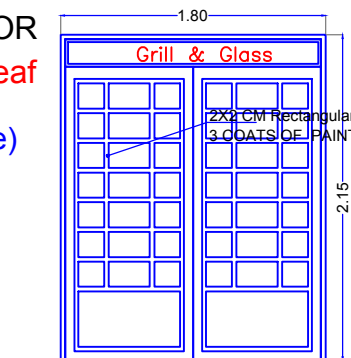
## D2 Painted Steel QTY = 6 Width1000xH.2150mm

Hinged STEEL DOOR  
NO Glaze @ Door Leaf  
Frame (4X8 Tube)  
Door Leaf (3X6 Tube)  
3 Hinges Each Leaf  
1Handle & 2 Latch



## D4 Painted Steel QTY = 1 Width1800xH.2150mm

Hinged STEEL DOOR  
NO Glaze @ Door Leaf  
Frame (4X8 Tube)  
Door Leaf (3X6 Tube)  
3 Hinges Each Leaf  
1Handle & 2 Latch



## MAIN OFFICES DOORS & WINDOWS

Scale NTS

UN Darfur Fund  
Promote Reconciliation  
and Coexistence  
for Sustainable  
Peace in Darfur  
Foundational and Short Term Activities (FaST)

STANDARD MODEL  
COMMUNITY PEACE CENTER  
FOR TENDERING

Lead Agency:  
UNDP (with UN Women)

MODEL (A) FEB 2016

Design By:  
Bahaiddin Ibrahim  
+249 (0) 9 112 13 334 / +249 (0) 1 141 97 005  
bahaiddin@gmail.com

A6