



**KINGDOM OF SAUDIA ARABIA  
THE SAUDI FUND FOR DEVELOPMENT ( SFD)**

---

PROJECT NAME

Reconstruction and repair works of more than 150 effected houses for non-refugees and Rehabilitation and Furniture for field playgrounds and a culture center

Lot#11-c

Covering for the spectatpr in Palestine and Beit-hanoun playgrounds

DONATED BY

Kingdom of Saudi Arabia through the Saudi Fund for Development (SFD)

EMPLOYER

United Nations Releif and Works Agency ( UNRWA)  
Through United Nations Development Programme ( UNDP/PAPP)



Drawings

Beithanoun

Play Ground

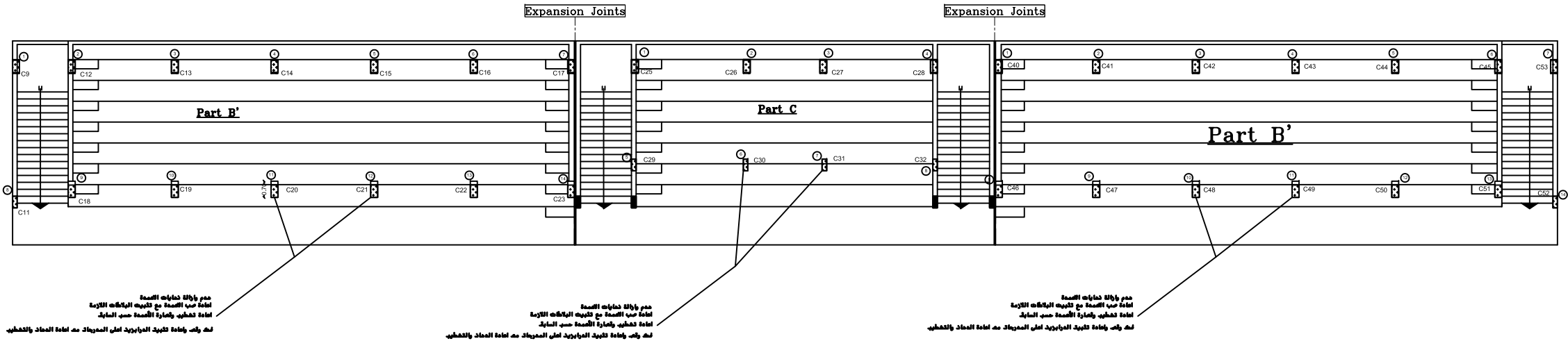


FUNDED BY :  
THE KINGDOM OF SAUDI ARABIA  
THROUGH THE SAUDI FUND FOR  
DEVELOPMENT (SFD)



LEGEND:

FOR TENDER ONLY



المسقط الافقي للمدرج

| SYM.          | NAME      |
|---------------|-----------|
| GRAPHIC SCALE |           |
| 0 1 2 3 4     |           |
|               |           |
|               |           |
|               |           |
| NO            | DATE      |
| ENG           | REVISIONS |

CLIENT:

EMPLOYER:

UNITED NATIONS RELIEF AND WORKS AGENCY  
(UNRWA) THROUGH UNITED NATIONS  
DEVELOPMENT PROGRAMME (UNDP/PAPP)

CONSULTANT:

PROJECT TITLE:

Reconstruction and repair works of more  
than 150 effected houses for non-refugees  
and Rehabilitation and Furniture for five field  
playgrounds and a culture center.

Lot#11: Construction Shed For Spectators in  
5 play ground.

Location : Beit Hanoun play ground.

|             |             |             |
|-------------|-------------|-------------|
| PREPARED BY | SCALE       | DRAWING NO. |
| CHECKED BY  | APPROVED BY | C-01        |
| DRAWN BY    | DATE        | SERIAL NO.  |



FUNDED BY :  
THE KINGDOM OF SAUDI ARABIA  
THROUGH THE SAUDI FUND FOR  
DEVELOPMENT (SFD)



LEGEND:

FOR TENDER ONLY



| SYM.                    | NAME      |
|-------------------------|-----------|
| GRAPHIC SCALE 0 1 2 3 4 |           |
|                         |           |
|                         |           |
|                         |           |
| NO                      | DATE      |
| ENG                     | REVISIONS |

CLIENT:

EMPLOYER:

UNITED NATIONS RELIEF AND WORKS AGENCY  
(UNRWA) THROUGH UNITED NATIONS  
DEVELOPMENT PROGRAMME (UNDP/PAPP)

CONSULTANT:

PROJECT TITLE:

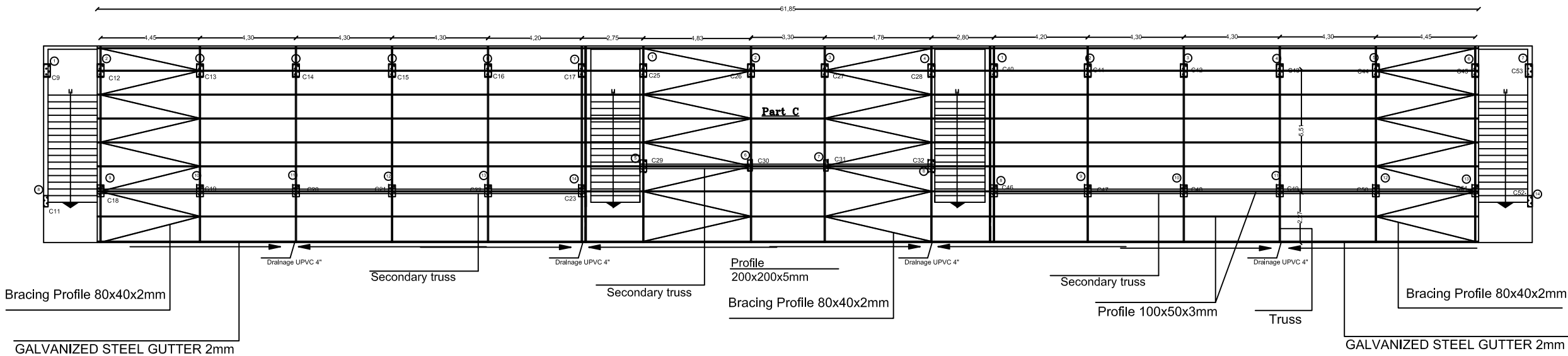
Reconstruction and repair works of more  
than 150 effected houses for non-refugees  
and Rehabilitation and Furniture for five field  
playgrounds and a culture center.

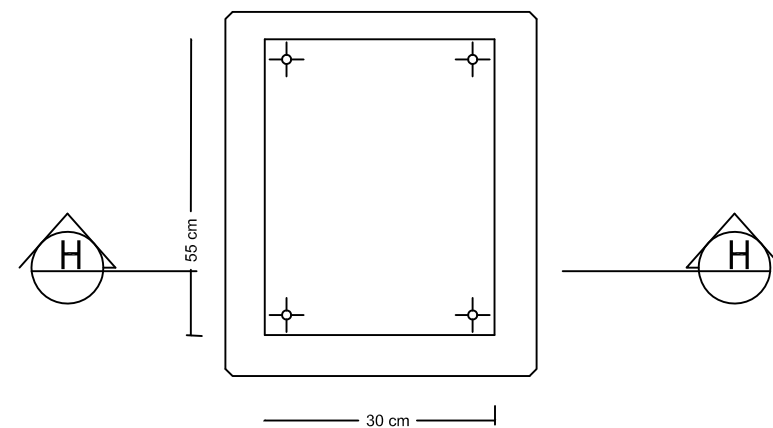
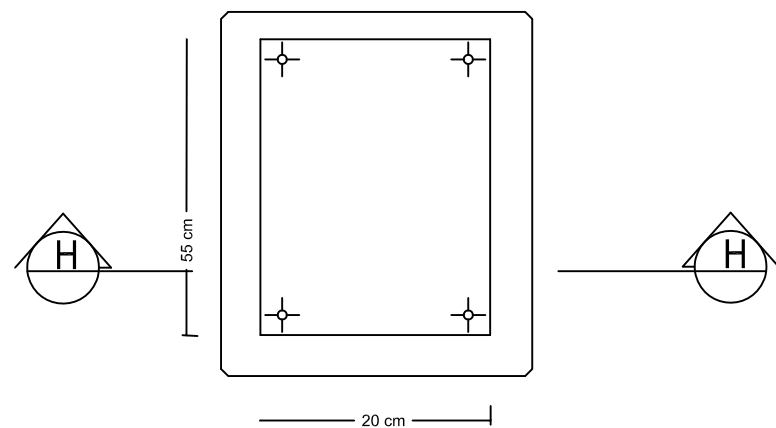
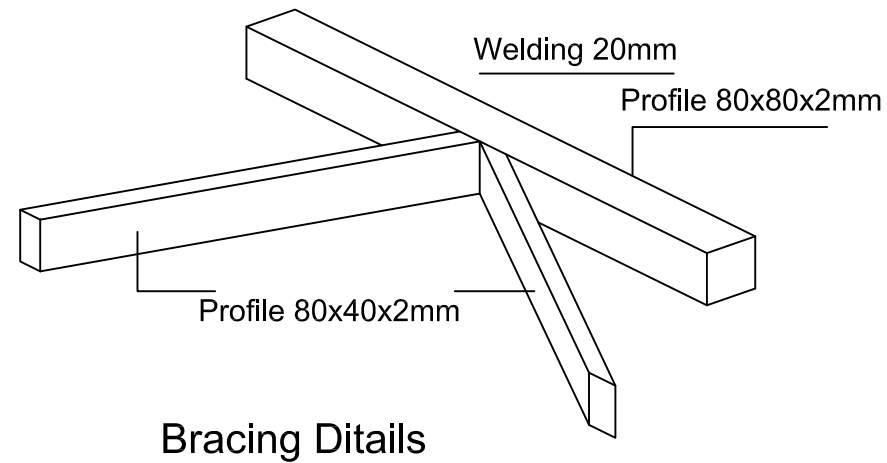
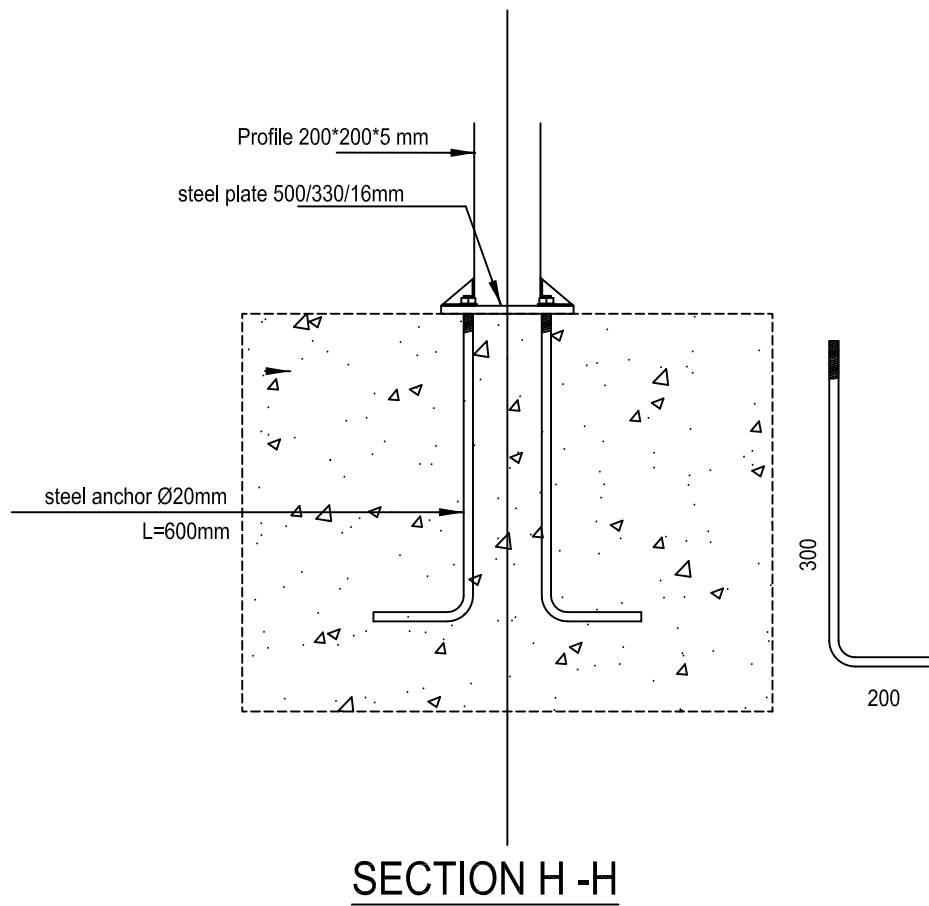
Lot#11: Construction Shed For Spectators in  
5 play ground.

Location :

Beit Hanoun play ground.

|             |             |             |
|-------------|-------------|-------------|
| PREPARED BY | SCALE       | DRAWING NO. |
| CHECKED BY  | APPROVED BY | C-02        |
| DRAWN BY    | DATE        | SERIAL NO.  |





Columns DETAILS 2

Columns DETAILS 1

## Columns DETAILS



FUNDED BY :

THE KINGDOM OF SAUDI ARABIA  
THROUGH THE SAUDI FUND FOR  
DEVELOPMENT (SFD)



LEGEND:

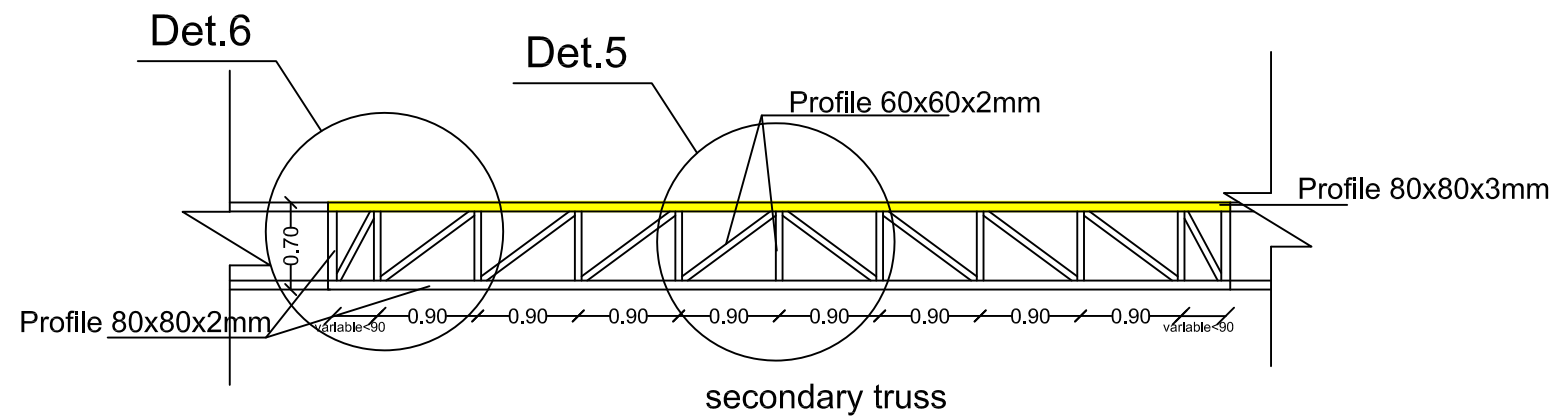
FOR TENDER ONLY



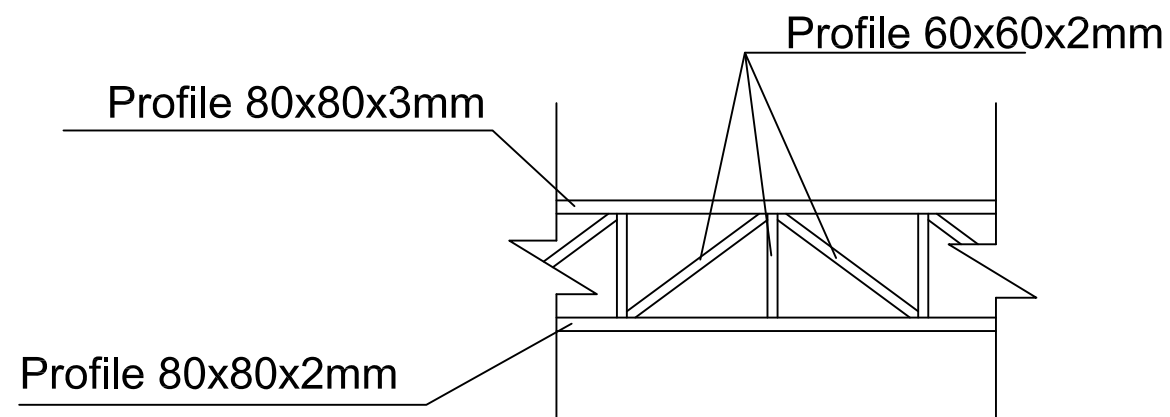
| SYM.   | NAME        |
|--|-------------|
|  |             |
| GRAPHIC SCALE 0 1 2 3 4  |             |
|  |             |
|  |             |
| NO   | DATE        |
| ENG  | REVISIONS   |
| CLIENT:  |             |
| EMPLOYER:  |             |
| UNITED NATIONS RELIEF AND WORKS AGENCY<br>(UNRWA) THROUGH UNITED NATIONS<br>DEVELOPMENT PROGRAMME (UNDP/PAPP)  |             |
| CONSULTANT:  |             |
| PROJECT TITLE:   |             |
| Reconstruction and repair works of more<br>than 150 effected houses for non-refugees<br>and Rehabilitation and Furniture for five field<br>playgrounds and a culture center. |             |
| Lot#11: Construction Shed For Spectators in<br>5 play ground.  |             |
| Location :   |             |
| Beit Hanoun play ground.   |             |
| PREPARED BY  | SCALE       |
| CHECKED BY   | APPROVED BY |
| DRAWN BY   | DATE        |
| DRAWING NO.<br>C-03  |             |
| SERIAL NO.   |             |



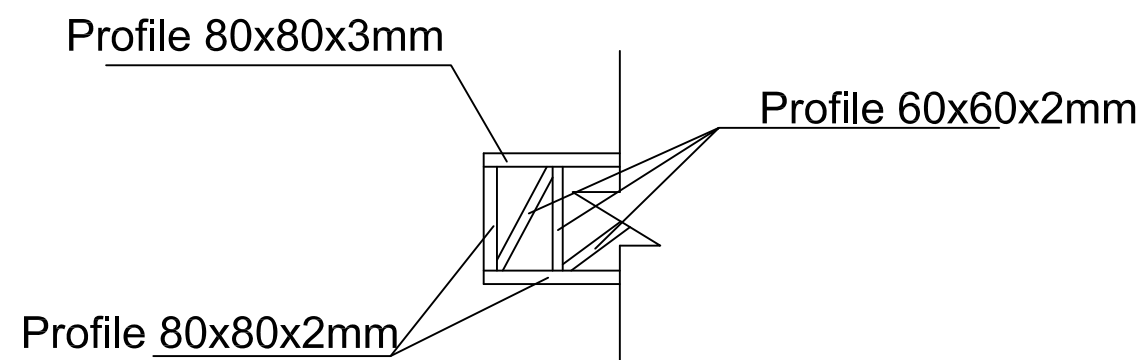




SECTION  
B—B



Det.5



Det.6

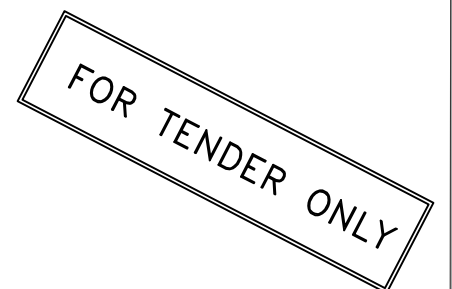


FUNDED BY :

THE KINGDOM OF SAUDI ARABIA  
THROUGH THE SAUDI FUND FOR  
DEVELOPMENT (SFD)

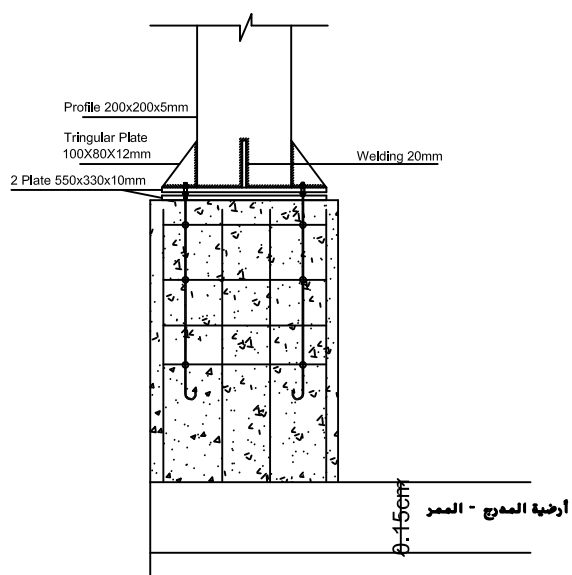
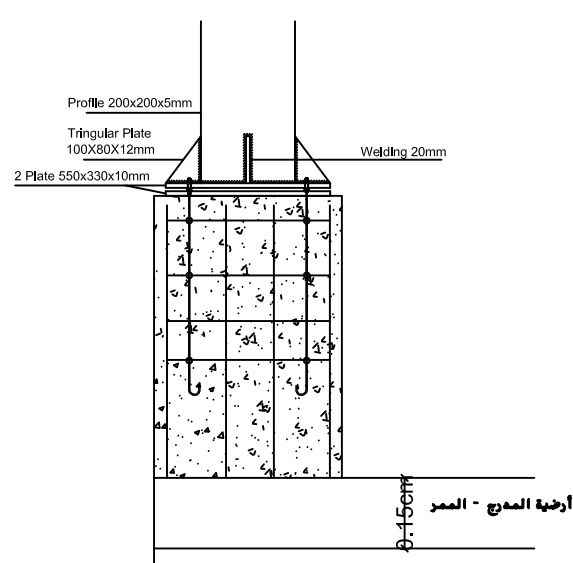
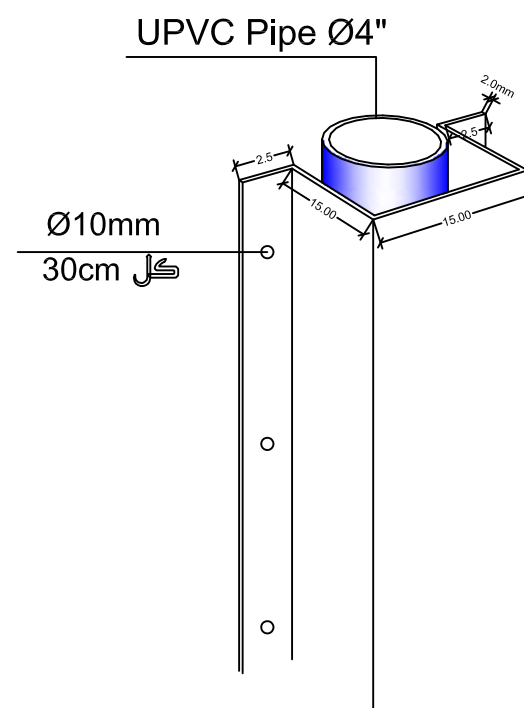
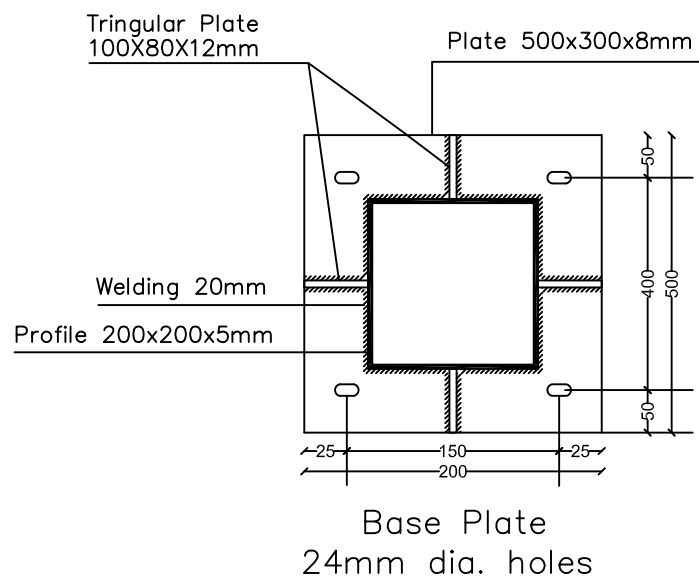
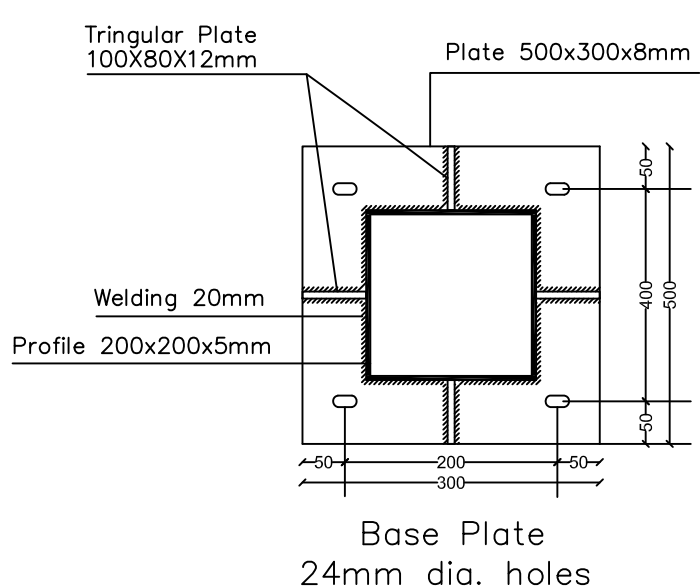


LEGEND:



| SYM.   | NAME        |
|--|-------------|
|  |             |
| GRAPHIC SCALE 0 1 2 3 4  |             |
| CLIENT:  |             |
|  |             |
|  |             |
| NO   | DATE        |
| ENG  | REVISIONS   |
| EMPLOYER:  |             |
| CONSULTANT:  |             |
| UNITED NATIONS RELIEF AND WORKS AGENCY<br>(UNRWA) THROUGH UNITED NATIONS<br>DEVELOPMENT PROGRAMME (UNDP/PAPP)  |             |
| PROJECT TITLE:   |             |
| Reconstruction and repair works of more<br>than 150 effected houses for non-refugees<br>and Rehabilitation and Furniture for five field<br>playgrounds and a culture center. |             |
| Lot#11: Construction Shed For Spectators in<br>5 play ground.  |             |
| Location : Beit Hanoun play ground.  |             |
| PREPARED BY  | SCALE       |
| CHECKED BY   | APPROVED BY |
| DRAWN BY   | DATE        |
| DRAWING NO.<br>C-10  |             |
| SERIAL NO.   |             |





Det.1

تفصيلة حماية ماسورة المزراب

ملاحظة هدم وإزالة نهايات الاعمدة القائمة



FUNDED BY :  
THE KINGDOM OF SAUDI ARABIA  
THROUGH THE SAUDI FUND FOR  
DEVELOPMENT (SFD)



LEGEND:

FOR TENDER ONLY



| SYM.                    | NAME      |
|-------------------------|-----------|
| GRAPHIC SCALE 0 1 2 3 4 |           |
|                         |           |
|                         |           |
| NO                      | DATE      |
| ENG                     | REVISIONS |

CLIENT:

EMPLOYER:  
UNITED NATIONS RELIEF AND WORKS AGENCY  
(UNRWA) THROUGH UNITED NATIONS  
DEVELOPMENT PROGRAMME (UNDP/PAPP)

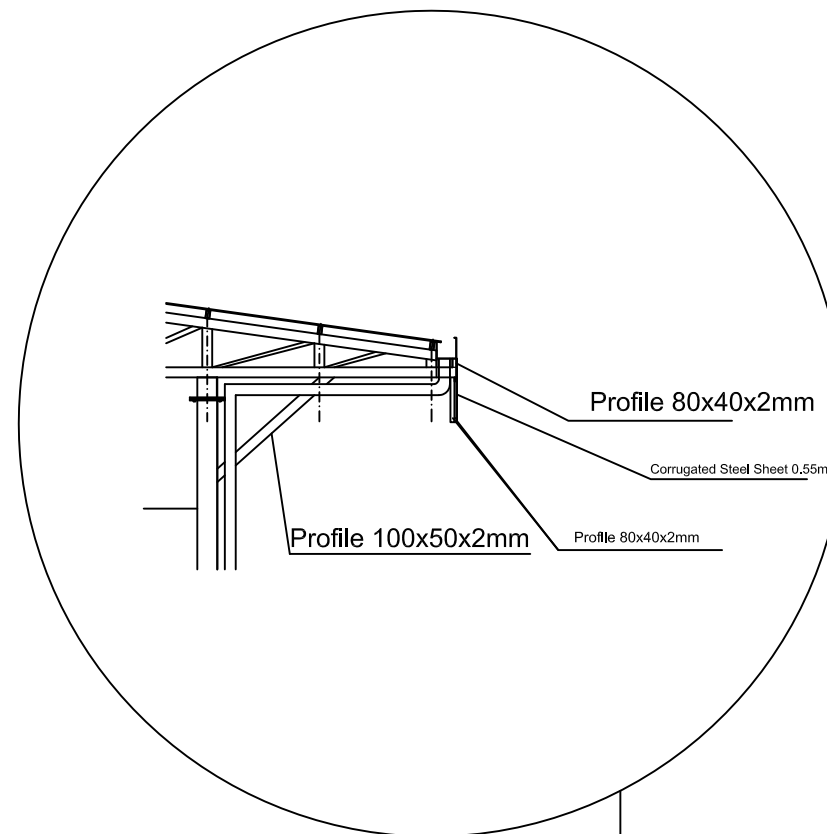
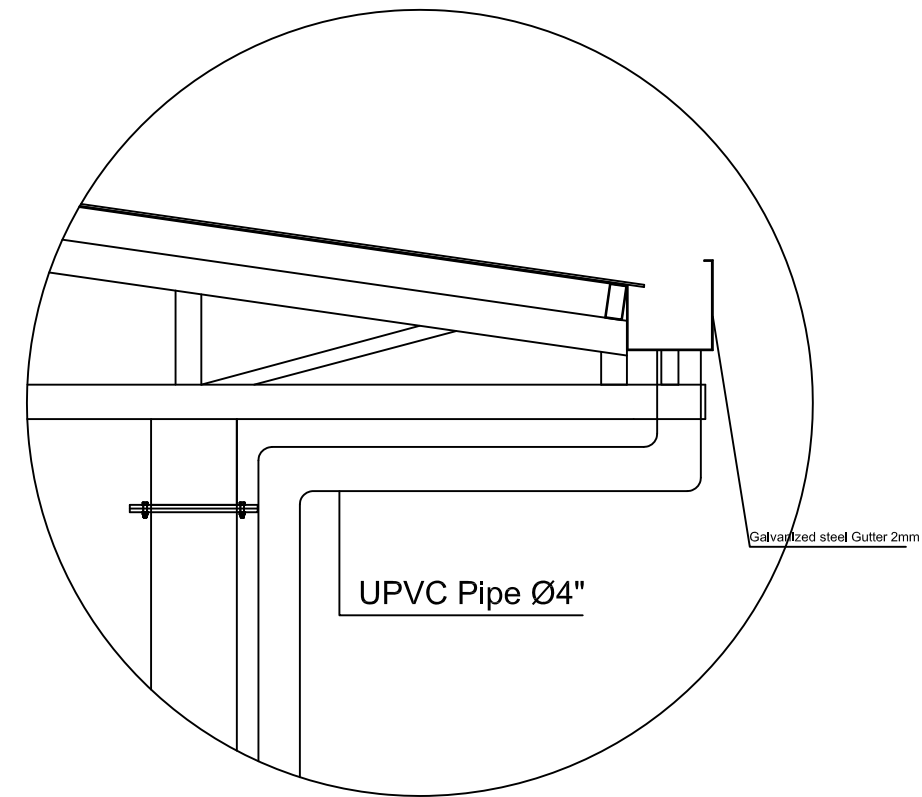
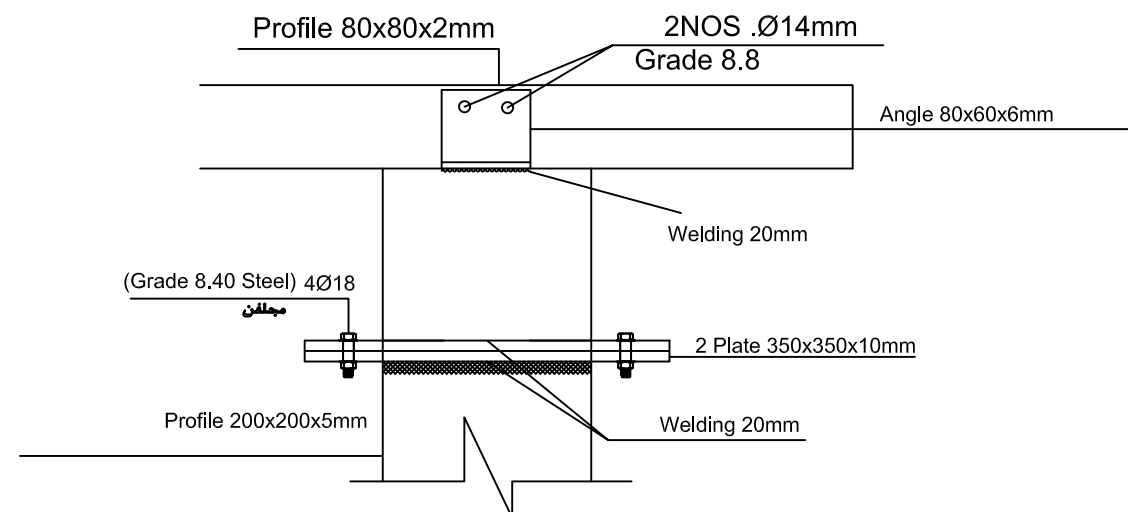
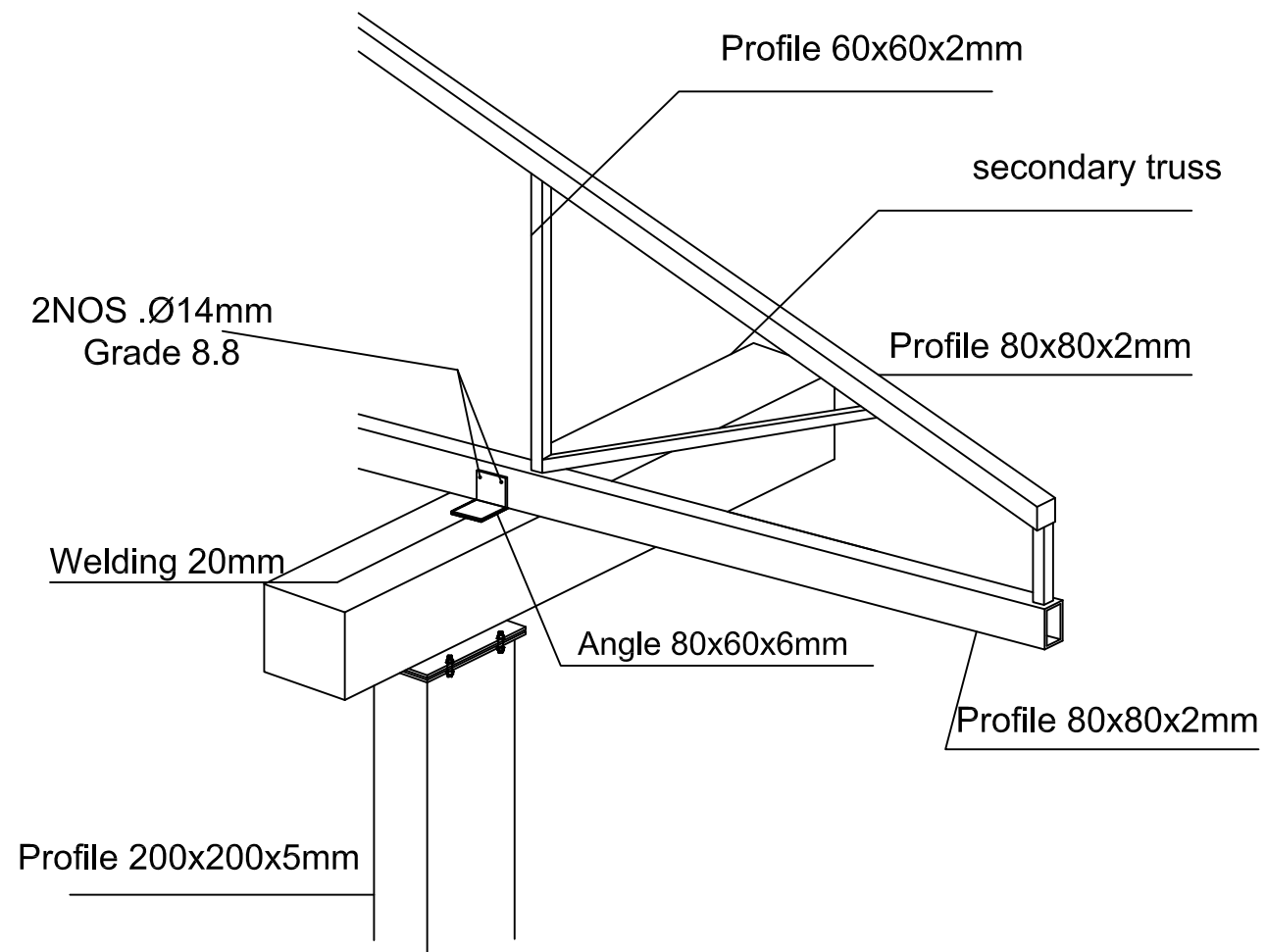
CONSULTANT:

PROJECT TITLE:  
Reconstruction and repair works of more  
than 150 effected houses for non-refugees  
and Rehabilitation and Furniture for five field  
playgrounds and a culture center.

Lot#11: Construction Shed For Spectators in  
5 play ground.

Location :  
Beit Hanoun play ground.

|             |             |             |
|-------------|-------------|-------------|
| PREPARED BY | SCALE       | DRAWING NO. |
| CHECKED BY  | APPROVED BY | C-07        |
| DRAWN BY    | DATE        | SERIAL NO.  |



FUNDED BY :


**THE KINGDOM OF SAUDI ARABIA  
THROUGH THE SAUDI FUND FOR  
DEVELOPMENT (SFD)**



*LEGEND:*

FOR TENDER ONLY



|  |      |             |           |
|--|------|-------------|-----------|
| <b>SYM.</b>  |      | <b>NAME</b> |           |
|  |      |             |           |
| <i>GRAPHIC SCALE</i>  |      |             |           |
|  |      |             |           |
|  |      |             |           |
|  |      |             |           |
| NO   | DATE | ENG         | REVISIONS |

**CLIENT:**

**EMPLOYER:**

UNITED NATIONS RELIEF AND WORKS AGENCY  
(UNRWA) THROUGH UNITED NATIONS  
DEVELOPMENT PROGRAMME (UNDP/PAPP)

**CONSULTANT:**

**PROJECT TITLE:**

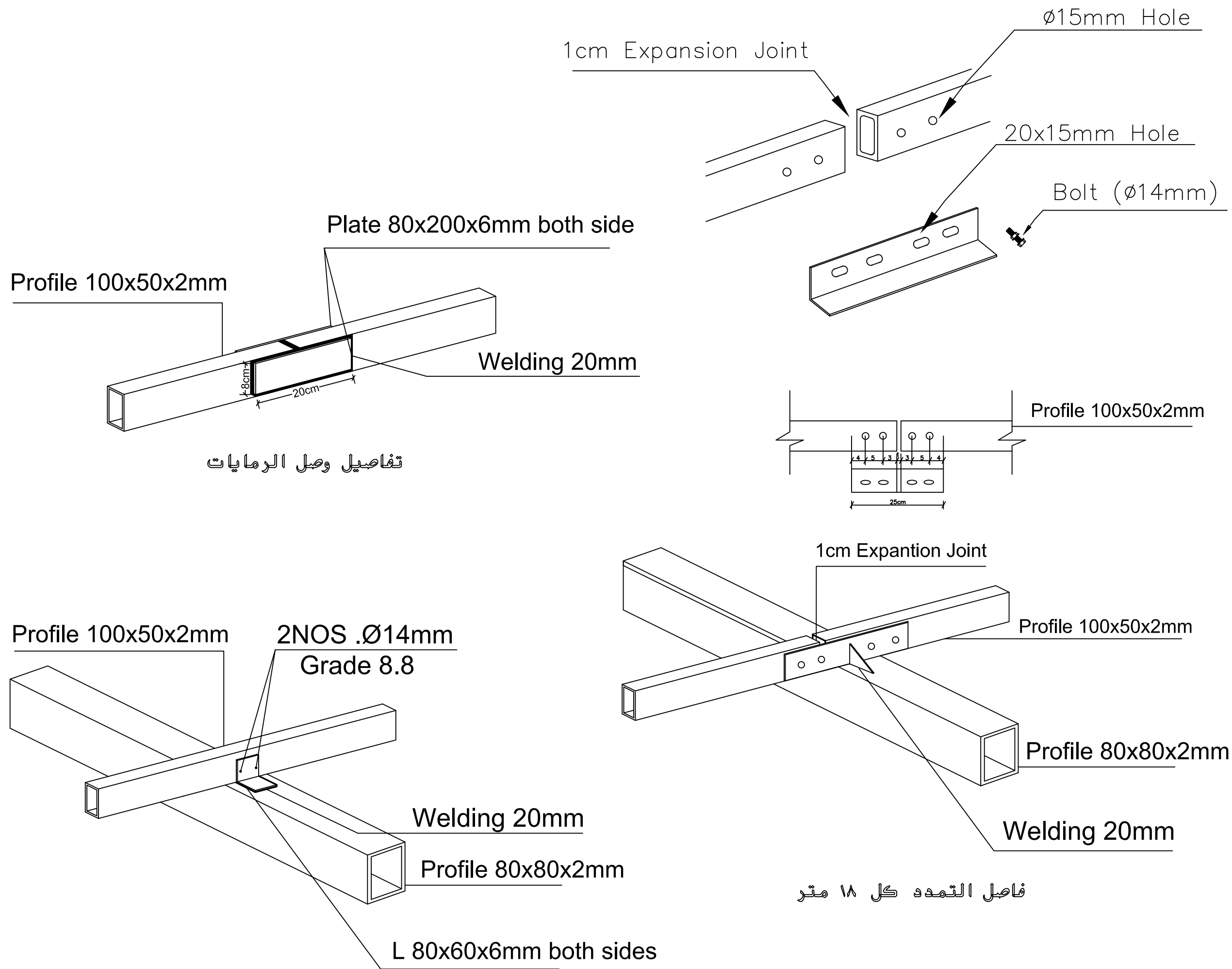
Reconstruction and repair works of more than 150 effected houses for non-refugees and Rehabilitation and Furniture for five field playgrounds and a culture center.

Lot#11: Construction Shed For Spectators in  
5 play ground.

Location:

Beit Hanoun play ground.

|             |             |                     |
|-------------|-------------|---------------------|
| PREPARED BY | SCALE       | DRAWING NO.<br>C-08 |
| CHECKED BY  | APPROVED BY |                     |
| DRAWN BY    | DATE        | SERIAL NO.          |



FUNDED BY :  
THE KINGDOM OF SAUDI ARABIA  
THROUGH THE SAUDI FUND FOR  
DEVELOPMENT (SFD)



LEGEND:

FOR TENDER ONLY



| SYM.          | NAME      |
|---------------|-----------|
|               |           |
| GRAPHIC SCALE |           |
| 0 1 2 3 4     |           |
|               |           |
|               |           |
| NO            | DATE      |
| ENG           | REVISIONS |

CLIENT:

EMPLOYER:

UNITED NATIONS RELIEF AND WORKS AGENCY  
(UNRWA) THROUGH UNITED NATIONS  
DEVELOPMENT PROGRAMME (UNDP/PAPP)

CONSULTANT:

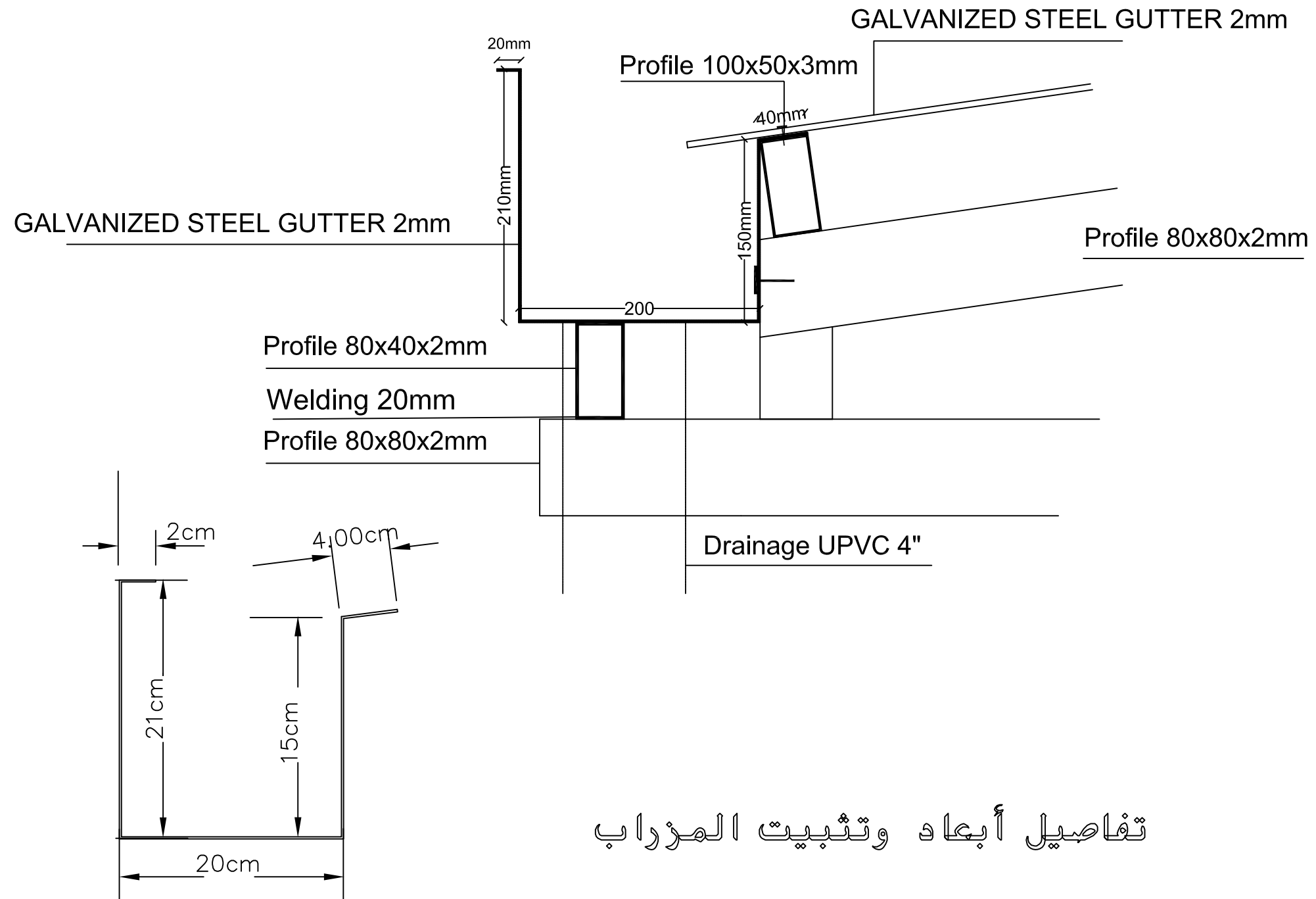
PROJECT TITLE:

Reconstruction and repair works of more  
than 150 effected houses for non-refugees  
and Rehabilitation and Furniture for five field  
playgrounds and a culture center.

Lot#11: Construction Shed For Spectators in  
5 play ground.

Location:  
Beit Hanoun play ground.

|             |             |             |
|-------------|-------------|-------------|
| PREPARED BY | SCALE       | DRAWING NO. |
| CHECKED BY  | APPROVED BY | C-09        |
| DRAWN BY    | DATE        | SERIAL NO.  |



Gutter (2 mm thick)L=62cm  
Gutter Details

تفاصيل أبعاد وتثبيت المزراب



FUNDED BY :

THE KINGDOM OF SAUDI ARABIA  
THROUGH THE SAUDI FUND FOR  
DEVELOPMENT (SFD)



LEGEND:

FOR TENDER ONLY



| SYM.                    | NAME      |
|-------------------------|-----------|
|                         |           |
| GRAPHIC SCALE 0 1 2 3 4 |           |
|                         |           |
|                         |           |
|                         |           |
| NO                      | DATE      |
| ENG                     | REVISIONS |

CLIENT:

EMPLOYER:

UNITED NATIONS RELIEF AND WORKS AGENCY  
(UNRWA) THROUGH UNITED NATIONS  
DEVELOPMENT PROGRAMME (UNDP/PAPP)

CONSULTANT:

PROJECT TITLE:

Reconstruction and repair works of more  
than 150 effected houses for non-refugees  
and Rehabilitation and Furniture for five field  
playgrounds and a culture center.

Lot#11: Construction Shed For Spectators in  
5 play ground.

Location:  
Beit Hanoun play ground.

|             |             |             |
|-------------|-------------|-------------|
| PREPARED BY | SCALE       | DRAWING NO. |
| CHECKED BY  | APPROVED BY | C-10        |
| DRAWN BY    | DATE        | SERIAL NO.  |

Palestine

Play Ground




FUNDED BY :  
THE KINGDOM OF SAUDI ARABIA  
THROUGH THE SAUDI FUND FOR  
DEVELOPMENT (SFD)



LEGEND:

FOR TENDER ONLY



| SYM.          |      |     | NAME  |   |   |   |   |
|---------------|------|-----|---|---|---|---|---|
|               |      |     |   |   |   |   |   |
|               |      |     |   |   |   |   |   |
| GRAPHIC SCALE |      |     |  |   |   |   |   |
|               |      |     | 0   | 1 | 2 | 3 | 4 |
|               |      |     |   |   |   |   |   |
|               |      |     |   |   |   |   |   |
|               |      |     |   |   |   |   |   |
| NO            | DATE | ENG | REVISIONS   |   |   |   |   |

CLIENT:

EMPLOYER:

UNITED NATIONS RELIEF AND WORKS AGENCY  
(UNRWA) THROUGH UNITED NATIONS  
DEVELOPMENT PROGRAMME (UNDP/PAPP)

CONSULTANT:

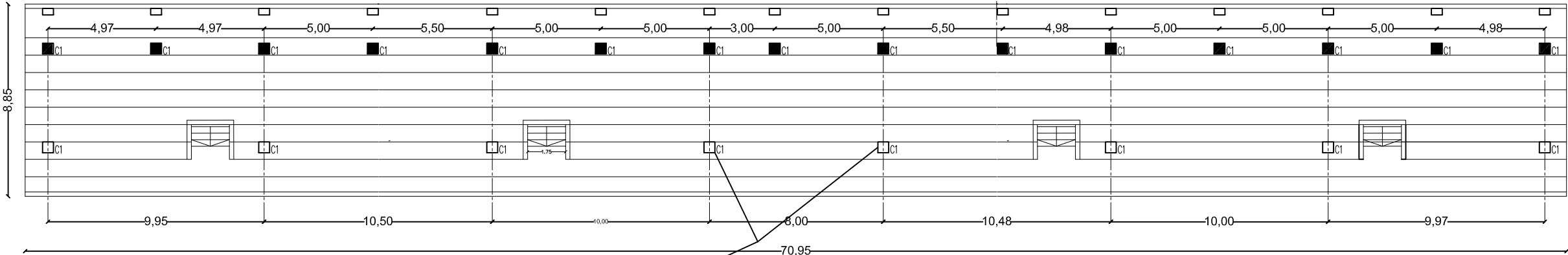
PROJECT TITLE:

Reconstruction and repair works of more  
than 150 effected houses for non-refugees  
and Rehabilitation and Furniture for five field  
playgrounds and a culture center.

Lot#11: Construction Shed For Spectators in  
5 play ground.

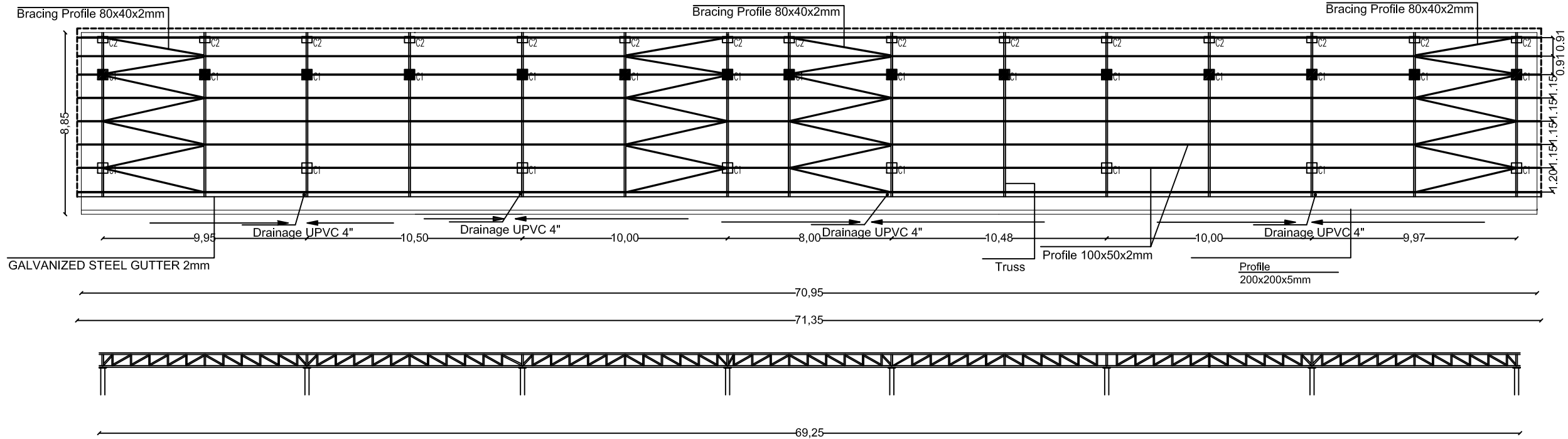
Location :  
Palestine play ground.

|             |             |             |
|-------------|-------------|-------------|
| PREPARED BY | SCALE       | DRAWING NO. |
| CHECKED BY  | APPROVED BY | C-01        |
| DRAWN BY    | DATE        | SERIAL NO.  |

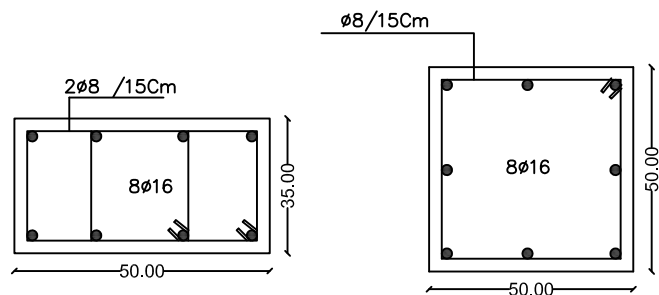


هدم وإزالة نفايات الصمعة  
إعادة صب الصمعة مع تثبيت البلاطات اللازمة

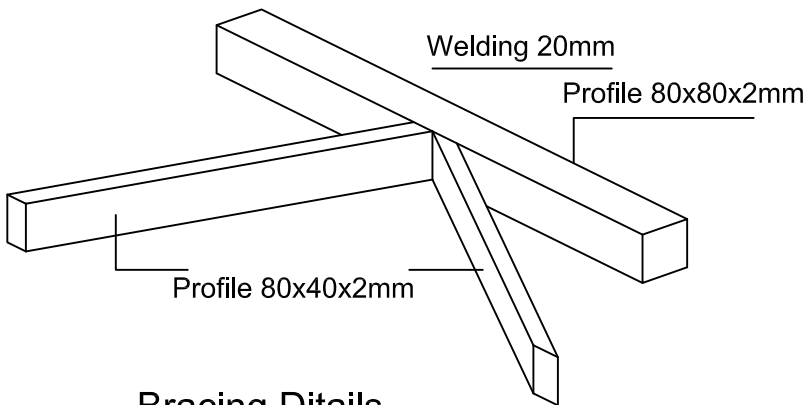
المسقط الاتقي للمدرج



المسقط الاعمى للمدرج



Columns Ditails



Bracing Ditails



FUNDED BY :

THE KINGDOM OF SAUDI ARABIA  
THROUGH THE SAUDI FUND FOR  
DEVELOPMENT (SFD)



LEGEND:

FOR TENDER ONLY



| SYM.                    | NAME      |
|-------------------------|-----------|
| GRAPHIC SCALE 0 1 2 3 4 |           |
|                         |           |
|                         |           |
|                         |           |
| NO                      | DATE      |
| ENG                     | REVISIONS |

CLIENT:

EMPLOYER:

UNITED NATIONS RELIEF AND WORKS AGENCY  
(UNRWA) THROUGH UNITED NATIONS  
DEVELOPMENT PROGRAMME (UNDP/PAPP)

CONSULTANT:

PROJECT TITLE:

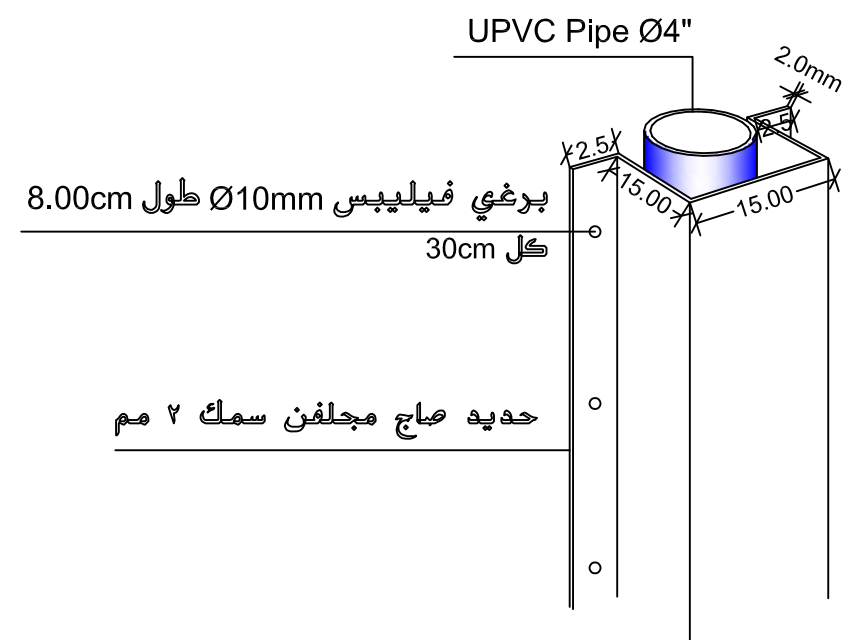
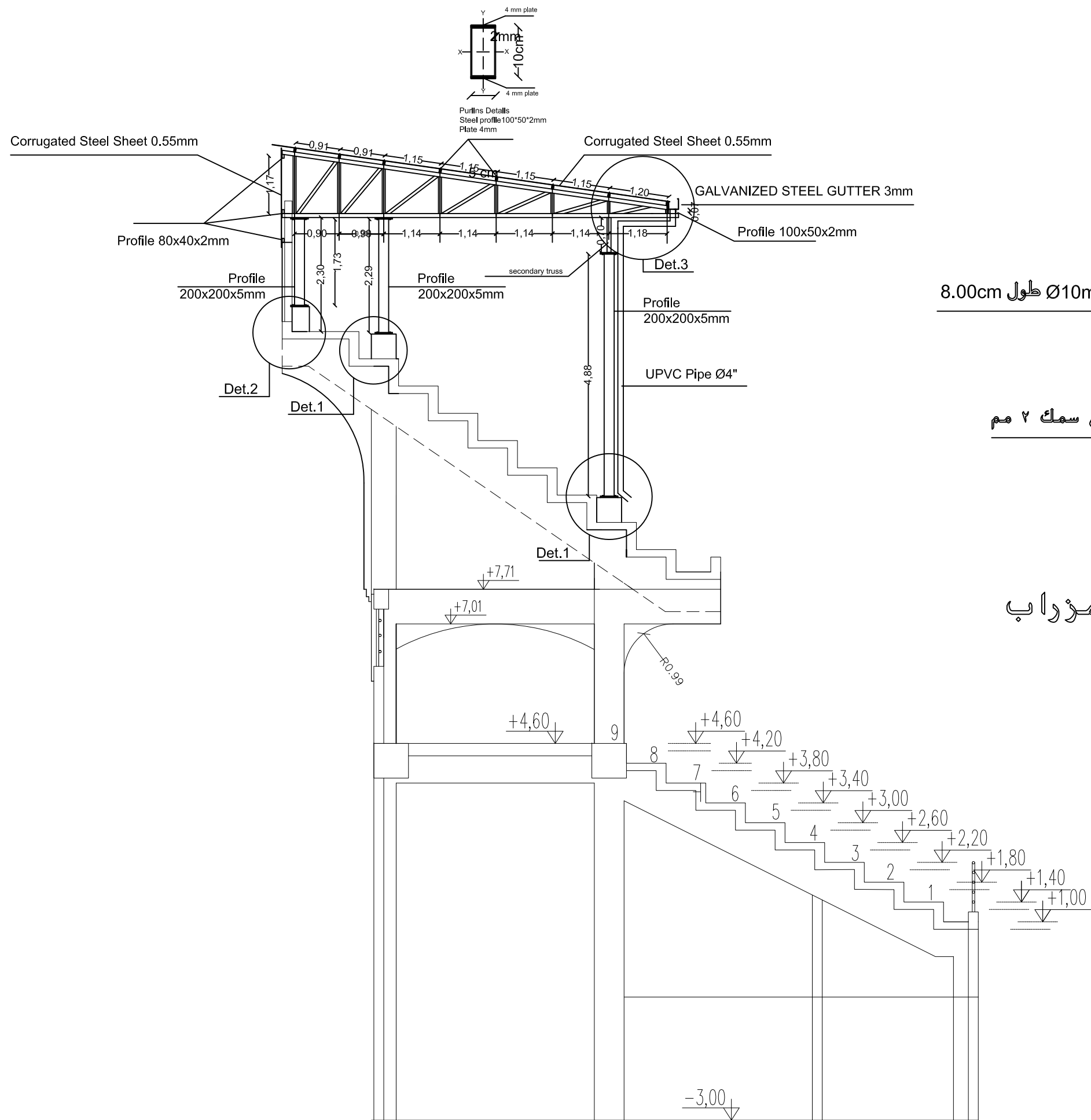
Reconstruction and repair works of more  
than 150 effected houses for non-refugees  
and Rehabilitation and Furniture for five field  
playgrounds and a culture center.

Lot#11: Construction Shed For Spectators in  
5 play ground.

Location :  
Palestine play ground.

|             |             |             |
|-------------|-------------|-------------|
| PREPARED BY | SCALE       | DRAWING NO. |
| CHECKED BY  | APPROVED BY | C-02        |
| DRAWN BY    | DATE        | SERIAL NO.  |





حديد حاج مجلفن سمك ٢ مم

تفصيلة حماية ماسورة المزراب




FUNDED BY :  
THE KINGDOM OF SAUDI ARABIA  
THROUGH THE SAUDI FUND FOR  
DEVELOPMENT (SFD)



LEGEND:

FOR TENDER ONLY



|                      |             |             |   |  |  |
|----------------------|-------------|-------------|---|--|--|
| <b>SYM.</b>          |             |             | <b>NAME</b>   |  |  |
|                      |             |             |   |  |  |
|                      |             |             |   |  |  |
| <i>GRAPHIC SCALE</i> |             |             |  |  |  |
|                      |             |             |   |  |  |
|                      |             |             |   |  |  |
|                      |             |             |   |  |  |
| <b>NO.</b>           | <b>DATE</b> | <b>ENG.</b> | <b>REVISIONS</b>  |  |  |

CLIENT:

EMPLOYER:  
UNITED NATIONS RELIEF AND WORKS AGENCY  
(UNRWA) THROUGH UNITED NATIONS  
DEVELOPMENT PROGRAMME (UNDP/PAPP)

CONSULTANT:

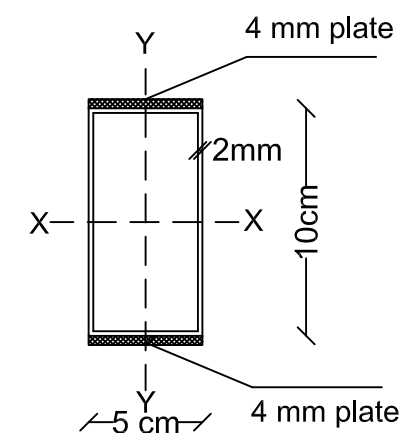
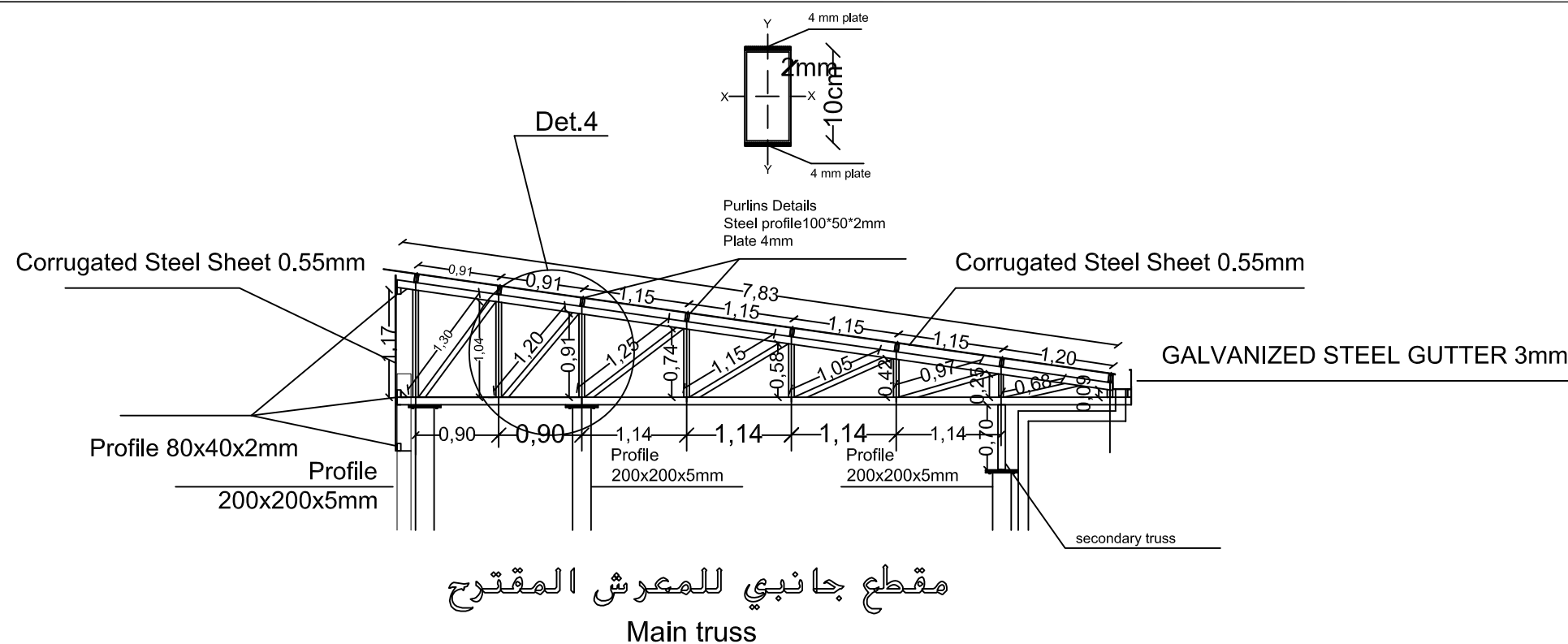
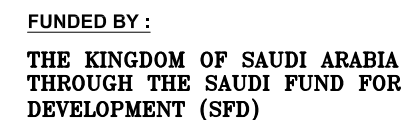
PROJECT TITLE:  
Reconstruction and repair works of more  
than 150 effected houses for non-refugees  
and Rehabilitation and Furniture for five field  
playgrounds and a culture center.

Lot#11: Construction Shed For Spectators in  
5 play ground.

Location :  
Palestine play ground.

|             |             |             |
|-------------|-------------|-------------|
| PREPARED BY | SCALE       | DRAWING NO. |
| CHECKED BY  | APPROVED BY | C-04        |
| DRAWN BY    | DATE        | SERIAL NO.  |





Purlins Details  
Steel profile 100\*50\*2mm  
Plate 4mm



|                      |             |             |                  |  |  |
|----------------------|-------------|-------------|------------------|--|--|
| <b>SYM.</b>          |             |             | <b>NAME</b>      |  |  |
|                      |             |             |                  |  |  |
| <b>GRAPHIC SCALE</b> |             |             |                  |  |  |
|                      |             |             |                  |  |  |
|                      |             |             |                  |  |  |
|                      |             |             |                  |  |  |
|                      |             |             |                  |  |  |
| <b>NO.</b>           | <b>DATE</b> | <b>ENG.</b> | <b>REVISIONS</b> |  |  |

**CLIENT:**

**EMPLOYER:**

UNITED NATIONS RELIEF AND WORKS AGENCY  
(UNRWA) THROUGH UNITED NATIONS  
DEVELOPMENT PROGRAMME (UNDP/PAPP)

**CONSULTANT:**

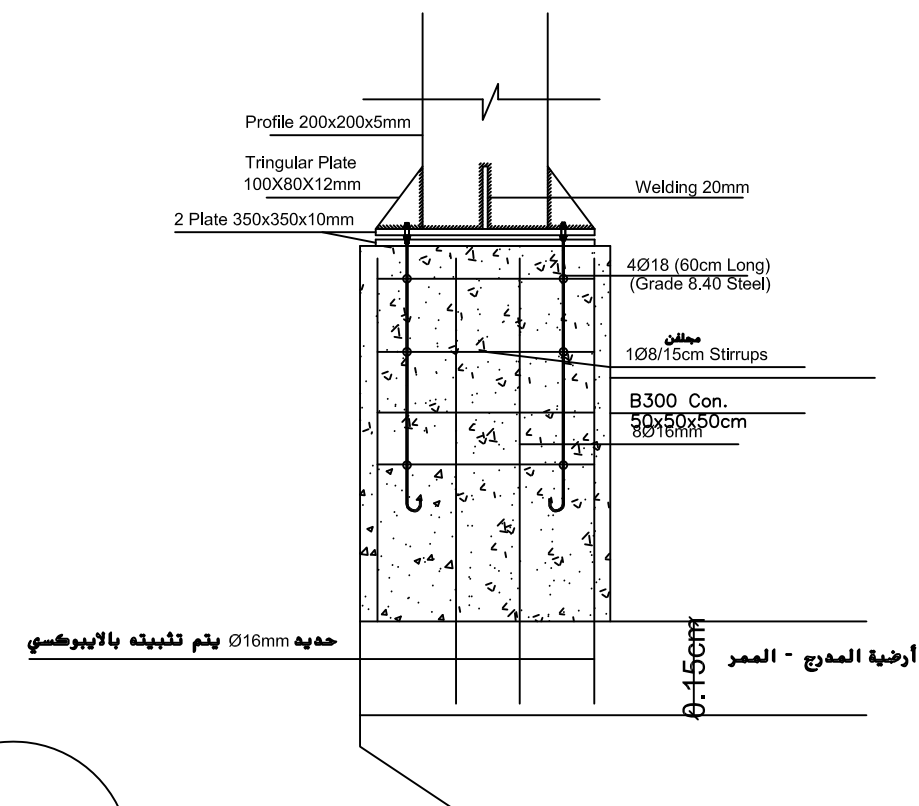
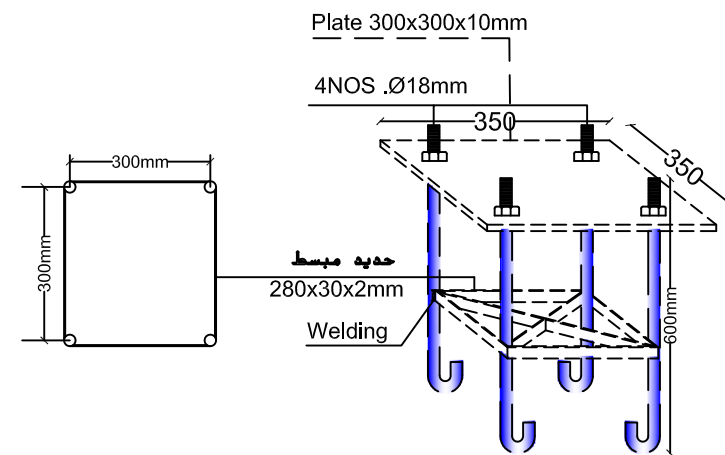
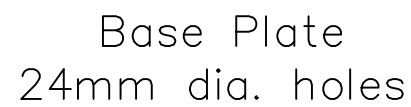
**PROJECT TITLE:**

Reconstruction and repair works of more than 150 effected houses for non-refugees and Rehabilitation and Furniture for five field playgrounds and a culture center.

Lot#11: Construction Shed For Spectators in  
5 play ground.

**Location :** Palestine play ground.

|             |             |                                   |
|-------------|-------------|-----------------------------------|
| PREPARED BY | SCALE       | DRAWING NO.<br>C-05<br>SERIAL NO. |
| CHECKED BY  | APPROVED BY |                                   |
| DRAWN BY    | DATE        |                                   |



# Det. 1

## تفاصيل قواعد الأعمدة السفلية والوسطية

**Det.2**

ملاحظات هدم وإزالة نهايات الأعمدة القائمة  
إعادة طوبار وتسليح وجب الأعمدة حسب المخططات بعد وضع

## Base Plates



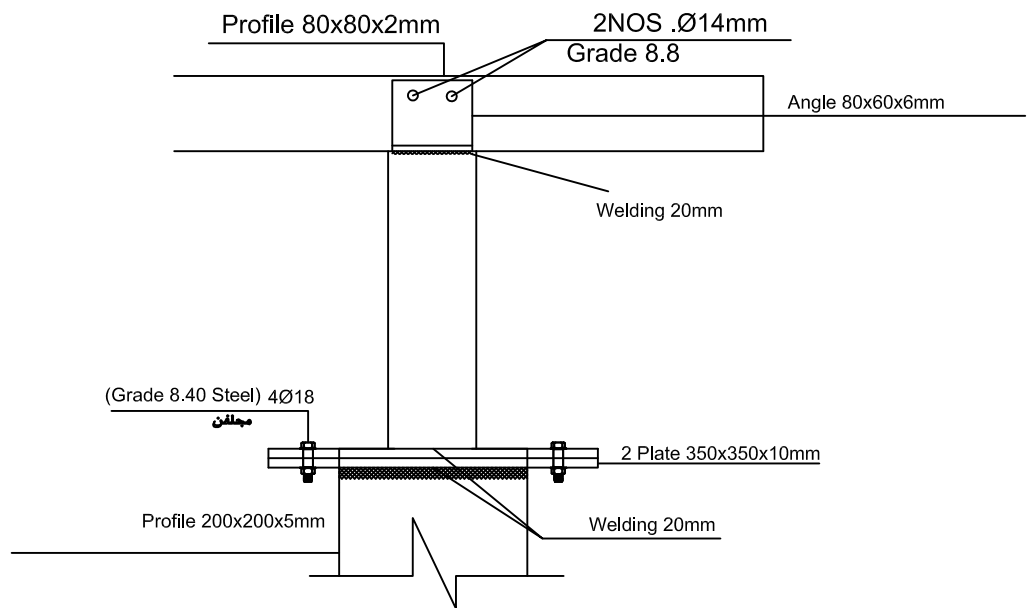
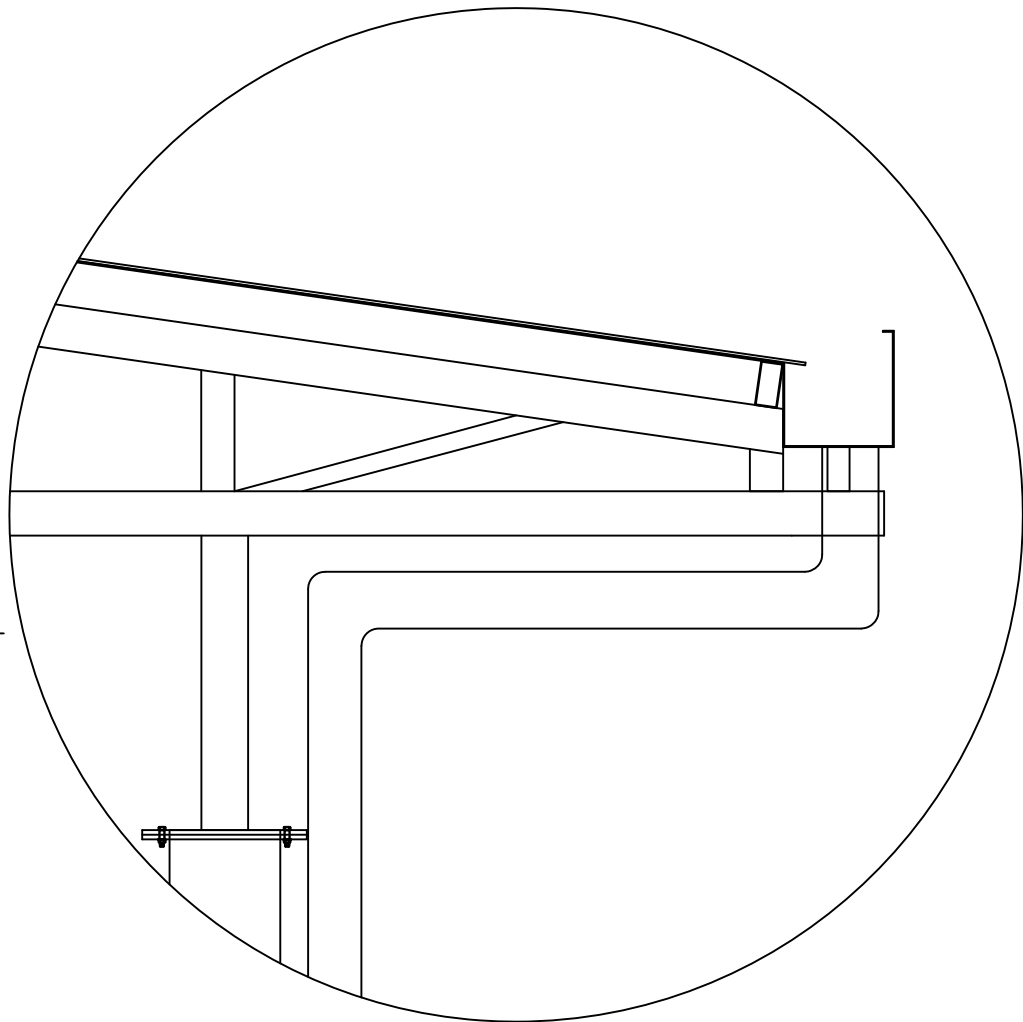
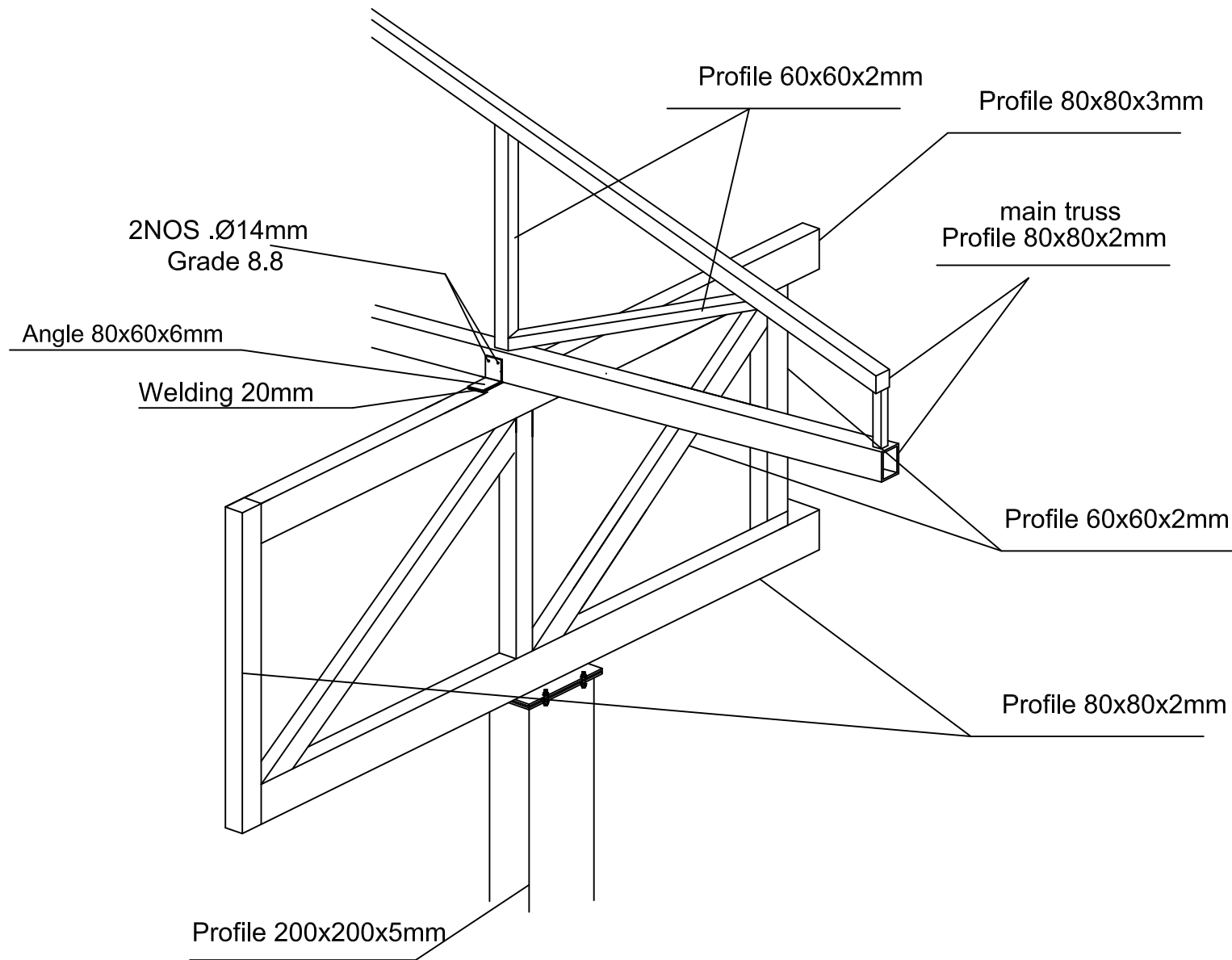
*LEGEND:*

FOR TENDER ONLY



|                      |      |     |             |  |  |
|----------------------|------|-----|-------------|--|--|
| <b>SYM.</b>          |      |     | <b>NAME</b> |  |  |
|                      |      |     |             |  |  |
| <i>GRAPHIC SCALE</i> |      |     |             |  |  |
|                      |      |     |             |  |  |
|                      |      |     |             |  |  |
|                      |      |     |             |  |  |
|                      |      |     |             |  |  |
| NO                   | DATE | ENG | REVISIONS   |  |  |

|             |             |                     |
|-------------|-------------|---------------------|
| PREPARED BY | SCALE       | DRAWING NO.<br>C-06 |
| CHECKED BY  | APPROVED BY |                     |
| DRAWN BY    | DATE        | SERIAL NO.          |



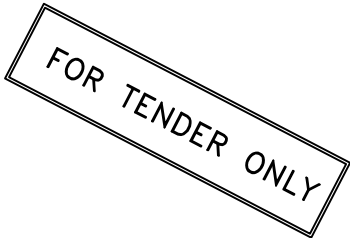
Det.3




FUNDED BY :  
THE KINGDOM OF SAUDI ARABIA  
THROUGH THE SAUDI FUND FOR  
DEVELOPMENT (SFD)



LEGEND:



| SYM.  |      | NAME |           |
|---|------|------|-----------|
|   |      |      |           |
| GRAPHIC SCALE   |      |      |           |
|  |      |      |           |
|   |      |      |           |
|   |      |      |           |
|   |      |      |           |
|   |      |      |           |
| NO  | DATE | ENG  | REVISIONS |

CLIENT:

EMPLOYER:

UNITED NATIONS RELIEF AND WORKS AGENCY  
(UNRWA) THROUGH UNITED NATIONS  
DEVELOPMENT PROGRAMME (UNDP/PAPP)

CONSULTANT:

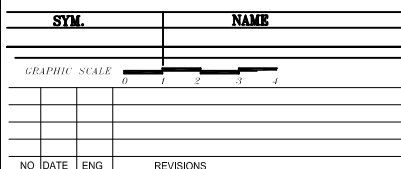
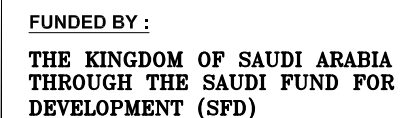
PROJECT TITLE:

Reconstruction and repair works of more  
than 150 effected houses for non-refugees  
and Rehabilitation and Furniture for five field  
playgrounds and a culture center.

Lot#11: Construction Shed For Spectators in  
5 play ground.

Location :  
Palestine play ground.

|             |             |             |
|-------------|-------------|-------------|
| PREPARED BY | SCALE       | DRAWING NO. |
| CHECKED BY  | APPROVED BY | C-07        |
| DRAWN BY    | DATE        | SERIAL NO.  |



**CLIENT:**

**EMPLOYER:**

UNITED NATIONS RELIEF AND WORKS AGENCY  
(UNRWA) THROUGH UNITED NATIONS  
DEVELOPMENT PROGRAMME (UNDP/PAPP)

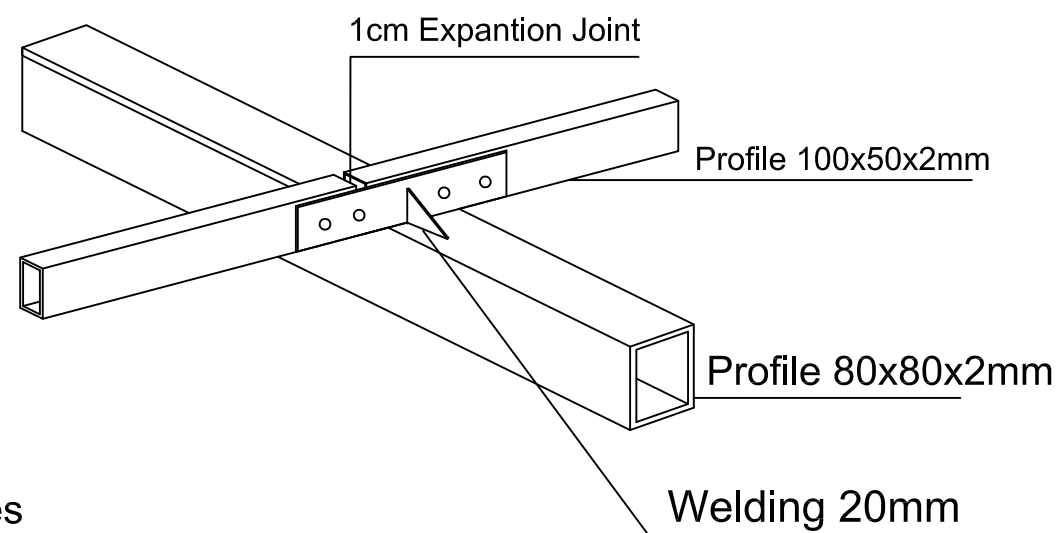
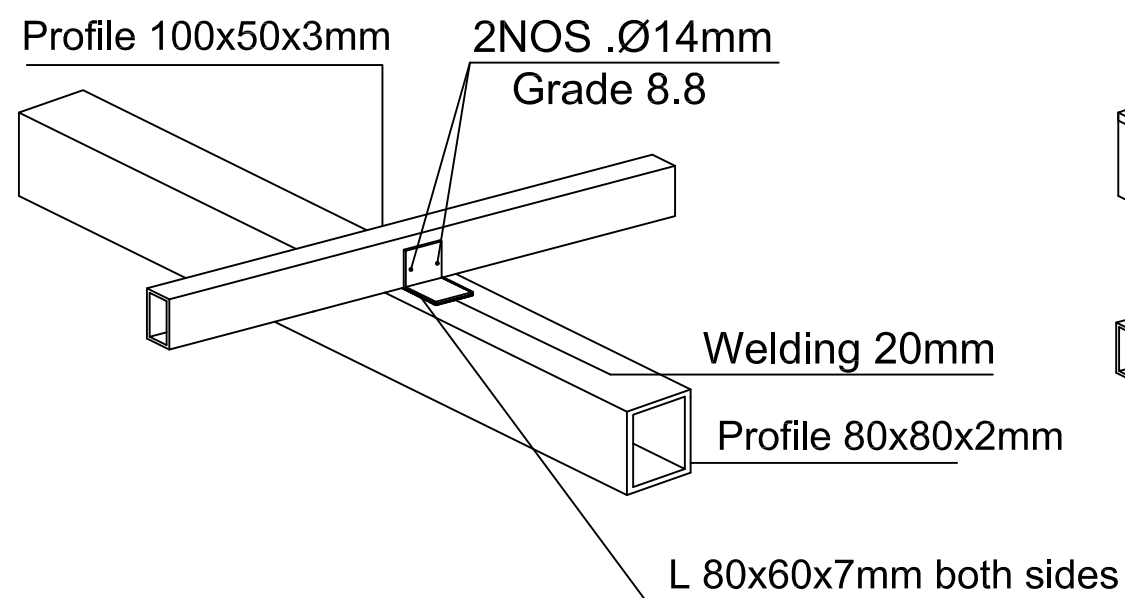
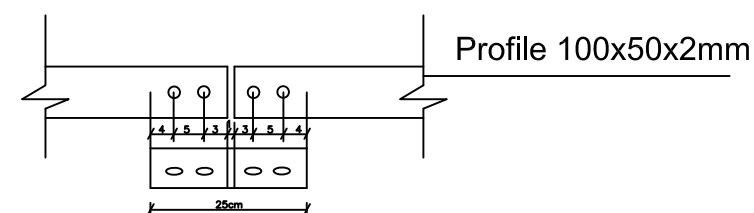
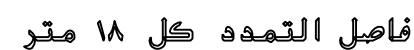
**CONSULTANT:**

**PROJECT TITLE:**

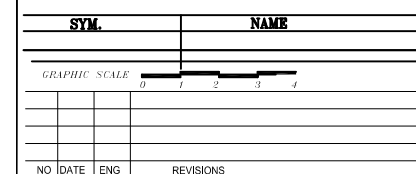
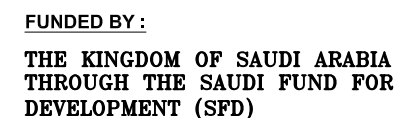
Reconstruction and repair works of more than 150 effected houses for non-refugees and Rehabilitation and Furniture for five field playgrounds and a culture center.

Location : Palestine play ground

|             |             |                     |
|-------------|-------------|---------------------|
| PREPARED BY | SCALE       | DRAWING NO.<br>C-08 |
| CHECKED BY  | APPROVED BY |                     |
| DRAWN BY    | DATE        | SERIAL NO.          |



فاصل التمدد كل ١٨ متر



**CLIENT:**

EMPLOYER:

UNITED NATIONS RELIEF AND WORKS AGENCY  
(UNRWA) THROUGH UNITED NATIONS  
DEVELOPMENT PROGRAMME (UNDP/PAPP)

**CONSULTANT:**

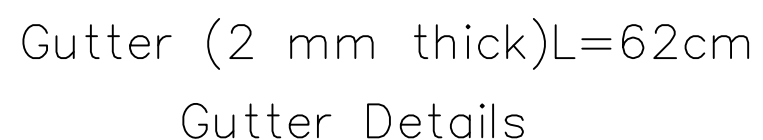
**PROJECT TITLE:**

**PROJECT TITLE:**  
Reconstruction and repair works of more than 150 effected houses for non-refugees and Rehabilitation and Furniture for five field playgrounds and a culture center.

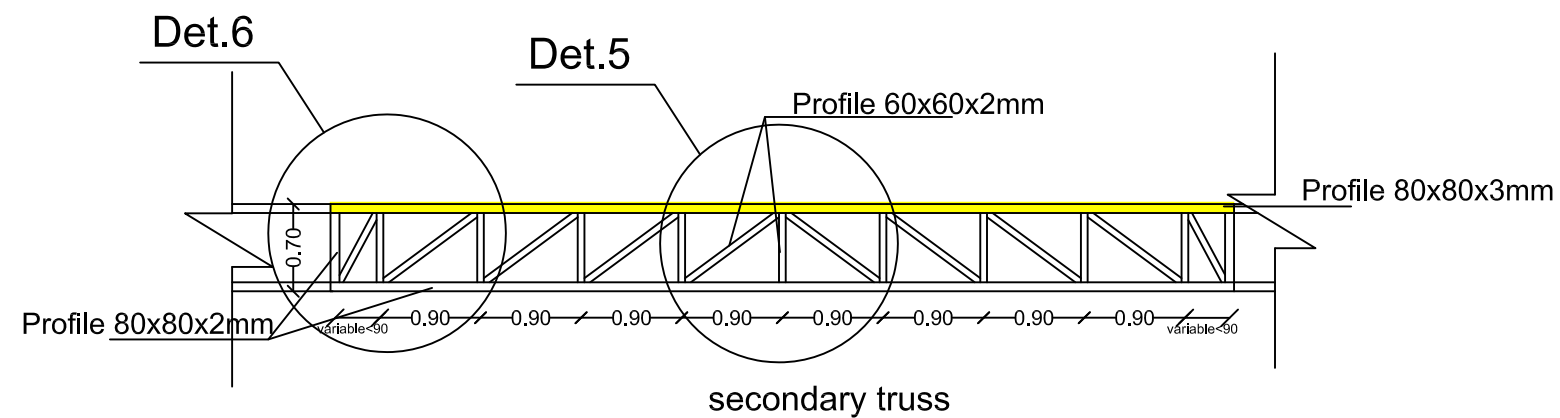
Lot#11: Construction Shed For Spectators in  
5 play ground.

|                   |                        |
|-------------------|------------------------|
| <b>Location :</b> | Palestine play ground. |
|-------------------|------------------------|

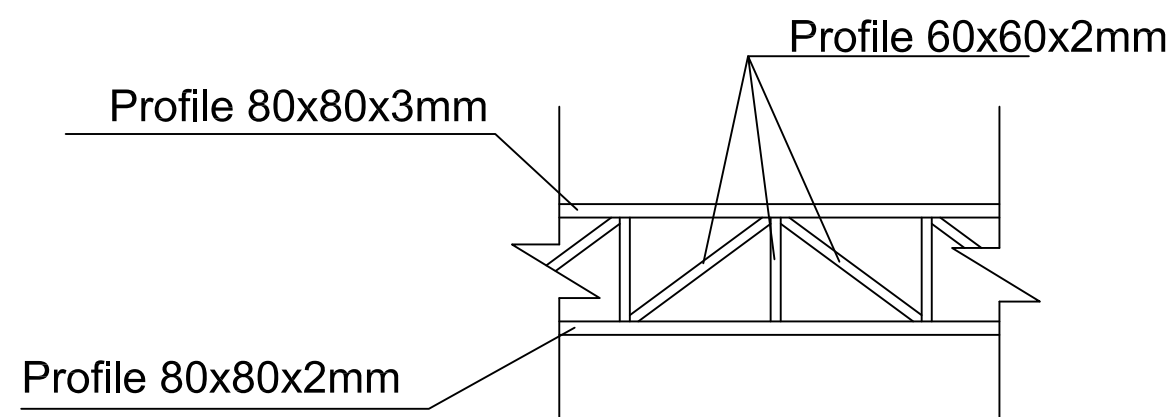
|             |             |             |
|-------------|-------------|-------------|
| PREPARED BY | SCALE       | DRAWING NO. |
| CHECKED BY  | APPROVED BY | C-0         |
| DRAWN BY    | DATE        | SERIAL NO.  |



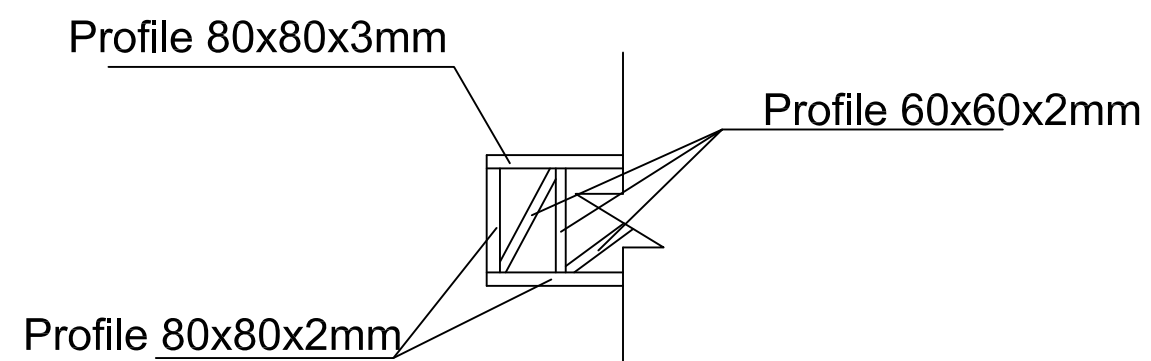
## تفاصيل أبعاد وتثبيت المزداب



## SECTION B—B



Det.5



Det.6

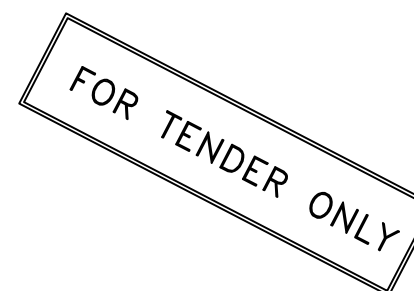


FUNDED BY :

THE KINGDOM OF SAUDI ARABIA  
THROUGH THE SAUDI FUND FOR  
DEVELOPMENT (SFD)



LEGEND:



| SYM.   | NAME        |
|--|-------------|
|  |             |
| GRAPHIC SCALE  |             |
| 0 1 2 3 4  |             |
| CLIENT:  |             |
|  |             |
|  |             |
| NO   | DATE        |
| ENG  | REVISIONS   |
| EMPLOYER:  |             |
|  |             |
| CONSULTANT:  |             |
| UNITED NATIONS RELIEF AND WORKS AGENCY<br>(UNRWA) THROUGH UNITED NATIONS<br>DEVELOPMENT PROGRAMME (UNDP/PAPP)  |             |
| PROJECT TITLE:   |             |
| Reconstruction and repair works of more<br>than 150 effected houses for non-refugees<br>and Rehabilitation and Furniture for five field<br>playgrounds and a culture center. |             |
| Lot#11: Construction Shed For Spectators in<br>5 play ground.  |             |
| Location : Palestine play ground.  |             |
| PREPARED BY  | SCALE       |
| CHECKED BY   | APPROVED BY |
| DRAWN BY   | DATE        |
| DRAWING NO.  | C-10        |
| SERIAL NO.   |             |





FUNDED BY :  
THE KINGDOM OF SAUDI ARABIA  
THROUGH THE SAUDI FUND FOR  
DEVELOPMENT (SFD)



LEGEND:

FOR TENDER ONLY



| SYM.                    | NAME |
|-------------------------|------|
| GRAPHIC SCALE 0 1 2 3 4 |      |
| CLIENT:                 |      |
| NO DATE ENG REVISIONS   |      |

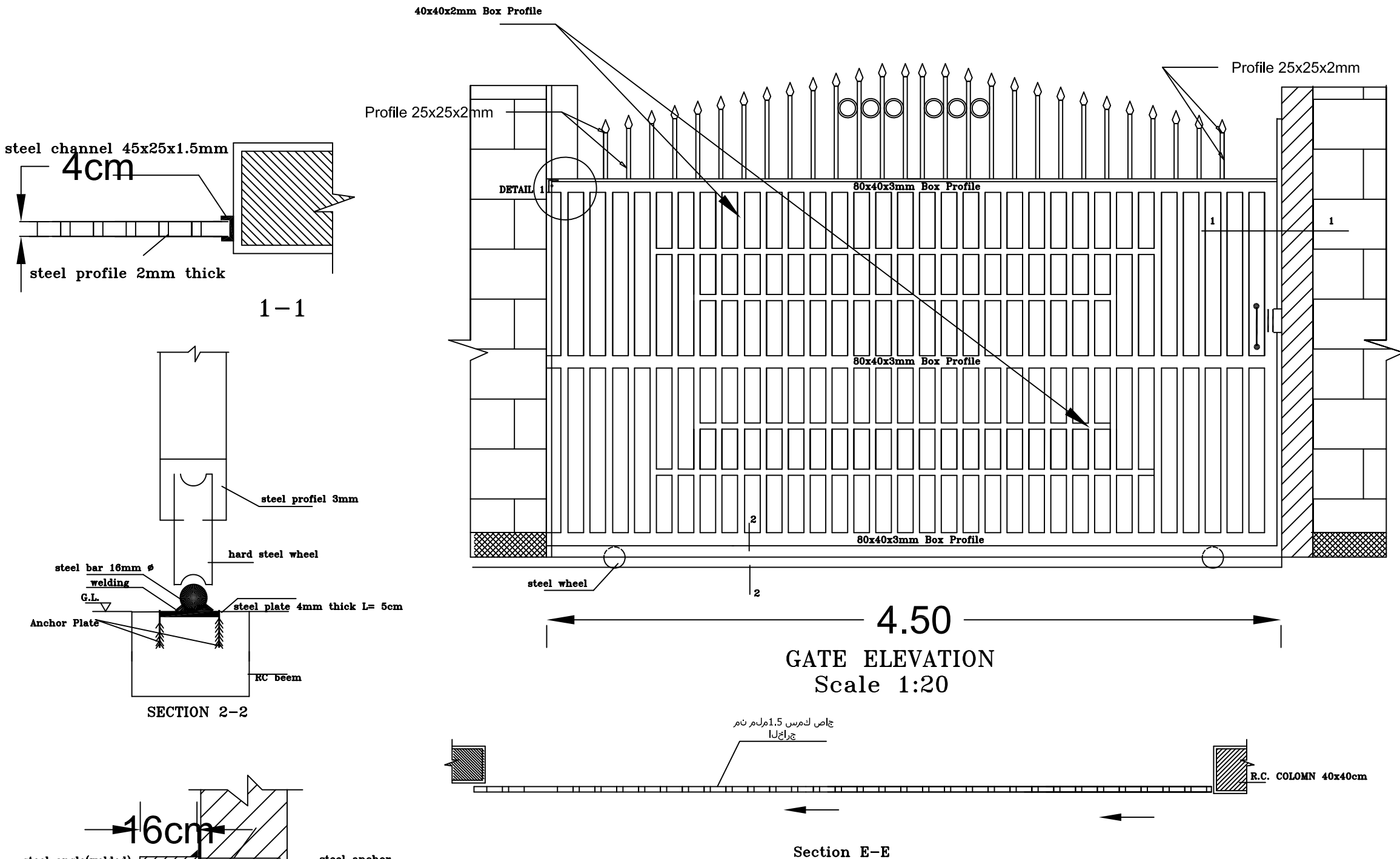
EMPLOYER:

CONSULTANT:  
UNITED NATIONS RELIEF AND WORKS AGENCY  
(UNRWA) THROUGH UNITED NATIONS  
DEVELOPMENT PROGRAMME (UNDP/PAPP)

PROJECT TITLE:  
Reconstruction and repair works of more  
than 150 effected houses for non-refugees  
and Rehabilitation and Furniture for five field  
playgrounds and a culture center.  
Lot#11: Construction Shed For Spectators in  
5 play ground.

Location : Palestine play ground.

|             |             |             |
|-------------|-------------|-------------|
| PREPARED BY | SCALE       | DRAWING NO. |
| CHECKED BY  | APPROVED BY | C-11        |
| DRAWN BY    | DATE        | SERIAL NO.  |



Steel Gate.