

SYMBOLS LEGEND

Symbol	Description
	Reference to a detail drawing Upper N°: Number of detail Lower N°: Number of sheet
	Reference to a photo First N°: Number of photo Second N°: Number of sheet
	Keynote. Intervention that corresponds to Specifications and Bill of Quantities
	Height above datum

KEYNOTES - INTERVENTION CODES

- 01 GENERAL**
- 1.1.0 Summary of work, scope & limits
 - 1.1.4 Access to the site
 - 1.5.0 Temporary facilities, controls, toilets - staging
 - 1.5.5 Vehicular access and parking
 - 1.5.6 Temporary work barriers to protect the trees, tombs
 - 1.5.6 Project identification
- 02 SITE CONDITIONS**
- 2.2.0 Site inspection
 - 2.2.2A Cutting and removal of concrete or asphalt pavement attached to wall
 - 2.2.2B Removal of concrete skylights
 - 2.2.2C Concrete structure over Museum roof
 - 2.2.2D Removal of site debris
 - 2.2.2E Concrete tank on top of Cavalier's walls
 - 2.2.3 Grafts removal
 - 2.2.4 Metal fixtures, embedded items, flagpoles, tubes etc. to be removed
 - 2.2.8 Grade adjustment for drainage
 - 2.3.1 Deviation, filling and backfilling for drainage
 - 2.6.2 Site drainage with perforated pipe
 - 2.6.2B Surface drainage with cast in place lime concrete
 - 2.6.2C Drainage of top of walls- earth surfaces
 - 2.6.2D Drainage of top of walls, parapets, embrasures- covered surfaces
 - 2.6.5 Installation of safety fence
 - 2.8.0 Site plants, growth of vegetation removal
 - 2.8.5 Site encroachment
- 03 CRACKS**
- 3.6.4 Injection grouting large cracks
- 04 MASONRY**
- 4.1.2A Installation of new ashlar stone at base of walls
 - 4.4.3B Installation of new ashlar stone at embrasures, walls and parapets
 - 4.9.0 Flats removal from masonry walls
 - 4.9.2A Mortar pointing
 - 4.9.2B Structural consolidation- collapsed retaining wall at northeast gun platform
 - 4.9.2C Structural consolidation- deformed cavalier wall
 - 4.9.2D Structural consolidation- collapsed parapet southern curtain wall
 - 4.9.2E Structural consolidation of south curtain wall
 - 4.9.5 Stone cleaning- general
 - 4.9.6 Repair of stone bulk platforms & floors
- 05 METALS**
- 5.1.1 Safety fence
 - 5.1.2 Safety bars
 - 5.1.3 Safety handrails
- 06 WOOD**
- 6.1.1 Wooden blocks
 - 6.1.2 Wooden safety bars
- 07 DRAINAGE**
- 7.0.5 Drainage system at the bottom of the monument
 - 7.0.6 Drainage system's scuppers and drain pipes
- 08 DOORS & WINDOWS**
- 8.5.3 Skylights installation
- 16 ELECTRICAL**
- 16.4.0 Electrical cables on masonry
 - 16.5.3 Emergency lighting

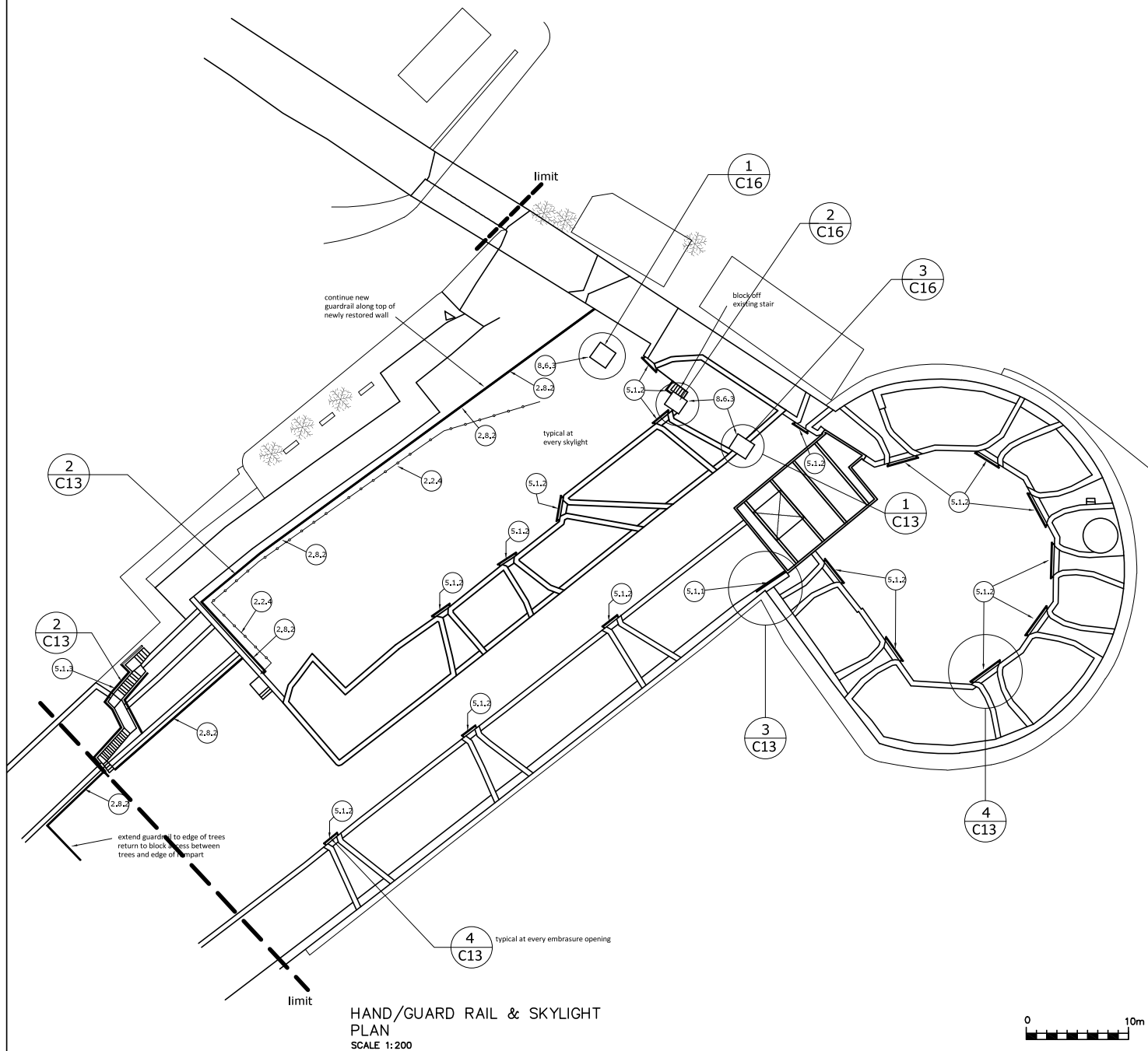


Project Designed By: MICHAEL PITTAS, SELEN AVKAN YENİADA, RAND EPİCH
ANASTASIA PİTTA, KALYPSO FOTOIU, MUGE SEVKETGLOU,
ARISTODEMOS ANASTASIADES, BYRON CHRISTOU

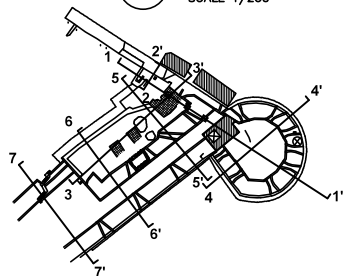
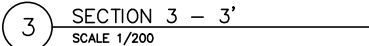
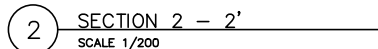
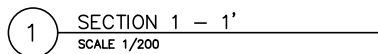
Project Name: PS-04-2017-97952 (code: C17948)
**PROJECT DESIGNS FOR CONSERVATION INTERVENTION OF
Arsenal Bastion**
Famagusta, Cyprus Conservation and Structural

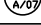
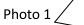


Date	December 20, 2017	Scale	In drawing
------	-------------------	-------	------------

Drawing name:	Drawing no.:
ROOF PLAN SITE INTERVENTION'S PLAN	C01



SYMBOLS LEGEND	
Symbol	Description
	Reference to a detail drawing Upper N°: Number of detail Lower N°: Number of sheet
	Reference to a photo First N°: Number of photo Second N°: Number of sheet
	Keynote. Intervention that corresponds to Specifications and Bill of Quantities
	Height above datum
KEYNOTES - INTERVENTION CODES	
01 GENERAL 1.1.0 Summary of work, scope & limits 1.1.1.4 Access to the site 1.5.0 Temporary facilities, controls, utilities - staging 1.5.5 Vehicular access and parking 1.5.6 Temporary work barriers to protect the trees, tombs 1.5.8 Project identification 02 SITE CONDITIONS 2.2.0 Site inspection 2.2.2A Cutting and removal of concrete or asphalt pavement attached to wall 2.2.2B Removal of concrete skylights 2.2.2C Concrete structure over Museum roof 2.2.2D Removal of site debris 2.2.2E Concrete tank on top of Cavalier's walls 2.2.3 Grout removal 2.2.4 Metal fixtures, embedded items, flagpoles, tubes etc. to be removed 2.2.5 Grade adjustment for drainage 2.3.1 Excavation, filling and backfilling for drainage 2.4.2 Site drainage with perforated pipe 2.6.2B Surface drainage with cast in place lime concrete 2.6.2C Drainage of top of walls- earth surfaces 2.6.2D Drainage of top of walls, parapets, embrasures- covered surfaces 2.8.2 Installation of safety fence 2.9.0 Site plants, growth of vegetation removal 2.9.5 Site encroachment 03 CRACKS 3.5.4 Injection grouting large cracks 04 MASONRY 4.4.3A Installation of new ashlar stone at base of walls 4.4.3B Installation of new ashlar stone at embrasures, walls and parapets 4.9.0 Flint removal from masonry walls 4.9.2A Mortar pointing 4.9.2.B Structural consolidation- collapsed retaining wall at northeast gun platform 4.9.2.C Structural consolidation- deformed cavalier wall 4.9.2.D Structural consolidation- collapsed parapet southern curtain wall 4.9.2.E Structural consolidation of south curtain wall 4.9.5 Stone cleaning- general 4.9.6 Repair of stone built platforms & floors 05 METALS 5.1.1 Safety fence 5.1.2 Safety bars 5.1.3 Safety handrails 06 WOOD 6.1.1 Wooden blocks 6.1.2 Wooden safety bars 07 DRAINAGE 7.0.5 Drainage system at the bottom of the monument 7.0.6 Drainage system's scuppers and drain pipes 08 DOORS & WINDOWS 8.6.3 Skylights installation 16 ELECTRICAL 16.4.0 Electrical cables on masonry 16.5.3 Emergency lighting	
 United Nations Development Program Program funded by EUROPEAN UNION	
Project Designed By: MICHAEL PITTAS, SELEN AVKAN YENIADA, RAND EPPICH ANASTASIA PITTA, KALYPSO FOTIOU, MUGE SEVKETOGLU, ARISTODEMOS ANASTASIADES, BYRON CHRISTOU	
Project Name: PS-04-2017-97952 (code: C17948) PROJECT DESIGNS FOR CONSERVATION INTERVENTION OF Arsenal Bastion Famagusta, Cyprus <i>Conservation and Structural</i>	
Date	December 20, 2017
Scale	In drawing
Drawing name:	Drawing no.
HAND/GUARD RAIL & SKYLIGHT PLAN	C03



SYMBOLS LEGEND	
Symbol	Description
	Reference to a detail drawing Upper N°: Number of detail Lower N°: Number of sheet
	Reference to a photo First N°: Number of photo Second N°: Number of sheet
	Keynote. Intervention that corresponds to Specifications and Bill of Quantities
	Height above datum

- 1.1.0 Summary of work, scope & limits
- 1.1.4 Access to the site
- 1.5.0 Temporary facilities, controls, utilities - staging
- 1.5.5 Vehicular access and parking
- 1.5.6 Temporary work barriers to protect the trees, turbs
- 1.5.8 Project identification
- 02 SITE CONDITIONS**
- 2.0.2 Site inspection
- 2.2.2A Cutting and removal of concrete or asphalt pavement attached to wall
- 2.2.2B Removal of concrete skylights
- 2.2.2C Concrete structure over Museum roof
- 2.2.2D Removal of site debris
- 2.2.2E Concrete tank on top of Cavalier's walls
- 2.2.3 Graffiti removal
- 2.2.4 Metal tubes, embedded items, flagpoles, tubes etc. to be removed
- 2.2.8 Grade adjustment for drainage
- 2.3.1 Excavation, filling and backfilling for drainage
- 2.4.2 Site drainage with perforated pipe
- 2.6.2B Surface drainage with cast in place in concrete
- 2.6.2C Drainage of top of walls- earth surfaces
- 2.6.2D Drainage of top of walls, parapets, embasuries- covered surfaces
- 2.6.3 Installation of safety fence
- 2.9.0 Site plants, growth of vegetation removal
- 2.9.5 Site encroachment
- 03 CRACKS**
- 3.6.4 Injection grouting large cracks
- 04 MASONRY**
- 4.3.3A Installation of new ashlar stone at base of walls
- 4.3.3B Installation of new ashlar stone at embasuries, walls and parapets
- 4.3.3C Repair of masonry walls
- 4.9.2A Mortar pointing
- 4.9.2.5 Structural consolidation- collapsed retaining wall at northeast gun platform
- 4.9.2.6 Structural consolidation- deformed cavity wall
- 4.9.2.7 Structural consolidation- collapsed parapet southern curtain wall
- 4.9.2.8 Structural consolidation- collapsed parapet of south curtain wall
- 4.9.5 Stone cleaning- general
- 4.9.6 Repair of stone built platforms & floors
- 05 METALS**
- 5.1.1 Safety fence
- 5.1.2 Safety bars
- 5.1.3 Safety handrails
- 06 WOOD**
- 6.1.1 Wooden blocks
- 6.2 Wooden safety bars
- 07 DRAINAGE**
- 7.0.5 Drainage system at the bottom of the monument
- 7.0.6 Drainage system's sumpers and drain pipes
- 08 DOORS & WINDOWS**
- 8.3 Skylight installation
- 16 ELECTRICAL**
- 16.4.0 Electrical cables on masonry
- 16.5.3 Emergency lighting



Project Designed By: MICHAEL PITTAS, SELEN AVKAN YENIADA, RAND EPPICH
ANASTASIA PITTA, KALYPSO FOTIOU, MUGE SEVKETOGLU,
ARISTODEMOS ANASTASIADES, BYRON CHRISTOU

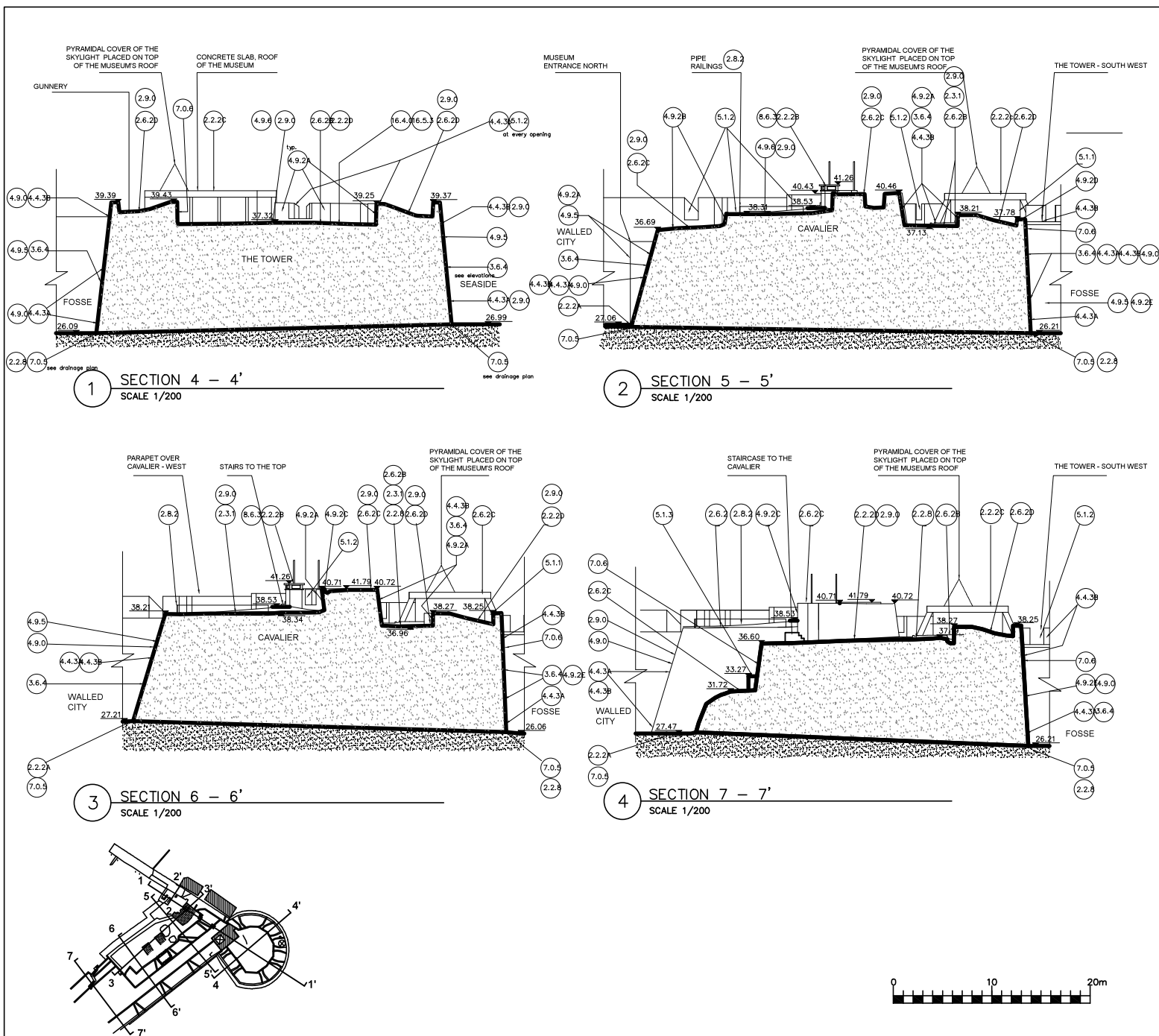
Project Name: PS-04-2017-97952 (code: C17948)
PROJECT DESIGNS FOR CONSERVATION INTERVENTION OF
Arsenal Bastion
Famagusta, Cyprus *Conservation and Structural*

Date	December 20, 2017	Scale	In drawing
------	-------------------	-------	------------

Drawing name:	Drawing no.:
---------------	--------------

SECTIONS 1 - 1', 2 - 2',
3 - 3' INTERVENTIONS

C04



SYMBOLS LEGEND	
Symbol	Description
	Reference to a detail drawing Upper N°: Number of detail Lower N°: Number of sheet
	Reference to a photo First N°: Number of photo Second N°: Number of sheet
	Keynote. Intervention that corresponds to Specifications and Bill of Quantities
	Height above datum

KEYNOTES - INTERVENTION CODES	
01 GENERAL	
1.1.0	Summary of work, scope & limits
1.1.4	Access to the site
1.5.0	Temporary facilities, controls, utilities - staging
1.5.5	Vehicular access and parking
1.5.6	Temporary work barriers to protect the trees, lamps
02 SITE CONDITIONS	
2.1.0	Site inspection
2.2.2A	Cutting and removal of concrete or asphalt pavement attached to wall
2.2.2B	Removal of concrete skylights
2.2.2C	Concrete structure over Museum roof
2.2.2D	Removal of site debris
2.2.2E	Concrete tank on top of Cavalier's walls
2.2.3	Graffiti removal
2.2.4	Metal fixtures, embedded items, flagpoles, tubes etc. to be removed
2.2.5	Grade adjustment for drainage
2.3.1	Excavation, filling and backfilling for drainage
2.6.2	Site drainage with perforated pipes
2.6.2B	Surface drainage with cast in place fine concrete
2.6.2C	Drainage of top of walls - earth surfaces
2.6.2D	Drainage of top of walls, parapets, embrasures - covered surfaces
2.6.2	Installation of safety fence
2.9.0	Site plants, growth of vegetation removal
2.9.5	Site encroachment
03 CRACKS	
3.6.4	Injection grouting large cracks
04 MASONRY	
4.4.3A	Installation of new solar stone at base of walls
4.4.3B	Installation of new solar stone at embrasures, walls and parapets
4.9.0	Plant removal from masonry walls
4.9.2A	Mortar pointing
4.9.2B	Structural consolidation - collapsed retaining wall at northeast gun platform
4.9.2C	Structural consolidation - deformed cavalier wall
4.9.2D	Structural consolidation - collapsed parapet southern curtain wall
4.9.2E	Structural consolidation of south curtain wall
4.9.5	Stone cleaning - general
4.9.5	Repair of stone built platforms & floors
05 METALS	
5.1.1	Safety fence
5.1.2	Safety bars
5.1.3	Safety handrails
06 WOOD	
6.1.1	Wooden blocks
6.1.2	Wooden safety bars
07 DRAINAGE	
7.0.5	Drainage system at the bottom of the monument
7.0.6	Drainage system's scuppers and drain pipes
08 DOORS & WINDOWS	
8.6.3	Skylights installation
09 ELECTRICAL	
16.4.0	Electrical cables on masonry
16.5.3	Emergency lighting

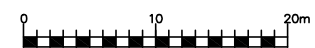


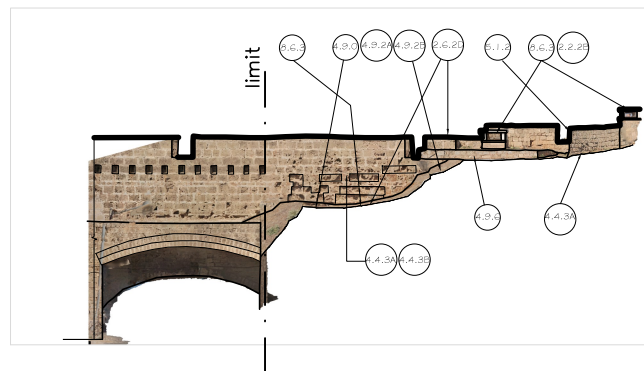
Project Designed By: MICHAEL PITTAS, SELEN AVKAN YENIADA, RAND EPPICH
ANASTASIA PITTA, KALYPSO FOTIOU, MUGE SEVKETOGLU,
ARISTODEMOS ANASTASIADES, BYRON CHRISTOU

Project Name: PS-04-2017-97952 (code: C17948)
PROJECT DESIGNS FOR CONSERVATION INTERVENTION OF
Arsenal Bastion
Famagusta, Cyprus *Conservation and Structural*

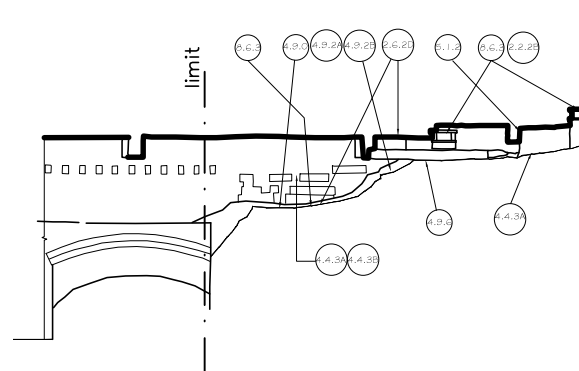
Date: December 20, 2017 Scale: In drawing

Drawing name: SECTIONS 4 - 4', 5 - 5', 6 - 6', 7 - 7', INTERVENTIONS Drawing no.: C05



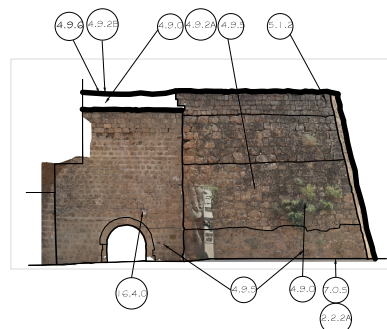


1 PARAPET OVER CAVALIER – WEST with orthophoto
SCALE 1/150

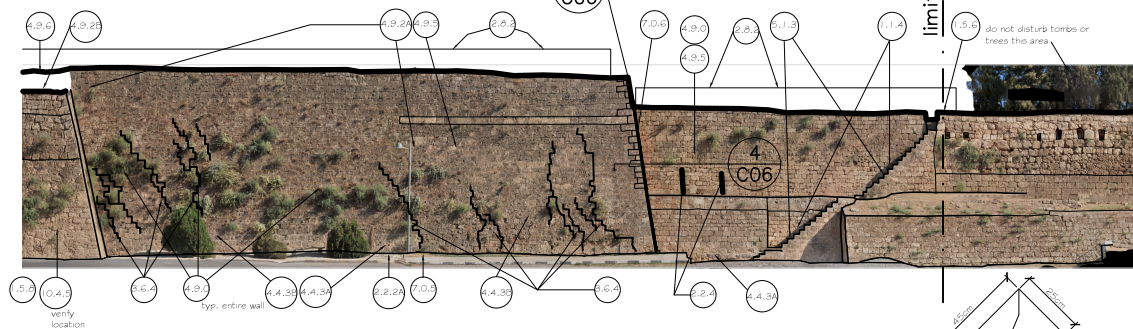


1a PARAPET OVER CAVALIER – WEST
SCALE 1/150

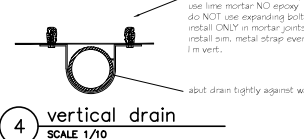
FOR WALL REPAIRS 4.4.3A, 4.4.3B, 4.9.2E etc. REFER TO THE PHOTO ANNEX SPECIFICATIONS



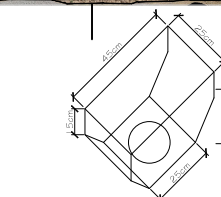
2 CAVALIER NORTH MUSEUM ENTRANCE with orthophoto
SCALE 1/150



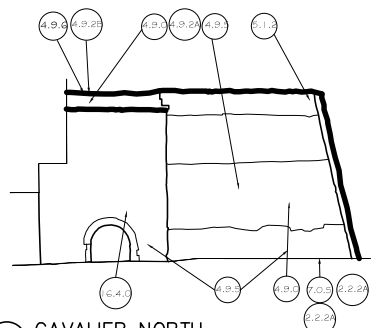
3 CAVALIER AND CURTAIN WALL NORTH with orthophoto
SCALE 1/150



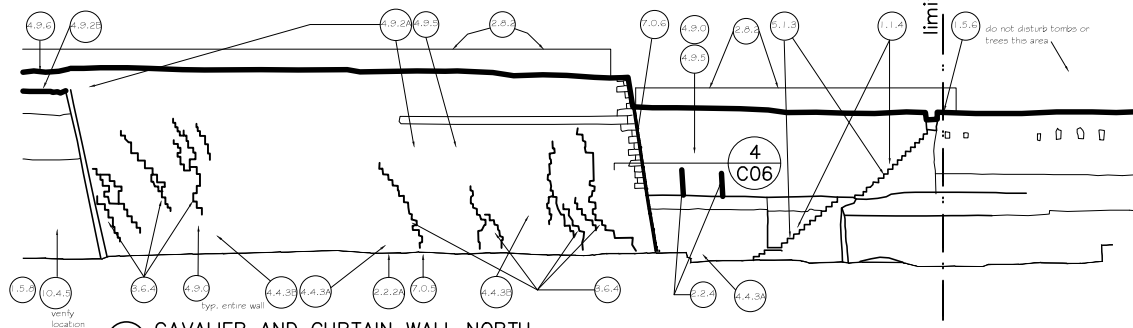
4 vertical drain
SCALE 1/10



5 scupper's shape
SCALE 1/10



2a CAVALIER NORTH MUSEUM ENTRANCE
SCALE 1/150



3a CAVALIER AND CURTAIN WALL NORTH
SCALE 1/150



SYMBOLS LEGEND	
Symbol	Description
	Reference to a detail drawing Upper N°: Number of detail Lower N°: Number of sheet
	Reference to a photo First N°: Number of photo Second N°: Number of sheet
	Keynote. Intervention that corresponds to Specifications and Bill of Quantities
	Height above datum

KEYNOTES - INTERVENTION CODES

- 01 GENERAL
- 1.1.0 Summary of work, scope & limits
 - 1.1.4 Access to the site
 - 1.5.0 Temporary facilities, controls, utilities - staging
 - 1.5.5 Vehicular access and parking
 - 1.5.6 Temporary work barriers to protect the trees, tombs
 - 1.5.8 Project identification
- 02 SITE CONDITIONS
- 2.2.0 Site inspection
 - 2.2.2A Cutting and removal of concrete or asphalt pavement attached to wall
 - 2.2.2B Removal of concrete skylights
 - 2.2.2C Concrete structure over Museum roof
 - 2.2.2D Removal of site debris
 - 2.2.2E Concrete tank on top of Cavalier's walls
 - 2.2.3 Grills removal
 - 2.2.4 Metal fixtures, embedded items, flagpoles, tubes etc. to be removed
 - 2.2.5 Grade adjustment for drainage
 - 2.3.1 Excavation, filling and backfilling for drainage
 - 2.6.2 Site drainage with perforated pipe
 - 2.6.2B Surface drainage with cast in place lime concrete
 - 2.6.2C Drainage of top of walls- earth surfaces
 - 2.6.2D Drainage of top of walls, parapets, embrasures- covered surfaces
 - 2.8.2 Installation of safety fence
 - 2.9.0 Site plants, growth of vegetation removal
 - 2.9.5 Site encroachment
- 03 CRACKS
- 3.6.4 Injection grouting large cracks
- 04 MASONRY
- 4.4.3A Installation of new ashlar stone at base of walls
 - 4.4.3B Installation of new ashlar stone at embrasures, walls and parapets
 - 4.9.0 Plant removal from masonry walls
 - 4.9.2A Mortar pointing
 - 4.9.2B Structural consolidation- collapsed retaining wall at northeast gun platform
 - 4.9.2C Structural consolidation- deformed cavalier wall
 - 4.9.2D Structural consolidation- collapsed parapet southern curtain wall
 - 4.9.2E Structural consolidation of south curtain wall
 - 4.9.5 Stone cleaning- general
 - 4.9.6 Repair of stone built platforms & floors
- 05 METALS
- 5.1.1 Safety fence
 - 5.1.2 Safety bars
 - 5.1.3 Safety handrails
- 06 WOOD
- 6.1.1 Wooden blocks
 - 6.1.2 Wooden safety bars
- 07 DRAINAGE
- 7.0.5 Drainage system at the bottom of the monument
 - 7.0.6 Drainage system's scuppers and drain pipes
- 08 DOORS & WINDOWS
- 8.6.3 Skylight installation
- 16 ELECTRICAL
- 16.4.0 Electrical cables on masonry
 - 16.5.2 Emergency lighting

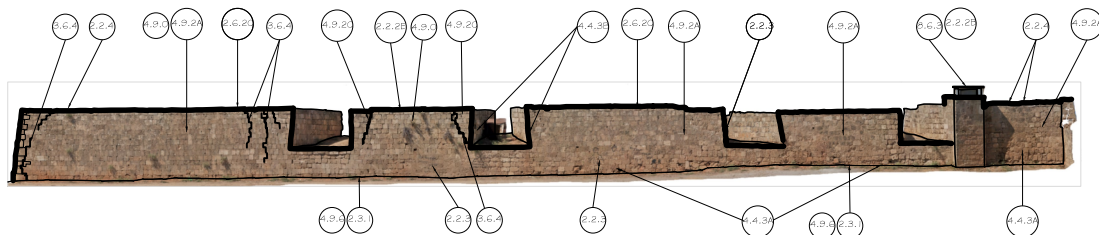


Project Designed By: MICHAEL PITTAS, SELEN AVKAN YENIADA, RAND EPPICH
ANASTASIA PITTA, KALYPSO FOTIOU, MUGE SEVNETOGLU,
ARISTODEMOS ANASTASIADES, BYRON CHRISTOU

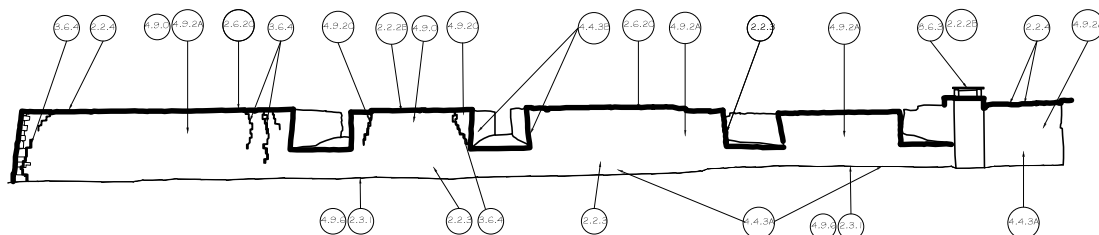
Project Name: PS-04-2017-97952 (code: C17948)
PROJECT DESIGNS FOR CONSERVATION INTERVENTION OF
Arsenal Bastion
Famagusta, Cyprus Conservation and Structural

Date: December 20, 2017 Scale: In drawing

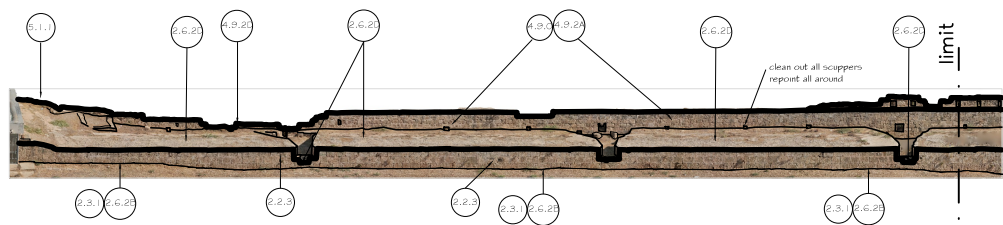
Drawing name: ELEVATIONS 1/6
MUSEUM & CAVALIER NORTH & WEST
INTERVENTIONS
Drawing no.: C06



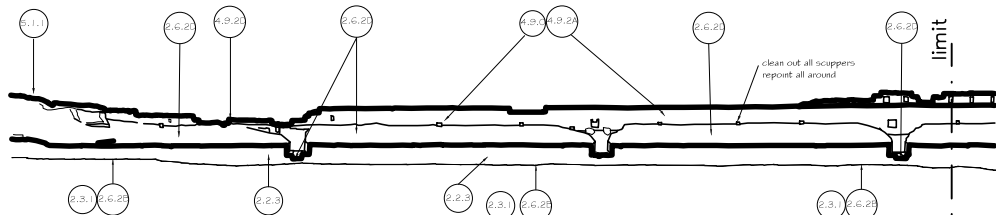
1 CAVALIER – SOUTH ELEVATION
with orthophoto
SCALE 1/150



1a CAVALIER – SOUTH ELEVATION
SCALE 1/150

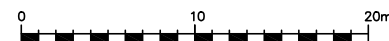


2 RAMPART PARAPET – NORTH
ELEVATION with orthophoto
SCALE 1/150



2a RAMPART PARAPET – NORTH
ELEVATION
SCALE 1/150

FOR WALL REPAIRS 4.4.3A, 4.4.3B, 4.9.2E etc.
REFER TO THE PHOTO ANNEX SPECIFICATIONS



SYMBOLS LEGEND

Symbol	Description
	Reference to a detail drawing Upper N°: Number of detail Lower N°: Number of sheet
	Reference to a photo First N°: Number of photo Second N°: Number of sheet
	Keynote. Intervention that corresponds to Specifications and Bill of Quantities
	Height above datum

KEYNOTES - INTERVENTION CODES

- O1 GENERAL**
- 1.1.0 Summary of work, scope & limits
 - 1.1.4 Access to the site
 - 1.5.0 Temporary facilities, controls, utilities - staging
 - 1.5.3 Vehicular access and parking
 - 1.5.6 Temporary work barriers to protect the trees, lands
 - 1.5.8 Project identification
- O2 SITE CONDITIONS**
- 2.2.0 Site inspection
 - 2.2.2A Cutting and removal of concrete or asphalt pavement attached to wall
 - 2.2.2B Removal of concrete skylights
 - 2.2.2C Concrete structure over Museum roof
 - 2.2.2D Removal of site debris
 - 2.2.2E Concrete tank on top of Cavalier's walls
 - 2.2.3 Graffiti removal
 - 2.2.4 Metal fixtures, embedded items, flagpoles, tubes etc. to be removed
 - 2.2.5 Grade adjustment for drainage
 - 2.3.1 Excavation, filling and backfilling for drainage
 - 2.6.2 Site drainage with perforated pipe
 - 2.6.2B Surface drainage with cast in place lime concrete
 - 2.6.2C Drainage of top of walls- earth surfaces
 - 2.6.2D Drainage of top of walls, parapets, embrasures- covered surfaces
 - 2.8.2 Installation of safety fence
 - 2.9.0 Site plants, growth of vegetation removal
 - 2.9.5 Site encroachment
- O3 CRACKS**
- 3.6.4 Injection grouting large cracks
- O4 MASONRY**
- 4.4.3A Installation of new ashlar stone at base of walls
 - 4.4.3B Installation of new ashlar stone at embrasures, walls and parapets
 - 4.9.0 Plaster removal from masonry walls
 - 4.9.2A Mortar pointing
 - 4.9.2B Structural consolidation- collapsed retaining wall at northeast gun platform
 - 4.9.2C Structural consolidation- deformed cavalier wall
 - 4.9.2D Structural consolidation- collapsed parapet-southern curtain wall
 - 4.9.2E Structural consolidation of south curtain wall
 - 4.9.3 Stone cleaning- general
 - 4.9.6 Repair of stone built platforms & floors
- O5 METALS**
- 5.1.1 Safety fence
 - 5.1.2 Safety bars
 - 5.1.3 Safety handrails
- O6 WOOD**
- 6.1.1 Wooden blocks
 - 6.1.2 Wooden safety bars
- O7 DRAINAGE**
- 7.0.5 Drainage system at the bottom of the monument
 - 7.0.6 Drainage system's scuppers and drain pipes
- O8 DOORS & WINDOWS**
- 8.6.3 Skylights installation
- I6 ELECTRICAL**
- 1.6.4.0 Electrical cables on masonry
 - 1.6.5.3 Emergency lighting

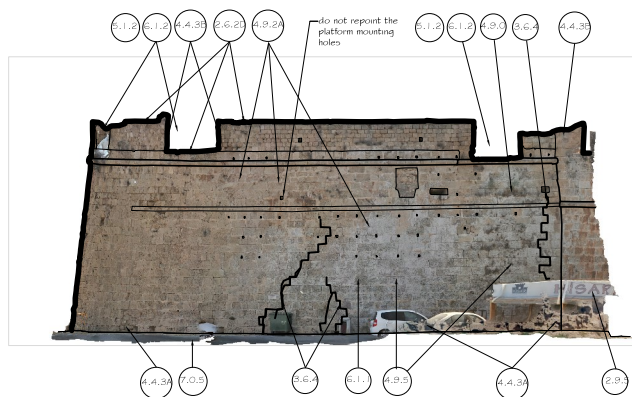


Project Designed By: MICHAEL PITTAS, SELEN AVKAN YENIADA, RAND EPPICH
ANASTASIA PITTA, KALYPSO FOTIOU, MUGE SEVKETOGLU,
ARISTODEMOS ANASTASIADIS, BYRON CHRISTOU

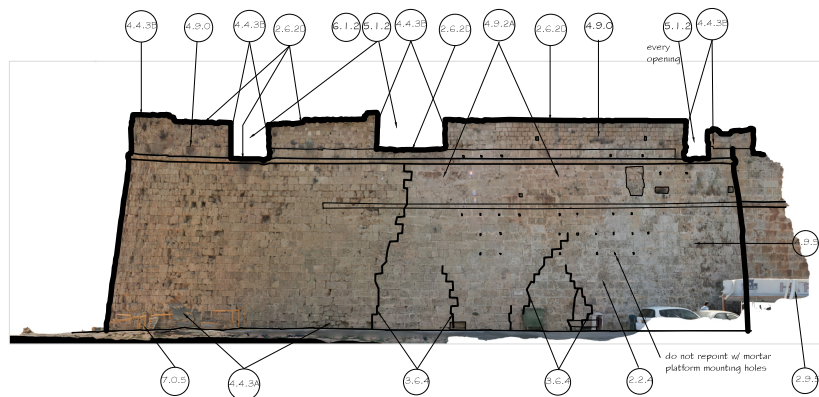
Project Name: PS-04-2017-97952 (code: C17948)
PROJECT DESIGNS FOR CONSERVATION INTERVENTION OF
Arsenal Bastion
Famagusta, Cyprus Conservation and Structural

Date: December 20, 2017 Scale: In drawing

Drawing name: ELEVATIONS 2/6
CAVALIER NORTH, RAMPART SOUTH
INTERVENTIONS
Drawing no.: C07

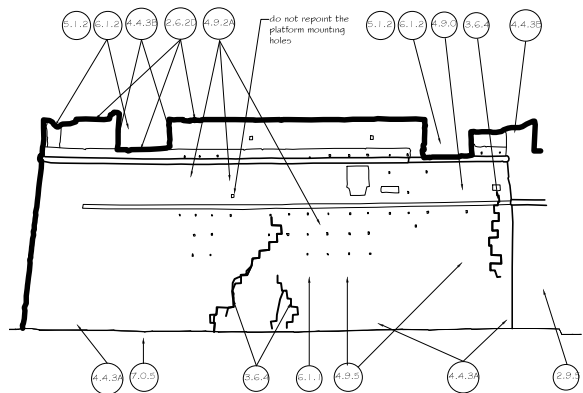


1 TOWER – EAST ELEVATION
with orthophoto
SCALE 1/150

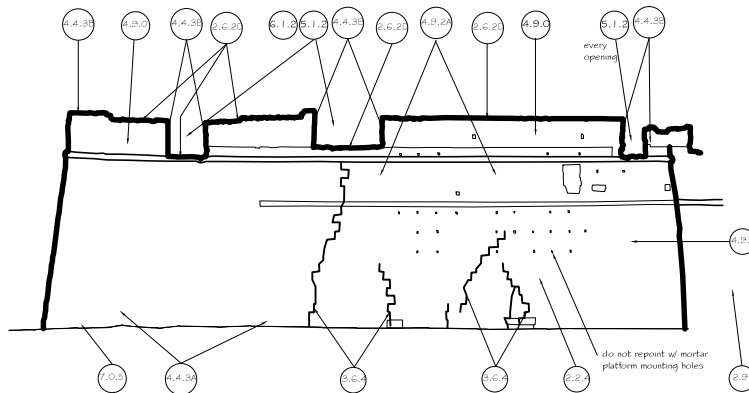


2 TOWER – SOUTHEAST ELEVATION
with orthophoto
SCALE 1/150

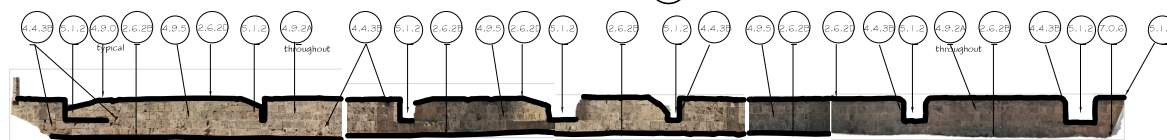
FOR WALL REPAIRS 4.4.3A, 4.4.3B, 4.9.2E etc.
REFER TO THE PHOTO ANNEX SPECIFICATIONS



1a TOWER – EAST ELEVATION
SCALE 1/150



2a TOWER – SOUTHEAST ELEVATION
SCALE 1/150



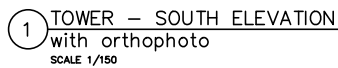
3 TOWER – INNER PARAPET
SCALE 1/150



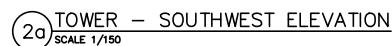
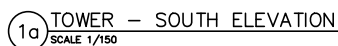
SYMBOLS LEGEND	
Symbol	Description
	Reference to a detail drawing Upper N°: Number of detail Lower N°: Number of sheet
	Reference to a photo First N°: Number of photo Second N°: Number of sheet
	Keystone. Intervention that corresponds to Specifications and Bill of Quantities
	Height above datum
KEYNOTES - INTERVENTION CODES	
01 GENERAL	
1.1.0 Summary of work, scope & limits	
1.1.4 Access to the site	
1.5.0 Temporary facilities, controls, utilities - staging	
1.5.5 Vehicular access and parking	
1.5.6 Temporary work barriers to protect the trees, ponds	
1.5.8 Project identification	
02 SITE CONDITIONS	
2.2.0 Site inspection	
2.2.2A Cutting and removal of concrete or asphalt pavement attached to wall	
2.2.2B Removal of concrete skylights	
2.2.2C Concrete structure over Museum roof	
2.2.2D Removal of site debris	
2.2.2E Concrete tank on top of Cavalier's walls	
2.2.3 Graffiti removal	
2.2.4 Metal fixtures, embedded items, flagpoles, tubes etc. to be removed	
2.2.5 Grade adjustment for drainage	
2.3.1 Excavation, filling and backfilling for drainage	
2.6.2 Site drainage with perforated pipe	
2.6.2B Surface drainage with cast in place lime concrete	
2.6.2C Drainage of top of walls, earth surfaces	
2.6.2D Drainage of top of walls, parapets, embrasures- covered surfaces	
2.6.2 Installation of safety fence	
2.9.0 Site plants, growth of vegetation removal	
2.9.5 Site encroachment	
03 CRACKS	
3.6.4 Injection grouting large cracks	
04 MASONRY	
4.4.3A Installation of new ashlar stone at base of walls	
4.4.3B Installation of new ashlar stone at embrasures, walls and parapets	
4.9.0 Flint removal from masonry walls	
4.9.2A Mortar pointing	
4.9.2B Structural consolidation- collapsed retaining wall at northeast gun platform	
4.9.2C Structural consolidation- deformed cavalier wall	
4.9.2D Structural consolidation- collapsed parapet southern curtain wall	
4.9.2E Structural consolidation of south curtain wall	
4.9.5 Stone cleaning- general	
4.9.6 Repair of stone butt platforms & floors	
05 METALS	
5.1.1 Safety fence	
5.1.2 Safety bars	
5.1.3 Safety handrails	
06 WOOD	
6.1.1 Wooden blocks	
6.1.2 Wooden safety bars	
07 DRAINAGE	
7.0.5 Drainage system at the bottom of the monument	
7.0.6 Drainage system's scuppers and drain pipes	
08 DOORS & WINDOWS	
8.6.3 Skylights installation	
16 ELECTRICAL	
16.4.0 Electrical cables on masonry	
16.5.3 Emergency lighting	


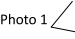
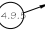
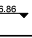


	United Nations Development Program	
Program funded by EUROPEAN UNION		

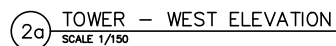
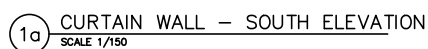
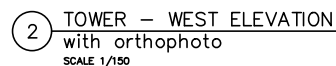
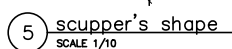
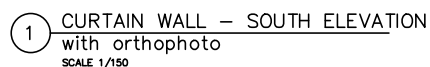
Project Designed By: MICHAEL PITTAS, SELEN AVKAN YENIADA, RAND EPPICH ANASTASIA PITTA, KALYPSO FOTIOU, MUGE SEVKETOGLU, ARISTODEMOS ANASTASIADIS, BYRON CHRISTOU			
Project Name: PS-04-2017-97952 (code: C17948) PROJECT DESIGNS FOR CONSERVATION INTERVENTION OF Arsenal Bastion Famagusta, Cyprus Conservation and Structural			
Date	December 20, 2017	Scale	In drawing
Drawing name: ELEVATIONS 3/6 TOWER'S EAST & SOUTHEAST INTERVENTIONS		Drawing no.: C08	



FOR WALL REPAIRS 4.4.3A, 4.4.3B, 4.9.2E etc.
REFER TO THE PHOTO ANNEX SPECIFICATIONS



SYMBOLS LEGEND			
Symbol	Description		
	Reference to a detail drawing Upper NP: Number of detail Lower NP: Number of sheet		
	Reference to a photo First NP: Number of photo Second NP: Number of sheet		
	Keynote. Intervention that corresponds to Specifications and Bill of Quantities		
	Height above datum		
KEYNOTES - INTERVENTION CODES			
01 GENERAL			
1.1.0 Summary of work, scope 4 limits			
1.1.4 Access to the site			
1.5.0 Temporary facilities, controls, utilities - staging			
1.5.5 Vehicular access and parking			
1.5.6 Temporary work barriers to protect the trees, ramps			
1.5.8 Project identification			
02 SITE CONDITIONS			
2.0.0 Site inspection			
2.2.2A Cutting and removal of concrete or asphalt pavement attached to wall			
2.2.2B Removal of concrete skylights			
2.2.2C Concrete structure over Museum roof			
2.2.2D Removal of site debris			
2.2.2E Concrete tank on top of Cavalier's walls			
2.2.3 Grafts removal			
2.2.4 Metal fixtures, embedded items, flagpoles, tubes etc. to be removed			
2.2.6 Grade adjustment for drainage			
2.2.7 Excavation, filling and paving for drainage			
2.6.2 Site drainage with perforated pipe			
2.6.2B Surface drainage with cast in place time concrete			
2.6.2C Drainage of top of walls- earth surfaces			
2.6.2D Drainage of top of walls, parapets, embrasures- covered surfaces			
2.6.2 Installation of safety fence			
2.9.0 Site plants, growth of vegetation removal			
2.9.5 Site environment			
03 CRACKS			
3.6.4 Injection grouting large cracks			
04 MASONRY			
4.4.3A Installation of new ashlar stone at base of walls			
4.4.3B Installation of new ashlar stone at embrasures, walls and parapets			
4.9.0 Part removal from masonry walls			
4.9.2B Mortar pointing			
4.9.2B Structural consolidation- collapsed retaining wall at northeast gun platform			
4.9.2.C Structural consolidation- deformed cavalier wall			
4.9.2.D Structural consolidation- collapsed parapet southern curtain wall			
4.9.2.E Structural consolidation of south curtain wall			
4.9.5 Stone draining- general			
4.9.6 Repair of stone built platforms 4 floors			
05 METALS			
5.1.1 Safety fence			
5.1.2 Safety bars			
5.1.3 Safety handrails			
06 WOOD			
6.1.1 Wooden blocks			
6.1.2 Wooden safety bars			
07 DRAINAGE			
7.0.5 Drainage system at the bottom of the monument			
7.0.6 Drainage system's gutters and drain pipes			
08 DOORS & WINDOWS			
8.6.3 Skylights installation			
16 ELECTRICAL			
16.4.0 Electrical cables on masonry			
16.5.3 Emergency lighting			
 			
<p>United Nations Development Program</p> <p>Program funded by EUROPEAN UNION</p>			
<p>Project Designed By: MICHAEL PITTAS, SELEN AVKAN YENIADA, RAND EPPICH ANASTASIA PITTA, KALYPSO FOTIOTI, MUGE SEVKETGOLLOU, ARISTODEMOS ANASTASIADIS, BYRON CHRISTOU</p>			
<p>Project Name: PS-04-2017-97952 (code: C17948) PROJECT DESIGNS FOR CONSERVATION INTERVENTION OF Arsenal Bastion Famagusta, Cyprus Conservation and Structural</p>			
Date	December 20, 2017	Scale	In drawing
<p>Drawing name: ELEVATIONS 4/6 TOWER'S SOUTH & SOUTHWEST INTERVENTIONS</p>			<p>Drawing no.: C09</p>

KEYNOTES - INTERVENTION CODES

- 01 GENERAL
 - 1.1.0 Summary of work, scope & limits
 - 1.1.4 Access to the site
 - 1.5.0 Temporary facilities, controls, utilities - staging
 - 1.5.5 Vehicular access & parking
 - 1.5.6 Temporary work barriers to protect the trees, topology
 - 1.5.8 Project identification
- 02 SITE CONDITIONS
 - 2.0.2 Site inspection
 - 2.2.4 Cutting and removal of concrete or asphalt pavement attached to walls
 - 2.2.8 Removal of concrete slabs
 - 2.2.0 Concrete structure over Masonry roof
 - 2.2.0 Removal of site debris
 - 2.2.2 Concrete tank top on top of Cavalier's walls
 - 2.2.3 Gravel removal
 - 2.2.4 Metal fixtures, embedded items, flagpoles, tubes etc. to be removed
 - 2.5.6 Grade adjustment for drainage
 - 2.3.1 Excavation, filling and backfilling for drainage
 - 2.6.2 Site Surface with perforated pipe
 - 2.6.2 Site Surface drainage adjacent to place line concrete
 - 2.6.2 Drainage of top of walls- earth surfaces
 - 2.6.2 Drainage of top of walls, parapets, embankments- covered surfaces
 - 2.6.2 Installation of safety fence
 - 2.9.0.0 Site plants, growth of vegetation removal
 - 2.9.5 Site encroachment

03 CRACKS

- 3.6.4 Injection of grout along large cracks
- #### 04 MASONRY
- 4.4.3A Installation of new ashlar stone at base of walls
 - 4.4.3B Installation of new ashlar stone at embrasures, walls and parapets
 - 4.9.0A Plaster removal from masonry walls
 - 4.9.2A Mortar pointing
 - 4.9.2B Structural consolidation- collapsed retaining wall at northeast gun platform
 - 4.9.2C Structural consolidation- deformed cavalier wall
 - 4.9.2D Structural consolidation- collapsed parapet southern curtain wall
 - 4.9.2E Structural consolidation of south curtain wall
 - 4.9.5 Stone cleaning- general
 - 4.9.6 Repair of stone built platforms 4 floors

05 METALS

- 5.1.1 Safety fence
5.1.2 Safety bars
5.1.3 Safety handrails
OC WOOD

06 WOOD
C. L. L. Wood (ed.)

- 6.1.2 Wooden safety bars

07 DRAINAGE

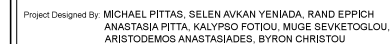
- #### 7.0.5 Drainage system at the bottom of the monument

7.0.6 Drainage system's equipment

- ## 08 DOORS & WINDOWS

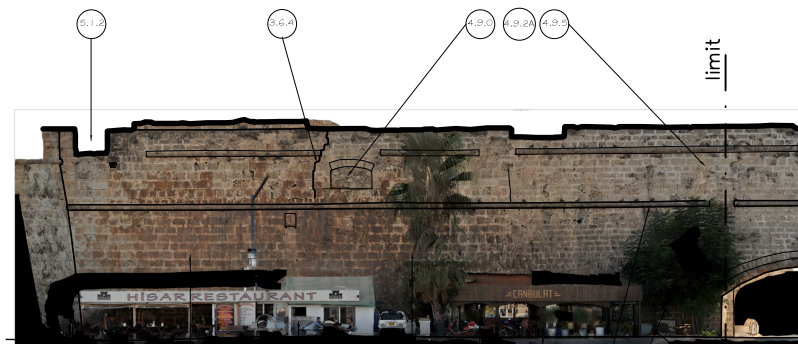
1.6 ELECTRICAL

- 16,4,0 Electrical cables on masonry

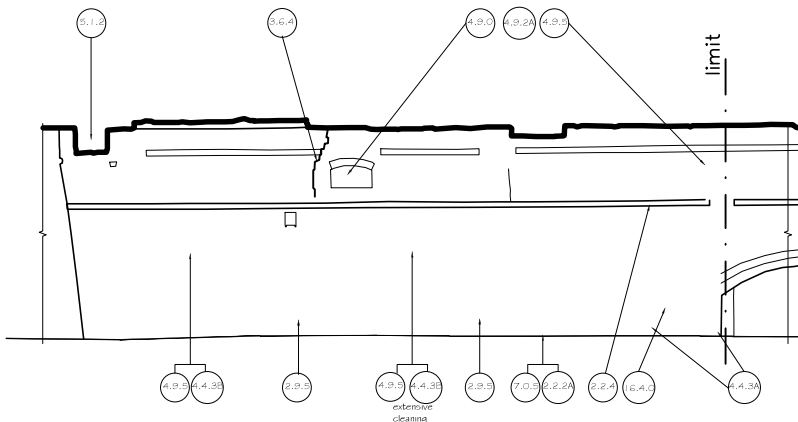


Project Name: PS-04-2017-07952 (code: C17948)
PROJECT DESIGNS FOR CONSERVATION INTERVENTION OF
Arsenal Bastion
Famagusta, Cyprus *Conservation and Structural*

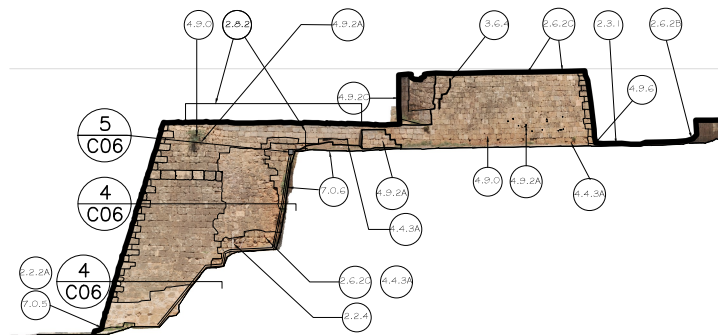
Drawing name:	ELEVATIONS 5/6 SOUTH CURTAIN WALL & TOWER WEST – INTERVENTIONS	Drawing no.:	C10
---------------	--	--------------	-----



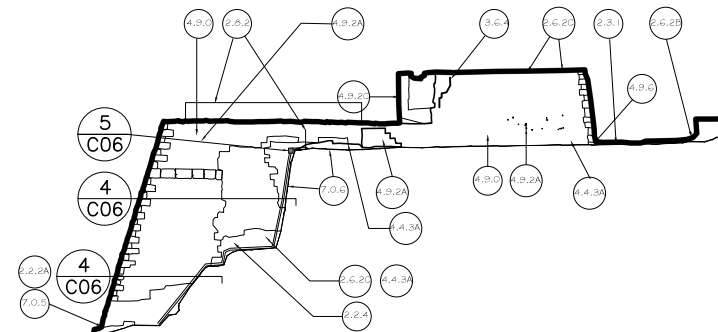
1 CAVALIER & MUSEUM – EAST
with orthophoto
SCALE 1/150



1a CAVALIER & MUSEUM – EAST
SCALE 1/150



2 CAVALIER – WEST
with orthophoto
SCALE 1/150



2a CAVALIER – WEST
SCALE 1/150

FOR WALL REPAIRS 4.4.3A, 4.4.3B, 4.9.2E etc.
REFER TO THE PHOTO ANNEX SPECIFICATIONS



SYMBOLS LEGEND

Symbol	Description
	Reference to a detail drawing Upper N°: Number of detail Lower N°: Number of sheet
	Reference to a photo First N°: Number of photo Second N°: Number of sheet
	Keynote. Intervention that corresponds to Specifications and Bill of Quantities
	Height above datum

KEYNOTES - INTERVENTION CODES

01 GENERAL

- 1.1.2 Summary of work, scope & limits
- 1.1.4 Access to the site
- 1.5.0 Temporary facilities, controls, utilities - staging
- 1.5.5 Vehicular access and parking
- 1.5.6 Temporary work barriers to protect the trees, ponds
- 1.5.8 Project identification

02 SITE CONDITIONS

- 2.2.0 Site inspection
- 2.2.2A Cutting and removal of concrete or asphalt pavement attached to wall
- 2.2.2B Removal of concrete skylights
- 2.2.2C Concrete structure over Museum roof
- 2.2.2D Removal of site debris
- 2.2.2E Concrete tank on top of Cavalier's walls
- 2.2.3 Graffiti removal
- 2.2.4 Metal fixtures, embedded items, flagpoles, tubes etc. to be removed
- 2.2.6 Grade adjustment for drainage
- 2.3.1 Excavation, filling and backfilling for drainage
- 2.6.2 Size drainage with perforated pipe
- 2.6.2B Surface drainage with cast in place lime concrete
- 2.6.2C Drainage of top of walls, parapets, earth surfaces
- 2.6.2D Drainage of top of walls, parapets, embasements - covered surfaces
- 2.6.2 Installation of safety fence
- 2.9.0 Site plants, growth of vegetation removal
- 2.9.5 Site encroachment

03 CRACKS

- 3.6.4 Injection grouting large cracks

04 MASONRY

- 4.4.3A Installation of new ashlar stone at base of walls
- 4.4.3B Installation of new ashlar stone at embasements, walls and parapets
- 4.9.0 Part removal from masonry walls
- 4.9.2A Mortar pointing
- 4.9.2B Structural consolidation- collapsed retaining wall at northeast gun platform
- 4.9.2C Structural consolidation- deformed cavalier wall
- 4.9.2D Structural consolidation- collapsed parapet southern curtain wall
- 4.9.2E Structural consolidation of south curtain wall
- 4.9.5 Stone cleaning- general
- 4.9.6 Repair of stone built platforms & floors

05 METALS

- 5.1.1 Safety fence
- 5.1.2 Safety bars
- 5.1.3 Safety handrails

06 WOOD

- 6.1.1 Wooden blocks
- 6.1.2 Wooden safety bars

07 DRAINAGE

- 7.0.5 Drainage system at the bottom of the monument
- 7.0.6 Drainage system's scuppers and drain pipes

08 DOORS & WINDOWS

- 8.6.3 Skylights installation

16 ELECTRICAL

- 16.4.0 Electrical cables on masonry
- 16.5.3 Emergency lighting



Project Designed By: MICHAEL PITTAS, SELEN AVKAN YENIADA, RAND EPPICH
ANASTASIA PITTA, KALYPSO FOTIOU, MUGE SEVKETOGLU,
ARISTODEMOS ANASTASIADIS, BYRON CHRISTOU

Project Name: PS-04-2017-97952 (code: C17948)
PROJECT DESIGNS FOR CONSERVATION INTERVENTION OF
Arsenal Bastion
Famagusta, Cyprus Conservation and Structural

Date: December 20, 2017 Scale: In drawing

Drawing name: ELEVATIONS 6/6
MUSEUM & CAVALIER - EAST & WEST
INTERVENTIONS
Drawing no.: C11

