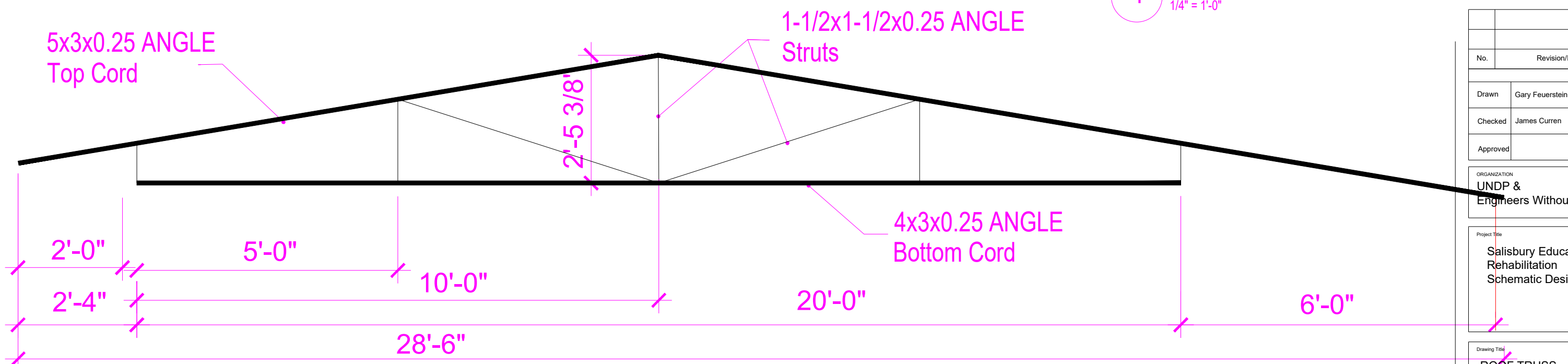


1 ROOF TRUSS ELEVATION
1/4" = 1'-0"



2 ROOF TRUSS JOINT DIMENSIONS
1/4" = 1'-0"

- General Notes
1. All dimensions are in feet and inches unless otherwise stated.
 2. Do not use this drawing to build or construct.
 3. The layout developed here is merely illustrative.

No.	Revision/Issue	Date

Drawn	Gary Feuerstein	29 Oct 2018
Checked	James Curren	29 Oct 2018
Approved		

ORGANIZATION
UNDP &
Engineers Without Borders

Project Title
Salisbury Education Campus
Rehabilitation
Schematic Design

Drawing Title ROOF TRUSS	
Date 29Oct2018	Sheet
Original Paper Size: 11x17"	S2.01