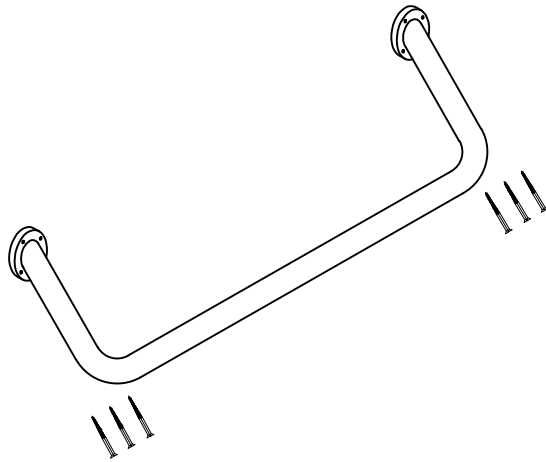
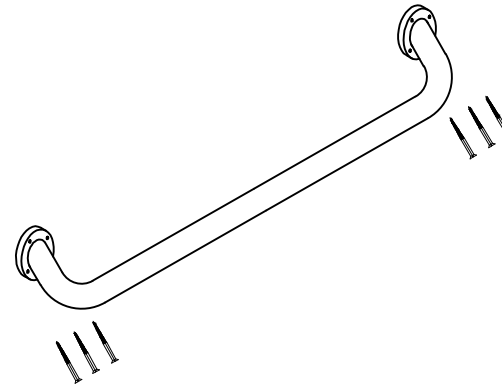


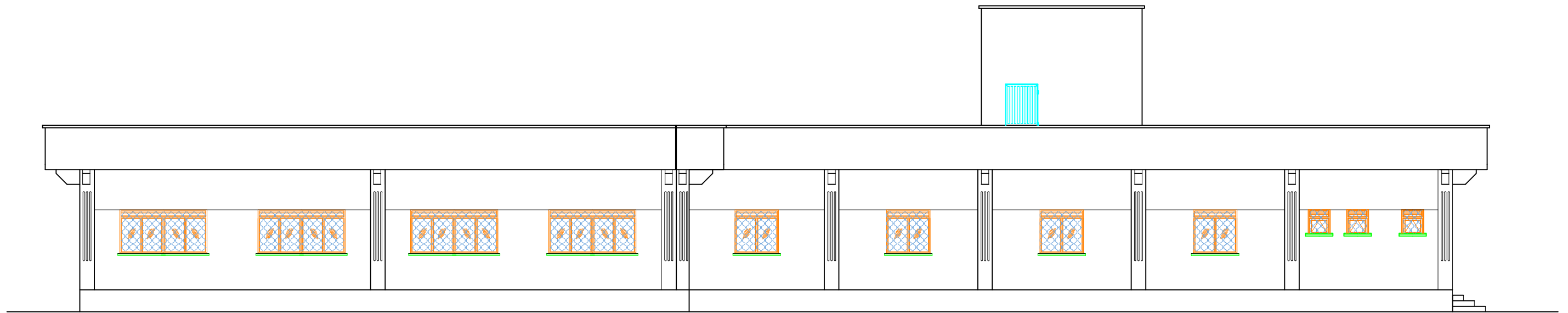
The axonometric elevation of folding grab rail



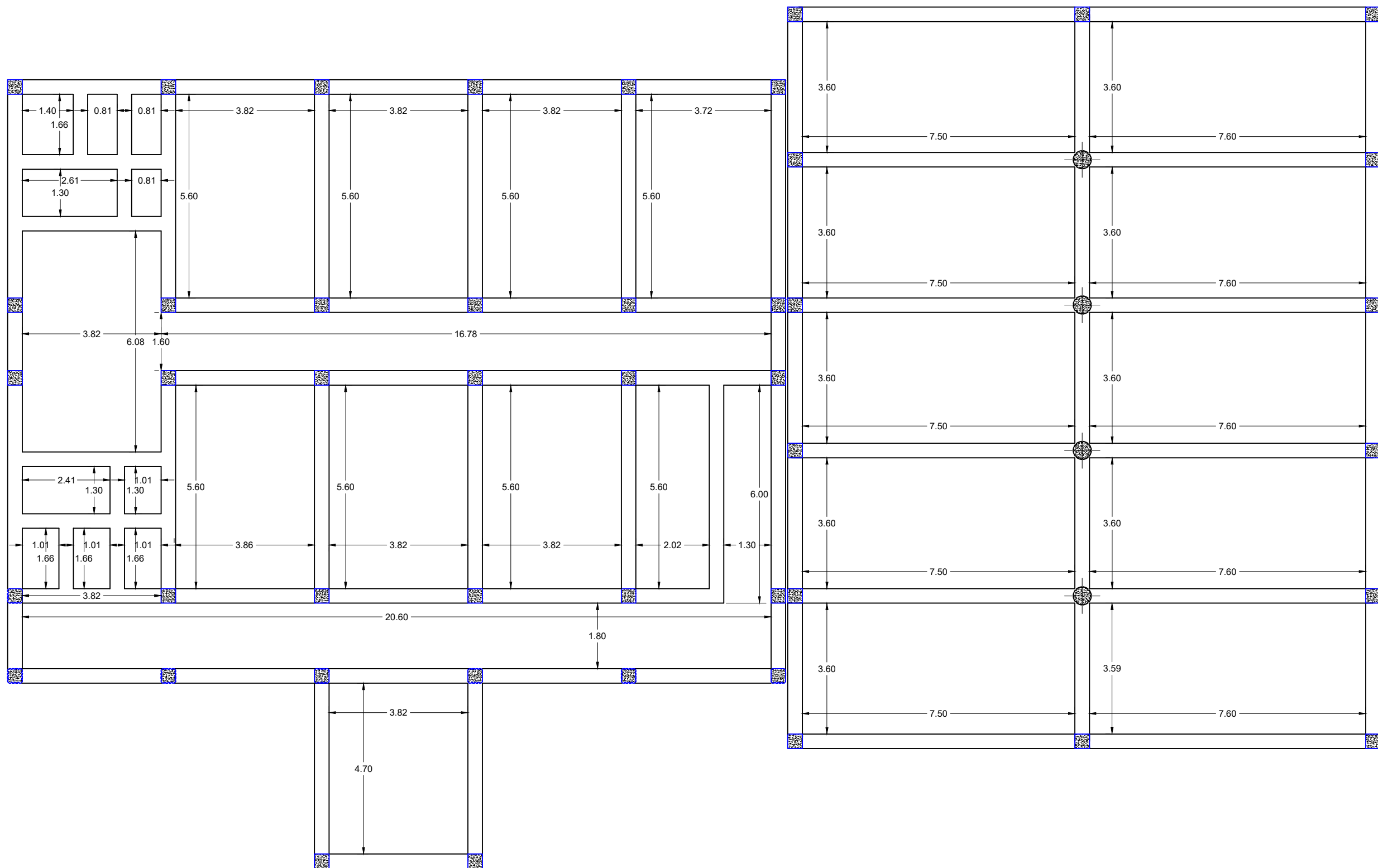
The axonometric elevation of big size
wall grab rail



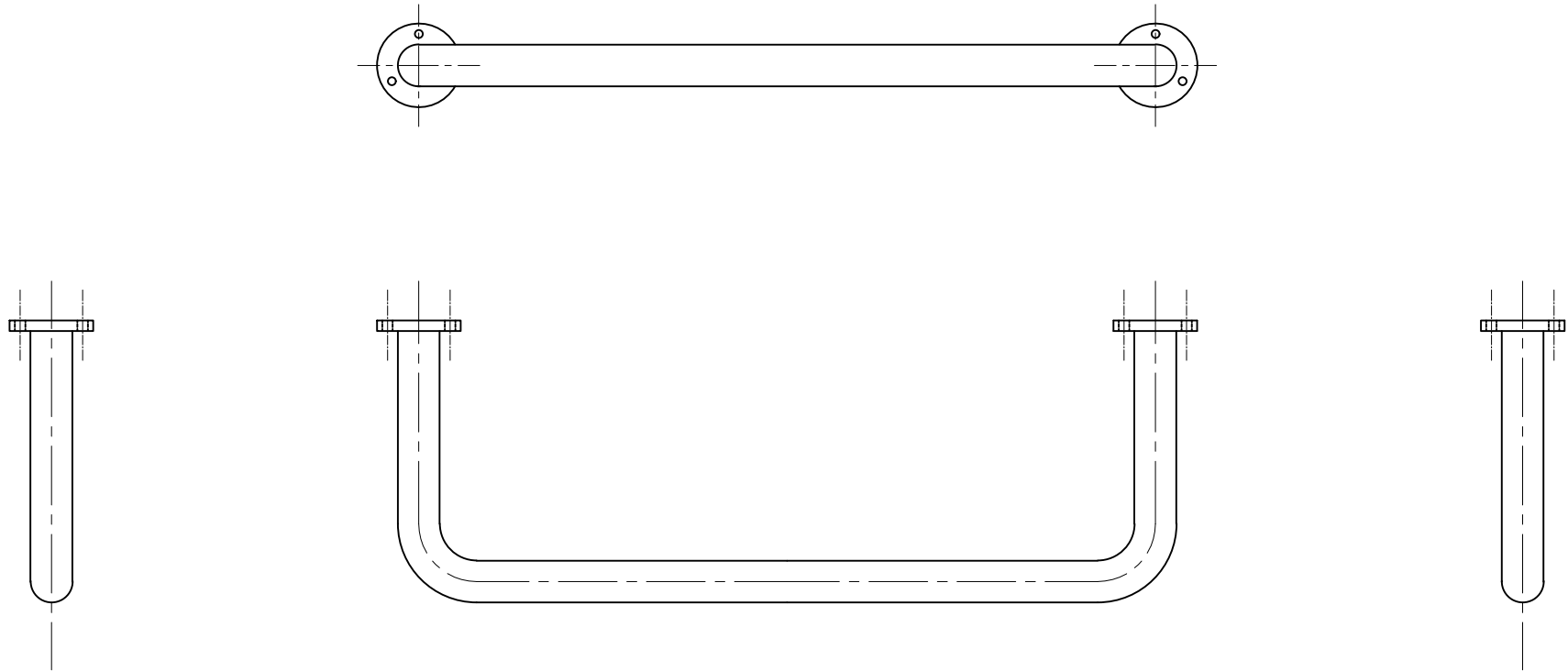
The axonometric elevation of small size
wall and door grab rail



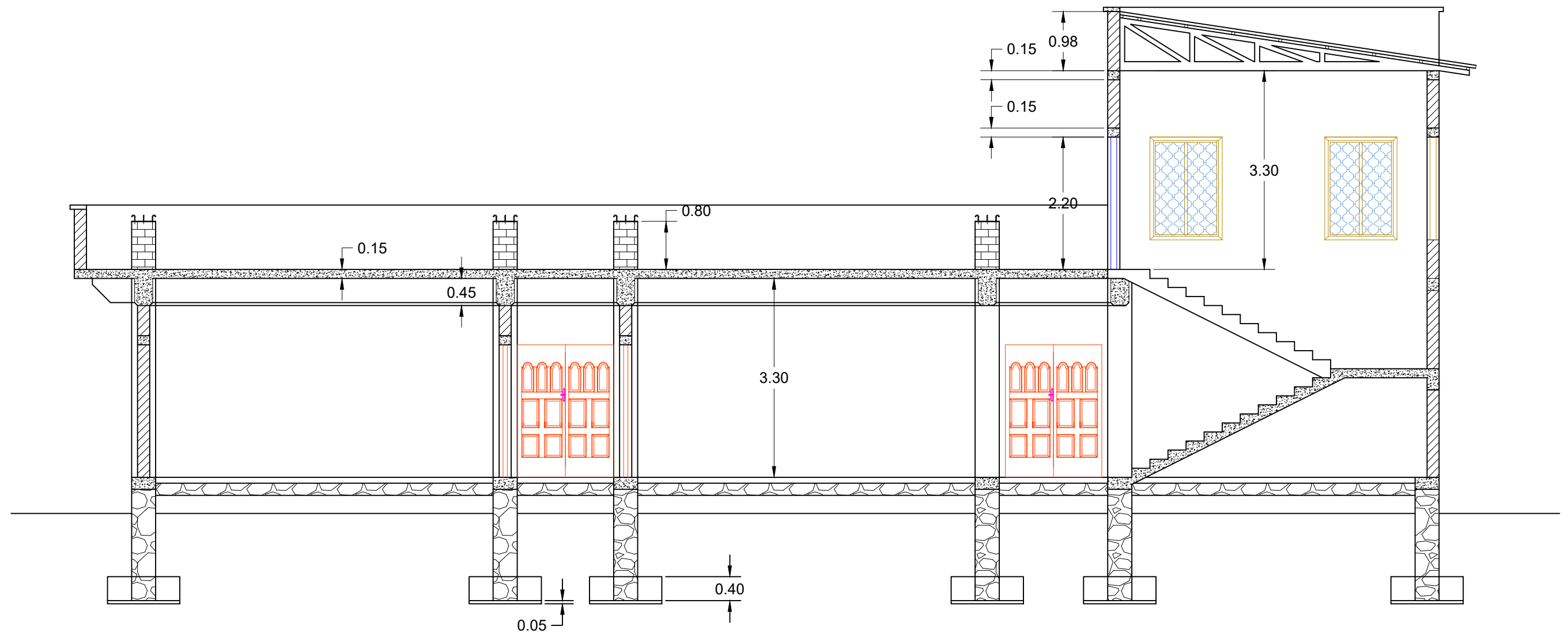
Back side elevation of the new conference room, office spaces, library
and toilets for JSS Parliament in Kismayo



Plan of backfilling materials of pavement of new conference room, office spaces, library and toilets for JSS Parliament in Kismayo



The four side view of big size wall grab rail



Cross section A-A of the new conference room, office spaces, library and toilets for JSS Parliament in Kismayo

There shall be at least two grab rails which shall not be less than 32 mm and not more than 40 mm in external diameter and shall be fixed on the wall leaving a grip space of not less than 30 mm clear of the mounting wall. The two grab rails constructed in one continuous piece is acceptable. The length of grab rail shall not be less than 600 mm.

N.B.

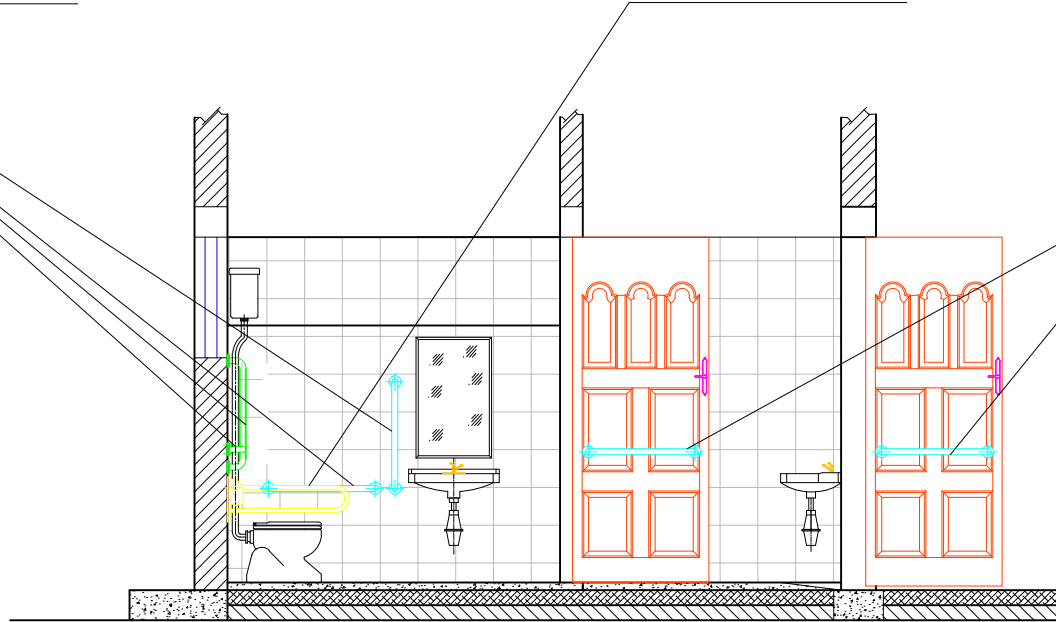
The grab rail shall be capable of carrying a static load of 150 kg.

There shall be one folding grab rail on the wide side of the cubicle adjacent to the water-closet (W.C) at a height between 725mm to 750mm above the finished floor level when lowered from the wall.

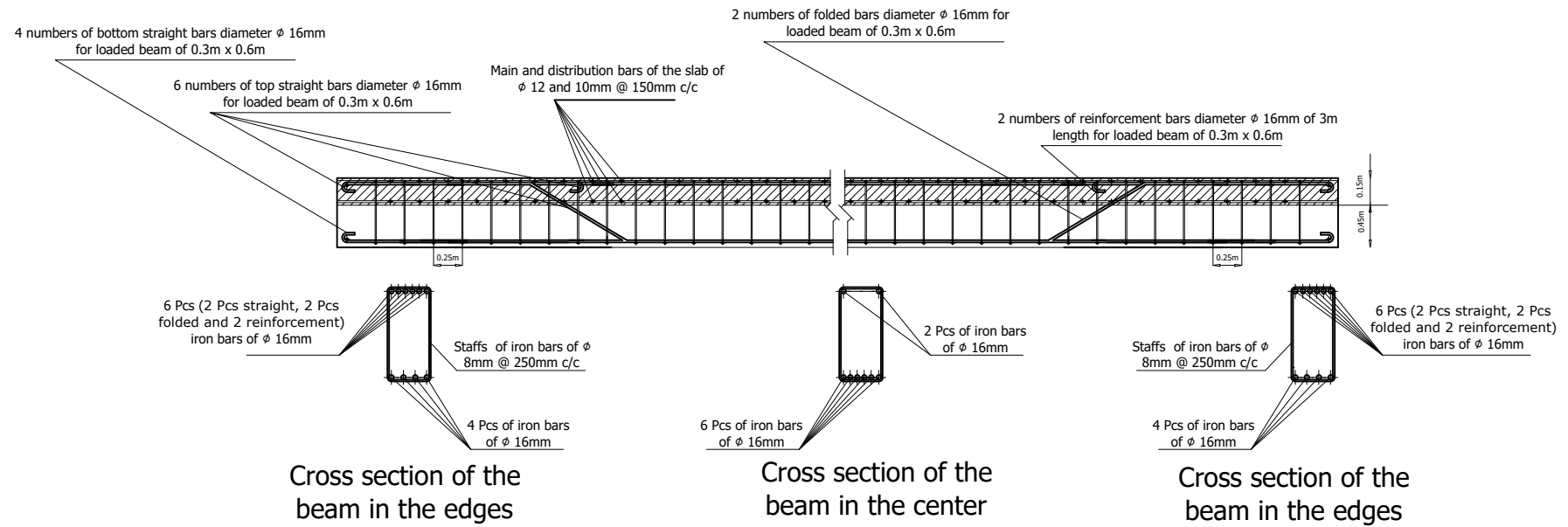
N.B.

The folding grab rail shall be capable of carrying a static load of 150 kg.

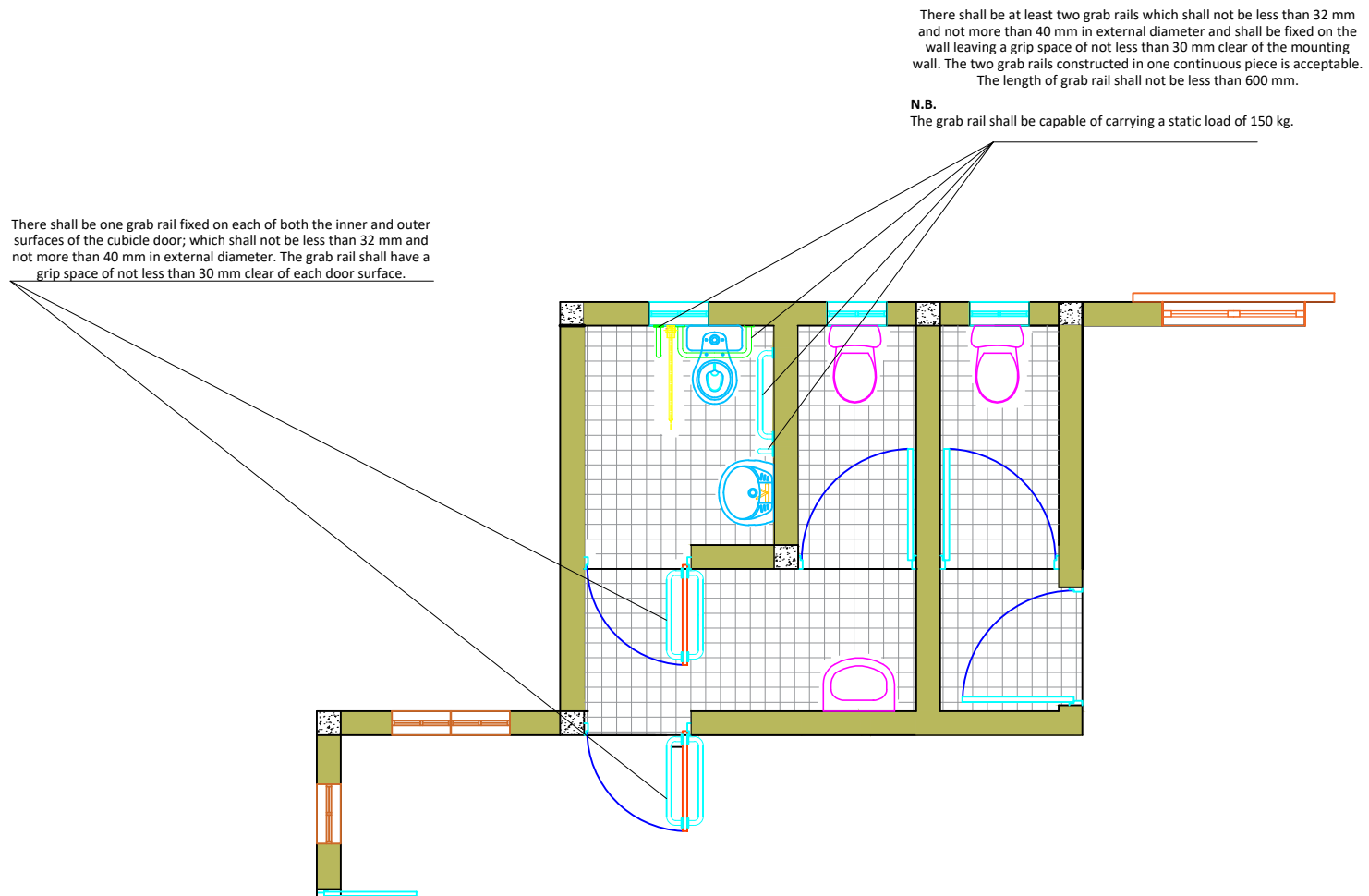
There shall be one grab rail fixed on each of both the inner and outer surfaces of the cubicle door; which shall not be less than 32 mm and not more than 40 mm in external diameter. The grab rail shall have a grip space of not less than 30 mm clear of each door surface.



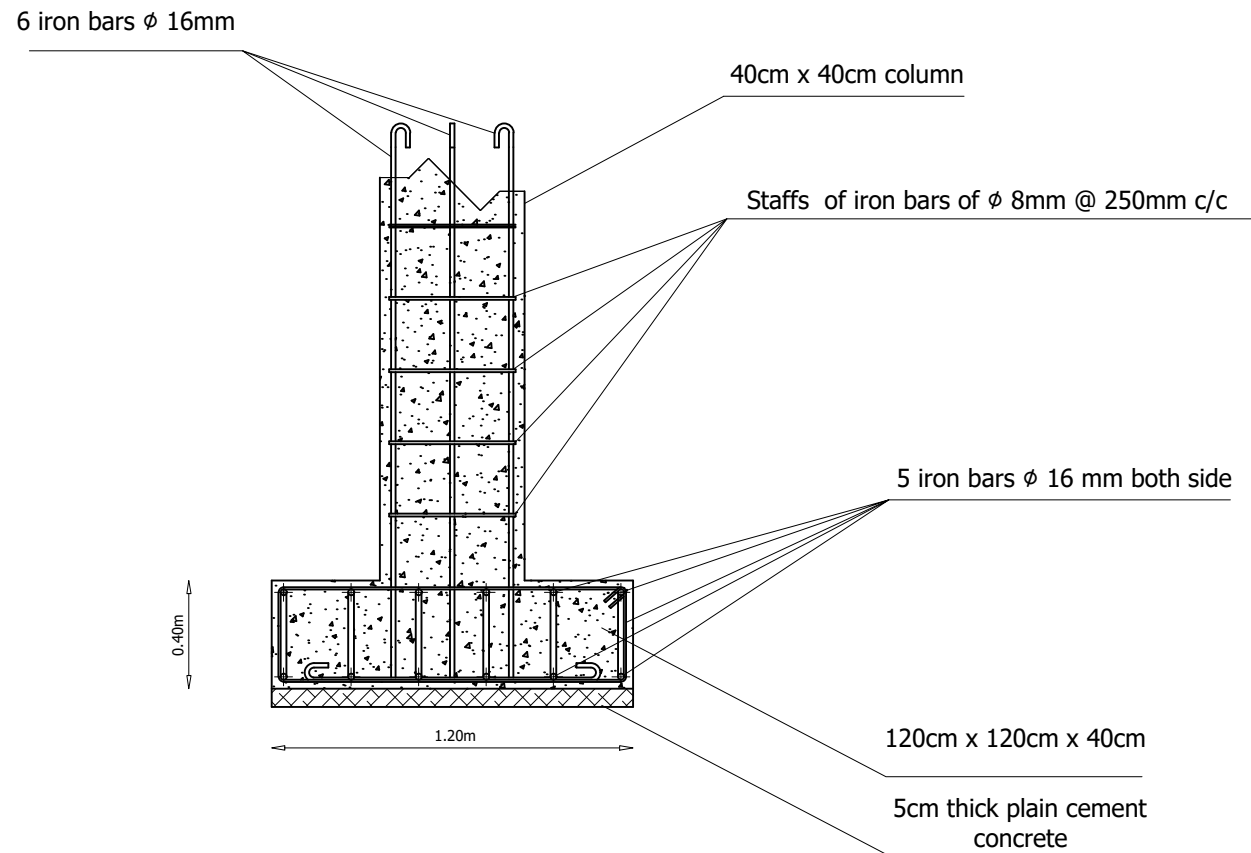
Cross section elevation with details for disable toilet inside of new additional conference hall for Jubbaland Parliament in Kismayo



Detail for reinforced concrete beam of cross section 60cmx30cm

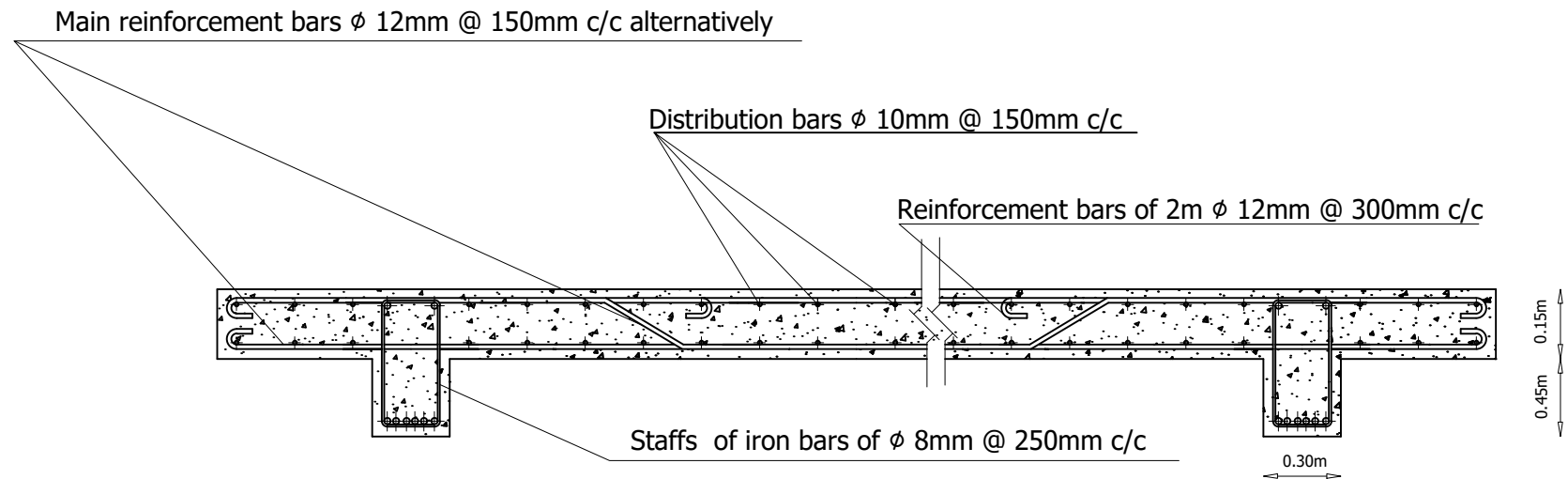


Plan view with details for disable toilet inside of new additional conference hall for Jubbaland Parliament in Kismayo

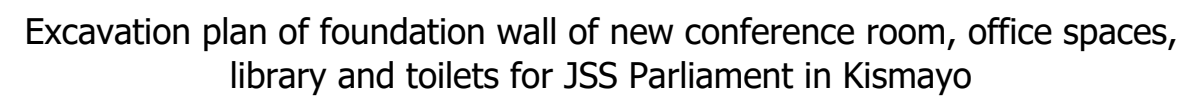


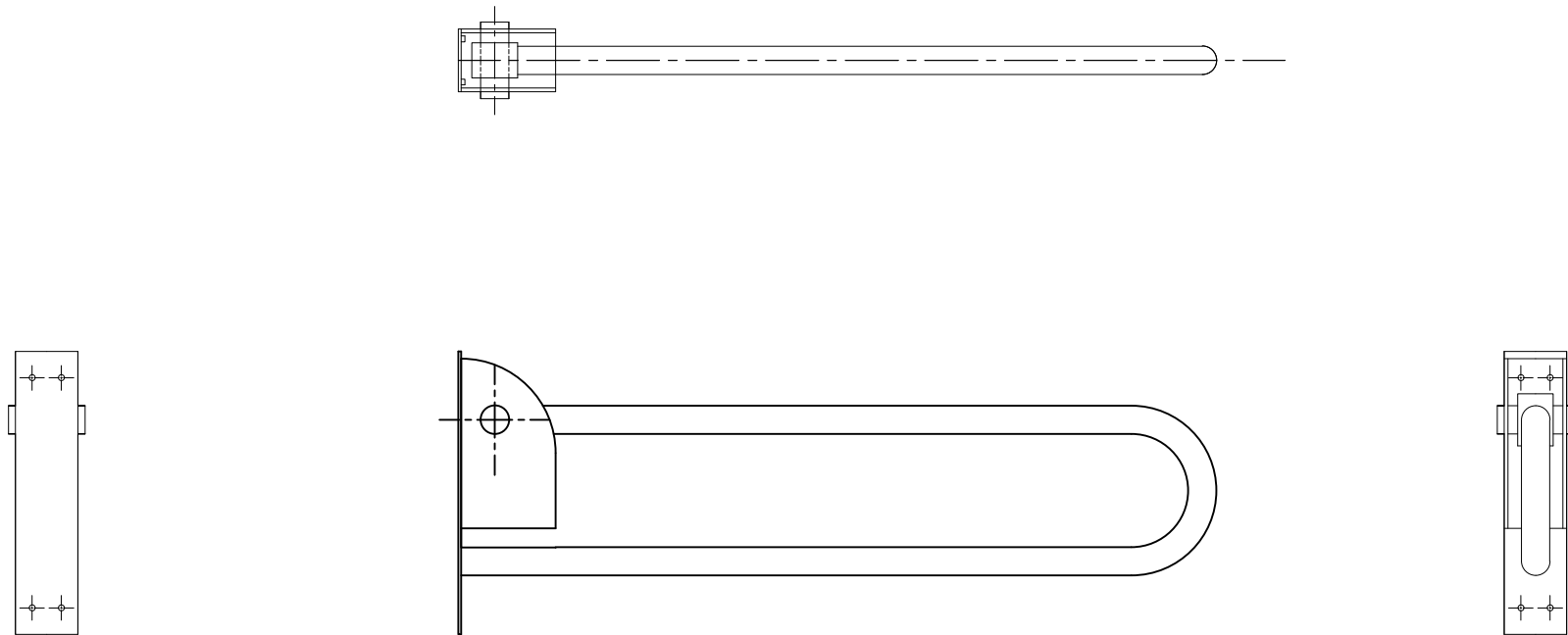
for footing

Detail for reinforced concrete footing for
new concrete buildings

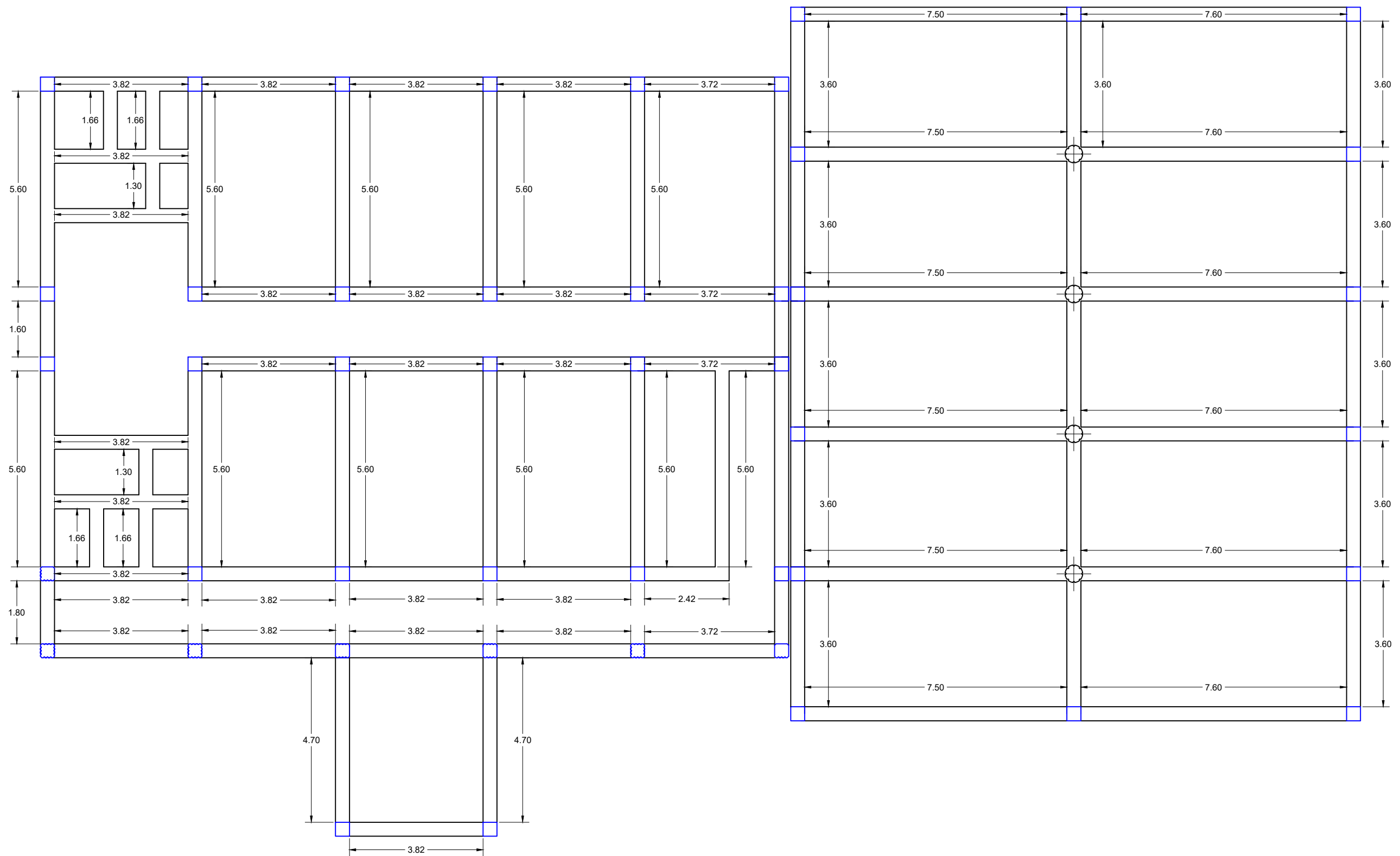


Detail for reinforced concrete roof slab of 15cm thick

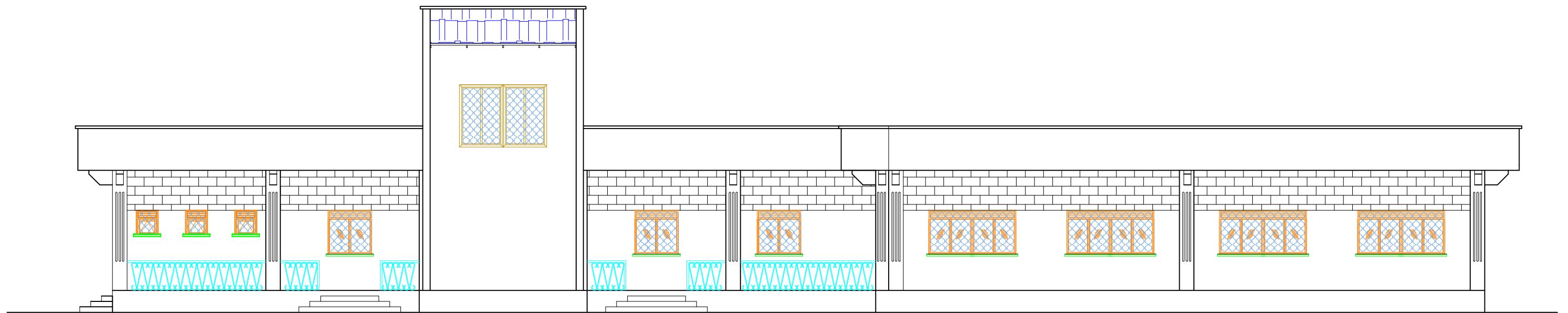




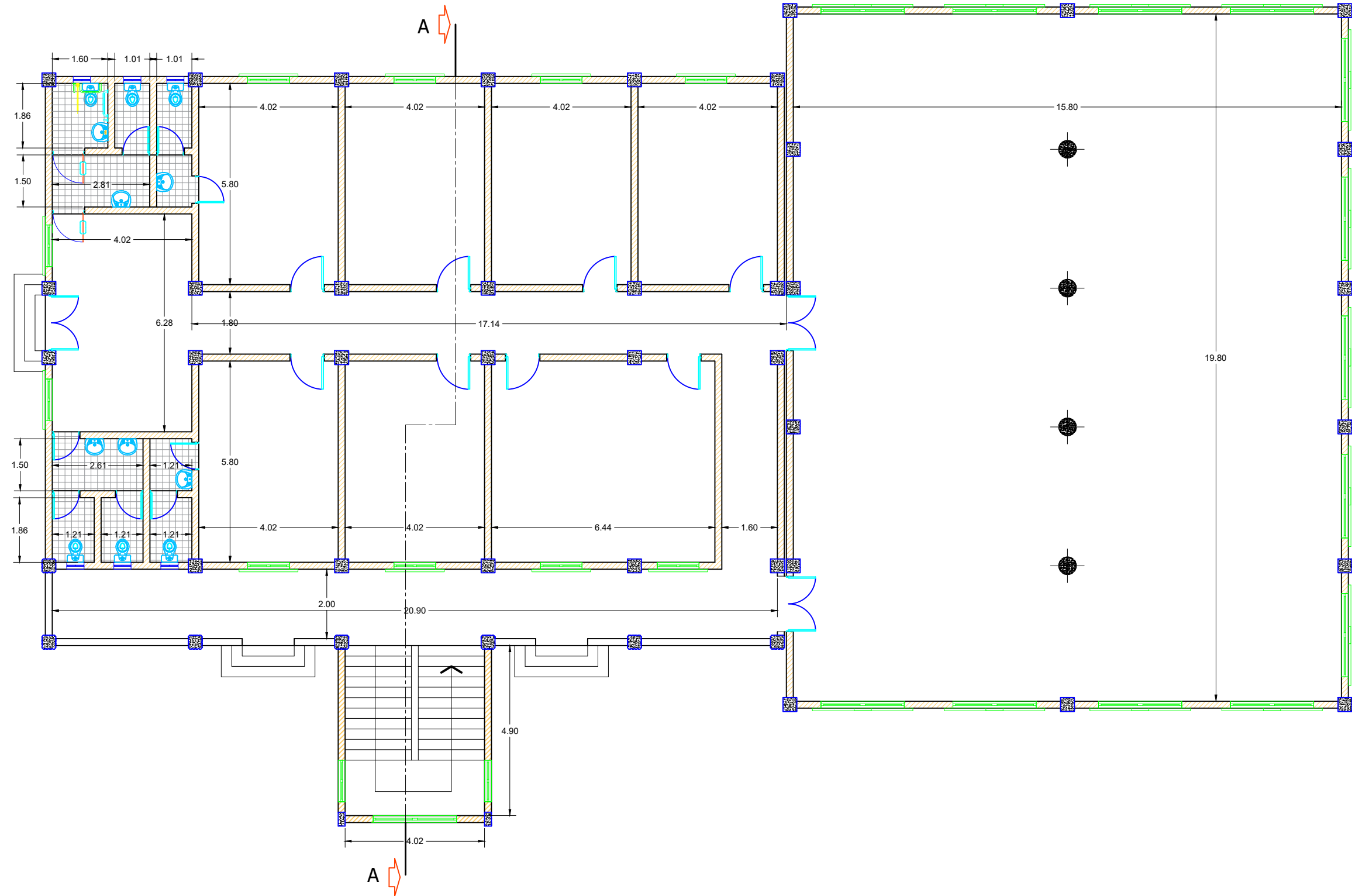
The four side view of folding grab rail



Plan of foundation wall of new conference room, office spaces, library
and toilets for JSS Parliament in Kismayo



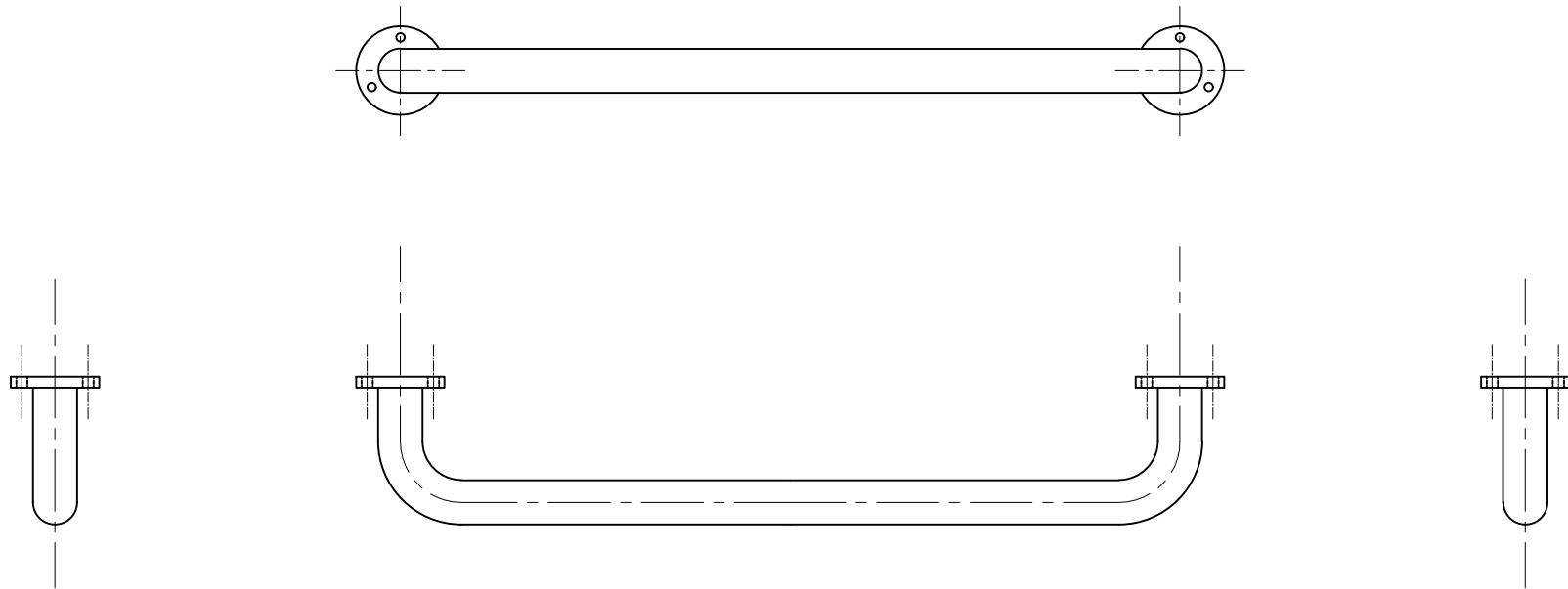
Front elevation of the new conference room, office spaces, library and
toilets for JSS Parliament in Kismayo



Plan of view of new conference room, office spaces, library and toilets
for JSS Parliament in Kismayo



Side elevation of the new conference room, office spaces, library and
toilets for JSS Parliament in Kismayo



The four side view of small size wall and door grab rail