

GENERAL NOTES

DRAINAGE & PLUMBING NOTES:

1. E 'S TO ALL BENDS AND JUNCTION IN DRAINS WITH MARKED COVERS AT GROUND LEVEL.

DRAINS UNDER BUILDINGS TO BE 110mm c.i. ENCASED IN CONCRETE.

INVERT LEVEL AT HEAD OF DRAIN TO BE A MINIMUM 450mm BELOW REDUCED GROUND LEVEL.

ALL WASTE FITTINGS TO HAVE RESEAL TRAPS.

ALL WASTE PIPES TO BE FULLY ACCESSIBLE FOR MAINTENANCE AND REPAIRS.

RAIN WATER DOWNPIPES TO BE MINIMUM 2.45m FROM GULLY.

PROVIDE STORMWATER OUTLETS TO BOUNDARY WALLS ON LOWER COMMON BOUNDARY.

ALL GULLYS TO BE EXPOSED

NO WASTE PIPES TO BE ENCASED IN WALLS OR SLABS UNLESS OTHERWISE SHOWN.

HEAD OF DRAINS TO HAVE A DIA. 100mm C.I.S.V..P

GENERAL SPECIFICATIONS:

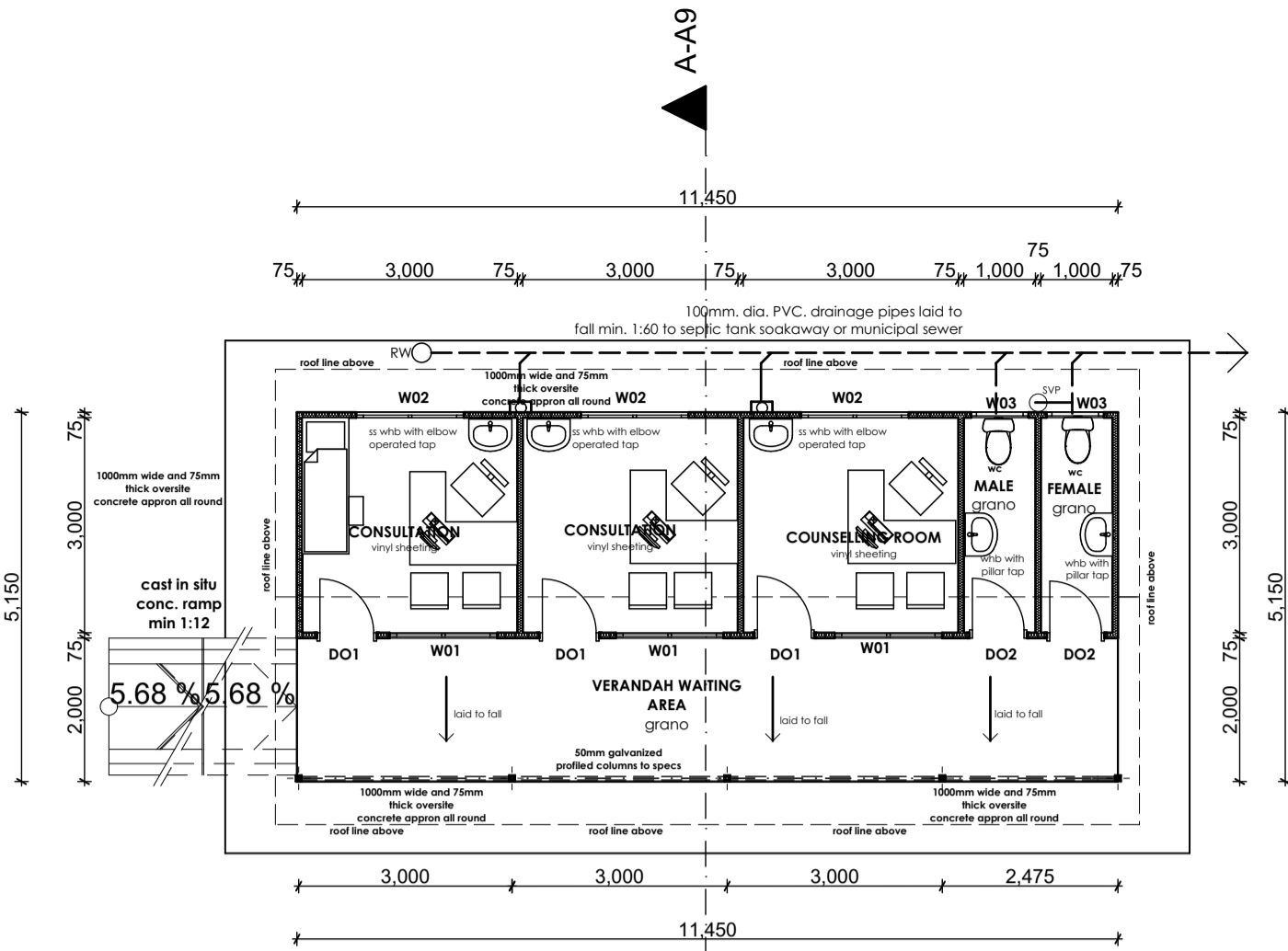
75mm thick polystyrene panel roof with .58mm gauge Chromadek faced to specs

75mm thick polystyrene panel wall with .58mm gauge Chromadek faced to specs

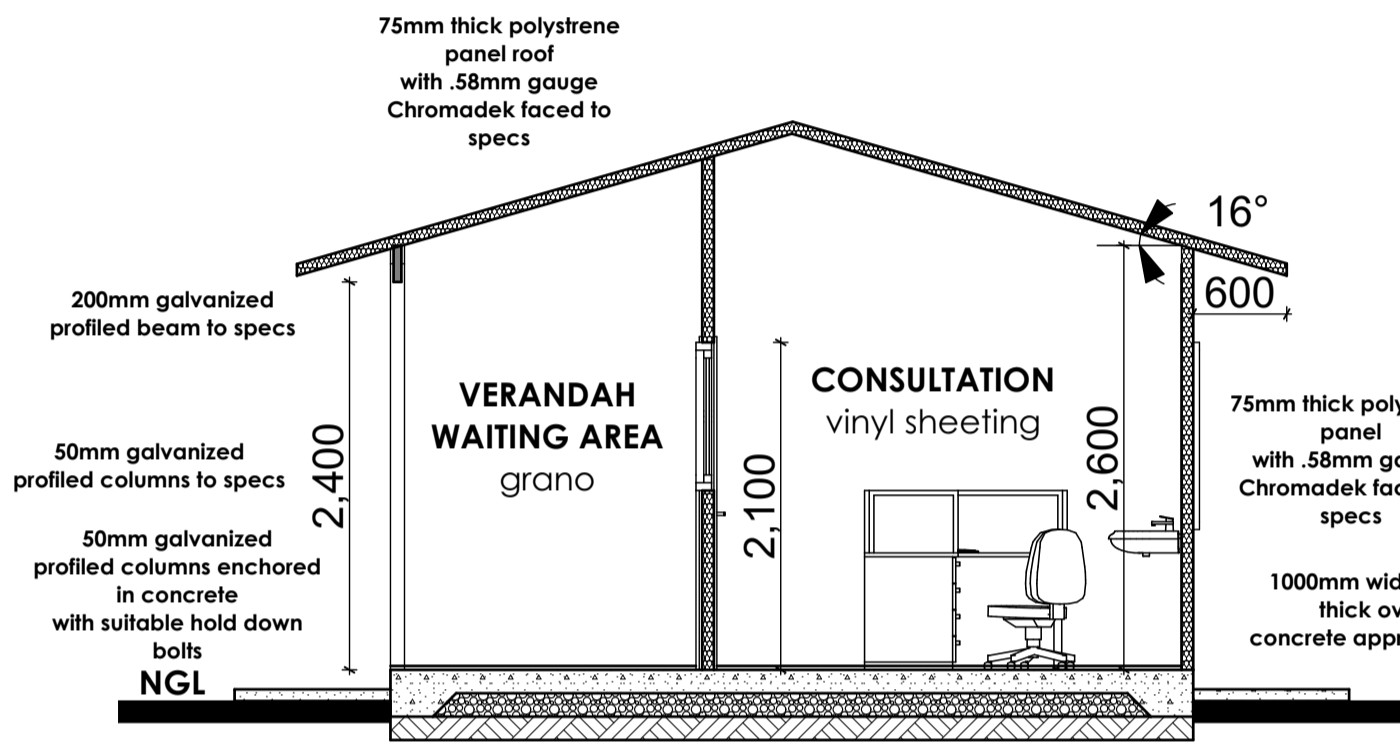
150mm thick reinforced oversite concrete slab over 150mm well compacted hardcore to engineer's specs

50mm galvanized profiled columns encased in concrete with suitable hold down bolts

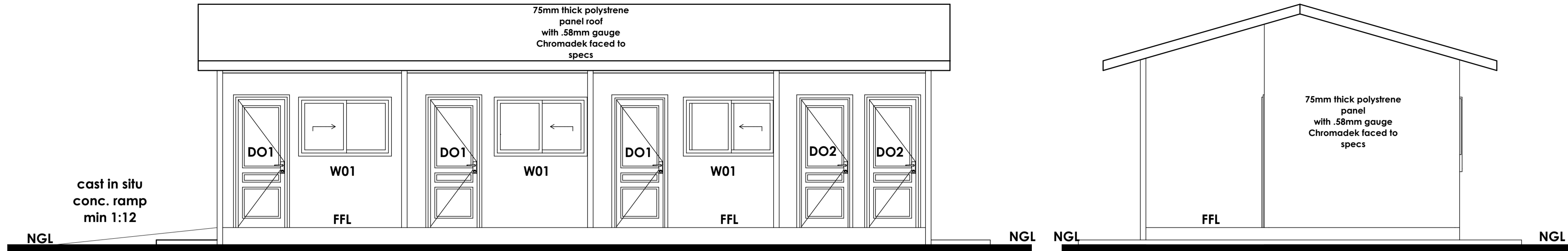
75mm thick polystyrene panel doors with .58mm gauge Chromadek faced to specs



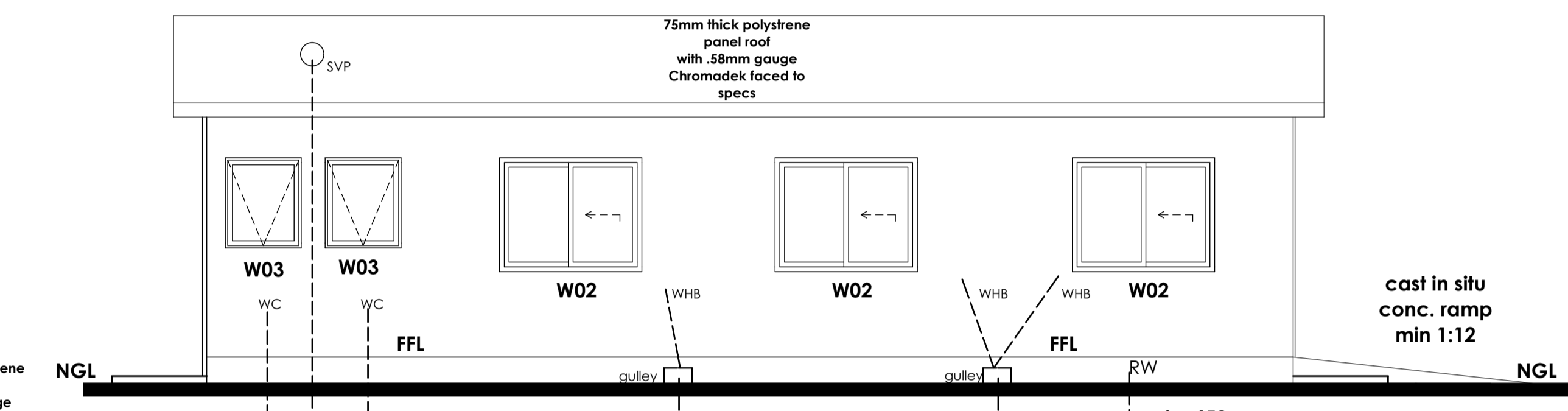
FLOOR PLAN



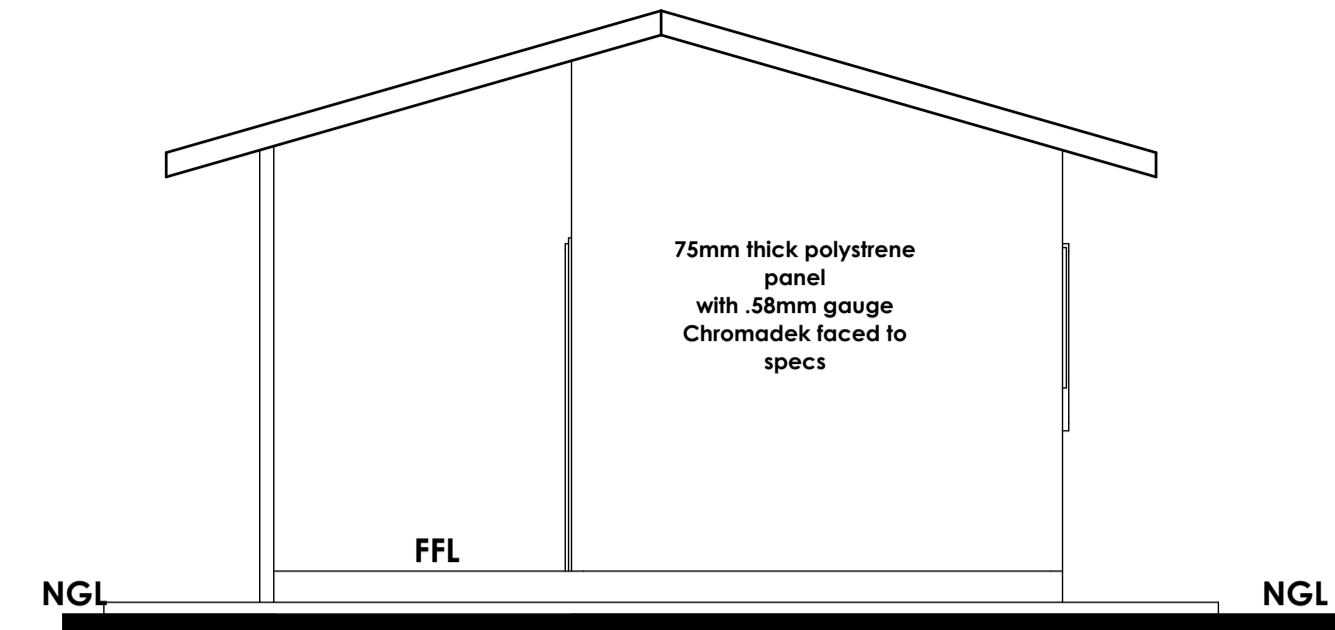
SECTION A-A9



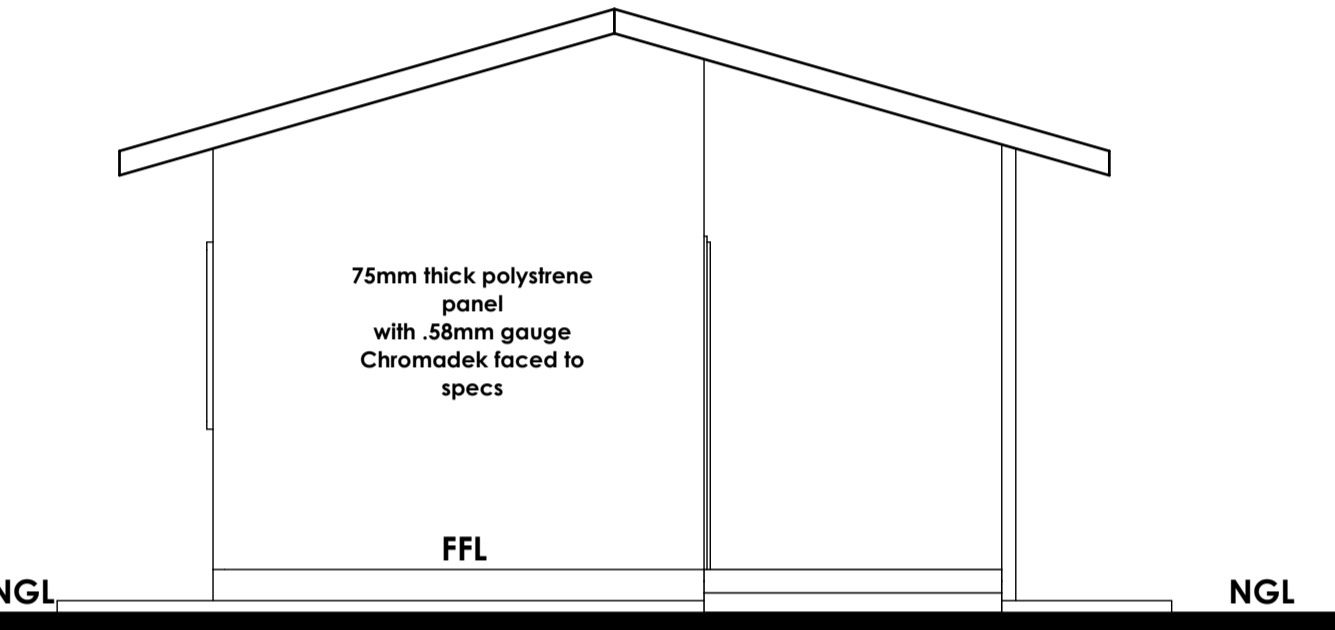
FRONT ELEVATION



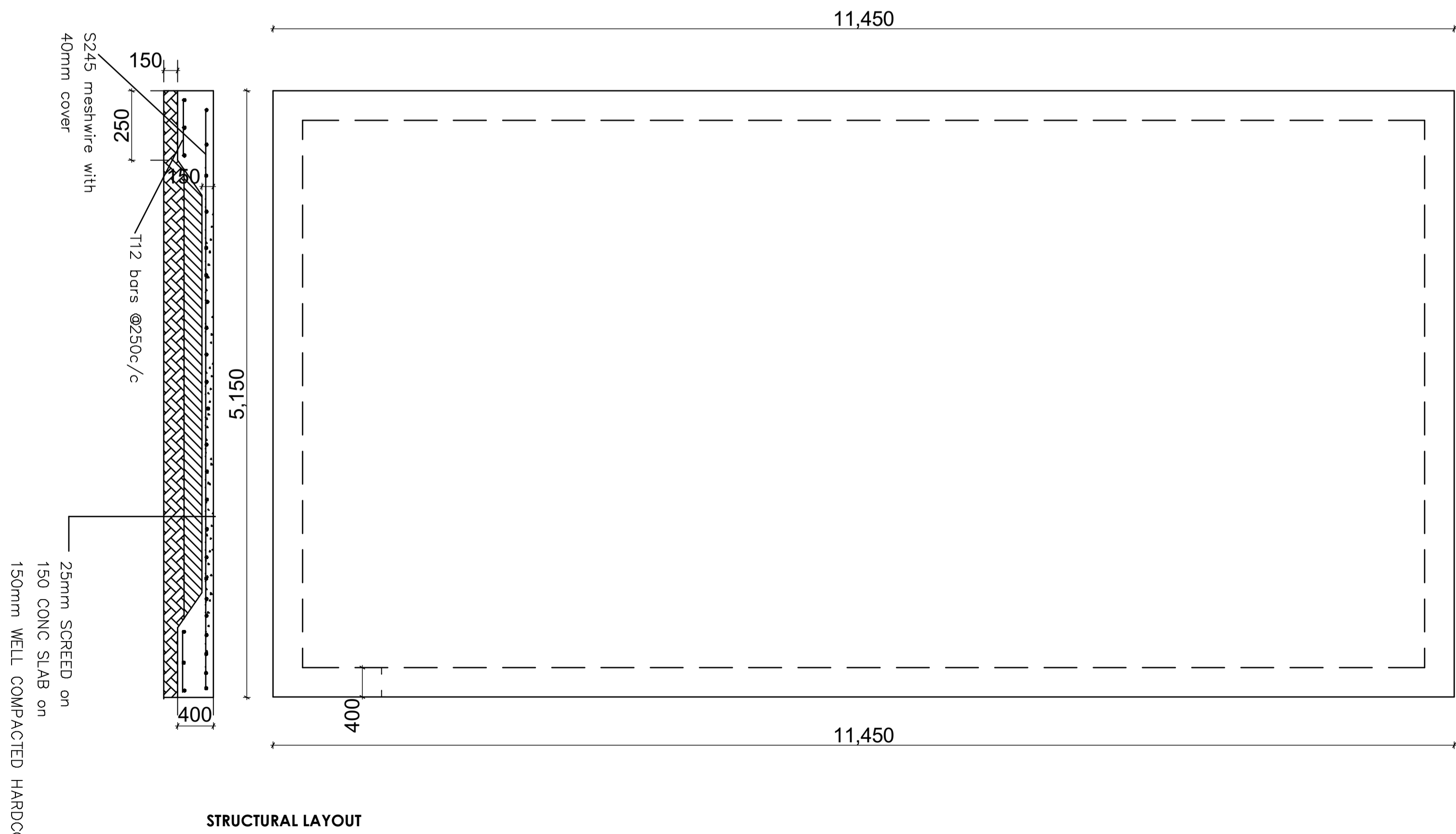
BACK ELEVATION



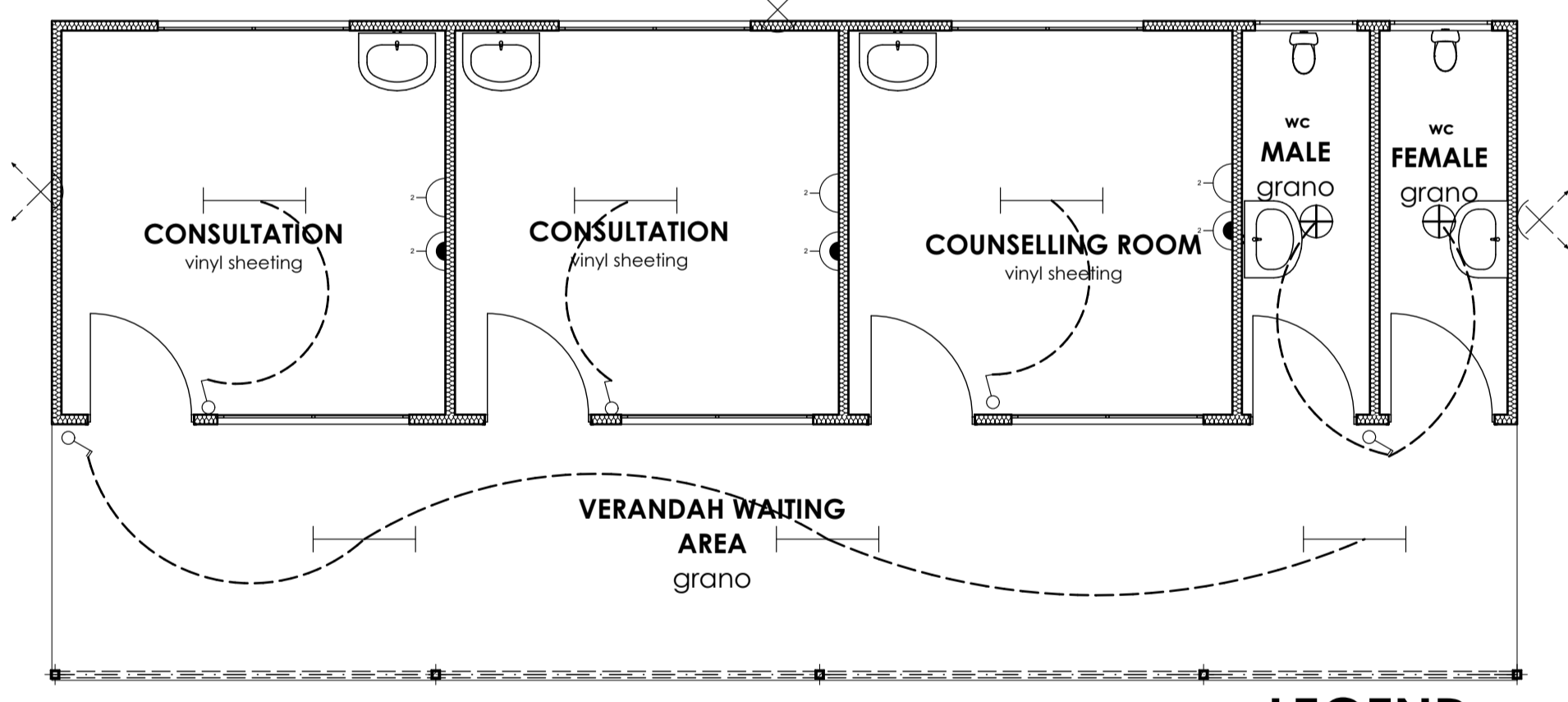
SIDE ELEVATION



SIDE ELEVATION



STRUCTURAL LAYOUT



ELECTRICAL LAYOUT

DOOR SCHEDULE

ELEVATION	QUANTITY	MATERIAL	ACCESSORIES
	3	75mm thick polystyrene panel with .58mm gauge Chromadek faced to specs	1 DIVER LOCK AND HANDLE
	2	75mm thick polystyrene panel with .58mm gauge Chromadek faced to specs	2 DIVER LOCK AND HANDLE DO2 AND HANDLE COMPLETE WITH SIGNALS

WINDOW SCHEDULE

ELEVATION	QUANTITY	MATERIAL	GLASS
	3	Anodized 'bronze' aluminium frame sliding with parameters by specifier	6mm clear glass
	3	Anodized 'bronze' aluminium frame sliding with parameters by specifier	6mm clear glass
	2	Anodized 'bronze' aluminium frame top hung with parameters by specifier	6mm clear glass

LEGEND

	Full spectrum fluorescent light
	Weatherproof light
	LED Flood light
	Double Socket 13AMP
	Double Socket 15AMP

client
NATIONAL AIDS COUNCIL

project
Proposed Porta Cabin Details

description
construction drawings; sections

MINISTRY OF LOCAL GOVERNMENT, PUBLIC WORKS & NATIONAL HOUSING

Designed	C.BWERINOF A
Drawn	C.B
Checked	C.B
Date	Dec. 2018
Scale	1:100, 1:50
Approved	G.C
project number	12/2018/P/CABIN