

GENERAL NOTES

DRAINAGE & PLUMBING NOTES:

- I, E 'S TO ALL BENDS AND JUNCTION IN DRAINS WITH MARKED COVERS AT GROUND LEVEL.
- DRAINS UNDER BUILDINGS TO BE 110mm c.i. ENCASED IN CONCRETE.
- INVERT LEVEL AT HEAD OF DRAIN TO BE A MINIMUM 450mm BELOW REDUCED GROUND LEVEL.
- ALL WASTE FITTINGS TO HAVE RESEAL TRAPS.
- ALL WASTE PIPES TO BE FULLY ACCESIBLE FOR MAINTENANCE AND REPAIRS.
- RAIN WATER DOWNPIPES TO BE MINIMUM 2.45m FROM GULLY.
- PROVIDE STORMWATER OUTLETS TO BOUNDARY WALLS ON LOWER COMMON BOUNDARY.
- ALL GULLYS TO BE EXPOSED
- NO WASTE PIPES TO BE ENCASED IN WALLS OR SLABS UNLESS OTHERWISE SHOWN.
- HEAD OF DRAINS TO HAVE A DIA. 100mm C.I.S.V..P

GENERAL SPECIFICATIONS:

- 75mm thick polystyrene panel roof with .58mm gauge Chromadek faced to specs
- 75mm thick polystyrene panel wall with .58mm gauge Chromadek faced to specs
- 150mm thick reinforced oversite concrete slab over 150mm well compacted hardcore to engineer's specs
- 50mm galvanized profiled columns encased in concrete with suitable hold down bolts
- 75mm thick polystyrene panel with .58mm gauge Chromadek faced to specs

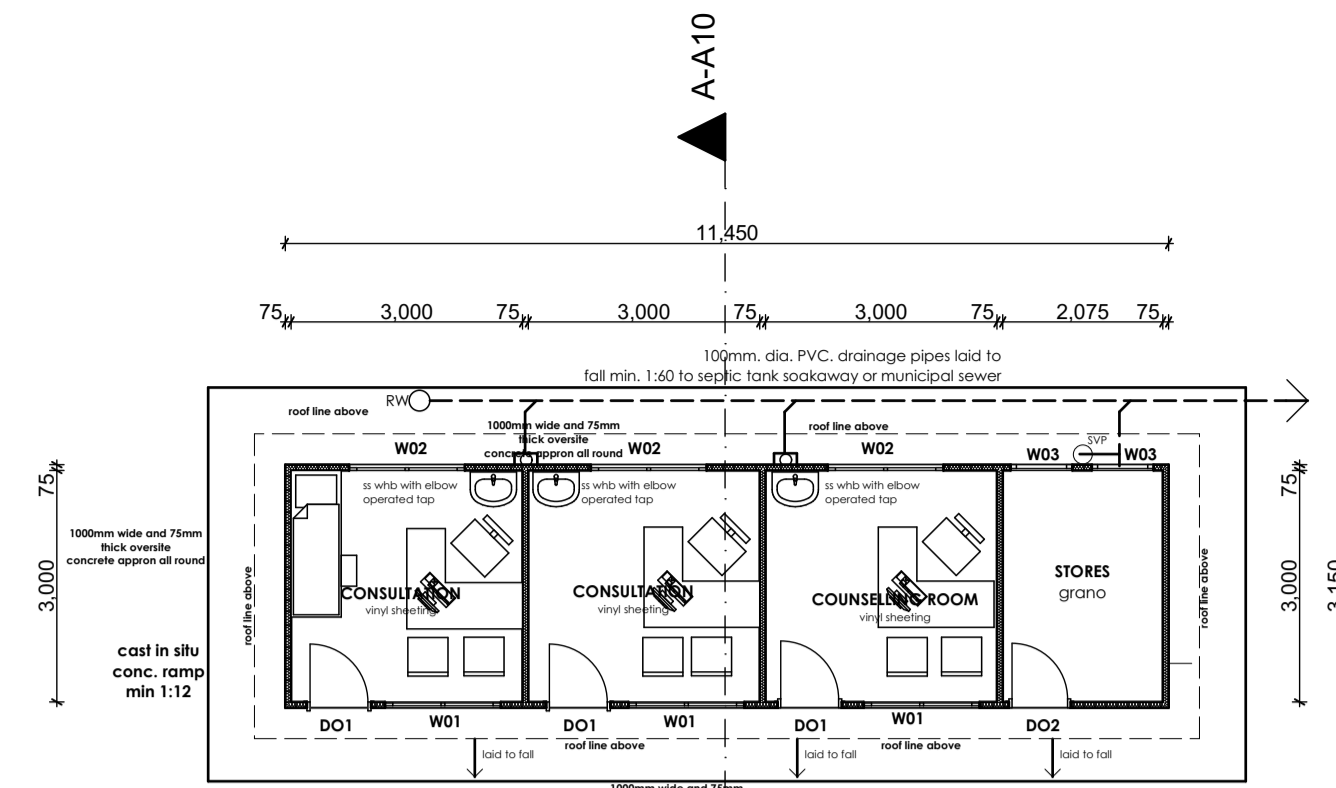
client
NATIONAL AIDS COUNCIL

project
Proposed Porta Cabin Details PROPOSAL WITHOUT TOILETS & VERANDAH

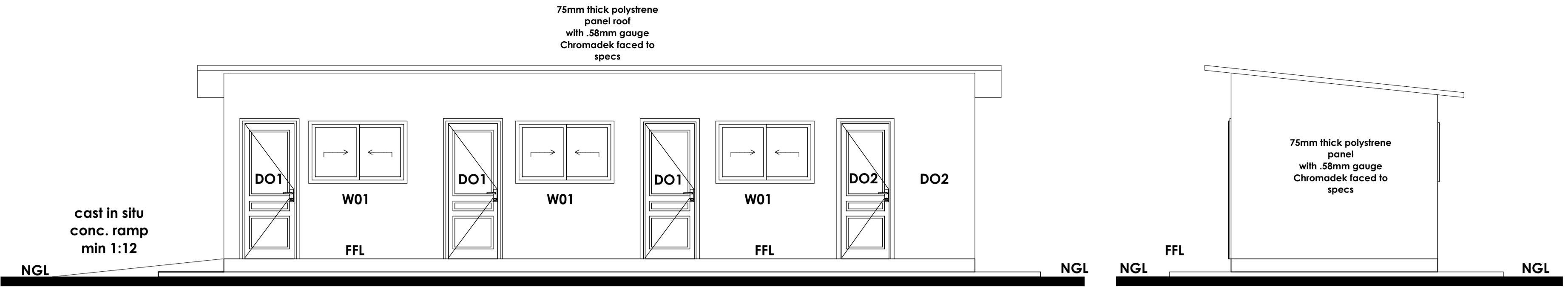
description
construction drawings; sections

MINISTRY OF LOCAL GOVERNMENT, PUBLIC WORKS & NATIONAL HOUSING

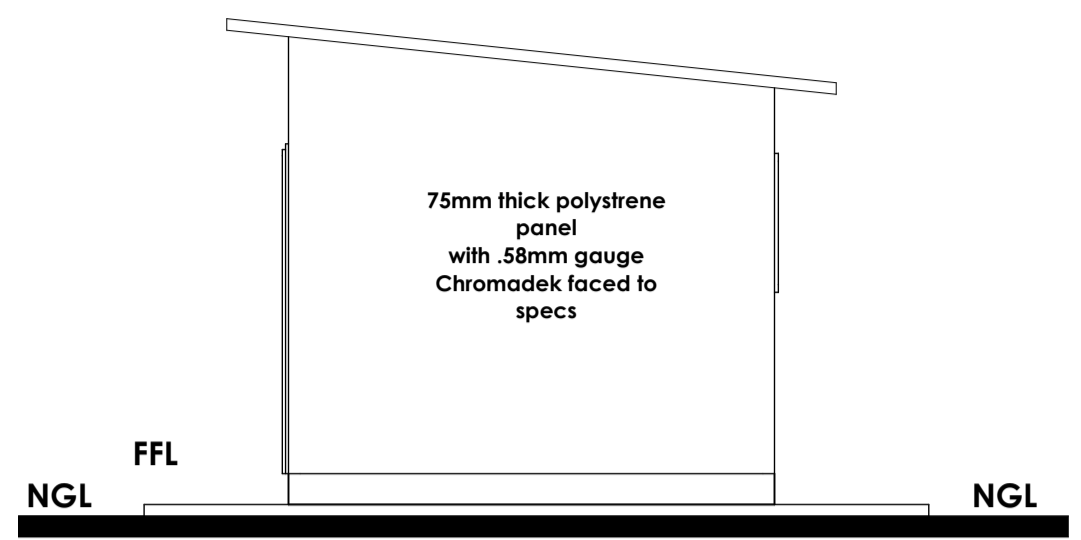
Designed	C.BWERINOFA
Drawn	C.B
Checked	C.B
Date	April. 2019
Scale	1:100, 1:50
Approved	G.C
project number	12/2018/P/CABIN



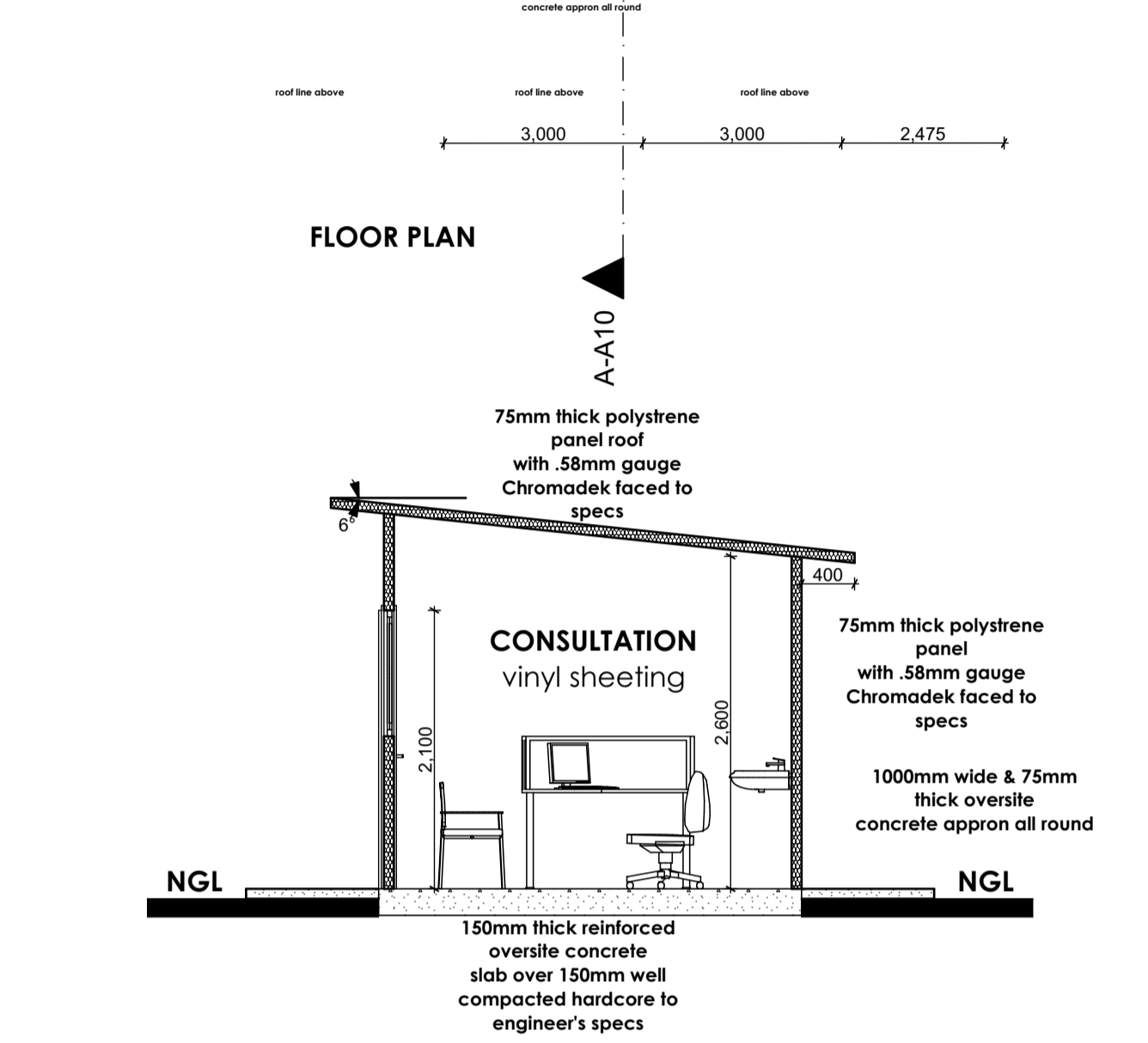
FLOOR PLAN



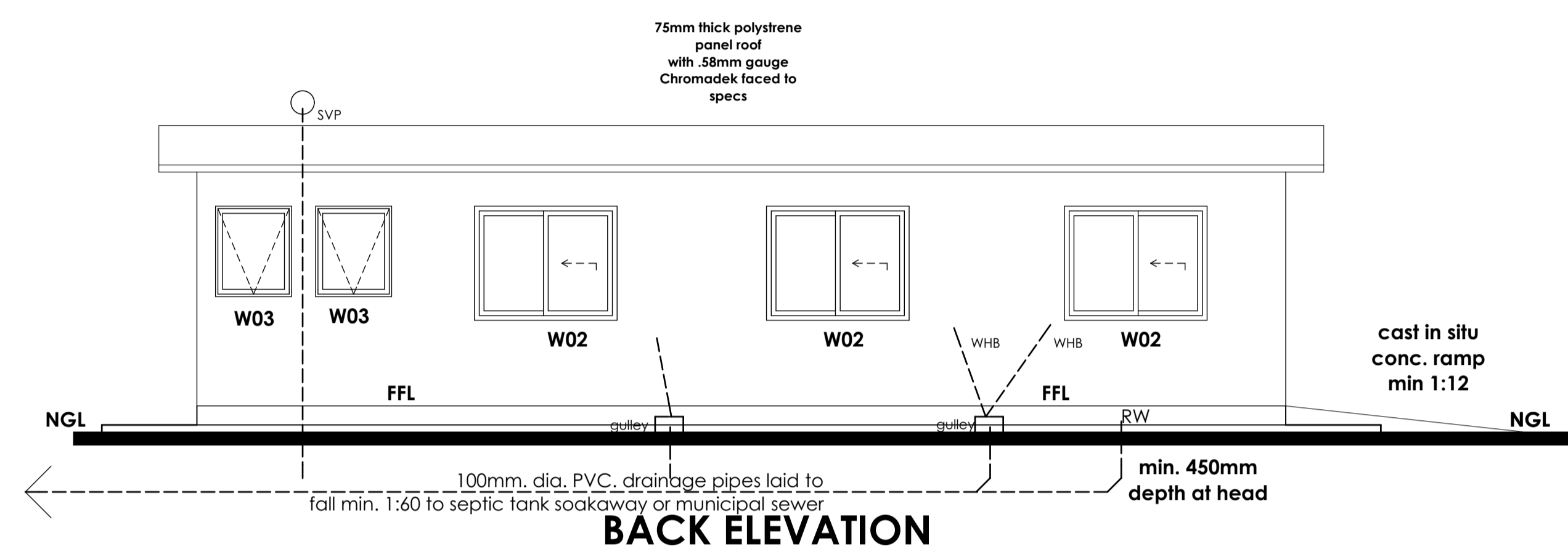
FRONT ELEVATION



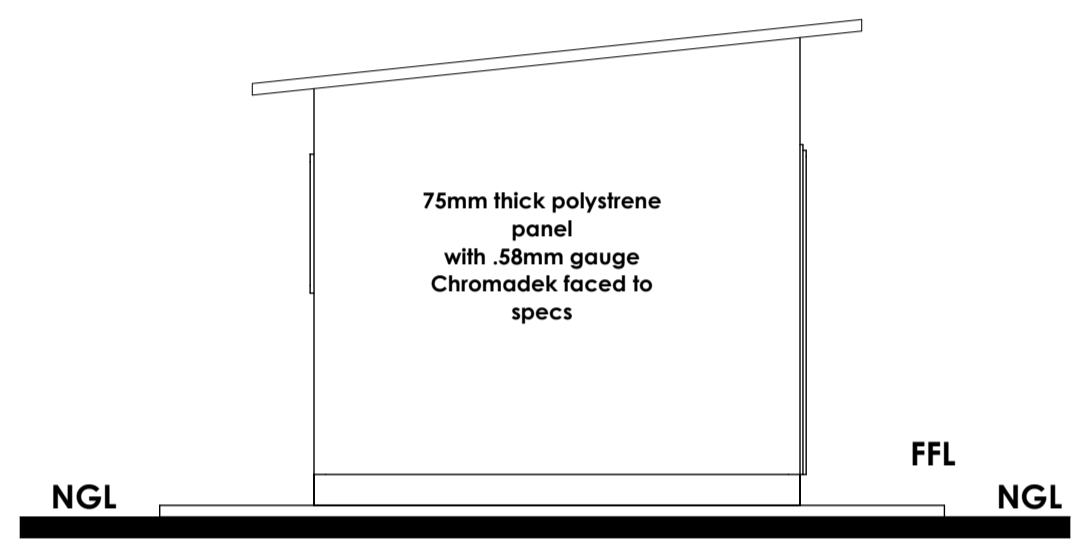
SIDE ELEVATION



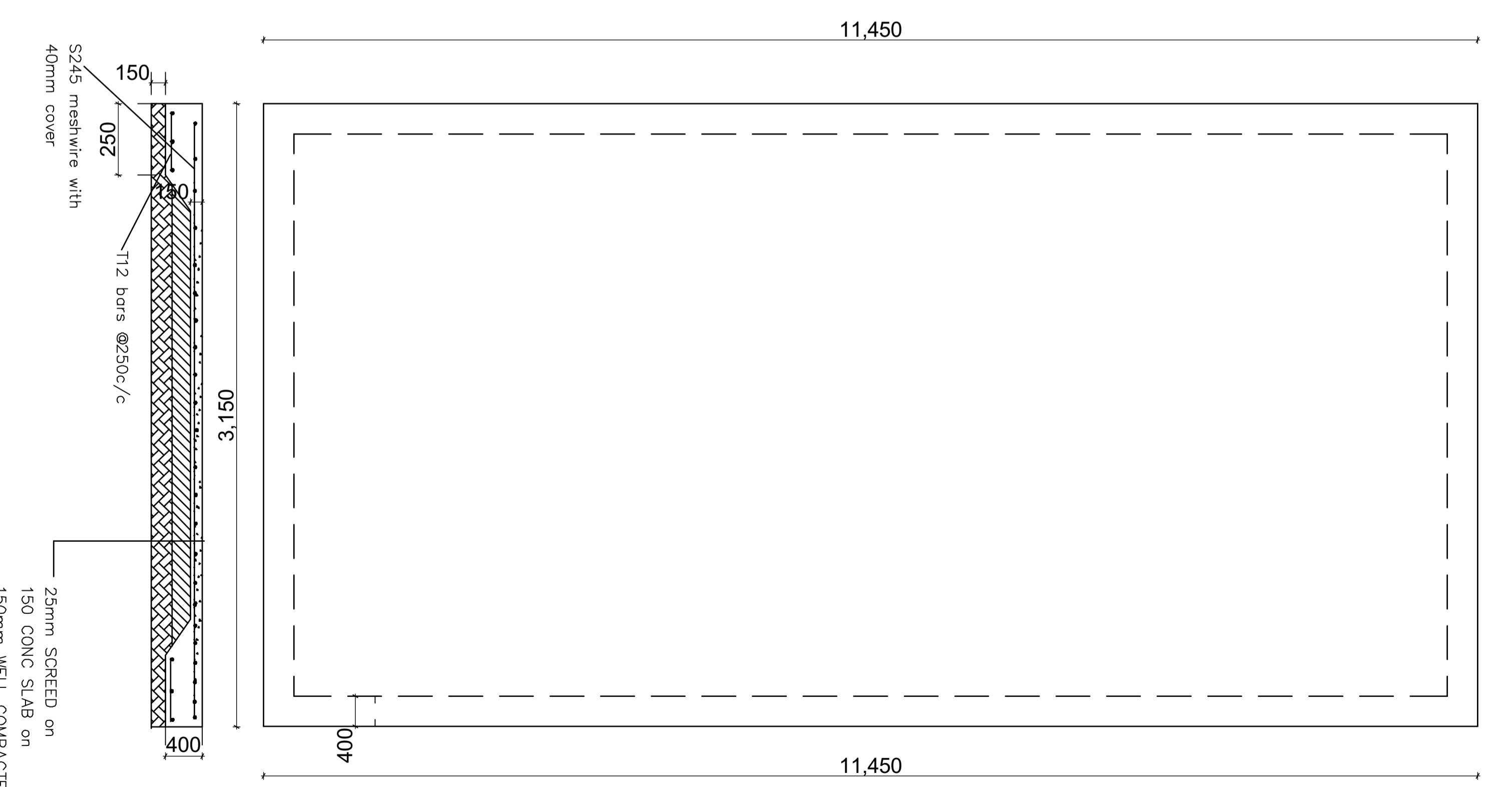
SECTION A-A9



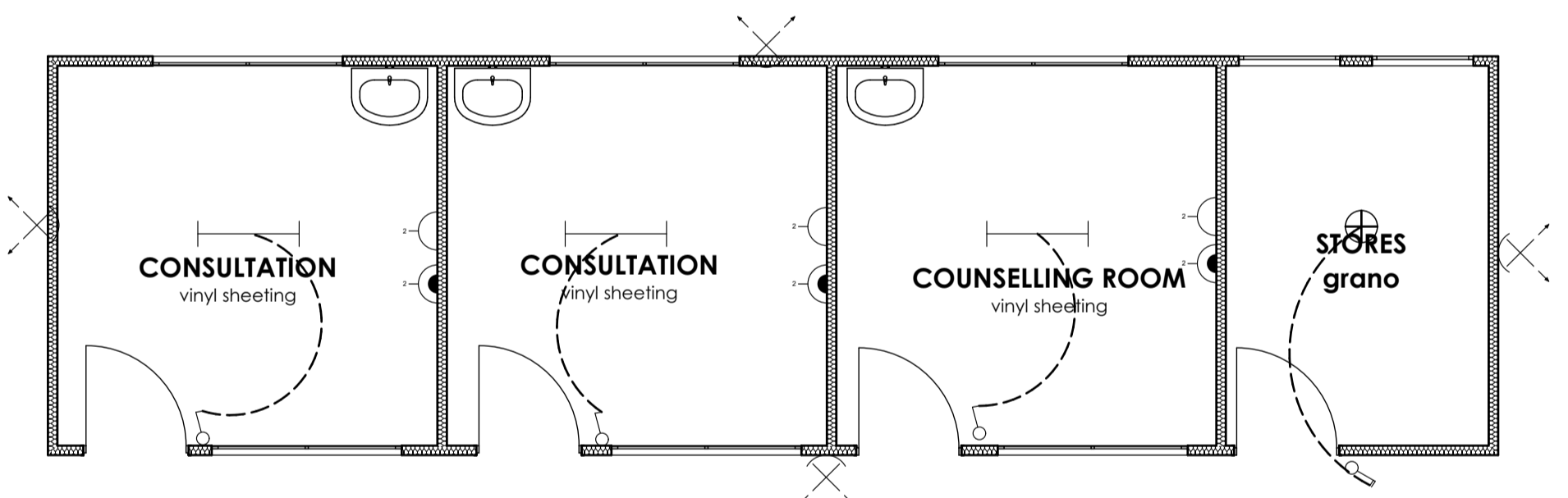
BACK ELEVATION



SIDE ELEVATION



STRUCTURAL LAYOUT



ELECTRICAL LAYOUT

LEGEND

	Full spectrum fluorescent light
	Weatherproof light
	LED Flood light
	Double Socket 13AMP
	Double Socket 15AMP

DOOR SCHEDULE

ELEVATION	QUANTITY	MATERIAL	ACCESSORIES
	3	75mm thick polystyrene panel with .58mm gauge Chromadek faced to specs	2 LIVES LOCK AND HANDLES
	2	75mm thick polystyrene panel with .58mm gauge Chromadek faced to specs	2 LIVES LOCK AND HANDLES COMPLETE WITH SIGNAGE

WINDOW SCHEDULE

ELEVATION	QUANTITY	MATERIAL	GLASS
	3	Anodised bronze aluminium frame sliding with perimeter to specialist	4mm clear glass
	3	Anodised bronze aluminium frame sliding with perimeter to specialist	4mm clear glass
	2	Anodised bronze aluminium frame slip hung with perimeter to specialist	4mm clear glass