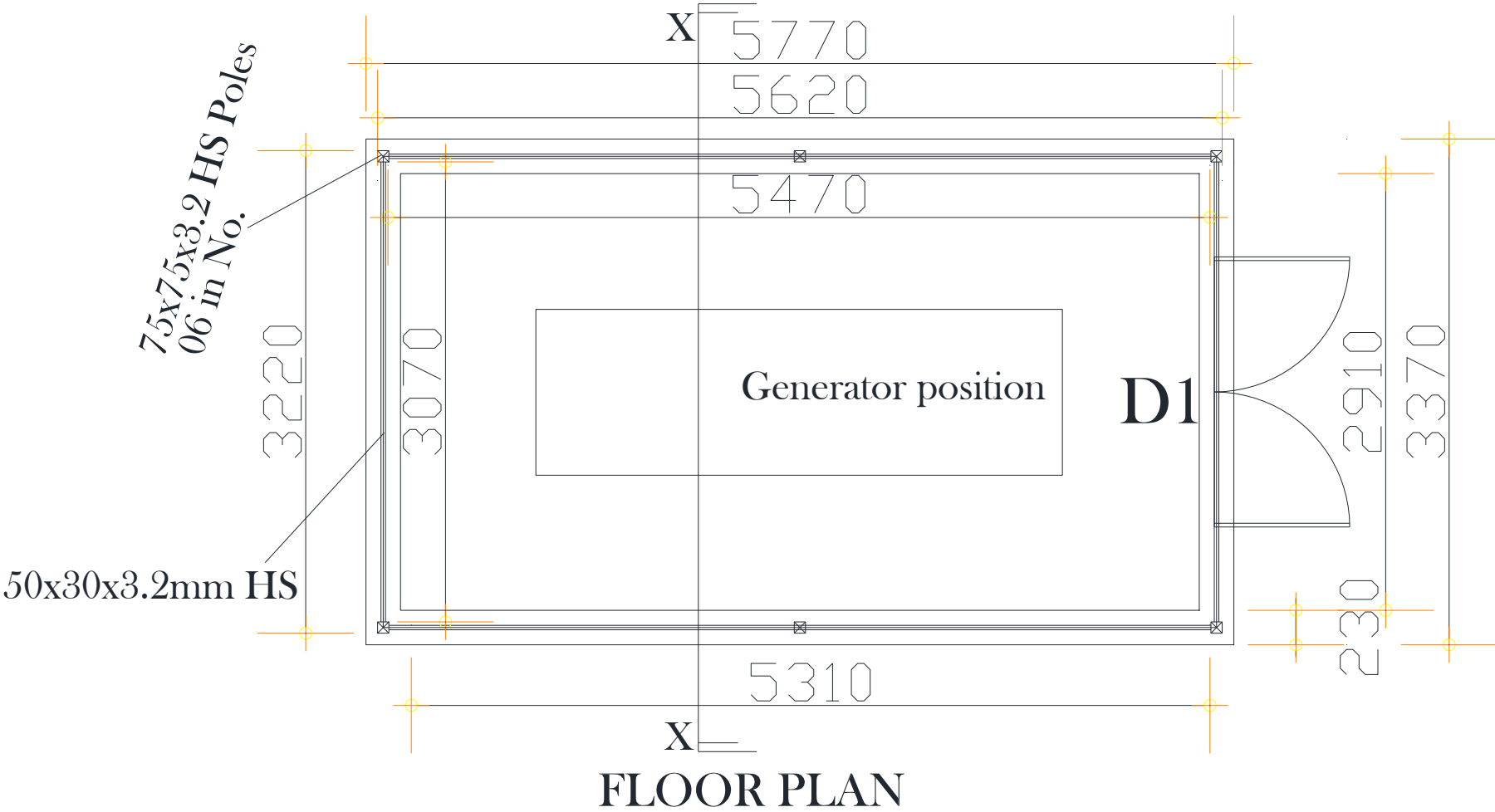
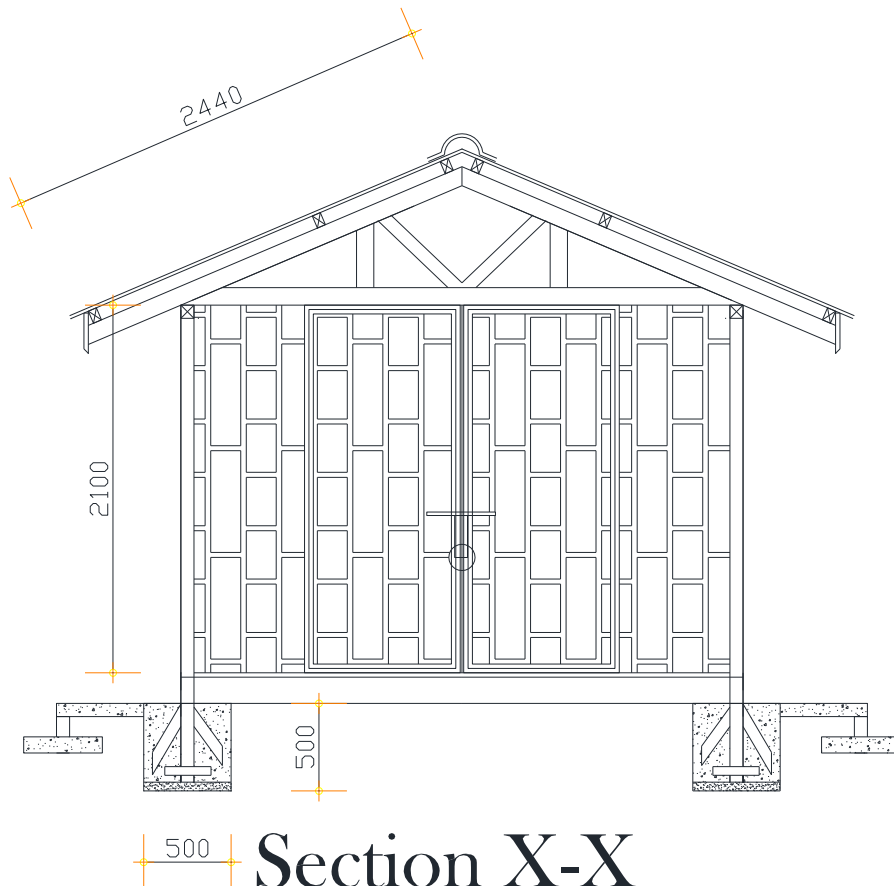


DRAWING FOR THE GENERATOR HOUSE FOR WAU CENTRAL PRISONS





ROOFING NOTES:

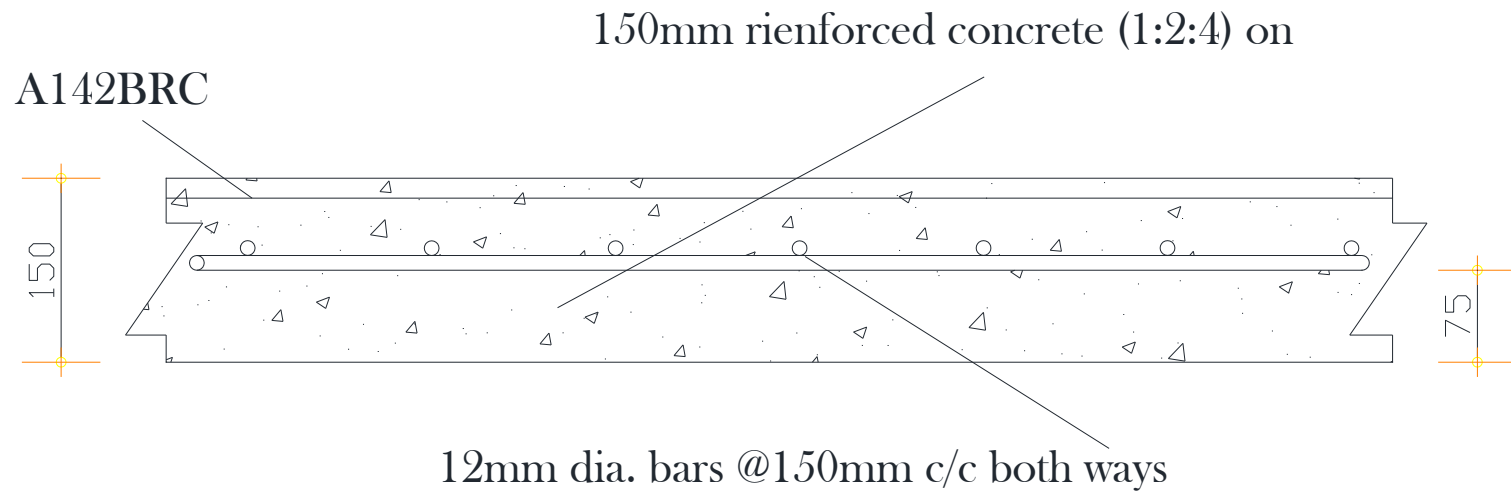
Fix pre coated galvanised ridge cover on
 G28 Pre coated galv. corrugated iron sheets on
 60x40x2mm steel roofing purlins on,
 60x40x3mm steel principle rafters,
 60x40x3mm steel tie beam,
 60x40x3mm steel struts and ties

SUBSTRUCTURE NOTES:

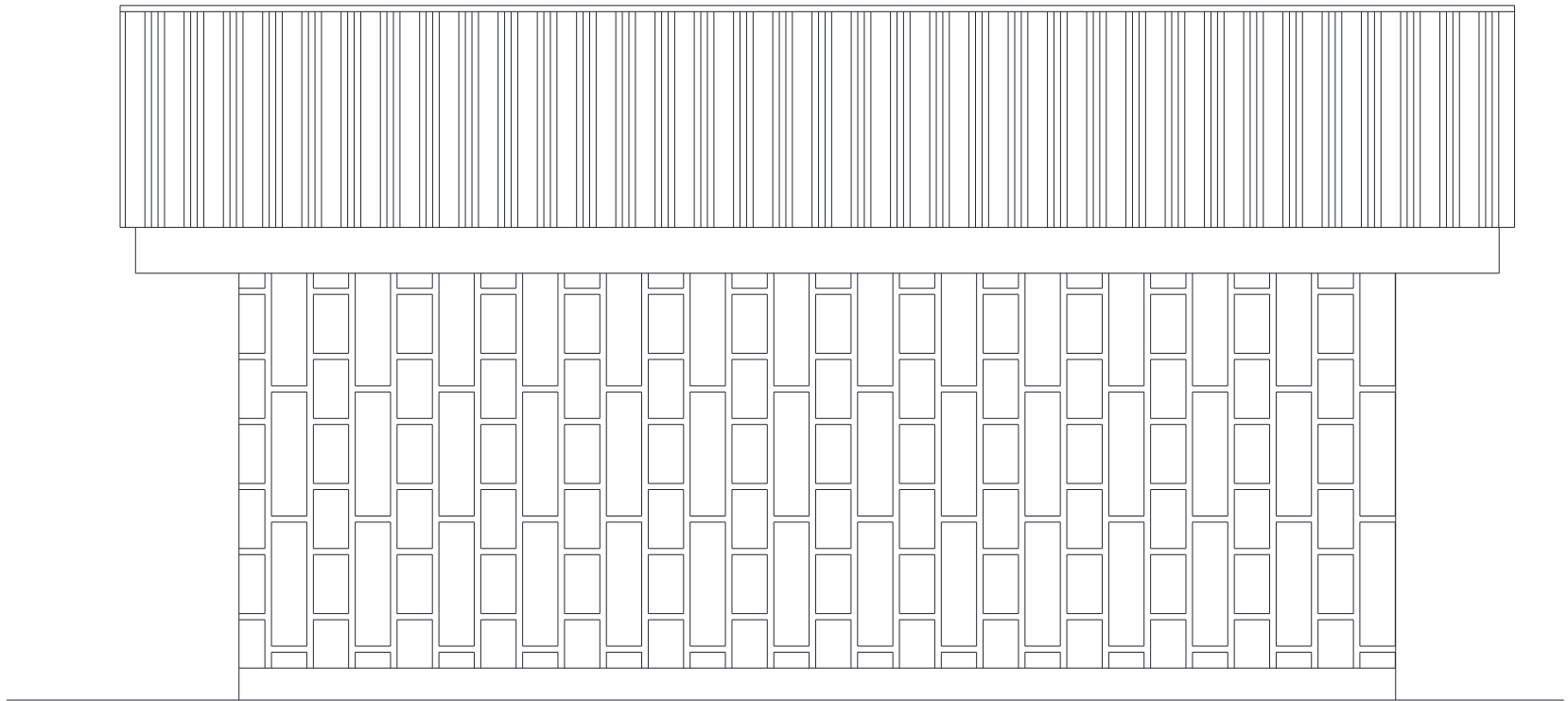
25mm cement sand screed (1:3) on
 150mm reinforced concrete (1:2:4) on
 230mm hard core on compacted murrum,
 230mm foundations wall in between column pads
 230mm foundation concrete on firm base
 500mmx500mmx500mm foundations to poles(1:2:4).
 concrete mix.

3-Extra pieces provided and welded as shown in the drawing

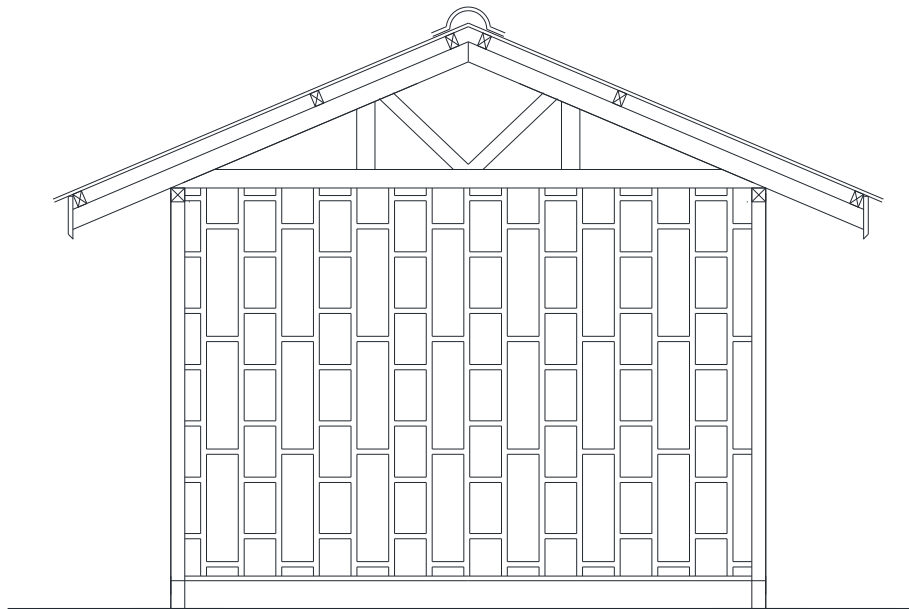
Foundation depth to be determined on site
 But Foundation depth NOT less than 500mm



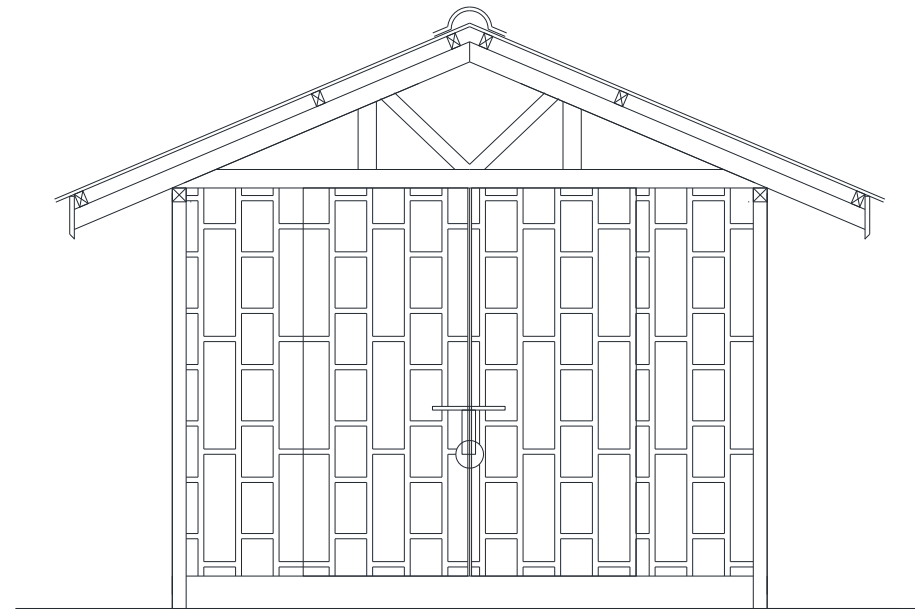
SLAB DETAILS



TYPICAL SIDE ELEVATION



LEFT SIDE ELEVATION



RIGHT RIGHT ELEVATION