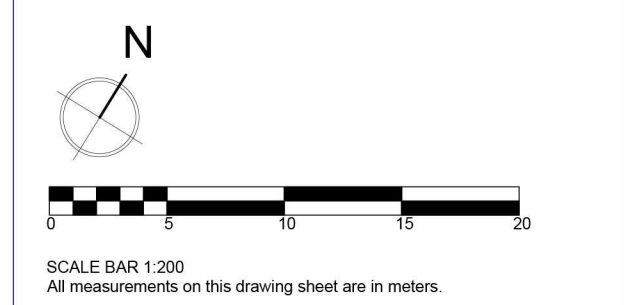
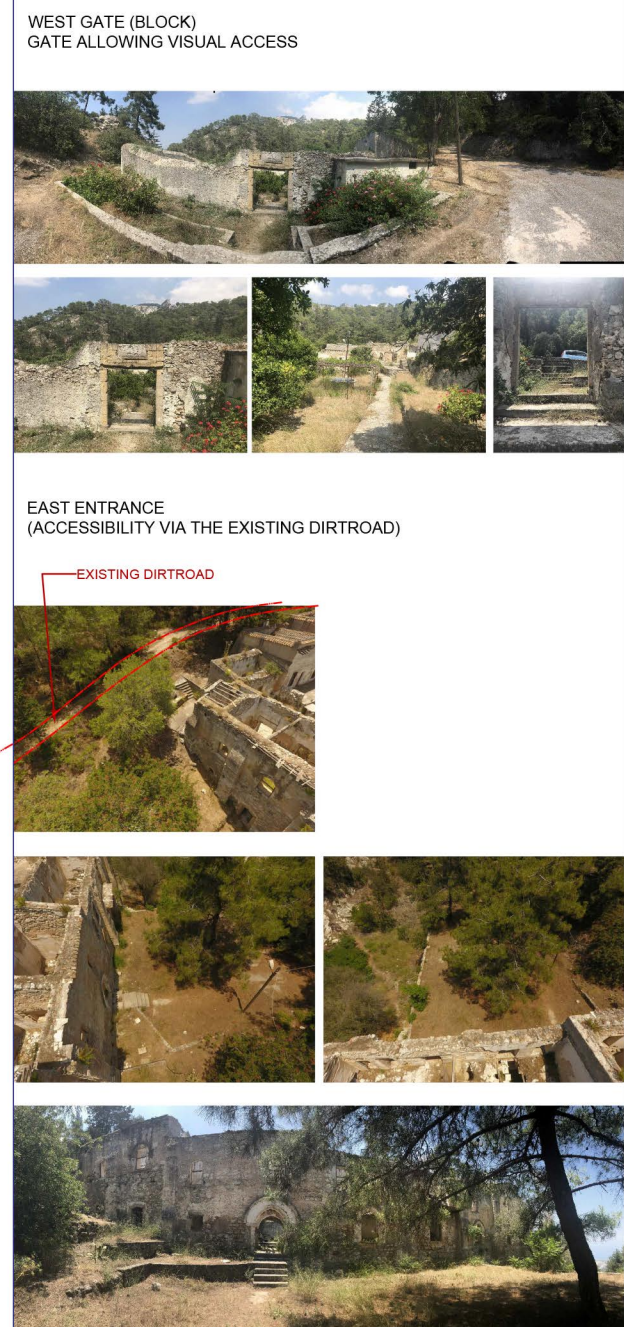




Courtyard		
A/A	Specified Works	Relevant Technical Specification
YS1	General cleaning	S1. Cleaning of areas
YS2	Pruning of trees	S26. Gardening works
YS3	Replacement of steel supporting structures for vines	S18. Construction of steel structures
YS4	Cleaning and maintenance of the existing drainage system	S27. Maintenance of drainage systems
YS5	Replacement of well cap	S27. Maintenance of drainage systems
YS6	Installation of steel balustrade	S18. Construction of steel structures
YS7	Addition of ramp at the south boundary of the plot for disabled access	S28. Concrete Work
Block C		
A/A	Specified Works	Relevant Technical Specification
CS1	General cleaning	S1. Cleaning of areas
CS2	Removal of deteriorated plaster sections	S3. Removal of plaster render coatings
CS3	Removal of organic growth from the masonry	S2. Control of organic growth
CS4	Replacement of damaged timber beams of the floor (including removal of all floor overlays)	S14. Replacement of damaged timber beams
CS5	In situ treatment of remaining timber members	S5. Treatment of timber sections
CS6	Installation of steel tie rods along the length of the transversal walls to connect the longitudinal walls of the structure	S17. Installation of steel tie rods
CS7	Removal of concrete balcony on the east facade wall	S25. Removal of existing concrete sections
CS8	Addition of steel beam frame structure to retain lateral movement of unrestrained sections of the facade wall	S18. Construction of steel structures
CS9	Reconstruction of partially collapsed masonry sections	S7. Reconstruction of masonry
CS10	Repair of cracks by means of repointing, grout injection and/or localized masonry reconstruction	S6. Repointing of masonry S7. Reconstruction of masonry S11. Consolidation and repair of masonry by means of grout injections
CS11	Repair of existing concrete slab	S9. Treatment of reinforced concrete sections
CS12	Repointing of masonry throughout	S6. Repointing of masonry
CS13	Construction of capping layer on the upper part of all walls	S8. Construction of capping layer
CS14	Installation of drainage channel along the masonry walls	S46. Installation of drainage channels CANCELLED
CS15	Complete covering of floors with layers of granular materials and formation of ground drainage enclosures	S12. Covering of floors with granular material
CS16	Addition of ramp on the entrance for disabled access	S28. Concrete Work
CS17	Addition of timber enclosures at the east opening	S24. Timber enclosures
CS18	Installation of temporary structures for survey completion	S29. Completion of Survey and Detailed Documentation
CS19	Addition of steel enclosures	S23. Steel enclosures
CS20	Removal of concrete tread	S25. Removal of existing concrete sections



Project Title: Sourp Magar Monastery - Rehabilitation Plan and Conservation Designs			
Design:	Name:	Surname:	Licence no.:
Architect:	Zoe	Lordos	10907
Civil Engineer:	Andreas	Antoniou	71696
Designer Team: Senior Architect: Andreas Lordos Architects: Ioanna Anastasiadou, Enver Eronen, Christina Kleanthous Papademetriou, Constantina Hadjicosta Civil Engineer: Rogiros Ilampas Archaeologist: Anna Marangou			
Date:	28/02/2019	Scale:	1:200
Revisions:	27/03/2019 08/04/2019	17/04/2019	
Drawing Name: Public Accessibility +85.65 - Final		Drawing no.: A-Pr 01	



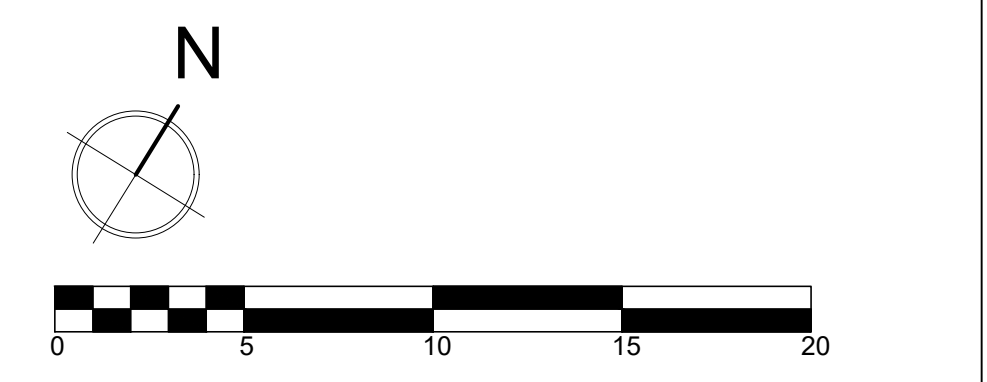
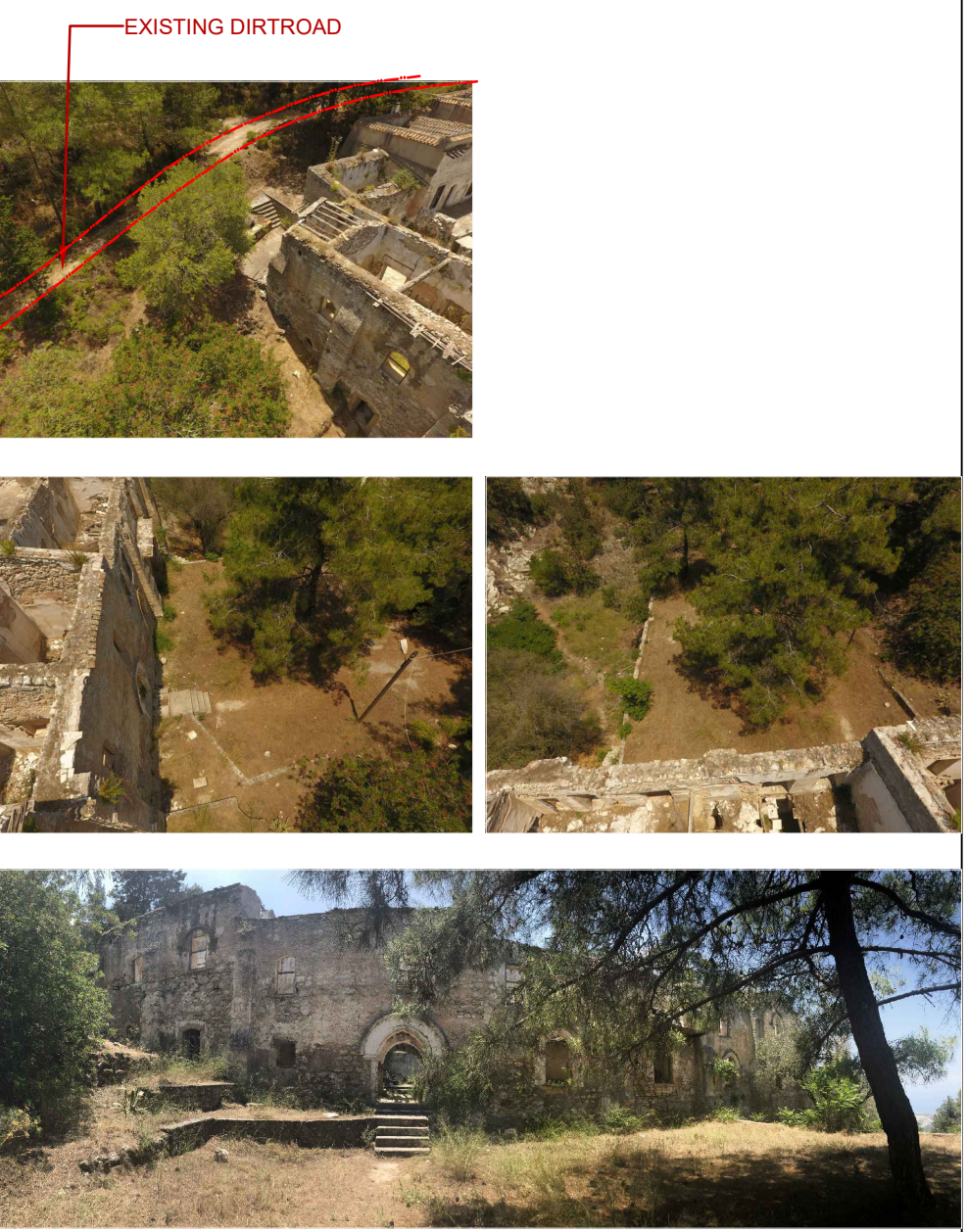


Courtyard		
A/A	Specified Works	Relevant Technical Specification
YS1	General cleaning	S1. Cleaning of areas
YS2	Pruning of trees	S26. Gardening works
YS3	Replacement of steel supporting structures for vines	S18. Construction of steel structures
YS4	Cleaning and maintenance of the existing drainage system	S27. Maintenance of drainage systems
YS5	Replacement of well cap	S27. Maintenance of drainage systems
YS6	Installation of steel balustrade	S18. Construction of steel structures
YS7	Addition of ramp at the south boundary of the plot for disabled access	S28. Concrete Work

WEST GATE (BLOCK)  
GATE ALLOWING VISUAL ACCESS



EAST ENTRANCE  
(ACCESSIBILITY VIA THE EXISTING DIRTROAD)



Key Note:

- Plot boundaries
- Existing Road
- Existing Dirtroad
- Road as shown on the cadastral map
- Area available for parking
- Inaccessible Areas



United Nations Development Programme

Empowering lives. Redefining nations.



This is a Project of the Technical Committee on Cultural Heritage funded by the European Union

Project Title:  
Sourp Magar Monastery - Rehabilitation Plan and Conservation Designs

Design:	Name:	Surname:	Licence no.:
Architect:	Zoe	Lordos	10907
Civil Engineer:	Andreas	Antoniou	71696

Senior Architect: Andreas Lordos  
Architects: Ioanna Anastasiadou, Enver Eronen, Christina Kleanthous  
Papademetriou, Constantina Hadjicosta  
Civil Engineer: Rogiros Illampas  
Archaeologist: Anna Marangou

Date:	28/02/2019	Scale:	1:200
Revisions:	27/03/2019		
	08/04/2019		

Drawing Name: Public Accessibility +98.00 - Final	Drawing no.: <b>A-Pr 01B</b>
--	---------------------------------





Courtyard	
A/A	Specified Works
Y51.	General cleaning
Y52.	Pruning of trees
Y53.	Replacement of steel supporting structures for vines
Y54.	Cleaning and maintenance of the existing drainage system
Y55.	Replacement of wall cap systems
Y56.	Installation of steel balustrade
Y57.	Addition of ramp at the south boundary of the plot for disabled access.

Block A	
A/A	Specified Works
AS1.	General cleaning
AS2.	Cleaning of floors from organic growth
AS3.	Removal of organic growth from masonry
AS4.	Removal of cementitious and deteriorated plasters
AS5.	Replacement of damaged timber lintels
AS6.	Repair of damaged concrete lintel
AS7.	Reconstruction of partially collapsed masonry sections
AS8.	Repair of cracks by means of reporting, grout injection and/or localized masonry reconstruction
AS9.	In situ treatment of remaining timber members
AS10.	Construction of capping layer on the upper part of all walls
AS11.	Repointing of masonry throughout
AS12.	Complete covering of floors with layers of granular materials and formation of ground drainage inclinations
AS13.	Addition of timber enclosures at the south openings

Block B	
A/A	Specified Works
BS1.	General cleaning
BS2.	Repair of damaged plaster/ render coatings
BS3.	Painting of interior walls
BS4.	Inspection and maintenance of the roof
BS5.	Provision of access to blocks for the completion of survey
BS6.	Maintenance of existing Doors and Windows

Block C	
A/A	Specified Works
CS1.	General cleaning
CS2.	Removal of deteriorated plaster sections
CS3.	Removal of organic growth from the masonry
CS4.	Replacement of damaged timber beams of the floor (including removal of all floor overlays)
CS5.	In situ treatment of remaining timber members
CS6.	Installation of steel tie rods along the length of the transversal walls to connect the longitudinal walls of the structure
CS7.	Removal of concrete balcony on the east facade wall
CS8.	Addition of steel truss frame structure to retain lateral movement of unrestrained sections of the facade wall
CS9.	Reconstruction of partially collapsed masonry sections
CS10.	Repair of cracks by means of reporting, grout injection and/or localized masonry reconstruction
CS11.	Repointing of masonry throughout
CS12.	Construction of capping layer on the upper part of all walls
CS13.	Complete covering of floors with layers of granular materials and formation of ground drainage inclinations
CS14.	Installation of drainage channel along the main entrance - CANCELLED
CS15.	Complete covering of floors with layers of granular materials and formation of ground drainage inclinations
CS16.	Addition of ramp on the entrance for disabled access
CS17.	Addition of timber enclosures at the east openings
CS18.	Installation of temporary structures for survey completion
CS19.	Addition of steel enclosures
CS20.	Removal of concrete 'tread

Block D	
A/A	Specified Works
DS1.	General cleaning
DS2.	Reconstruction of partially collapsed masonry sections
DS3.	Repair of cracks by means of reporting, grout injection and/or localized masonry reconstruction
DS4.	Repointing of masonry throughout
DS5.	Waterproofing of the exterior surface of the cells' masonry vault roof using compatible cement free material

Block E	
A/A	Specified Works
ES1.	General cleaning
ES2.	Cleaning of masonry and plaster surfaces from organic growth
ES3.	Repair of cracks by means of reporting, grout injection and/or localized masonry reconstruction
ES4.	Addition of steel enclosure at the window opening
ES5.	Addition of timber enclosures at the door and window openings
ES6.	Repair and waterproofing of the exterior cementitious coating of the vaulted roof
ES7.	Repair of plaster coatings
ES8.	Replacement of missing floor tiles with similar decorated tiles
ES9.	Reconstruction of baptism

Block F	
A/A	Specified Works
FS1.	General cleaning
FS2.	Removal of plaster sections that are in danger of collapse
FS3.	Removal of organic growth from the floors and the masonry
FS4.	Repair of cracks by means of reporting, grout injection and/or localized masonry reconstruction
FS5.	Consolidation of masonry arched section by means of grout injection
FS6.	Repointing of masonry throughout
FS7.	Repair of concrete bellify frame
FS8.	Construction of capping layer on the upper part of all walls
FS9.	Replacement of missing floor tiles with similar decorated tiles

Block G	
A/A	Specified Works
GS1.	General cleaning
GS2.	Removal of organic growth from masonry
GS3.	Repair of cracks by means of reporting, grout injection and/or localized masonry reconstruction
GS4.	Replacement of damaged timber and steel lintels
GS5.	In situ treatment of remaining timber members
GS6.	Repointing of masonry throughout
GS7.	Construction of capping layer on the upper part of all walls
GS8.	Addition of steel enclosure at the main west entrance opening

Block H	
A/A	Specified Works
HS1.	General cleaning
HS2.	Removal of organic growth from the floors and the masonry
HS3.	Repair of cracks by means of reporting, grout injection and/or localized masonry reconstruction
HS4.	Replacement of damaged timber and steel lintels
HS5.	In situ treatment of remaining timber members
HS6.	Repointing of masonry throughout
HS7.	Construction of capping layer on the upper part of all walls
HS8.	Addition of steel enclosure at the main west entrance opening

Block I	
A/A	Specified Works
IS1.	General cleaning
IS2.	Removal of organic growth from the floors and the masonry
IS3.	Repair of cracks by means of reporting, grout injection and/or localized masonry reconstruction
IS4.	Replacement of damaged timber and steel lintels
IS5.	In situ treatment of remaining timber members
IS6.	Repointing of masonry throughout
IS7.	Construction of capping layer on the upper part of all walls
IS8.	Addition of steel enclosure at the main west entrance opening

Block J	
A/A	Specified Works
JS1.	General cleaning
JS2.	Removal of organic growth from the floors and the masonry
JS3.	Repair of cracks by means of reporting, grout injection and/or localized masonry reconstruction
JS4.	Replacement of damaged timber and steel lintels
JS5.	In situ treatment of remaining timber members
JS6.	Repointing of masonry throughout
JS7.	Construction of capping layer on the upper part of all walls
JS8.	Addition of steel enclosure at the main west entrance opening

Block K	
A/A	Specified Works
KS1.	General cleaning
KS2.	Removal of organic growth from the floors and the masonry
KS3.	Repair of cracks by means of reporting, grout injection and/or localized masonry reconstruction
KS4.	Replacement of damaged timber and steel lintels
KS5.	In situ treatment of remaining timber members
KS6.	Repointing of masonry throughout
KS7.	Construction of capping layer on the upper part of all walls
KS8.	Addition of steel enclosure at the main west entrance opening

Block L	
A/A	Specified Works
LS1.	General cleaning
LS2.	Removal of organic growth from the floors and the masonry
LS3.	Repair of cracks by means of reporting, grout injection and/or localized masonry reconstruction
LS4.	Replacement of damaged timber and steel lintels
LS5.	In situ treatment of remaining timber members
LS6.	Repointing of masonry throughout
LS7.	Construction of capping layer on the upper part of all walls
LS8.	Addition of steel enclosure at the main west entrance opening

Block M	
A/A	Specified Works
MS1.	General cleaning
MS2.	Removal of organic growth from the floors and the masonry
MS3.	Repair of cracks by means of reporting, grout injection and/or localized masonry reconstruction
MS4.	Replacement of damaged timber and steel lintels
MS5.	In situ treatment of remaining timber members
MS6.	Repointing of masonry throughout
MS7.	Construction of capping layer on the upper part of all walls
MS8.	Addition of steel enclosure at the main west entrance opening

Block N	
A/A	Specified Works
NS1.	General cleaning
NS2.	Removal of organic growth from the floors and the masonry
NS3.	Repair of cracks by means of reporting, grout injection and/or localized masonry reconstruction
NS4.	Replacement of damaged timber and steel lintels
NS5.	In situ treatment of remaining timber members
NS6.	Repointing of masonry throughout
NS7.	Construction of capping layer on the upper part of all walls
NS8.	Addition of steel enclosure at the main west entrance opening

Block O	
A/A	Specified Works
OS1.	General cleaning
OS2.	Removal of organic growth from the floors and the masonry
OS3.	Repair of cracks by means of reporting, grout injection and/or localized masonry reconstruction
OS4.	Replacement of damaged timber and steel lintels
OS5.	In situ treatment of remaining timber members
OS6.	Repointing of masonry throughout
OS7.	Construction of capping layer on the upper part of all walls
OS8.	Addition of steel enclosure at the main west entrance opening

Block P	
A/A	Specified Works
PS1.	General cleaning
PS2.	Removal of organic growth from the floors and the masonry
PS3.	Repair of cracks by means of reporting, grout injection and/or localized masonry reconstruction
PS4.	Replacement of damaged timber and steel lintels
PS5.	In situ treatment of remaining timber members
PS6.	Repointing of masonry throughout
PS7.	Construction of capping layer on the upper part of all walls
PS8.	Addition of steel enclosure at the main west entrance opening

Block Q	
A/A	Specified Works
QS1.	General cleaning
QS2.	Removal of organic growth from the floors and the masonry
QS3.	Repair of cracks by means of reporting, grout injection and/or localized masonry reconstruction
QS4.	Replacement of damaged timber and steel lintels
QS5.	In situ treatment of remaining timber members
QS6.	Repointing of masonry throughout
QS7.	Construction of capping layer on the upper part of all walls
QS8.	Addition of steel enclosure at the main west entrance opening

Block R	
A/A	Specified Works
RS1.	General cleaning
RS2.	Removal of organic growth from the floors and the masonry
RS3.	Repair of cracks by means of reporting, grout injection and/or localized masonry reconstruction
RS4.	Replacement of damaged timber and steel lintels
RS5.	In situ treatment of remaining timber members
RS6.	Repointing of masonry throughout
RS7.	Construction of capping layer on the upper part of all walls
RS8.	Addition of steel enclosure at the main west entrance opening

Block S	
A/A	Specified Works
SS1.	General cleaning
SS2.	Removal of organic growth from the floors and the masonry
SS3.	Repair of cracks by means of reporting, grout injection and/or localized masonry reconstruction
SS4.	Replacement of damaged timber and steel lintels
SS5.	In situ treatment of remaining timber members
SS6.	Repointing of masonry throughout
SS7.	Construction of capping layer on the upper part of all walls
SS8.	Addition of steel enclosure at the main west entrance opening

Block T	
A/A	Specified Works
TS1.	General cleaning
TS2.	Removal of organic growth from the floors and the masonry
TS3.	Repair of cracks by means of reporting, grout injection and/or localized masonry reconstruction
TS4.	Replacement of damaged timber and steel lintels
TS5.	In situ treatment of remaining timber members
TS6.	Repointing of masonry throughout
TS7.	Construction of capping layer on the upper part of all walls
TS8.	Addition of steel enclosure at the main west entrance opening

Block U	
A/A	Specified Works
US1.	General cleaning
US2.	Removal of organic growth from the floors and the masonry
US3.	Repair of cracks by means of reporting, grout injection and/or localized masonry reconstruction
US4.	Replacement of damaged timber and steel lintels
US5.	In situ treatment of remaining timber members
US6.	Repointing of masonry throughout
US7.	Construction of capping layer on the upper part of all walls
US8.	Addition of steel enclosure at the main west entrance opening

Block V	
A/A	Specified Works
VS1.	General cleaning
VS2.	Removal of organic growth from the floors and the masonry
VS3.	Repair of cracks by means of reporting, grout injection and/or localized masonry reconstruction
VS4.	Replacement of damaged timber and steel lintels
VS5.	In situ treatment of remaining timber members
VS6.	Repointing of masonry throughout
VS7.	Construction of capping layer on the upper part of all walls
VS8.	Addition of steel enclosure at the main west entrance opening

Block W	
A/A	Specified Works
WS1.	General cleaning
WS2.	Removal of organic growth from the floors and the masonry
WS3.	Repair of cracks by means of reporting, grout injection and/or localized masonry reconstruction
WS4.	Replacement of damaged timber and steel lintels
WS5.	In situ treatment of remaining timber members
WS6.	Repointing of masonry throughout
WS7.	Construction of capping layer on the upper part of all walls
WS8.	Addition of steel enclosure at the main west entrance opening

Block X	
A/A	Specified Works
XS1.	General cleaning
XS2.	Removal of organic growth from the floors and the masonry
XS3.	Repair of cracks by means of reporting, grout injection and/or localized masonry reconstruction
XS4.	Replacement of damaged timber and steel lintels
XS5.	In situ treatment of remaining timber members
XS6.	Repointing of masonry throughout
XS7.	Construction of capping layer on the upper part of all walls
XS8.	Addition of steel enclosure at the main west entrance opening

Block Y	
A/A	Specified Works
YS1.	General cleaning
YS2.	Removal of organic growth from the floors and the masonry
YS3.	Repair of cracks by means of reporting, grout injection and/or localized masonry reconstruction
YS4.	Replacement of damaged timber and steel lintels
YS5.	In situ treatment of remaining timber members
YS6.	Repointing of masonry throughout
YS7.	Construction of capping layer on the upper part of all walls
YS8.	Addition of steel enclosure at the main west entrance opening

Block Z	
A/A	Specified Works
ZS1.	General cleaning
ZS2.	Removal of organic growth from the floors and the masonry
ZS3.	Repair of cracks by means of reporting, grout injection and/or localized masonry reconstruction
ZS4.	Replacement of damaged timber and steel lintels
ZS5.	In situ treatment of remaining timber members
ZS6.	Repointing of masonry throughout
ZS7.	Construction of capping layer on the upper part of all walls
ZS8.	Addition of steel enclosure at the main west entrance opening

Block AA	
A/A	Specified Works
AS1.	General cleaning
AS2.	Removal of organic growth from the floors and the masonry
AS3.	Repair of cracks by means of reporting, grout injection and/or localized masonry reconstruction
AS4.	Replacement of damaged timber and steel lintels
AS5.	In situ treatment of remaining timber members
AS6.	Repointing of masonry throughout
AS7.	Construction of capping layer on the upper part of all walls
AS8.	Addition of steel enclosure at the main west entrance opening

Block AB	
A/A	Specified Works
BS1.	General cleaning
BS2.	Removal of organic growth from the floors and the masonry
BS3.	Repair of cracks by means of reporting, grout injection and/or localized masonry reconstruction
BS4.	Replacement of damaged timber and steel lintels
BS5.	In situ treatment of remaining timber members
BS6.	Repointing of masonry throughout
BS7.	Construction of capping layer on the upper part of all walls
BS8.	Addition of steel enclosure at the main west entrance opening

Block AC	
A/A	Specified Works
CS1.	General cleaning
CS2.	Removal of organic growth from the floors and the masonry
CS3.	Repair of cracks by means of reporting, grout injection and/or localized masonry reconstruction
CS4.	Replacement of damaged timber and steel lintels
CS5.	In situ treatment of remaining timber members
CS6.	Repointing of masonry throughout
CS7.	Construction of capping layer on the upper part of all walls
CS8.	Addition of steel enclosure at the main west entrance opening

Block AD	
A/A	Specified Works
DS1.	General cleaning
DS2.	Removal of organic growth from the floors and the masonry
DS3.	Repair of cracks by means of reporting, grout injection and/or localized masonry reconstruction
DS4.	Replacement of damaged timber and steel lintels
DS5.	In situ treatment of remaining timber members
DS6.	Repointing of masonry throughout
DS7.	Construction of capping layer on the upper part of all walls
DS8.	Addition of steel enclosure at the main west entrance opening

Block AE	
A/A	Specified Works
ES1.	General cleaning
ES2.	Removal of organic growth from the floors and the masonry
ES3.	Repair of cracks by means of reporting, grout injection and/or localized masonry reconstruction
ES4.	Replacement of damaged timber and steel lintels
ES5.	In situ treatment of remaining timber members
ES6.	Repointing of masonry throughout
ES7.	Construction of capping layer on the upper part of all walls
ES8.	Addition of steel enclosure at the main west entrance opening

Project Title:  
Sourp Magar Monastery Rehabilitation Plan and  
Conservation Designs

Design: Name: Surname: Licence no.:  
Architect: Zoe Lordos 10907  
Civil Engineer: Andreas Antoniou 71696

Designer Team: Senior Architect: Andreas Lordos  
Architects: Ioanna Anastasiadou, Enver Eronen, Christina Kleanthous Papademetriou, Constantina Hadjicosta  
Civil Engineer: Rogiros Illampas  
Archaeologist: Anna Marangou

Date: 07/02/2019 Scale: 1:100  
Revision Date: 19/02/2019 08/04/2019  
28/02/2019 12/04/2019  
27/03/2019 24/06/2019

Drawing Name: Proposed Interventions  
Plan: Level +85.650 - Final

Drawing no.: A-Pr 02









Key Note:

	Masonry		Capping
	10th century masonry		Crack repair and waterproofing of cement-based coating material
	Concrete		Treatment of RC sections
	Brick		Installation of steel tie rods
	Wooden beams		Reconstruction of masonry
	Trace of roof tiles		Removal of floor overlays and replacement of damaged beams
	Vegetation		Demolition of concrete floor
	+Proposed Level		Waterproofing with compatible cement free material
	+Existing Level		

SCALE BAR 1:100  
All measurements on this drawing sheet are in meters.

Courtyard		Block A		Block D	
A/A	Specified Works	Relevant Technical Specification		A/A	Specified Works
YS1	General cleaning	S1. Cleaning of areas	AS1	General cleaning	S1. Cleaning of areas
YS2	Pruning of trees	S26. Gardening works	AS2	Cleaning of floors from organic growth	S2. Control of organic growth
YS3	Replacement of steel supporting structures for vines	S16. Construction of steel structures	AS3	Removal of organic growth from masonry	S2. Control of organic growth
YS4	Cleaning and maintenance of the existing drainage system	S27. Maintenance of drainage systems	AS4	Removal of cementitious and deteriorated plaster	S3. Removal of plaster/ render coatings
YS5	Replacement of well cap	S27. Maintenance of drainage systems	AS5	Replacement of damaged timber lintels	S4. Repair of damaged lintels
YS6	Installation of steel balustrade	S16. Construction of steel structures	AS6	Repair of damaged concrete lintel	S9. Treatment of reinforced concrete sections
YS7	Addition of ramp at the south boundary of the plot for disabled access.	S26. Concrete Work	AS7	Reconstruction of partially collapsed masonry sections	S7. Reconstruction of masonry
			AS8	Repair of cracks by means of reporting, grout injection and/or localized masonry reconstruction	S6. Repeating of masonry
			AS9	In situ treatment of remaining timber members	S5. Treatment of timber sections
			AS10	Construction of capping layer on the upper part of all walls	S8. Construction of capping layer
			AS11	Repeating of masonry throughout	S6. Repeating of masonry
			AS12	Complete covering of floors with layers of granular materials and formation of ground drainage inclinations	S12. Covering of floors with granular material
			AS13	Addition of timber enclosures at the south openings	S24. Timber enclosures
Block B		Block C		Block E	
A/A	Specified Works	Relevant Technical Specification		A/A	Specified Works
BS1	General cleaning	S1. Cleaning of areas	CS1	General cleaning	S1. Cleaning of areas
BS2	Repair of damaged plaster/ render coatings	S3. Removal of plaster/ render coatings	CS2	Removal of organic growth from the floors and the masonry	S2. Control of organic growth
BS3	Painting of interior walls	S2. Control of organic growth	CS3	Removal of organic growth from the masonry	S2. Control of organic growth
BS4	Inspection and maintenance of the roof systems	S14. Replacement of damaged timber beams	CS4	Repair of cracks by means of reporting, grout injection and/or localized masonry reconstruction	S6. Repeating of masonry
BS5	Provision of access to block for the completion of survey	S29. Completion of Survey and Detailed Documentation	CS5	Consolidation of masonry arched section by means of grout injection	S6. Repeating of masonry
BS6	Maintenance of existing Doors and Windows	S33. Maintenance of existing Doors and Windows	CS6	Repeating of masonry throughout	S6. Repeating of masonry
			CS7	Repair of concrete belfry frame	S9. Treatment of reinforced concrete sections
			CS8	Construction of capping layer on the upper part of all walls	S8. Construction of capping layer
			CS9	Replacement of missing floor tiles with similar decorated tiles	S22. Consolidation of historic floors
			CS10	Addition of steel gate enclosure at the arched opening	S23. Steel enclosures
Block F		Block G		Block H	
A/A	Specified Works	Relevant Technical Specification		A/A	Specified Works
FS1	General cleaning	S1. Cleaning of areas	GS1	General cleaning	S1. Cleaning of areas
FS2	Removal of plaster sections that are in danger of collapse	S3. Removal of plaster/ render coatings	GS2	Removal of organic growth from masonry	S2. Control of organic growth
FS3	Removal of organic growth from the floors and the masonry	S2. Control of organic growth	GS3	Repair of cracks by means of reporting, grout injection and/or localized masonry reconstruction	S6. Repeating of masonry
FS4	Repair of cracks by means of reporting, grout injection and/or localized masonry reconstruction	S6. Repeating of masonry	GS4	Replacement of damaged timber and steel lintels	S4. Repair of damaged lintels
FS5	Consolidation of masonry arched section by means of grout injection	S6. Repeating of masonry	GS5	In situ treatment of remaining timber members	S5. Treatment of timber sections
FS6	Repeating of masonry throughout	S6. Repeating of masonry	GS6	Repeating of masonry throughout	S6. Repeating of masonry
FS7	Repair of concrete belfry frame	S9. Treatment of reinforced concrete sections	GS7	Construction of capping layer on the upper part of all walls	S8. Construction of capping layer
FS8	Construction of capping layer on the upper part of all walls	S8. Construction of capping layer	GS8	Addition of steel enclosure at the main west entrance opening	S23. Steel enclosures

Project Title:  
Sorp Magar Monastery Rehabilitation Plan and Conservation Designs

Design:	Name:	Surname:	License no.:
Architect:	Zoe	Lordos	10907
Civil Engineer:	Andreas	Antoniou	71696

Designer Team: Senior Architect: Andreas Lordos  
Architects: Ioanna Anastasiadou, Enver Eronen, Christina Kleinhous Papademetriou, Constantina Hadjicosta  
Civil Engineer: Rogiots Ilampas  
Archaeologist: Anna Marangou

Date:	07/02/2019	Scale:	1:100
Revision Date:	19/02/2019 08/04/2019 28/02/2019 12/04/2019 27/03/2019 24/06/2019		

Drawing Name: Proposed Interventions Plan: Level +95.50, Final	Drawing no.: <b>A-Pr 04</b>
--	--------------------------------



