

4" THICK MASS CONCRETE ROUGH FLOOR
REINFORCED WITH WIRE MESH

6" BLOCK WALL

SAND FILLED

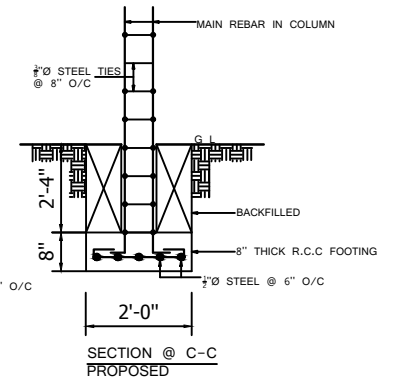
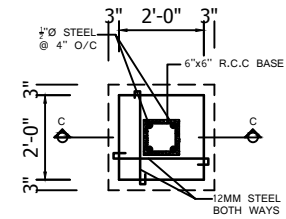
G L

NSL

BACKFILLED

1'-6" x 8" THICK MASS CONCRETE

**SECTION S-S
PROPOSED**



DWG No. 12	PROJECT	RENOVATION OF POLICE DEPOT	REVISED BY	UNDP-LIBERIA	DRAWING TITLE BASE DETAIL
	OWNER	UNDP-LIBERIA	DRAWN BY	UNDP-LIBERIA	
CAT. S	LOCATION	BARCLAYVILLE CITY, GRAND KRU COUNTY	CHECKED BY	XXX	
	DATE	JULY 2019	SCALE	N / A	