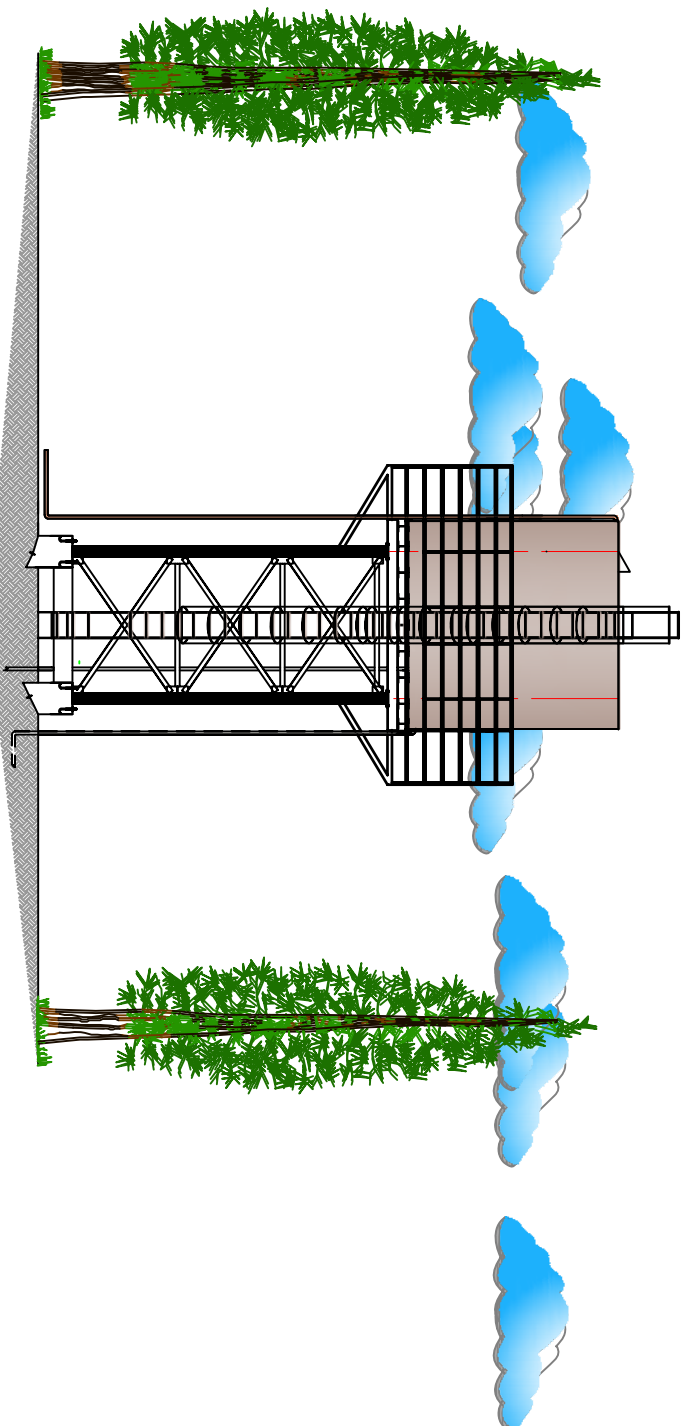
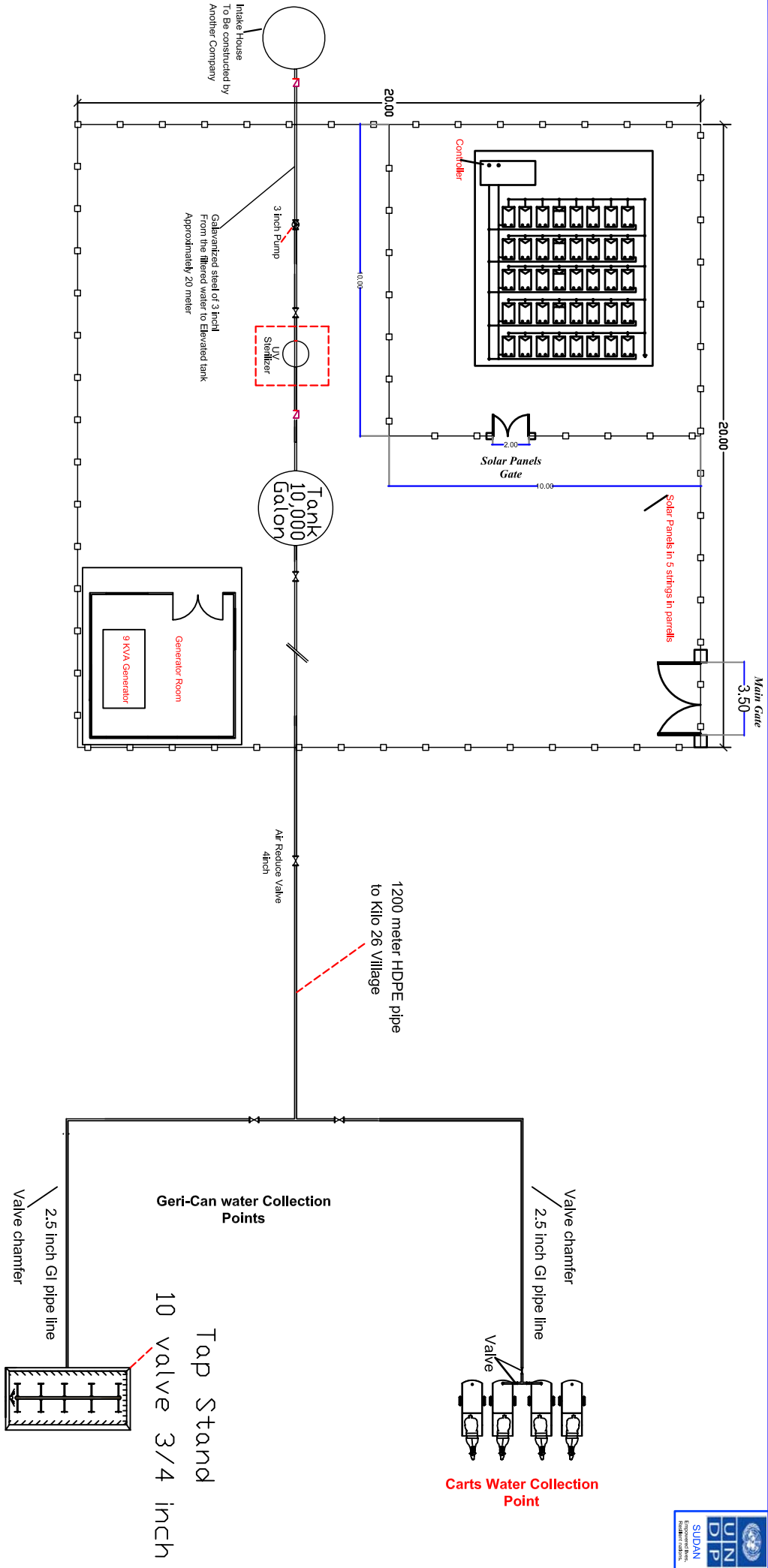




Set of Drawings for Kilo 26 Village Water Yard



Khashm Elgirba Locality-Kassla State



Leged

Type 1 Valve 3/4 inch	
Type 1 Valve 3 inch	
Pump 3 inch	
Non Return Valve	

Master Plan

Project :

Kilo 26 Village Water Yard

Content :

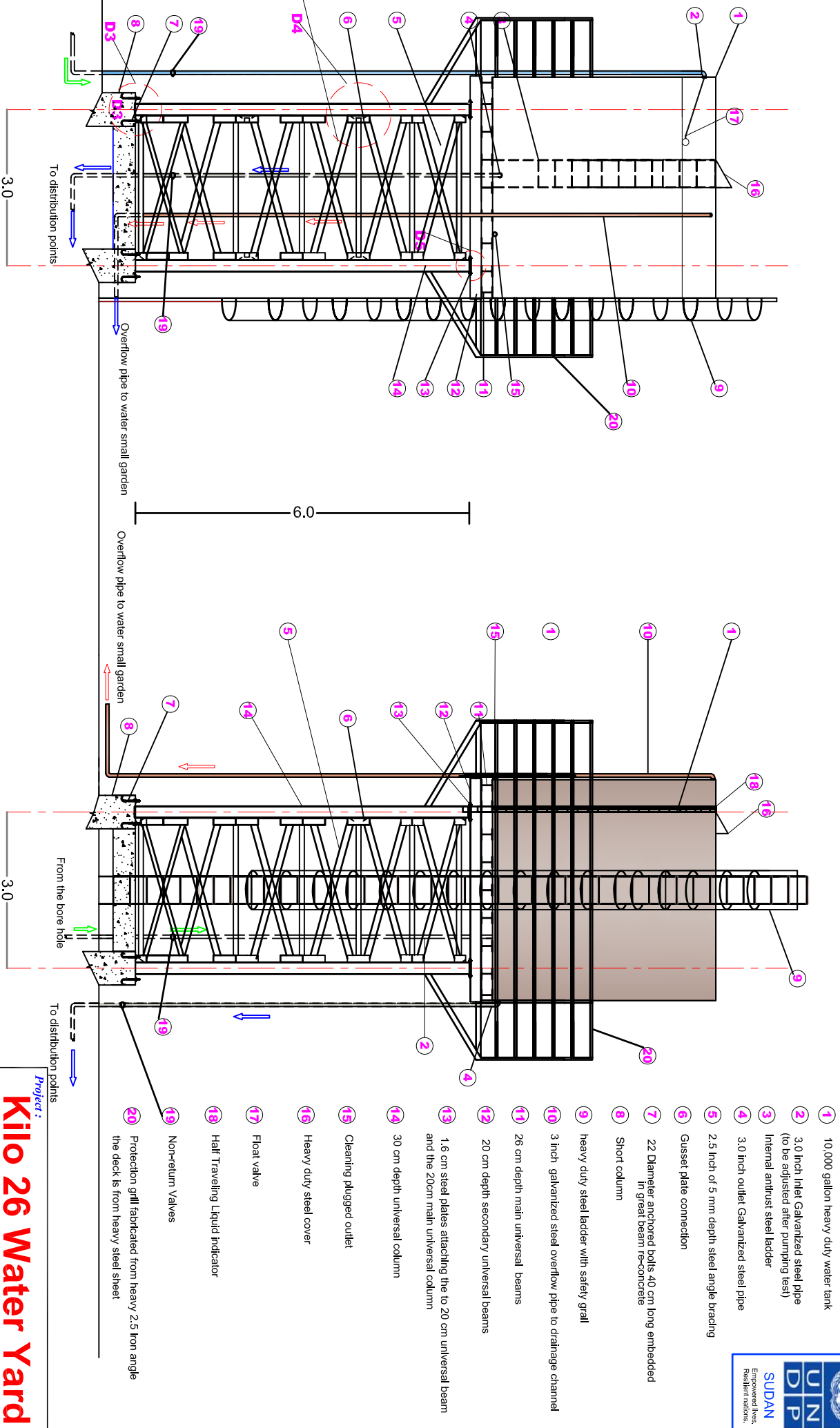
Water Tank Drawings

drawn By:

UNDP

Oct 2019

01



Project :

Killo 26 Water Yard

Content :

Water Tank Drawings

drawn By:

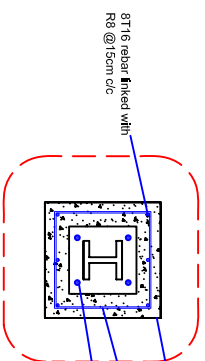
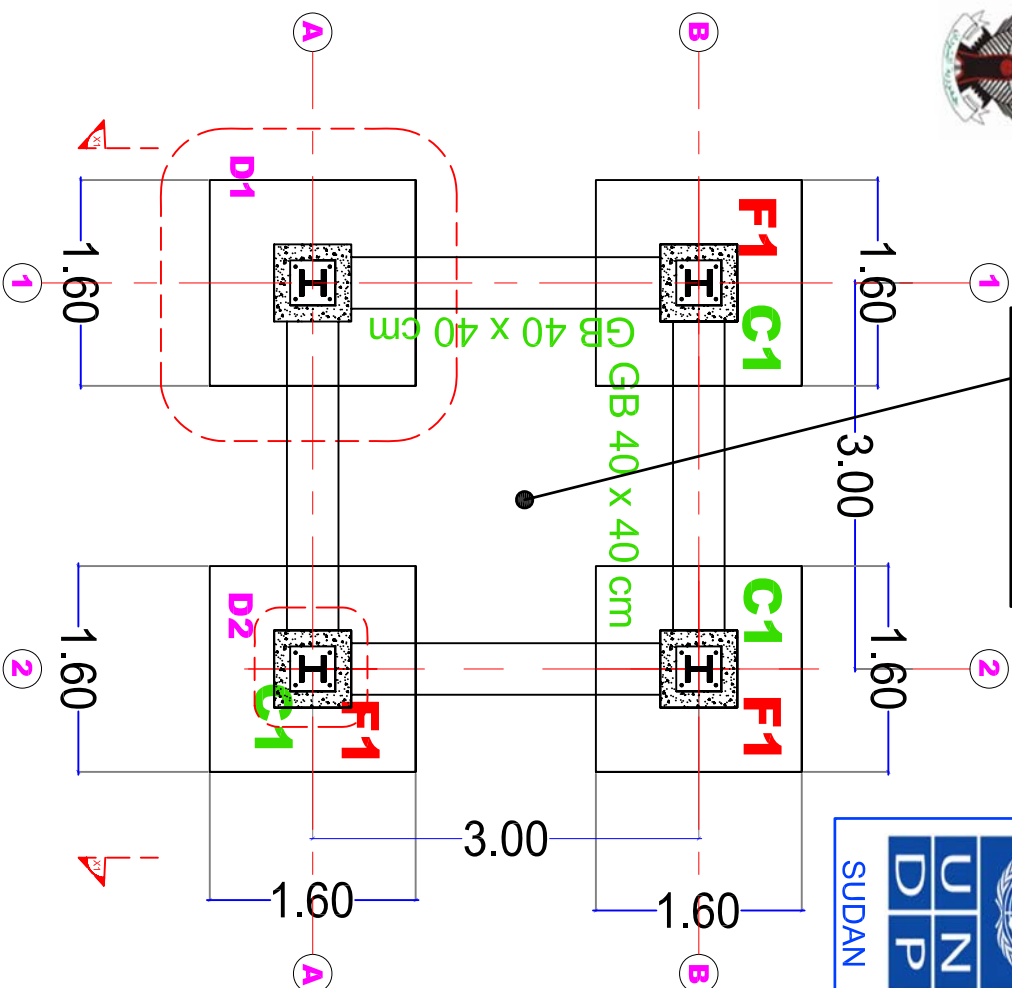
UNDP

Oct
2019

02



The area enclosed by the grid beams shall be filled with blocking and properly compacted and covered with 10 cm plain concrete



60cmx60cm short column
8T16 rebar linked with R8 @ 15cm c/c
22 mm diameter anchored bolts 40 cm long embedded in the concrete 1:2:4 mix.

DETAIL D2

Project:

Kilo 26 Water Yard

Content:

Tank foundation drawings

drawn By:

UNDP

Oct.
2019

03



PLAN
FOOTING PLAN
D2

10T16@150MM C/C BW

10T16@150MM C/C BW

30cm depth universal steel column /stranchion

22mm Diameter anchored bolts 40 cm long embedded in the great beam

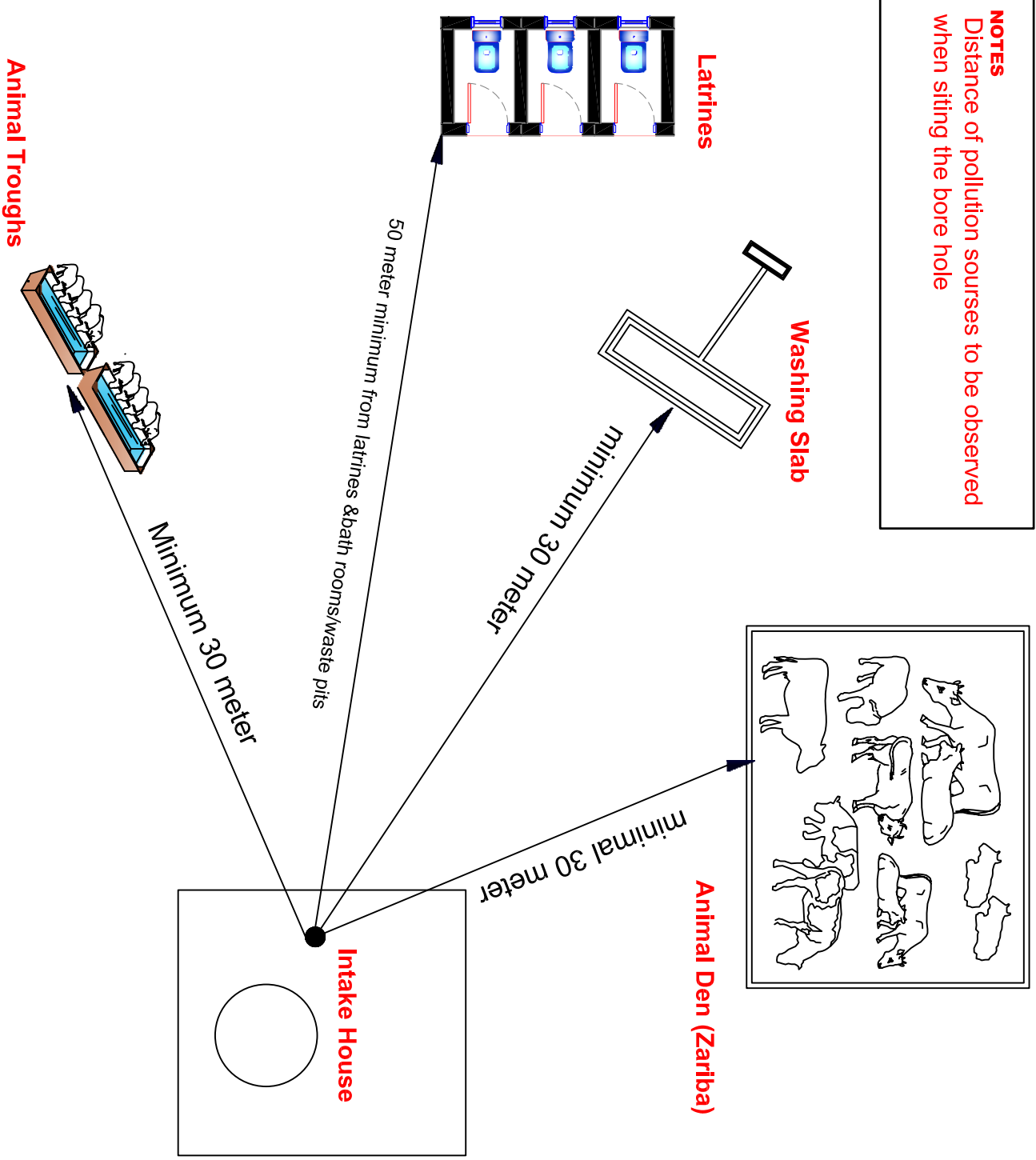
60cm*60cm section short re-concrete short column embedded in the great beam

16mm depth steel plate welded to column /stranchion

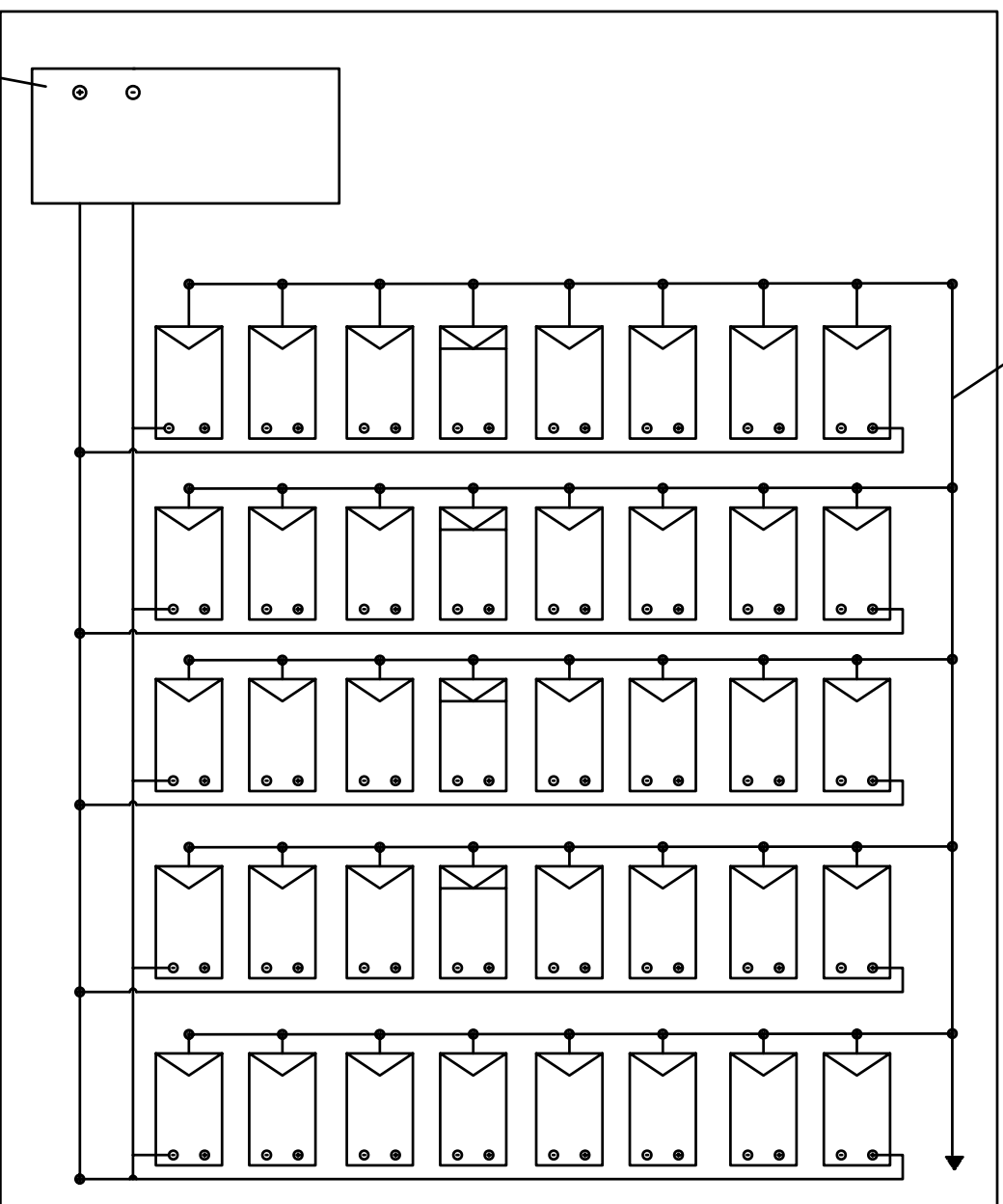
All dimension in centimeter unless otherwise mentioned
The area enclosed by the great beam shall be filled with
backing soil properly compacted and covered with 10 cm plain concrete

04

NOTES
Distance of pollution sources to be observed
when siting the bore hole



Solar Panels in 5 strings in parrells



Controller

Note:

- The solar cell shall be mounted on galvanized stands
- The total output of the solar cells shall decided based on the current loads with margin but should not be less than 4 KVA
- The solar stands shall be fixed with plain concrete footings
- The solar cell be properly installed to manufacturers directions
- All electrical cables shall be through electrical pipes protected and trenched
- Bidder quoting for different arrangement or design has to state so and should provide all necessary information for evaluation

Project :

Kilo 26 Water Yard

Content :

Solar Cells Wiring

drawn By:

Ahmed.M.Adam

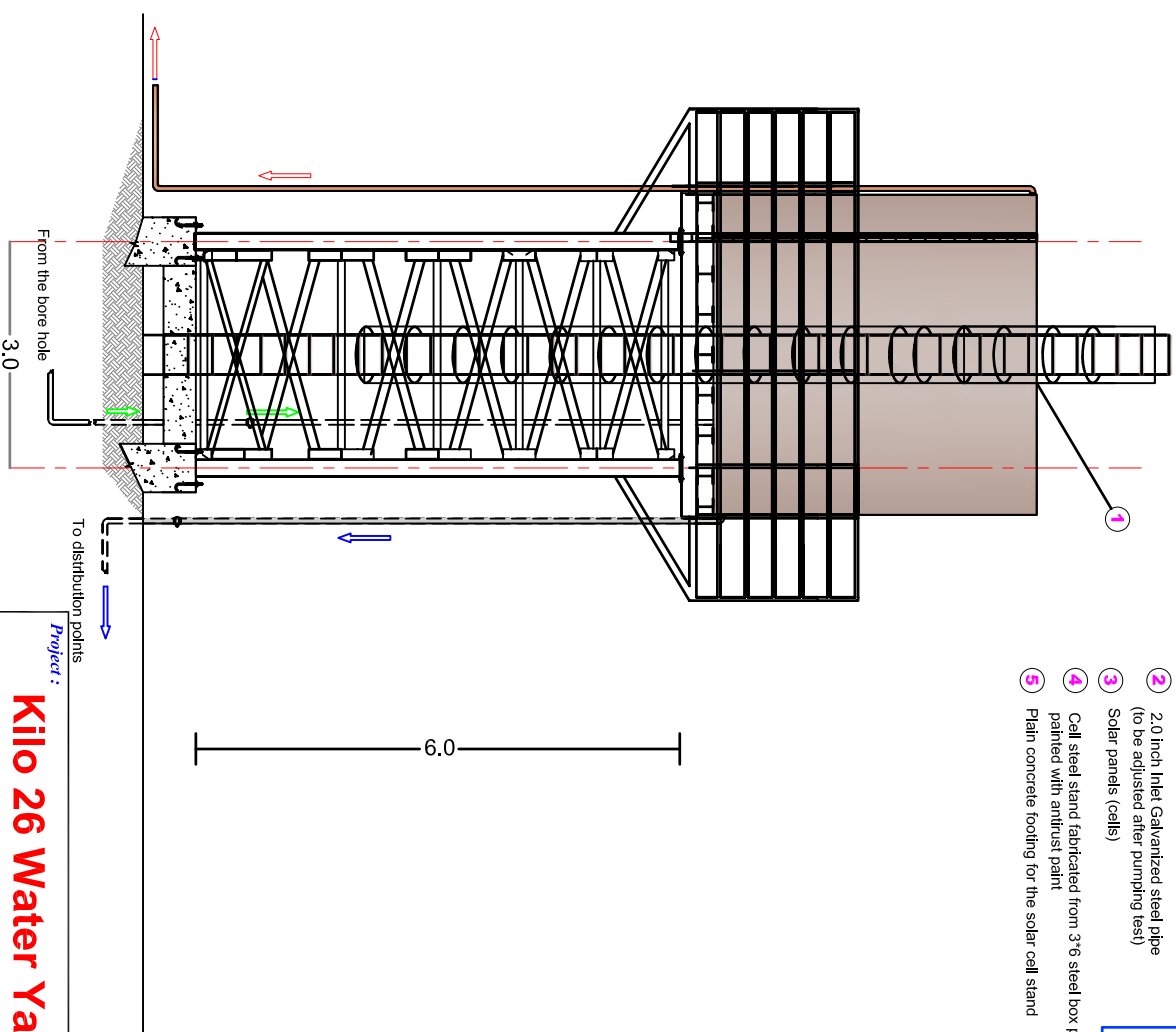
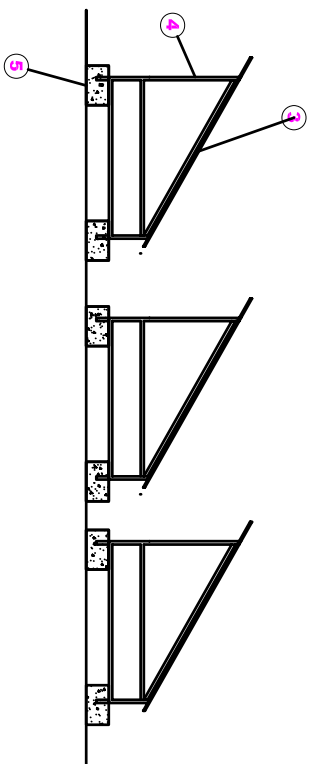
Oct.
2019

07



Note:

- The solar cell shall be mounted on steel / aluminum stands
- The total output of the solar cells shall decided after pumping test but should not be less 3.5KVA
- The solar cell be properly installed to manufacturers directions
- All electrical cables shall be through electrical pipes protected and trenched



- 1 10,000 gallon heavy duty water tank
- 2 2.0 inch Inlet Galvanized steel pipe (to be adjusted after pumping test)
- 3 Solar panels (cells)
- 4 Cell steel stand fabricated from 3"6 steel box pipes painted with anti-rust paint
- 5 Plain concrete footing for the solar cell stand

Project :

Kilo 26 Water Yard

Content :

Water tank drawings

drawn By:

UNDP

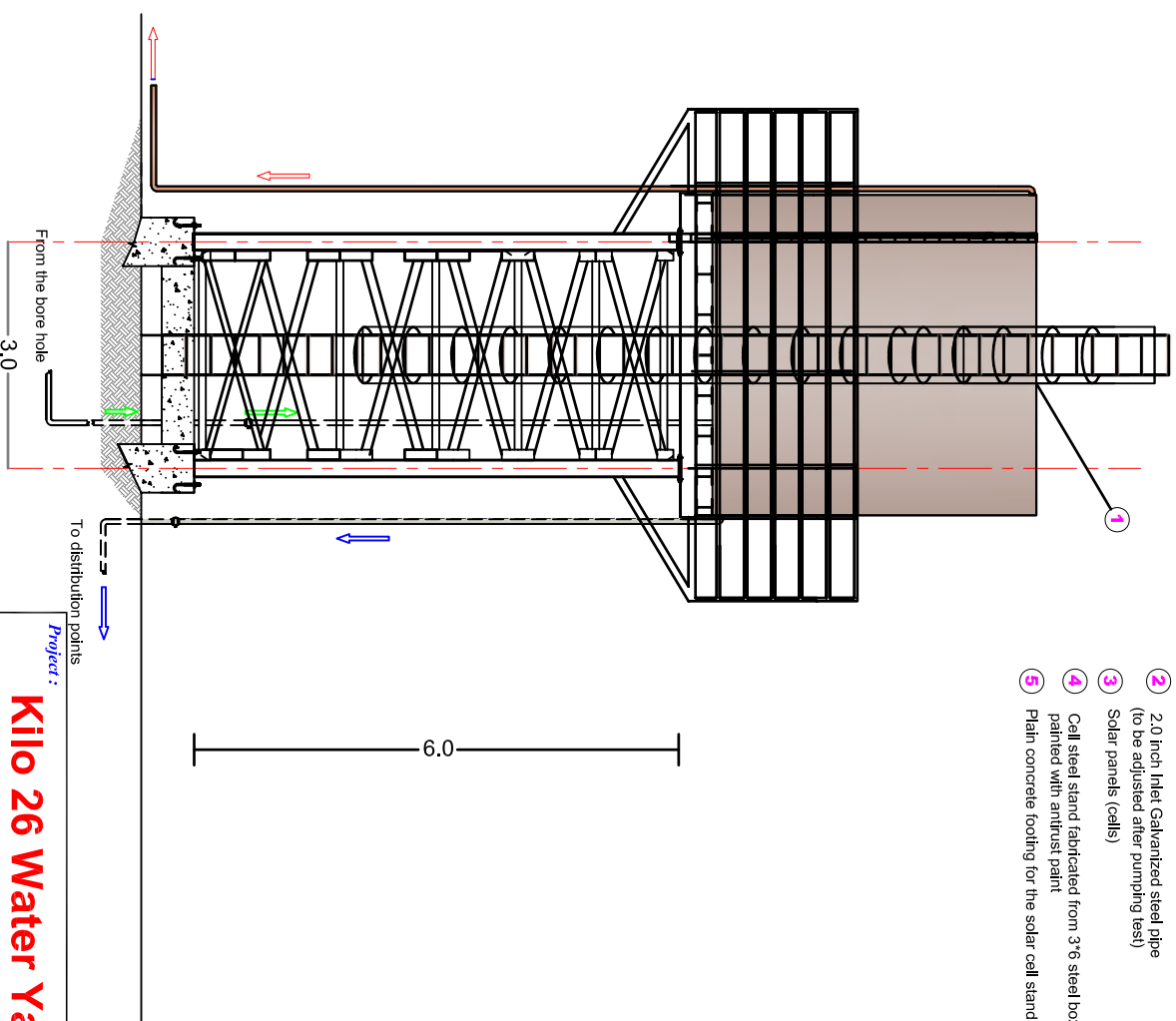
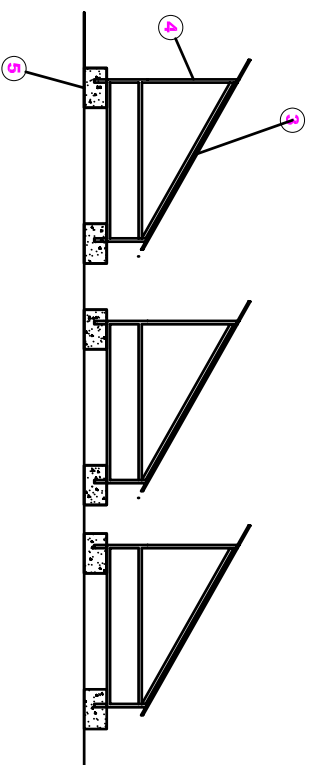
April
2017

08



Note:

- The solar cell shall be mounted on steel / aluminum stands
- The total output of the solar cells shall decided after pumping test but should not be less 3.5KVA
- The solar cell be properly installed to manufacturers directions
- All electrical cables shall be through electrical pipes protected and trenched



- 1 10,000 gallon heavy duty water tank
- 2 2.0 inch Inlet Galvanized steel pipe (to be adjusted after pumping test)
- 3 Solar panels (cells)
- 4 Cell steel stand fabricated from 3/6 steel box pipes painted with anti-rust paint
- 5 Plain concrete footing for the solar cell stand

Project :

Kilo 26 Water Yard

Content :

Water tank drawings

drawn By:

UNDP

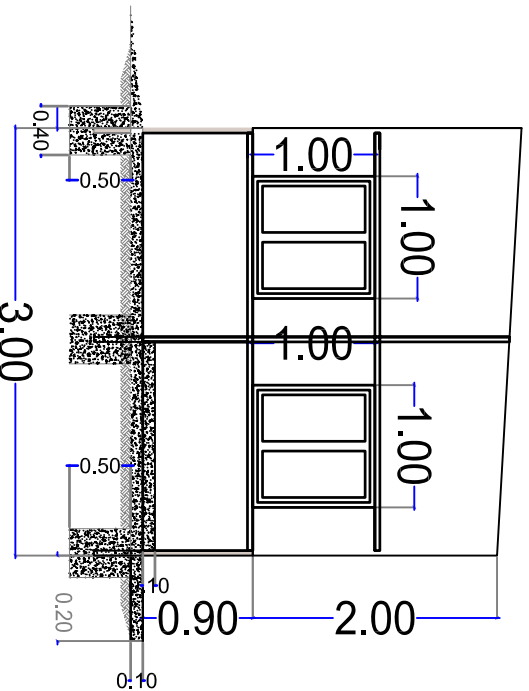
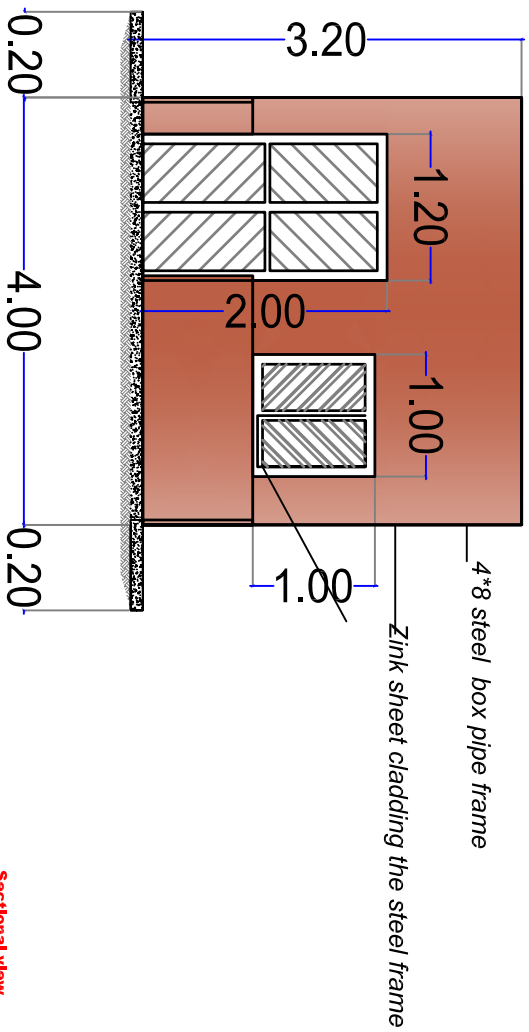
April
2017

08

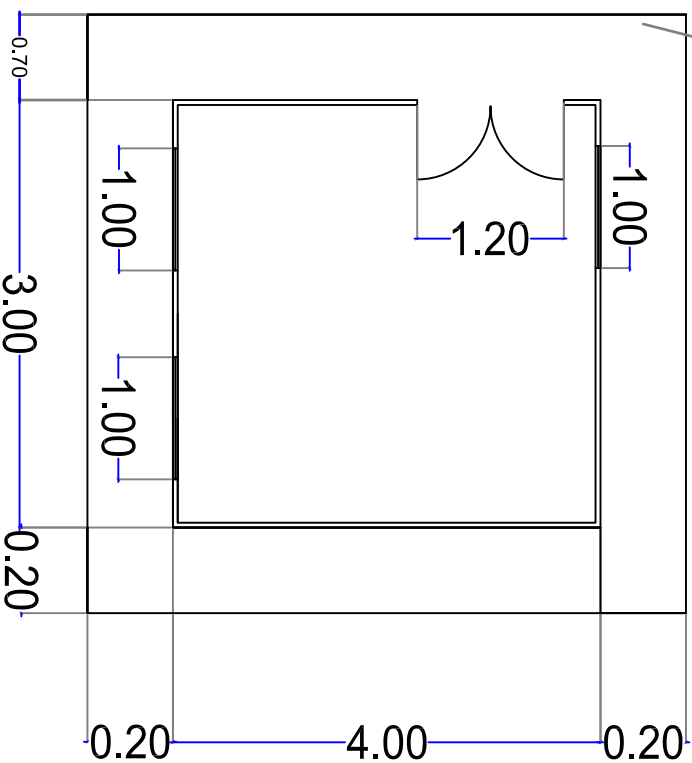


All steel frames shall be painted with anti-rust paints





10 cm depth platform of plain concrete



Project :
Kilo 26 Water Yard

Content :
Generator Room

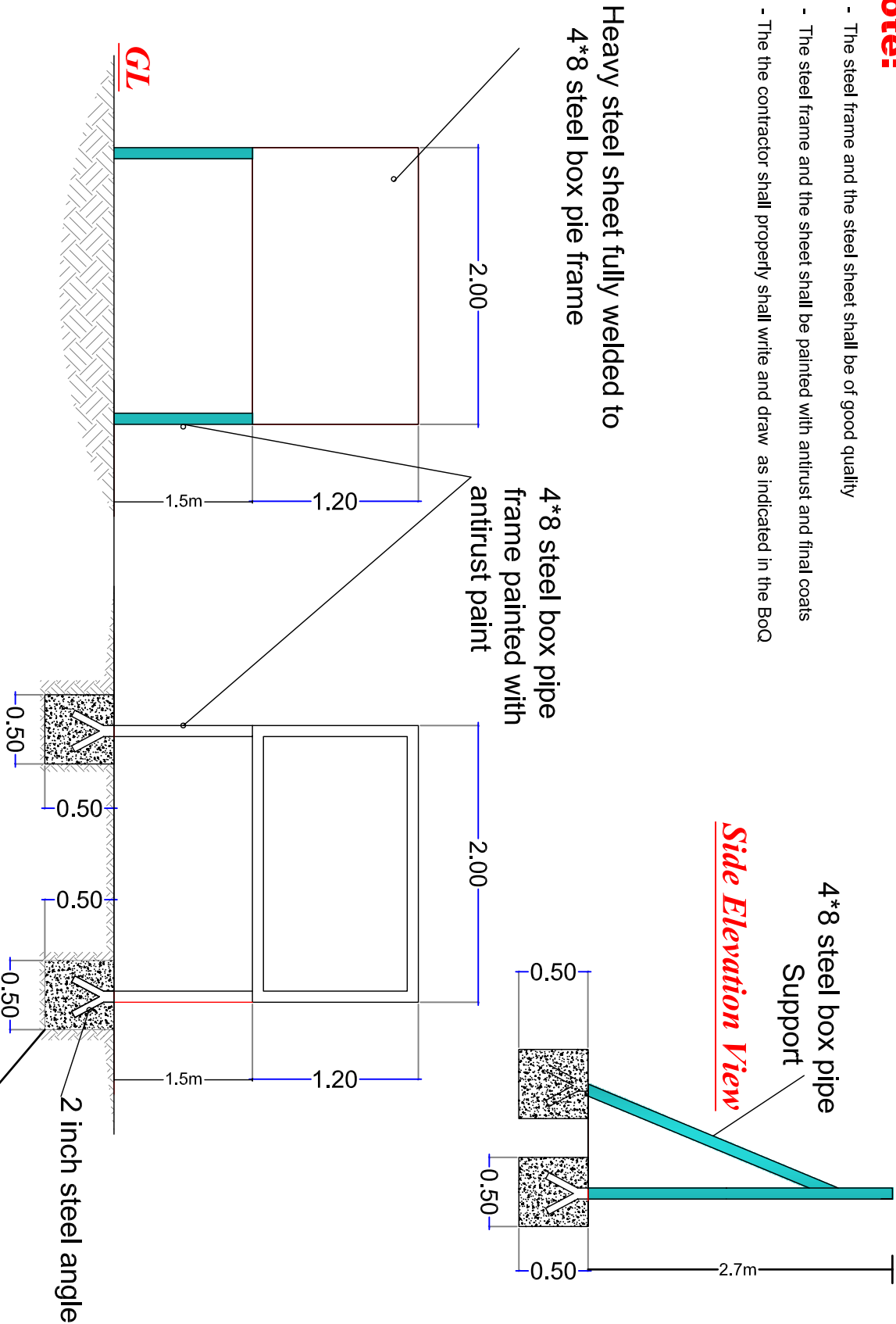
drawn By:
UNDP

Oct
2019

11

Note:

- The steel frame and the steel sheet shall be of good quality
- The steel frame and the sheet shall be painted with antirust and final coats
- The contractor shall properly write and draw as indicated in the BoQ



GENERAL:
1- All steel members shall be of good quality heavy steel (Black type),
2- all steel members shall be painted with antirust paints and final coats
3- the plain concrete is of 1:3:6 mix and shall be treated properly with water
4- All dimensions are in meter unless otherwise stated

Project Name:

Kilo 26 Water

Content:

Sign Broad Details

Designed by:

UNDP-ODR

2019

Drawn By:

Ahmed M. Adam

12