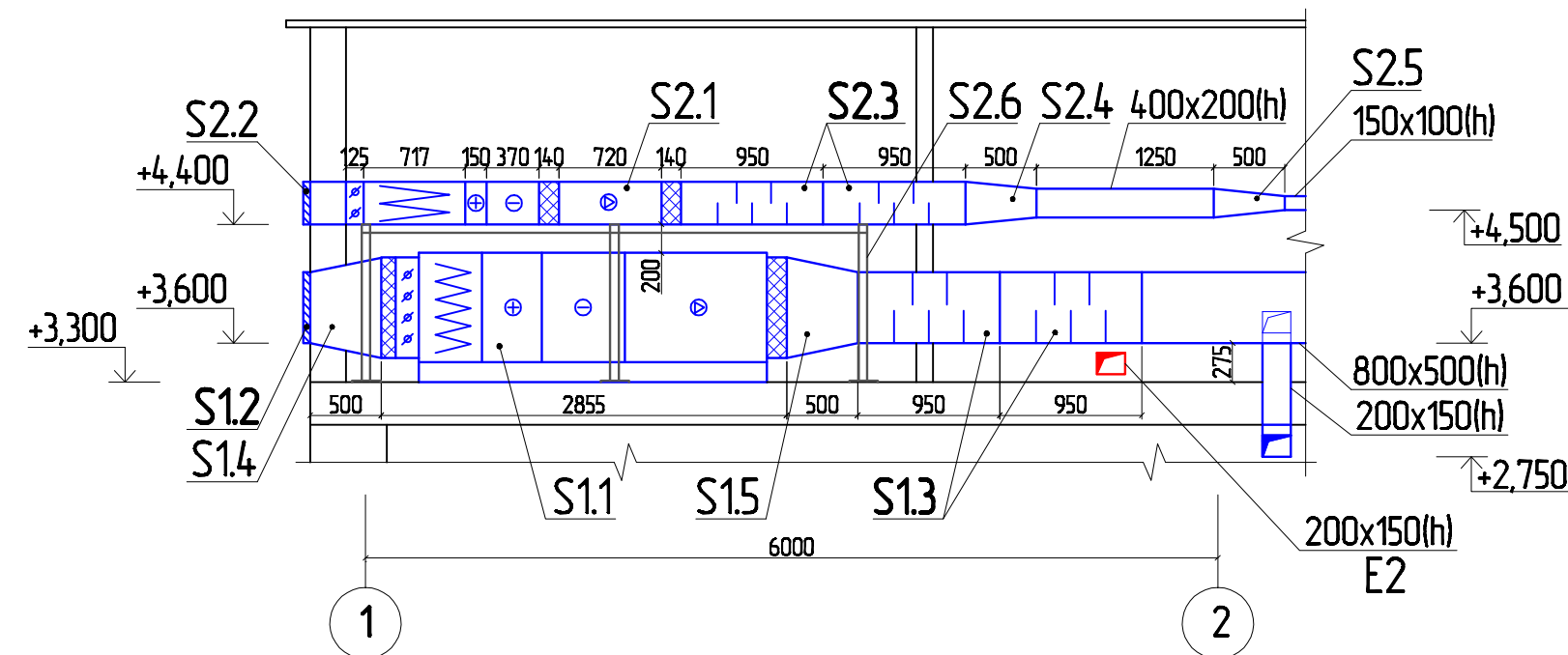
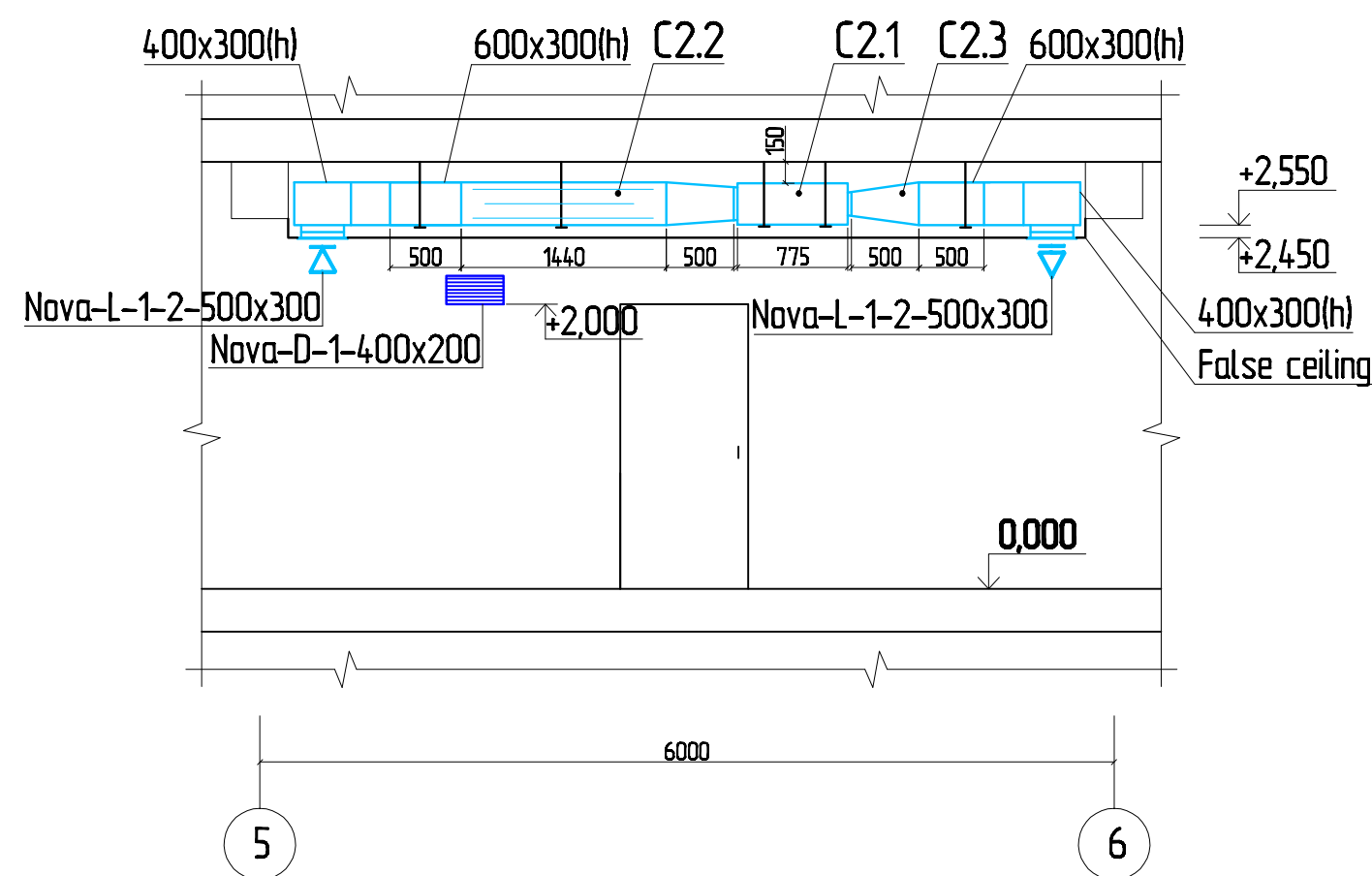


Sectional drawings 1-1



Sectional drawings 2-2



Notes

1. Level of the 2nd floor is taken for 0.000 mark.
2. Air ducts in supply and air conditioning systems are insulated with heat-insulating material 5 mm thick to prevent condensate formation.
3. To provide for condensate removal into the sewage system of the building for internal block of C1 and C2. External blocks are to be placed on the building wall.
4. To provide for false ceiling at the installation site of channel air conditioners. To allow for service doors for the access to internal units of C1 and C2 systems and sections of bactericidal air treatment.
5. To provide bearing mounts and hangers for the air ducts and equipment of supply and exhaust systems.
6. To provide for condensed water removal from air cooler for supply plants of S1 and S2.
7. * - sizes of hoods depend on dimensions equipments.

Specification of equipment

Brand, item	Code	Type	Num-ber	Units of weight,kg	Note
		<u>System S1</u>			
S11	VSC-S-5-GSF4H3C2VsG-R	Supply plant (right-hand unit), including:	1	348.0	
	ER40C	Fan	1		380V/3ph
		n=1978 rpm, N=15 kW			
		Flexible insert 895x710	1		
		Air valve 895x710	1		elec.drive
		Filter	1		G4
		Electric air heater	1		380V/3ph
		Freon air cooler	1		3/4",1 1/2"
		Flexible insert 915x710	1		
S12	PZAL-800x500-S	External grille 800x500	1		
S13	LDR 80-50	Silencer 800x500	2	34.0	l=950mm
S14		Transition 800x500/895x710*	1		l=500mm
S15		Transition 915x710/800x500*	1		l=500mm
		<u>System S2</u>			
S2.1		Assembled supply plant (right-hand unit), including:	1		
	VKV 600x300 4.3/380	Duct fan	1	31.4	380V/3ph
		n=1415 rpm, N=17.4 kW			
	VKG 600x300	Flexible insert 600x300	2		l=140mm
	VKG(A) 600x300	Air valve 600x300	1		elec.drive
	VKF(K) 600x300	Pocket filter 600x300	1	11.0	G4
	VKH-E 600x300/15	Electric air heater	1		380V/3ph
	VKKC-F 600x300	Freon air cooler	1		
S2.2	PZAL-600x300-S	External grille 600x300	1		
S2.3	LDR 60-30	Silencer 600x300	2	21.0	l=950mm
S2.4		Transition 600x300/400x200	1		l=500mm
S2.5		Transition 915x710/800x500*	1		l=500mm
S2.6		Bearing frame 3500x1250	1		h=1100mm
		<u>System C2</u>			
C2.1	GFH42K3BI	Internal block channel air conditioning	1	54.0	
		Qcool.=12.0 kW, Qh=14.0 kW			
C2.2	SBOW 60-30/77	Bactericidal air treatment section 600x300x1440(l)	1		8UVlamps
C2.3		Transition 820x160/600x300*	1		l=500mm
C2.4		Transition 980x231/600x300*	1		l=500mm