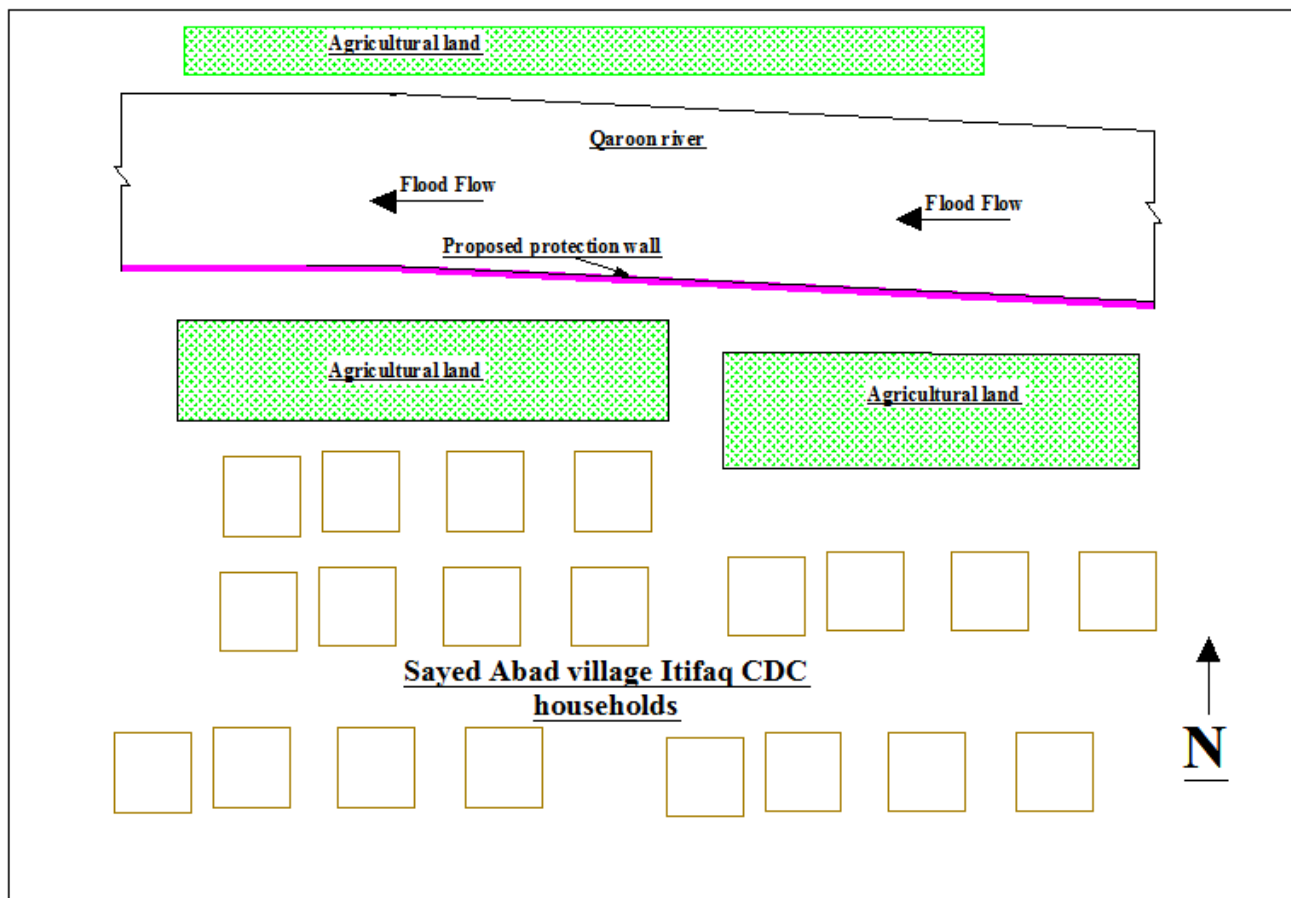
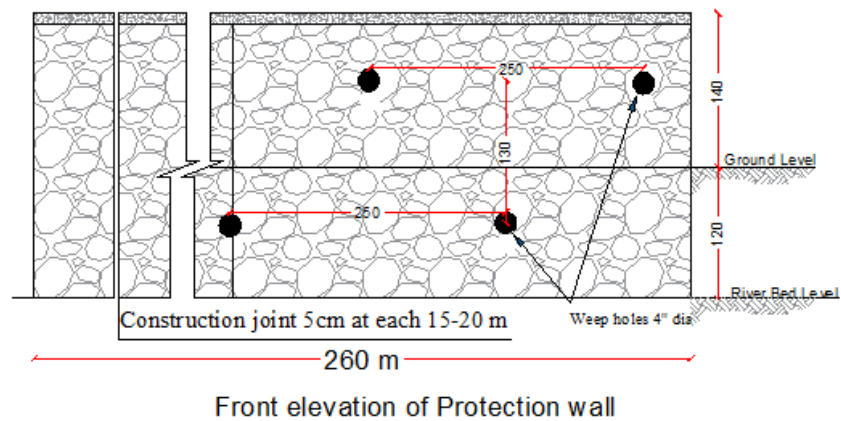
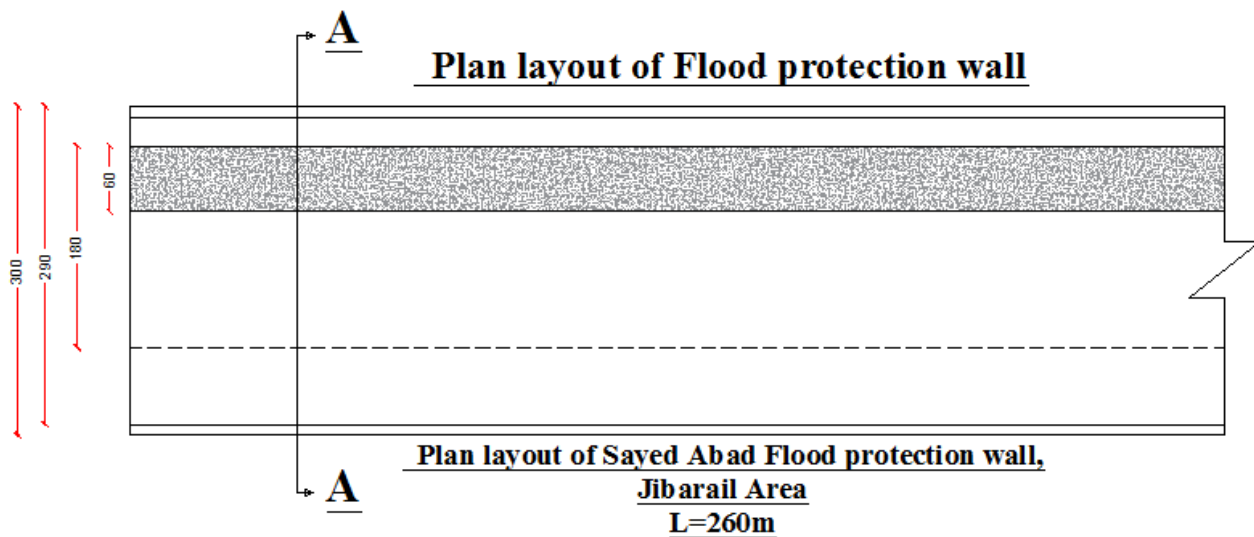


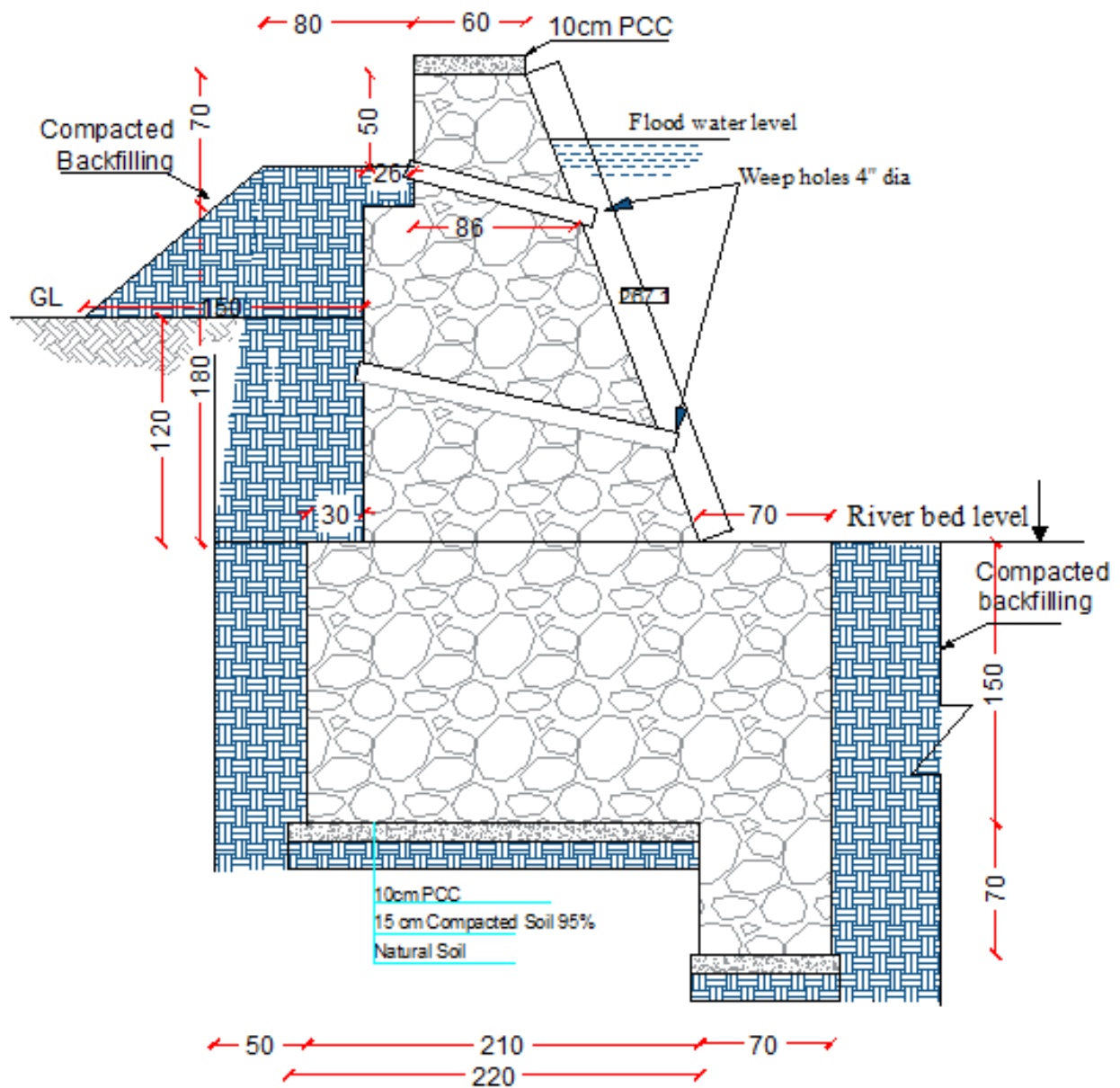
Annex C: Drawings and technical details

Site Plan
Sayed Abad flood protection wall



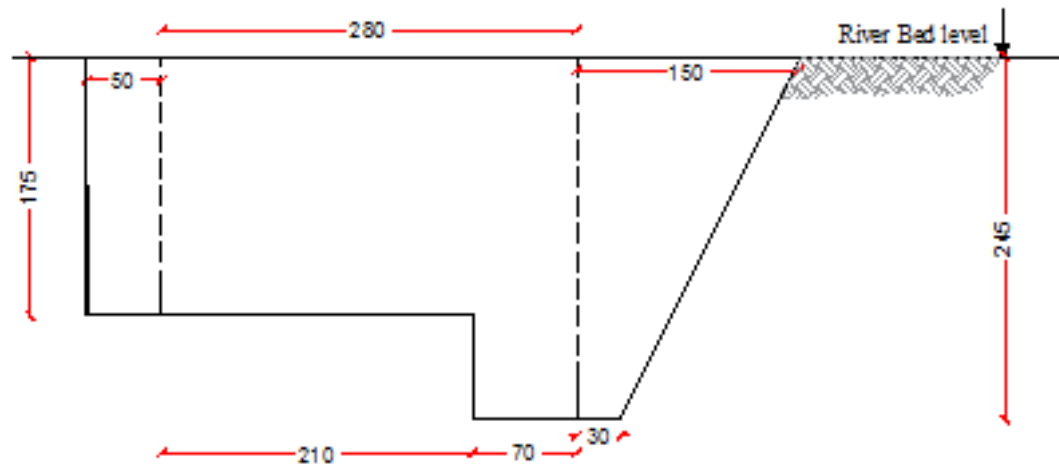


Section A-A



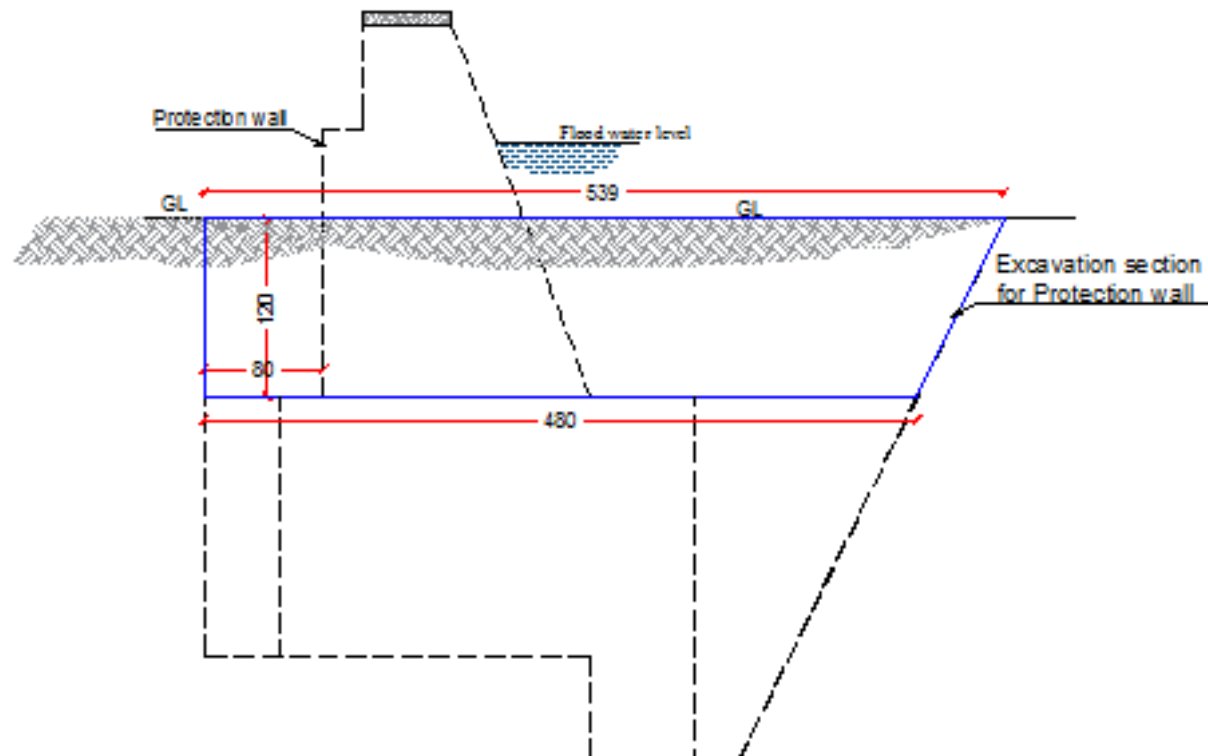
**Typical Cross section Protection wall, Sayed Abad,
Jibarail Area , L=260m**

Section of Excavation for foundation

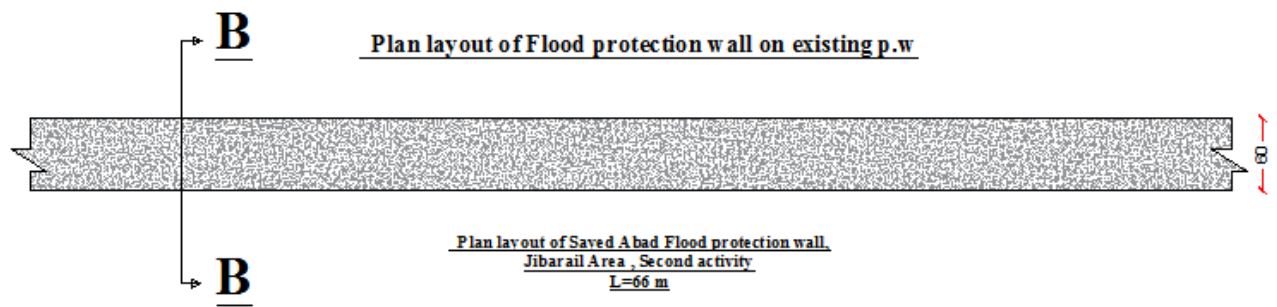


Typical Cross section for Foundation excavation of
Protection wall, Saved Abad, Jibarail Area , L=260m
A=8.46 sqm

Section of Excavation for protection wall



Cross section for excavation of Protection wall Saved
Abad, Jibarail Area , L=80m
A=6.11 sqm



Section B-B

