



## Statement of Work

Chain Link Fence

## 1 Chain Link Fence:

### 1.1 Site Preparation:

The Contractor shall prepare the Site around the construction area. The site will be prepared according to the Task Force Specification PART 2 Site Preparation.

### 1.2 Posts and Braces:

The posts spacing and configuration shall be per Chain Link Fence Site Plan and Details. When barbed wire and concertina wire are desired on the fence each post shall have equally spaced outriggers. Braces shall be used in each bay adjacent to the corner posts. Braces shall be used on each swing gate door. Braces and posts shall be of 7.5 cm (3 in) diameter pipes. The base metal shall be weldable steel of commercial quality, or better. The steel shall be galvanized or have an equivalent protective coating. The post shall be set in concrete foundation with diameter of 30.5 cm (12 in) and 61 cm (24 in) deep. The minimum embedment length for the posts shall be 50 cm (18 in). The concrete will be placed according to the Task Force Specification PART 3 Concrete.

### 1.3 Fence Fabric:

The fence fabric shall be 4 mm (9-gage/0.148 in) diameter that is woven into approximately 5 cm (2 in) mesh such that there shall be at least 7 meshes in a vertical dimension of 58.5 cm (23 in) along the diagonal of the openings. The fence fabric shall have knuckled finish on the top and bottom edges. The fence fabric shall be stretched and securely fastened to corner posts with stretcher bars having dimensions of not less than 0.6 cm x 1.9 cm (1/4 in x 3/4 in) and stretcher bar bands having dimensions of not less than 0.3 cm x 1.9 cm (1/8 in x 3/4 in) spaced at 30.5 cm (12 in) intervals. The fence fabric shall also be fastened to intermediate posts with tie wires or post clips and to tension wires with tie wires or hog rings. The fasteners shall be spaced at approximately 35.5 cm (14 in) on intermediate posts and at approximately 50 cm (18 in) on tension wires. Tie wires and hog rings shall be at least 4 mm (9-gage/0.148 in) diameter steel and post clips shall be at least 5 mm (6-gage/0.192 in) diameter steel. Wire ties shall be given at least one complete turn. Hog rings shall be closed with ends overlapping. The tension wires shall be wrapped around end posts. The distance from the top of the fabric to the top tension wire and from the bottom of the fabric to the bottom of the tension wire shall be 75 mm (3 in) maximum. The tension wires shall be at least 0.5 cm (6-gage/0.192 in) diameter coil spring steel. Tension wires shall be stretched tight. The bottom tension wire shall be installed on a straight grade between posts by excavating the high points of ground and in no

case will filling of depressions be permitted. All tension wire, tie wires, hog rings and post clips shall be of good commercial quality and shall be galvanized or be coated with an equivalent protective coating according to Task Force Specification PART 5 Metals.

#### 1.4 Swing Gate:

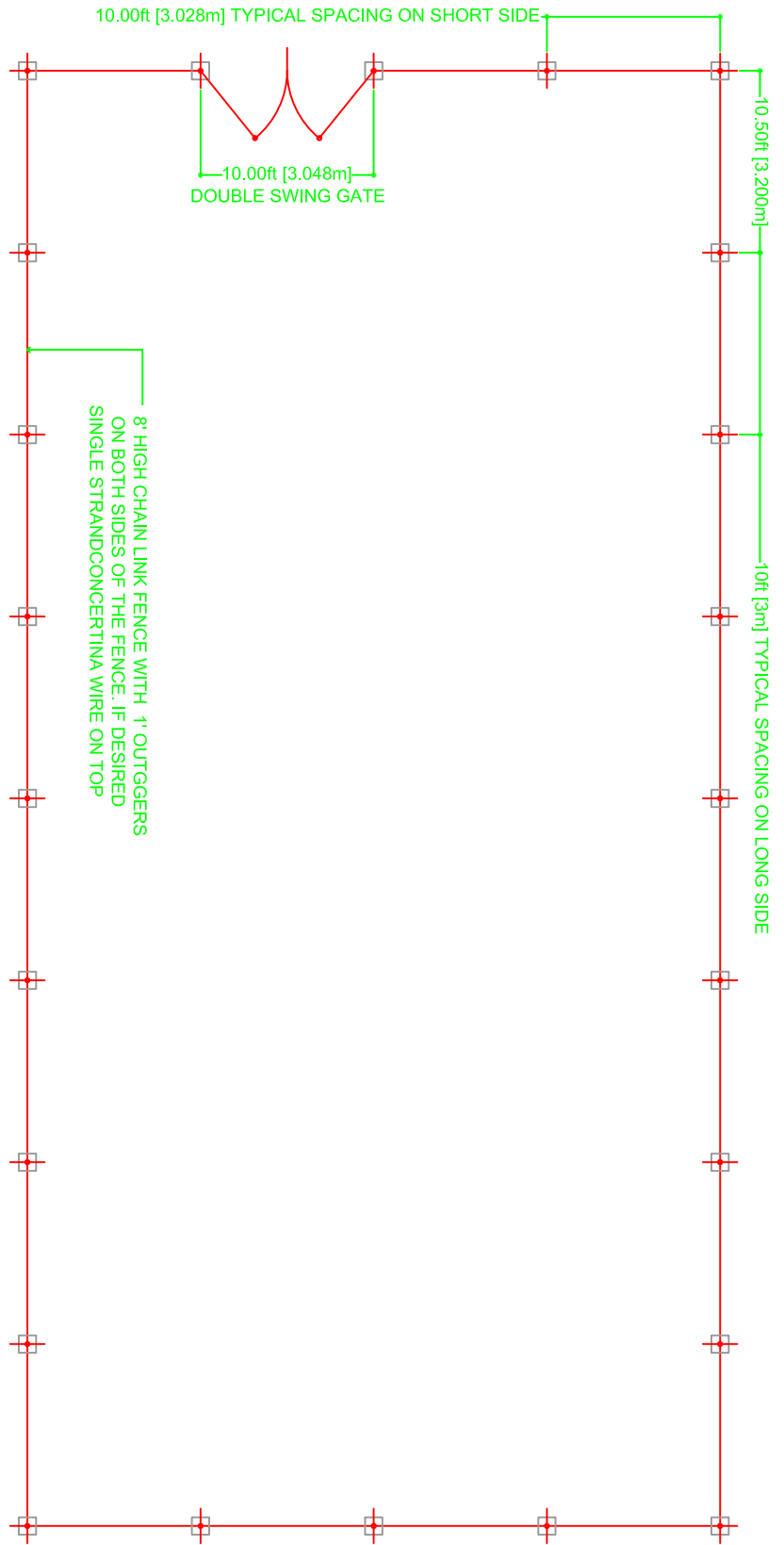
If a swing gate is desired, it shall be fabricated from 5 cm (2 in) diameter weldable steel and be galvanized or has an equivalent protective coating. Each gate section shall be hung by at least 2 steel hinges not less than 13 cm (5 in) in width, so designed as to securely clamp to the gate post and permit the gate to be swung back against the fence. The bottom hinge shall have a socket to take the ball end of the gate frame. Fence fabric shall be welded to the frame. The swing gate shall have a commercial grade steel lock clasp.

# Chain Link Fence

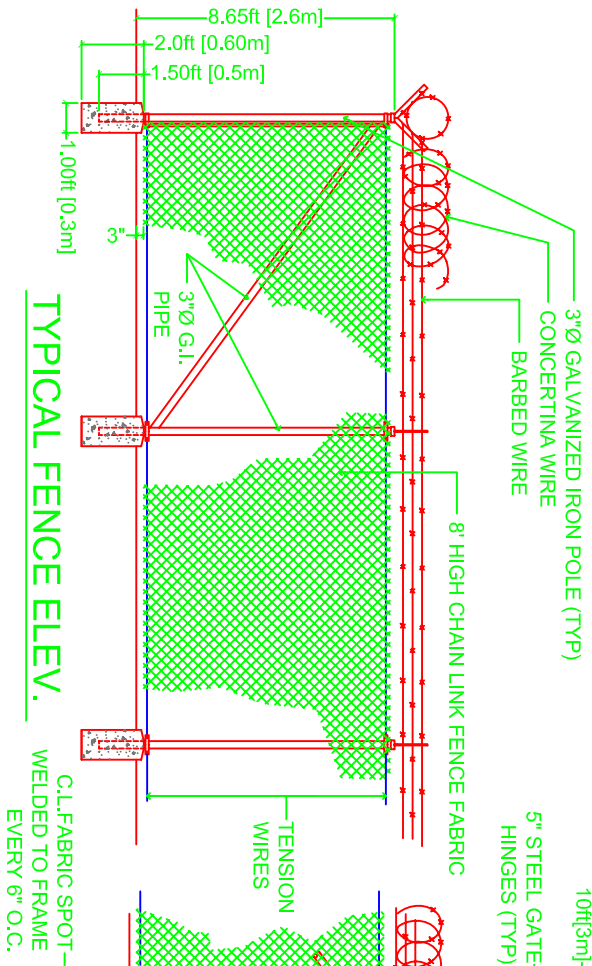
## TABLE OF CONTENTS

TITLE PAGE  
FENCE PLAN

SHEET 1  
SHEET 2



## FENCE PLAN



## TYPICAL FENCE ELEV.

## GATE DETAIL

## OUTRIGGER DET.

STEEL GATE LOCK

G.I. CAP ON ALL POLES (TYP)

1/4" x 2" FLAT BAR WITH 3 GROOVES SPACED EQUALLY

1/4" x 2" x 18" FLAT BAR SPOT WELDED TO FRAME W/ 4-STRAND BARB WIRE (TYP)

5" STEEL GATE HINGES (TYP)

10ft [3m]

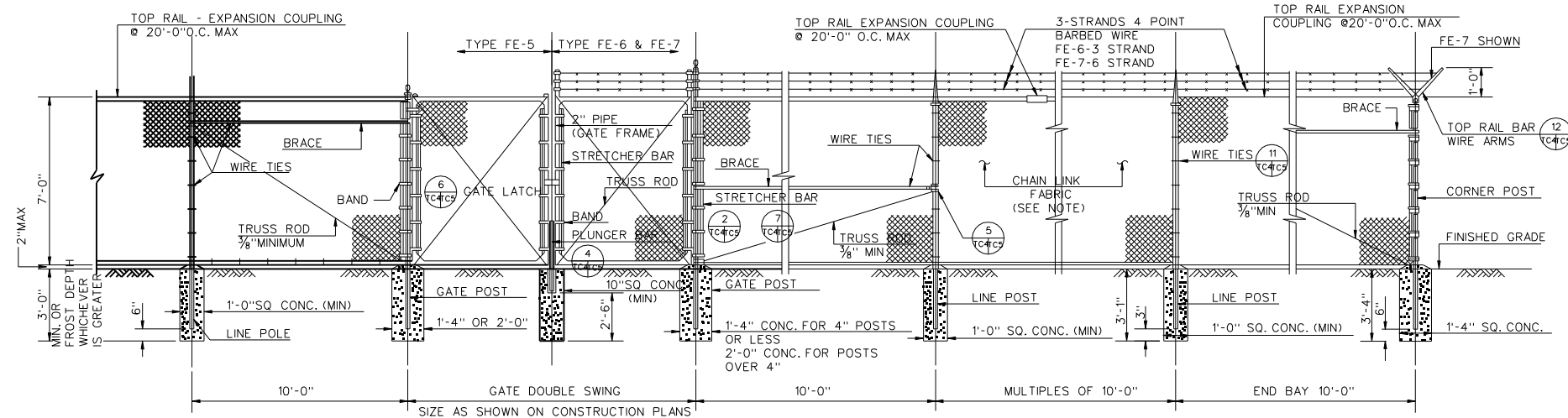
LOCATION NAME:  
AFGHANISTAN

PROJECT NAME:  
CHAIN LINK FENCE

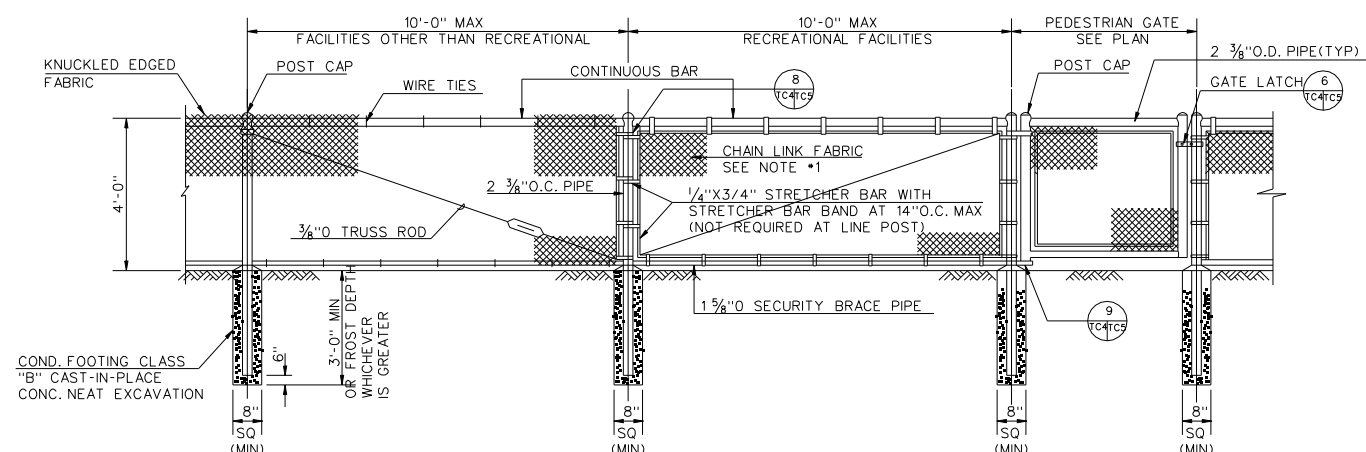
SHEET:  
FENCE PLAN

DESIGNED BY: GPU  
DRAWN BY: GPU  
QA / CC BY: NMP  
DATE DRAWN: 30 July 07

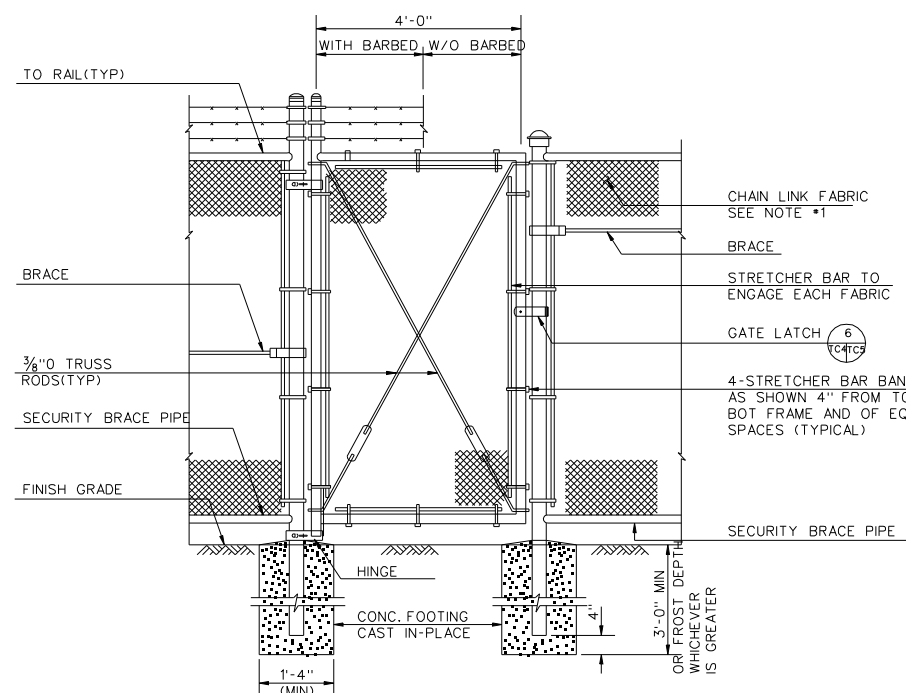
SHEET: 2/2



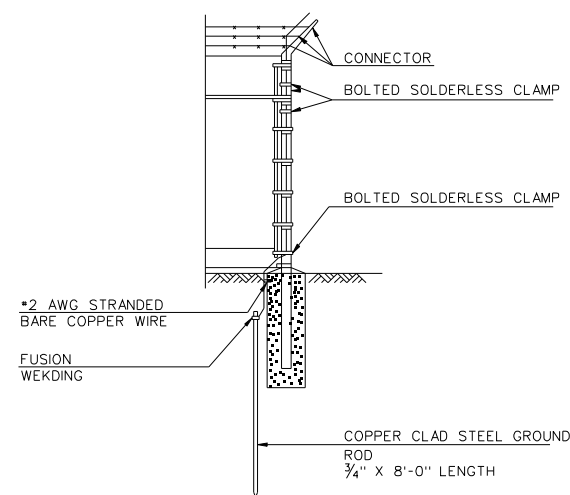
1 TC4  
PC2/TC4  
7FT CHAIN LINK FABRIC FENCE : TYPES FE-5,FE-6 AND FE-7  
NOT TO SCALE



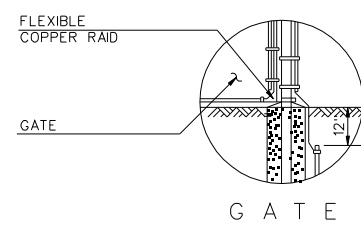
2 \*C4  
RC2/TC4  
4FT CHAIN LINK FABRIC FENCE  
NOT TO SCALE



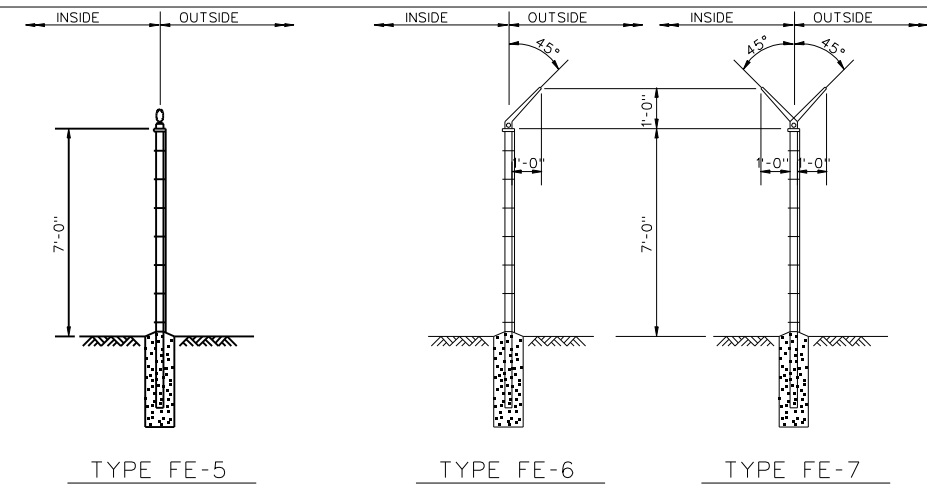
3 3/6A  
TC4/TC4  
PEDESTRIAN GATE  
NOT TO SCALE



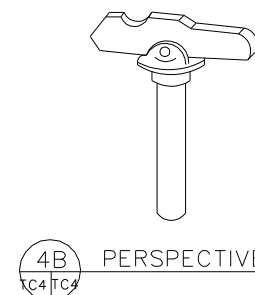
FENCE CORNER



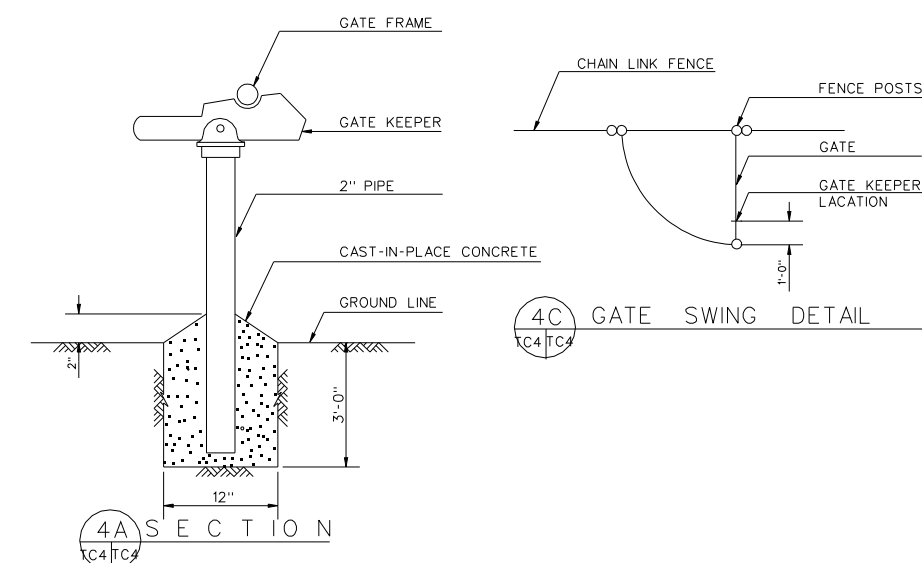
5 \*\*  
TC4/TC4  
GROUNDING DETAILS  
NOT TO SCALE



1A \*C4  
TC4/TC4  
TYPICAL LINE POST DETAIL  
NOT TO SCALE



4B  
TC4/TC4  
PERSPECTIVE



4A  
TC4/TC4  
SECTION

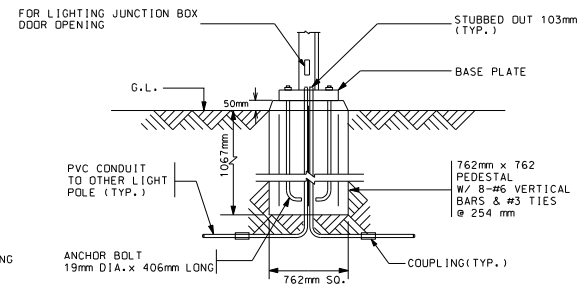
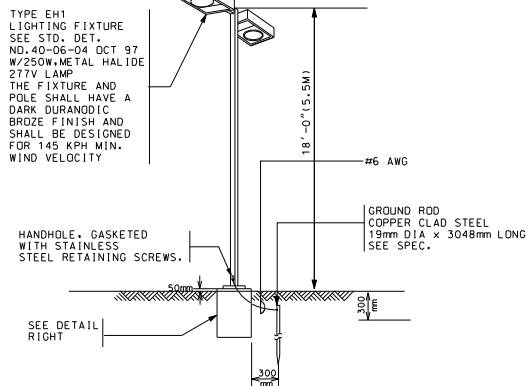
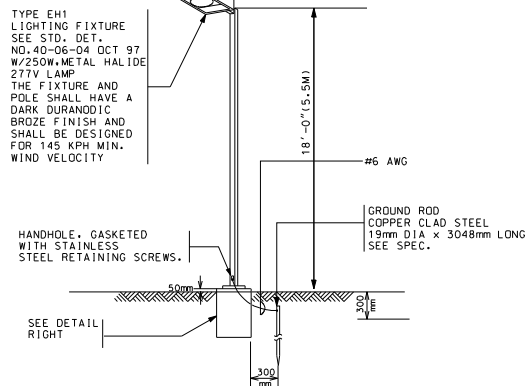
4C  
TC4/TC4  
GATE SWING DETAIL

4 3/6A  
TC4/TC4  
GATE KEEPER DETAILS  
NOT TO SCALE

# NOTES

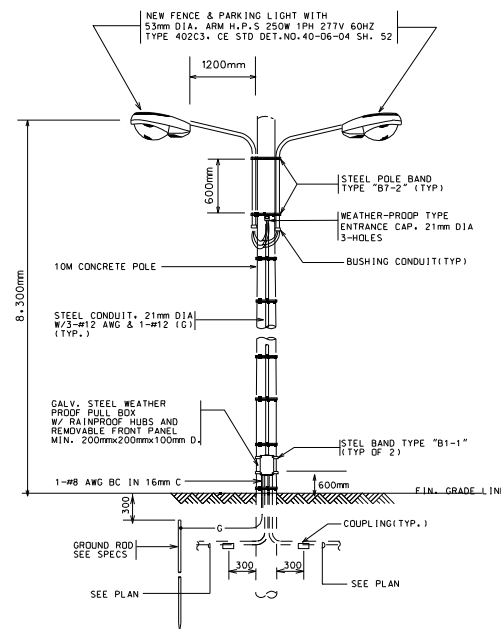
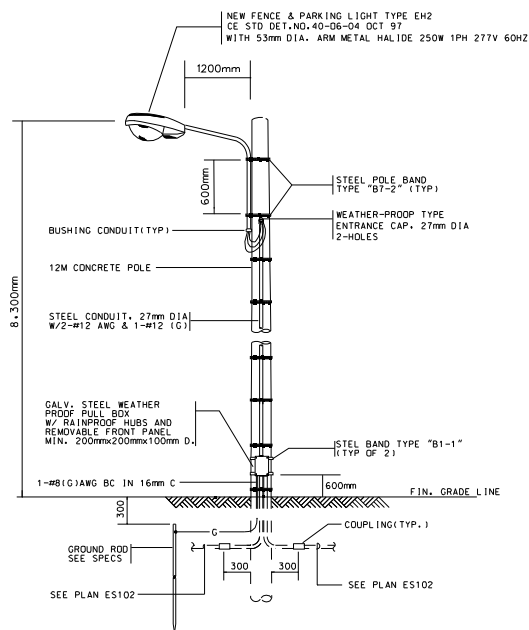
- ALL FABRIC SHALL BE #9 GAGE WOVEN IN A 2" MESH.
- SINGLE EXTENSION ARMS SHALL POINT OUTWARD AND INWARD AT 45° ANGLES. ALL EXTENSION ARMS TO BE 12 GAGE PRESSED STEEL.
- SEE CONSTRUCTION PLANS FOR TYPE OF FENCE, LOCATION, AND SIZE OF GATES
- ALL THREADED ENDS OF FENCE CONNECTOR BOLTS SHALL BE PEENED
- FENCE GROUNDING
  - ALL FENCES SHALL BE GROUNDED AT EACH TERMINATION, EACH CORNER (EXCEEDING 60°), EACH SIDE OF EACH GATE, AND AT 1,000 FOOT INTERVALS
  - FENCE CROSSED BY PRIMARY POWER LINES IN EXCESS OF 600 VOLTS SHALL BE GROUNDED AT A POINT DIRECTLY BELOW THE CROSSING AND 150' ON EACH SIDE OF CROSSING.
  - FENCES PARALLEL TO OR WITHIN 100' OF A PRIMARY POWER LINE IN EXCESS OF 600 VOLTS SHALL BE GROUNDED EVERY 500 FEET
- CONCRETE FENCE POST FOOTING
  - CONCRETE FENCE POST SHALL BE CAST-IN-PLACE AGAINST UNDISTURBED SOIL (PRE-CAST CONCRETE FOOTINGS ARE NOT ALLOWED).
  - THE POST HOLE SHALL BE EXCAVATED BY AUGER OR SHOVEL.
  - THE METAL FENCE POST SHALL BE SET PLUMB IN THE POST HOLE
- LONG FENCE RUNS MAY USE #7 COIL WIRE WHEN APPROVED CONTRACTING OFFICER.





ELEVATION

# 1 PARKING & SECURITY LIGHT DETAIL NOT TO SCALE



# 2 EXTERIOR LIGHTING AND CONC. POLE DETAIL NOT TO SCALE

# POLE MTG TYPE EXTERIOR LIGHT (DOUBLE) NOT TO SCALE



Rev.	Description	Date
1	Issue for Construction	11/1/00

Design by	Design checked by	Design file no.
Drawn by	Reviewed by	Reviewed by
Submitted by	Submitted by	Submitted by
Approved by	Approved by	Approved by

PROJECT NO.	PROJECT LOCATION
PROJECT NO.	PROJECT LOCATION

Sheet reference number:  
Sheet ... of ...





1

2

3

4

5

CORPS OF ENGINEERS

TYPE: WF3

DEPARTMENT OF THE ARMY



FEATURES  
LAMP TYPE: F27T17/RS  
PROFILE: 1 LAMP  
SHIELDING: WHITE ACRYLIC  
BALLAST: ELECTRONIC

OPTIONS  
BALLAST: HIGH POWER FACTOR  
MAGNETIC, DIMMING,  
EMERGENCY

NOM. DIMENSIONS 203 mm X 102 mm X 457 mm  
(8" W X 4" D X 18" H)

## GENERAL DESCRIPTION

HOUSING: HEAVY GAUGE COLD ROLLED STEEL BACK PLATE

ELECTRICAL: 120 OR 277 VOLT BALLAST

FINISH: POLISHED CHROME OR BRASS, OR PAINTED

### COMPACT FLUORESCENT VANITY LIGHT, ADA COMPLIANT

CORPS OF ENGINEERS

TYPE: XL1

DEPARTMENT OF THE ARMY



FEATURES  
LAMP TYPE: LED  
MOUNTING: UNIVERSAL  
SHIELDING: FLAT SHEET ACRYLIC  
LETTERS: GREEN

OPTIONS  
LETTERS: RED  
OTHER: BRUSHED ALUMINUM,  
WHITE AND BRONZE

NOM. DIMENSIONS 289 mm X 200 mm X 44 mm  
(11 3/8" W X 7 7/8" H X 1 3/4" D)

## GENERAL DESCRIPTION

HOUSING: DIE-CAST ALUMINUM OR 20 GA. COLD ROLLED STEEL, HARDWARE  
FINISH TO MATCH HOUSING FINISH, 152 mm (6") H LETTERS  
WITH 19 mm (3/4") STROKE. DIRECTIONAL ARROWS AS  
REQUIRED

ELECTRICAL: 120 OR 277 VOLT

FINISH: BLACK

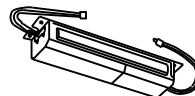
OTHER: MINIMUM BRIGHTNESS 20 CD/SQ METER ON FACE OF SIGN.

### LED STENCIL FACE EXIT SIGN

CORPS OF ENGINEERS

TYPE: XF1

DEPARTMENT OF THE ARMY



FEATURES  
LAMP TYPE: F32T8/RS, F25T8/RS  
PROFILE: 1 LAMP  
MOUNTING: CONCEALED IN FIXTURE  
OTHER: CHARGING INDICATOR  
LIGHT: TEST SWITCH  
BATTERY: 90 MINUTE OPERATION

OPTIONS  
PROFILE: 2 LAMPS  
LAMP TYPE: F40T11, F40/U/

NOM. DIMENSIONS 38 mm X 64 mm X 241 mm  
(1 1/2" W X 2 1/2" H X 9 1/2" L)

## GENERAL DESCRIPTION

HOUSING: 22 GAUGE RED PAINTED STEEL ENCLOSURE

ELECTRICAL: 120 OR 277 VOLT

BATTERY: HIGH TEMPERATURE NICKEL CADMIUM

OTHER: NOT SUITABLE FOR INSTALLATION IN HEATED AIR OUTLET FIXTURES,  
WET, DAMP OR HAZARDOUS LOCATION FIXTURES

### EMERGENCY BATTERY PACK UNIT

CORPS OF ENGINEERS

TYPE: PF6

DEPARTMENT OF THE ARMY



FEATURES  
LAMP TYPE: F32T8/75 CRI  
PROFILE: 2 LAMP  
SHIELDING: WIRE GUARD  
BALLAST: ELECTRONIC

OPTIONS  
PROFILE: 3 LAMP  
MOUNTING: SURFACE  
BALLAST: HIGH POWER FACTOR  
MAGNETIC, EMERGENCY

NOM. DIMENSIONS 178 mm X 356 mm X 1219 mm  
(7" H X 14" W X 4' L)

## GENERAL DESCRIPTION

HOUSING: DIE-FORMED CRS HOUSING WITH ROLLED SYMMETRIC  
REFLECTOR/BALLAST COVER

REFLECTORS: COLD ROLLED STEEL, PAINTED WHITE, 10% UPLIGHT APERTURES

ELECTRICAL: 120 OR 277 VOLT BALLAST

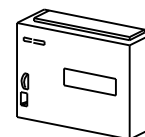
FINISH: WHITE ENAMEL POLYESTER POWDER COAT

### CHAIN HUNG 4' TURRET INDUSTRIAL FLUORESCENT

CORPS OF ENGINEERS

TYPE: XI1

DEPARTMENT OF THE ARMY



FEATURES  
BATTERY: SEALED LEAD CALCIUM, 3  
YEAR

OPTIONS  
BATTERY: SEALED LONG LIFE, 5  
YEAR  
SEALED NICKEL CADMIUM

NOM. DIMENSIONS 267 mm X 140 mm X 73 mm  
(10 1/2" L X 5 1/2" H X 2 7/8" W)

## GENERAL DESCRIPTION

HOUSING: COMPACT FIRE-RETARDANT THERMOPLASTIC

MOUNTING: LIGHTING HEADS MOUNTED TOP OR SIDE, WALL-MOUNTED UNIT.

ELECTRICAL: 120 OR 277 VOLT PRIMARY, 6 OR 12 VOLT SECONDARY

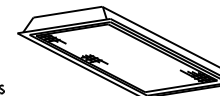
FINISH: OFF WHITE

### EMERGENCY LIGHTING BATTERY UNIT

CORPS OF ENGINEERS

TYPE: RF9

DEPARTMENT OF THE ARMY



FEATURES  
LAMP TYPE: F32T8/75 CRI  
PROFILE: 3 LAMP  
SHIELDING: ACRYLIC PRISMATIC LENS  
BALLAST: ELECTRONIC

OPTIONS  
PROFILE: 4 LAMP  
SHIELDING: 3.2 mm (0.125")  
PATTERN 12, PATTERN  
19, RFI SUPPRESSION

BALLAST:  
HIGH POWER FACTOR  
MAGNETIC, DIMMING,  
EMERGENCY

OTHER:  
GASKETED: AIR HANDLING  
AND/OR HEAT REMOVAL

NOM. DIMENSIONS 610 mm X 1219 mm X 152 mm  
(24" W X 4' L X 6" D)

## GENERAL DESCRIPTION

HOUSING: COLD ROLLED STEEL, FLANGE TO COORDINATE WITH CEILING;  
EXTRUDED ALUMINUM LENS FRAME, HINGED REMOVAL AND SPRING-  
LOADED CATCHES

MOUNTING: RECESSED INTO STANDARD NON METRIC GRID

REFLECTORS: HIGH REFLECTANCE GLOSS WHITE

ELECTRICAL: 120 OR 277 VOLT BALLAST

EFFICIENCY: 80%

### RECESSED LENSED 2' X 4' FLUORESCENT TROFFER



Rev.	Description	Date	By
1	Initial Issue	11/1/00	W. J. ...
2	Revised to meet ASCE requirements	11/1/00	W. J. ...
3	Revised to meet ASCE requirements	11/1/00	W. J. ...
4	Revised to meet ASCE requirements	11/1/00	W. J. ...
5	Revised to meet ASCE requirements	11/1/00	W. J. ...
6	Revised to meet ASCE requirements	11/1/00	W. J. ...
7	Revised to meet ASCE requirements	11/1/00	W. J. ...
8	Revised to meet ASCE requirements	11/1/00	W. J. ...
9	Revised to meet ASCE requirements	11/1/00	W. J. ...
10	Revised to meet ASCE requirements	11/1/00	W. J. ...
11	Revised to meet ASCE requirements	11/1/00	W. J. ...
12	Revised to meet ASCE requirements	11/1/00	W. J. ...
13	Revised to meet ASCE requirements	11/1/00	W. J. ...
14	Revised to meet ASCE requirements	11/1/00	W. J. ...
15	Revised to meet ASCE requirements	11/1/00	W. J. ...
16	Revised to meet ASCE requirements	11/1/00	W. J. ...
17	Revised to meet ASCE requirements	11/1/00	W. J. ...
18	Revised to meet ASCE requirements	11/1/00	W. J. ...
19	Revised to meet ASCE requirements	11/1/00	W. J. ...
20	Revised to meet ASCE requirements	11/1/00	W. J. ...
21	Revised to meet ASCE requirements	11/1/00	W. J. ...
22	Revised to meet ASCE requirements	11/1/00	W. J. ...
23	Revised to meet ASCE requirements	11/1/00	W. J. ...
24	Revised to meet ASCE requirements	11/1/00	W. J. ...
25	Revised to meet ASCE requirements	11/1/00	W. J. ...
26	Revised to meet ASCE requirements	11/1/00	W. J. ...
27	Revised to meet ASCE requirements	11/1/00	W. J. ...
28	Revised to meet ASCE requirements	11/1/00	W. J. ...
29	Revised to meet ASCE requirements	11/1/00	W. J. ...
30	Revised to meet ASCE requirements	11/1/00	W. J. ...
31	Revised to meet ASCE requirements	11/1/00	W. J. ...
32	Revised to meet ASCE requirements	11/1/00	W. J. ...
33	Revised to meet ASCE requirements	11/1/00	W. J. ...
34	Revised to meet ASCE requirements	11/1/00	W. J. ...
35	Revised to meet ASCE requirements	11/1/00	W. J. ...
36	Revised to meet ASCE requirements	11/1/00	W. J. ...
37	Revised to meet ASCE requirements	11/1/00	W. J. ...
38	Revised to meet ASCE requirements	11/1/00	W. J. ...
39	Revised to meet ASCE requirements	11/1/00	W. J. ...
40	Revised to meet ASCE requirements	11/1/00	W. J. ...
41	Revised to meet ASCE requirements	11/1/00	W. J. ...
42	Revised to meet ASCE requirements	11/1/00	W. J. ...
43	Revised to meet ASCE requirements	11/1/00	W. J. ...
44	Revised to meet ASCE requirements	11/1/00	W. J. ...
45	Revised to meet ASCE requirements	11/1/00	W. J. ...
46	Revised to meet ASCE requirements	11/1/00	W. J. ...
47	Revised to meet ASCE requirements	11/1/00	W. J. ...
48	Revised to meet ASCE requirements	11/1/00	W. J. ...
49	Revised to meet ASCE requirements	11/1/00	W. J. ...
50	Revised to meet ASCE requirements	11/1/00	W. J. ...

Rev.	Description	Date	By
1	Initial Issue	11/1/00	W. J. ...
2	Revised to meet ASCE requirements	11/1/00	W. J. ...
3	Revised to meet ASCE requirements	11/1/00	W. J. ...
4	Revised to meet ASCE requirements	11/1/00	W. J. ...
5	Revised to meet ASCE requirements	11/1/00	W. J. ...
6	Revised to meet ASCE requirements	11/1/00	W. J. ...
7	Revised to meet ASCE requirements	11/1/00	W. J. ...
8	Revised to meet ASCE requirements	11/1/00	W. J. ...
9	Revised to meet ASCE requirements	11/1/00	W. J. ...
10	Revised to meet ASCE requirements	11/1/00	W. J. ...
11	Revised to meet ASCE requirements	11/1/00	W. J. ...
12	Revised to meet ASCE requirements	11/1/00	W. J. ...
13	Revised to meet ASCE requirements	11/1/00	W. J. ...
14	Revised to meet ASCE requirements	11/1/00	W. J. ...
15	Revised to meet ASCE requirements	11/1/00	W. J. ...
16	Revised to meet ASCE requirements	11/1/00	W. J. ...
17	Revised to meet ASCE requirements	11/1/00	W. J. ...
18	Revised to meet ASCE requirements	11/1/00	W. J. ...
19	Revised to meet ASCE requirements	11/1/00	W. J. ...
20	Revised to meet ASCE requirements	11/1/00	W. J. ...
21	Revised to meet ASCE requirements	11/1/00	W. J. ...
22	Revised to meet ASCE requirements	11/1/00	W. J. ...
23	Revised to meet ASCE requirements	11/1/00	W. J. ...
24	Revised to meet ASCE requirements	11/1/00	W. J. ...
25	Revised to meet ASCE requirements	11/1/00	W. J. ...
26	Revised to meet ASCE requirements	11/1/00	W. J. ...
27	Revised to meet ASCE requirements	11/1/00	W. J. ...
28	Revised to meet ASCE requirements	11/1/00	W. J. ...
29	Revised to meet ASCE requirements	11/1/00	W. J. ...
30	Revised to meet ASCE requirements	11/1/00	W. J. ...
31	Revised to meet ASCE requirements	11/1/00	W. J. ...
32	Revised to meet ASCE requirements	11/1/00	W. J. ...
33	Revised to meet ASCE requirements	11/1/00	W. J. ...
34	Revised to meet ASCE requirements	11/1/00	W. J. ...
35	Revised to meet ASCE requirements	11/1/00	W. J. ...
36	Revised to meet ASCE requirements	11/1/00	W. J. ...
37	Revised to meet ASCE requirements	11/1/00	W. J. ...
38	Revised to meet ASCE requirements	11/1/00	W. J. ...
39	Revised to meet ASCE requirements	11/1/00	W. J. ...
40	Revised to meet ASCE requirements	11/1/00	W. J. ...
41	Revised to meet ASCE requirements	11/1/00	W. J. ...
42	Revised to meet ASCE requirements	11/1/00	W. J. ...
43	Revised to meet ASCE requirements	11/1/00	W. J. ...
44	Revised to meet ASCE requirements	11/1/00	W. J. ...
45	Revised to meet ASCE requirements	11/1/00	W. J. ...
46	Revised to meet ASCE requirements	11/1/00	W. J. ...
47	Revised to meet ASCE requirements	11/1/00	W. J. ...
48	Revised to meet ASCE requirements	11/1/00	W. J. ...
49	Revised to meet ASCE requirements	11/1/00	W. J. ...
50	Revised to meet ASCE requirements	11/1/00	W. J. ...

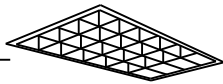
Rev.	Description	Date	By
1	Initial Issue	11/1/00	W. J. ...
2	Revised to meet ASCE requirements	11/1/00	W. J. ...
3	Revised to meet ASCE requirements	11/1/00	W. J. ...
4	Revised to meet ASCE requirements	11/1/00	W. J. ...
5	Revised to meet ASCE requirements	11/1/00	W. J. ...
6	Revised to meet ASCE requirements	11/1/00	W. J. ...
7	Revised to meet ASCE requirements	11/1/00	W. J. ...
8	Revised to meet ASCE requirements	11/1/00	W. J. ...
9	Revised to meet ASCE requirements	11/1/00	W. J. ...
10	Revised to meet ASCE requirements	11/1/00	W. J. ...
11	Revised to meet ASCE requirements	11/1/00	W. J. ...
12	Revised to meet ASCE requirements	11/1/00	W. J. ...
13	Revised to meet ASCE requirements	11/1/00	W. J. ...
14	Revised to meet ASCE requirements	11/1/00	W. J. ...
15	Revised to meet ASCE requirements	11/1/00	W. J. ...
16	Revised to meet ASCE requirements	11/1/00	W. J. ...
17	Revised to meet ASCE requirements	11/1/00	W. J. ...
18	Revised to meet ASCE requirements	11/1/00	W. J. ...
19	Revised to meet ASCE requirements	11/1/00	W. J. ...
20	Revised to meet ASCE requirements	11/1/00	W. J. ...
21	Revised to meet ASCE requirements	11/1/00	W. J. ...
22	Revised to meet ASCE requirements	11/1/00	W. J. ...
23	Revised to meet ASCE requirements	11/1/00	W. J. ...
24	Revised to meet ASCE requirements	11/1/00	W. J. ...
25	Revised to meet ASCE requirements	11/1/00	W. J. ...
26	Revised to meet ASCE requirements	11/1/00	W. J. ...
27	Revised to meet ASCE requirements	11/1/00	W. J. ...
28	Revised to meet ASCE requirements	11/1/00	W. J. ...
29	Revised to meet ASCE requirements	11/1/00	W. J. ...
30	Revised to meet ASCE requirements	11/1/00	W. J. ...
31	Revised to meet ASCE requirements	11/1/00	W. J. ...
32	Revised to meet ASCE requirements	11/1/00	W. J. ...
33	Revised to meet ASCE requirements	11/1/00	W. J. ...
34	Revised to meet ASCE requirements	11/1/00	W. J. ...
35	Revised to meet ASCE requirements	11/1/00	W. J. ...
36	Revised to meet ASCE requirements	11/1/00	W. J. ...
37	Revised to meet ASCE requirements	11/1/00	W. J. ...
38	Revised to meet ASCE requirements	11/1/00	W. J. ...
39	Revised to meet ASCE requirements	11/1/00	W. J. ...
40	Revised to meet ASCE requirements	11/1/00	W. J. ...
41	Revised to meet ASCE requirements	11/1/00	W. J. ...
42	Revised to meet ASCE requirements	11/1/00	W. J. ...
43	Revised to meet ASCE requirements	11/1/00	W. J. ...
44	Revised to meet ASCE requirements	11/1/00	W. J. ...
45	Revised to meet ASCE requirements	11/1/00	W. J. ...
46	Revised to meet ASCE requirements	11/1/00	W. J. ...
47	Revised to meet ASCE requirements	11/1/00	W. J. ...
48	Revised to meet ASCE requirements	11/1/00	W. J. ...
49	Revised to meet ASCE requirements	11/1/00	W. J. ...
50	Revised to meet ASCE requirements	11/1/00	W. J. ...

Sheet  
reference  
number:

CORPS OF ENGINEERS

DEPARTMENT OF THE ARMY

TYPE: RF12



FEATURES

LAMP TYPE: F32T8/75 CRI  
PROFILE: 3 LAMP  
MOUNTING: RECESSED GRID  
SHIELDING: 76 mm (3") DEEP, 24  
CELL SEMI-SPECULAR,  
LOW IRIDESCENT  
PARABOLIC LOUVER  
BALLAST: ELECTRONIC

OPTIONS

PROFILE: 4 LAMP  
SHIELDING: SPECULAR LOUVER, CELL  
CONFIGURATION  
BALLAST: HIGH POWER FACTOR  
MAGNETIC, DIMMING,  
EMERGENCY  
OTHER: GASKETED AIR HANDLING  
AND/OR HEAT REMOVAL

NOM. DIMENSIONS 610 mm X 1219 mm X 152 mm  
(24" W X 4' L X 6" D)

GENERAL DESCRIPTION

HOUSING: COLD ROLLED STEEL, FLANGE TO COORDINATE WITH CEILING

MOUNTING: RECESSED INTO STANDARD NON METRIC GRID

REFLECTORS: HIGH REFLECTANCE GLOSS WHITE

ELECTRICAL: 120 OR 277 VOLT BALLAST

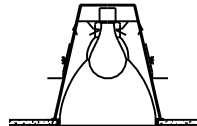
EFFICIENCY: 70%

RECESSED PARABOLIC 2' X 4'  
FLUORESCENT TROFFER

CORPS OF ENGINEERS

DEPARTMENT OF THE ARMY

TYPE: R12



FEATURES

LAMP TYPE: 90W T8/IF  
PROFILE: 1 LAMP  
REFLECTORS: CLEAR ALZAK® SEMI-  
SPECULAR WITH SELF-  
FLANGE

OPTIONS

LAMP TYPE: 100W A21/IF, 150W  
A21/IF  
REFLECTOR: CHAMPAGNE GOLD  
REFLECTOR WITH SELF  
FLANGE, WHITE PAINTED  
FLANGE, SLOPED CEILING  
ADAPTER

NOM. DIMENSIONS 178 mm X 305 mm  
(7" DIA. X 12" D)

GENERAL DESCRIPTION

HOUSING: ONE PIECE PRECISION DIE-CAST ALUMINUM COLLAR,  
DIE-FORMED 20 GA. MOUNTING PLATE

ELECTRICAL: 120 VOLT

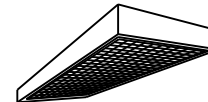
EFFICIENCY: 71%

7" DIA. RECESSED INCANDESCENT  
DOWNLIGHT

CORPS OF ENGINEERS

DEPARTMENT OF THE ARMY

TYPE: SFB



FEATURES

LAMP TYPE: F32T8/75 CRI  
PROFILE: 3 LAMP  
SHIELDING: PRISMATIC LENS  
BALLAST: ELECTRONIC

OPTIONS

PROFILE: 4 LAMP  
SHIELDING: OPAL WHITE, 3.2 mm  
(0.125") PATTERN 12,  
PATTERN 19, RF1  
SUPPRESSION  
BALLAST: HIGH POWER FACTOR  
MAGNETIC, DIMMING,  
EMERGENCY

NOM. DIMENSIONS 610 mm X 1219 mm X 102 mm  
(24" W X 4' L X 4" D)

GENERAL DESCRIPTION

HOUSING: COLD ROLLED STEEL WITH NO VISIBLE HOLES OR KNOCKOUTS  
EXTRUDED ALUMINUM HINGED LENS FRAME WITH SPRING-LOADED  
CATCHES

MOUNTING: FIXTURE IS LONGER THAN METRIC GRID

REFLECTORS: GLOSS WHITE

ELECTRICAL: 120 OR 277 VOLT BALLAST

FINISH: BAKED WHITE ENAMEL OR POLYESTER POWDER COAT

EFFICIENCY: 80%

SURFACE MOUNTED LENSED 2' X 4'  
FLUORESCENT TROFFER



Rev.	Description	Date
1	Initial Issue	10/1/80
2	Revised to meet new spec.	11/1/80
3	Revised to meet new spec.	12/1/80
4	Revised to meet new spec.	1/1/81
5	Revised to meet new spec.	2/1/81
6	Revised to meet new spec.	3/1/81
7	Revised to meet new spec.	4/1/81
8	Revised to meet new spec.	5/1/81
9	Revised to meet new spec.	6/1/81
10	Revised to meet new spec.	7/1/81
11	Revised to meet new spec.	8/1/81
12	Revised to meet new spec.	9/1/81
13	Revised to meet new spec.	10/1/81
14	Revised to meet new spec.	11/1/81
15	Revised to meet new spec.	12/1/81
16	Revised to meet new spec.	1/1/82
17	Revised to meet new spec.	2/1/82
18	Revised to meet new spec.	3/1/82
19	Revised to meet new spec.	4/1/82
20	Revised to meet new spec.	5/1/82
21	Revised to meet new spec.	6/1/82
22	Revised to meet new spec.	7/1/82
23	Revised to meet new spec.	8/1/82
24	Revised to meet new spec.	9/1/82
25	Revised to meet new spec.	10/1/82
26	Revised to meet new spec.	11/1/82
27	Revised to meet new spec.	12/1/82
28	Revised to meet new spec.	1/1/83
29	Revised to meet new spec.	2/1/83
30	Revised to meet new spec.	3/1/83
31	Revised to meet new spec.	4/1/83
32	Revised to meet new spec.	5/1/83
33	Revised to meet new spec.	6/1/83
34	Revised to meet new spec.	7/1/83
35	Revised to meet new spec.	8/1/83
36	Revised to meet new spec.	9/1/83
37	Revised to meet new spec.	10/1/83
38	Revised to meet new spec.	11/1/83
39	Revised to meet new spec.	12/1/83
40	Revised to meet new spec.	1/1/84
41	Revised to meet new spec.	2/1/84
42	Revised to meet new spec.	3/1/84
43	Revised to meet new spec.	4/1/84
44	Revised to meet new spec.	5/1/84
45	Revised to meet new spec.	6/1/84
46	Revised to meet new spec.	7/1/84
47	Revised to meet new spec.	8/1/84
48	Revised to meet new spec.	9/1/84
49	Revised to meet new spec.	10/1/84
50	Revised to meet new spec.	11/1/84
51	Revised to meet new spec.	12/1/84
52	Revised to meet new spec.	1/1/85
53	Revised to meet new spec.	2/1/85
54	Revised to meet new spec.	3/1/85
55	Revised to meet new spec.	4/1/85
56	Revised to meet new spec.	5/1/85
57	Revised to meet new spec.	6/1/85
58	Revised to meet new spec.	7/1/85
59	Revised to meet new spec.	8/1/85
60	Revised to meet new spec.	9/1/85
61	Revised to meet new spec.	10/1/85
62	Revised to meet new spec.	11/1/85
63	Revised to meet new spec.	12/1/85
64	Revised to meet new spec.	1/1/86
65	Revised to meet new spec.	2/1/86
66	Revised to meet new spec.	3/1/86
67	Revised to meet new spec.	4/1/86
68	Revised to meet new spec.	5/1/86
69	Revised to meet new spec.	6/1/86
70	Revised to meet new spec.	7/1/86
71	Revised to meet new spec.	8/1/86
72	Revised to meet new spec.	9/1/86
73	Revised to meet new spec.	10/1/86
74	Revised to meet new spec.	11/1/86
75	Revised to meet new spec.	12/1/86
76	Revised to meet new spec.	1/1/87
77	Revised to meet new spec.	2/1/87
78	Revised to meet new spec.	3/1/87
79	Revised to meet new spec.	4/1/87
80	Revised to meet new spec.	5/1/87
81	Revised to meet new spec.	6/1/87
82	Revised to meet new spec.	7/1/87
83	Revised to meet new spec.	8/1/87
84	Revised to meet new spec.	9/1/87
85	Revised to meet new spec.	10/1/87
86	Revised to meet new spec.	11/1/87
87	Revised to meet new spec.	12/1/87
88	Revised to meet new spec.	1/1/88
89	Revised to meet new spec.	2/1/88
90	Revised to meet new spec.	3/1/88
91	Revised to meet new spec.	4/1/88
92	Revised to meet new spec.	5/1/88
93	Revised to meet new spec.	6/1/88
94	Revised to meet new spec.	7/1/88
95	Revised to meet new spec.	8/1/88
96	Revised to meet new spec.	9/1/88
97	Revised to meet new spec.	10/1/88
98	Revised to meet new spec.	11/1/88
99	Revised to meet new spec.	12/1/88
100	Revised to meet new spec.	1/1/89

Rev.	Description	Date
1	Initial Issue	10/1/80
2	Revised to meet new spec.	11/1/80
3	Revised to meet new spec.	12/1/80
4	Revised to meet new spec.	1/1/81
5	Revised to meet new spec.	2/1/81
6	Revised to meet new spec.	3/1/81
7	Revised to meet new spec.	4/1/81
8	Revised to meet new spec.	5/1/81
9	Revised to meet new spec.	6/1/81
10	Revised to meet new spec.	7/1/81
11	Revised to meet new spec.	8/1/81
12	Revised to meet new spec.	9/1/81
13	Revised to meet new spec.	10/1/81
14	Revised to meet new spec.	11/1/81
15	Revised to meet new spec.	12/1/81
16	Revised to meet new spec.	1/1/82
17	Revised to meet new spec.	2/1/82
18	Revised to meet new spec.	3/1/82
19	Revised to meet new spec.	4/1/82
20	Revised to meet new spec.	5/1/82
21	Revised to meet new spec.	6/1/82
22	Revised to meet new spec.	7/1/82
23	Revised to meet new spec.	8/1/82
24	Revised to meet new spec.	9/1/82
25	Revised to meet new spec.	10/1/82
26	Revised to meet new spec.	11/1/82
27	Revised to meet new spec.	12/1/82
28	Revised to meet new spec.	1/1/83
29	Revised to meet new spec.	2/1/83
30	Revised to meet new spec.	3/1/83
31	Revised to meet new spec.	4/1/83
32	Revised to meet new spec.	5/1/83
33	Revised to meet new spec.	6/1/83
34	Revised to meet new spec.	7/1/83
35	Revised to meet new spec.	8/1/83
36	Revised to meet new spec.	9/1/83
37	Revised to meet new spec.	10/1/83
38	Revised to meet new spec.	11/1/83
39	Revised to meet new spec.	12/1/83
40	Revised to meet new spec.	1/1/84
41	Revised to meet new spec.	2/1/84
42	Revised to meet new spec.	3/1/84
43	Revised to meet new spec.	4/1/84
44	Revised to meet new spec.	5/1/84
45	Revised to meet new spec.	6/1/84
46	Revised to meet new spec.	7/1/84
47	Revised to meet new spec.	8/1/84
48	Revised to meet new spec.	9/1/84
49	Revised to meet new spec.	10/1/84
50	Revised to meet new spec.	11/1/84
51	Revised to meet new spec.	12/1/84
52	Revised to meet new spec.	1/1/85
53	Revised to meet new spec.	2/1/85
54	Revised to meet new spec.	3/1/85
55	Revised to meet new spec.	4/1/85
56	Revised to meet new spec.	5/1/85
57	Revised to meet new spec.	6/1/85
58	Revised to meet new spec.	7/1/85
59	Revised to meet new spec.	8/1/85
60	Revised to meet new spec.	9/1/85
61	Revised to meet new spec.	10/1/85
62	Revised to meet new spec.	11/1/85
63	Revised to meet new spec.	12/1/85
64	Revised to meet new spec.	1/1/86
65	Revised to meet new spec.	2/1/86
66	Revised to meet new spec.	3/1/86
67	Revised to meet new spec.	4/1/86
68	Revised to meet new spec.	5/1/86
69	Revised to meet new spec.	6/1/86
70	Revised to meet new spec.	7/1/86
71	Revised to meet new spec.	8/1/86
72	Revised to meet new spec.	9/1/86
73	Revised to meet new spec.	10/1/86
74	Revised to meet new spec.	11/1/86
75	Revised to meet new spec.	12/1/86
76	Revised to meet new spec.	1/1/87
77	Revised to meet new spec.	2/1/87
78	Revised to meet new spec.	3/1/87
79	Revised to meet new spec.	4/1/87
80	Revised to meet new spec.	5/1/87
81	Revised to meet new spec.	6/1/87
82	Revised to meet new spec.	7/1/87
83	Revised to meet new spec.	8/1/87
84	Revised to meet new spec.	9/1/87
85	Revised to meet new spec.	10/1/87
86	Revised to meet new spec.	11/1/87
87	Revised to meet new spec.	12/1/87
88	Revised to meet new spec.	1/1/88
89	Revised to meet new spec.	2/1/88
90	Revised to meet new spec.	3/1/88
91	Revised to meet new spec.	4/1/88
92	Revised to meet new spec.	5/1/88
93	Revised to meet new spec.	6/1/88
94	Revised to meet new spec.	7/1/88
95	Revised to meet new spec.	8/1/88
96	Revised to meet new spec.	9/1/88
97	Revised to meet new spec.	10/1/88
98	Revised to meet new spec.	11/1/88
99	Revised to meet new spec.	12/1/88
100	Revised to meet new spec.	1/1/89

Rev.	Description	Date
1	Initial Issue	10/1/80
2	Revised to meet new spec.	11/1/80
3	Revised to meet new spec.	12/1/80
4	Revised to meet new spec.	1/1/81
5	Revised to meet new spec.	2/1/81
6	Revised to meet new spec.	3/1/81
7	Revised to meet new spec.	4/1/81
8	Revised to meet new spec.	5/1/81
9	Revised to meet new spec.	6/1/81
10	Revised to meet new spec.	7/1/81
11	Revised to meet new spec.	8/1/81
12	Revised to meet new spec.	9/1/81
13	Revised to meet new spec.	10/1/81
14	Revised to meet new spec.	11/1/81
15	Revised to meet new spec.	12/1/81
16	Revised to meet new spec.	1/1/82
17	Revised to meet new spec.	2/1/82
18	Revised to meet new spec.	3/1/82
19	Revised to meet new spec.	4/1/82
20	Revised to meet new spec.	5/1/82
21	Revised to meet new spec.	6/1/82
22	Revised to meet new spec.	7/1/82
23	Revised to meet new spec.	8/1/82
24	Revised to meet new spec.	9/1/82
25	Revised to meet new spec.	10/1/82
26	Revised to meet new spec.	11/1/82
27	Revised to meet new spec.	12/1/82
28	Revised to meet new spec.	1/1/83
29	Revised to meet new spec.	2/1/83
30	Revised to meet new spec.	3/1/83
31	Revised to meet new spec.	4/1/83
32	Revised to meet new spec.	5/1/83
33	Revised to meet new spec.	6/1/83
34	Revised to meet new spec.	7/1/83
35	Revised to meet new spec.	8/1/83
36	Revised to meet new spec.	9/1/83
37	Revised to meet new spec.	10/1/83
38	Revised to meet new spec.	11/1/83
39	Revised to meet new spec.	12/1/83
40	Revised to meet new spec.	1/1/84
41	Revised to meet new spec.	2/1/84
42	Revised to meet new spec.	3/1/84
43	Revised to meet new spec.	4/1/84
44	Revised to meet new spec.	5/1/84
45	Revised to meet new spec.	6/1/84
46	Revised to meet new spec.	7/1/84
47	Revised to meet new spec.	8/1/84
48	Revised to meet new spec.	9/1/84
49	Revised to meet new spec.	10/1/84
50	Revised to meet new spec.	11/1/84
51	Revised to meet new spec.	12/1/84
52	Revised to meet new spec.	1/1/85
53	Revised to meet new spec.	2/1/85
54	Revised to meet new spec.	3/1/85
55	Revised to meet new spec.	4/1/85
56	Revised to meet new spec.	5/1/85
57	Revised to meet new spec.	6/1/85
58	Revised to meet new spec.	7/1/85
59	Revised to meet new spec.	8/1/85
60	Revised to meet new spec.	9/1/85
61	Revised to meet new spec.	10/1/85
62	Revised to meet new spec.	11/1/85
63	Revised to meet new spec.	12/1/85
64	Revised to meet new spec.	1/1/86
65	Revised to meet new spec.	2/1/86
66	Revised to meet new spec.	3/1/86
67	Revised to meet new spec.	4/1/86
68	Revised to meet new spec.	5/1/86
69	Revised to meet new spec.	6/1/86
70	Revised to meet new spec.	7/1/86
71	Revised to meet new spec.	8/1/86
72	Revised to meet new spec.	9/1/86
73	Revised to meet new spec.	10/1/86
74	Revised to meet new spec.	11/1/86
75	Revised to meet new spec.	12/1/86
76	Revised to meet new spec.	1/1/87
77	Revised to meet new spec.	2/1/87
78	Revised to meet new spec.	3/1/87
79	Revised to meet new spec.	4/1/87
80	Revised to meet new spec.	5/1/87
81	Revised to meet new spec.	6/1/87
82	Revised to meet new spec.	7/1/87
83	Revised to meet new spec.	8/1/87
84	Revised to meet new spec.	9/1/87
85	Revised to meet new spec.	10/1/87
86	Revised to meet new spec.	11/1/87
87	Revised to meet new spec.	12/1/87
88	Revised to meet new spec.	1/1/88
89	Revised to meet new spec.	2/1/88
90	Revised to meet new spec.	3/1/88
91	Revised to meet new spec.	4/1/88
92	Revised to meet new spec.	5/1/88

R-52

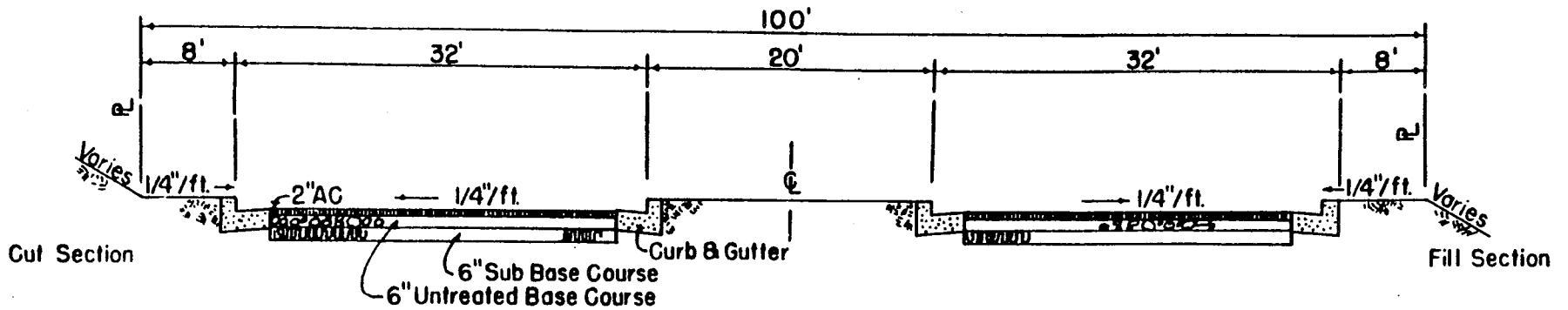
STANDARD  
DETAILS

SEPTEMBER 1984

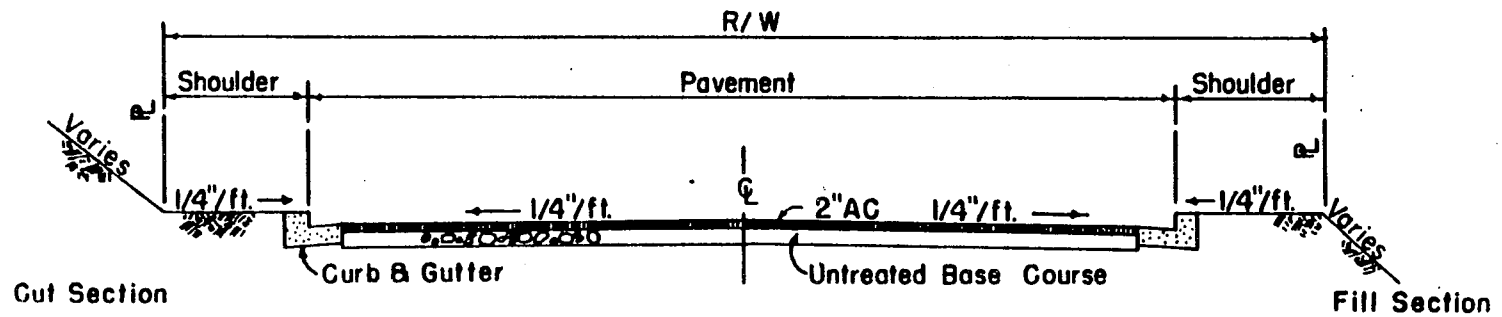
ROADWAY TYPICAL SECTIONS

NOT TO SCALE

COUNTY OF MAUI



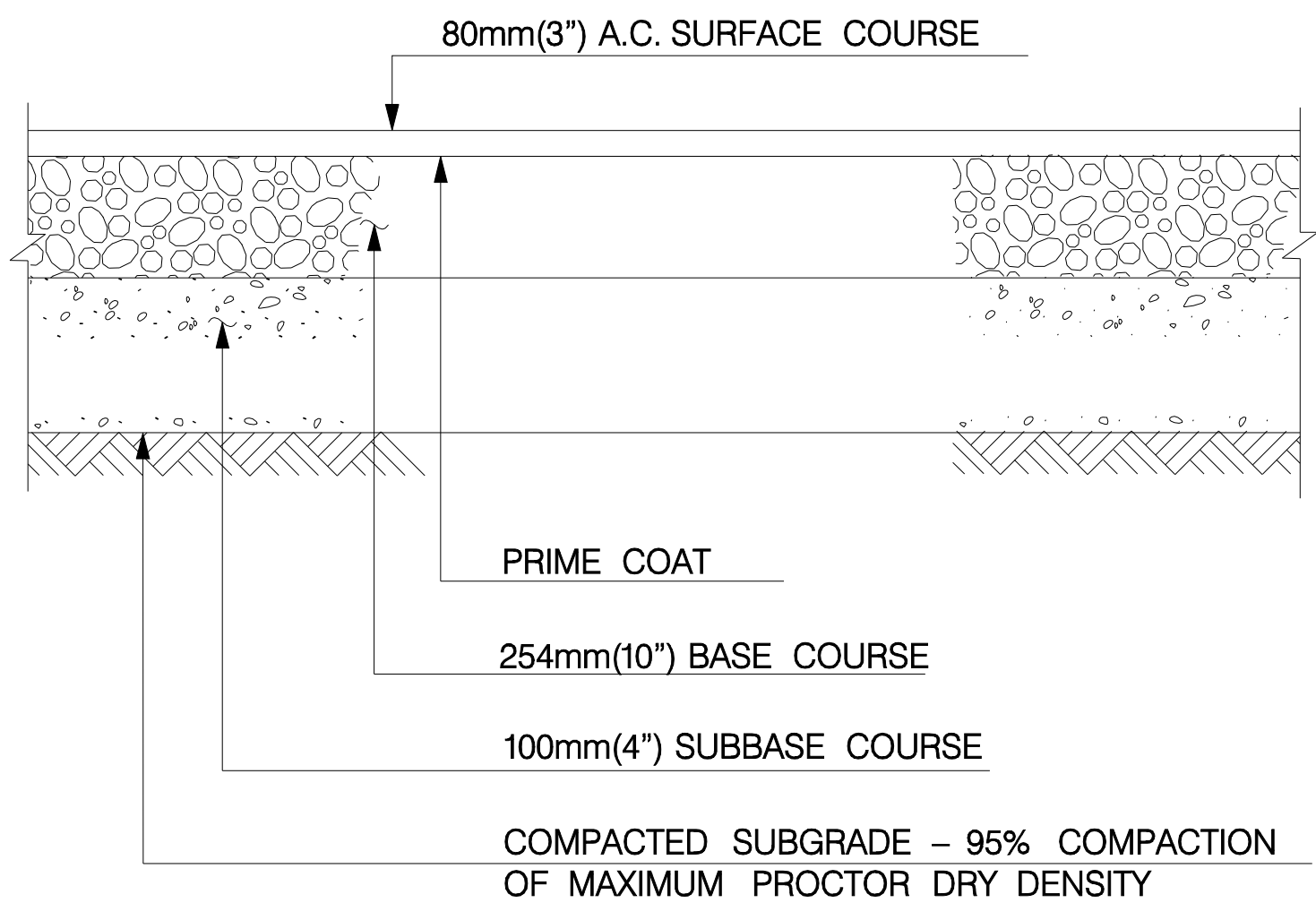
## PARKWAY



## STREETS W/ CURBS

ROADWAY  
TYPICAL SECTIONS

Scale None

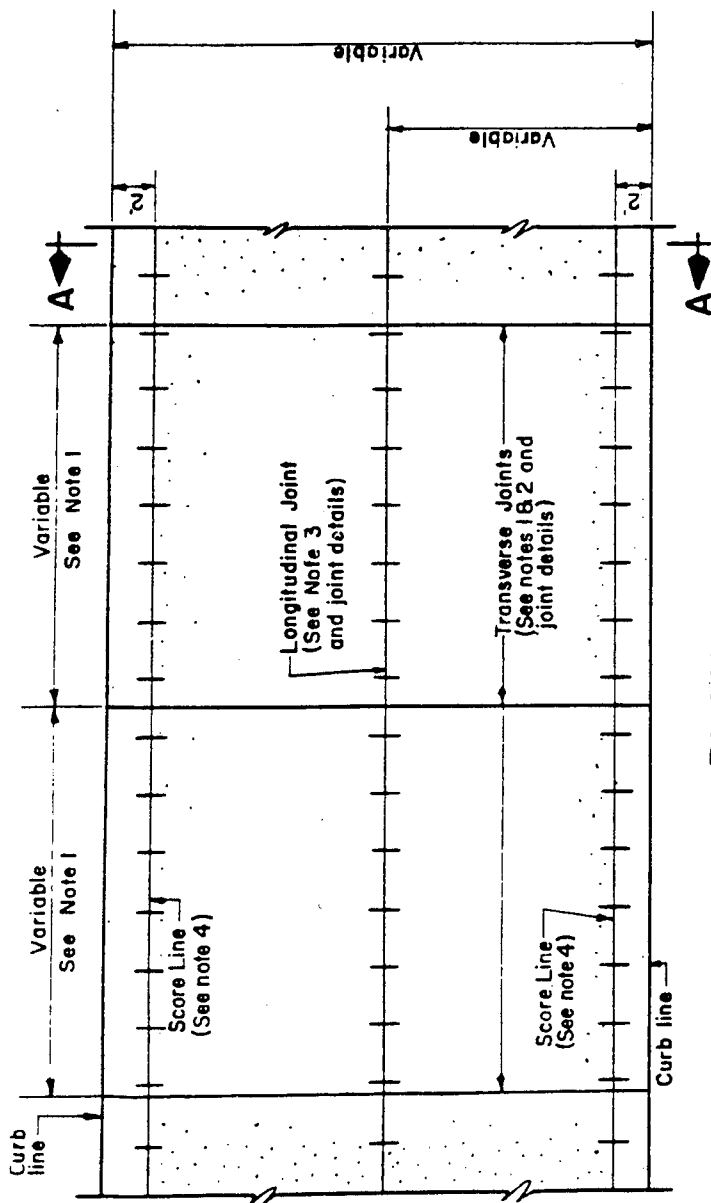


1

## A.C. PAVEMENT SECTION

- EXAMPLE

NOT TO SCALE

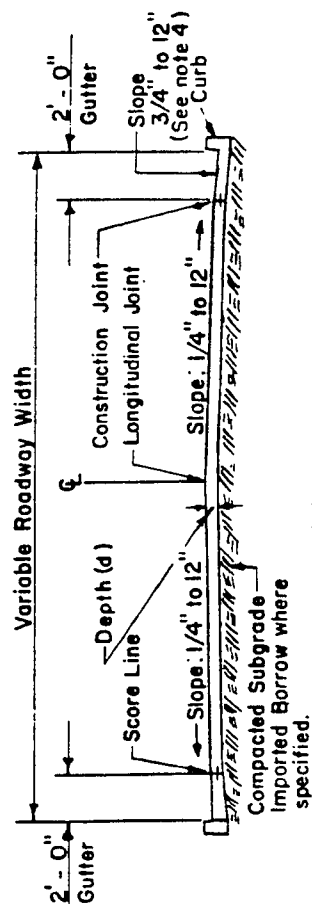


## PLAN

SCALE: 1" = 1'-0"

## CONSTRUCTION NOTES

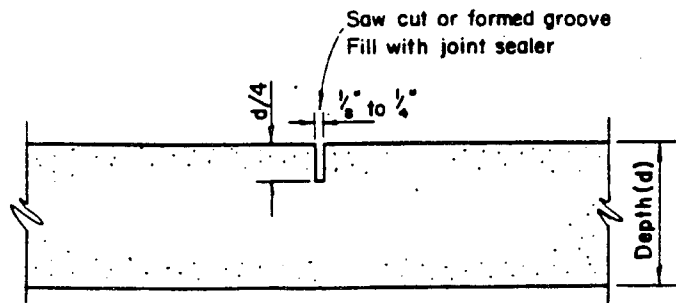
1. Transverse joints shall be either weakened plane contraction joints or construction joints with dowels and shall be evenly spaced approximately 15 feet apart.
2. Expansion joints with dowels shall be located at intersections only.
3. Longitudinal joints shall be either weakened plane joints or keyed construction joints with tie bars. Maximum spacing between joints shall be as provided in the Standard Specifications.
4. Gutters constructed monolithically with the pavement shall be delineated with a score line. Gutters constructed separately shall have a longitudinal keyed construction joint with tie bars. Tie bars shall also be provided where gutters are constructed monolithically. For monolithic gutters, slope shall be 1/4" to 12".
5. Gutters on grades at 12% or less shall be steel trowel finished and gutters on grades greater than 12% shall be broom finished longitudinally.
6. Pavement on grades at 12% or less shall be broom finished transversely and pavement on grades greater than 12% shall be bristle brush finished.



## SECTION A-A

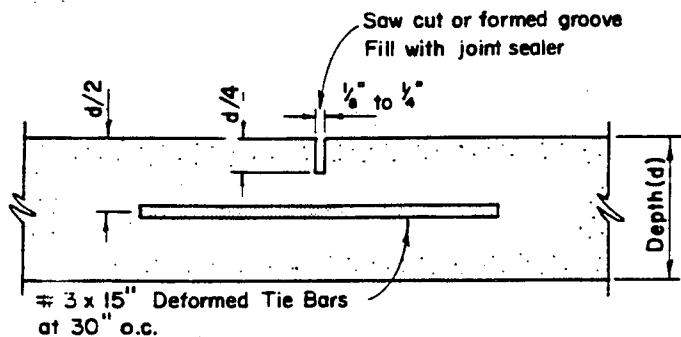
SCALE: 1/8" = 1'-0"

# CONCRETE PAVEMENT



## TRANSVERSE CONTRACTION JOINT

Scale:  $1\frac{1}{2}'' = 1' - 0''$

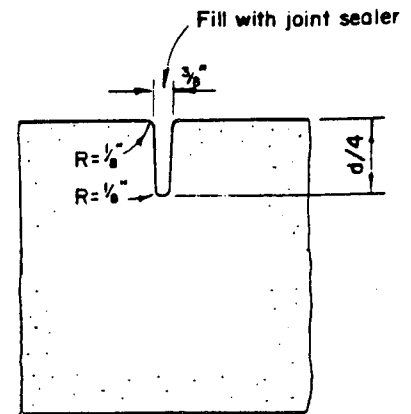


## LONGITUDINAL JOINT

Scale:  $1\frac{1}{2}'' = 1' - 0''$

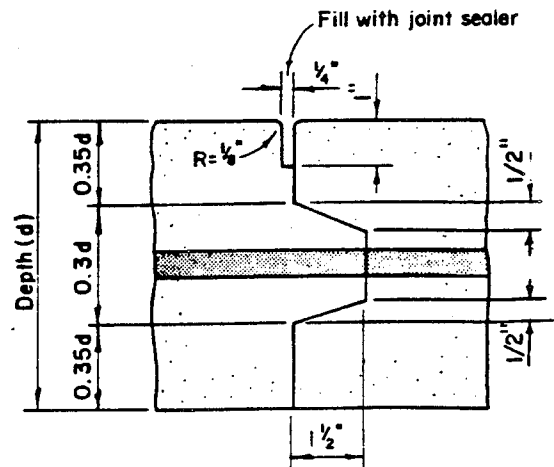
## CONSTRUCTION NOTES

1. Weakened plane joints may be constructed by sawing, forming dummy groove (see Detail "A") or inserting ribbon or premolded strip.
2. All joints shall be slightly under filled with joint sealer paving asphalt, grade 85-100, AASHTO Designation: M-20
3. All dowels shall be point and greased. Expansion joint dowels shall be equipped with metal caps.
4. Expansion joints without dowels shall be constructed at junctions of concrete pavement and rectangular structure.
5. Construction joints at unplanned locations shall be keyed joints with tie bars (Detail "B").



## DUMMY GROOVE JOINT DETAIL "A"

Scale:  $3'' = 1' - 0''$



## DETAIL "B"

Scale:  $3'' = 1' - 0''$

R-10

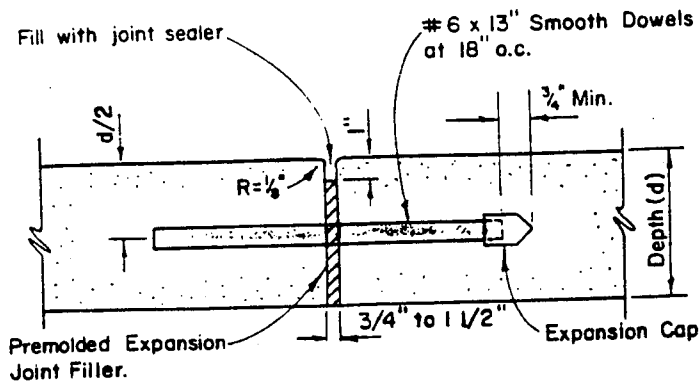
STANDARD  
DETAILS

CONCRETE PAVEMENT JOINT DETAILS

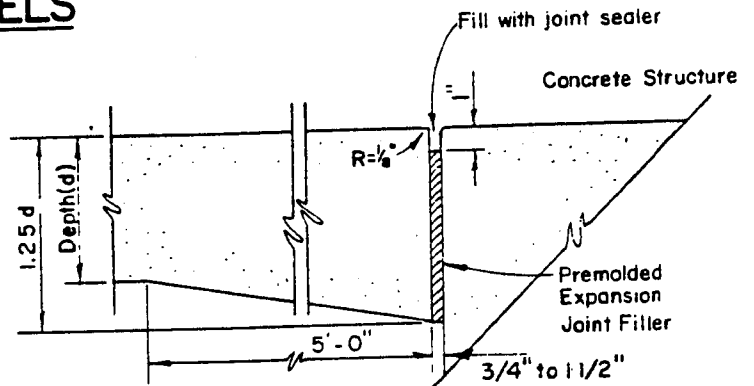
SEPTEMBER 1984

SCALE: AS NOTED

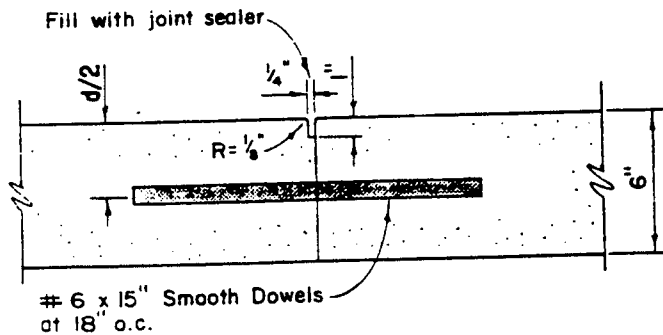
COUNTY OF KAUAI  
CITY & COUNTY OF HONOLULU  
COUNTY OF MAUI  
COUNTY OF HAWAII



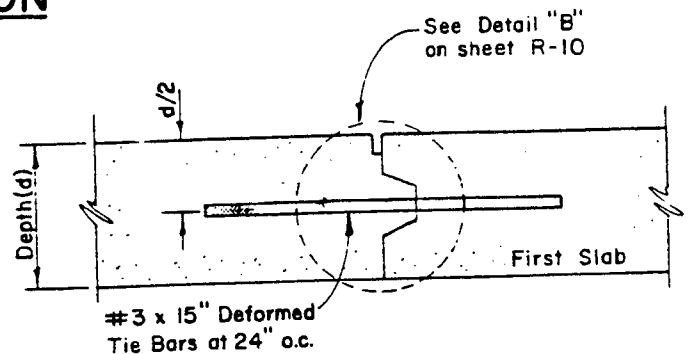
## EXPANSION JOINT WITH DOWELS



## EXPANSION JOINT

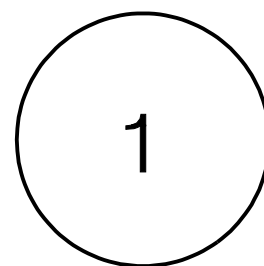
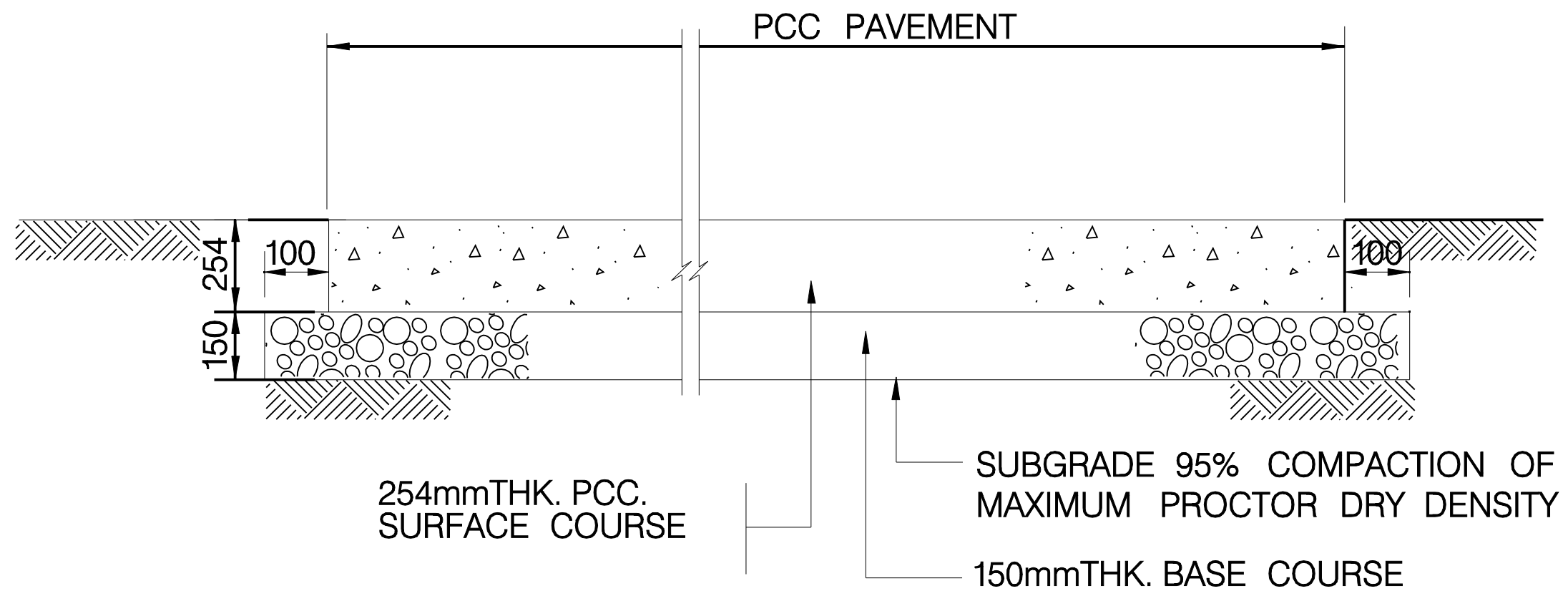


## TRANSVERSE CONSTRUCTION JOINT WITH DOWELS



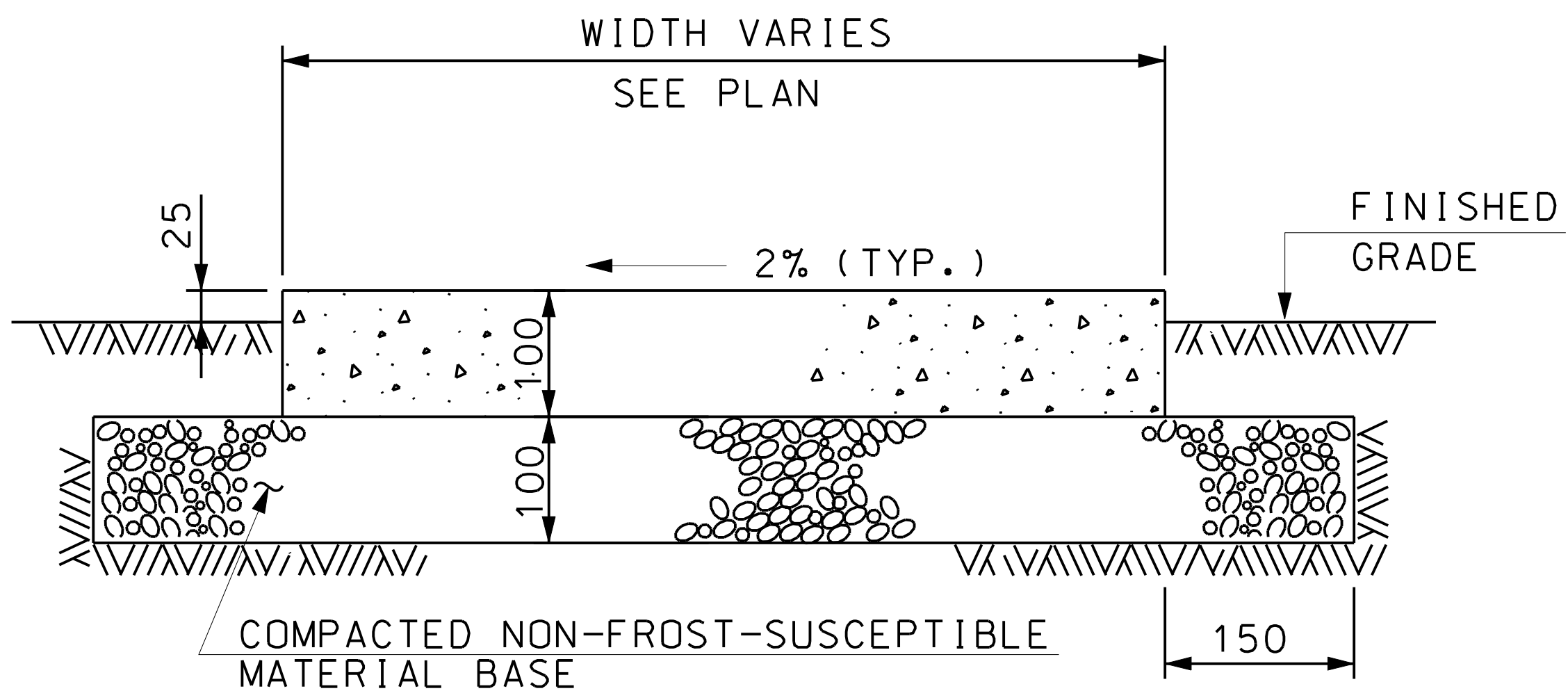
## LONGITUDINAL AND TRANSVERSE KEYED CONSTRUCTION JOINT WITH TIE BARS



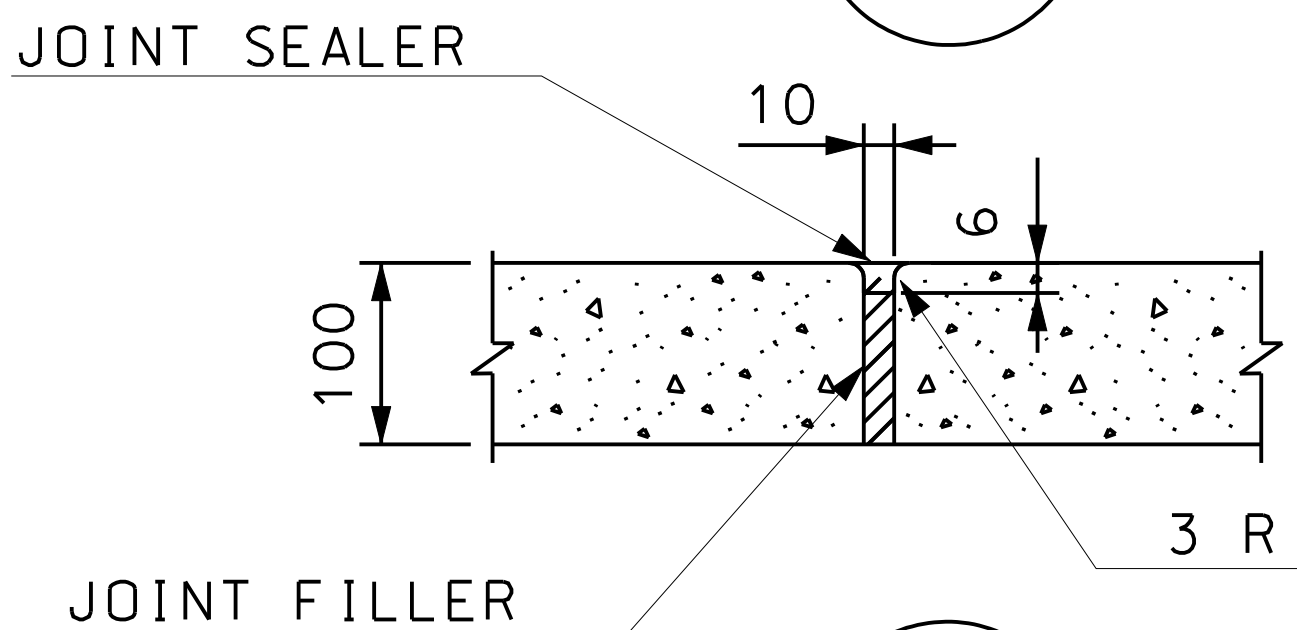


## TYP.-PCC. PVMT. SECTION-EXAMPLE

NOT TO SCALE

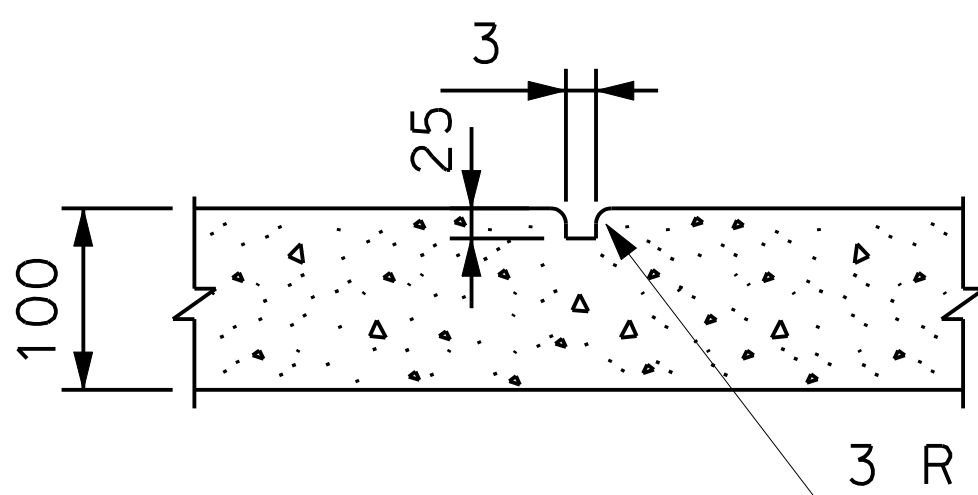


1A SECTION



PROVIDE EXP. JOINTS AT MAX. 9.0 M INTERVALS FOR STRAIGHT SECTIONS, AT ALL RETURNS OF WALKS, AND WHERE WALKS ABUT OTHER CONCRETE STRUCTURES.

1B EXPANSION JOINT



TRANSVERSE CONTRACTION JOINTS SHALL BE SPACED SO THAT RATIO OF SLAB LENGTH TO WIDTH WILL NOT EXCEED 1.25. THE DEPTH OF THE CONTRACTION JOINT WILL BE AT LEAST ONE-FOURTH OF THE SIDEWALK SLAB THICKNESS, BUT NOT LESS THAN THE MAXIMUM NOMINAL SIZE OF THE AGGREGATE USED.

1C CONTRACTION JOINT

1 CONCRETE SIDEWALK DETAILS  
NOT TO SCALE

# The High-Security Series

HS427-S • HS430-S

Full-Height Turnstile (Single) • Interior & Exterior Application

HS439-S • HS448-S

www.TURNSTILES.us distributes the most reliable full-height turnstiles available. The High-Security Series units can be engineered to meet all your security and control requirements, and can be created as stand-alone units, or as part of an integrated system. Available in stainless steel, powder coat or a hot-dipped galvanized finish, these units can be fitted for any application with leading edge technology and features.

## Controls and Interfaces

- Biometric Integration
- Card Readers
- Electronic/LCD Counters
- Metal Detection
- Fail-Open or Fail-Secure Locking
- Push-Button and Wireless Remotes
- Manual Key Override – both directions
- Indicator Lights



## Size Options

(pedestrian clearance):

HS427-S: 27" (686mm)

HS430-S: 30" (782mm)

HS439-S: 39" (991mm)

HS448-S: 48" (1219mm)

304 Stainless,  
No. 4 Satin finish (shown)

Also available in  
hot-dipped galvanized or  
powder coat finishes.

	Depth	Width	Passage Width	Passage Height	Overall Height
	A*	B*	C*	D*	E*
HS427-S	54" 1372mm	62" 1575mm	27" 686mm	84" 2134mm	91" 2311mm
HS430-S	56" 1422mm	66" 1676mm	30" 762mm	84" 2134mm	91" 2311mm
HS439-S	68" 1727mm	84" 2134mm	39" 990mm	84" 2134mm	91" 2311mm
HS448-S	93" 2362mm	106" 2692mm	48" 1219mm	84" 2134mm	91" 2311mm

\* See CAD drawings on reverse side.

8641 South Warhawk Road Conifer, CO 80433  
(303) 670-1099 x11 Patrick.McAllister@Turnstiles.us





# The High-Security Series

HS427-S • HS430-S

## Full-Height Turnstile (Single) • Interior & Exterior Application

HS439-S • HS448-S

### Applications:

Ideal for controlling orderly flow of foot traffic in both indoor and outdoor settings

### Product Features:

**Materials and Finishes available in your choice of:**

- Hot dipped galvanized carbon steel
- Polyester enamel on carbon steel (standard color is black/ other colors available upon request)
- Our signature 304 Stainless steel/ No. 4 satin finish

### Design & Construction:

- Designed for secure operation with aesthetics in mind
- Featuring fully welded exterior components
- Minimal exposed hardware
- Heavy gauge materials meeting ASTM standards

### Controller &

#### Access Control Operation:

- Self-centering control head with adjustable hydraulic shock suppression
- Hardened tool steel locking bars, cam and roller assemblies
- Permanently lubricated bearings
- All units are available in clockwise, counter-clockwise or bi-directional passage

### Measures:

#### HS427-S

**Size of opening (pedestrian clearance)**

HS427-S 27" (686mm)

**Arm and Barrier Tubing Sizes**

1 1/2" diameter 14 gauge (38mm) - Standard

1 3/4" diameter 14 gauge (44mm) - Optional

Width	Depth
62" (1575mm)	54" (1372mm)

#### HS430-S

**Size of opening (pedestrian clearance)**

HS430-S 30" (762mm)

**Arm and Barrier Tubing Sizes**

1 1/2" diameter 14 gauge (38mm) - Standard

1 3/4" diameter 14 gauge (44mm) - Optional

Width	Depth
66" (1676mm)	56" (1422mm)

**Measures: (continued)**

#### HS439-S

**Size of opening (pedestrian clearance)**

HS439-S 39" (991mm)

**Arm and Barrier Tubing Sizes**

1 3/4" diameter 14 gauge (44mm)

Width	Depth
84" (2134mm)	68" (1727mm)

#### HS448-S

**Size of opening (pedestrian clearance)**

HS448-S 48" (1219mm)

**Arm and Barrier Tubing Sizes**

1 3/4" diameter 14 gauge (44mm)

Width	Depth
106" (2692mm)	93" (2362mm)

### All models:

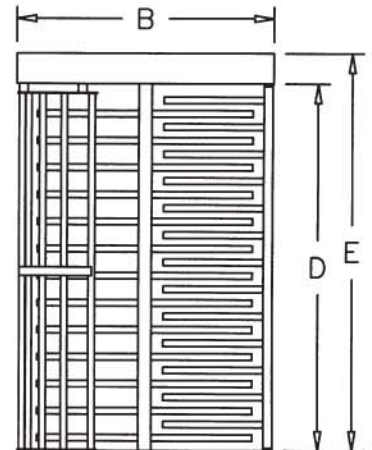
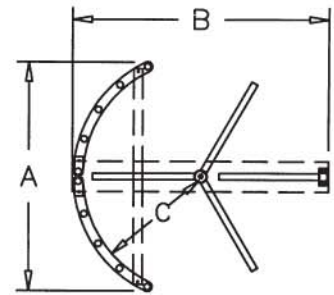
- Overall exterior height 91" (2311mm)
- Pedestrian walk through height 84" (2134mm)

### Options:

- Electronic locking module featuring heavy-duty 24 vdc pull-type industrial solenoids and card reader interface
- Available in Fail-Safe (open on power failure) or Fail-Lock (lock on power failure modes)
- Can interface with card readers, computer attendance systems, coin and token acceptors, push buttons, wireless remote controls and metal detectors
- Electronic 6 digit resetable counter with LCD display and ten-year lithium battery
- Vertical Graphic Array (VGA) red x / green arrow
- Additional options available on request

### Matching Swing Gate available

(see model HS336 Manual Passage Gate information)



### Electrical Specifications:

Command module input 110-240 VAC (2 amp-1 amp) 50-60 Hz; control voltage 24 VDC. All electrical components are UL recognized and CSA certified.

### Standards and Codes:

Austenitic stainless steel: ASTM A240, A249, A276

Hot rolled steel: AISI C-1020, AISI C-1018

Hot dipped galvanizing: ASTM A-143, ASTM A-153-80

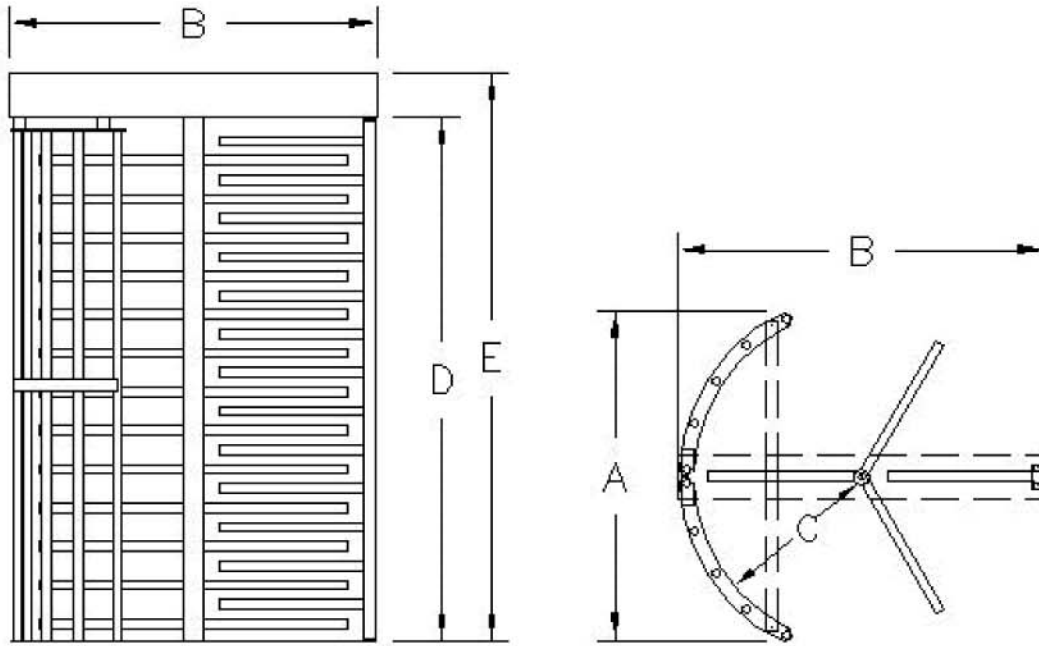
Stainless steel fasteners: ASTM A-320

American Welding Society (AWS) Standard D 1.1

### Warranty:

Units are warranted against defects in materials and workmanship for a period of one year from date of delivery. See warranty information for specific details.

8641 South Warhawk Road Conifer, CO 80433  
 (303) 670-1099 x11 Patrick.McAllister@Turnstiles.us



TYPE S-SINGLE

**Size Options (pedestrian clearance):**

	<b>Depth (A)*</b>	<b>Width (B)*</b>	<b>Passage Width (C)*</b>	<b>Passage Height (D)*</b>	<b>Overall Height (E)*</b>
<b>HS427-S</b>	54" 1327mm	62" 1575mm	27" 686mm	84" 2134mm	91" 2311mm
<b>HS430-S</b>	56" 1422mm	66" 1676mm	30" 762mm	84" 2134mm	91" 2311mm
<b>HS439-S</b>	68" 1727mm	84" 2134mm	39" 990mm	84" 2134mm	91" 2311mm
<b>HS448-S</b>	93" 2362mm	106" 2692mm	48" 1219mm	84" 2134mm	91" 2311mm