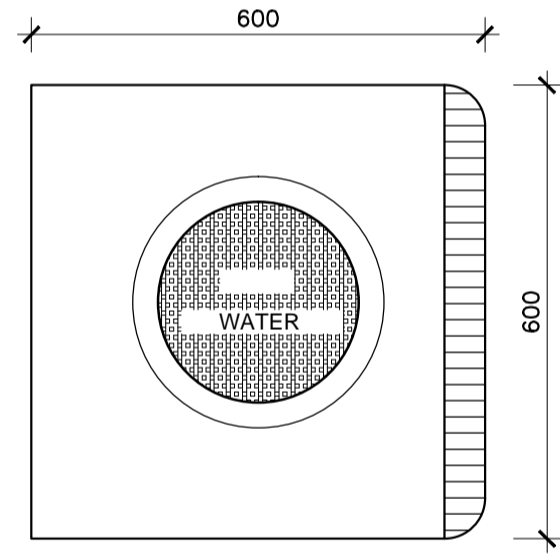


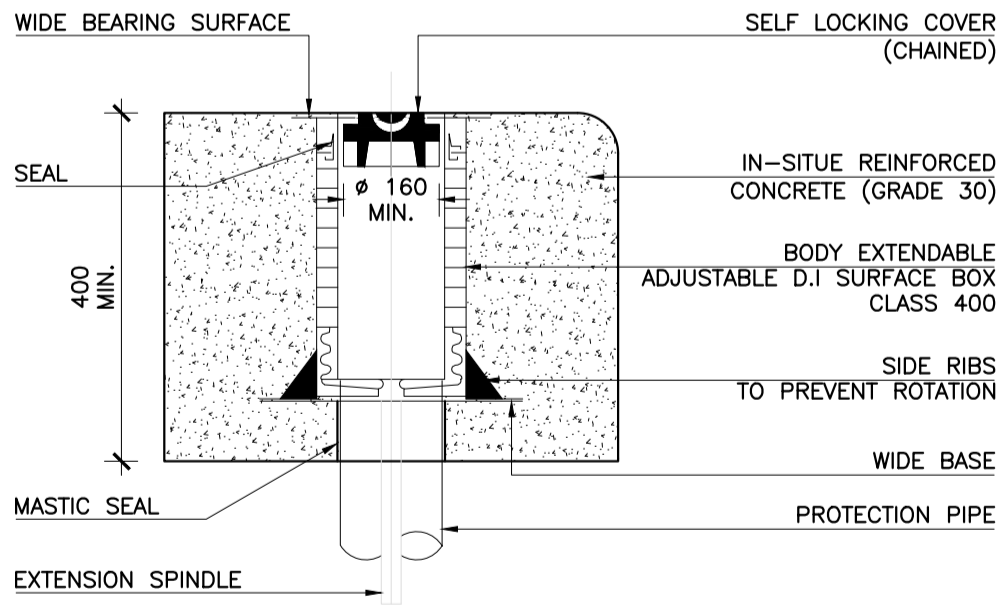
SURFACE BOX FOR VALVE IN BURIED CONDITION
(VALVE - < DN 300mm)

SCALE : 1/10



SURFACE BOX - PLAN

SCALE : 1/10



SURFACE BOX - DETAILS

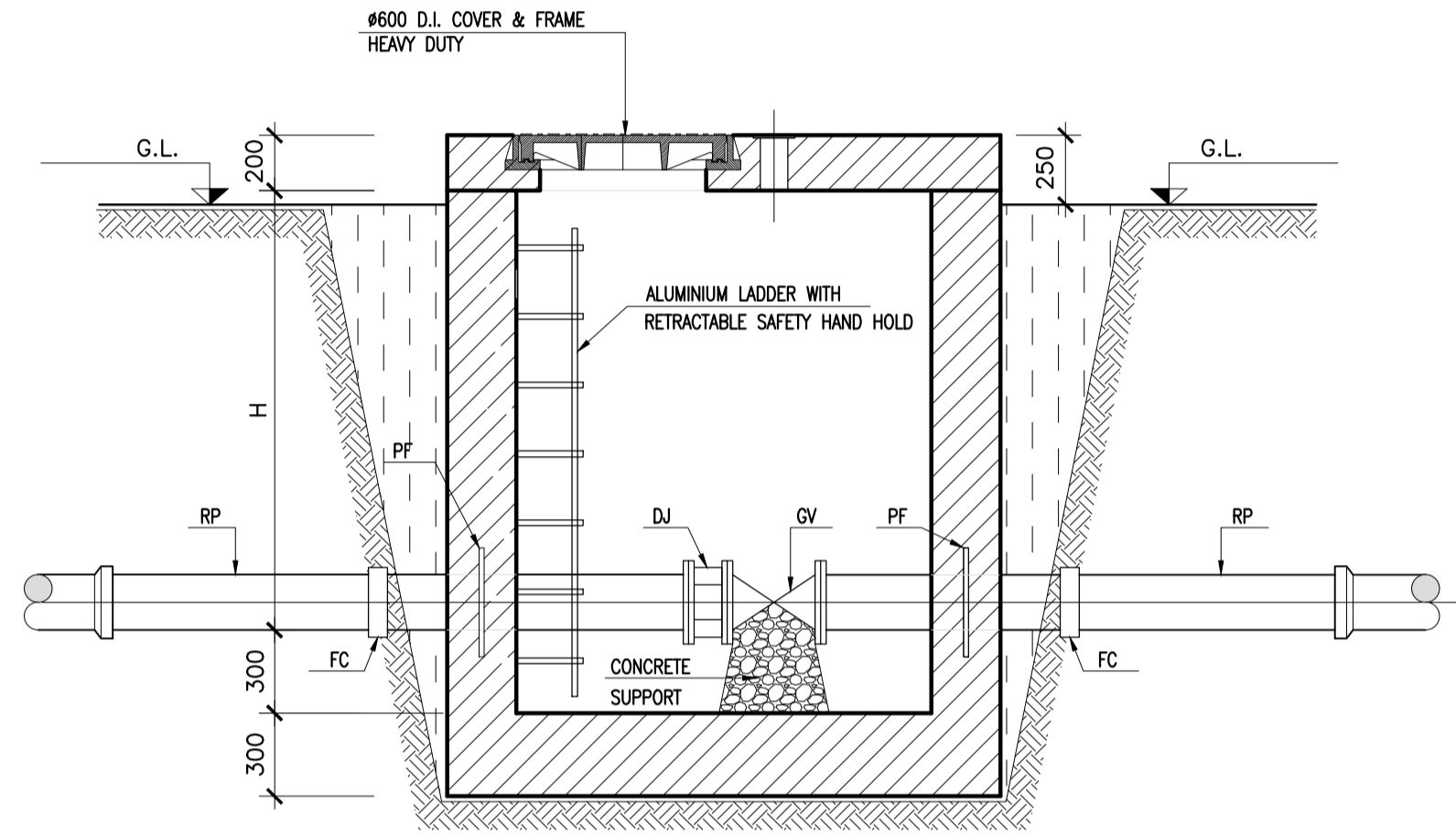
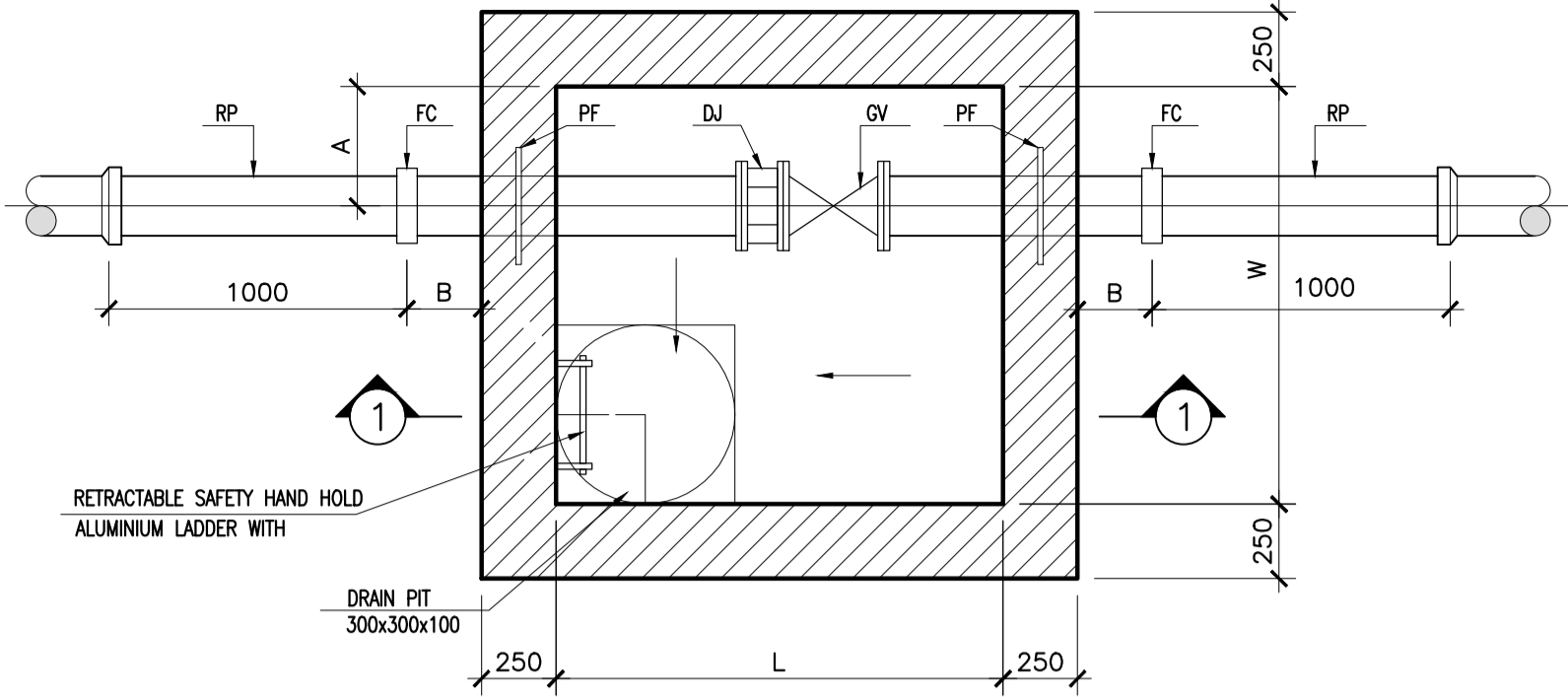
SCALE : 1/10

NOTES:

1. FLANGED GATE VALVE SHALL BE CONNECTED WITH THE MAIN PIPELINE WITH FLANGED CONNECTION OR FLANGED ADAPTOR AS PER SCOPE REQUIREMENTS
2. WRAPPING TAPE SHALL BE PROVIDED AROUND VALVE FOR PROTECTION OF BOLTS AND NUTS
3. THE SURFACE BOX SHALL BE ADJUSTABLE DUCTILE IRON CLASS 400. THE SURFACE BOX SHALL BE PROVIDED WITH SIDE RIBS TO PREVENT ROTATION.
4. THE VALVE PROTECTION PIPE SHALL BE ADJUSTABLE - EXTENDABLE TUBE (UPVC WITH MINIMUM DIAMETER 160MM AND WORKING PRESSURE 10 BAR
5. SURFACE BOX SHALL BE SET FLUSH WITH FINISH SURFACE IN PAVED STREET AT AND SET 150MM ABOVE FINISH SURFACE IN UNPAVED STREETS AND NATURAL GF
6. EXPOSED EDGES IN NATURAL GROUND INSTALLATION, SHALL HAVE CURVED FINIS

GATE VALVE CHAMBER
PLAN VIEW

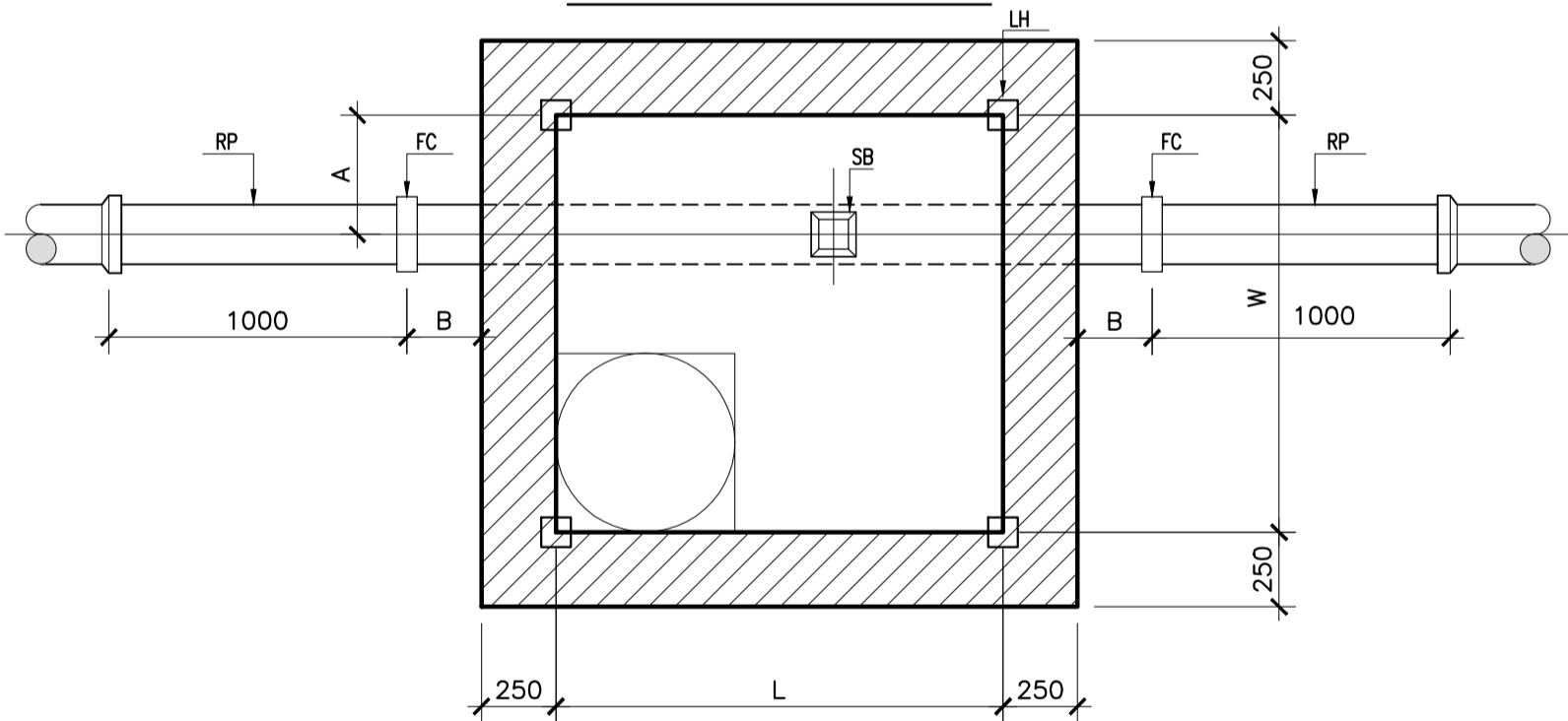
SCALE : 1/25



SECTION 1-1

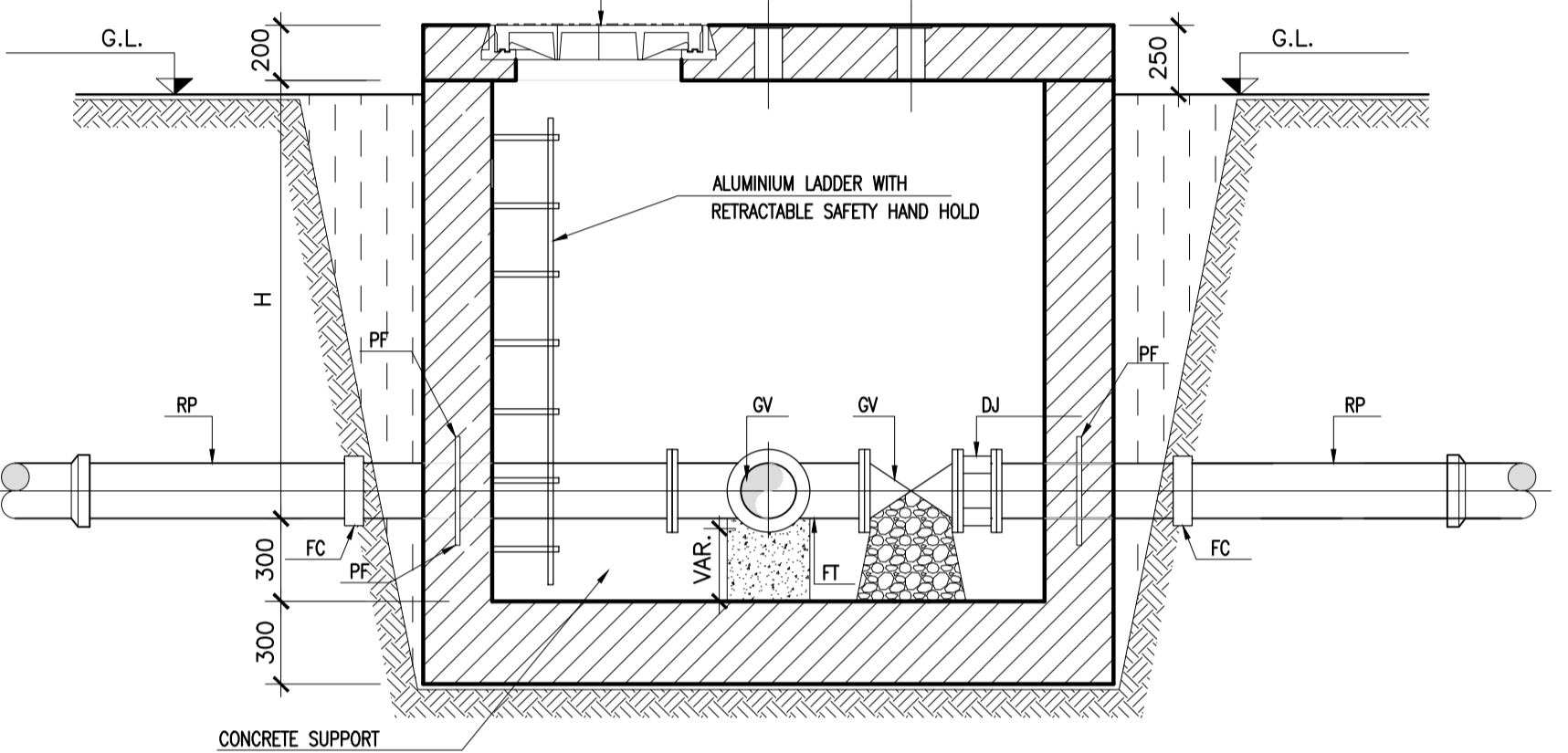
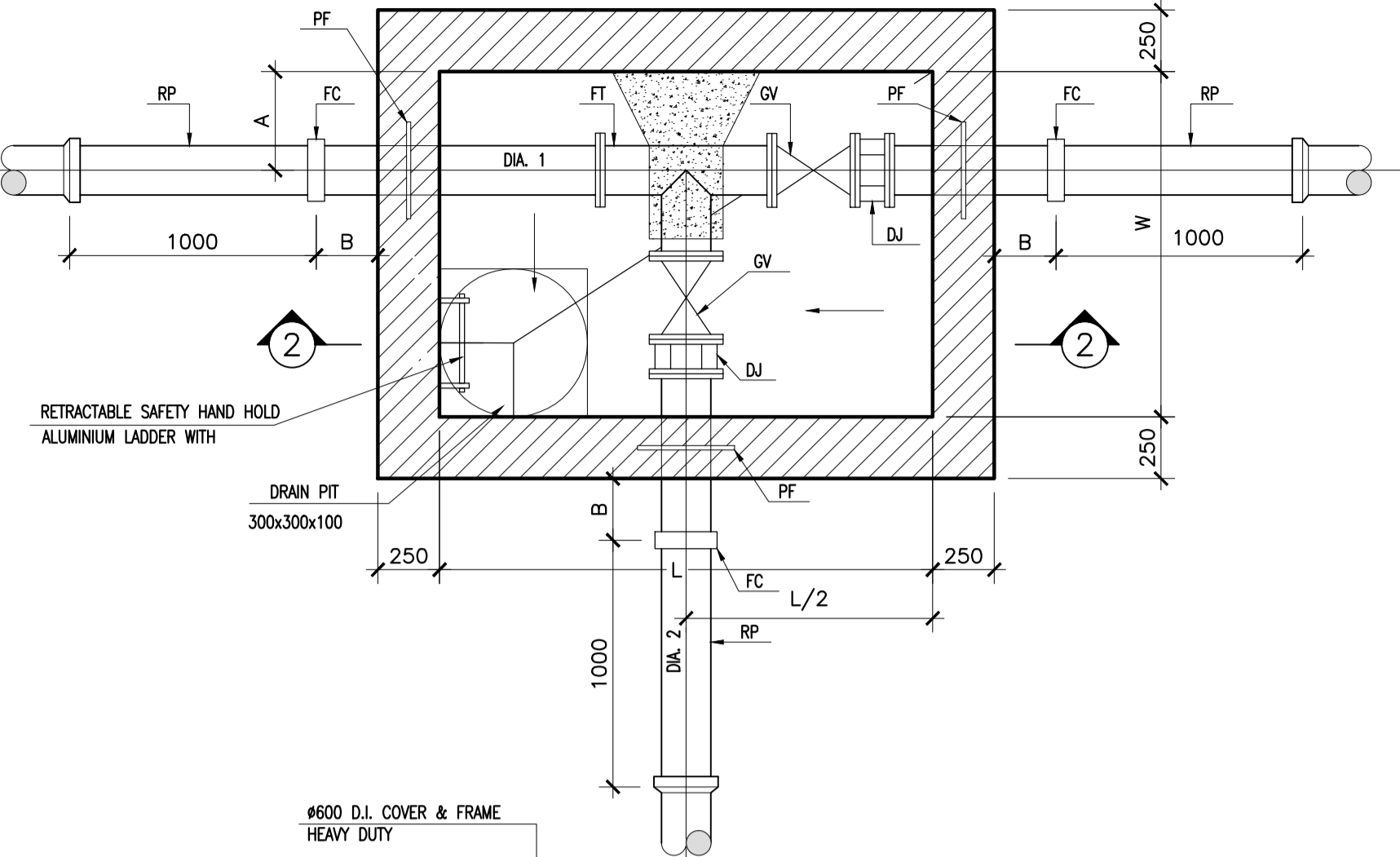
SCALE : 1/25

TYPICAL COVER SLAB



TEE BRANCH VALVE CHAMBRE
PLAN VIEW

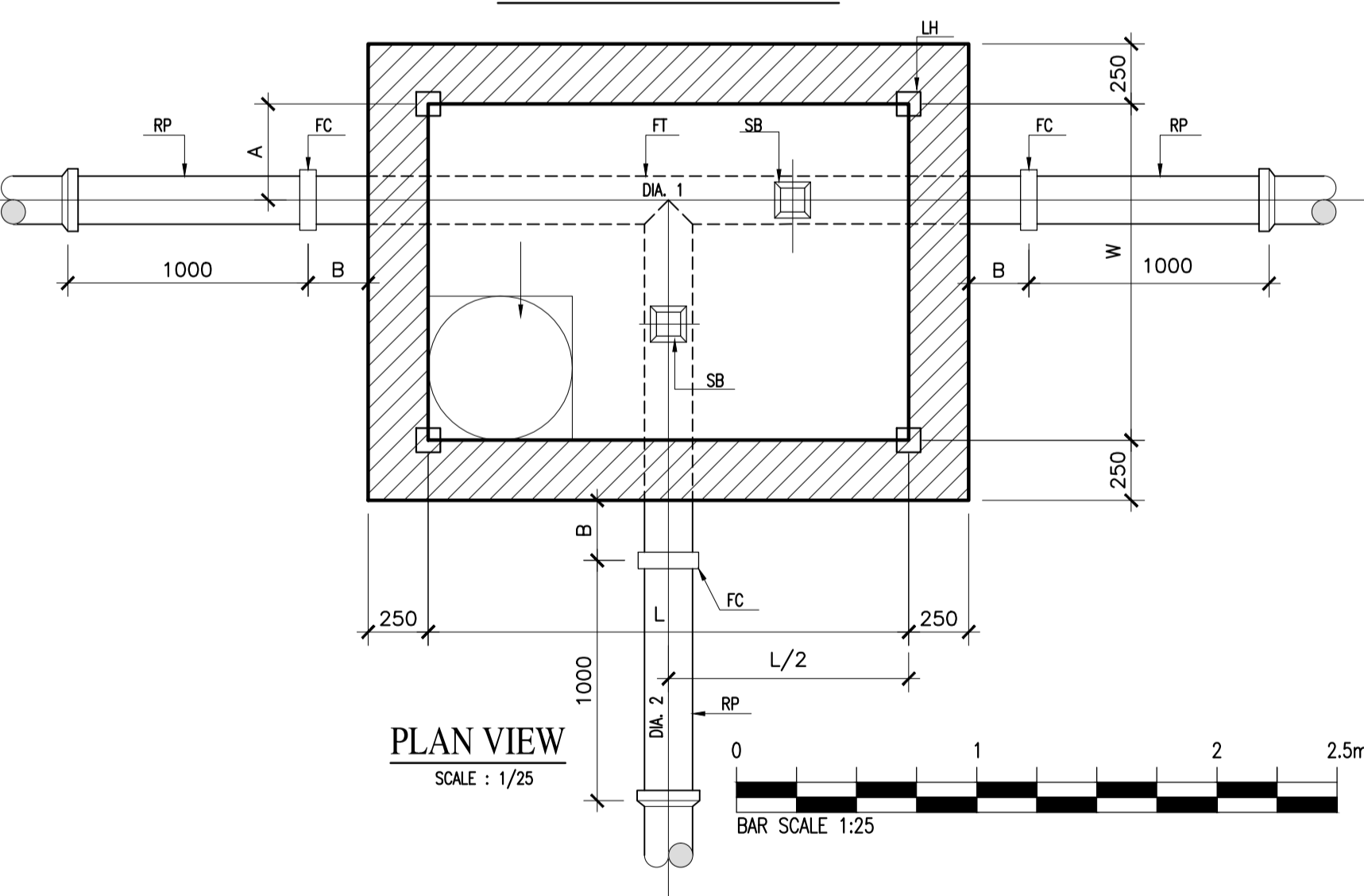
SCALE : 1/25



SECTION 2-2

SCALE : 1/25

TYPICAL COVER SLAB



PLAN VIEW

SCALE : 1/25



NOTES

- 1 - ALL DIMENSIONS ARE IN MM.
- 2 - CONTENT OF THIS DRAWINGS SHALL BE READ IN CONJUNCTION WITH THE RELEVANT CLAUSES OF TENDER DOCUMENTS: TECHNICAL SPECIFICATIONS.
- 3 - ALL PIPES INSIDE OF CHAMBER SHALL BE DUCTILE IRON PIPES.
- 4 - THE DEPTH (H) OF THE CHAMBERS DEPEND ON INVERT LEVEL OF THE PIPE.
- 5 - LOCATION OF PIPELINE CHAMBER TO SUIT ADJACENT SERVICES AND SURFACE BOXES.
- 6 - LOCATION OF SURFACE BOXES TO BE ADJUSTED TO SUIT.
- 7 - LIFTING HOOKS SHALL BE PROVIDED ON ALL COVER SLABS. REFER TO SUPERVISOR FOR INSTRUCTIONS.
- 9 - IN FLOOD AREAS BOLT DOWN TYPE MANHOLE COVERS MUST BE USED. REFER TO SUPERVISOR FOR INSTRUCTIONS.

LEGEND

- GL - GROUND LEVEL
- RP - ROCKER PIPE
- DJ - DISMANTLING JOINT
- FT - FLANGED TEE
- FC - FLEXIBLE COUPLING
- PF - PUDDLE FLANGE
- PRV - PRESSURE REDUCING VALVE
- GV - GATE VALVE
- SB - 150 X 150 SURFACE BOX TO BE CENTERED OVER VALVES
- LH - LIFTING HOOKS WITH R16 BARS ON COUNTERSUNK RECESS 100 X 100 X 75 DEEP INFILLED WITH LEAN MIX CONCRETE

REV.	DATE	DRAWN BY	CHECKED BY	APPROVED BY	MODIFICATION	STATUTS

UNITED NATIONS DEVELOPMENT PROGRAMME
LEBANON

NORTH LEBANON WATER SUPPLY
CONSTRUCTION OF WADI KHALED 2 WATER SUPPLY SYSTEM

GATE VALVE CHAMBER
LAYOUT & DETAILS

SCALE : -	DATE : SEPTEMBER 2014	DRAWING N° : WS-WK-251-A.dwg
-----------	-----------------------	------------------------------

LIBANCONSULT
Consulting Engineers

N° : W.S.W.K.2.5.1	REV. A
--------------------	--------