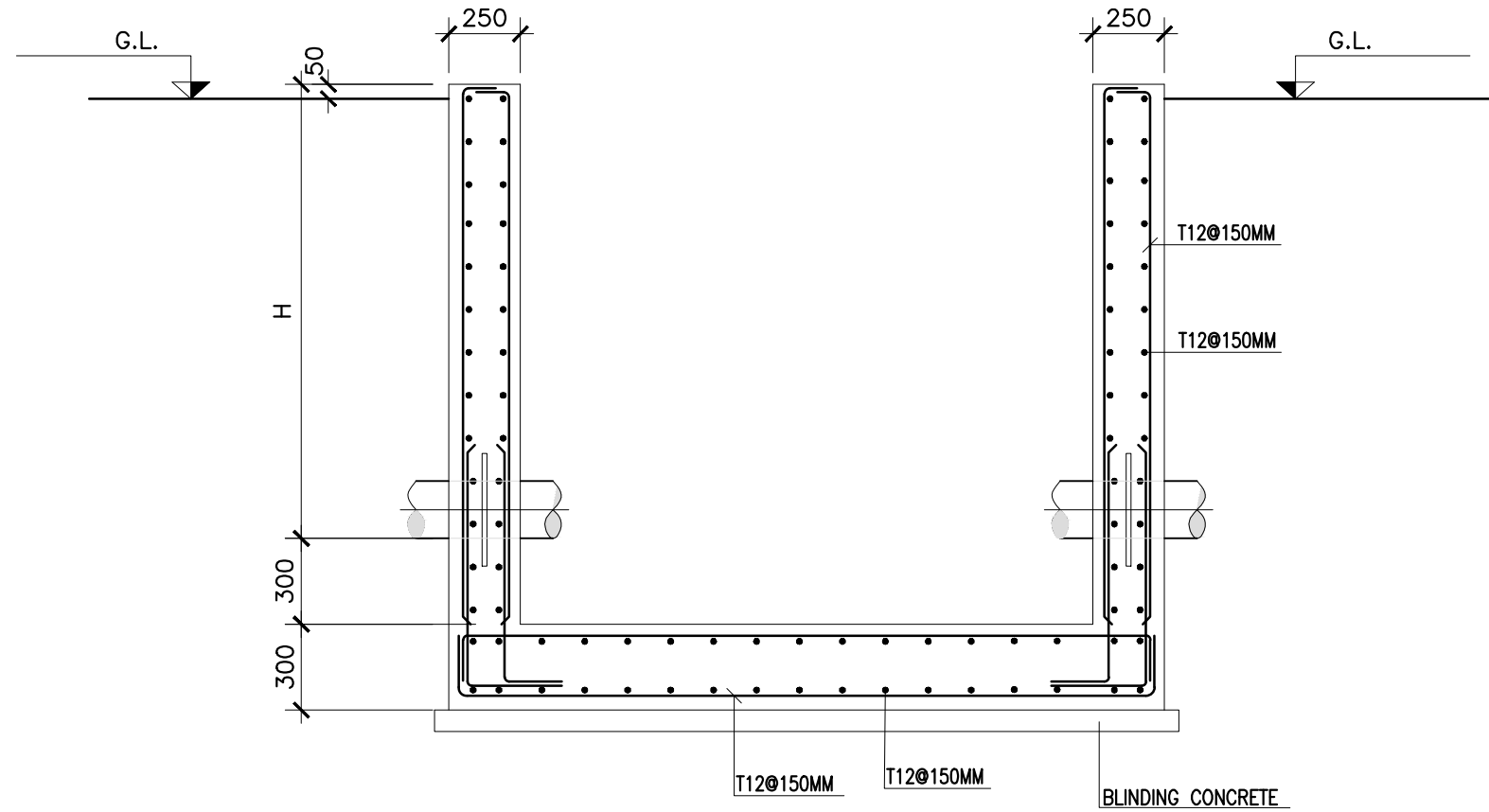


SECTION 1-1



SECTION 2-2

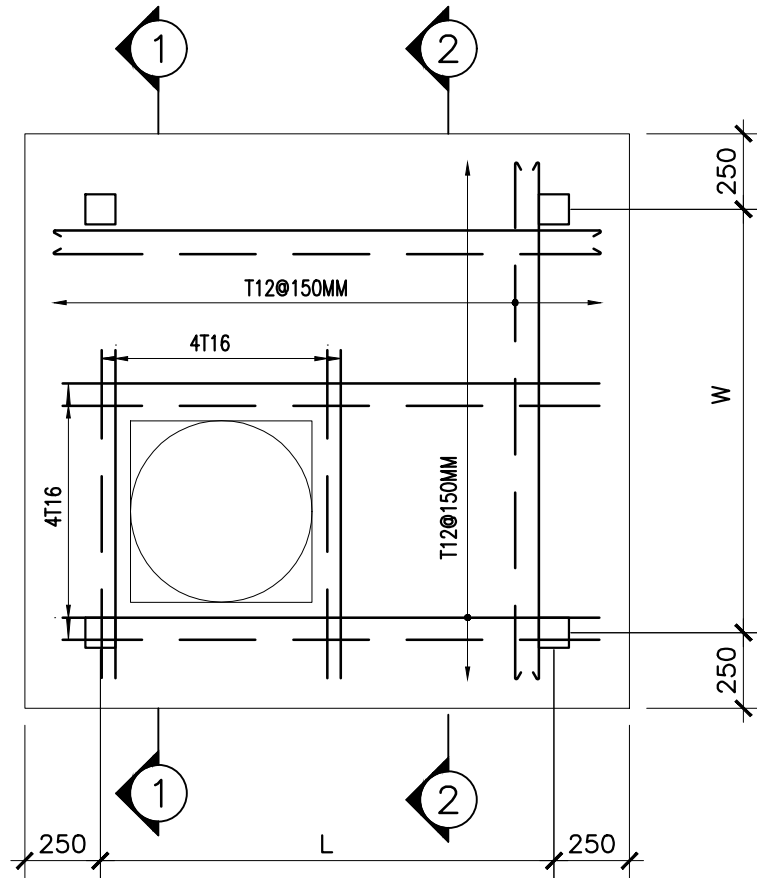
NOTES

- 1 - ALL DIMENSIONS ARE IN MM.
- 2 - CONTENT OF THIS DRAWINGS SHALL BE READ IN CONJUNCTION WITH THE RELEVANT CLAUSES OF TENDER DOCUMENTS: TECHNICAL SPECIFICATIONS.
- 3 - ALL PIPES INSIDE OF CHAMBER SHALL BE DUCTILE IRON PIPES.
- 4 - THE DEPTH (H) OF THE CHAMBERS DEPEND ON INVERT LEVEL OF THE PIPE.

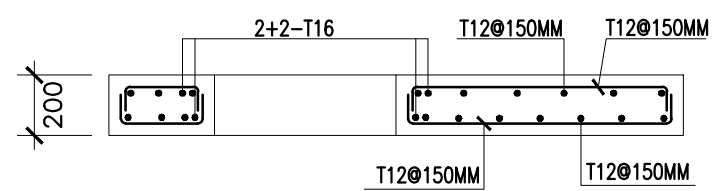
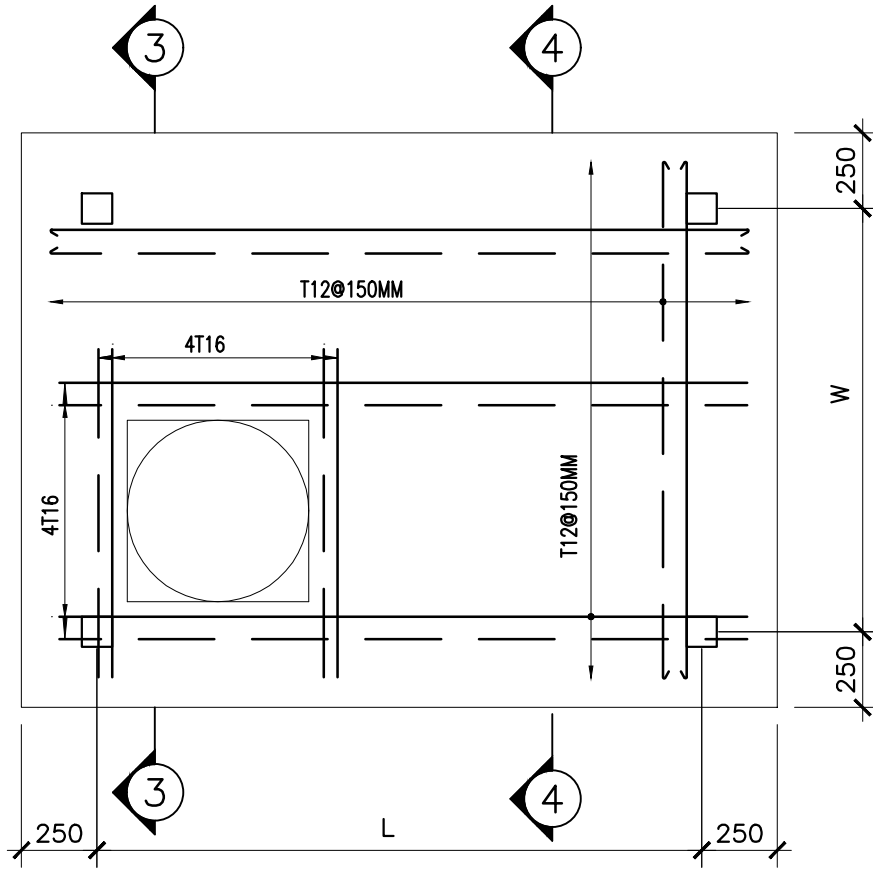
LEGEND:

GL - GROUND LEVEL
 — TOP STEEL
 — BOTTOM STEEL

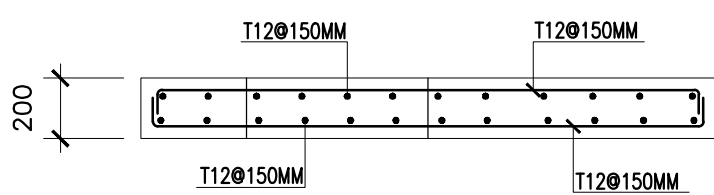
TYPICAL COVER SLAB



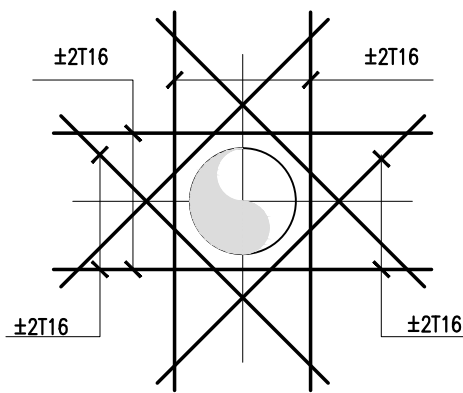
TYPICAL COVER SLAB



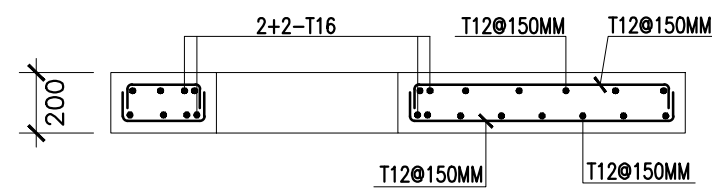
SECTION 1-1



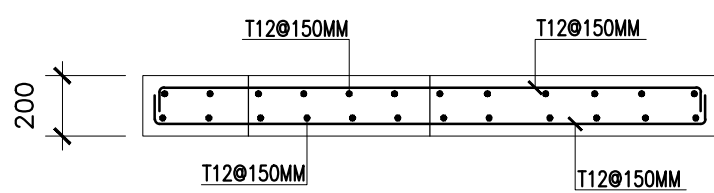
SECTION 2-2



ADDITIONAL BARS
 AROUND WALL OPENING(TYP)



SECTION 3-3



SECTION 4-4

REV.	DATE	DRAWN BY	CHECKED BY	APPROVED BY	MODIFICATION	STATUTS

UNITED NATIONS DEVELOPMENT PROGRAMME
 LEBANON

NORTH LEBANON WATER SUPPLY
 CONSTRUCTION OF WADI KHALED 2 WATER SUPPLY SYSTEM

GATE VALVE CHAMBER
 STEEL REINFORCEMENT

SCALE : -	DATE : SEPTEMBER 2014	DRAWING N° : WS-WK-252-A.dwg
LIBANCONSULT Consulting Engineers		N° : W.S.W.K.2.5.2 REV. A