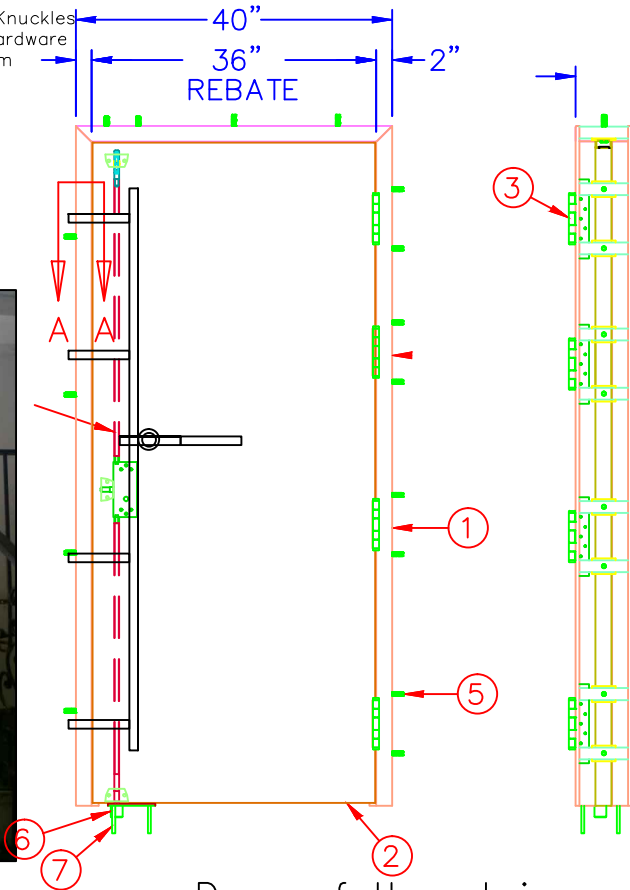
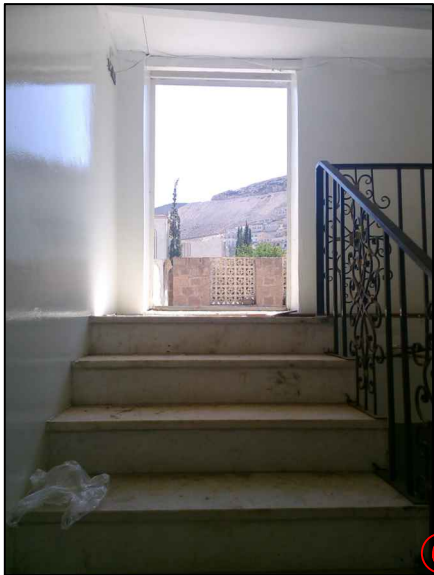


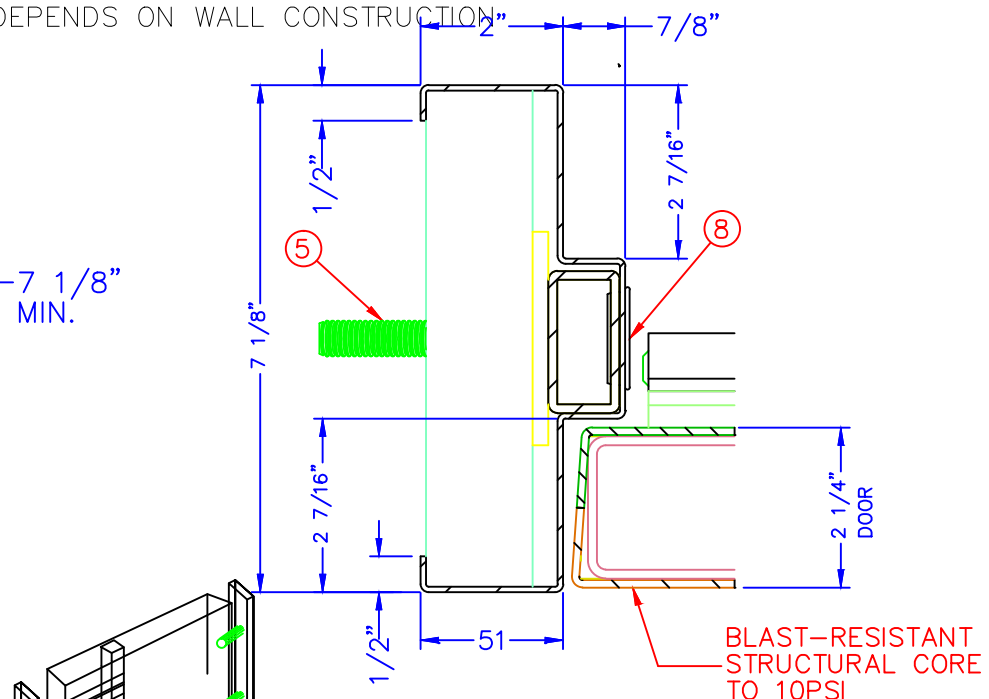
NOTES:

- 1. ARCHITECT AND/OR CONTRACTOR TO ENSURE WALL CAN RESIST APPLIED LOADING.
- 2. QUANTITY OF SCREWS OR CONCRETE ANCHORS AND THEIR LOCATION DEPENDS ON WALL CONSTRUCTION AND THUS ARE SUBJECT TO CHANGE

- 1-Blast-Resistant External Frame size 20cm X10 X3mm
- 2- Blast-Resistant Internal Frame size 50 X100 X3mm
- 3- Steel door full metal plate 8mm side to side thickness
- 4-20 cm Heavy Weight Hinge w/ Welded Knuckles
- 5-Surface-Mount 3-pt Blast-Resistant Hardware
- 6-Hex Bolt or Concrete Anchor size 25 cm
- 7-Floor Plate Thickness 6mm
- 8- Flat-Head Concrete Anchor
- 9-Hole Plug - 1.25" Hole



Door of the staircase



SECTION A-A

| Item No. | Title |
|----------|---|
| 1 | 10 psi Blast-Resistant Frame |
| 2 | 10 psi Blast-Resistant Door |
| 3 | 6" Heavy Weight Hinge w/ Welded Knuckles |
| 4 | Surface-Mount 3-pt Blast-Resistant Hardware |
| 5 | Hex Bolt or Concrete Anchor |
| 6 | Floor Plate |
| 7 | Flat-Head Concrete Anchor |
| 8 | Hole Plug - 1.25" Hole |