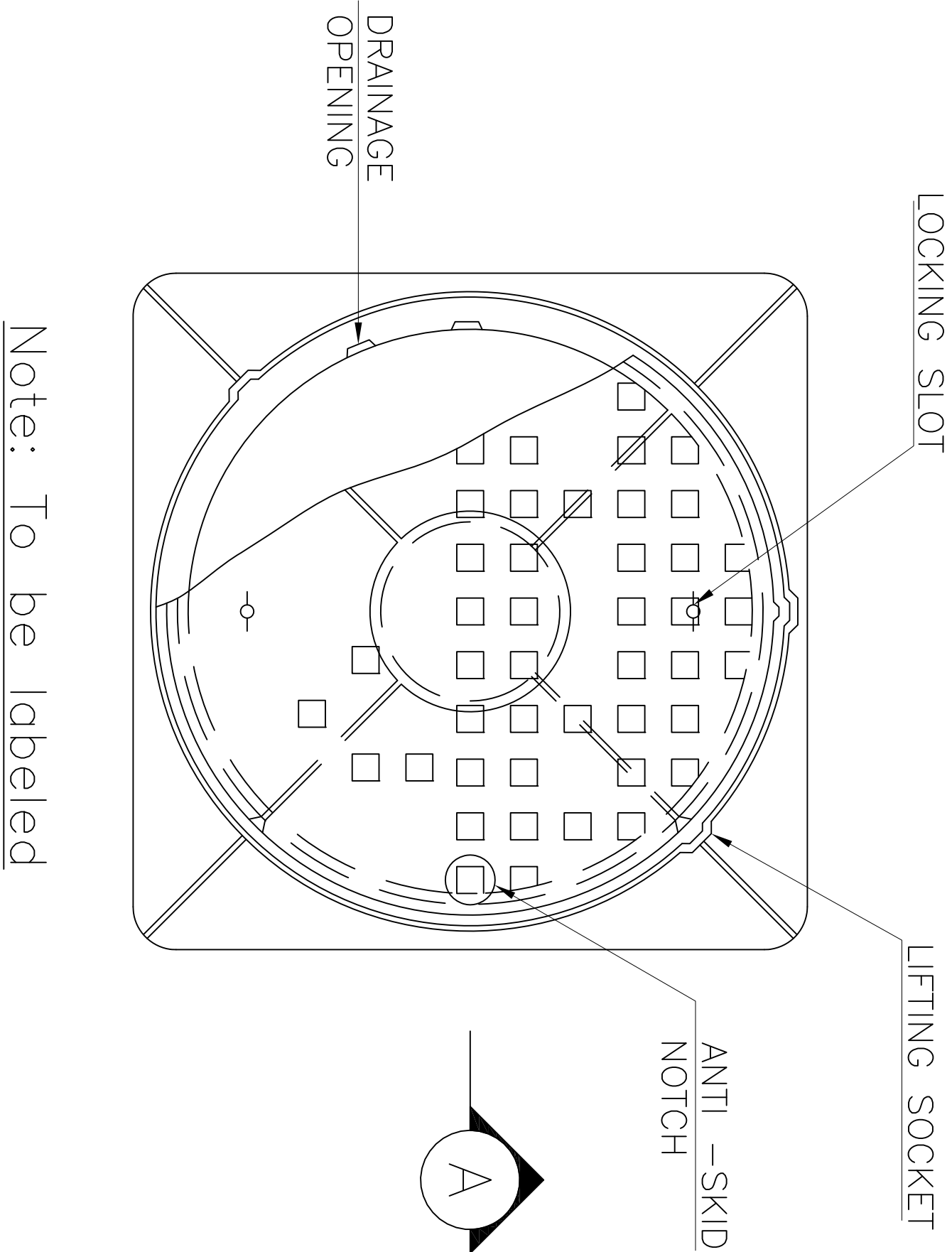
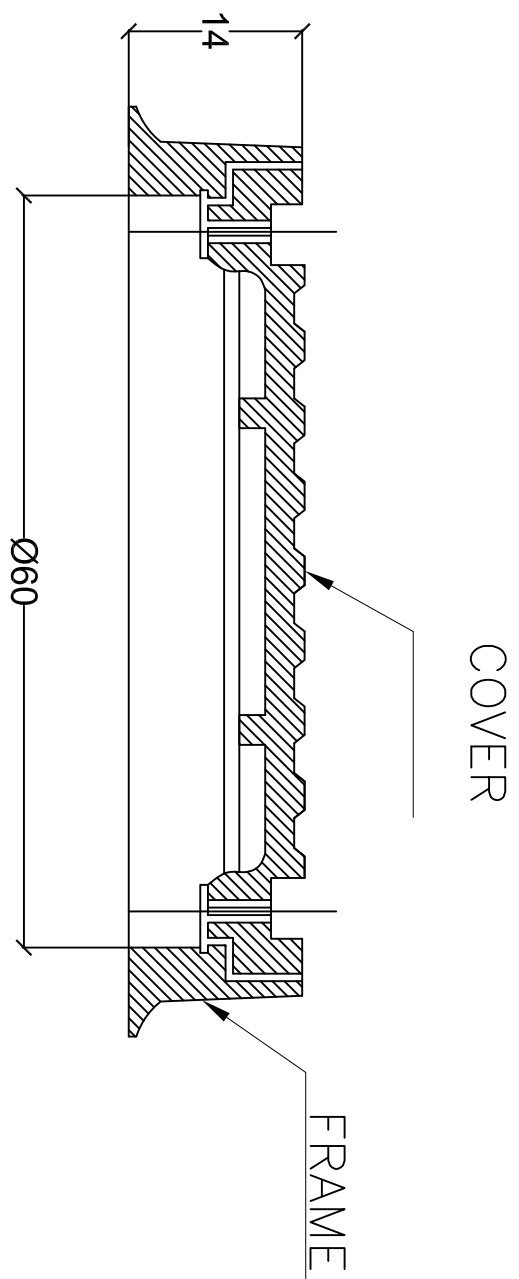


DETAIL A

MANHOLE FRAME AND COVER



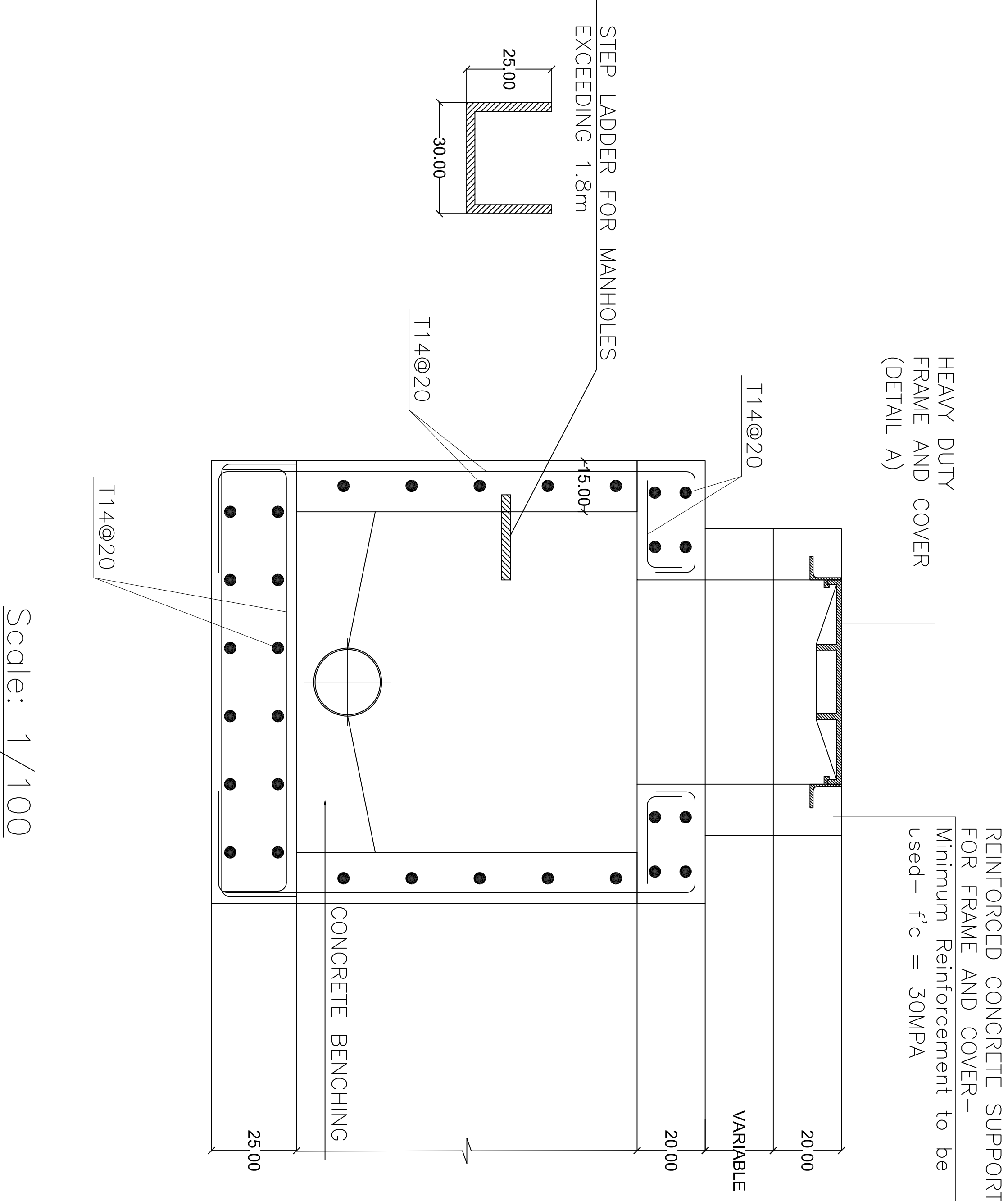
Note: To be labeled



SECTION A-A

Not to scale

TYPICAL REINFORCEMENT FOR MANHOLES



Scale: 1 / 100

NOTES:

1. The condition of the existing wastewater lines is to be verified by the contractor on site.
2. Where a new line is connected to an existing manhole, the invert level of the manhole should be verified on site by the contractor, and the contractor will take all the measures to deal with flow.
3. Where the pipe cover is less than 70 cm a concrete surround should be executed.
4. Where there is an intersection with a water supply line a concrete surround will be executed.
5. The new executed line will replace the existing one which will be disconnected by the contractor when the new system will be put on service.
6. For the house connections refer to the particular specifications.
7. For manholes details refer to the particular specifications and standard drawings.
8. For trench details refer to particular specifications and standard drawings.

UNHABITAT
FOR A BETTER URBAN FUTURE



Iqleem el Kharroub
Regional Technical Office

Sewage Project in
Mazboud

LENGTH: 1070 m
MANHOLES: 55 UNIT

WASTE WATER
GRAVITY LINES

SCALE: 1/1000