

NOTES:

MECHANICAL DRAWINGS

Jerusalem Design Center

Jerusalem Design Center

DESIGNED BY:

March, Ibrahim Alhindi

Architect Works

Mechanical Works



European Union

Empowered forces. Reliant partners.

Republic of the Hashemite Kingdom of Jordan

Ministry of Public Works and Urban Planning

OLD CITY - JERUSALEM

Jerusalem Design Center

Jerusalem Design Center

PROJECT NAME

LIST OF MECHANICAL DRAWINGS

SCALE

N.T.S.

EDITOR

01

SHEET NO.

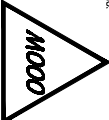
For review

For approval

For tender

For construction

01/02/2025



JERUSALEM DESIGN CENTER

P.O.Box 132/6, Jerusalem Tel. 02-2343696 Fax. 02-2343718

NOTES:

LIST OF MECHANICAL DRAWINGS

| | |
|------|--|
| M000 | COVER |
| M001 | LIST OF MECHANICAL DRAWINGS |
| M100 | MECHANICAL WORKS-SITE PLAN |
| M101 | SANITARY PLAN – GROUND FLOOR |
| M200 | WATER PIPING PLAN – GROUND FLOOR |
| M201 | WATER PIPING PLAN – TOP ROOF |
| M300 | UNDERFLOOR HEATING PLAN – GROUND FLOOR |
| M400 | AC & VENTILATION PLAN – GROUND FLOOR |
| M401 | AC & VENTILATION PLAN – TOP ROOF |
| M600 | EQUIPMENTS SCHEDULE |
| M601 | SCHEMATIC FOR HEAT & WATER SYSTEM |
| M602 | MECHANICAL DETAILS |

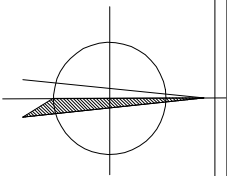


European Union
Empowered forces.
Resilient solutions.

Municipality of Jerusalem
Redevelopment of the Haram al-Aqsa and
Historic Area of Shu'aib
OLD CITY - JERUSALEM

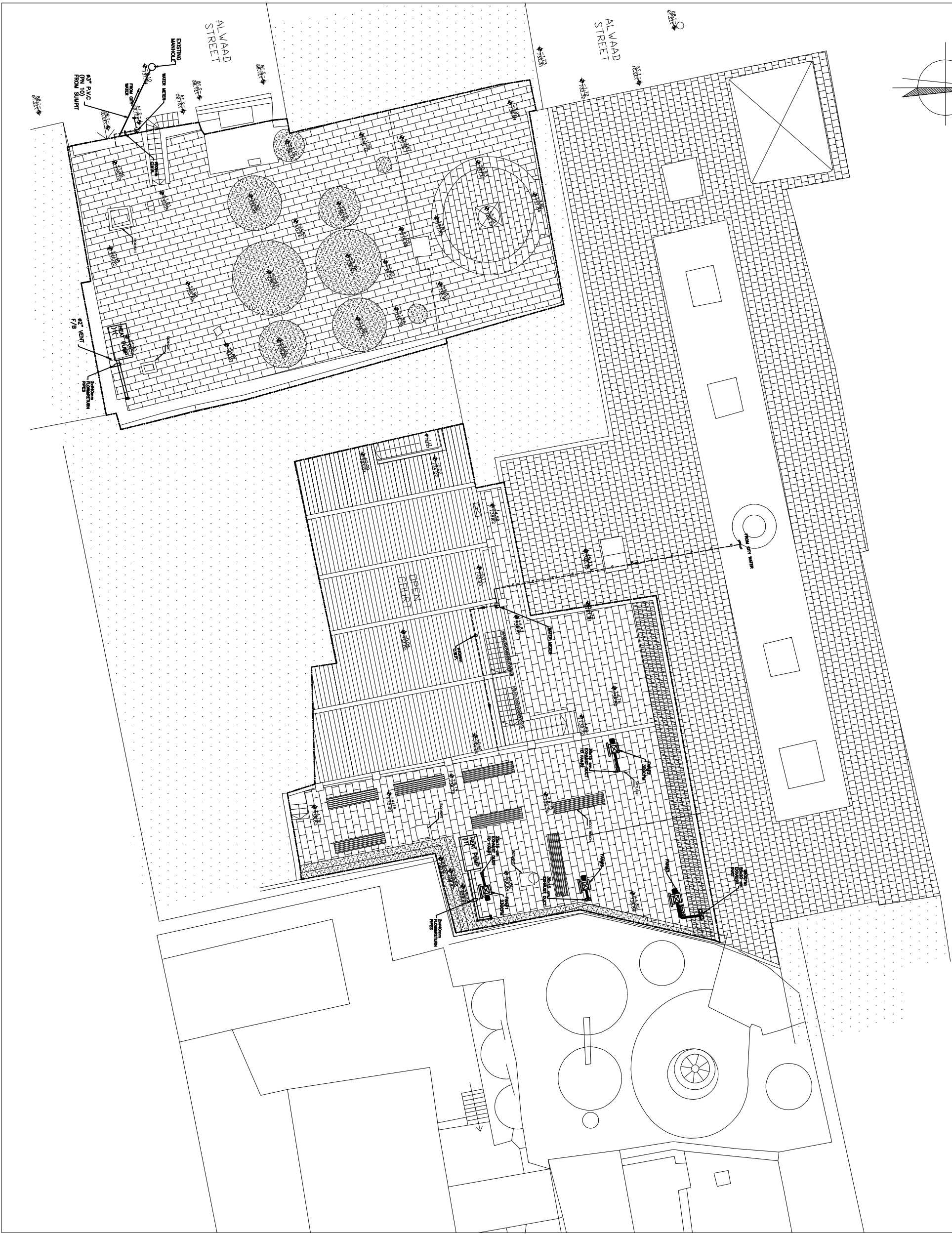


| | |
|---|--|
| SCALE | EDITOR |
| N.T.S. | 01 |
| <input type="checkbox"/> For review | <input type="checkbox"/> For approval |
| <input type="checkbox"/> For approval | <input checked="" type="checkbox"/> For tender |
| <input type="checkbox"/> For construction | |
| M001 | |



NOTES:

- 3" PVC PN10
(2% SLOPE)
- DRAIN & VENT PIPE
- FLOW HEATING PIPE
- RETURN HEATING PIPE



JERUSALEM DESIGN CENTER

DESIGNED BY:
March, Ibrahim Alhindi

Electrical Works

Mechanical Works



Rehabilitation Of the Museum of Ayn and Museum of Shifa
OLD CITY - JERUSALEM



SHEET NO.

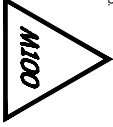
MECHANICAL WORKS
SITE PLAN

SCALE
1/100

01

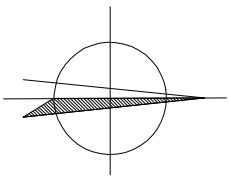
- ☐ For review
- ☐ For approval
- ☒ For tender
- ☐ For construction

01/01/2018

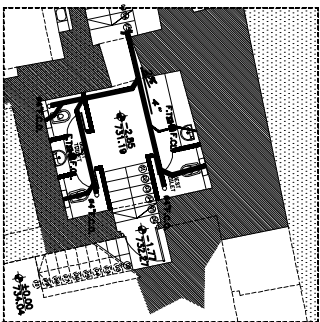


JERUSALEM DESIGN CENTER

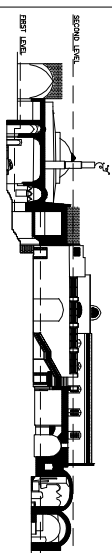
P.O. BOX 19276, JERUSALEM TEL. 02-2343695 FAX. 02-2343718



GUEST TOILET



HAMMAM ENTRANCE
LEVEL = -3.60 / 730.44
SCALE 1:100



NOTES:

- 0. S₂ DRAIN PIPE DIAMETER (ø) SLOPE (S)
- 4" DRAIN PIPE (2% SLOPE)
- 2" DRAIN PIPE (2% SLOPE)
- 3" PVC PN10 (2% SLOPE)
- 4" FLOOR TRAP
- F.C.L. FLOOR COLLECTOR
- T/A TO ABOVE
- DRAIN & VENT PIPE

Jerusalem Design Center

March, Ibrahim Alhindi

eite

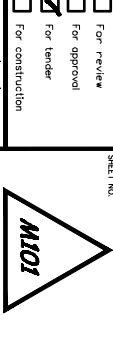


Ministry of Planning and Economic Cooperation
Jerusalem



GROUND FLOOR
SANITARY PLAN

1/100



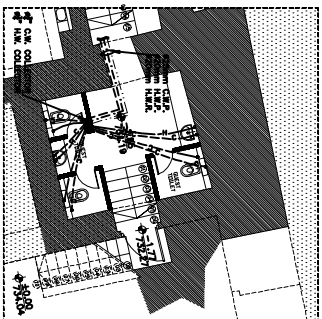
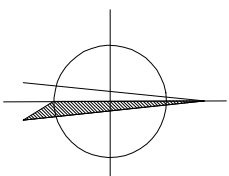
JERUSALEM DESIGN CENTER

P.O. Box 132/6, Jerusalem Tel. 02-2343895 Fax. 02-2343778

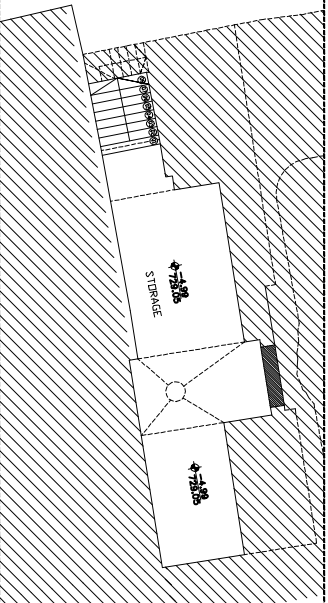
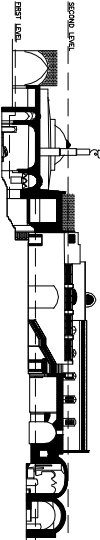


FURNACE
LEVEL = -4.99 / 729.05
SCALE 1:100

FIRST LEVEL - HAMMAM ALAIN & HAMMAM ASHIFA,
LEVEL = ±0.00 / 734.04
SCALE 1:100



HAMMAM ENTRANCE
LEVEL = -3.60 / 730.44
SCALE 1:100



SUMPT ROOM
LEVEL = -4.99 / 729.05
SCALE 1:100

FIRST LEVEL – HAMMAM ALAIN & HAMMAM ASHIFA,
LEVEL = ±0.00 / 734.04
SCALE 1:100

NOTES:

- HOT WATER PIPE
- COLD WATER PIPE
- HOT WATER PEX PIPE
- COLD WATER PEX PIPE
- FIRE HOSE CABINET

Jerusalem Design Center

March, Ibrahim Alhindi



Rehabilitation Of the Hammam of Ayn and Hammam of Shifa Old City - Jerusalem

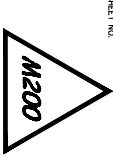


GROUND FLOOR
WATER PIPING PLAN

1/100

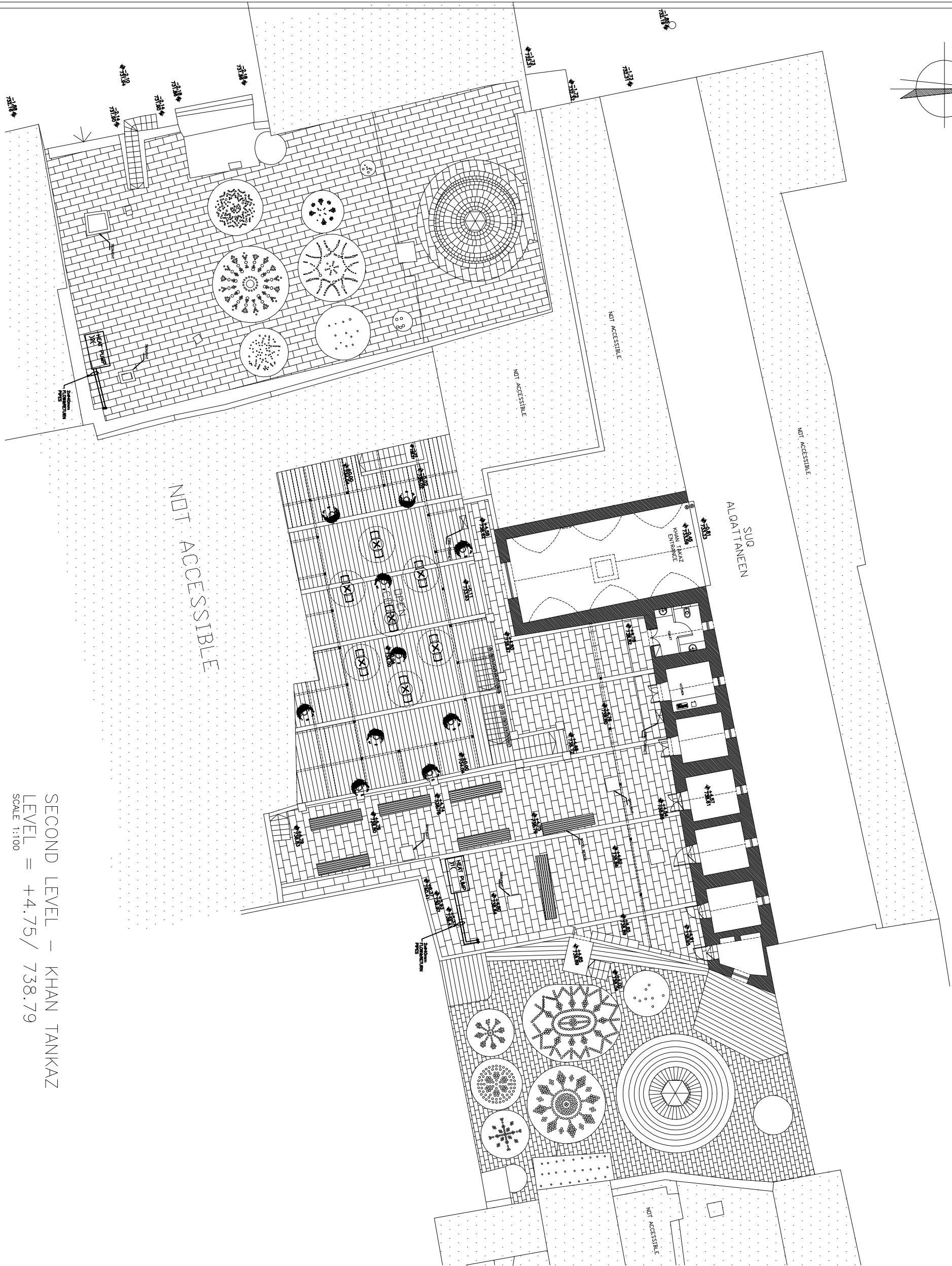
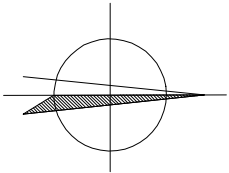
01

- For review
- For approval
- For tender
- For construction



Jerusalem Design Center

P.O. Box 132/6, Jerusalem Tel. 02-2343895 Fax. 02-2343718



NOTES:

- HOT WATER PIPE
- COLD WATER PIPE
- HOT WATER PEX PIPE
- COLD WATER PEX PIPE
- FIRE HOSE CABINET

JERUSALEM DESIGN CENTER

March, Ibrahim Alhindi

alite
Mechanical & Electrical Consultancy



Rehabilitation Of the Mausoleum of Ayn and Mausoleum of Sufi
OLD CITY - JERUSALEM



TOP ROOF
WATER PIPING PLAN

SCALE: 1/100

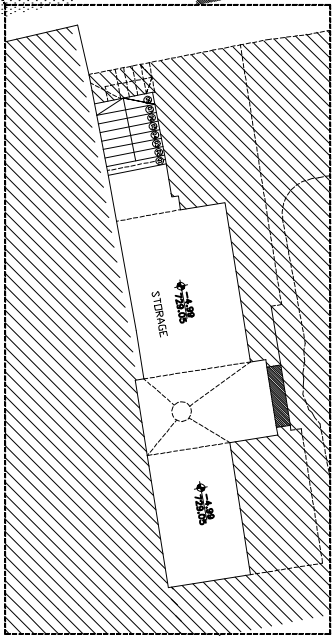
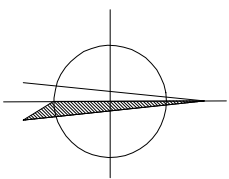
01

- For review
- For approval
- For tender
- For construction

M201

JERUSALEM DESIGN CENTER

P.O.Box 132/6, Jerusalem Tel. 02-2343495 Fax. 02-2343718



FURNACE
LEVEL = -4.99 / 729.05
SCALE 1:100



Electrical Work

Chemical Mo

elite
Mechanical & Electrical Consultants




European Union Empowered lives.
Resilient nations.

**Rehabilitation Of the Hamman al-Ayn and
Hamman al Shifa
Old City - JERUSALEM**

GROUND FLOOR
R FLOOR HEATING PLAN

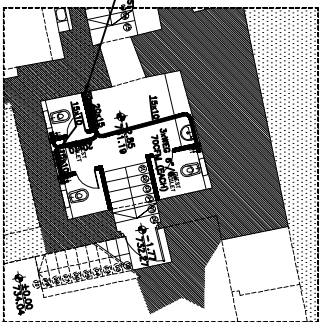
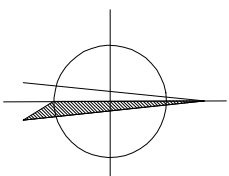
EDITION: **01** 1/100

☐ For review
☒ For approval
☐ For tender
☐ For construction

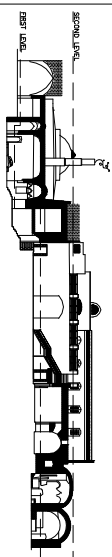


JERUSALEM DESIGN CENTER
Architects Engineers & Consultants

P.O.Box 19276, Jerusalem Tel. 02-2343696 Fax. 02-2343719



HAMMAM ENTRANCE
LEVEL = -3.60 / 730.44
SCALE 1:100



NOTES:

- CEILING EXHAUST GRILL (WITH DAMPER)
- INDOOR SPLIT UNIT
- OUTDOOR UNIT
- EXHAUST FAN
- WALL EXHAUST GRILL

JERUSALEM DESIGN CENTER

March, Ibrahim Alhindi



Rehabilitation Of the Hammam el-Ayn and Hammam el-Sheikh
OLD CITY - JERUSALEM



GROUND FLOOR
AC & VENTILATION PLAN

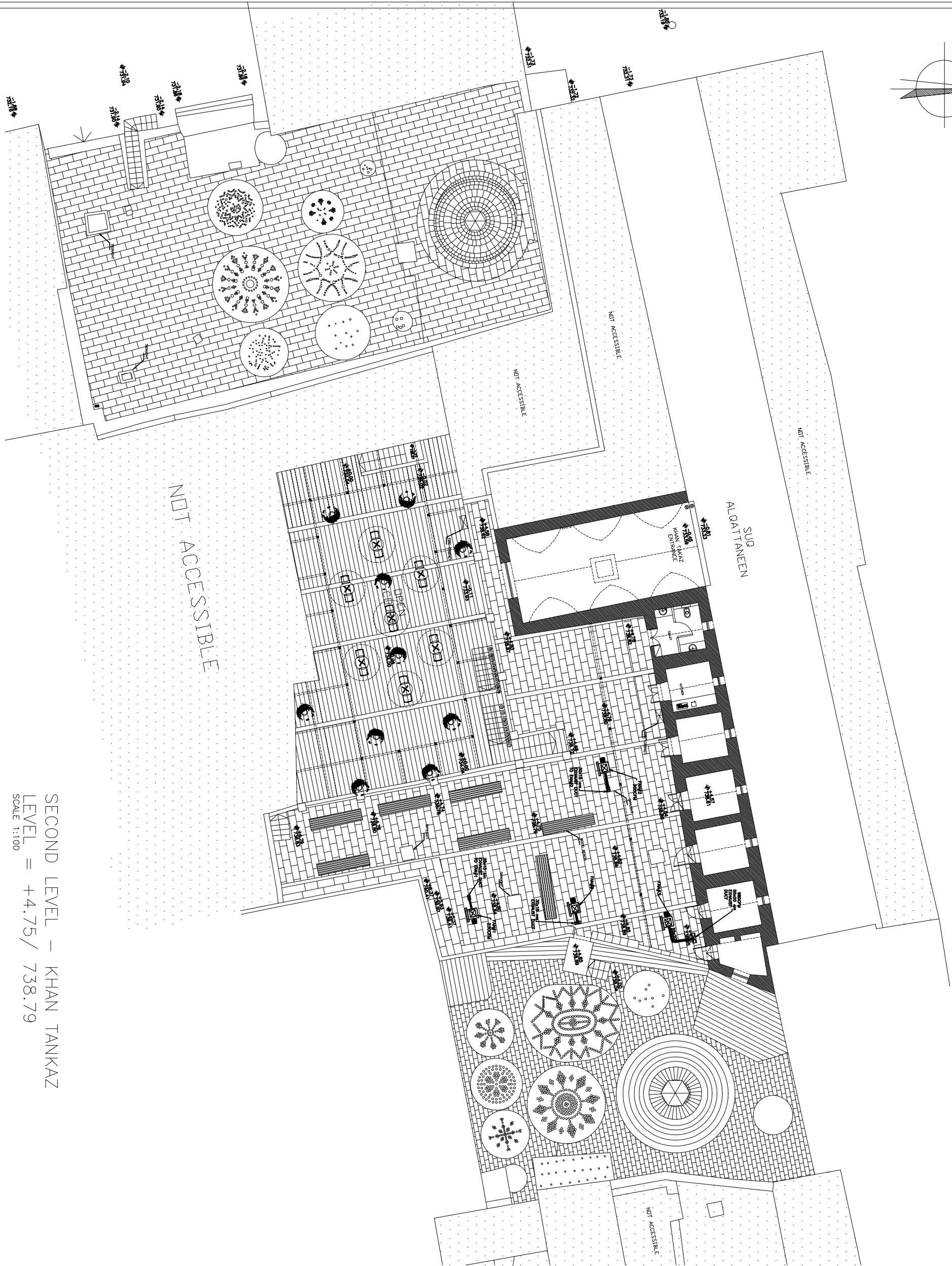
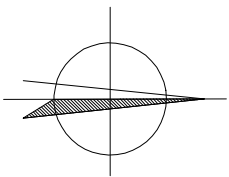
SCALE 1/100
SHEET NO. 01

| | |
|---|--|
| <input type="checkbox"/> For review | |
| <input type="checkbox"/> For approval | |
| <input type="checkbox"/> For tender | |
| <input type="checkbox"/> For construction | |



FURNACE
LEVEL = -4.99 / 729.05
SCALE 1:100

FIRST LEVEL – HAMMAM ALAIN & HAMMAM ASHIFA,
LEVEL = ±0.00 / 734.04
SCALE 1:100



NOTES:

CEILING EXHAUST GRILL
(WITH DAMPER)
CEG

INDOOR SPLIT UNIT

OUTDOOR UNIT

EXHAUST FAN

JERUSALEM DESIGN CENTER

March, Ibrahim Alhindi

Electrical Works

elite
Mechanical & Electrical Consultancy



**Rehabilitation Of the House of Ayn and
House of Sule**
OLD CITY - JERUSALEM



TOP ROOF
AC & VENTILATION PLAN

SCALE 1/100

EDITION 01

For review
For approval
For tender
For construction

M401

JERUSALEM DESIGN CENTER

P.O.Box 132/6, Jerusalem Tel. 02-2343895 Fax. 02-2343718

NOTES:

| FANS SCHEDULE | | | | | | | | | | | |
|---------------|------------------------|----------------------------|----------------------------|------------|-----------|------------|------|-------|---|------|---|
| FAN LABEL | TYPE | SYSTEM | LOCATION | FLOW (CFM) | HEAD (IN) | MOTOR DATA | | | | QNT. | |
| | | | | | | RPM | KW | VOLTS | Ø | HZ | |
| FAN#1 | INLINE CENTRIFUGAL FAN | VENTILATION FOR MECH. ROOM | TOP ROOF | 230 | 0.25 | 1450 | 0.10 | 220 | 1 | 50 | 1 |
| FAN#2 | INLINE CENTRIFUGAL FAN | VENTILATION FOR LECTURE R. | TOP ROOF | 300 | 0.25 | 1450 | 0.10 | 220 | 1 | 50 | 1 |
| FAN#3 | INLINE CENTRIFUGAL FAN | VENTILATION | TOP ROOF | 980 | 0.40 | 1450 | 0.11 | 220 | 1 | 50 | 1 |
| FAN#4 | INLINE MIXED FLOW FAN | VENTILATION | FIRST LEVEL | 700 | 0.32 | 1450 | 0.10 | 220 | 1 | 50 | 1 |
| FAN#5 | INLINE MIXED FLOW FAN | VENTILATION | FIRST LEVEL | 710 | 0.30 | 1450 | 0.10 | 220 | 1 | 50 | 1 |
| FAN#6 | INLINE MIXED FLOW FAN | VENTILATION | BASEMENT FLOOR LEVEL -4.99 | 200 | 0.30 | 1450 | 0.10 | 220 | 1 | 50 | 1 |
| FAN#7 | INLINE MIXED FLOW FAN | VENTILATION | ROOF OF TOILETS | 210 | 0.30 | 1450 | 0.10 | 220 | 1 | 50 | 1 |
| FAN#8 | INLINE MIXED FLOW FAN | VENTILATION | FIRST LEVEL | 470 | 0.30 | 1450 | 0.10 | 220 | 1 | 50 | 1 |
| FAN#9 | INLINE CENTRIFUGAL FAN | VENTILATION | TOP ROOF | 340 | 0.30 | 1450 | 0.10 | 220 | 1 | 50 | 1 |

| SPLIT UNIT SCHEDULE | | | | | | | | | | |
|---------------------|-----------------------|--------------|-------------------|--------------------|-------------------|-----------------|------|----|---|-----|
| INDOOR UNIT NO. | TYPE | AIR FLOW CFM | COOLING CAP. (KW) | SENSIBLE CAP. (KW) | HEATING CAP. (KW) | ELECTRICAL DATA | | | | |
| | | | | | | AMPER | VOLT | HZ | Ø | QTY |
| GROUND FLOOR | | | | | | | | | | |
| SP-01 | DECORATIVE SPLIT UNIT | 500 | 4.14 | 3.39 | 3.13 | 16C | 220 | 50 | 1 | 1 |
| SP-02 | DECORATIVE SPLIT UNIT | 500 | 3.65 | 3.09 | 2.59 | 16C | 220 | 50 | 1 | 1 |
| SP-03 | DECORATIVE SPLIT UNIT | 500 | 3.76 | 3.20 | 2.98 | 16C | 220 | 50 | 1 | 1 |
| SP-04 | DECORATIVE SPLIT UNIT | 860 | 8.68 | 6.71 | 6.62 | 3*10C | 380 | 50 | 3 | 1 |
| SP-05 | DECORATIVE SPLIT UNIT | 350 | 2.91 | 1.50 | 3.00 | 10C | 220 | 50 | 1 | 1 |
| SP-06 | DECORATIVE SPLIT UNIT | 820 | 5.86 | 4.65 | 5.20 | 20C | 220 | 50 | 1 | 2 |
| SP-07 | DECORATIVE SPLIT UNIT | 350 | 2.23 | 1.98 | 2.09 | 10C | 220 | 50 | 1 | 1 |
| SP-08 | DECORATIVE SPLIT UNIT | 350 | 1.92 | 1.67 | 1.26 | 10C | 220 | 50 | 1 | 1 |
| SP-09 | DECORATIVE SPLIT UNIT | 500 | 4.94 | 4.18 | 5.75 | 16C | 220 | 50 | 1 | 1 |

FOR THE RIGHT SIDE BUILDING

| UNDERFLOOR HEATING LOAD SCHEDULE | | | | | |
|----------------------------------|--------|-----------------------|------------------|-----------------------|-----------------|
| ZONES No. | LOOP # | LOOP LENGTH (m) | ROOM TEMP. °C | PYR SPACING (m) | LOAD (kW/MB) |
| 1 | 1 | 180 | 30 | 10 | 3,966 |
| | 1 | 360 | 40 | 6 | |
| | 2 | 240 | 40 | 6 | 11,820 |
| 2 | 3 | 130 | 40 | 6 | |
| | 1 | 330 | 22 | 15 | 4,193 |
| TOTAL | | | | | 19,979 |

FOR THE RIGHT SIDE BUILDING

[illegible]

FOR THE LEFT SIDE BUILDING







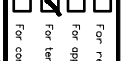
| PUMPS SCHEDULE | | | | | | | | | | | | |
|------------------|-------------------------------|------------|----------|------------|------|---|----------|---------|-------------|------|---|------------------|
| PUMP DESCRIPTION | LOCATION | FLOW (L/S) | HEAD (M) | MOTOR DATA | | | QUANTITY | | APPLICATION | TYPE | | |
| | | | | HPM | KW | ø | VOLTS | ON DUTY | | | STAND BY | TOTAL |
| SUB-1 | BASEMENT FLOOR LEVEL -4.89 | 5 | 10 | 2900 | 0.83 | 3 | 380 | 1 | 1 | 2 | DRAINAGE USE | SUBMERSIBLE PUMP |
| SUB-2 | GROUND FLOOR ROOF & LEFT BALG | 2 | 7 | 2900 | 0.3 | 1 | 220 | 2 | 0 | 2 | PUMP/RAIN USE | SUBMERSIBLE PUMP |
| CP-1 | GROUND FLOOR MECH. ROOF BALG | 1.21 | 5 | 2900 | 0.10 | 1 | 220 | 1 | 0 | 1 | UNDERFLOOR HEAT DISTRIBUTION (HOT WATER PUMP) | CIRCULATING PUMP |
| CP-2 | GROUND FLOOR MECH. ROOF BALG | 1.21 | 5 | 2900 | 0.10 | 1 | 220 | 1 | 0 | 1 | HOT WATER SYSTEM (CIRCULATING HOT WATER PUMP) | CIRCULATING PUMP |
| CP-3 | GROUND FLOOR MECH. LEFT BALG | 1.72 | 5 | 2900 | 0.14 | 1 | 220 | 1 | 0 | 1 | UNDERFLOOR HEAT DISTRIBUTION (HOT WATER PUMP) | CIRCULATING PUMP |
| CP-4 | GROUND FLOOR MECH. LEFT BALG | 1.72 | 5 | 2900 | 0.14 | 1 | 220 | 1 | 0 | 1 | HOT WATER SYSTEM (CIRCULATING HOT WATER PUMP) | CIRCULATING PUMP |
| UPP-1 | GROUND FLOOR MECH. ROOF BALG | 0.22 | 5 | 2900 | 0.10 | 1 | 220 | 1 | 0 | 1 | UNDERFLOOR HEAT (DOWN 1 / LEFT BALG) | CIRCULATING PUMP |
| UPP-2 | GROUND FLOOR MECH. ROOF BALG | 0.66 | 5 | 2900 | 0.10 | 1 | 220 | 1 | 0 | 1 | UNDERFLOOR HEAT (DOWN 2 / ROOF BALG) | CIRCULATING PUMP |
| UPP-3 | GROUND FLOOR MECH. ROOF BALG | 0.23 | 5 | 2900 | 0.10 | 1 | 220 | 1 | 0 | 1 | UNDERFLOOR HEAT (DOWN 3 / ROOF BALG) | CIRCULATING PUMP |
| UPP-4 | GROUND FLOOR MECH. LEFT BALG | 0.48 | 5 | 2900 | 0.10 | 1 | 220 | 1 | 0 | 1 | UNDERFLOOR HEAT (DOWN 4 / LEFT BALG) | CIRCULATING PUMP |
| UPP-5 | GROUND FLOOR MECH. LEFT BALG | 0.19 | 5 | 2900 | 0.10 | 1 | 220 | 1 | 0 | 1 | UNDERFLOOR HEAT (DOWN 1 / LEFT BALG) | CIRCULATING PUMP |
| UPP-6 | GROUND FLOOR MECH. LEFT BALG | 0.57 | 6.5 | 2900 | 0.10 | 1 | 220 | 1 | 0 | 1 | UNDERFLOOR HEAT (DOWN 2 / LEFT BALG) | CIRCULATING PUMP |
| HWRP-1 | GROUND FLOOR MECH. ROOF BALG | 0.10 | 7 | 2900 | 0.10 | 1 | 220 | 1 | 0 | 1 | HOT RETURN PUMP | CIRCULATING PUMP |
| HWRP-2 | GROUND FLOOR MECH. LEFT BALG | 0.10 | 7 | 2900 | 0.10 | 1 | 220 | 1 | 0 | 1 | HOT RETURN PUMP | CIRCULATING PUMP |

FOR THE LEFT SIDE BUILDING

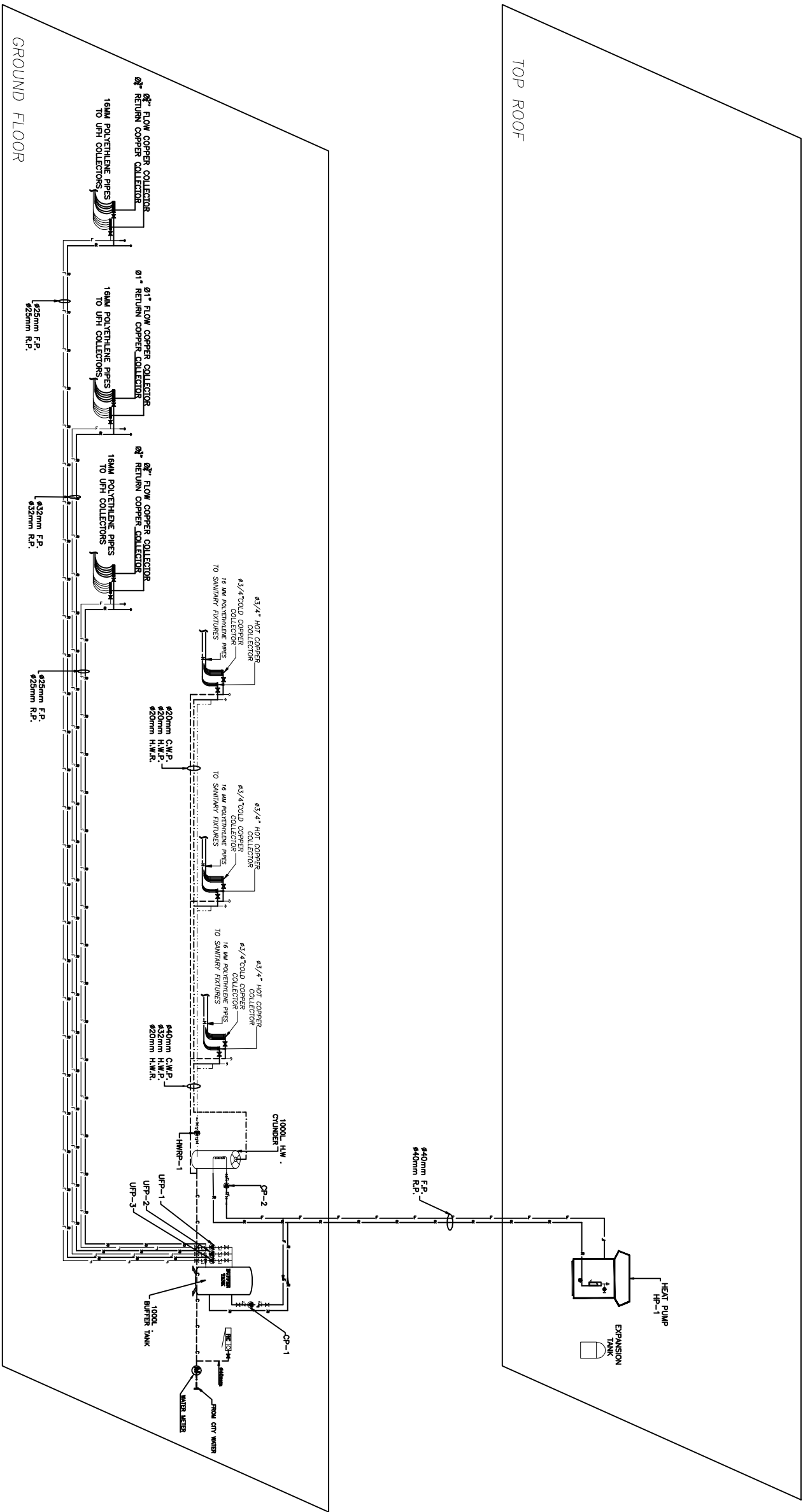
| ZONE No. | LOOP # | LOOP LENGTH (m) | ROOM TEMP. °C | FAN SPACING (cm) | LOAD (KCAL/Hr) |
|-------------|-----------|-----------------------|------------------|------------------------|-------------------|
| 1 | 1 | 105 | 30 | 10 | 3,354 |
| | 2 | 130 | 30 | 10 | |
| | 3 | 65 | 30 | 10 | |
| 2 | 1 | 210 | 40 | 6 | 6,761 |
| | 2 | 280 | 40 | 6 | |
| | 3 | 120 | 40 | 6 | |
| 3 | 1 | 130 | 30 | 10 | 10,236 |
| | 2 | 140 | 30 | 10 | |
| | 3 | 160 | 30 | 10 | |
| TOTAL | | | | | 22,351 |

| HIGH TEMPERATURE, HIGH-PRESSURE POLYMER (PEEK) | | |
|---|--------------------|---|
| WITH COMPOUNDING AGENTS FOR PROCESSING, STABILITY, AND SAFETY VALUE | | |
| BASELINE COMPOUND | 25.00KG | 1 |
| PEEK RESIN | 10.00KG | 1 |
| FOR PERFORMANCE | 2.5% | 1 |
| COMPOUNDING | REINFORCING AGENTS | 1 |
| START-UP PHASE | REINFORCING AGENTS | 1 |
| STATUS | REINFORCING AGENTS | 1 |
| NO. OF PERFORMANCE ANALYSIS | 1 | 1 |
| INTERVAL (HRS) | 1 | 1 |
| ELECTRICAL PROPERTY MEASUREMENTS | 1 | 1 |
| COMPOUNDING | 1 | 1 |
| ISO 9001 CERT. TYPE: (ISO 9001) | 1 | 1 |
| ISO 14001 CERT. TYPE: (ISO 14001) | 1 | 1 |
| ISO 45001 CERT. TYPE: (ISO 45001) | 1 | 1 |
| ISO 27001 CERT. TYPE: (ISO 27001) | 1 | 1 |
| ISO 50001 CERT. TYPE: (ISO 50001) | 1 | 1 |
| ISO 26000 CERT. TYPE: (ISO 26000) | 1 | 1 |
| ISO 22000 CERT. TYPE: (ISO 22000) | 1 | 1 |
| ISO 28000 CERT. TYPE: (ISO 28000) | 1 | 1 |
| ISO 31000 CERT. TYPE: (ISO 31000) | 1 | 1 |
| ISO 34000 CERT. TYPE: (ISO 34000) | 1 | 1 |
| ISO 36000 CERT. TYPE: (ISO 36000) | 1 | 1 |
| ISO 38000 CERT. TYPE: (ISO 38000) | 1 | 1 |
| ISO 40000 CERT. TYPE: (ISO 40000) | 1 | 1 |
| ISO 42000 CERT. TYPE: (ISO 42000) | 1 | 1 |
| ISO 44000 CERT. TYPE: (ISO 44000) | 1 | 1 |
| ISO 46000 CERT. TYPE: (ISO 46000) | 1 | 1 |
| ISO 48000 CERT. TYPE: (ISO 48000) | 1 | 1 |
| ISO 50000 CERT. TYPE: (ISO 50000) | 1 | 1 |
| ISO 52000 CERT. TYPE: (ISO 52000) | 1 | 1 |
| ISO 54000 CERT. TYPE: (ISO 54000) | 1 | 1 |
| ISO 56000 CERT. TYPE: (ISO 56000) | 1 | 1 |
| ISO 58000 CERT. TYPE: (ISO 58000) | 1 | 1 |
| ISO 60000 CERT. TYPE: (ISO 60000) | 1 | 1 |
| ISO 62000 CERT. TYPE: (ISO 62000) | 1 | 1 |
| ISO 64000 CERT. TYPE: (ISO 64000) | 1 | 1 |
| ISO 66000 CERT. TYPE: (ISO 66000) | 1 | 1 |
| ISO 68000 CERT. TYPE: (ISO 68000) | 1 | 1 |
| ISO 70000 CERT. TYPE: (ISO 70000) | 1 | 1 |
| ISO 72000 CERT. TYPE: (ISO 72000) | 1 | 1 |
| ISO 74000 CERT. TYPE: (ISO 74000) | 1 | 1 |
| ISO 76000 CERT. TYPE: (ISO 76000) | 1 | 1 |
| ISO 78000 CERT. TYPE: (ISO 78000) | 1 | 1 |
| ISO 80000 CERT. TYPE: (ISO 80000) | 1 | 1 |
| ISO 82000 CERT. TYPE: (ISO 82000) | 1 | 1 |
| ISO 84000 CERT. TYPE: (ISO 84000) | 1 | 1 |
| ISO 86000 CERT. TYPE: (ISO 86000) | 1 | 1 |
| ISO 88000 CERT. TYPE: (ISO 88000) | 1 | 1 |
| ISO 90000 CERT. TYPE: (ISO 90000) | 1 | 1 |
| ISO 92000 CERT. TYPE: (ISO 92000) | 1 | 1 |
| ISO 94000 CERT. TYPE: (ISO 94000) | 1 | 1 |
| ISO 96000 CERT. TYPE: (ISO 96000) | 1 | 1 |
| ISO 98000 CERT. TYPE: (ISO 98000) | 1 | 1 |
| ISO 100000 CERT. TYPE: (ISO 100000) | 1 | 1 |
| ISO 102000 CERT. TYPE: (ISO 102000) | 1 | 1 |
| ISO 104000 CERT. TYPE: (ISO 104000) | 1 | 1 |
| ISO 106000 CERT. TYPE: (ISO 106000) | 1 | 1 |
| ISO 108000 CERT. TYPE: (ISO 108000) | 1 | 1 |
| ISO 110000 CERT. TYPE: (ISO 110000) | 1 | 1 |
| ISO 112000 CERT. TYPE: (ISO 112000) | 1 | 1 |
| ISO 114000 CERT. TYPE: (ISO 114000) | 1 | 1 |
| ISO 116000 CERT. TYPE: (ISO 116000) | 1 | 1 |
| ISO 118000 CERT. TYPE: (ISO 118000) | 1 | 1 |
| ISO 120000 CERT. TYPE: (ISO 120000) | 1 | 1 |
| ISO 122000 CERT. TYPE: (ISO 122000) | 1 | 1 |
| ISO 124000 CERT. TYPE: (ISO 124000) | 1 | 1 |
| ISO 126000 CERT. TYPE: (ISO 126000) | 1 | 1 |
| ISO 128000 CERT. TYPE: (ISO 128000) | 1 | 1 |
| ISO 130000 CERT. TYPE: (ISO 130000) | 1 | 1 |
| ISO 132000 CERT. TYPE: (ISO 132000) | 1 | 1 |
| ISO 134000 CERT. TYPE: (ISO 134000) | 1 | 1 |
| ISO 136000 CERT. TYPE: (ISO 136000) | 1 | 1 |
| ISO 138000 CERT. TYPE: (ISO 138000) | 1 | 1 |
| ISO 140000 CERT. TYPE: (ISO 140000) | 1 | 1 |
| ISO 142000 CERT. TYPE: (ISO 142000) | 1 | 1 |
| ISO 144000 CERT. TYPE: (ISO 144000) | 1 | 1 |
| ISO 146000 CERT. TYPE: (ISO 146000) | 1 | 1 |
| ISO 148000 CERT. TYPE: (ISO 148000) | 1 | 1 |
| ISO 150000 CERT. TYPE: (ISO 150000) | 1 | 1 |
| ISO 152000 CERT. TYPE: (ISO 152000) | 1 | 1 |
| ISO 154000 CERT. TYPE: (ISO 154000) | 1 | 1 |
| ISO 156000 CERT. TYPE: (ISO 156000) | 1 | 1 |
| ISO 158000 CERT. TYPE: (ISO 158000) | 1 | 1 |
| ISO 160000 CERT. TYPE: (ISO 160000) | 1 | 1 |
| ISO 162000 CERT. TYPE: (ISO 162000) | 1 | 1 |
| ISO 164000 CERT. TYPE: (ISO 164000) | 1 | 1 |
| ISO 166000 CERT. TYPE: (ISO 166000) | 1 | 1 |
| ISO 168000 CERT. TYPE: (ISO 168000) | 1 | 1 |
| ISO 170000 CERT. TYPE: (ISO 170000) | 1 | 1 |
| ISO 172000 CERT. TYPE: (ISO 172000) | 1 | 1 |
| ISO 174000 CERT. TYPE: (ISO 174000) | 1 | 1 |
| ISO 176000 CERT. TYPE: (ISO 176000) | 1 | 1 |
| ISO 178000 CERT. TYPE: (ISO 178000) | 1 | 1 |
| ISO 180000 CERT. TYPE: (ISO 180000) | 1 | 1 |
| ISO 182000 CERT. TYPE: (ISO 182000) | 1 | 1 |
| ISO 184000 CERT. TYPE: (ISO 184000) | 1 | 1 |
| ISO 186000 CERT. TYPE: (ISO 186000) | 1 | 1 |
| ISO 188000 CERT. TYPE: (ISO 188000) | 1 | 1 |
| ISO 190000 CERT. TYPE: (ISO 190000) | 1 | 1 |
| ISO 192000 CERT. TYPE: (ISO 192000) | 1 | 1 |
| ISO 194000 CERT. TYPE: (ISO 194000) | 1 | 1 |
| ISO 196000 CERT. TYPE: (ISO 196000) | 1 | 1 |
| ISO 198000 CERT. TYPE: (ISO 198000) | 1 | 1 |
| ISO 200000 CERT. TYPE: (ISO 200000) | 1 | 1 |
| ISO 202000 CERT. TYPE: (ISO 202000) | 1 | 1 |
| ISO 204000 CERT. TYPE: (ISO 204000) | 1 | 1 |
| ISO 206000 CERT. TYPE: (ISO 206000) | 1 | 1 |
| ISO 208000 CERT. TYPE: (ISO 208000) | 1 | 1 |
| ISO 210000 CERT. TYPE: (ISO 210000) | 1 | 1 |
| ISO 212000 CERT. TYPE: (ISO 212000) | 1 | 1 |
| ISO 214000 CERT. TYPE: (ISO 214000) | 1 | 1 |
| ISO 216000 CERT. TYPE: (ISO 216000) | 1 | 1 |
| ISO 218000 CERT. TYPE: (ISO 218000) | 1 | 1 |
| ISO 220000 CERT. TYPE: (ISO 220000) | 1 | 1 |
| ISO 222000 CERT. TYPE: (ISO 222000) | 1 | 1 |
| ISO 224000 CERT. TYPE: (ISO 224000) | 1 | 1 |
| ISO 226000 CERT. TYPE: (ISO 226000) | 1 | 1 |
| ISO 228000 CERT. TYPE: (ISO 228000) | 1 | 1 |
| ISO 230000 CERT. TYPE: (ISO 230000) | 1 | 1 |
| ISO 232000 CERT. TYPE: (ISO 232000) | 1 | 1 |
| ISO 234000 CERT. TYPE: (ISO 234000) | 1 | 1 |
| ISO 236000 CERT. TYPE: (ISO 236000) | 1 | 1 |
| ISO 238000 CERT. TYPE: (ISO 238000) | 1 | 1 |
| ISO 240000 CERT. TYPE: (ISO 240000) | 1 | 1 |
| ISO 242000 CERT. TYPE: (ISO 242000) | 1 | 1 |
| ISO 244000 CERT. TYPE: (ISO 244000) | 1 | 1 |
| ISO 246000 CERT. TYPE: (ISO 246000) | 1 | 1 |
| ISO 248000 CERT. TYPE: (ISO 248000) | 1 | 1 |
| ISO 250000 CERT. TYPE: (ISO 250000) | 1 | 1 |
| ISO 252000 CERT. TYPE: (ISO 252000) | 1 | 1 |
| ISO 254000 CERT. TYPE: (ISO 254000) | 1 | 1 |
| ISO 256000 CERT. TYPE: (ISO 256000) | 1 | 1 |
| ISO 258000 CERT. TYPE: (ISO 258000) | 1 | 1 |
| ISO 260000 CERT. TYPE: (ISO 260000) | 1 | 1 |
| ISO 262000 CERT. TYPE: (ISO 262000) | 1 | 1 |
| ISO 264000 CERT. TYPE: (ISO 264000) | 1 | 1 |
| ISO 266000 CERT. TYPE: (ISO 266000) | 1 | 1 |
| ISO 268000 CERT. TYPE: (ISO 268000) | 1 | 1 |
| ISO 270000 CERT. TYPE: (ISO 270000) | 1 | 1 |
| ISO 272000 CERT. TYPE: (ISO 272000) | 1 | 1 |
| ISO 274000 CERT. TYPE: (ISO 274000) | 1 | 1 |
| ISO 276000 CERT. TYPE: (ISO 276000) | 1 | 1 |
| ISO 278000 CERT. TYPE: (ISO 278000) | 1 | 1 |
| ISO 280000 CERT. TYPE: (ISO 280000) | 1 | 1 |
| ISO 282000 CERT. TYPE: (ISO 282000) | 1 | 1 |
| ISO 284000 CERT. TYPE: (ISO 284000) | 1 | 1 |
| ISO 286000 CERT. TYPE: (ISO 286000) | 1 | 1 |
| ISO 288000 CERT. TYPE: (ISO 288000) | 1 | 1 |
| ISO 290000 CERT. TYPE: (ISO 290000) | 1 | 1 |
| ISO 292000 CERT. TYPE: (ISO 292000) | 1 | 1 |
| ISO 294000 CERT. TYPE: (ISO 294000) | 1 | 1 |
| ISO 296000 CERT. TYPE: (ISO 296000) | 1 | 1 |
| ISO 298000 CERT. TYPE: (ISO 298000) | 1 | 1 |
| ISO 300000 CERT. TYPE: (ISO 300000) | 1 | 1 |
| ISO 302000 CERT. TYPE: (ISO 302000) | 1 | 1 |
| ISO 304000 CERT. TYPE: (ISO 304000) | 1 | 1 |
| ISO 306000 CERT. TYPE: (ISO 306000) | 1 | 1 |
| ISO 308000 CERT. TYPE: (ISO 308000) | 1 | 1 |
| ISO 310000 CERT. TYPE: (ISO 310000) | 1 | 1 |
| ISO 312000 CERT. TYPE: (ISO 312000) | 1 | 1 |
| ISO 314000 CERT. TYPE: (ISO 314000) | 1 | 1 |
| ISO 316000 CERT. TYPE: (ISO 316000) | 1 | 1 |
| ISO 318000 CERT. TYPE: (ISO 318000) | 1 | 1 |
| ISO 320000 CERT. TYPE: (ISO 320000) | 1 | 1 |
| ISO 322000 CERT. TYPE: (ISO 322000) | 1 | 1 |
| ISO 324000 CERT. TYPE: (ISO 324000) | 1 | 1 |
| ISO 326000 CERT. TYPE: (ISO 326000) | 1 | 1 |
| ISO 328000 CERT. TYPE: (ISO 328000) | 1 | 1 |
| ISO 330000 CERT. TYPE: (ISO 330000) | 1 | 1 |
| ISO 332000 CERT. TYPE: (ISO 332000) | 1 | 1 |
| ISO 334000 CERT. TYPE: (ISO 334000) | 1 | 1 |
| ISO 336000 CERT. TYPE: (ISO 336000) | 1 | 1 |
| ISO 338000 CERT. TYPE: (ISO 338000) | 1 | 1 |
| ISO 340000 CERT. TYPE: (ISO 340000) | 1 | 1 |
| ISO 342000 CERT. TYPE: (ISO 342000) | 1 | 1 |
| ISO 344000 CERT. TYPE: (ISO 344000) | 1 | 1 |
| ISO 346000 CERT. TYPE: (ISO 346000) | 1 | 1 |
| ISO 348000 CERT. TYPE: (ISO 348000) | 1 | 1 |
| ISO 350000 CERT. TYPE: (ISO 350000) | 1 | 1 |
| ISO 352000 CERT. TYPE: (ISO 352000) | 1 | 1 |
| ISO 354000 CERT. TYPE: (ISO 354000) | 1 | 1 |
| ISO 356000 CERT. TYPE: (ISO 356000) | 1 | 1 |
| ISO 358000 CERT. TYPE: (ISO 358000) | 1 | 1 |
| ISO 360000 CERT. TYPE: (ISO 360000) | 1 | 1 |
| ISO 362000 CERT. TYPE: (ISO 362000) | 1 | 1 |
| ISO 364000 CERT. TYPE: (ISO 364000) | 1 | 1 |
| ISO 366000 CERT. TYPE: (ISO 366000) | 1 | 1 |
| ISO 368000 CERT. TYPE: (ISO 368000) | 1 | 1 |
| ISO 370000 CERT. TYPE: (ISO 370000) | 1 | 1 |
| ISO 372000 CERT. TYPE: (ISO 372000) | 1 | 1 |
| ISO 374000 CERT. TYPE: (ISO 374000) | 1 | 1 |
| ISO 376000 CERT. TYPE: (ISO 376000) | 1 | 1 |
| ISO 378000 CERT. TYPE: (ISO 378000) | 1 | 1 |
| ISO 380000 CERT. TYPE: (ISO 380000) | 1 | 1 |
| ISO 382000 CERT. TYPE: (ISO 382000) | 1 | 1 |
| ISO 384000 CERT. TYPE: (ISO 384000) | 1 | 1 |
| ISO 386000 CERT. TYPE: (ISO 386000) | 1 | 1 |
| ISO 388000 CERT. TYPE: (ISO 388000) | 1 | 1 |
| ISO 390000 CERT. TYPE: (ISO 390000) | 1 | 1 |
| ISO 392000 CERT. TYPE: (ISO 392000) | 1 | 1 |
| ISO 394000 CERT. TYPE: (ISO 394000) | 1 | 1 |
| ISO 396000 CERT. TYPE: (ISO 396000) | 1 | 1 |
| ISO 398000 CERT. TYPE: (ISO 398000) | 1 | 1 |
| ISO 400000 CERT. TYPE: (ISO 400000) | 1 | 1 |
| ISO 402000 CERT. TYPE: (ISO 402000) | 1 | 1 |
| ISO 404000 CERT. TYPE: (ISO 404000) | 1 | 1 |
| ISO 406000 CERT. TYPE: (ISO 406000) | 1 | 1 |
| ISO 408000 CERT. TYPE: (ISO 408000) | 1 | 1 |
| ISO 410000 CERT. TYPE: (ISO 410000) | 1 | 1 |
| ISO 412000 CERT. TYPE: (ISO 412000) | 1 | 1 |
| ISO 414000 CERT. TYPE: (ISO 414000) | 1 | 1 |
| ISO 416000 CERT. TYPE: (ISO 416000) | 1 | 1 |
| ISO 418000 CERT. TYPE: (ISO 418000) | 1 | 1 |
| ISO 420000 CERT. TYPE: (ISO 420000) | 1 | 1 |
| ISO 422000 CERT. TYPE: (ISO 422000) | 1 | 1 |
| ISO 424000 CERT. TYPE: (ISO 424000) | 1 | 1 |
| ISO 426000 CERT. TYPE: (ISO 426000) | 1 | 1 |
| ISO 428000 CERT. TYPE: (ISO 428000) | 1 | 1 |
| ISO 430000 CERT. TYPE: (ISO 430000) | 1 | 1 |
| ISO 432000 CERT. TYPE: (ISO 432000) | 1 | 1 |
| ISO 434000 CERT. TYPE: (ISO 434000) | 1 | 1 |
| ISO 436000 CERT. TYPE: (ISO 436000) | 1 | 1 |
| ISO 438000 CERT. TYPE: (ISO 438000) | 1 | 1 |
| ISO 440000 CERT. TYPE: (ISO 440000) | 1 | 1 |
| ISO 442000 CERT. TYPE: (ISO 442000) | 1 | 1 |
| ISO 444000 CERT. TYPE: (ISO 444000) | 1 | 1 |
| ISO 446000 CERT. TYPE: (ISO 446000) | 1 | 1 |
| ISO 448000 CERT. TYPE: (ISO 448000) | 1 | 1 |
| ISO 450000 CERT. TYPE: (ISO 450000) | 1 | 1 |
| ISO 452000 CERT. TYPE: (ISO 452000) | 1 | 1 |
| ISO 454000 CERT. TYPE: (ISO 454000) | 1 | 1 |
| ISO 456000 CERT. TYPE: (ISO 456000) | 1 | 1 |
| ISO 458000 CERT. TYPE: (ISO 458000) | 1 | 1 |
| ISO 460000 CERT. TYPE: (ISO 460000) | 1 | 1 |
| ISO 462000 CERT. TYPE: (ISO 462000) | 1 | 1 |
| ISO 464000 CERT. TYPE: (ISO 464000) | 1 | 1 |
| ISO 466000 CERT. TYPE: (ISO 466000) | 1 | 1 |
| ISO 468000 CERT. TYPE: (ISO 468000) | 1 | 1 |
| ISO 470000 CERT. TYPE: (ISO 470000) | 1 | 1 |
| ISO 472000 CERT. TYPE: (ISO 472000) | 1 | 1 |
| ISO 474000 CERT. TYPE: (ISO 474000) | 1 | 1 |
| ISO 476000 CERT. TYPE: (ISO 476000) | 1 | 1 |
| ISO 478000 CERT. TYPE: (ISO 478000) | 1 | 1 |
| ISO 480000 CERT. TYPE: (ISO 480000) | 1 | 1 |
| ISO 482000 CERT. TYPE: (ISO 482000) | 1 | 1 |
| ISO 484000 CERT. TYPE: (ISO 484000) | 1 | 1 |
| ISO 486000 CERT. TYPE: (ISO 486000) | 1 | 1 |
| ISO 488000 CERT. TYPE: (ISO 488000) | 1 | 1 |
| ISO 490000 CERT. TYPE: (ISO 490000) | 1 | 1 |
| ISO 492000 CERT. TYPE: (ISO 492000) | 1 | 1 |
| ISO 494000 CERT. TYPE: (ISO 494000) | 1 | 1 |
| ISO 496000 CERT. TYPE: (ISO 496000) | 1 | 1 |
| ISO 498000 CERT. TYPE: (ISO 498000) | 1 | 1 |
| ISO 500000 CERT. TYPE: (ISO 500000) | 1 | 1 |
| ISO 502000 CERT. TYPE: (ISO 502000) | 1 | 1 |
| ISO 504000 CERT. TYPE: (ISO 504000) | 1 | 1 |
| ISO 506000 CERT. TYPE: (ISO 506000) | 1 | 1 |
| ISO 508000 CERT. TYPE: (ISO 508000) | 1 | 1 |
| ISO 510000 CERT. TYPE: (ISO 510000) | 1 | 1 |
| ISO 512000 CERT. TYPE: (ISO 512000) | 1 | 1 |
| ISO 514000 CERT. TYPE: (ISO 514000) | 1 | 1 |
| ISO 516000 CERT. TYPE: (ISO 516000) | 1 | 1 |
| ISO 518000 CERT. TYPE: (ISO 518000) | 1 | 1 |
| ISO 520000 CERT. TYPE: (ISO 520000) | 1 | 1 |
| ISO 522000 CERT. TYPE: (ISO 522000) | 1 | 1 |
| ISO 524000 CERT. TYPE: (ISO 524000) | 1 | 1 |
| ISO 526000 CERT. TYPE: (ISO 526000) | 1 | 1 |
| ISO 528000 CERT. TYPE: (ISO 528000) | 1 | 1 |
| ISO 530000 CERT. TYPE: (ISO 530000) | 1 | 1 |
| ISO 532000 CERT. TYPE: (ISO 532000) | 1 | 1 |
| ISO 534000 CERT. TYPE: (ISO 534000) | 1 | 1 |
| ISO 536000 CERT. TYPE: (ISO 536000) | 1 | 1 |
| ISO 538000 CERT. TYPE: (ISO 538000) | 1 | 1 |
| ISO 540000 CERT. TYPE: (ISO 540000) | 1 | 1 |
| ISO 542000 CERT. TYPE: (ISO 542000) | 1 | 1 |
| ISO 544000 CERT. TYPE: (ISO 544000) | 1 | 1 |
| ISO 546000 CERT. TYPE: (ISO 546000) | 1 | 1 |
| ISO 548000 CERT. TYPE: (ISO 548000) | 1 | 1 |
| ISO 550000 CERT. TYPE: (ISO 550000) | 1 | 1 |
| ISO 552000 CERT. TYPE: (ISO 552000) | 1 | 1 |
| ISO 554000 CERT. TYPE: (ISO 554000) | 1 | 1 |
| ISO 556000 CERT. TYPE: (ISO 556000) | 1 | 1 |
| ISO 558000 CERT. TYPE: (ISO 558000) | 1 | 1 |
| ISO 560000 CERT. TYPE: (ISO 560000) | 1 | 1 |
| ISO 562000 CERT. TYPE: (ISO 562000) | 1 | 1 |
| ISO 564000 CERT. TYPE: (ISO 564000) | 1 | 1 |
| ISO 566000 CERT. TYPE: (ISO 566000) | 1 | 1 |
| ISO 568000 CERT. TYPE: (ISO 568000) | 1 | 1 |
| ISO 570000 CERT. TYPE: (ISO 570000) | 1 | 1 |
| ISO 572000 CERT. TYPE: (ISO 572000) | 1 | 1 |
| ISO 574000 CERT. TYPE: (ISO 574000) | 1 | 1 |
| ISO 576000 CERT. TYPE: (ISO 576000) | 1 | 1 |
| ISO 578000 CERT. TYPE: (ISO 578000) | 1 | 1 |
| ISO 580000 CERT. TYPE: (ISO 580000) | 1 | 1 |
| ISO 582000 CERT. TYPE: (ISO 582000) | 1 | 1 |
| ISO 584000 CERT. TYPE: (ISO 584000) | 1 | 1 |
| ISO 586000 CERT. TYPE: (ISO 586000) | 1 | 1 |
| ISO 588000 CERT. TYPE: (ISO 588000) | 1 | 1 |
| ISO 590000 CERT. TYPE: (ISO 590000) | 1 | 1 |
| ISO 592000 CERT. TYPE: (ISO 592000) | 1</ | |

NOTES:

| | |
|---|-------------------------------|
|  JERUSALEM DESIGN CENTER | |
| DESIGNED BY: | |
| March, Ibrahim Alindi | |
| Electrical Works | |
|  | |
|    | |
| EUROPEAN UNION Empowered lives. Resilient nations. | |
| PROJECT Rehabilitation Of the Hamman of Ayn and Hamman of Shifa OLD CITY - JERUSALEM | |
|  | |
| CLIENT NAME | |
| EQUIPMENTS SCHEDULE | |
| TOOLS N.T.S. | DETAILS 01 |
| <input type="checkbox"/> For review <input type="checkbox"/> For approval <input checked="" type="checkbox"/> For tender <input type="checkbox"/> For construction | SHEET NO. 01 |
|  | |
| 01/02/2018 | |

SCHEMATIC FOR HEAT & WATER SYSTEM
(FOR THE RIGHT BUILDING)



NOTES:

Jerusalem Design Center

DESIGNED BY:

March, Ibrahim Alhindi

Electrical Works

Mechanical Works

eite
Mechanical & Electrical Consultancy



Jerusalem Design Center
Rehabilitation Of the House of the Holy Sepulchre
OLD CITY - JERUSALEM



PROJECT NAME

SCHEMATIC FOR HEAT
& WATER SYSTEM

SCALE

NTS

EDITION

01

SHEET NO.

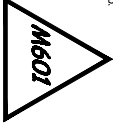
For review

For approval

For tender

For construction

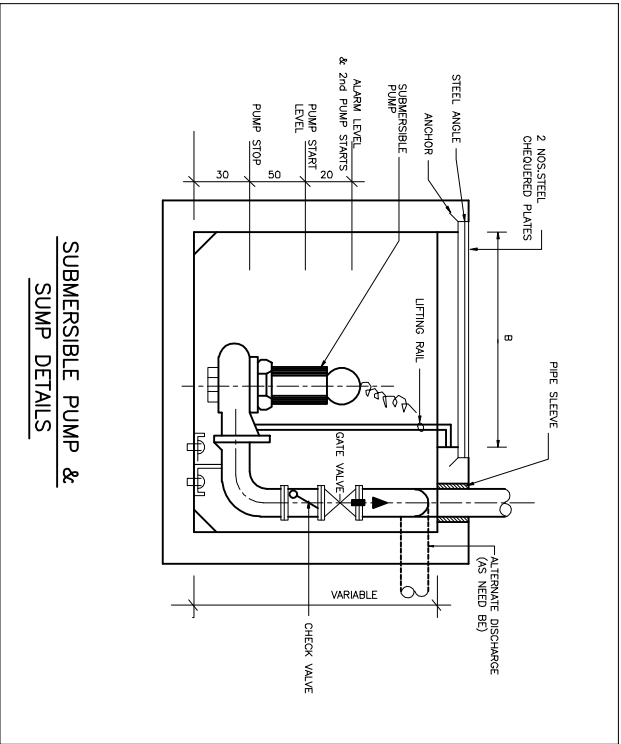
01/02/2018



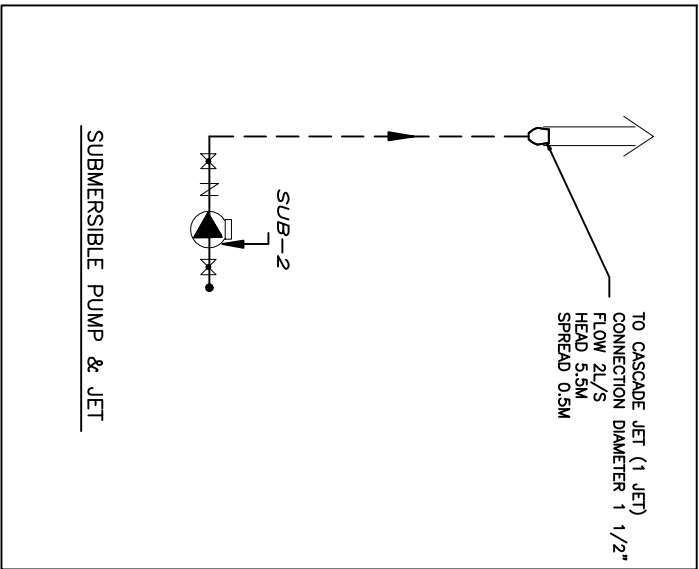
Jerusalem Design Center

P.O.Box 19276, Jerusalem Tel. 02-2343695 Fax. 02-2343718

NOTES:



SUMP DETAILS



SUBMERSIBLE PUMP & JET

JERUSALEM DESIGN CENTER

SIGNED BY

March. Ibrahim Alhindi

Electrical Work

Mechanical Work

elite
Mechanical & Electrical Consultants



Little Rock Council
Resilient nation

Resilient nation

Rehabilitation Of the Hammam el-Ayn and Hammam el Shifa OLD CITY - JERUSALEM



GET MORE

MECHANICAL DETAIL

THE

DITION:
01

HEFT

1

1

For lender

For construction

01/02/2015

**JERUSALEM DESIGN CENTER**

P.O. Box 19276, Jerusalem Tel. 02-2343696 Fax. 02-23437

Box

Fox, C