

PROCUREMENT NOTICE

United Nations Development Programme (UNDP) Nepal works with the People and Government of Nepal, and other development partners to pursue equitable and sustainable human development goals through eradication of poverty, increase in livelihood opportunities, improvement in community resilience against conflict, disasters and impact of climate change, while laying down strong foundation or a society based on rule of law with an inclusive and participatory democracy.



The UNDP Nepal is extending deadline for submission of bids as shown below;

Bulletin 1

First date of Publication : 02 July 2015

Reference No.: Invitation to Bid - UNDP/ITB/05/2015

Project: UNDP/Prepare the Public Administration for State Reforms (PREPARE)

Purpose: Supply and Delivery of Prefabricated Office Blocks

The submission deadline has been extended for one week and questions and answers have been uploaded in the website.

Extended deadline for bid submission: 16 July 2015, 1200 noon

Weblink: <http://www.np.undp.org/content/nepal/en/home/operations/procurement.html>

Who can apply: National and international firms/companies

How to apply: As per the instructions in the detailed bidding document.

Date: 9 July 2015

Bulletin 1

Invitation to Bid for Supply and Delivery of Prefabricated Office Blocks

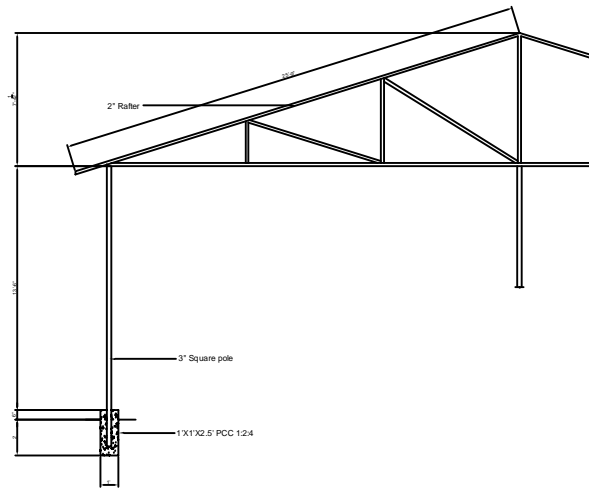
Reference No.: UNDP/ITB/05/2015

Question and Answers

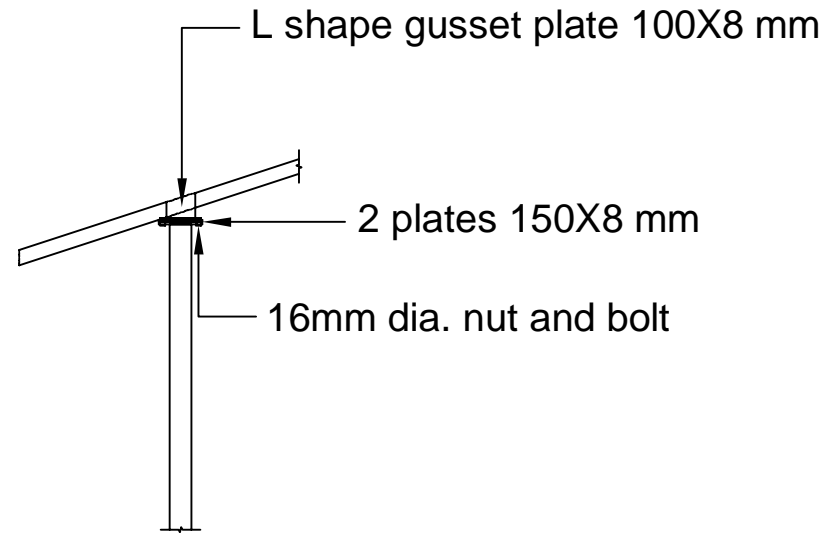
1. The cross section of drawing (Block) is not provided which makes the height of masonry wall, 3"/2" MS pole of heavy duty unclear. Dimension of foundation is not provided. The design drawing is incomplete which may cause problem while construction

Answer: The design/drawing of the truss is now attached and the measurement of the Truss is as follows:

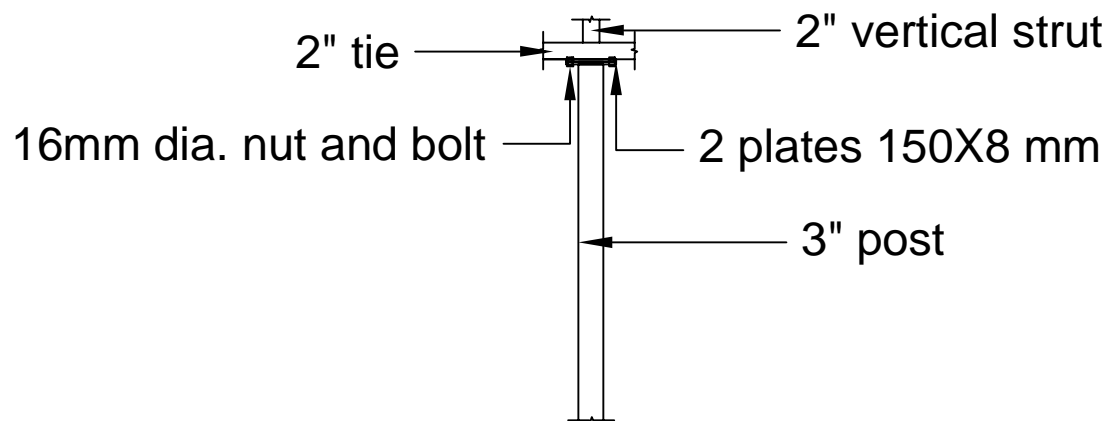
- Height of masonry wall – 2'
- Height of 3" MS Pole of heavy duty – 14'
- Height of 2" MS Pole of heavy duty – 12.5'
- The respective span (width) of Type A and Type B buildings: 45 feet and 40 feet
- Dimension of foundation: Details provided in the design
- Other details are found from the enclosed design.



Foundation detail for pole



Detail of junction of truss and edge pole



Notes

1. 2" MS pipe are used with horizontal joist for supporting doors and windows at 4' c/c or as per instruction.
2. Brick masonry works are 9" thick and 1.5' depth (6" above GL and 1' below GL)