


Key Plan



REV	BY	APP	DESCRIPTION	DATE	

Revisions

THIS DRAWING IS A COPYRIGHT. DO NOT SCALE FROM THE DRAWING. THE CONTRACTOR AND HIS SUB-CONTRACTORS ARE TO VERIFY ALL DIMENSIONS ON SITE BEFORE MAKING SHOP DRAWINGS OR COMMENCING MANUFACTURE.



United Nation Development Programme
UNDP Lebanon
Social and Local Development Programme
Empowering lives. Resilient nations.
P.O.Box: 11-3216 Beirut, Lebanon Tel: 961 1 962491

PROGRAMME:
Lebanese Host Communities Support Programme

CONSULTANT:

BOYADJIAN & ASSOCIATES
PROJECT FINANCE AND MANAGEMENT CONSULTANTS
P.O.Box: 175 293 Beirut, Lebanon Tel: 961 1 980138

PROJECT:

HADANAT AL TOUFOL

PLOT NO.:	-	BLOCK:	-
-----------	---	--------	---

Sheet Information

PROJECT NBR.	-
PROJECT PHASE	TENDER
DISCIPLINE	CIVIL ENGINEERING
SECTOR	-
BUILDING	-
DESIGNED	-
DRAWN	GB
CHECKED	VB
APPROVED	VB
DATE	03.09.2015
SCALE	-
SHEET SIZE	A1

Sheet Title

Sheet nbr.



HADANAT AL TOUFOL

Site Location

GOVERNORATE	BEKAA
DISTRICT	ZAHLEH
CITY	ZAHLEH
GPS N	33.843462
GPS E	35.902944
ALTITUDE	1000 MTS

List of Drawings

T-C-G-001	FLOOR PLAN
T-C-G-002	TILING PLAN
T-C-G-003	ALUMINUM WINDOWS AND DOORS
T-C-G-004	CONSTRUCTION DETAILS 1/7
T-C-G-005	CONSTRUCTION DETAILS 2/7
T-C-G-006	CONSTRUCTION DETAILS 3/7
T-C-G-007	CONSTRUCTION DETAILS 4/7
T-C-G-008	CONSTRUCTION DETAILS 5/7
T-C-G-009	CONSTRUCTION DETAILS 6/7
T-C-G-010	CONSTRUCTION DETAILS 7/7

Phase	Discipline	Floor Area	Drawing Number	Revision
-------	------------	------------	----------------	----------

Key Plan



REV	BY	APP	DESCRIPTION	DATE	

Revisions

THIS DRAWING IS A COPYRIGHT. DO NOT SCALE FROM THE DRAWING. THE CONTRACTOR AND HIS SUB-CONTRACTORS ARE TO VERIFY ALL DIMENSIONS ON SITE BEFORE MAKING SHOP DRAWINGS OR COMMENCING MANUFACTURE.

United Nation Development Programme
UNDP Lebanon
Social and Local Development Programme
P.O.Box: 11-3216 Beirut, Lebanon Tel: 961 1 962491

PROGRAMME:
Lebanese Host Communities
Support Programme

CONSULTANT:
BOYADJIAN & ASSOCIATES
PROJECT FINANCE AND MANAGEMENT CONSULTANTS
P.O.Box: 175 293 Beirut, Lebanon Tel: 961 1 990138

PROJECT:
HADANET AL TOUFOL

PLOT NO.:	-	BLOCK:	-
-----------	---	--------	---

Sheet Information

PROJECT NBR.	-
PROJECT PHASE	TENDER
DISCIPLINE	CIVIL ENGINEERING
SECTOR	-
BUILDING	-
DESIGNED	-
DRAWN	GB
CHECKED	VB
APPROVED	VB
DATE	03.09.2015
SCALE	-
SHEET SIZE	A1

Sheet Title
FLOOR PLAN

Sheet nbr.

T - C - G - 001 - R00

Phase	Discipline	Floor Area	Drawing Number	Revision
-------	------------	------------	----------------	----------

Key Plan



REV	BY	APP	DESCRIPTION	DATE	

Revisions

THIS DRAWING IS A COPYRIGHT. DO NOT SCALE FROM THE DRAWING. THE CONTRACTOR AND HIS SUB-CONTRACTORS ARE TO VERIFY ALL DIMENSIONS ON SITE BEFORE MAKING SHOP DRAWINGS OR COMMENCING MANUFACTURE.

United Nation Development Programme
UNDP Lebanon
Social and Local Development Programme
P.O.Box: 11-3216 Beirut, Lebanon Tel: 961 1 962491

PROGRAMME:
Lebanese Host Communities
Support Programme

CONSULTANT:
BOYADJIAN & ASSOCIATES
PROJECT FINANCE AND MANAGEMENT CONSULTANTS
P.O.Box: 175 293 Beirut, Lebanon Tel: 961 1 990138

PROJECT:
HADANET AL TOUFOL

PLOT NO.:	-	BLOCK:	-
-----------	---	--------	---

Sheet Information

PROJECT NBR.	-
PROJECT PHASE	TENDER
DISCIPLINE	CIVIL ENGINEERING
SECTOR	-
BUILDING	-
DESIGNED	-
DRAWN	GB
CHECKED	VB
APPROVED	VB
DATE	03.09.2015
SCALE	-
SHEET SIZE	A1

Sheet Title
TILING PLAN

Sheet nbr.

T - C - G - 002 - R00

Phase	Discipline	Floor Area	Drawing Number	Revision
-------	------------	------------	----------------	----------

Key Plan



REV	BY	APP	DESCRIPTION	DATE	

Revisions

THIS DRAWING IS A COPYRIGHT. DO NOT SCALE FROM THE DRAWING. THE CONTRACTOR AND HIS SUB-CONTRACTORS ARE TO VERIFY ALL DIMENSIONS ON SITE BEFORE MAKING SHOP DRAWINGS OR COMMENCING MANUFACTURE.

United Nation Development Programme
UNDP Lebanon
Social and Local Development Programme
P.O.Box: 11-3216 Beirut, Lebanon Tel: 961 1 962491

PROGRAMME:
Lebanese Host Communities
Support Programme

CONSULTANT:
BOYADJIAN & ASSOCIATES
PROJECT FINANCE AND MANAGEMENT CONSULTANTS
P.O.Box: 175 293 Beirut, Lebanon Tel: 961 1 980138

PROJECT:
HADANET AL TOUFOL

PLOT NO.:	-	BLOCK:	-
-----------	---	--------	---

Sheet Information

PROJECT NBR.	-	TENDER
PROJECT PHASE	-	DISCIPLINE
DISCIPLINE	CIVIL ENGINEERING	SECTOR
BUILDING	-	DESIGNED
DRAWN	GB	CHECKED
APPROVED	VB	DATE
SCALE	-	SHEET SIZE
	A1	

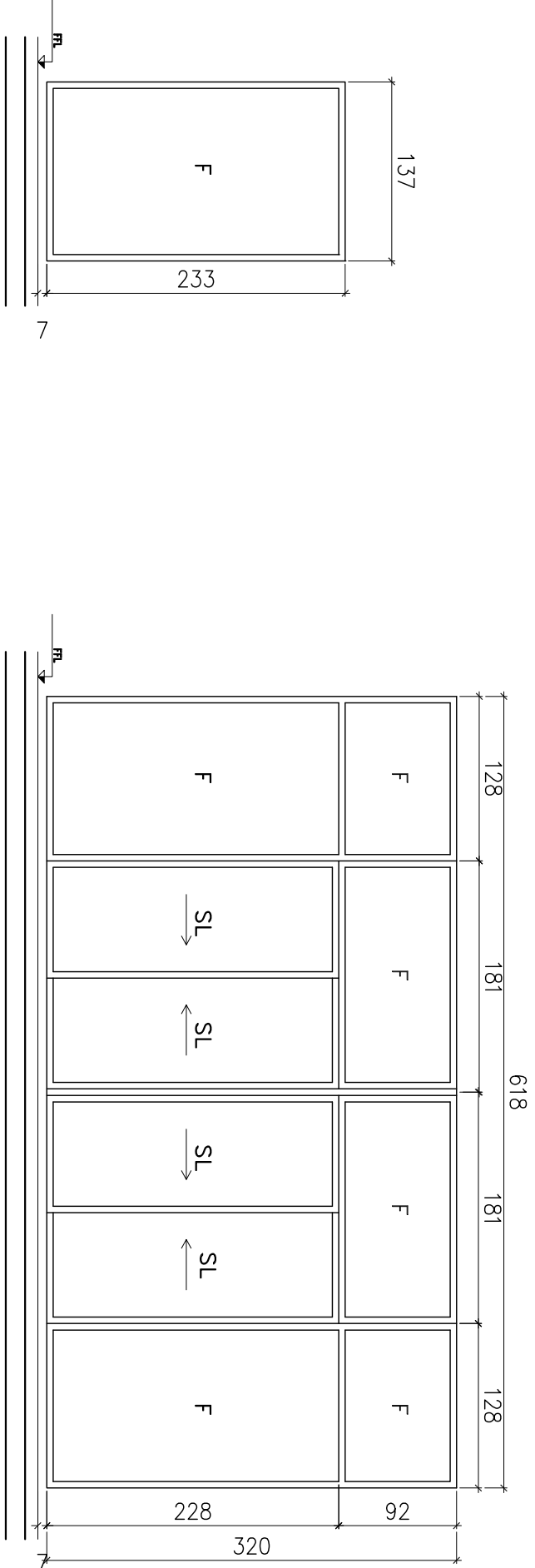
Sheet Title
ALUMINUM
WINDOWS AND DOORS

Sheet nbr.

T - C - G - 003 - R00

Phase	Discipline	Floor Area	Drawing Number	Revision
-------	------------	------------	----------------	----------

ALUMINUM WINDOWS & DOORS

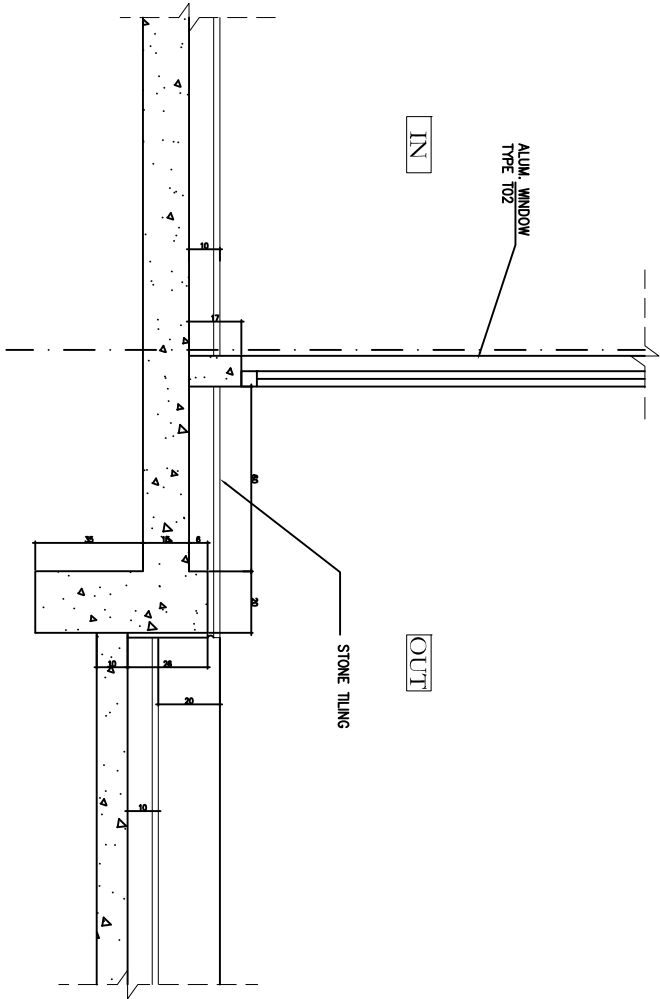


R.O. = 137x233 cm.
QUANTITY=1

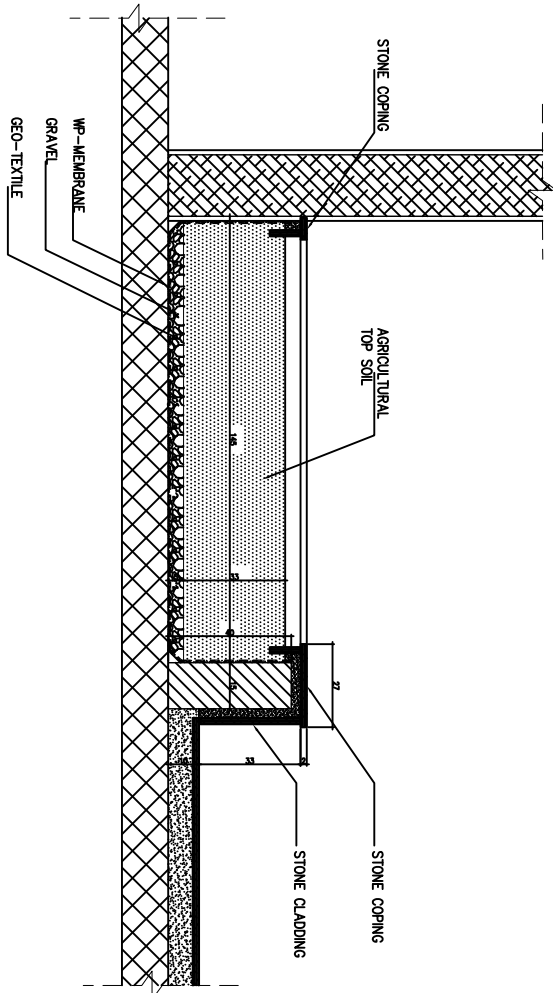
R.O. = 618x220 cm.
QUANTITY=1

R.O. = 65x145 cm.
QUANTITY=2

R.O. = 200x240 cm.
QUANTITY=4



VERTICAL SECTION



FLOWER BED DETAILS

LEGEND:

- SW ONE WAY SWINGING PANE
- F SIDE TOP OR MIDDLE HINGED
- SL SLIDING PANEL
- R.O. ROUGH OPENING

NOTES:

- ALUMINUM WORKS SHOWN ARE DIAGRAMMATIC, CONTRACTOR TO SUBMIT DETAILED SHOP DRAWINGS FOR APPROVAL.
- ALL ALUMINUM TO BE POLYESTER POWDER COATED.
- ALL IRONMONGERY TO BE TOP QUALITY APPROPRIATE TO THE REQUIRED FUNCTION. CONTRACTOR TO SUBMIT SAMPLES FOR APPROVAL.
- OPERATION OF WINDOWS AND DOORS TO BE AS SHOWN ON DRAWINGS.
- ALL TYPES OF GLASS ARE 6mm CLEAR FLOAT GLASS .
- ALL WINDOWS ARE DOUBLE GLAZED (2 PANES 6mm GLASS SEPARATED BY A 10mm CAVITY)

Key Plan



REV	BY	APP	DESCRIPTION	DATE	

Revisions

THIS DRAWING IS A COPYRIGHT. DO NOT SCALE FROM THE DRAWING. THE CONTRACTOR AND HIS SUB-CONTRACTORS ARE TO VERIFY ALL DIMENSIONS ON SITE BEFORE MAKING SHOP DRAWINGS OR COMMENCING MANUFACTURE.

United Nation Development Programme
UNDP Lebanon
Social and Local Development Programme
P.O.Box: 11-3216 Beirut, Lebanon Tel: 961 1 962491

PROGRAMME: Lebanese Host Communities Support Programme
Support to Integrated Service Provision at the Local Level

CONSULTANT:

BOYADJIAN & ASSOCIATES
PROJECT FINANCE AND MANAGEMENT CONSULTANTS
P.O.Box: 175 293 Beirut, Lebanon Tel: 961 1 980138

PROJECT:

HADANAT AL TOUFOL

PLOT NO.:	-	BLOCK:	-
-----------	---	--------	---

Sheet Information

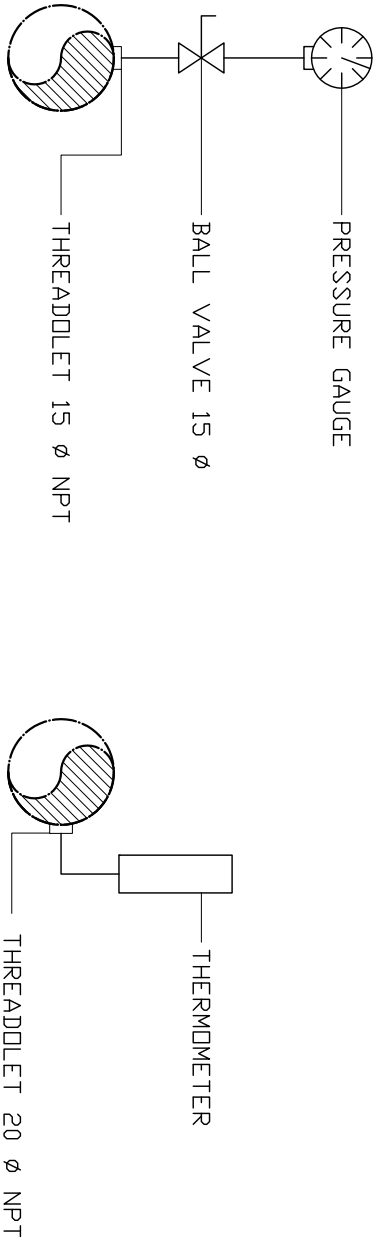
PROJECT NBR.	-	TENDER
PROJECT PHASE	-	CIVIL ENGINEERING
DISCIPLINE	-	
SECTOR	-	
BUILDING	-	
DESIGNED	-	
DRAWN	PM	
CHECKED	VB	
APPROVED	VB	
DATE	03.09.2015	
SCALE	-	
SHEET SIZE	A1	

Sheet Title
CONSTRUCTION
DETAILS 1/7

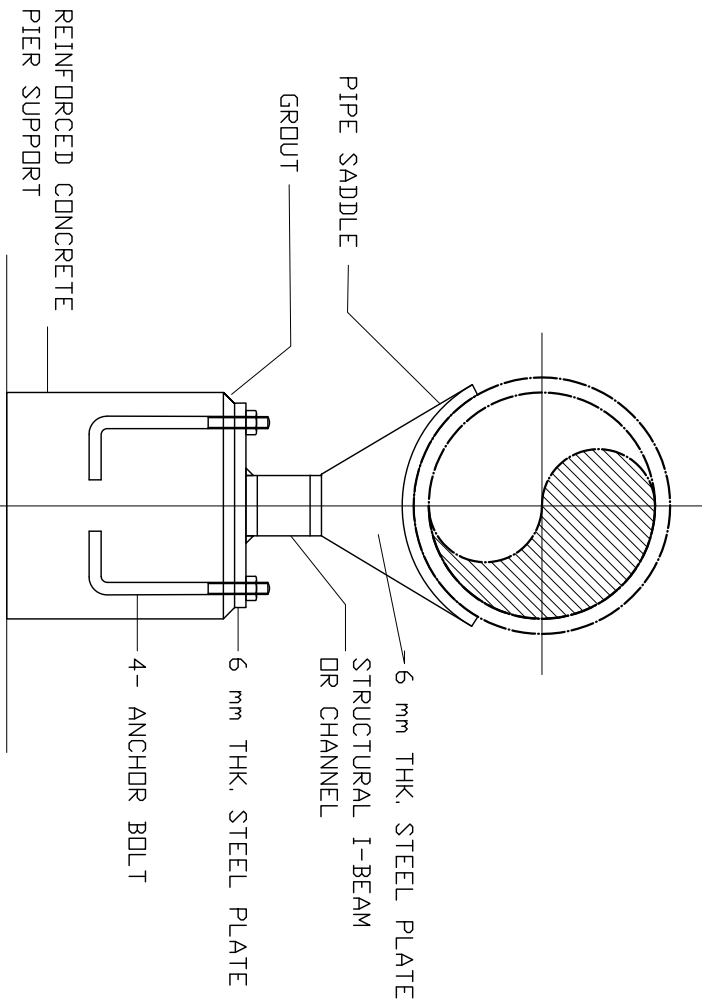
Sheet nbr.

T - C - G - 004 - R00

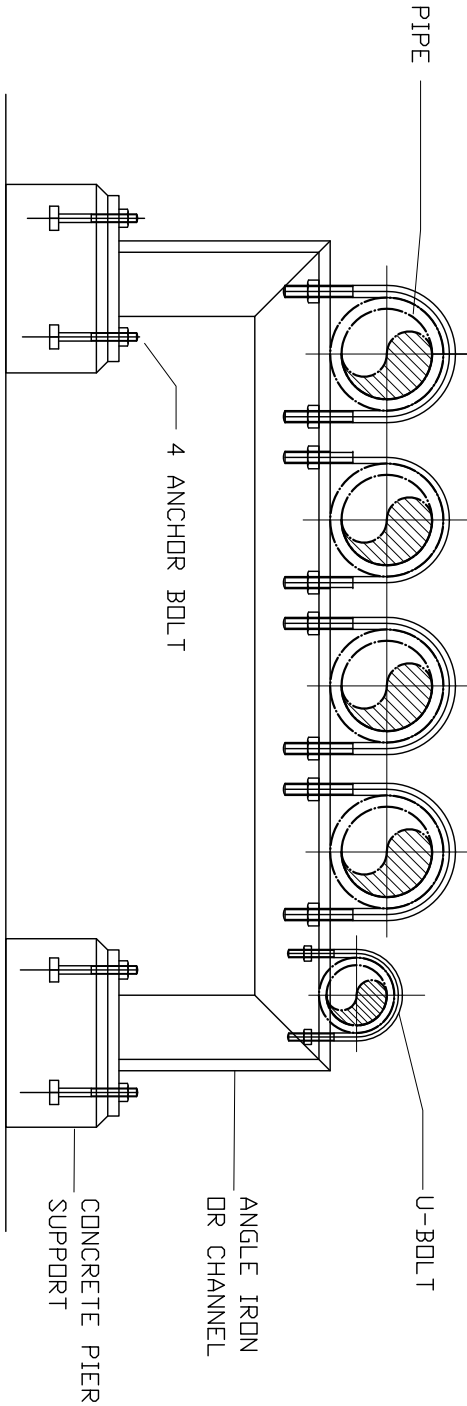
Phase	Discipline	Floor Area	Drawing Number	Revision
-------	------------	------------	----------------	----------



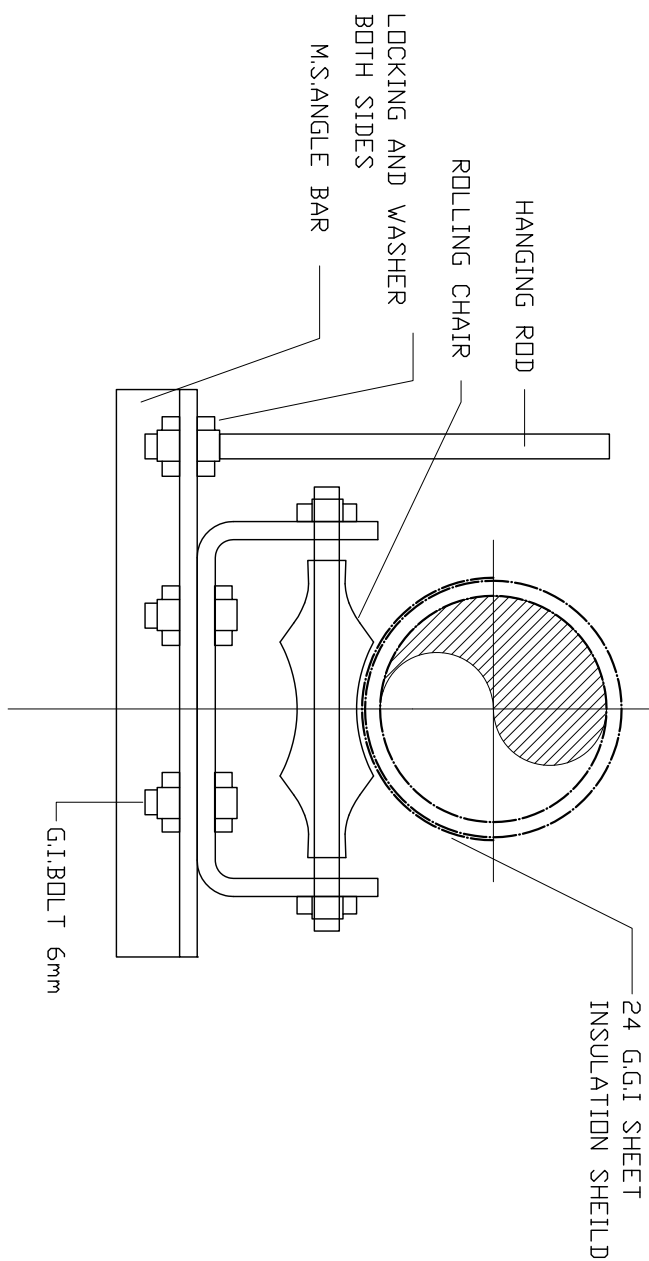
PRESSURE GAUGE & THERMOMETER CONNECTION DETAIL



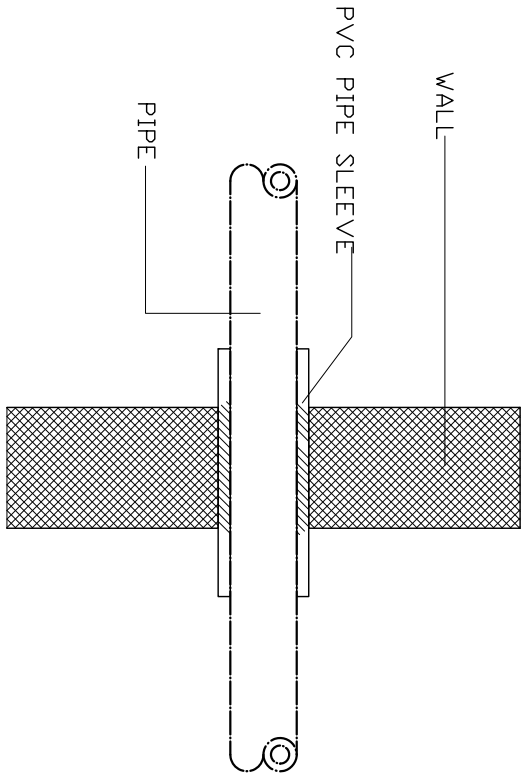
PIPE SADDLE SUPPORT



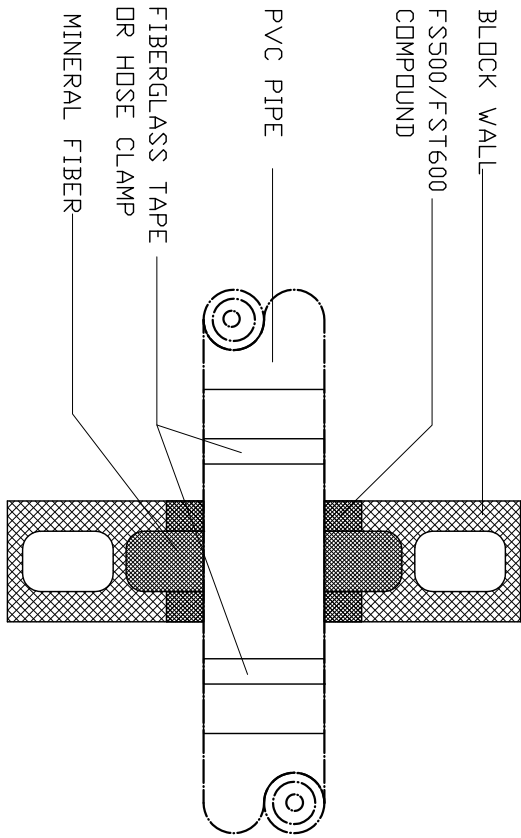
MULTIPLE PIPE SUPPORT



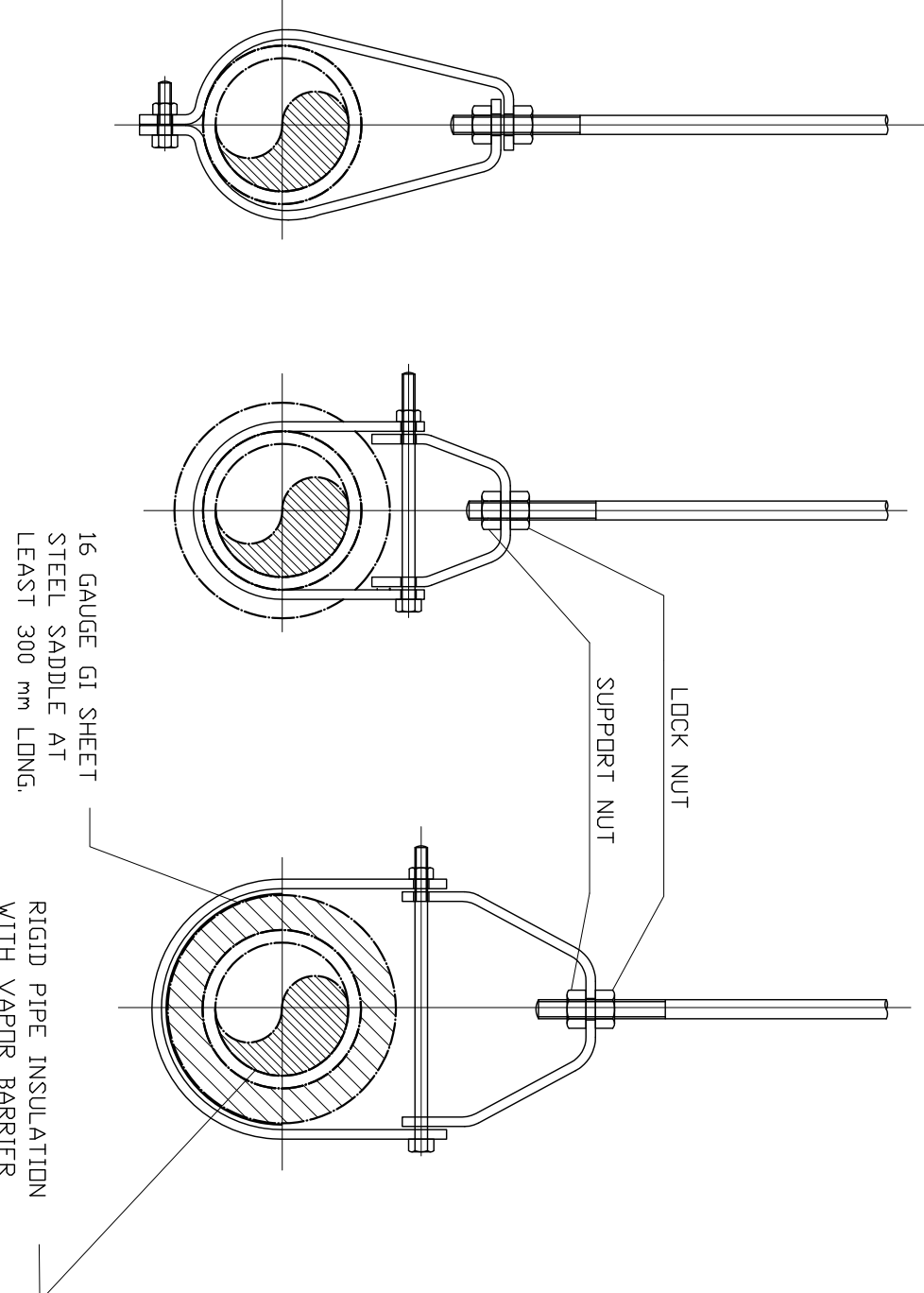
ROLLING CHAIR



CROSSING IN ORDINARY WALLS
ALL TYPES OF PIPES

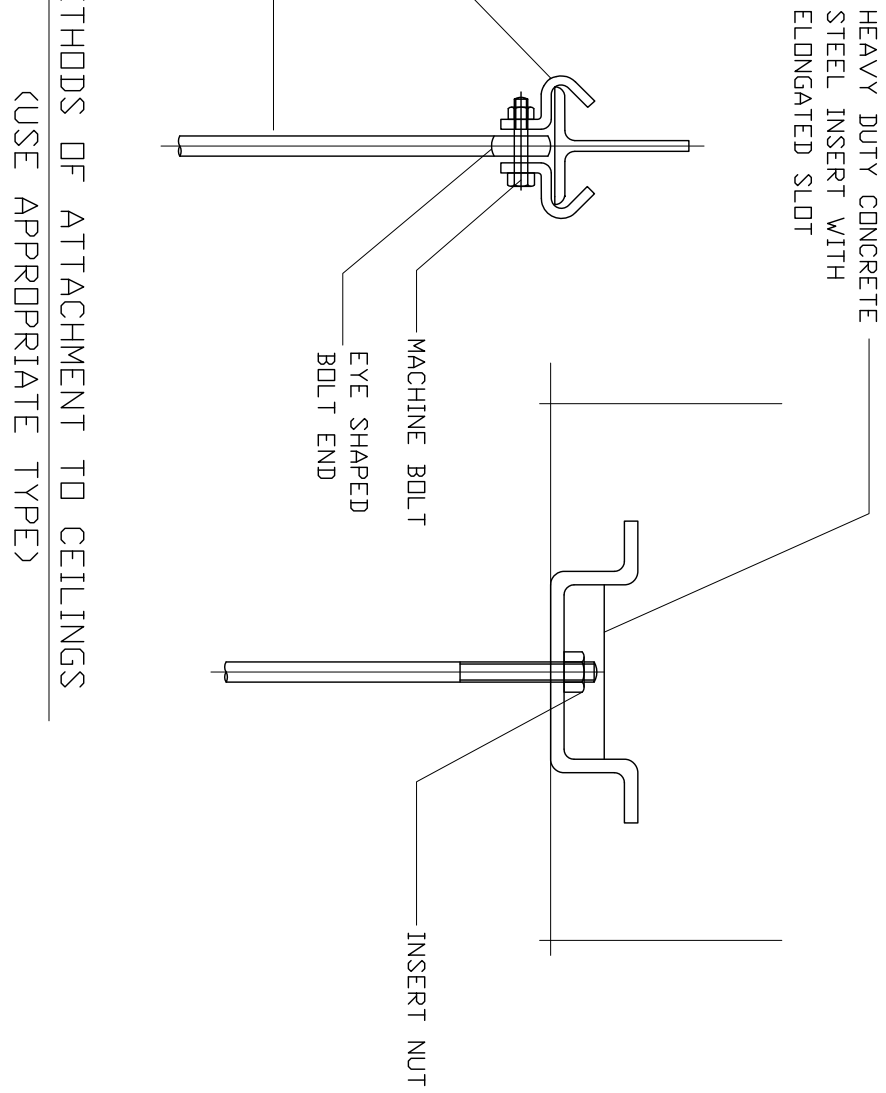


FOR PVC PIPE CROSSING THRU BLOCK WALL

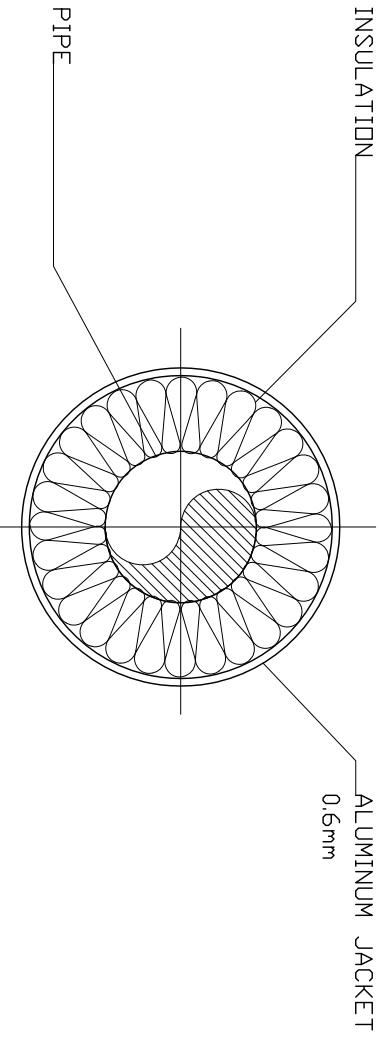


BOLTED BAND HANGER

CLEVIS HANGER



METHODS OF ATTACHMENT TO CEILINGS
(USE APPROPRIATE TYPE)



CLADDING (WHERE REQUIRED)
DUT DOOR AND EXPOSED IN PLANT ROOMS

Key Plan



REV	BY	APP	DESCRIPTION	DATE

Revisions

THIS DRAWING IS A COPYRIGHT. DO NOT SCALE FROM THE DRAWING. THE CONTRACTOR AND HIS SUB-CONTRACTORS ARE TO VERIFY ALL DIMENSIONS ON SITE BEFORE MAKING SHOP DRAWINGS OR COMMENCING MANUFACTURE.

United Nation Development Programme
UNDP Lebanon
Social and Local Development Programme
P.O.Box: 11-3216 Beirut, Lebanon Tel: 961 1 962491

PROGRAMME: Lebanese Host Communities Support Programme
Support to Integrated Service Provision at the Local Level

CONSULTANT:

BOYADJIAN & ASSOCIATES
PROJECT FINANCE AND MANAGEMENT CONSULTANTS
P.O.Box: 175 293 Beirut, Lebanon Tel: 961 1 980138

PROJECT:

HADANAT AL TOUFOL

PLOT NO.:	-	BLOCK:	-
-----------	---	--------	---

Sheet Information

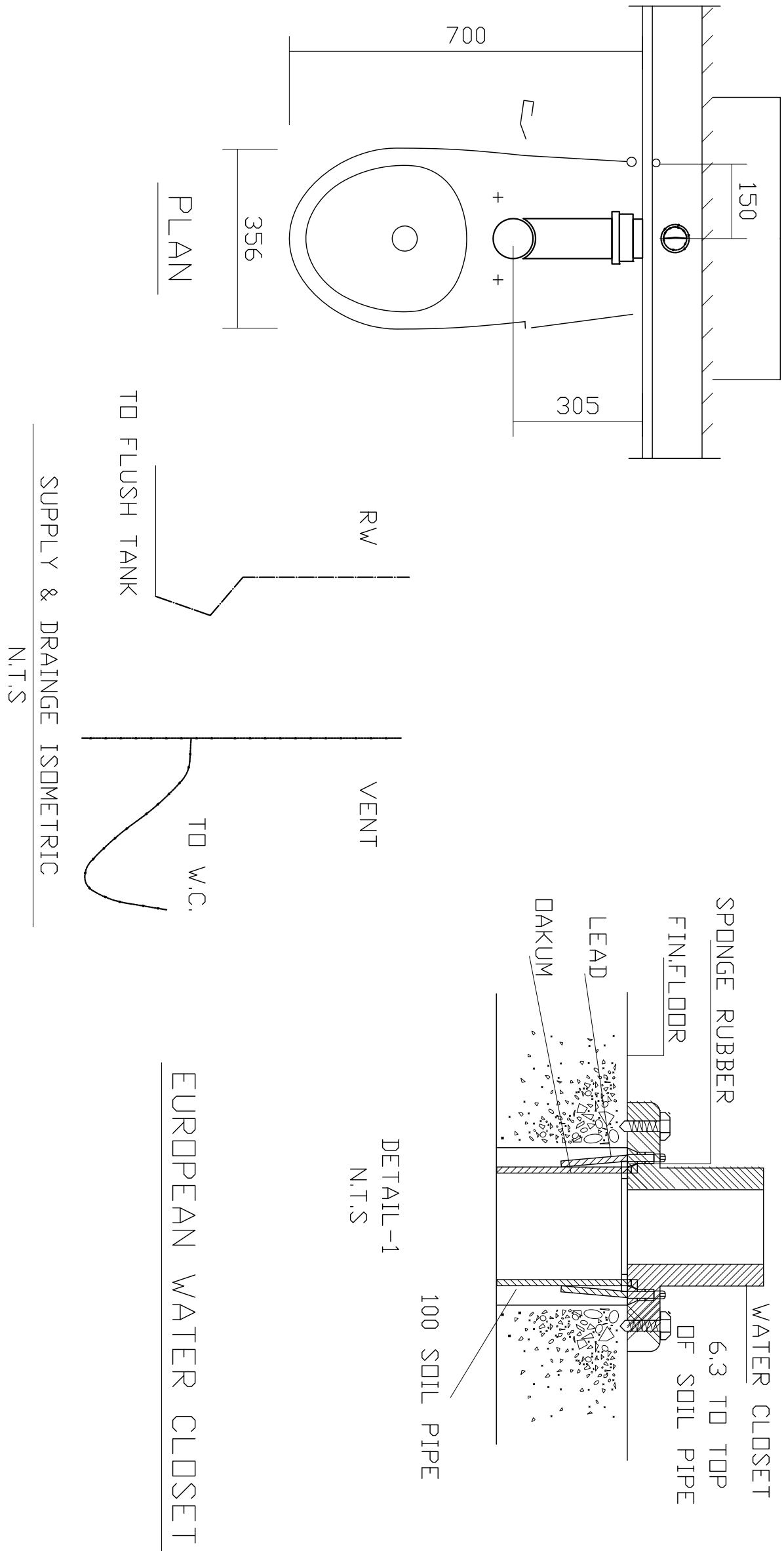
PROJECT NBR.	-	TENDER
PROJECT PHASE	-	CIVIL ENGINEERING
DISCIPLINE	-	
SECTOR	-	
BUILDING	-	
DESIGNED	-	
DRAWN	PM	
CHECKED	VB	
APPROVED	VB	
DATE	03.09.2015	
SCALE	-	
SHEET SIZE	A1	

Sheet Title
CONSTRUCTION
DETAILS 2/7

Sheet nbr.

T - C - G - 005 - R00

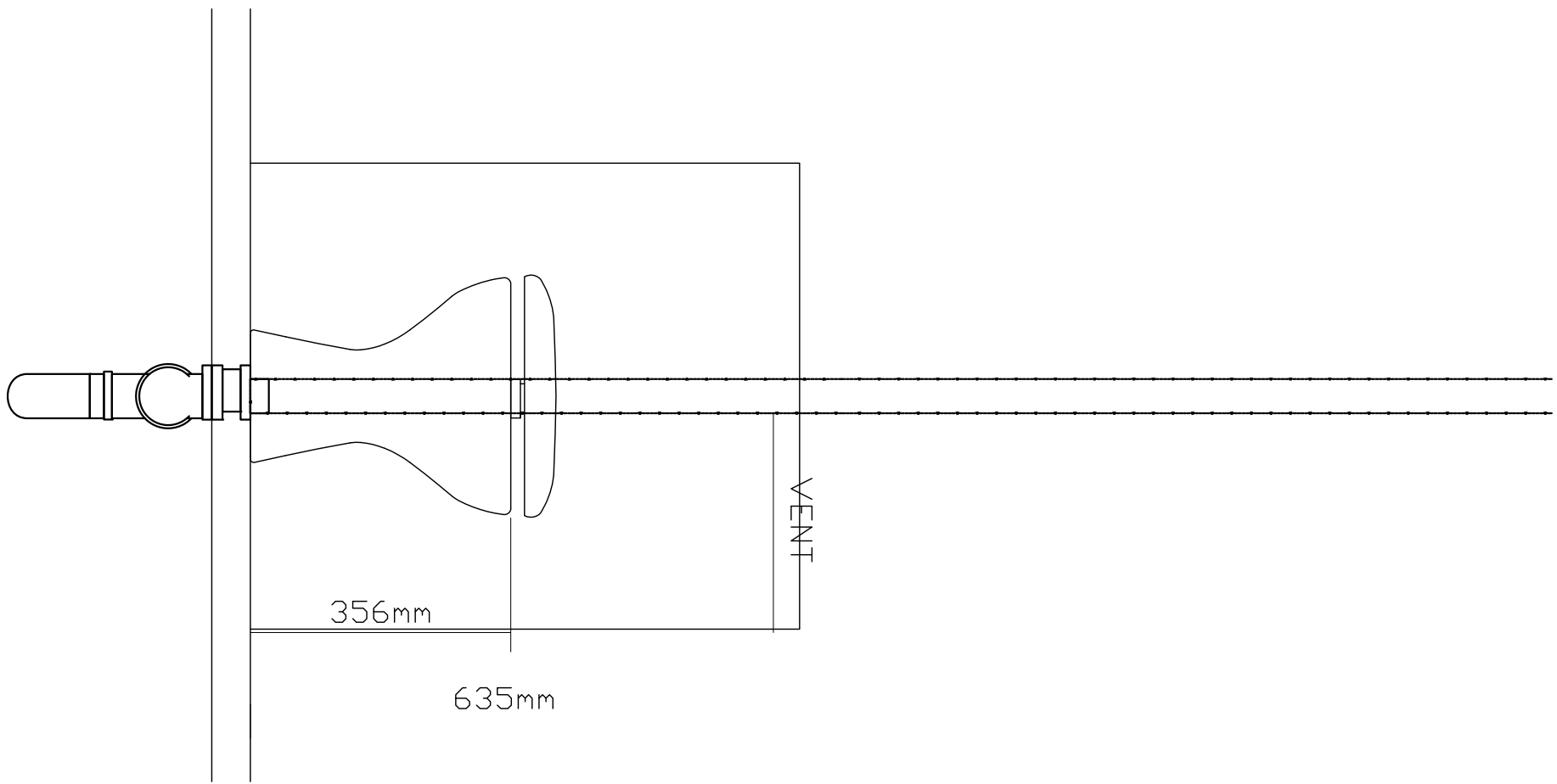
Phase	Discipline	Floor Area	Drawing Number	Revision



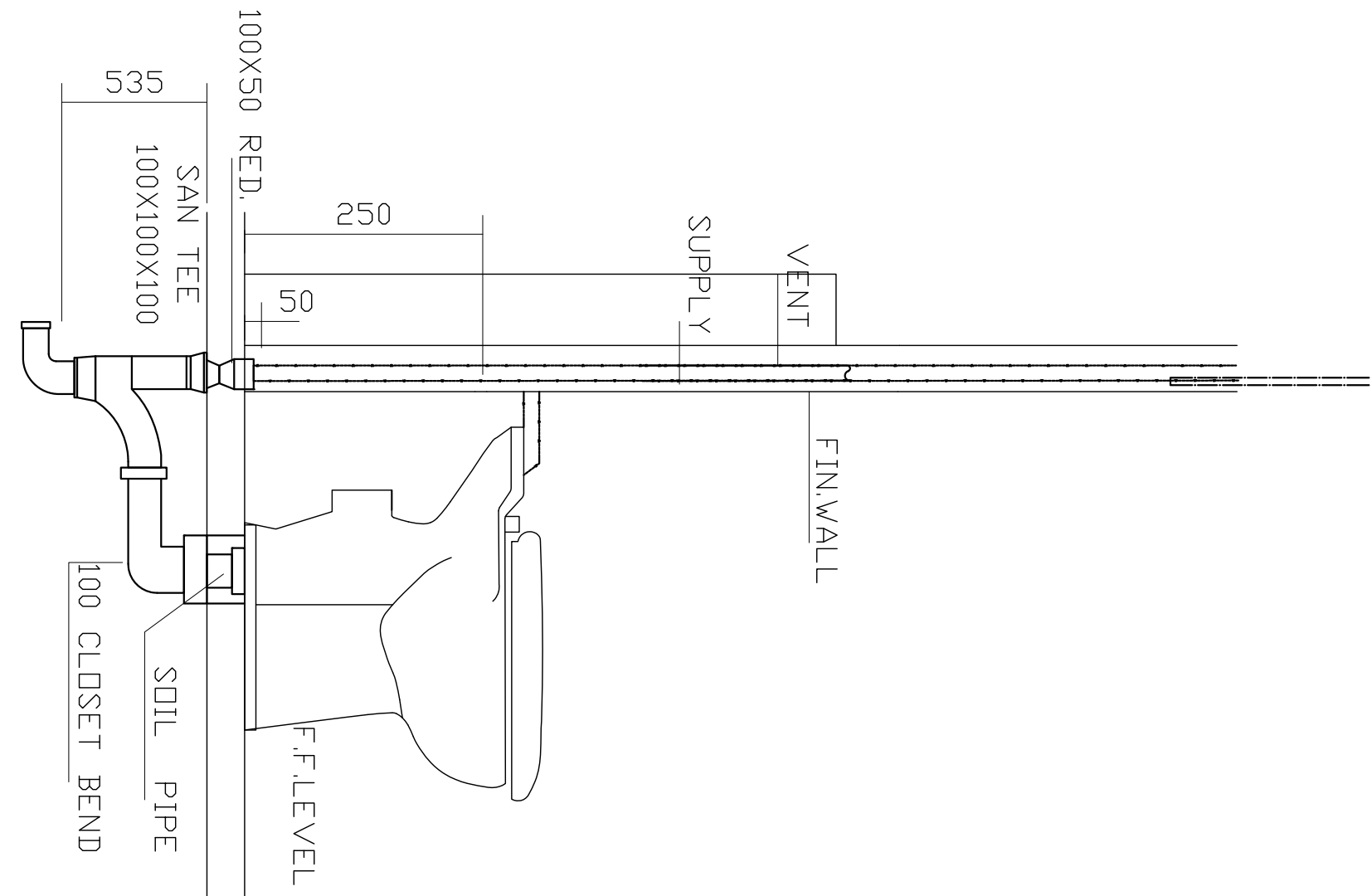
SUPPLY & DRAINAGE ISOMETRIC
N.T.S

EUROPEAN WATER CLOSET

ELEVATION



SECTION



EUROPEAN WATER CLOSET

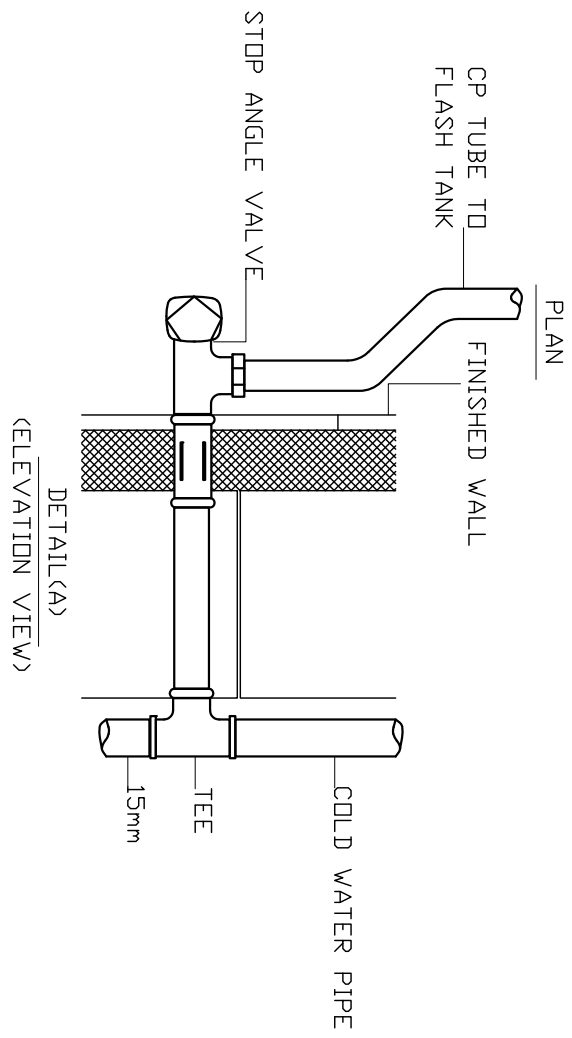
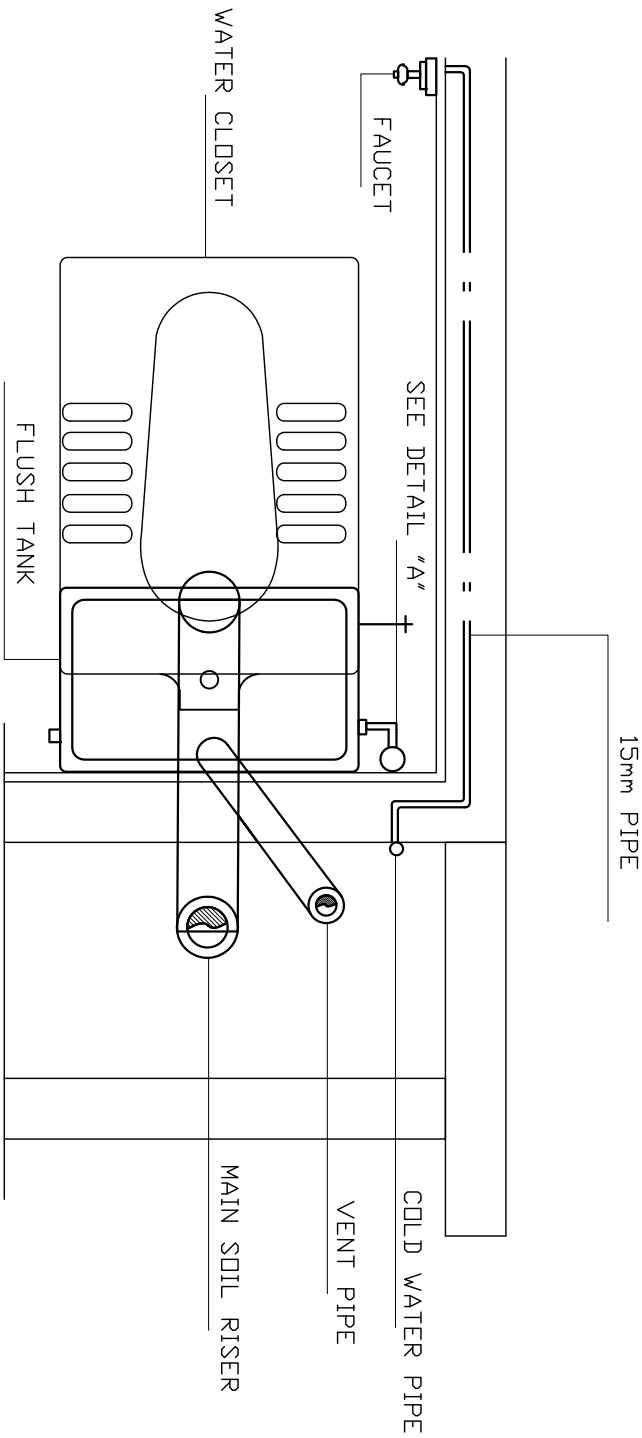
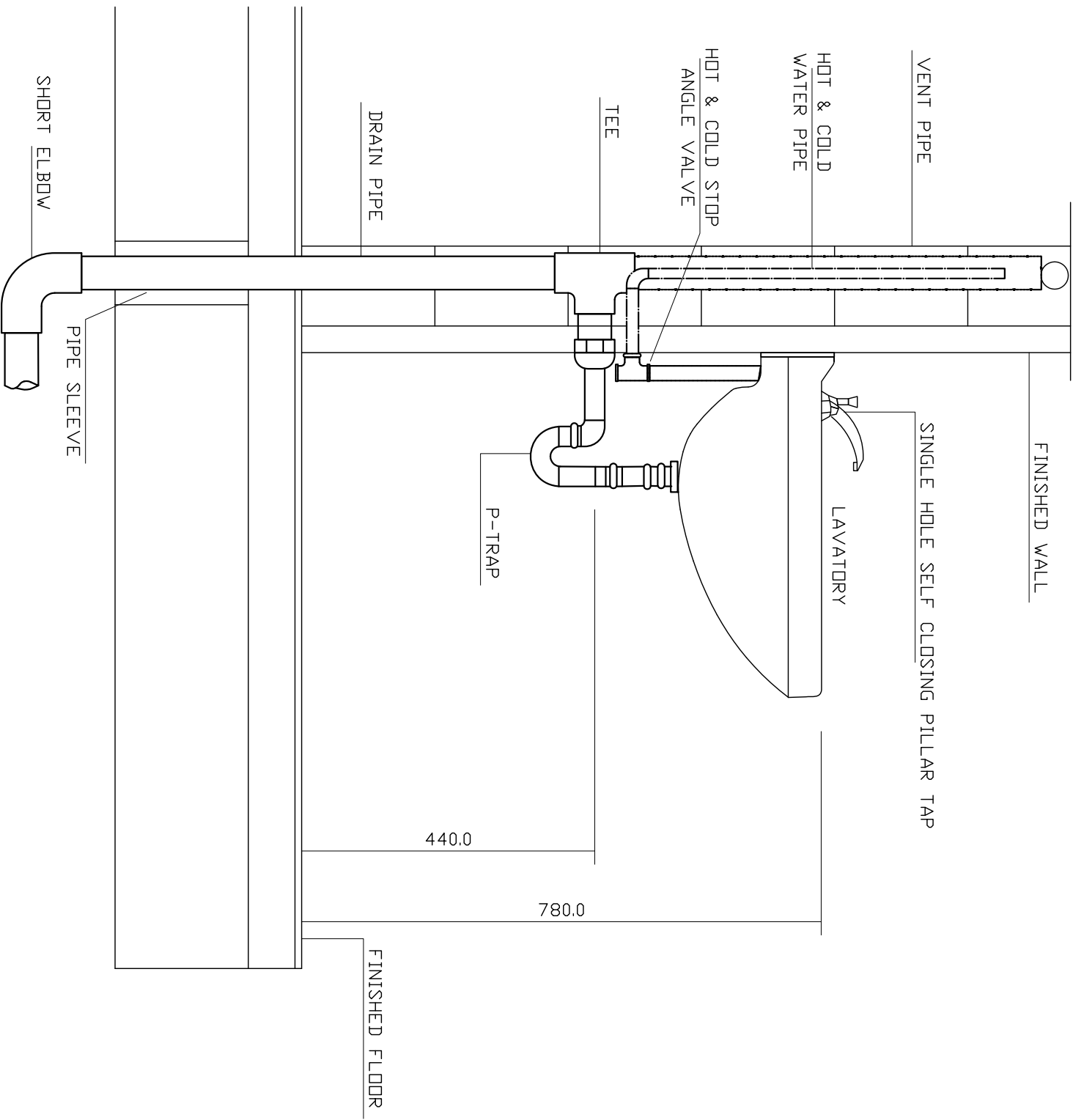
5
SCALE

N.T.S

6
SCALE

LAVATORY DETAILS

N.T.S



7
SCALE

ARABIC WATER CLOSET DETAIL

N.T.S


Key Plan



REV	BY	APP	DESCRIPTION	DATE	

Revisions

THIS DRAWING IS A COPYRIGHT. DO NOT SCALE FROM THE DRAWING. THE CONTRACTOR AND HIS SUB-CONTRACTORS ARE TO VERIFY ALL DIMENSIONS ON SITE BEFORE MAKING SHOP DRAWINGS OR COMMENCING MANUFACTURE.


United Nation Development Programme
UNDP Lebanon
Social and Local Development Programme
P.O.Box: 11-3216 Beirut, Lebanon Tel: 961 1 962491

PROGRAMME: Lebanese Host Communities
Support Programme
Support to Integrated Service
Provision at the Local Level

CONSULTANT:

BOYADJIAN & ASSOCIATES
PROJECT FINANCE AND MANAGEMENT CONSULTANTS
P.O.Box: 175 293 Beirut, Lebanon Tel: 961 1 980138

PROJECT:

HADANAT AL TOUFOL

PLOT NO.:	-	BLOCK:	-
-----------	---	--------	---

Sheet Information

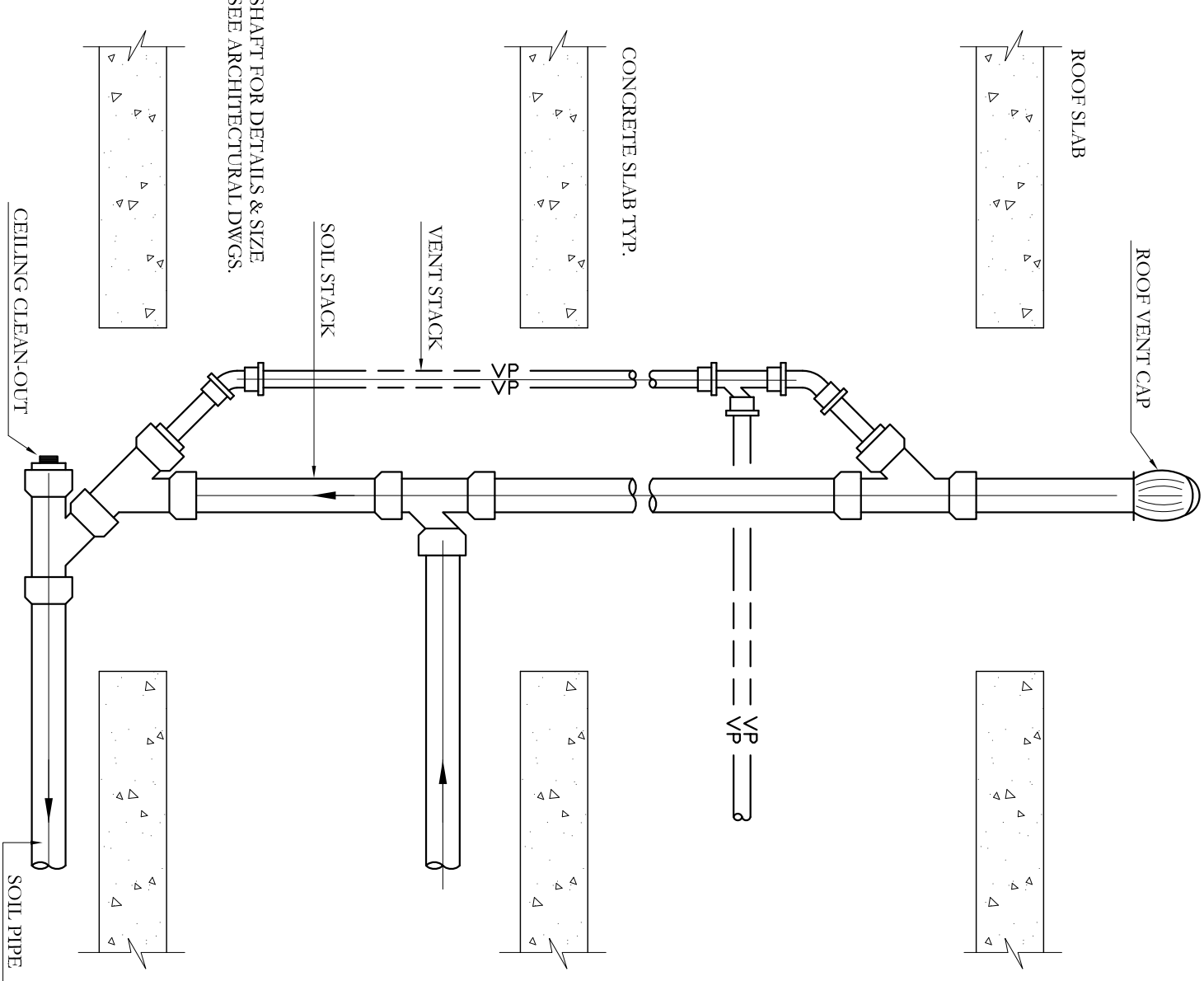
PROJECT NBR.	-	TENDER
PROJECT PHASE	-	CIVIL ENGINEERING
DISCIPLINE	-	
SECTOR	-	
BUILDING	-	
DESIGNED	-	PM
DRAWN	-	VB
CHECKED	-	VB
APPROVED	03.09.2015	
DATE		
SCALE	-	
SHEET SIZE	A1	

Sheet Title
CONSTRUCTION
DETAILS 3/7

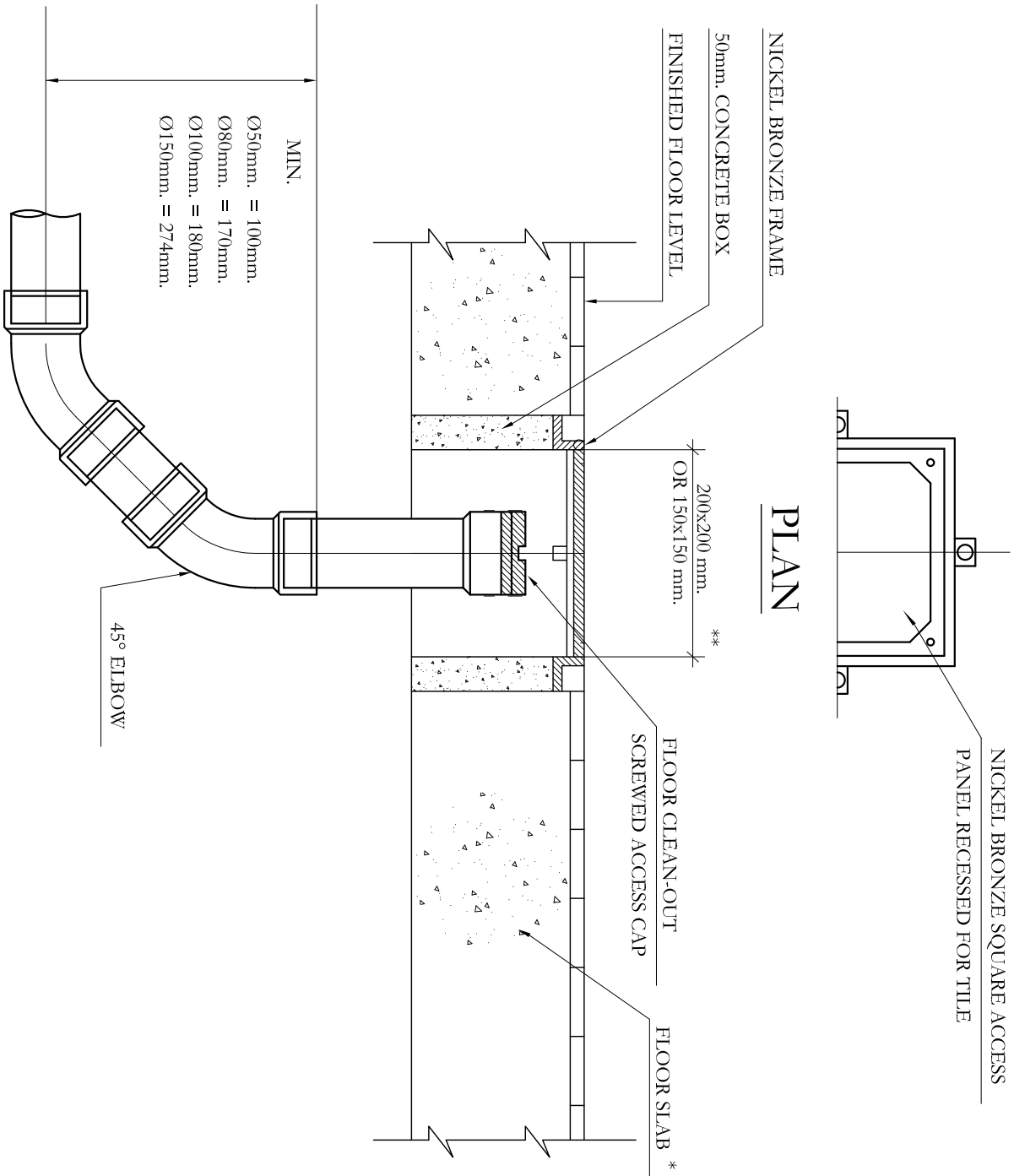
Sheet nbr.

T - C - G - 006 - R00

Phase	Discipline	Floor Area	Drawing Number	Revision
-------	------------	------------	----------------	----------

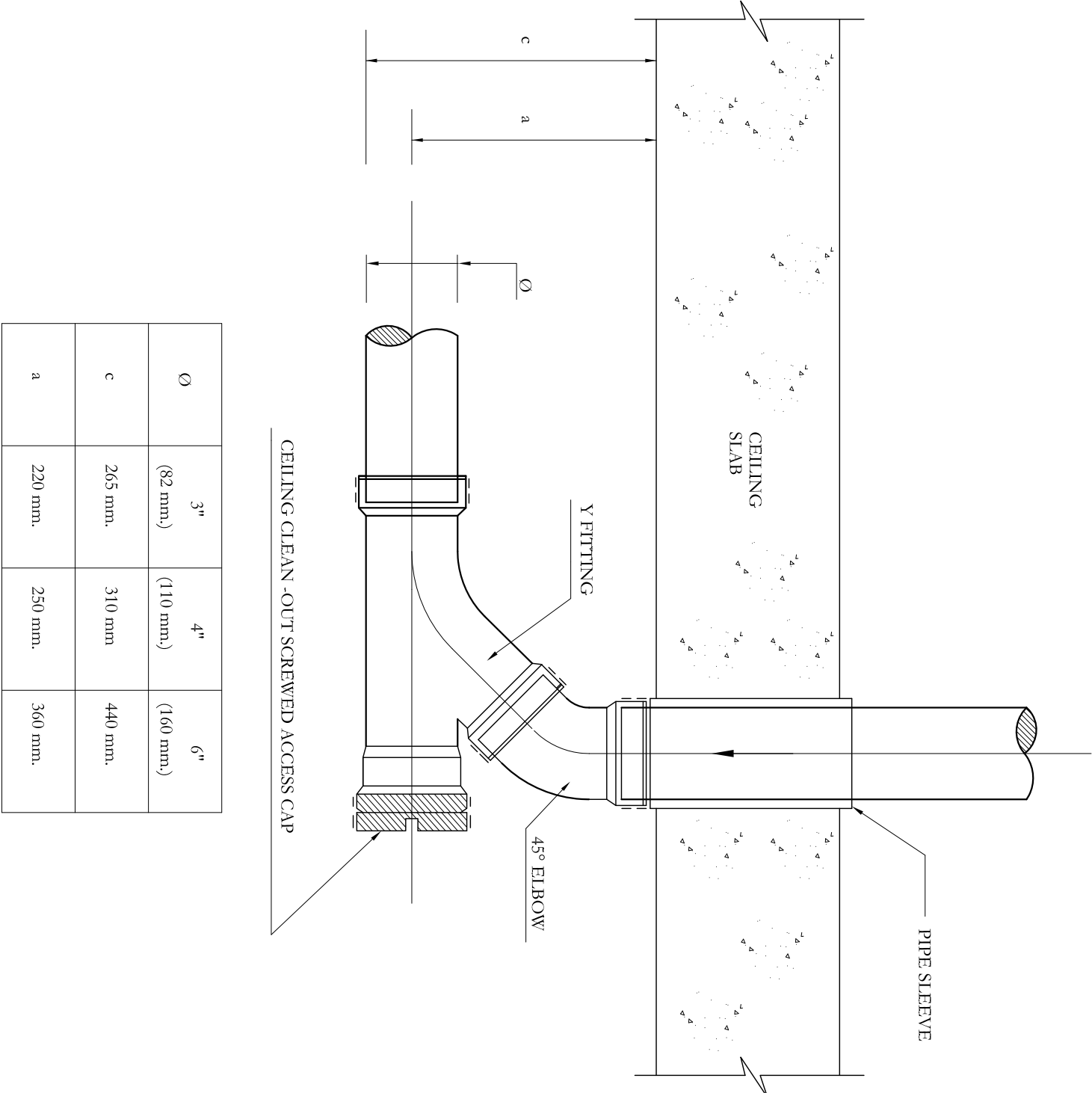


VENT & SOIL PIPE CONNECTION
AT LOW & HIGH LEVELS



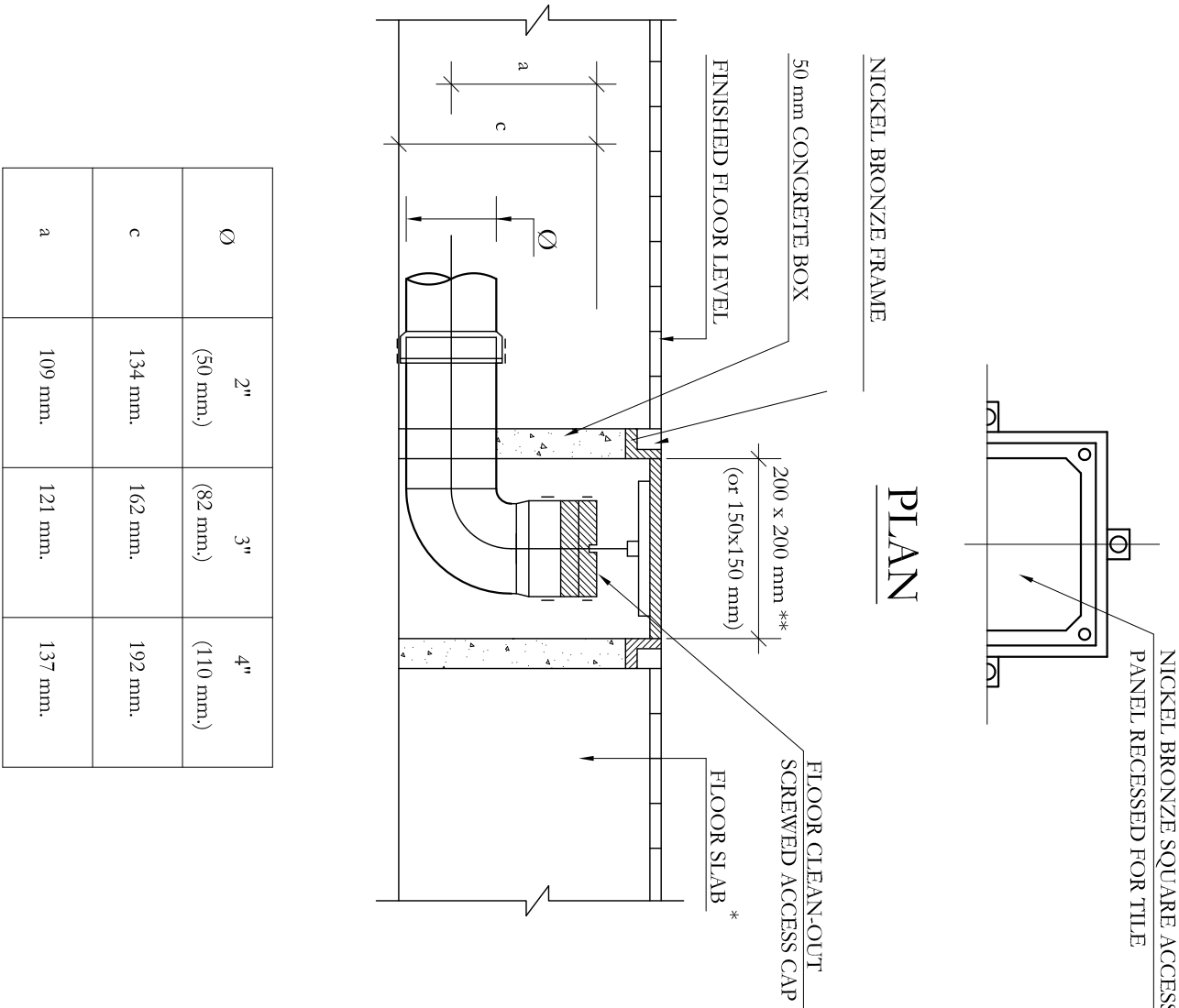
UPVC FLOOR CLEAN-OUT DETAIL

* SLAB CONSTRUCTION COULD BE ADDED FOR EACH APPLICATION INDIVIDUALLY
** THIS DIMENSION SHOULD SUIT FLOOR TILING DIMENSIONS.



Ø	2"	3"	4"	6"
	(50 mm)	(82 mm)	(110 mm)	(160 mm)
c	134 mm	265 mm	310 mm	440 mm
a	109 mm	121 mm	259 mm	360 mm

UPVC CEILING CLEAN-OUT DETAIL



Ø	2"	3"	4"
	(50 mm)	(82 mm)	(110 mm)
c	134 mm	162 mm	192 mm
a	109 mm	121 mm	137 mm

UPVC FLOOR CLEAN-OUT DETAIL
(90° INCLINED)

* SLAB CONSTRUCTION COULD BE ADDED FOR EACH APPLICATION INDIVIDUALLY
** THIS DIMENSION SHOULD SUIT FLOOR TILING DIMENSIONS.


Key Plan



REV	BY	APP	DESCRIPTION	DATE	

Revisions

THIS DRAWING IS A COPYRIGHT . DO NOT SCALE FROM THE DRAWING.
THE CONTRACTOR AND HIS SUB-CONTRACTORS ARE TO VERIFY ALL
DIMENSIONS ON SITE BEFORE MAKING SHOP DRAWINGS OR
COMMENCING MANUFACTURE.

 United Nation Development Programme
UNDP Lebanon
Social and Local Development Programme
P.O.Box: 11-3216 Beirut, Lebanon Tel: 961 1 962491

PROGRAMME: Lebanese Host Communities
Support Programme
Support to Integrated Service
Provision at the Local Level

CONSULTANT: BOYADJIAN & ASSOCIATES
PROJECT FINANCE AND MANAGEMENT CONSULTANTS
P.O.Box: 175 293 Beirut, Lebanon Tel: 961 1 980138

PROJECT: HADANAT AL TOUFOL

PLOT NO.: - **BLOCK:** -

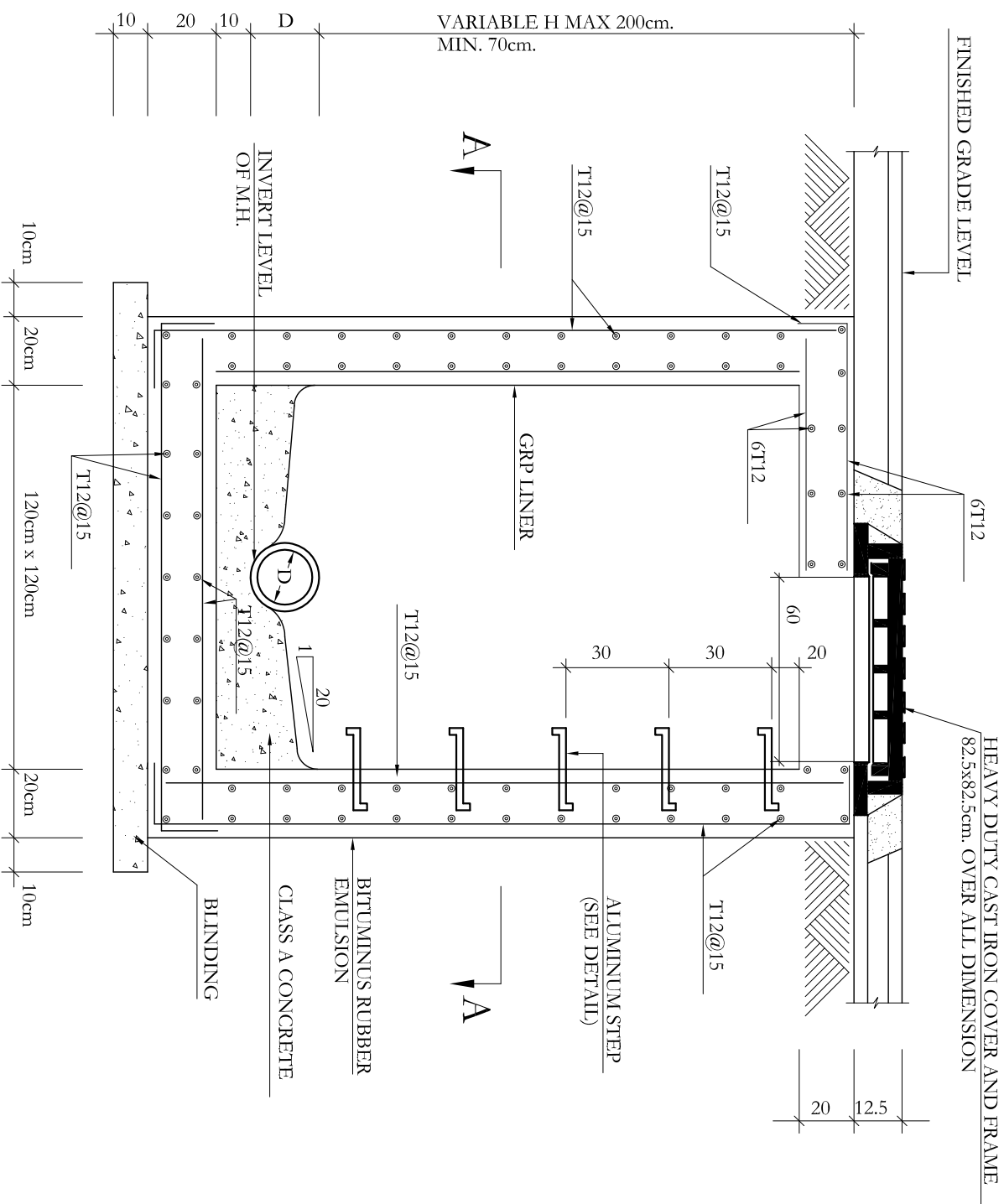
Sheet Information

PROJECT NBR.	-
PROJECT PHASE	TENDER
DISCIPLINE	CIVIL ENGINEERING
SECTOR	-
BUILDING	-
DESIGNED	-
DRAWN	PM
CHECKED	VB
APPROVED	VB
DATE	03.09.2015
SCALE	-
SHEET SIZE	A1

Sheet Title
**CONSTRUCTION
DETAILS 4/7**

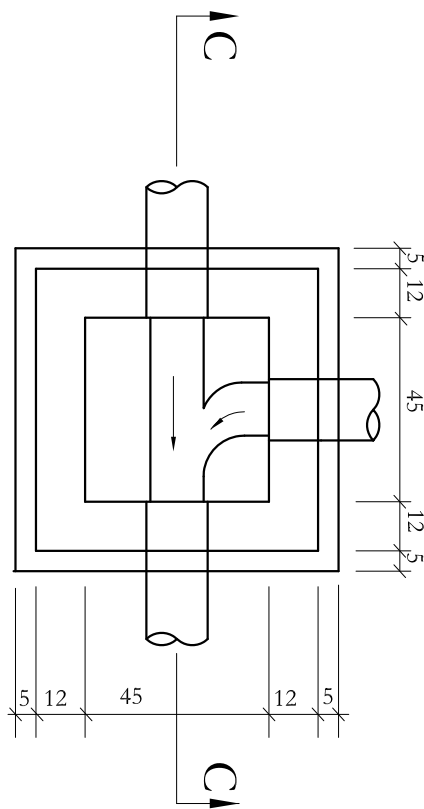
Sheet nbr.
T - C - G - 007 - R00

Phase	Discipline	Floor Area	Drawing Number	Revision
-------	------------	------------	----------------	----------



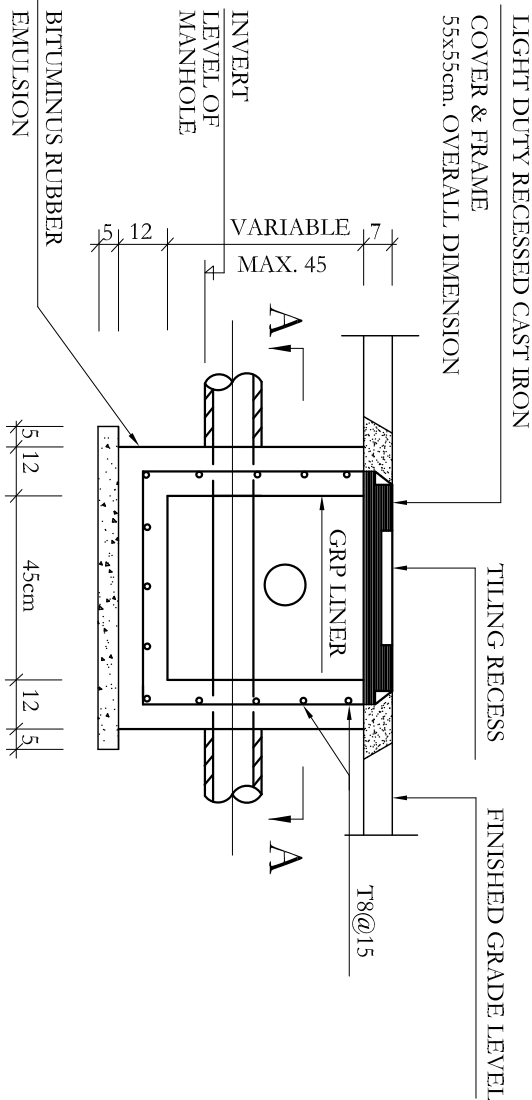
MANHOLE TYPE I

SCALE: 1/20



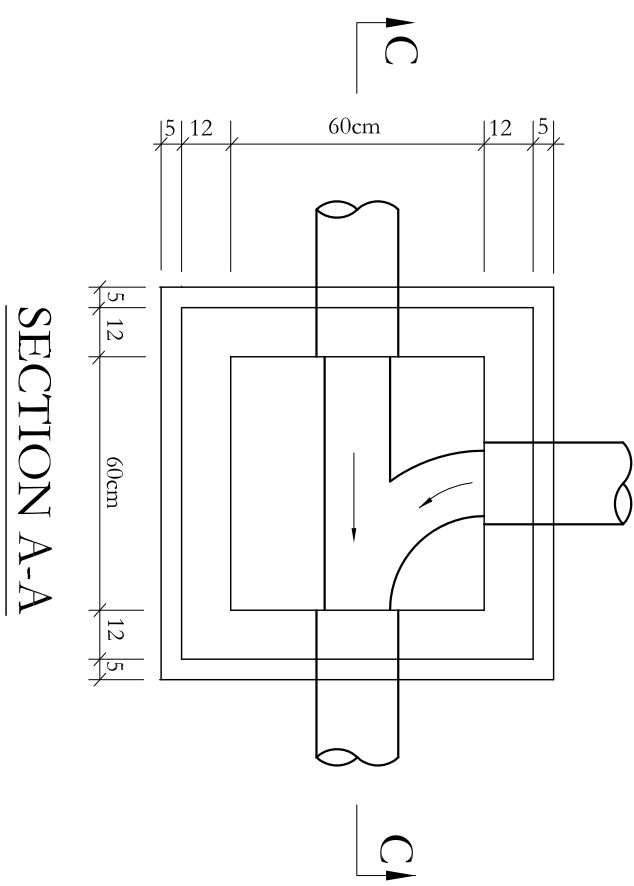
SECTION A-A

SCALE: 1/20

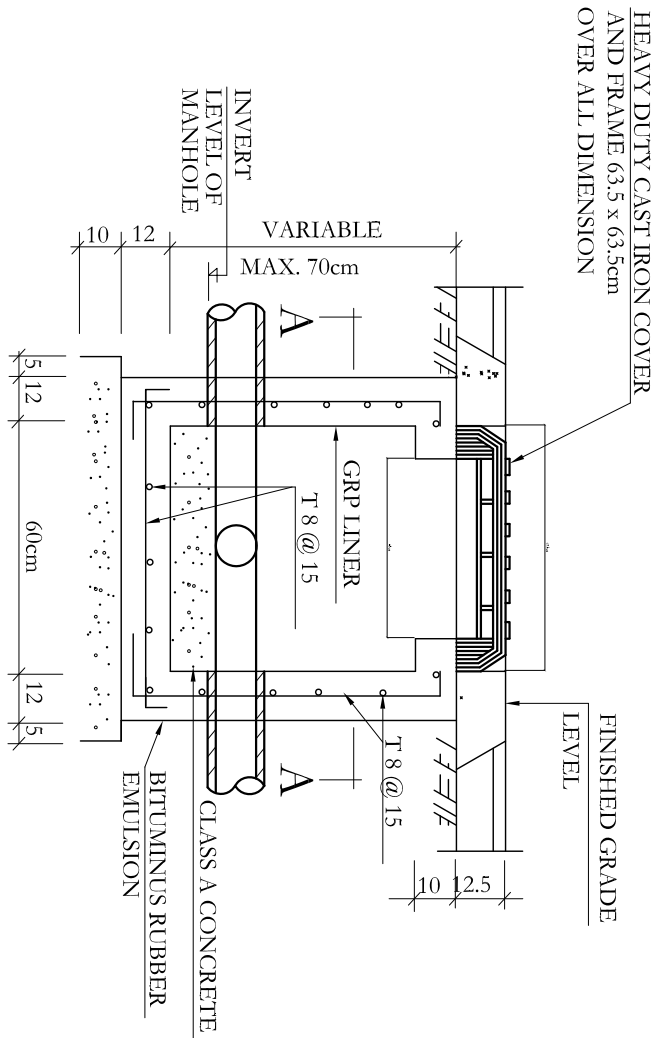


SECTION C-C
INSPECTION CHAMBER
TYPE II

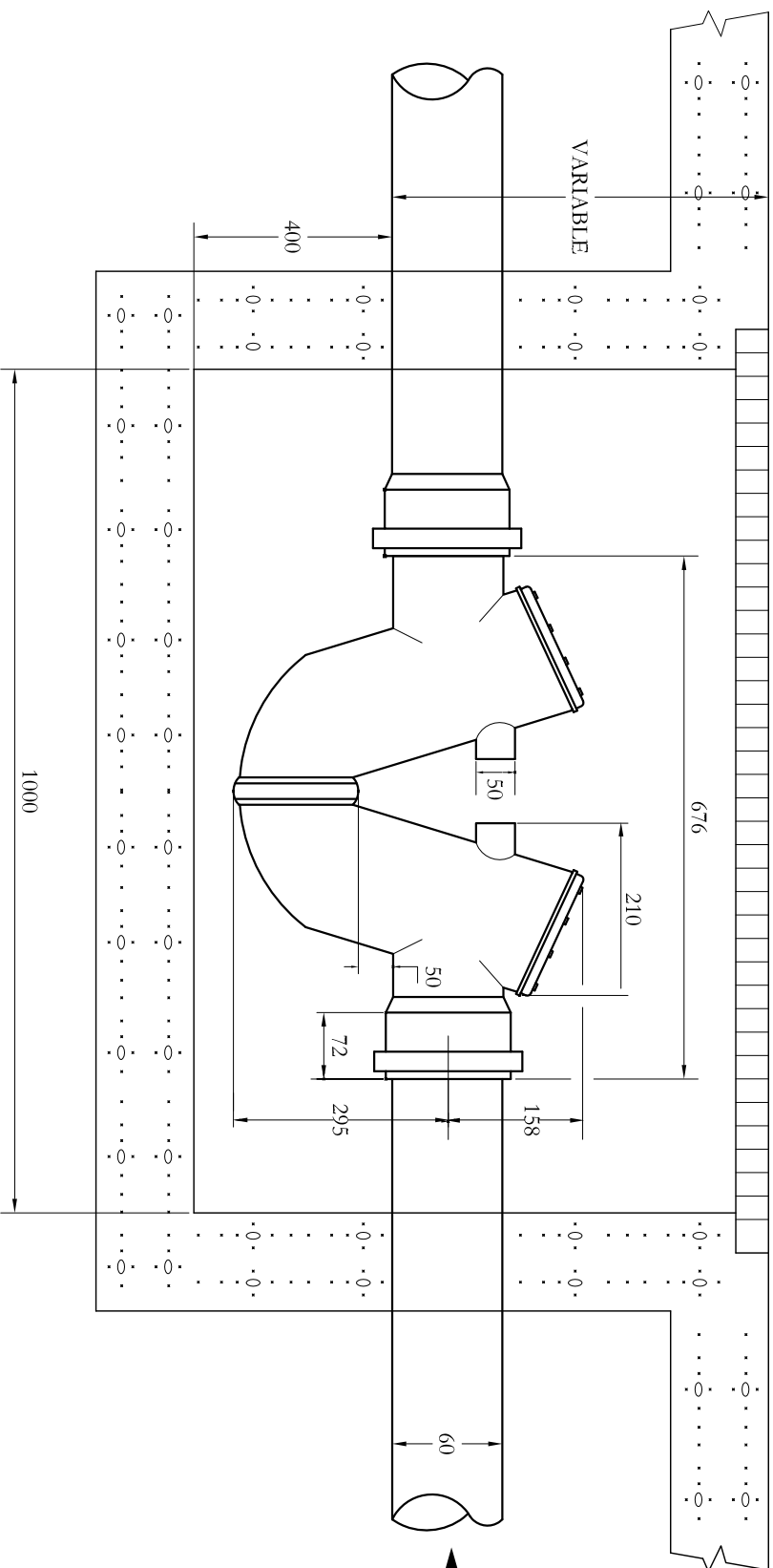
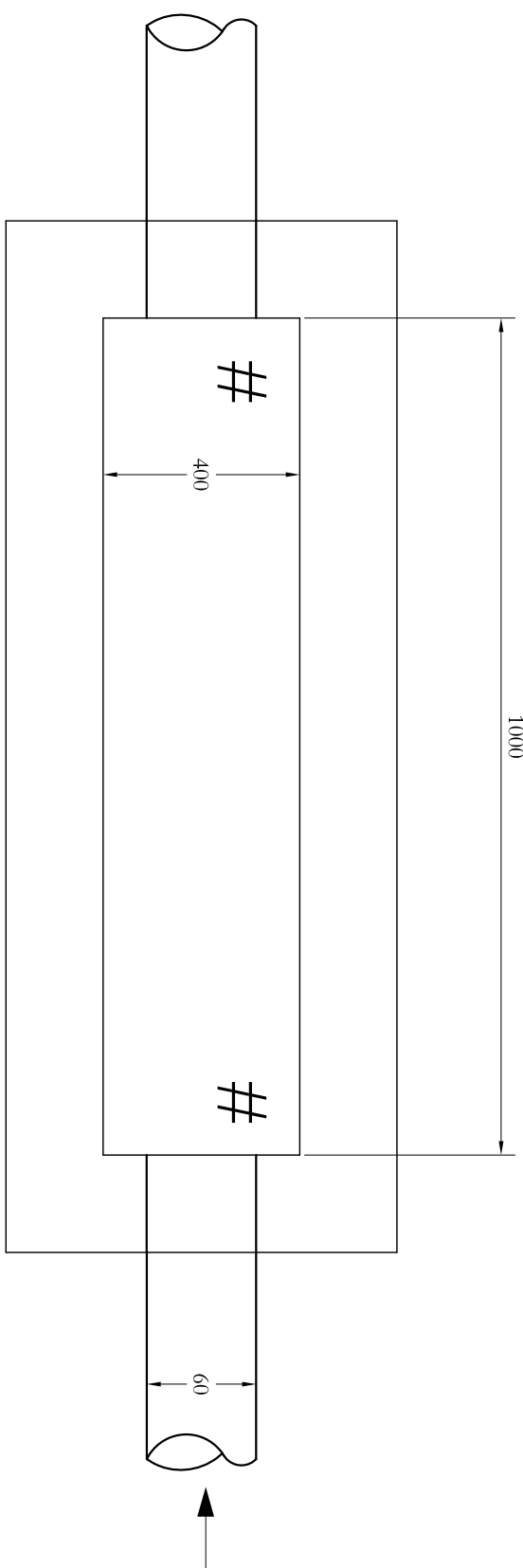
SCALE: 1/20



SECTION A-A



SECTION C-C
INSPECTION CHAMBER
TYPE I



GULLY TRAP (GT)

Key Plan



REV	BY	APP	DESCRIPTION	DATE

Revisions

THIS DRAWING IS A COPYRIGHT. DO NOT SCALE FROM THE DRAWING. THE CONTRACTOR AND HIS SUB-CONTRACTORS ARE TO VERIFY ALL DIMENSIONS ON SITE BEFORE MAKING SHOP DRAWINGS OR COMMENCING MANUFACTURE.

United Nation Development Programme
UNDP Lebanon
Social and Local Development Programme
P.O.Box: 114-3216 Beirut, Lebanon Tel: 961 1 962491

PROGRAMME: Lebanese Host Communities Support Programme
Support to Integrated Service Provision at the Local Level

CONSULTANT: BOYADJIAN & ASSOCIATES
PROJECT FINANCE AND MANAGEMENT CONSULTANTS
P.O.Box: 175 293 Beirut, Lebanon Tel: 961 1 980138

PROJECT: HADANAT AL TOUFOL

PLOT NO.:	-	BLOCK:	-
-----------	---	--------	---

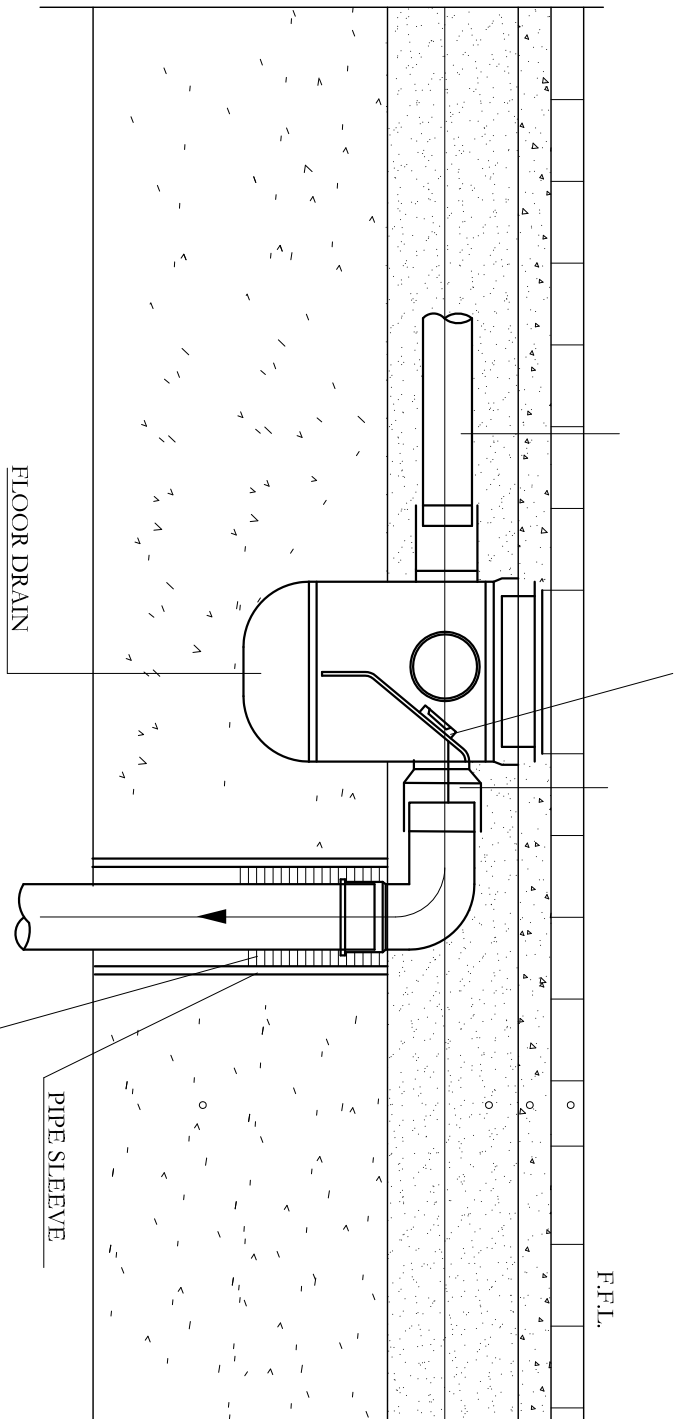
Sheet Information

PROJECT NBR.	-	TENDER
PROJECT PHASE		CIVIL ENGINEERING
DISCIPLINE		
SECTOR	-	
BUILDING	-	
DESIGNED	-	
DRAWN	PM	
CHECKED	VB	
APPROVED	VB	
DATE	03.09.2015	
SCALE	-	
SHEET SIZE	A1	

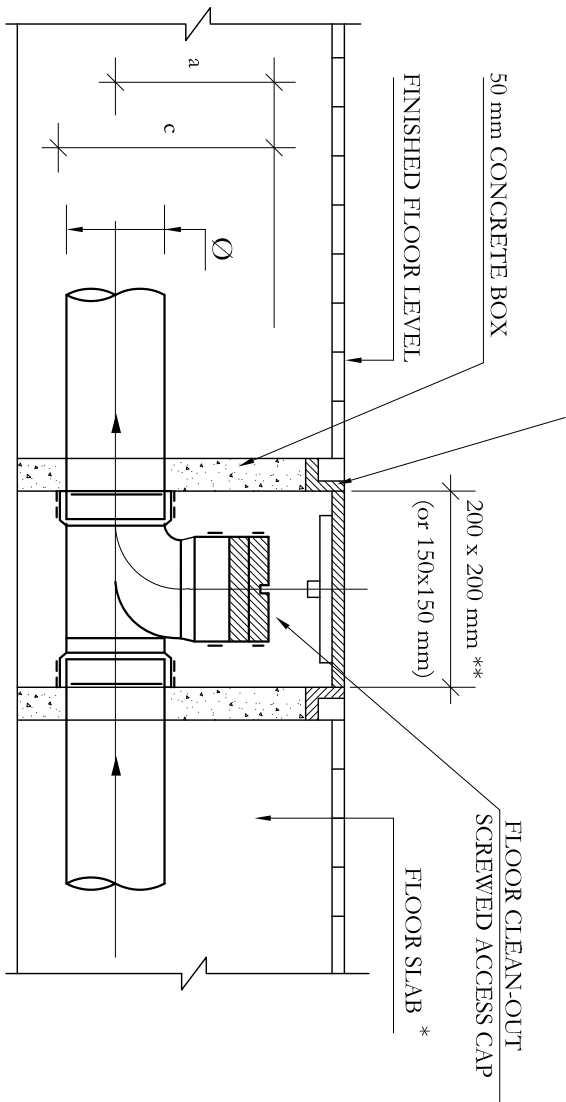
Sheet Title
CONSTRUCTION
DETAILS 5/7

Sheet nbr.
T - C - G - 008 - R00

Phase	Discipline	Floor Area	Drawing Number	Revision
-------	------------	------------	----------------	----------



UPVC FLOOR DRAIN WITH CLEAN OUT

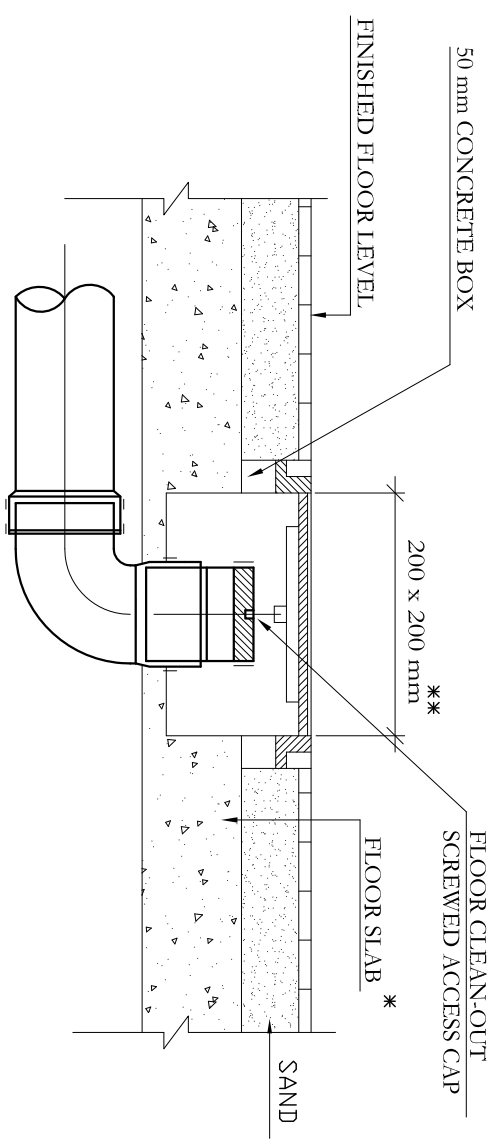
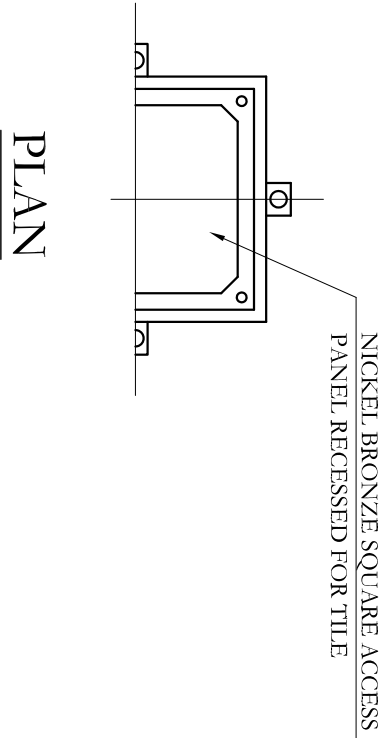


Ø	3"	4"	6"
	(82 mm)	(110 mm)	(160 mm)
c	205 mm.	250 mm.	250 mm.
a	160 mm.	180 mm.	170 mm.

UPVC FLOOR CLEAN-OUT DETAIL

* SLAB CONSTRUCTION COULD BE ADDED FOR EACH APPLICATION INDIVIDUALLY

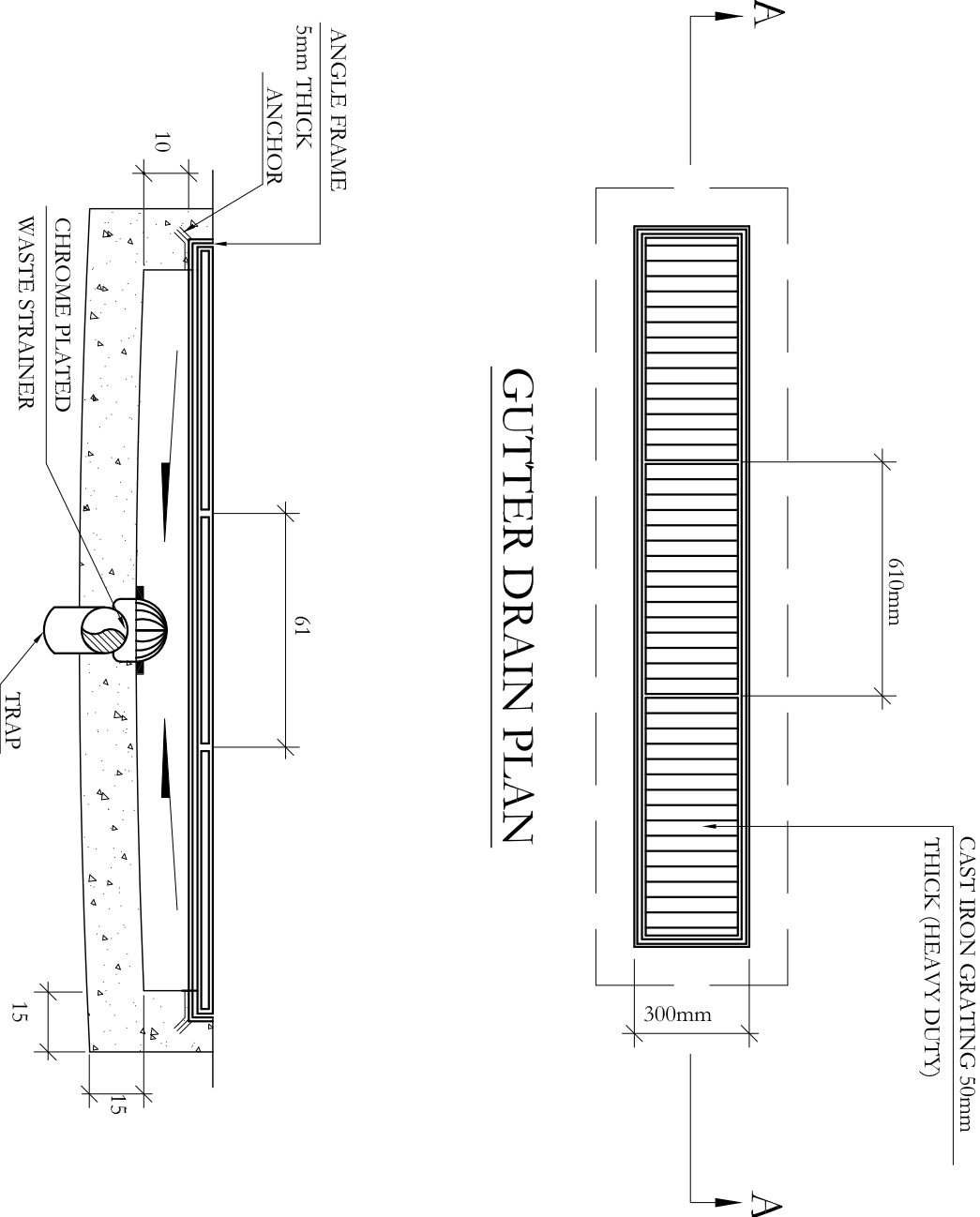
** THIS DIMENSION SHOULD SUIT FLOOR TILING DIMENSIONS.



UPVC FLOOR CLEAN-OUT DETAIL
(90° INCINED)

* SLAB CONSTRUCTION COULD BE ADDED FOR EACH APPLICATION INDIVIDUALLY

** THIS DIMENSION SHOULD SUIT FLOOR TILING DIMENSIONS.

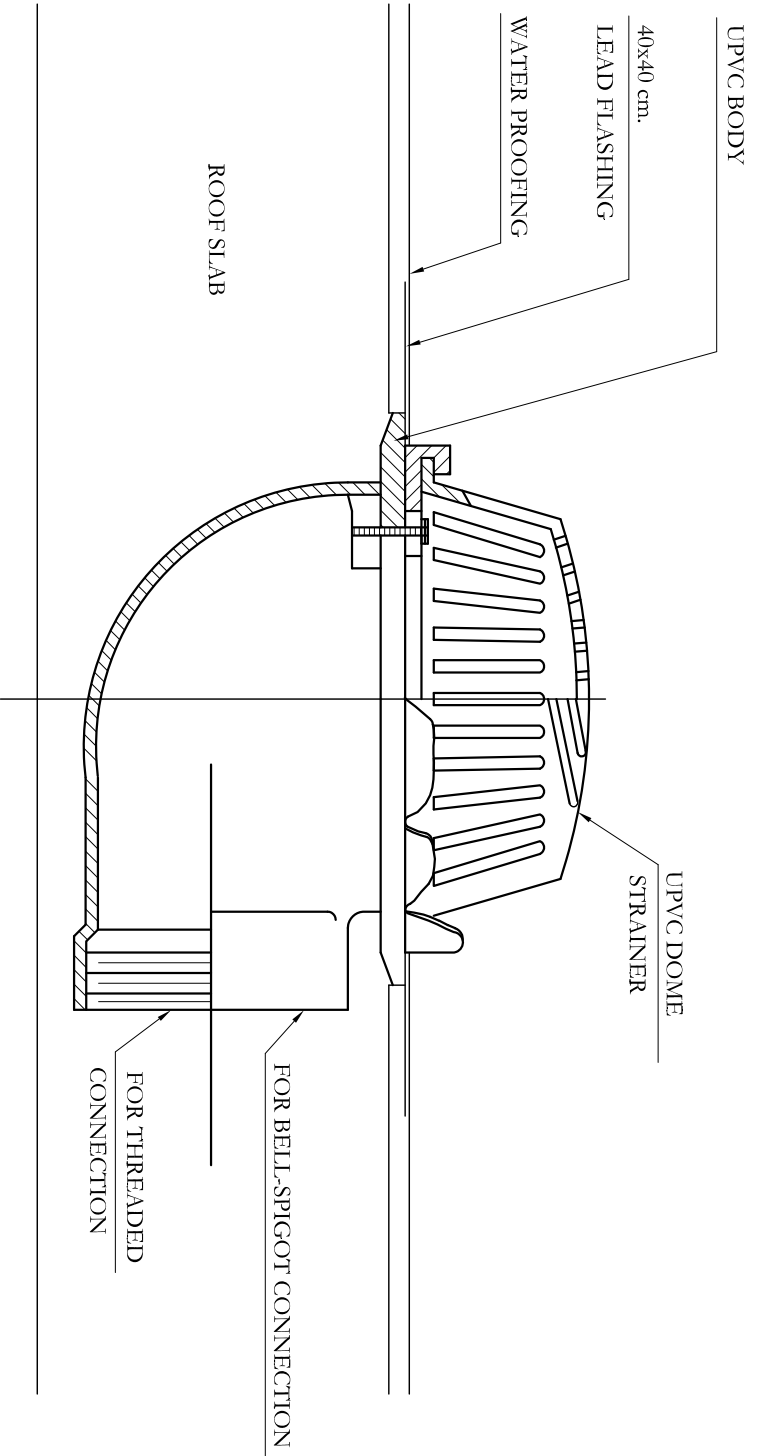


GUTTER DRAIN PLAN

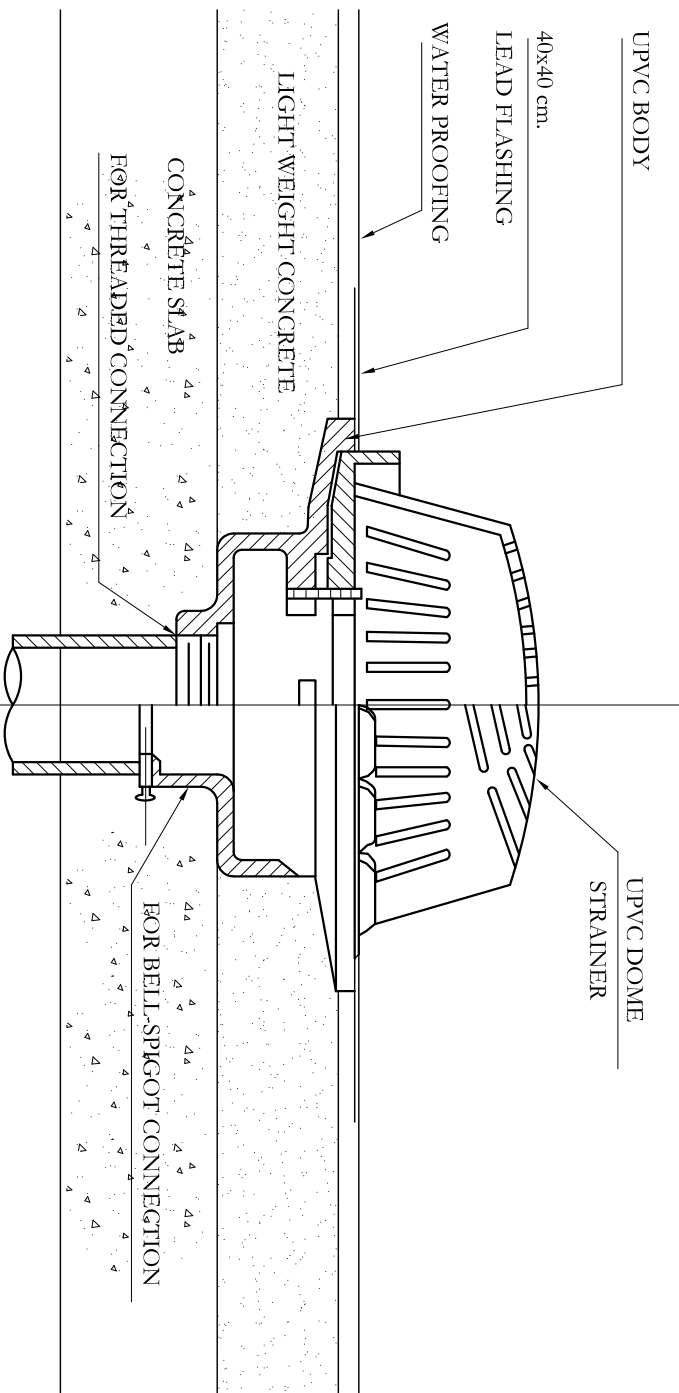
SECTION A-A

GRATING DETAIL

SCALE: 1/25



ROOF DRAIN SIDE OUTLET
DETAIL



ROOF DRAIN BOTTOM OUTLET
DETAIL

Key Plan



REV	BY	APP	DESCRIPTION	DATE	

Revisions

THIS DRAWING IS A COPYRIGHT. DO NOT SCALE FROM THE DRAWING.
THE CONTRACTOR AND HIS SUB-CONTRACTORS ARE TO VERIFY ALL
DIMENSIONS ON SITE BEFORE MAKING SHOP DRAWINGS OR
COMMENCING MANUFACTURE.

United Nation Development Programme
UNDP Lebanon
Social and Local Development Programme
P.O.Box: 11-3216 Beirut, Lebanon Tel: 961 1 962491

PROGRAMME: Lebanese Host Communities
Support Programme
Support to Integrated Service
Provision at the Local Level

CONSULTANT:

BOYADJIAN & ASSOCIATES
PROJECT FINANCE AND MANAGEMENT CONSULTANTS
P.O.Box: 175 293 Beirut, Lebanon Tel: 961 1 980138

PROJECT:

HADANAT AL TOUFOL

PLOT NO.:	-	BLOCK:	-
-----------	---	--------	---

Sheet Information

PROJECT NBR.	-	TENDER
PROJECT PHASE		CIVIL ENGINEERING
DISCIPLINE		
SECTOR	-	
BUILDING	-	
DESIGNED	-	
DRAWN	PM	
CHECKED	VB	
APPROVED	VB	
DATE	03.09.2015	
SCALE	-	
SHEET SIZE	A1	

Sheet Title
CONSTRUCTION
DETAILS 6/7

Sheet nbr.

T - C - G - 009 - R00

Phase	Discipline	Floor Area	Drawing Number	Revision
-------	------------	------------	----------------	----------

Key Plan



REV	BY	APP	DESCRIPTION	DATE	

Revisions

THIS DRAWING IS A COPYRIGHT. DO NOT SCALE FROM THE DRAWING. THE CONTRACTOR AND HIS SUB-CONTRACTORS ARE TO VERIFY ALL DIMENSIONS ON SITE BEFORE MAKING SHOP DRAWINGS OR COMMENCING MANUFACTURE.

United Nation Development Programme
UNDP Lebanon
Social and Local Development Programme
P.O.Box: 11-3216 Beirut, Lebanon Tel: 961 1 962491

PROGRAMME: Lebanese Host Communities Support Programme
Support to Integrated Service Provision at the Local Level

CONSULTANT: BOYADJIAN & ASSOCIATES
PROJECT FINANCE AND MANAGEMENT CONSULTANTS
P.O.Box: 175 293 Beirut, Lebanon Tel: 961 1 980138

PROJECT: HADANAT AL TOUFOL

PLOT NO.: - BLOCK: -

Sheet Information

PROJECT NBR.	-	TENDER
PROJECT PHASE		CIVIL ENGINEERING
DISCIPLINE		
SECTOR	-	
BUILDING	-	
DESIGNED	-	
DRAWN	PM	
CHECKED	VB	
APPROVED	VB	
DATE	03.09.2015	
SCALE	-	
SHEET SIZE	A1	

Sheet Title
CONSTRUCTION
DETAILS 7/7

Sheet nbr.

T - C - G - 010 - R00

Phase	Discipline	Floor Area	Drawing Number	Revision
-------	------------	------------	----------------	----------