

REPUBLIC OF TAJIKISTAN

Private Buisnessman Aslam Pochoev



PROJECT WORKING DESIGN

*Construction of 5 additional classrooms in secondary
school N 47 of Safedob Village, Jamoat Dashtijum, Shamsiddin Shohin district.*

ALBUM - I

AP - Architectural-planing solution

Kulob - 2014

LIST OF WORKING DESIGN OF THE MAIN SET

<i>№</i>	<i>Page</i>	<i>Name</i>
<i>AP - Architectural Part</i>		
<i>1</i>	<i>APS-1</i>	<i>Cover Sheet</i>
<i>2</i>		<i>Cover sheet 1</i>
<i>3</i>	<i>APS-2</i>	<i>General data (contenses of the album)</i>
<i>4</i>	<i>APS-3</i>	<i>General data (contin.)</i>
<i>5</i>	<i>APS-4</i>	<i>Decoration of the premises and fasades</i>
<i>6</i>	<i>APS-5</i>	<i>General view (perspective)</i>
<i>7</i>	<i>APS-6</i>	<i>Fasade in axis 1-4</i>
<i>8</i>	<i>APS-7</i>	<i>Fasade in axis 4-1</i>
<i>9</i>	<i>APS-8</i>	<i>Fasade in axis A-G</i>
<i>10</i>	<i>APS-9</i>	<i>Fasade in axis G-A</i>
<i>11</i>	<i>APS-10</i>	<i>Ground floor plan</i>
<i>12</i>	<i>APS-11</i>	<i>Section 1-1</i>
<i>13</i>	<i>APS-12</i>	<i>Section 2-2</i>
<i>14</i>	<i>APS-13</i>	<i>The part of the fasade/detail</i>
<i>15</i>	<i>APS-14</i>	<i>Fasade in axis 1-4 (colour solution)</i>
<i>16</i>	<i>APS-15</i>	<i>Fasade in axis A-G (colour solution)</i>
<i>17</i>	<i>APS-16</i>	<i>Fasade in axis G-A (colour solution)</i>
<i>18</i>	<i>APS-17</i>	<i>Floor plan</i>
<i>19</i>	<i>APS-18</i>	<i>Roof plan</i>
<i>20</i>	<i>APS-19</i>	<i>Windows specifications</i>
<i>21</i>	<i>APS-20</i>	<i>Door specifications</i>
<i>22</i>	<i>APS-21</i>	<i>Plan of the technological equipment</i>
<i>23</i>	<i>APS-22</i>	<i>Plan of the placement of furniture/specification of equipment</i>

BORDEREAU ALBUM MAIN SET

<i>indication</i>	<i>Name</i>
<i>ГП - GP</i>	<i>General plan</i>
<i>AP - APS</i>	<i>Architectural-planing solution</i>
<i>КЖ - CC</i>	<i>Constraction Concept</i>
<i>ОВ - HV</i>	<i>Heating and Ventilation</i>
<i>ЭО - Ei & FA</i>	<i>Electric illumination and Fire alarm</i>
<i>СЕ</i>	<i>Cost estimation</i>

TEI - TECHNICAL ECONOMICAL INDICATORS

<i>№</i>	<i>Name</i>	<i>Unit</i>	<i>Q-ty</i>
<i>1</i>	<i>Building volume</i>	<i>м³</i>	<i>1887.30</i>
	<i>-above mark +0,00</i>	<i>м³</i>	<i>1583.55</i>
	<i>- below mark -0,00</i>	<i>м³</i>	<i>303.75</i>
<i>2</i>	<i>Building area</i>	<i>м²</i>	<i>405.00</i>
<i>3</i>	<i>Stories</i>	<i>story</i>	<i>1</i>
<i>4</i>	<i>Presense additional floor (techn/floor, cellare, mansards and others)</i>	<i>story</i>	<i>----</i>

						APS				
						Construction of 5 additional classrooms in secondary N 47 of Safedob village,Jamoat Dashtijum, Shamsiddin Shohin district.				
dim.	Q-ty	Page	№ doc.	Signature	Data	Architectural-planing solution		Stage	Page	Pages
GIP	M. Shamsov							WD	2	
GAP	A. Pochoev									
						Contenses of the album		Private Buisnessman Aslam Pochoev License XT-23 №0000060		
Developed	F. Pochoev									
Checked	M. Shamsov									

Explanatory note

I. Common part

The project of the building "Construction of 5 additional classrooms in secondary school N 47 of Safedob village, Jamoat Dashtijum, Shamsiddin Shohin district, one-story brick building with longitudinal and transverse walls with the size of the walls in terms of axis - 15 000 × 25 000 mm.

II. Feature of the project.

Main feature of the project:

Natural climatic region	- IVA
Seismicity	- 7 points
Designed outdoor air temperature	-130C
Regulatory snow load	- 70 kgs/m2
Grade of durability	- II
Grade of refractoriness	- II
Category of building	- II

III. Architectural planing part

The story building is solving with one volume "N 47 of Safedob village, Jamoat Dashtijum, Shamsiddin Shohin district." solved functionally and appropriately.

The height of the 1st floor from the floor to the floor is 3.0m.

For the mark of 0,000 accepted the mark of floor of 1st floor, which corresponds to absolute mark of _____ by surveying.

IV. Constructive part

The story building of "N 47 of Safedob village, Jamoat Dashtijum, Shamsiddin Shohin district" is made of stone and frame structures of the rectangular form with supporting of longitudinal and transverse outer and inner walls with reinforced concrete cores and with grids of horizontal reinforcement in accordance with СНиП II-7-81.

Spatial rigidity of the building is providing by:

- By the vertical plane in the transverse and longitudinal directions of the joint work of brick walls with including of reinforced concrete cores.
- By the horizontal plane in the transverse and longitudinal directions of the joint work of monolithic reinforced concrete slabs.

According to the task of design the development of the project, the following design solution was accepted:

- Concretes - monolithic reinforced concrete.
The stone will be arranged around the building in width 1.2m from concrete type of B7.5.
- Walls - are made of burnt bricks thick of 380mm, and reinforced with concrete core and columns, and reinforced by vertical mesh of Ø5Bp-I through every 700mm.
The base of walls is composed of burnt brick and the perimeter of the building is arranged with waterproof by mortar of cement contains of 1:2 and the thickness of 20mm.
- Overlaps - monolithic reinforced concrete.
- Roof - wooden
- Roofing - metallic tile painted in dry.
- Roofing desided to wooden structures on the rafter system with wooden crate - 300mm & covered with roofing metal tile. For the protection of wooden structure, elements, parts from rotting and fire impregnated with a solution of phosphorus-acidic ammonium and silfur acid in a proportion 1:1.
With roof slopes less than 30% or 15% rebate should make lying and doble coat with putty Surikovii. the magnitude of bending sheet for a recumbent falz -15mm, standing falz- 20mm.
- Warmth-keeping jacket - sintering gravel 150mm. $\gamma=550$ kg/m

V. Exterior finishing of the building

The facade of the walls are pargeting by mortar from cement-lime, and after acrylic water-resistant putty with finishing by the decorative parget.

Cap will be pargeted by cement mortar and after will be used ceramic tile.

Columns, cornices, pilasters and details of facades will be pargeted by cement mortar, and after acrylic water-resistant putty with finishing by the facade paints.

Porch will be covered by ceramic tile.

VI. Interior finishing of the building

The walls will be pargeted by cement mortar and finishing by using of alabaster of thick of 3mm and after the walls will be painted by emulsion paint.

Ceilings will be filled by cement mortar and finishing by using of alabaster of thick of 2mm and after the walls will be painted by emulsion paint.

VII. Anti-seismic events.

All anti-seismic events are made according to requirements of СНиП II-81.

Bricklaying of bearing walls will be made from ordinary burnt brick type of M"75" by using of cement mortar type of M50. Bricklaying of 2nd category resists the seismic actions.

Depending on the intensities of the projected area, the walls are reinforced by horizontal grid and laid over 700mm in height with 8 points.

Around the longitudinal and transverse walls of the building at the level of covering it should be arranged by monolithic reinforced concrete and the carcass should be type of d=12mm

Project has been developed in accordance with the prevailing rules and norms and ensure a safe and explosion fire safe in opereration of the structures

Senior Engineer

M. Shamsov

							APS
dim.	Q-ty	Page	№ doc.	Signature	Data	Construction of 5 additional classrooms in secondary school NN 47 of Safedob village, Jamoat Dashtijum, Shamsiddin Shohin district.	
						Architectural-planing solution	Stage WD
							Page 3
							Pages
GIP		M. Shamsov					
GAP		A. Pochoev					
Developed		F. Pochoev				General data	Private Buisnessman Aslam Pochoev License XT-23 №0000060
Checked		M. Shamsov					

BORDEREAU OF THE DECORATING OF THE PREMISES

Name	Ceilling	Decorating of the Walls and partiton	Decorating of the bellow part of the walls and partitons	remarks
	decoration type	decoration type	decoration type	
<i>Floor plans</i>				
<i>Classrooms</i>	<i>floatwork with cement solution, alabaster screed t= 2mm , water-emulsion painting.</i>	<i>Improve plastering, alabaster screed t=3mm water emulsion painting</i>	<i>Oil painting of the wall sureface H=1,2m</i>	
<i>Corridor, foyer</i>	<i>floatwork with cement solution, alabaster screed t= 2mm , water-emulsion painting.</i>	<i>Improve plastering, alabaster screed t=3mm water emulsion painting</i>	<i>Oil painting of the wall sureface H=1,5m</i>	
<i>Porch</i>	<i>floatwork with cement solution, alabaster screed t= 2mm , water-emulsion painting.</i>	<i>Improve plastering, alabaster screed t=3mm water emulsion painting</i>		

BORDEREAU OF THE DECORATING OF THE FASADEs

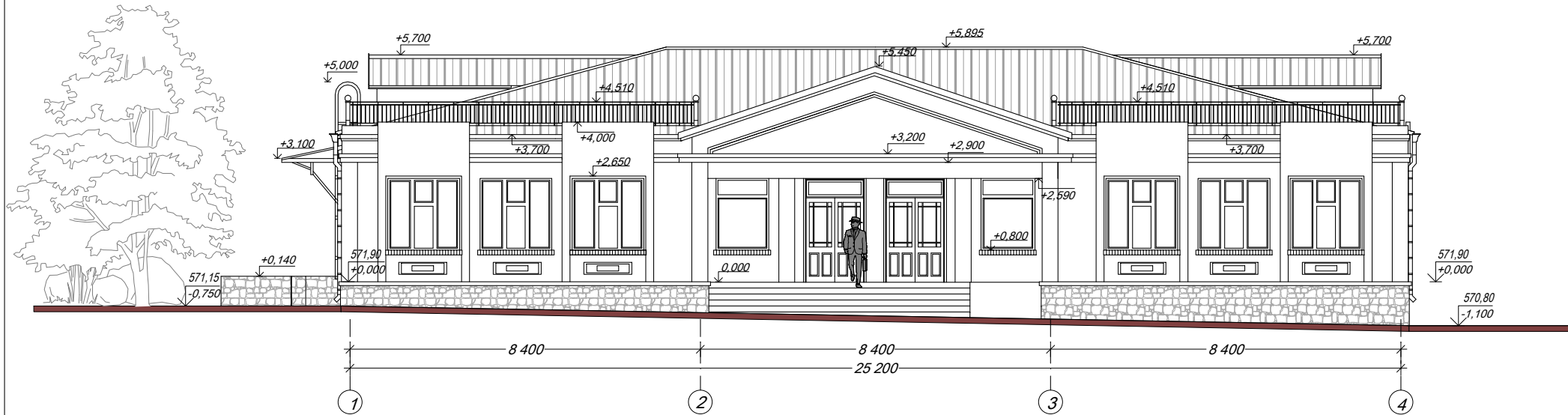
Fasade	Name	Decoration type	Re-marks
	<i>Socle</i>	<i>Seranite</i>	
	<i>Exterior walls</i>	<i>Improve plastering, exterior acrylic water - resistant putty with decorative plastering</i>	
	<i>Column, Cornice,Pier and facade details</i>	<i>Improve plastering, exterior acrylic water - resistant putty with decorative plastering</i>	
	<i>Porch</i>	<i>Seranite</i>	
	<i>Roof</i>	<i>Metal tile</i>	
	<i>Wndows</i>	<i>Metal and plastic</i>	
	<i>Doors</i>	<i>Factory-ready</i>	

REMARKS

1. This sheet is considered from APS-2 and APS-4

						APS			
						Construction of 5 additional classrooms in secondary school N 47 of Safedob village,Jamoat Dashtijum, Shamsiddin Shohin district.			
dim.	Q-ty	Page	№ doc.	Signature	Data				
						Architectural-planing solution	Stage	Page	Pages
	GIP	M. Shamsov					WD	4	
	GAP	A. Pochoev							
						General data	Private Buisnessman		
Developed	F. Pochoev						Aslam Pochoev		
Checked	M. Shamsov						License XT-23 №0000060		

FASADE in axis 1-4 M 1:100

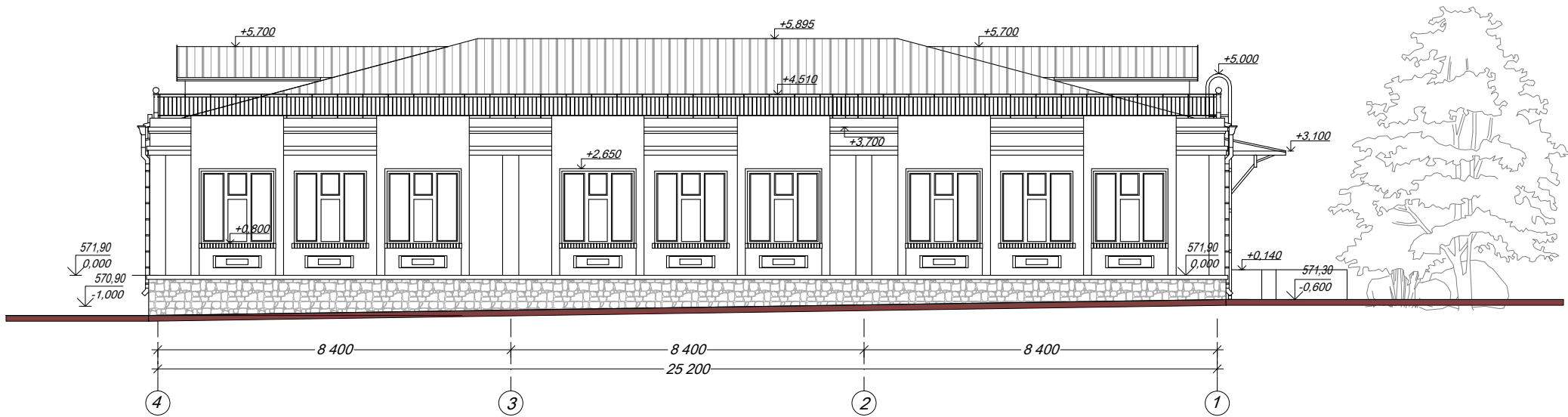


COMMENTS:

1. Decoration of walls- improve plastering with cement-lime solution, exterior acrylic water - resistant putty with decorative plastering
2. Potch part of foundation - Dark-blue-green colour seranite tyles, stair steps of the entrance porch - Gray blue colour
3. Windows and Doors blocks - Metall and plastic White colour
4. This sheet is considered from APS-7 and APS-10

						APS			
						Construction of 5 additional classrooms in secondary school N 47 of Safedob village, Jamoat Dashtijum, Shamsiddin Shohin district.			
dim.	Q-ty	Page	№ doc.	Signature	Data	Architectural-planing solution	Stage	Page	Pages
GIP		M. Shamsov					WD	6	
GAP		A. Pochoev							
						Fasade in axis 1-4 M 1:100	Private Buisnessman Aslam Pochoev License XT-23 №0000060		
Developed		F. Pochoev							
Checked		M. Shamsov							

FASADE in axis 4-1 M 1:100

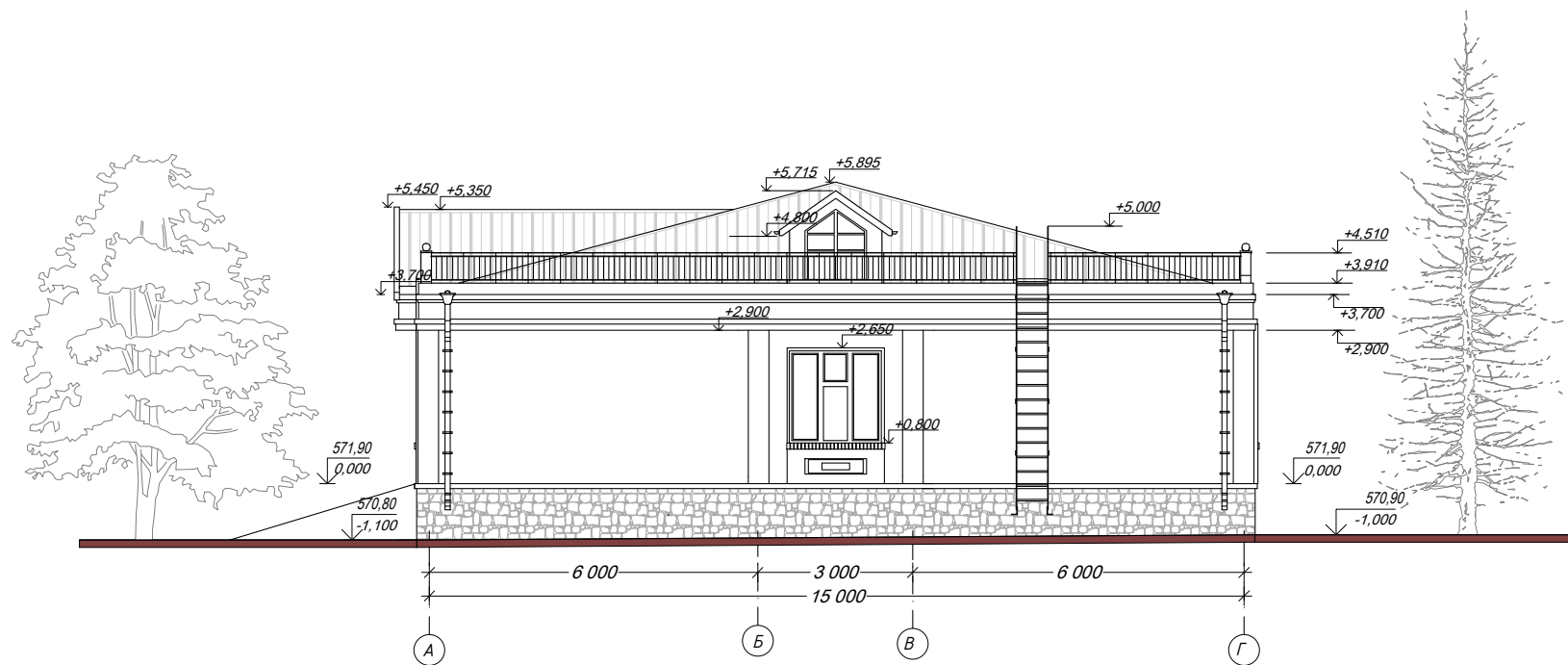


COMMENTS:

1. Decoration of walls- improve plastering with cement-lime solution, exterior acrylic water - resistant putty with decorative plastering
2. Patch part of foundation - Dark-blue-green colour seranite tyles, stair steps of the entrance porch - Gray blue colour
3. Windows and Doors blocks - Metall and plastic White colour
4. This sheet is considered from APS-7 and APS-10

						APS		
						Construction of 5 additional classrooms in secondary school N 47 of Safedob village, Jamoat Dashtijum, Shamsiddin Shohin district.		
dim.	Q-ty	Page	№ doc.	Signature	Data	Architectural-planing solution	Stage	Page
							WD	7
GIP		M. Shamsov				FASADE in axis 4-1 M 1:100	Private Buisnessman Aslam Pochoev License XT-23 №0000060	
GAP		A. Pochoev						
Developed		F. Pochoev						
Checked		M. Shamsov						

FASADE in axis A-Г M 1:100

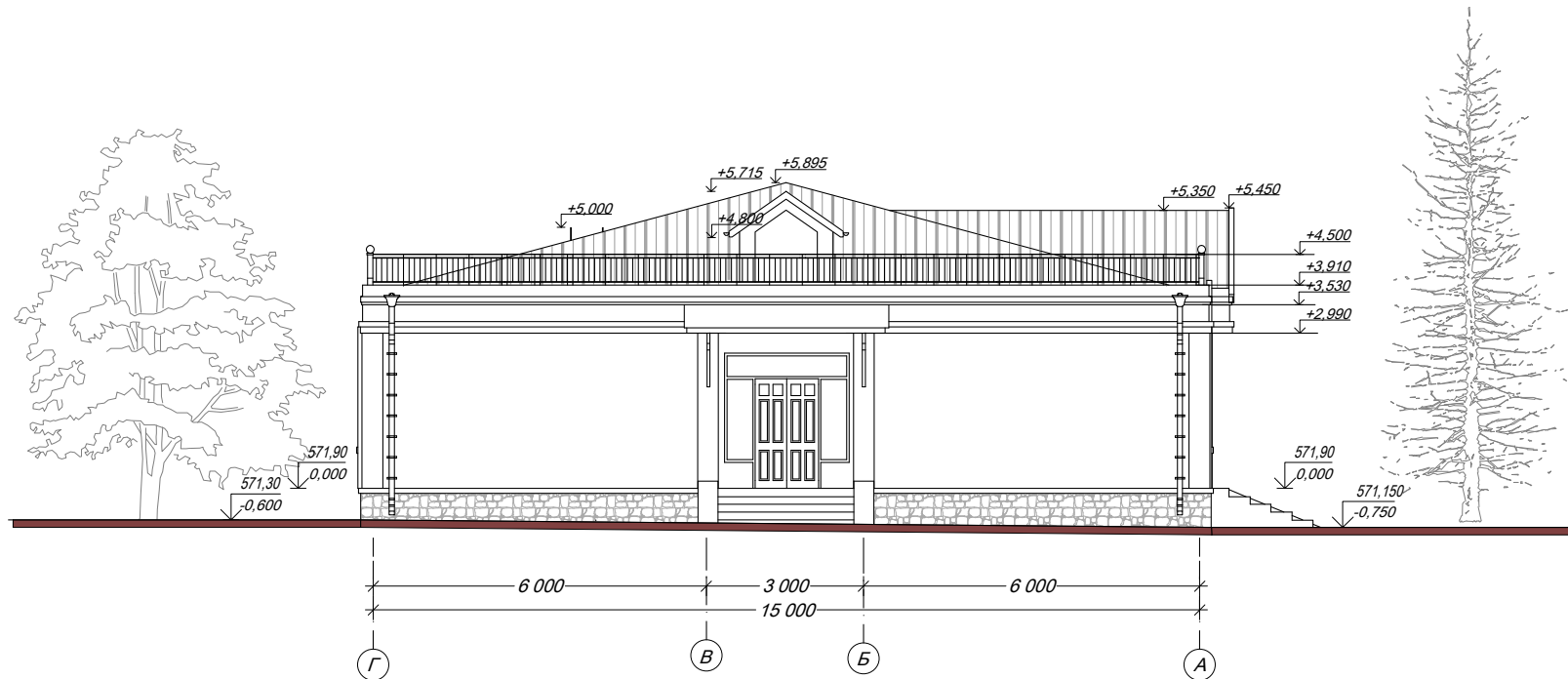


COMMENTS:

1. Decoration of walls- improve plastering with cement-lime solution, exterior acrylic water - resistant putty with decorative plastering
2. Patch part of foundation - Dark-blue-green colour seranite tyles, stair steps of the entrance porch - Gray blue colour
3. Windows and Doors blocks - Metall and plastic White colour
4. This sheet is considered from APS-7 and APS-10

						APS			
						Construction of 5 additional classrooms in secondary school N 47 of Safedob village, Jamoat Dashtijum, Shamsiddin Shohin district.			
dim.	Q-ty	Page	№ doc.	Signature	Data	Architectural-planing solution	Stage	Page	Pages
							WD	8	
GIP		M. Shamsov				FASADE in axis A-Г M 1:100	Private Buisnessman Aslam Pochoev License XT-23 №0000060		
GAP		A. Pochoev							
Developed		F. Pochoev							
Checked		M. Shamsov							

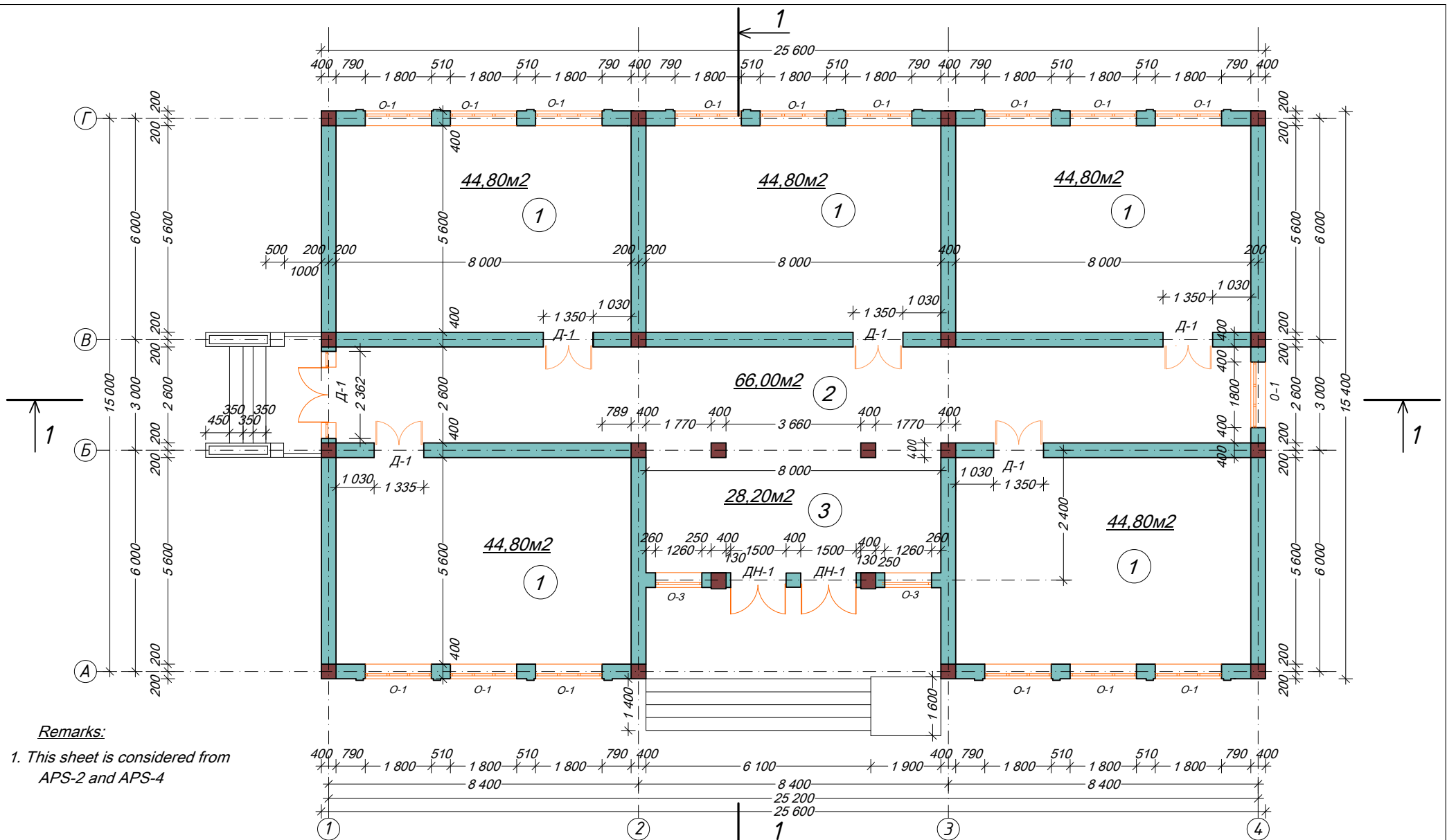
FASADE in axis Г-A M 1:100



COMMENTS:

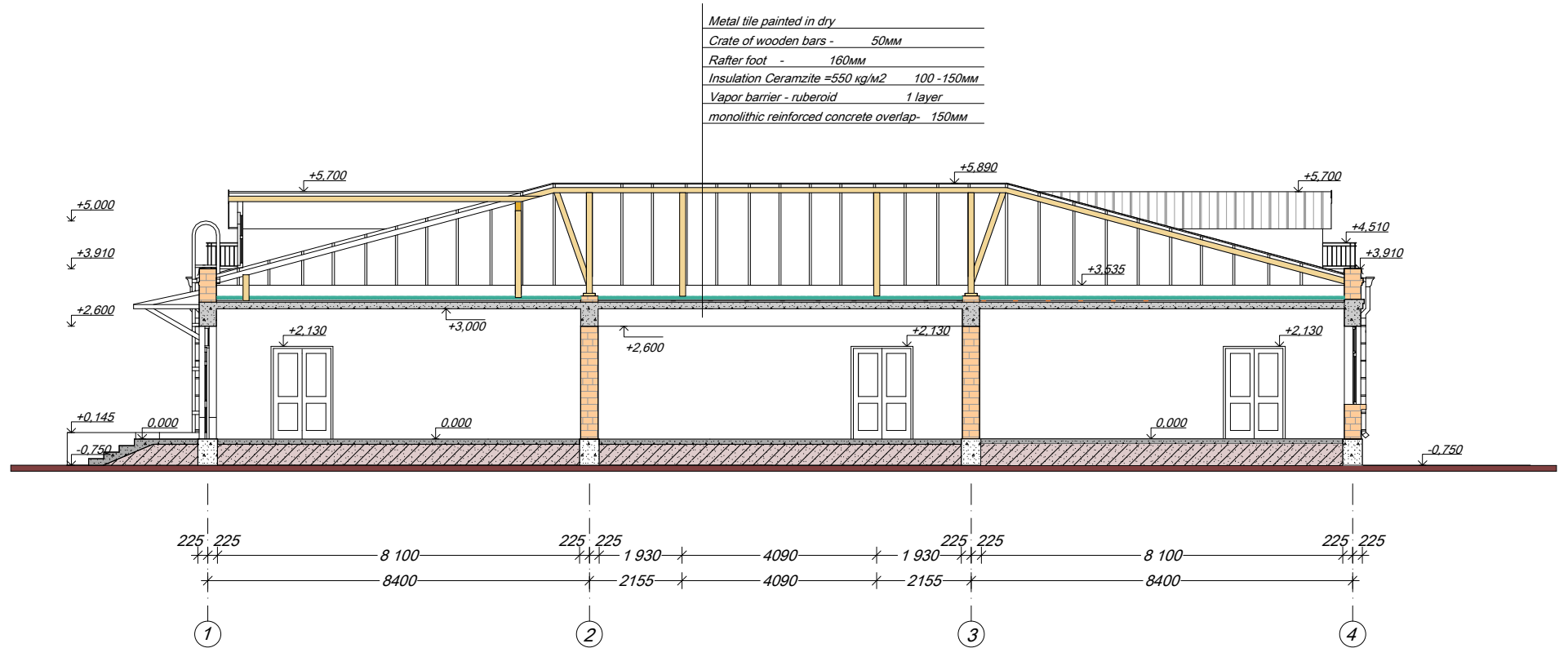
1. Decoration of walls- improve plastering with cement-lime solution, exterior acrylic water - resistant putty with decorative plastering
2. Potch part of foundation - Dark-blue-green colour seranite tyles, stair steps of the entrance porch - Gray blue colour
3. Windows and Doors blocks - Metall and plastic White colour
4. This sheet is considered from APS-7 and APS-10

						APS		
						Construction of 5 additional classrooms in secondary school N 47 of Safedob village, Jamoat Dashtijum, Shamsiddin Shohin district.		
dim.	Q-ty	Page	№ doc.	Signature	Data	Architectural-planing solution	Stage	Page
							WD	9
						FASADE in axis Г-A M 1:100	Private Buisnessman	
							Aslam Pochoev	
							License XT-23 №0000060	



						APS			
						Construction of 5 additional classrooms in secondary school N 47 of Safedob village, Jamoat Dashtijum, Shamsiddin Shohin district.			
dim.	Q-ty	Page	№ doc.	Signature	Data	Architectural-planing solution	Stage	Page	Pages
GIP		M. Shamsov					WD	10	
GAP		A. Pochoev				Ground floor plan M 1:100	Private Buisnessman Aslam Pochoev License XT-23 №0000060		
Developed		F. Pochoev							
Checked		M. Shamsov							

SECTION 1-1 M 1:100



1. This sheet is considered from APS-10 and APS-12

						APS			
						Construction of 5 additional classrooms in secondary school N 47 of Safedob village, Jamoat Dashtijum, Shamsiddin Shohin district.			
dim.	Q-ty	Page	№ doc.	Signature	Data	Architectural-planing solution	Stage	Page	Pages
	GIP	M. Shamsov					WD	11	
	GAP	A. Pochoev				SECTION 1-1 M 1:100	Private Buisnessman Aslam Pochoev License XT-23 №0000060		
	Developed	F. Pochoev							
	Checked	M. Shamsov							

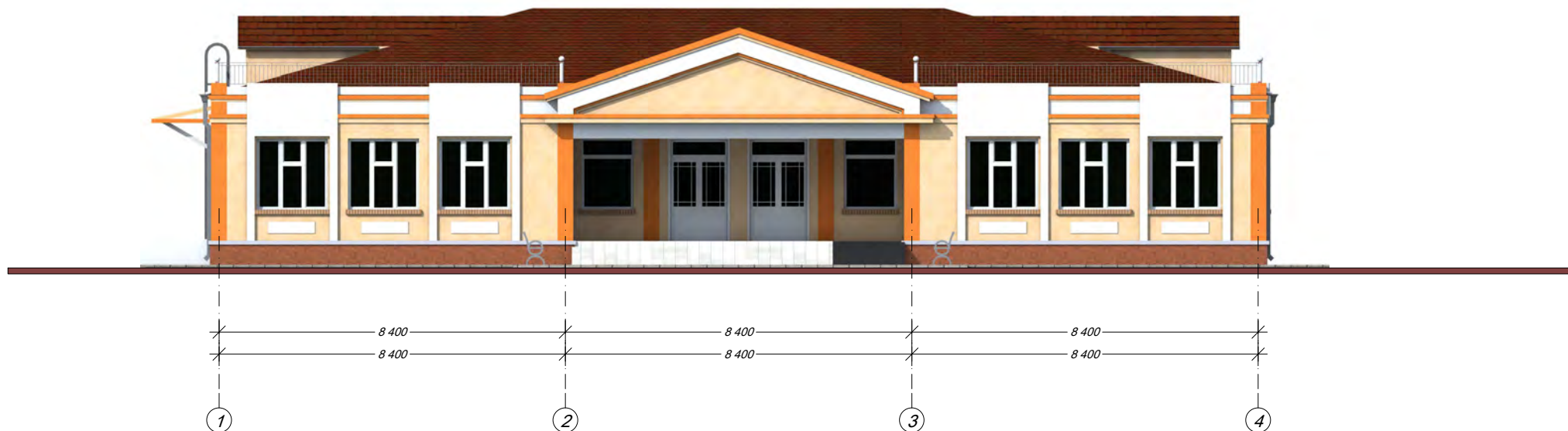
<i>Metal tile painted in dry</i>	
<i>Crate of wooden bars -</i>	<i>50mm</i>
<i>Rafter foot -</i>	<i>160mm</i>
<i>Insulation Ceramzite =550 kg/m²</i>	<i>100 -150mm</i>
<i>Vapor barrier - ruberoid</i>	<i>1 layer</i>
<i>monolithic reinforced concrete overlap-</i>	<i>150mm</i>



- | | | | | | | | | | | |
|-----------|------|------------|--------|-----------|------|--------------------------------|--|------------------------|------|-------|
| | | | | | | | APS | | | |
| | | | | | | | Construction of 5 additional classrooms in secondary school N 47 of Safedob village, Jamoat Dashtijum, Shamsiddin Shohin district. | | | |
| dim. | Q-ty | Page | № doc. | Signature | Data | | | | | |
| GIP | | M. Shamsov | | | | Architectural-planing solution | | Stage | Page | Pages |
| GAP | | A. Pochoev | | | | | | WD | 12 | |
| | | | | | | SECTION II-II M 1:100 | | Private Buisnessman | | |
| Developed | | F. Pochoev | | | | | | Aslam Pochoev | | |
| Checked | | M. Shamsov | | | | | | License XT-23 №0000060 | | |



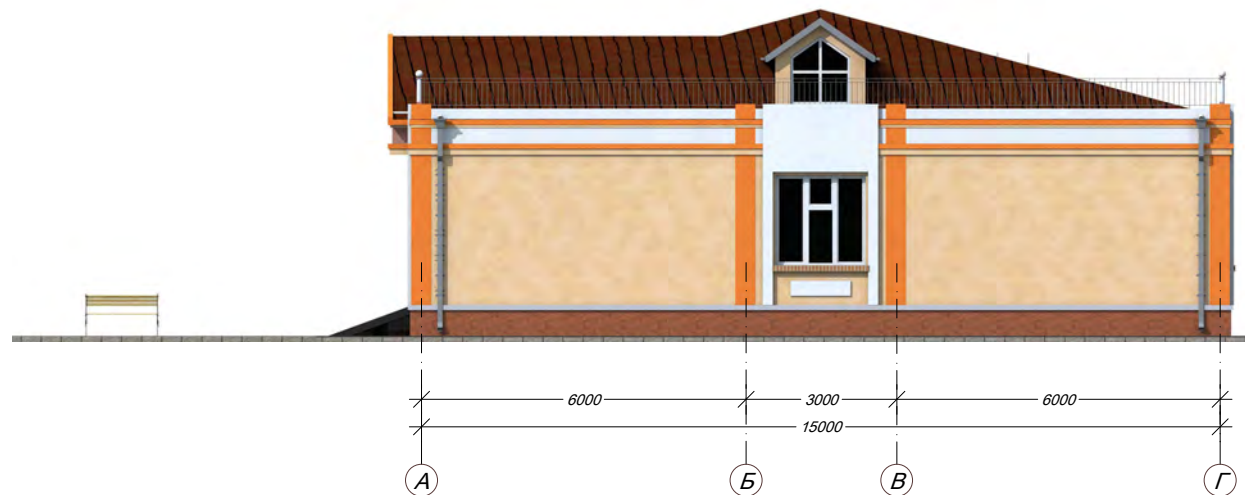
						APS			
						Construction of 5 additional classrooms in secondary school N 47 of Safedob village, Jamoat Dashtijum, Shamsiddin Shohin district.			
dim.	Q-ty	Page	№ doc.	Signature	Data	Architectural-planing solution	Stage	Page	Pages
							WD	13	
GIP		M. Shamsov				Fragment of the fasade / detail	Private Buisnessman Aslam Pochoev License XT-23 №0000060		
GAP		A. Pochoev							
Developed		F. Pochoev							
Checked		M. Shamsov							



COMMENTS:

1. Decoration of walls- improve plastering with cement-lime solution, exterior acrylic water - resistant putty with decorative plastering
2. Patch part of foundation - Dark-blue-green colour seranite tyles, stair steps of the entrance porch - Gray blue colour
3. Windows and Doors blocks - Metall and plastic White colour
4. This sheet is considered from APS-7 and APS-10

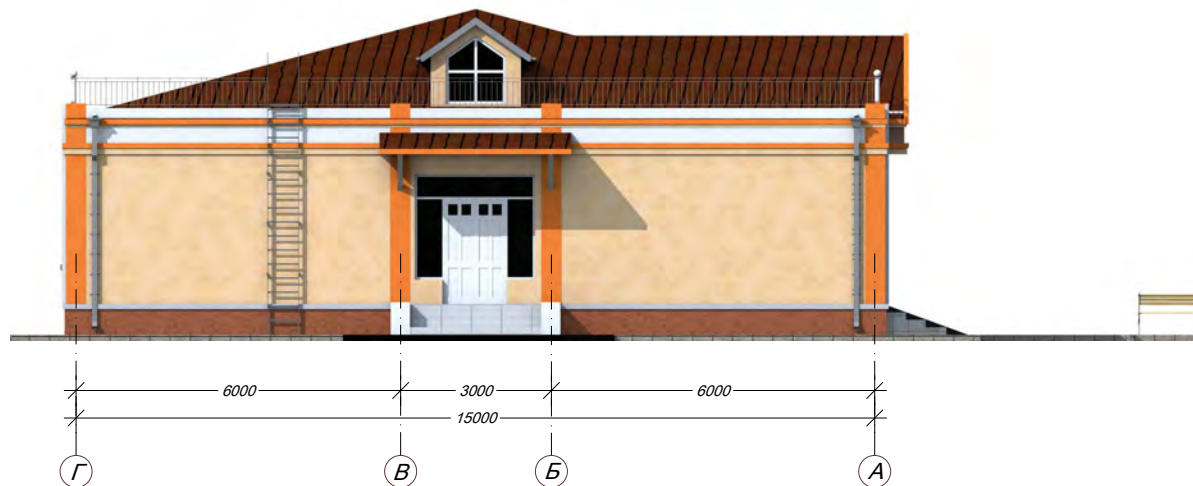
						APS			
						Construction of 5 additional classrooms in secondary school N 47 of Safedob village, Jamoat Dashtijum, Shamsiddin Shohin district.			
dim.	Q-ty	Page	№ doc.	Signature	Data	Architectural-planing solution	Stage	Page	Pages
GIP		M. Shamsov					WD	14	
GAP		A. Pochoev							
						FASADE in axis 1-4 (coloure solution)	Private Buisnessman Aslam Pochoev License XT-23 №0000060		
Developed		F. Pochoev							
Checked		M. Shamsov							



COMMENTS:

1. Decoration of walls- improve plastering with cement-lime solution, exterior acrylic water - resistant putty with decorative plastering
2. Potch part of foundation - Dark-blue-green colour seranite tyles, stair steps of the entrance porch - Gray blue colour
3. Windows and Doors blocks - Metall and plastic White colour
4. This sheet is considered from APS-7 and APS-10

						APS				
						Construction of 5 additional classrooms in secondary school N 47 of Safedob village,Jamoat Dashtijum, Shamsiddin Shohin district.				
dim.	Q-ty	Page	№ doc.	Signature	Data					
GIP		M. Shamsov				Architectural-planing solution		Stage	Page	Pages
GAP		A. Pochoev						WD	15	
						FASADE in axis A - Γ (coloure solution)		Private Buisnessman Aslam Pochoev License XT-23 №0000060		
Developed		F. Pochoev								
Checked		M. Shamsov								

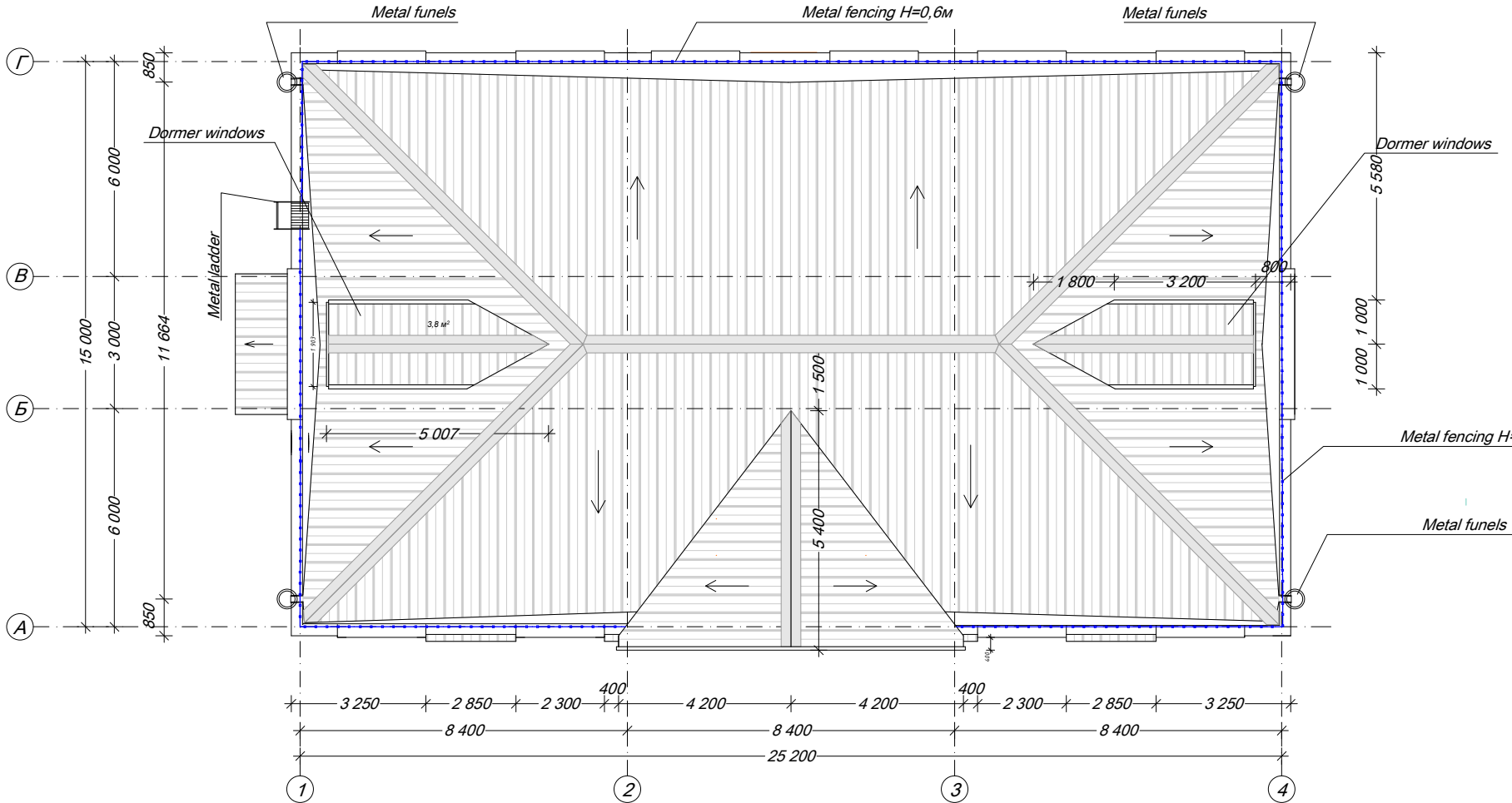


COMMENTS:

1. Decoration of walls- improve plastering with cement-lime solution, exterior acrylic water - resistant putty with decorative plastering
2. Potch part of foundation - Dark-blue-green colour seranite tyles, stair steps of the entrance porch - Gray blue colour
3. Windows and Doors blocks - Metall and plastic White colour
4. This sheet is considered from APS-7 and APS-10

						APS				
						Construction of 5 additional classrooms in secondary school N 47 of Safedob village, Jamoat Dashtijum, Shamsiddin Shonin district.				
dim.	Q-ty	Page	№ doc.	Signature	Data					
						Architectural-planing solution		Stage	Page	Pages
GIP		M. Shamsov			WD			16		
GAP		A. Pochoev				FASADE in axis F-A (coloure solution)		Private Buisnessman Aslam Pochoev License XT-23 №0000060		
Developed		F. Pochoev								
Checked		M. Shamsov								

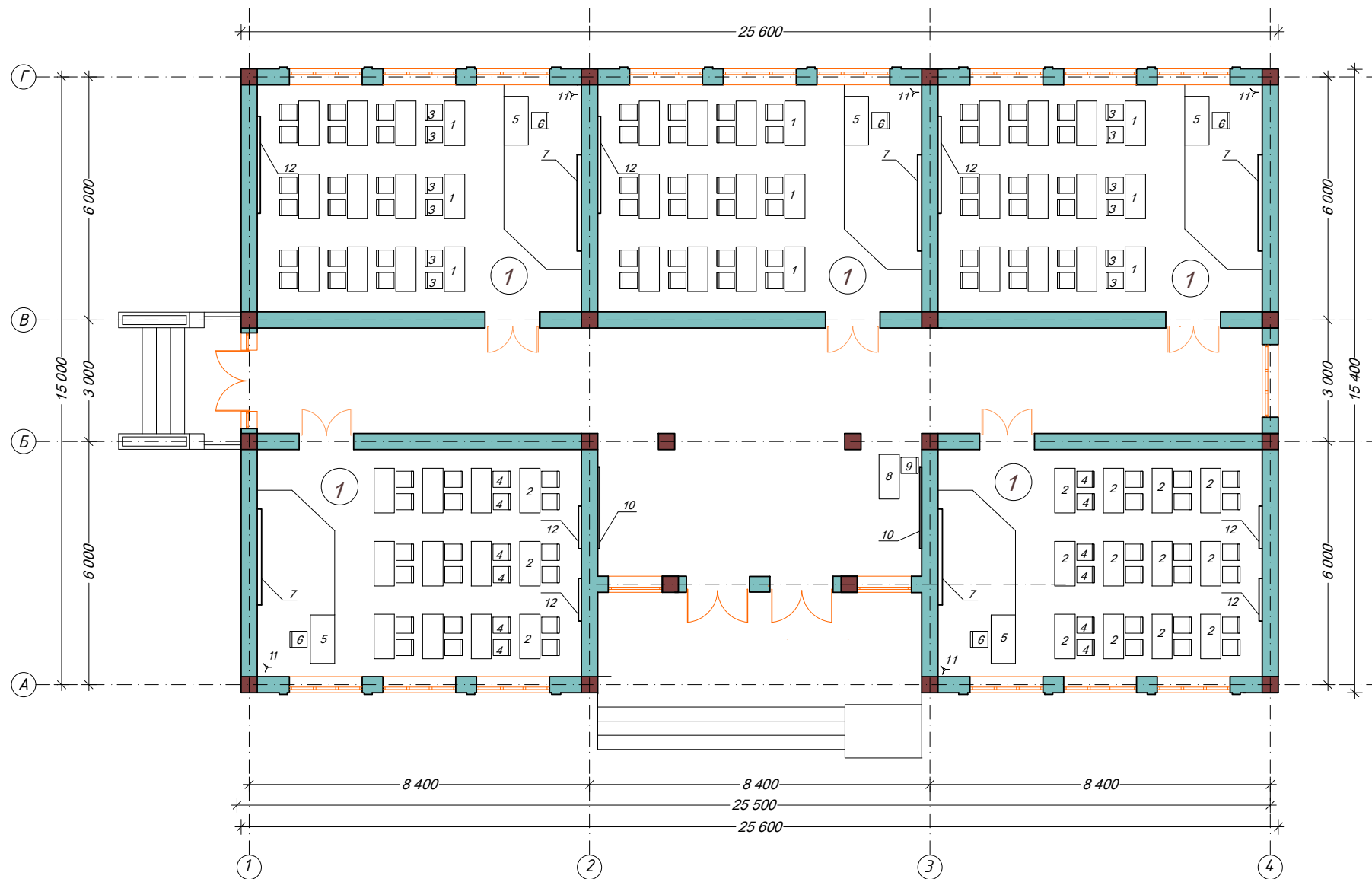
Roof Plan



NOTES:

1. This sheet is considered from APS-7 and APS-10

						APS			
						Construction of 5 additional classrooms in secondary school N 47 of Safedob village, Jamoat Dashtijum, Shamsiddin Shonin district.			
dim.	Q-ty	Page	№ doc.	Signature	Data				
GIP		M. Shamsov				Architectural-planing solution	Stage	Page	Pages
GAP		A. Pochoev					WD	18	
						Roof Plan	Private Buisnessman Aslam Pochoev License XT-23 №0000060		
Developed		F. Pochoev							
Checked		M. Shamsov							



Explication of the premises

No№	Name	Remarks
1	Classrooms	224,00m ²
2	Coridor	66,00m ²
3	Foye	28,20m ²
Total:		318,20m ²

Remarks:

1. This sheet is considered from APS-22

						APS			
						Construction of 5 additional classrooms in secondary school N 47 of Safedob village, Jamoat Dashtijum, Shamsiddin Shohin district.			
dim.	Q-ty	Page	№ doc.	Signature	Data	Architectural-planing solution	Stage	Page	Pages
GIP	M. Shamsov						WD	21	
GAP	A. Pochoev					Plan of the technological equipment	Private Buisnessman		
Developed	F. Pochoev						Aslam Pochoev		
Checked	M. Shamsov						License XT-23 №0000060		

Specification of furniture and equipment

№№	Name	Brand	Q-ty.	Dimensions length, width and height	Weight			Plant manufacturer
1	2	3	4	5	6	7	8	9
1	pupillary desk	GOST 11015-71	24	1200x450x540	—	—	—	Glavbelprom Moskow
2	— — — — —	— — — — —	36	1200x450x640	—	—	—	— — — — —
3	Pupillary chair	OS-2-678	48	430x400x550	—	—	—	—
4	— — — — —	— — — — —	72	430x400x650	—	—	—	—
5	Teacher's desk	— — — — —	5	1200x600x770	—	—	—	—
6	Teacher's chair	— — — — —	5	480x500x760	—	—	—	—
7	Blackboard	— — — — —	5	2400x70x2200	—	—	—	—
8	Library table	CCh-01	1	1050x500x730	—	—	—	Private manufacturer
9	Chair	— — — — —	1	480x500x760	—	—	—	Glavsnab
10	Wall ads		2		—	—	—	
11	Вешелка стоячая		5		—	—	—	—
12	Hanger standing		5		—	—	—	—
13								

Comments:

1. This sheet is considered from APS-21

						APS				
						Construction of 5 additional classrooms in secondary school N 47 of Safedob village, Jamoat Dashtijum, Shamsiddin Shohin district.				
dim.	Q-ty	Page	№ doc.	Signature	Data					
GIP		M. Shamsov				Architectural-planing solution		Stage	Page	Pages
GAP		A. Pochoev						WD	22	
						Specification of equipments		Private Buisnessman Aslam Pochoev License XT-23 №0000060		
Developed		F. Pochoev								
Checked		M. Shamsov								