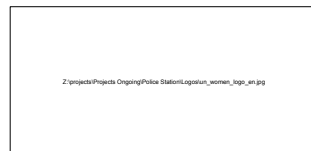


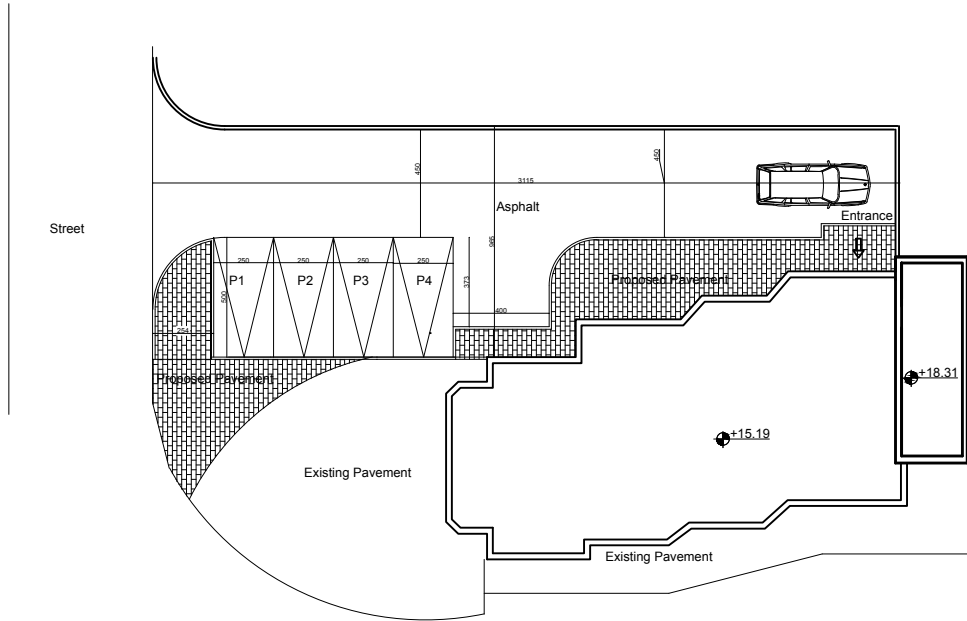
CLIENT:

Palestinian Authority  
Ministry Of Interior

PROJECT NAME:

Family and Juvenile  
Protection Unit  
(FJPU)  
Ramallah





## Notes

- All Dimensions are in cm.

date of revision	initials	revision details



### PROJECT NAME

Family and Juvenile  
protection unit  
(FJPU)  
Ramallah

### PRODUCED BY:

### DESIGNED BY:



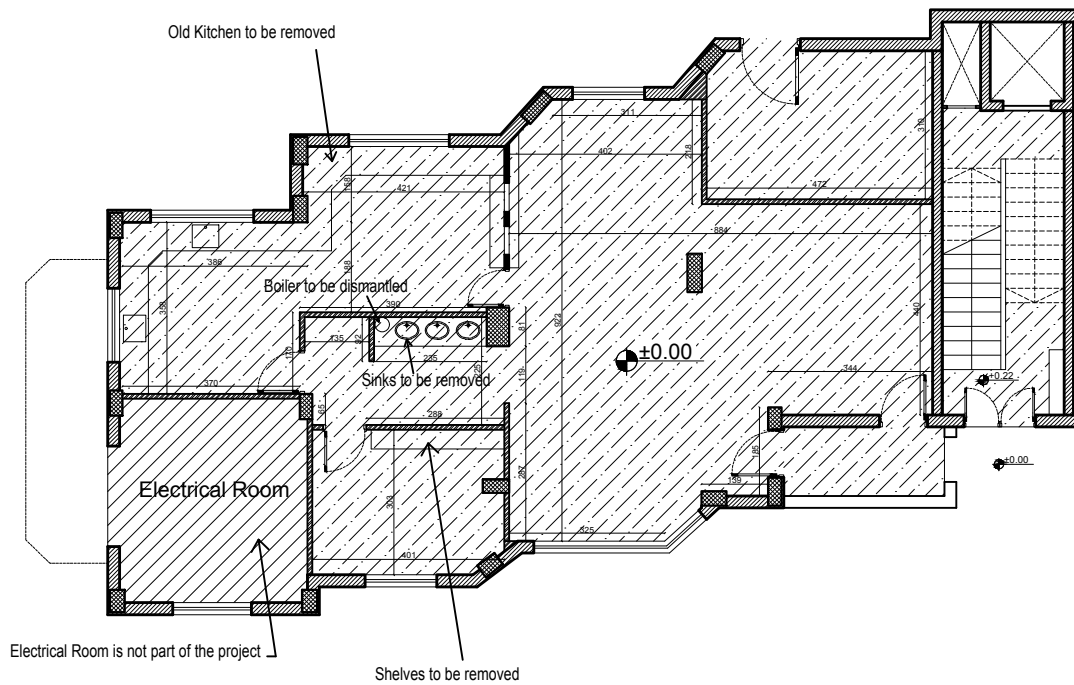
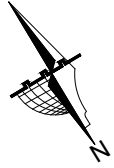
Form Architects and Engineers

### DRAWING TITLE:

Site Plan  
Proposed Layout


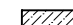

SCALE	SHEET NUMBER
Sep,2015	A0





## Notes

- All Dimensions are in cm.

-  Hollow Blocks to be demolished
-  Floor tiles to be removed at the internal floor
-  Gypsum Walls to be demolished

\* All Waste materials to be removed to approved dump location.

\* All Doors and windows to be dismantled and stored as instructed by the engineer.

\* the site should be prepared for the new installations

date of revision	initials	revision details



PROJECT NAME

Family and Juvenile  
protection unit  
(FJPU)  
Ramallah

PRODUCED BY:

DESIGNED BY:

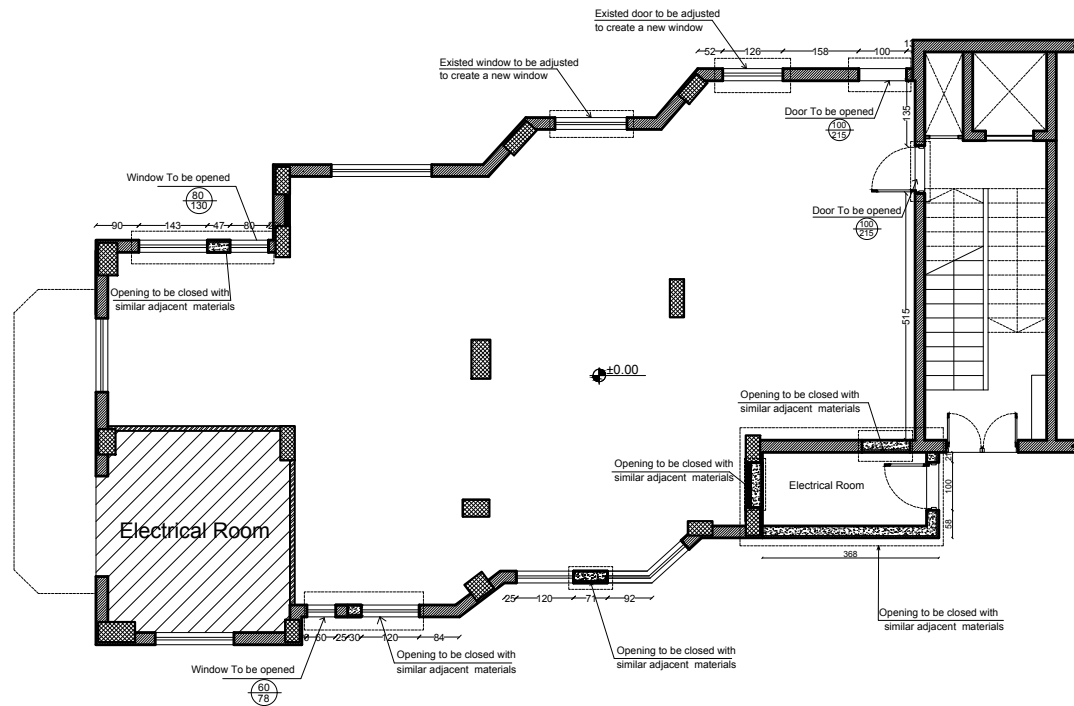
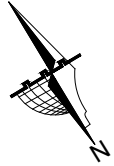


Form Architects and Engineers

DRAWING TITLE:

Demolish Plan  
Ground Floor

DATE	SCALE	SHEET NUMBER
Sep.,2015	1-100	A002



## Notes

- All Dimensions are in cm.

	Existing Walls
	Hollow Blocks
	Gypsum Walls
	Concrete
	Stone
	Reinforced Concrete

date of revision	initials	revision details



PROJECT NAME

Family and Juvenile  
protection unit  
(FJPU)  
Ramallah

PRODUCED BY:

DESIGNED BY:

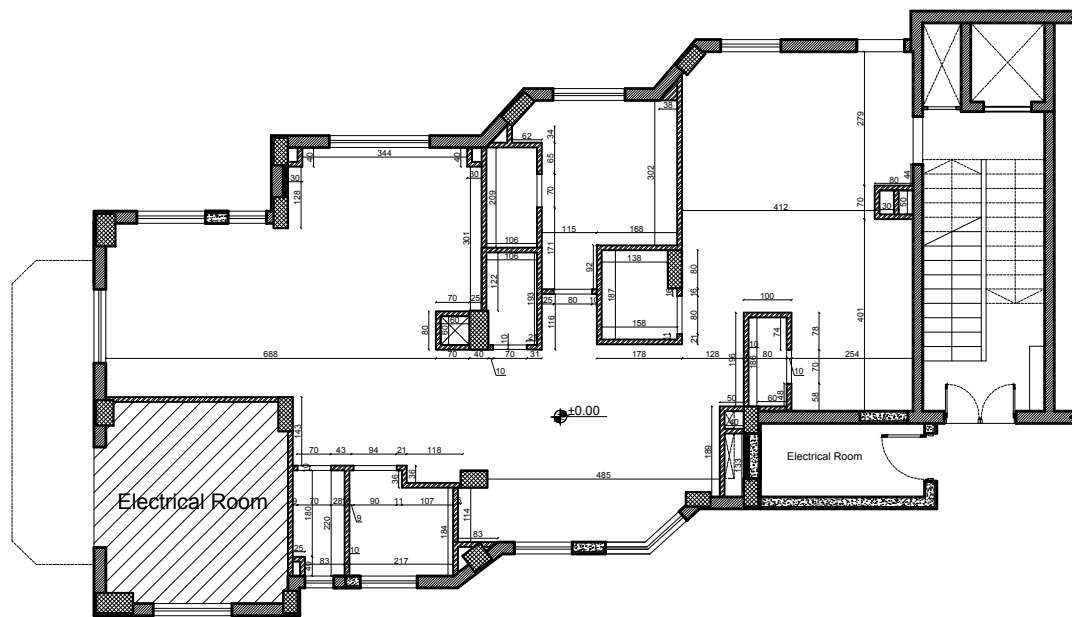
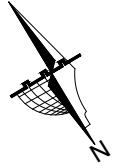


Form Architects and Engineers

DRAWING TITLE:

Alteration Plan  
Ground Floor

DATE	SCALE	SHEET NUMBER
Sep.,2015	1-100	A003



## Notes

- All Dimensions are in cm.

- Existing Walls
- Hollow Blocks
- Gypsum Walls
- Concrete
- Stone
- Reinforced Concrete

date of revision	initials	revision details



PROJECT NAME

Family and Juvenile  
protection unit  
(FJPU)  
Ramallah

PRODUCED BY:

DESIGNED BY:

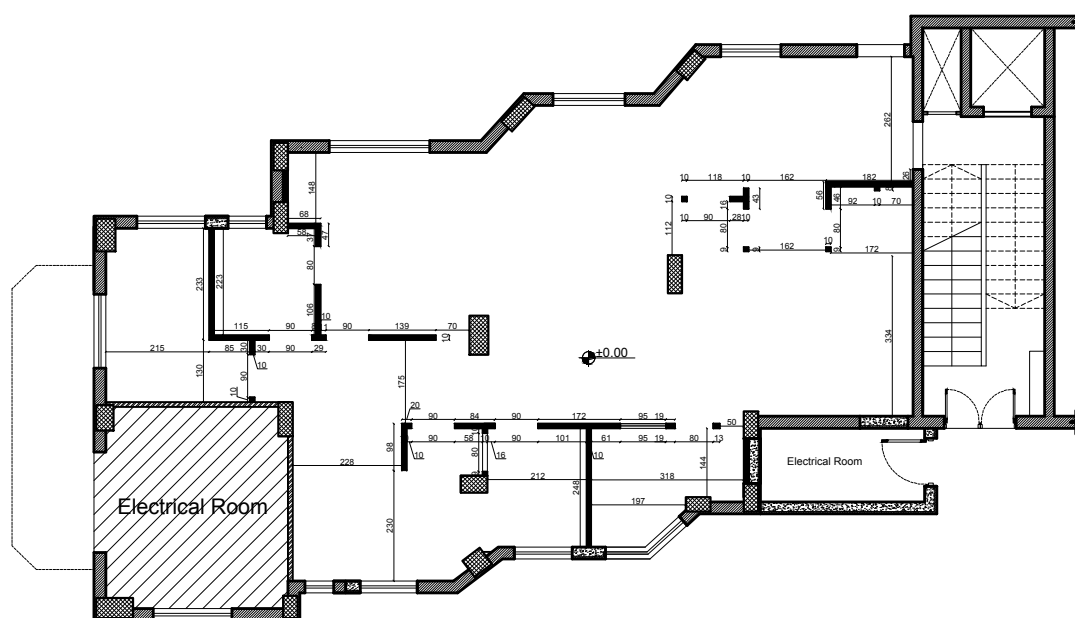


Form Architects and Engineers







DRAWING TITLE:

Hollow Block Walls  
Ground Floor

DATE	SCALE	SHEET NUMBER
Sep.,2015	1-100	A004



- All Dimensions are in cm.

-  Existing Walls  
 Hollow Blocks  
 Gypsum Walls  
 Concrete  
 Stone  
 Reinforced Concrete

[illegible]

	PROJECT NAME
--	--------------

Family and Juvenile  
protection unit  
(FJPU)  
Ramallah

PRODUCED BY:	
--------------	--

DESIGNED BY:

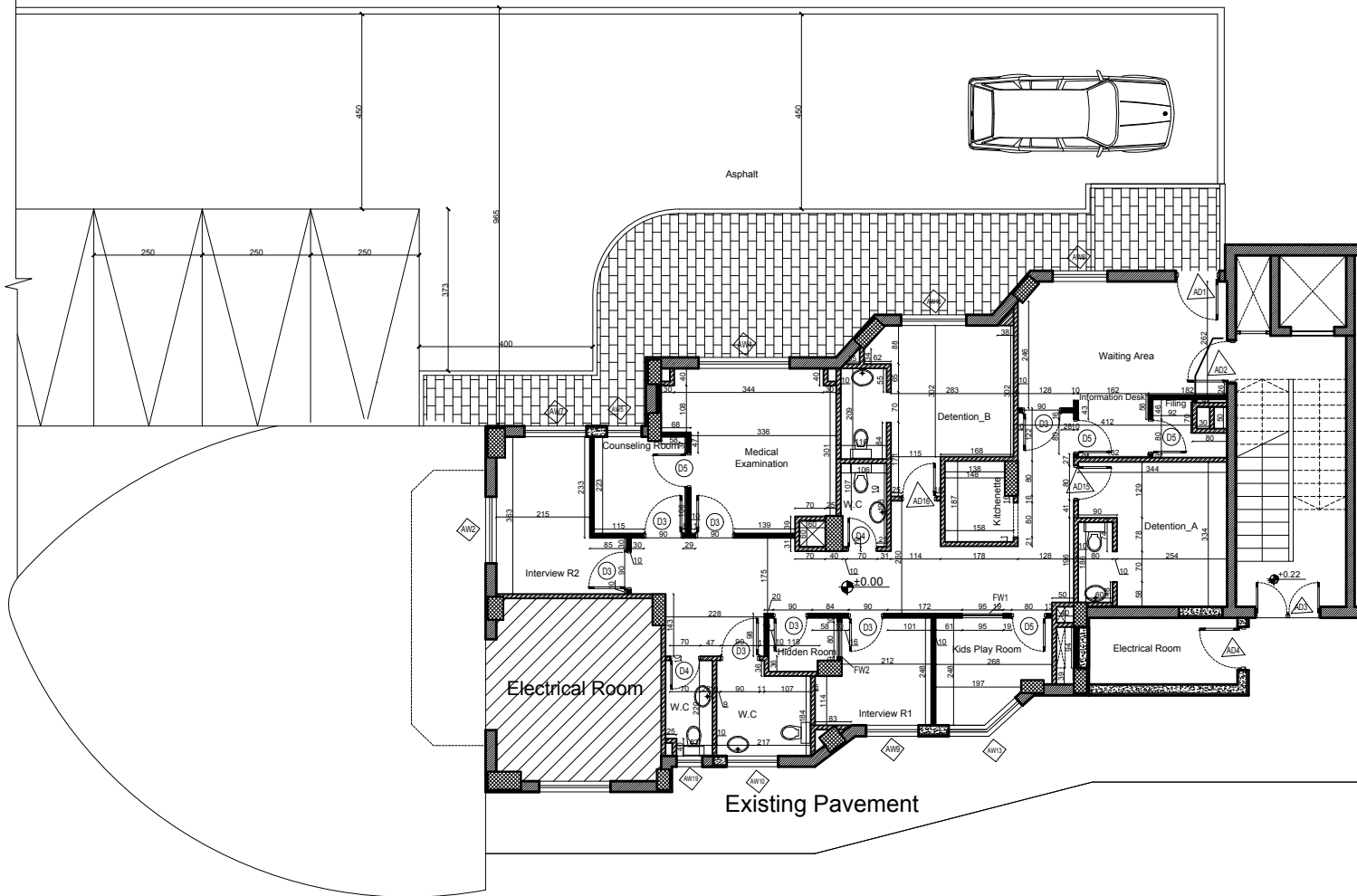
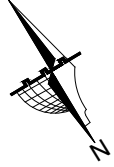


Form Architects and Engineers

DRAWING TITLE:

Gypsum Partitions  
Ground Floor

DATE	SCALE	SHEET NUMBER
Sep.,2015	1-100	A005



## Notes

- All Dimensions are in cm.

- Existing Walls
- Hollow Blocks
- Gypsum Walls
- Concrete
- Stone
- Reinforced Concrete

date of revision	initials	revision details



PROJECT NAME

Family and Juvenile  
protection unit  
(FJPU)  
Ramallah

PRODUCED BY:

DESIGNED BY:



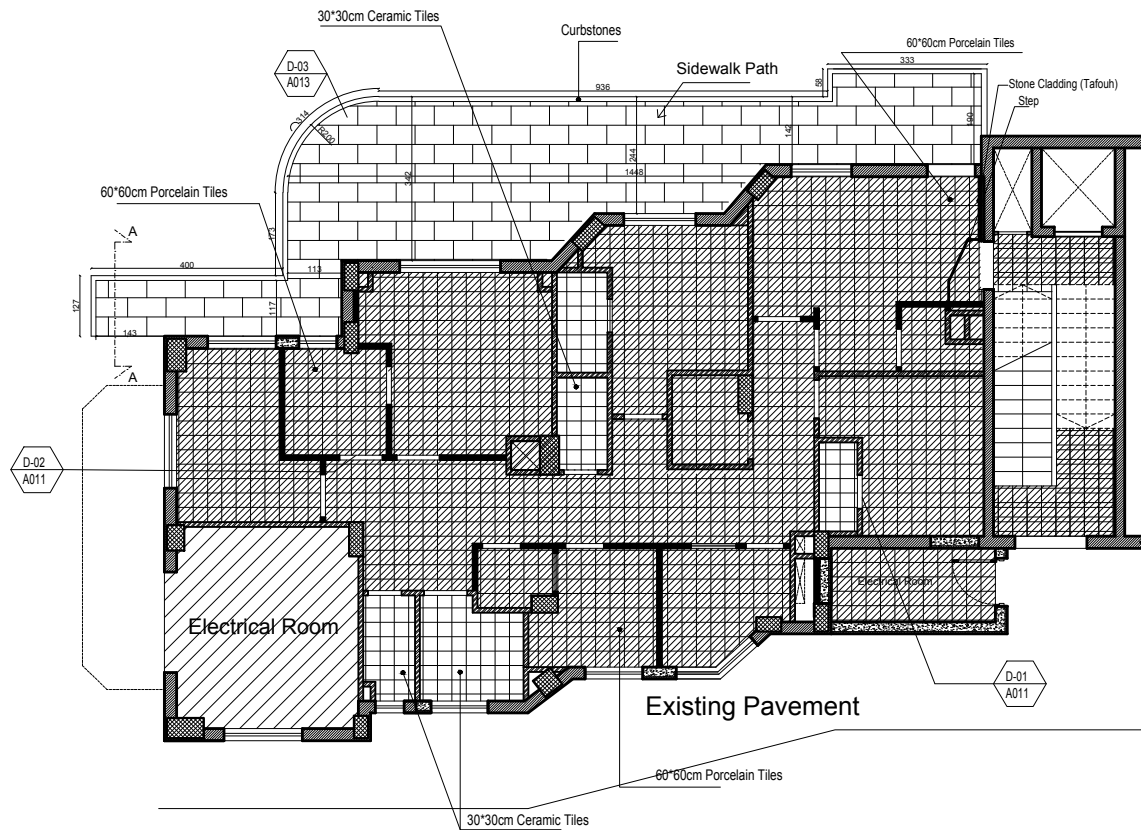
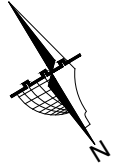
Form Architects and Engineers

DRAWING TITLE:

Dimension Plan  
Ground Floor

DATE	SCALE	SHEET NUMBER
Sep.,2015	1-100	A006





## Notes

- All Dimensions are in cm.

- Existing Walls
- Hollow Blocks
- Gypsum Walls
- Concrete
- Stone
- Reinforced Concrete
- Terrazzo Tiles
- Ceramic Tiles

date of revision	initials	revision details



PROJECT NAME

Family and Juvenile  
protection unit  
(FJPU)  
Ramallah

PRODUCED BY:

DESIGNED BY:

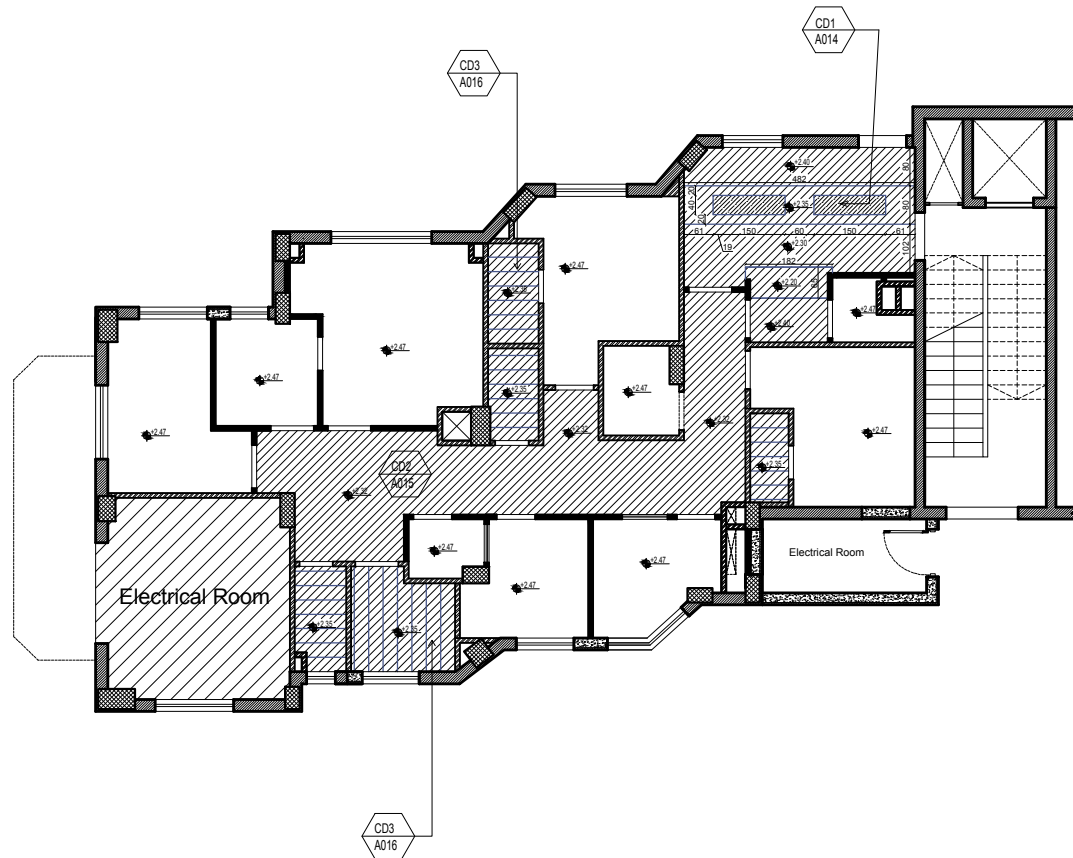
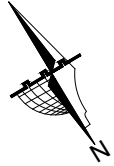


Form Architects and Engineers

DRAWING TITLE:

Tiling Plan  
Ground Floor

DATE	SCALE	SHEET NUMBER
Sep.,2015	1-100	A007



## Notes

- All Dimensions are in cm.

- Existing Walls
- Hollow Blocks
- Gypsum Walls
- Concrete
- Stone
- Reinforced Concrete
- False Ceiling

date of revision	initials	revision details



PROJECT NAME

Family and Juvenile  
protection unit  
(FJPU)  
Ramallah

PRODUCED BY:

DESIGNED BY:

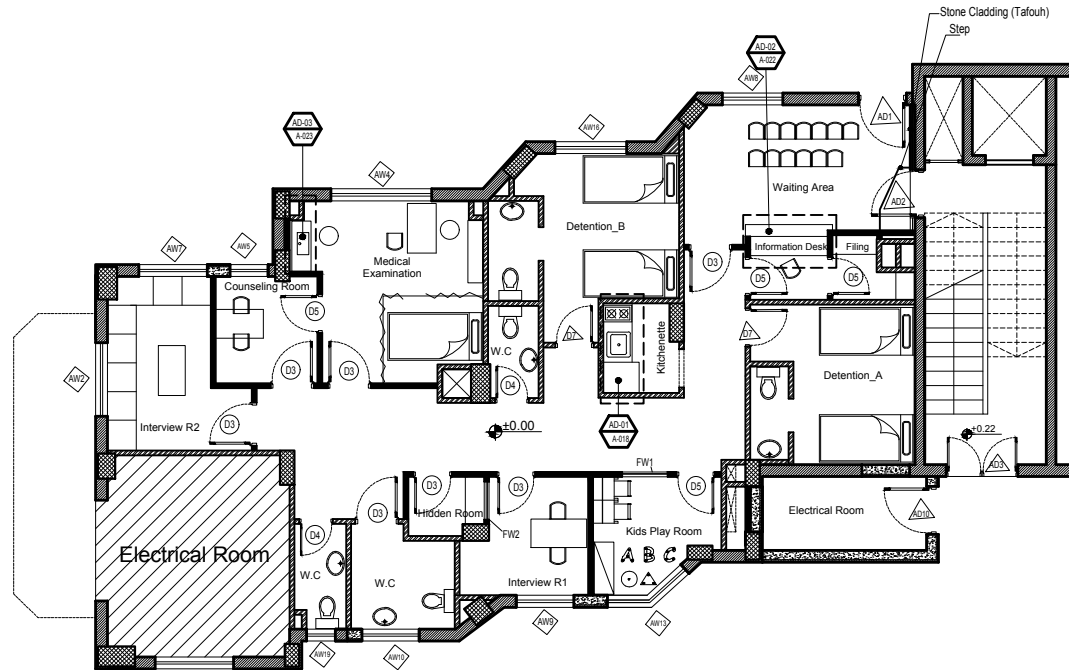
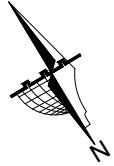


Form Architects and Engineers

DRAWING TITLE:

False Ceiling Plan  
Ground Floor

DATE	SCALE	SHEET NUMBER
Sep.,2015	1-100	A008



## Notes

- All Dimensions are in cm.

- Existing Walls
- Hollow Blocks
- Gypsum Walls
- Concrete
- Stone
- Reinforced Concrete

date of revision	initials	revision details



PROJECT NAME

Family and Juvenile  
protection unit  
(FJPU)  
Ramallah

PRODUCED BY:

DESIGNED BY:



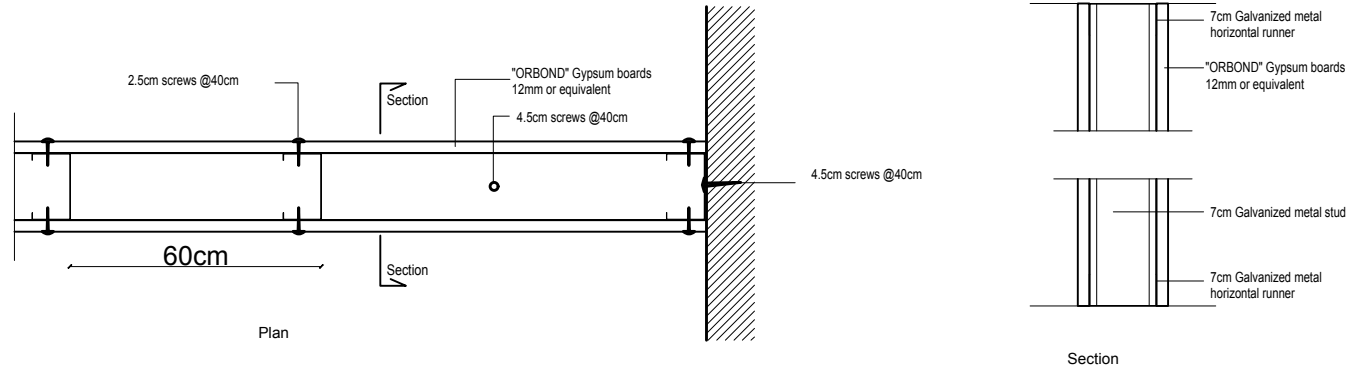
Form Architects and Engineers

DRAWING TITLE:

Furniture Layout  
Ground Floor




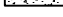


DATE	SCALE	SHEET NUMBER
Sep.,2015	1-100	A009

Detail -1  
Typical Details for Gypsum Board Partitions



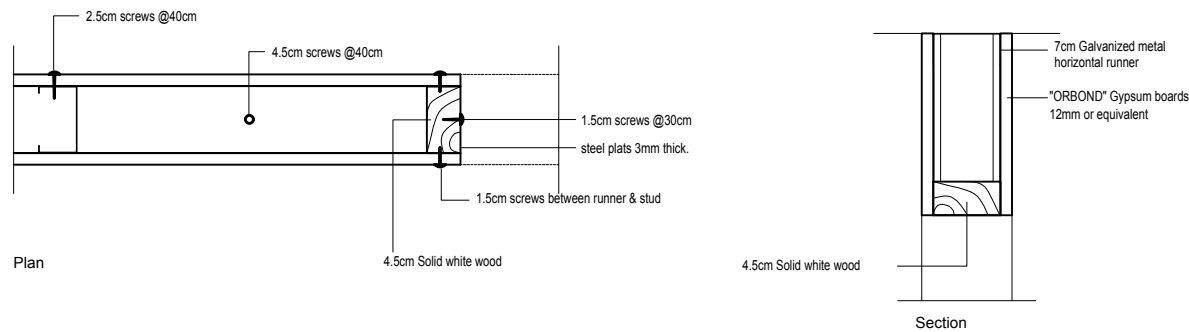
## Notes

- All Dimensions are in cm.

-  Existing Walls
-  Hollow Blocks
-  Gypsum Walls
-  Concrete
-  Stone
-  Reinforced Concrete

date of revision	initials	revision details

Detail -2  
Typical Details for Gypsum Board Partitions @ Wooden Doors or Windows



PROJECT NAME

Family and Juvenile  
protection unit  
(FJPU)  
Ramallah

PRODUCED BY:

DESIGNED BY:

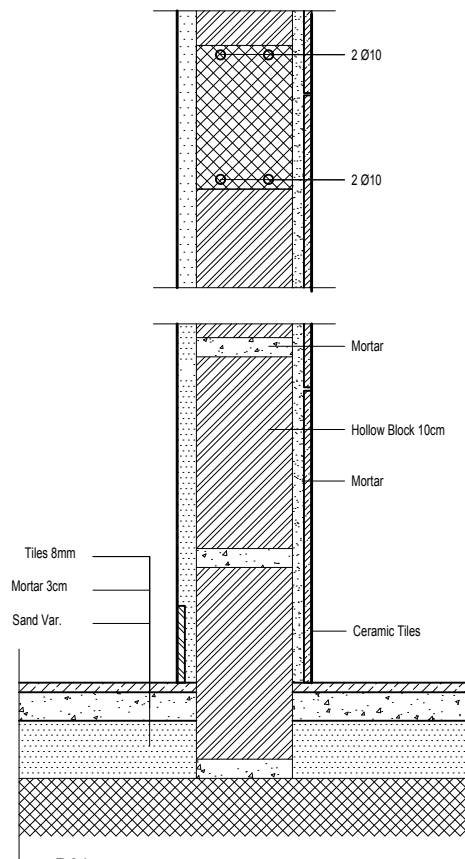


Form Architects and Engineers

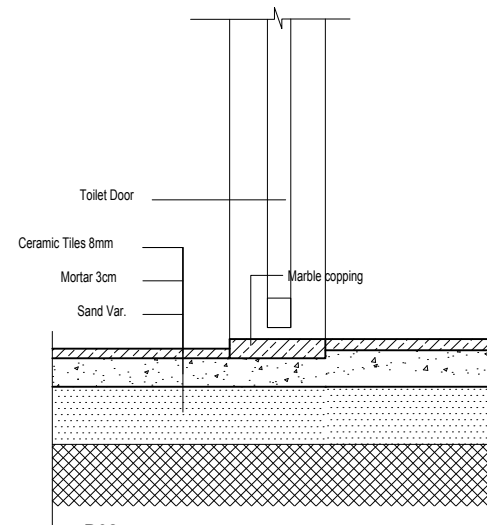
DRAWING TITLE:

Gypsum Partitions Details  
Ground Floor

DATE	SCALE	SHEET NUMBER
Sep.,2015		A010









D01  
(Hollow Block Detail)



D02  
(Tiles Detail )

## Notes

- All Dimensions are in cm.

-  Existing Walls
-  Hollow Blocks
-  Gypsum Walls
-  Concrete
-  Stone
-  Reinforced Concrete

date of revision	initials	revision details

PROJECT NAME

Family and Juvenile  
protection unit  
(FJPU)  
Ramallah

PRODUCED BY:

DESIGNED BY:



Form Architects and Engineers

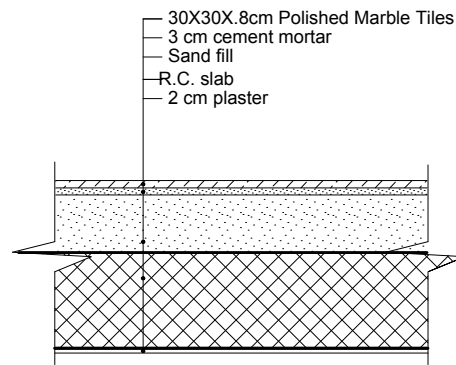
DRAWING TITLE:

Tiling Details  
Ground Floor

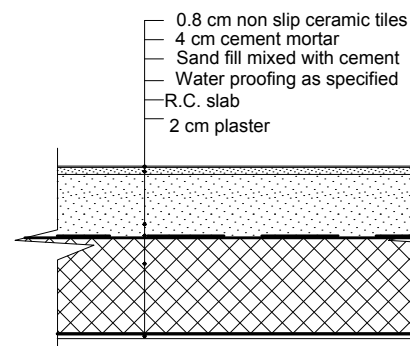
DATE	SCALE	SHEET NUMBER
Sep.,2015	----	A011

## Notes

- All Dimensions are in cm.



1 Typical Detail for Porcelain Tiling Floor Finish  
All Scale 1/20



3 Typical Detail for Ceramic Tiling Floor Finish at Baths (Wet areas)  
All Scale 1/20

date of revision	initials	revision details

PROJECT NAME

Family and Juvenile  
protection unit  
(FJPU)  
Ramallah

PRODUCED BY:

DESIGNED BY:



Form Architects and Engineers

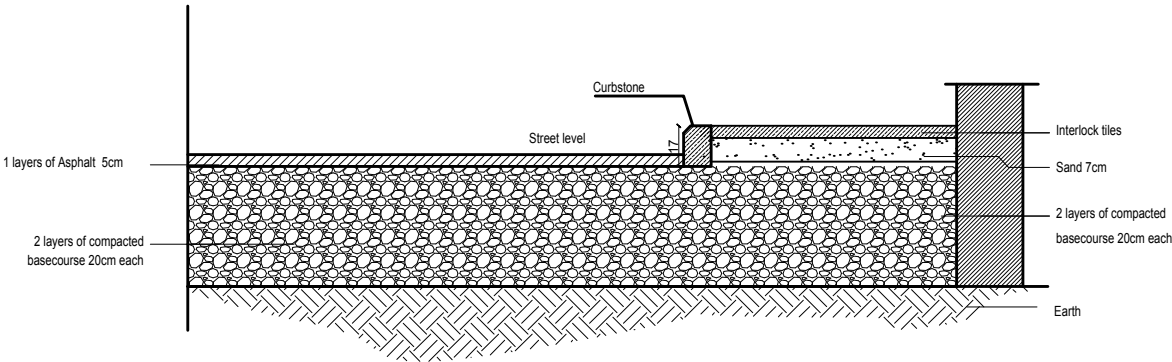
DRAWING TITLE:

Tiling Details  
Ground Plan

DATE	SCALE	SHEET NUMBER
Sep.,2015	1-20	A 012

Section A-A (Sidewalk Detail)

Scale 1:20



Notes

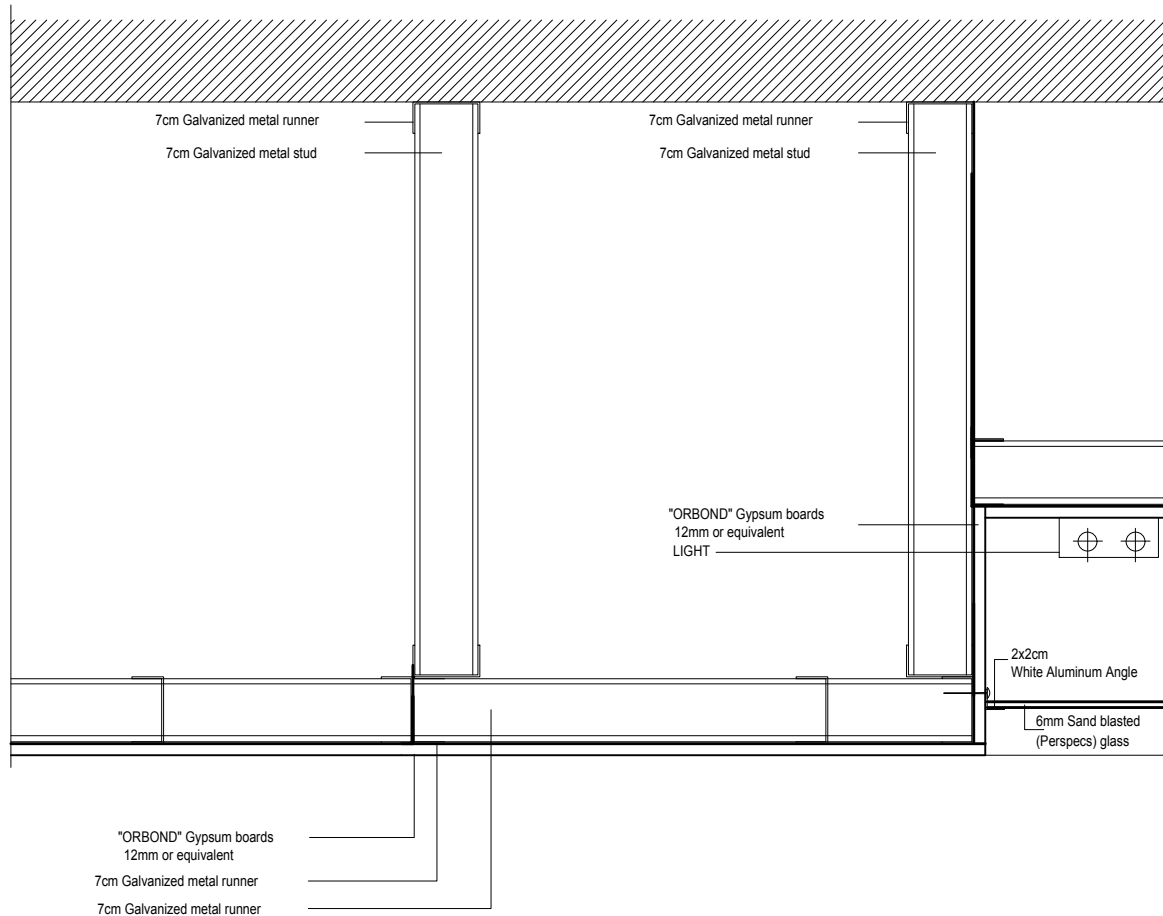
- All Dimensions are in cm.

- Existing Walls
- Hollow Blocks
- Gypsum Walls
- Concrete
- Stone
- Reinforced Concrete
- False Ceiling

date of revision	initials	revision details









PROJECT NAME		
Family and Juvenile protection unit (FJPU) Ramallah		
PRODUCED BY:		
DESIGNED BY:		
FORM Architects and Engineers		
DRAWING TITLE:		
Tiling Details Ground Floor		
DATE	SCALE	SHEET NUMBER
Sep.,2015	1-20	A013



## Notes

- All Dimensions are in cm.

-  Existing Walls
-  Hollow Blocks
-  Gypsum Walls
-  Concrete
-  Stone
-  Reinforced Concrete

date of revision	initials	revision details

PROJECT NAME

Family and Juvenile  
protection unit  
(FJPU)  
Ramallah

PRODUCED BY:

DESIGNED BY:



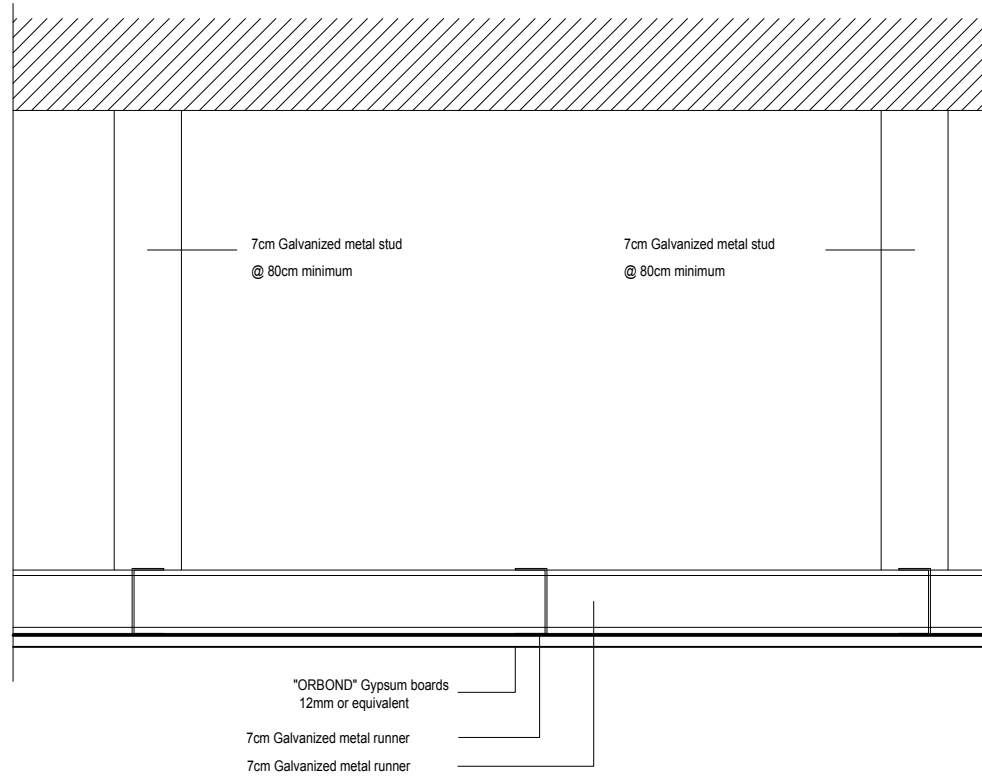
Form Architects and Engineers

DRAWING TITLE:

CD1  
Ground Floor

DATE	SCALE	SHEET NUMBER
Sep.,2015		A014





## Notes

- All Dimensions are in cm.

	Existing Walls
	Hollow Blocks
	Gypsum Walls
	Concrete
	Stone
	Reinforced Concrete

date of revision	initials	revision details

PROJECT NAME

Family and Juvenile  
protection unit  
(FJPU)  
Ramallah

PRODUCED BY:

DESIGNED BY:

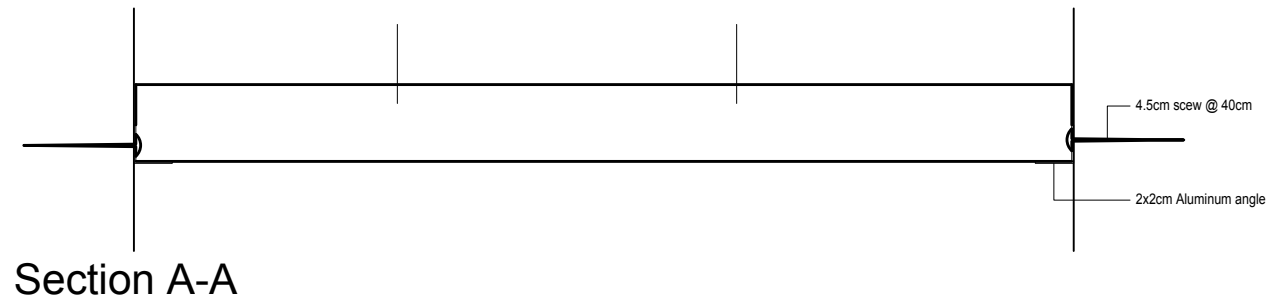
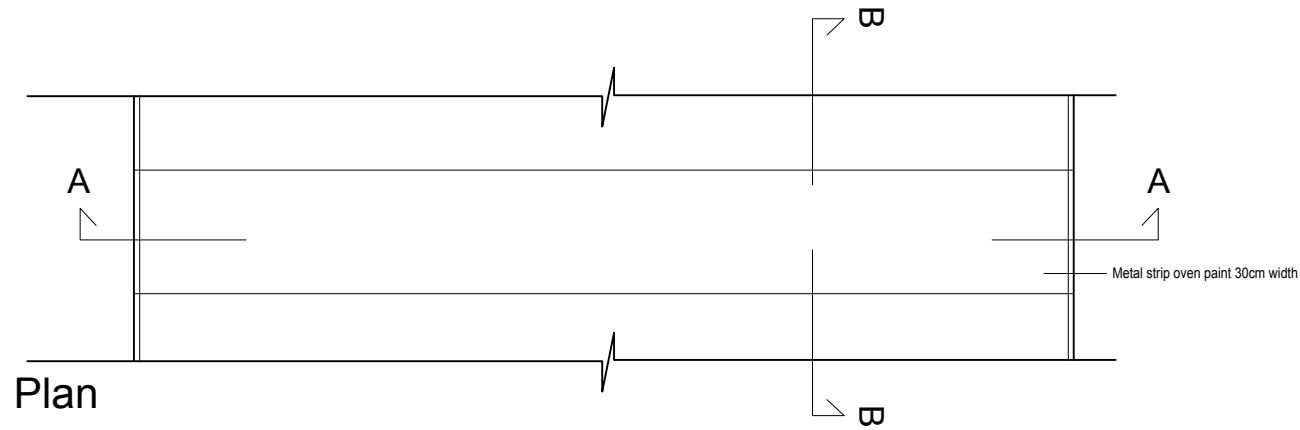


Form Architects and Engineers

DRAWING TITLE:

CD2  
Ground Floor

DATE	SCALE	SHEET NUMBER
Sep.,2015		A015



## Notes

- All Dimensions are in cm.

date of revision	initials	revision details

PROJECT NAME

Family and Juvenile  
protection unit  
(FJPU)  
Ramallah

PRODUCED BY:

DESIGNED BY:

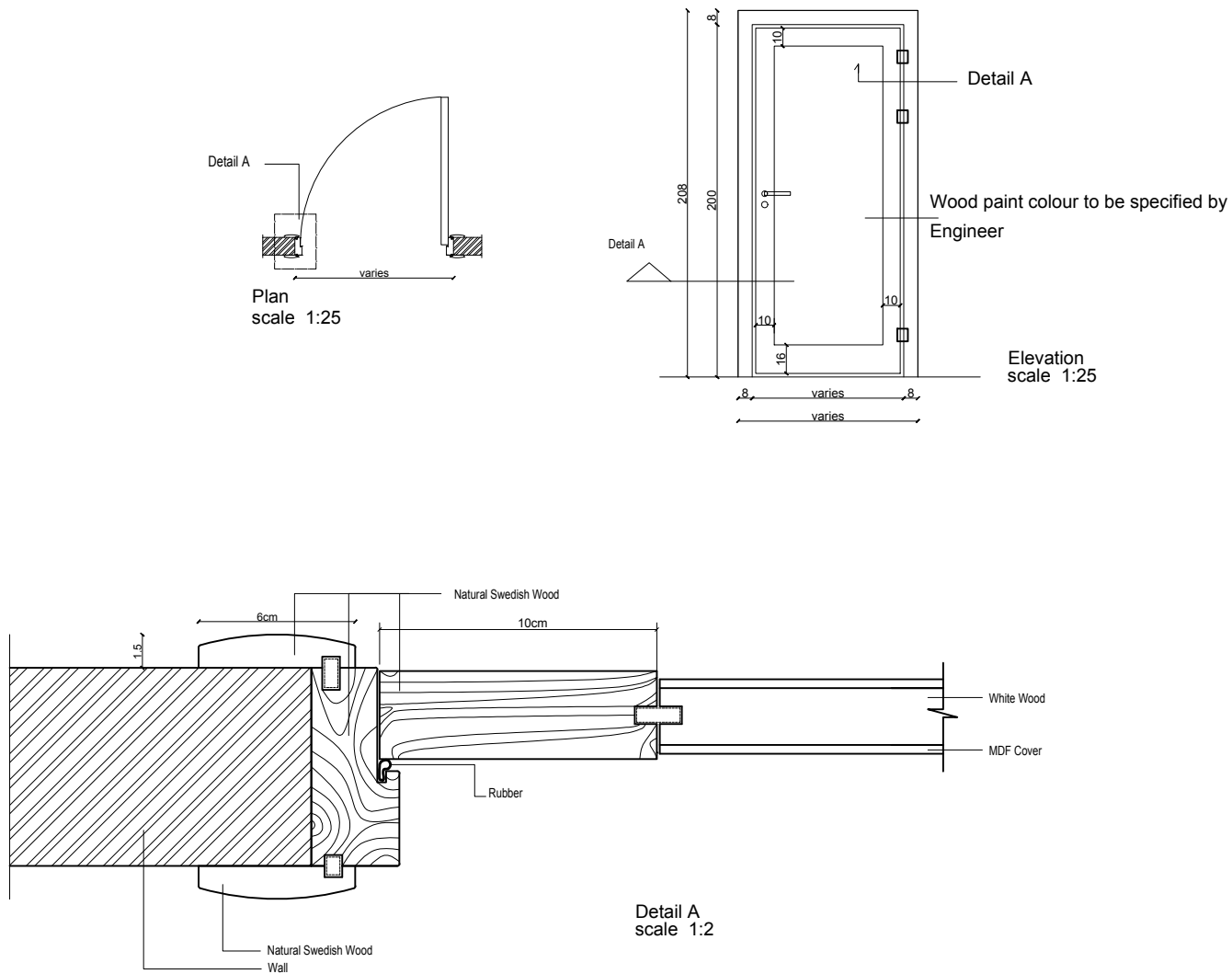


Form Architects and Engineers

DRAWING TITLE:

CD3  
Ground Floor

DATE	SCALE	SHEET NUMBER
Sep.,2015		A016



## Notes

- All Dimensions are in cm.

- ① Natural Swedish wood.
- ② 16mm Sandwich wood.
- ③ 16mm Sandwich covered with 1mm natural Swedish wood crust.
- ④ 16mm Sandwich covered with 1mm Matt Stainless steel (Melotage).
- ⑤ Natural white wood
- ⑥ 10mm Tempered clear glass.
- ⑦ 2cm Granite (Absolute).
- ⑧ 2cm Stone (Tafoh stone).
- ⑨ Bricks.
- ⑩ 6mm MDF covered with Swedish wood crust.

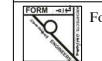
date of revision	initials	revision details

PROJECT NAME

Family and Juvenile  
protection unit  
(FJPU)  
Ramallah

PRODUCED BY:

DESIGNED BY:



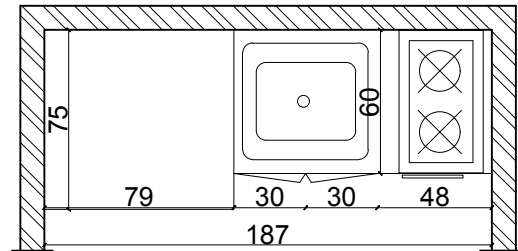
Form Architects and Engineers

DRAWING TITLE:

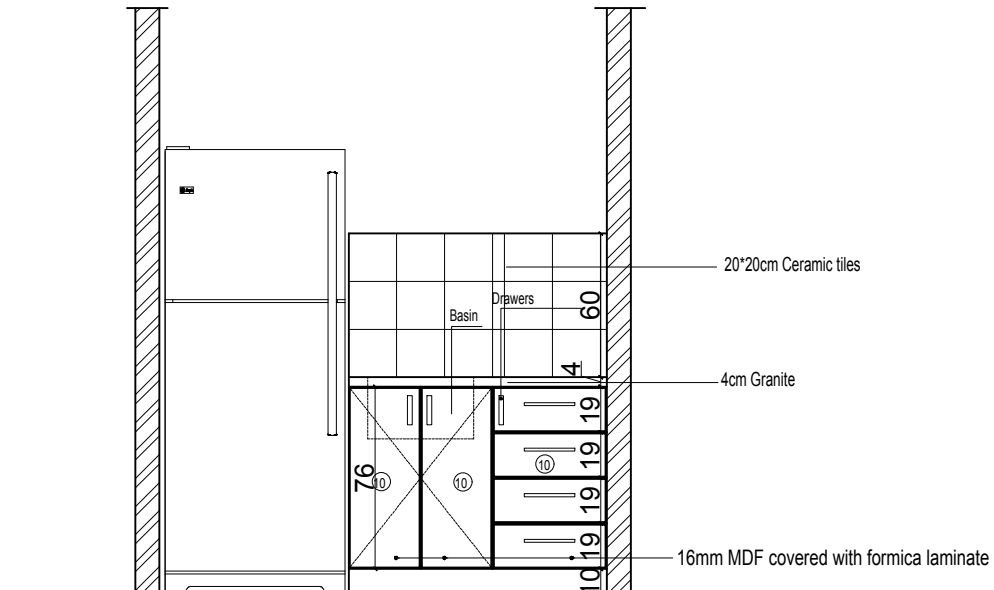
Door Detail  
Ground Floor

DATE	SCALE	SHEET NUMBER
Sep.,2015		A017

Plan  
scale 1:20



Elevation 1



Elevation 1  
scale 1:20

## Notes

- All Dimensions are in cm.

- ① Natural Swedish wood.
- ② 16mm Sandwich wood.
- ③ 16mm Sandwich covered with 1mm natural Swedish wood crust.
- ④ 16mm Sandwich covered with 1mm Matt Stainless steel (Melotage).
- ⑤ Natural white wood
- ⑥ 10mm Tempered clear glass.
- ⑦ 2cm Granite (Absolute).
- ⑧ 2cm Stone (Tafoh stone).
- ⑨ Bricks.
- ⑩ 6mm MDF covered with Swedish wood crust.

date of revision	initials	revision details

PROJECT NAME

Family and Juvenile  
protection unit  
(FJPU)  
Ramallah

PRODUCED BY:

DESIGNED BY:



Form Architects and Engineers

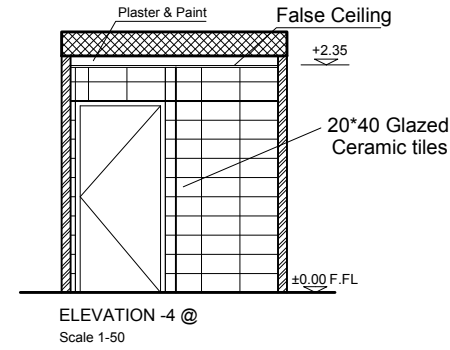
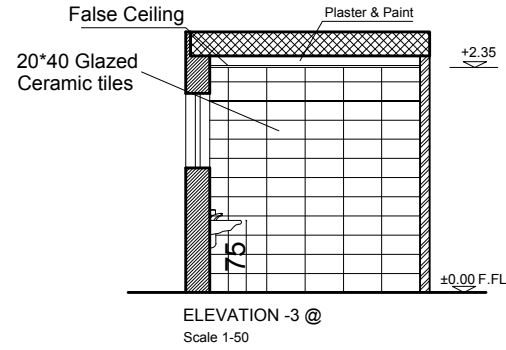
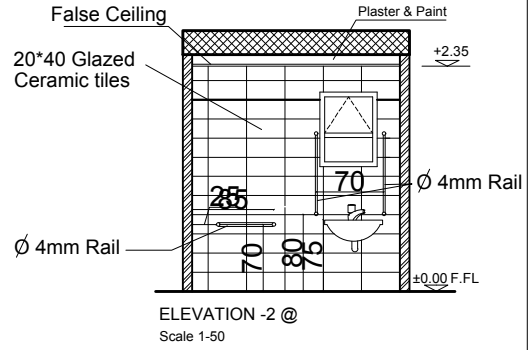
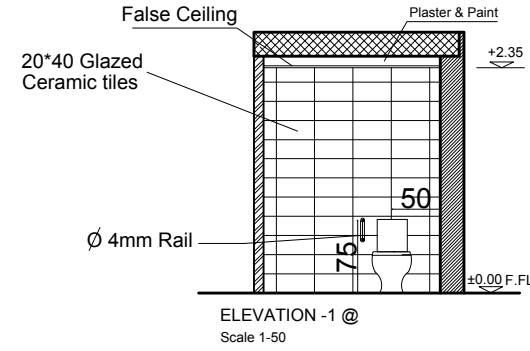
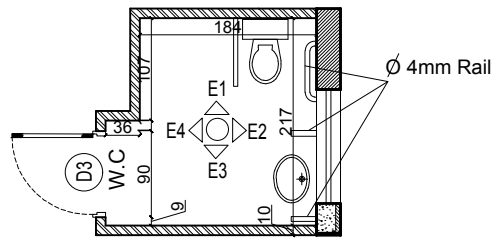
DRAWING TITLE:

Kitchenette Detail (AD-01)

Ground Floor Plan

DATE	SCALE	SHEET NUMBER
Sep.,2015		A018

# 1 Handicapped W.C Plan Scale 1/50



## Notes

- All Dimensions are in cm.

date of revision	initials	revision details

PROJECT NAME

Family and Juvenile  
protection unit  
(FJPU)  
Ramallah

PRODUCED BY:

DESIGNED BY:



Form Architects and Engineers

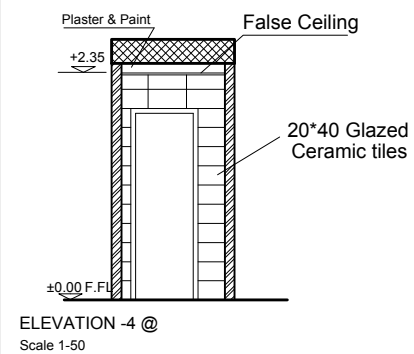
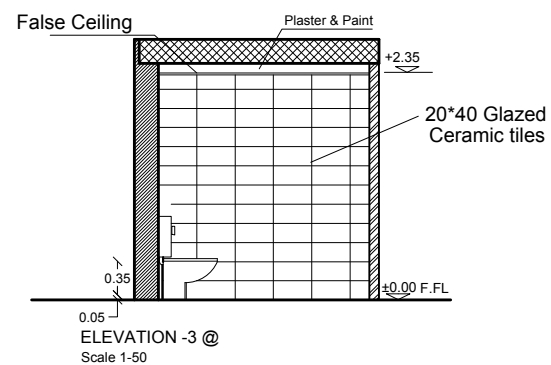
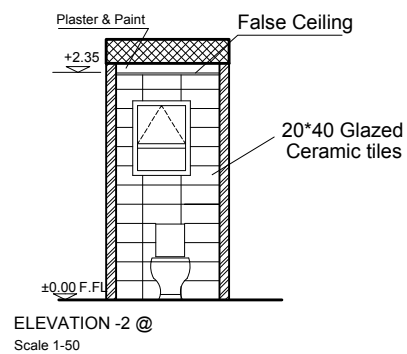
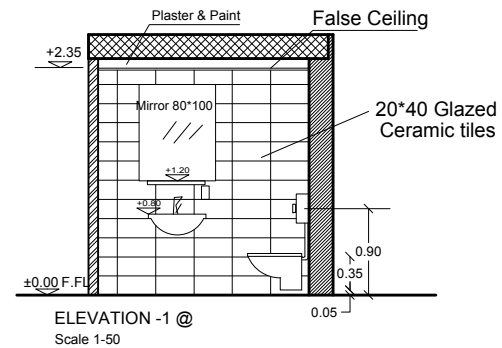
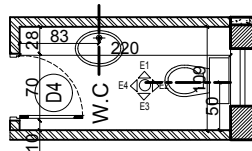
DRAWING TITLE:

Handicap Toilet Detail  
Ground Floor Plan

DATE	SCALE	SHEET NUMBER
Sep.,2015		A019

### W.C Plan

Scale 1/50



## Notes

- All Dimensions are in cm.

[illegible]

PROJECT NAME
--------------

Family and Juvenile  
protection unit  
(FJPU)  
Ramallah

PRODUCED BY:	
--------------	--

DESIGNED BY:

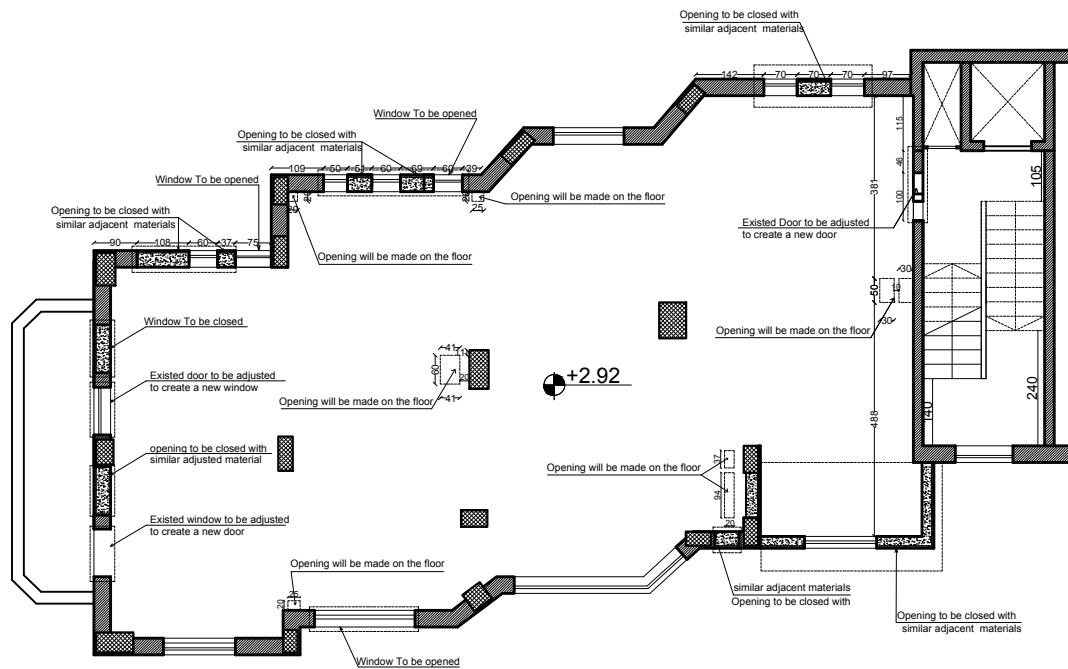


Form Architects and Engineers

DRAWING TITLE:




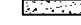

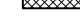
Toilet Detail  
Ground Floor Plan

DATE	SCALE	SHEET NUMBER
Sep.,2015		A020



## Notes

- All Dimensions are in cm.

-  Existing Walls
-  Hollow Blocks
-  Gypsum Walls
-  Concrete
-  Stone
-  Reinforced Concrete

Procedure before opening ducts:

- Before opening the ducts the contractor must remove the plaster at the location of duct.
- The engineer to check the location of the beams
- The engineer to instruct the contractor to open the floors if the beams do not contradict with opening location.
- If any discrepancy found the duct location should be adjusted to a nearest location without any contradiction with beams.

date of revision	initials	revision details



PROJECT NAME

Family and Juvenile  
protection unit  
(FJU)  
Ramallah

PRODUCED BY:

DESIGNED BY:



Form Architects and Engineers

DRAWING TITLE:

Alteration Plan  
First Floor

DATE	SCALE	SHEET NUMBER
Sep,2015	1-100	A103