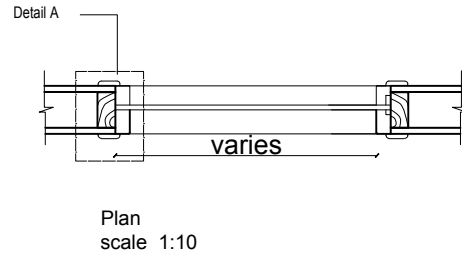
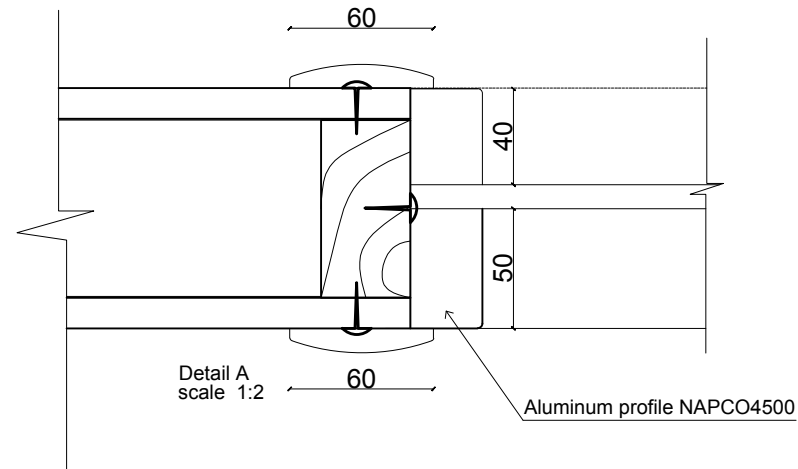
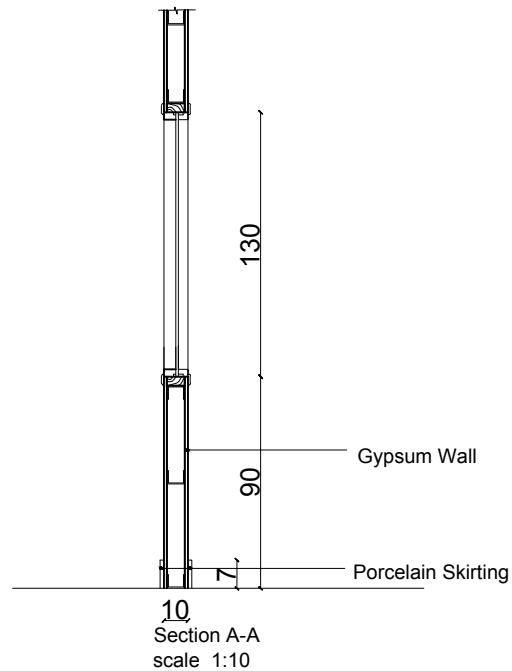
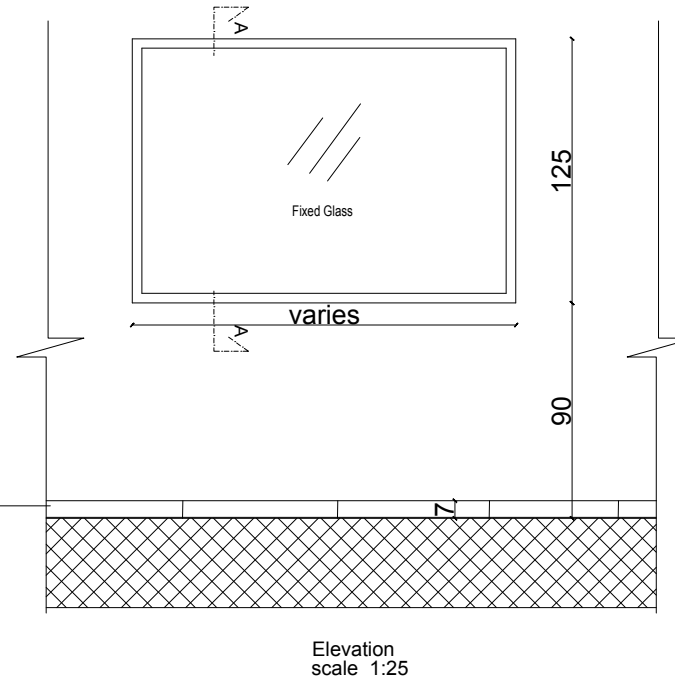


Typical Window Details



Terrazzo Skirting match the existing tiles



Notes

- All Dimensions are in cm.

date of revision	initials	revision details

PROJECT NAME

Family and Juvenile
protection unit
(FJPU)
Ramallah

PRODUCED BY:

DESIGNED BY:



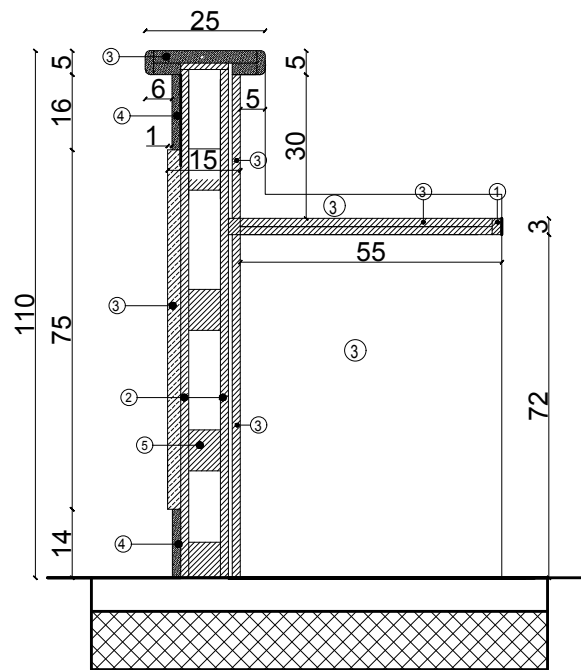
Form Architects and Engineers

DRAWING TITLE:

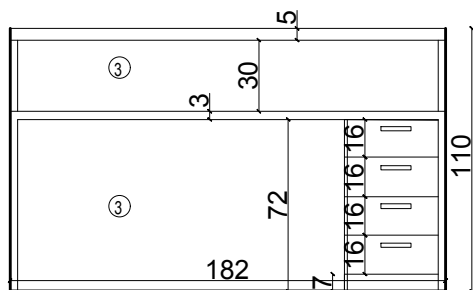
Securest Detail

Ground Floor Plan

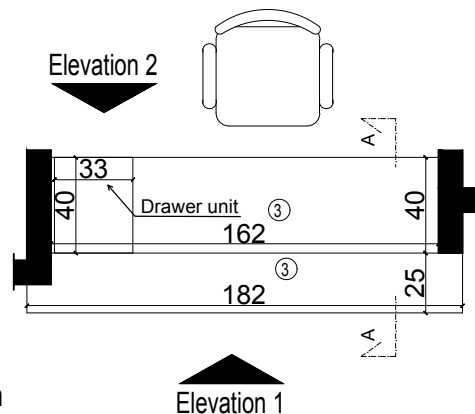
DATE	SCALE	SHEET NUMBER
Sep.,2015		A021



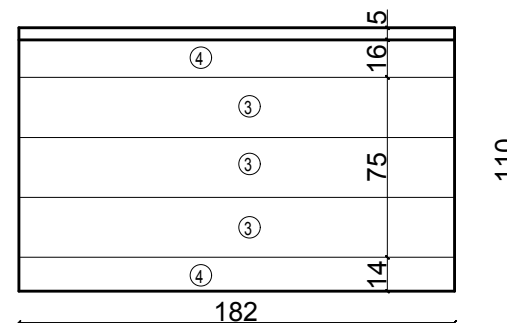
Section A-A
scale 1:10



Elevation 2
scale 1:20



Plan
Scale 1:20



Elevation 1
Scale 1:20

Notes

- All Dimensions are in cm.
- ① Natural Swedish wood.
- ② 16mm Sandwich wood.
- ③ 16mm Sandwich covered with 1mm Zan wood crust.
- ④ 16mm Sandwich covered with 1mm Matt Stainless steel (Melotage).
- ⑤ Natural white wood
- ⑥ 10mm Tempered clear glass.
- ⑦ 2cm Granite (Absolute).
- ⑧ 2cm Stone (Tafah stone).
- ⑨ Bricks.

date of revision	initials	revision details

PROJECT NAME

Family and Juvenile
protection unit
(FJPU)
Ramallah

PRODUCED BY:

DESIGNED BY:



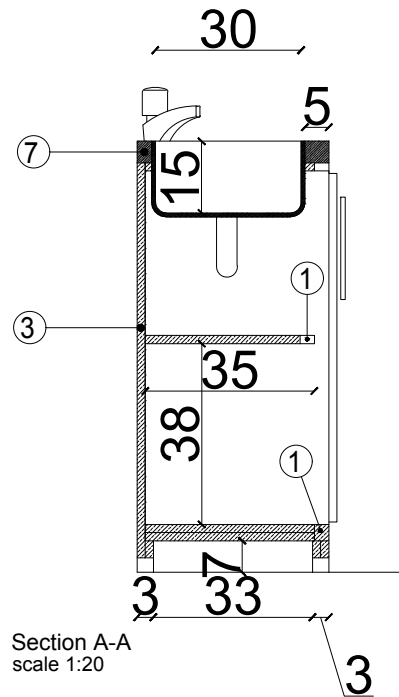
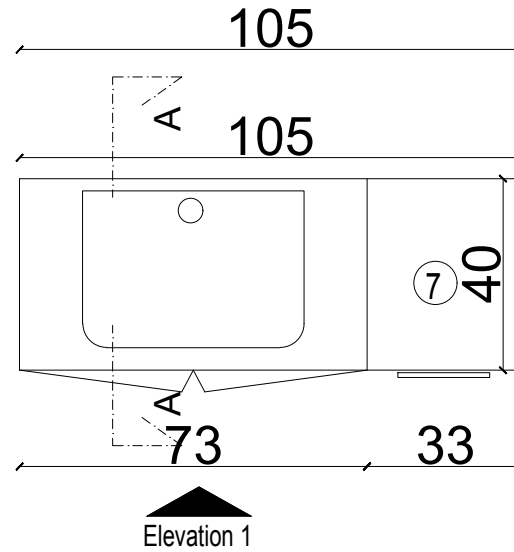
Form Architects and Engineers

DRAWING TITLE:

AD - 02
Ground Floor

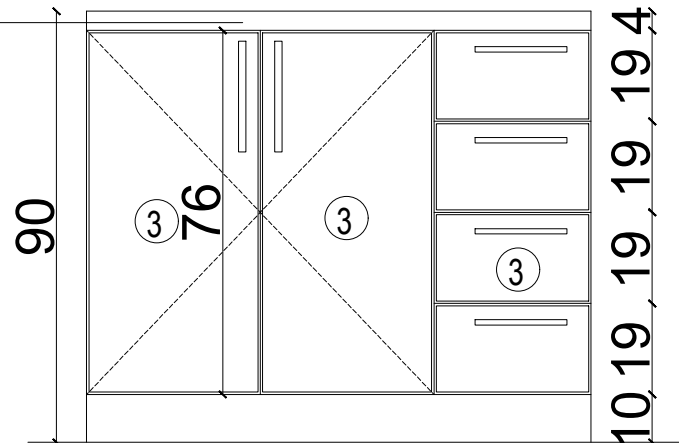
DATE	SCALE	SHEET NUMBER
Sep.,2015		A022

Plan
Scale 1:20



4cm Granite

Elevation 1
Scale 1:20



Notes

- All Dimensions are in cm.

- ① Natural Swedish wood.
- ② 16mm Sandwich wood.
- ③ 16mm Sandwich covered with 1mm natural Swedish wood crust.
- ④ 16mm Sandwich covered with 1mm Matt Stainless steel (Melotage).
- ⑤ Natural white wood
- ⑥ 10mm Tempered clear glass.
- ⑦ 2cm Granite (Absolute).
- ⑧ 2cm Stone (Tafah stone).
- ⑨ Bricks.
- ⑩ 6mm MDF covered with Swedish wood crust.

date of revision	initials	revision details

PROJECT NAME

Family and Juvenile
protection unit
(FJPU)
Ramallah

PRODUCED BY:

DESIGNED BY:



Form Architects and Engineers

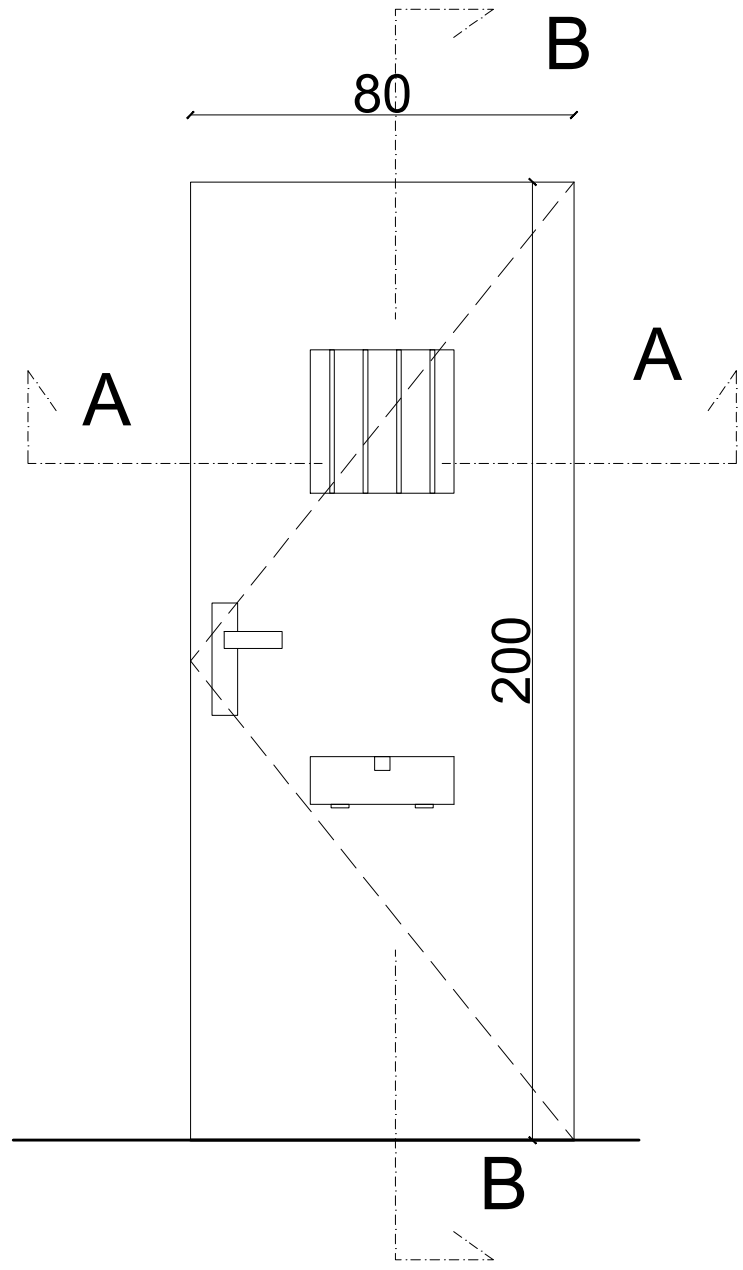
DRAWING TITLE:

AD - 03
Ground Floor

DATE	SCALE	SHEET NUMBER
Sep.,2015		A023

AD15, AD16

Scale 1:20



Notes

- All Dimensions are in cm.
- ① Natural Swedish wood.
 - ② 16mm Sandwich wood.
 - ③ 16mm Sandwich covered with 1mm natural Swedish wood crust.
 - ④ 16mm Sandwich covered with 1mm Matt Stainless steel (Melotage).
 - ⑤ Natural white wood
 - ⑥ 10mm Tempered clear glass.
 - ⑦ 2cm Granite (Absolute).
 - ⑧ 2cm Stone (Tafah stone).
 - ⑨ Bricks.
 - ⑩ 6mm MDF covered with Swedish wood crust.

date of revision	initials	revision details

PROJECT NAME

Family and Juvenile
protection unit
(FJPU)
Ramallah

PRODUCED BY:

DESIGNED BY:

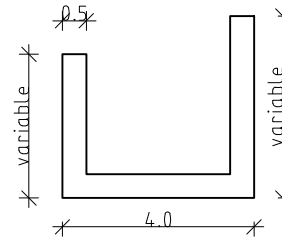
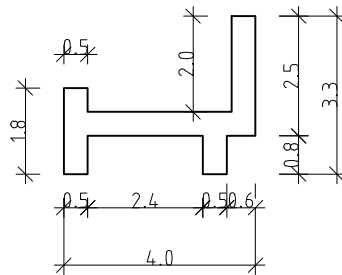
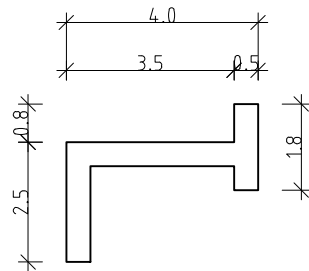
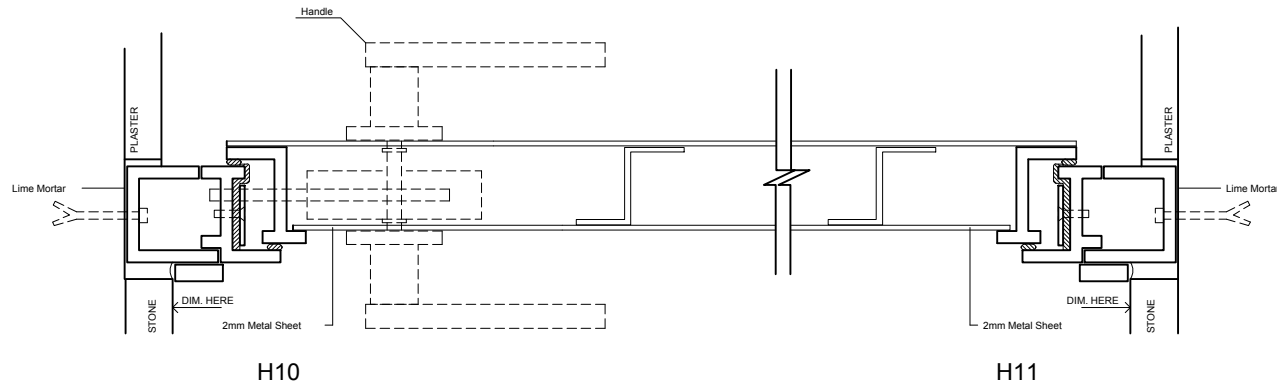


Form Architects and Engineers

DRAWING TITLE:

Detention Door Detail
Ground Floor

DATE	SCALE	SHEET NUMBER
Sep.,2015		A024



STEEL SECTIONS

Notes

- All Dimensions are in cm.
- ① Natural Swedish wood.
 - ② 16mm Sandwich wood.
 - ③ 16mm Sandwich covered with 1mm Zan wood crust.
 - ④ 16mm Sandwich covered with 1mm Matt Stainless steel (Melotage).
 - ⑤ Natural white wood
 - ⑥ 10mm Tempered clear glass.
 - ⑦ 2cm Granite (Absolute).
 - ⑧ 2cm Stone (Tafah stone).
 - ⑨ Bricks.

date of revision	initials	revision details

PROJECT NAME

Family and Juvenile
protection unit
(FJPU)
Ramallah

PRODUCED BY:

DESIGNED BY:

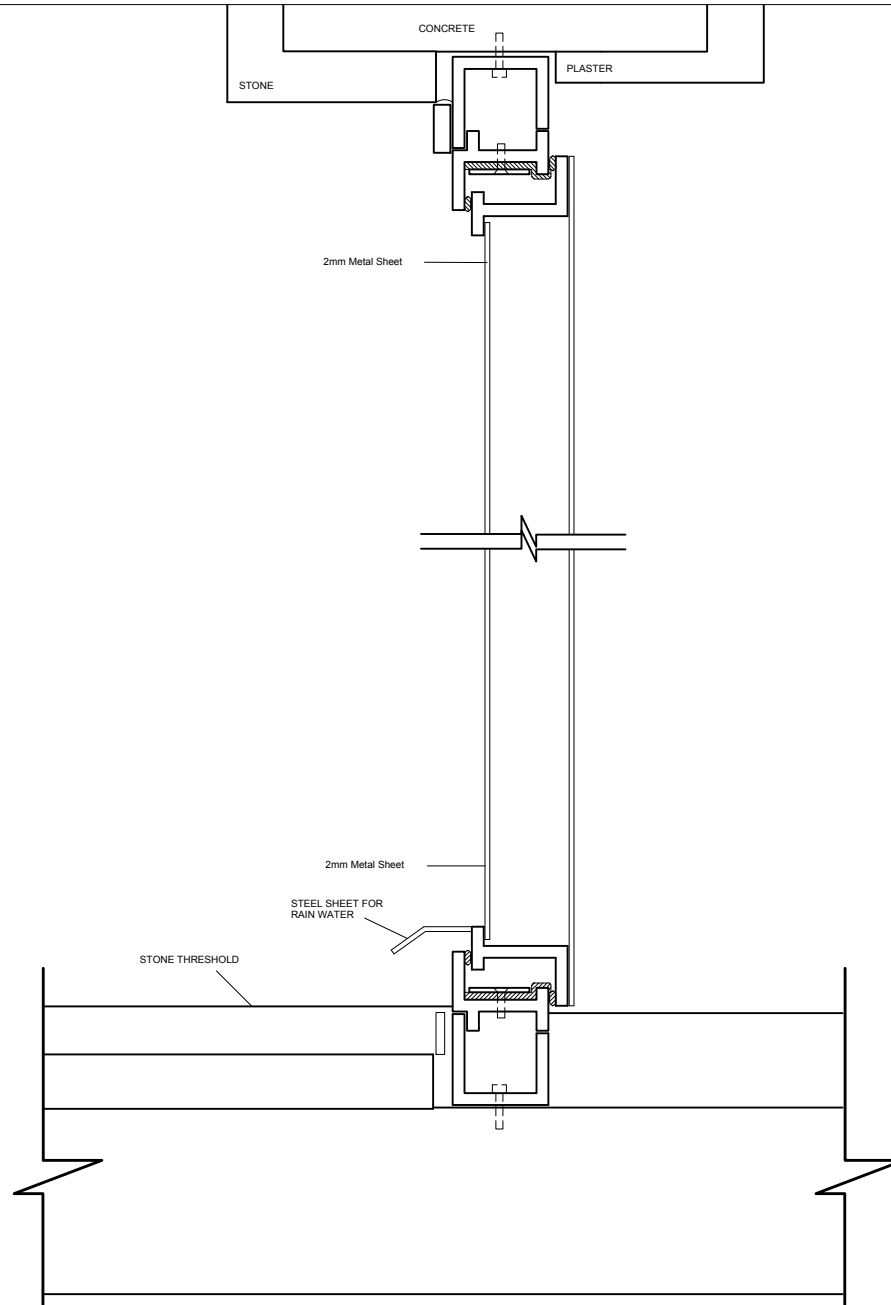


Form Architects and Engineers

DRAWING TITLE:

Section A-A
Ground Floor

DATE	SCALE	SHEET NUMBER
Sep.,2015		A025



Notes

- All Dimensions are in cm.
- 1 Natural Swedish wood.
 - 2 16mm Sandwich wood.
 - 3 16mm Sandwich covered with 1mm Zan wood crust.
 - 4 16mm Sandwich covered with 1mm Matt Stainless steel (Melotage).
 - 5 Natural white wood
 - 6 10mm Tempered clear glass.
 - 7 2cm Granite (Absolute).
 - 8 2cm Stone (Tafon stone).
 - 9 Bricks.

date of revision	initials	revision details

PROJECT NAME

Family and Juvenile
protection unit
(FJPU)
Ramallah

PRODUCED BY:

DESIGNED BY:

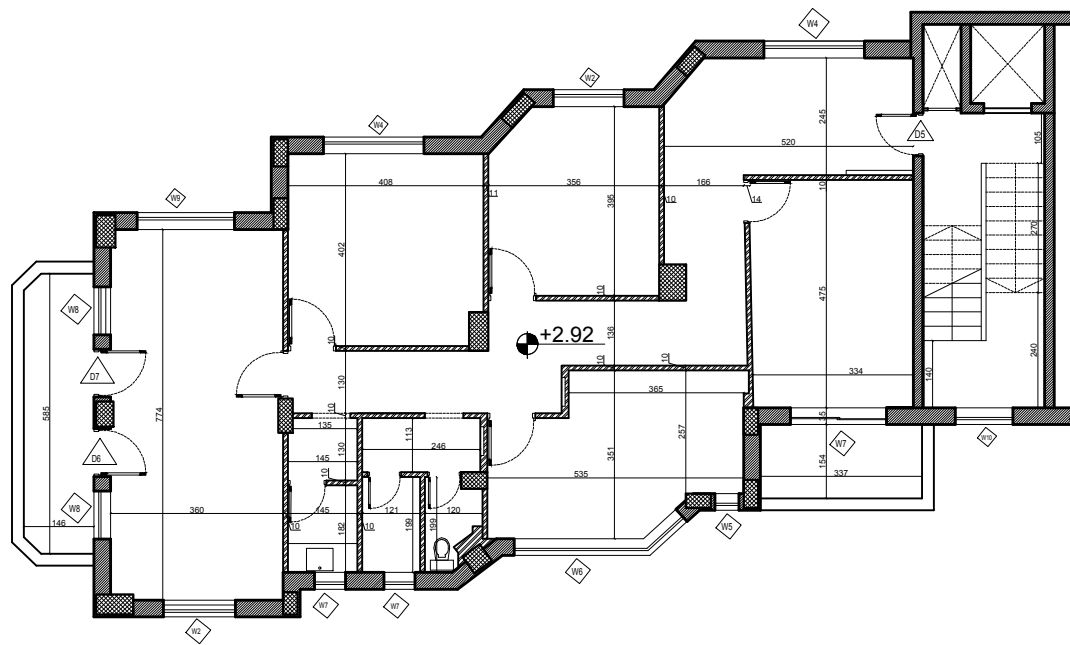
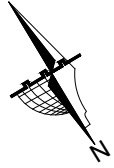


Form Architects and Engineers

DRAWING TITLE:

Section B-B
Ground Floor

DATE	SCALE	SHEET NUMBER
Sep.,2015		A026



Notes

- All Dimensions are in cm.

- Existing Walls
- Hollow Blocks
- Gypsum Walls
- Concrete
- Stone
- Reinforced Concrete

date of revision	initials	revision details



PROJECT NAME

Family and Juvenile
protection unit
(FJPU)
Ramallah

PRODUCED BY:

DESIGNED BY:

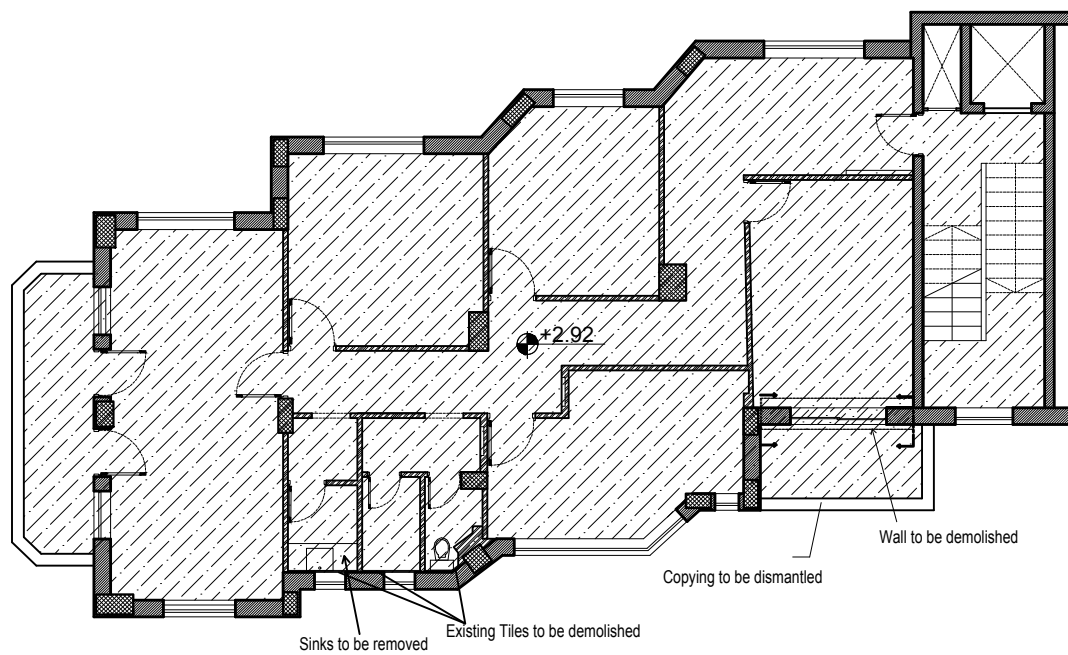
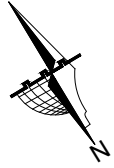


Form Architects and Engineers

DRAWING TITLE:




As Built Drawing
First Floor

DATE	SCALE	SHEET NUMBER
Sep.,2015	1-100	A101



Notes

- All Dimensions are in cm.

-  Hollow Blocks to be demolished
-  Floor tiles to be removed at the internal floor
-  Gypsum Walls to be demolished

* All Waste materials to be removed to approved dump location.

* All Doors and windows to be dismantled and stored as instructed by the engineer.

* the site should be prepared for the new installations

date of revision	initials	revision details



PROJECT NAME

Family and Juvenile
protection unit
(FJPU)
Ramallah

PRODUCED BY:

DESIGNED BY:

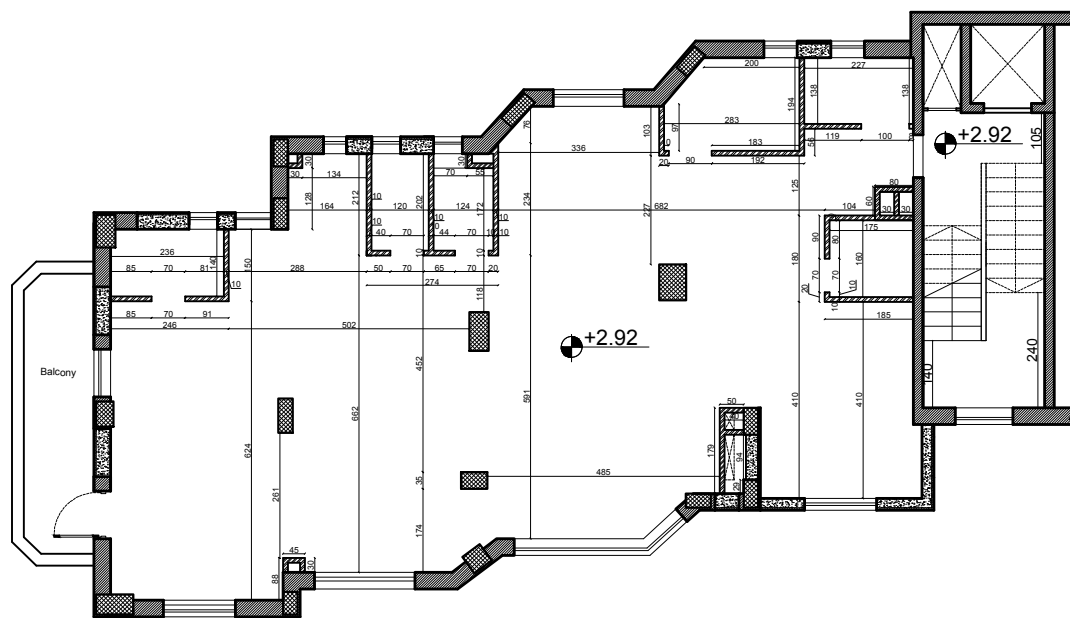


Form Architects and Engineers

DRAWING TITLE:




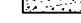


Demolish Plan
First Floor

DATE	SCALE	SHEET NUMBER
Sep,2015	1-100	A102



Notes

- All Dimensions are in cm.

-  Existing Walls
-  Hollow Blocks
-  Gypsum Walls
-  Concrete
-  Stone
-  Reinforced Concrete

date of revision	initials	revision details



PROJECT NAME

Family and Juvenile
protection unit
(FJU)
Ramallah

PRODUCED BY:

DESIGNED BY:

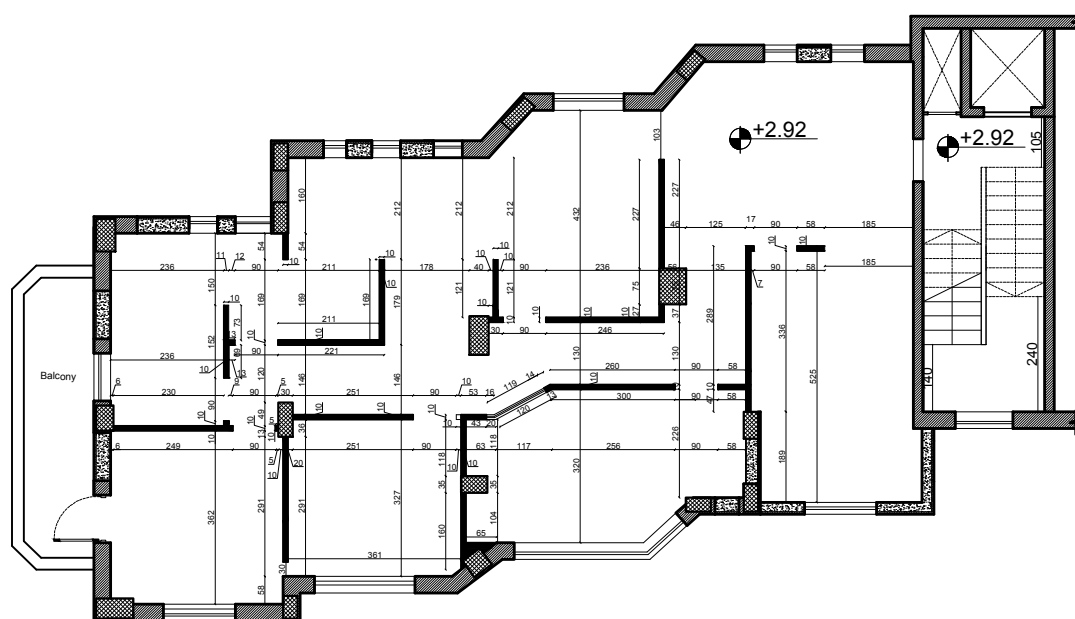


Form Architects and Engineers

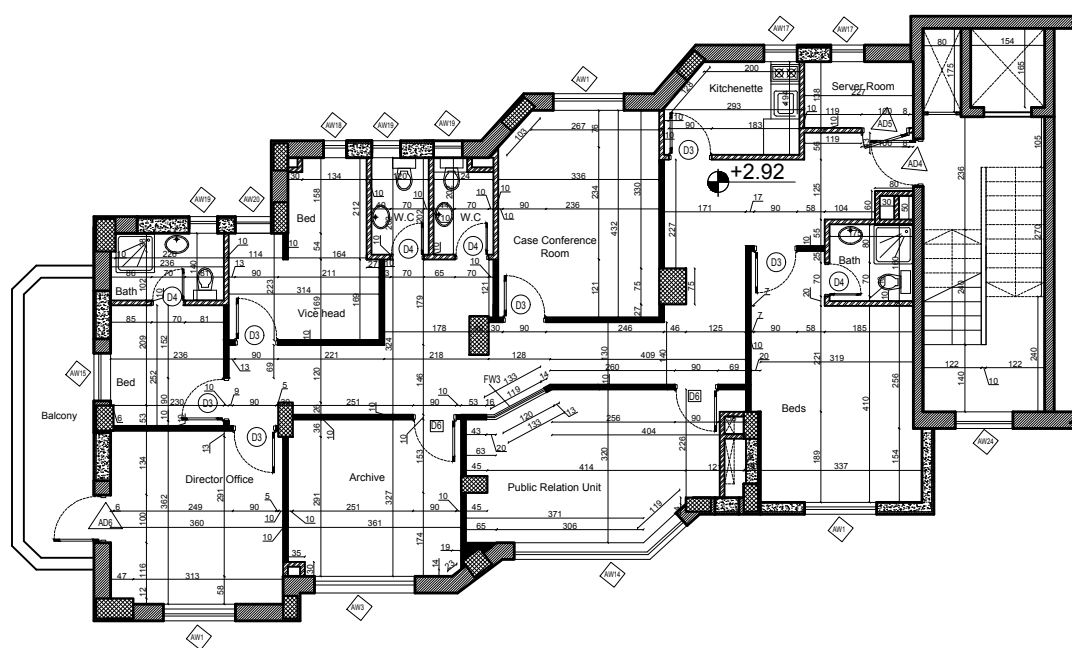
DRAWING TITLE:

Hollow Block Walls
First Floor

DATE	SCALE	SHEET NUMBER
Sep,2015	1-100	A104




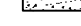

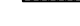


DATE	SCALE	SHEET NUMBER
Sep,2015	1-100	A105



Notes

- All Dimensions are in cm.

-  Existing Walls
-  Hollow Blocks
-  Gypsum Walls
-  Concrete
-  Stone
-  Reinforced Concrete

date of revision	initials	revision details



PROJECT NAME

Family and Juvenile
protection unit
(FJPU)
Ramallah

PRODUCED BY:

DESIGNED BY:

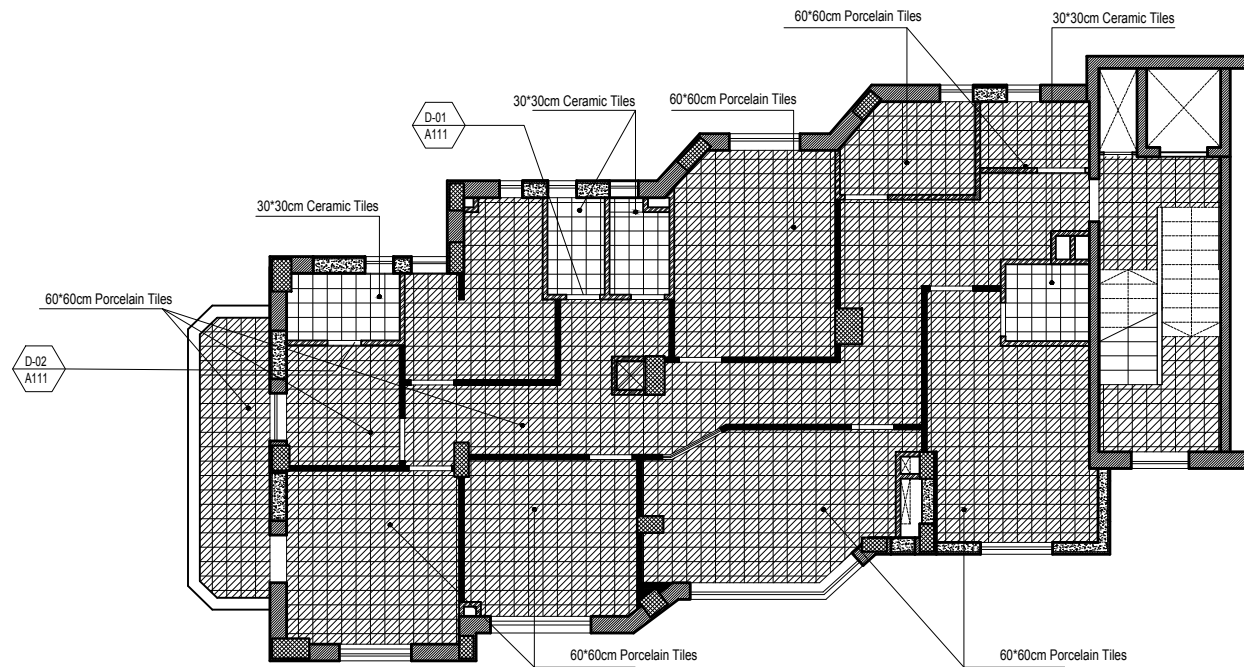


Form Architects and Engineers

DRAWING TITLE:

Dimension Plan
First Floor

	SCALE	SHEET NUMBER
Sep,2015	1-100	A106



Notes

- All Dimensions are in cm.

	Existing Walls
	Hollow Blocks
	Gypsum Walls
	Concrete
	Stone
	Reinforced Concrete

date of revision	initials	revision details



PROJECT NAME

Family and Juvenile
protection unit
(FJU)
Ramallah

PRODUCED BY:

DESIGNED BY:

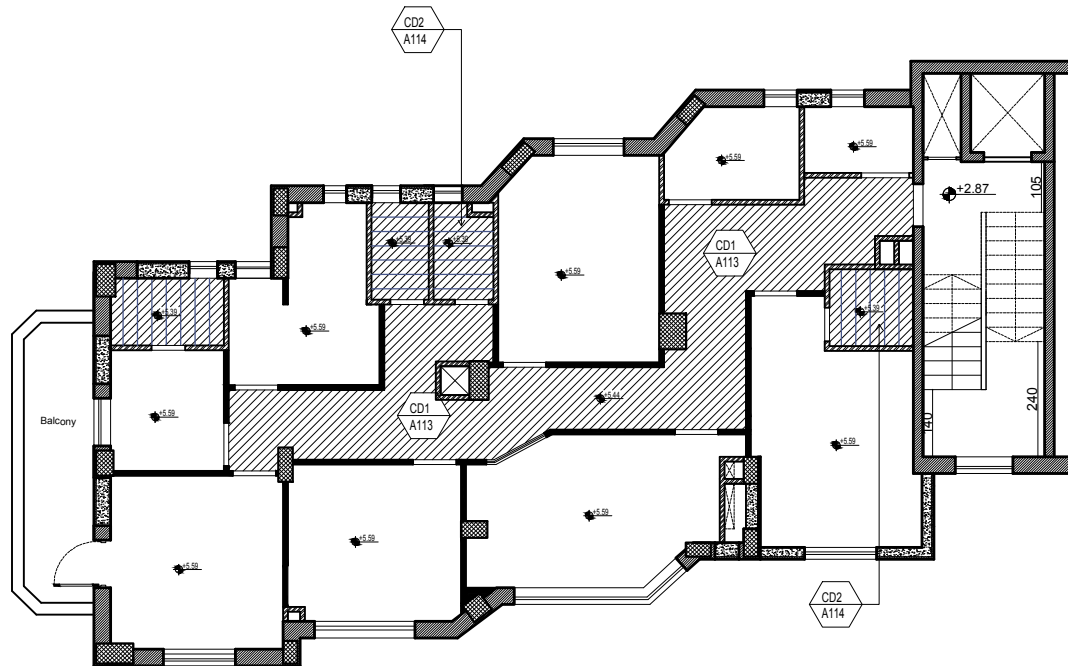
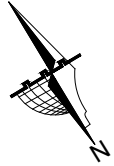


Form Architects and Engineers

DRAWING TITLE:








Tiling Plan
First Floor

DATE	SCALE	SHEET NUMBER
Sep,2015	1-100	A107



Notes

- All Dimensions are in cm.

-  Existing Walls
-  Hollow Blocks
-  Gypsum Walls
-  Concrete
-  Stone
-  Reinforced Concrete
-  False Ceiling

date of revision	initials	revision details



PROJECT NAME

Family and Juvenile
protection unit
(FJPU)
Ramallah

PRODUCED BY:

DESIGNED BY:

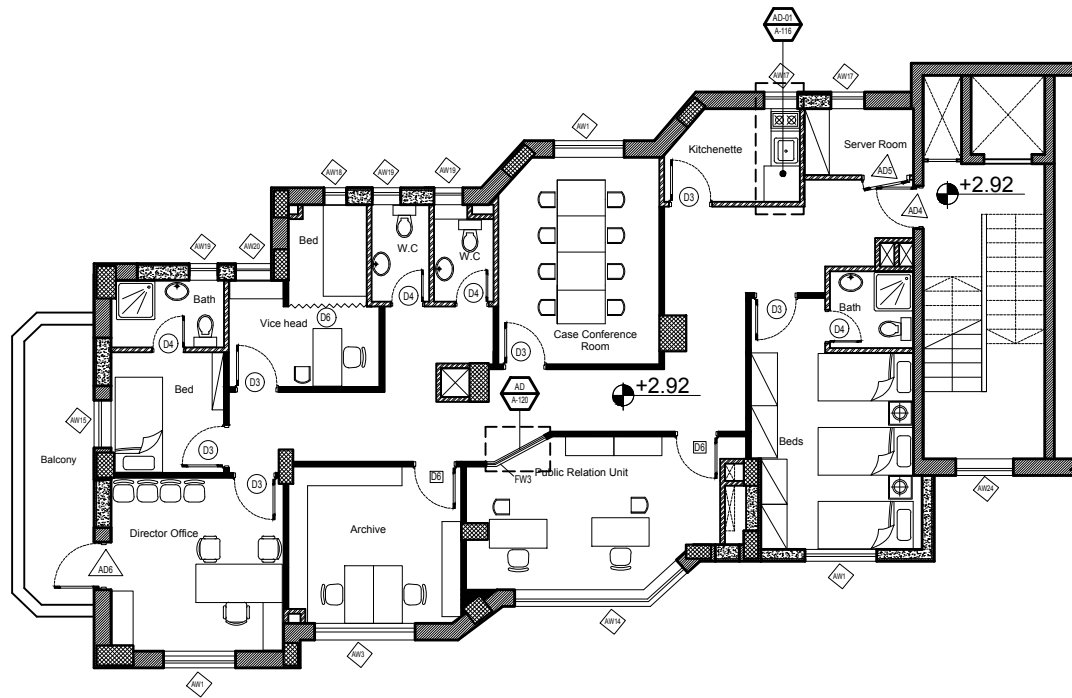
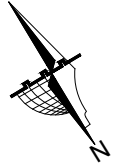


Form Architects and Engineers

DRAWING TITLE:



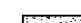



False Ceiling Plan
First Floor

SCALE	SHEET NUMBER
Sep,2015	1-100 A108



Notes

- All Dimensions are in cm.

-  Existing Walls
-  Hollow Blocks
-  Gypsum Walls
-  Concrete
-  Stone
-  Reinforced Concrete

date of revision	initials	revision details



PROJECT NAME

Family and Juvenile
protection unit
(FJPU)
Ramallah

PRODUCED BY:

DESIGNED BY:



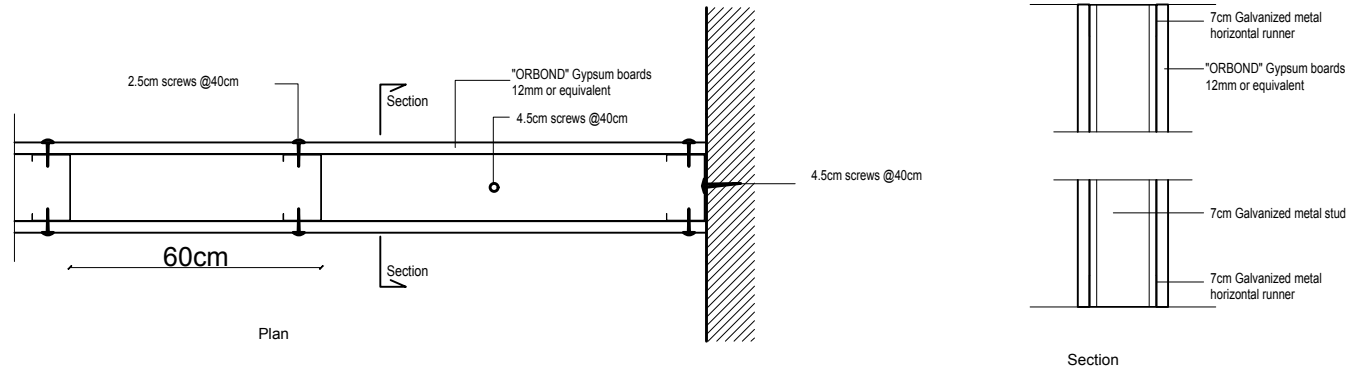
Form Architects and Engineers

DRAWING TITLE:

Furniture Layout
First Floor




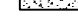


DATE	SCALE	SHEET NUMBER
Sep,2015	1-100	A109

Detail -1
Typical Details for Gypsum Board Partitions



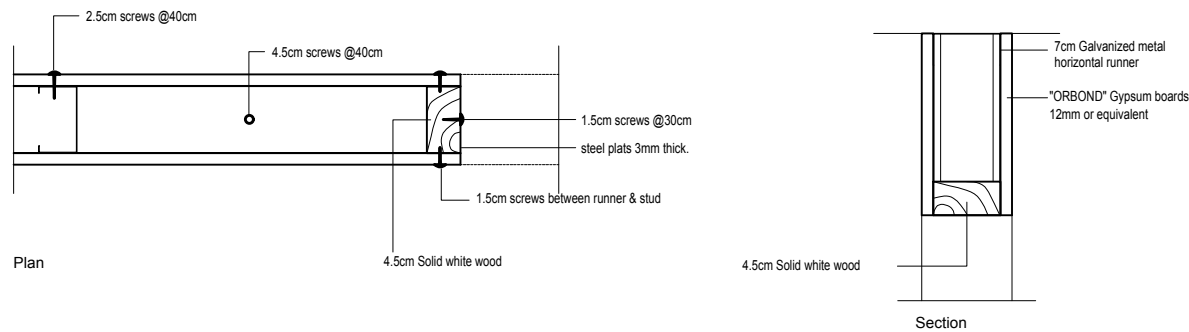
Notes

- All Dimensions are in cm.

-  Existing Walls
-  Hollow Blocks
-  Gypsum Walls
-  Concrete
-  Stone
-  Reinforced Concrete

date of revision	initials	revision details

Detail -2
Typical Details for Gypsum Board Partitions @ Wooden Doors or Windows



PROJECT NAME

Family and Juvenile
protection unit
(FJPU)
Ramallah

PRODUCED BY:

DESIGNED BY:

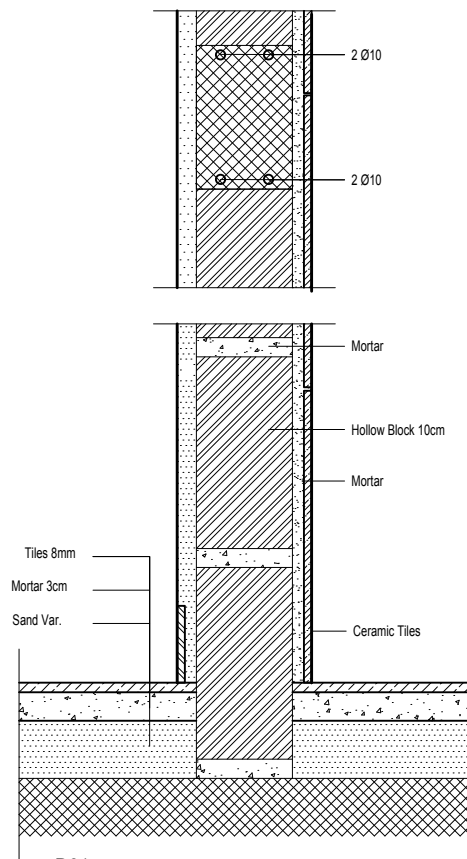


Form Architects and Engineers

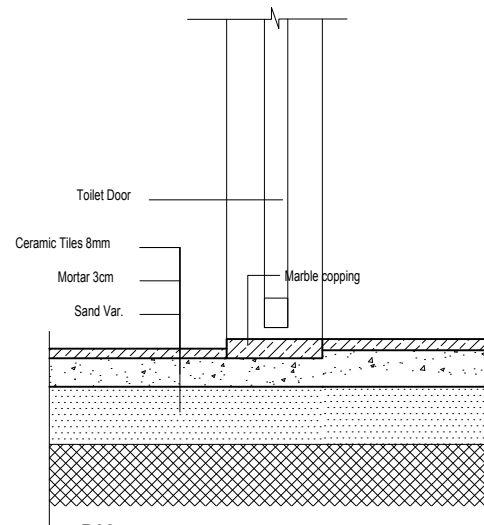
DRAWING TITLE:

Gypsum Partitions Details
Ground Floor

DATE	SCALE	SHEET NUMBER
Sep.,2015		A110









D01
(Hollow Block Detail)



D02
(Tiles Detail)

Notes

- All Dimensions are in cm.

-  Existing Walls
-  Hollow Blocks
-  Gypsum Walls
-  Concrete
-  Stone
-  Reinforced Concrete

date of revision	initials	revision details

PROJECT NAME

Family and Juvenile
protection unit
(FJPU)
Ramallah

PRODUCED BY:

DESIGNED BY:



Form Architects and Engineers

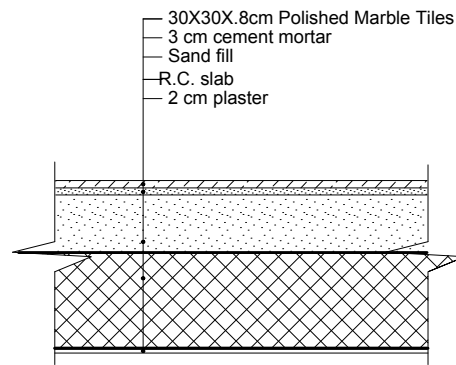
DRAWING TITLE:

Tiling Details
First Floor

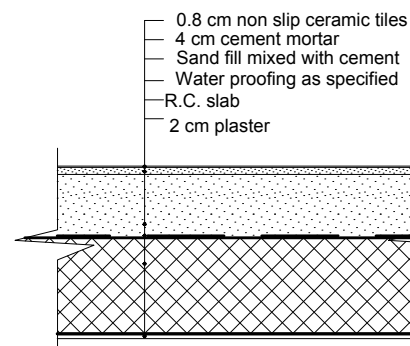
DATE	SCALE	SHEET NUMBER
Sep.,2015	----	A111

Notes

- All Dimensions are in cm.



1 Typical Detail for Porcelain Tiling Floor Finish
All Scale 1/20



3 Typical Detail for Ceramic Tiling Floor Finish at Baths (Wet areas)
All Scale 1/20

date of revision	initials	revision details

PROJECT NAME

Family and Juvenile
protection unit
(FJPU)
Ramallah

PRODUCED BY:

DESIGNED BY:



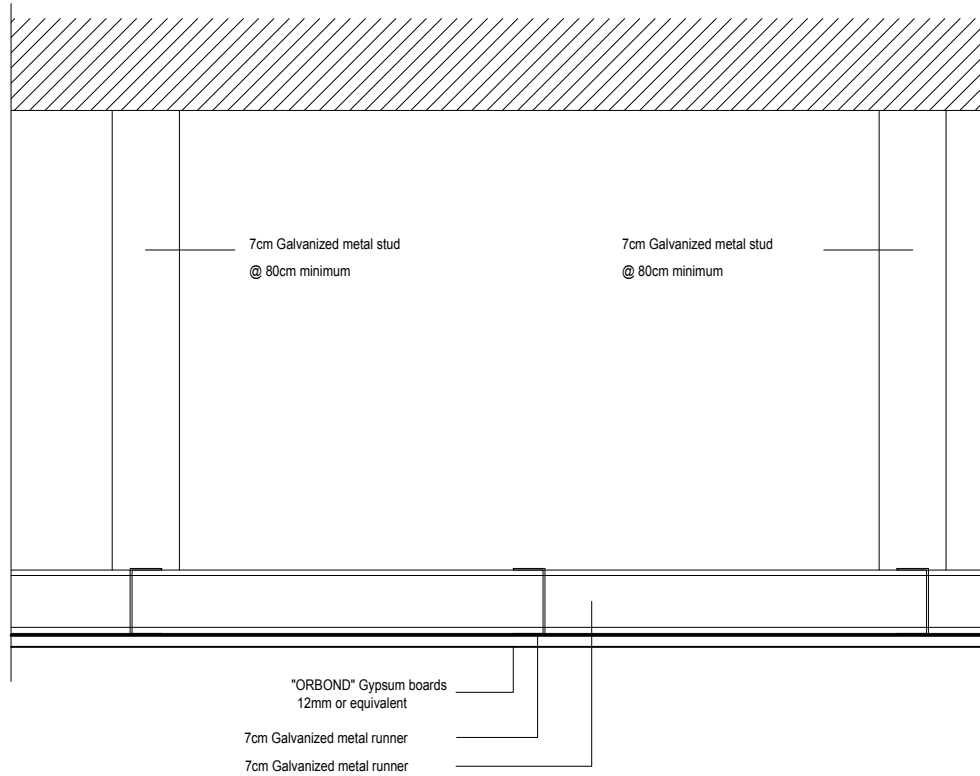
Form Architects and Engineers

DRAWING TITLE:

Tiling Details

First Plan

DATE	SCALE	SHEET NUMBER
Sep.,2015	1-20	A 112



Notes

- All Dimensions are in cm.

	Existing Walls
	Hollow Blocks
	Gypsum Walls
	Concrete
	Stone
	Reinforced Concrete

date of revision	initials	revision details

PROJECT NAME

Family and Juvenile
protection unit
(FJPU)
Ramallah

PRODUCED BY:

DESIGNED BY:

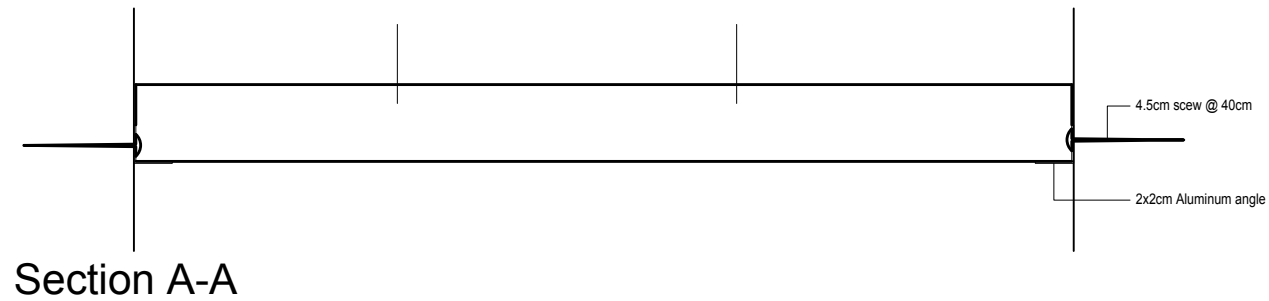
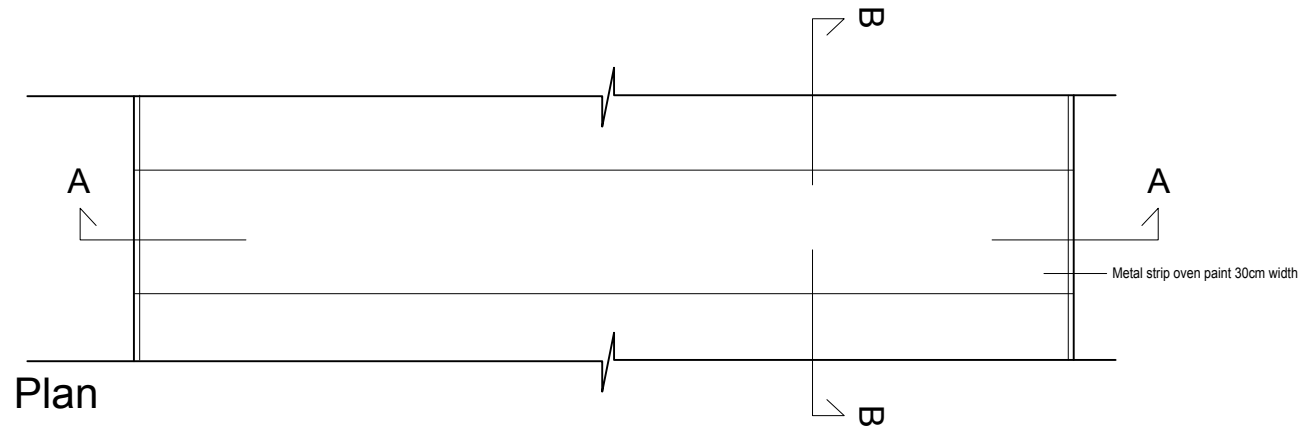


Form Architects and Engineers

DRAWING TITLE:

CD1
First Floor

DATE	SCALE	SHEET NUMBER
Sep.,2015		A113



Notes

- All Dimensions are in cm.

date of revision	initials	revision details

PROJECT NAME

Family and Juvenile
protection unit
(FJPU)
Ramallah

PRODUCED BY:

DESIGNED BY:

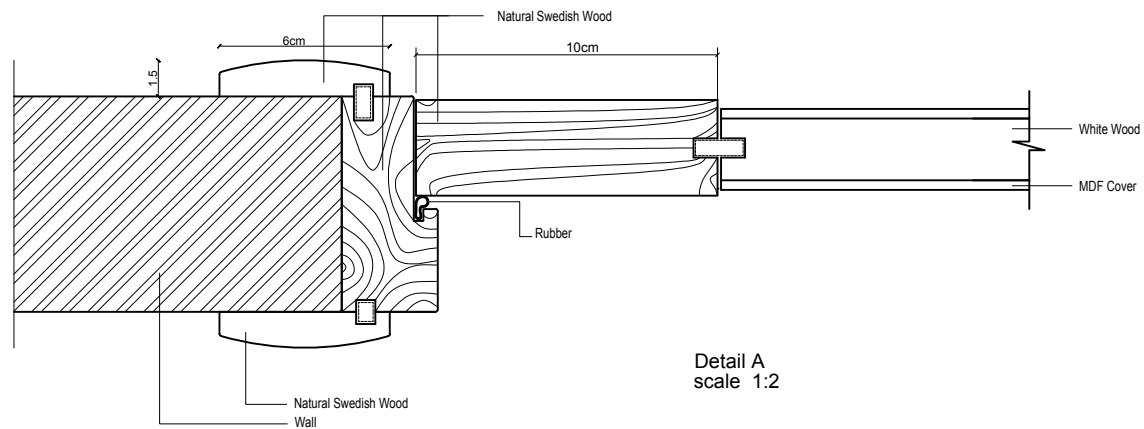
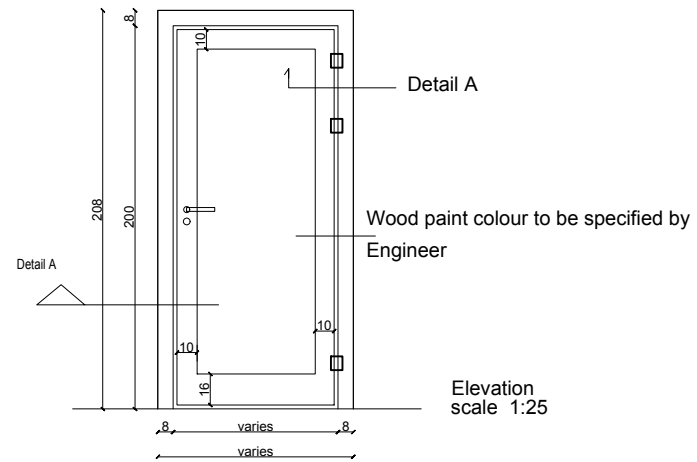


Form Architects and Engineers

DRAWING TITLE:

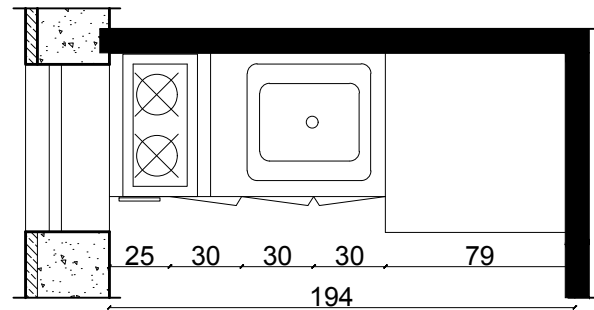
CD2
First Floor

DATE	SCALE	SHEET NUMBER
Sep.,2015		A114

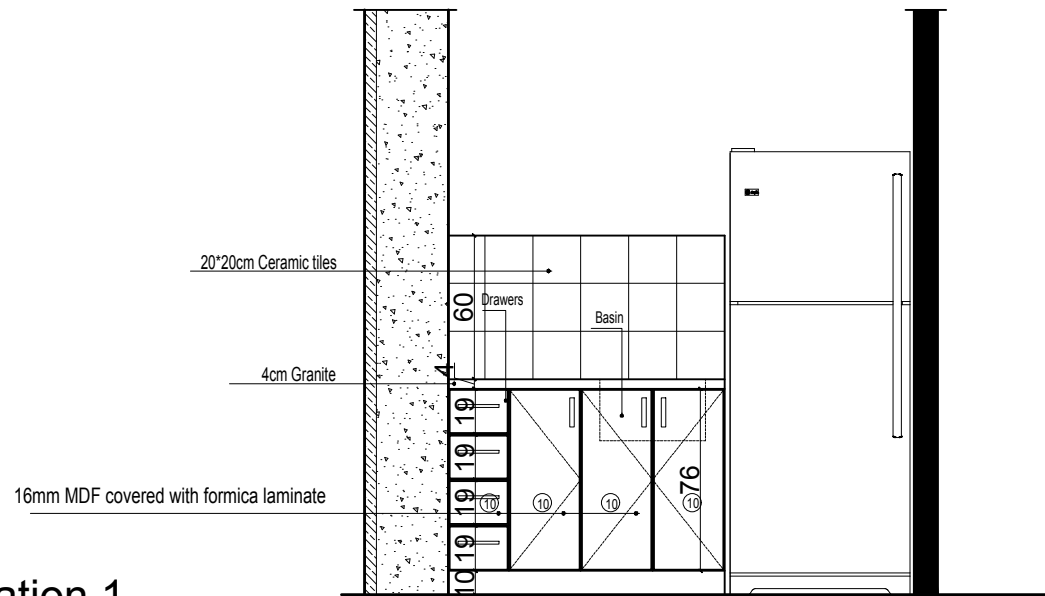


DATE	SCALE	SHEET NUMBER
Sep.,2015		A115

Plan
scale 1:20



Elevation 1



Elevation 1
scale 1:20

Notes

- All Dimensions are in cm.

- ① Natural Swedish wood.
- ② 16mm Sandwich wood.
- ③ 16mm Sandwich covered with 1mm natural Swedish wood crust.
- ④ 16mm Sandwich covered with 1mm Matt Stainless steel (Melotage).
- ⑤ Natural white wood
- ⑥ 10mm Tempered clear glass.
- ⑦ 2cm Granite (Absolute).
- ⑧ 2cm Stone (Tafoh stone).
- ⑨ Bricks.
- ⑩ 6mm MDF covered with Formica laminat

date of revision	initials	revision details

PROJECT NAME

Family and Juvenile
protection unit
(FJPU)
Ramallah

PRODUCED BY:

DESIGNED BY:



Form Architects and Engineers

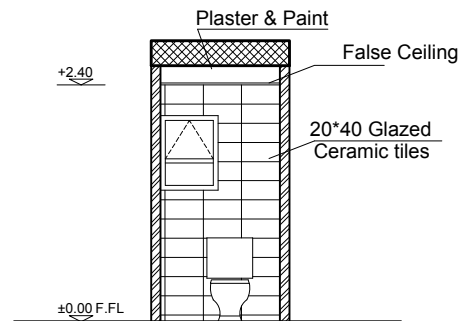
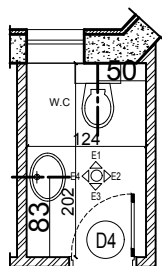
DRAWING TITLE:

Kitchenette Detail (AD-01)
First Floor

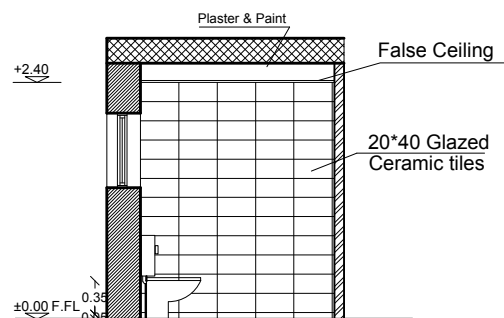
DATE	SCALE	SHEET NUMBER
Sep.,2015		A116

1 Bath Plan

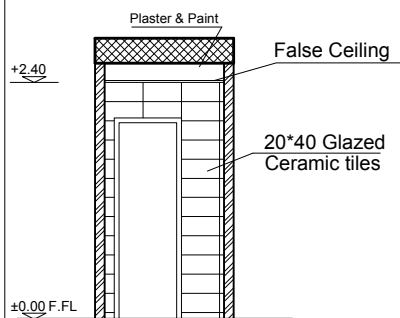
Scale 1/50



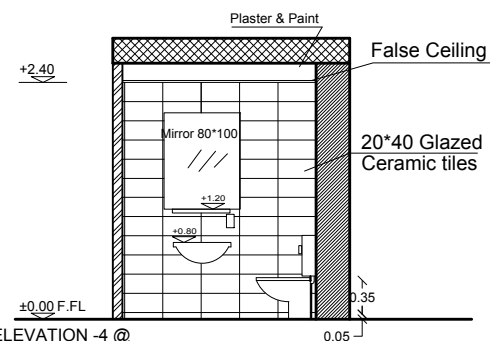
ELEVATION -1 @
Scale 1-50



ELEVATION -2 @
Scale 1-50



ELEVATION -3 @
Scale 1-50



ELEVATION -4 @
Scale 1-50

Notes

- All Dimensions are in cm.

date of revision	initials	revision details

PROJECT NAME

Family and Juvenile
protection unit
(FJPU)
Ramallah

PRODUCED BY:

DESIGNED BY:

Form Architects and Engineers

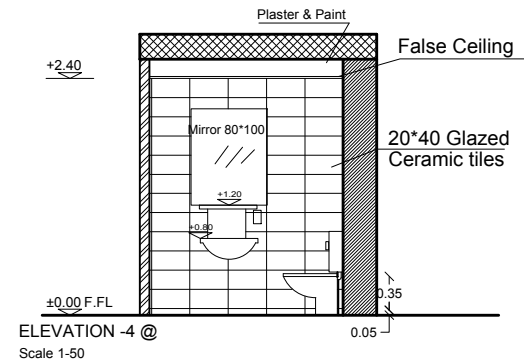
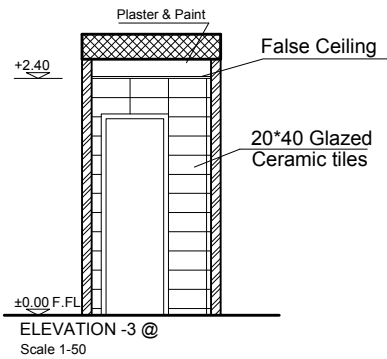
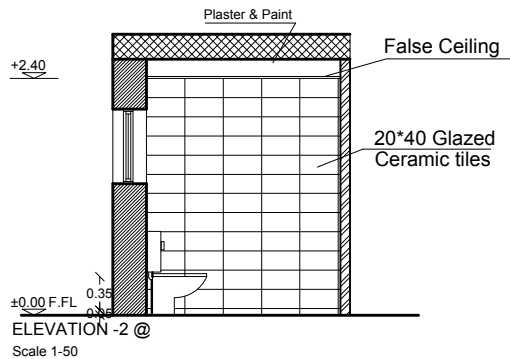
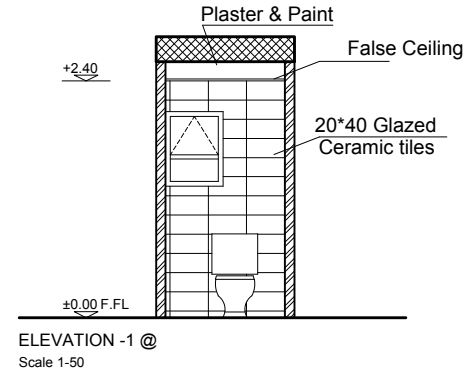
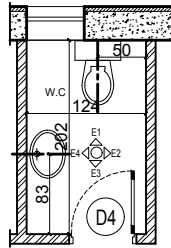
DRAWING TITLE:

Toilet Detail
First Floor

DATE	SCALE	SHEET NUMBER
Sep.,2015		A117

2 Bath Plan

Scale 1/50



Notes

- All Dimensions are in cm.

date of revision	initials	revision details

PROJECT NAME

Family and Juvenile
protection unit
(FJPU)
Ramallah

PRODUCED BY:

DESIGNED BY:



Form Architects and Engineers

DRAWING TITLE:

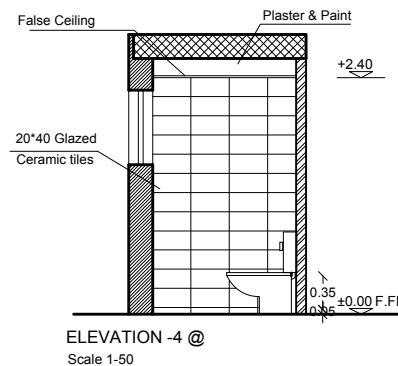
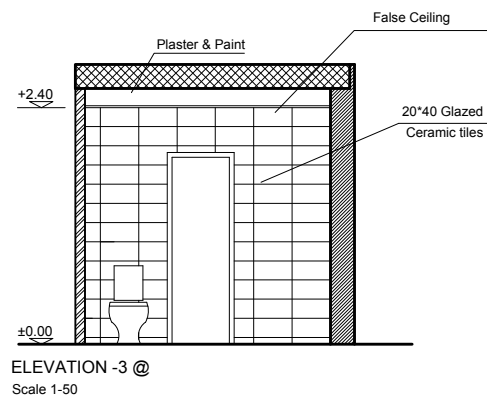
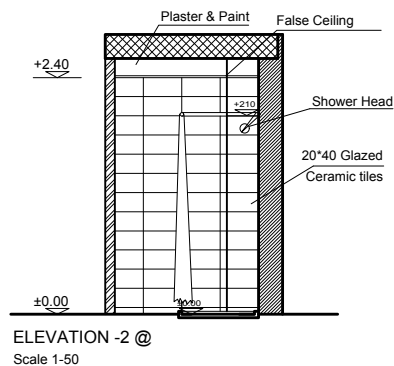
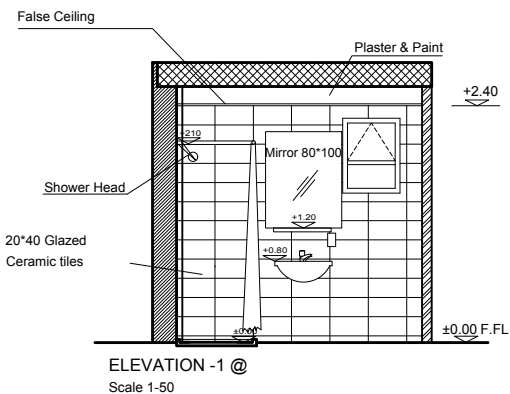
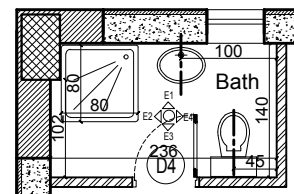
Toilet Detail
First Floor

DATE	SCALE	SHEET NUMBER
Sep.,2015		A118

3

Bath Plan

Scale 1/50



Notes

- All Dimensions are in cm.

date of revision	initials	revision details

PROJECT NAME

Family and Juvenile
protection unit
(FJPU)
Ramallah

PRODUCED BY:

DESIGNED BY:

Form Architects and Engineers

DRAWING TITLE:

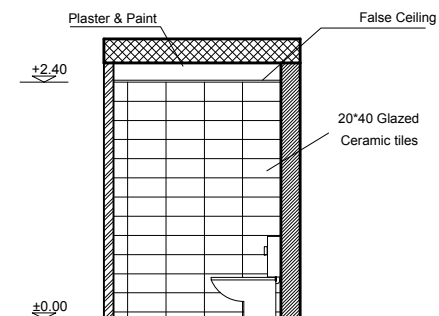
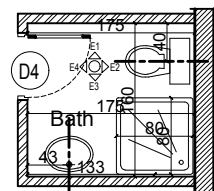
Bath Detail
First Floor

DATE	SCALE	SHEET NUMBER
Sep.,2015		A119

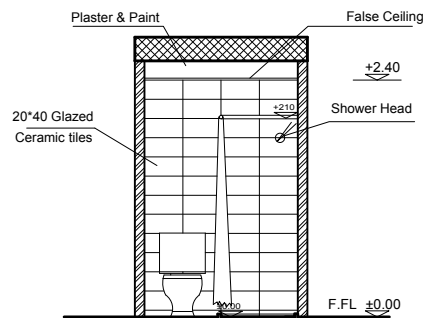
4

Bath Plan

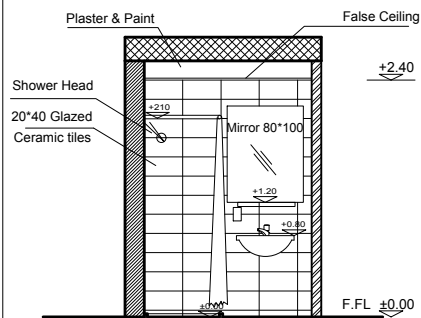
Scale 1/50

**ELEVATION -1 @**

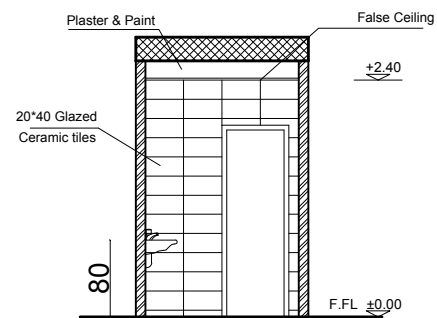
Scale 1-50

**ELEVATION -2 @**

Scale 1-50

**ELEVATION -3 @**

Scale 1-50

**ELEVATION -4 @**

Scale 1-50

Notes

- All Dimensions are in cm.

date of revision	initials	revision details

PROJECT NAME

Family and Juvenile
protection unit
(FJPU)
Ramallah

PRODUCED BY:

DESIGNED BY:

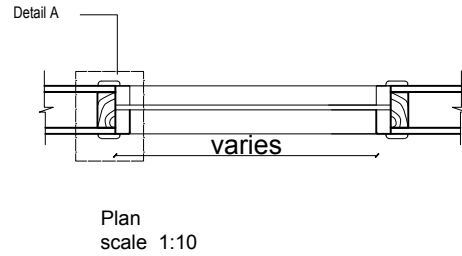
FORM ARCHITECTS AND ENGINEERS

DRAWING TITLE:

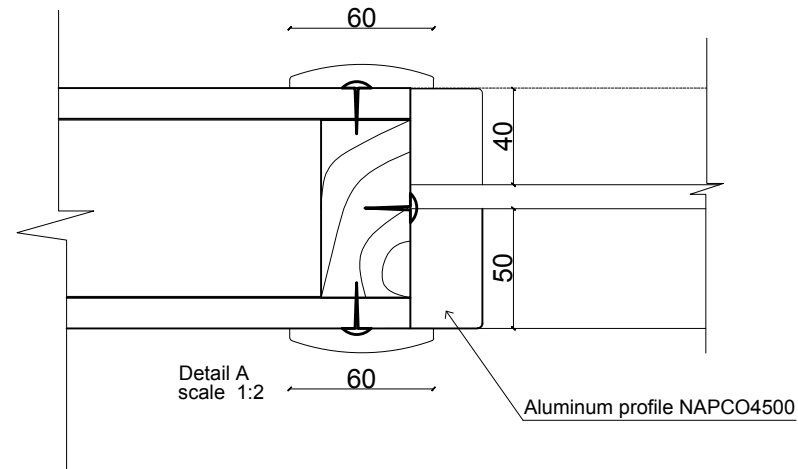
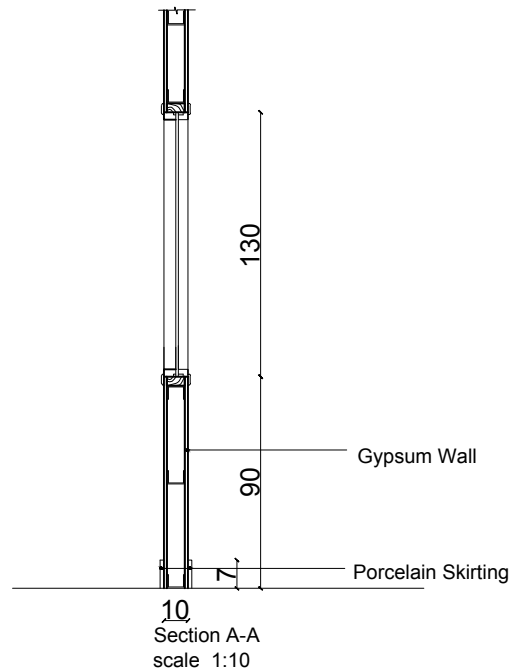
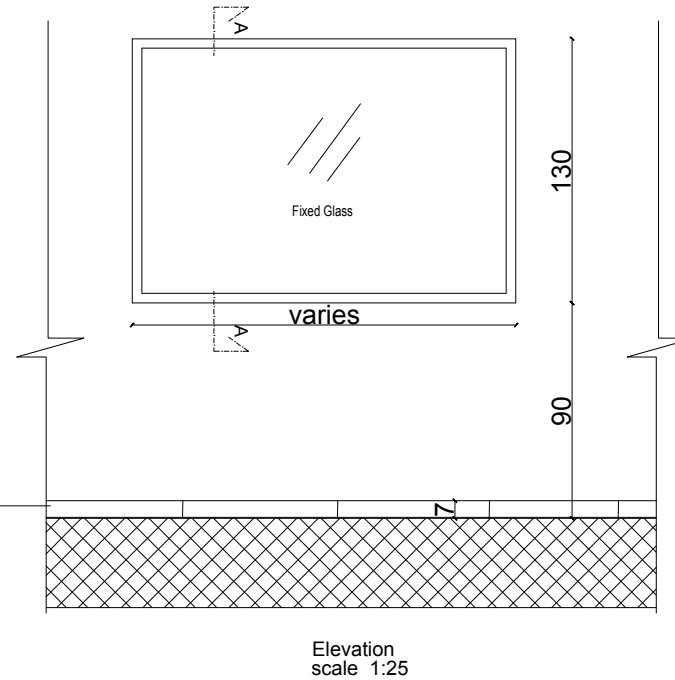
Bath Detail
First Floor

DATE	SCALE	SHEET NUMBER
Sep.,2015		A120

Typical Window Details



Terrazzo Skirting match the existing tiles



Notes

- All Dimensions are in cm.

date of revision	initials	revision details

PROJECT NAME

Family and Juvenile
protection unit
(FJPU)
Ramallah

PRODUCED BY:

DESIGNED BY:

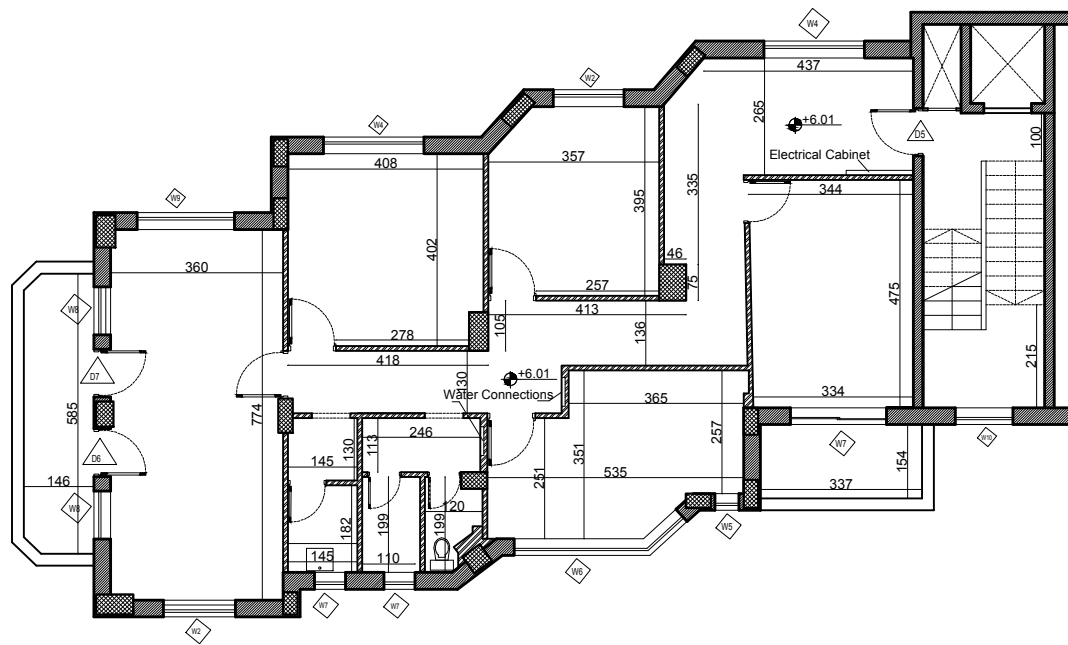
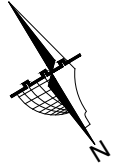


Form Architects and Engineers

DRAWING TITLE:

Securest Detail
First Floor

DATE	SCALE	SHEET NUMBER
Sep.,2015		A121



Notes

- All Dimensions are in cm.

- Existing Walls
- Hollow Blocks
- Gypsum Walls
- Concrete
- Stone
- Reinforced Concrete

date of revision	initials	revision details



PROJECT NAME

Family and Juvenile
protection unit
(FJPU)
Ramallah

PRODUCED BY:

DESIGNED BY:

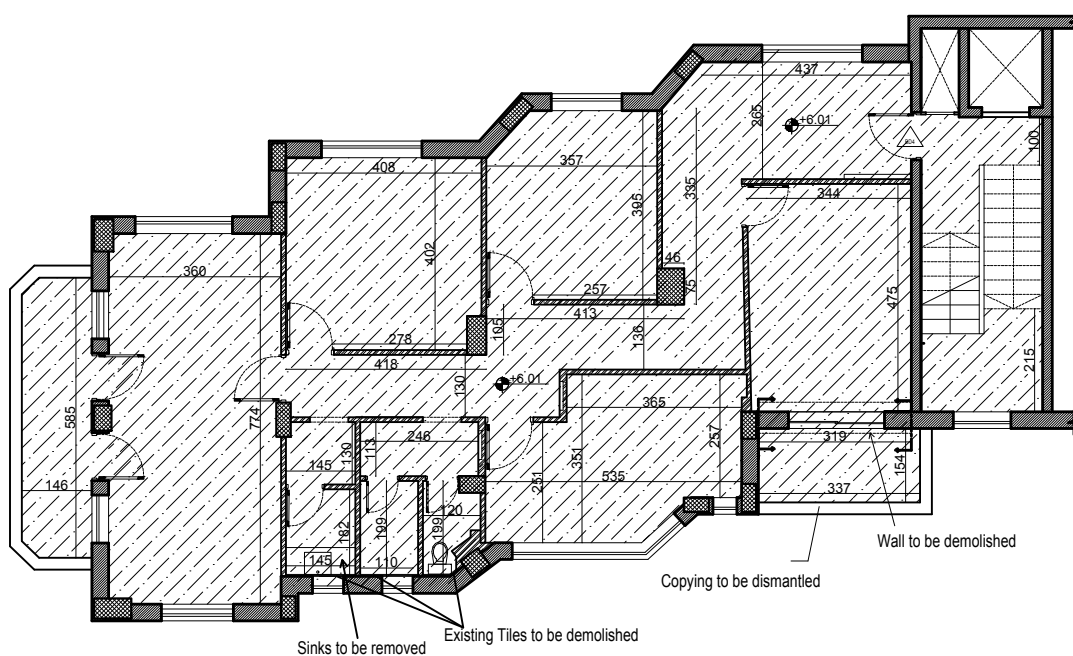


Form Architects and Engineers




DRAWING TITLE:

As Built Drawing
Second Floor

DATE	SCALE	SHEET NUMBER
Sep.,2015	1-100	A201



- All Dimensions are in cm.

-  Hollow Blocks
to be demolished
 Floor tiles to be
removed at the internal
floor
 Gypsum Walls
to be demolished

* All Waste materials to be removed to approved dump location.

* All Doors and windows to be dismantled and stored as instructed by the engineer.

* the site should be prepared for the new installations

[illegible]

Family and Juvenile
protection unit
(FJPU)
Ramallah

PRODUCED BY:	
--------------	--

DESIGNED BY:

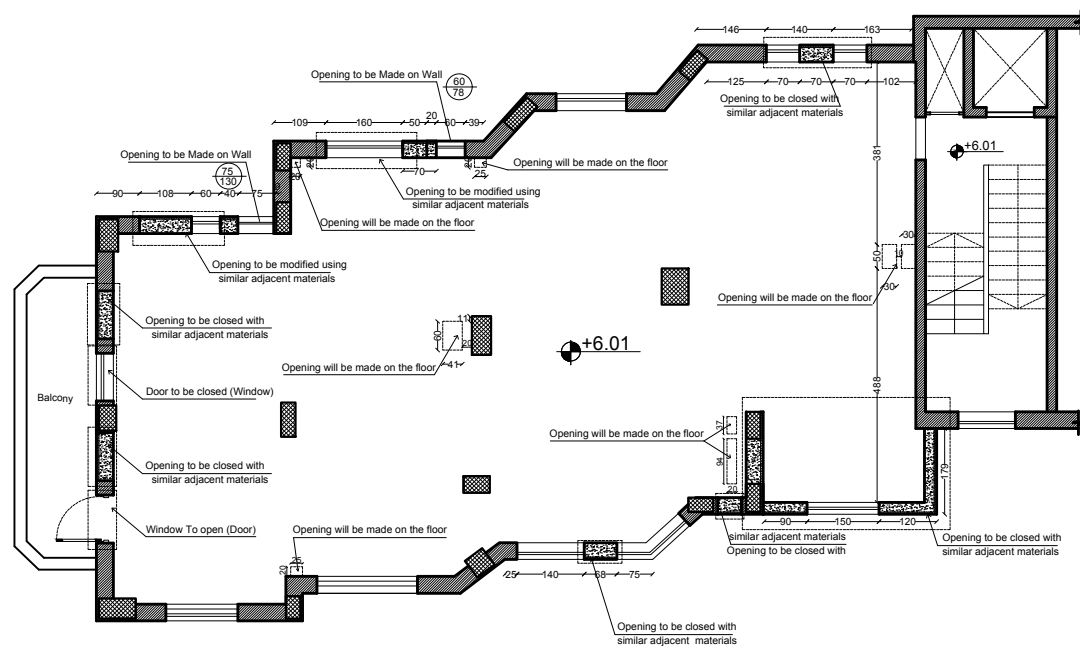


Form Architects and Engineers







DRAWING TITLE:

Demolish Plan
Second Floor

DATE	SCALE	SHEET NUMBER
Sep.,2015	1-100	A202



- All Dimensions are in cm.

-  Existing Walls
 Hollow Blocks
 Gypsum Walls
 Concrete
 Stone
 Reinforced Concrete

Procedure before opening ducts:

- Before opening the ducts the contractor must remove the plaster at the location of duct.
- The engineer to check the location of the beams
- The engineer to instruct the contractor to open the floors if the beams do not contradict with opening location.
- If any discrepancy found the duct location should be adjusted to a nearest location without any contradiction with beams.

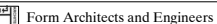
date of revision	initials	revision details



Family and Juvenile
protection unit
(FJPU)
Ramallah

PRODUCED BY:	
--------------	--

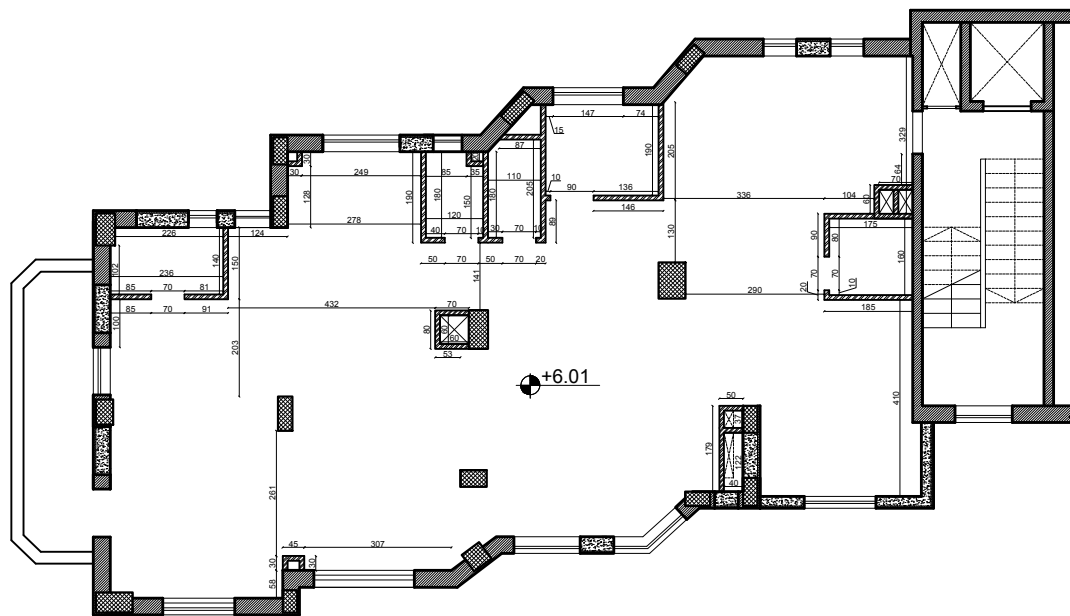
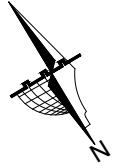
DESIGNED BY:



DRAWING TITLE:

Alteration Plan
Second Floor

DATE	SCALE	SHEET NUMBER
Sep.,2015	1-100	A203



Notes

- All Dimensions are in cm.

- Existing Walls
- Hollow Blocks
- Gypsum Walls
- Concrete
- Stone
- Reinforced Concrete

date of revision	initials	revision details



PROJECT NAME

Family and Juvenile
protection unit
(FJPU)
Ramallah

PRODUCED BY:

DESIGNED BY:

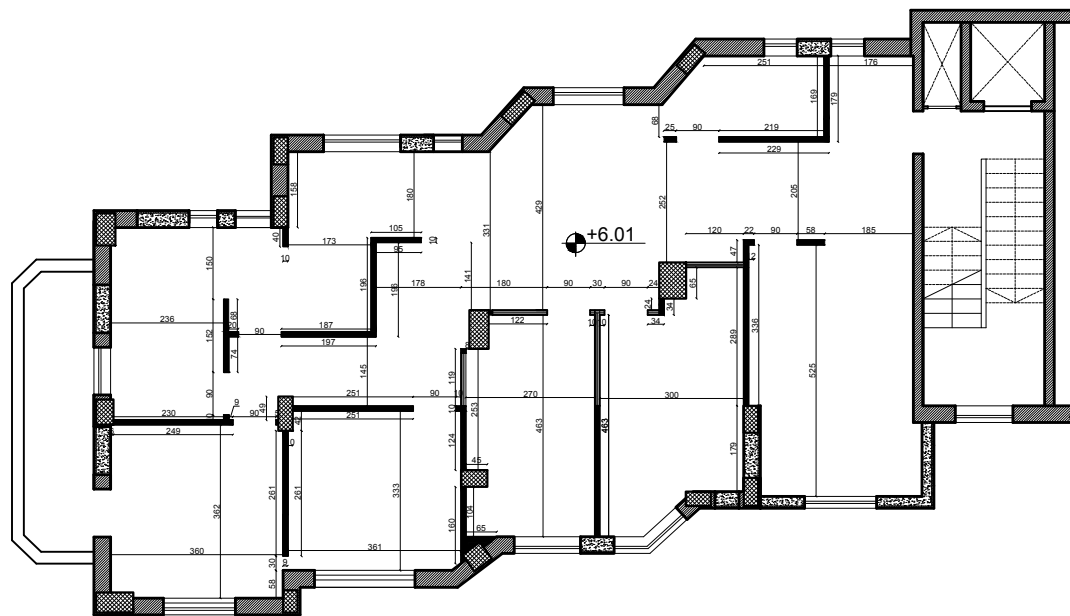
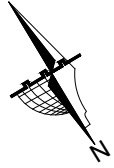


Form Architects and Engineers

DRAWING TITLE:




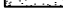


Hollow Block Walls
Second Floor

DATE	SCALE	SHEET NUMBER
Sep.,2015	1-100	A204



Notes

- All Dimensions are in cm.

-  Existing Walls
-  Hollow Blocks
-  Gypsum Walls
-  Concrete
-  Stone
-  Reinforced Concrete

date of revision	initials	revision details



PROJECT NAME

Family and Juvenile
protection unit
(FJU)
Ramallah

PRODUCED BY:

DESIGNED BY:

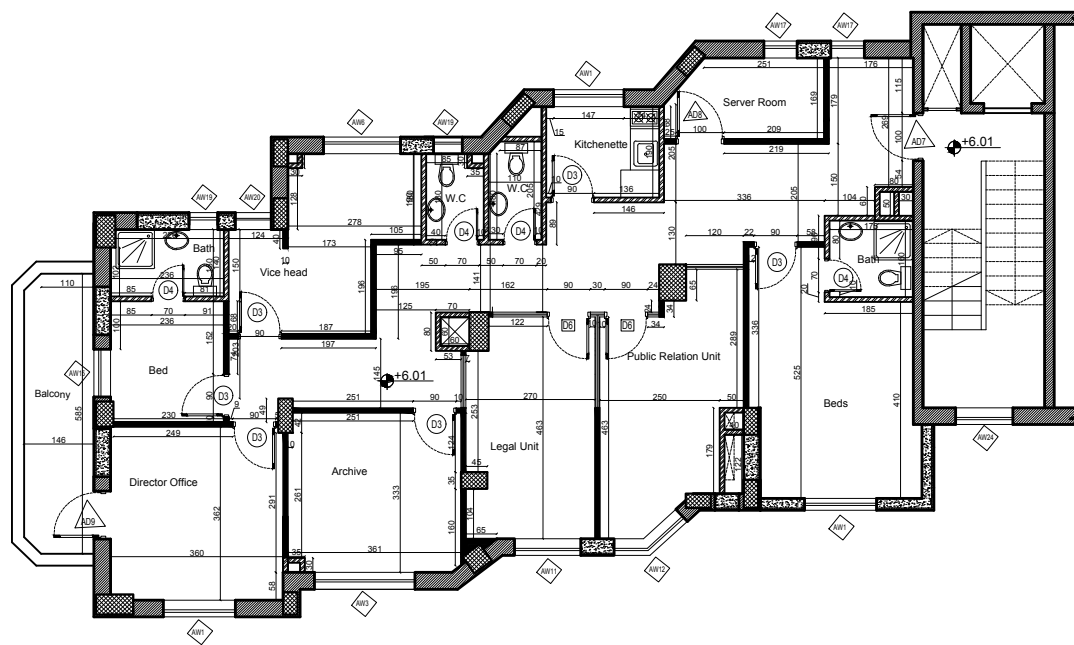
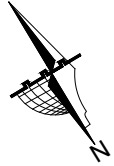


Form Architects and Engineers

DRAWING TITLE:




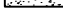


Gypsum Partitions
Second Floor

DATE	SCALE	SHEET NUMBER
Sep.,2015	1-100	A205




Notes

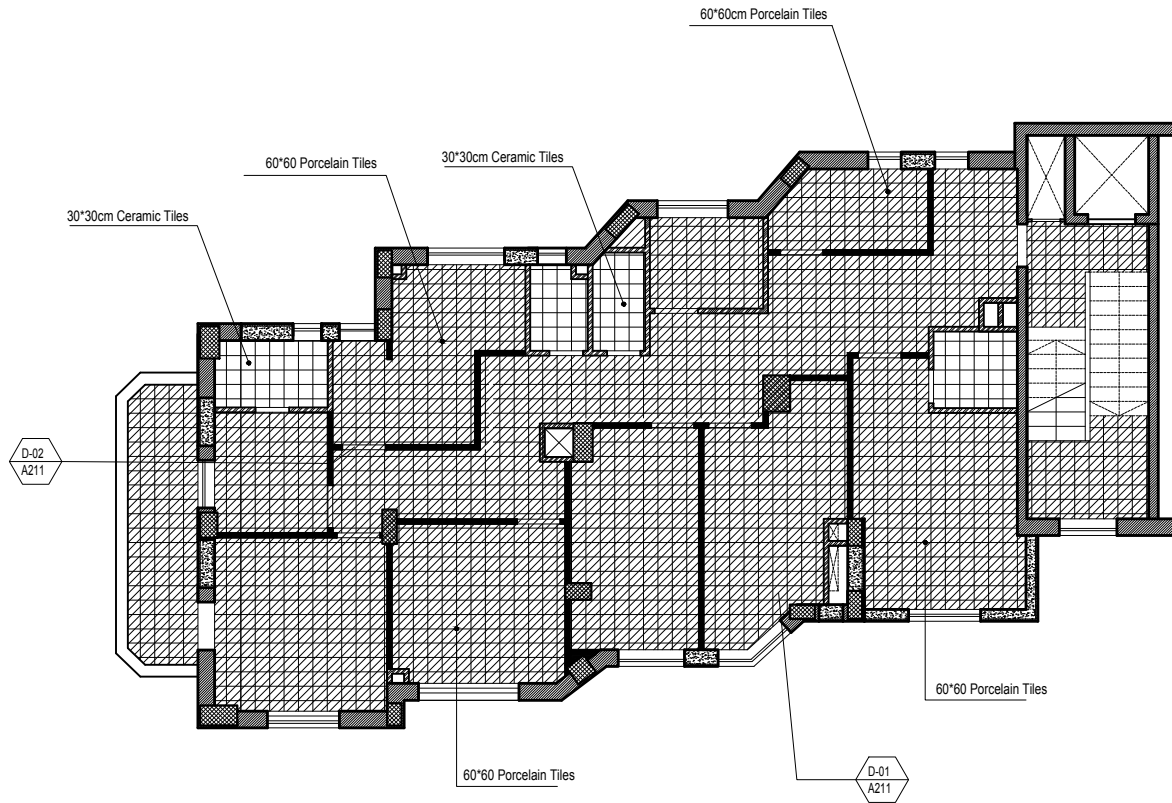
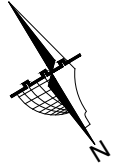
- All Dimensions are in cm.

-  Existing Walls
-  Hollow Blocks
-  Gypsum Walls
-  Concrete
-  Stone
-  Reinforced Concrete

date of revision	initials	revision details



PROJECT NAME		
Family and Juvenile protection unit (FJPU) Ramallah		
PRODUCED BY:		
DESIGNED BY:		
 Form Architects and Engineers		
DRAWING TITLE:		
Dimension Plan Second Floor		
DATE	SCALE	SHEET NUMBER
Sep.,2015	1-100	A206



Notes

- All Dimensions are in cm.

	Existing Walls
	Hollow Blocks
	Gypsum Walls
	Concrete
	Stone
	Reinforced Concrete
	Terrazzo Tiles
	Ceramic Tiles

date of revision	initials	revision details



PROJECT NAME

Family and Juvenile
protection unit
(FJPU)
Ramallah

PRODUCED BY:

DESIGNED BY:

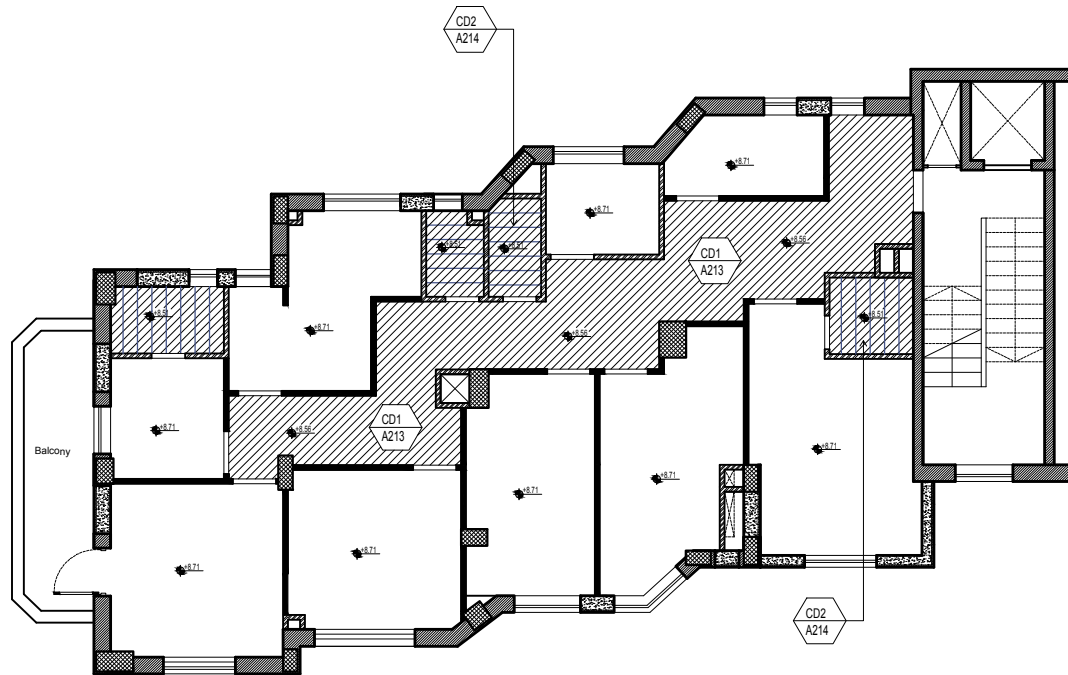
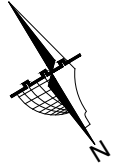


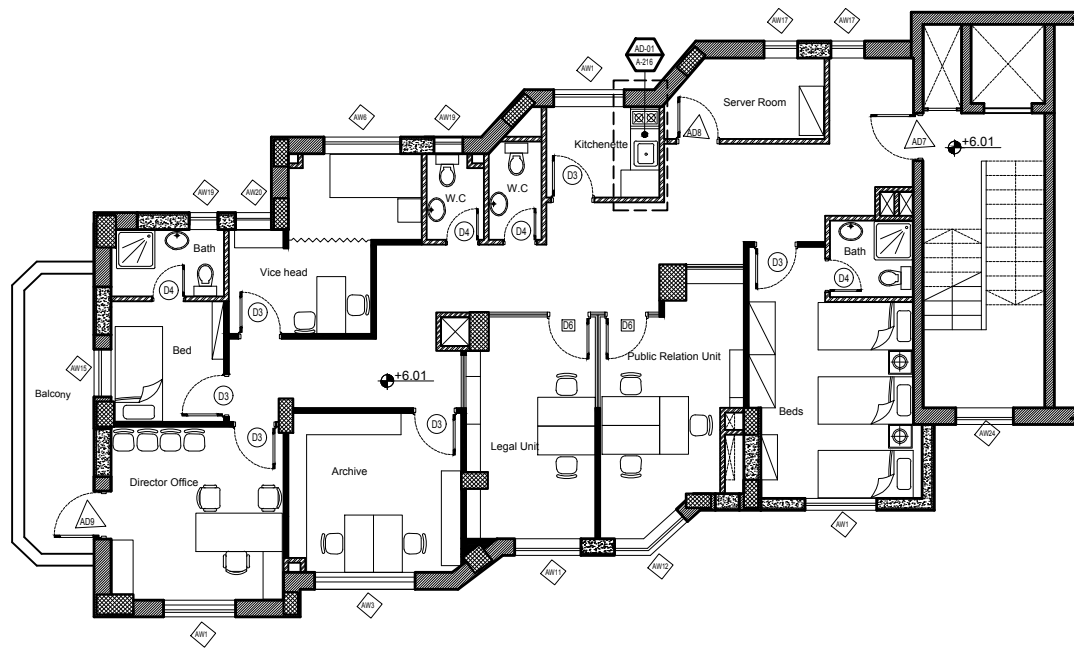
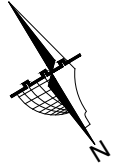
Form Architects and Engineers

DRAWING TITLE:

Tiling Plan
Second Floor

DATE	SCALE	SHEET NUMBER
Sep.,2015	1-100	A207





Notes

- All Dimensions are in cm.

date of revision	initials	revision details

PROJECT NAME

Family and Juvenile
protection unit
(FJPU)
Ramallah

PRODUCED BY:

DESIGNED BY:



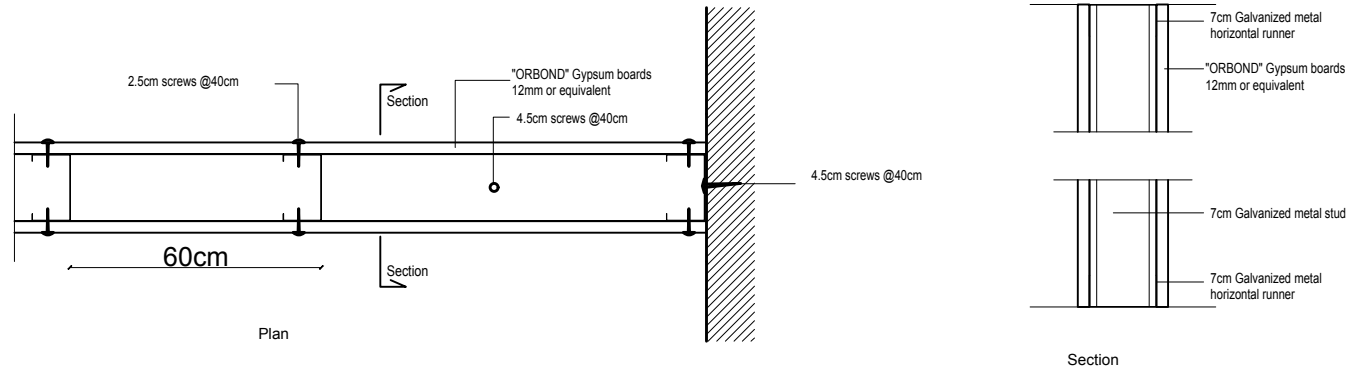
Form Architects and Engineers

DRAWING TITLE:

Furniture Layout
Second Floor




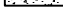


DATE	SCALE	SHEET NUMBER
Sep.,2015	1-100	A209

Detail -1
Typical Details for Gypsum Board Partitions



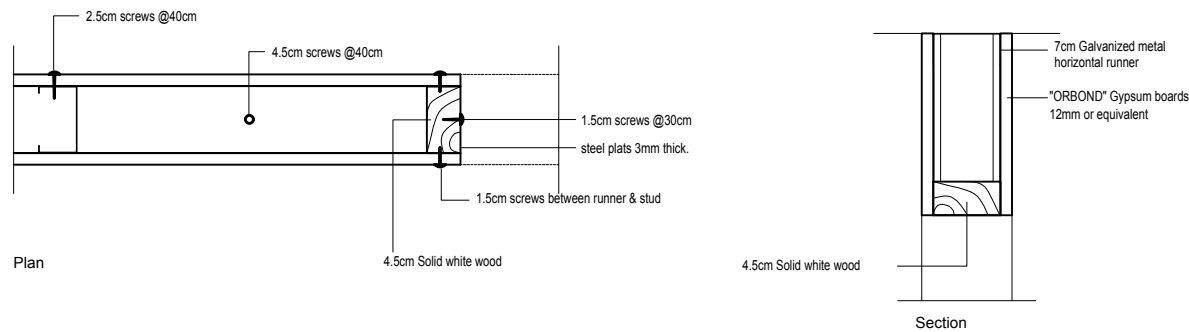
Notes

- All Dimensions are in cm.

-  Existing Walls
-  Hollow Blocks
-  Gypsum Walls
-  Concrete
-  Stone
-  Reinforced Concrete

date of revision	initials	revision details

Detail -2
Typical Details for Gypsum Board Partitions @ Wooden Doors or Windows

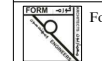


PROJECT NAME

Family and Juvenile
protection unit
(FJPU)
Ramallah

PRODUCED BY:

DESIGNED BY:

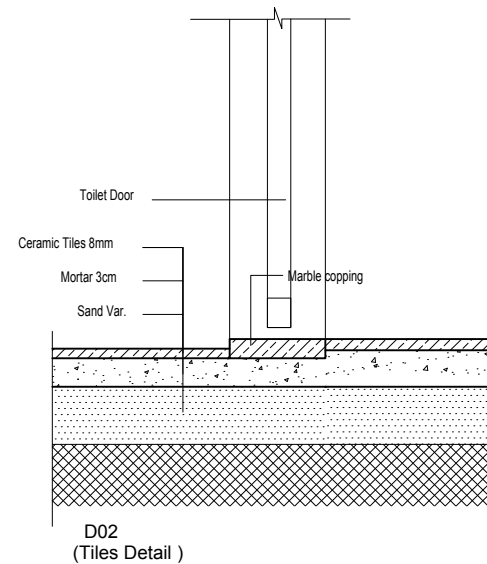
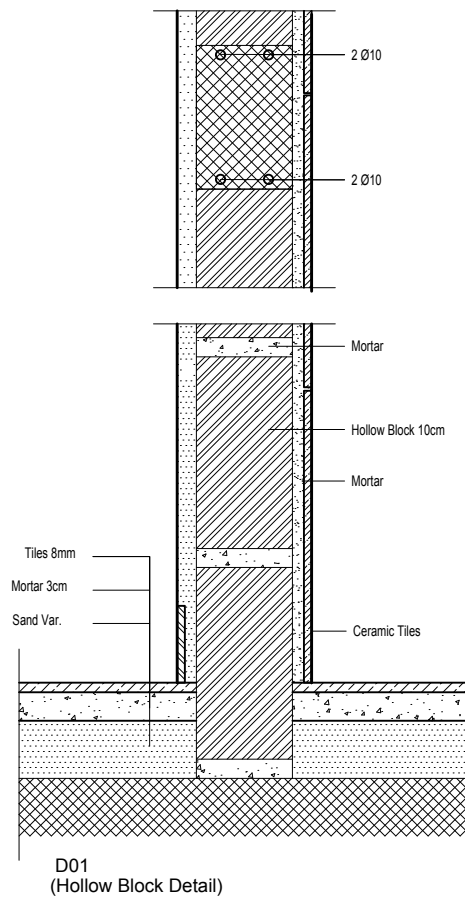


Form Architects and Engineers

DRAWING TITLE:

Gypsum Partitions Details
Second Floor

DATE	SCALE	SHEET NUMBER
Sep.,2015		A210



Notes

- All Dimensions are in cm.

	Existing Walls
	Hollow Blocks
	Gypsum Walls
	Concrete
	Stone
	Reinforced Concrete

date of revision	initials	revision details

PROJECT NAME

Family and Juvenile
protection unit
(FJPU)
Ramallah

PRODUCED BY:

DESIGNED BY:



Form Architects and Engineers

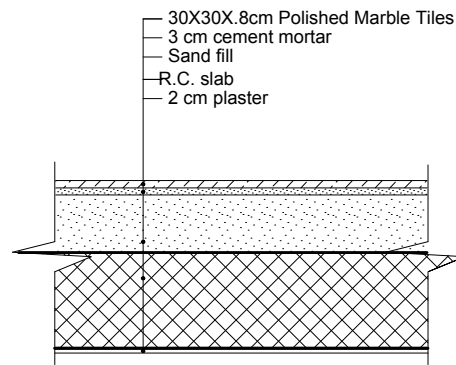
DRAWING TITLE:

Tiling Details
Second Floor

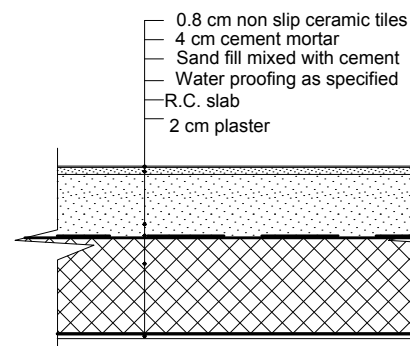
DATE	SCALE	SHEET NUMBER
Sep.,2015	----	A211

Notes

- All Dimensions are in cm.



1 Typical Detail for Porcelain Tiling Floor Finish
All Scale 1/20



3 Typical Detail for Ceramic Tiling Floor Finish at Baths (Wet areas)
All Scale 1/20

date of revision	initials	revision details

PROJECT NAME

Family and Juvenile
protection unit
(FJPU)
Ramallah

PRODUCED BY:



DESIGNED BY:



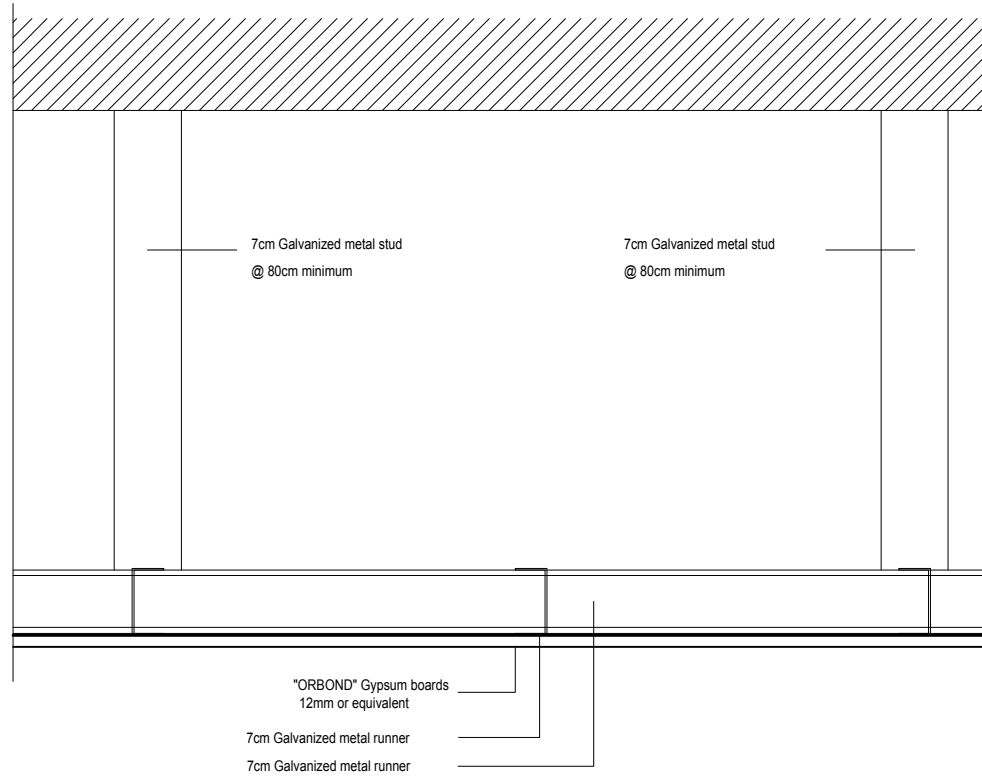
Form Architects and Engineers

DRAWING TITLE:

Tiling Details

Second Plan

DATE	SCALE	SHEET NUMBER
Sep.,2015	1-20	A 212



Notes

- All Dimensions are in cm.

	Existing Walls
	Hollow Blocks
	Gypsum Walls
	Concrete
	Stone
	Reinforced Concrete

date of revision	initials	revision details

PROJECT NAME

Family and Juvenile
protection unit
(FJPU)
Ramallah

PRODUCED BY:

DESIGNED BY:

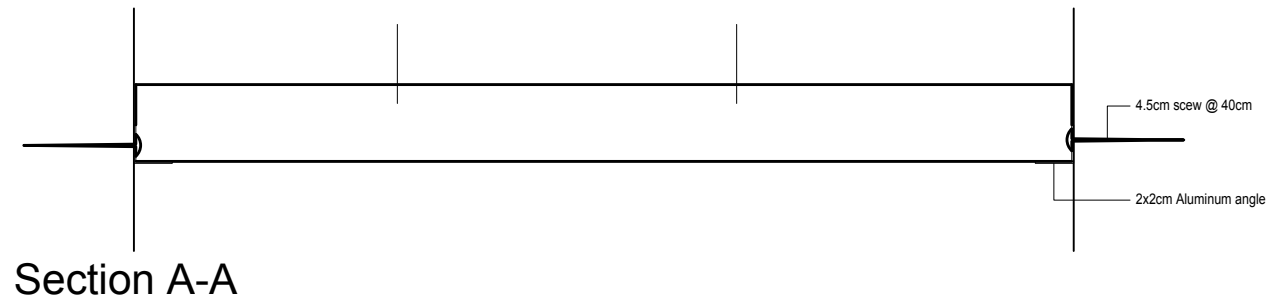
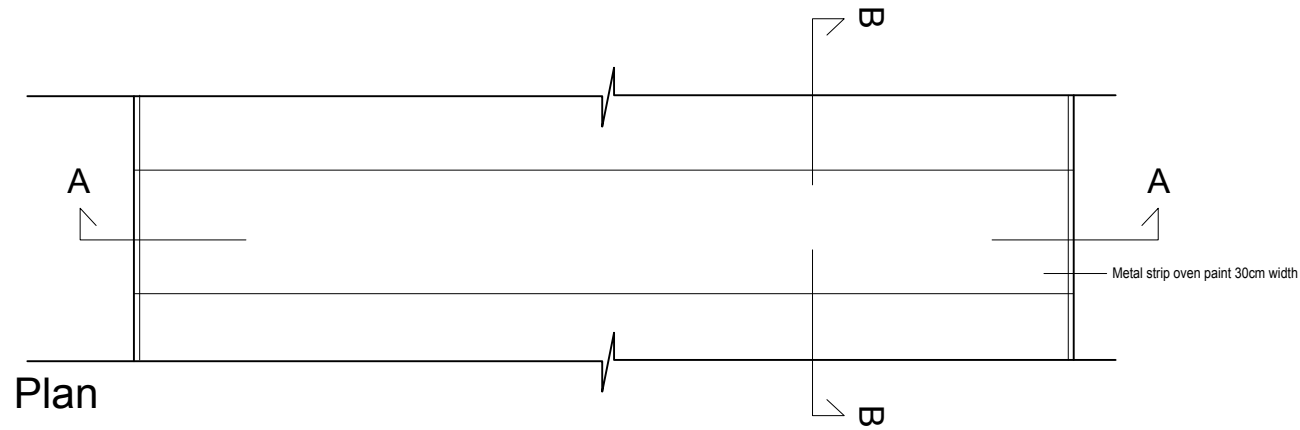


Form Architects and Engineers

DRAWING TITLE:

CD1
Second Floor

DATE	SCALE	SHEET NUMBER
Sep.,2015		A213



Notes

- All Dimensions are in cm.

date of revision	initials	revision details

PROJECT NAME

Family and Juvenile
protection unit
(FJPU)
Ramallah

PRODUCED BY:

DESIGNED BY:

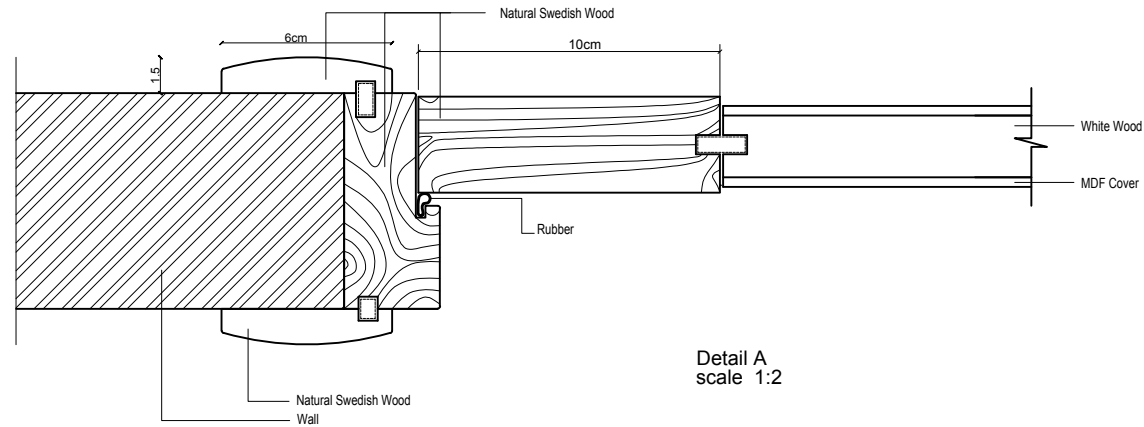
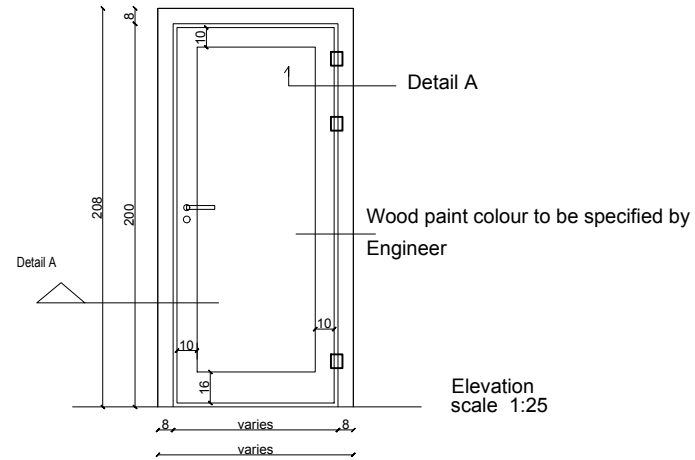
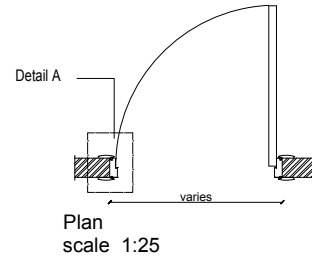


Form Architects and Engineers

DRAWING TITLE:

CD2
Second Floor

DATE	SCALE	SHEET NUMBER
Sep.,2015		A214



Notes

- All Dimensions are in cm.

- ① Natural Swedish wood.
- ② 16mm Sandwich wood.
- ③ 16mm Sandwich covered with 1mm natural Swedish wood crust.
- ④ 16mm Sandwich covered with 1mm Matt Stainless steel (Melotage).
- ⑤ Natural white wood
- ⑥ 10mm Tempered clear glass.
- ⑦ 2cm Granite (Absolute).
- ⑧ 2cm Stone (Tafoh stone).
- ⑨ Bricks.
- ⑩ 6mm MDF covered with Swedish wood crust.

date of revision	initials	revision details

PROJECT NAME

Family and Juvenile
protection unit
(FJPU)
Ramallah

PRODUCED BY:

DESIGNED BY:



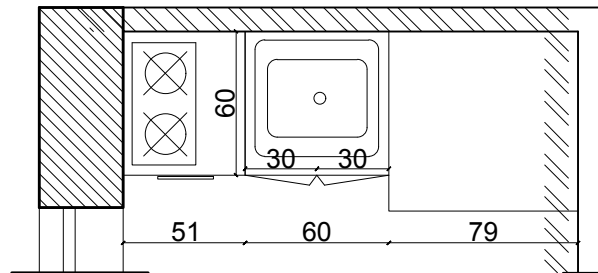
Form Architects and Engineers

DRAWING TITLE:

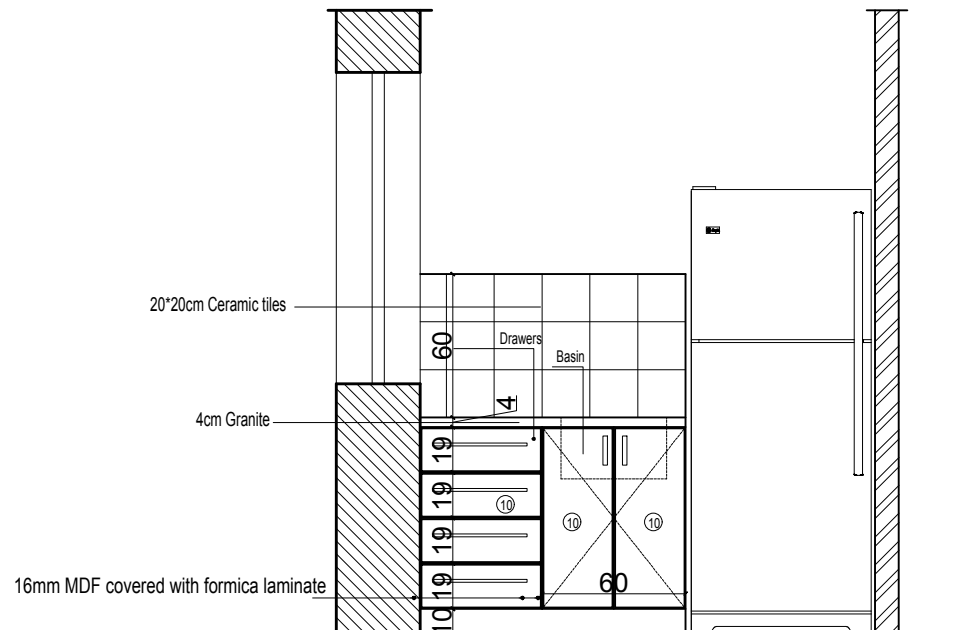
Door Detail
Second Floor

DATE	SCALE	SHEET NUMBER
Sep.,2015		A215

Plan
scale 1:20



Elevation 1



Elevation 1
scale 1:20

Notes

- All Dimensions are in cm.

- ① Natural Swedish wood.
- ② 16mm Sandwich wood.
- ③ 16mm Sandwich covered with 1mm natural Swedish wood crust.
- ④ 16mm Sandwich covered with 1mm Matt Stainless steel (Melotage).
- ⑤ Natural white wood
- ⑥ 10mm Tempered clear glass.
- ⑦ 2cm Granite (Absolute).
- ⑧ 2cm Stone (Tafoh stone).
- ⑨ Bricks.
- ⑩ 6mm MDF covered with Formica laminat

date of revision	initials	revision details

PROJECT NAME

Family and Juvenile
protection unit
(FJPU)
Ramallah

PRODUCED BY:

DESIGNED BY:



Form Architects and Engineers

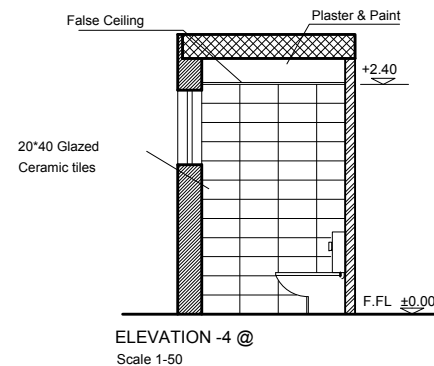
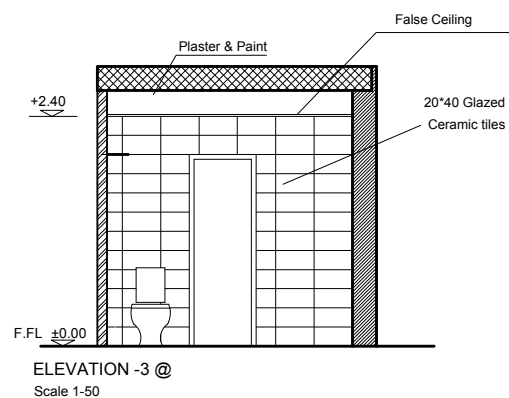
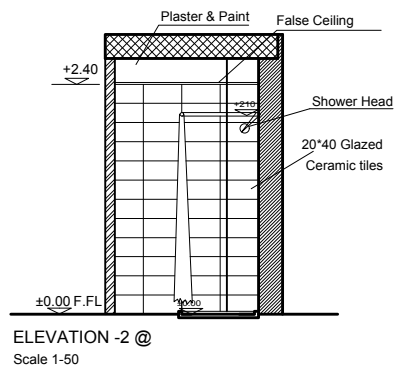
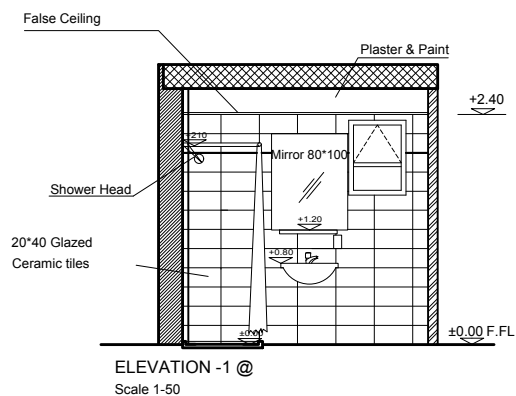
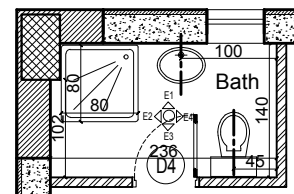
DRAWING TITLE:

Kitchenette Detail
(AD - 01)
Second Floor

DATE	SCALE	SHEET NUMBER
Sep.,2015		A216

3 Bath Plan

Scale 1/50



Notes

- All Dimensions are in cm.

date of revision	initials	revision details

PROJECT NAME

Family and Juvenile
protection unit
(FJPU)
Ramallah

PRODUCED BY:

DESIGNED BY:

Form Architects and Engineers

DRAWING TITLE:

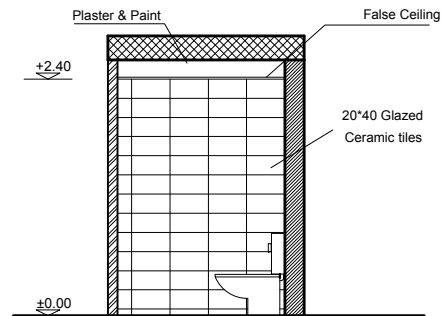
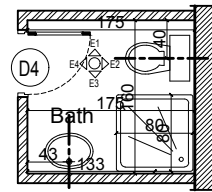
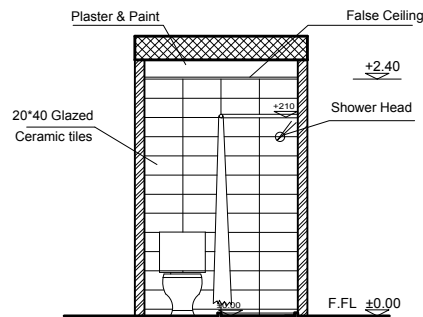
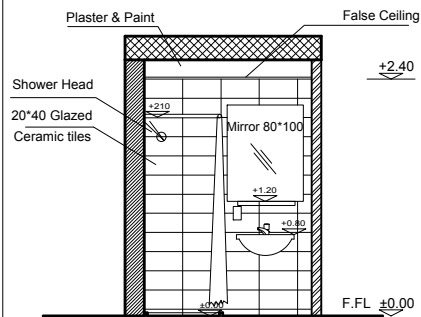
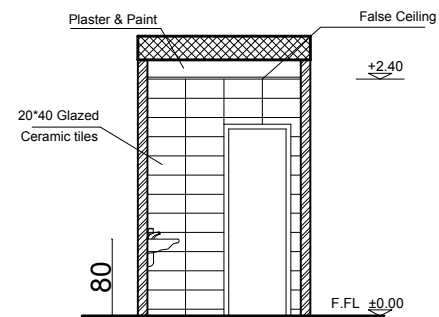
Bath Detail
Second Floor Plan

DATE	SCALE	SHEET NUMBER
Sep.,2015		A217

2

Bath Plan

Scale 1/50

ELEVATION -1 @
Scale 1-50ELEVATION -2 @
Scale 1-50ELEVATION -3 @
Scale 1-50ELEVATION -4 @
Scale 1-50

Notes

- All Dimensions are in cm.

date of revision	initials	revision details

PROJECT NAME

Family and Juvenile
protection unit
(FJPU)
Ramallah

PRODUCED BY:

DESIGNED BY:



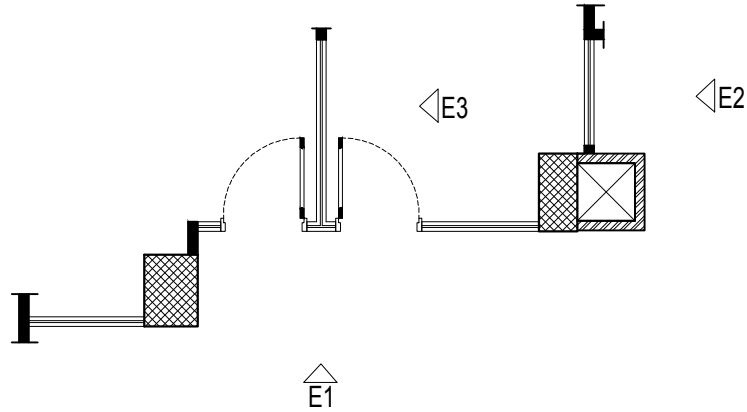
Form Architects and Engineers

DRAWING TITLE:

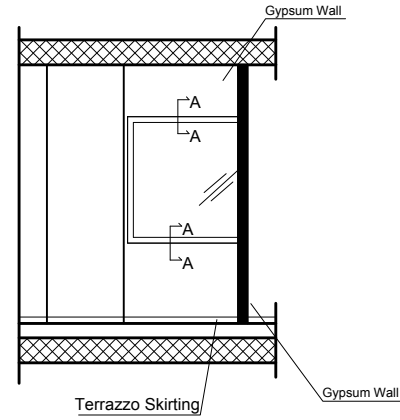
Bath Detail
First Floor

DATE	SCALE	SHEET NUMBER
Sep.,2015		A218

Plan / A213



E2 / A213

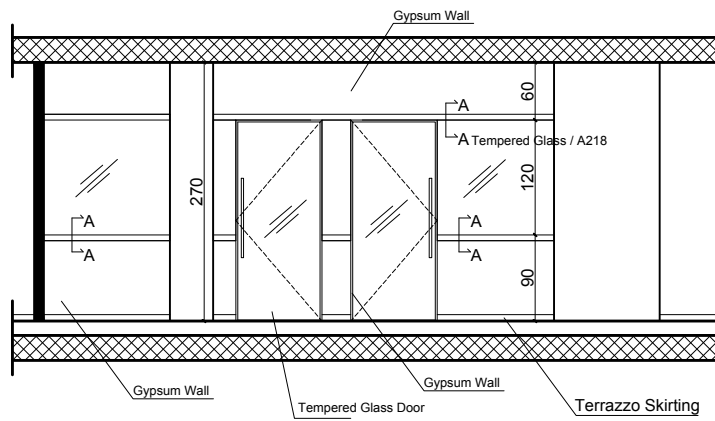


Notes

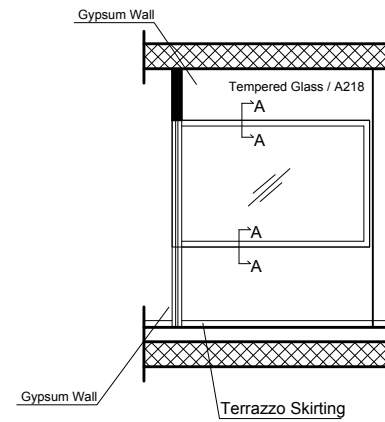
- All Dimensions are in cm.

date of revision	initials	revision details

E1 / A213



E3 / A213



PROJECT NAME

Family and Juvenile
protection unit
(FJPU)
Ramallah

PRODUCED BY:

DESIGNED BY:

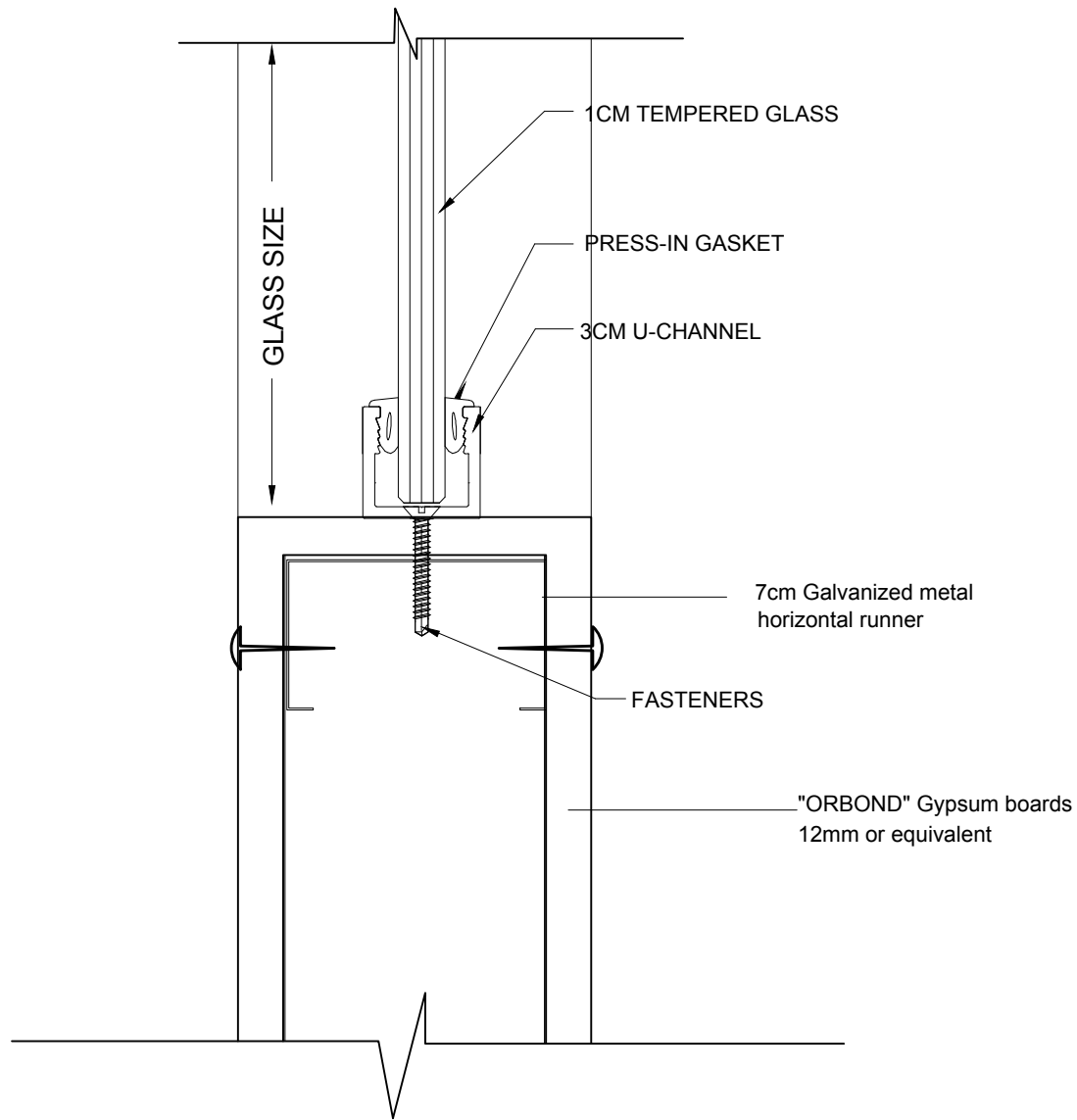


Form Architects and Engineers

DRAWING TITLE:

Internal Elevations
Second Plan

DATE	SCALE	SHEET NUMBER
Sep.,2015	1-50	A219



Section A-A

Notes

- All Dimensions are in cm.

date of revision	initials	revision details

PROJECT NAME

Family and Juvenile
protection unit
(FJPU)
Ramallah

PRODUCED BY:

DESIGNED BY:

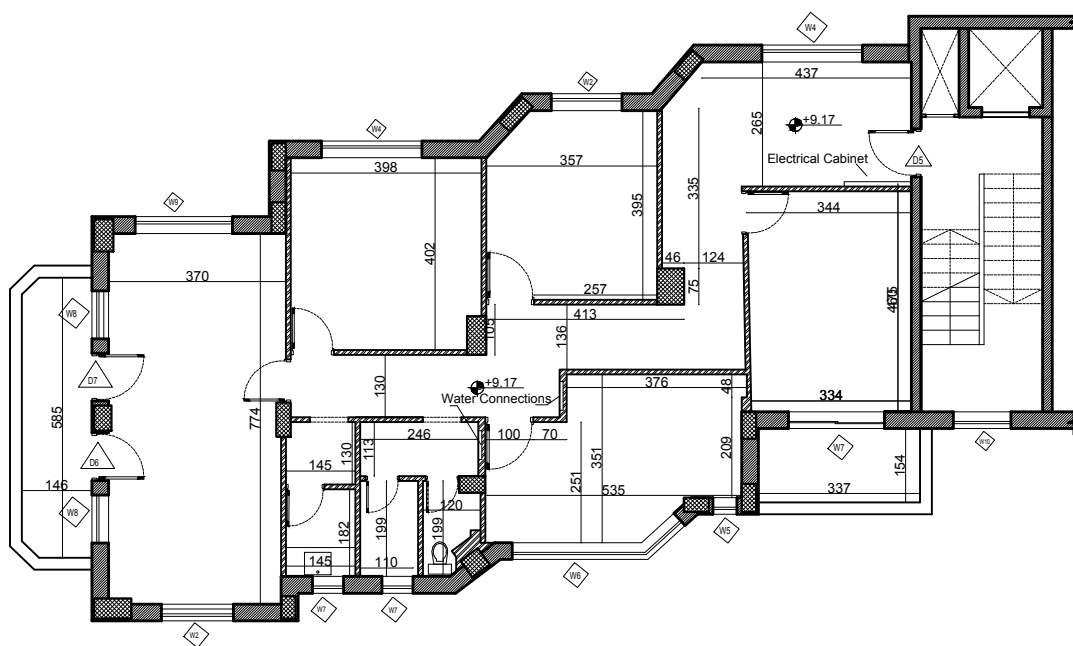


Form Architects and Engineers







DRAWING TITLE:

Tempered Glass Detail
Second Plan

DATE	SCALE	SHEET NUMBER
Sep.,2015	1-25	A220



- All Dimensions are in cm.

-  Existing Walls
 Hollow Blocks
 Gypsum Walls
 Concrete
 Stone
 Reinforced Concrete

[illegible]

	PROJECT NAME
--	--------------

Family and Juvenile
protection unit
(FJPU)
Ramallah

PRODUCED BY:	
--------------	--

DESIGNED BY:

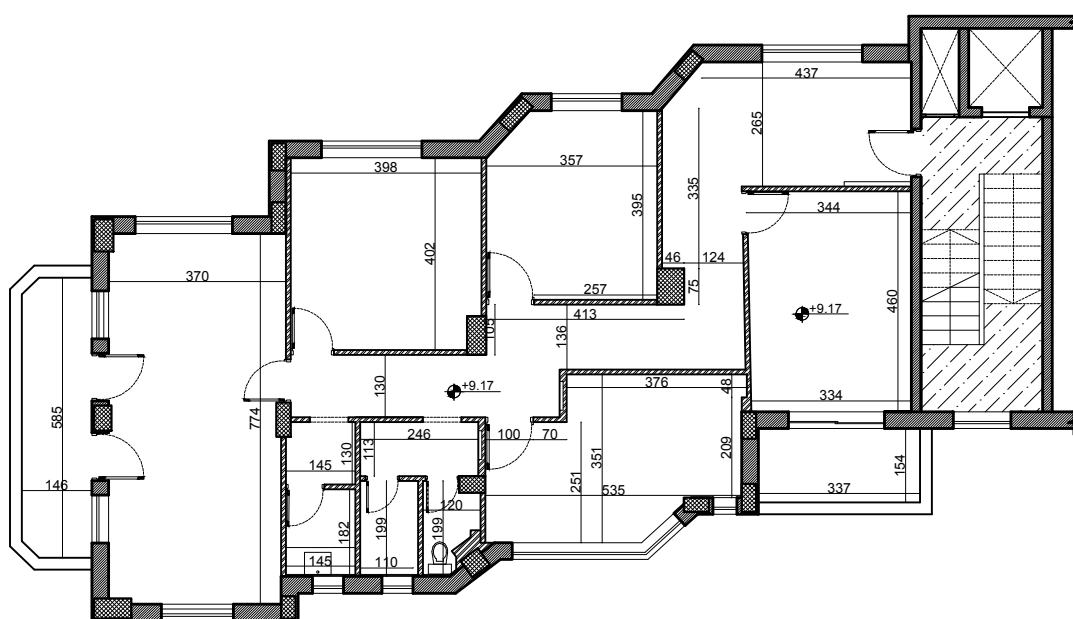


Form Architects and Engineers




DRAWING TITLE:

As Built Drawing
Third Floor

DATE	SCALE	SHEET NUMBER
Sep.,2015	1-100	A301



- All Dimensions are in cm.

-  Hollow Blocks
to be demolished
 Floor tiles to be
removed at the internal
floor
 Gypsum Walls
to be demolished

* All Waste materials to be removed to approved dump location.

* All Doors and windows to be dismantled and stored as instructed by the engineer.

* the site should be prepared for the new installations

[illegible]

Family and Juvenile
protection unit
(FJPU)
Ramallah

PRODUCED BY:	
--------------	--

DESIGNED BY:

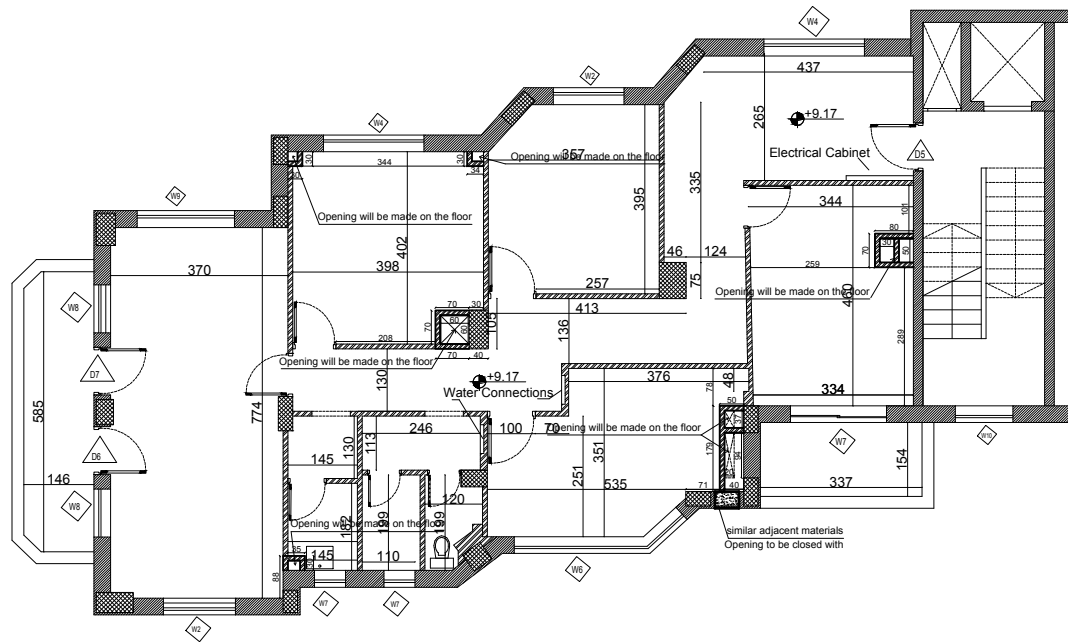
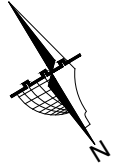


Form Architects and Engineers

DRAWING TITLE:

Demolish Plan Third Floor

DATE	SCALE	SHEET NUMBER
Sep.,2015	1-100	A302



Notes

- All Dimensions are in cm.

- Existing Walls
- Hollow Blocks
- Gypsum Walls
- Concrete
- Stone
- Reinforced Concrete

Procedure before opening ducts:

- Before opening the ducts the contractor must remove the plaster at the location of duct.
- The engineer to check the location of the beams
- The engineer to instruct the contractor to open the floors if the beams do not contradict with opening location.
- If any discrepancy found the duct location should be adjusted to a nearest location without any contradiction with beams.

date of revision	notes	revision details



PROJECT NAME

Family and Juvenile
protection unit
(FJPU)
Ramallah

PRODUCED BY:

DESIGNED BY:

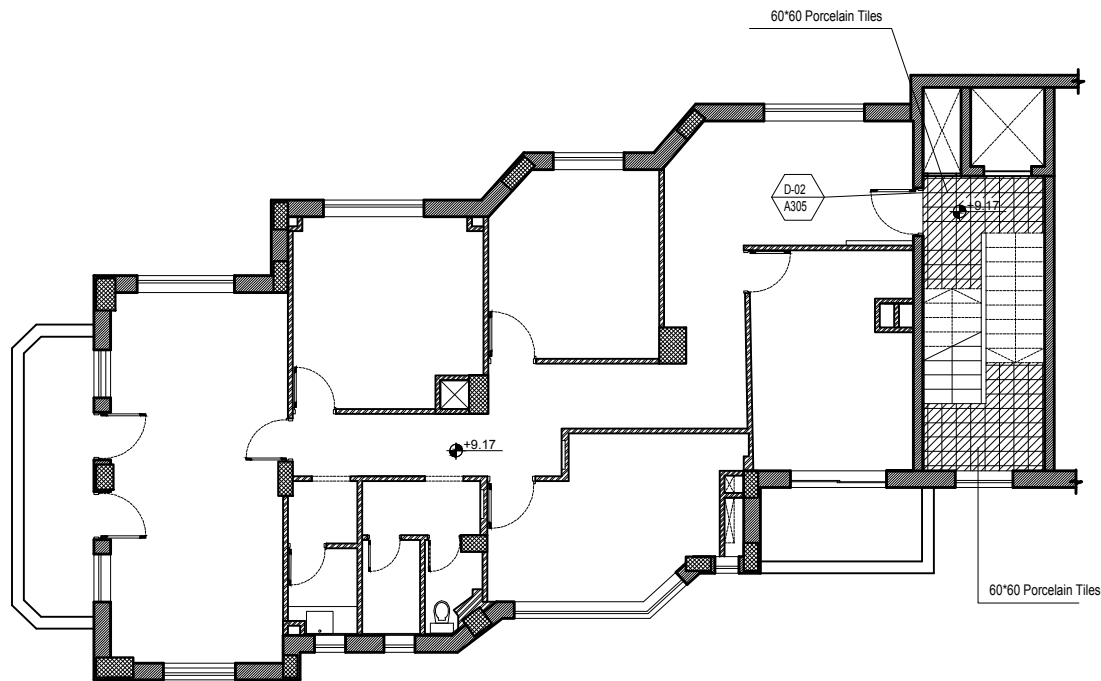
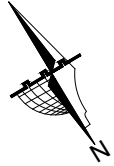


Form Architects and Engineers

DRAWING TITLE:

Alteration Plan
Third Floor

DATE	SCALE	SHEET NUMBER
Sep.,2015	1-100	A303



Notes

- All Dimensions are in cm.

	Existing Walls
	Hollow Blocks
	Gypsum Walls
	Concrete
	Stone
	Reinforced Concrete
	Terrazzo Tiles
	Ceramic Tiles

date of revision	initials	revision details



PROJECT NAME

Family and Juvenile
protection unit
(FJPU)
Ramallah

PRODUCED BY:

DESIGNED BY:

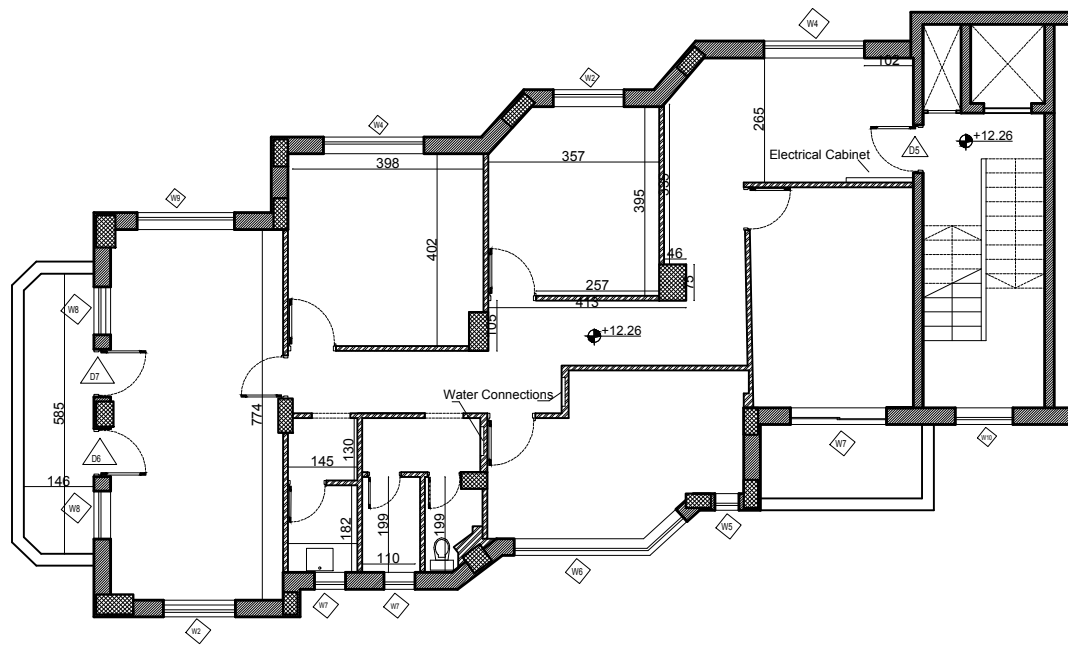
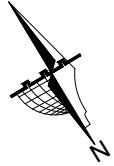


Form Architects and Engineers

DRAWING TITLE:







Tiling Plan
Third Floor

DATE	SCALE	SHEET NUMBER
Sep.,2015	1-100	A304



Notes

- All Dimensions are in cm.

-  Existing Walls
-  Hollow Blocks
-  Gypsum Walls
-  Concrete
-  Stone
-  Reinforced Concrete

date of revision	initials	revision details



PROJECT NAME

Family and Juvenile
protection unit
(FJPU)
Ramallah

PRODUCED BY:

DESIGNED BY:

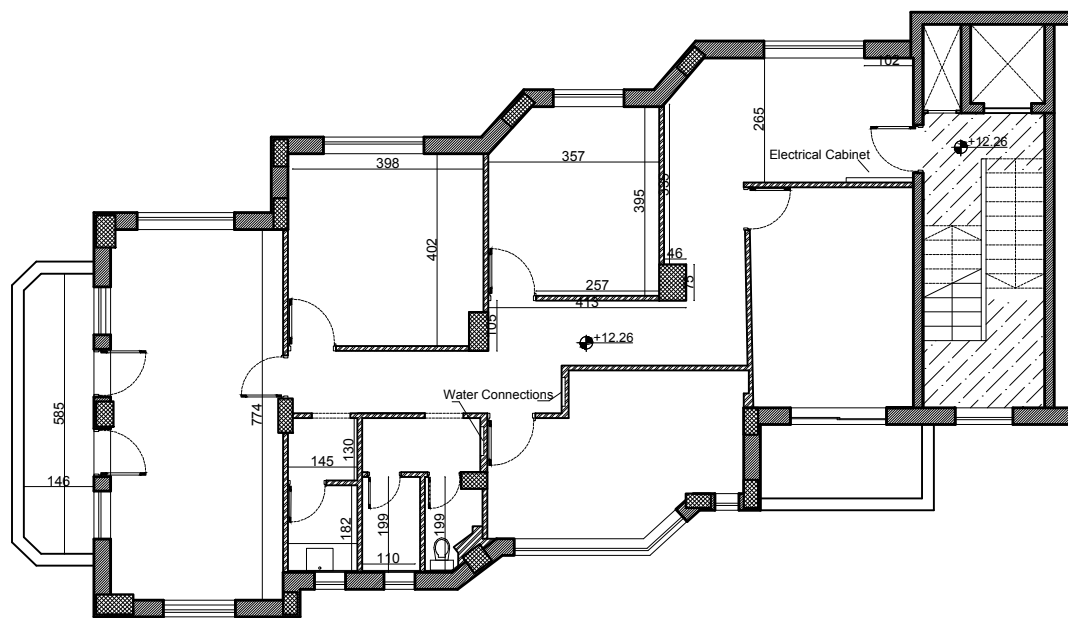
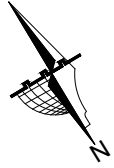


Form Architects and Engineers

DRAWING TITLE:




As Built Drawing
Fourth Floor

DATE	SCALE	SHEET NUMBER
Sep,2015	1-100	A401



Notes

- All Dimensions are in cm.

-  Hollow Blocks to be demolished
-  Floor tiles to be removed at the internal floor
-  Gypsum Walls to be demolished

* All Waste materials to be removed to approved dump location.

* All Doors and windows to be dismantled and stored as instructed by the engineer.

* the site should be prepared for the new installations

date of revision	initials	revision details



PROJECT NAME

Family and Juvenile
protection unit
(FJPU)
Ramallah

PRODUCED BY:

DESIGNED BY:

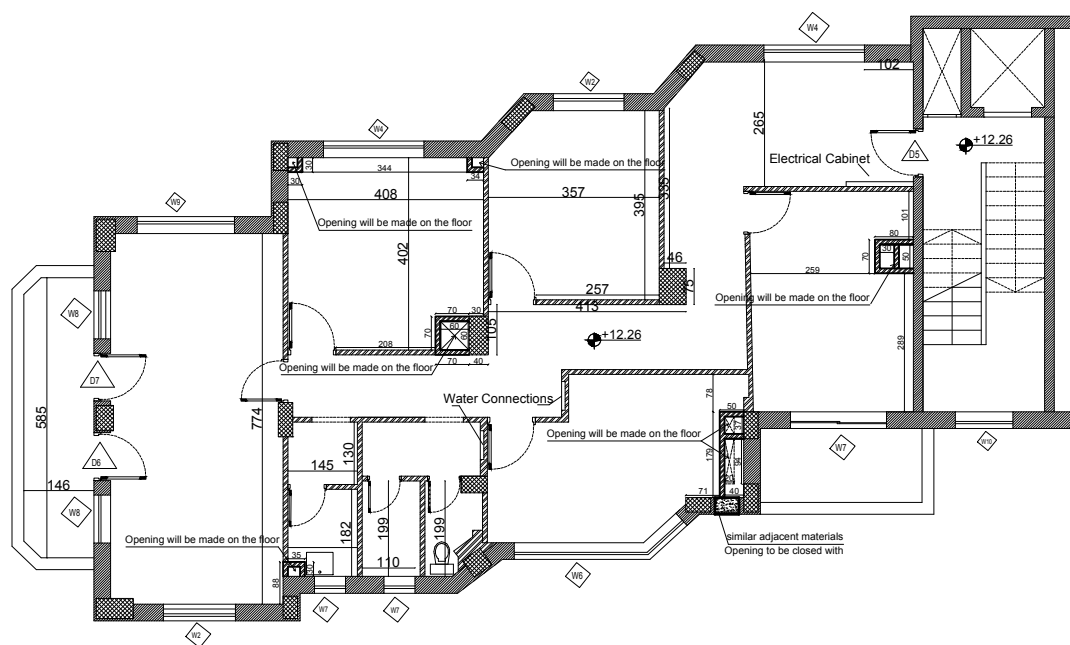


Form Architects and Engineers







DRAWING TITLE:

Demolish Plan
Fourth Floor

DATE	SCALE	SHEET NUMBER
Sep.,2015	1-100	A402



- All Dimensions are in cm.

-  Existing Walls
 Hollow Blocks
 Gypsum Walls
 Concrete
 Stone
 Reinforced Concrete

Procedure before opening ducts:

- Before opening the ducts the contractor must remove the plaster at the location of duct.
- The engineer to check the location of the beams
- The engineer to instruct the contractor to open the floors if the beams do not contradict with opening location.
- If any discrepancy found the duct location should be adjusted to a nearest location without any contradiction with beams.

date of revision	initials	revision details



Family and Juvenile
protection unit
(FJPU)
Ramallah

PRODUCED BY:	
--------------	--

DESIGNED BY:

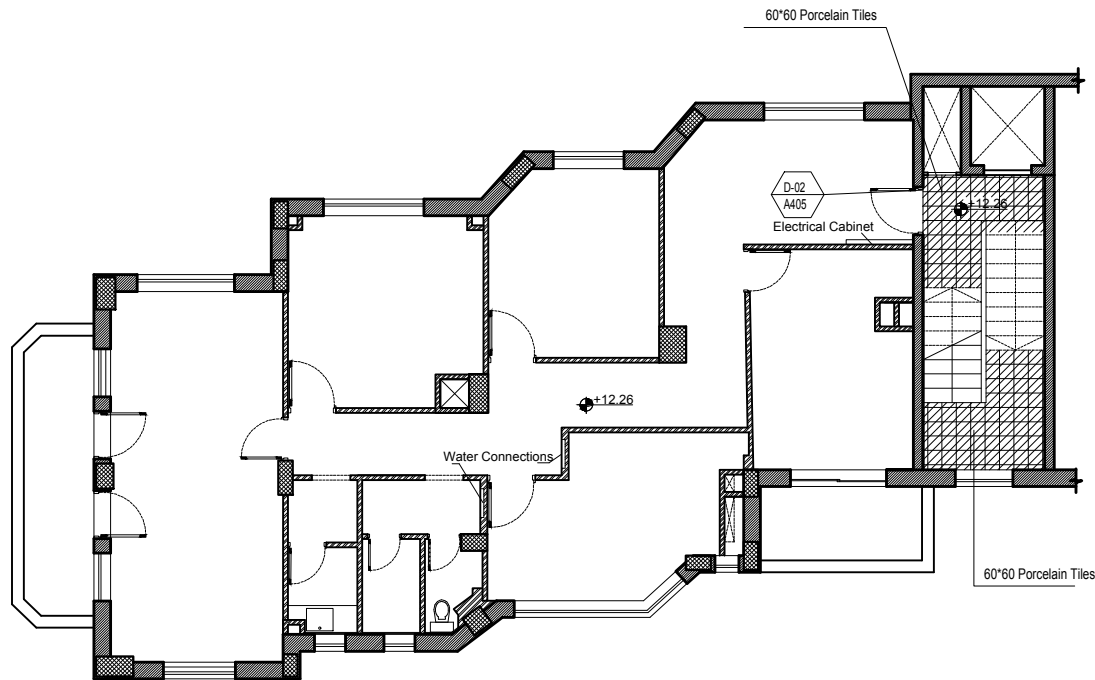
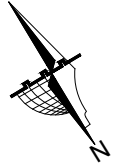


Form Architects and Engineers

DRAWING TITLE:




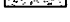




Alteration Plan
Fourth Floor

DATE	SCALE	SHEET NUMBER
Sep,2015	1-100	A403



Notes

- All Dimensions are in cm.

-  Existing Walls
-  Hollow Blocks
-  Gypsum Walls
-  Concrete
-  Stone
-  Reinforced Concrete
-  Terrazzo Tiles
-  Ceramic Tiles

date of revision	initials	revision details



PROJECT NAME

Family and Juvenile
protection unit
(FJPU)
Ramallah

PRODUCED BY:

DESIGNED BY:

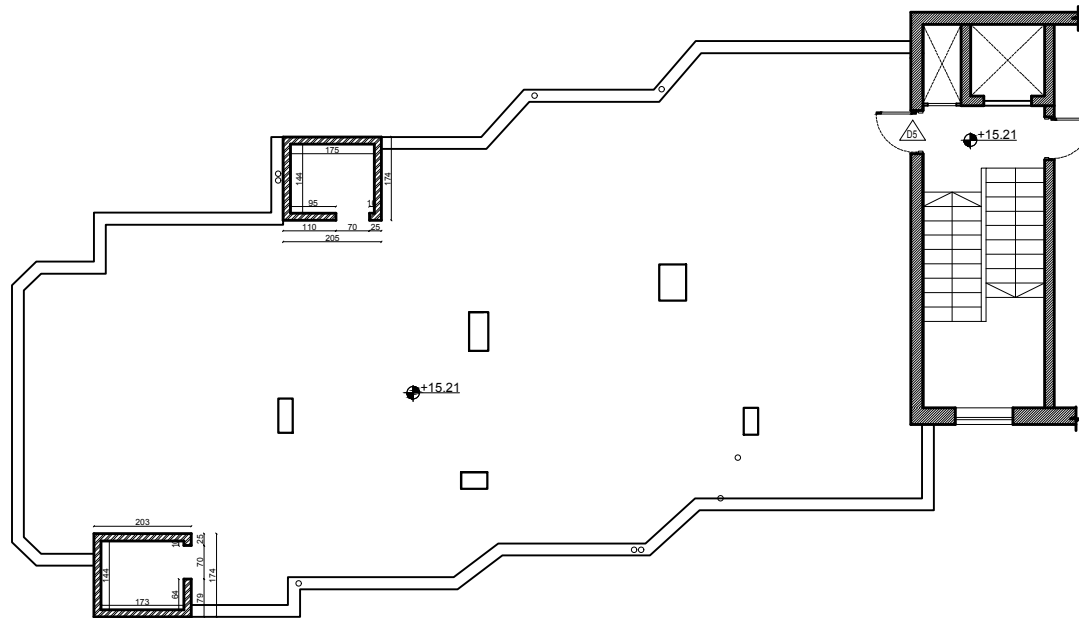
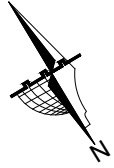


Form Architects and Engineers

DRAWING TITLE:



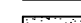



Tiling Plan
Fourth Floor

DATE	SCALE	SHEET NUMBER
Sep.,2015	1-100	A404



Notes

- All Dimensions are in cm.

-  Existing Walls
-  Hollow Blocks
-  Gypsum Walls
-  Concrete
-  Stone
-  Reinforced Concrete

date of revision	initials	revision details



PROJECT NAME

Family and Juvenile
protection unit
(FJPU)
Ramallah

PRODUCED BY:

DESIGNED BY:

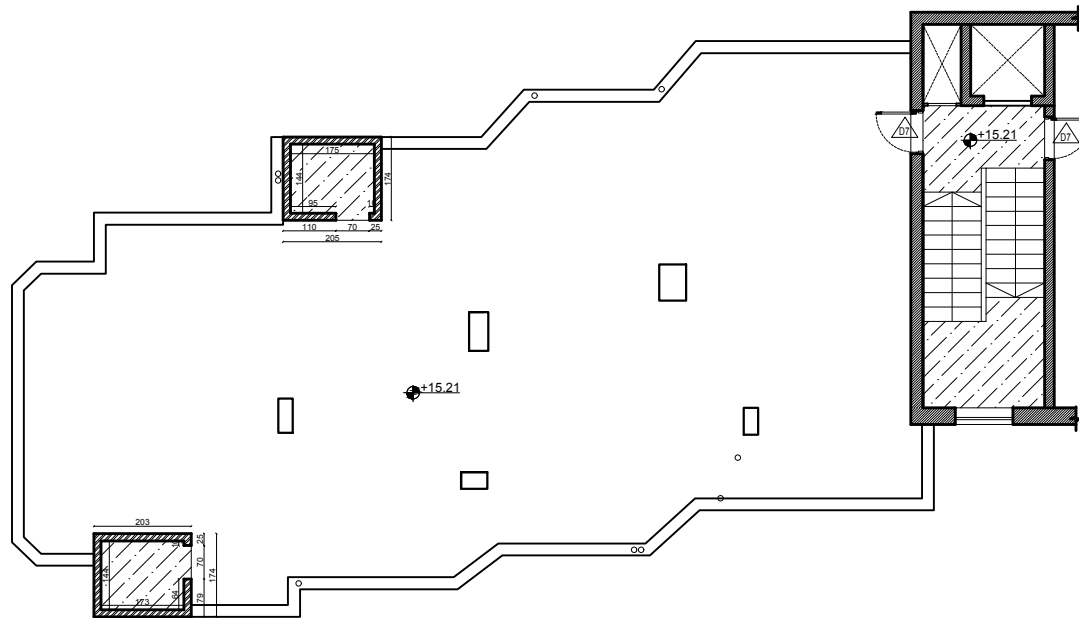
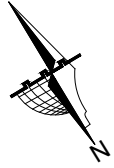


Form Architects and Engineers

DRAWING TITLE:


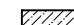

As Built Drawing
Roof Floor

DATE	SCALE	SHEET NUMBER
Sep,2015	1-100	A501



Notes

- All Dimensions are in cm.

-  Hollow Blocks to be demolished
-  Floor tiles to be removed at the internal floor
-  Gypsum Walls to be demolished

* All Waste materials to be removed to approved dump location.

* All Doors and windows to be dismantled and stored as instructed by the engineer.

* the site should be prepared for the new installations

date of revision	initials	revision details



PROJECT NAME

Family and Juvenile
protection unit
(FJPU)
Ramallah

PRODUCED BY:

DESIGNED BY:

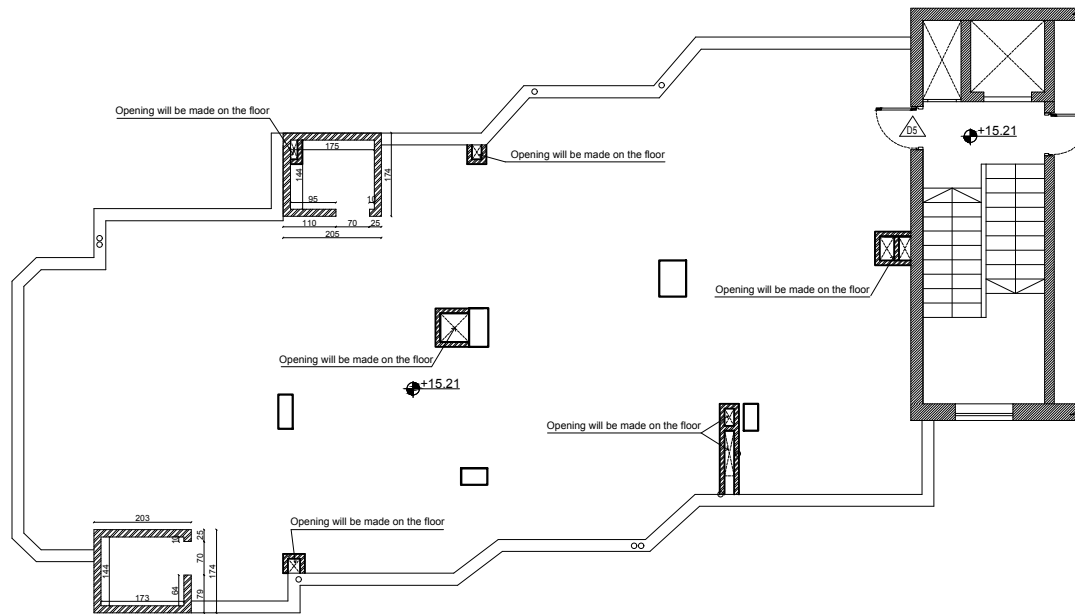
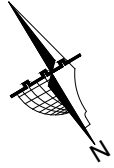


Form Architects and Engineers

DRAWING TITLE:




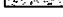


Demolish Plan
Roof Floor

DATE	SCALE	SHEET NUMBER
Sep.,2015	1-100	A502



Notes

- All Dimensions are in cm.

-  Existing Walls
-  Hollow Blocks
-  Gypsum Walls
-  Concrete
-  Stone
-  Reinforced Concrete

Procedure before opening ducts:

- Before opening the ducts the contractor must remove the plaster at the location of duct.
- The engineer to check the location of the beams
- The engineer to instruct the contractor to open the floors if the beams do not contradict with opening location.
- If any discrepancy found the duct location should be adjusted to a nearest location without any contradiction with beams.

date of revision	notes	revision details



PROJECT NAME

Family and Juvenile
protection unit
(FJPU)
Ramallah

PRODUCED BY:

DESIGNED BY:

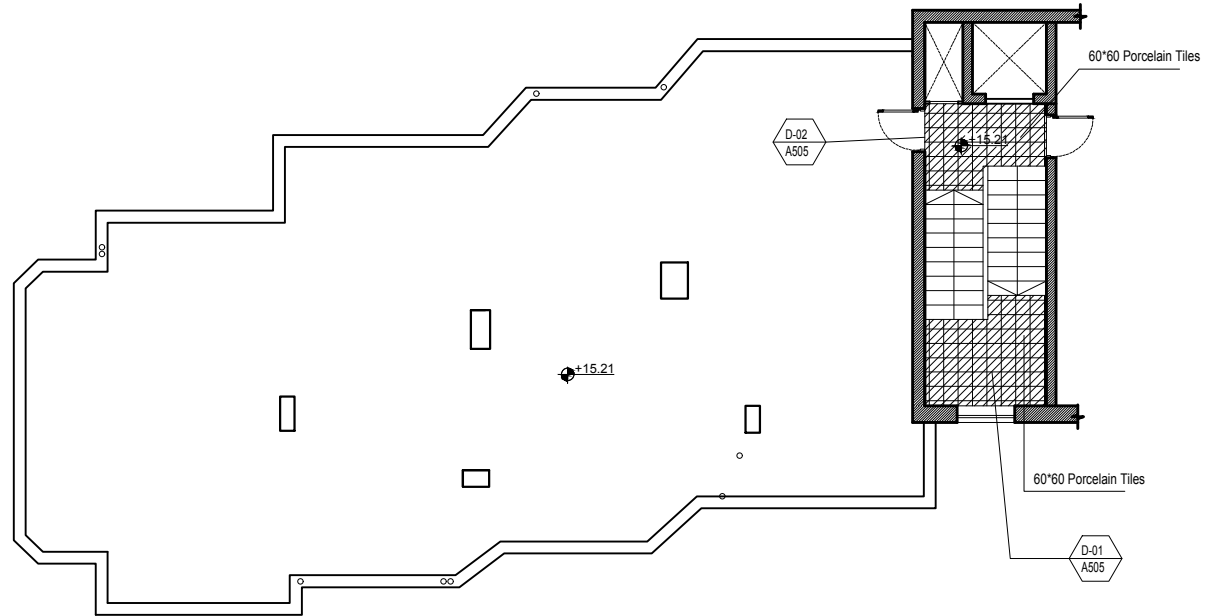
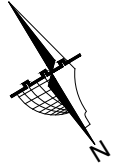


Form Architects and Engineers

DRAWING TITLE:

Alteration Plan
Roof Floor

DATE	SCALE	SHEET NUMBER
Sep.,2015	1-100	A503



Notes

- All Dimensions are in cm.

	Existing Walls
	Hollow Blocks
	Gypsum Walls
	Concrete
	Stone
	Reinforced Concrete
	Terrazo Tiles
	Ceramic Tiles

date of revision	initials	revision details



PROJECT NAME

Family and Juvenile
protection unit
(FJPU)
Ramallah

PRODUCED BY:

DESIGNED BY:

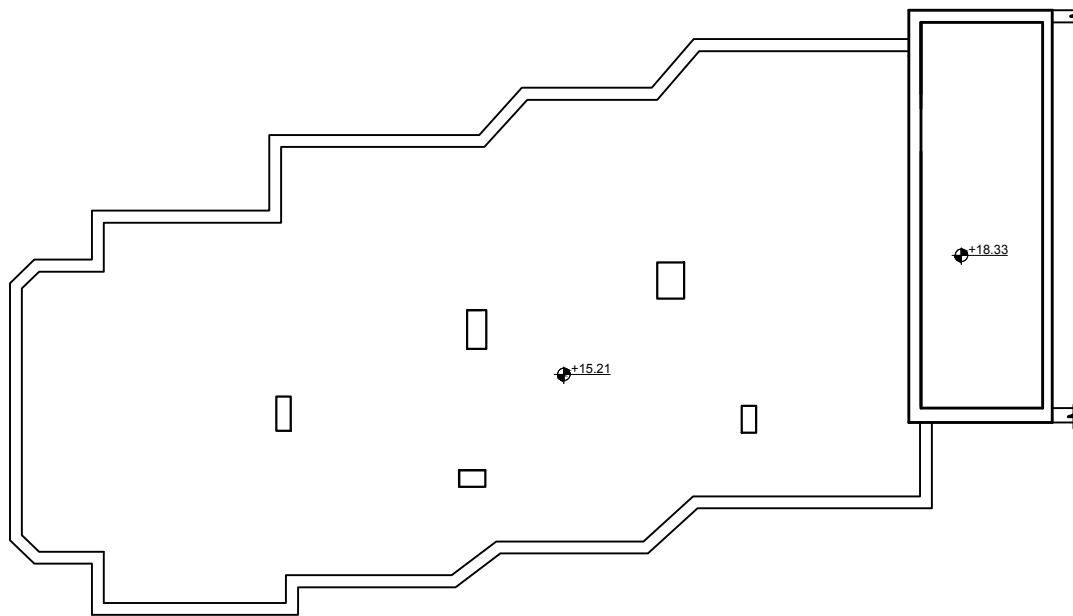
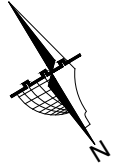


Form Architects and Engineers

DRAWING TITLE:







Tiling Plan
Roof Floor

DATE	SCALE	SHEET NUMBER
Sep.,2015	1-100	A504



Notes

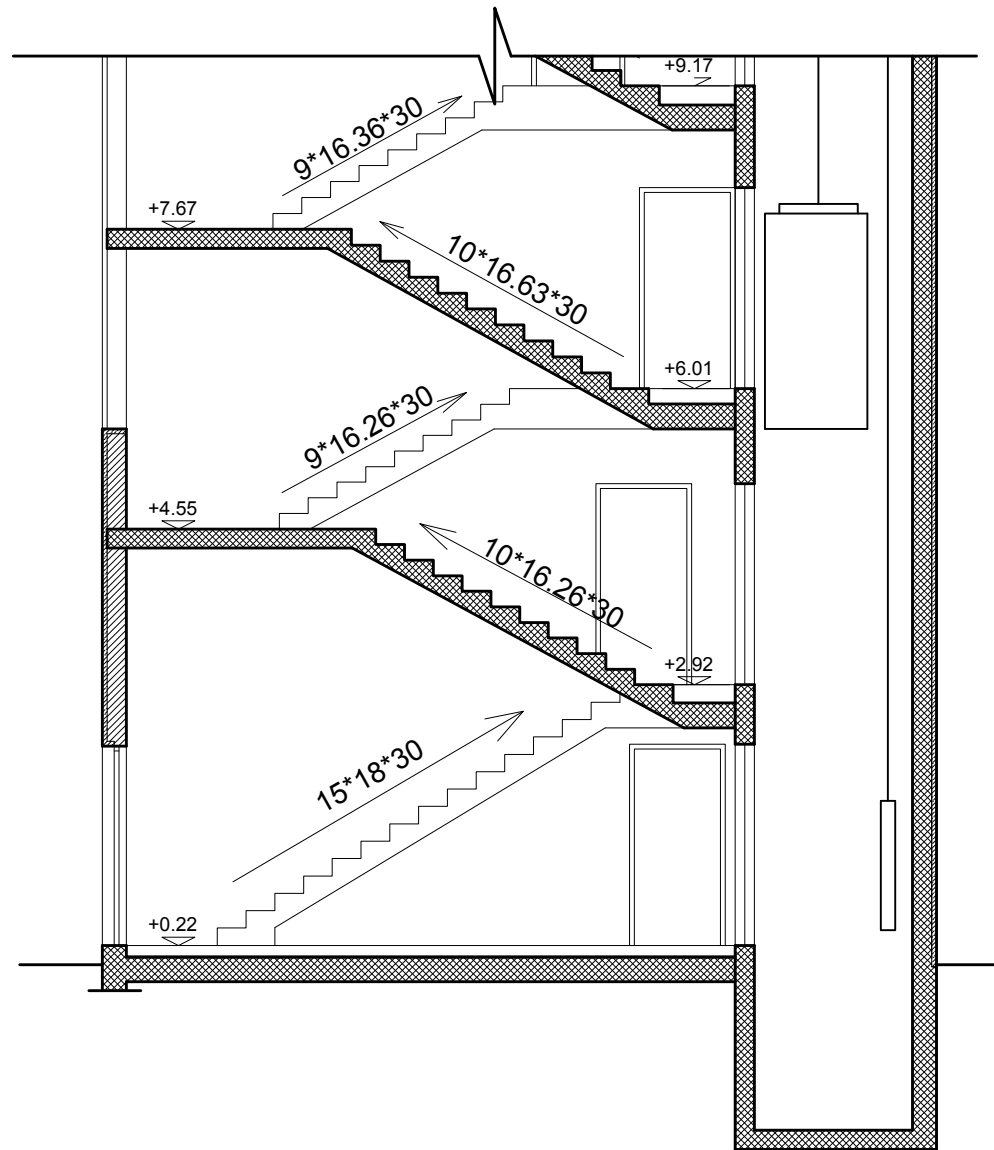
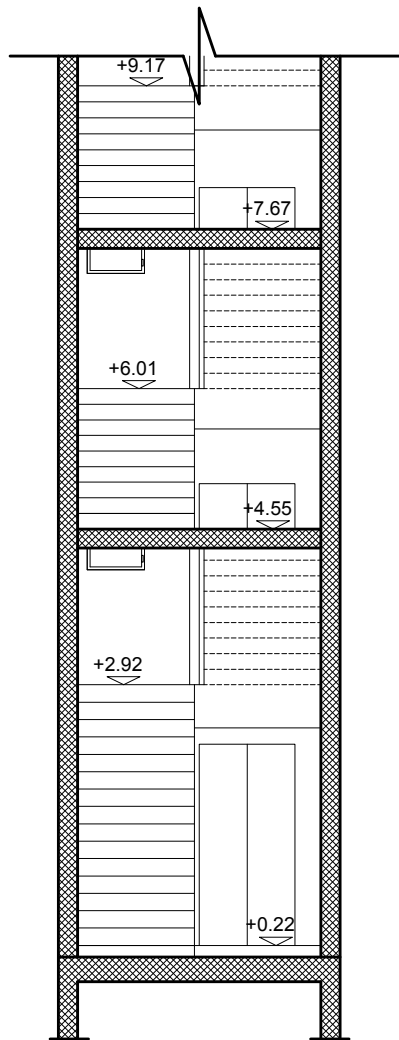
- All Dimensions are in cm.

-  Existing Walls
-  Hollow Blocks
-  Gypsum Walls
-  Concrete
-  Stone
-  Reinforced Concrete

date of revision	initials	revision details




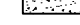




PROJECT NAME		
Family and Juvenile protection unit (FJPU) Ramallah		
PRODUCED BY:		
DESIGNED BY:		
Form Architects and Engineers		
DRAWING TITLE:		
Proposed Layout Top Roof Floor		
DATE	SCALE	SHEET NUMBER
Sep,2015	1-100	A601



Notes

- All Dimensions are in cm.

-  Existing Walls
-  Hollow Blocks
-  Gypsum Walls
-  Concrete
-  Stone
-  Reinforced Concrete

date of revision	initials	revision details



PROJECT NAME

Family and Juvenile
protection unit
(FJPU)
Ramallah

PRODUCED BY:

DESIGNED BY:



Form Architects and Engineers

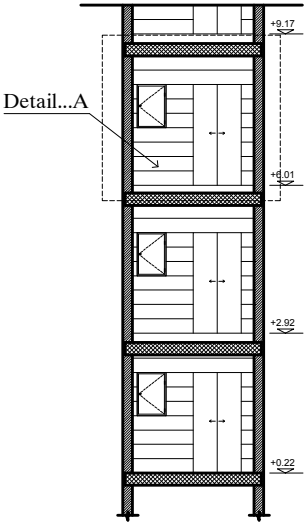
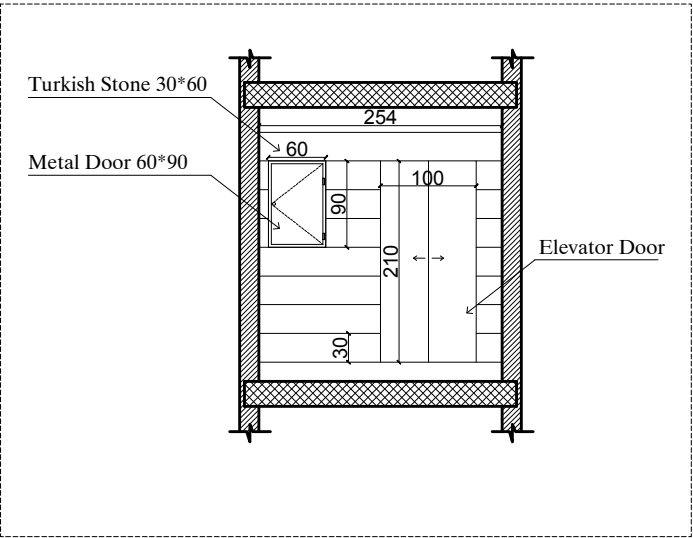
DRAWING TITLE:

Stair Sections

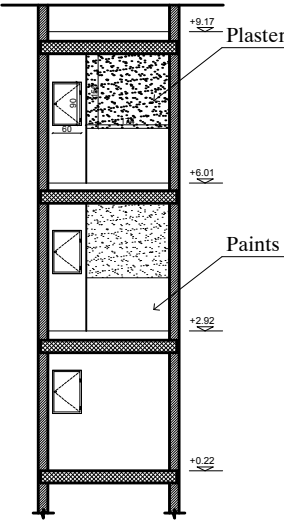
DATE	SCALE	SHEET NUMBER
Sep,2015	1-50	A701

Detail...A

Scale 1:50



Proposed Elevation



As Built Elevation

Notes

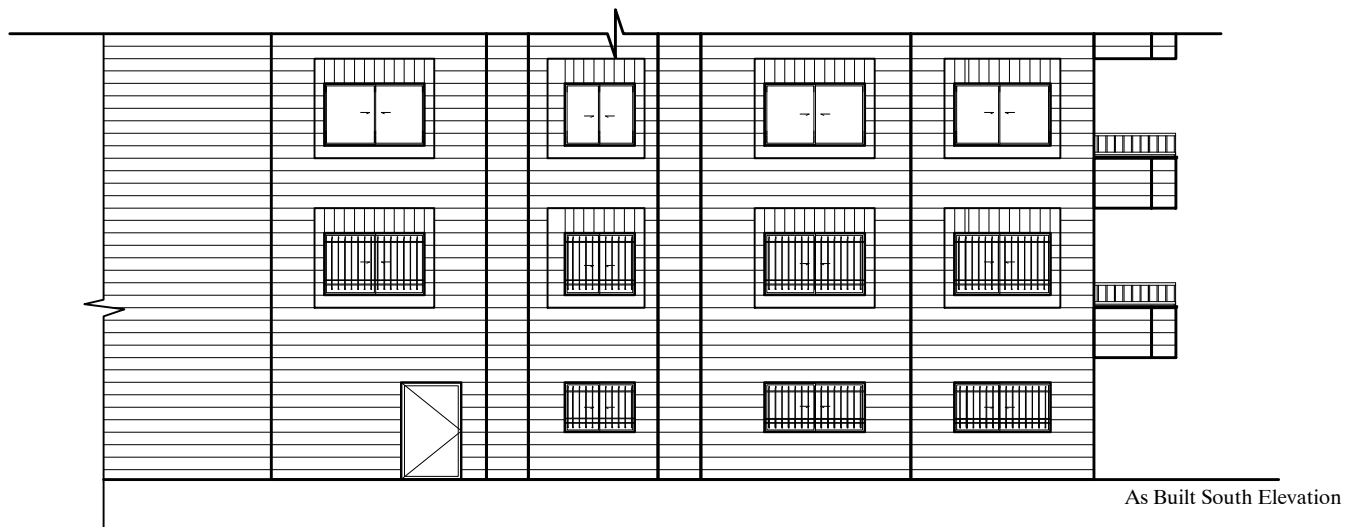
- All Dimensions are in cm.

- Existing Walls
- Hollow Blocks
- Gypsum Walls
- Concrete
- Stone
- Reinforced Concrete

date of revision	initials	revision details



PROJECT NAME		
Family and Juvenile protection unit (FJU) Ramallah		
PRODUCED BY:		
DESIGNED BY:		
FORM Architects and Engineers		
DRAWING TITLE:		
Elevator Elevations Sections		
DATE	SCALE	SHEET NUMBER
Sep,2015	1-100	A702



Notes

- All Dimensions are in cm.

date of revision	initials	revision details

PROJECT NAME

Family and Juvenile
protection unit
(FJPU)
Ramallah

PRODUCED BY:

DESIGNED BY:



Form Architects and Engineers

DRAWING TITLE:

As built elevations

DATE	SCALE	SHEET NUMBER
Sep,2015	1-100	A 801



As Built North Elevation



As Built East Elevation

Notes

- All Dimensions are in cm.

date of revision	initials	revision details

PROJECT NAME

Family and Juvenile
protection unit
(FJPU)
Ramallah

PRODUCED BY:

DESIGNED BY:

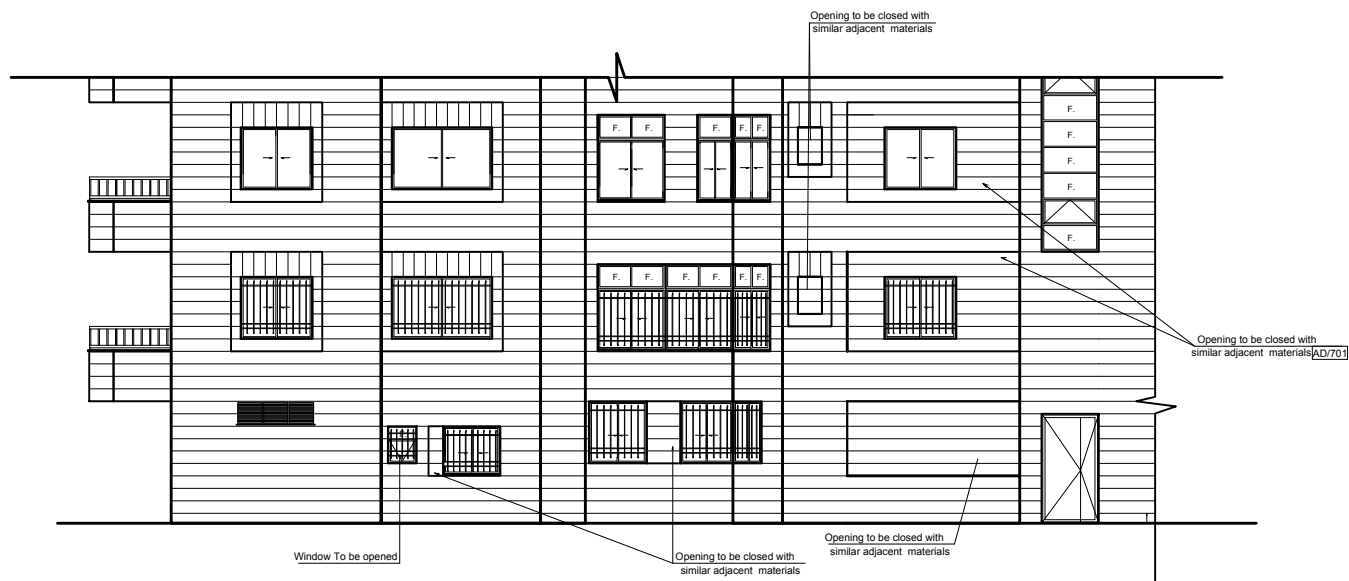


Form Architects and Engineers

DRAWING TITLE:

As built elevations

DATE	SCALE	SHEET NUMBER
Sep,2015	1-100	A 802



Notes

- All Dimensions are in cm.

date of revision	initials	revision details

PROJECT NAME

Family and Juvenile
protection unit
(FJPU)
Ramallah

PRODUCED BY:

DESIGNED BY:



Form Architects and Engineers

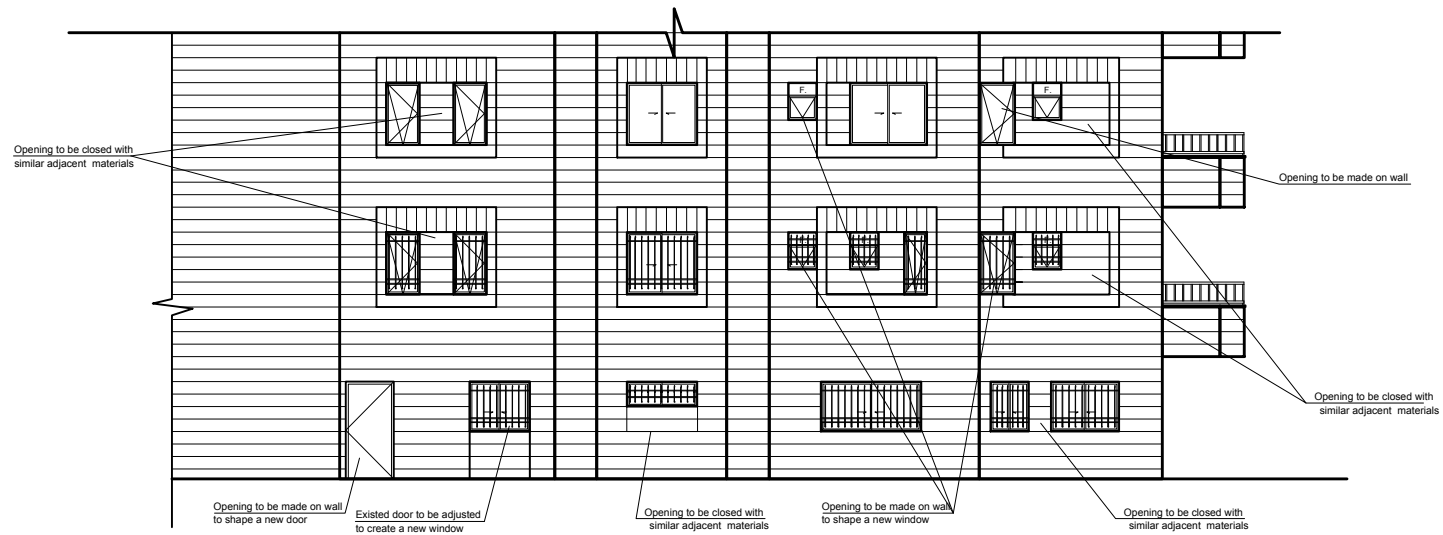
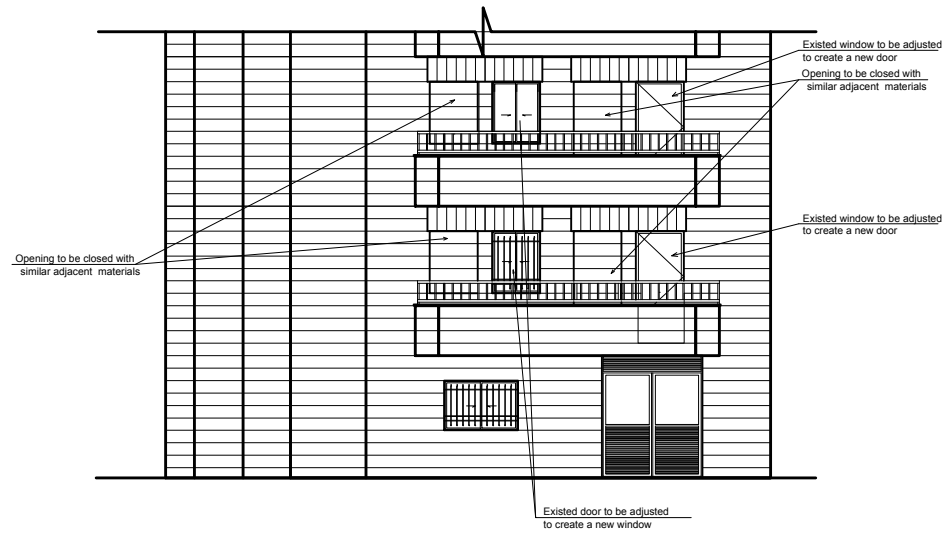
DRAWING TITLE:

Modified North Elevation

DATE	SCALE	SHEET NUMBER
Sep,2015	1-100	A 803

Notes

- All Dimensions are in cm.



PROJECT NAME

Family and Juvenile
protection unit
(FJPU)
Ramallah

PRODUCED BY:

DESIGNED BY:



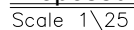
Form Architects and Engineers

DRAWING TITLE:

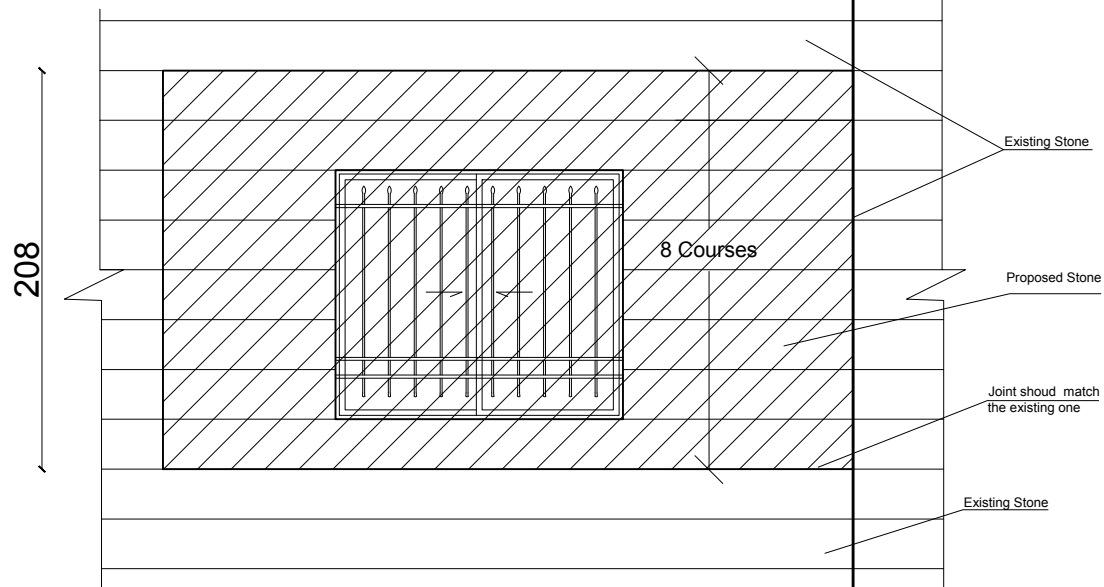
Modified South Elevation

DATE	SCALE	SHEET NUMBER
Sep,2015	1-100	A 804







Scale 1\25



Scale 1\25



- All Dimensions are in cm.

-  Existing Walls
 Hollow Blocks
 Gypsum Walls
 Concrete
 Stone
 Reinforced Concrete

[illegible]

PROJECT NAME

Family and Juvenile
protection unit
(FJPU)
Ramallah

PRODUCED BY:	
--------------	--

DESIGNED BY:

Form Architects and Engineers

DRAWING TITLE:

Alteration Detail

DATE	SCALE	SHEET NUMBER
Sep,2015	1-100	A 806