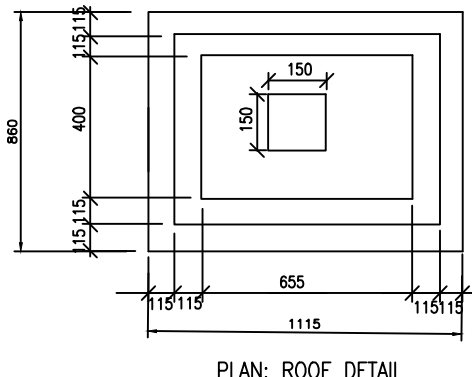
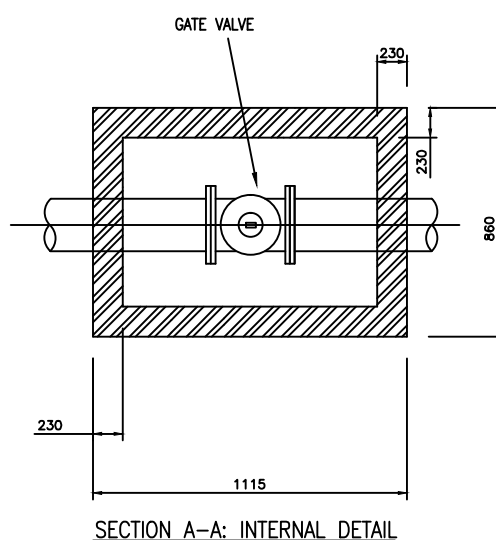


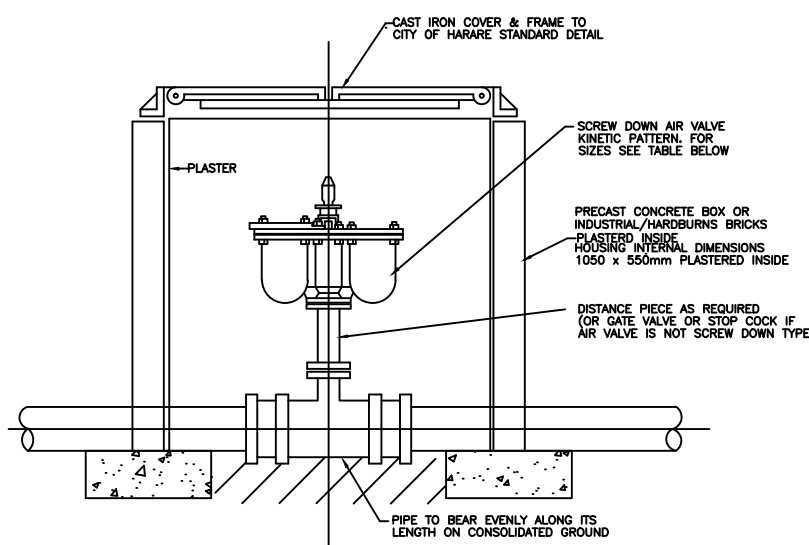
GATE VALVE CHAMBER
MAINS UP TO 300mm DIA.



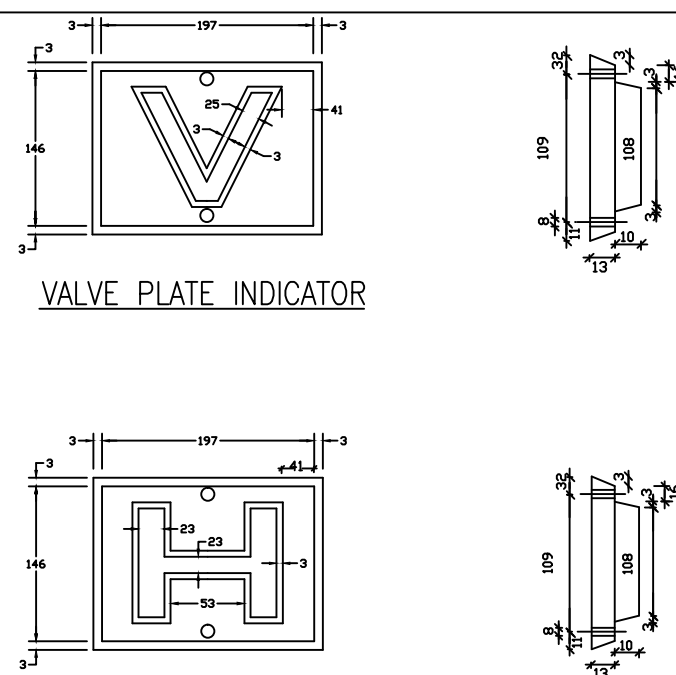
PLAN: ROOF DETAIL



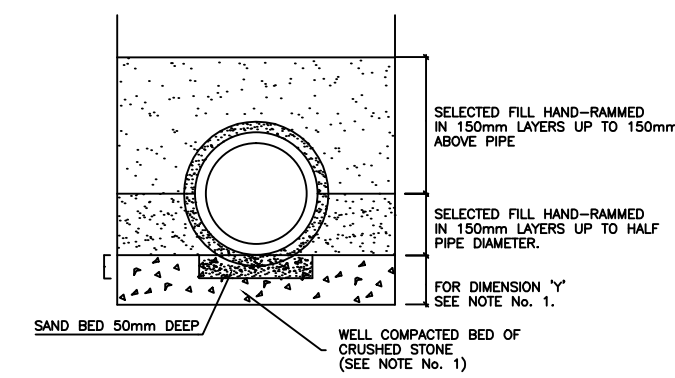
SECTION A-A: INTERNAL DETAIL



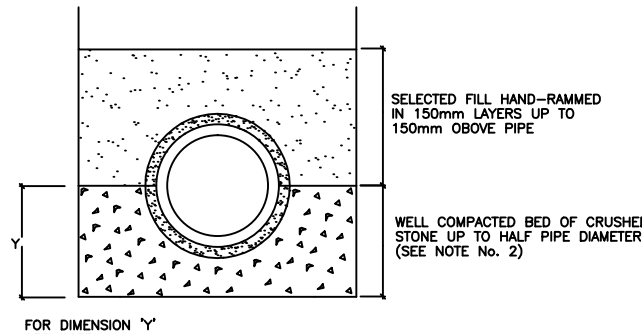
TYPICAL AIR VALVE ASSEMBLY



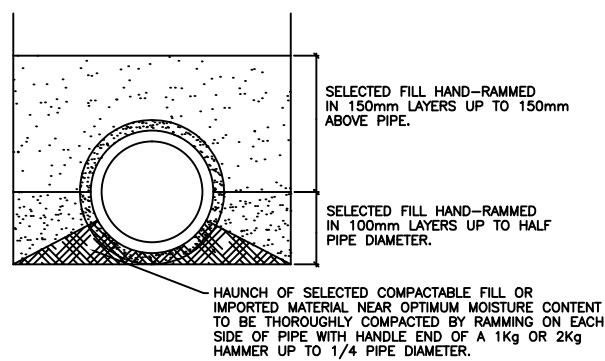
VALVE PLATE INDICATOR
HYDRANT PLATE INDICATOR
STANDARD MARKER PLATES



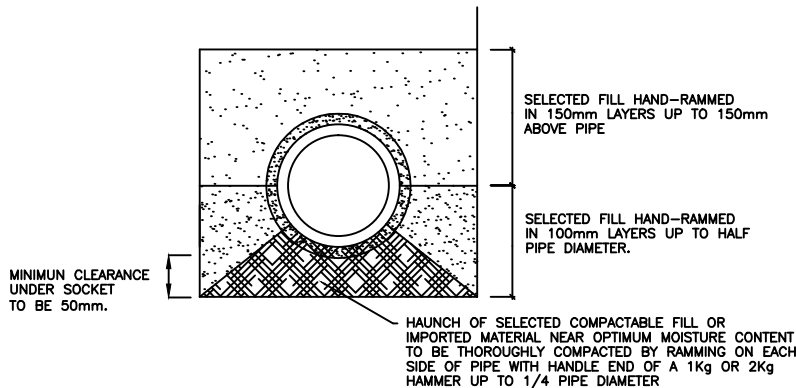
CLASS C ($F_m = 1.5$)
FLAT CRUSHED STONE BEDDING



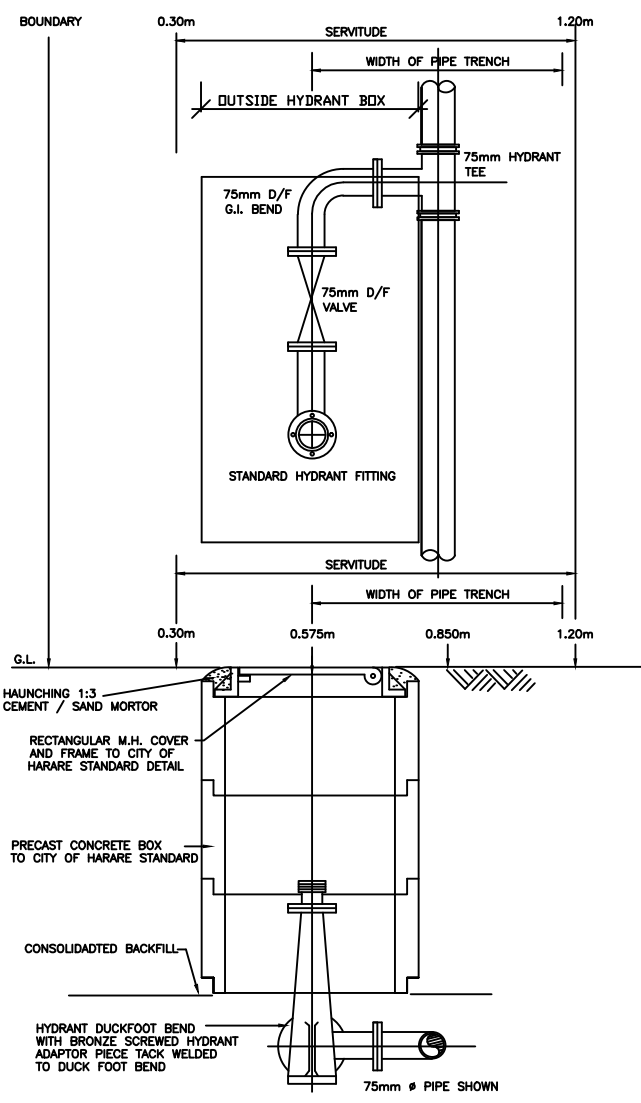
CLASS B ($F_m = 1.9$)
CRUSHED STONE BEDDING



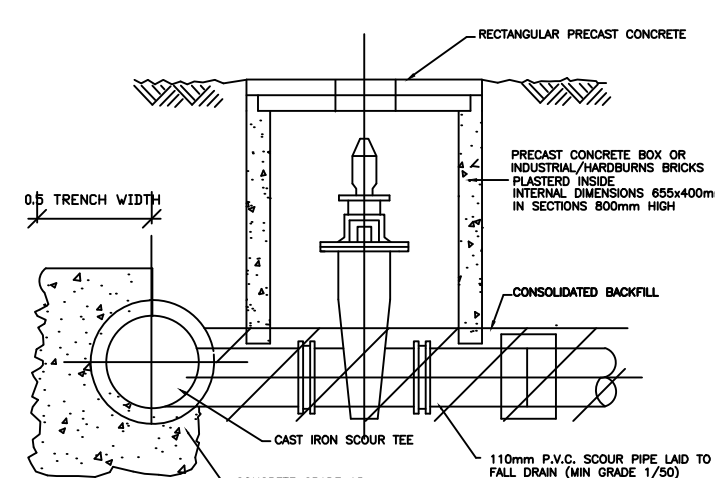
CLASS D/2 ($F_m = 1.1$)
BEDDING ON TRENCH FLOOR



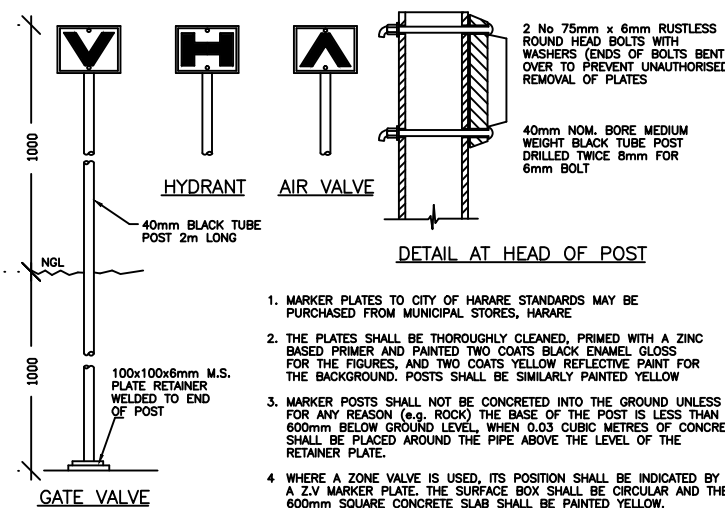
CLASS D/1 ($F_m = 1.1$)
COMPACTED SOIL HAUNCH BEDDING



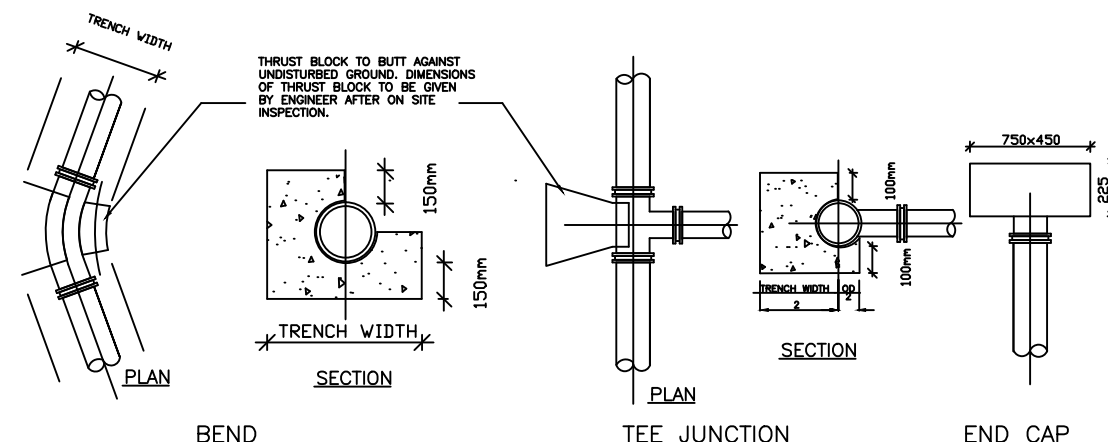
DETAIL OF FIRE
HYDRANT INSTALLATION



SCOUR VALVE INSTALLATION



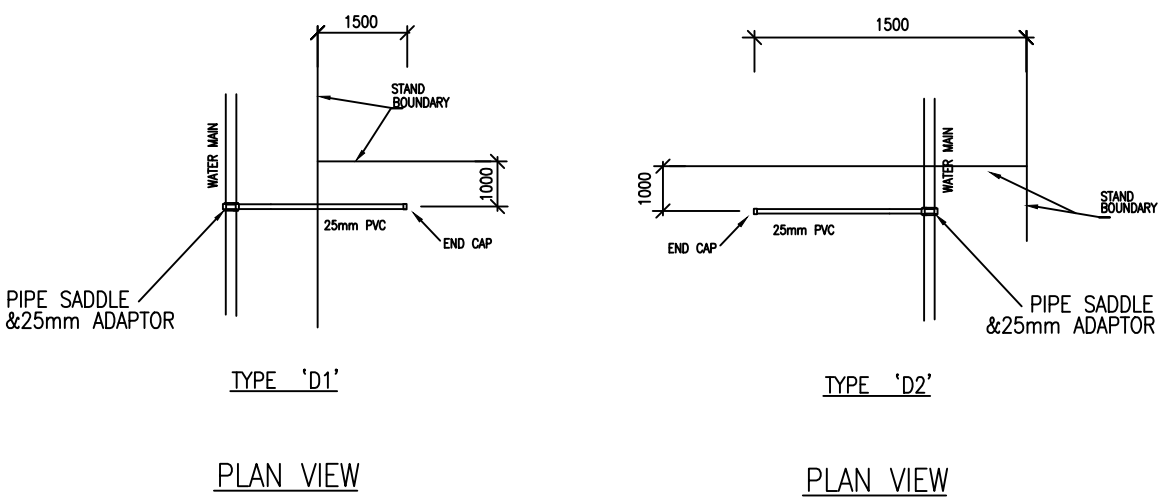
DETAILS OF MARKER PLATES & POSTS



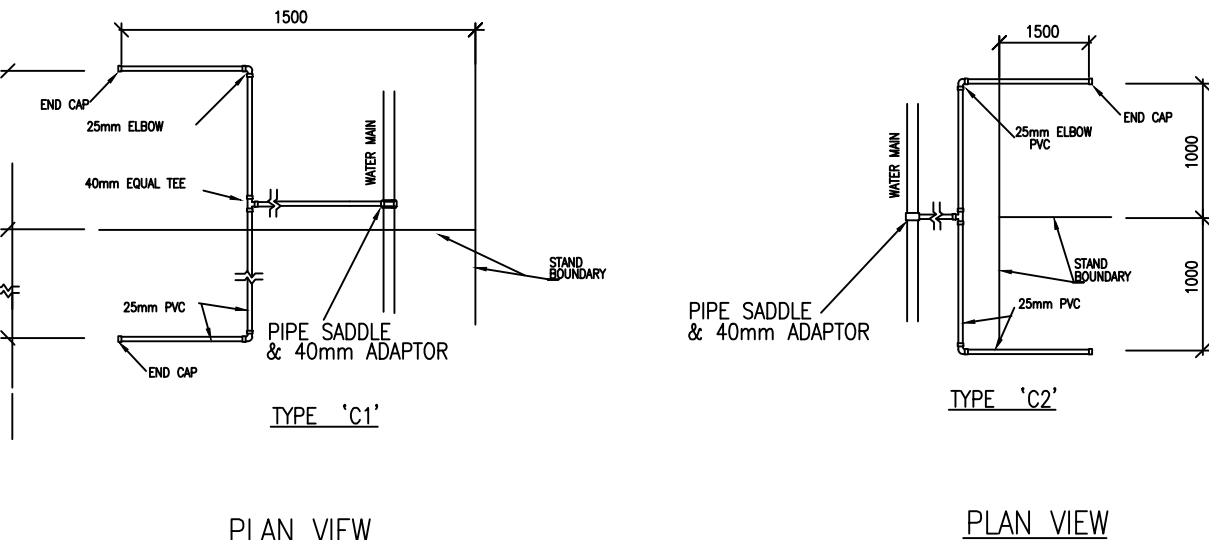
TYPICAL THRUST BLOCK DETAILS

90° BEND THRUST BLOCK			45° BEND THRUST BLOCK		
PIPE SIZE(mm)	WIDTH(mm)	HEIGHT(mm)	PIPE SIZE(mm)	WIDTH(mm)	HEIGHT(mm)
75	600	300	75	450	200
90	700	350	90	600	250

PIPE BEDDING DETAILS

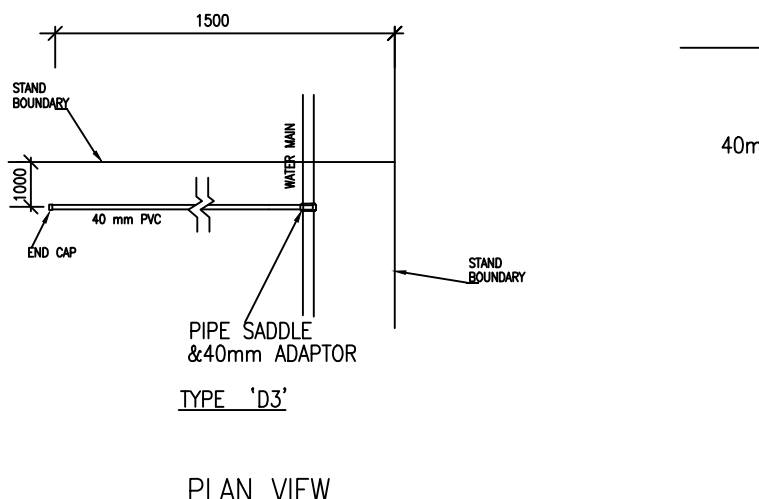


SINGLE STAND CONNECTION

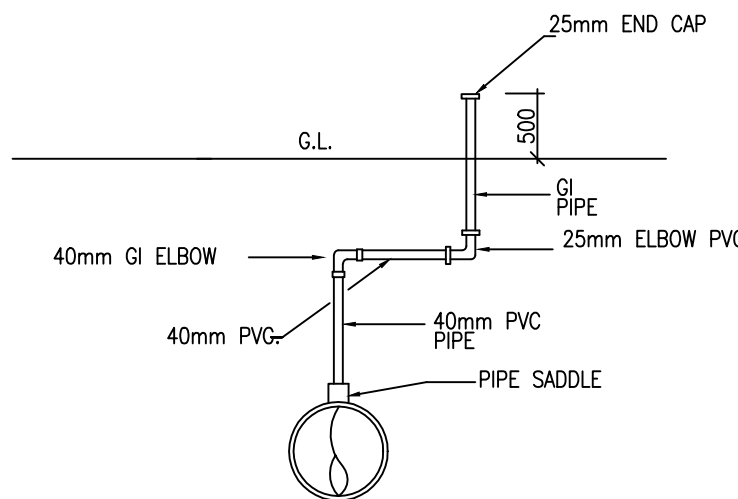


DOUBLE STAND CONNECTION

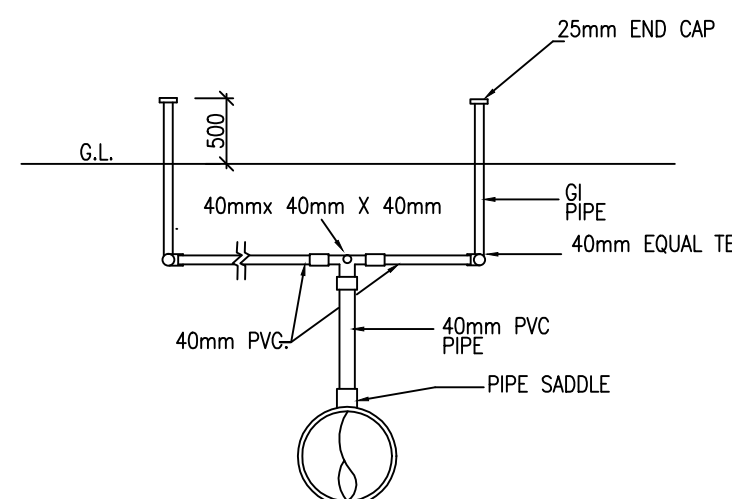
Commercial Stand Connection



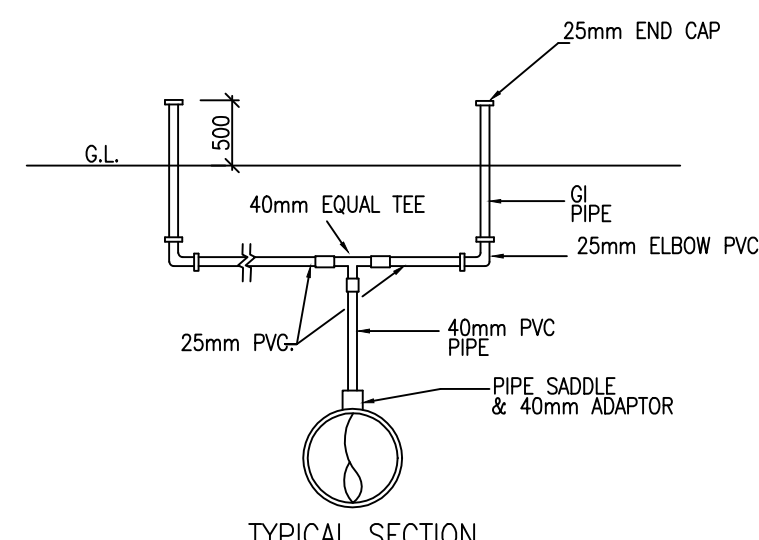
PLAN VIEW



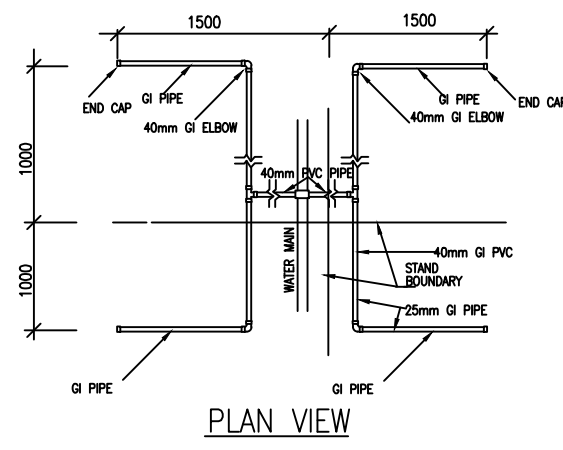
TYPICAL SECTION



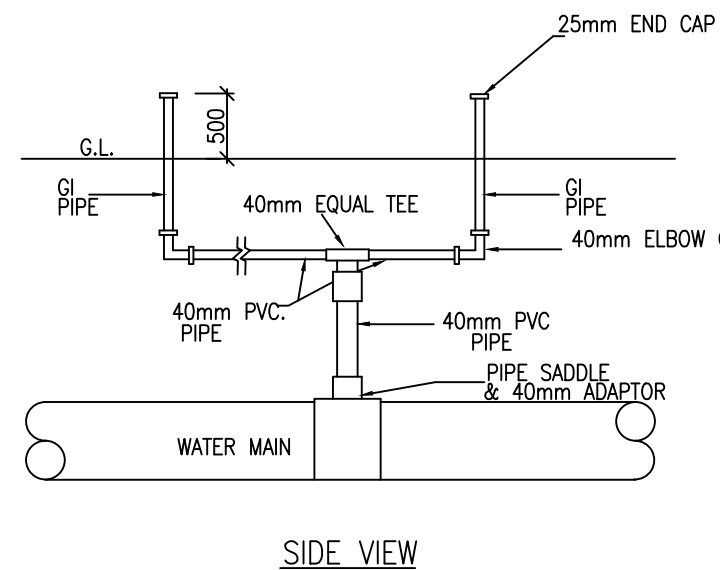
TYPICAL SECTION



TYPICAL SECTION



PLAN VIEW



SIDE VIEW

QUAD STAND CONNECTION

<div>No. 14 Fereday Drive Eastlea, HARARE P O Box UA 287 Union Avenue HARARE Zimbabwe</div> <div></div> <div>Tel: +263-4-741122/25378801 Fax: +263-4-747824 Cell: 072 545893 / 074 164142 admin@cgmgengineers.co.zw</div>	Drawing No. 1601 C103-2	Revision —	Amendment	Description	Client: <div> Access to Affordable Quality Medicines</div>	<div>MINISTRY OF LOCAL GOVERNMENT, PUBLIC WORKS AND NATIONAL HOUSING, MAKOMBE BUILDING, PRIVATE BAG 7706, CAUSEWAY, HARARE</div> <div></div>	Engineer	Branch Head	Ministry	Health and Child Care	Centre	Harare					
			CGM				Mr. Njome	Department									
			Designed				CGM	Scale	1:500 on A1	Title	Proposed NatPharm Distribution Centre on Stand 3163, Southerton, Lobengula Road						
			Drawn				CGM	Date	February 2016	Description	Water Reticulation Standard Details						
			Checked				CGM	File Ref.									
TELEPHONE 704561								Stock Dwg. No.		G.P. No.		Proj. No.		Amtd Ltr.		—	