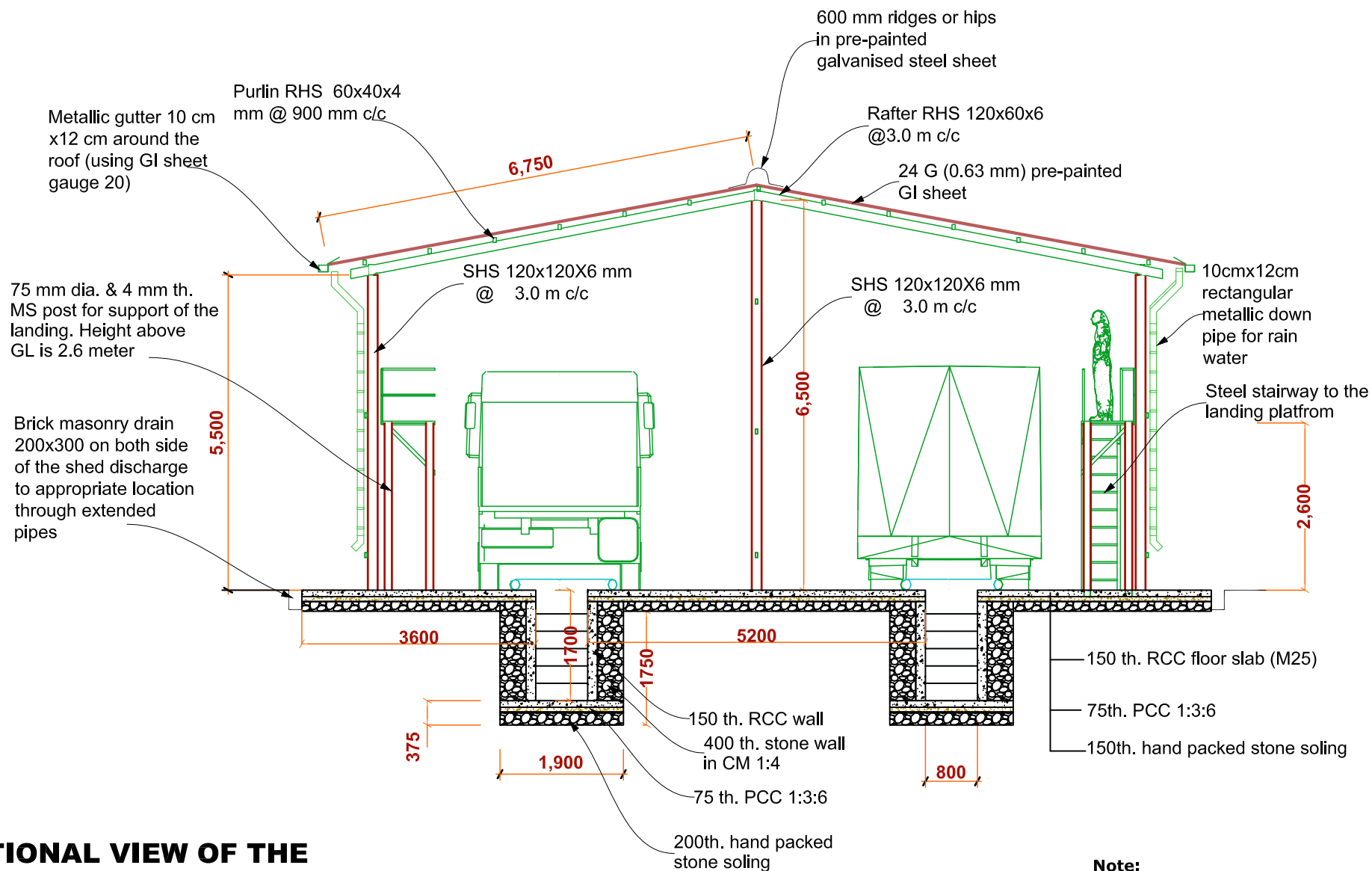


Technical drawing of a rectangular inspection pit. The drawing shows a top-down view of the pit, which is 12000 mm long and 6000 mm wide. The pit is divided into two sections, each 6000 mm wide. The top section is 12000 mm long, and the bottom section is 12800 mm long. The pit is surrounded by a 3000 mm wide area. The drawing includes dimensions for the pit's length (12000 mm, 12800 mm), width (6000 mm), and the surrounding area (3000 mm). It also shows the pit's internal structure, including a 800 mm wide central area and a 1300 mm wide side area. The drawing is labeled with 'MS steel pipe 150 mm dia.', 'Inspection Pit', 'steel stair & landing for inspection', and 'MS steel post 100 dia. for supporting landing platform'. A note at the bottom right states: 'Note: 1.0 All dimensions are in mm'.

1.0 All dimensions are in MM  
2.0 Drawing not to Scale. Follow written dimensions

SCALE	NTS	 	<b>Construction of Passport Control Building at Aqina BCP, Faryab Province, Afghanistan</b>	Drawing Name INSPECTION PIT PLAN	Revisions	PROJECT REQUESTED BY:	APPROVED BY:	
DESIGNED BY	THINLEY PENJOIRE International Engineering Specialist							
DRAWN BY	THINLEY PENJOIRE			Border Management Northern Afghanistan (BOMNAF II) Funded by European Union		Drawing No. SP 01	ABP Afghanistan	William Lawrence Project Manager
DATE	03 May 2016							



## SECTIONAL VIEW OF THE VEHICLE INSPECTION PIT

### Note:

1.0 All dimensions are in MM

2.0 Drawing not to Scale. Follow written dimensions

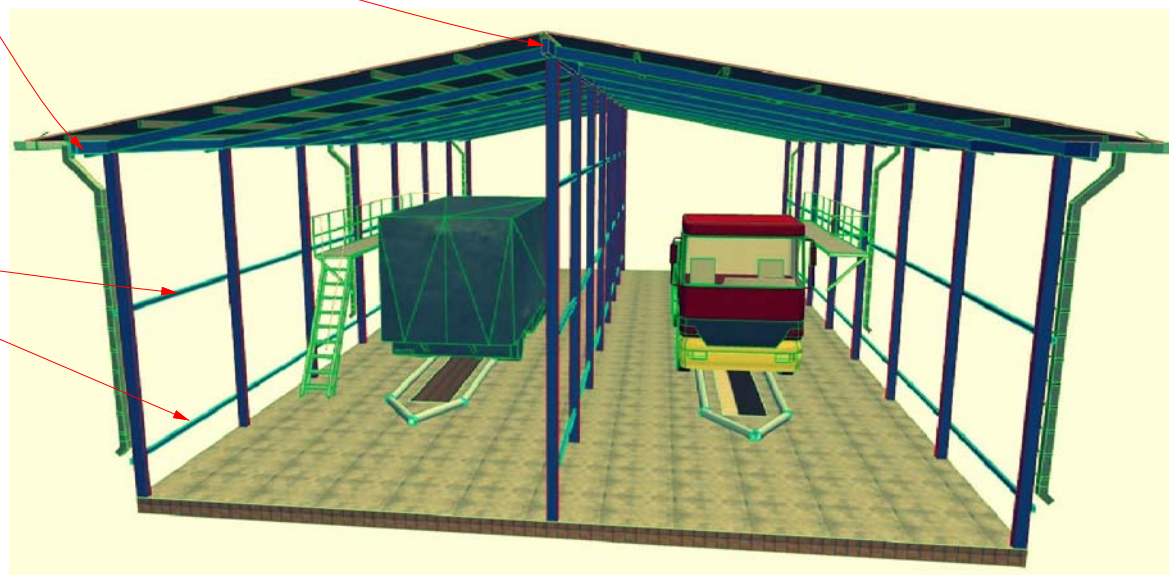
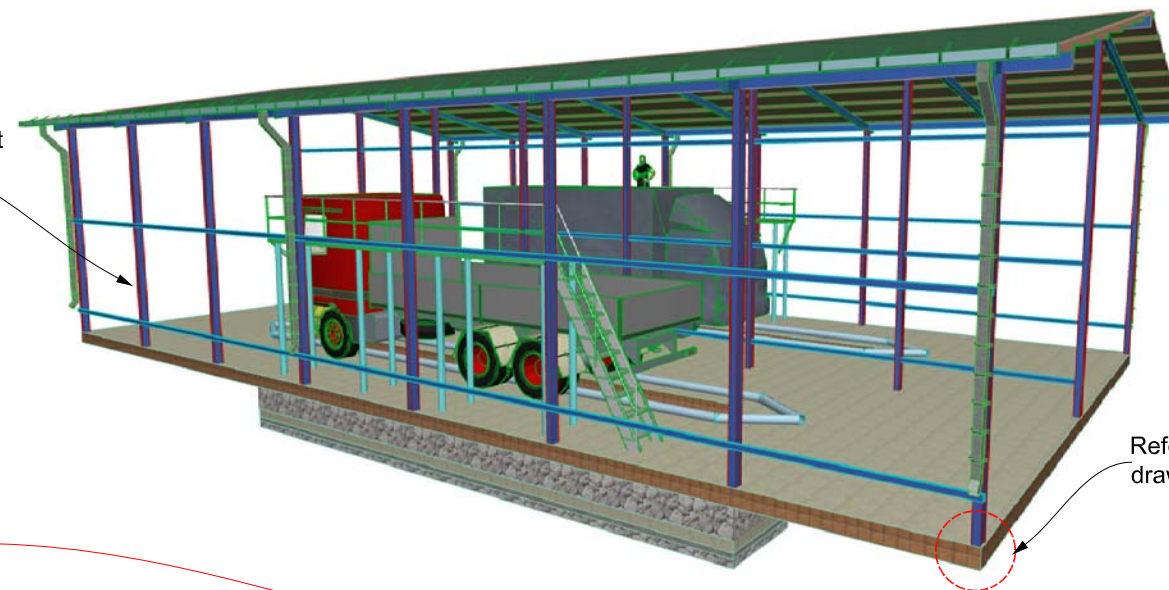
SCALE	NTS	 	<b>Construction of Vehicle Inspection Shed at Aqina BCP, Faryab Province, Afghanistan</b>  Border Management Northern Afghanistan (BOMNAF II) Funded by European Union	Drawing Name <b>SECTIONAL VIEW OF VEHICLE INSPECTION PIT</b>	Revisions  PROJECT REQUESTED BY:  ABP Afghanistan	APPROVED BY:  William Lawrence Project Manager
DESIGNED BY	THINLEY PENJORE International Engineering Specialist					
DRAWN BY	THINLEY PENJORE			Drawing No. <b>IP 02</b>		
DATE	03 May 2016			Sheet No. <b>02</b>		

square hollow section (SHS) column  
120x120x6 mm fixed to RCC slab with  
angle iron 100x100x5 mm with bolts & nut  
system

RHS120x60x6 horizontal beam  
on top of the SHS 120x120x6  
columns connected by welding

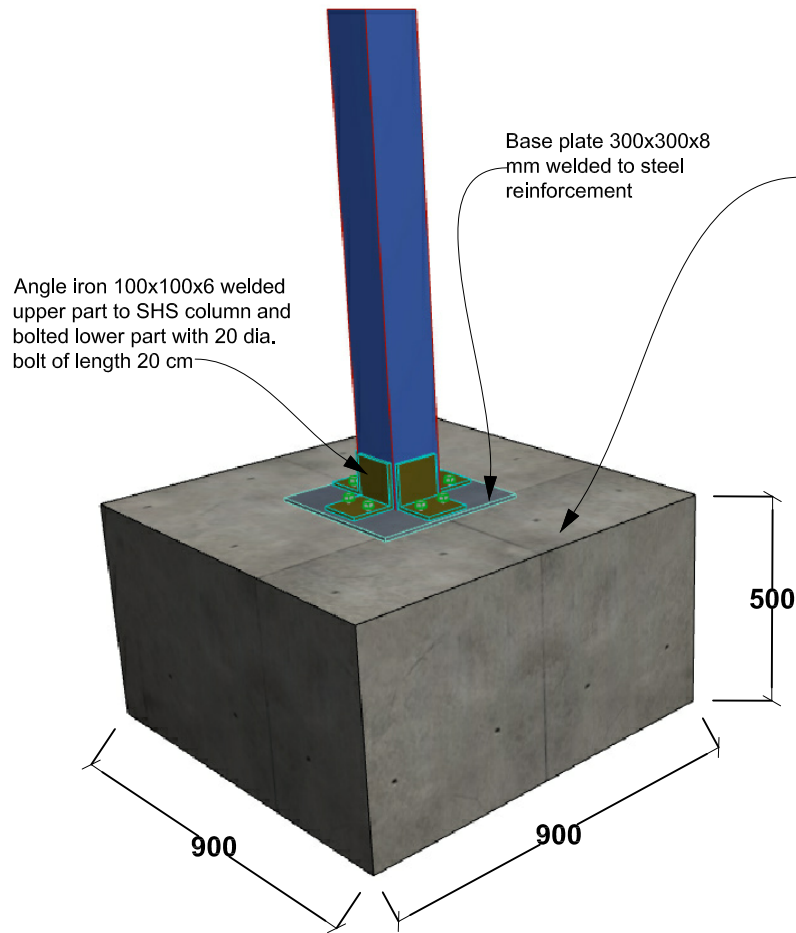
horizontal bracing (3 rows) -  
RHS 60x40x4 mm welded to  
the SHS columns

Refer connection details  
drawing No. IP 04

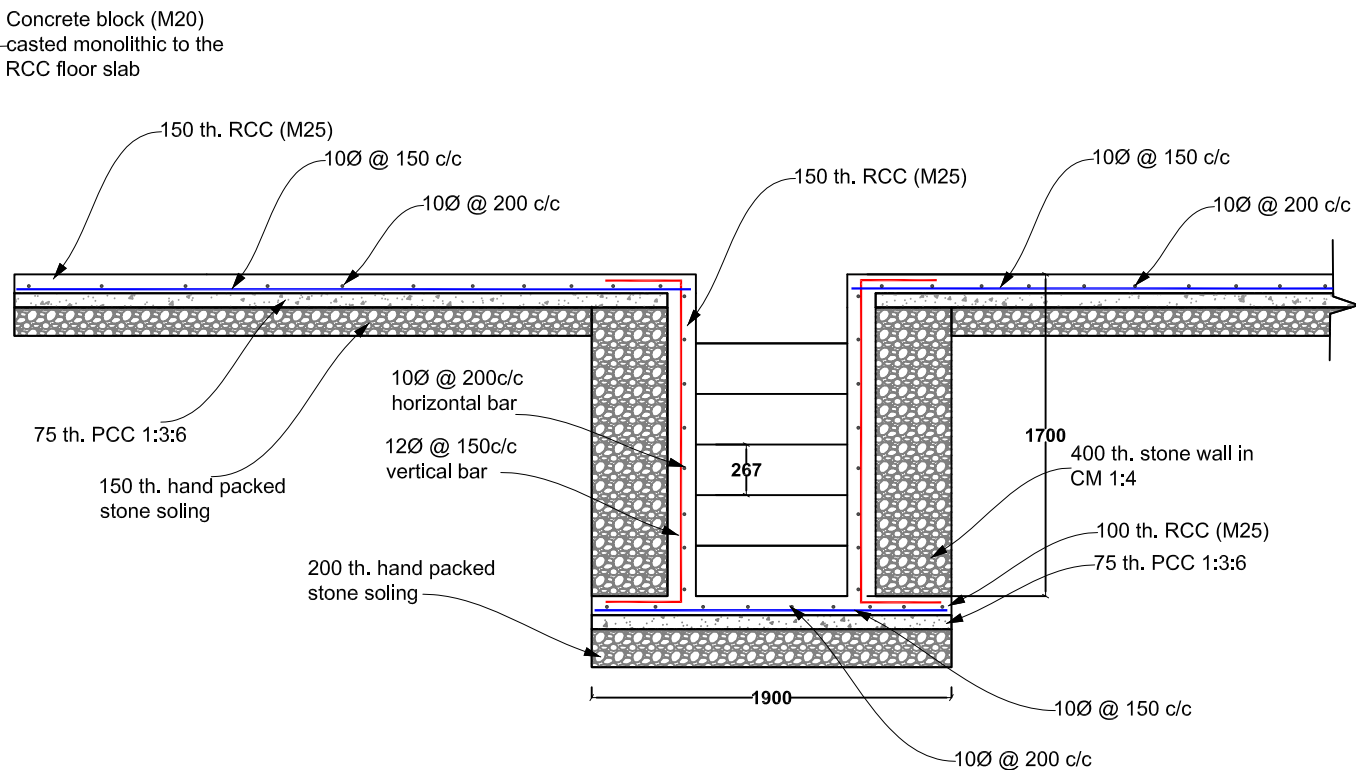


**3D VIEW OF THE  
INSPECTION SHED  
FROM 2 DIFFERENT  
ANGLE**

<b>SCALE</b>	NTS	 	<b>Construction of Vehicle Inspection Shed at Aqina BCP, Faryab Province, Afghanistan</b>  Border Management Northern Afghanistan (BOMNAF II) Funded by European Union	<b>Drawing Name</b> 3D VIEW OF THE INSPECTION SHED	<b>Revisions</b>	<b>PROJECT REQUESTED BY:</b>  ABP Afghanistan	<b>APPROVED BY:</b>  William Lawrence Project Manager
<b>DESIGNED BY</b>	THINLEY PENJOIRE International Engineering Specialist			<b>Drawing No.</b> IP 03			
<b>DRAWN BY</b>	THINLEY PENJOIRE			<b>Sheet No.</b> 03			
<b>DATE</b>	03 May 2016						



**DETAIL OF SHS COLUMN FIXING  
TO BASE CONCRETE**



**REINFORCEMENT DETAILS FOR INSPECTION PIT  
RCC WALL AND RCC FLOOR SLAB**

**Note:**

1.0 All dimensions are in MM

2.0 Drawing not to Scale. Follow written dimensions

<b>SCALE</b>	NTS			<b>Construction of Vehicle Inspection Shed at Aqina BCP, Faryab Province, Afghanistan</b>	<b>Drawing Name</b>	<b>Revisions</b>	<b>PROJECT REQUESTED BY:</b>	<b>APPROVED BY:</b>
<b>DESIGNED BY</b>	THINLEY PENJOIRE International Engineering Specialist				Column fixing & other Reinforcement details			
<b>DRAWN BY</b>	THINLEY PENJOIRE				<b>Drawing No. IP 04</b>			
<b>DATE</b>	04 May 2016				<b>Sheet No. 04</b>		ABP Afghanistan	William Lawrence Project Manager