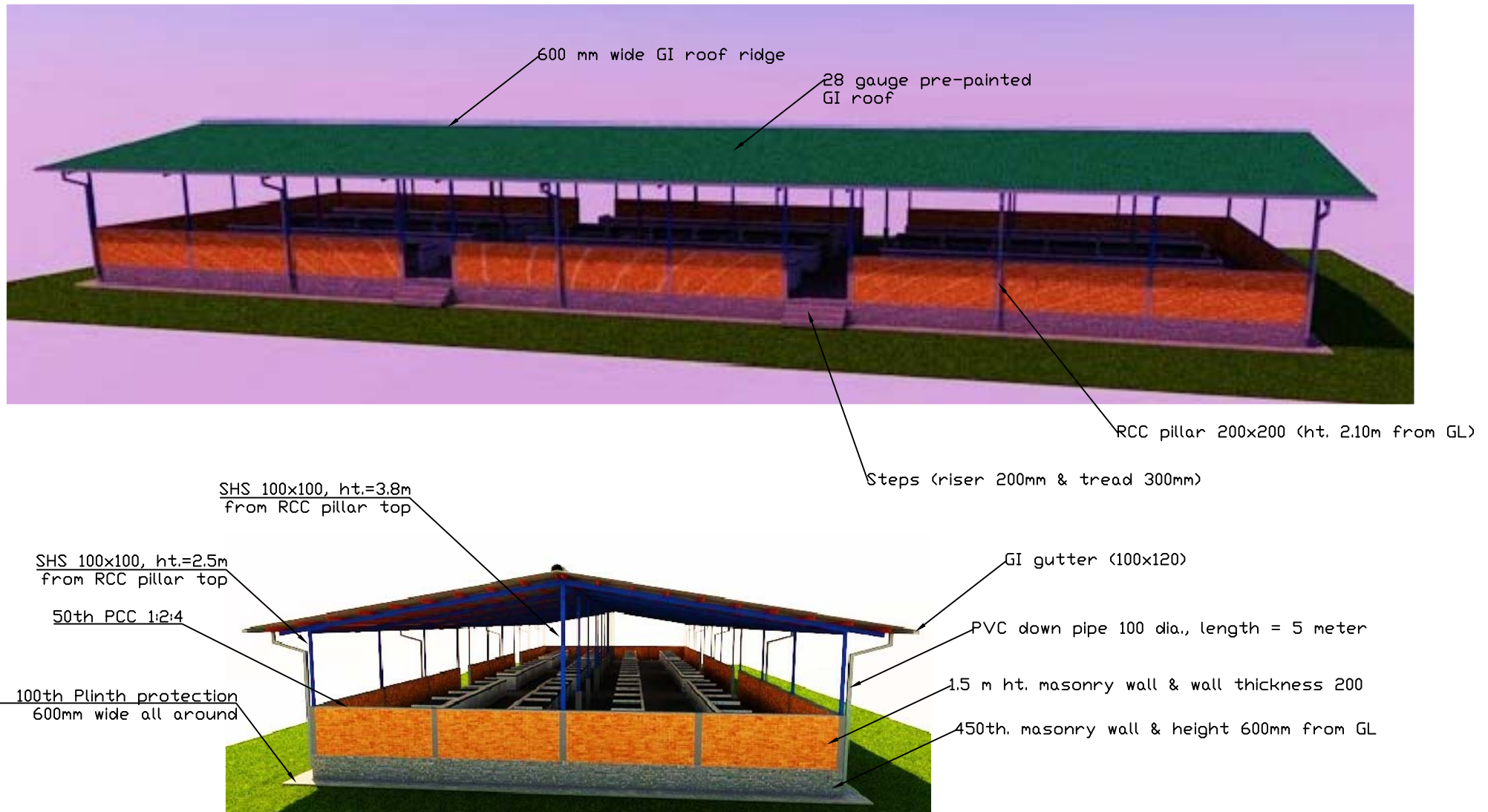




# Market Shed Plan

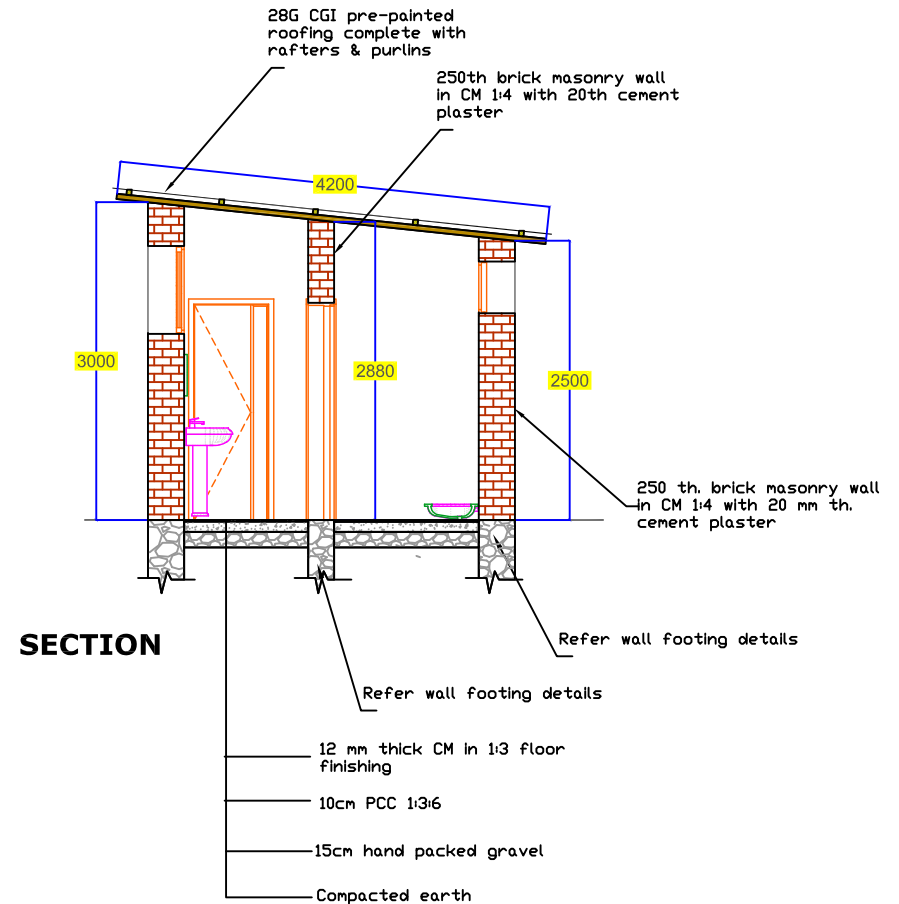
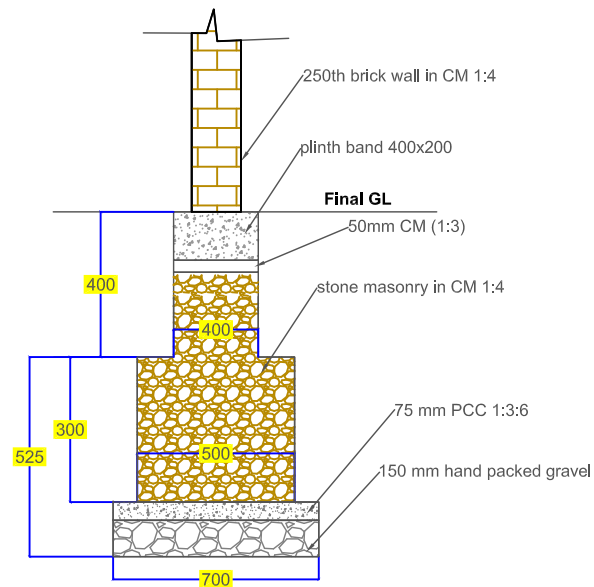
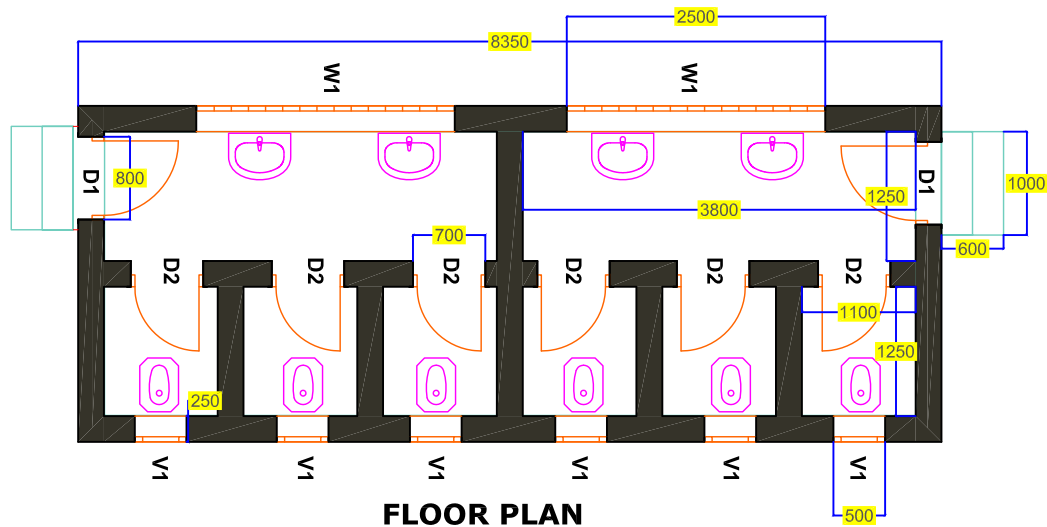
SCALE	NTS		Market Shed at Rejaf, Juba, South Sudan	Drawing Name	Revisions	PROJECT REQUESTED BY:	APPROVED BY:
DESIGNED BY	UNDP CSAC Engineer			Floor Plan of the Market Shed			
DRAWN BY	UNDP CSAC Engineer		Community Security & Arms Control (CSAC)	Drawing No. MS 1.0			
DATE	August 2016			Sheet No. 1.0		Juba, South Sudan	Judy Wakahiu Project Manager




<b>SCALE</b>	NTS		<b>Market Shed at Rejaf, Juba, South Sudan</b>	<b>Drawing Name</b>	<b>Revisions</b>	<b>PROJECT REQUESTED BY:</b>	<b>APPROVED BY:</b>
<b>DESIGNED BY</b>	UNDP CSAC Engineer			3D View of Market Shed			
<b>DRAWN BY</b>	UNDP CSAC Engineer		Community Security & Arms Control (CSAC)	<b>Drawing No. MS 2.0</b>		Juba, South Sudan	Judy Wakahiu Project Manager
<b>DATE</b>	August 2016			<b>Sheet No. 2.0</b>			



<b>SCALE</b>	NTS		<b>Market Shed at Rejaf, Juba, South Sudan</b>	<b>Drawing Name</b> 3D View of Market Shed Stalls & Roof Truss Materials	<b>Revisions</b>	<b>PROJECT REQUESTED BY:</b>	<b>APPROVED BY:</b>
<b>DESIGNED BY</b>	UNDP CSAC Engineer		Community Security & Arms Control (CSAC)	<b>Drawing No. MS 3.0</b>		Juba, South Sudan	Judy Wakahiu Project Manager
<b>DRAWN BY</b>	UNDP CSAC Engineer			<b>Sheet No. 3.0</b>			
<b>DATE</b>	August 2016						



**Note:**  
 1.0 All dimensions are in MM  
 2.0 Drawing not to Scale. Follow written dimensions

<b>SCALE</b>	NTS		<b>Toilet Block for Market Shed at Rejaf, Juba, South Sudan</b>  Community Security & Arms Control (CSAC)	<b>Drawing Name</b> Floor Plan, Section & Footing Detail of Toilet Block	<b>Revisions</b>	<b>PROJECT REQUESTED BY:</b>	<b>APPROVED BY:</b>
<b>DESIGNED BY</b>	UNDP CSAC Engineer						
<b>DRAWN BY</b>	UNDP CSAC Engineer			<b>Drawing No.TB 1.0</b>			
<b>DATE</b>	August 2016			<b>Sheet No. 1.0</b>		Juba, South Sudan	Judy Wakahiu Project Manager





Ventilation 2.5x1.2 m (25 mm square bar @ 120 c/c both ways)

Plinth wall - 600 mm height & 450 mm thick


28G CGI pre-painted roofing complete with rafters & purlins

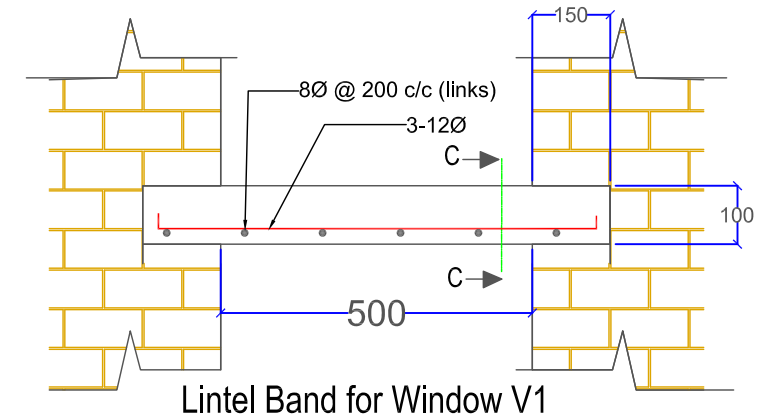
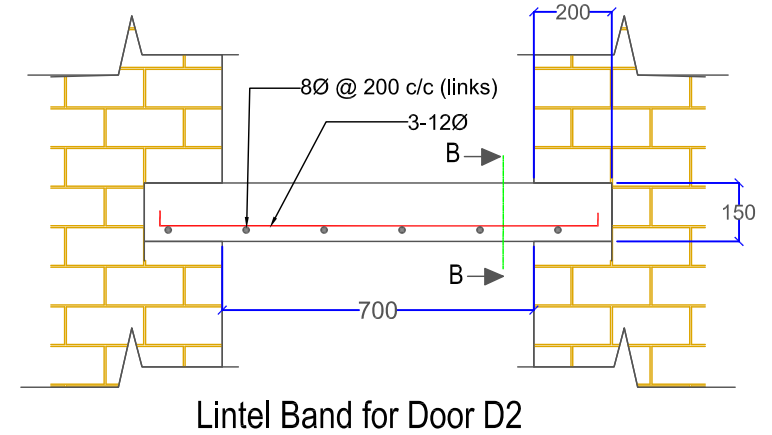
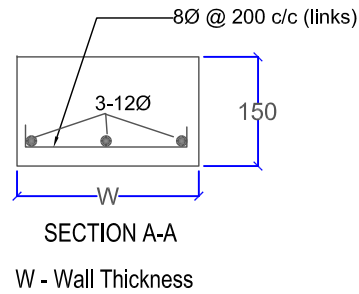
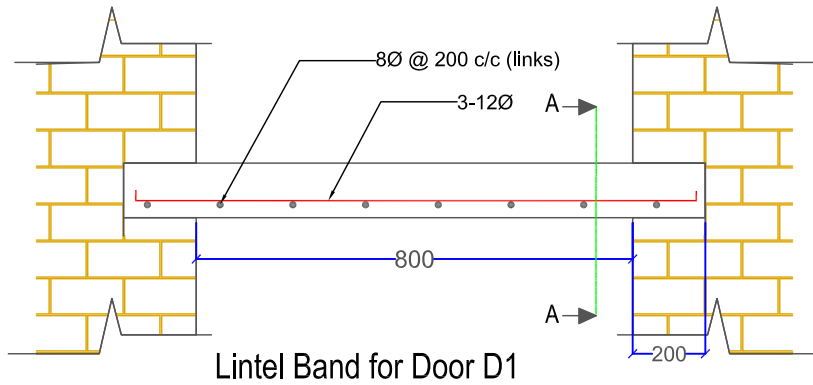
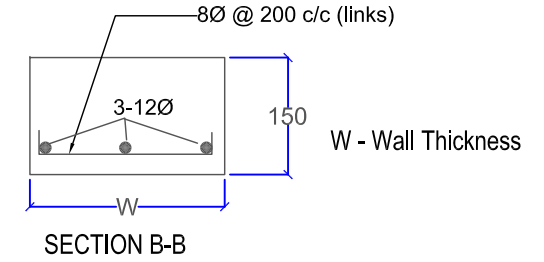
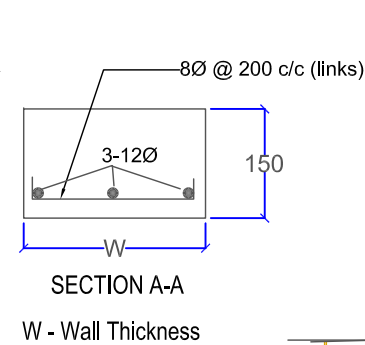
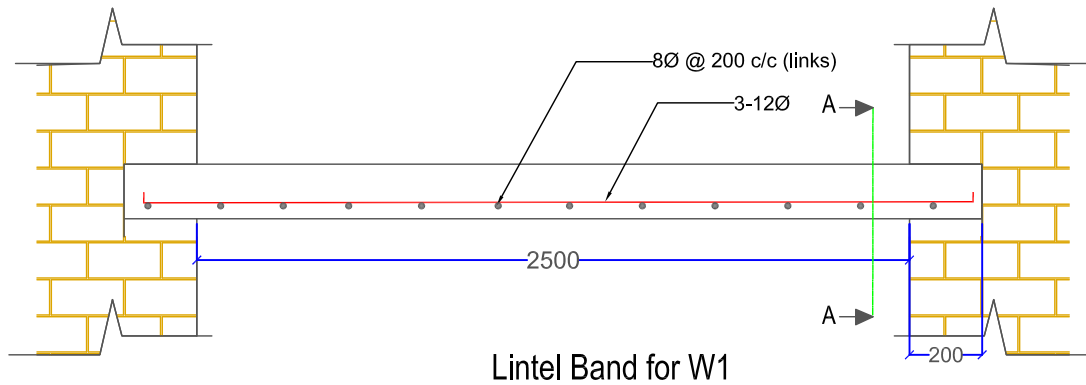
PVC ventilator 0.5 m x 0.5 m




Door D1 (Metal Door) 0.8 m x 2.1 m

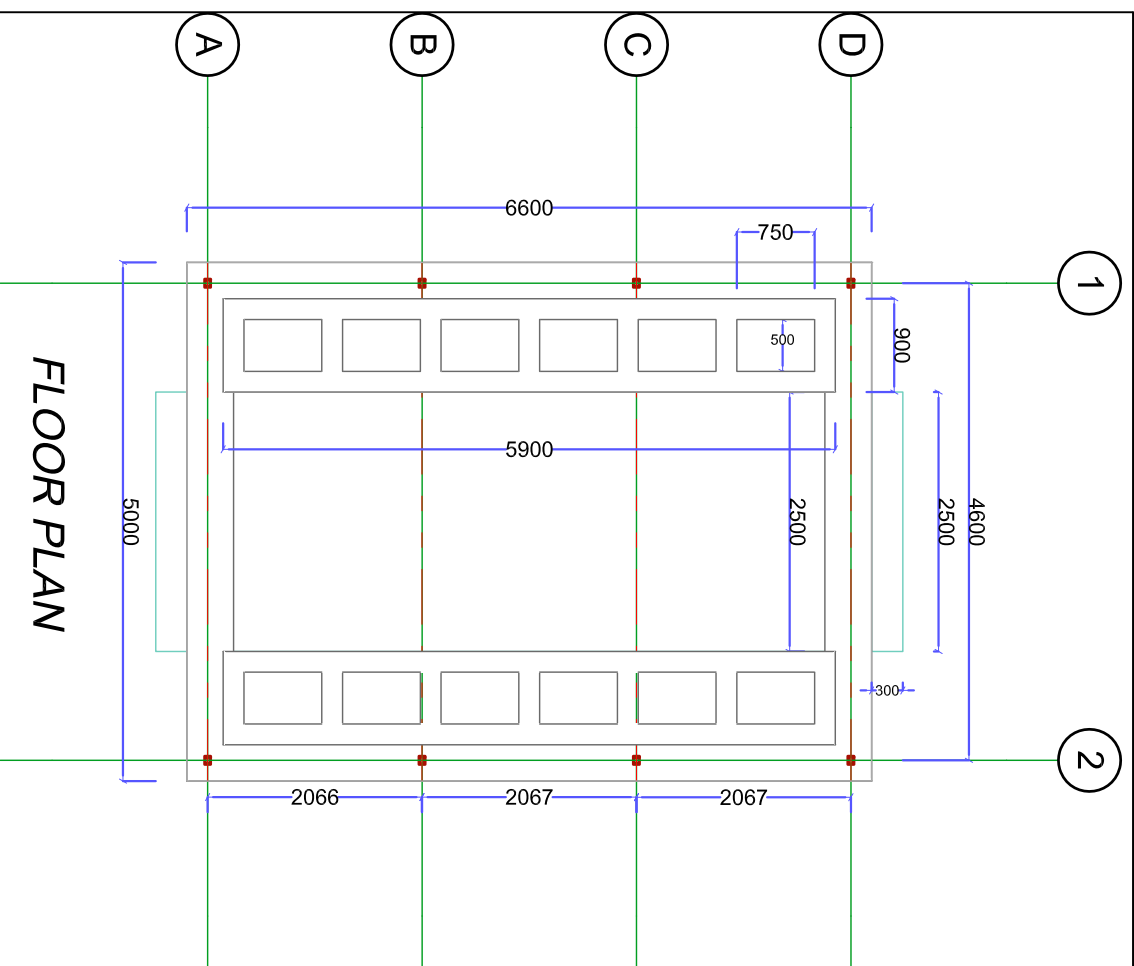
Step (1.0 m wide) with 200 mm riser & 300 mm treads

<b>SCALE</b>	NTS		<b>Toilet Block for Market Shed at Rejaf, Juba, South Sudan</b>	<b>Drawing Name</b> 3D VIEWS	<b>Revisions</b>	<b>PROJECT REQUESTED BY:</b>	<b>APPROVED BY:</b>
<b>DESIGNED BY</b>	UNDP CSAC Engineer						
<b>DRAWN BY</b>	UNDP CSAC Engineer			<b>Drawing No. TB 3.0</b>			
<b>DATE</b>	August 2016		Community Security & Arms Control (CSAC)	<b>Sheet No. 3.0</b>		Juba, South Sudan	Judy Wakahiu Project Manager




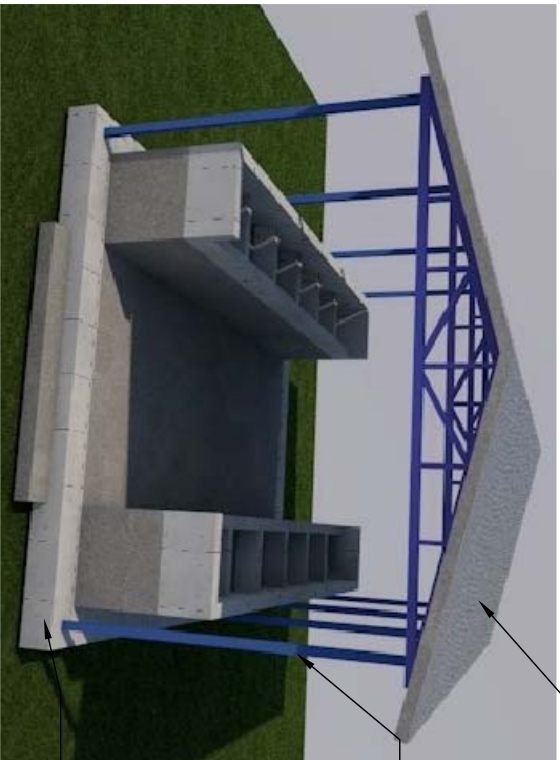
**Note:**  
1.0 All dimensions are in MM  
2.0 Drawing not to Scale. Follow written dimensions

<b>SCALE</b>	NTS		<b>Toilet Block for Market Shed at Rejaf, Juba, South Sudan</b>	<b>Drawing Name</b> Floor Plan, Section & Footing Detail of Toilet Block	<b>Revisions</b>	<b>PROJECT REQUESTED BY:</b>	<b>APPROVED BY:</b>
<b>DESIGNED BY</b>	UNDP CSAC Engineer						
<b>DRAWN BY</b>	UNDP CSAC Engineer		Community Security & Arms Control (CSAC)	<b>Drawing No. TB 2.0</b>		Juba, South Sudan	Judy Wakahiu Project Manager
<b>DATE</b>	August 2016			<b>Sheet No. 2.0</b>			



**Note:**  
1.0 All dimensions are in MM  
2.0 Drawing not to Scale. Follow written dimensions

SCALE	NTS	 <b>Vegetable Washing Area for Market Shed at Refaj, Juba, South Sudan</b>	<b>Community Security &amp; Arms Control (CSAC)</b>		<b>Drawing Name</b> Floor Plan & 3D Views  <b>Revisions</b>  <b>PROJECT REQUESTED BY:</b> Juba, South Sudan <b>APPROVED BY:</b> Judy Wakahiu Project Manager
DESIGNED BY	UNDP CSAC Engineer				
DRAWN BY	UNDP CSAC Engineer				
DATE	August 2016				



28G CGI roofing pre-painted over rafter RHS 60x40x3 & purlins SHS 40x40x3 @ 1.2m c/c

RHS 80x60x4, ht. 2.7 m

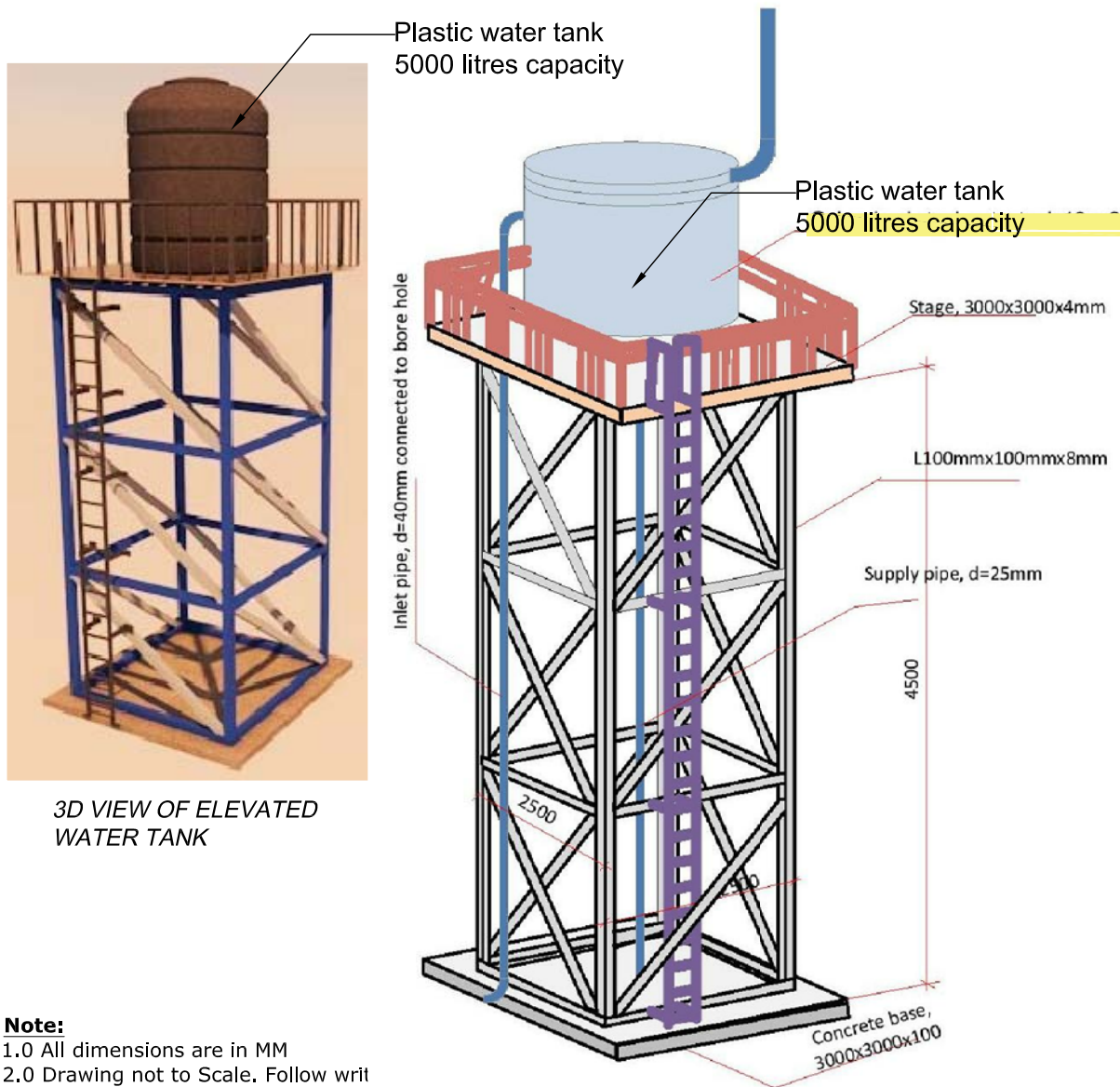
Concrete platform 30 cm high



Brass water tap  $\frac{1}{2}$  inch

RCC M20 120 mm thick

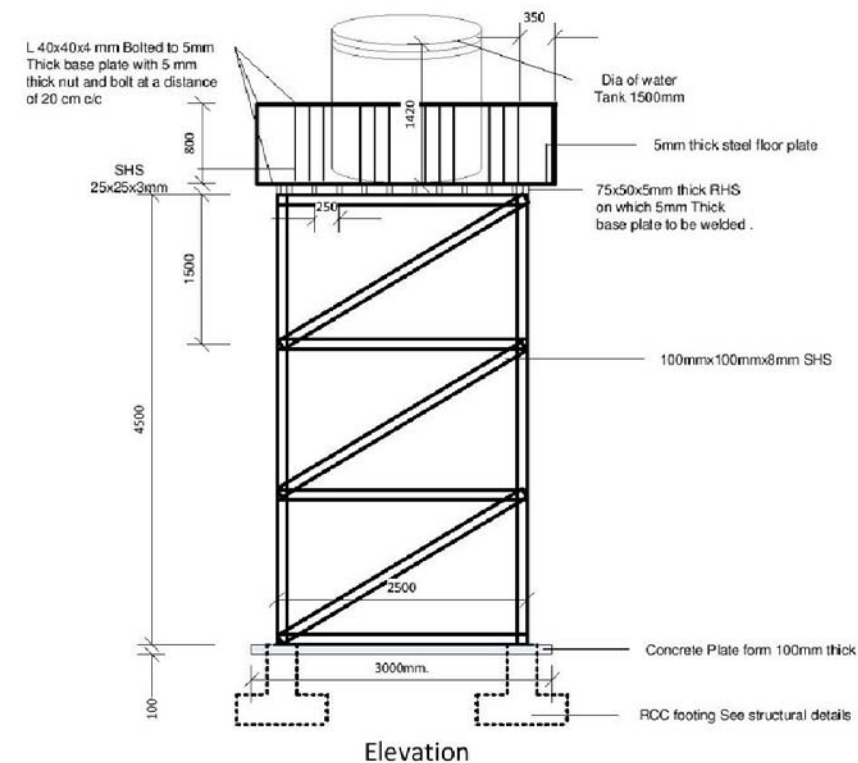
Masonry step with 20mm cement plaster in 1:3




3D VIEW OF ELEVATED  
WATER TANK

**Note:**

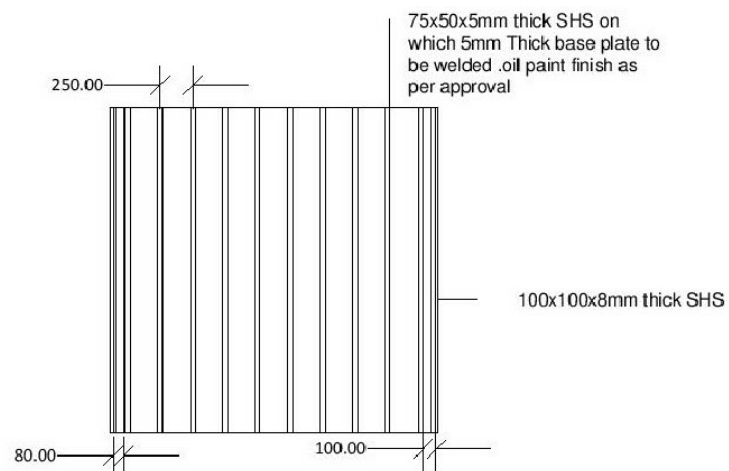
- 1.0 All dimensions are in MM
- 2.0 Drawing not to Scale. Follow writ dimensions



<b>SCALE</b>	NTS		<b>Elevated Water Tank for Market Shed at Rejaf, Juba, South Sudan</b>	<b>Drawing Name</b>	<b>Revisions</b>	<b>PROJECT REQUESTED BY: APPROVED BY:</b>	
<b>DESIGNED BY</b>	UNDP CSAC Engineer			<b>3D Views &amp; Other Details</b>			
<b>DRAWN BY</b>	UNDP CSAC Engineer			<b>Drawing No. WT 1.0</b>			
<b>DATE</b>	August 2016			<b>Sheet No. 1.0</b>		Juba, South Sudan	Judy Wakahiu Project Manager

Community Security & Arms Control (CSAC)

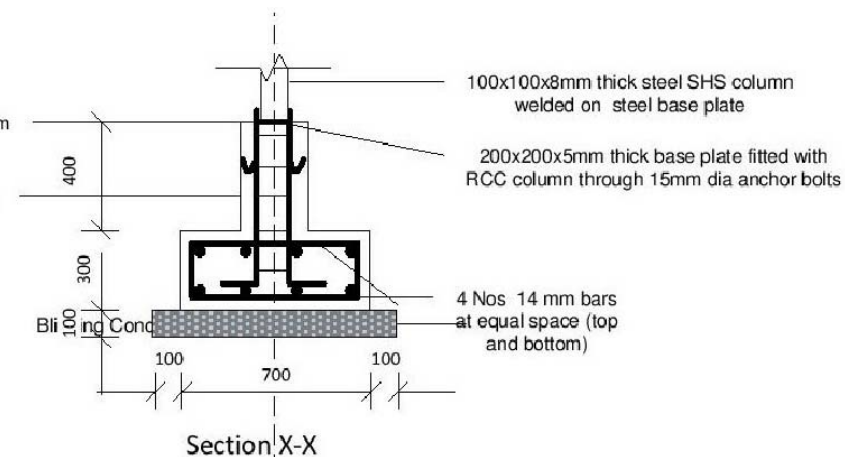




Plan of Steel Tower

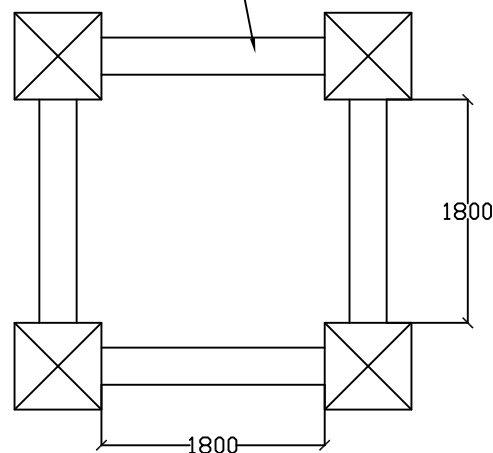
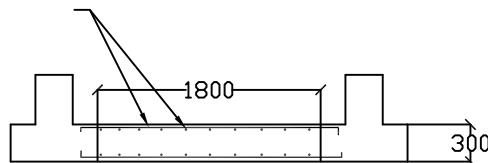
15 mm dia anchor bolts 150mm in length

250x250x400mm RCC column with 4Nos 12mm bars and 8mm stirrups at 200mm c/c

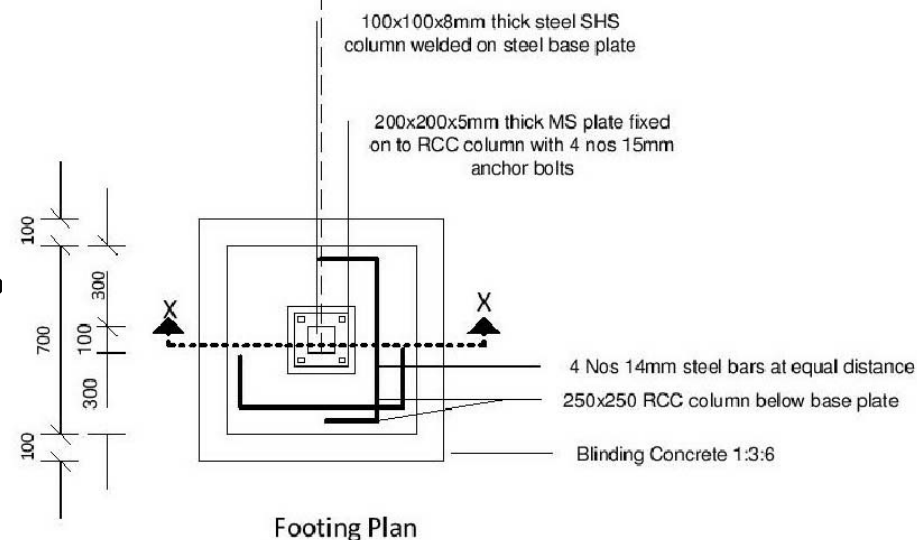


Strap beam 300x300

12 mm  $\phi$  tor steel both ways @ 150 c/c on top & bottom face of the beam




PLAN SHOWING STRAP BEAM CONNECTIONS



**Note:**

- 1.0 All dimensions are in MM
- 2.0 Drawing not to Scale. Follow written dimensions

<b>SCALE</b>	NTS		<b>Elevated Water Tank for Market Shed at Rejaf, Juba, South Sudan</b>	<b>Drawing Name</b> Footing Details & Plan of Steel Tower	<b>Revisions</b>	<b>PROJECT REQUESTED BY:</b>	<b>APPROVED BY:</b>
<b>DESIGNED BY</b>	UNDP CSAC Engineer						
<b>DRAWN BY</b>	UNDP CSAC Engineer		Community Security & Arms Control (CSAC)	<b>Drawing No.</b> WT 2.0			
<b>DATE</b>	August 2016			<b>Sheet No.</b> 2.0		Juba, South Sudan	Judy Wakahiu Project Manager