



ITB-2016-205

Addendum No. 2 dated 8 September 2016

Addendum No.2

ITB-2016-205: Rehabilitation of Maqam en-Nabi Musa in Jericho Governorate

Issue Date: 17 August 2016

Closing date & time : 19 September 2016 @ 2:00 PM (Jerusalem Time)

Extension of Deadline for Submission of Bids : 29 September 2016 @ 2:00 PM (Jerusalem Time)

This correspondence pertaining to the above-mentioned project should be considered as Addendum No. 2 to the Invitation to Bid (ITB-2016-205), which shall be deemed to form and be read as part of the tender.

Below please find the UNDP/PAPP clarifications and an official reply to all the received inquiries :

QUESTION No. 1:	Kindly be informed that Corten steel to be used in Section 11 Fixed Furniture Works is not available in the local market nor in Israel and since the needed quantity [is] small please confirm that hot dip galvanized steel is an approved alternative.
REPLY No. 1:	Dip Galvanized Steel is approved as an alternative for Corten Steel, only if painted and finished appropriately to appear as Corten Steel.
QUESTION No. 2:	Item 11-1 The place (Maqam) Museum, the drawings for item a, b, & c are missing; please supply us such drawings.
REPLY No. 2:	Please check attached Drawings R6, R7.
QUESTION No. 3:	Item 11-2 Environmental Center (Indoor spaces), Kindly supply us detailed drawings for each sub items a-k since there are no detailed information in the tender drawings to be used in pricing process.
REPLY No. 3:	A + D + F + H, Check Details EC03 Panel Board, EC07 Panel Board B, Check Details EC03 Metal Stand, EC07 Metal Stand C, Check Details EC05, EC06, EC08 Working Table G + I + J + K, All units are in No. instead of MR, Check attached Drawing R8
QUESTION No. 4:	Item 11-3 Environmental Center (Outdoor spaces); (a) Sub Item a; detailed drawings for the standing panel at the entrance are missing, please supply. (b) Sub Item b; plants pot shown in details No LD01 differ than item description, please clarify and supply us more details. (c) Sub Item d; please supply us more details showing metal and wood



ITB-2016-205

Addendum No. 2 dated 8 September 2016

	<p>sizes including the distance between construction profiles.</p> <p>(d) Sub Item e; please clarify what is meant by M6 (unit) and specify what is the diameter and type of steel rope.</p> <p>(e) Sub Item g, h, & i; please supply us more details showing metal and wood sizes including the distance between construction profiles.</p> <p>(f) Sub Item j; please specify the thickness of 15x15 cm bars and the 5x2 cm bars and supply us a plan showing the distance between bars 5x2 cm.</p>
REPLY No. 4:	<p>(a) Check attached Drawing R8</p> <p>(b) Check Details LD01 Typical Landscape Details, EC08, CD19 with Ground Floor Plan</p> <p>(c) Check Details EC05, EC06, EC07, EC08</p> <p>(d) Unit is MR, Hot dip galvanized steel and pre-stretched, Diameter 5mm</p> <p>(e) Check attached Details R8,R9</p> <p>(f) F. 15x15 bars and 5x2 bars thicknesses are 3.75 MM , distance between bars is 30cm</p>
QUESTION No. 5:	Item 11-4 Cultural Center sub item c; please specify type of wood to be used and supply us [with] AutoCad drawing for bench to enable us to calculate the needed area.
REPLY No. 5:	Type of Wood Sawed, Check Detail R10
QUESTION No. 6:	What is the required Grade? One (A) or Grand One (B)?
REPLY No. 6:	Contractors with Grade One (B) and Grade One (A) are both eligible to submit.
QUESTION No. 7:	Kindly extend the deadline of clarifications, since the PCU was boycotting all tenders, we need time to study bid and visit site to be able to ask questions needed to clarifications
REPLY No. 7:	We cannot extend the deadline to receive clarifications any further; the project has a tight timeframe.
QUESTION No. 8:	Item 8-2-1 the galvanized steel door, we need a detail section in door for each item 8-2-1 a to 8-2-1- f
REPLY No. 8:	Check Detail R2, sent in Addendum No. 1 and posted on the website.
QUESTION No. 9:	Item 9-1 Tensile Structure you previously provided names of suppliers from Jordan an equivalent locally could be provided , is this ok ?
REPLY No. 9:	Yes; equivalent tensile structures are accepted.
QUESTION No. 10:	Regarding the international expert , can the expert have a Palestinian ID and a Palestinian citizen but he has international expert certificate and meet the requirement? this is to say he is local citizen not an international citizen
REPLY No. 10:	The required international expert is not a local citizen; This expert shall have an

United Nations Development Programme

Programme of Assistance to the Palestinian People

برنامج الأمم المتحدة الإنمائي / برنامج مساعدة الشعب الفلسطيني



50
YEARS

Empowered lives. Resilient nations.

ITB-2016-205

Addendum No. 2 dated 8 September 2016

	international proved knowledge and experience in the cultural heritage field.
QUESTION No. 11:	Regarding bid guarantee is 50,000 Dollars, since B.O.Q in shekels now , any changes to guarantee currency or it remains to be done as 50,000 Dollars , no matter submitted bid in shekel ?
REPLY No. 11:	The bid security shall be submitted in United States Dollars only.
QUESTION No. 12:	We are a local contracting company grade 1A , we will do a J.V with mechanical company grade 1 and another electrical company grade 1 is this equivalent to qualification required?
REPLY No. 12:	Yes.
QUESTION No. 13:	in case of the J.V bid guarantee must be in the name of the J.V or in the name of the leader of the J.V
REPLY No. 13:	It depends on the terms and conditions of the joint venture agreement between the two parties.

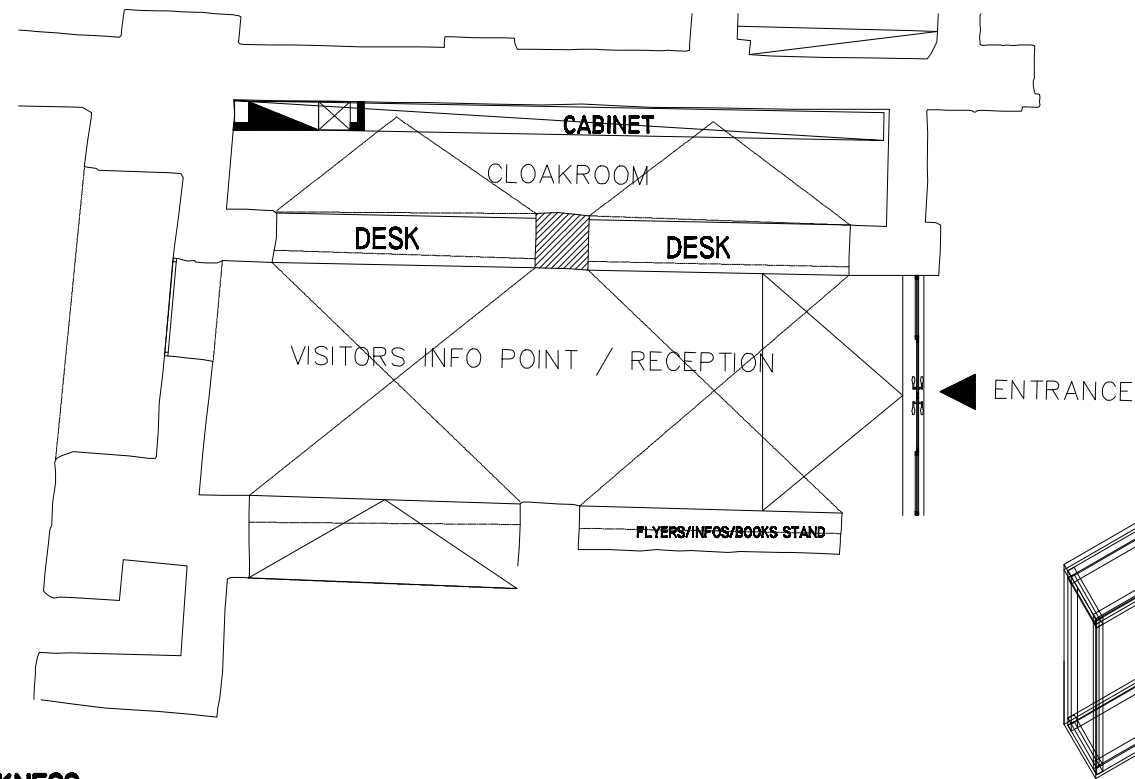
Contractors are required to sign and stamp this addendum and to include it in their bids.

For your kind attention and reference,

Khaled Shahwan

Deputy Special Representative
(Operations) - UNDP/PAPP

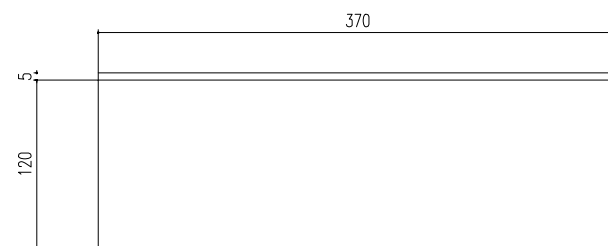




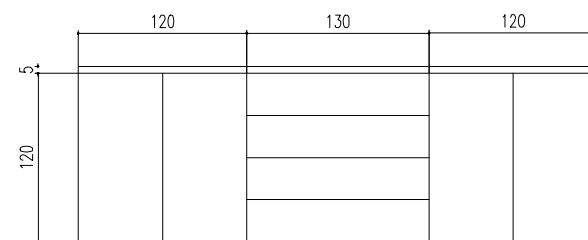
RECEPTION

STEEL SHEET COATING 2 MM THICKNESS
STEEL TUBULAR 50x50 MM CHASSIS
SCALE 1:50

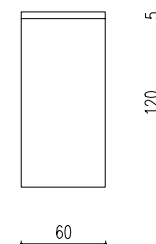
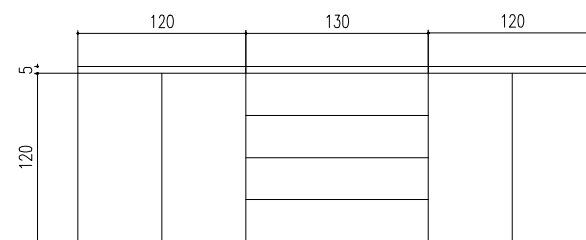
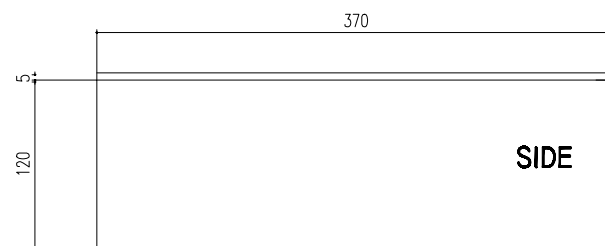
FRONT (OUT)



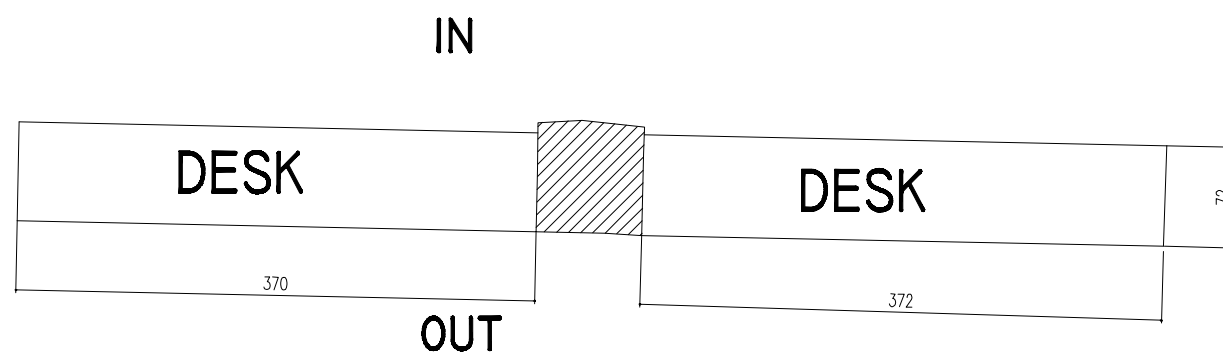
FRONT (IN)



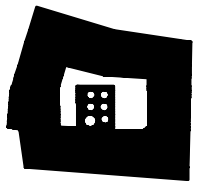
OAK WOOD



TOP



NOTES & LEGEND:



PROJECT:
Securing Professional Services for the
Architectural Restoration and
Rehabilitation Design, Archaeological
Documentation and Orientation Trail
including Tender Documents Preparation
and Site Supervision for Conservation and
Rehabilitation Works of Masque Al-Maslouh
Museum in Jericho Governorate
Support to Development of Cultural Tourism

DESIGN TEAM:
jdc - Jerusalem Design Center
ARCHITECTURAL WORKS:
- Eng. Michael Al-Hariri
ENGINEERING WORKS:
- Elita Mechanical Consultants

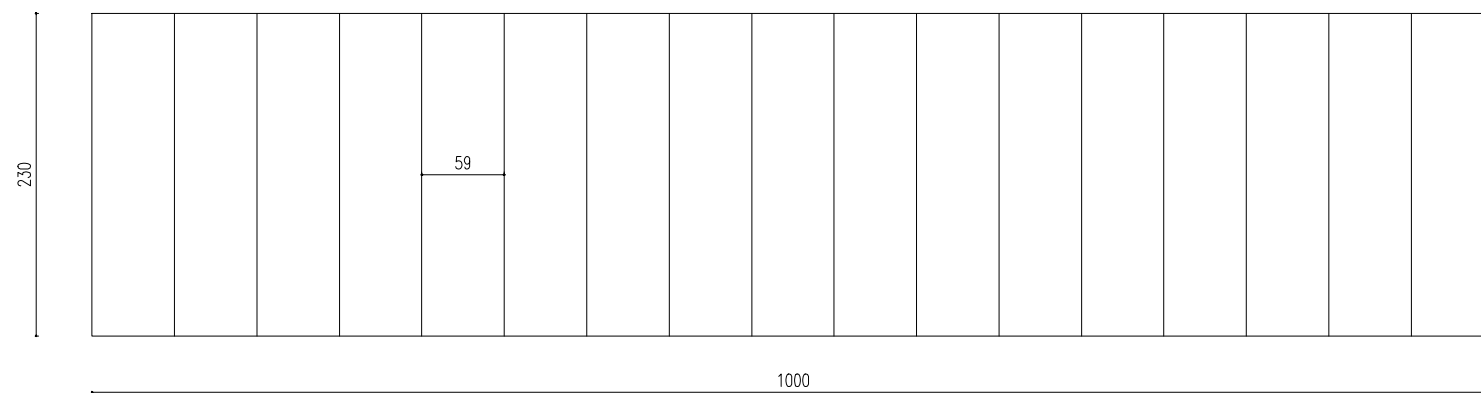
REVISIONS:
NO. DATE DESCRIPTION
1 15/05/2024 R6

Jerusalem Design Center
Architects, Engineers & Consultants
Phone: 02 234 3036 | Fax: 02 234 3710 | Email: info@jdc.ps

RECEPTION CABINET

STEEL SHEET COATING 2 MM THICKNESS
STEEL TUBULAR 50x50 MM CHASSIS
WOOD COATING 40 MM ON TOP

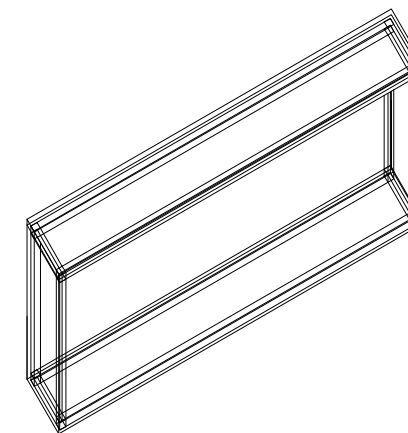
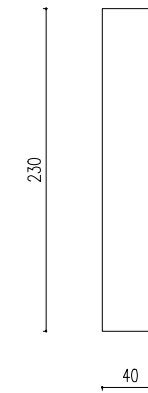
FRONT



TOP
CABINET



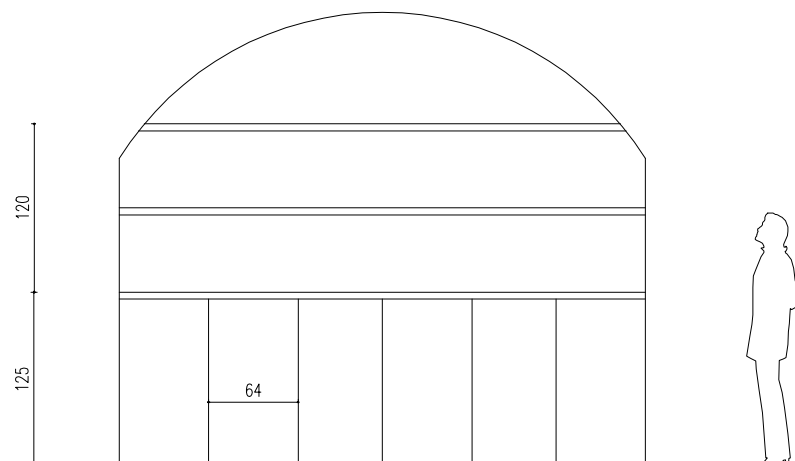
SIDE



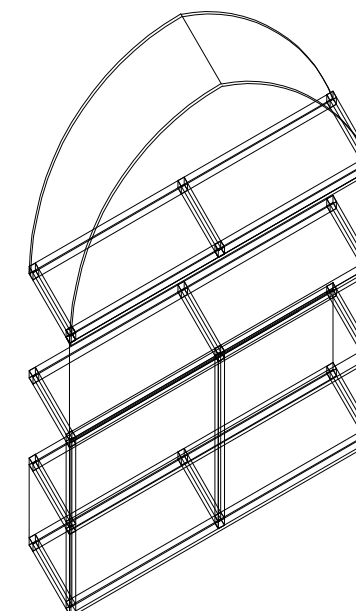
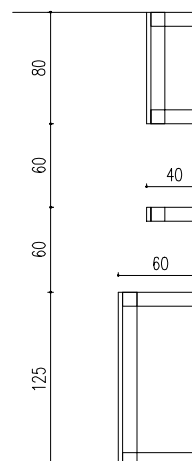
FLYERS AND BOOKS STAND (EXAMPLE)

STEEL SHEET COATING 2 MM THICKNESS
STEEL TUBULAR 50x50 MM CHASSIS

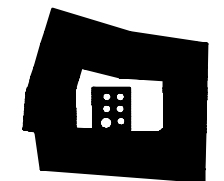
FRONT



SIDE



NOTES & LEGEND:



PROJECT:
Securing Professional Services for the
Architectural Restoration and
Rehabilitation Design, Archaeological
Documentation and Orientation Trail
Including Tender Documents Preparation
and Site Supervision for Conservation and
Rehabilitation Works of Mosque Al-Madani
Monument in Jericho Governorate
Support to Development of Cultural Tourism

DESIGN TEAM:
JDC - Jerusalem Design Center

ELECTRICAL WORKS:
- Eng. Yehuda Aluf

ARCHITECTURAL WORKS:
- Mr. Yehuda Aluf

OTHER DATA:

REVISIONS:
1. Initial Design
2. Final Design
3. Final Design
4. Final Design
5. Final Design
6. Final Design
7. Final Design
8. Final Design
9. Final Design
10. Final Design

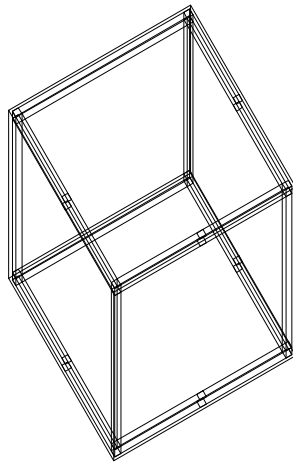
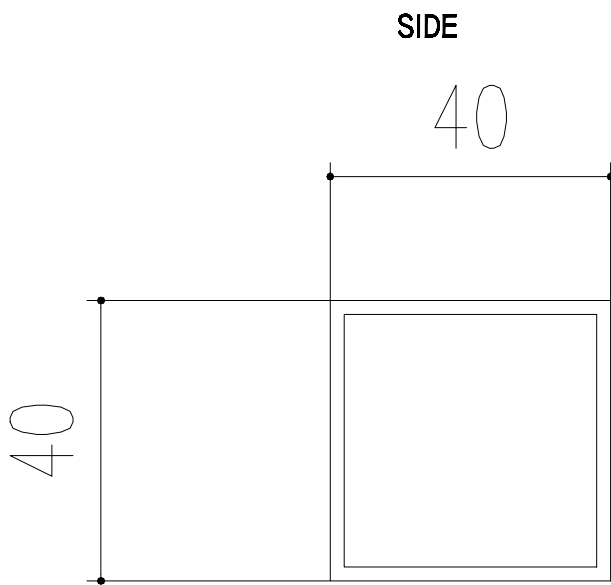
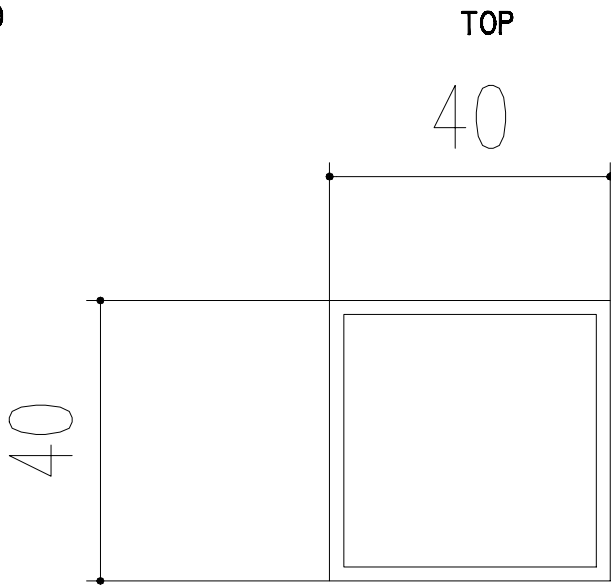
DATE: May-2016
PROJECT: R7
DESIGNER: JDC
ARCHITECT: JDC
ENGINEER: JDC
DATE: May-2016

Jerusalem Design Center
Architects, Engineers & Consultants
Phone: 02-234-3000 | Fax: 02-234-3770 | Email: info@jdc.co.il

CORTEN METAL SEAT

STEEL SHEET COATING 2 MM THICKNESS
STEEL TUBULAR 50x50 MM CHASSIS

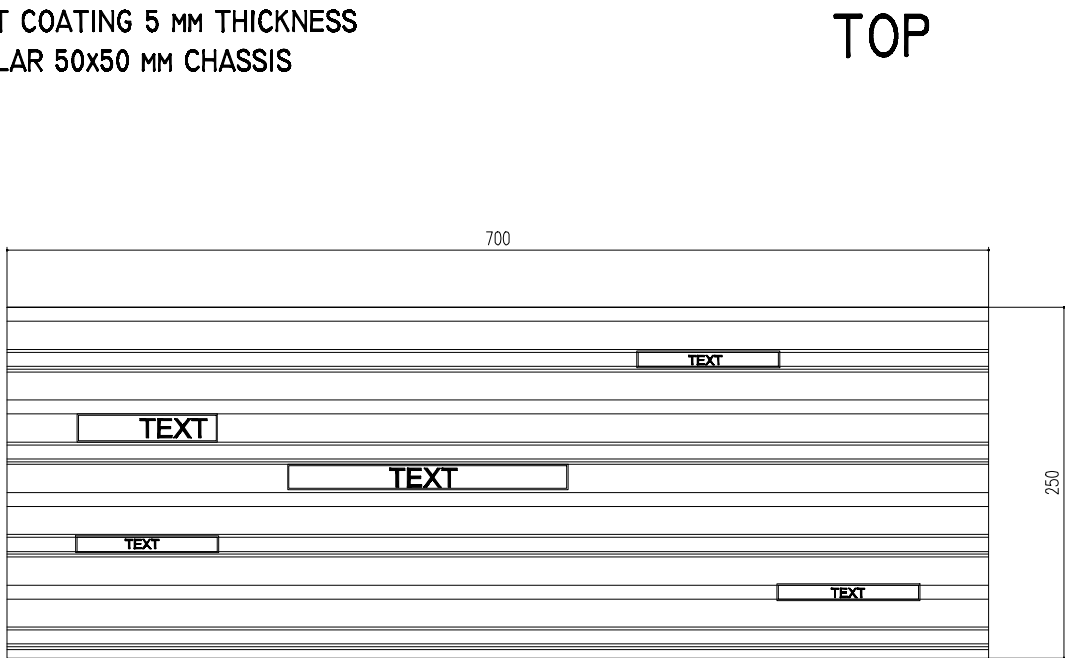
SCALE 1:10



CORTEN METAL PANEL

STEEL SHEET COATING 5 MM THICKNESS
STEEL TUBULAR 50x50 MM CHASSIS

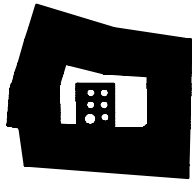
SCALE 1:50



SIDE



NOTES & LEGEND:



PROJECT:

Securing Professional Services for the Architectural Restoration and Rehabilitation Design, Archaeological Documentation and Orientation Trail, including Tender Documents Preparation and Site Supervision for Conservation and Rehabilitation Works of Masque Al-Melk Maus in Jericho Governorate

Support to Development of Cultural Tourism

DESIGN TEAM:

JDCC - Jerusalem Design Center

ELECTRICAL WORKS:

ELITE - Eng. Waleed Al-Hariri

LANDSCAPE WORKS:

ELITE - Eng. Waleed Al-Hariri

OTHER WORKS:

REVISIONS:

NO.	DESCRIPTION	DATE
1	For Review	
2	For Approval	
3	For Construction	
4	For Submission	

DATE: May-2024

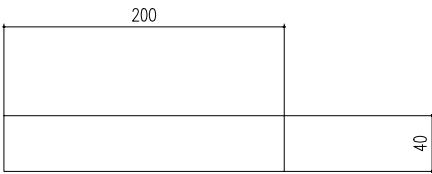
JDCC Jerusalem Design Center
Architects, Engineers & Consultants
Phone: 02-234-3036 | Fax: 02-234-3770 | Email: info@jdcc.co

WORKIND DESK

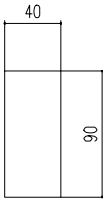
STEEL SHEET COATING 5 MM THICKNESS
STEEL TUBULAR 50x50 MM CHASSIS

SCALE 1:50

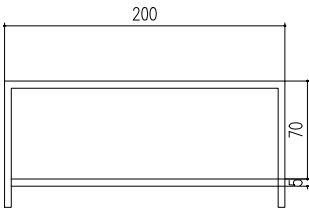
TOP



SIDE



FRONT

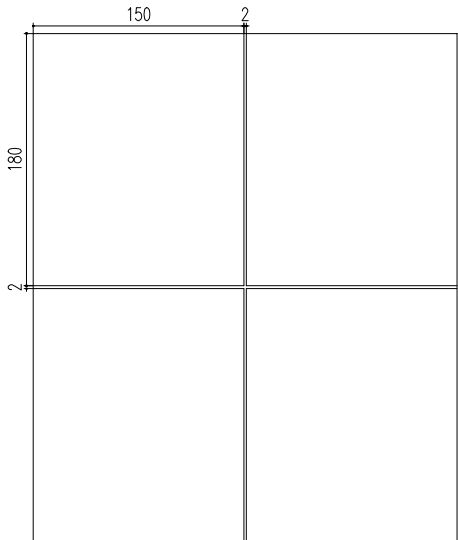


EXTERNAL STAGE

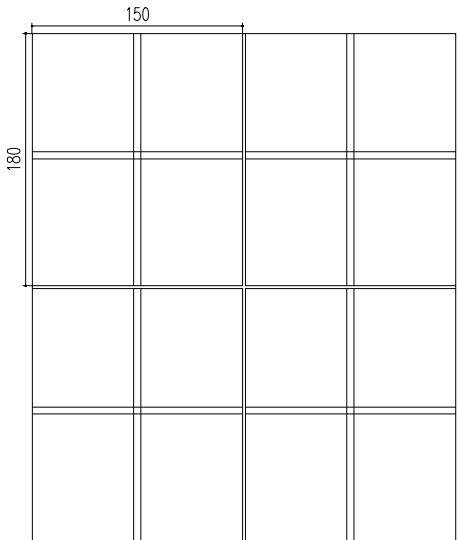
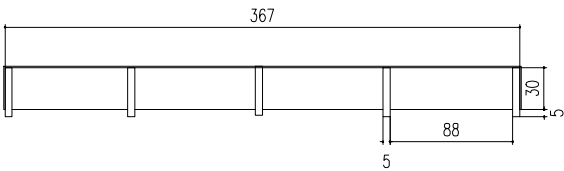
STEEL SHEET COATING 5 MM THICKNESS
STEEL TUBULAR 400x50 MM CHASSIS

SCALE 1:50

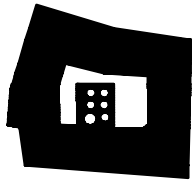
TOP



SIDE



NOTES & LEGEND:



PROJECT:
Securing Professional Services for the Architectural Restoration and Rehabilitation Design, Archaeological Documentation and Orientation Trail, including Tender Documents Preparation and Site Supervision for Conservation and Rehabilitation Works of Mosque Al-Madani in Jericho Governorate
Support to Development of Cultural Tourism

DESIGN TEAM:
JDTC - Jerusalem Design Center

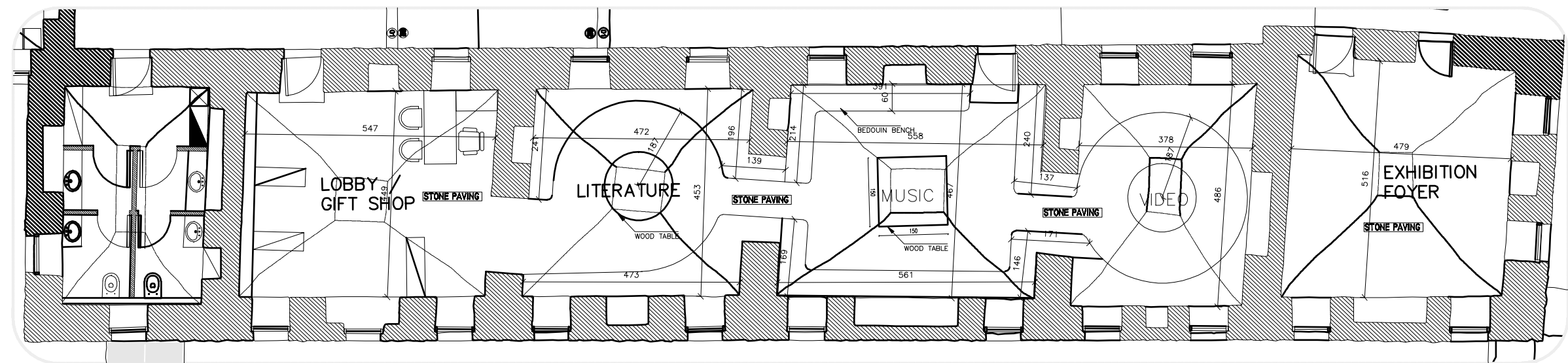
ELECTRICAL WORKS:
JDTC - Eng. Mikael Al-Hariri

LANDSCAPE WORKS:
JDTC - Alina Makhadmeh Consultants

CLIENT NAME:

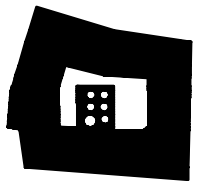
DATE: May-2024
REVISION:
REVISION: R9

JDTC Jerusalem Design Center
Architects, Engineers & Consultants
Phone: 02 234 3036 | Fax: 02 234 3770 | Email: info@jdtc.ps



SC2 CULTURAL CENTER-PLAN
Scale 1:100

NOTES & LEGEND:



PROJECT:
Securing Professional Services for the Architectural Restoration and Rehabilitation Design, Archaeological Documentation and Orientation Trail, including Tender Documents Preparation and Site Supervision for Conservation and Rehabilitation Works of Mosque Al-Madani in Jericho Governorate
Support to Development of Cultural Tourism

DESIGN TEAM:
jdc - Jerusalem Design Center

ELECTRICAL WORKS:
- Eng. Mikael Al-Hariri

LANDSCAPE WORKS:
- JMC Landscape Consultants

OTHER TEAM:

<p>REVISIONS:</p> <p>1. Particular</p> <p>2. Particular</p> <p>3. Particular</p> <p>4. Particular</p> <p>5. Particular</p> <p>6. Particular</p> <p>7. Particular</p> <p>8. Particular</p> <p>9. Particular</p> <p>10. Particular</p> <p>11. Particular</p> <p>12. Particular</p> <p>13. Particular</p> <p>14. Particular</p> <p>15. Particular</p> <p>16. Particular</p> <p>17. Particular</p> <p>18. Particular</p> <p>19. Particular</p> <p>20. Particular</p> <p>21. Particular</p> <p>22. Particular</p> <p>23. Particular</p> <p>24. Particular</p> <p>25. Particular</p> <p>26. Particular</p> <p>27. Particular</p> <p>28. Particular</p> <p>29. Particular</p> <p>30. Particular</p> <p>31. Particular</p> <p>32. Particular</p> <p>33. Particular</p> <p>34. Particular</p> <p>35. Particular</p> <p>36. Particular</p> <p>37. Particular</p> <p>38. Particular</p> <p>39. Particular</p> <p>40. Particular</p> <p>41. Particular</p> <p>42. Particular</p> <p>43. Particular</p> <p>44. Particular</p> <p>45. Particular</p> <p>46. Particular</p> <p>47. Particular</p> <p>48. Particular</p> <p>49. Particular</p> <p>50. Particular</p> <p>51. Particular</p> <p>52. Particular</p> <p>53. Particular</p> <p>54. Particular</p> <p>55. Particular</p> <p>56. Particular</p> <p>57. Particular</p> <p>58. Particular</p> <p>59. Particular</p> <p>60. Particular</p> <p>61. Particular</p> <p>62. Particular</p> <p>63. Particular</p> <p>64. Particular</p> <p>65. Particular</p> <p>66. Particular</p> <p>67. Particular</p> <p>68. Particular</p> <p>69. Particular</p> <p>70. Particular</p> <p>71. Particular</p> <p>72. Particular</p> <p>73. Particular</p> <p>74. Particular</p> <p>75. Particular</p> <p>76. Particular</p> <p>77. Particular</p> <p>78. Particular</p> <p>79. Particular</p> <p>80. Particular</p> <p>81. Particular</p> <p>82. Particular</p> <p>83. Particular</p> <p>84. Particular</p> <p>85. Particular</p> <p>86. Particular</p> <p>87. Particular</p> <p>88. Particular</p> <p>89. Particular</p> <p>90. Particular</p> <p>91. Particular</p> <p>92. Particular</p> <p>93. Particular</p> <p>94. Particular</p> <p>95. Particular</p> <p>96. Particular</p> <p>97. Particular</p> <p>98. Particular</p> <p>99. Particular</p> <p>100. Particular</p>	<p>REVISIONS:</p> <p>1. Particular</p> <p>2. Particular</p> <p>3. Particular</p> <p>4. Particular</p> <p>5. Particular</p> <p>6. Particular</p> <p>7. Particular</p> <p>8. Particular</p> <p>9. Particular</p> <p>10. Particular</p> <p>11. Particular</p> <p>12. Particular</p> <p>13. Particular</p> <p>14. Particular</p> <p>15. Particular</p> <p>16. Particular</p> <p>17. Particular</p> <p>18. Particular</p> <p>19. Particular</p> <p>20. Particular</p> <p>21. Particular</p> <p>22. Particular</p> <p>23. Particular</p> <p>24. Particular</p> <p>25. Particular</p> <p>26. Particular</p> <p>27. Particular</p> <p>28. Particular</p> <p>29. Particular</p> <p>30. Particular</p> <p>31. Particular</p> <p>32. Particular</p> <p>33. Particular</p> <p>34. Particular</p> <p>35. Particular</p> <p>36. Particular</p> <p>37. Particular</p> <p>38. Particular</p> <p>39. Particular</p> <p>40. Particular</p> <p>41. Particular</p> <p>42. Particular</p> <p>43. Particular</p> <p>44. Particular</p> <p>45. Particular</p> <p>46. Particular</p> <p>47. Particular</p> <p>48. Particular</p> <p>49. Particular</p> <p>50. Particular</p> <p>51. Particular</p> <p>52. Particular</p> <p>53. Particular</p> <p>54. Particular</p> <p>55. Particular</p> <p>56. Particular</p> <p>57. Particular</p> <p>58. Particular</p> <p>59. Particular</p> <p>60. Particular</p> <p>61. Particular</p> <p>62. Particular</p> <p>63. Particular</p> <p>64. Particular</p> <p>65. Particular</p> <p>66. Particular</p> <p>67. Particular</p> <p>68. Particular</p> <p>69. Particular</p> <p>70. Particular</p> <p>71. Particular</p> <p>72. Particular</p> <p>73. Particular</p> <p>74. Particular</p> <p>75. Particular</p> <p>76. Particular</p> <p>77. Particular</p> <p>78. Particular</p> <p>79. Particular</p> <p>80. Particular</p> <p>81. Particular</p> <p>82. Particular</p> <p>83. Particular</p> <p>84. Particular</p> <p>85. Particular</p> <p>86. Particular</p> <p>87. Particular</p> <p>88. Particular</p> <p>89. Particular</p> <p>90. Particular</p> <p>91. Particular</p> <p>92. Particular</p> <p>93. Particular</p> <p>94. Particular</p> <p>95. Particular</p> <p>96. Particular</p> <p>97. Particular</p> <p>98. Particular</p> <p>99. Particular</p> <p>100. Particular</p>
--	--

DATE: May-2016

REVISIONS:

1. Particular

2. Particular

3. Particular

4. Particular

5. Particular

6. Particular

7. Particular

8. Particular

9. Particular

10. Particular

11. Particular

12. Particular

13. Particular

14. Particular

15. Particular

16. Particular

17. Particular

18. Particular

19. Particular

20. Particular

21. Particular

22. Particular

23. Particular

24. Particular

25. Particular

26. Particular

27. Particular

28. Particular

29. Particular

30. Particular

31. Particular

32. Particular

33. Particular

34. Particular

35. Particular

36. Particular

37. Particular

38. Particular

39. Particular

40. Particular

41. Particular

42. Particular

43. Particular

44. Particular

45. Particular

46. Particular

47. Particular

48. Particular

49. Particular

50. Particular

51. Particular

52. Particular

53. Particular

54. Particular

55. Particular

56. Particular

57. Particular

58. Particular

59. Particular

60. Particular

61. Particular

62. Particular

63. Particular

64. Particular

65. Particular

66. Particular

67. Particular

68. Particular

69. Particular

70. Particular

71. Particular

72. Particular

73. Particular

74. Particular

75. Particular

76. Particular

77. Particular

78. Particular

79. Particular

80. Particular

81. Particular

82. Particular

83. Particular

84. Particular

85. Particular

86. Particular

87. Particular

88. Particular

89. Particular

90. Particular

91. Particular

92. Particular

93. Particular

94. Particular

95. Particular

96. Particular

97. Particular

98. Particular

99. Particular

100. Particular

DATE: May-2016