

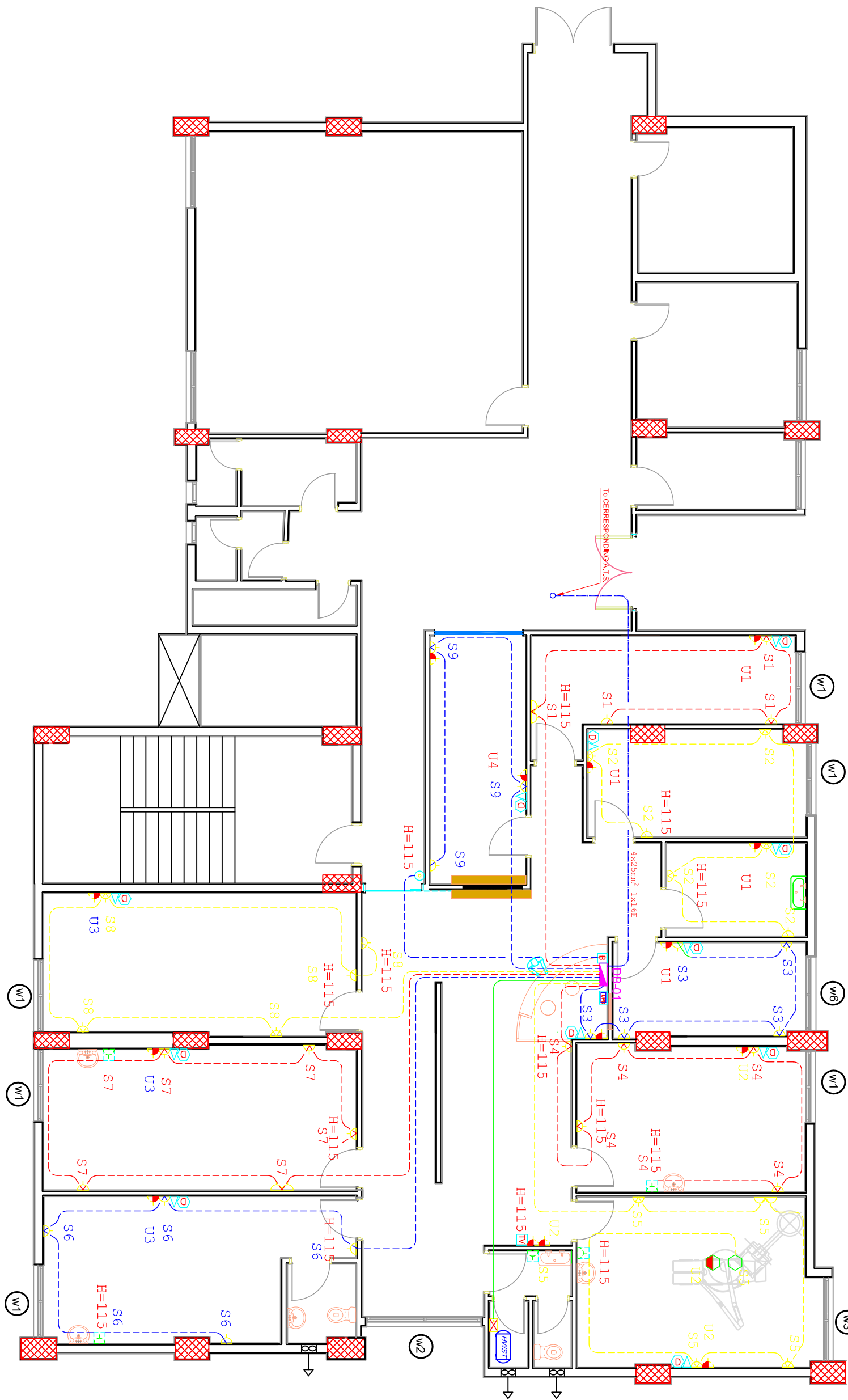
	Lighting type L1 (cold white lightLED, blue control, anti dust, embedded, 36 Lx48 W, UGR less than 19, 3100 Lm, color temperature 4000K, 0% flicker and 0% V emission), Led panel 500x500mm.
	Lighting type L2 (warm soft white light, 3100 Lm, color temperature 3000K), Led panel 60x90 cm
	Downlight type L3 white color (warm soft white light, 1000 Lm, color temperature 3000K) diametre 180 mm, 14-16 W
	Spot light dimmable, white color type L4 (warm soft white light, 300Lm, color temperature 3000K) diametre 600 mm, 7W
	Lighting type L6, water resistant false ceiling mounted light bolts
	Emergency Light, ceiling mounted Type EM Light (LedGrand or equivalent) Bloc autonome S8 COMBINE 8W 3H
	Exit light, Type EXIT Light (LedGrand or equivalent)

LEGEND

	CIRCUIT FOR LIGHTING INSTALLED IN A CONDUIT ø 20mm
SWITCHES	
	ONE-WAY, ONE GANG
	ONE-WAY , TWO GANG (a=b=CONTROLS FIXTURES DENOTED a OR b)
	TWO-WAY, ONE GANG
	TWO-WAY , TWO GANG

LEGEND

LOW VOLTAGE SYSTEMS: 220V/380V



	WALL MOUNTED SINGLE-PHASE SOCKET OUTLET RATED 16A/250V (H=0.5m U.O.I.).
	WATERPROOF WALL MOUNTED SINGLE-PHASE SOCKET OUTLET RATED 16A/250V (H=0.5m U.O.I.).
	WALL MOUNTED SINGLE-PHASE SOCKET OUTLET RATED 16A/250V FED BY UPS (FAMPERPROOF).
	WALL MOUNTED SINGLE-PHASE SOCKET OUTLET RATED 16A/250V CONTROLLED BY A SWITCH (H=0.5m U.O.I.).
	HIGH LEVEL WALL MOUNTED SINGLE-PHASE SOCKET OUTLET RATED 16A/250V FOR ACCESS POINT (H=2.40m U.O.I.).
	WALL MOUNTED SINGLE-PHASE SOCKET OUTLET RATED 20A/250V (H=0.4m U.O.I.), FOR DATA BACK.
	WATERPROOF (F668) FLOOR MOUNTED SINGLE-PHASE SOCKET OUTLET RATED 16A/250V.
	WATERPROOF (F668) FLOOR MOUNTED SINGLE-PHASE SOCKET OUTLET RATED 16A/250V FED BY UPS (FAMPERPROOF).
	CEILING OR WALL MOUNTED SINGLE-PHASE OUTLET BOX WITH DISCONNECT SWITCH RATED 20A/250V FOR SPLIT UNIT.
	CEILING MOUNTED SINGLE-PHASE OUTLET BOX WITH DISCONNECT SWITCH RATED 16A/250V FOR AUTOMATIC DOOR, FED FROM UPS.
	CEILING MOUNTED THREE-PHASE OUTLET BOX WITH DISCONNECT SWITCH RATED 40A/380V FOR CASSETTE TYPE CEILING MOUNTED.
	CEILING OR WALL MOUNTED SINGLE-PHASE OUTLET BOX WITH DISCONNECT SWITCH RATED 32A/250V FOR WATER HEATER.
	WALL MOUNTED OUTLET BOX FOR MOVEMENT DETECTOR (H=2.40m U.O.I.).
	WALL MOUNTED OUTLET BOX FOR BELL CHIME (SECONDARY ENTRANCE) (H=2.80m U.O.I.).
	WALL MOUNTED OUTLET BOX FOR BELL PUSH-BUTTON (H=1.15m U.O.I.).
	UNINTERRUPTED POWER SUPPLY.
	CIRCUIT COMPOSED OF THREE (3) INSULATED CONDUCTORS HAVING A SECTION OF 2.5mm2 EACH LEAD INSIDE RIGID P.V.C. CONDUIT (ø=20mm) WHEN INSTALLED IN SHAFT OR ABOVE FALSE CEILING AND LEAD FLEXIBLE POLYETHYLENE CONDUIT (ø=20mm) WHEN INSTALLED IN CONCRETE (WALL OR UNDER FLOOR SCREEN).
	SAME AS ABOVE BUT FED FROM UPS.
	SURFACE MOUNTED MULTICORE NON-ARMORED CABLE SIZE (4x25)mm2 PLUS ONE EARTH CONDUCTOR SIZE (1x16)mm2.
	L1,L2,L3... INDICATES THE REFERENCE OF A LIGHTING CIRCUIT.
	S1,S2,S3... INDICATES THE REFERENCE OF A SOCKET OUTLET CIRCUIT.
	AC1,AC2... INDICATES THE REFERENCE OF A SPLIT UNIT.
	obs... INDICATES THE SEQUENCE OF LIGHTING BETWEEN THE SWITCH AND THE CORRESPONDING LIGHT POINT.

EXTRA LOW VOLTAGE SYSTEMS 24V/12V

	LOCATION OF INTERMEDIATE DISTRIBUTION FRAME IN TELEPHONE SYSTEM.
	LOCATION OF THE ELECTRONIC PRIVATE AUTOMATIC BRANCH EXCHANGE FOR COMMON SERVICES.
	WALL MOUNTED TELEPHONE SOCKET OUTLET (RU11) (H=0.30m U.O.I.).
	CIRCUIT FOR TELEPHONE SYSTEM (RU4S, CAT6 CABLE UTP ø=25mm U.O.I.).
	LOCATION OF THE PATCH PANEL.
	WALL MOUNTED DATA SOCKET OUTLET (RU4S) (H=0.30m U.O.I.).
	HIGH LEVEL WALL MOUNTED DATA SOCKET OUTLET (RU4S) FOR ACCESS POINT IN "Wi-Fi" SYSTEM (H=2.40m OR ABOVE FALSE CEILING).
	CIRCUIT FOR DATA SYSTEM (ø=25mm U.O.I.).
	WALL MOUNTED SOCKET OUTLET FOR TV + SAT + FM IN SMART SYSTEM (H=0.5m U.O.I.).
	HIGH LEVEL WALL MOUNTED SOCKET OUTLET FOR TV + SAT + FM IN SMART SYSTEM (H=2.20m U.O.I.).
	CIRCUIT FOR SMART SYSTEM (ø=25mm U.O.I.).

KEY PLAN

THIS DRAWING IS A COPYRIGHT. DO NOT SCALE FROM THE DRAWING.
THE CONTRACTOR AND HIS SUB-CONTRACTORS ARE TO VERIFY ALL DIMENSIONS ON SITE BEFORE MAKING SHOP DRAWINGS OR COMMENCING MANUFACTURE.

United Nation Development Programme
UNDP Lebanon
Social and Local Development Programme
P.O.Box: 11-3216 Beirut, Lebanon
Tel: 961 1 962491

PROGRAMME:
Lebanese Host Communities
Support Programme
Support to Integrated Service
Supporting Host Communities
Provision at the Local Level

PROJECT NAME:
SDC - HEALTH CARE CENTER
KOBBEH - TRIPOLI

LEGEND:

NOTES:

0	---	---	GENERAL REVISION	---
REV BY	Date	Description	Appr.	
PROJECT NBR.	---			
PROJECT PHASE	TENDER			
DISCIPLINE	CIVIL ENGINEERING			
SECTOR				
BUILDING	ENG NADA ELHELOU			
DESIGNED				
DRAWN	---			
CHECKED	---			
APPROVED	---			
DATE	---			
SCALE	1/100			
SHEET SIZE	A1			
Title				

KOBBEH
TRIPOLI

Sheet 1 OF 1

S1601KR-PH1-SW-01-REV.0

Project Number Phase Type Drawing Number Revision