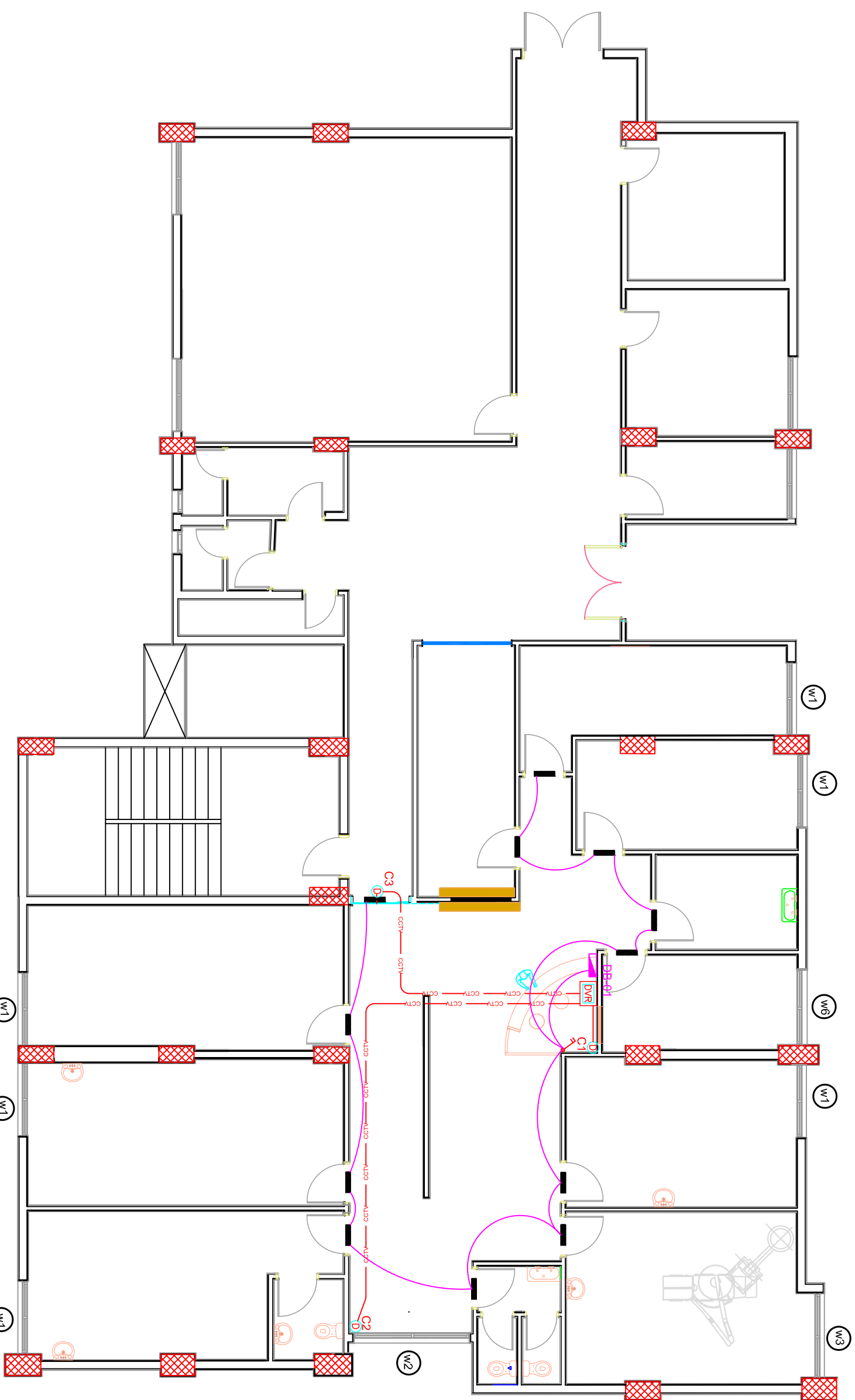


LEGEND

- LOCATION OF THE ADDRESSABLE FIRE ALARM CONTROL PANEL IN FIRE DETECTION AND ALARM SYSTEM (F.D.A.S.) (H=1.80m U.O.I.).
- CEILING OUTLET BOX FOR ADDRESSABLE AUTOMATIC SMOKE DETECTOR (OPTICAL) IN F.D.A.S.
- CEILING OUTLET BOX FOR ADDRESSABLE AUTOMATIC SMOKE DETECTOR (OPTICAL) FOR CEILING VOID AREA CONNECTED WITH LED INDICATOR IN F.D.A.S.
- CEILING OUTLET BOX FOR ADDRESSABLE AUTOMATIC HEAT DETECTOR (RATE OF RISE) IN F.D.A.S.
- WALL MOUNTED OUTLET BOX FOR ADDRESSABLE MANUAL STATION (BREAK-GLASS) IN F.D.A.S. (H=1.07 TO H= 1.22m U.O.I.).
- WALL MOUNTED OUTLET BOX FOR ELECTRONIC SOUNDER WITH LED FLASHER (90dB AT 1 METER) IN F.D.A.S. (H=2.2 TO H= 2.5m U.O.I.).
- WALL MOUNTED OUTLET BOX FOR BELL (SIREN) (90dB AT 1 METER) AND STROBE LIGHTING IN F.D.A.S. (H=1.80m U.O.I.).
- CEILING OR WALL MOUNTED BOX FOR ANALOGUE-ADDRESSABLE CONTROL MODULE IN F.D.A.S.
- CEILING OR WALL MOUNTED BOX FOR AN INTERFACE MODULE IN F.D.A.S.
- CEILING OR WALL MOUNTED BOX FOR INTERFACE INPUT/OUTPUT MODULE IN F.D.A.S.
- FIRE RESISTANT CIRCUIT FOR F.D.A.S. (ø=20mm U.O.I.).
- FIRE RETARDANT CIRCUIT FOR F.D.A.S. (ø=25mm U.O.I.).
- FIRE EXTINGUISHER

FIRE ALARM & SMOKE DETECTOR PLAN

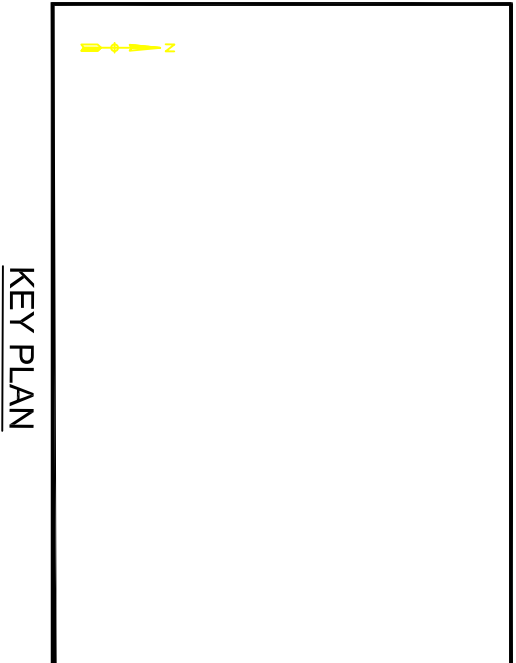


LEGEND

- WALL MOUNTED OUTLET BOX FOR DIGITAL VIDEO-RECORDER (DVR) IN CLOSED CIRCUIT FOR TELEVISION (C.C.T.V.) SYSTEM.
- MAIN DERIVATION BOX FOR CCTV SYSTEM.
- HIGH LEVEL WALL MOUNTED OUTLET BOX FOR WEATHERPROOF (IP66) CAMERA IN C.C.T.V. SYSTEM.
- CEILING MOUNTED OUTLET BOX FOR DOME CAMERA IN CCTV SYSTEM.
- CIRCUIT FOR IP C.C.T.V. SYSTEM (ø=25mm U.O.I.).
- PICTOGRAM EACH ROOM

EXTRA LOW VOLTAGE SYSTEMS 24V/12V

- LOCATION OF INTERMEDIATE DISTRIBUTION FRAME IN TELEPHONE SYSTEM.
- LOCATION OF THE ELECTRONIC PRIVATE AUTOMATIC BRANCH EXCHANGE FOR COMMON SERVICES.
- WALL MOUNTED TELEPHONE SOCKET OUTLET (R411) (H=0.30m U.O.I.).
- CIRCUIT FOR TELEPHONE SYSTEM (R445, CAT5 CABLE UTP ø=25mm U.O.I.).
- LOCATION OF THE PATCH PANEL.
- WALL MOUNTED DATA SOCKET OUTLET (R445) (H=0.30m U.O.I.).
- HIGH LEVEL WALL MOUNTED DATA SOCKET OUTLET (R445) FOR ACCESS POINT IN "WIFI" SYSTEM (H=2.40m OR ABOVE FALSE CEILING).
- CIRCUIT FOR DATA SYSTEM (ø=25mm U.O.I.).



THIS DRAWING IS A COPYRIGHT. DO NOT SCALE FROM THE DRAWING. THE CONTRACTOR AND HIS SUB-CONTRACTORS ARE TO VERIFY ALL DIMENSIONS ON SITE BEFORE MAKING SHOP DRAWINGS OR COMMENCING MANUFACTURE.

United Nation Development Programme
UNDP Lebanon
Social and Local Development Programme
P.O.Box: 11-3216 Beirut, Lebanon
Registered in Lebanon
Tel: 961 1 962491

PROGRAMME: Lebanese Host Communities
Support Programme
Support to Integrated Service
Provision at the Local Level

PROJECT NAME:
SDC -HEALTH CARE CENTER
KOBBEH - TRIPOLI

LEGEND:

NOTES:

0	---	GENERAL REVISION	---
REV	BY	Date	Description
PROJECT NBR.	---		
DISCIPLINE	CIVIL ENGINEERING		
SECTOR			
BUILDING			
DESIGNED	ENG.NADA ELHELLOU		
DRAWN	---		
CHECKED	---		
APPROVED	---		
DATE	---		
SCALE	1/100		
SHEET SIZE	A1		
Title			

KOBBEH
TRIPOLI

Sheet 1 OF 1

S1601KR-PH1-SW-01-REV.0

Project Number Phase Type Drawing Number Revision

PICTOGRAMS , CAMERA & EMERGENCY LIGHTS PLAN