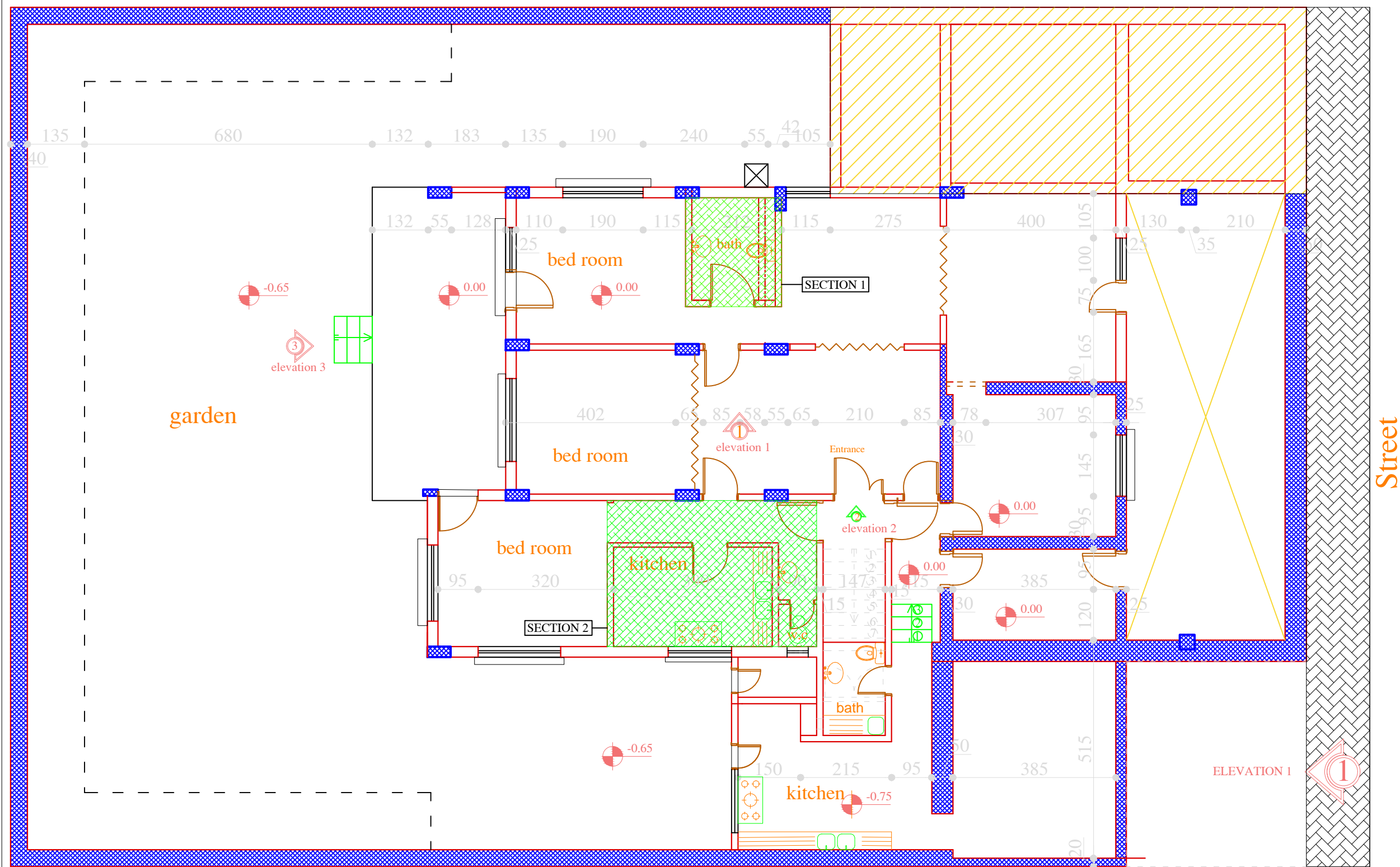


1- CIVIL & ARCHITECTURAL DRAWINGS



GENERAL NOTES :

NEGLECTED AREA
REINFORCEMENT SEC
PAVMENT
SECTION 1,2

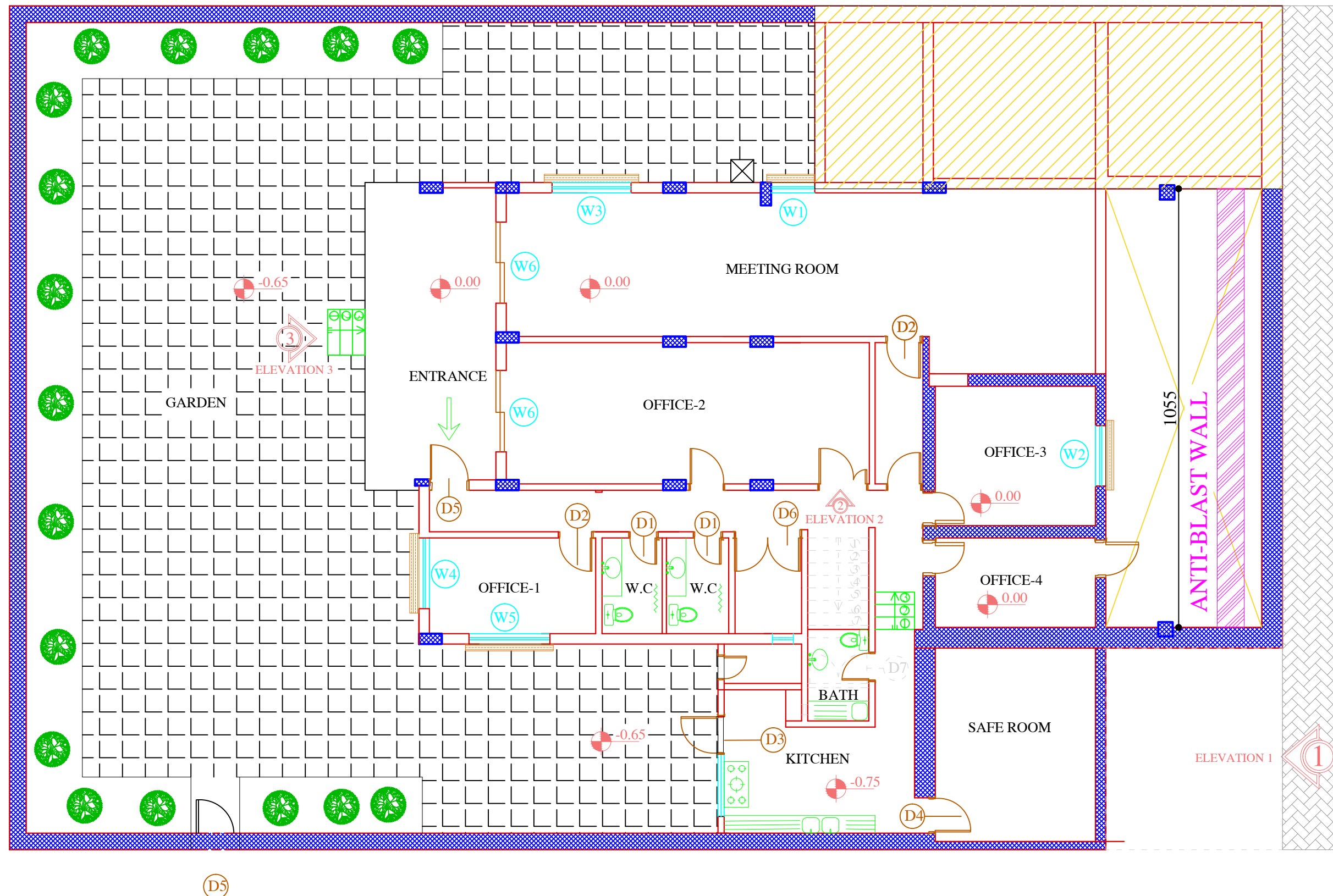


PROJECT NAME :
REHABILITATION OF OCHA BUILDING
IN AL MAZEH

DRAWING TITLE :
AS BUILT BUILDING LAYOUT

DESIGNED BY:	DRAWING NO. : A-01
APPROVED BY:	SCALE : 1:100
DATE: 03/12/2016	REV NO. :

1. ALL DIMENSIONS ARE IN CM.
2. DO NOT SCALE THE DWG. REFER TO THE DIMENSIONS MARKED IN THE DWG ONLY
3. ALL MATERIAL SAMPLES TO BE APPROVED BY ARCHITECT BEFORE USE.
4. COLUMNS DIMENSION ARE APPROXIMATE AND BE TAKEN AS THEY SEEN WITH NAKED EYES WITH NO STRUCTURAL TESTS.



NEGLECTED AREA

REINFORCEMENT SEC

PAVEMENT

SECTION 1,2



OFFICE FOR THE COORDINATION OF HUMANITARIAN AFFAIRS

PROJECT NAME :

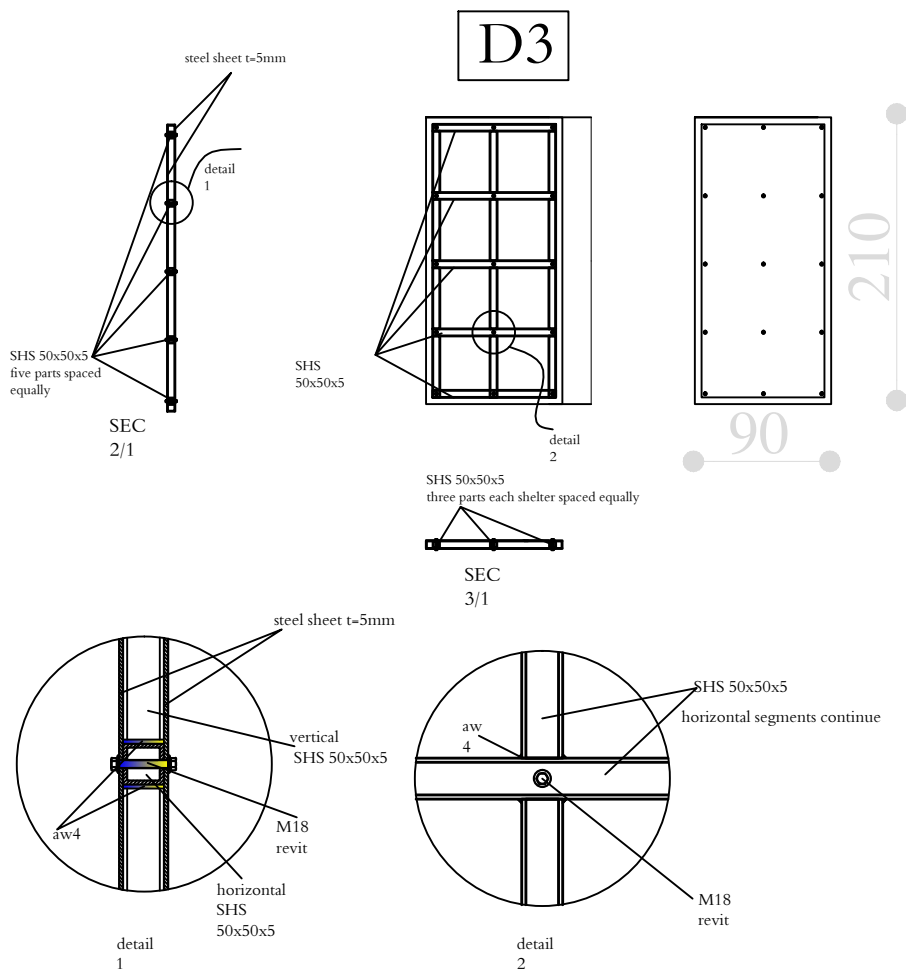
REHABILITATION OF OCHA BUILDING IN AL MAZEH

DRAWING TITLE :

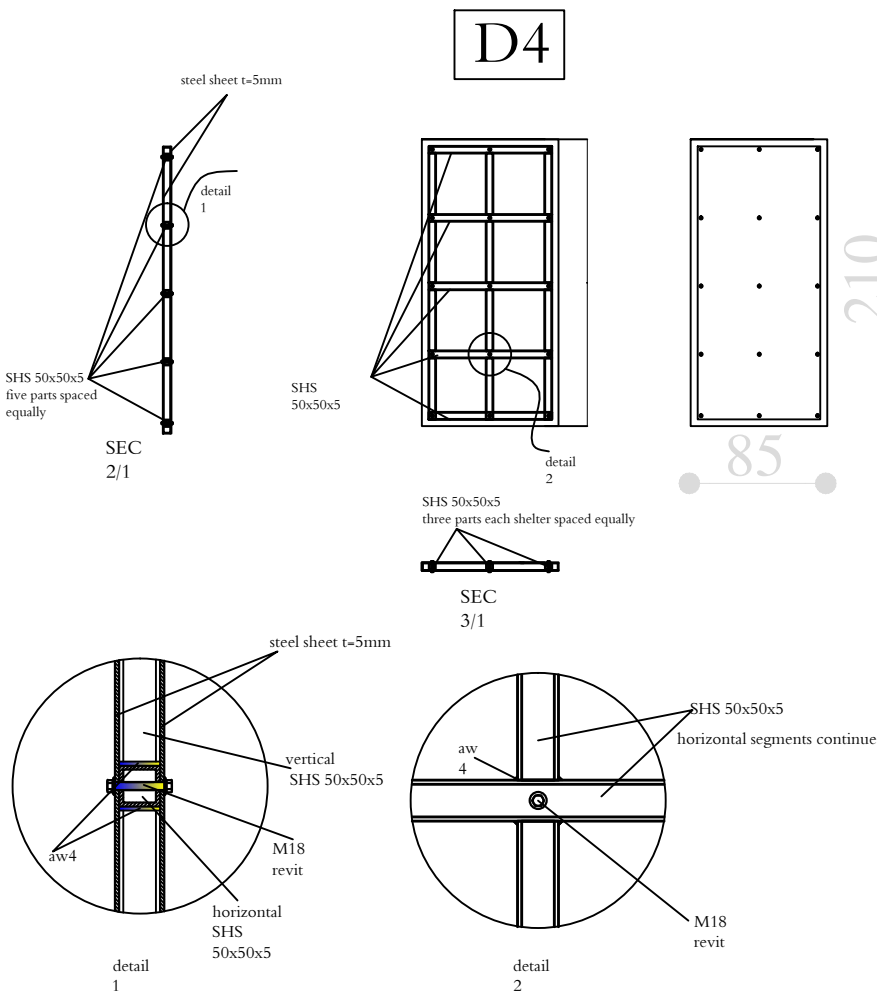
NEW BUILDING OFFICES LAYOUT

DESIGNED BY:	DRAWING NO. : A-02
APPROVED BY:	SCALE : 1:100
DATE: 03/12/2016	REV NO. :

STEEL DOOR



STEEL DOOR



GENERAL NOTES :

1. ALL DIMENSIONS ARE IN CM.
2. DO NOT SCALE THE DWG. REFER TO THE DIMENSIONS MARKED IN THE DWG ONLY
3. ALL MATERIAL SAMPLES TO BE APPROVED BY ARCHITECT BEFORE USE.
4. COLUMNS DIMENSION ARE APPROXIMATE AND BE TOKEN AS THEY SEEN WITH NAKED EYES WITH NO STRUCTURAL TESTS.

NEGLECTED AREA



REINFORCEMENT SEC



PAVMENT



SECTION 1,2



OFFICE FOR THE COORDINATION OF HUMANITARIAN AFFAIRS

PROJECT NAME :

REHABILITATION OF OCHA BUILDING
IN AL MAZEH

DRAWING TITLE :

STEEL DOORS DETAILS

DESIGNED BY:

DRAWING NO. : A-03

APPROVED BY:

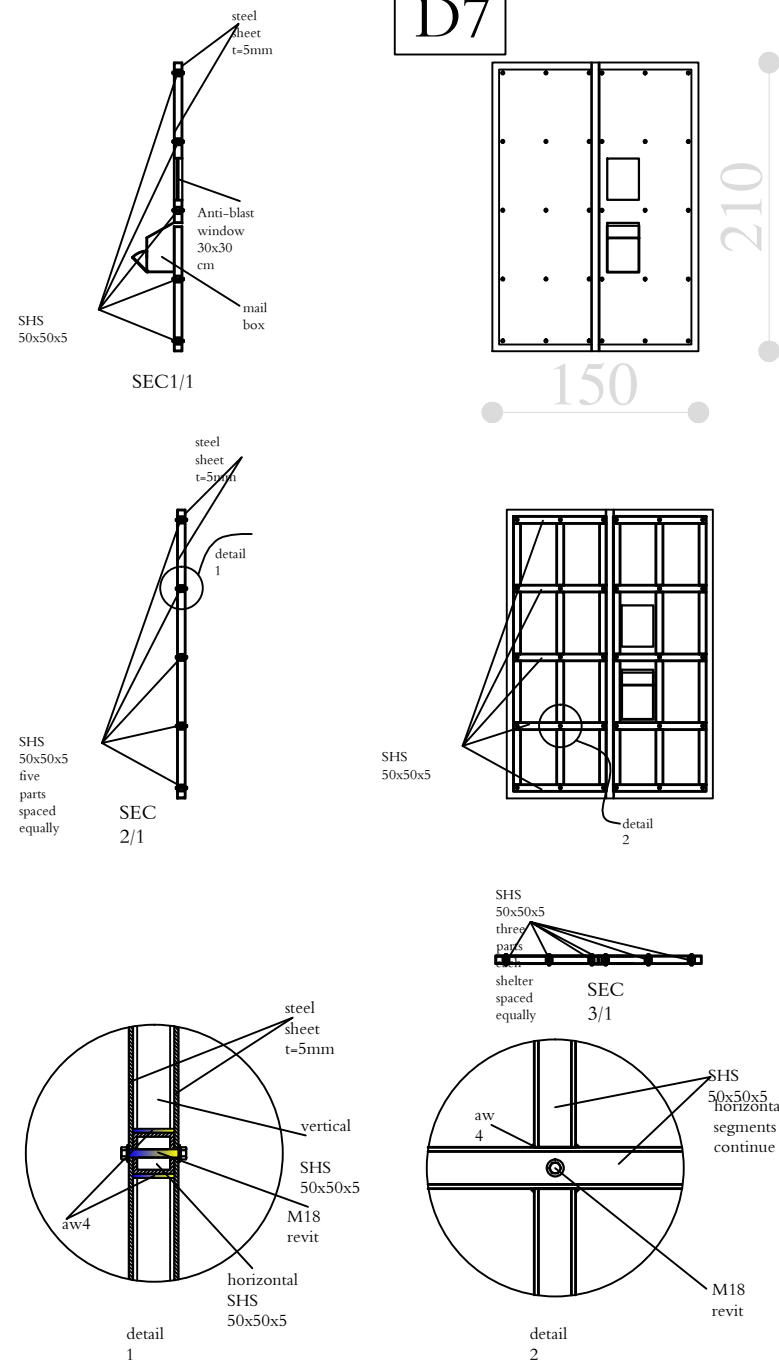
SCALE : NTS

DATE: 03/12/2016

REV NO. :

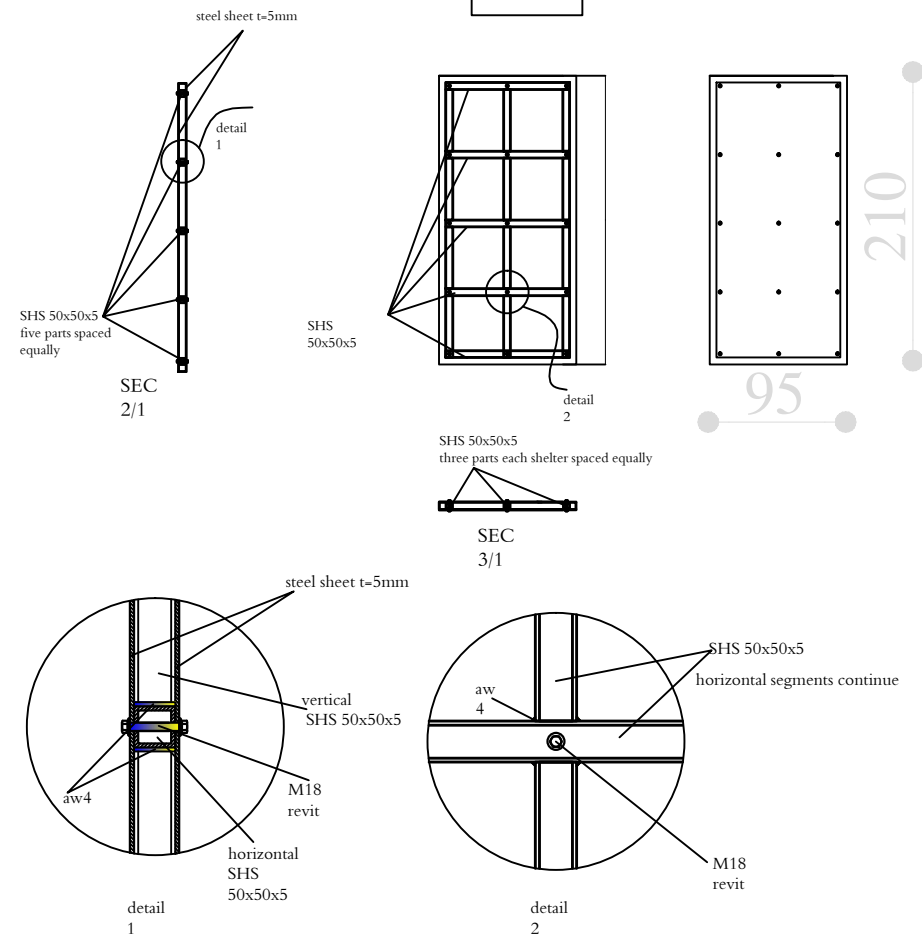
STEEL MAIN DOOR

D7



STEEL DOOR

D5



GENERAL NOTES :

1. ALL DIMENSIONS ARE IN CM.
2. DO NOT SCALE THE DWG. REFER TO THE DIMENSIONS MARKED IN THE DWG ONLY
3. ALL MATERIAL SAMPLES TO BE APPROVED BY ARCHITECT BEFORE USE.
4. COLUMNS DIMENSION ARE APPROXIMATE AND BE TOKEN AS THEY SEEN WITH NAKED EYES WITH NO STRUCTURAL TESTS.

NEGLECTED AREA
REINFORCEMENT SEC
PAVMENT
SECTION 1,2



OFFICE FOR THE COORDINATION OF HUMANITARIAN AFFAIRS

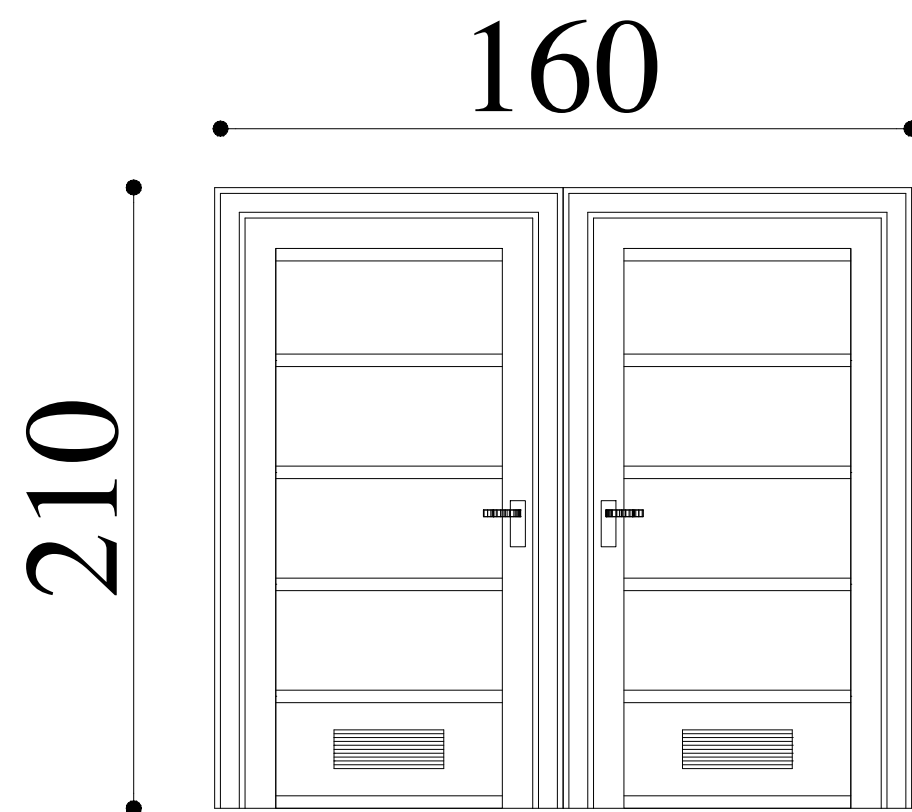
PROJECT NAME :

REHABILITATION OF OCHA BUILDING
IN AL MAZEH

DRAWING TITLE :

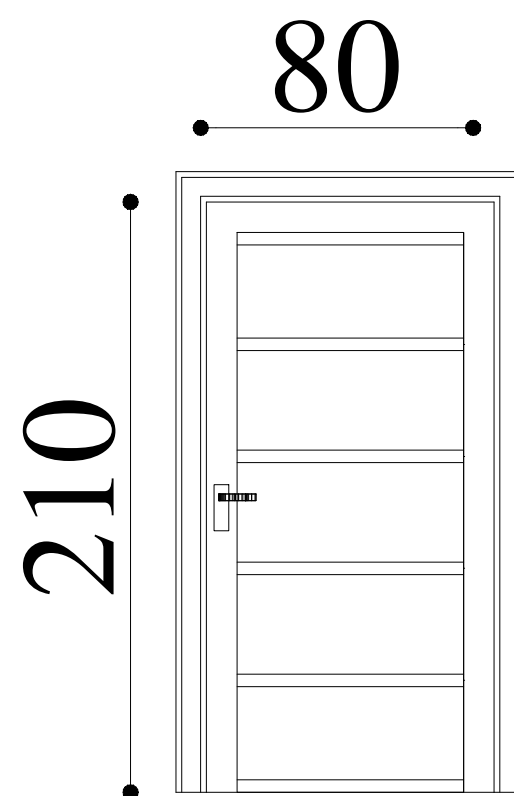
STEEL DOORS DETAILS

DESIGNED BY:	DRAWING NO. : A-04
APPROVED BY:	SCALE : NTS
DATE: 03/12/2016	REV NO. :



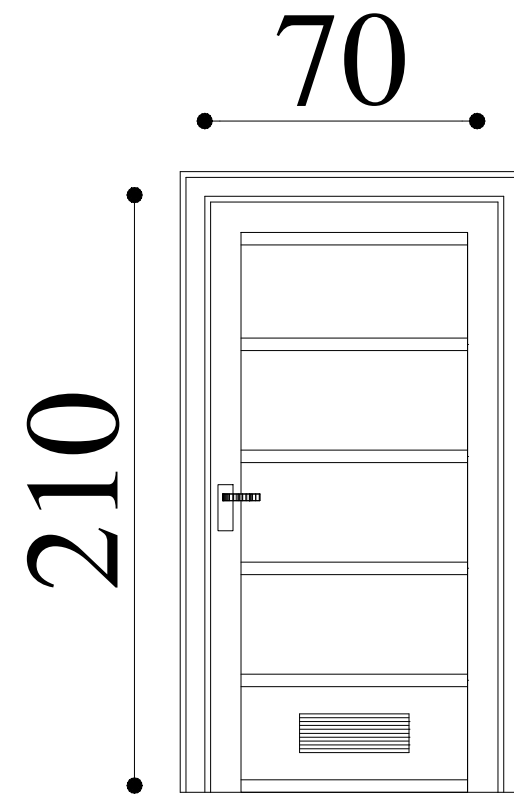
Wood Door

D6



Wood Door

D2



Wood Door

D1

GENERAL NOTES :

1. ALL DIMENSIONS ARE IN CM.
2. DO NOT SCALE THE DWG. REFER TO THE DIMENSIONS MARKED IN THE DWG ONLY
3. ALL MATERIAL SAMPLES TO BE APPROVED BY ARCHITECT BEFORE USE.
4. COLUMNS DIMENSION ARE APPROXIMATE AND BE TOKEN AS THEY SEEN WITH NAKED EYES WITH NO STRUCTURAL TESTS.

NEGLECTED AREA
REINFORCEMENT SEC
PAVMENT
SECTION 1,2



OFFICE FOR THE COORDINATION OF HUMANITARIAN AFFAIRS

PROJECT NAME :

REHABILITATION OF OCHA BUILDING
IN AL MAZEH

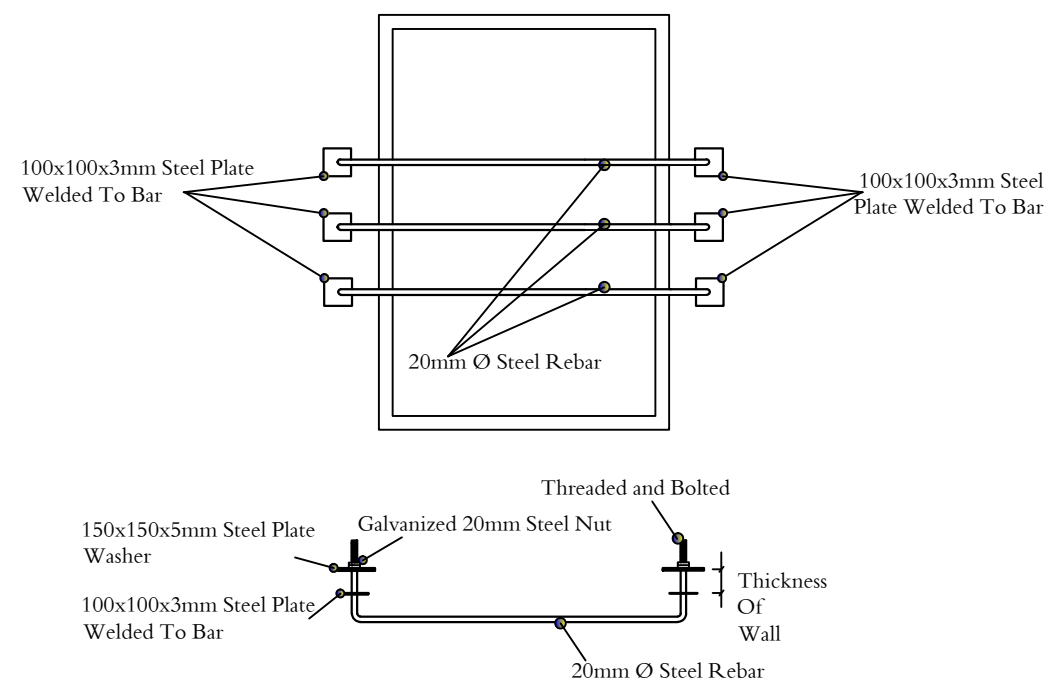
DRAWING TITLE :

WOODEN DOOR DETAILS

DESIGNED BY:	DRAWING NO. : A-05
APPROVED BY:	SCALE : NTS
DATE: 03/12/2016	REV NO. :

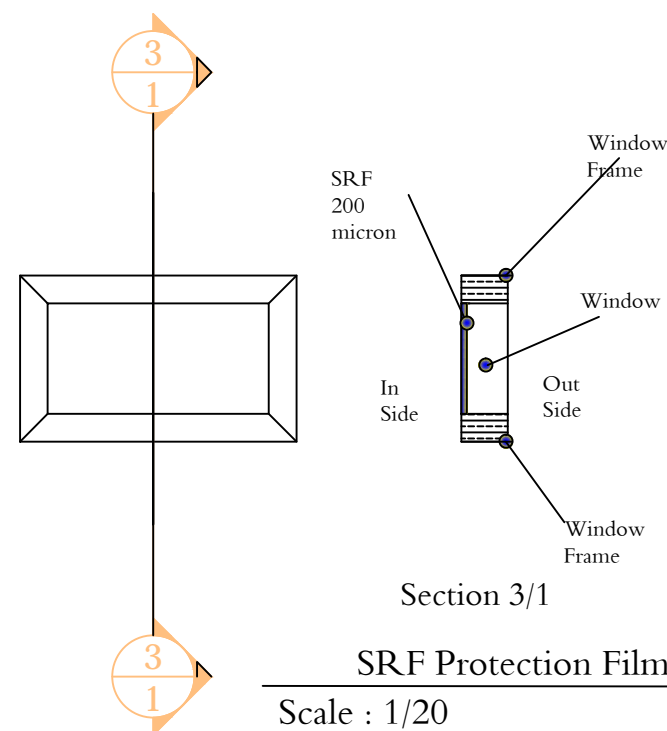


Windows	The Type	Dimensional	The total number
W 1	sliding double glazed window	105*150	1
W 2	sliding double glazed window	145*150	1
W 3	sliding double glazed window	190*150	1
W 4	sliding double glazed window	170*160	1
W 5	sliding double glazed window	195*145	1
W 6	sliding double glazed window	200*210	2



Window Frame Capture

Scale : 1/20



SRF Protection Film

Scale : 1/20

1. ALL DIMENSIONS ARE IN CM.
2. DO NOT SCALE THE DWG. REFER TO THE DIMENSIONS MARKED IN THE DWG ONLY
3. ALL MATERIAL SAMPLES TO BE APPROVED BY ARCHITECT BEFORE USE.
4. COLUMNS DIMENSION ARE APPROXIMATE AND BE TAKEN AS THEY SEEN WITH NAKED EYES WITH NO STRUCTURAL TESTS.

NEGLECTED AREA

REINFORCEMENT SEC

PAVEMENT

SECTION 1,2



REHABILITATION OF OCHA BUILDING IN AL MAZEH

WINDOWS DETAILS

DESIGNED BY:	DRAWING NO. : A-06
APPROVED BY:	SCALE : NTS
DATE: 03/12/2016	REV NO. :

1055

SHS 5X5X0.5
@50 cm

310

50

SHS 10X10X0.8

SHS 50x50x5
@100 cm

SHS 5X5X0.5
@50 cm

SHS 10X10X0.8
@100 cm

SHS 10X10X0.8
@50 cm

Sand

Retaining Wall

ANTI-BLAST WALL

GENERAL NOTES :

1. ALL DIMENSIONS ARE IN CM.
2. DO NOT SCALE THE DWG. REFER TO THE DIMENSIONS MARKED IN THE DWG ONLY
3. ALL MATERIAL SAMPLES TO BE APPROVED BY ARCHITECT BEFORE USE.
4. COLUMNS DIMENSION ARE APPROXIMATE AND BE TOKEN AS THEY SEEN WITH NAKED EYES WITH NO STRUCTURAL TESTS.

NEGLECTED AREA



REINFORCEMENT SEC



PAYMENT



SECTION 1,2



OCHA

OFFICE FOR THE COORDINATION OF HUMANITARIAN AFFAIRS

PROJECT NAME :

REHABILITATION OF OCHA BUILDING
IN AL MAZEH

DRAWING TITLE :

ANTI-BLAST WALL DETAILS

DESIGNED BY:

DRAWING NO. : A-07

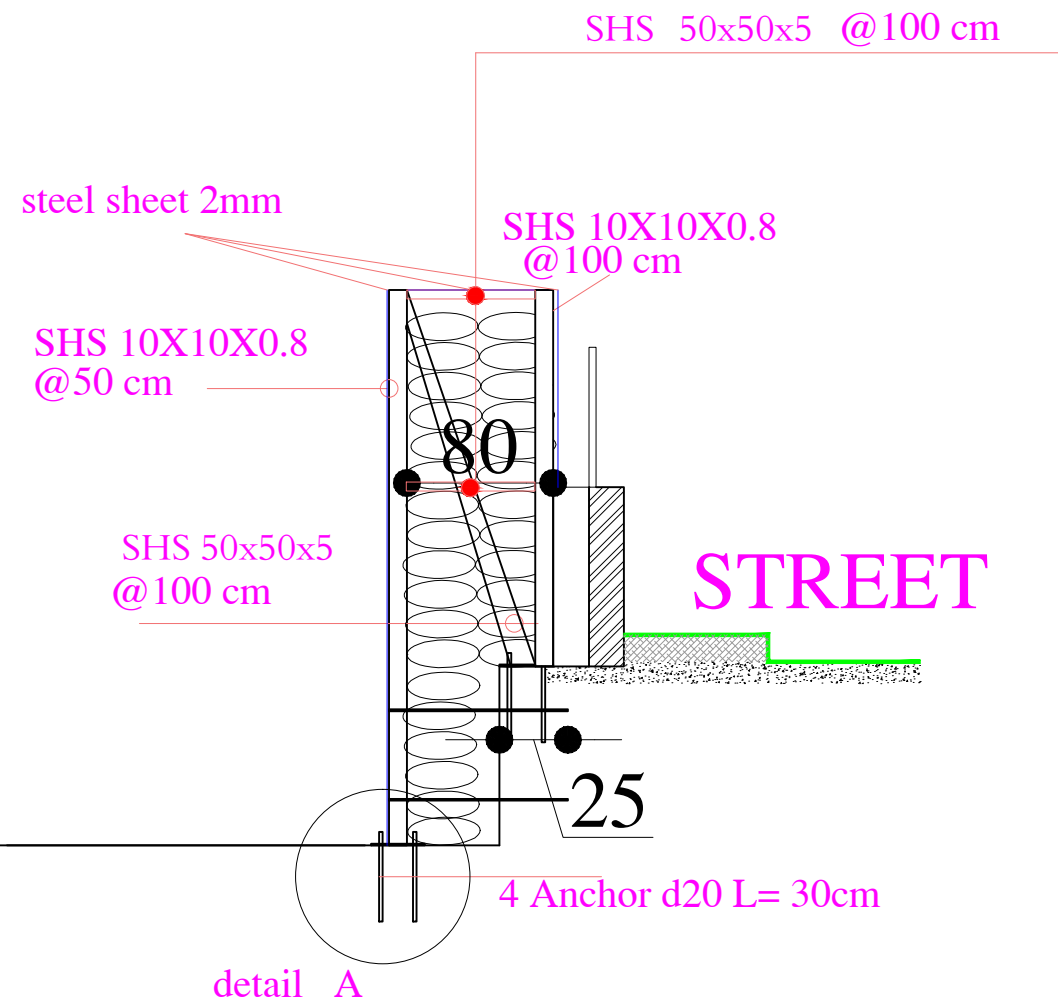
APPROVED BY:

SCALE : NTS

DATE: 03/12/2016

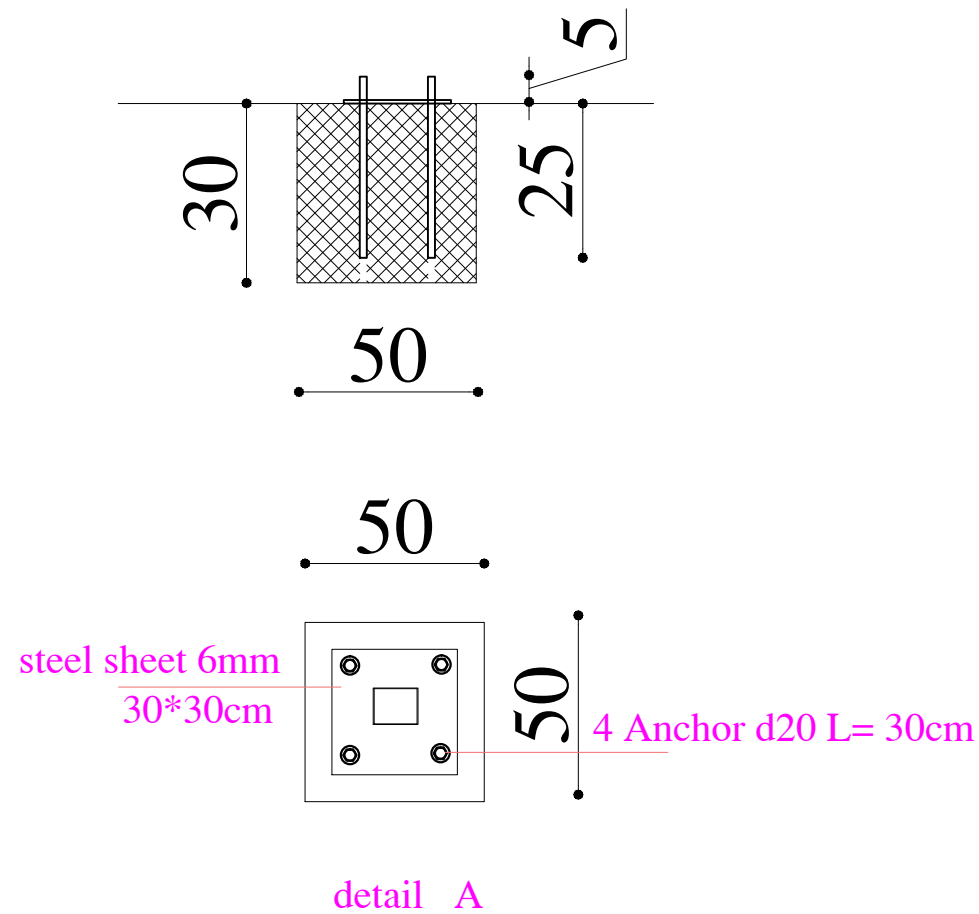
REV NO. :

BUILDING



STREET

ANTI-BLAST WALL



GENERAL NOTES :

1. ALL DIMENSIONS ARE IN CM.
2. DO NOT SCALE THE DWG. REFER TO THE DIMENSIONS MARKED IN THE DWG ONLY
3. ALL MATERIAL SAMPLES TO BE APPROVED BY ARCHITECT BEFORE USE.
4. COLUMNS DIMENSION ARE APPROXIMATE AND BE TOKEN AS THEY SEEN WITH NAKED EYES WITH NO STRUCTURAL TESTS.

- NEGLECTED AREA
- REINFORCEMENT SEC
- PAYMENT
- SECTION 1,2



OFFICE FOR THE COORDINATION OF HUMANITARIAN AFFAIRS

PROJECT NAME :

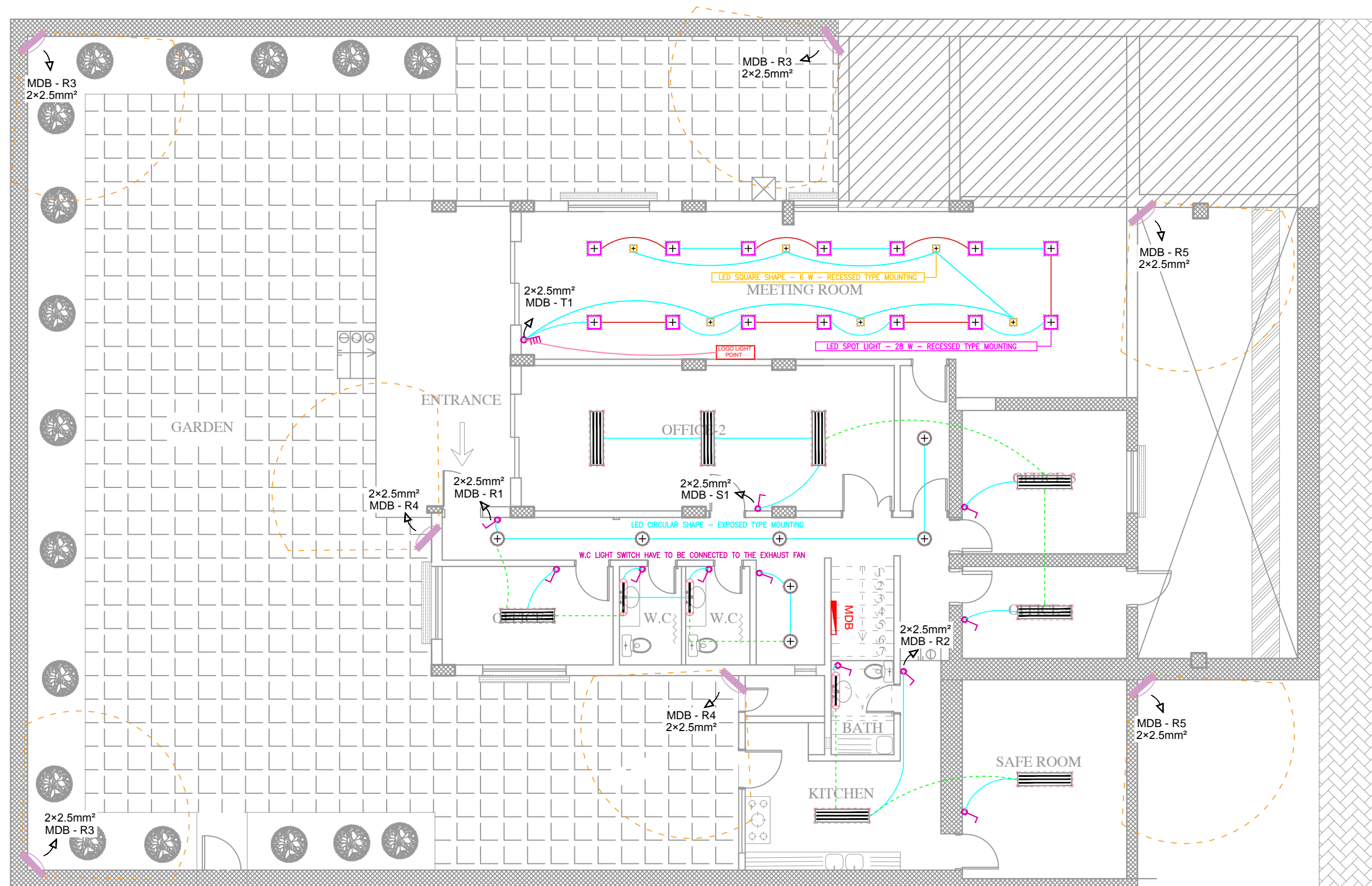
REHABILITATION OF OCHA BUILDING
IN AL MAZEH

DRAWING TITLE :

ANTI-BLAST WALL DETAILS

DESIGNED BY:	DRAWING NO. : A-07
APPROVED BY:	SCALE : NTS
DATE: 03/12/2016	REV NO. :

2- ELECTRICAL DRAWINGS



OFFICE FOR THE COORDINATION OF HUMANITARIAN AFFAIRS

PROJECT NAME :

REHABILITATION OF OCHA BUILDING
IN AL MAZEH

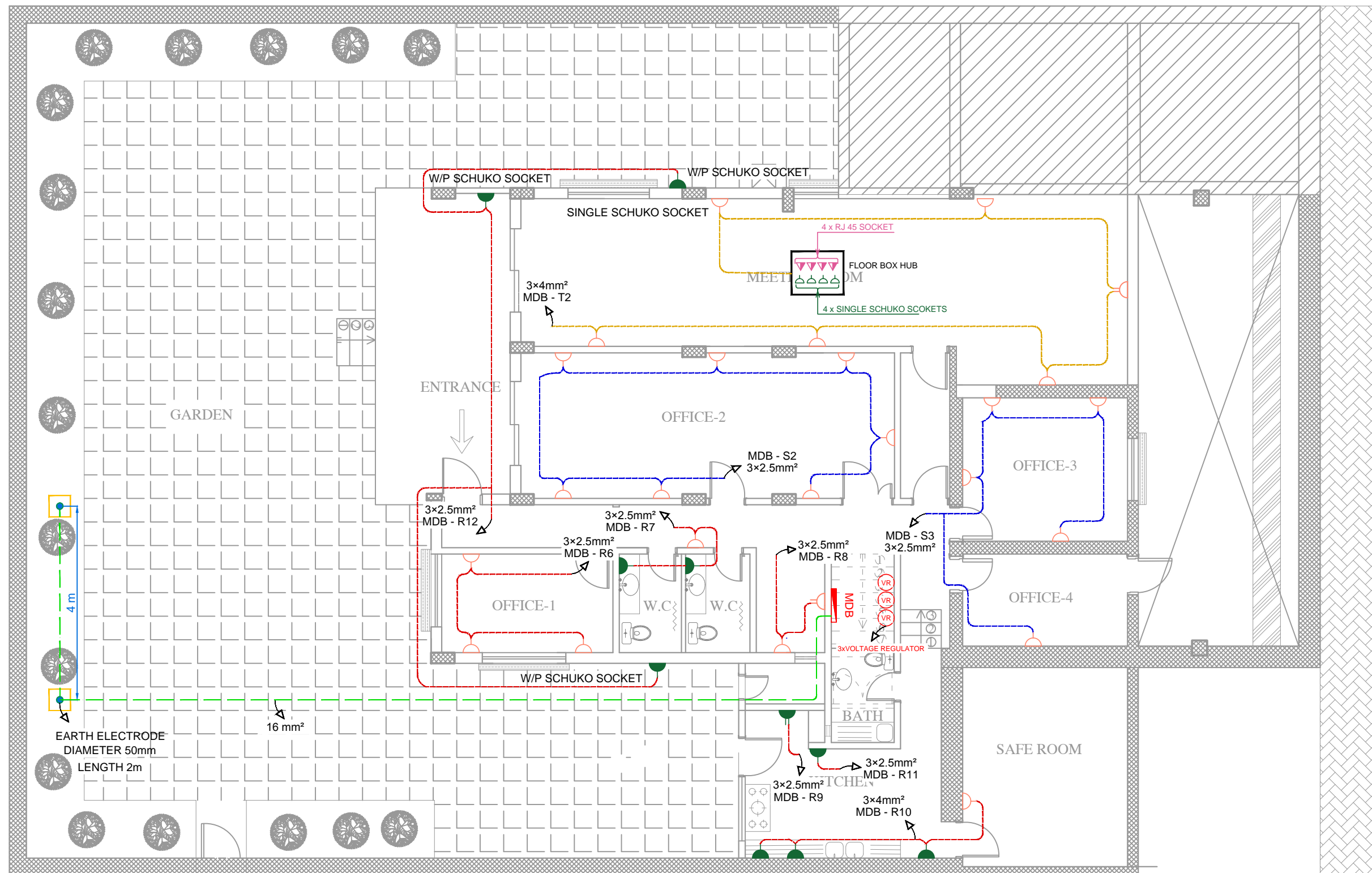
DRAWING TITLE :

LIGHTING LAYOUT

DESIGNED BY: DEEMA ALHOSAINY DRAWING NO. : E-HC-01

APPROVED BY: SCALE : 1:100

DATE: 03/12/2016 REV NO. :



NOTES:

- FLOOR BOX HAS 4 DATA SOCKETS AND 4 SCHUKO SOCKETS.
- ALL CABLES ARE WIRED IN TRUNKING, EXCEPT IN THE MEETING ROOM, ALL CABLES ARE HIDDEN IN THE WALLS AND FALSE CEILING.
- ALL SOCKETS ARE EXPOSED, EXCEPT IN THE MEETING ROOM, ALL CABLES ARE HIDDEN IN THE WALLS.
- DISTANCE BETWEEN ANY SOCKET OFF THE DOORS AND WALLS MUST BE 50 Cm.
- ALL POWER SOCKETS ARE SCHUKO TYPE .
- WHEN WIRING SOCKETS ON TWO SIDES OF ONE WALL, THERE MUST BE A HORIZONTAL DISTANCE BETWEEN THE SOCKETS BETWEEN TWO SIDES MINIMUM ABOUT 15 Cm.



OFFICE FOR THE COORDINATION OF HUMANITARIAN AFFAIRS

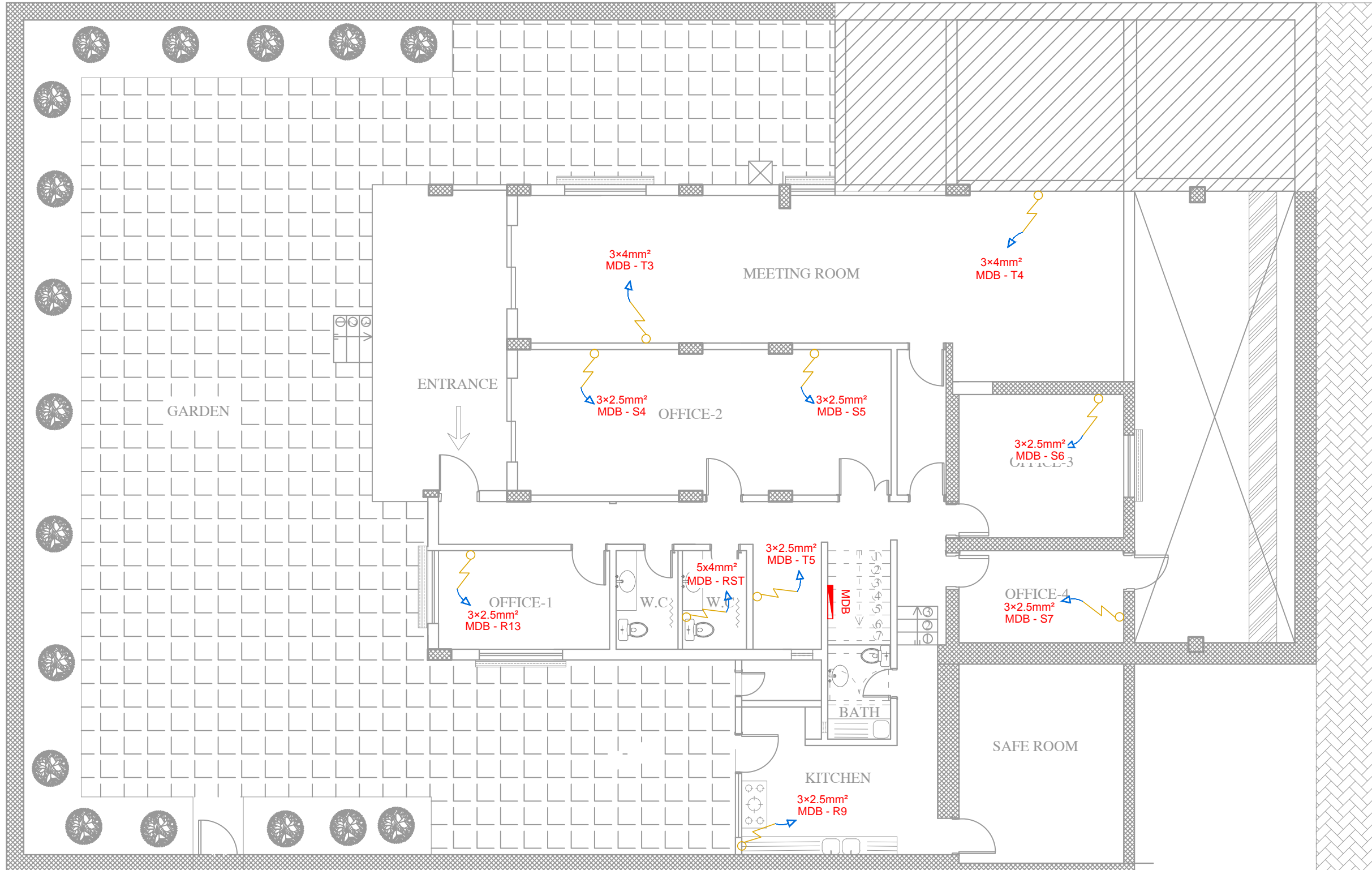
PROJECT NAME :

REHABILITATION OF OCHA BUILDING
IN AL MAZEH

DRAWING TITLE :

POWER LAYOUT

DESIGNED BY: DEEMA ALHOSAINY	DRAWING NO. : E-HC-02
APPROVED BY:	SCALE : 1:100
DATE: 03/12/2016	REV NO. :



OFFICE FOR THE COORDINATION OF HUMANITARIAN AFFAIRS

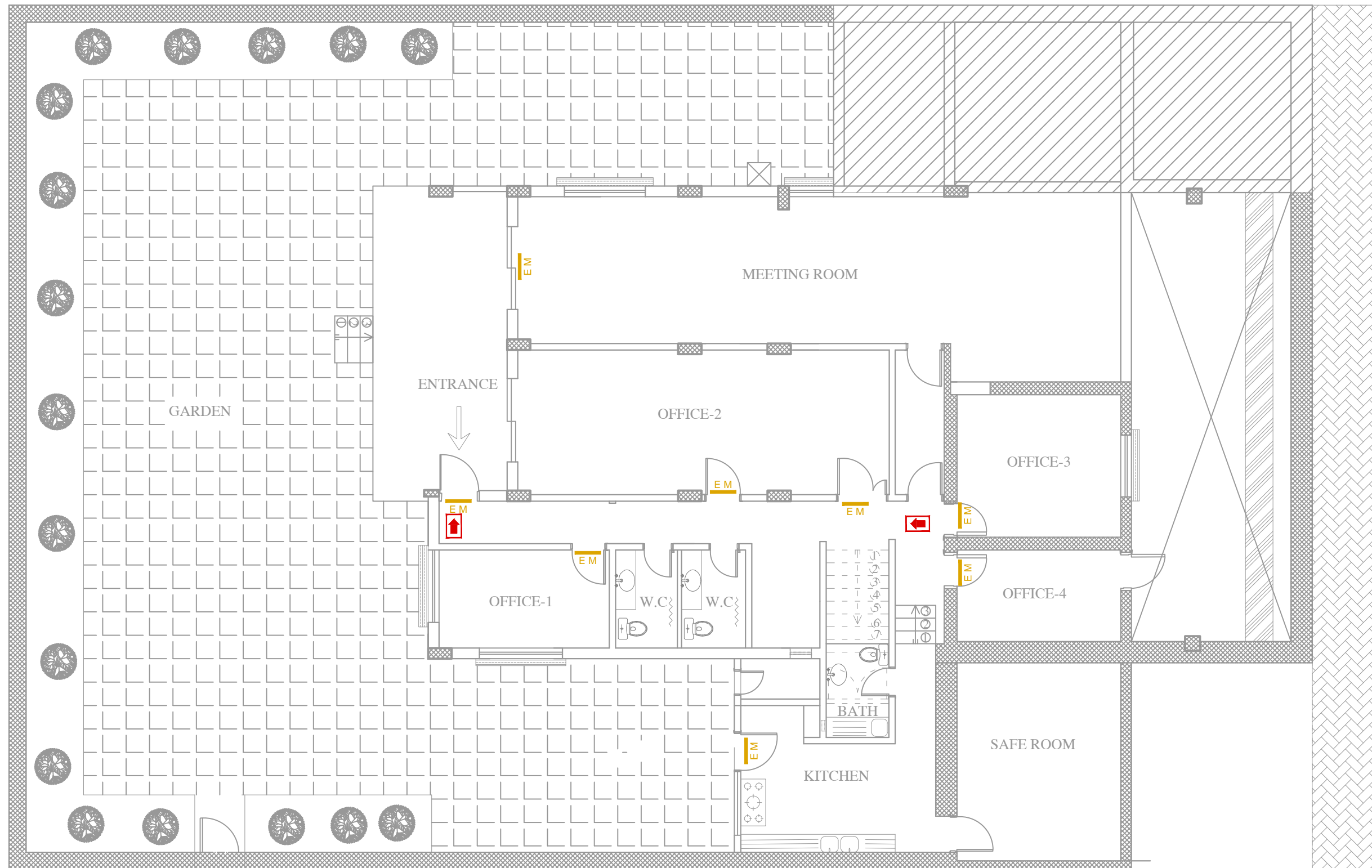
PROJECT NAME :

REHABILITATION OF OCHA BUILDING
IN AL MAZEH

DRAWING TITLE :

MECHANICAL EQUIPMENTS LAYOUT

DESIGNED BY: DEEMA ALHOSAINY	DRAWING NO. : E-HC-03
APPROVED BY:	SCALE : 1:100
DATE: 03/12/2016	REV NO. :



OFFICE FOR THE COORDINATION OF HUMANITARIAN AFFAIRS

PROJECT NAME :
REHABILITATION OF OCHA BUILDING
IN AL MAZEH

DRAWING TITLE :
EMERGENCY LIGHT LAYOUT

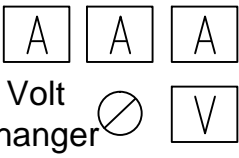
DESIGNED BY: DEEMA ALHOSAINY	DRAWING NO. : E-HC-04
APPROVED BY:	SCALE : 1:100
DATE: 03/12/2016	REV NO. :

FROM CHANGE OVER

IP:42
Ptot = 57.2 kW
Itot = 109 A
Peff = 36.6 kW
Ieff = 70 × 1.25 = 87.5 A
3Ph+N+E,380 V,50 HZ

(4 x 16)+16 mm2
NYY

MCB
100 A
10 kA



10 kA



Volt
Changer

LOAD	KIND OF WIRE & CROSS SECTION mm2	CURRENT (A)			POWER (W)	LINE NO.																														
		R	S	T			R1	S1	R2	T1	R3	R4	R5	R6	R7	R8	S2	S3	R9	R10	R11	R12	T2	R13	S4	S5	S6	S7	T3	T4	T5	RST	SP1	SP2	SP3	
							2.2		1.6		2.1	0.7	0.7	8.5	5.1	8.5			8.5	23.2	5.6	5.1		8.5									37.6			
								3.4								20	14									8.5	8.5	8.5	8.5				37.6			

NOTES:

- THIS MDB IS CONNECTED TO A 30 mA RCD.

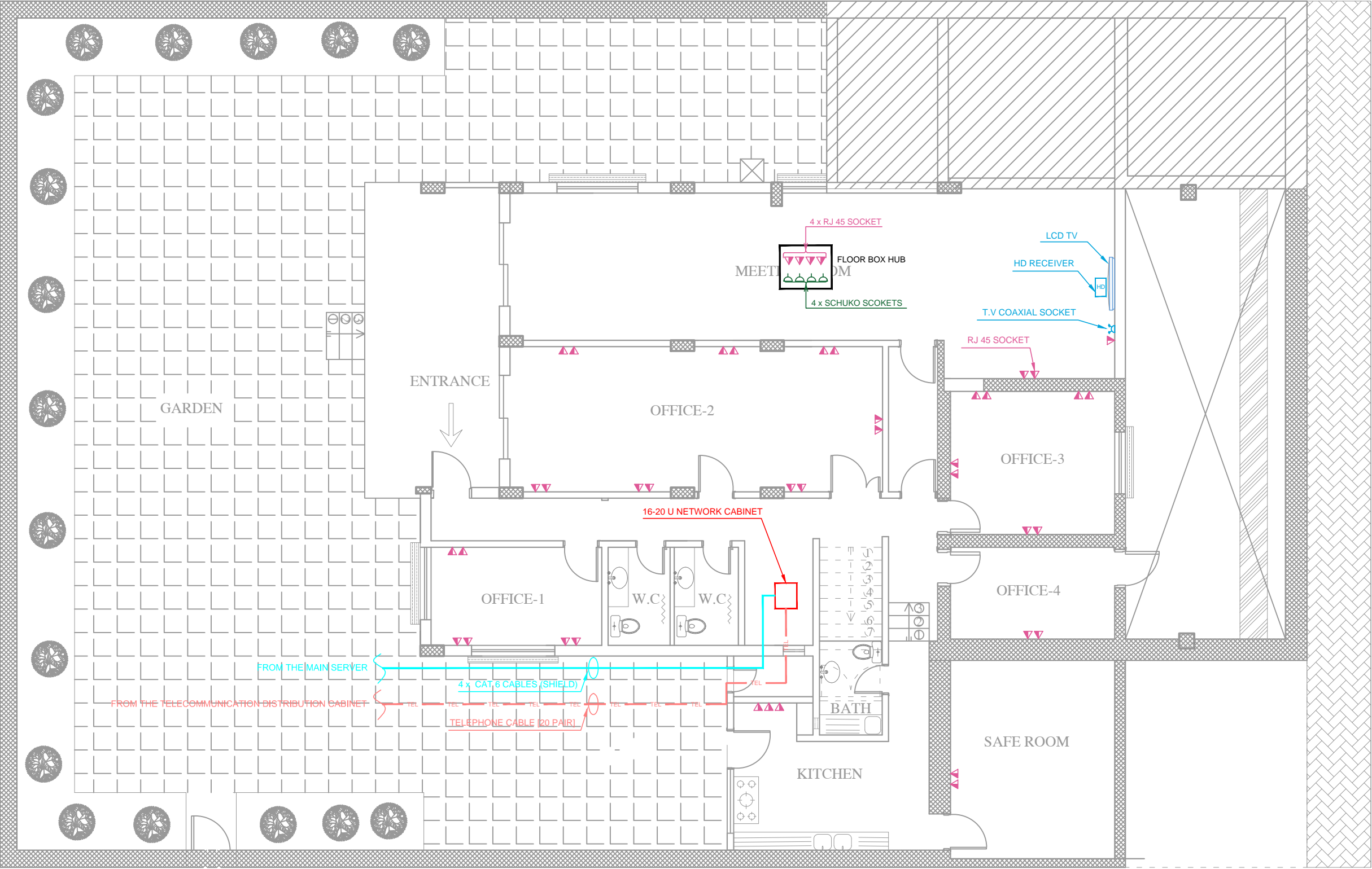


OFFICE FOR THE COORDINATION OF HUMANITARIAN AFFAIRS

PROJECT NAME :
REHABILITATION OF OCHA BUILDING
IN AL MAZEH

DRAWING TITLE :
MAIN DISTRIBUTION BOARD SCHEMATIC

DESIGNED BY: DEEMA ALHOSAINY	DRAWING NO. : E-HC-05
APPROVED BY:	SCALE : N.T.S
DATE: 03/12/2016	REV NO. :



- NOTES:
- FLOOR BOX HAS 4 DATA SOCKETS AND 4 SCHUKO SOCKETS.
 - ALL CABLES ARE WIRED IN TRUNKING, EXCEPT IN THE MEETING ROOM, ALL CABLES ARE HIDDEN IN THE WALLS AND FALSE CEILING
 - ALL SOCKETS ARE EXPOSED, EXCEPT IN THE MEETING ROOM, ALL CABLES ARE HIDDEN IN THE WALLS.
 - DISTANCE BETWEEN ANY SOCKET OFF THE DOORS AND WALLS MUST BE 50 Cm.
 - ALL DATA SOCKETS ARE RJ45 TYPE.
 - WHEN WIRING SOCKETS ON TWO SIDES OF ONE WALL, THERE MUST BE A HORIZONTAL DISTANCE BETWEEN THE SOCKETS BETWEEN TWO SIDES AT LEAST ABOUT 15 Cm.
 - EACH DATA SOCKET HAVE TO BE CONNECTED TO THE NETWORK CABINET AS PER IT ENGINEER REQUIREMENTS.
 - NETWORK CABINET IS CONNECTED TO THE MAIN SERVER BY 4 x CAT 6 CORDS WITH LENGTH FOR EACH CABLE APPROXIMATELY 50 m (REAL LENGTH MUST BE DETERMINED BY THE CONTRACTOR).
 - ALL DATA WIRING (FROM THE NETWORK CABINET TO THE RJ45 SOCKET) ARE BY CAT 6 CORDS (REAL LENGTH OF ALL CABLES MUST BE DETERMINED BY THE CONTRACTOR).
 - THE BUILDING IS CONNECTED TO THE TELECOMMUNICATION DISTRIBUTION CABINET BY 20 PAIR TELEPHONE CABLE WITH LENGTH APPROXIMATELY 150 m (REAL LENGTH MUST BE DETERMINED BY THE CONTRACTOR).
 - ALL DATA CABLES WHICH ARE COMING FROM THE MAIN SERVER ARE SHIELD CABLES, AND ALL THE CABLES FROM THE NETWORK CABINET TO THE DATA SOCKETS ARE UTP CABLES.
 - ALL DATA CABLES FOR WIRING INSIDE THE NETWORK CABINET ARE UTP CAT 6 CABLES.
 - NETWORK CABINET HAS 12 UNIT CAPACITY.
 - EACH SWITCH PANEL AND PATCH PANEL HAS 24 PORT, AND EVERY PORT SUPPLY POWER PER ETHERNET ABOUT 15.4 WATT.

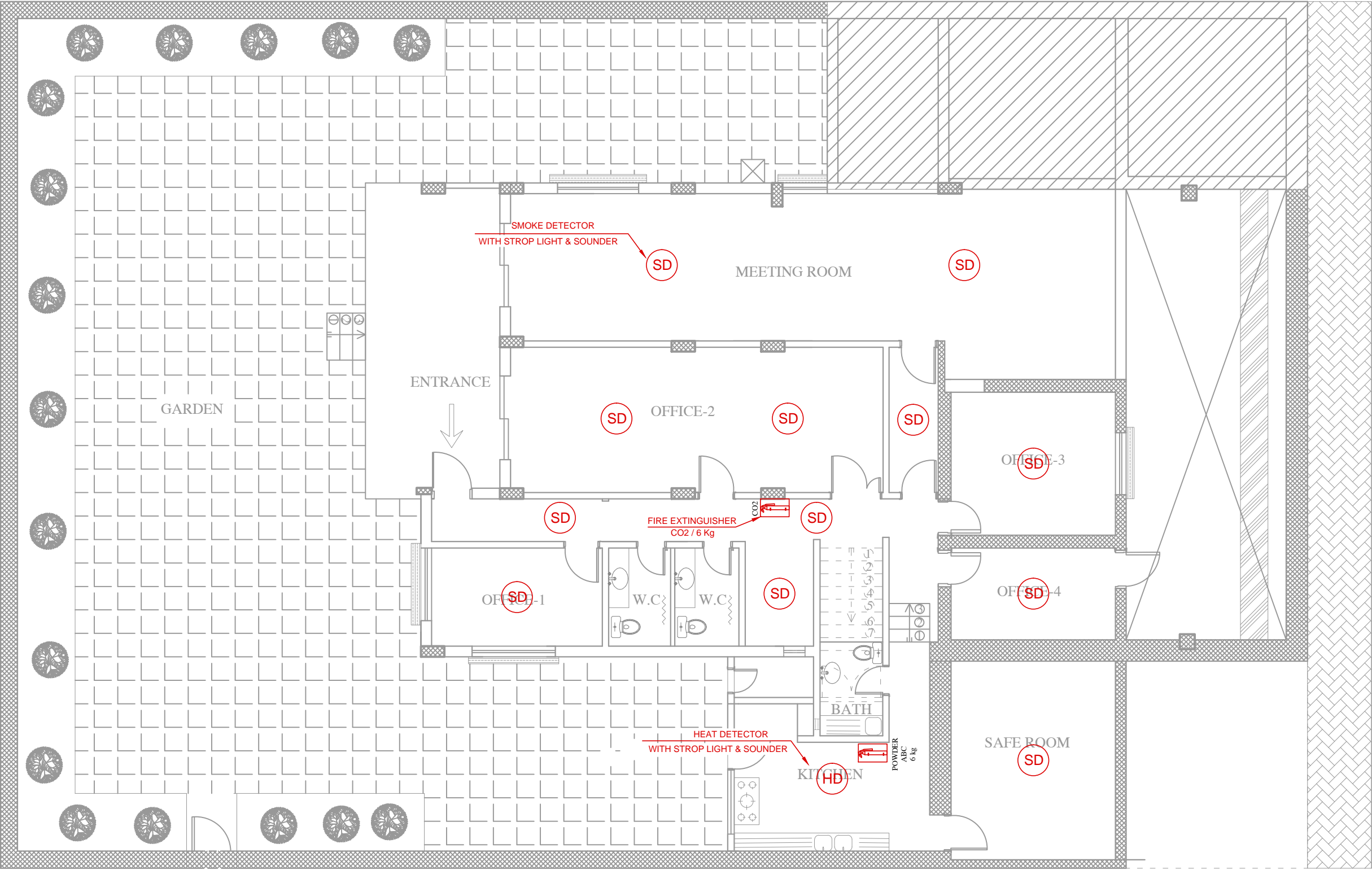


OFFICE FOR THE COORDINATION OF HUMANITARIAN AFFAIRS

PROJECT NAME :
REHABILITATION OF OCHA BUILDING
IN AL MAZEH

DRAWING TITLE :
DATA & TELEPHONE LAYOUT

DESIGNED BY: AMEER HAWARY	DRAWING NO. : E-LC-01
APPROVED BY:	SCALE : 1:100
DATE: 03/12/2016	REV NO. :



- NOTES:
- THERE IS NO FIRE FIGHTING SYSTEM CONNECTED TO THE FIRE ALARM SYSTEM.
 - ALL SMOKE DETECTORS AND HEAT DETECTORS WORK SEPARATELY.
 - ALL SMOKE DETECTORS AND HEAT DETECTORS ARE BATTERY DETECTORS.
 - EACH DETECTOR CONTAINS (SENSOR, STROP LIGHT, AND SOUNDER).
 - SENSITIVITY RANGE FOR EACH DETECTOR IS A CIRCLE WITH 4.5 m RADIUS.
 - ALL DETECTORS HAVE TO BE POSITIONED AS SHOWN ON THE DRAWING.

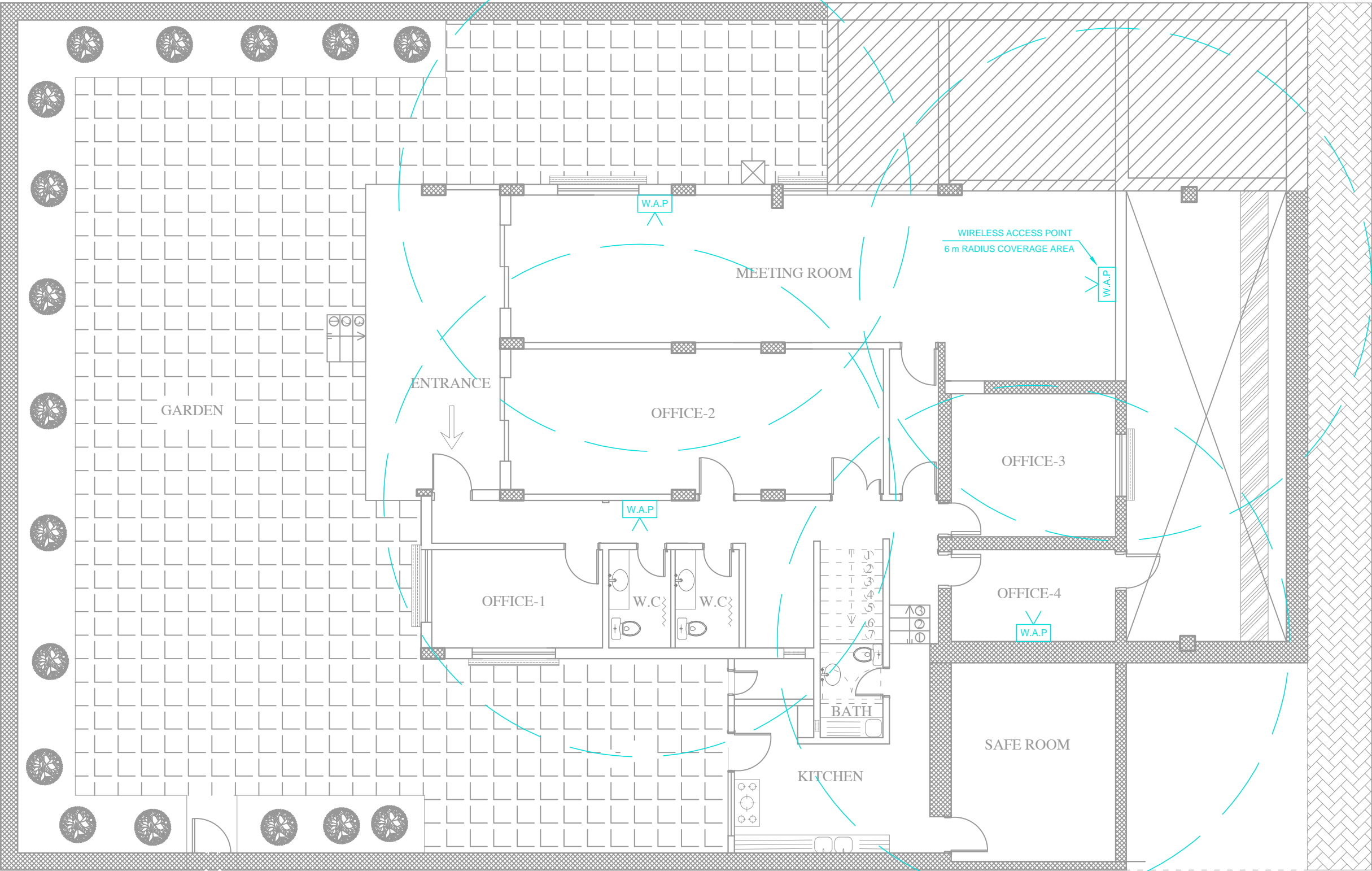


OFFICE FOR THE COORDINATION OF HUMANITARIAN AFFAIRS


PROJECT NAME :
REHABILITATION OF OCHA BUILDING
IN AL MAZEH

DRAWING TITLE :
FIRE ALARM LAYOUT

DESIGNED BY: AMEER HAWARY	DRAWING NO. : E-LC-02
APPROVED BY:	SCALE : 1:100
DATE: 03/12/2016	REV NO. :



- NOTES:
- COVERAGE AREA OF EACH WIRELESS ACCESS POINT IS A CIRCLE WITH 6 m RADIUS.
 - ALL WIRELESS ACCESS POINTS HAVE TO BE POSITIONED AS SHOWN ON THE DRAWING.
 - ALL THE W.A.P ARE CONNECTED TO A SPECIFIED PATCH PANEL IN THE NETWORK CABINET BY CAT 6 CABLES.



OCHA
OFFICE FOR THE COORDINATION OF HUMANITARIAN AFFAIRS

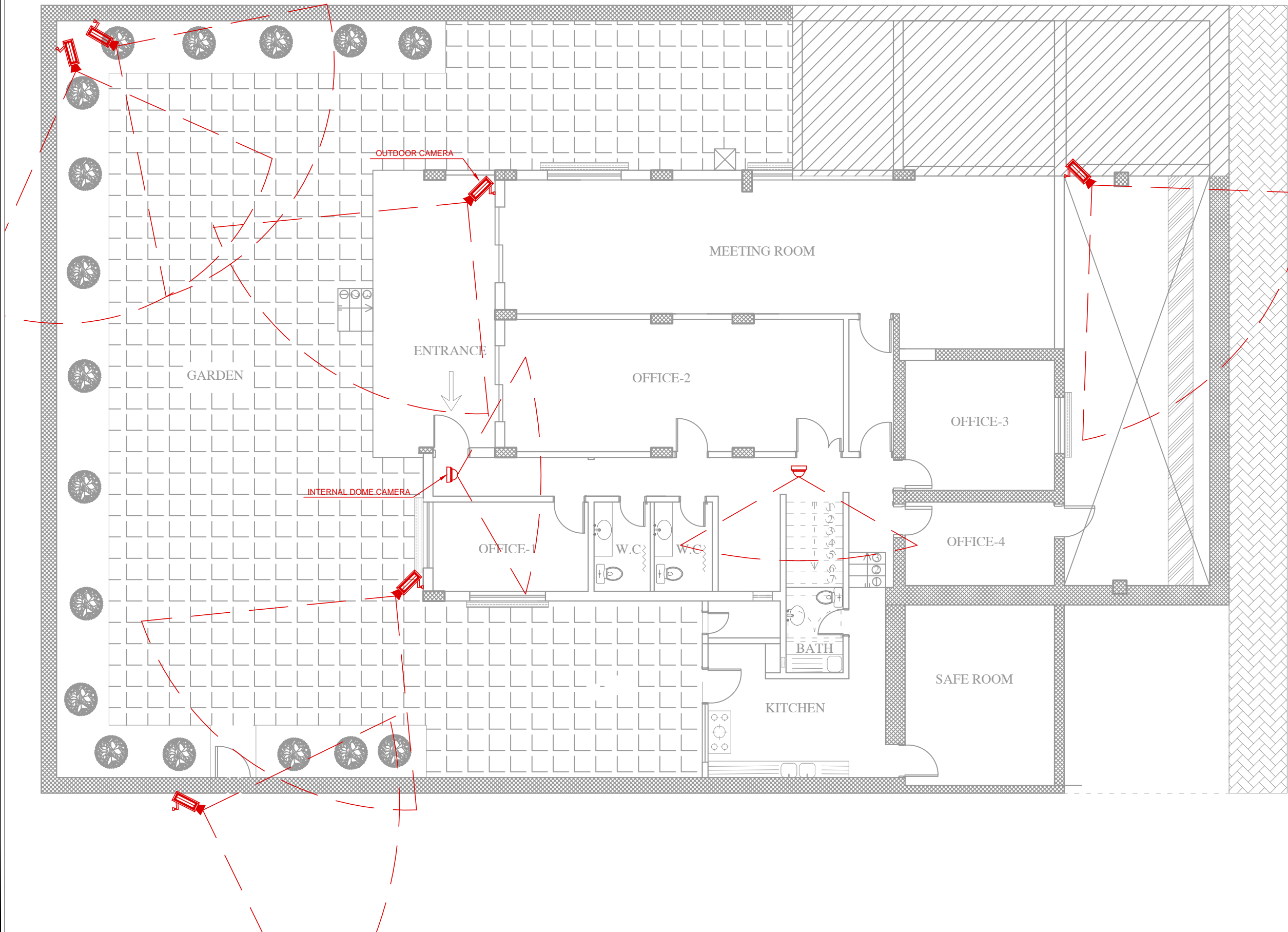
PROJECT NAME :
REHABILITATION OF OCHA BUILDING
IN AL MAZEH

DRAWING TITLE :
ACCESS POINT LAYOUT

DESIGNED BY: AMEER HAWARY	DRAWING NO. : E-LC-03
APPROVED BY:	SCALE : 1:100
DATE: 03/12/2016	REV NO. :

NOTES:

- ALL THE CAMERAS ARE CONNECTED TO THE MAIN SECURITY SYSTEM.
- ALL THE CAMERAS ARE WIRED BY CAT 6 CABLES.



OFFICE FOR THE COORDINATION OF HUMANITARIAN AFFAIRS

PROJECT NAME :

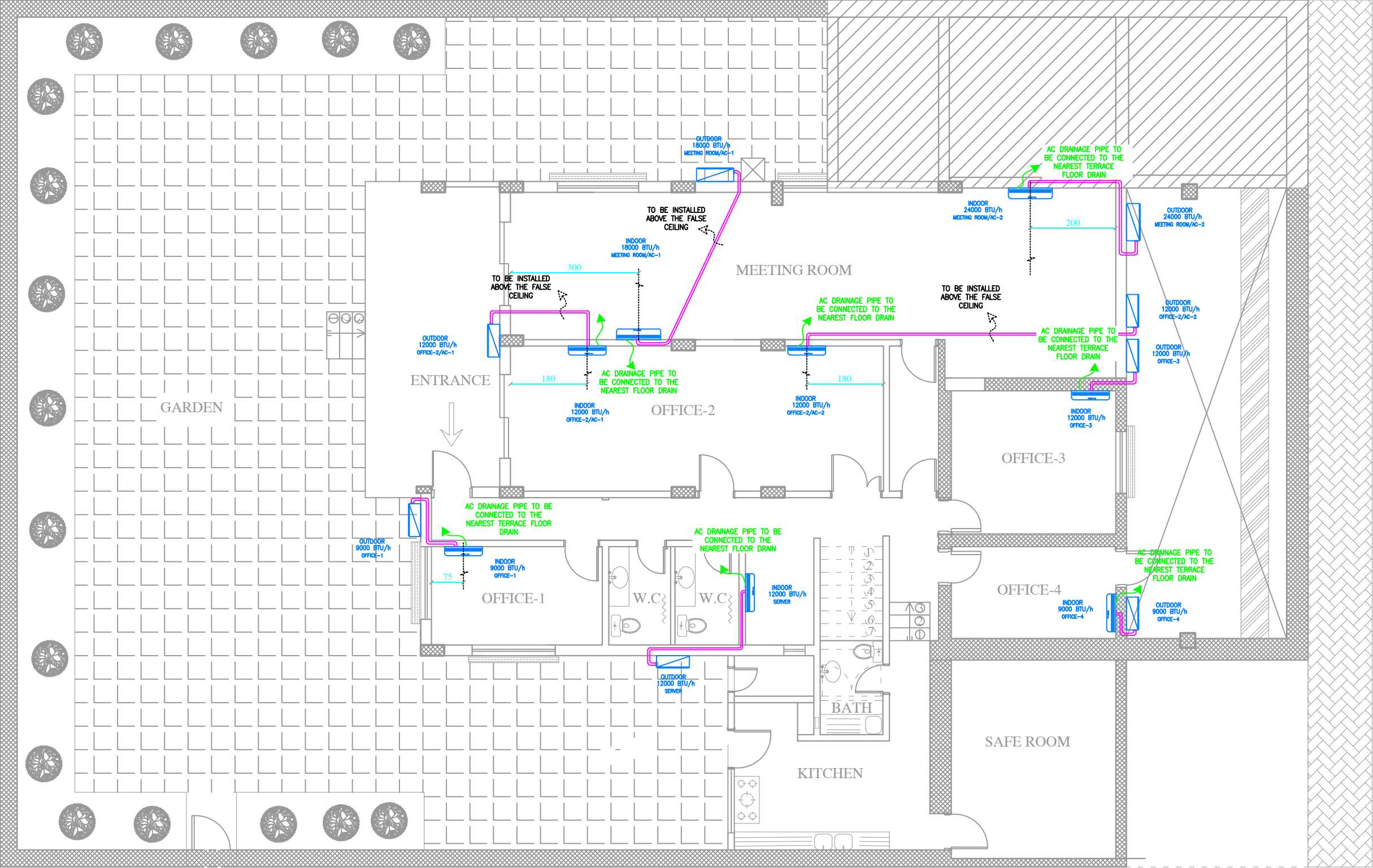
REHABILITATION OF OCHA BUILDING
IN AL MAZEH

DRAWING TITLE :










CCTV LAYOUT

DESIGNED BY: AMEER HAWARY	DRAWING NO. : E-LC-04
APPROVED BY:	SCALE : 1:100
DATE: 03/12/2016	REV NO. :

3- MECHANICAL DRAWINGS



- GENERAL NOTES :
- THE COPPER PIPES DIAMETERS USED FOR EACH A.C UNIT SHALL CONFORM TO MANUFACTURE REQUIREMENT INSULATION AND INSTRUCTIONS.
 - REFRIGERANT PIPES TO BE HIDDEN IN THE WALL AND IN THE SHORTEST ROUTE
 - BOTH SHAPES (CIRCULAR OR SQUARE) OF EXHAUST DIFFUSER ARE ACCEPTED.
 - ALL JOINTS AND CONNECTIONS SHALL BE TIGHTENED WELL.
 - ALL HOT WATER PPR PIPES SHALL BE WELL THERMAL INSULATION [MINIMUM THICKNESS = 10 MM].
 - THIS PLUMBING LAYOUT MAY BE REDRAW AFTER INSPECTION OF THE CONTRACTOR, AND FOLLOW THE SHORTEST ROUTE AND THE SAME OLD ROUTE OF MAIN SEWAGE PIPES.
 - THE CONTRACTOR SHALL HAVE THE APPROVAL FROM SUPERVISOR ENGINEER WHEN MODIFIED THE DRAWING BEFORE EXECUTION.
 - STACK VENTILATION PIPE IS REQUIRED, AND THE CONTRACTOR SHALL CHOOSE PROPER ROUTE FOR IT.

SYMBOLS	
HVAC	
	A.C – Indoor unit
	A.C – Outdoor unit
	Refrigerant Pipes
	Wall Exhaust Fan
	Wall Exhaust Grill
Plumbing	
	Hot Water Pipe [PPR]
	Cold Water Pipes [PPR]
	PVC Pipes
	Instant Water Heater

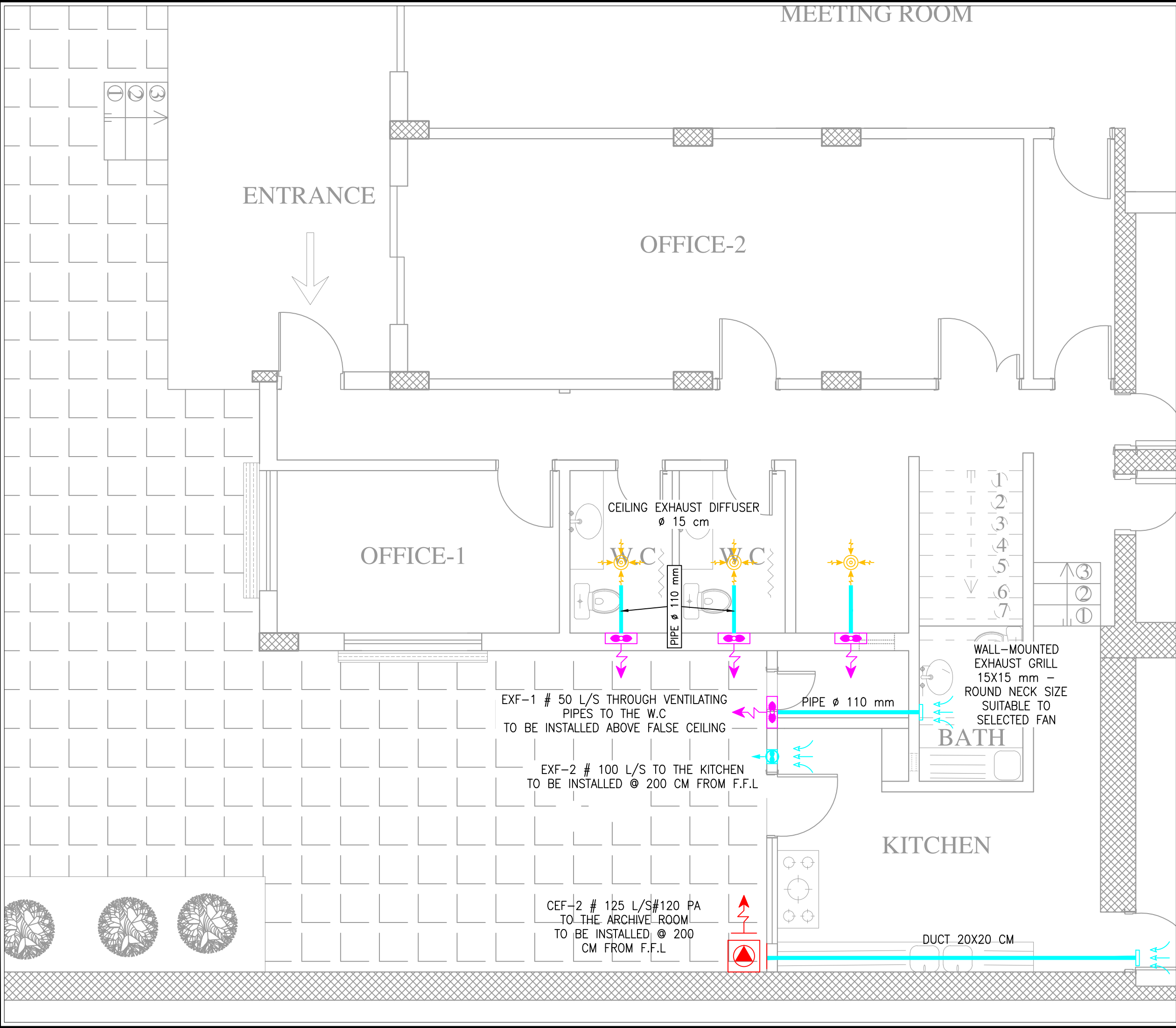


OFFICE FOR THE COORDINATION OF HUMANITARIAN AFFAIRS

PROJECT NAME :
REHABILITATION OF OCHA BUILDING
IN AL MAZEH

DRAWING TITLE :
AIR CONDITIONING LAYOUT

DESIGNED BY:	DRAWING NO. : M-01
APPROVED BY:	SCALE : 1:100
DATE: 03/12/2016	REV NO. :



GENERAL NOTES :

- THE COPPER PIPES DIAMETERS USED FOR EACH A.C UNIT SHALL CONFORM TO MANUFACTURE REQUIREMENT INSULATION AND INSTRUCTIONS.
- REFRIGERANT PIPES TO BE HIDDEN IN THE WALL AND IN THE SHORTEST ROUTE
- BOTH SHAPES (CIRCULAR OR SQUARE) OF EXHAUST DIFFUSER ARE ACCEPTED.
- ALL JOINTS AND CONNECTIONS SHALL BE TIGHTENED WELL.
- ALL HOT WATER PPR PIPES SHALL BE WELL THERMAL INSULATION [MINIMUM THICKNESS = 10 MM].
- THIS PLUMBING LAYOUT MAY BE REDRAW AFTER INSPECTION OF THE CONTRACTOR, AND FOLLOW THE SHORTEST ROUTE AND THE SAME OLD ROUTE OF MAIN SEWAGE PIPES.
- THE CONTRACTOR SHALL HAVE THE APPROVAL FROM SUPERVISOR ENGINEER WHEN MODIFIED THE DRAWING BEFORE EXECUTION.
- STACK VENTILATION PIPE IS REQUIRED, AND THE CONTRACTOR SHALL CHOOSE PROPER ROUTE FOR IT.

SYMBOLS	
HVAC	
	A.C - Indoor unit
	A.C - Outdoor unit
	Refrigerant Pipes
	Wall Exhaust Fan
	Wall Exhaust Grill
Plumbing	
	Hot Water Pipe [PPR]
	Cold Water Pipes [PPR]
	PVC Pipes
	Instant Water Heater

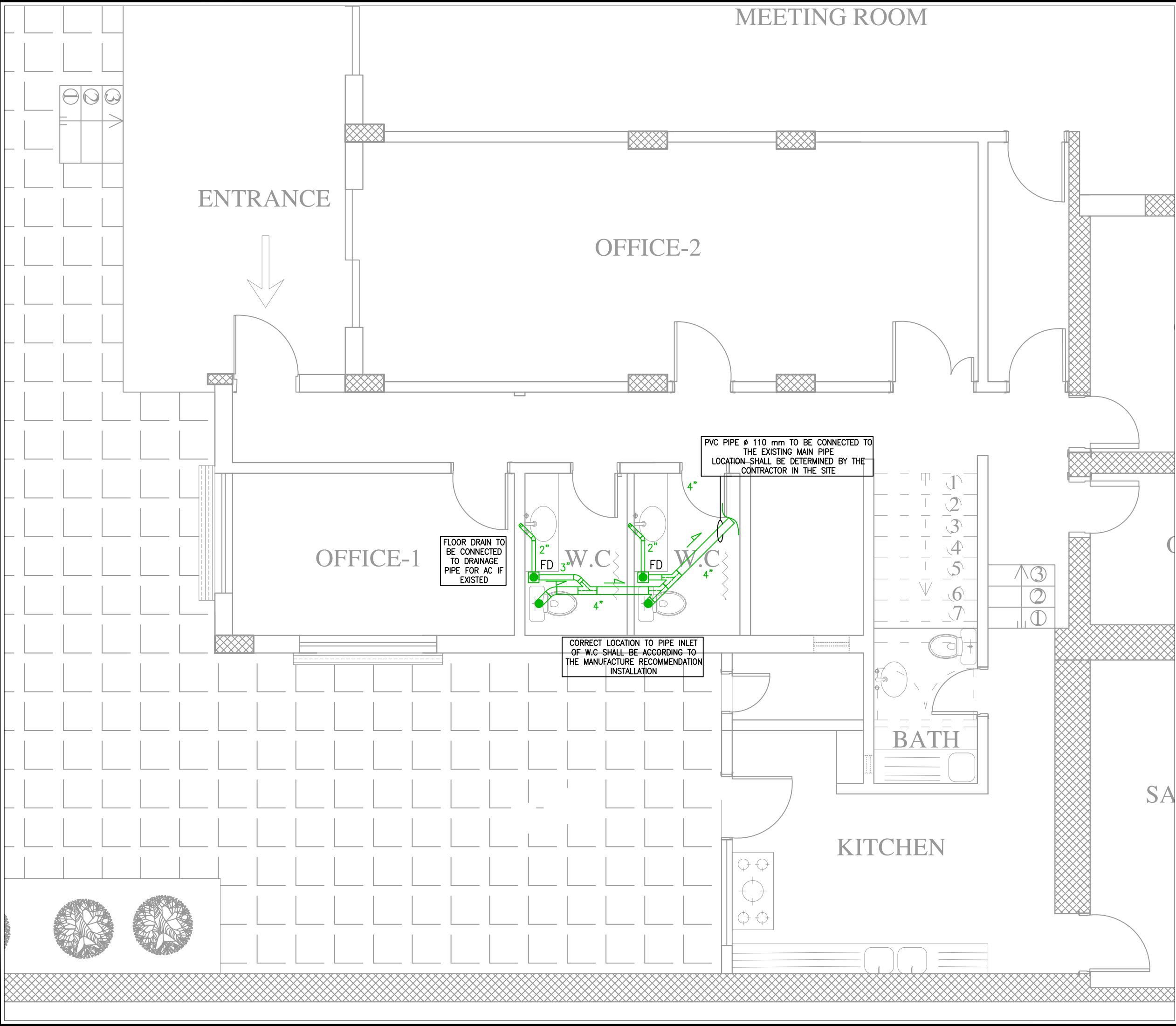
OCHA

OFFICE FOR THE COORDINATION OF HUMANITARIAN AFFAIRS

PROJECT NAME :
REHABILITATION OF OCHA BUILDING
IN AL MAZEH

DRAWING TITLE :
VENTILATION LAYOUT

DESIGNED BY:	DRAWING NO. : M-02
APPROVED BY:	SCALE : 1:50
DATE: 03/12/2016	REV NO. :



- GENERAL NOTES :
- THE COPPER PIPES DIAMETERS USED FOR EACH A.C UNIT SHALL CONFORM TO MANUFACTURE REQUIREMENT INSULATION AND INSTRUCTIONS.
 - REFRIGERANT PIPES TO BE HIDDEN IN THE WALL AND IN THE SHORTEST ROUTE
 - BOTH SHAPES (CIRCULAR OR SQUARE) OF EXHAUST DIFFUSER ARE ACCEPTED.
 - ALL JOINTS AND CONNECTIONS SHALL BE TIGHTENED WELL.
 - ALL HOT WATER PPR PIPES SHALL BE WELL THERMAL INSULATION [MINIMUM THICKNESS = 10 MM].
 - THIS PLUMBING LAYOUT MAY BE REDRAW AFTER INSPECTION OF THE CONTRACTOR, AND FOLLOW THE SHORTEST ROUTE AND THE SAME OLD ROUTE OF MAIN SEWAGE PIPES.
 - THE CONTRACTOR SHALL HAVE THE APPROVAL FROM SUPERVISOR ENGINEER WHEN MODIFIED THE DRAWING BEFORE EXECUTION.
 - STACK VENTILATION PIPE IS REQUIRED, AND THE CONTRACTOR SHALL CHOOSE PROPER ROUTE FOR IT.

SYMBOLS	
HVAC	
	A.C - Indoor unit
	A.C - Outdoor unit
	Refrigerant Pipes
	Wall Exhaust Fan
	Wall Exhaust Grill
Plumbing	
	Hot Water Pipe [PPR]
	Cold Water Pipes [PPR]
	PVC Pipes
	Instant Water Heater



OFFICE FOR THE COORDINATION OF HUMANITARIAN AFFAIRS

PROJECT NAME :
REHABILITATION OF OCHA BUILDING
IN AL MAZEH

DRAWING TITLE :
PLUMBING - WASTE WATER - LAYOUT

DESIGNED BY:	DRAWING NO. : M-03
APPROVED BY:	SCALE : 1:50
DATE: 03/12/2016	REV NO. :

