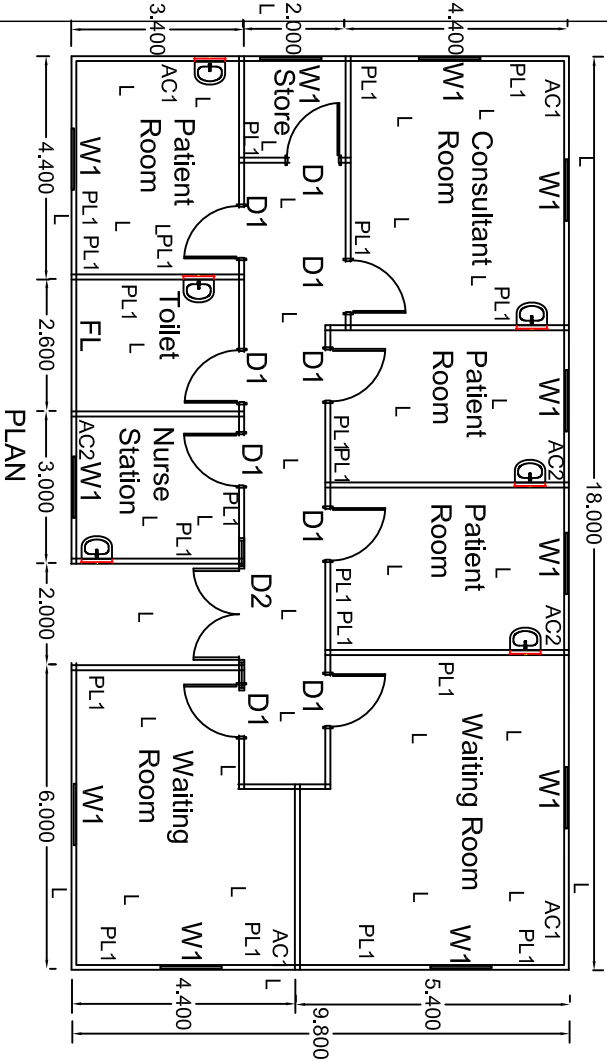
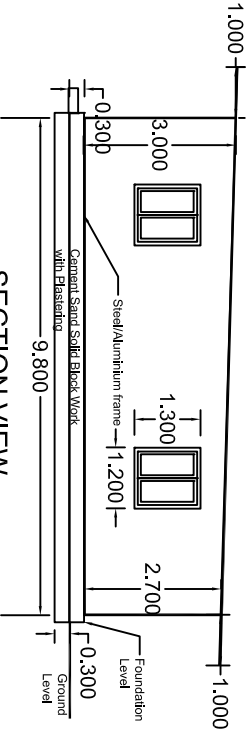


Proposed Prefab Health Care Building for Kikla

FRONT VIEW



Work Shedule

D1: 1000x2300 mm single and off white doors with aluminum frame, sandwich panels with all the necessary fittings including door locks, door handle, stopper suitable for prefab building  
D2: 1800x2300 mm double and off white doors with aluminum frame, sandwich panels with all the necessary fittings including door locks, door handle, stopper suitable for prefab building  
W1: 1200x1300 mm sliding windows with aluminum frame, tinted glass with all the necessary accessories including lock, handle, fastener suitable for prefab building  
FL: 500x300 mm sliding fanlight with aluminum frame suitable for prefab building  
Structure: Galvanized iron or Aluminum frame suitable for prefab building including all necessary coating  
Wall: off white sandwich panels with a steel surface layer and core layer consisting of polyurethane foam  
Roof: Green or Blue or Gray Sandwich panels with a steel surface layer and a core layer consisting of polyurethane foam  
Flooring: Porcelain or similar quality tile floor with 15 mm thick (1:2) cement mortar with 1" chicken mesh and fixed with appropriate adhesive  
L: Minimum two of 900 mm complete fluorescent light set including all necessary fittings suitable for prefab  
PL: 5 AMP power plug point with all necessary connection  
AC1: 1800 BTU split type AC with one year warranty including all necessary fitting suitable for prefab  
AC2: 1200 BTU split type AC with one year warranty including all necessary fitting suitable for prefab  
Power Connection: all necessary power connection with suitable insulation including switches, control panel, Main breaker, distribution board and connection to the existing power source

		UNITED NATIONS DEVELOPMENT PROGRAMME		SHEET CONTENT:		SCALE:		REV. No:	
Libya		DRAWING TITLE: Proposed Prefab Health Care Building for Kikla		Plan, Section and Elevation		1:100		000	
		DRAWING Type: General:				DATE: 16th of January 2016			
PROJECT TITLE Stabilisation Facilities for Libya		DESIGN AND DRAWN BY: Emmanuel Rotian Suresh				CONTRACT No:			
		REVIEWED BY: MAHER ALKALOTH				APPROVED FOR IMPLEMENTATION:			
UN								DRAWING No:	
DP								P-1	