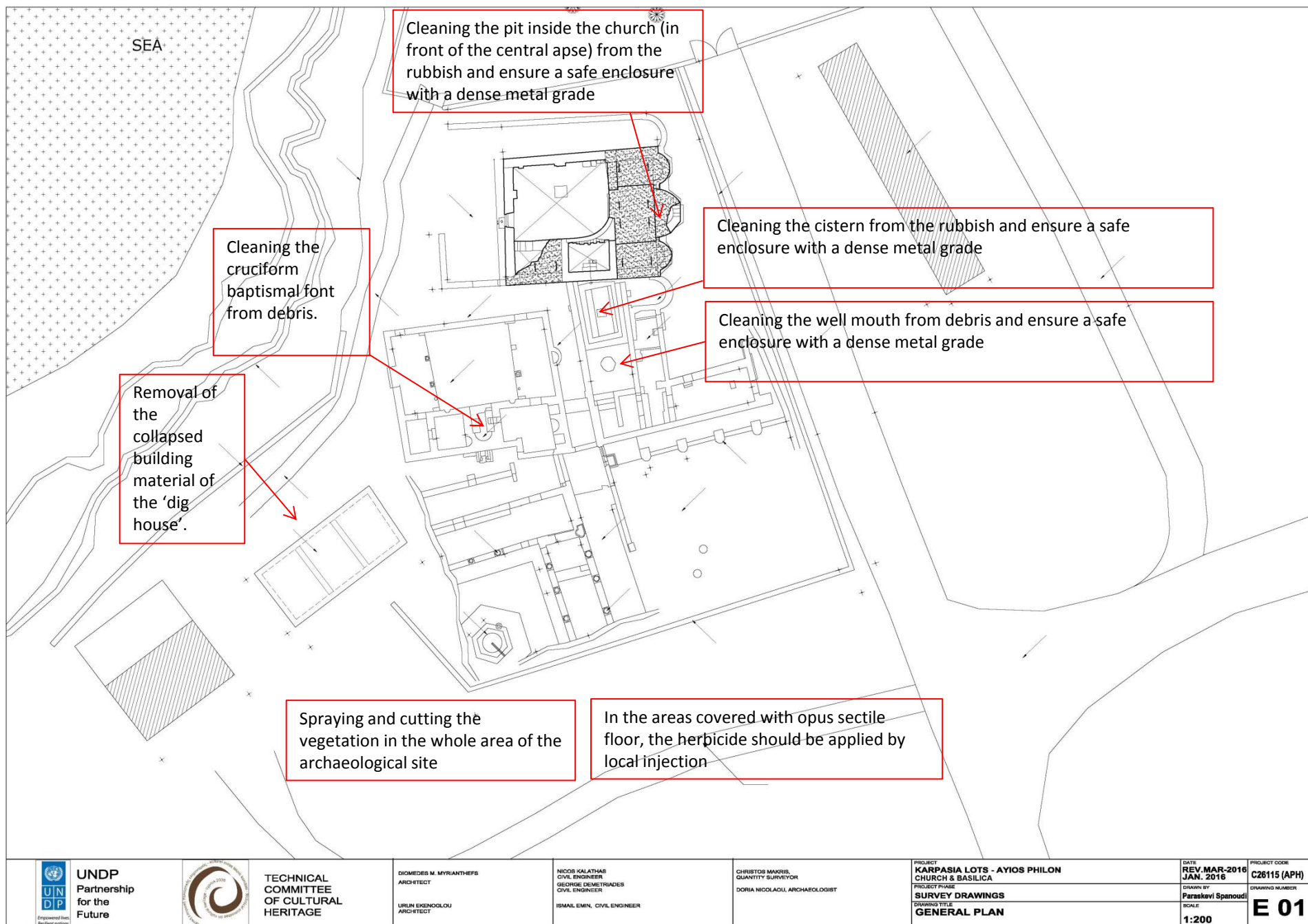
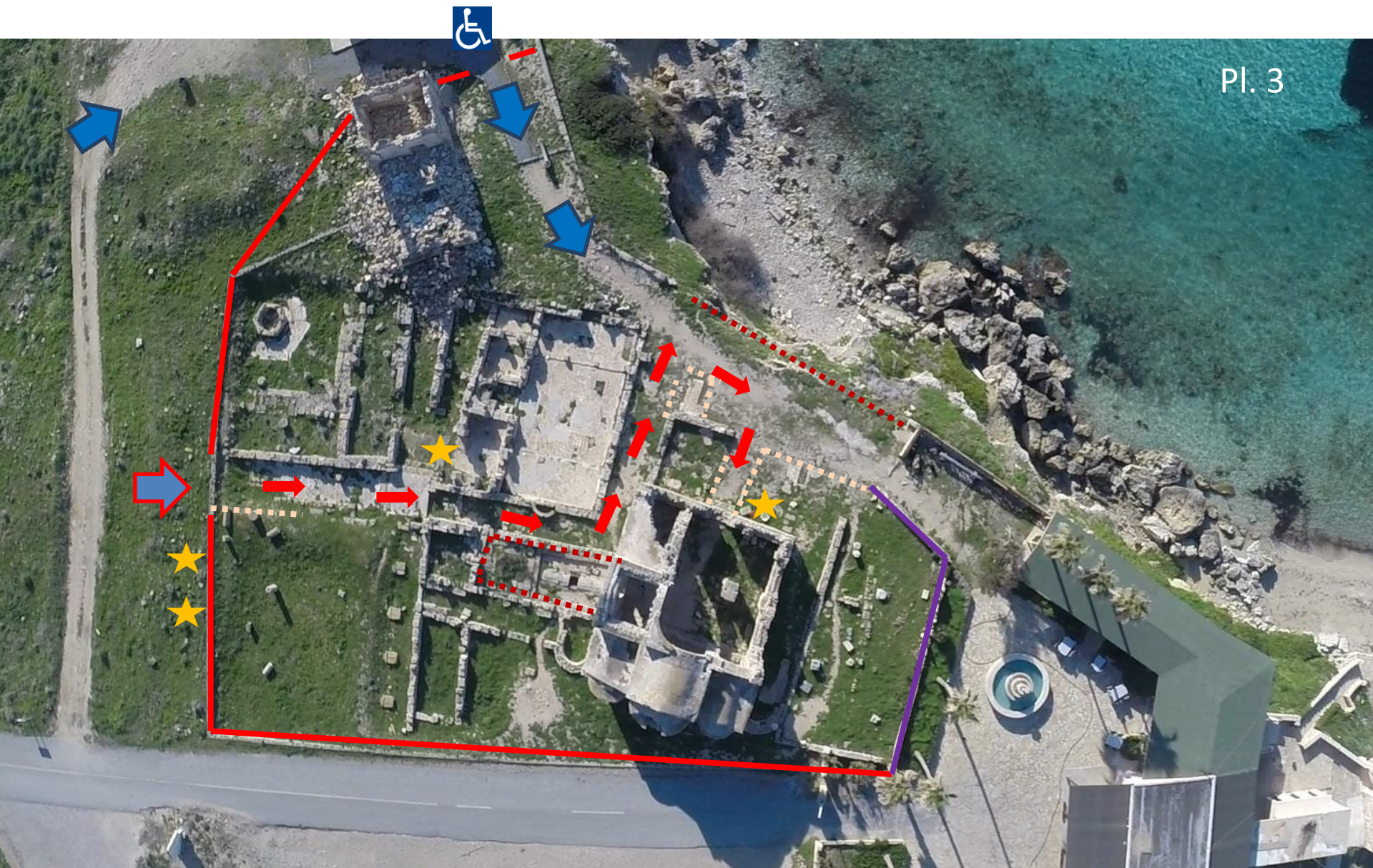


Pl. 1: Parts of Agios Philon (Ayfilon) archaeological site as described in the text



Pl. 2: Preparation of the site



— Fence

➡ Main entrance of the site

♿ Access for people with mobility disabilities

➡ Obligatory route of the visitors

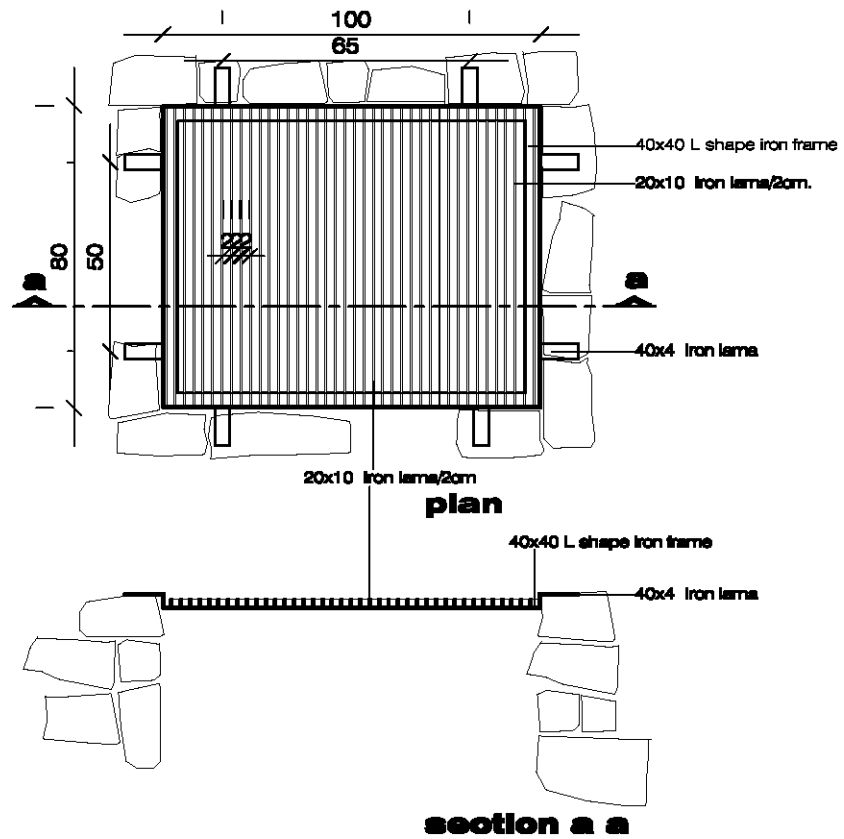
➡ Wheel chair access route

★ Informative panel for the visitors

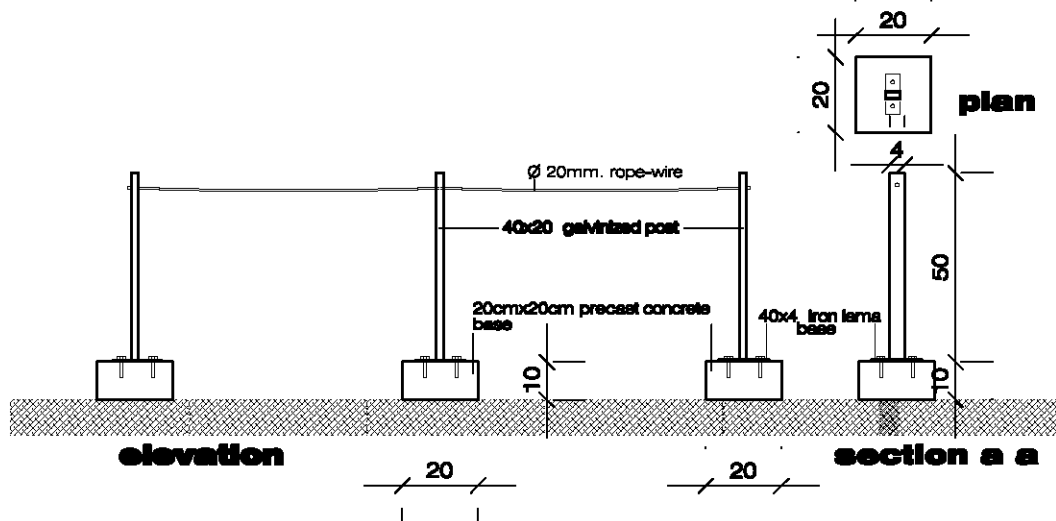
— Row of stones in order to delimitate the reburial areas

— Extension of the existing dry wall

... Rope wire secured on galvanized posts fixed on cement bases



A.



B.

Iron grate cover and limiting post details
scale 1/20



United Nations Development Programme Partnership for the Future			Mech 5017	
Iron grate cover and limiting post plan section			scale	sheet no
Architect: Bülent Kızılduman			1/20	007
Civil engineer: Cem Yenerli				

Pl. 4