

ANNEX 1 – Terms of Reference

GEOTECHNICAL INVESTIGATIONS

MARTINENGO BASTION COURTYARD in FAMAGUSTA

The objective is to investigate the soil conditions and the geotechnical properties of the Martinengo Bastion courtyard and Tanners' Mosque in Famagusta;

- 9 boreholes in Martinengo courtyard
- 2 boreholes in Tanners' mosque

There will be 9 boreholes in Martinengo courtyard and 2 boreholes in Tanners' mosque.

The points of the boreholes will be established on sites.

Undisturbed samples shall be obtained.

Boreholes will be up to 12 meters.

The laboratory will prepare method statement for the tests to be carried out with health safety measures described.

The laboratory should take all measures to protect existing structures, fittings and fixtures on site.

The laboratory shall undertake the activities as per the following timelines;

- The laboratory is to start boreholes activity within 72 hours of contract signature,
- The report of the geotechnical investigation will be submitted within 21 days of contract signature.

Payment will be made upon completion of tests, reporting and acceptance of the report by UNDP.

The scope of the geotechnical investigation will be:

- Boreholes
- In-situ testing
- Sampling
- Laboratory testing of the following;
 - o Standard Penetration Test (SPT)/Depth
 - o Quick triaxial test
 - o Moisture content
 - o Atterberg limits
 - o Particle size distribution
 - o Unconfined compressive tests
 - o Direct shear box strength test
 - o Consolidation and swelling pressure test

- Assessment of the results of the field work and laboratory tests and collation of a report with conclusions on the geotechnical properties of the soil strata underlying the site in relation to the usage of the site/courtyard and any recommendations for further action if needed

The report is to include the following headings but not limited to;

A. Site description

- Description of the site/location (Area morphology and site geology)

B. Ground investigations-work carried out

- Description of the field works/ tests
- Water tables and water levels

C. Ground conditions

- Geotechnical characteristics/sections (Description of the soil stratigraphy based on the boreholes).
- Hydrological conditions.

D. Geotechnical considerations

- Determine bearing capacity
- Determine the soil bulk modulus (Es).
- Determine the Modulus of sub-grade reaction (Ks).
- Table/s with all the Mechanical Characteristics.

The following items must be submitted in the appendix:


- Standard Penetration Test (SPT)/Depth
- Quick triaxial test
- Moisture content
- Atterberg limits
- Particle size distribution
- Unconfined compressive tests
- Direct shear box strength test
- Consolidation and swelling pressure test
- Photographic documentation

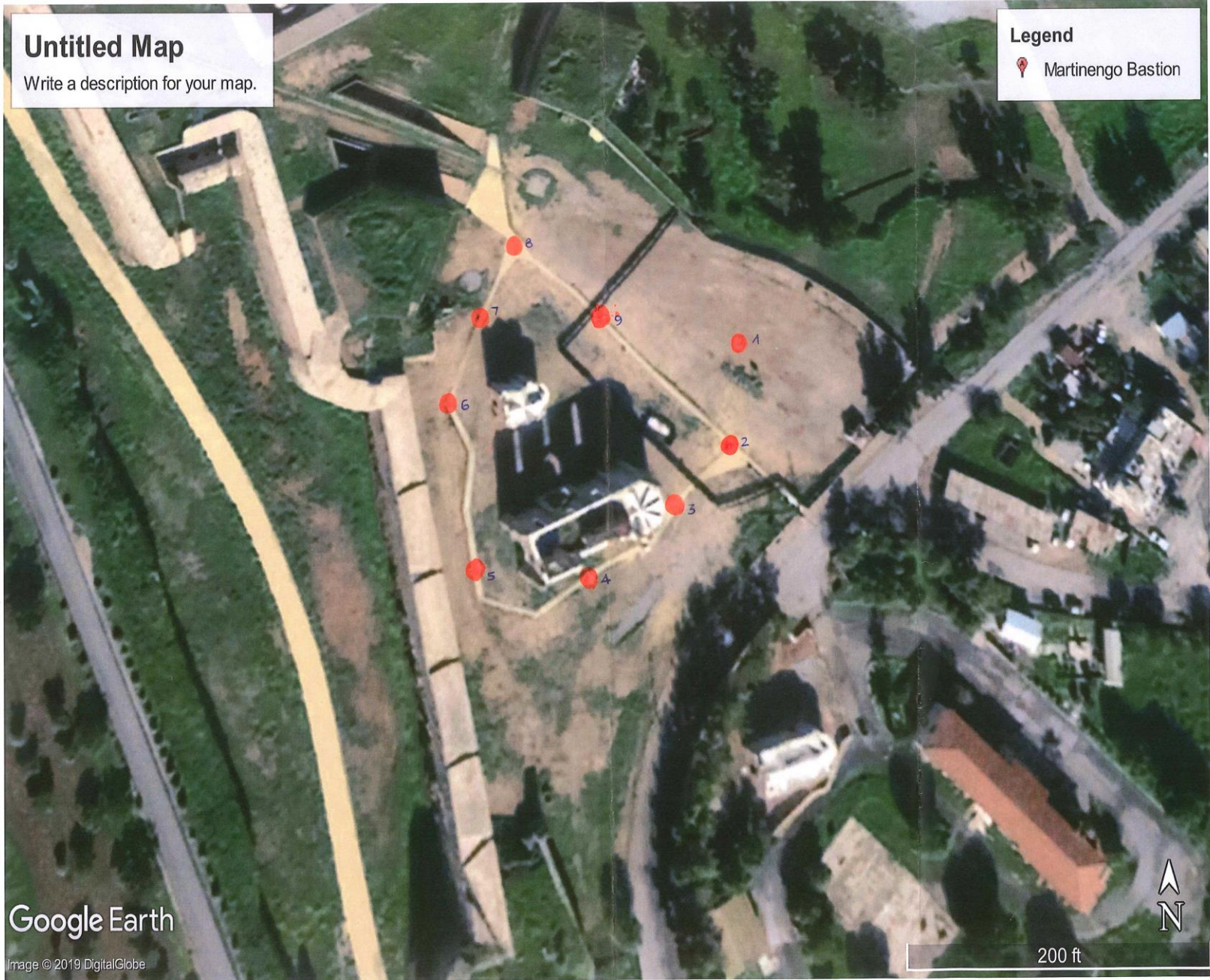
E. Data evaluation report

Untitled Map

Write a description for your map.

Legend

 Martinengo Bastion



Google Earth

Image © 2019 DigitalGlobe

200 ft

