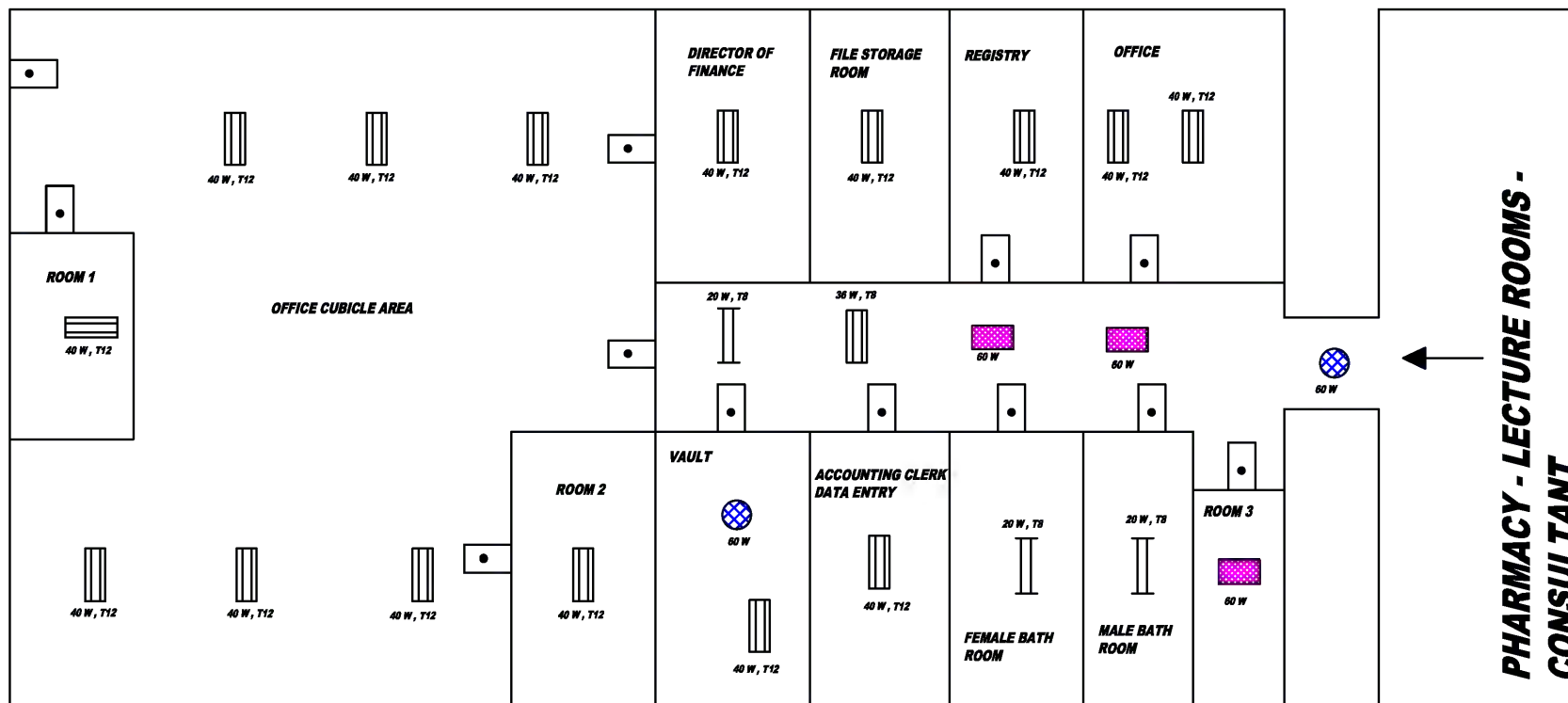


LIGHTING LAYOUT - METER #
1350261



KEY

	DOOR
	2 FT DOUBLE FLUORESCENT
	4 FT SINGLE FLUORESCENT
	4 FT DOUBLE FLUORESCENT
	CFL
	INCANDESCENT



POWERGEN LTD.
Energy, Commerce and Engineering

PowerGen Limited
24 Derrymore Road, Kingston 10
Kingston, Jamaica, West Indies
Telephone: 876 754 2323
Fax: 876 906 4963
Email: info@powergen-jm.com
<http://www.powergen-jm.com>

LIGHTING LAYOUT - METER # 1350261

PHARMACY - OFFICES

INVESTMENT GRADE ENERGY AUDIT FOR SIX
HOSPITALS
[Project ID#: 00087974 (UNDP)]
ENTITY: PETROLEUM CORPORATION OF
JAMAICA

ADDRESS: 36 TRAFALGAR ROAD
KINGSTON 10, JAMAICA

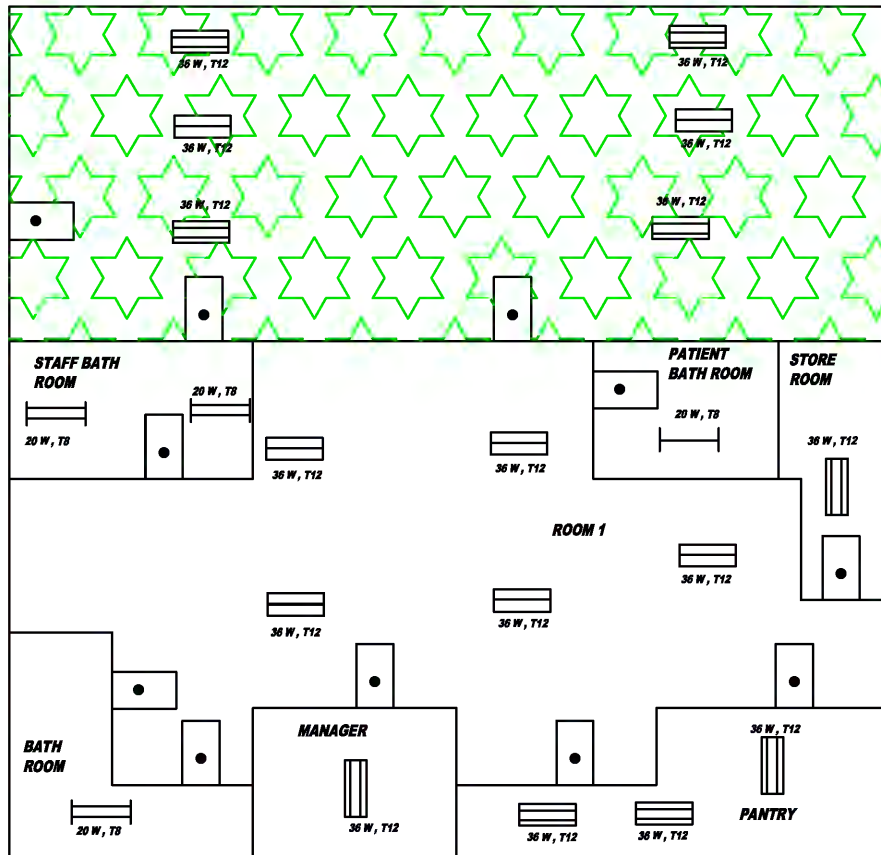
CONTACT: 876-929-5380

SOUTH EAST REGIONAL HEALTH
AUTHORITY

BELLEVUE HOSPITAL

WINWARD ROAD,
KINGSTON 2,
Jamaica

**DRAWING NOT DONE TO
SCALE**



KEY

	VERANDA
	DOOR
	2 FT SINGLE FLUORESCENT
	2 FT DOUBLE FLUORESCENT
	4 FT SINGLE FLUORESCENT
	4 FT DOUBLE FLUORESCENT

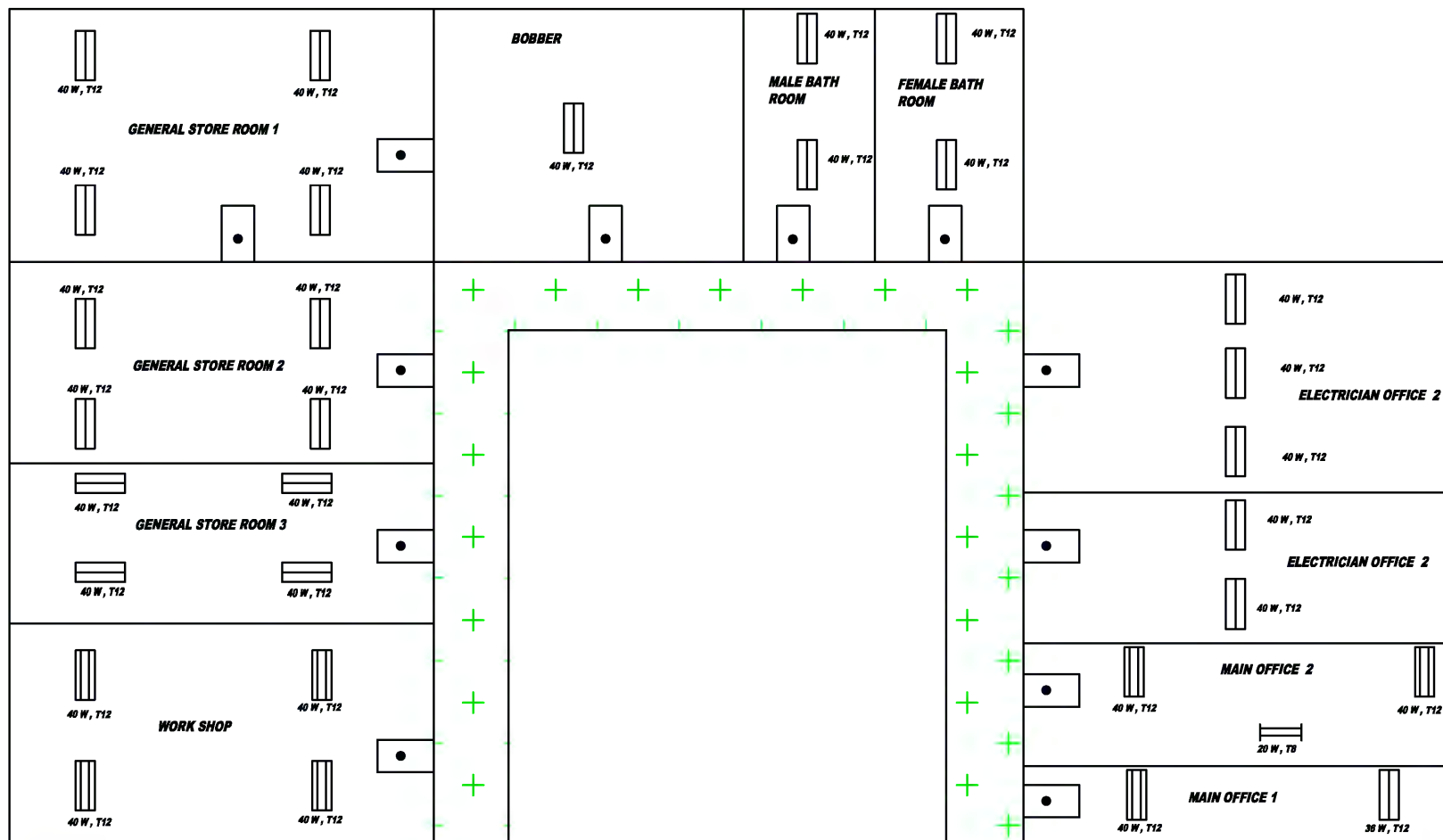


PowerGen Limited
 24 Derrymore Road, Kingston 10
 Kingston, Jamaica, West Indies
 Telephone: 876 754 2323
 Fax: 876 906 4963
 Email: info@powergen-jm.com
<http://www.powergen-jm.com>

LIGHTING LAYOUT - METER # 1350261

OCCUPATIONAL THERAPY

INVESTMENT GRADE ENERGY AUDIT FOR SIX HOSPITALS (Project ID#: 00087974 (UNDP))	SOUTH EAST REGIONAL HEALTH AUTHORITY
ENTITY: PETROLEUM CORPORATION OF JAMAICA	BELLEVUE HOSPITAL
ADDRESS: 36 TRAFALGAR ROAD KINGSTON 10, JAMAICA	WINWARD ROAD, KINGSTON 2, Jamaica
CONTACT: 876-929-5380	DRAWING NOT DONE TO SCALE



PowerGen Ltd.
Energy Solutions

PowerGen Limited
24 Derrymore Road, Kingston 10
Kingston, Jamaica, West Indies
Telephone: 876 754 2323
Fax: 876 906 4963
Email: info@powergen-jm.com
<http://www.powergen-jm.com>

LIGHTING LAYOUT - METER # 1350261

MAINTENANCE

INVESTMENT GRADE ENERGY AUDIT FOR SIX
HOSPITALS
[Project ID#: 00067974 (UNDP)]

ENTITY: PETROLEUM CORPORATION OF
JAMAICA

ADDRESS: 36 TRAFALGAR ROAD
KINGSTON 16, JAMAICA

CONTACT: 876-929-5380

**SOUTH EAST REGIONAL HEALTH
AUTHORITY**

BELLEVUE HOSPITAL

**WINWARD ROAD,
KINGSTON 2,
Jamaica**

**DRAWING NOT DONE TO
SCALE**

KEY



CORRIDOR



DOOR



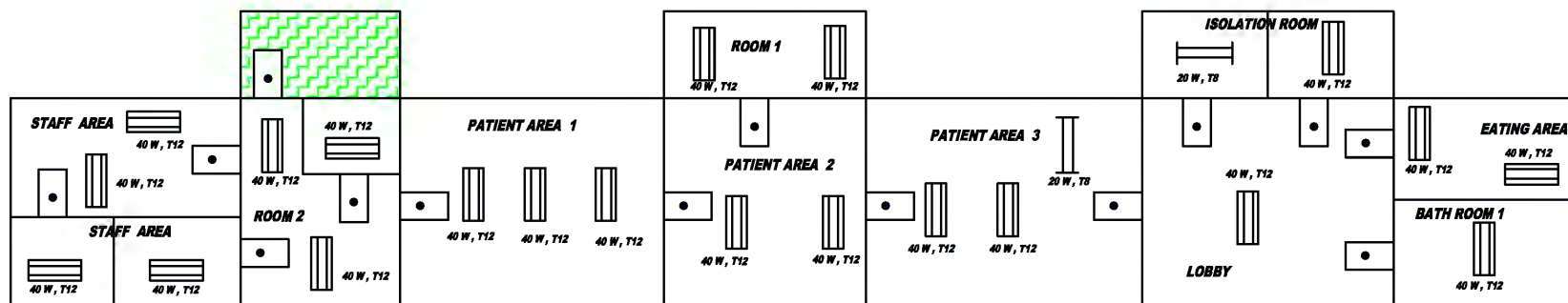
**2 FT DOUBLE
FLUORESCENT**



**4 FT SINGLE
FLUORESCENT**





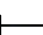





**4 FT DOUBLE
FLUORESCENT**



LOWER C

KEY

	STAIRCASE
	CORRIDOR
	VERANDA
	DOOR
	2 FT SINGLE FLUORESCENT
	2 FT DOUBLE FLUORESCENT
	4 FT SINGLE FLUORESCENT
	4 FT DOUBLE FLUORESCENT



POWERGEN LTD.
SOLUTIONS

PowerGen Limited
24 Derrymore Road, Kingston 10
Kingston, Jamaica, West Indies
Telephone: 876 754 2323
Fax: 876 906 4963
Email: info@powergen-jm.com
<http://www.powergen-jm.com>

LIGHTING LAYOUT - METER # 1350261

LOWER C

INVESTMENT GRADE ENERGY AUDIT FOR SIX
HOSPITALS
(Project ID#: 00087974 (UNDP))

ENTITY: PETROLEUM CORPORATION OF
JAMAICA

ADDRESS: 36 TRAFALGAR ROAD
KINGSTON 10, JAMAICA

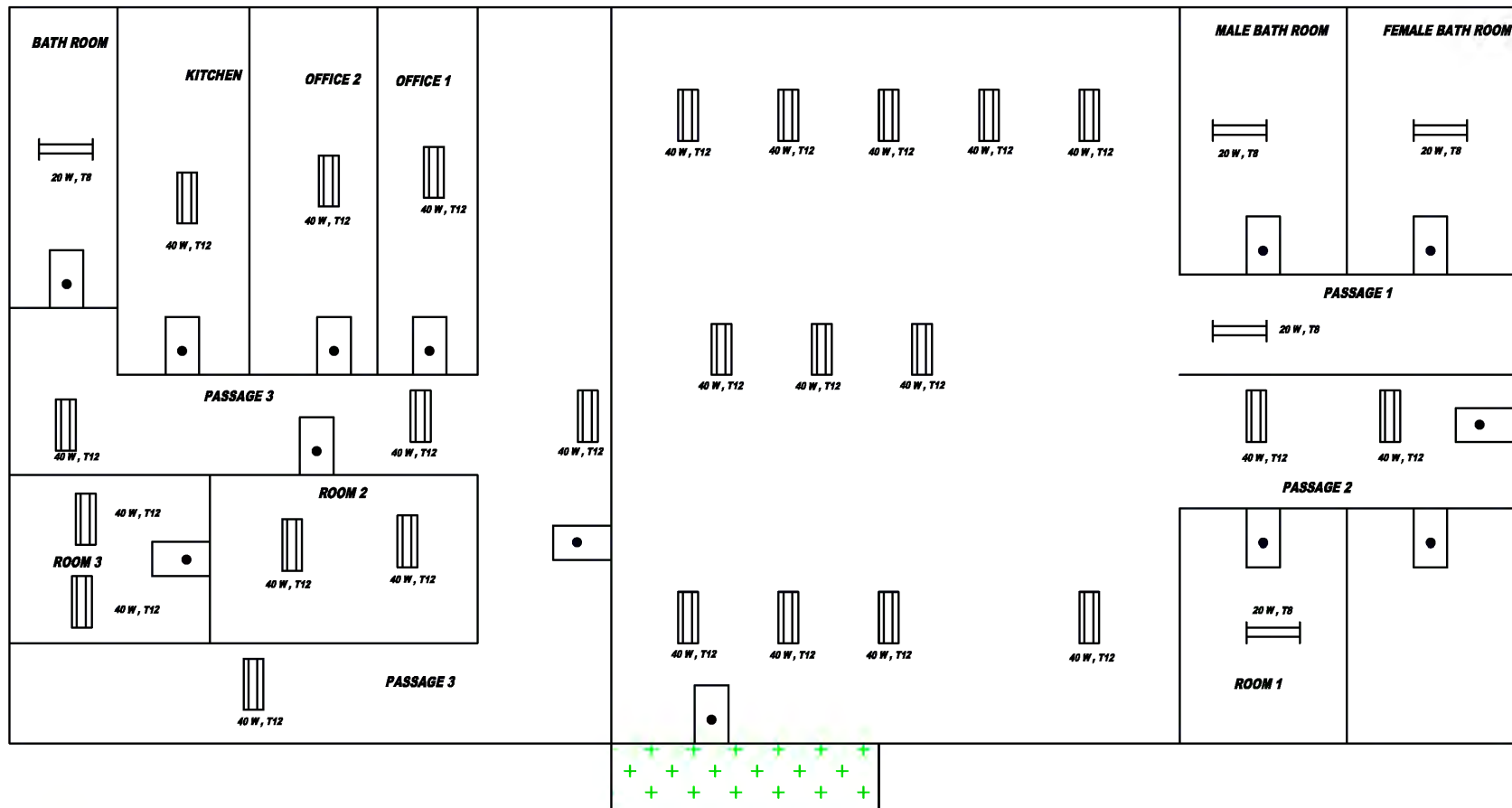
CONTACT: 876-925-5380

**SOUTH EAST REGIONAL HEALTH
AUTHORITY**

BELLEVUE HOSPITAL

**WINWARD ROAD,
KINGSTON 2,
Jamaica**

**DRAWING NOT DONE TO
SCALE**



PowerGen Limited
24 Derrymore Road, Kingston 10
Kingston, Jamaica, West Indies
Telephone: 876 754 2323
Fax: 876 906 4963
Email: info@powergen-jm.com
<http://www.powergen-jm.com>

LIGHTING LAYOUT - METER # 1350261

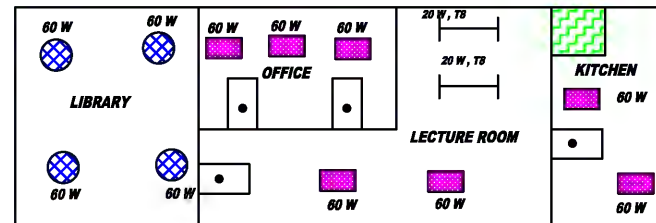
LAUNDRY

INVESTMENT GRADE ENERGY AUDIT FOR SIX HOSPITALS [Project ID: 00087974 (UNDP)]	SOUTH EAST REGIONAL HEALTH AUTHORITY
ENTITY: PETROLEUM CORPORATION OF JAMAICA	BELLEVUE HOSPITAL
ADDRESS: 36 TRAFALGAR ROAD KINGSTON 10, JAMAICA	WINWARD ROAD, KINGSTON 2, Jamaica
CONTACT: 876-929-5380	DRAWING NOT DONE TO SCALE

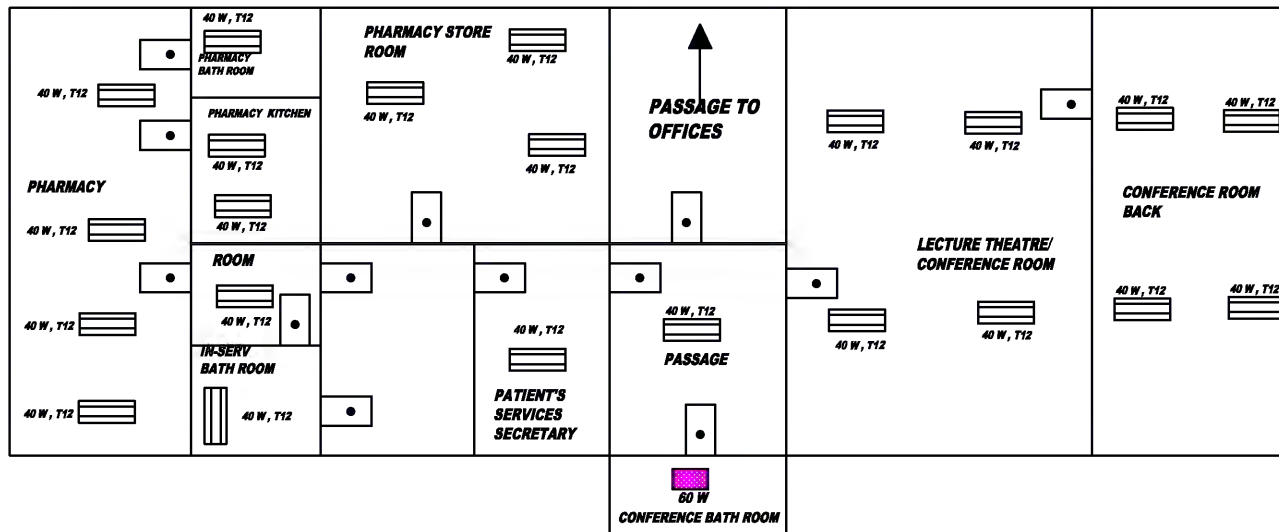
KEY

	CORRIDOR
	DOOR
	2 FT DOUBLE FLUORESCENT
	4 FT DOUBLE FLUORESCENT

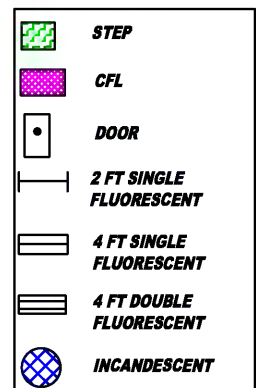
IN SERVICE 2



IN SERVICE 1



KEY

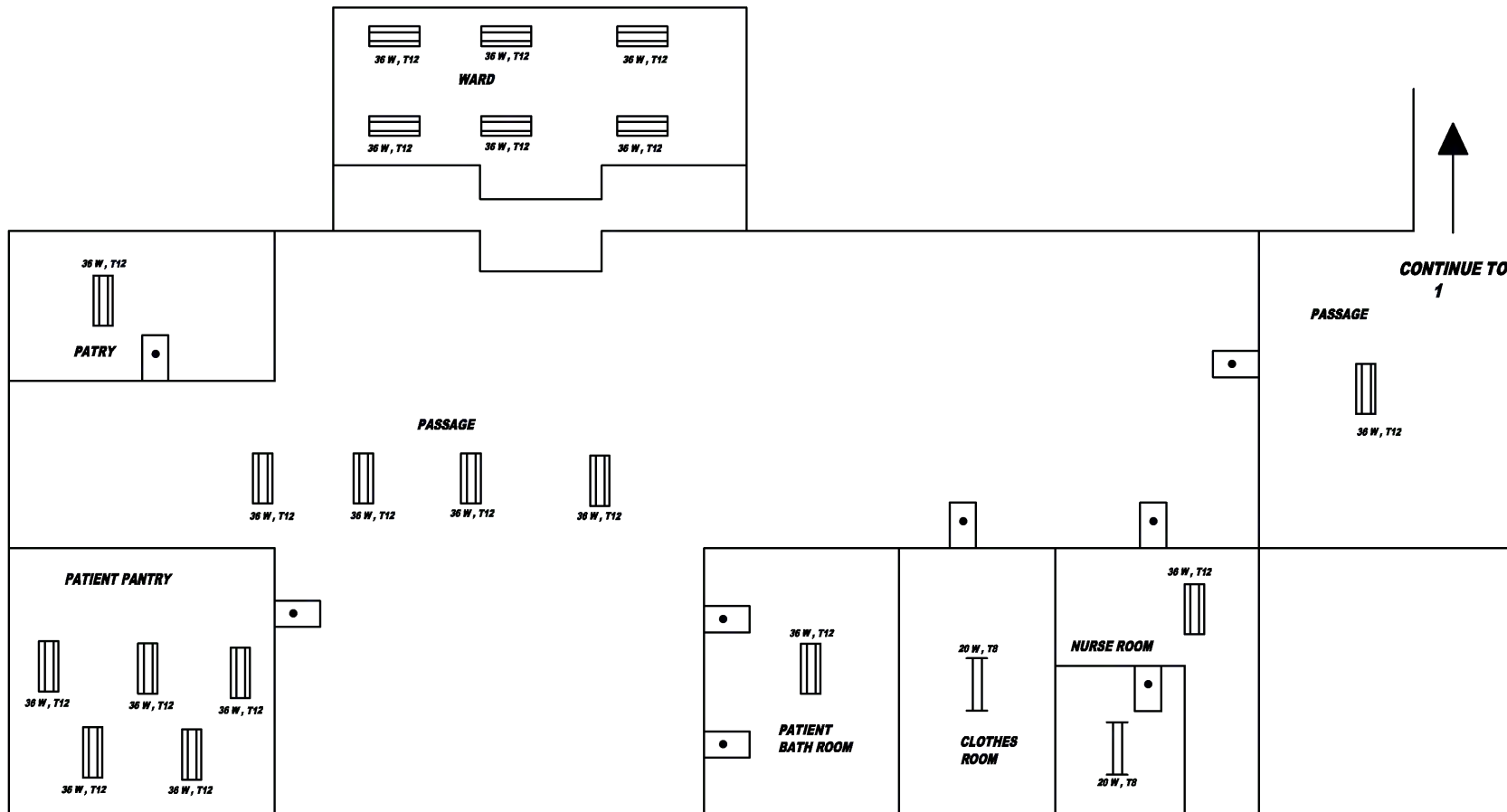


PowerGen Limited
 24 Derrymore Road, Kingston 10
 Kingston, Jamaica, West Indies
 Telephone: 876 754 2323
 Fax: 876 906 4963
 Email: info@powergen-jm.com
<http://www.powergen-jm.com>

LIGHTING LAYOUT - METER # 1350261

IN SERVICE - 1 - 2

INVESTMENT GRADE ENERGY AUDIT FOR SIX HOSPITALS [Project ID#: 00087974 (UNDP)]	SOUTH EAST REGIONAL HEALTH AUTHORITY
ENTITY: PETROLEUM CORPORATION OF JAMAICA	BELLEVUE HOSPITAL
ADDRESS: 36 TRAFALGAR ROAD KINGSTON 10, JAMAICA	WINWARD ROAD, KINGSTON 2, Jamaica
CONTACT: 876-929-5380	DRAWING NOT DONE TO SCALE



KEY

	2000 SINGLE FLUORESCENT
	2 FT DOUBLE FLUORESCENT
	4 FT DOUBLE FLUORESCENT



PowerGen Ltd.
Energy, Commerce and Engineering

PowerGen Limited
24 Derrymore Road, Kingston 10
Kingston, Jamaica, West Indies
Telephone: 876 754 2323
Fax: 876 906 4963
Email: info@powergen-jm.com
<http://www.powergen-jm.com>

LIGHTING LAYOUT - METER # 1350261

HIBISCUS 2

INVESTMENT GRADE ENERGY AUDIT FOR SIX
HOSPITALS
(Project ID#: 00087974 (UNDP))

ENTITY: PETROLEUM CORPORATION OF
JAMAICA

ADDRESS: 36 TRAFALGAR ROAD
KINGSTON 10, JAMAICA

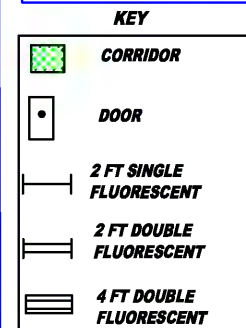
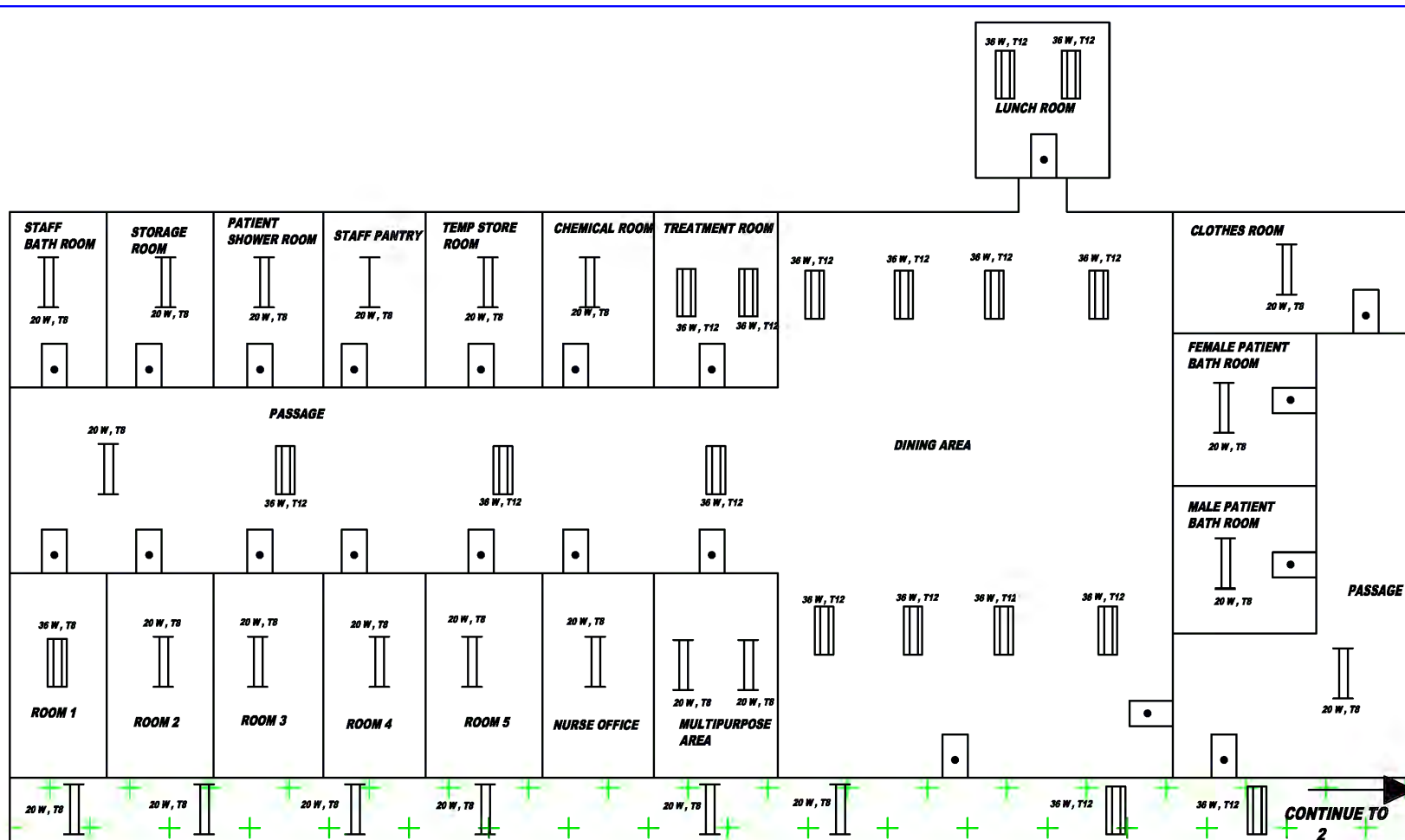
CONTACT: 876-929-5380

**SOUTH EAST REGIONAL HEALTH
AUTHORITY**

BELLEVUE HOSPITAL

**WINWARD ROAD,
KINGSTON 2,
Jamaica**

**DRAWING NOT DONE TO
SCALE**



POWERGEN LTD.

PowerGen Limited
24 Derrymore Road, Kingston 10
Kingston, Jamaica, West Indies
Telephone: 876 754 2323
Fax: 876 906 4963
Email: info@powergen-jm.com
<http://www.powergen-jm.com>

INVESTMENT GRADE ENERGY AUDIT FOR SIX
HOSPITALS
(Project ID#: 00087974 (UNDP))

ENTITY: PETROLEUM CORPORATION OF
JAMAICA

ADDRESS: 36 TRAFALGAR ROAD
KINGSTON 10, JAMAICA

CONTACT: 876-928-5380

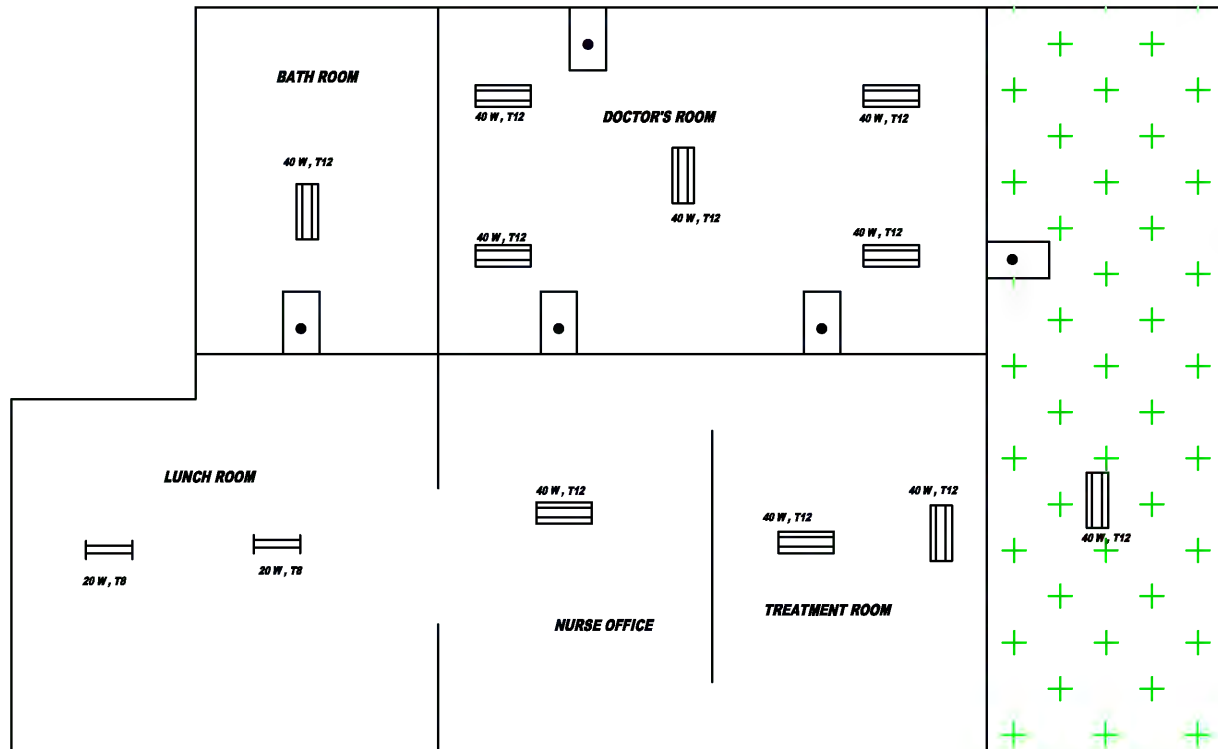
**SOUTH EAST REGIONAL HEALTH
AUTHORITY**

BELLEVUE HOSPITAL

**WINWARD ROAD,
KINGSTON 2,
Jamaica**

**DRAWING NOT DONE TO
SCALE**

**CONTINUE TO
2**



KEY

	CORRIDOR
	DOOR
	2 FT DOUBLE FLUORESCENT
	4 FT DOUBLE FLUORESCENT



POWERGEN LTD.
Energy. Commerce. and Environment.

PowerGen Limited
24 Derrymore Road, Kingston 10
Kingston, Jamaica, West Indies
Telephone: 876 754 2323
Fax: 876 906 4963
Email: info@powergen-jm.com
<http://www.powergen-jm.com>

LIGHTING LAYOUT - METER # 1350261

EMERGENCY ROOM

INVESTMENT GRADE ENERGY AUDIT FOR SIX
HOSPITALS
(Project ID#: 00087974 (UNDP))

ENTITY: PETROLEUM CORPORATION OF
JAMAICA

ADDRESS: 36 TRAFALGAR ROAD
KINGSTON 10, JAMAICA

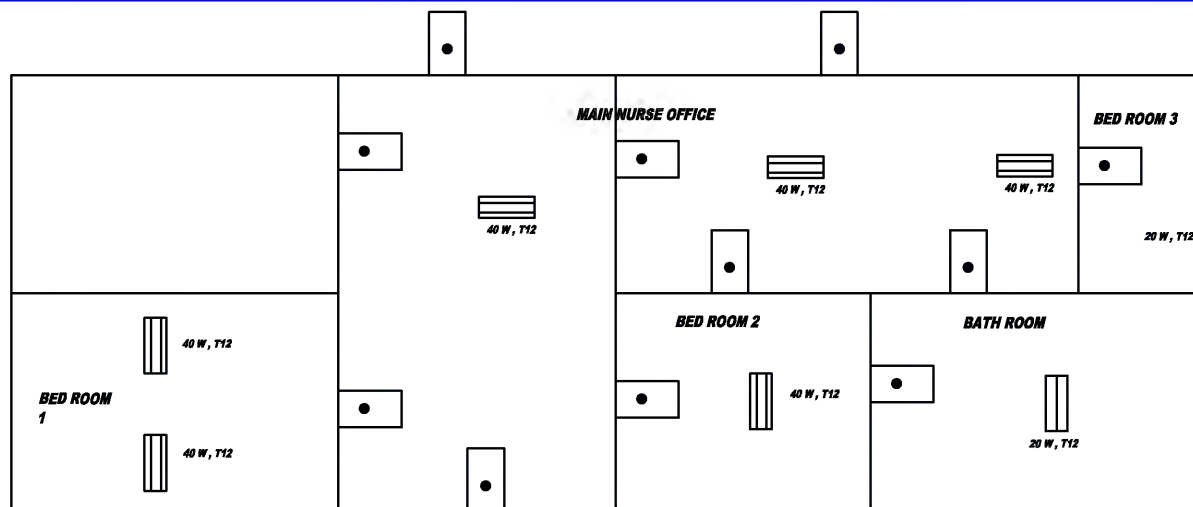
CONTACT: 876-929-5390

**SOUTH EAST REGIONAL HEALTH
AUTHORITY**

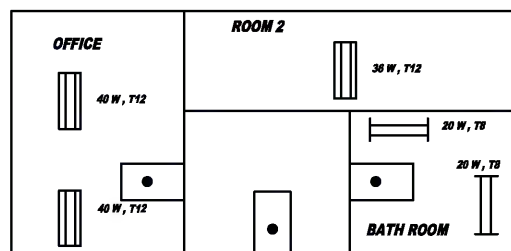
BELLEVUE HOSPITAL

**WINWARD ROAD,
KINGSTON 2,
Jamaica**

**DRAWING NOT DONE TO
SCALE**



**EASTERN DIVISION
BUILDING**



CENTRAL SUPPLY SERVICE DEPARTMENT



PowerGen Ltd.
Energy, Commerce and Engineering

PowerGen Limited
24 Derrymore Road, Kingston 10
Kingston, Jamaica, West Indies
Telephone: 876 754 2323
Fax: 876 906 4963
Email: info@powergen-jm.com
<http://www.powergen-jm.com>

LIGHTING LAYOUT - METER # 1350261

**EASTERN DIVISION BUILDING -
NURSING OFFICES - CENTRAL SERVICES
DEPARTMENT**

INVESTMENT GRADE ENERGY AUDIT FOR SIX
HOSPITALS
[Project ID#: 00087574 (UNDP)]

ENTITY: PETROLEUM CORPORATION OF
JAMAICA

ADDRESS: 36 TRAFALGAR ROAD
KINGSTON 10, JAMAICA

CONTACT: 876-929-5380

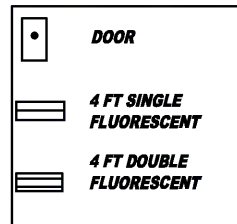
**SOUTH EAST REGIONAL HEALTH
AUTHORITY**

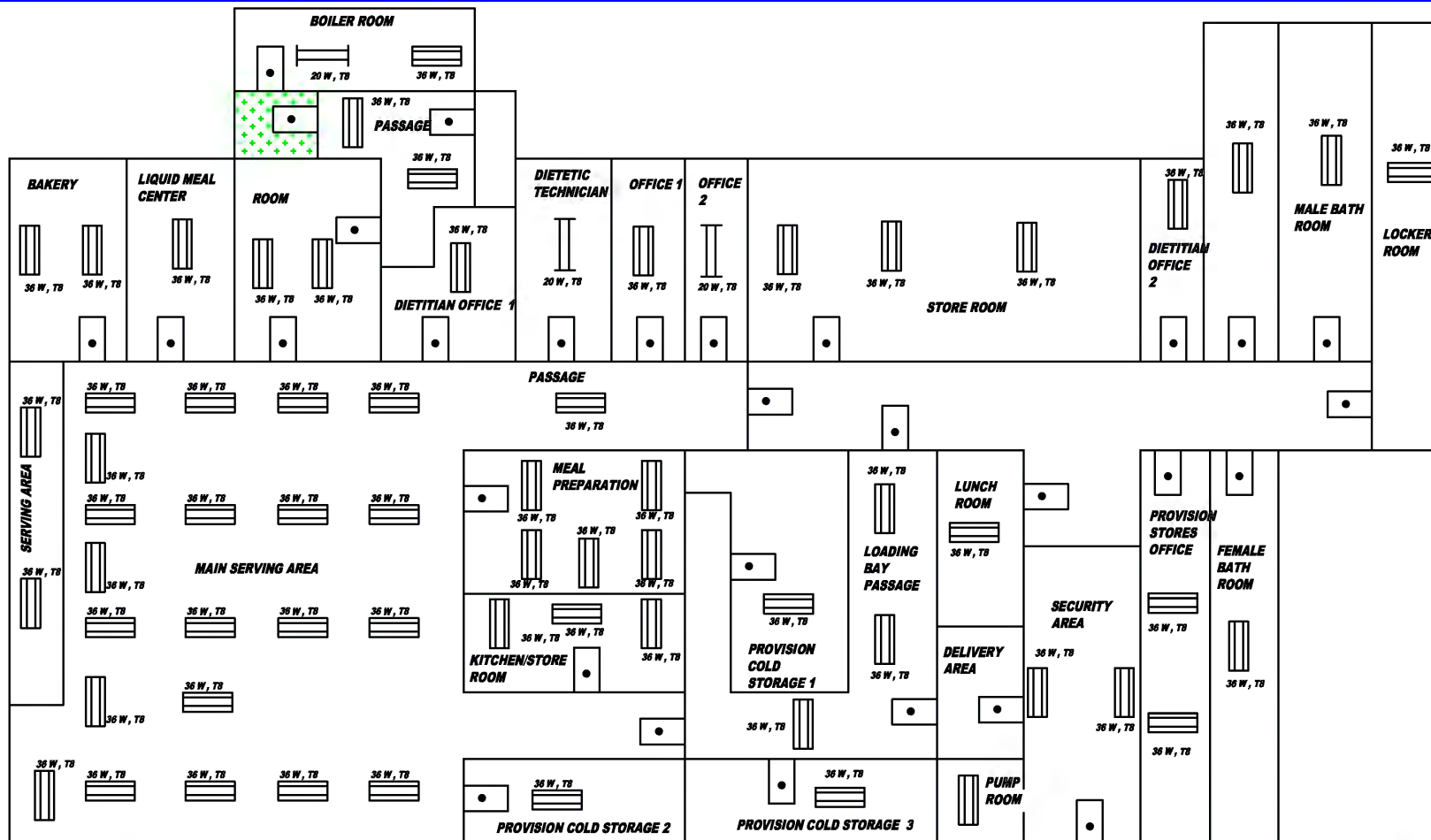
BELLEVUE HOSPITAL

**WINWARD ROAD,
KINGSTON 2,
Jamaica**

**DRAWING NOT DONE TO
SCALE**

KEY





KEY

	CORRIDOR
	DOOR
	2 FT DOUBLE FLUORESCENT
	4 FT SINGLE FLUORESCENT
	4 FT DOUBLE FLUORESCENT



PowerGen LTD.
Optimizing Energy

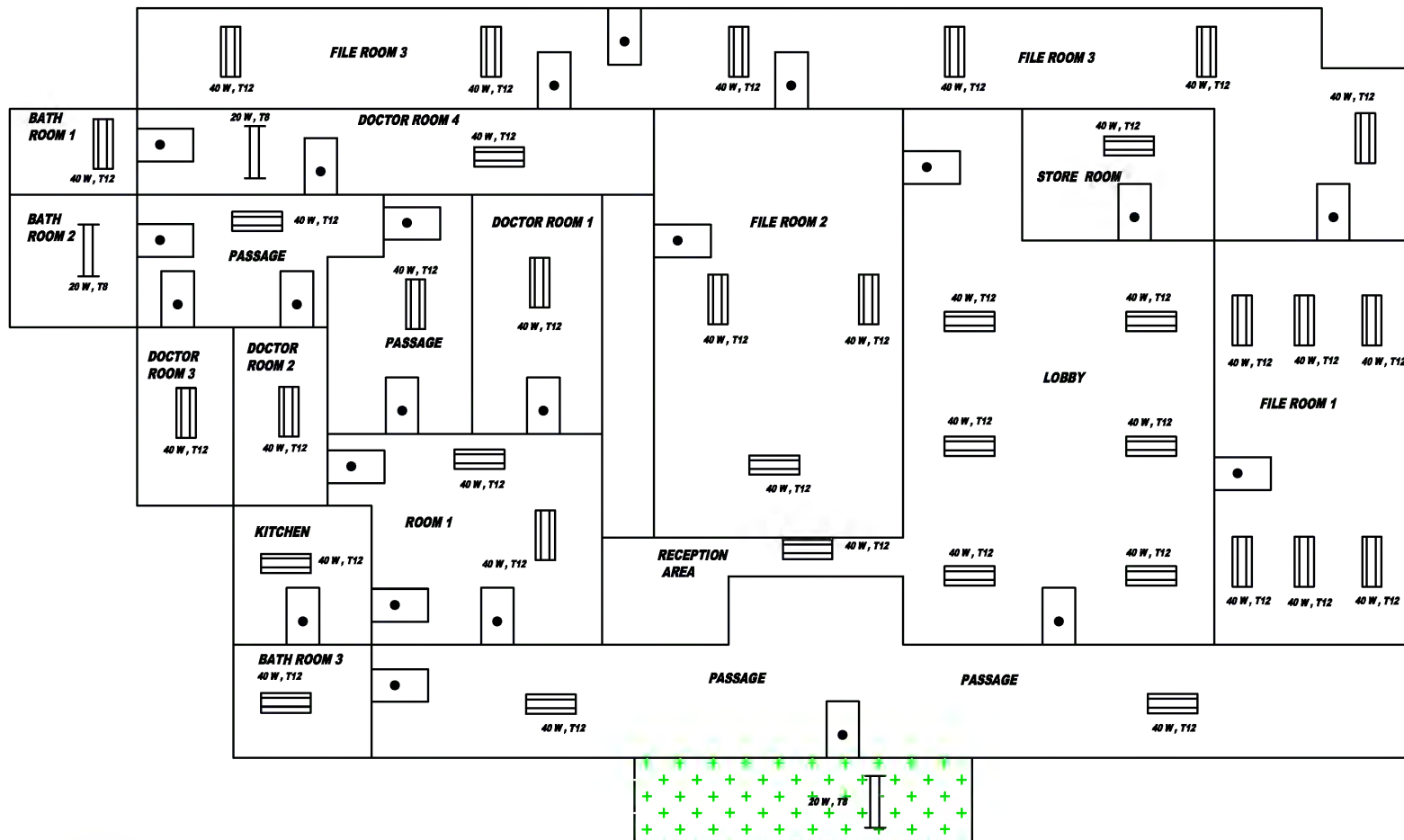
PowerGen Limited
 24 Derrymore Road, Kingston 10
 Kingston, Jamaica, West Indies
 Telephone: 876 754 2323
 Fax: 876 906 4963
 Email: info@powergen-jm.com
<http://www.powergen-jm.com>

LIGHTING LAYOUT - METER # 1350261

DIETARY - NUTRITION

INVESTMENT GRADE ENERGY AUDIT FOR SIX HOSPITALS
 [Project ID#: 00087974 (UNDP)]
 ENTITY: PETROLEUM CORPORATION OF JAMAICA
 ADDRESS: 36 TRAFALGAR ROAD
 KINGSTON 10, JAMAICA
 CONTACT: 876-929-5380

SOUTH EAST REGIONAL HEALTH AUTHORITY
 BELLEVUE HOSPITAL
 WINWARD ROAD,
 KINGSTON 2,
 Jamaica
 DRAWING NOT DONE TO SCALE



POWERGEN LTD.
Energy Solutions

PowerGen Limited
24 Derrymore Road, Kingston 10
Kingston, Jamaica, West Indies
Telephone: 876 754 2323
Fax: 876 906 4963
Email: info@powergen-jm.com
<http://www.powergen-jm.com>

LIGHTING LAYOUT - METER # 1350261

DAY CLINIC - MEDICAL RECORDS

INVESTMENT GRADE ENERGY AUDIT FOR SIX
HOSPITALS
(Project ID#: 00087974 (UNDP))

ENTITY: PETROLEUM CORPORATION OF
JAMAICA

ADDRESS: 36 TRAFALGAR ROAD
KINGSTON 10, JAMAICA

CONTACT: 876-929-5300

**SOUTH EAST REGIONAL HEALTH
AUTHORITY**

BELLEVUE HOSPITAL

**WINWARD ROAD,
KINGSTON 2,
Jamaica**

**DRAWING NOT DONE TO
SCALE**

KEY



CORRIDOR



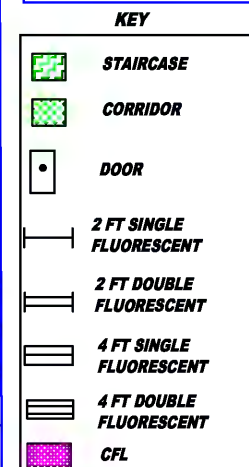
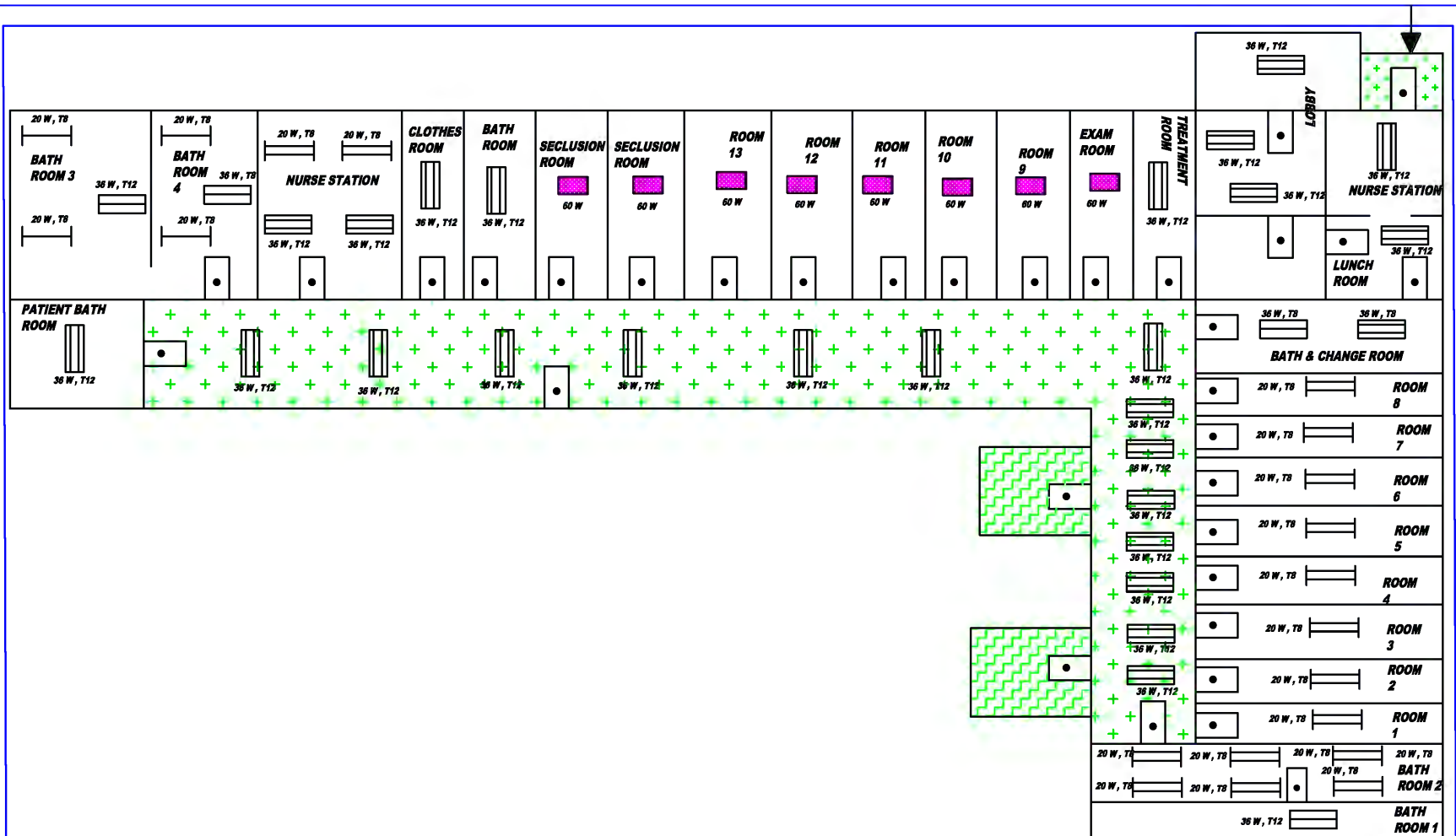
DOOR



**2 FT DOUBLE
FLUORESCENT**



**4 FT DOUBLE
FLUORESCENT**



POWERGEN LTD.
DEFINITION

PowerGen Limited
24 Derrymore Road, Kingston 10
Kingston, Jamaica, West Indies
Telephone: 876 754 2323
Fax: 876 906 4963
Email: info@powergen-jm.com
<http://www.powergen-jm.com>

LIGHTING LAYOUT - METER # 1350261

BOUGAINVILLEA

INVESTMENT GRADE ENERGY AUDIT FOR SIX
HOSPITALS
(Project ID#: 00087974 (UNDP))

ENTITY: PETROLEUM CORPORATION OF
JAMAICA

ADDRESS: 36 TRAFALGAR ROAD
KINGSTON 16, JAMAICA

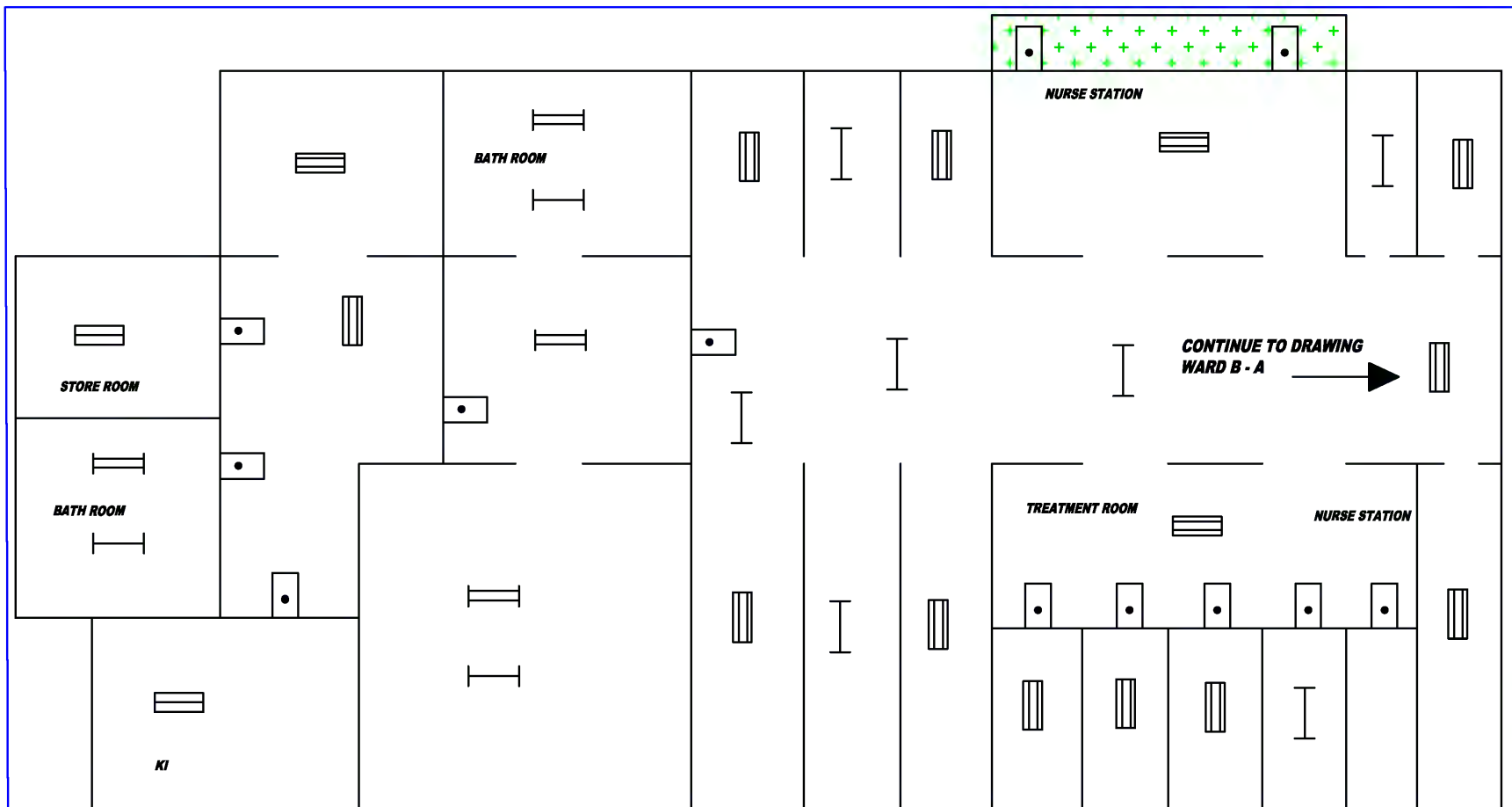
CONTACT: 876-929-5380

**SOUTH EAST REGIONAL HEALTH
AUTHORITY**

BELLEVUE HOSPITAL

**WINWARD ROAD,
KINGSTON 2,
Jamaica**

**DRAWING NOT DONE TO
SCALE**



KEY

	CORRIDOR
	DOOR
	2 FT SINGLE FLUORESCENT
	2 FT DOUBLE FLUORESCENT
	4 FT SINGLE FLUORESCENT
	4 FT DOUBLE FLUORESCENT



POWERGEN LTD.
Energy. Common sense. Progress.

PowerGen Limited
 24 Derrymore Road, Kingston 10
 Kingston, Jamaica, West Indies
 Telephone: 876 754 2323
 Fax: 876 906 4963
 Email: info@powergen-jm.com
<http://www.powergen-jm.com>

LIGHTING LAYOUT - METER # 1350261

WARD SUB ACCESS

INVESTMENT GRADE ENERGY AUDIT FOR SIX
 HOSPITALS
 (Project ID#: 00087974 (UNDP))

ENTITY: PETROLEUM CORPORATION OF
 JAMAICA

ADDRESS: 34 TRAFALGAR ROAD
 KINGSTON 18, JAMAICA

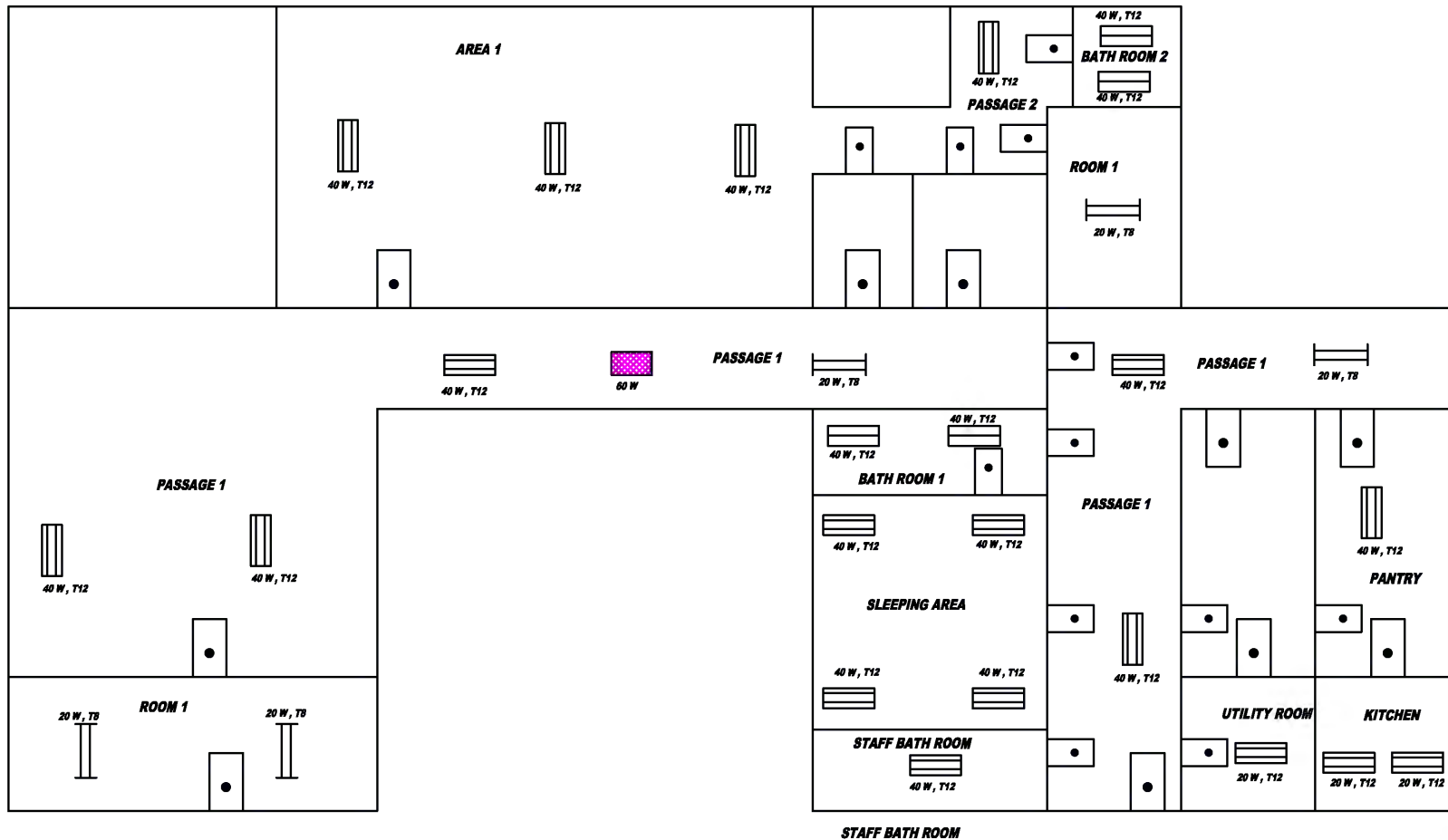
CONTACT: 876-929-5380

**SOUTH EAST REGIONAL HEALTH
 AUTHORITY**

BELLEVUE HOSPITAL

**WINWARD ROAD,
 KINGSTON 2,
 Jamaica**

**DRAWING NOT DONE TO
 SCALE**



PowerGen Limited
 24 Derrymore Road, Kingston 10
 Kingston, Jamaica, West Indies
 Telephone: 876 754 2323
 Fax: 876 906 4963
 Email: info@powergen-jm.com
<http://www.powergen-jm.com>

LIGHTING LAYOUT - METER # 1350261

WARD K / K COMPLEX

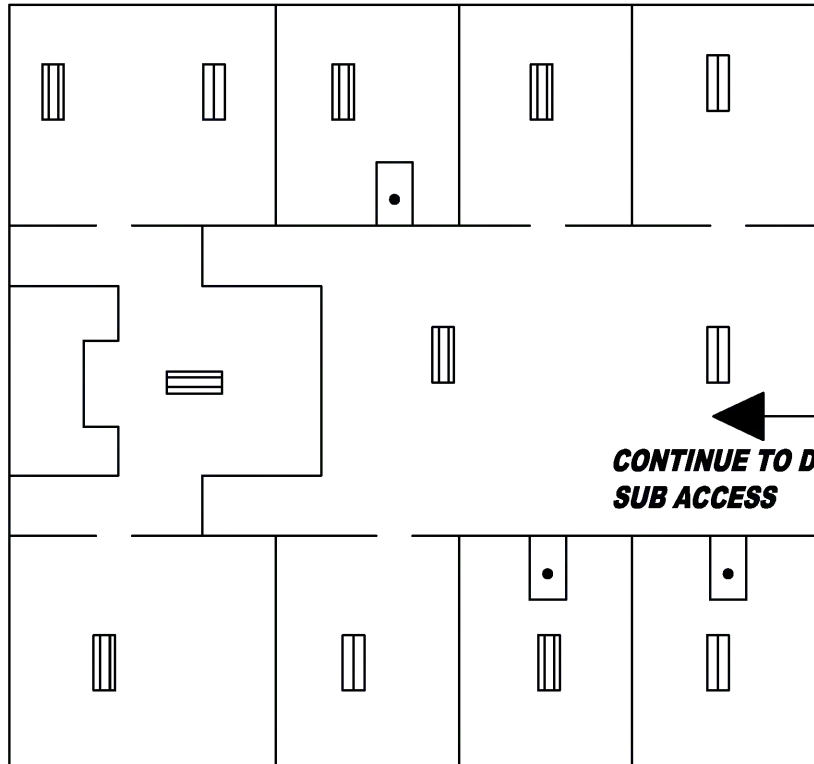
INVESTMENT GRADE ENERGY AUDIT FOR SIX
 HOSPITALS
 [Project ID#: 00087974 (UNDP)]
 ENTITY: PETROLEUM CORPORATION OF
 JAMAICA
 ADDRESS: 36 TRAFALGAR ROAD
 KINGSTON 18, JAMAICA
 CONTACT: 876-929-5380

**SOUTH EAST REGIONAL HEALTH
 AUTHORITY**
BELLEVUE HOSPITAL
 WINWARD ROAD,
 KINGSTON 2,
 Jamaica
**DRAWING NOT DONE TO
 SCALE**

KEY

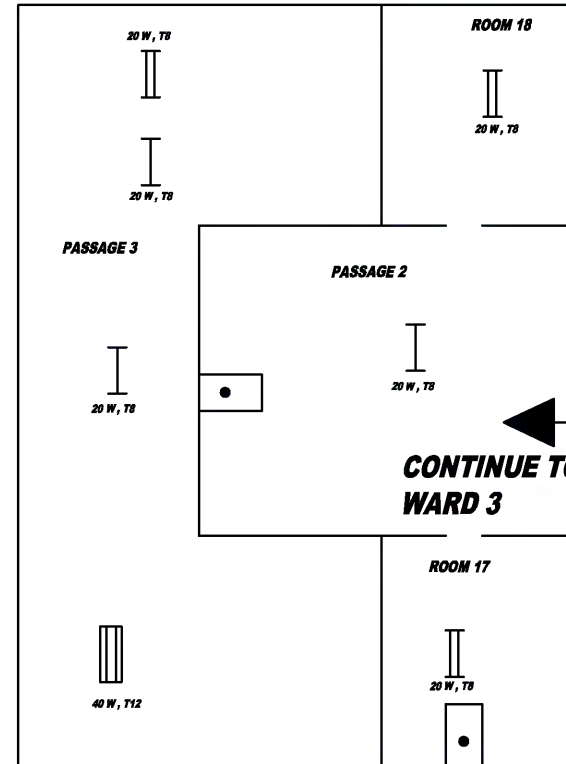
	CFL
	DOOR
	2 FT DOUBLE FLUORESCENT
	4 FT SINGLE FLUORESCENT
	4 FT DOUBLE FLUORESCENT

WARD 2 - A



**CONTINUE TO DRAWING
SUB ACCESS**

WARD 3 - A



**CONTINUE TO DRAWING
WARD 3**

KEY

	DOOR
	2 FT SINGLE FLUORESCENT
	2 FT DOUBLE FLUORESCENT
	4 FT SINGLE FLUORESCENT
	4 FT DOUBLE FLUORESCENT



POWERGEN LTD.
Energy, Commerce and Engineering

PowerGen Limited
24 Derrymore Road, Kingston 10
Kingston, Jamaica, West Indies
Telephone: 876 754 2323
Fax: 876 906 4963
Email: info@powergen-jm.com
<http://www.powergen-jm.com>

LIGHTING LAYOUT - METER # 1350261

WARD 2-A - 3-A

INVESTMENT GRADE ENERGY AUDIT FOR SIX
HOSPITALS
(Project ID#: 00087974 (UNDP))

ENTITY: PETROLEUM CORPORATION OF
JAMAICA

ADDRESS: 36 TRAFALGAR ROAD
KINGSTON 10, JAMAICA

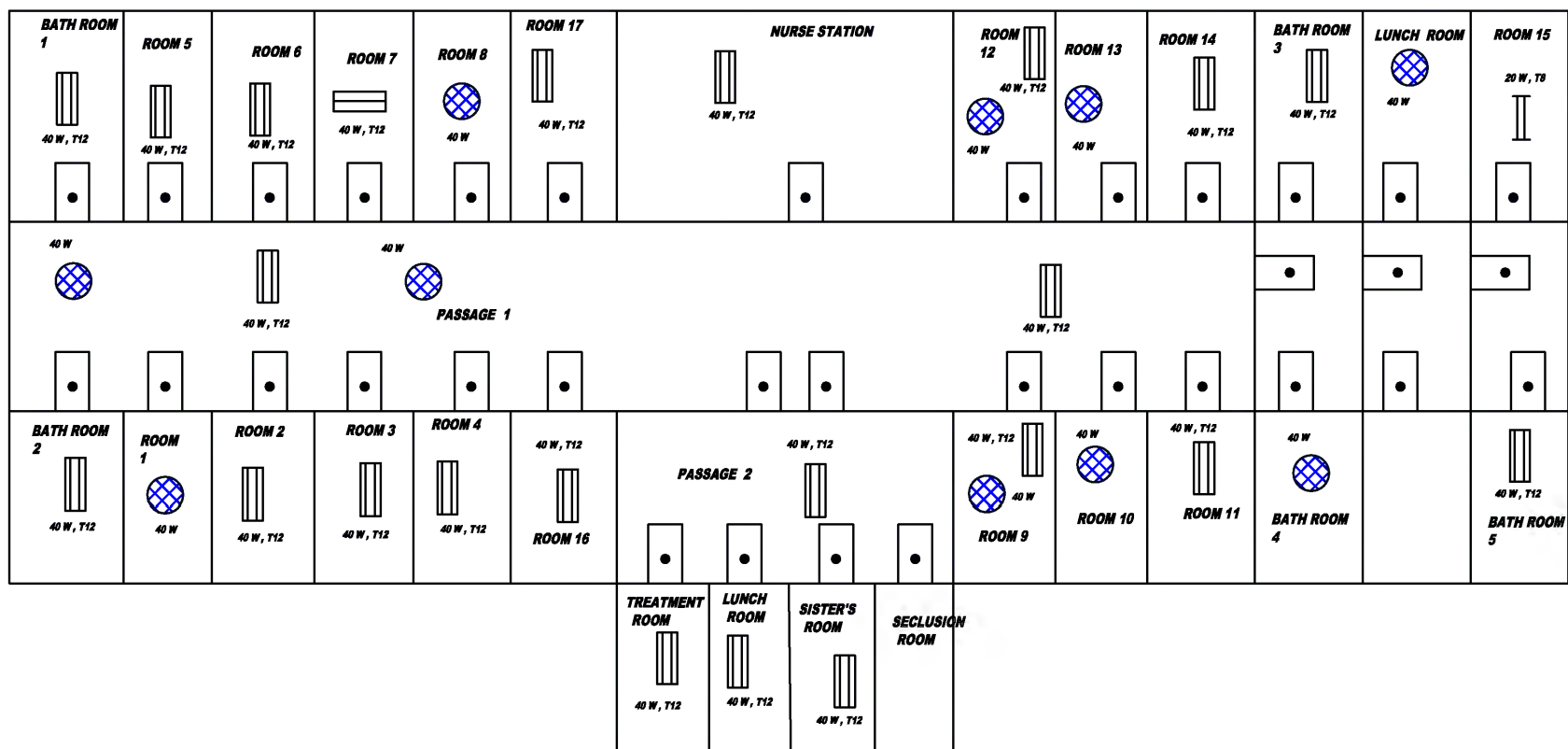
CONTACT: 876-925-5380

**SOUTH EAST REGIONAL HEALTH
AUTHORITY**

BELLEVUE HOSPITAL

**WINWARD ROAD,
KINGSTON 2,
Jamaica**

**DRAWING NOT DONE TO
SCALE**



KEY

	DOOR
	2 FT DOUBLE FLUORESCENT
	4 FT SINGLE FLUORESCENT
	4 FT DOUBLE FLUORESCENT
	INCANDESCENT



PowerGen Ltd.
Energy. Commerce. Environment.

PowerGen Limited
24 Derrymore Road, Kingston 10
Kingston, Jamaica, West Indies
Telephone: 876 754 2323
Fax: 876 906 4963
Email: info@powergen-jm.com
<http://www.powergen-jm.com>

LIGHTING LAYOUT - METER # 1350261

WARD 6

INVESTMENT GRADE ENERGY AUDIT FOR SIX HOSPITALS

[Project ID#: 00087974 (UNDP)]

ENTITY: PETROLEUM CORPORATION OF JAMAICA

ADDRESS: 36 TRAFALGAR ROAD
KINGSTON 10, JAMAICA

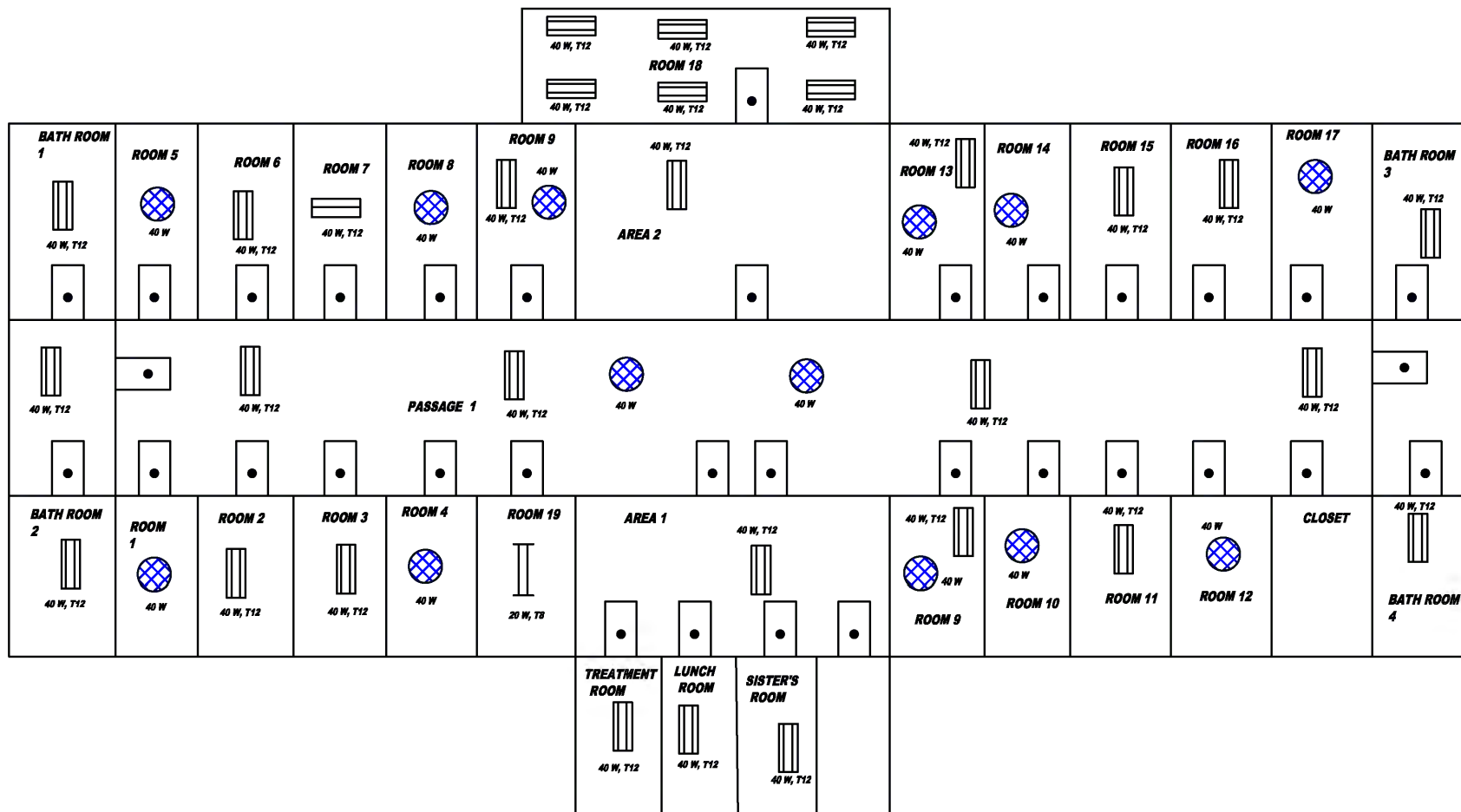
CONTACT: 876-929-5380

SOUTH EAST REGIONAL HEALTH AUTHORITY

BELLEVUE HOSPITAL

**WINWARD ROAD,
KINGSTON 2,
Jamaica**

**DRAWING NOT DONE TO
SCALE**



PowerGen Ltd.
Energy. Comfort. and Environment.

PowerGen Limited
 24 Derrymore Road, Kingston 10
 Kingston, Jamaica, West Indies
 Telephone: 876 754 2323
 Fax: 876 906 4963
 Email: info@powergen-jm.com
<http://www.powergen-jm.com>

LIGHTING LAYOUT - METER # 1350261

WARD 5

INVESTMENT GRADE ENERGY AUDIT FOR SIX
 HOSPITALS
 [Project ID#: 00087974 (UNDP)]

ENTITY: PETROLEUM CORPORATION OF
 JAMAICA

ADDRESS: 36 TRAFALGAR ROAD
 KINGSTON 18, JAMAICA

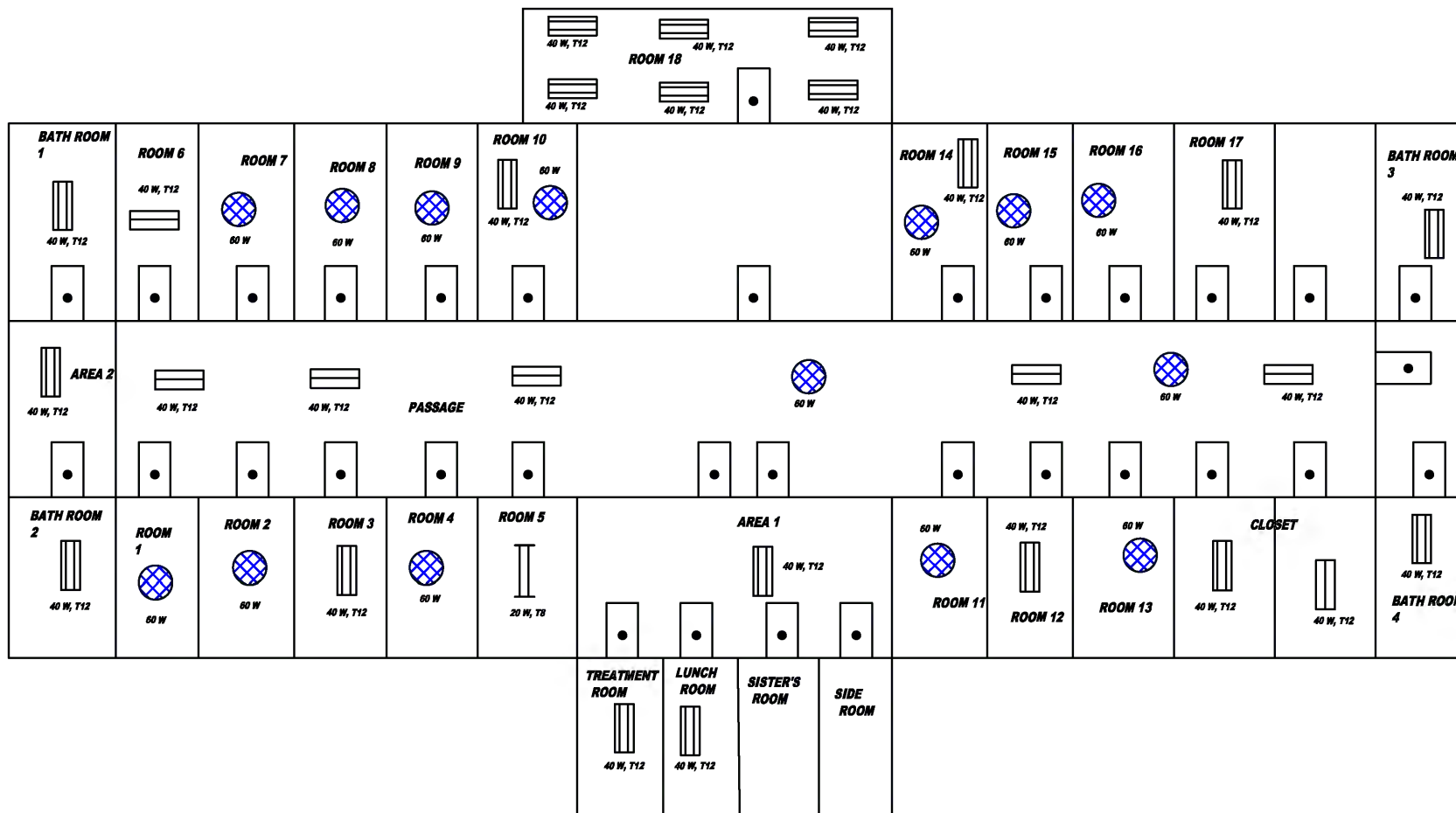
CONTACT: 876-929-5380

SOUTH EAST REGIONAL HEALTH
 AUTHORITY

BELLEVUE HOSPITAL

WINWARD ROAD,
 KINGSTON 2,
 Jamaica

DRAWING NOT DONE TO
 SCALE



KEY

	CORRIDOR
	DOOR
	2 FT DOUBLE FLUORESCENT
	4 FT SINGLE FLUORESCENT
	4 FT DOUBLE FLUORESCENT
	INCANDESCENT



PowerGen LTD.
Invest. Commission and Engineering

PowerGen Limited
24 Derrymore Road, Kingston 10
Kingston, Jamaica, West Indies
Telephone: 876 754 2323
Fax: 876 906 4963
Email: info@powergen-jm.com
<http://www.powergen-jm.com>

LIGHTING LAYOUT - METER # 1350261

WARD 4 / UPPER G

INVESTMENT GRADE ENERGY AUDIT FOR SIX
HOSPITALS
[Project ID#: 00087974 (UNDP)]

ENTITY: PETROLEUM CORPORATION OF
JAMAICA

ADDRESS: 36 TRAFALGAR ROAD
KINGSTON 10, JAMAICA

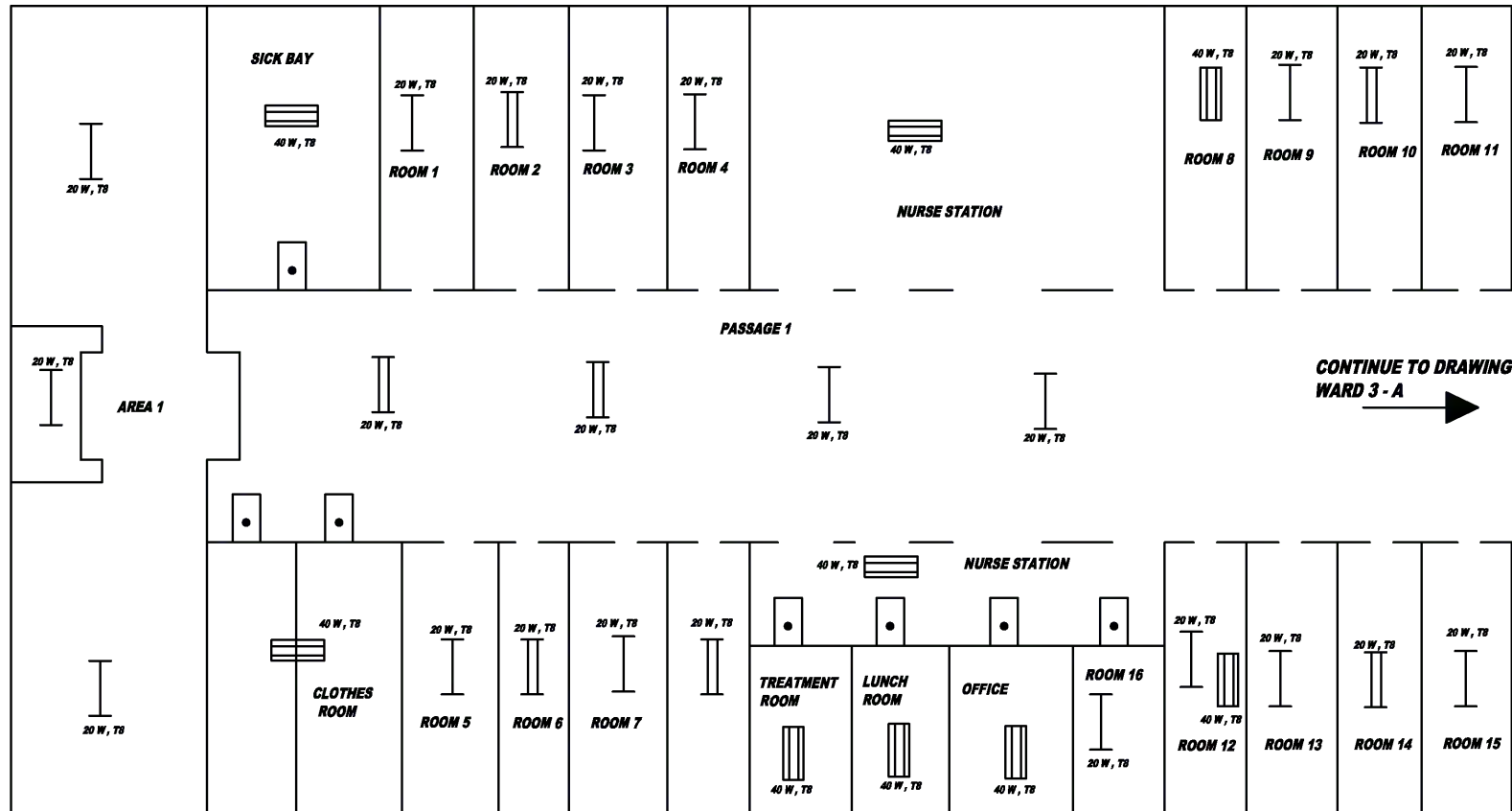
CONTACT: 876-929-5380

**SOUTH EAST REGIONAL HEALTH
AUTHORITY**

BELLEVUE HOSPITAL

**WINWARD ROAD,
KINGSTON 2,
Jamaica**

**DRAWING NOT DONE TO
SCALE**



KEY

	DOOR
	2 FT SINGLE FLUORESCENT
	2 FT DOUBLE FLUORESCENT
	4 FT SINGLE FLUORESCENT
	4 FT DOUBLE FLUORESCENT



POWERGEN LTD.
Energy, Commerce and Engineering

PowerGen Limited
24 Derrymore Road, Kingston 10
Kingston, Jamaica, West Indies
Telephone: 876 754 2323
Fax: 876 906 4963
Email: info@powergen-jm.com
<http://www.powergen-jm.com>

LIGHTING LAYOUT - METER # 1350261

WARD 3

INVESTMENT GRADE ENERGY AUDIT FOR SIX HOSPITALS
(Project ID#: 00087974) (UNDP)

ENTITY: PETROLEUM CORPORATION OF JAMAICA

ADDRESS: 36 TRAFALGAR ROAD
KINGSTON 10, JAMAICA

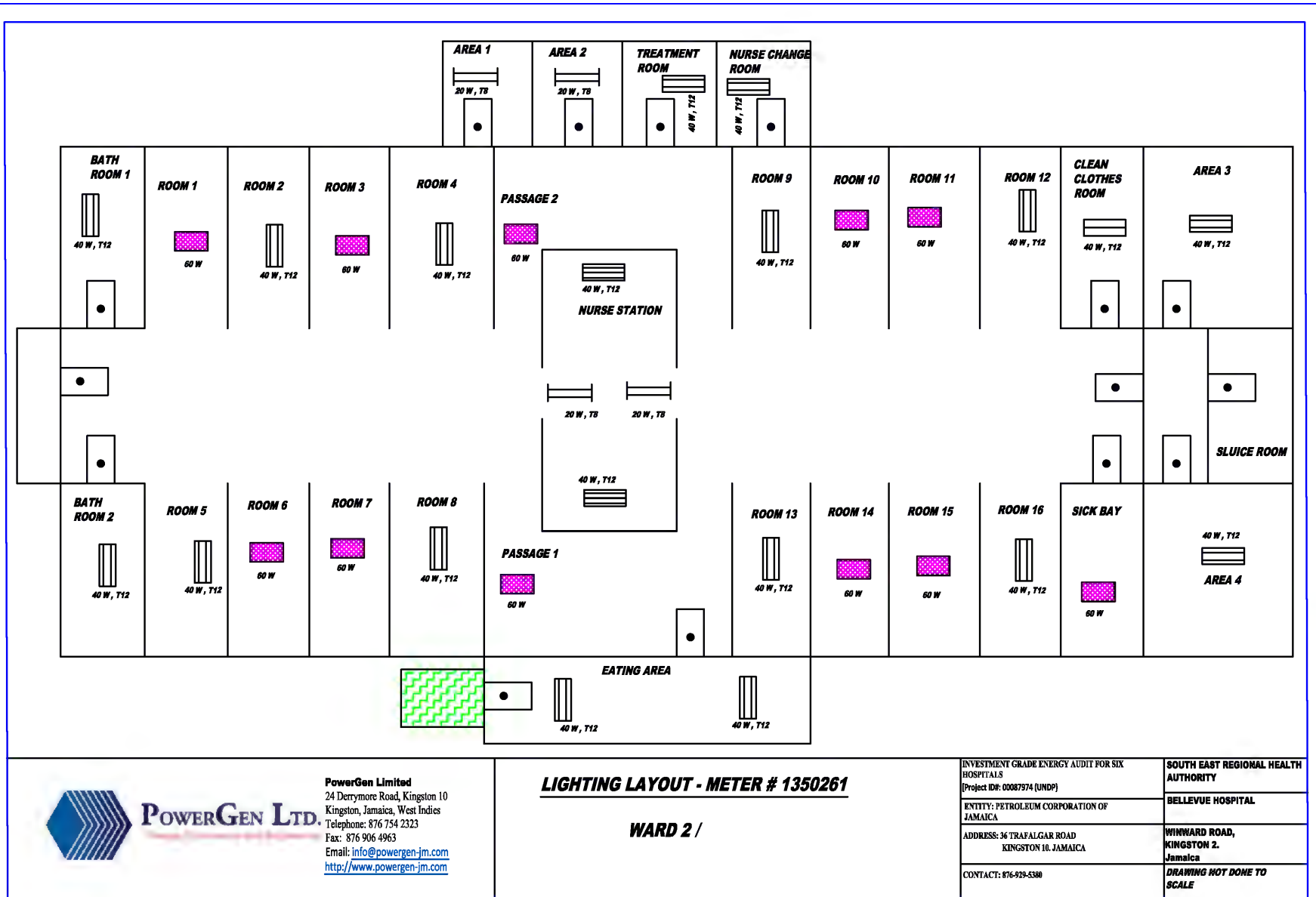
CONTACT: 876-929-5380

SOUTH EAST REGIONAL HEALTH AUTHORITY

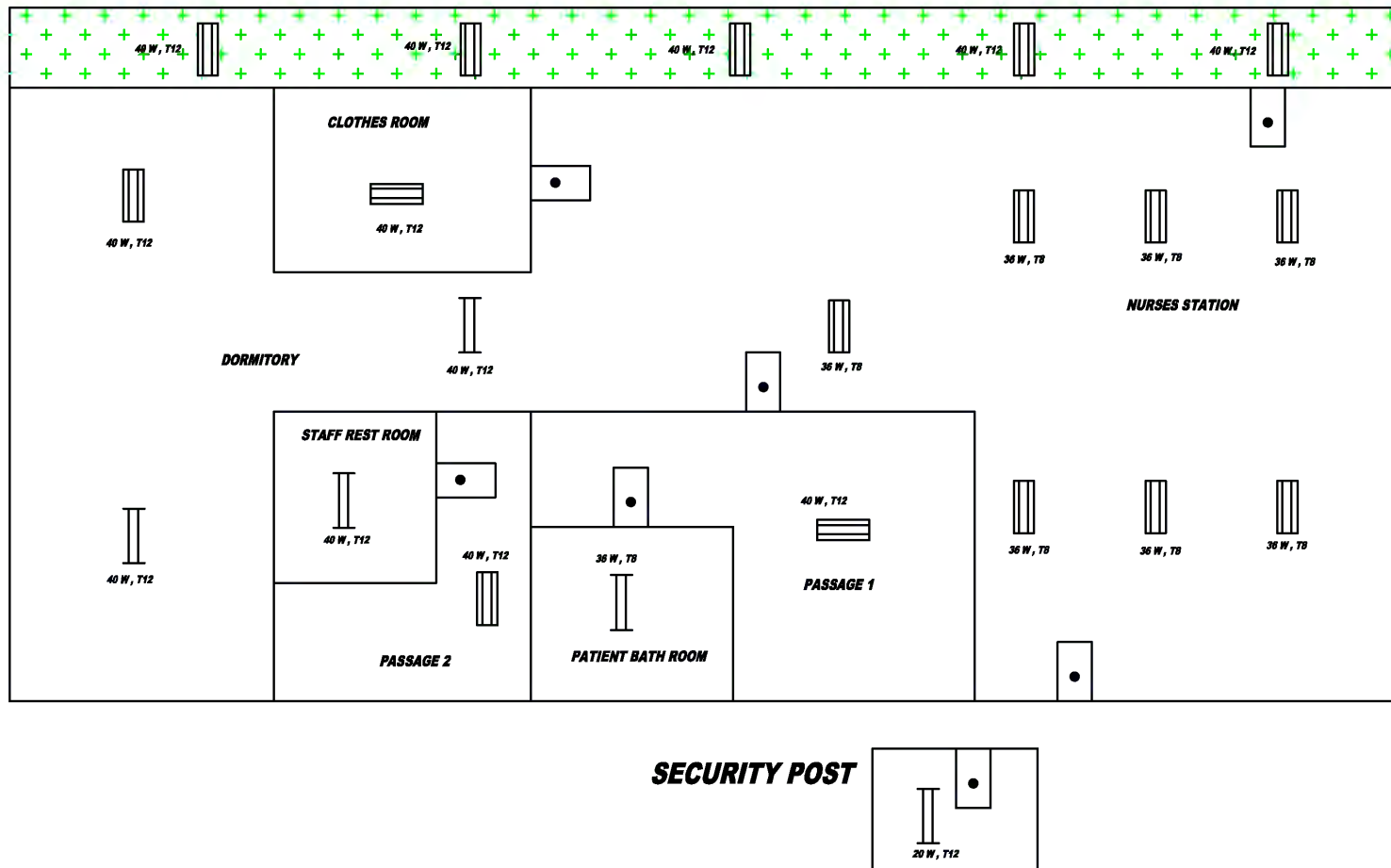
BELLEVUE HOSPITAL

**WINWARD ROAD,
KINGSTON 2,
Jamaica**

DRAWING NOT DONE TO SCALE



KEY	
	STAIRCASE
	DOOR
	2 FT DOUBLE FLUORESCENT
	4 FT SINGLE FLUORESCENT
	4 FT DOUBLE FLUORESCENT
	4 FT TRIPPL FLUORESCENT
	CFL



POWERGEN LTD.

PowerGen Limited
24 Derrymore Road, Kingston 10
Kingston, Jamaica, West Indies
Telephone: 876 754 2323
Fax: 876 906 4963
Email: info@powergen-jm.com
<http://www.powergen-jm.com>

LIGHTING LAYOUT - METER # 1350261

VILLA 2 WARD

INVESTMENT GRADE ENERGY AUDIT FOR SIX
HOSPITALS
(Project ID#: 00087974 (UNDP))

ENTITY: PETROLEUM CORPORATION OF
JAMAICA

ADDRESS: 36 TRAFALGAR ROAD
KINGSTON 10, JAMAICA

CONTACT: 876-929-5380

**SOUTH EAST REGIONAL HEALTH
AUTHORITY**

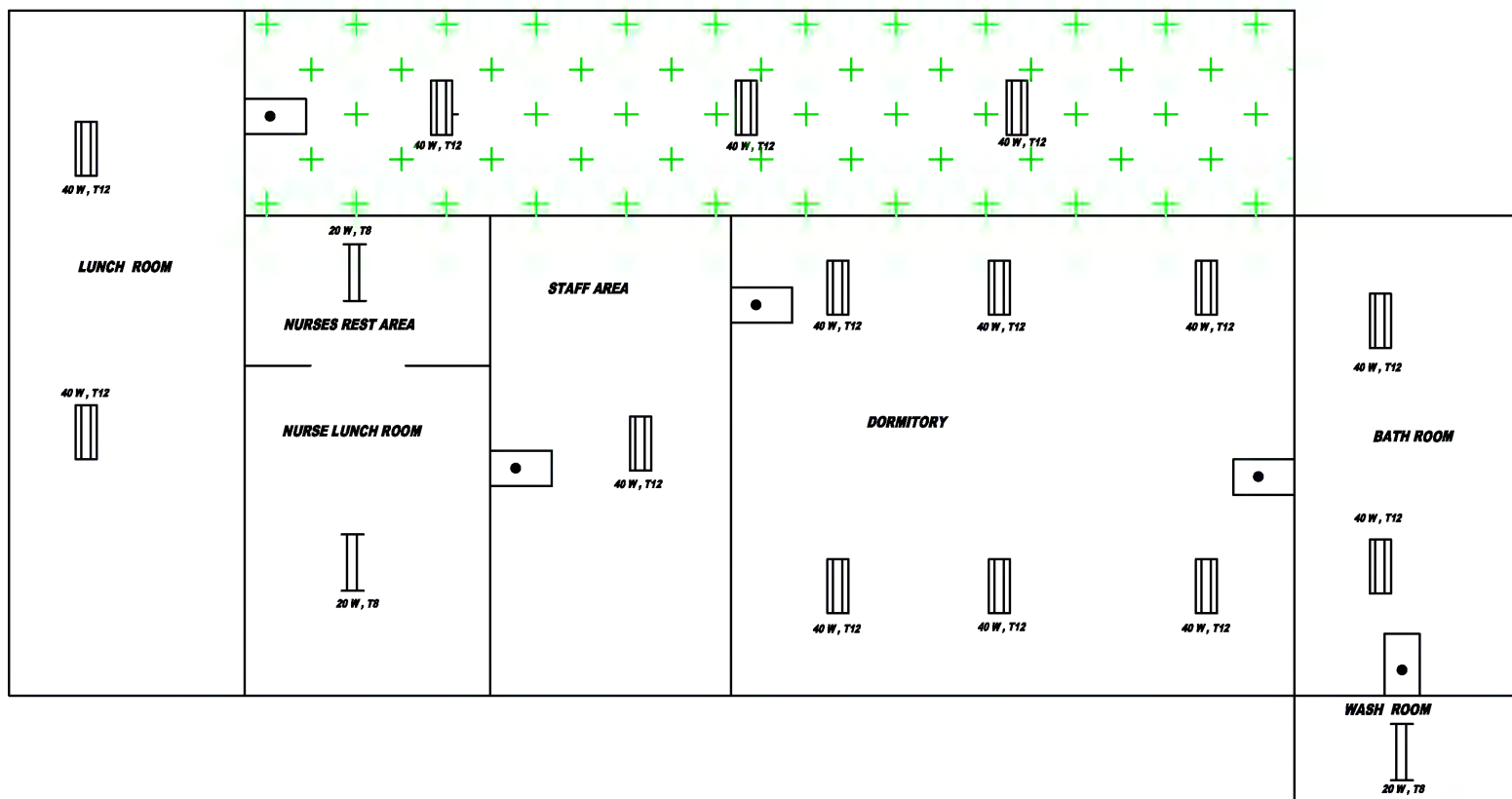
BELLEVUE HOSPITAL

**WINWARD ROAD,
KINGSTON 2,
Jamaica**

**DRAWING NOT DONE TO
SCALE**

KEY

	CORRIDOR
	DOOR
	2 FT DOUBLE FLUORESCENT
	4 FT DOUBLE FLUORESCENT



POWERGEN LTD.

PowerGen Limited
 24 Derrymore Road, Kingston 10
 Kingston, Jamaica, West Indies
 Telephone: 876 754 2323
 Fax: 876 906 4963
 Email: info@powergen-jm.com
<http://www.powergen-jm.com>

LIGHTING LAYOUT - METER # 1350261

VILLA 1 WARD

INVESTMENT GRADE ENERGY AUDIT FOR SIX
 HOSPITALS
 [Project ID#: 00087974 (UNDP)]

ENTITY: PETROLEUM CORPORATION OF
 JAMAICA

ADDRESS: 36 TRAFALGAR ROAD
 KINGSTON 10, JAMAICA

CONTACT: 876-929-5380

**SOUTH EAST REGIONAL HEALTH
 AUTHORITY**

BELLEVUE HOSPITAL

**WINWARD ROAD,
 KINGSTON 2,
 Jamaica**

**DRAWING NOT DONE TO
 SCALE**

KEY



CORRIDOR



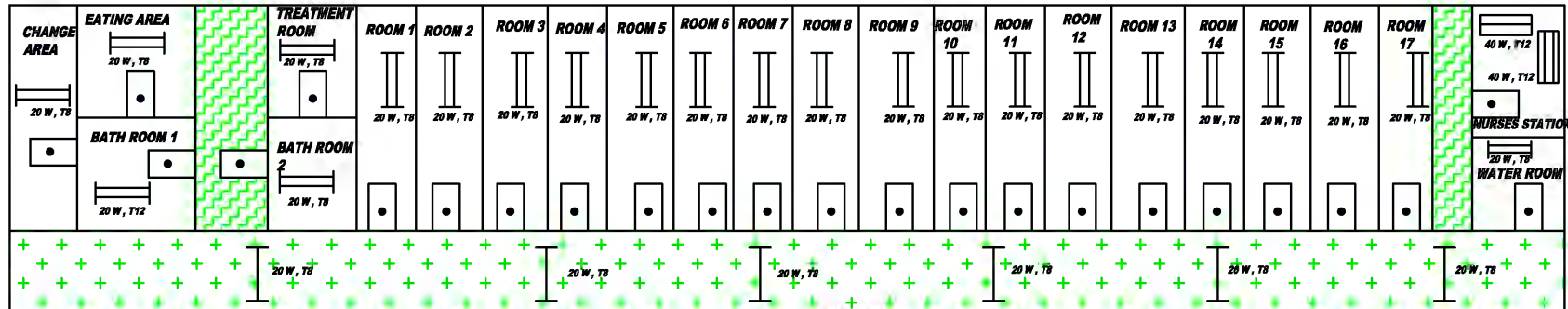
DOOR



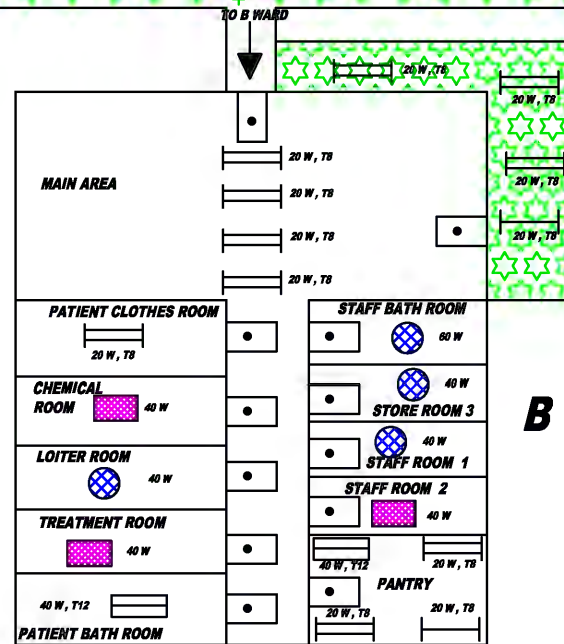
**2 FT DOUBLE
 FLUORESCENT**



**4 FT DOUBLE
 FLUORESCENT**



UPPER C - FIRST FLOOR



B WARD - FIRST FLOOR

KEY

	STAIRCASE
	CORRIDOR
	VERANDA
	DOOR
	2 FT SINGLE FLUORESCENT
	2 FT DOUBLE FLUORESCENT
	4 FT SINGLE FLUORESCENT
	4 FT DOUBLE FLUORESCENT
	CFL
	INCANDESCENT



PowerGen Ltd.

PowerGen Limited
24 Derrymore Road, Kingston 10
Kingston, Jamaica, West Indies
Telephone: 876 754 2323
Fax: 876 906 4963
Email: info@powergen-jm.com
<http://www.powergen-jm.com>

LIGHTING LAYOUT - METER # 1350261

UPPER C - B WARD

INVESTMENT GRADE ENERGY AUDIT FOR SIX
HOSPITALS
[Project ID#: 00087974 (UNDP)]

ENTITY: PETROLEUM CORPORATION OF
JAMAICA

ADDRESS: 36 TRAFALGAR ROAD
KINGSTON 10, JAMAICA

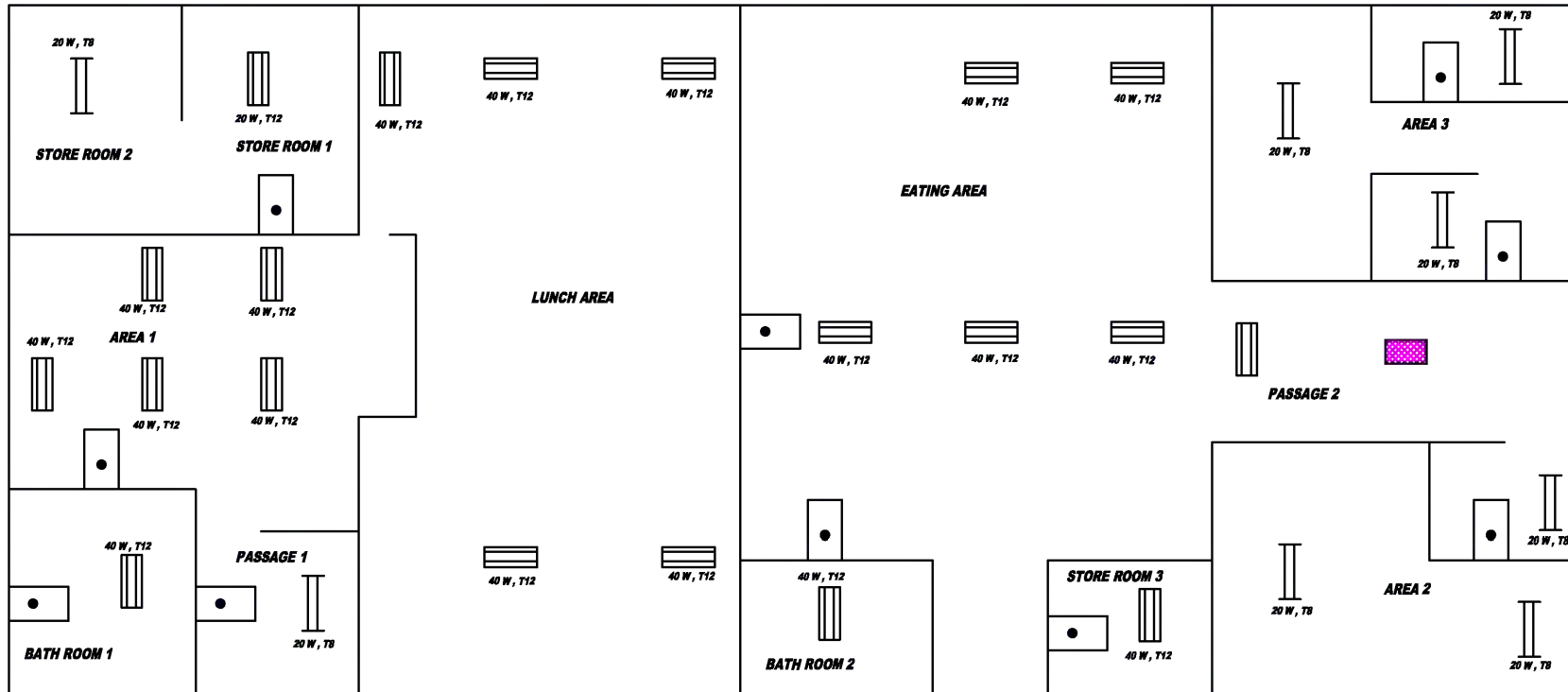
CONTACT: 876-929-5380

SOUTH EAST REGIONAL HEALTH
AUTHORITY

BELLEVUE HOSPITAL

WINWARD ROAD,
KINGSTON 2,
Jamaica

DRAWING NOT DONE TO
SCALE



PowerGen Ltd.
Energy, Commercial Engineering

PowerGen Limited
24 Derrymore Road, Kingston 10
Kingston, Jamaica, West Indies
Telephone: 876 754 2323
Fax: 876 906 4963
Email: info@powergen-jm.com
<http://www.powergen-jm.com>

LIGHTING LAYOUT - METER # 1350261

STAFF CAFETERIA

INVESTMENT GRADE ENERGY AUDIT FOR SIX
HOSPITALS

[Project ID# 00087974 (UNDP)]

ENTITY: PETROLEUM CORPORATION OF
JAMAICA

ADDRESS: 36 TRAFALGAR ROAD
KINGSTON 10, JAMAICA

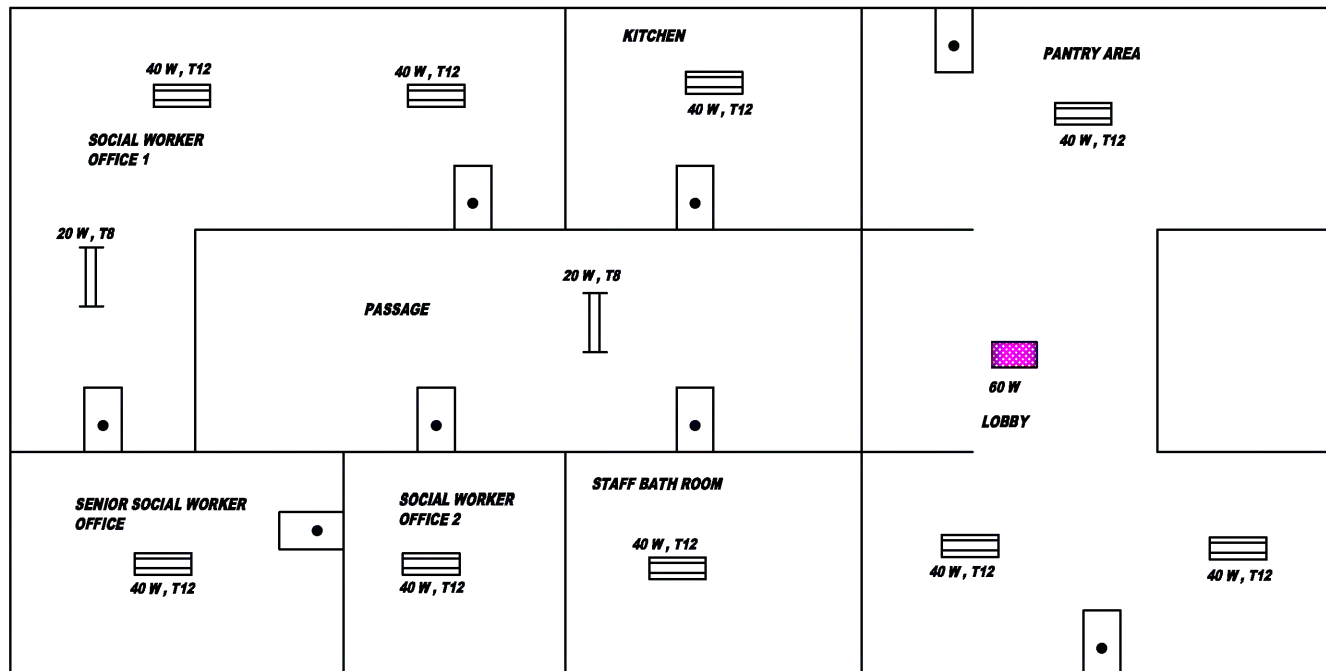
CONTACT: 876-929-5380

**SOUTH EAST REGIONAL HEALTH
AUTHORITY**



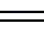
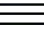

BELLEVUE HOSPITAL

**WINWARD ROAD,
KINGSTON 2,
Jamaica**

**DRAWING NOT DONE TO
SCALE**



KEY

	CFL
	DOOR
	2 FT DOUBLE FLUORESCENT
	4 FT SINGLE FLUORESCENT
	4 FT DOUBLE FLUORESCENT



PowerGen Limited
24 Derrymore Road, Kingston 10
Kingston, Jamaica, West Indies
Telephone: 876 754 2323
Fax: 876 906 4963
Email: info@powergen-jm.com
<http://www.powergen-jm.com>

LIGHTING LAYOUT - METER # 1350261

SOCIAL WORKS

INVESTMENT GRADE ENERGY AUDIT FOR SIX HOSPITALS (Project ID: 00087974 (UNDP))	SOUTH EAST REGIONAL HEALTH AUTHORITY
ENTITY: PETROLEUM CORPORATION OF JAMAICA	BELLEVUE HOSPITAL
ADDRESS: 36 TRAFALGAR ROAD KINGSTON 10, JAMAICA	WINWARD ROAD, KINGSTON 2, Jamaica
CONTACT: 876-929-5380	DRAWING NOT DONE TO SCALE



KEY

	125W SPOT LIGHT SINGLE HEAD
	175W SODIUM VAPOR
	250W HIGH PRESSURE SODIUM VAPOR
	SOLAR POLE MOUNTED LIGHT



PowerGen LTD.
Energy, Commerce and Engineering

PowerGen Limited
24 Derrymore Road, Kingston 10
Kingston, Jamaica, West Indies
Telephone: 876 754 2323
Fax: 876 906 4963
Email: info@powergen-jm.com
<http://www.powergen-jm.com>

LIGHTING LAYOUT - METER # 1350261

SITE LAYOUT

INVESTMENT GRADE ENERGY AUDIT FOR SIX
HOSPITALS
(Project ID#: 00087974 (UNDP))

ENTITY: PETROLEUM CORPORATION OF
JAMAICA

ADDRESS: 36 TRAFALGAR ROAD
KINGSTON 10, JAMAICA

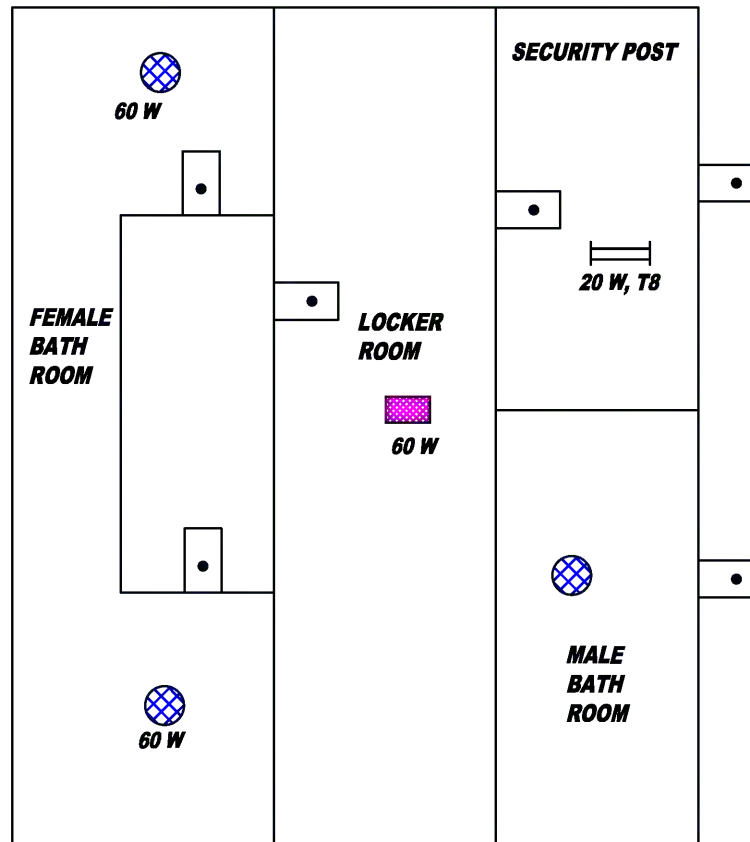
CONTACT: 876-929-5380

**SOUTH EAST REGIONAL HEALTH
AUTHORITY**

BELLEVUE HOSPITAL

**WINWARD ROAD,
KINGSTON 2,
Jamaica**

**DRAWING NOT DONE TO
SCALE**



LIGHTING LAYOUT - METER # 1350261

SECURITY HOUSE

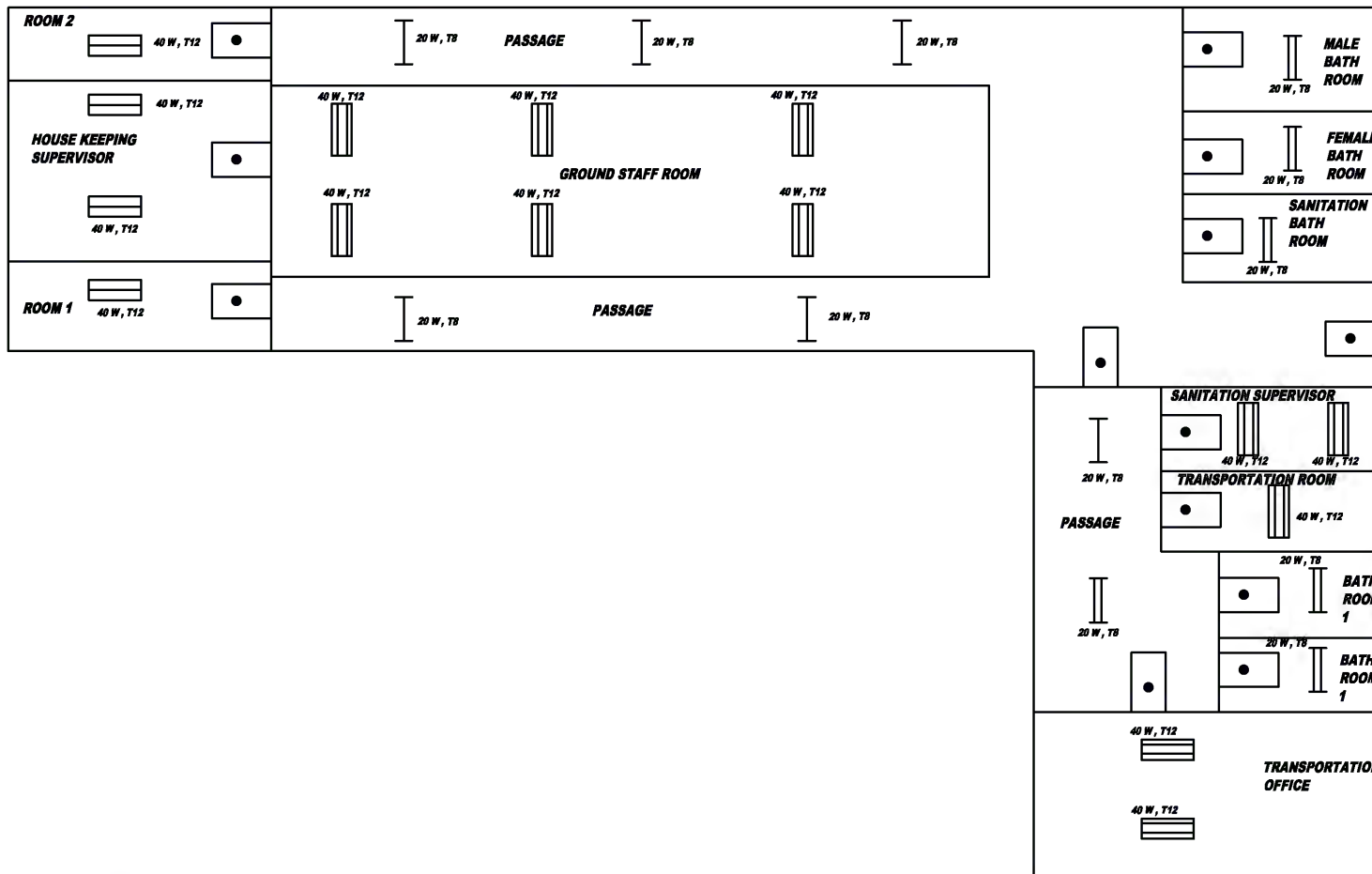


PowerGen Limited
 24 Derrymore Road, Kingston 10
 Kingston, Jamaica, West Indies
 Telephone: 876 754 2323
 Fax: 876 906 4963
 Email: info@powergen-jm.com
<http://www.powergen-jm.com>

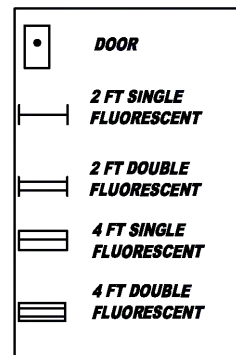
INVESTMENT GRADE ENERGY AUDIT FOR SIX HOSPITALS [Project ID: 00087974 (UNDP)]	SOUTH EAST REGIONAL HEALTH AUTHORITY
ENTITY: PETROLEUM CORPORATION OF JAMAICA	BELLEVUE HOSPITAL
ADDRESS: 36 TRAFALGAR ROAD KINGSTON 10, JAMAICA	WINWARD ROAD, KINGSTON 2, Jamaica
CONTACT: 876-929-5380	DRAWING NOT DONE TO SCALE

KEY

	CFL
	DOOR
	2 FT DOUBLE FLUORESCENT
	INCANDESCENT



KEY



PowerGen Ltd.
 Energy's commercial solutions

PowerGen Limited
 24 Derrymore Road, Kingston 10
 Kingston, Jamaica, West Indies
 Telephone: 876 754 2323
 Fax: 876 906 4963
 Email: info@powergen-jm.com
<http://www.powergen-jm.com>

LIGHTING LAYOUT - METER # 1350261

SANITATION BUILDING

INVESTMENT GRADE ENERGY AUDIT FOR SIX HOSPITALS

[Project ID#: 00087974 (UNDP)]

ENTITY: PETROLEUM CORPORATION OF JAMAICA

ADDRESS: 36 TRAFALGAR ROAD
 KINGSTON 10, JAMAICA

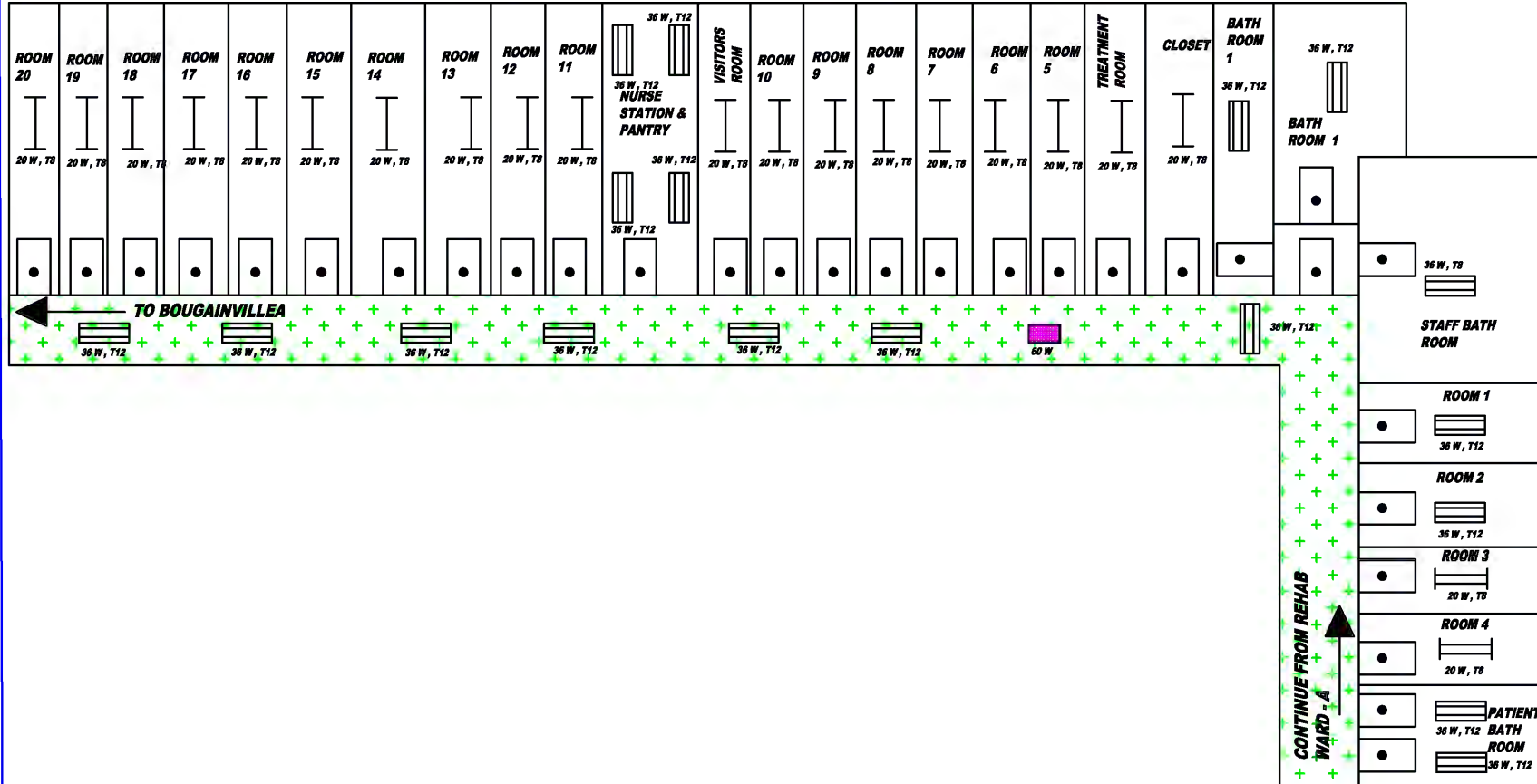
CONTACT: 876-929-5380

SOUTH EAST REGIONAL HEALTH AUTHORITY

BELLEVUE HOSPITAL

**WINWARD ROAD,
 KINGSTON 2,
 Jamaica**

DRAWING NOT DONE TO SCALE



POWERGEN LTD.

PowerGen Limited
24 Derrymore Road, Kingston 10
Kingston, Jamaica, West Indies
Telephone: 876 754 2323
Fax: 876 906 4963
Email: info@powergen-jm.com
<http://www.powergen-jm.com>

LIGHTING LAYOUT - METER # 1350261

ROCK WARD

INVESTMENT GRADE ENERGY AUDIT FOR SIX
HOSPITALS
[Project ID#: 00087974 (UNDP)]

ENTITY: PETROLEUM CORPORATION OF
JAMAICA

ADDRESS: 36 TRAFALGAR ROAD
KINGSTON 10, JAMAICA

CONTACT: 876-929-5380

**SOUTH EAST REGIONAL HEALTH
AUTHORITY**

BELLEVUE HOSPITAL

**WINWARD ROAD,
KINGSTON 2,
Jamaica**

**DRAWING NOT DONE TO
SCALE**

KEY

	CORRIDOR
	DOOR
	2 FT SINGLE FLUORESCENT
	2 FT DOUBLE FLUORESCENT
	4 FT DOUBLE FLUORESCENT
	CFL



KEY	
	STAIRCASE
	CORRIDOR
	DOOR
	2 FT SINGLE FLUORESCENT
	2 FT DOUBLE FLUORESCENT
	4 FT SINGLE FLUORESCENT
	4 FT DOUBLE FLUORESCENT
	CFL



PowerGen LTD.

PowerGen Limited
24 Derrymore Road, Kingston 10
Kingston, Jamaica, West Indies
Telephone: 876 754 2323
Fax: 876 906 4963
Email: info@powergen-jm.com
<http://www.powergen-jm.com>

LIGHTING LAYOUT - METER # 1350261

REHAB WARD - A

INVESTMENT GRADE ENERGY AUDIT FOR SIX
HOSPITALS
(Project ID#: 00087974 (UNDP))

ENTITY: PETROLEUM CORPORATION OF
JAMAICA

ADDRESS: 36 TRAFALGAR ROAD
KINGSTON 10, JAMAICA

CONTACT: 876-929-5380

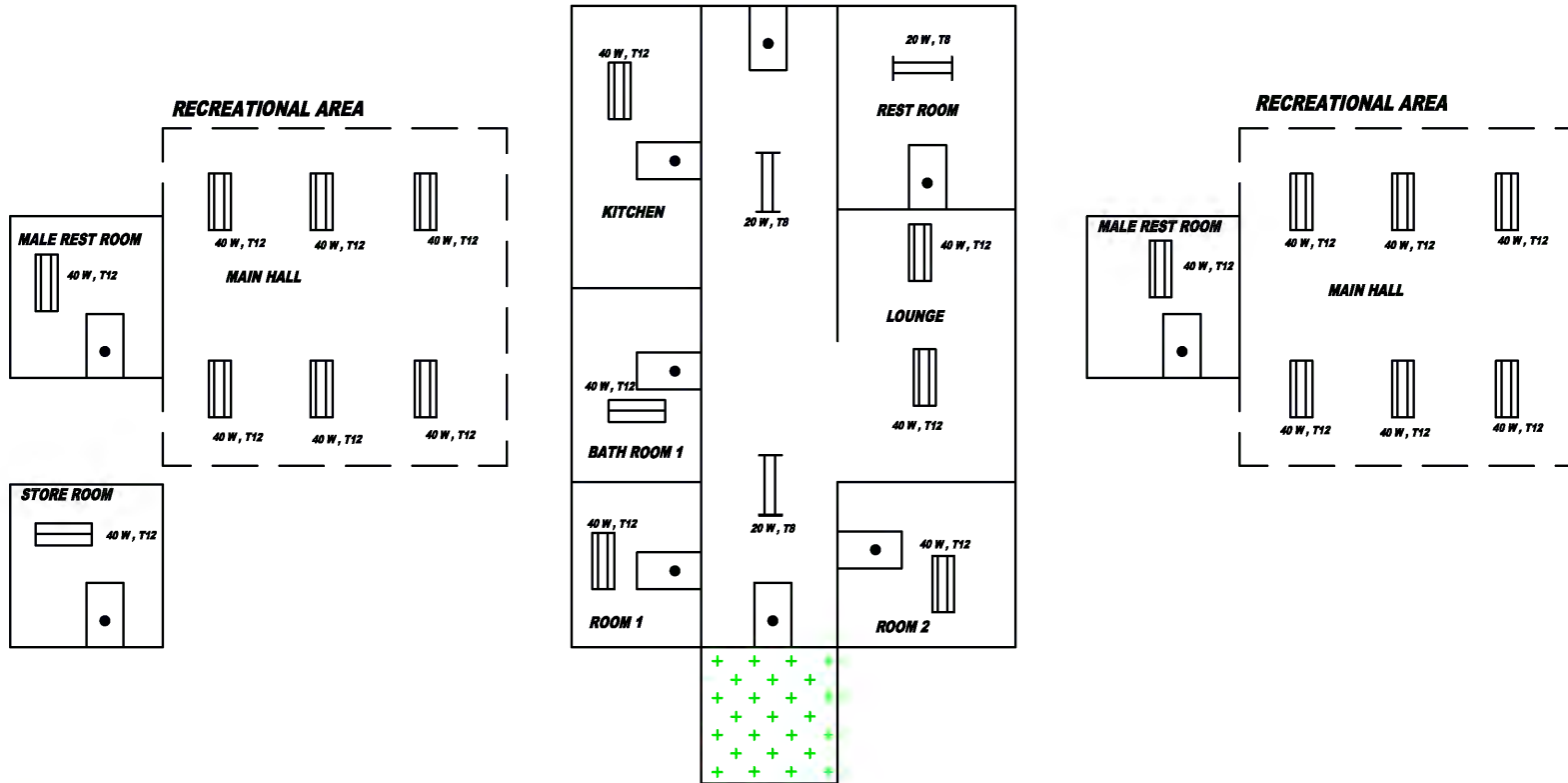
SOUTH EAST REGIONAL HEALTH
AUTHORITY

BELLEVUE HOSPITAL

WINWARD ROAD,
KINGSTON 2,
Jamaica

DRAWING NOT DONE TO
SCALE

DOCTOR LOUNGE



LIGHTING LAYOUT - METER # 1350261

RECREATIONAL AREA - DOCTOR LOUNGE

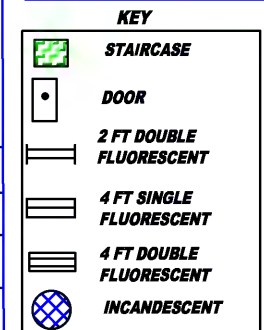
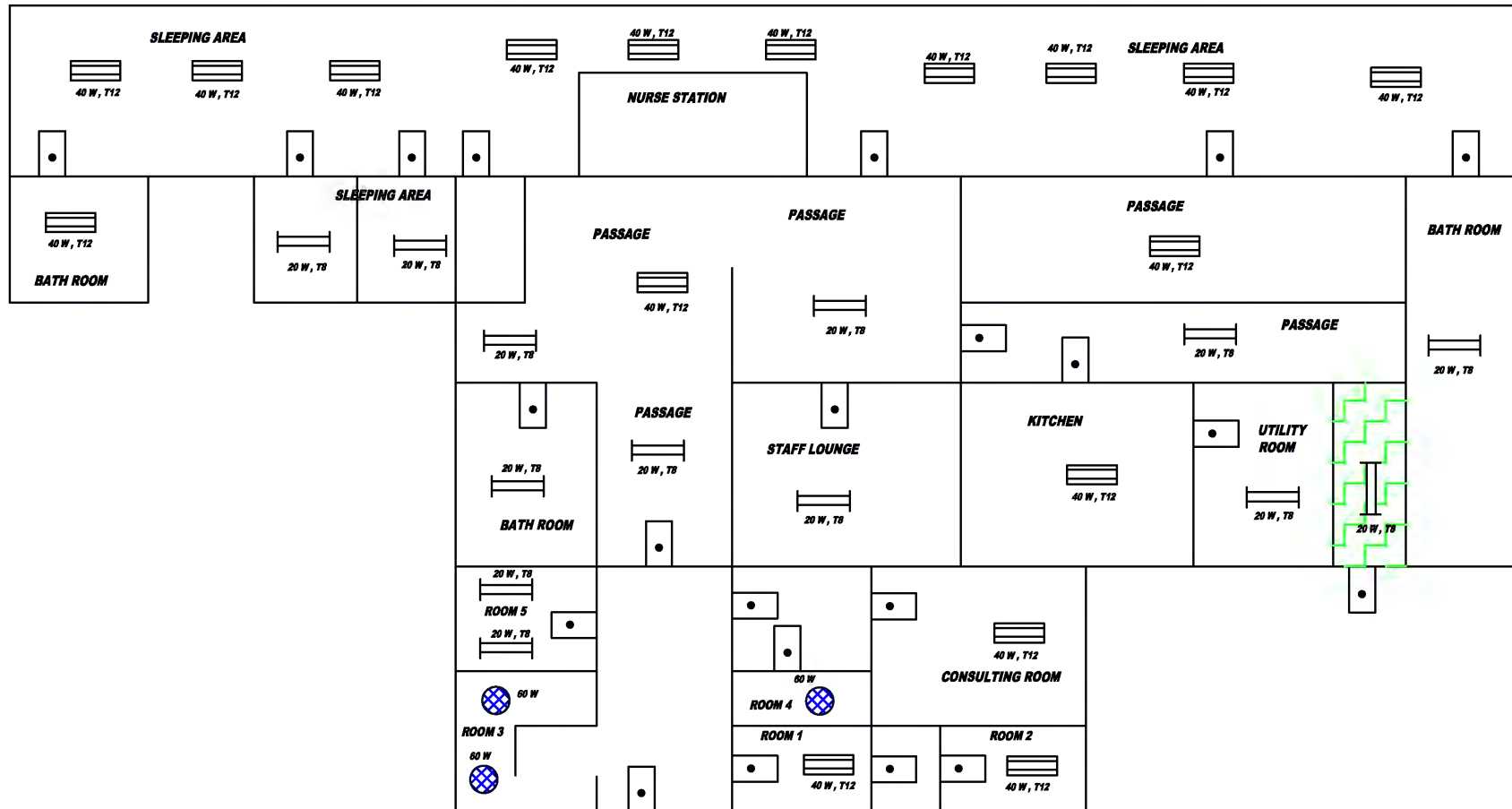
INVESTMENT GRADE ENERGY AUDIT FOR SIX HOSPITALS (Project ID: 00067974 (UNDP))	SOUTH EAST REGIONAL HEALTH AUTHORITY
ENTITY: PETROLEUM CORPORATION OF JAMAICA	BELLEVUE HOSPITAL
ADDRESS: 36 TRAFALGAR ROAD KINGSTON 10, JAMAICA	WINWARD ROAD, KINGSTON 2, Jamaica
CONTACT: 876-929-5380	DRAWING NOT DONE TO SCALE

KEY

	CORRIDOR
	DOOR
	2 FT DOUBLE FLUORESCENT
	4 FT SINGLE FLUORESCENT
	4 FT DOUBLE FLUORESCENT



PowerGen Limited
24 Derrymore Road, Kingston 10
Kingston, Jamaica, West Indies
Telephone: 876 754 2323
Fax: 876 906 4963
Email: info@powergen-jm.com
<http://www.powergen-jm.com>



PowerGen Ltd.
Power Generation & Services Limited

PowerGen Limited
 24 Derrymore Road, Kingston 10
 Kingston, Jamaica, West Indies
 Telephone: 876 754 2323
 Fax: 876 906 4963
 Email: info@powergen-jm.com
<http://www.powergen-jm.com>

LIGHTING LAYOUT - METER # 1350261

RAINBOW CENTRE

INVESTMENT GRADE ENERGY AUDIT FOR SIX
 HOSPITALS

[Project ID#: 00087974 (UNDP)]

ENTITY: PETROLEUM CORPORATION OF
 JAMAICA

ADDRESS: 36 TRAFALGAR ROAD
 KINGSTON 10, JAMAICA

CONTACT: 876-929-5380

**SOUTH EAST REGIONAL HEALTH
 AUTHORITY**

BELLEVUE HOSPITAL

**WINWARD ROAD,
 KINGSTON 2,
 Jamaica**

**DRAWING NOT DONE TO
 SCALE**