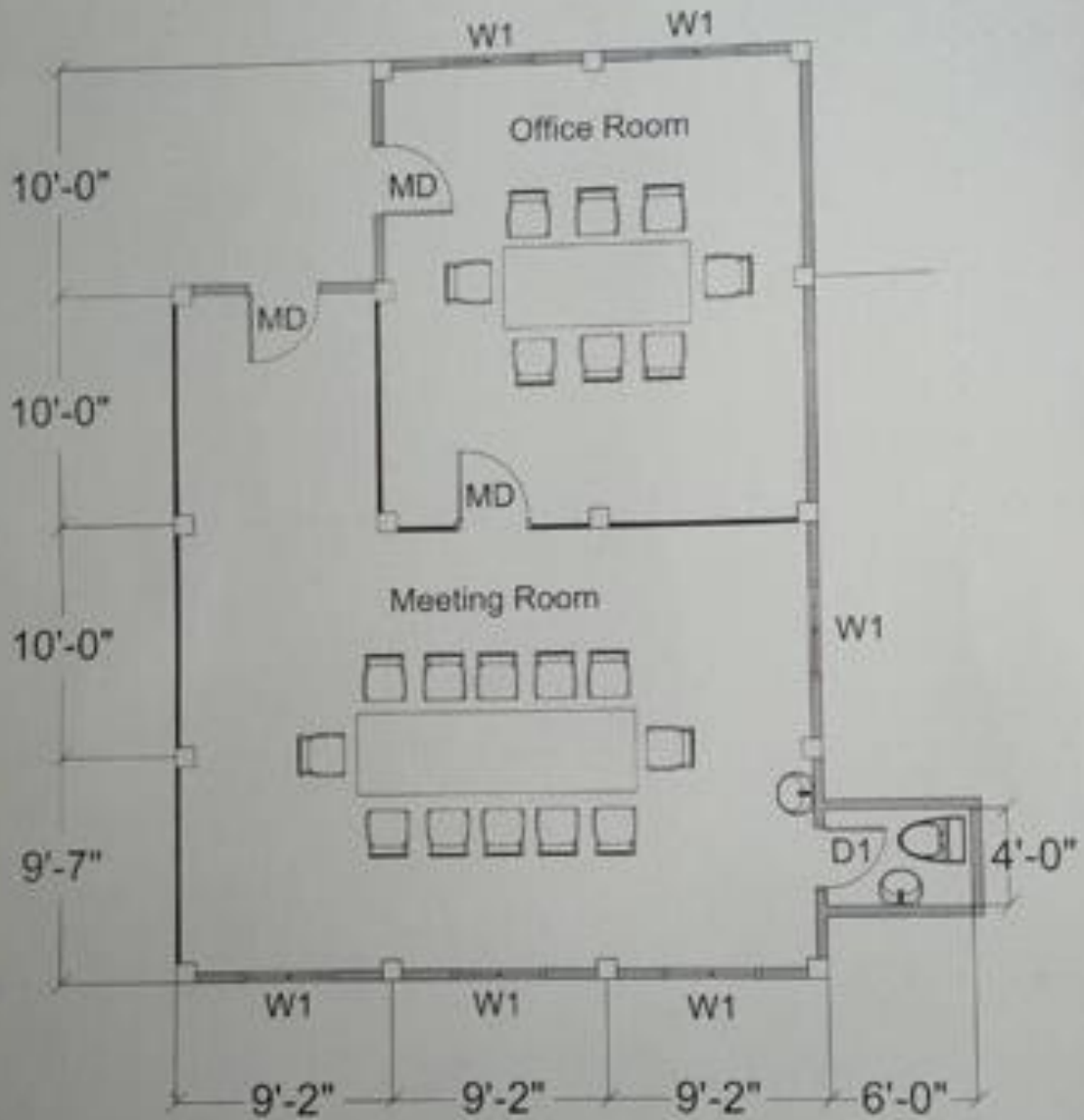


ANNEX I – FLOOR PLAN AND OFFICE DETAILS



D1 = 6'-6" x 2'-6"
W1 = 4'-0" x 4'-0"
MD = 7'-0" x 3'-0"

FLOOR PLAN

#	Description	Information
1	Address of the office	No 27, Hlaing River Road, Insein Township, Yangon
2	PO Box (postal office box) address to receive mails and DHLs	PO Box Number is 11011
3	Number of rooms (to see if partitions are required)	2 rooms
4	Size, floor plan and all dimensions	34 sqm for office, 64 sqm for conference room
6	Existing toilets and bathroom/kitchen facilities	Toilet is shared with staff housing. Existing facility is not good enough. Septic tank is already in place. Need to build a new toilet next to the building.
7	Access to parking space	Adequate parking space
8	Access to electricity with several plugs	Electricity is in place but new cable and wiring will be required for Arise Plus office and meeting facility. Plugs need to be installed.
10	Air conditioning	Absent.
11	Access to water	Water pipe line needs to be installed both office and meeting room
12	Number and quality of doors and windows	Doors and windows are in good condition. 4 entrances and 12 windows for the entire building. The total area of the whole building is 40ft x 60ft.
11	Access to water	Water pipe line needs to be installed both office and meeting room
12	Number and quality of doors and windows	Doors and windows are in good condition. 4 entrances and 12 windows for the entire building. Need fire extinguishers in rooms. Need bars and Shatter Resistant Film on windows. Need to create emergency exit.