

Typical Drawings for Renovation

Drawn by: Soran Rostam Aziz

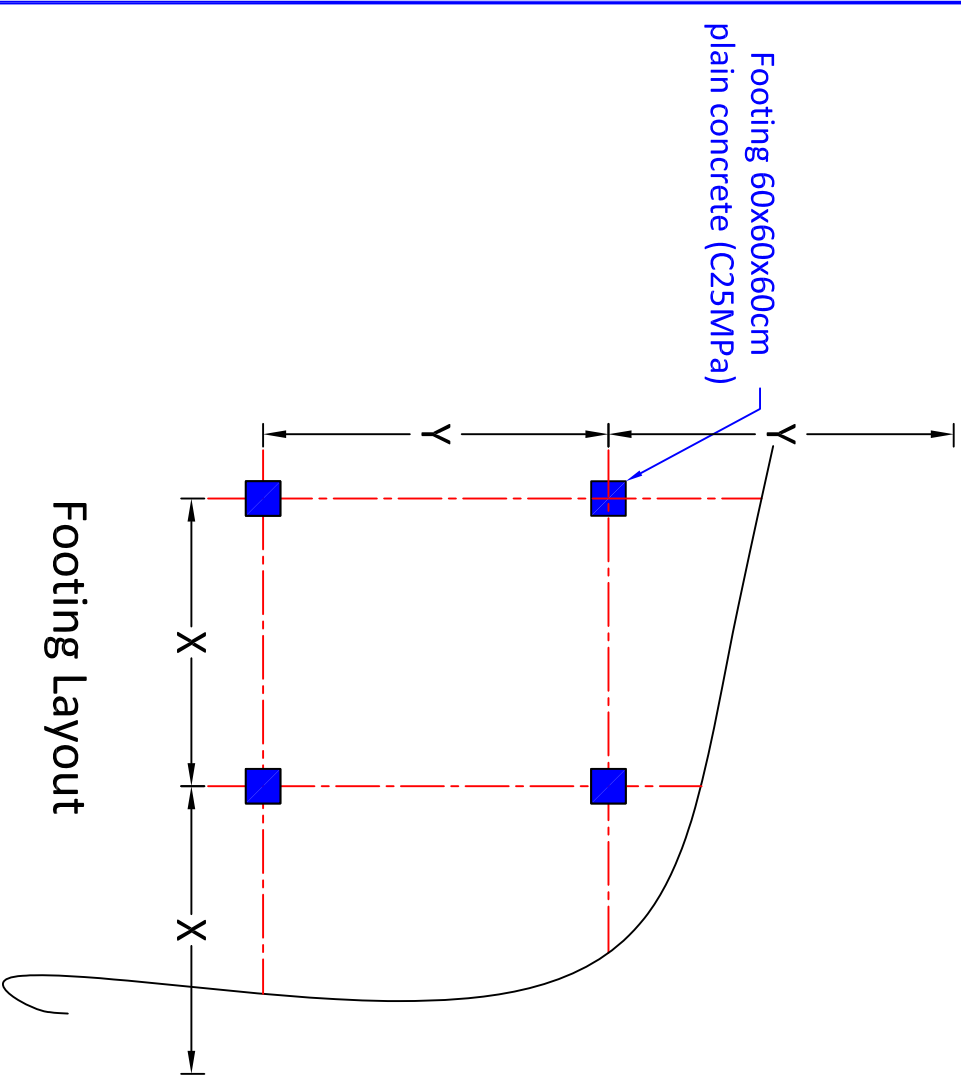
Sheet Title:

Detail of Curbstone

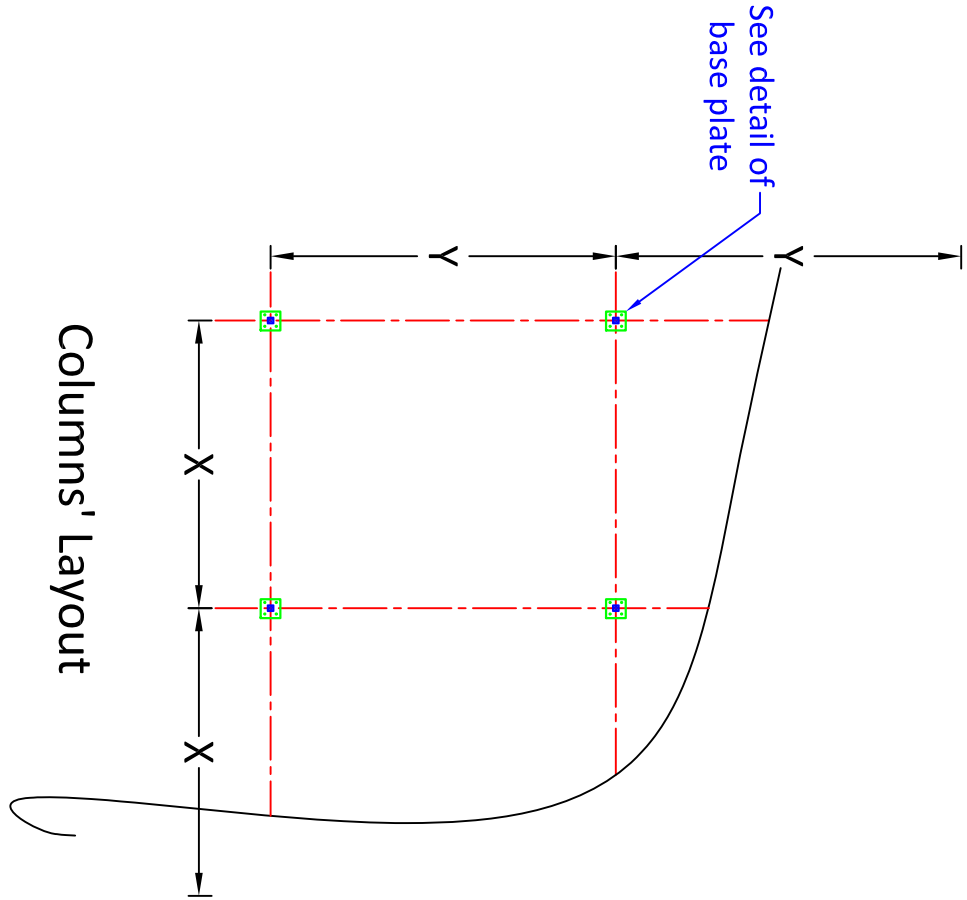
Scale: NTS

Date:

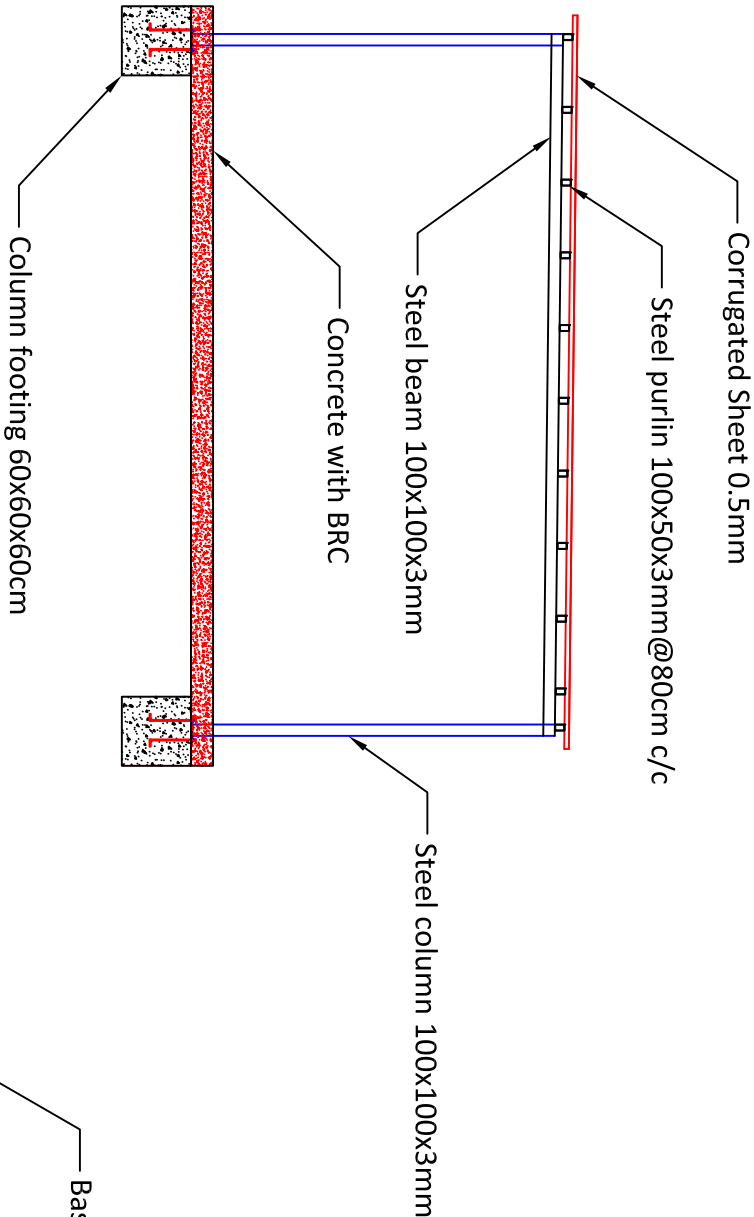
DWG No.



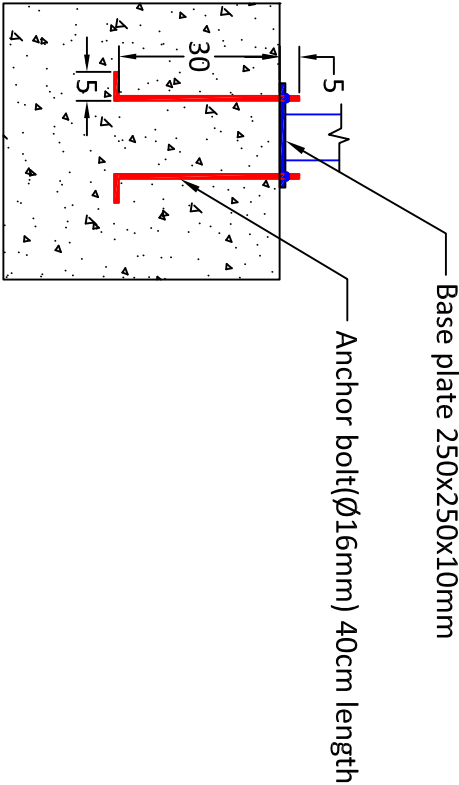
Footing Layout



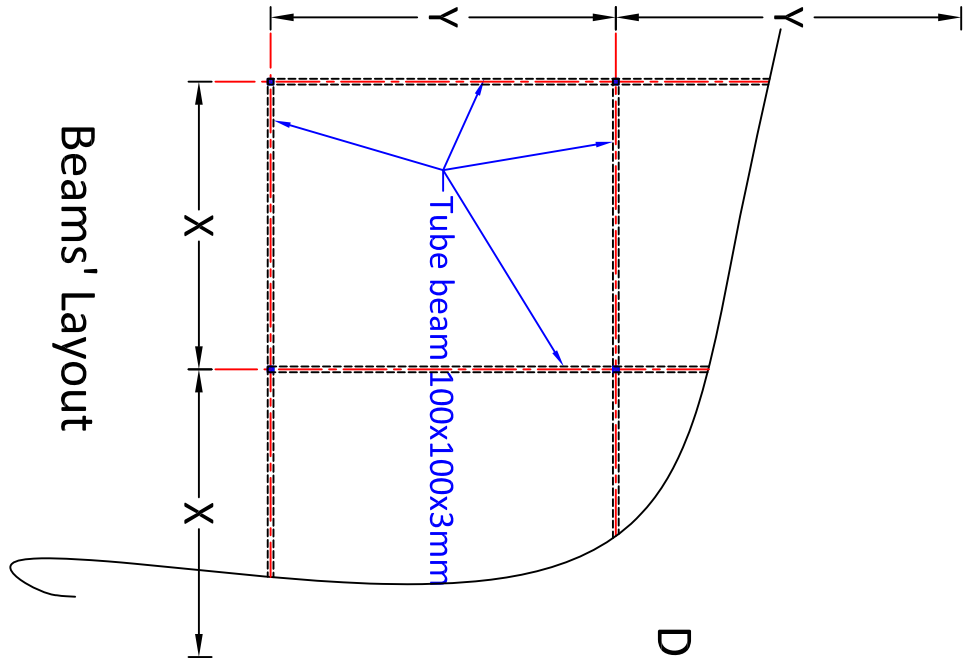
Columns' Layout



Section of the sun shed

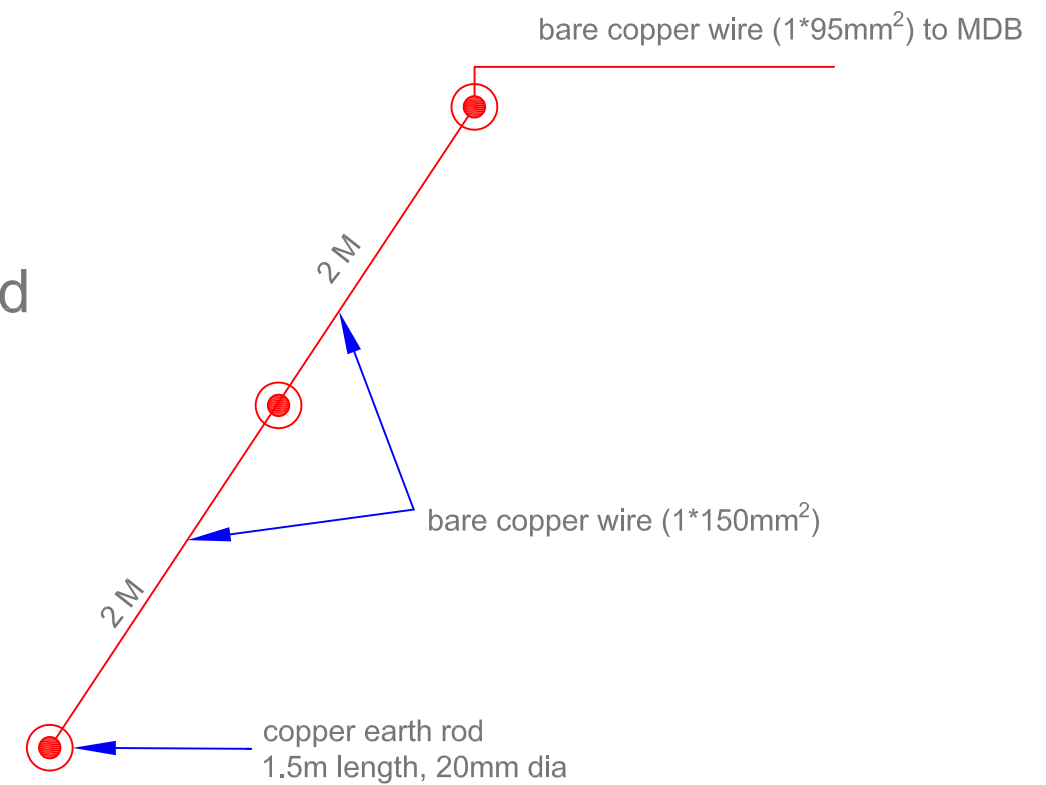
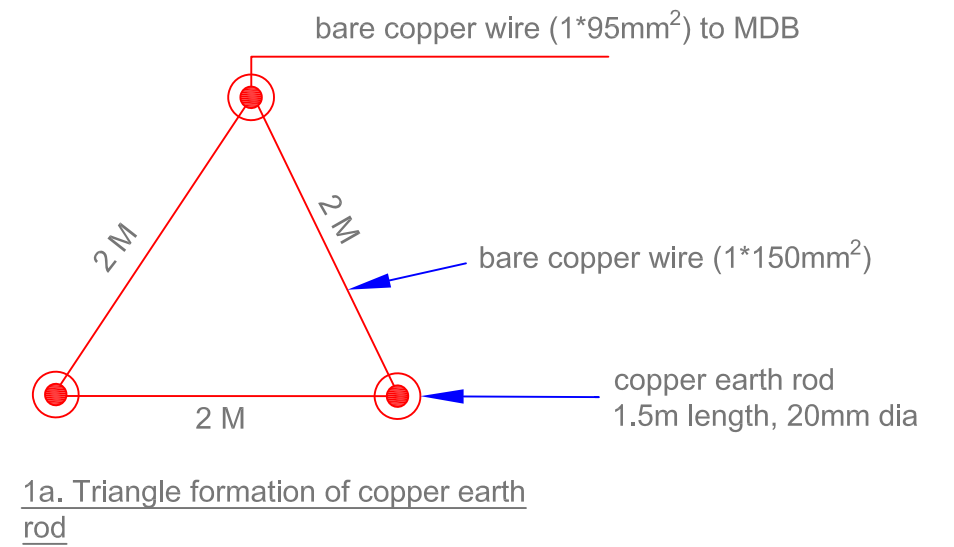
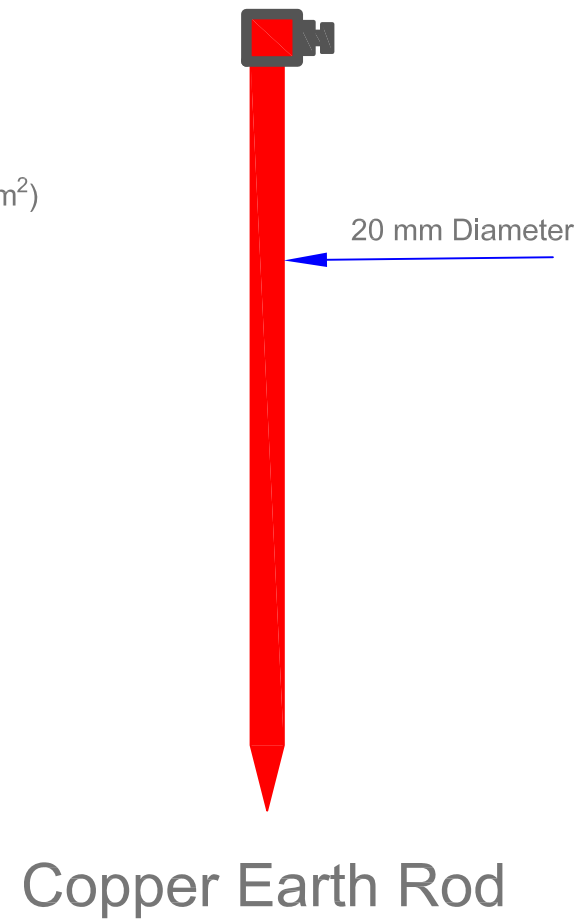
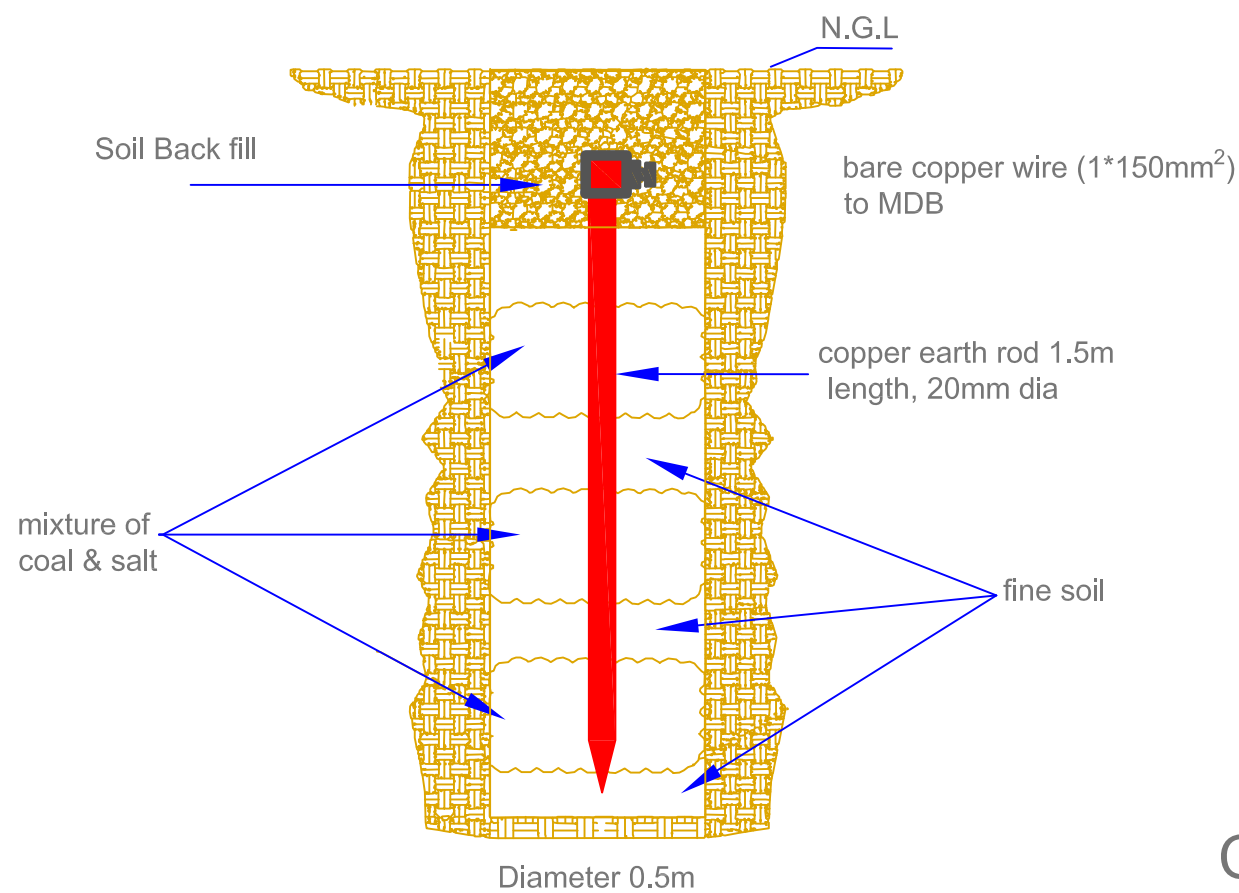


Detail of column footing and base plate



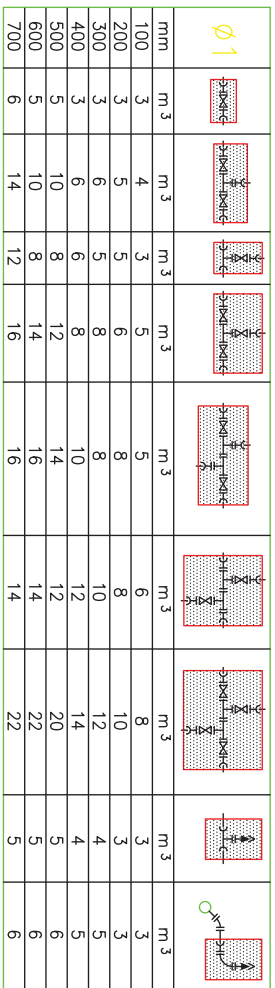
Beams' Layout

Typical Drawings for Renovation		
Drawn by: Soran Rostam Aziz		
Sheet Title: Detail of Sun Shed spanning in two directions		
Scale: NTS	Date:	DWG No.



		U	N
Designed by:		D	P
Earthing System			
Scale: NTS	Date:		Sheet No.:

Annex M-5



REFERENCE DRAWINGS:	
DRAWING TITLE	DRAWING NO.

PROJECT:

DWG-TITLE:
Standard Drawings
- Valve Chambers -

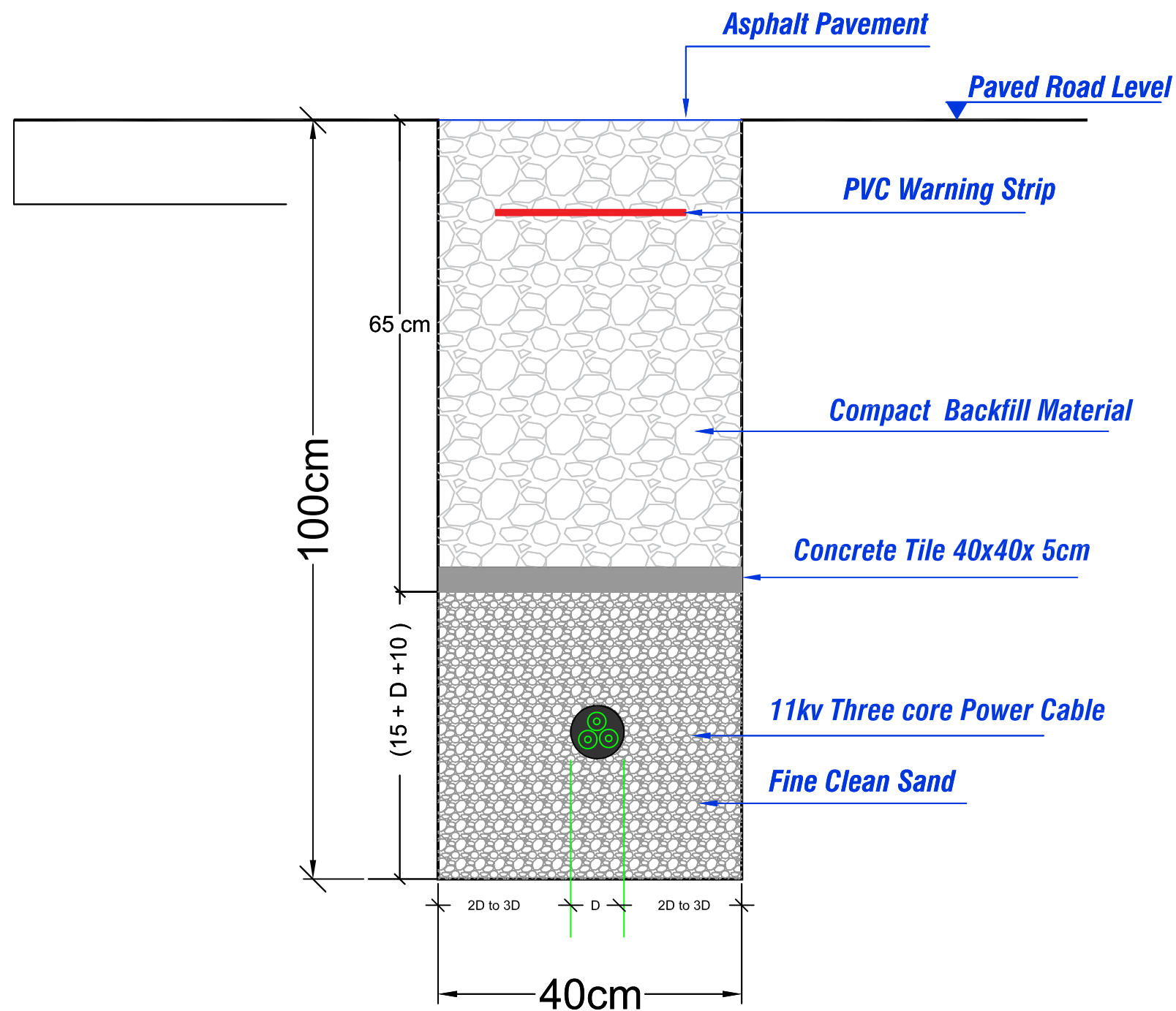
Rev. No.	Date	Nature of Revision	Prepared	Checked	Approved
SCALE	10/11/2014				
REMARKS					
CHECKED					
APPROVED					

Annex M-1

® Process Gauge - Stainless Steel

- Liquid-filled Case





DRAWING (C)
CABLE TRENCH (11KV)

Trench width $W = 5D$ to $7D$
 $D = 6.4\text{cm} = 640\text{mm}$ (approximately)
 $W = (5 \text{ to } 7) \times 64\text{mm} \approx 320\text{mm}$ to 448mm
 The Trench should be not less than 400mm

UNDER GROUND CABLE :
 Underground cable 11kv

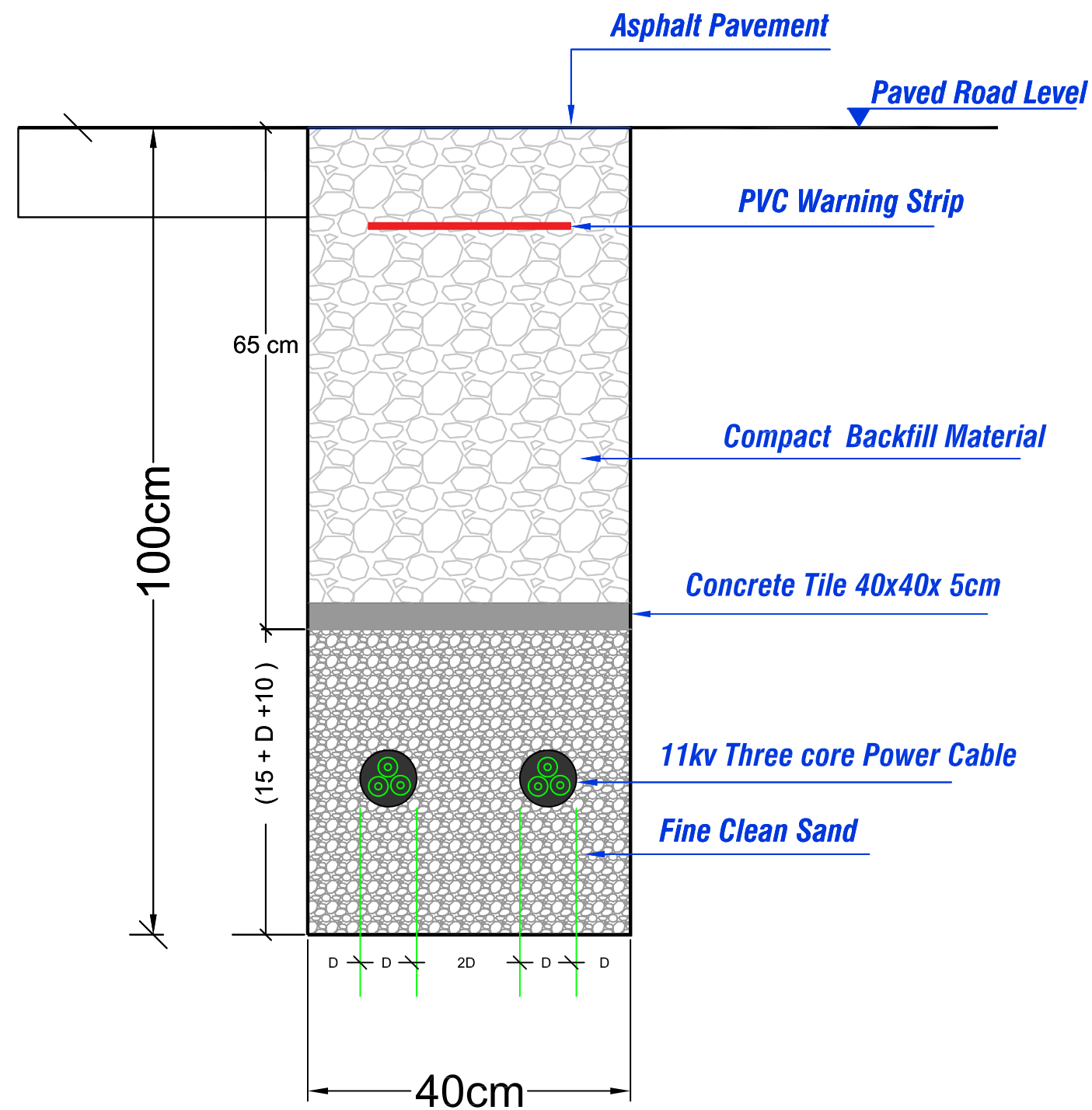
DRAWN BY : Ayoub Hussein

SHEET TITLE : Power Cable Trench

Scale: NTS

Date:

Sheet No. 1



DRAWING (C)
CABLE TRENCH (11KV)

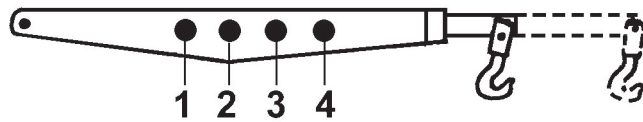
Trench width $W = 6D$
 $D = 6.4\text{cm} = 640\text{mm}$ (approximately)
 $W = 9 \times 64\text{mm} = 384\text{mm}$
 The Trench should be not less than 400mm(40cm)

UNDER GROUND CABLE : 2 Underground Feeder 11kv		
DRAWN BY : Ayoub Hussein		
SHEET TITLE : Power Cable Trench		
Scale: NTS	Date:	Sheet No. 2

Annex M-2



SPECIFICATION



Annex M-3

FOOT VALVE

Available Pressures

Available Pressures

PN 10



Paint:

DN50-800 -- Electrostatic Fusion Bonded Powder Epoxy Blue

Annex M-4

